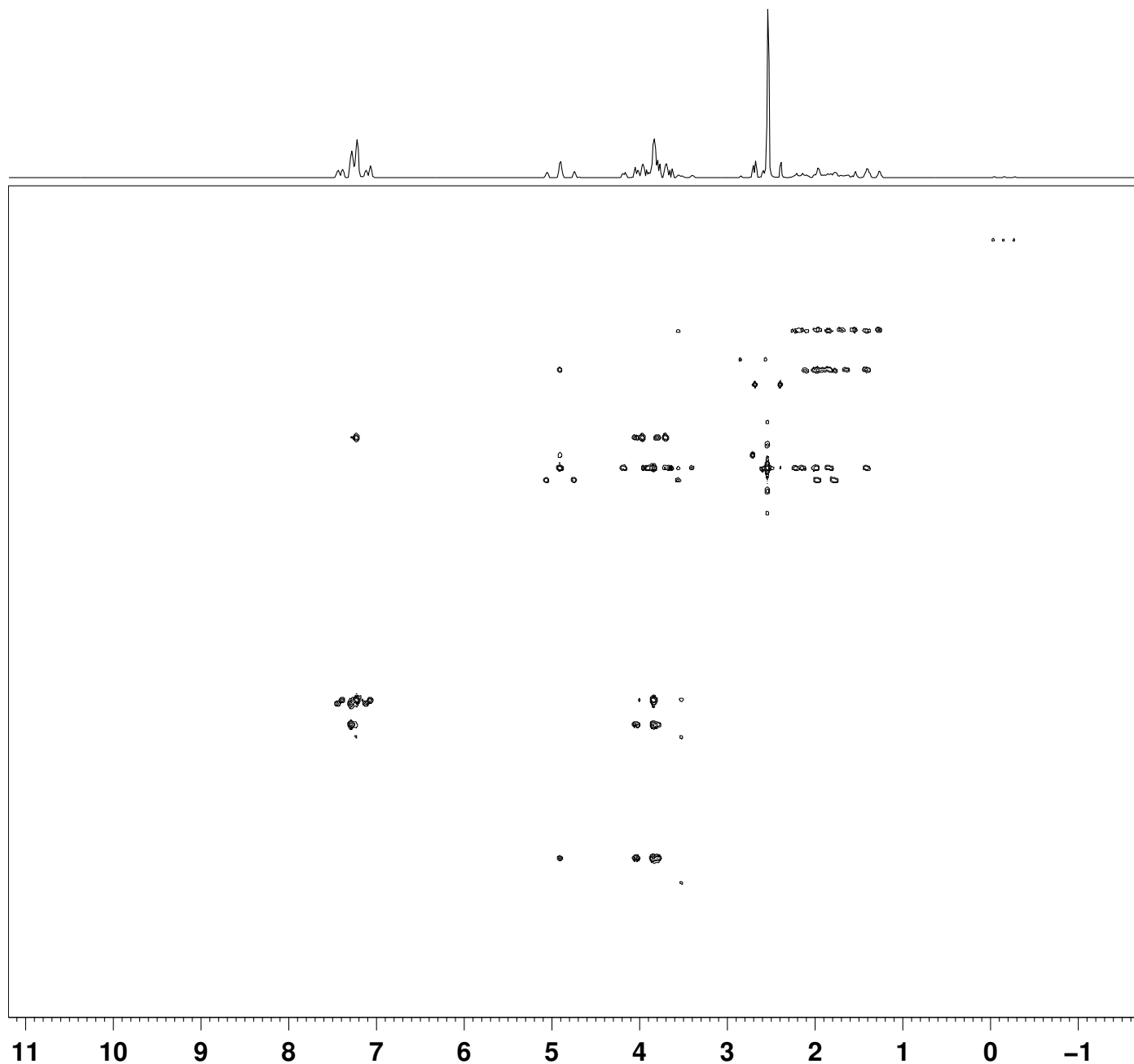
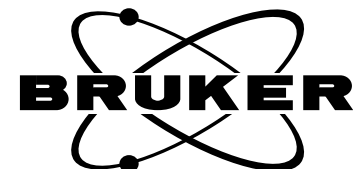


CQ-00971-D2O-HMBC-271009-298 K-500 MHz
HMBC-mmcd-clem D2O /opt/topspin ravi {1 C12 - 136}



NAME CQ-00971-D2O-271009
EXPNO 7
PROCNO 1
Date_ 20091031
Time 16.59
INSTRUM spect
PROBHD 5 mm CPTXO 13C
PULPROG hmbcgpndqf
TD 4096
SOLVENT D2O
NS 8
DS 32
SWH 6493.506 Hz
FIDRES 1.585329 Hz
AQ 0.3154420 sec
RG 28.5
DW 77.000 usec
DE 30.00 usec
TE 298.0 K
CNST13 8.0000000
D0 0.00000300 sec
D1 1.50000000 sec
D6 0.06250000 sec
D16 0.00020000 sec
IN0 0.00001685 sec

===== CHANNEL f1 =====
NUC1 1H
P1 15.70 usec
P2 31.40 usec
PL1 0.90 dB
PL1W 21.64242172 W
SFO1 499.8423492 MHz

===== CHANNEL f2 =====
NUC2 13C
P3 10.00 usec
PL2 3.00 dB
PL2W 36.25705338 W
SFO2 125.6974365 MHz

===== GRADIENT CHANNEL =====
GPNAM1 SINE.100
GPNAM2 SINE.100
GPNAM3 SINE.100
GPZ1 50.00 %
GPZ2 30.00 %
GPZ3 40.10 %
P16 1000.00 usec
ND0 2
TD 256
SFO1 125.6974 MHz
FIDRES 115.877327 Hz
SW 236.000 ppm
FnMODE QF
SI 1024
SF 499.8400000 MHz
WDW SINE
SSB 0
LB 0.00 Hz
GB 0
PC 1.40
SI 1024
MC2 QF
SF 125.6848680 MHz
WDW SINE
SSB 0
LB 0.00 Hz
GB 0