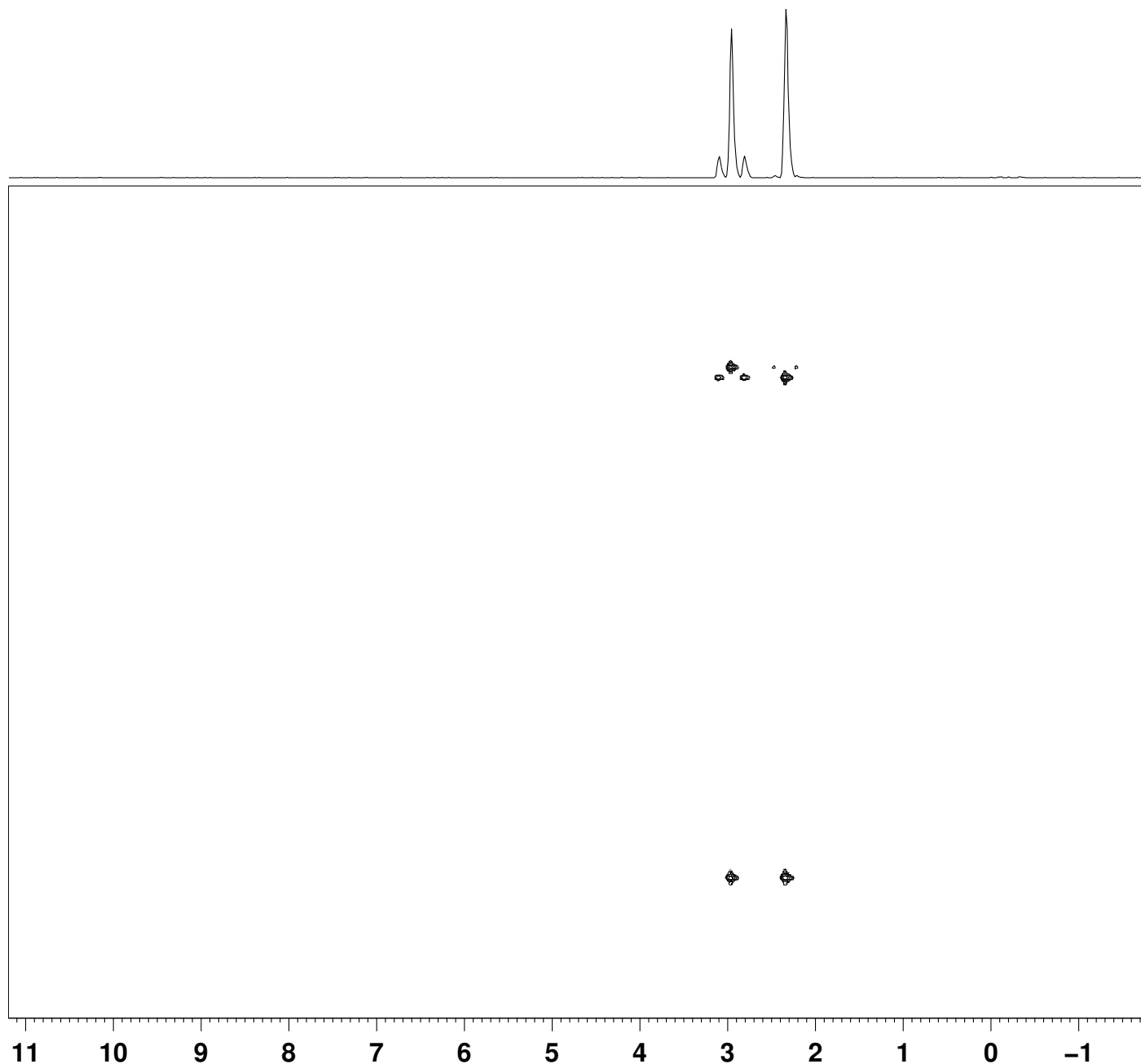
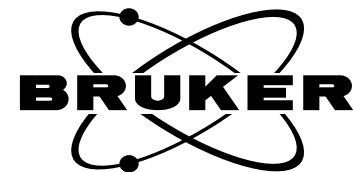


HMBC-mmcd-clem D2O /opt/topspin216 mfjofre {3 D7 - 343}



NAME cq_00066-100mm-d2o-10-29-10
EXPNO 7
PROCNO 1
Date_ 20101031
Time 6.31
INSTRUM spect
PROBHD 5 mm CPTXO 13C
PULPROG hmbcgpndqf
TD 2048
SOLVENT D2O
NS 16
DS 32
SWH 6493.506 Hz
FIDRES 3.170657 Hz
AQ 0.1577460 sec
RG 28.5
DW 77.000 usec
DE 30.00 usec
TE 298.0 K
CNST13 8.0000000
D0 0.00000300 sec
D1 1.50000000 sec
D6 0.06250000 sec
D16 0.00020000 sec
IN0 0.00001685 sec

===== CHANNEL f1 =====
NUC1 1H
P1 15.00 usec
P2 30.00 usec
PL1 0.75 dB
PL1W 22.40298462 W
SFO1 499.8423492 MHz

===== CHANNEL f2 =====
NUC2 13C
P3 10.00 usec
PL2 3.00 dB
PL2W 36.25705338 W
SFO2 125.6974365 MHz

===== GRADIENT CHANNEL =====
GPNAM1 SINE.100
GPNAM2 SINE.100
GPNAM3 SINE.100
GPZ1 50.00 %
GPZ2 30.00 %
GPZ3 40.10 %
P16 1000.00 usec
ND0 2
TD 256
SFO1 125.6974 MHz
FIDRES 115.877327 Hz
SW 236.000 ppm
FnMODE QF
SI 1024
SF 499.8400000 MHz
WDW SINE
SSB 0
LB 0.00 Hz
GB 0
PC 1.40
SI 1024
MC2 QF
SF 125.6848680 MHz
WDW SINE
SSB 0
LB 0.00 Hz
GB 0