



## Full wwPDB EM Validation Report ⓘ

Mar 6, 2026 – 11:56 AM UTC

PDB ID : 9ZJS / pdb\_00009zjs  
EMDB ID : EMD-74340  
Title : Human sterile alpha motif domain-containing protein 9 (SAMD9), asymmetric dimer "shell" shape  
Authors : Mou, Z.; Zhang, F.; Dai, X.; Xiang, Y.  
Deposited on : 2025-12-05  
Resolution : 3.04 Å(reported)

This is a Full wwPDB EM Validation Report for a publicly released PDB entry.

We welcome your comments at [validation@mail.wwpdb.org](mailto:validation@mail.wwpdb.org)

A user guide is available at

<https://www.wwpdb.org/validation/2017/EMValidationReportHelp>  
with specific help available everywhere you see the ⓘ symbol.

The types of validation reports are described at

<http://www.wwpdb.org/validation/2017/FAQs#types>.

---

The following versions of software and data (see [references ⓘ](#)) were used in the production of this report:

EMDB validation analysis : 0.0.1.dev132  
Mogul : 2022.3.0, CSD as543be (2022)  
MolProbity : 4-5-2 with Phenix2.0  
Buster-report : wwPDB partial adaption of 1.1.7 (2018)  
Percentile statistics : 20250101.v01 (using entries in the PDB archive January 1st 2025)  
EM percentile statistics : 202505.v01 (Using data in the EMDB archive up until May 2025)  
MapQ : 1.9.13  
Ideal geometry (proteins) : Engh & Huber (2001)  
Ideal geometry (DNA, RNA) : Parkinson et al. (1996)  
Validation Pipeline (wwPDB-VP) : 2.49

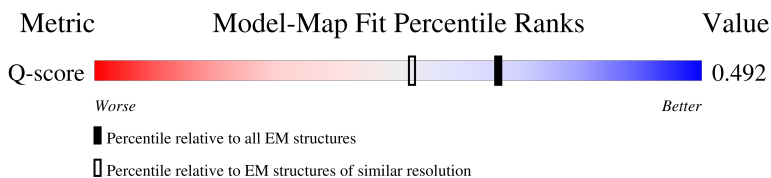
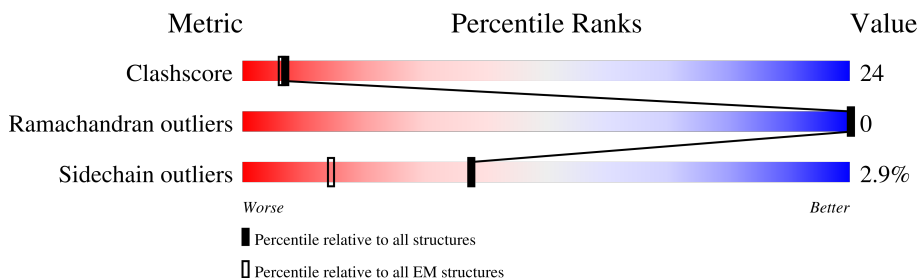
# 1 Overall quality at a glance

The following experimental techniques were used to determine the structure:

*ELECTRON MICROSCOPY*


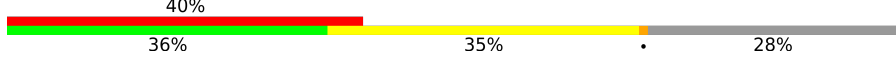
The reported resolution of this entry is 3.04 Å.

Percentile scores (ranging between 0-100) for global validation metrics of the entry are shown in the following graphic. The table shows the number of entries on which the scores are based.



Metric	Whole archive (#Entries)	EM structures (#Entries)	Similar EM resolution (#Entries, resolution range(Å))
Clashscore	229148	23984	-
Ramachandran outliers	224038	23583	-
Sidechain outliers	223484	23102	-
Q-score	-	25397	13952 ( 2.54 - 3.54 )

The table below summarises the geometric issues observed across the polymeric chains and their fit to the map. The red, orange, yellow and green segments of the bar indicate the fraction of residues that contain outliers for  $\geq 3$ , 2, 1 and 0 types of geometric quality criteria respectively. A grey segment represents the fraction of residues that are not modelled. The numeric value for each fraction is indicated below the corresponding segment, with a dot representing fractions  $\leq 5\%$ . The upper red bar (where present) indicates the fraction of residues that have poor fit to the EM map (all-atom inclusion  $< 40\%$ ). The numeric value is given above the bar.

Mol	Chain	Length	Quality of chain
1	A	1450	
1	B	1450	

## 2 Entry composition

There are 3 unique types of molecules in this entry. The entry contains 17804 atoms, of which 8 are hydrogens and 0 are deuteriums.

In the tables below, the AltConf column contains the number of residues with at least one atom in alternate conformation and the Trace column contains the number of residues modelled with at most 2 atoms.

- Molecule 1 is a protein called Sterile alpha motif domain-containing protein 9.

Mol	Chain	Residues	Atoms					AltConf	Trace
1	A	1117	Total	C	N	O	S	0	0
			9139	5896	1515	1687	41		
1	B	1047	Total	C	N	O	S	0	0
			8593	5558	1407	1589	39		

There are 32 discrepancies between the modelled and reference sequences:

Chain	Residue	Modelled	Actual	Comment	Reference
A	140	MET	-	initiating methionine	UNP Q5K651
A	141	ASP	-	expression tag	UNP Q5K651
A	142	TYR	-	expression tag	UNP Q5K651
A	143	LYS	-	expression tag	UNP Q5K651
A	144	ASP	-	expression tag	UNP Q5K651
A	145	HIS	-	expression tag	UNP Q5K651
A	146	ASP	-	expression tag	UNP Q5K651
A	147	GLY	-	expression tag	UNP Q5K651
A	148	ASP	-	expression tag	UNP Q5K651
A	149	TYR	-	expression tag	UNP Q5K651
A	150	LYS	-	expression tag	UNP Q5K651
A	151	ASP	-	expression tag	UNP Q5K651
A	152	HIS	-	expression tag	UNP Q5K651
A	153	ASP	-	expression tag	UNP Q5K651
A	154	ILE	-	expression tag	UNP Q5K651
A	155	ASP	-	expression tag	UNP Q5K651
B	140	MET	-	initiating methionine	UNP Q5K651
B	141	ASP	-	expression tag	UNP Q5K651
B	142	TYR	-	expression tag	UNP Q5K651
B	143	LYS	-	expression tag	UNP Q5K651
B	144	ASP	-	expression tag	UNP Q5K651
B	145	HIS	-	expression tag	UNP Q5K651
B	146	ASP	-	expression tag	UNP Q5K651
B	147	GLY	-	expression tag	UNP Q5K651
B	148	ASP	-	expression tag	UNP Q5K651
B	149	TYR	-	expression tag	UNP Q5K651

*Continued on next page...*

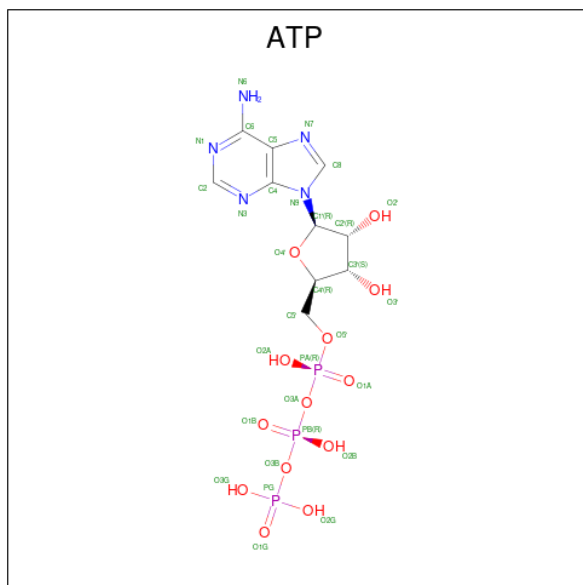
Continued from previous page...

Chain	Residue	Modelled	Actual	Comment	Reference
B	150	LYS	-	expression tag	UNP Q5K651
B	151	ASP	-	expression tag	UNP Q5K651
B	152	HIS	-	expression tag	UNP Q5K651
B	153	ASP	-	expression tag	UNP Q5K651
B	154	ILE	-	expression tag	UNP Q5K651
B	155	ASP	-	expression tag	UNP Q5K651

- Molecule 2 is MAGNESIUM ION (CCD ID: MG) (formula: Mg) (labeled as "Ligand of Interest" by depositor).

Mol	Chain	Residues	Atoms	AltConf
2	A	1	Total Mg 1 1	0
2	B	1	Total Mg 1 1	0

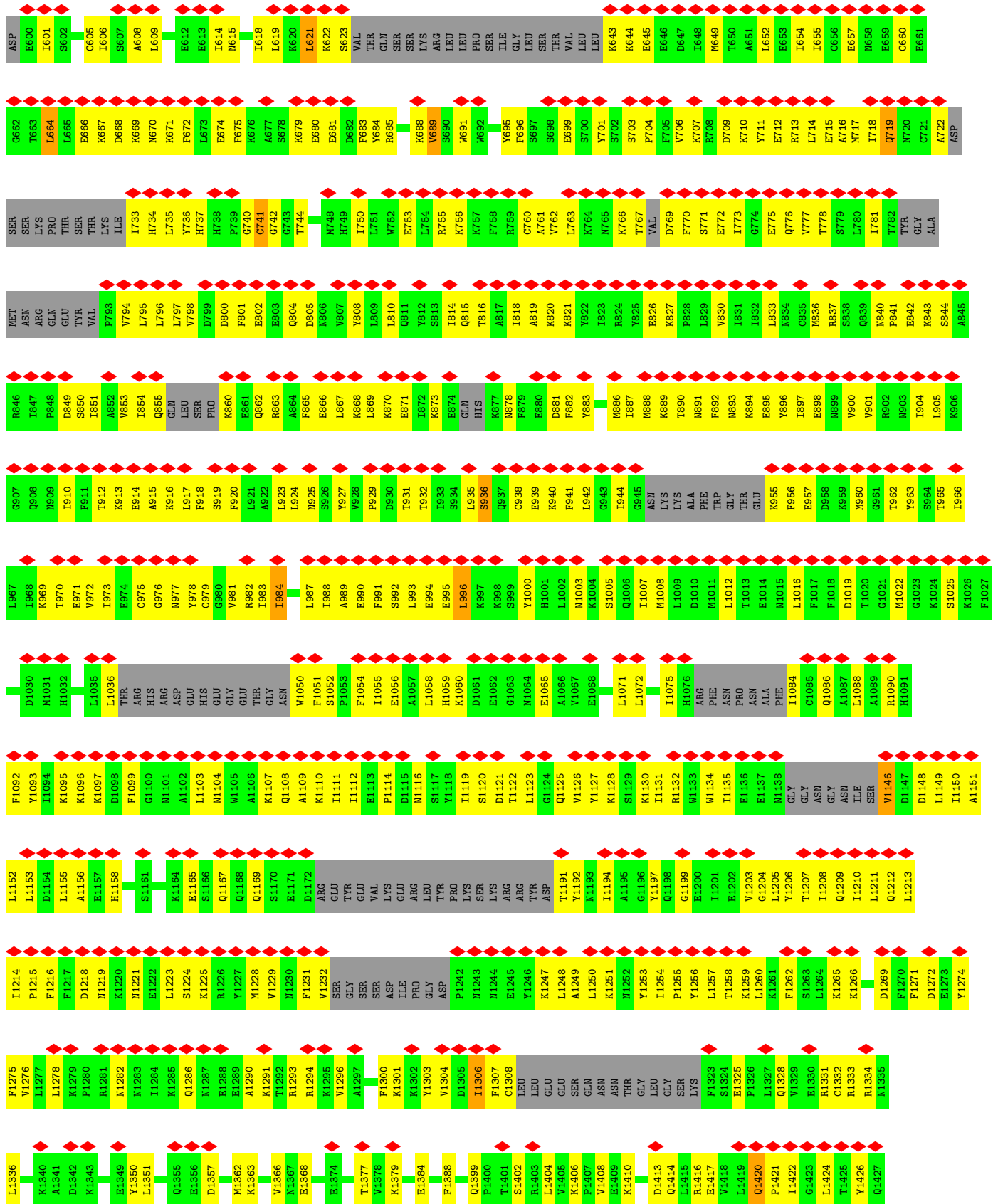
- Molecule 3 is ADENOSINE-5'-TRIPHOSPHATE (CCD ID: ATP) (formula: C<sub>10</sub>H<sub>16</sub>N<sub>5</sub>O<sub>13</sub>P<sub>3</sub>) (labeled as "Ligand of Interest" by depositor).

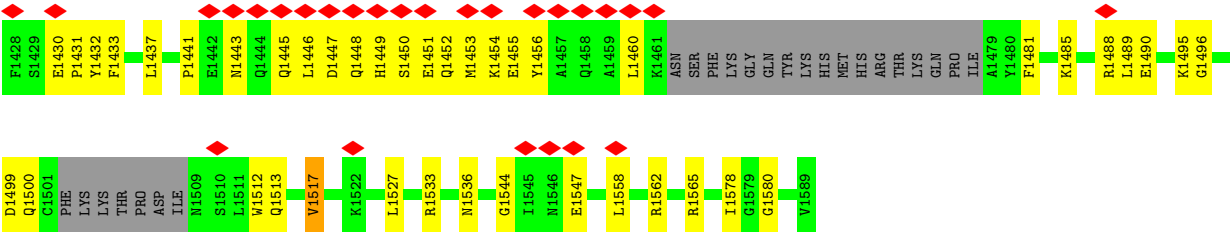


Mol	Chain	Residues	Atoms	AltConf
3	A	1	Total C H N O P 35 10 4 5 13 3	0
3	B	1	Total C H N O P 35 10 4 5 13 3	0











## 4 Experimental information

Property	Value	Source
EM reconstruction method	SINGLE PARTICLE	Depositor
Imposed symmetry	POINT, Not provided	
Number of particles used	53434	Depositor
Resolution determination method	FSC 0.143 CUT-OFF	Depositor
CTF correction method	PHASE FLIPPING AND AMPLITUDE CORRECTION	Depositor
Microscope	TFS KRIOS	Depositor
Voltage (kV)	300	Depositor
Electron dose ( $e^-/\text{\AA}^2$ )	50	Depositor
Minimum defocus (nm)	1000	Depositor
Maximum defocus (nm)	1800	Depositor
Magnification	130000	Depositor
Image detector	GATAN K3 (6k x 4k)	Depositor
Maximum map value	1.319	Depositor
Minimum map value	-0.661	Depositor
Average map value	0.000	Depositor
Map value standard deviation	0.032	Depositor
Recommended contour level	0.25	Depositor
Map size (Å)	337.92, 337.92, 337.92	wwPDB
Map dimensions	512, 512, 512	wwPDB
Map angles (°)	90.0, 90.0, 90.0	wwPDB
Pixel spacing (Å)	0.66, 0.66, 0.66	Depositor

## 5 Model quality

### 5.1 Standard geometry

Bond lengths and bond angles in the following residue types are not validated in this section: ATP, MG

The Z score for a bond length (or angle) is the number of standard deviations the observed value is removed from the expected value. A bond length (or angle) with  $|Z| > 5$  is considered an outlier worth inspection. RMSZ is the root-mean-square of all Z scores of the bond lengths (or angles).

Mol	Chain	Bond lengths		Bond angles	
		RMSZ	$\# Z  > 5$	RMSZ	$\# Z  > 5$
1	A	0.33	0/9332	0.45	0/12573
1	B	0.29	0/8765	0.42	0/11792
All	All	0.31	0/18097	0.43	0/24365

There are no bond length outliers.

There are no bond angle outliers.

There are no chirality outliers.

There are no planarity outliers.

### 5.2 Too-close contacts

In the following table, the Non-H and H(model) columns list the number of non-hydrogen atoms and hydrogen atoms in the chain respectively. The H(added) column lists the number of hydrogen atoms added and optimized by MolProbity. The Clashes column lists the number of clashes within the asymmetric unit, whereas Symm-Clashes lists symmetry-related clashes.

Mol	Chain	Non-H	H(model)	H(added)	Clashes	Symm-Clashes
1	A	9139	0	9178	317	0
1	B	8593	0	8622	537	0
2	A	1	0	0	0	0
2	B	1	0	0	0	0
3	A	31	4	12	2	0
3	B	31	4	12	4	0
All	All	17796	8	17824	853	0

The all-atom clashscore is defined as the number of clashes found per 1000 atoms (including hydrogen atoms). The all-atom clashscore for this structure is 24.

All (853) close contacts within the same asymmetric unit are listed below, sorted by their clash

magnitude.

Atom-1	Atom-2	Interatomic distance (Å)	Clash overlap (Å)
1:A:1406:LYS:HB3	1:A:1410:LYS:HD3	1.31	1.07
1:B:412:GLN:HB2	1:B:534:MET:HE1	1.36	1.06
1:B:955:LYS:HE3	1:B:956:PHE:H	1.20	1.06
1:B:415:LEU:HB3	1:B:439:VAL:HG22	1.28	1.06
1:B:480:ILE:HG23	1:B:485:LEU:HB2	1.40	1.02
1:B:905:LEU:HD12	1:B:995:GLU:HB3	1.38	1.00
1:B:1108:GLN:HA	1:B:1111:ILE:HD12	1.40	0.99
1:A:594:LEU:HD12	1:A:595:ILE:HG13	1.46	0.95
1:B:446:SER:HA	1:B:450:GLY:HA3	1.46	0.94
1:A:1434:LEU:HA	1:A:1437:LEU:HD12	1.48	0.93
1:B:901:VAL:HG21	1:B:991:PHE:HB2	1.50	0.93
1:B:394:LEU:HD22	1:B:614:ILE:HD12	1.52	0.91
1:B:664:LEU:HD23	1:B:667:LYS:HB2	1.51	0.90
1:A:1440:TRP:HA	1:A:1453:MET:HE2	1.49	0.90
1:A:726:LYS:HE2	1:A:727:PRO:HD2	1.53	0.90
1:A:739:PRO:HB3	1:A:837:ARG:HH21	1.38	0.88
1:B:1460:LEU:HD23	1:B:1580:GLY:HA2	1.58	0.85
1:B:1135:ILE:HD11	1:B:1210:ILE:HD11	1.56	0.85
1:A:923:LEU:HD23	1:A:1011:MET:HE1	1.58	0.85
1:A:1291:LYS:HE2	1:A:1295:LYS:HE3	1.58	0.85
1:B:535:PRO:HG2	1:B:538:LYS:HB2	1.59	0.85
1:B:826:GLU:N	1:B:826:GLU:OE2	2.09	0.85
1:A:1394:ILE:O	1:A:1398:ILE:HG13	1.77	0.84
1:B:1399:GLN:HG2	1:B:1402:SER:HB2	1.60	0.84
1:B:1214:ILE:HG23	1:B:1215:PRO:HD2	1.58	0.83
1:B:666:GLU:HA	1:B:672:PHE:CG	2.14	0.83
1:B:657:GLU:HG3	1:B:756:LYS:HG2	1.61	0.83
1:B:932:THR:HG22	1:B:982:ARG:HB3	1.59	0.83
1:A:1420:GLN:HB3	1:A:1421:PRO:HD3	1.61	0.83
1:A:1306:ILE:HG22	1:A:1307:PHE:CD1	2.15	0.82
1:B:716:ALA:HA	1:B:719:GLN:OE1	1.79	0.82
1:B:938:CYS:O	1:B:942:LEU:HG	1.79	0.82
1:A:1390:LEU:HG	1:A:1394:ILE:HD11	1.62	0.82
1:B:412:GLN:CB	1:B:534:MET:HE1	2.10	0.81
1:B:924:LEU:HD12	1:B:931:THR:HG21	1.62	0.81
1:B:893:ASN:HB3	1:B:895:GLU:OE2	1.81	0.81
1:A:503:GLU:OE1	1:A:503:GLU:N	2.10	0.80
1:B:816:THR:HG22	1:B:820:LYS:HE3	1.62	0.80
1:B:905:LEU:HD11	1:B:992:SER:HA	1.64	0.79
1:B:714:LEU:HD13	1:B:851:ILE:CD1	2.13	0.79
1:B:1410:LYS:O	1:B:1414:GLN:HG2	1.82	0.79

*Continued on next page...*

*Continued from previous page...*

Atom-1	Atom-2	Interatomic distance (Å)	Clash overlap (Å)
1:B:1413:ASP:O	1:B:1417:GLU:HG3	1.83	0.79
1:B:778:THR:HG22	1:B:821:LYS:HD2	1.65	0.78
1:B:1212:GLN:HG2	1:B:1228:MET:HE1	1.65	0.78
1:B:670:ASN:OD1	1:B:671:LYS:N	2.15	0.78
1:A:1356:GLU:O	1:A:1359:ILE:HG13	1.83	0.78
1:B:975:CYS:SG	1:B:1025:SER:OG	2.41	0.78
1:B:777:VAL:O	1:B:781:ILE:HG13	1.82	0.78
1:B:714:LEU:HD13	1:B:851:ILE:HD12	1.64	0.77
1:B:866:GLU:OE1	1:B:889:LYS:HE2	1.83	0.77
1:B:585:GLY:HA2	1:B:588:ASP:OD2	1.84	0.77
1:B:897:ILE:HG23	1:B:988:ILE:HD13	1.66	0.77
1:A:805:ASP:OD1	1:A:805:ASP:N	2.14	0.77
1:B:717:MET:HE1	1:B:849:ASP:HA	1.67	0.77
1:B:715:GLU:O	1:B:718:ILE:HG22	1.84	0.76
1:B:1109:ALA:HA	1:B:1112:ILE:HD12	1.66	0.76
1:B:1225:LYS:O	1:B:1228:MET:HG2	1.85	0.76
1:B:923:LEU:HA	1:B:993:LEU:HD11	1.67	0.76
1:B:718:ILE:HD11	1:B:795:LEU:HD11	1.68	0.75
1:B:955:LYS:HE3	1:B:956:PHE:N	2.00	0.75
1:B:1225:LYS:HA	1:B:1228:MET:SD	2.26	0.75
1:B:895:GLU:OE2	1:B:895:GLU:N	2.19	0.75
1:A:1172:ASP:O	1:A:1173:ARG:HG2	1.86	0.75
1:A:446:SER:OG	1:A:452:VAL:HG23	1.86	0.75
1:A:1344:PHE:CD1	1:A:1390:LEU:HD22	2.21	0.75
1:B:1093:TYR:CD2	1:B:1126:VAL:HG22	2.22	0.75
1:B:467:SER:HA	1:B:470:VAL:HG22	1.67	0.75
1:B:987:LEU:HD12	1:B:987:LEU:H	1.52	0.75
1:A:1430:GLU:HB2	1:A:1431:PRO:HD3	1.69	0.75
1:B:476:PRO:O	1:B:480:ILE:HG13	1.85	0.75
1:B:1207:THR:HG21	1:B:1256:TYR:HE2	1.51	0.74
1:B:1212:GLN:HG2	1:B:1228:MET:CE	2.17	0.74
1:B:862:GLN:O	1:B:866:GLU:HG2	1.87	0.74
1:B:990:GLU:O	1:B:994:GLU:HG3	1.88	0.74
1:A:1488:ARG:NH1	1:A:1488:ARG:HB2	2.03	0.74
1:B:769:ASP:HB3	1:B:772:GLU:HB2	1.70	0.73
1:B:1228:MET:O	1:B:1232:VAL:HG13	1.88	0.73
1:A:462:ASN:OD1	1:B:1562:ARG:NH2	2.20	0.73
1:A:1465:LYS:HA	1:A:1472:HIS:HE1	1.53	0.73
1:B:1103:LEU:HD12	1:B:1104:ASN:N	2.04	0.73
1:A:1216:PHE:HD2	1:A:1239:PRO:HG2	1.54	0.73
1:B:913:LYS:HA	1:B:916:LYS:HE3	1.71	0.73

*Continued on next page...*

*Continued from previous page...*

Atom-1	Atom-2	Interatomic distance (Å)	Clash overlap (Å)
1:A:1147:ASP:O	1:A:1150:ILE:HG22	1.89	0.72
1:B:1448:GLN:O	1:B:1452:GLN:NE2	2.22	0.72
1:A:1529:ARG:NE	1:A:1571:SER:HB2	2.04	0.72
1:B:1132:ARG:HG3	1:B:1206:TYR:OH	1.88	0.72
1:B:390:GLU:OE1	1:B:608:ALA:HB3	1.89	0.72
1:B:1304:VAL:HG21	1:B:1334:ARG:NH2	2.04	0.72
1:B:480:ILE:CG2	1:B:485:LEU:HB2	2.18	0.71
1:B:680:GLU:HG2	1:B:684:TYR:CE2	2.25	0.71
1:B:763:LEU:HD12	1:B:798:VAL:HG22	1.72	0.71
1:B:897:ILE:HB	1:B:991:PHE:HE2	1.56	0.71
1:A:1511:LEU:HD23	1:A:1517:VAL:HG22	1.72	0.70
1:A:726:LYS:CE	1:A:727:PRO:HD2	2.20	0.70
1:B:466:PRO:O	1:B:470:VAL:HG13	1.91	0.70
1:A:714:LEU:HD23	1:A:750:ILE:HG13	1.74	0.70
1:B:900:VAL:O	1:B:904:ILE:HG12	1.90	0.70
1:B:878:ASN:HB2	1:B:881:ASP:OD2	1.92	0.70
1:A:1433:PHE:CE2	1:A:1437:LEU:HD11	2.27	0.70
1:B:1148:ASP:O	1:B:1152:LEU:HG	1.90	0.70
1:A:1261:LYS:HG3	1:A:1307:PHE:CD2	2.27	0.69
1:A:1278:LEU:HD23	1:A:1477:PRO:HA	1.74	0.69
1:B:1130:LYS:HG2	1:B:1155:LEU:HD13	1.73	0.69
1:A:1272:ASP:OD2	1:A:1343:LYS:NZ	2.26	0.69
1:B:1050:TRP:HB3	1:B:1090:ARG:HH21	1.58	0.69
1:A:595:ILE:O	1:A:596:LYS:HB3	1.92	0.69
1:A:1355:GLN:O	1:A:1359:ILE:HG12	1.92	0.69
1:B:481:SER:HA	1:B:870:LYS:NZ	2.07	0.69
1:B:869:LEU:HD11	1:B:886:MET:HE1	1.74	0.69
1:B:1513:GLN:OE1	1:B:1513:GLN:N	2.16	0.69
1:A:587:LYS:HE2	1:A:598:GLN:HB3	1.74	0.69
1:B:1086:GLN:OE1	1:B:1119:ILE:HD12	1.93	0.69
1:B:1150:ILE:HD13	1:B:1253:TYR:HE2	1.58	0.69
1:B:763:LEU:HB3	1:B:766:LYS:HZ3	1.57	0.68
1:B:394:LEU:CD2	1:B:614:ILE:HD12	2.22	0.68
1:B:925:ASN:HD22	1:B:983:ILE:HG13	1.57	0.68
1:A:717:MET:HE3	1:A:849:ASP:HA	1.75	0.68
1:B:1135:ILE:HD11	1:B:1210:ILE:CD1	2.23	0.68
1:B:1151:ALA:O	1:B:1155:LEU:HG	1.93	0.68
1:A:1406:LYS:CB	1:A:1410:LYS:HD3	2.19	0.68
1:A:1526:LEU:HD12	1:A:1526:LEU:H	1.59	0.68
1:B:1131:ILE:HD11	1:B:1155:LEU:C	2.19	0.67
1:A:1557:PHE:HB2	1:A:1560:GLN:OE1	1.94	0.67

*Continued on next page...*

*Continued from previous page...*

Atom-1	Atom-2	Interatomic distance (Å)	Clash overlap (Å)
1:A:445:GLU:HG2	1:A:498:LEU:HD12	1.77	0.67
1:B:814:ILE:O	1:B:818:ILE:HG12	1.95	0.67
1:A:1529:ARG:HD2	1:A:1572:PHE:O	1.95	0.67
1:B:897:ILE:CG2	1:B:988:ILE:HD13	2.24	0.67
1:B:901:VAL:HG21	1:B:991:PHE:CB	2.24	0.67
1:B:1424:LEU:HA	1:B:1432:TYR:OH	1.93	0.67
1:B:897:ILE:HB	1:B:991:PHE:CE2	2.30	0.66
1:A:847:ILE:HG22	1:A:848:PRO:HD2	1.75	0.66
1:B:772:GLU:O	1:B:775:GLU:HG3	1.93	0.66
1:B:1216:PHE:CZ	1:B:1247:LYS:HE2	2.30	0.66
1:A:1396:SER:HB2	1:A:1405:VAL:HG21	1.77	0.66
1:A:1452:GLN:HA	1:A:1455:GLU:OE1	1.96	0.66
1:A:1404:LEU:O	1:A:1406:LYS:NZ	2.21	0.66
1:B:1134:TRP:CZ3	1:B:1152:LEU:HD11	2.31	0.65
1:B:606:ILE:HD12	1:B:606:ILE:H	1.61	0.65
1:B:962:THR:O	1:B:965:THR:HG22	1.95	0.65
1:B:428:LEU:HD21	1:B:451:VAL:HG22	1.79	0.65
1:B:905:LEU:CD1	1:B:995:GLU:HB3	2.22	0.65
1:B:1333:ARG:NH2	1:B:1384:GLU:OE2	2.30	0.65
1:A:594:LEU:CD1	1:A:595:ILE:HG13	2.23	0.65
1:A:595:ILE:CD1	1:A:601:ILE:HD11	2.27	0.65
1:A:669:LYS:O	1:A:673:LEU:HD23	1.97	0.65
1:A:739:PRO:HB3	1:A:837:ARG:NH2	2.10	0.65
1:A:1388:PHE:O	1:A:1392:ASN:ND2	2.28	0.65
1:A:1529:ARG:HE	1:A:1571:SER:HB2	1.61	0.65
1:B:941:PHE:HD2	1:B:942:LEU:HD23	1.60	0.65
1:B:500:LEU:HD12	1:B:501:ASP:H	1.60	0.65
1:B:855:GLN:HB2	1:B:892:PHE:CD2	2.32	0.65
1:B:525:ILE:HD11	1:B:559:THR:HG23	1.77	0.64
1:B:978:TYR:CD1	1:B:1022:MET:HG3	2.32	0.64
1:B:1191:THR:HG22	1:B:1192:TYR:H	1.62	0.64
1:B:1216:PHE:CE2	1:B:1247:LYS:HE2	2.32	0.64
1:A:594:LEU:HD12	1:A:595:ILE:CG1	2.23	0.64
1:B:586:TRP:O	1:B:590:LEU:HD23	1.98	0.64
1:B:706:VAL:HG11	1:B:865:PHE:CE1	2.33	0.64
1:B:570:MET:SD	1:B:601:ILE:HG12	2.38	0.64
1:B:1453:MET:HE3	1:B:1453:MET:O	1.98	0.64
1:A:1355:GLN:HE22	1:A:1359:ILE:CG2	2.11	0.64
1:A:1351:LEU:CD2	1:A:1394:ILE:HG23	2.28	0.64
1:A:1581:PRO:O	1:A:1582:LEU:HD23	1.96	0.64
1:B:1443:ASN:OD1	1:B:1445:GLN:N	2.31	0.64

*Continued on next page...*

*Continued from previous page...*

Atom-1	Atom-2	Interatomic distance (Å)	Clash overlap (Å)
1:A:1216:PHE:CD2	1:A:1239:PRO:HG2	2.32	0.63
1:B:737:HIS:HB2	1:B:741:CYS:SG	2.38	0.63
1:B:815:GLN:HA	1:B:818:ILE:HG12	1.80	0.63
1:B:1247:LYS:O	1:B:1251:LYS:HD3	1.98	0.63
1:B:679:LYS:HE3	1:B:679:LYS:HA	1.81	0.63
1:B:1122:THR:O	1:B:1126:VAL:HG23	1.98	0.63
1:B:815:GLN:O	1:B:818:ILE:HG13	1.99	0.63
1:B:1214:ILE:CG2	1:B:1215:PRO:HD2	2.29	0.62
1:A:1099:PHE:CD1	1:A:1130:LYS:HD2	2.33	0.62
1:B:657:GLU:HG3	1:B:756:LYS:CG	2.29	0.62
1:B:722:ALA:O	1:B:827:LYS:HD3	2.00	0.62
1:B:769:ASP:O	1:B:773:ILE:HG13	1.99	0.62
1:A:390:GLU:OE1	1:A:608:ALA:HB3	1.99	0.62
1:B:671:LYS:HA	1:B:674:GLU:HG2	1.81	0.62
1:B:742:GLY:HA2	3:B:1601:ATP:O2A	2.00	0.62
1:B:869:LEU:HG	1:B:873:LYS:HE3	1.81	0.62
1:B:1086:GLN:OE1	1:B:1119:ILE:HA	2.00	0.62
1:A:1351:LEU:HD21	1:A:1394:ILE:HG23	1.80	0.62
1:A:1433:PHE:CD2	1:A:1437:LEU:HD11	2.35	0.61
1:B:897:ILE:HG23	1:B:988:ILE:CD1	2.30	0.61
1:B:1090:ARG:HA	1:B:1093:TYR:CE2	2.35	0.61
1:A:1390:LEU:HG	1:A:1394:ILE:CD1	2.30	0.61
1:B:883:TYR:O	1:B:887:ILE:HG13	2.00	0.61
1:B:1210:ILE:O	1:B:1213:LEU:HB2	2.00	0.61
1:B:574:LEU:HD11	1:B:606:ILE:HD11	1.81	0.61
1:B:688:LYS:HE3	1:B:744:THR:HG21	1.82	0.61
1:B:815:GLN:HA	1:B:818:ILE:CG1	2.31	0.61
1:A:1434:LEU:HA	1:A:1437:LEU:CD1	2.28	0.61
1:B:417:THR:HG22	1:B:544:LEU:HB3	1.81	0.61
1:B:1134:TRP:CH2	1:B:1152:LEU:HD11	2.35	0.61
1:B:1135:ILE:HD11	1:B:1210:ILE:CG1	2.31	0.61
1:A:427:HIS:CE1	1:A:612:GLU:HG3	2.36	0.61
1:B:710:LYS:HD2	1:B:851:ILE:CG2	2.30	0.61
1:B:1149:LEU:O	1:B:1153:LEU:HG	2.01	0.61
1:A:397:LEU:HD13	1:A:574:LEU:HD13	1.83	0.61
1:B:1110:LYS:HA	1:B:1119:ILE:HG21	1.83	0.61
1:B:1016:LEU:HA	1:B:1019:ASP:OD2	2.01	0.61
1:A:1306:ILE:HG22	1:A:1307:PHE:HD1	1.64	0.60
1:A:1352:ILE:HD11	1:A:1495:LYS:HD2	1.82	0.60
1:B:763:LEU:HB3	1:B:766:LYS:NZ	2.15	0.60
1:A:726:LYS:CD	1:A:727:PRO:HD2	2.30	0.60

*Continued on next page...*



*Continued from previous page...*

Atom-1	Atom-2	Interatomic distance (Å)	Clash overlap (Å)
1:A:1344:PHE:CE1	1:A:1390:LEU:HD22	2.36	0.60
1:B:643:LYS:HG2	1:B:645:GLU:OE1	2.00	0.60
1:B:769:ASP:OD2	1:B:772:GLU:N	2.34	0.60
1:A:1355:GLN:HE22	1:A:1359:ILE:HG21	1.65	0.60
1:B:615:ASN:O	1:B:619:LEU:HD23	2.01	0.60
1:A:1407:PRO:O	1:A:1410:LYS:HG2	2.01	0.60
1:B:734:HIS:HB3	1:B:736:TYR:CE1	2.37	0.60
1:B:808:TYR:HE2	1:B:1282:ASN:HB3	1.66	0.60
1:A:1144:ILE:HD11	1:A:1149:LEU:HB2	1.83	0.60
1:A:1337:VAL:HG22	1:A:1342:ASP:OD2	2.02	0.60
1:B:1125:GLN:OE1	1:B:1128:LYS:HE2	2.02	0.60
1:A:1434:LEU:CA	1:A:1437:LEU:HD12	2.27	0.60
1:A:389:ARG:HE	1:A:389:ARG:HA	1.67	0.60
1:A:1301:LYS:O	1:A:1304:VAL:HG12	2.01	0.60
1:B:643:LYS:HD3	1:B:643:LYS:N	2.17	0.60
1:B:703:SER:O	1:B:868:LYS:NZ	2.35	0.60
1:A:630:ARG:HG2	1:A:630:ARG:HH11	1.67	0.59
1:B:1388:PHE:HZ	1:B:1406:LYS:HD3	1.65	0.59
1:A:737:HIS:HB2	1:A:741:CYS:SG	2.41	0.59
1:A:740:GLY:HA2	3:A:1602:ATP:O1B	2.02	0.59
1:A:1244:ASN:O	1:A:1248:LEU:HG	2.03	0.59
1:B:912:THR:O	1:B:916:LYS:HG3	2.02	0.59
1:B:1325:GLU:OE2	1:B:1377:THR:HG23	2.02	0.59
1:B:794:VAL:HB	1:B:830:VAL:HG22	1.85	0.59
1:A:1407:PRO:HD2	1:A:1410:LYS:CD	2.32	0.59
1:B:713:ARG:NH1	1:B:851:ILE:HG12	2.18	0.59
1:B:927:TYR:CE2	1:B:1054:PHE:HA	2.37	0.59
1:B:913:LYS:CA	1:B:916:LYS:HE3	2.33	0.59
1:B:916:LYS:HD2	1:B:941:PHE:HZ	1.68	0.59
1:B:919:SER:HB3	1:B:996:LEU:HD11	1.85	0.59
1:B:1050:TRP:HB2	1:B:1051:PHE:CD1	2.38	0.59
1:B:1107:LYS:O	1:B:1111:ILE:HG13	2.02	0.59
1:B:1131:ILE:HD11	1:B:1156:ALA:N	2.17	0.59
1:B:1325:GLU:HA	1:B:1328:GLN:OE1	2.03	0.59
1:B:1231:PHE:CZ	1:B:1257:LEU:HB2	2.38	0.59
1:B:655:ILE:HD11	1:B:691:TRP:CE3	2.38	0.58
1:B:718:ILE:HD11	1:B:795:LEU:CD1	2.31	0.58
1:A:427:HIS:ND1	1:A:612:GLU:HG3	2.17	0.58
1:B:1424:LEU:HD23	1:B:1432:TYR:OH	2.03	0.58
1:A:1520:GLU:OE1	1:A:1522:LYS:HG3	2.02	0.58
1:B:761:ALA:HB3	1:B:796:LEU:HD13	1.83	0.58

*Continued on next page...*



*Continued from previous page...*

Atom-1	Atom-2	Interatomic distance (Å)	Clash overlap (Å)
1:A:711:TYR:OH	1:A:753:GLU:HG3	2.03	0.58
1:B:916:LYS:HD2	1:B:941:PHE:CZ	2.39	0.58
1:B:1271:PHE:CE1	1:B:1296:VAL:HG21	2.38	0.58
1:B:734:HIS:HB2	1:B:850:SER:OG	2.03	0.58
1:B:869:LEU:HD22	1:B:889:LYS:HG3	1.86	0.58
1:B:1086:GLN:HG3	1:B:1122:THR:HG21	1.86	0.58
1:B:1446:LEU:HG	1:B:1451:GLU:HG3	1.84	0.58
1:B:1460:LEU:CD2	1:B:1580:GLY:HA2	2.32	0.58
1:B:400:GLY:HA3	1:B:409:TYR:HB3	1.85	0.58
1:B:761:ALA:O	1:B:796:LEU:HD12	2.03	0.58
1:B:801:PHE:HD1	1:B:802:GLU:H	1.51	0.58
1:B:973:ILE:HG23	1:B:977:ASN:OD1	2.03	0.58
1:A:798:VAL:HG11	1:A:801:PHE:CE2	2.38	0.58
1:A:1539:LEU:HD23	1:A:1572:PHE:CE2	2.39	0.58
1:B:894:LYS:O	1:B:898:GLU:HG3	2.04	0.58
1:B:925:ASN:ND2	1:B:983:ILE:HG13	2.18	0.58
1:B:717:MET:HE1	1:B:849:ASP:CA	2.33	0.58
1:A:1337:VAL:HA	1:A:1342:ASP:OD2	2.04	0.58
1:B:1301:LYS:O	1:B:1304:VAL:HG22	2.04	0.58
1:B:430:PHE:HB3	1:B:615:ASN:HA	1.85	0.57
1:B:1286:GLN:N	1:B:1286:GLN:OE1	2.36	0.57
1:A:1241:ASP:CG	1:A:1242:PRO:HD2	2.29	0.57
1:B:681:GLU:HG3	1:B:882:PHE:HE1	1.68	0.57
1:B:766:LYS:HZ1	1:B:798:VAL:HG13	1.70	0.57
1:B:1134:TRP:CE2	1:B:1152:LEU:HD21	2.39	0.57
1:A:1308:CYS:HA	1:A:1334:ARG:HD3	1.87	0.57
1:A:1570:VAL:HG12	1:A:1588:ILE:HG12	1.85	0.57
1:B:579:HIS:CG	1:B:580:PRO:HD2	2.40	0.57
1:B:714:LEU:HD22	1:B:735:LEU:CD1	2.35	0.57
1:B:910:ILE:HG21	1:B:1000:TYR:CB	2.35	0.57
1:B:1146:VAL:HG11	1:B:1249:ALA:HB2	1.86	0.57
1:B:1447:ASP:O	1:B:1451:GLU:HG3	2.04	0.57
1:B:910:ILE:HG21	1:B:1000:TYR:HB2	1.87	0.56
1:A:504:LYS:HD2	1:A:505:TYR:CZ	2.40	0.56
1:A:644:LYS:O	1:A:648:ILE:HG13	2.06	0.56
1:A:874:GLU:OE2	1:A:874:GLU:HA	2.05	0.56
1:A:1163:PHE:O	1:A:1167:GLN:HG3	2.05	0.56
1:A:1465:LYS:HA	1:A:1472:HIS:CE1	2.38	0.56
1:B:449:ASN:HA	1:B:453:LYS:HD2	1.86	0.56
1:B:1208:ILE:HG13	1:B:1260:LEU:HD21	1.87	0.56
1:B:808:TYR:CE2	1:B:1282:ASN:HB3	2.40	0.56

*Continued on next page...*

*Continued from previous page...*

Atom-1	Atom-2	Interatomic distance (Å)	Clash overlap (Å)
1:A:1386:LEU:HD23	1:A:1434:LEU:HD12	1.87	0.56
1:A:1520:GLU:OE1	1:A:1521:GLU:N	2.39	0.56
1:B:419:LYS:HA	1:B:443:ASP:CG	2.31	0.56
1:A:1407:PRO:HD2	1:A:1410:LYS:HD3	1.88	0.56
1:B:447:ASN:HA	1:B:452:VAL:CG1	2.35	0.56
1:B:935:LEU:O	1:B:939:GLU:HG3	2.06	0.56
1:B:957:GLU:OE2	1:B:969:LYS:NZ	2.21	0.56
1:B:939:GLU:HB3	1:B:944:ILE:HB	1.88	0.56
1:B:1441:PRO:HG3	1:B:1450:SER:HB2	1.87	0.56
1:A:772:GLU:O	1:A:776:GLN:HG3	2.05	0.56
1:B:576:ILE:HG12	1:B:606:ILE:HD13	1.88	0.56
1:B:1005:SER:HB3	1:B:1058:LEU:HD11	1.88	0.56
1:A:910:ILE:HG13	1:A:910:ILE:O	2.06	0.56
1:B:709:ASP:HA	1:B:860:LYS:HZ2	1.71	0.56
1:B:1325:GLU:O	1:B:1328:GLN:HG2	2.05	0.56
1:B:1336:LEU:HD21	1:B:1368:GLU:CB	2.35	0.56
1:A:1520:GLU:OE1	1:A:1522:LYS:N	2.30	0.55
1:B:703:SER:OG	1:B:704:PRO:HD2	2.06	0.55
1:B:709:ASP:HA	1:B:860:LYS:NZ	2.21	0.55
1:B:391:GLY:N	1:B:392:PRO:HD2	2.21	0.55
1:B:560:PHE:CD1	1:B:590:LEU:HD11	2.41	0.55
1:A:389:ARG:HA	1:A:389:ARG:NE	2.20	0.55
1:B:391:GLY:O	1:B:395:VAL:HG23	2.07	0.55
1:B:448:ILE:HD11	1:B:499:ASP:HB2	1.88	0.55
1:B:683:PHE:CE1	1:B:689:VAL:HB	2.41	0.55
1:B:855:GLN:HB2	1:B:892:PHE:HD2	1.71	0.55
1:A:1216:PHE:HE1	1:A:1246:TYR:HB2	1.72	0.55
1:A:841:PRO:HB2	1:A:852:ALA:HB1	1.89	0.55
1:A:441:GLU:HG3	1:A:443:ASP:H	1.72	0.55
1:A:595:ILE:HD13	1:A:601:ILE:HD11	1.89	0.55
1:B:1416:ARG:NH1	1:B:1456:TYR:OH	2.39	0.55
1:A:1144:ILE:HG22	1:A:1213:LEU:O	2.07	0.55
1:B:871:GLU:OE2	1:B:871:GLU:HA	2.07	0.55
1:B:1128:LYS:HG3	1:B:1203:VAL:HG22	1.88	0.55
1:B:649:MET:HE1	1:B:776:GLN:HA	1.88	0.55
1:B:1399:GLN:HE21	1:B:1402:SER:HA	1.71	0.55
1:A:1219:ASN:OD1	1:A:1225:LYS:HG3	2.07	0.55
1:A:1427:GLN:HG3	1:A:1428:PHE:CE1	2.42	0.54
1:B:695:TYR:CZ	1:B:699:GLU:HG3	2.41	0.54
1:B:1422:ILE:HG23	1:B:1426:TYR:HB2	1.89	0.54
1:A:595:ILE:HD12	1:A:601:ILE:HD11	1.88	0.54

*Continued on next page...*

*Continued from previous page...*

Atom-1	Atom-2	Interatomic distance (Å)	Clash overlap (Å)
1:A:1253:TYR:C	1:A:1255:PRO:HD2	2.32	0.54
1:B:905:LEU:HD12	1:B:995:GLU:CB	2.26	0.54
1:A:1352:ILE:CD1	1:A:1495:LYS:HD2	2.36	0.54
1:B:1110:LYS:NZ	1:B:1114:PRO:HA	2.22	0.54
1:B:869:LEU:CD1	1:B:886:MET:HE1	2.35	0.54
1:B:1130:LYS:CG	1:B:1155:LEU:HD13	2.38	0.54
1:B:1533:ARG:O	1:B:1533:ARG:HG2	2.06	0.54
1:A:551:ASP:OD1	1:A:552:PRO:HD2	2.08	0.54
1:A:1149:LEU:C	1:A:1149:LEU:HD23	2.32	0.54
1:A:1261:LYS:HG3	1:A:1307:PHE:CE2	2.43	0.54
1:B:715:GLU:HG2	1:B:719:GLN:NE2	2.22	0.54
1:B:1211:LEU:HD11	1:B:1257:LEU:HD22	1.89	0.54
1:A:1498:ILE:N	1:A:1498:ILE:HD12	2.23	0.54
1:A:1325:GLU:HB3	1:A:1326:PRO:HD3	1.88	0.54
1:A:1433:PHE:O	1:A:1437:LEU:HD12	2.08	0.54
1:B:1460:LEU:HD23	1:B:1580:GLY:CA	2.35	0.54
1:A:803:GLU:OE1	1:A:1188:ARG:HD3	2.08	0.54
1:A:1149:LEU:HD11	1:A:1250:LEU:HD21	1.88	0.54
1:A:1150:ILE:O	1:A:1154:ASP:OD1	2.24	0.54
1:B:766:LYS:NZ	1:B:798:VAL:HG13	2.23	0.54
1:B:826:GLU:CD	1:B:826:GLU:H	2.12	0.54
1:B:1300:PHE:O	1:B:1304:VAL:HG13	2.07	0.54
1:A:930:ASP:OD1	1:A:930:ASP:O	2.26	0.54
1:B:1219:ASN:HA	1:B:1225:LYS:HG2	1.90	0.54
1:B:481:SER:HA	1:B:870:LYS:HZ2	1.72	0.54
1:B:712:GLU:C	1:B:712:GLU:OE1	2.51	0.54
1:B:432:LYS:O	1:B:459:ARG:NH1	2.41	0.53
1:B:551:ASP:OD1	1:B:552:PRO:HD2	2.08	0.53
1:B:675:PHE:HE1	1:B:696:PHE:HZ	1.57	0.53
1:B:1208:ILE:HG21	1:B:1306:ILE:HD13	1.90	0.53
1:B:432:LYS:O	1:B:459:ARG:CZ	2.56	0.53
1:B:800:ASP:OD2	1:B:837:ARG:NH1	2.39	0.53
1:B:769:ASP:HB3	1:B:772:GLU:CB	2.38	0.53
1:B:1056:GLU:O	1:B:1060:LYS:HG2	2.09	0.53
1:A:1246:TYR:O	1:A:1250:LEU:HD23	2.09	0.53
1:B:441:GLU:OE1	1:B:491:TRP:NE1	2.37	0.53
1:B:1110:LYS:HE2	1:B:1120:SER:OG	2.09	0.53
1:A:1144:ILE:CD1	1:A:1149:LEU:HB2	2.37	0.53
1:A:1286:GLN:HG2	1:A:1287:ASN:OD1	2.09	0.53
1:B:1293:ARG:HH12	1:B:1379:LYS:HG2	1.73	0.53
1:A:1495:LYS:HG3	1:A:1512:TRP:CH2	2.43	0.53

*Continued on next page...*

*Continued from previous page...*

Atom-1	Atom-2	Interatomic distance (Å)	Clash overlap (Å)
1:B:778:THR:HA	1:B:781:ILE:HD12	1.90	0.53
1:A:1281:ARG:NH1	1:A:1472:HIS:O	2.26	0.53
1:A:1529:ARG:HD2	1:A:1572:PHE:C	2.34	0.53
1:B:914:GLU:HG2	1:B:960:MET:HA	1.91	0.53
1:B:1130:LYS:HD3	1:B:1155:LEU:HD13	1.90	0.53
1:B:1446:LEU:HG	1:B:1451:GLU:CG	2.39	0.53
1:A:1151:ALA:HA	1:A:1154:ASP:OD1	2.09	0.53
1:B:480:ILE:HG23	1:B:485:LEU:CB	2.28	0.53
1:A:1144:ILE:HD11	1:A:1149:LEU:CA	2.38	0.53
1:B:481:SER:HA	1:B:870:LYS:HZ1	1.73	0.53
1:B:570:MET:HE1	1:B:601:ILE:HA	1.90	0.53
1:B:860:LYS:HA	1:B:863:ARG:HH21	1.74	0.53
1:B:1399:GLN:HE21	1:B:1402:SER:CA	2.22	0.53
1:A:1406:LYS:HG3	1:A:1410:LYS:HZ1	1.75	0.52
1:A:1465:LYS:O	1:A:1465:LYS:HD3	2.09	0.52
1:A:1484:GLY:N	1:A:1491:ARG:O	2.42	0.52
1:A:1485:LYS:NZ	1:A:1525:GLU:O	2.34	0.52
1:B:901:VAL:O	1:B:905:LEU:HG	2.09	0.52
1:B:996:LEU:HD21	1:B:1007:ILE:HD11	1.91	0.52
1:B:1433:PHE:CE2	1:B:1437:LEU:HD11	2.44	0.52
1:B:1099:PHE:O	1:B:1103:LEU:HG	2.09	0.52
1:B:475:THR:OG1	1:B:478:GLU:HG2	2.09	0.52
1:B:794:VAL:O	1:B:830:VAL:HA	2.10	0.52
1:A:1218:ASP:O	1:A:1224:SER:HB2	2.10	0.52
1:B:1399:GLN:CG	1:B:1402:SER:HB2	2.38	0.52
1:A:809:LEU:HD13	1:A:1187:ARG:C	2.34	0.52
1:B:537:GLY:O	1:B:538:LYS:HD3	2.08	0.52
1:B:550:ASP:OD1	1:B:550:ASP:N	2.43	0.52
1:A:710:LYS:HD2	1:A:851:ILE:HD11	1.90	0.52
1:A:1309:LEU:N	1:A:1334:ARG:HD3	2.25	0.52
1:B:913:LYS:N	1:B:916:LYS:HE3	2.25	0.52
1:A:1373:LEU:HD22	1:A:1380:ILE:HD12	1.92	0.52
1:A:932:THR:HG22	1:A:982:ARG:HB3	1.92	0.52
1:B:395:VAL:HG22	1:B:621:LEU:HD22	1.91	0.52
1:B:535:PRO:HG2	1:B:538:LYS:CB	2.36	0.52
1:A:518:ALA:O	1:A:522:ARG:HG2	2.09	0.52
1:A:536:ARG:HE	1:A:536:ARG:HA	1.75	0.52
1:B:467:SER:HA	1:B:470:VAL:CG2	2.36	0.52
1:B:691:TRP:HH2	1:B:762:VAL:HG21	1.75	0.52
1:B:913:LYS:HA	1:B:916:LYS:CE	2.39	0.52
1:A:1440:TRP:CA	1:A:1453:MET:HE2	2.32	0.52

*Continued on next page...*

*Continued from previous page...*

Atom-1	Atom-2	Interatomic distance (Å)	Clash overlap (Å)
1:B:412:GLN:HB2	1:B:534:MET:CE	2.26	0.52
1:B:927:TYR:HE2	1:B:1054:PHE:HA	1.73	0.52
1:B:1116:ASN:HB3	1:B:1119:ILE:HG12	1.92	0.52
1:B:1495:LYS:NZ	1:B:1499:ASP:OD2	2.43	0.52
1:B:621:LEU:HD12	1:B:621:LEU:O	2.10	0.51
1:B:652:LEU:HD21	1:B:777:VAL:HG22	1.91	0.51
1:A:730:THR:OG1	1:A:811:GLN:HG3	2.10	0.51
1:A:486:TYR:OH	1:A:533:ILE:O	2.27	0.51
1:B:801:PHE:HE2	1:B:810:LEU:HG	1.76	0.51
1:A:576:ILE:CG2	1:A:614:ILE:HD13	2.41	0.51
1:B:710:LYS:HD2	1:B:851:ILE:HG21	1.92	0.51
1:B:1271:PHE:CD1	1:B:1296:VAL:HG21	2.45	0.51
1:A:570:MET:HE1	1:A:601:ILE:HA	1.93	0.51
1:B:622:LYS:O	1:B:623:SER:HB3	2.11	0.51
1:B:867:LEU:C	1:B:867:LEU:HD23	2.36	0.51
1:B:1191:THR:HG22	1:B:1192:TYR:N	2.25	0.51
1:B:1306:ILE:HG22	1:B:1307:PHE:N	2.26	0.51
1:B:455:TYR:HD2	1:B:461:ALA:HB2	1.75	0.51
1:B:666:GLU:HB3	1:B:672:PHE:CE2	2.46	0.51
1:B:714:LEU:CD2	1:B:735:LEU:HD13	2.40	0.51
1:B:1331:ARG:HA	1:B:1334:ARG:HD2	1.93	0.51
1:B:1490:GLU:OE1	1:B:1490:GLU:HA	2.11	0.51
1:A:651:ALA:HB2	1:A:768:VAL:HG21	1.92	0.51
1:B:681:GLU:O	1:B:685:ARG:HG3	2.10	0.51
1:B:1119:ILE:HD13	1:B:1119:ILE:N	2.24	0.51
1:B:1128:LYS:HG3	1:B:1203:VAL:CG2	2.41	0.51
1:A:630:ARG:HG2	1:A:630:ARG:NH1	2.26	0.50
1:B:1454:LYS:HD2	1:B:1454:LYS:O	2.10	0.50
1:A:712:GLU:OE2	1:A:712:GLU:HA	2.11	0.50
1:B:917:LEU:HD22	1:B:942:LEU:HD21	1.93	0.50
1:B:1265:LYS:HD3	1:B:1303:TYR:OH	2.11	0.50
1:A:845:ALA:HB2	1:A:852:ALA:HB2	1.92	0.50
1:A:1251:LYS:O	1:A:1251:LYS:HD3	2.12	0.50
1:A:1415:LEU:CD2	1:A:1438:LEU:HD12	2.41	0.50
1:B:919:SER:CB	1:B:996:LEU:HD11	2.42	0.50
1:B:703:SER:HB3	1:B:868:LYS:HD2	1.92	0.50
1:B:815:GLN:HA	1:B:818:ILE:HD11	1.92	0.50
1:B:714:LEU:HD13	1:B:851:ILE:HD11	1.93	0.50
1:B:1104:ASN:O	1:B:1108:GLN:HG2	2.11	0.50
1:B:1127:TYR:CD2	1:B:1158:HIS:HB3	2.47	0.50
1:B:1210:ILE:HA	1:B:1213:LEU:HD12	1.93	0.50

*Continued on next page...*

*Continued from previous page...*

Atom-1	Atom-2	Interatomic distance (Å)	Clash overlap (Å)
1:A:421:HIS:CG	1:A:422:PRO:HD2	2.47	0.50
1:A:843:LYS:HG3	1:A:846:ARG:NH1	2.25	0.50
1:A:894:LYS:HE2	1:A:898:GLU:OE2	2.11	0.50
1:B:804:GLN:H	1:B:804:GLN:CD	2.19	0.50
1:B:1350:TYR:CD2	1:B:1362:MET:HE1	2.46	0.50
1:B:1446:LEU:CD2	1:B:1451:GLU:HG2	2.42	0.50
1:A:799:ASP:OD1	1:A:800:ASP:N	2.45	0.50
1:A:1324:SER:OG	1:A:1327:LEU:HG	2.11	0.50
1:A:1581:PRO:C	1:A:1582:LEU:HD23	2.36	0.50
1:B:737:HIS:HA	1:B:853:VAL:O	2.12	0.50
1:B:983:ILE:HD12	1:B:989:ALA:HB2	1.92	0.50
1:B:528:LEU:O	1:B:534:MET:HG2	2.11	0.50
1:B:660:CYS:HB2	1:B:695:TYR:CD1	2.46	0.50
1:B:840:ASN:OD1	1:B:843:LYS:HD2	2.12	0.50
1:B:1207:THR:HG21	1:B:1256:TYR:CE2	2.39	0.50
1:B:761:ALA:HB3	1:B:796:LEU:CD1	2.42	0.50
1:B:1214:ILE:HG21	1:B:1216:PHE:CE1	2.47	0.50
1:B:769:ASP:OD2	1:B:771:SER:HB3	2.12	0.49
1:B:1453:MET:HE3	1:B:1456:TYR:HB2	1.93	0.49
1:A:1223:LEU:HG	1:A:1227:TYR:HE2	1.77	0.49
1:A:1488:ARG:HB2	1:A:1488:ARG:HH11	1.75	0.49
1:B:1452:GLN:HB2	1:B:1456:TYR:CE2	2.47	0.49
1:B:443:ASP:OD1	1:B:445:GLU:HG2	2.13	0.49
1:B:462:ASN:O	1:B:491:TRP:N	2.41	0.49
1:B:1127:TYR:CE2	1:B:1158:HIS:HB3	2.46	0.49
1:B:1430:GLU:HB2	1:B:1431:PRO:HD3	1.94	0.49
1:A:937:GLN:HA	1:A:940:LYS:HG2	1.94	0.49
1:A:1426:TYR:HB2	1:A:1432:TYR:OH	2.12	0.49
1:B:652:LEU:HD21	1:B:777:VAL:CG2	2.42	0.49
1:B:1052:SER:O	1:B:1056:GLU:HG2	2.13	0.49
1:A:711:TYR:CE2	1:A:750:ILE:HD13	2.47	0.49
1:B:717:MET:HE2	1:B:733:ILE:HG12	1.94	0.49
1:B:918:PHE:CZ	1:B:966:ILE:HD11	2.48	0.49
1:B:1255:PRO:O	1:B:1259:LYS:HG3	2.12	0.49
1:A:655:ILE:N	1:A:655:ILE:HD13	2.26	0.49
1:A:809:LEU:HD13	1:A:1188:ARG:N	2.27	0.49
1:B:1110:LYS:HZ2	1:B:1114:PRO:HA	1.77	0.49
1:A:594:LEU:C	1:A:595:ILE:HG13	2.38	0.49
1:B:480:ILE:HD13	1:B:486:TYR:HE2	1.77	0.49
1:B:711:TYR:OH	1:B:753:GLU:HG3	2.12	0.49
1:B:1209:GLN:HE22	1:B:1213:LEU:HD21	1.78	0.49

*Continued on next page...*

*Continued from previous page...*

Atom-1	Atom-2	Interatomic distance (Å)	Clash overlap (Å)
1:A:1079:ASN:CB	1:A:1080:PRO:HD3	2.43	0.49
1:A:1529:ARG:HE	1:A:1571:SER:C	2.20	0.49
1:B:668:ASP:HB3	1:B:671:LYS:HB2	1.94	0.49
1:B:878:ASN:HB2	1:B:881:ASP:CG	2.38	0.49
1:B:1130:LYS:HD3	1:B:1155:LEU:CD1	2.43	0.49
1:A:1415:LEU:HD22	1:A:1438:LEU:HD12	1.94	0.48
1:A:1432:TYR:HB2	1:A:1460:LEU:HD13	1.95	0.48
1:B:579:HIS:HE1	1:B:581:HIS:CD2	2.31	0.48
1:B:815:GLN:HA	1:B:818:ILE:CD1	2.43	0.48
1:A:1275:PHE:CE1	1:A:1289:GLU:HG3	2.48	0.48
1:B:467:SER:CA	1:B:470:VAL:HG22	2.39	0.48
1:A:605:CYS:SG	1:A:606:ILE:N	2.86	0.48
1:B:417:THR:CG2	1:B:544:LEU:HB3	2.43	0.48
1:B:1165:GLU:O	1:B:1169:GLN:HG3	2.14	0.48
1:A:1222:GLU:H	1:A:1222:GLU:CD	2.20	0.48
1:B:652:LEU:HA	1:B:762:VAL:O	2.13	0.48
1:B:797:LEU:HA	1:B:833:LEU:O	2.14	0.48
1:A:868:LYS:O	1:A:872:ILE:HG13	2.13	0.48
1:A:873:LYS:HZ3	1:A:873:LYS:HB2	1.78	0.48
1:A:884:SER:HB3	3:A:1602:ATP:O3'	2.13	0.48
1:B:778:THR:CG2	1:B:821:LYS:HD2	2.37	0.48
1:A:403:ASP:O	1:A:621:LEU:HD22	2.14	0.48
1:B:431:LEU:HD21	1:B:544:LEU:HD22	1.94	0.48
1:B:515:ARG:O	1:B:515:ARG:HG2	2.14	0.48
1:B:801:PHE:CE2	1:B:810:LEU:HG	2.48	0.48
1:B:1071:LEU:HD13	1:B:1088:LEU:HA	1.96	0.48
1:A:1375:GLN:NE2	1:A:1378:VAL:O	2.45	0.48
1:A:695:TYR:CZ	1:A:699:GLU:HG3	2.49	0.48
1:A:739:PRO:HB3	1:A:837:ARG:HE	1.79	0.48
1:A:1286:GLN:CD	1:A:1286:GLN:H	2.22	0.48
1:B:801:PHE:CZ	1:B:810:LEU:HD11	2.49	0.48
1:B:1275:PHE:CZ	1:B:1293:ARG:HA	2.48	0.48
1:B:1408:VAL:HB	1:B:1489:LEU:HD23	1.96	0.48
1:B:1093:TYR:CE2	1:B:1126:VAL:HG22	2.48	0.48
1:B:1218:ASP:OD1	1:B:1219:ASN:N	2.47	0.48
1:A:1070:VAL:O	1:A:1074:SER:OG	2.32	0.47
1:A:1134:TRP:NE1	1:A:1138:ASN:HD22	2.12	0.47
1:B:1059:HIS:CE1	1:B:1095:LYS:HD3	2.49	0.47
1:B:1051:PHE:HB2	1:B:1056:GLU:OE2	2.14	0.47
1:B:1204:GLY:HA2	1:B:1260:LEU:HD11	1.96	0.47
1:A:1149:LEU:HD23	1:A:1150:ILE:N	2.29	0.47

*Continued on next page...*



*Continued from previous page...*

Atom-1	Atom-2	Interatomic distance (Å)	Clash overlap (Å)
1:A:1279:LYS:HB3	1:A:1478:ILE:HD11	1.96	0.47
1:A:1308:CYS:O	1:A:1309:LEU:HB2	2.13	0.47
1:B:672:PHE:HE2	1:B:701:TYR:CE2	2.32	0.47
1:B:1214:ILE:HG21	1:B:1216:PHE:CZ	2.49	0.47
1:A:1396:SER:CB	1:A:1405:VAL:HG21	2.43	0.47
1:B:664:LEU:HD23	1:B:664:LEU:O	2.15	0.47
1:B:956:PHE:CD1	1:B:956:PHE:C	2.93	0.47
1:B:518:ALA:O	1:B:522:ARG:HG2	2.15	0.47
1:B:583:PHE:CE1	1:B:605:CYS:HB2	2.49	0.47
1:B:1003:ASN:N	1:B:1003:ASN:OD1	2.47	0.47
1:B:1125:GLN:OE1	1:B:1125:GLN:HA	2.15	0.47
1:A:827:LYS:HB3	1:A:828:PRO:HD2	1.97	0.47
1:A:1225:LYS:O	1:A:1229:VAL:HG23	2.15	0.47
1:B:622:LYS:HD2	1:B:623:SER:H	1.80	0.47
1:B:675:PHE:CE1	1:B:696:PHE:HZ	2.33	0.47
1:B:770:PHE:CE2	1:B:810:LEU:HD21	2.50	0.47
1:A:1086:GLN:NE2	1:A:1122:THR:OG1	2.40	0.47
1:A:1173:ARG:HG2	1:A:1173:ARG:HH11	1.80	0.47
1:A:1383:LYS:NZ	1:A:1383:LYS:HB3	2.29	0.47
1:A:1415:LEU:O	1:A:1415:LEU:HD12	2.15	0.47
1:B:719:GLN:O	1:B:722:ALA:HB3	2.14	0.47
1:B:960:MET:CE	1:B:963:TYR:HD2	2.26	0.47
1:B:1050:TRP:HB3	1:B:1090:ARG:NH2	2.27	0.47
1:B:1128:LYS:NZ	1:B:1199:GLY:HA2	2.30	0.47
1:A:1274:TYR:CE1	1:A:1475:LYS:HD2	2.49	0.47
1:A:1389:ILE:O	1:A:1393:ILE:HG13	2.15	0.47
1:A:1428:PHE:CD1	1:A:1428:PHE:N	2.81	0.47
1:B:1209:GLN:NE2	1:B:1213:LEU:HD21	2.29	0.47
1:B:549:VAL:HG23	1:B:549:VAL:O	2.14	0.47
1:B:918:PHE:HZ	1:B:966:ILE:HD11	1.80	0.47
1:B:1274:TYR:O	1:B:1278:LEU:HB2	2.15	0.47
1:A:1223:LEU:HG	1:A:1227:TYR:CE2	2.50	0.46
1:B:433:GLU:OE1	1:B:619:LEU:HD13	2.15	0.46
1:B:485:LEU:O	1:B:486:TYR:HB2	2.15	0.46
1:B:525:ILE:CD1	1:B:559:THR:HG23	2.44	0.46
1:B:571:GLU:HA	1:B:571:GLU:OE1	2.14	0.46
1:B:973:ILE:HA	1:B:976:GLY:O	2.15	0.46
1:B:1229:VAL:O	1:B:1232:VAL:HG22	2.14	0.46
1:B:914:GLU:HB3	1:B:960:MET:HE3	1.97	0.46
1:B:712:GLU:OE1	1:B:713:ARG:N	2.49	0.46
1:B:837:ARG:HD3	3:B:1601:ATP:O1G	2.14	0.46

*Continued on next page...*



*Continued from previous page...*

Atom-1	Atom-2	Interatomic distance (Å)	Clash overlap (Å)
1:B:867:LEU:HD23	1:B:867:LEU:O	2.15	0.46
1:B:1134:TRP:CD2	1:B:1152:LEU:HD21	2.50	0.46
1:A:1121:ASP:O	1:A:1125:GLN:HG2	2.15	0.46
1:B:1496:GLY:O	1:B:1500:GLN:HG3	2.15	0.46
1:A:536:ARG:HH21	1:A:539:PHE:HE1	1.64	0.46
1:A:847:ILE:HG22	1:A:848:PRO:CD	2.44	0.46
1:A:1149:LEU:O	1:A:1153:LEU:HG	2.15	0.46
1:A:1362:MET:HE3	1:A:1362:MET:O	2.16	0.46
1:B:781:ILE:HG12	1:B:794:VAL:CG2	2.46	0.46
1:A:1570:VAL:CG1	1:A:1588:ILE:HG12	2.46	0.46
1:B:981:VAL:HG12	1:B:982:ARG:N	2.29	0.46
1:B:1130:LYS:CD	1:B:1155:LEU:HD13	2.45	0.46
1:B:1351:LEU:HD11	1:B:1481:PHE:CZ	2.51	0.46
1:A:1269:ASP:OD1	1:A:1343:LYS:HE2	2.15	0.46
1:B:606:ILE:HD12	1:B:606:ILE:N	2.27	0.46
1:B:707:LYS:HD3	1:B:711:TYR:CE2	2.51	0.46
1:B:925:ASN:HD22	1:B:983:ILE:CG1	2.28	0.46
1:A:1377:THR:OG1	1:A:1378:VAL:HG23	2.16	0.46
1:B:446:SER:O	1:B:450:GLY:N	2.43	0.46
1:B:1206:TYR:O	1:B:1210:ILE:HG13	2.16	0.46
1:A:668:ASP:OD2	1:A:671:LYS:HD2	2.16	0.46
1:A:785:ALA:HA	1:A:788:ARG:HH11	1.81	0.46
1:A:944:ILE:HD11	1:A:959:LYS:CG	2.46	0.46
1:A:1107:LYS:O	1:A:1111:ILE:HG13	2.16	0.46
1:A:1221:ASN:OD1	1:A:1223:LEU:HB3	2.16	0.46
1:A:1304:VAL:O	1:A:1309:LEU:HD13	2.16	0.46
1:A:1511:LEU:CD2	1:A:1517:VAL:HG22	2.41	0.46
1:B:395:VAL:HG22	1:B:621:LEU:CD2	2.46	0.46
1:B:966:ILE:O	1:B:984:ILE:HG23	2.16	0.46
1:B:1290:ALA:C	1:B:1294:ARG:HH21	2.23	0.46
1:B:1485:LYS:HE3	1:B:1527:LEU:O	2.15	0.46
1:A:1353:LYS:HZ3	1:A:1353:LYS:HB2	1.81	0.46
1:A:1488:ARG:HB2	1:A:1488:ARG:CZ	2.45	0.46
1:B:741:CYS:SG	1:B:742:GLY:N	2.89	0.46
1:B:1165:GLU:HG2	1:B:1169:GLN:NE2	2.31	0.46
1:B:1221:ASN:HB3	1:B:1224:SER:HB2	1.98	0.46
1:B:1489:LEU:HD13	1:B:1489:LEU:HA	1.84	0.46
1:B:1205:LEU:C	1:B:1205:LEU:HD23	2.40	0.45
1:A:1208:ILE:HG13	1:A:1260:LEU:HD23	1.97	0.45
1:B:583:PHE:HE1	1:B:605:CYS:HB2	1.82	0.45
1:B:717:MET:CE	1:B:849:ASP:HA	2.39	0.45

*Continued on next page...*

*Continued from previous page...*

Atom-1	Atom-2	Interatomic distance (Å)	Clash overlap (Å)
1:B:1453:MET:CE	1:B:1456:TYR:HB2	2.46	0.45
1:A:654:ILE:C	1:A:655:ILE:HD13	2.42	0.45
1:A:1251:LYS:HE2	1:A:1254:ILE:HD12	1.98	0.45
1:B:901:VAL:HG11	1:B:991:PHE:C	2.41	0.45
1:B:912:THR:C	1:B:916:LYS:HE3	2.42	0.45
1:A:1131:ILE:O	1:A:1135:ILE:HG12	2.17	0.45
1:B:691:TRP:CD1	1:B:691:TRP:H	2.35	0.45
1:B:842:GLU:OE2	1:B:854:ILE:HD13	2.16	0.45
1:B:1536:ASN:OD1	1:B:1565:ARG:NH2	2.45	0.45
1:B:734:HIS:HB3	1:B:736:TYR:HE1	1.80	0.45
1:B:960:MET:HB3	1:B:963:TYR:HB2	1.99	0.45
1:A:1434:LEU:HD23	1:A:1437:LEU:CD1	2.47	0.45
1:A:1527:LEU:HB3	1:A:1573:TYR:CD1	2.52	0.45
1:B:557:ILE:HD11	1:B:589:LEU:HD13	1.99	0.45
1:A:1532:GLY:O	1:A:1570:VAL:N	2.50	0.45
1:B:772:GLU:O	1:B:776:GLN:HG3	2.17	0.45
1:B:796:LEU:HD12	1:B:796:LEU:HA	1.76	0.45
1:A:714:LEU:O	1:A:718:ILE:HG13	2.17	0.45
1:A:873:LYS:HG3	1:A:879:PHE:CE1	2.51	0.45
1:A:1194:ILE:HD11	1:A:1292:THR:HG21	1.99	0.45
1:A:1344:PHE:CE2	1:A:1430:GLU:HB3	2.52	0.45
1:A:1390:LEU:CG	1:A:1394:ILE:HD11	2.37	0.45
1:B:973:ILE:HG22	1:B:973:ILE:O	2.16	0.45
1:B:467:SER:O	1:B:470:VAL:HG22	2.17	0.45
1:B:893:ASN:HB3	1:B:895:GLU:CD	2.42	0.45
1:B:1336:LEU:HD21	1:B:1368:GLU:HB3	1.98	0.45
1:B:652:LEU:HD13	1:B:776:GLN:OE1	2.16	0.44
1:B:1432:TYR:C	1:B:1460:LEU:HD13	2.42	0.44
1:B:1544:GLY:HA3	1:B:1547:GLU:O	2.16	0.44
1:A:1308:CYS:C	1:A:1334:ARG:HD3	2.42	0.44
1:A:1406:LYS:HG3	1:A:1410:LYS:NZ	2.33	0.44
1:A:1434:LEU:HD23	1:A:1437:LEU:HD13	1.98	0.44
1:B:666:GLU:HA	1:B:672:PHE:CD2	2.49	0.44
1:A:631:LEU:HA	1:A:639:THR:O	2.18	0.44
1:A:798:VAL:HG11	1:A:801:PHE:CD2	2.53	0.44
1:A:1394:ILE:HG22	1:A:1398:ILE:HD11	1.99	0.44
1:A:1407:PRO:HD2	1:A:1410:LYS:HD2	1.98	0.44
1:B:446:SER:C	1:B:452:VAL:HG12	2.43	0.44
1:B:709:ASP:OD1	1:B:709:ASP:N	2.49	0.44
1:B:1272:ASP:O	1:B:1276:VAL:HG23	2.18	0.44
1:A:1415:LEU:HD21	1:A:1435:ALA:HA	1.99	0.44

*Continued on next page...*

*Continued from previous page...*

Atom-1	Atom-2	Interatomic distance (Å)	Clash overlap (Å)
1:A:1570:VAL:HG12	1:A:1588:ILE:HA	1.99	0.44
1:A:1194:ILE:HD12	1:A:1271:PHE:HE1	1.83	0.44
1:A:1408:VAL:HG23	1:A:1412:LYS:NZ	2.33	0.44
1:B:394:LEU:HD12	1:B:394:LEU:O	2.18	0.44
1:B:971:GLU:HA	1:B:979:CYS:HA	1.98	0.44
1:B:804:GLN:CD	1:B:804:GLN:N	2.76	0.44
1:B:1276:VAL:HG21	1:B:1377:THR:O	2.17	0.44
1:B:1304:VAL:O	1:B:1308:CYS:HB2	2.18	0.44
1:A:421:HIS:ND1	1:A:423:ASP:OD2	2.51	0.44
1:A:1075:ILE:HG13	1:A:1084:ILE:CG2	2.48	0.44
1:B:441:GLU:CD	1:B:491:TRP:HE1	2.24	0.44
1:B:652:LEU:O	1:B:654:ILE:HD13	2.17	0.44
1:B:736:TYR:HD2	1:B:844:SER:HB2	1.82	0.44
1:B:740:GLY:HA2	3:B:1601:ATP:O1B	2.17	0.44
1:B:896:TYR:O	1:B:900:VAL:HG23	2.18	0.44
1:B:960:MET:HE3	1:B:963:TYR:HD2	1.82	0.44
1:B:972:VAL:N	1:B:978:TYR:O	2.51	0.44
1:B:1248:LEU:O	1:B:1251:LYS:HB2	2.17	0.44
1:B:1362:MET:O	1:B:1366:VAL:HG23	2.18	0.44
1:A:1194:ILE:O	1:A:1194:ILE:HG13	2.18	0.44
1:A:1427:GLN:HG3	1:A:1428:PHE:CD1	2.53	0.44
1:A:1441:PRO:CD	1:A:1453:MET:HG2	2.47	0.44
1:B:428:LEU:HD12	1:B:428:LEU:HA	1.88	0.44
1:B:798:VAL:HG11	1:B:801:PHE:CD2	2.53	0.44
1:B:1229:VAL:HA	1:B:1232:VAL:HG22	1.99	0.44
1:B:1265:LYS:O	1:B:1269:ASP:OD2	2.35	0.44
1:B:1446:LEU:HD23	1:B:1451:GLU:HG2	1.99	0.44
1:A:1171:GLU:HG3	1:A:1192:TYR:OH	2.18	0.43
1:A:1420:GLN:CB	1:A:1421:PRO:HD3	2.39	0.43
1:A:1573:TYR:HD2	1:A:1585:ASP:HB3	1.83	0.43
1:B:420:CYS:SG	1:B:421:HIS:N	2.90	0.43
1:B:683:PHE:CE1	3:B:1601:ATP:H2'	2.53	0.43
1:B:755:ARG:HA	1:B:760:CYS:SG	2.58	0.43
1:B:797:LEU:HD12	1:B:833:LEU:O	2.18	0.43
1:B:890:THR:O	1:B:893:ASN:N	2.48	0.43
1:B:1065:GLU:H	1:B:1065:GLU:CD	2.25	0.43
1:A:842:GLU:OE1	1:A:842:GLU:HA	2.19	0.43
1:B:956:PHE:O	1:B:960:MET:HG2	2.18	0.43
1:B:529:THR:HB	1:B:566:ASP:OD2	2.17	0.43
1:B:737:HIS:NE2	1:B:837:ARG:HG2	2.33	0.43
1:B:816:THR:CG2	1:B:820:LYS:HE3	2.41	0.43

*Continued on next page...*

*Continued from previous page...*

Atom-1	Atom-2	Interatomic distance (Å)	Clash overlap (Å)
1:B:1247:LYS:HB3	1:B:1251:LYS:NZ	2.33	0.43
1:B:477:ASN:OD1	1:B:477:ASN:N	2.51	0.43
1:B:577:CYS:SG	1:B:583:PHE:HB2	2.59	0.43
1:B:652:LEU:HD12	1:B:652:LEU:N	2.33	0.43
1:B:714:LEU:HD22	1:B:735:LEU:HD13	1.98	0.43
1:A:732:ILE:HD13	1:A:807:VAL:HG22	2.01	0.43
1:A:944:ILE:HD11	1:A:959:LYS:HG2	1.99	0.43
1:A:1147:ASP:OD1	1:A:1147:ASP:N	2.50	0.43
1:A:1223:LEU:HA	1:A:1226:ARG:HD2	2.00	0.43
1:B:431:LEU:HD23	1:B:431:LEU:HA	1.82	0.43
1:B:1092:PHE:HE1	1:B:1096:LYS:NZ	2.16	0.43
1:A:777:VAL:O	1:A:781:ILE:HG13	2.19	0.43
1:A:1122:THR:O	1:A:1126:VAL:HG23	2.19	0.43
1:B:798:VAL:HG11	1:B:801:PHE:CE2	2.53	0.43
1:B:1388:PHE:HZ	1:B:1406:LYS:CD	2.30	0.43
1:B:1219:ASN:O	1:B:1225:LYS:HD2	2.19	0.43
1:B:1430:GLU:OE1	1:B:1430:GLU:N	2.44	0.43
1:A:497:ARG:HH21	1:A:499:ASP:CG	2.26	0.43
1:A:837:ARG:HH11	1:A:929:PRO:HB3	1.84	0.43
1:A:1513:GLN:OE1	1:A:1513:GLN:HA	2.18	0.43
1:B:1449:HIS:HA	1:B:1452:GLN:HE22	1.84	0.43
1:B:1558:LEU:N	1:B:1558:LEU:HD22	2.34	0.43
1:A:669:LYS:HB3	1:A:669:LYS:HE3	1.87	0.43
1:A:888:MET:HE3	1:A:888:MET:HB3	1.84	0.43
1:A:1386:LEU:CD2	1:A:1431:PRO:HA	2.48	0.43
1:B:570:MET:HE1	1:B:601:ILE:CA	2.48	0.43
1:B:1071:LEU:HD22	1:B:1084:ILE:CD1	2.48	0.43
1:B:1071:LEU:CD1	1:B:1088:LEU:HD13	2.48	0.43
1:B:668:ASP:O	1:B:669:LYS:HB3	2.19	0.43
1:B:770:PHE:CE2	1:B:810:LEU:CD2	3.02	0.43
1:B:878:ASN:OD1	1:B:878:ASN:N	2.46	0.43
1:B:1008:MET:HG3	1:B:1012:LEU:HD12	2.01	0.43
1:B:1262:PHE:CE1	1:B:1266:LYS:HG2	2.54	0.43
1:B:1455:GLU:HA	1:B:1455:GLU:OE1	2.19	0.43
1:A:1518:TRP:CZ2	1:A:1584:TYR:HB3	2.54	0.42
1:B:1221:ASN:HD21	1:B:1223:LEU:HB3	1.83	0.42
1:A:1144:ILE:HD11	1:A:1149:LEU:CB	2.47	0.42
1:B:557:ILE:CD1	1:B:589:LEU:HD13	2.48	0.42
1:B:671:LYS:O	1:B:674:GLU:HG2	2.19	0.42
1:B:910:ILE:HA	1:B:915:ALA:CB	2.49	0.42
1:B:1103:LEU:O	1:B:1107:LYS:HG3	2.19	0.42

*Continued on next page...*

*Continued from previous page...*

Atom-1	Atom-2	Interatomic distance (Å)	Clash overlap (Å)
1:B:1291:LYS:N	1:B:1294:ARG:HH21	2.17	0.42
1:A:639:THR:HG22	1:A:640:VAL:N	2.34	0.42
1:A:883:TYR:O	1:A:887:ILE:HG13	2.20	0.42
1:A:1440:TRP:HE3	1:A:1453:MET:CE	2.32	0.42
1:A:1539:LEU:HD23	1:A:1572:PHE:CD2	2.54	0.42
1:B:1153:LEU:HD12	1:B:1253:TYR:CD2	2.54	0.42
1:B:1416:ARG:HH22	1:B:1452:GLN:CD	2.24	0.42
1:A:539:PHE:HZ	1:A:567:LEU:HD21	1.84	0.42
1:A:1309:LEU:N	1:A:1309:LEU:HD12	2.34	0.42
1:A:1469:LYS:HB2	1:A:1469:LYS:HE3	1.67	0.42
1:A:1570:VAL:HB	1:A:1587:GLU:O	2.20	0.42
1:B:781:ILE:HG13	1:B:781:ILE:H	1.61	0.42
1:B:860:LYS:CA	1:B:863:ARG:HH21	2.32	0.42
1:B:1146:VAL:O	1:B:1149:LEU:HB3	2.20	0.42
1:A:414:ILE:HD11	1:A:534:MET:HE2	2.01	0.42
1:A:755:ARG:HH11	1:A:755:ARG:HG2	1.84	0.42
1:A:1191:THR:HG22	1:A:1192:TYR:N	2.34	0.42
1:A:1482:PHE:HB3	1:A:1527:LEU:HD11	2.02	0.42
1:B:446:SER:HA	1:B:450:GLY:CA	2.34	0.42
1:B:619:LEU:HD13	1:B:619:LEU:HA	1.94	0.42
1:B:643:LYS:HB2	1:B:644:LYS:H	1.63	0.42
1:A:786:MET:O	1:A:788:ARG:HG3	2.20	0.42
1:A:1134:TRP:CE3	1:A:1135:ILE:HD13	2.55	0.42
1:B:684:TYR:HB3	1:B:882:PHE:HB3	2.02	0.42
1:B:837:ARG:CZ	1:B:929:PRO:HB2	2.49	0.42
1:A:452:VAL:HG22	1:A:491:TRP:NE1	2.34	0.42
1:A:539:PHE:CZ	1:A:567:LEU:HD21	2.55	0.42
1:A:594:LEU:HD12	1:A:595:ILE:CD1	2.50	0.42
1:A:1018:PHE:CE1	1:A:1031:MET:HG3	2.55	0.42
1:A:1253:TYR:O	1:A:1254:ILE:C	2.63	0.42
1:B:679:LYS:HA	1:B:679:LYS:CE	2.47	0.42
1:B:736:TYR:N	1:B:736:TYR:CD1	2.87	0.42
1:A:781:ILE:HD11	1:A:830:VAL:CG2	2.50	0.42
1:A:789:GLN:HE21	1:A:824:ARG:HB2	1.84	0.42
1:A:1171:GLU:O	1:A:1173:ARG:HD3	2.19	0.42
1:B:1388:PHE:CZ	1:B:1406:LYS:HD3	2.51	0.42
1:B:1512:TRP:HA	1:B:1517:VAL:CG2	2.49	0.42
1:A:730:THR:HA	1:A:830:VAL:O	2.20	0.41
1:A:1190:ASP:CB	1:A:1473:ARG:HH22	2.32	0.41
1:A:1359:ILE:HG23	1:A:1398:ILE:CG2	2.50	0.41
1:B:570:MET:HE1	1:B:601:ILE:N	2.35	0.41

*Continued on next page...*

*Continued from previous page...*

Atom-1	Atom-2	Interatomic distance (Å)	Clash overlap (Å)
1:B:664:LEU:CD2	1:B:667:LYS:HB2	2.36	0.41
1:B:1331:ARG:HG2	1:B:1331:ARG:HH11	1.85	0.41
1:B:1399:GLN:NE2	1:B:1402:SER:HB2	2.35	0.41
1:A:726:LYS:HD2	1:A:727:PRO:HD2	2.01	0.41
1:A:1520:GLU:O	1:A:1524:GLN:HG3	2.20	0.41
1:B:711:TYR:CE1	1:B:750:ILE:HD13	2.55	0.41
1:B:1216:PHE:CE1	1:B:1247:LYS:HE2	2.55	0.41
1:A:522:ARG:NH1	1:A:558:GLU:OE2	2.53	0.41
1:B:1432:TYR:HB2	1:B:1460:LEU:CD1	2.49	0.41
1:A:497:ARG:NH2	1:A:499:ASP:OD2	2.49	0.41
1:A:923:LEU:HA	1:A:993:LEU:HD11	2.02	0.41
1:B:513:TRP:CH2	1:B:555:PRO:HB3	2.55	0.41
1:B:894:LYS:HA	1:B:894:LYS:HD3	1.85	0.41
1:B:1293:ARG:NH1	1:B:1379:LYS:HG2	2.35	0.41
1:A:1355:GLN:OE1	1:A:1398:ILE:HG22	2.20	0.41
1:A:708:ARG:NH1	1:A:888:MET:HE1	2.35	0.41
1:A:710:LYS:HE3	1:A:852:ALA:O	2.20	0.41
1:A:843:LYS:O	1:A:846:ARG:HG3	2.20	0.41
1:B:818:ILE:HG13	1:B:819:ALA:N	2.36	0.41
1:B:891:ASN:O	1:B:891:ASN:CG	2.62	0.41
1:B:1420:GLN:HG2	1:B:1421:PRO:N	2.34	0.41
1:A:495:ASN:O	1:A:507:PRO:HA	2.21	0.41
1:A:630:ARG:HB3	1:A:656:CYS:SG	2.60	0.41
1:A:707:LYS:HE3	1:A:707:LYS:HB3	1.84	0.41
1:A:1259:LYS:HB3	1:A:1259:LYS:HE3	1.60	0.41
1:A:1344:PHE:HD1	1:A:1390:LEU:HD22	1.81	0.41
1:B:810:LEU:O	1:B:814:ILE:HG13	2.20	0.41
1:B:1086:GLN:NE2	1:B:1122:THR:OG1	2.53	0.41
1:A:1283:ASN:O	1:A:1283:ASN:CG	2.62	0.41
1:B:1096:LYS:O	1:B:1097:LYS:HB2	2.21	0.41
1:B:1203:VAL:O	1:B:1207:THR:OG1	2.36	0.41
1:A:554:ASP:OD1	1:A:555:PRO:HD2	2.21	0.41
1:A:1014:GLU:OE2	1:A:1015:ASN:N	2.54	0.41
1:A:1353:LYS:HG2	1:A:1354:SER:N	2.36	0.41
1:A:1441:PRO:HD3	1:A:1453:MET:HG2	2.02	0.41
1:B:442:PHE:O	1:B:444:PRO:HD3	2.20	0.41
1:B:464:HIS:CE1	1:B:483:LEU:HD23	2.56	0.41
1:B:920:PHE:O	1:B:924:LEU:HD23	2.20	0.41
1:B:1123:LEU:O	1:B:1123:LEU:HD12	2.20	0.41
1:B:1225:LYS:HB3	1:B:1225:LYS:HE2	1.81	0.41
1:B:1332:CYS:O	1:B:1336:LEU:HG	2.20	0.41

*Continued on next page...*

*Continued from previous page...*

Atom-1	Atom-2	Interatomic distance (Å)	Clash overlap (Å)
1:A:470:VAL:HG23	1:A:471:GLU:N	2.36	0.41
1:A:1308:CYS:CA	1:A:1334:ARG:HD3	2.49	0.41
1:A:1396:SER:CA	1:A:1405:VAL:HG21	2.51	0.41
1:B:805:ASP:OD1	1:B:805:ASP:O	2.39	0.41
1:B:955:LYS:HD2	1:B:955:LYS:HA	1.97	0.41
1:B:991:PHE:HA	1:B:994:GLU:CD	2.46	0.41
1:B:1108:GLN:CA	1:B:1111:ILE:HD12	2.29	0.41
1:B:1488:ARG:HG3	1:B:1488:ARG:HH11	1.85	0.41
1:A:930:ASP:OD1	1:A:930:ASP:C	2.63	0.40
1:A:1465:LYS:HD3	1:A:1465:LYS:C	2.45	0.40
1:B:649:MET:SD	1:B:776:GLN:HB3	2.61	0.40
1:B:736:TYR:CB	1:B:841:PRO:HB3	2.50	0.40
1:B:1250:LEU:O	1:B:1251:LYS:C	2.64	0.40
1:A:1424:LEU:HD13	1:A:1455:GLU:HB3	2.02	0.40
1:A:1498:ILE:N	1:A:1498:ILE:CD1	2.84	0.40
1:A:1539:LEU:CD1	1:A:1561:LEU:HD22	2.52	0.40
1:B:936:SER:O	1:B:940:LYS:HG2	2.20	0.40
1:A:631:LEU:HD12	1:A:658:ASN:HD22	1.86	0.40
1:A:656:CYS:O	1:A:659:GLU:HB2	2.20	0.40
1:A:1351:LEU:HD22	1:A:1494:HIS:HB2	2.03	0.40
1:A:1392:ASN:HD22	1:A:1392:ASN:H	1.69	0.40
1:B:445:GLU:HG2	1:B:445:GLU:H	1.66	0.40
1:B:983:ILE:HG21	1:B:988:ILE:HG22	2.03	0.40
1:B:1300:PHE:O	1:B:1300:PHE:HD1	2.03	0.40
1:B:390:GLU:HB2	1:B:609:LEU:HG	2.02	0.40
1:B:781:ILE:HG12	1:B:794:VAL:HG21	2.03	0.40
1:B:890:THR:O	1:B:891:ASN:C	2.64	0.40
1:B:1167:GLN:NE2	1:B:1197:TYR:HA	2.36	0.40
1:A:629:LYS:HE2	1:A:629:LYS:HB3	1.76	0.40
1:B:538:LYS:HD2	1:B:538:LYS:HA	1.89	0.40
1:B:802:GLU:H	1:B:802:GLU:HG3	1.64	0.40
1:B:888:MET:HG2	1:B:892:PHE:HE1	1.86	0.40
1:B:1363:LYS:HG2	1:B:1404:LEU:HD12	2.02	0.40

There are no symmetry-related clashes.



## 5.3 Torsion angles

### 5.3.1 Protein backbone

In the following table, the Percentiles column shows the percent Ramachandran outliers of the chain as a percentile score with respect to all PDB entries followed by that with respect to all EM entries.

The Analysed column shows the number of residues for which the backbone conformation was analysed, and the total number of residues.

Mol	Chain	Analysed	Favoured	Allowed	Outliers	Percentiles	
1	A	1095/1450 (76%)	1066 (97%)	29 (3%)	0	100	100
1	B	1011/1450 (70%)	979 (97%)	32 (3%)	0	100	100
All	All	2106/2900 (73%)	2045 (97%)	61 (3%)	0	100	100

There are no Ramachandran outliers to report.

### 5.3.2 Protein sidechains

In the following table, the Percentiles column shows the percent sidechain outliers of the chain as a percentile score with respect to all PDB entries followed by that with respect to all EM entries.

The Analysed column shows the number of residues for which the sidechain conformation was analysed, and the total number of residues.

Mol	Chain	Analysed	Rotameric	Outliers	Percentiles	
1	A	1018/1322 (77%)	992 (97%)	26 (3%)	40	69
1	B	956/1322 (72%)	924 (97%)	32 (3%)	33	64
All	All	1974/2644 (75%)	1916 (97%)	58 (3%)	38	67

All (58) residues with a non-rotameric sidechain are listed below:

Mol	Chain	Res	Type
1	A	417	THR
1	A	460	VAL
1	A	471	GLU
1	A	491	TRP
1	A	570	MET
1	A	698	SER
1	A	744	THR
1	A	801	PHE

*Continued on next page...*



*Continued from previous page...*

Mol	Chain	Res	Type
1	A	804	GLN
1	A	805	ASP
1	A	847	ILE
1	A	853	VAL
1	A	992	SER
1	A	1022	MET
1	A	1037	THR
1	A	1074	SER
1	A	1075	ILE
1	A	1138	ASN
1	A	1144	ILE
1	A	1147	ASP
1	A	1254	ILE
1	A	1282	ASN
1	A	1373	LEU
1	A	1405	VAL
1	A	1426	TYR
1	A	1516	ASP
1	B	427	HIS
1	B	428	LEU
1	B	457	GLU
1	B	509	ASP
1	B	570	MET
1	B	584	GLN
1	B	618	ILE
1	B	621	LEU
1	B	664	LEU
1	B	689	VAL
1	B	719	GLN
1	B	741	CYS
1	B	767	THR
1	B	836	MET
1	B	936	SER
1	B	970	THR
1	B	984	ILE
1	B	996	LEU
1	B	1036	LEU
1	B	1055	ILE
1	B	1072	LEU
1	B	1075	ILE
1	B	1121	ASP
1	B	1146	VAL

*Continued on next page...*

*Continued from previous page...*

Mol	Chain	Res	Type
1	B	1194	ILE
1	B	1254	ILE
1	B	1258	THR
1	B	1306	ILE
1	B	1357	ASP
1	B	1420	GLN
1	B	1517	VAL
1	B	1578	ILE

Sometimes sidechains can be flipped to improve hydrogen bonding and reduce clashes. All (19) such sidechains are listed below:

Mol	Chain	Res	Type
1	A	615	ASN
1	A	658	ASN
1	A	787	ASN
1	A	789	GLN
1	A	804	GLN
1	A	1108	GLN
1	A	1138	ASN
1	A	1143	ASN
1	A	1168	GLN
1	A	1212	GLN
1	A	1355	GLN
1	A	1536	ASN
1	B	488	GLN
1	B	579	HIS
1	B	925	ASN
1	B	1221	ASN
1	B	1381	GLN
1	B	1399	GLN
1	B	1500	GLN

### 5.3.3 RNA ⓘ

There are no RNA molecules in this entry.

## 5.4 Non-standard residues in protein, DNA, RNA chains ⓘ

There are no non-standard protein/DNA/RNA residues in this entry.

## 5.5 Carbohydrates [i](#)

There are no oligosaccharides in this entry.

## 5.6 Ligand geometry [i](#)

Of 4 ligands modelled in this entry, 2 are monoatomic - leaving 2 for Mogul analysis.

In the following table, the Counts columns list the number of bonds (or angles) for which Mogul statistics could be retrieved, the number of bonds (or angles) that are observed in the model and the number of bonds (or angles) that are defined in the Chemical Component Dictionary. The Link column lists molecule types, if any, to which the group is linked. The Z score for a bond length (or angle) is the number of standard deviations the observed value is removed from the expected value. A bond length (or angle) with  $|Z| > 2$  is considered an outlier worth inspection. RMSZ is the root-mean-square of all Z scores of the bond lengths (or angles).

Mol	Type	Chain	Res	Link	Bond lengths			Bond angles		
					Counts	RMSZ	$\# Z  > 2$	Counts	RMSZ	$\# Z  > 2$
3	ATP	A	1602	2	32,33,33	0.52	0	48,52,52	0.79	3 (6%)
3	ATP	B	1601	2	32,33,33	0.35	0	48,52,52	0.33	0

In the following table, the Chirals column lists the number of chiral outliers, the number of chiral centers analysed, the number of these observed in the model and the number defined in the Chemical Component Dictionary. Similar counts are reported in the Torsion and Rings columns. '-' means no outliers of that kind were identified.

Mol	Type	Chain	Res	Link	Chirals	Torsions	Rings
3	ATP	A	1602	2	-	6/22/38/38	0/3/3/3
3	ATP	B	1601	2	-	4/22/38/38	0/3/3/3

There are no bond length outliers.

All (3) bond angle outliers are listed below:

Mol	Chain	Res	Type	Atoms	Z	Observed(°)	Ideal(°)
3	A	1602	ATP	O2'-C2'-C3'	-2.44	103.99	111.82
3	A	1602	ATP	O2'-C2'-C1'	-2.13	102.75	110.10
3	A	1602	ATP	O3'-C3'-C2'	-2.10	105.09	111.82

There are no chirality outliers.

All (10) torsion outliers are listed below:

Mol	Chain	Res	Type	Atoms
3	A	1602	ATP	PB-O3A-PA-O5'

*Continued on next page...*

*Continued from previous page...*

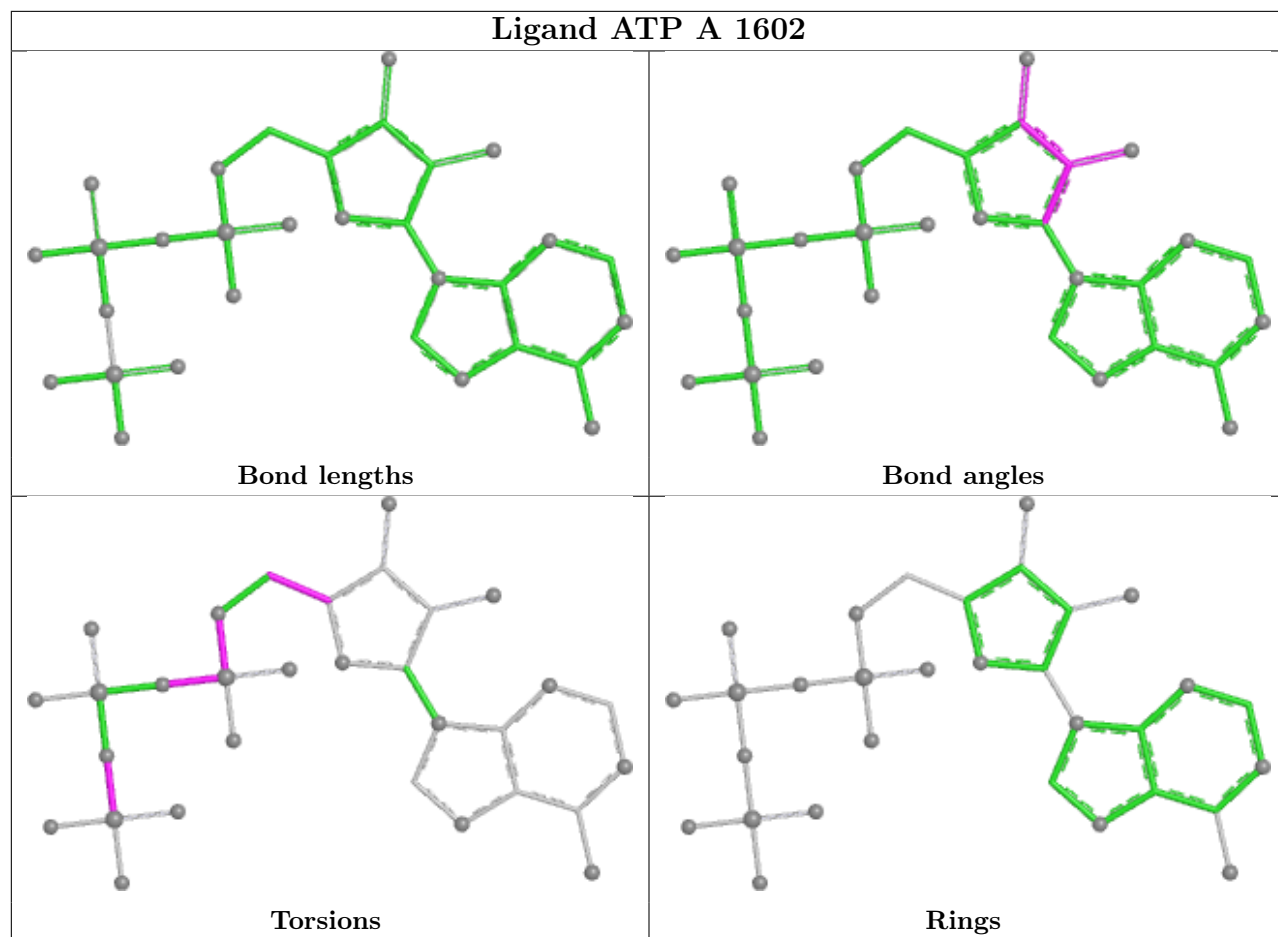
Mol	Chain	Res	Type	Atoms
3	A	1602	ATP	C5'-O5'-PA-O2A
3	B	1601	ATP	O4'-C4'-C5'-O5'
3	B	1601	ATP	C3'-C4'-C5'-O5'
3	A	1602	ATP	O4'-C4'-C5'-O5'
3	A	1602	ATP	C5'-O5'-PA-O1A
3	A	1602	ATP	C5'-O5'-PA-O3A
3	B	1601	ATP	PG-O3B-PB-O1B
3	A	1602	ATP	PB-O3B-PG-O3G
3	B	1601	ATP	PG-O3B-PB-O2B

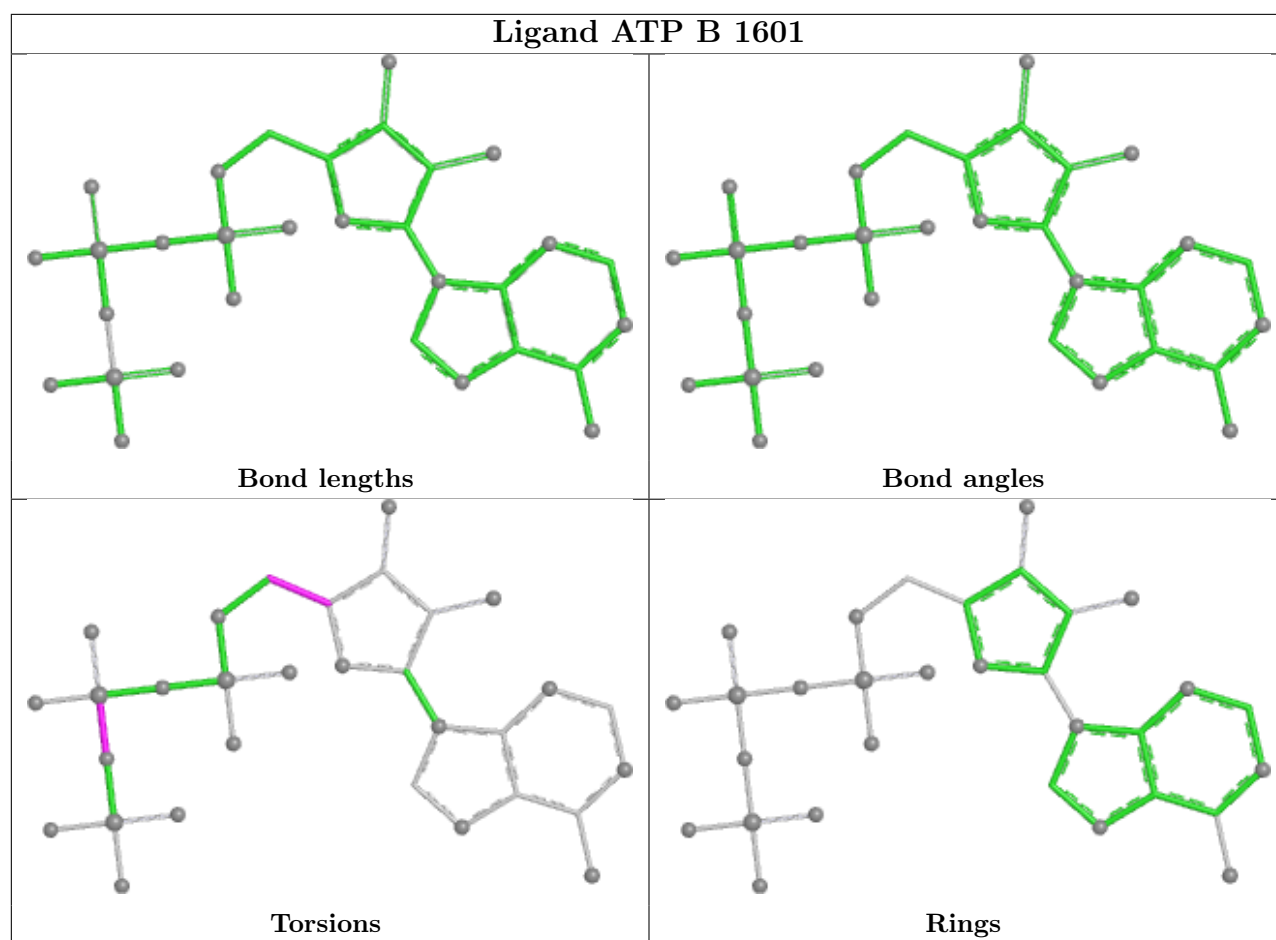
There are no ring outliers.

2 monomers are involved in 6 short contacts:

Mol	Chain	Res	Type	Clashes	Symm-Clashes
3	A	1602	ATP	2	0
3	B	1601	ATP	4	0

The following is a two-dimensional graphical depiction of Mogul quality analysis of bond lengths, bond angles, torsion angles, and ring geometry for all instances of the Ligand of Interest. In addition, ligands with molecular weight > 250 and outliers as shown on the validation Tables will also be included. For torsion angles, if less than 5% of the Mogul distribution of torsion angles is within 10 degrees of the torsion angle in question, then that torsion angle is considered an outlier. Any bond that is central to one or more torsion angles identified as an outlier by Mogul will be highlighted in the graph. For rings, the root-mean-square deviation (RMSD) between the ring in question and similar rings identified by Mogul is calculated over all ring torsion angles. If the average RMSD is greater than 60 degrees and the minimal RMSD between the ring in question and any Mogul-identified rings is also greater than 60 degrees, then that ring is considered an outlier. The outliers are highlighted in purple. The color gray indicates Mogul did not find sufficient equivalents in the CSD to analyse the geometry.





## 5.7 Other polymers [i](#)

There are no such residues in this entry.

## 5.8 Polymer linkage issues [i](#)

There are no chain breaks in this entry.

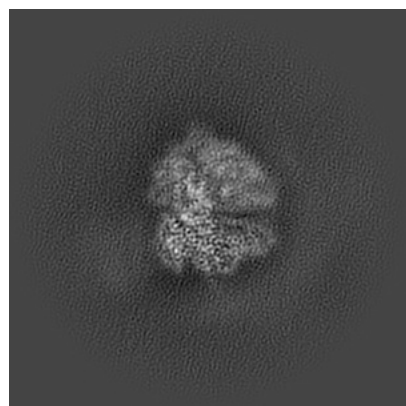
## 6 Map visualisation [i](#)

This section contains visualisations of the EMDB entry EMD-74340. These allow visual inspection of the internal detail of the map and identification of artifacts.

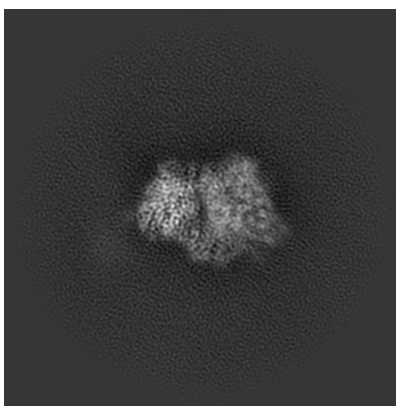
Images derived from a raw map, generated by summing the deposited half-maps, are presented below the corresponding image components of the primary map to allow further visual inspection and comparison with those of the primary map.

### 6.1 Orthogonal projections [i](#)

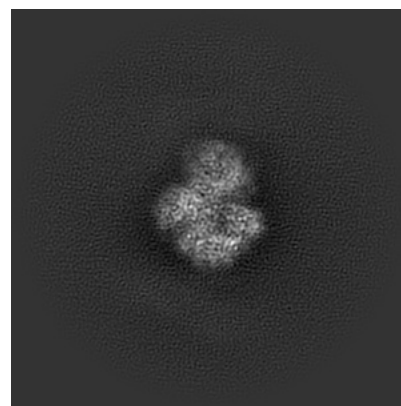
#### 6.1.1 Primary map



X

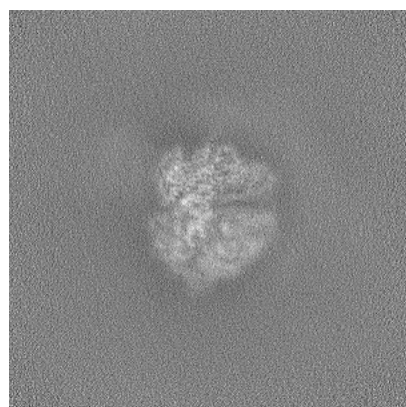


Y

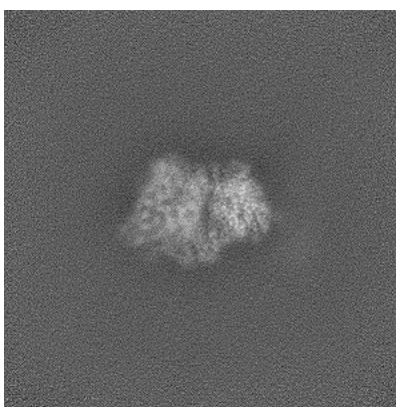


Z

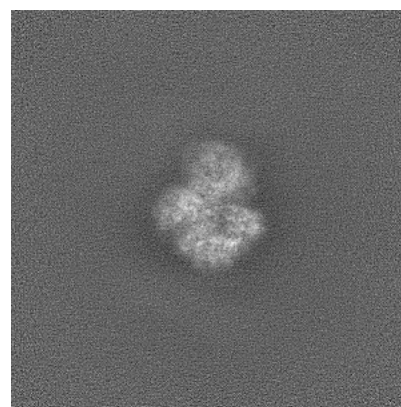
#### 6.1.2 Raw map



X



Y



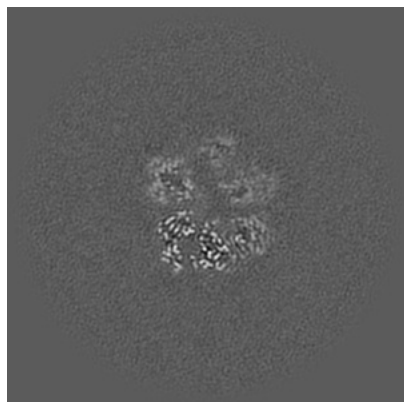
Z

The images above show the map projected in three orthogonal directions.

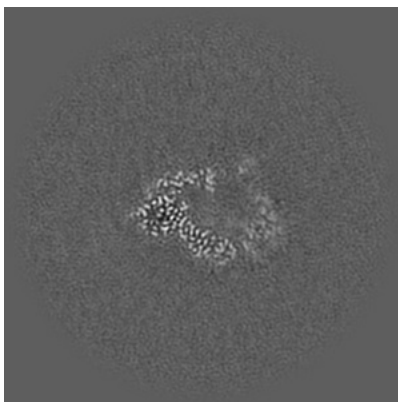


## 6.2 Central slices [i](#)

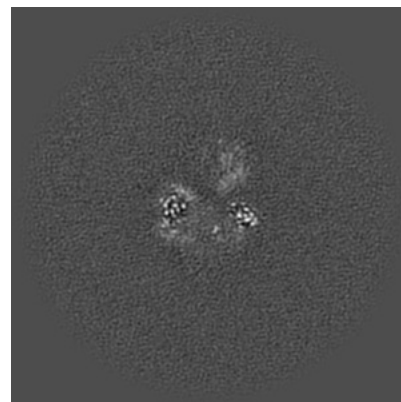
### 6.2.1 Primary map



X Index: 256

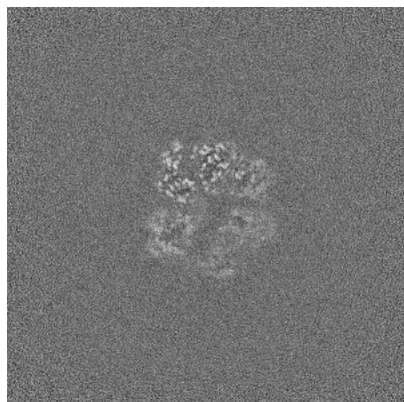


Y Index: 256

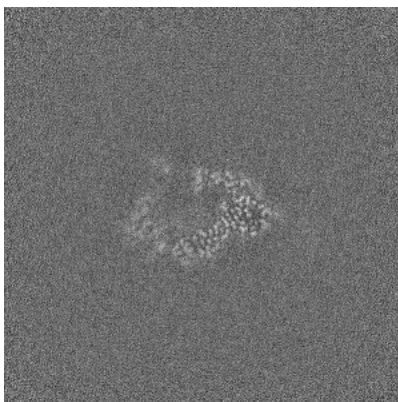


Z Index: 256

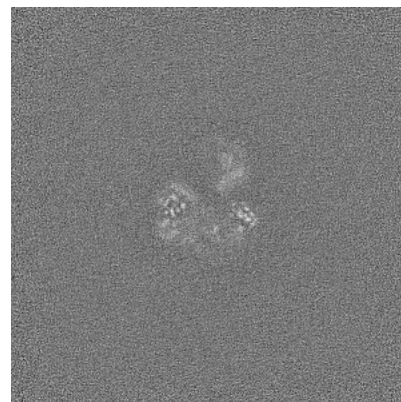
### 6.2.2 Raw map



X Index: 256



Y Index: 256



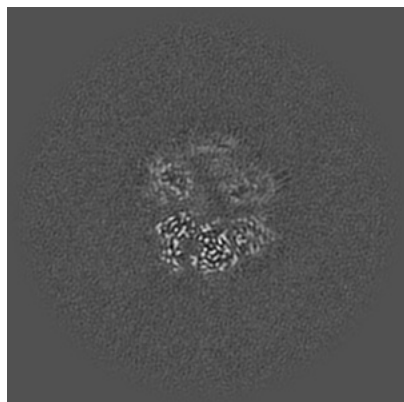
Z Index: 256

The images above show central slices of the map in three orthogonal directions.

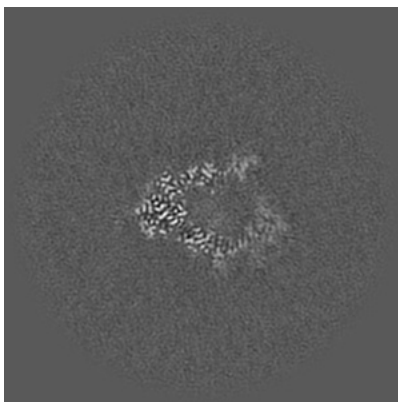


## 6.3 Largest variance slices [i](#)

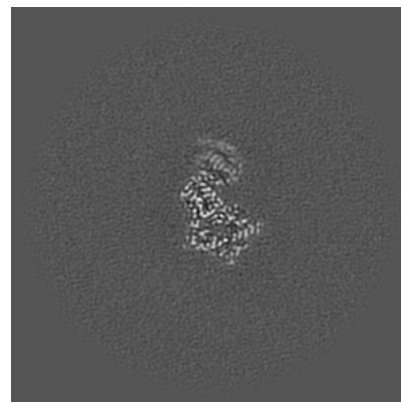
### 6.3.1 Primary map



X Index: 254

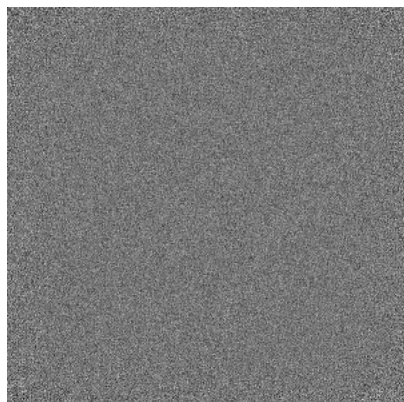


Y Index: 252

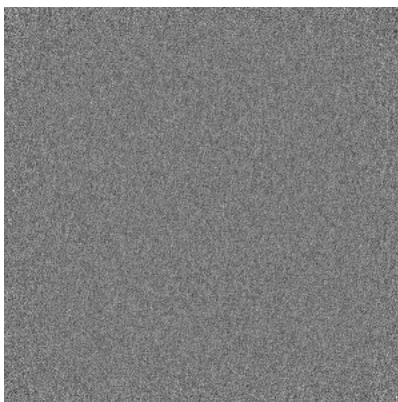


Z Index: 215

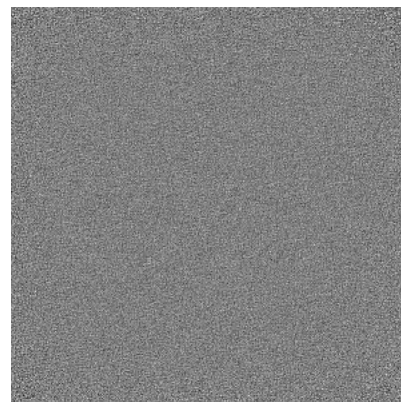
### 6.3.2 Raw map



X Index: 0



Y Index: 0

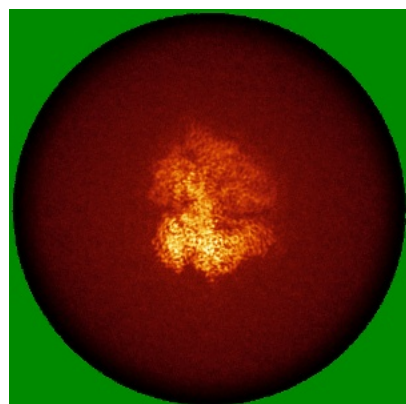


Z Index: 0

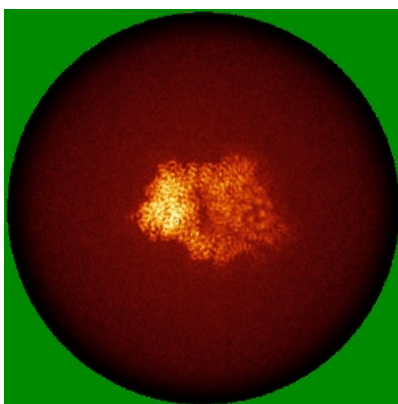
The images above show the largest variance slices of the map in three orthogonal directions.

## 6.4 Orthogonal standard-deviation projections (False-color) [i](#)

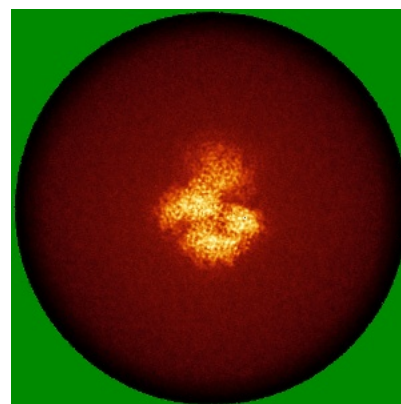
### 6.4.1 Primary map



X

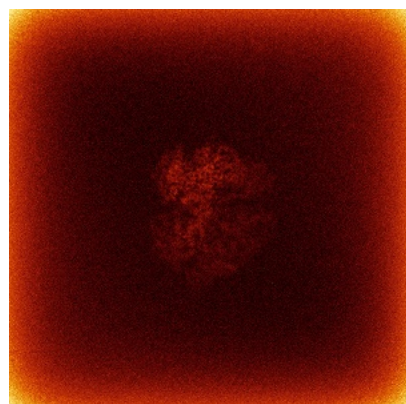


Y

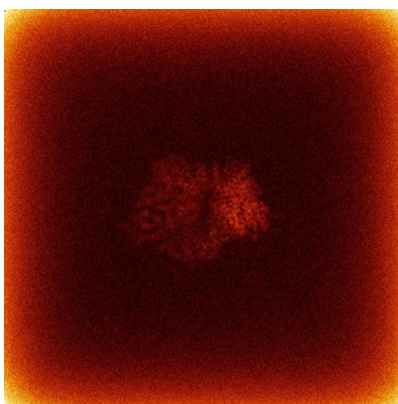


Z

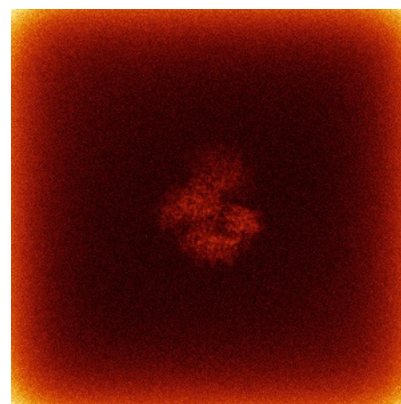
### 6.4.2 Raw map



X



Y

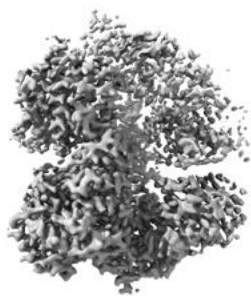


Z

The images above show the map standard deviation projections with false color in three orthogonal directions. Minimum values are shown in green, max in blue, and dark to light orange shades represent small to large values respectively.

## 6.5 Orthogonal surface views [i](#)

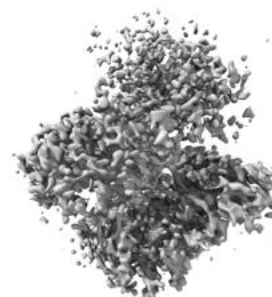
### 6.5.1 Primary map



X



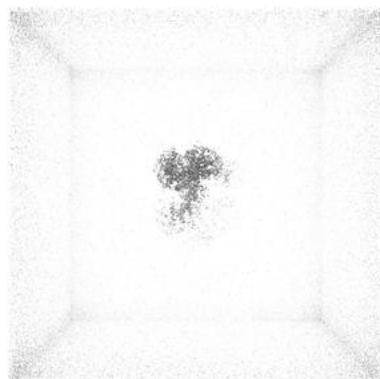
Y



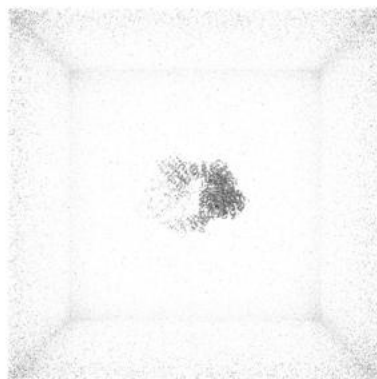
Z

The images above show the 3D surface view of the map at the recommended contour level 0.25. These images, in conjunction with the slice images, may facilitate assessment of whether an appropriate contour level has been provided.

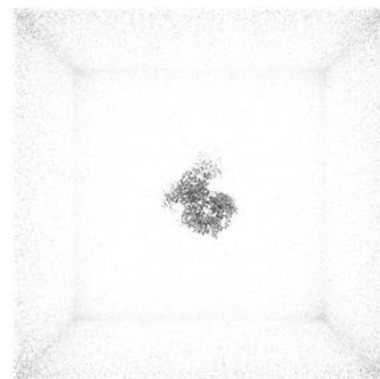
### 6.5.2 Raw map



X



Y



Z

These images show the 3D surface of the raw map. The raw map's contour level was selected so that its surface encloses the same volume as the primary map does at its recommended contour level.

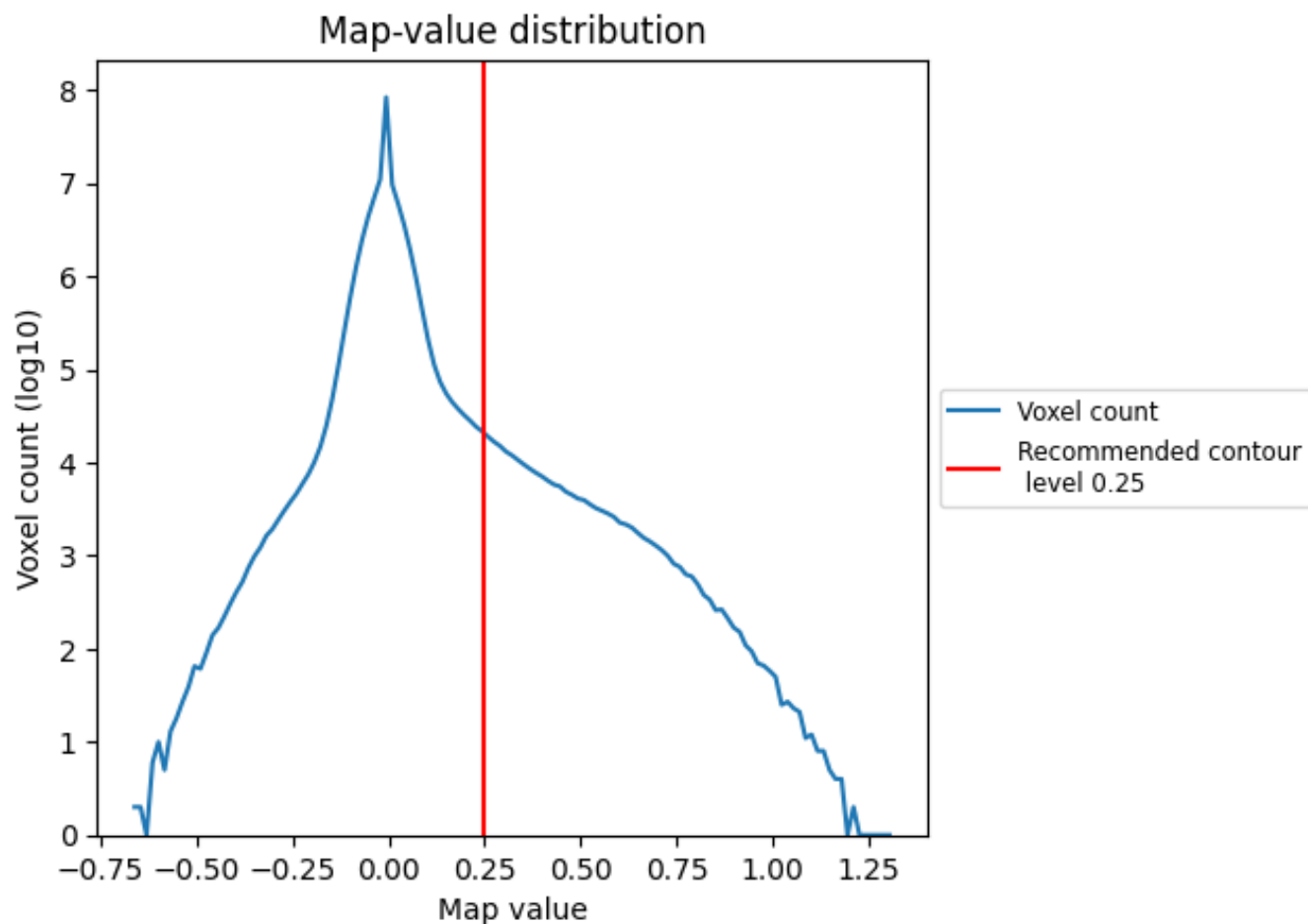
## 6.6 Mask visualisation [i](#)

This section was not generated. No masks/segmentation were deposited.

## 7 Map analysis [i](#)

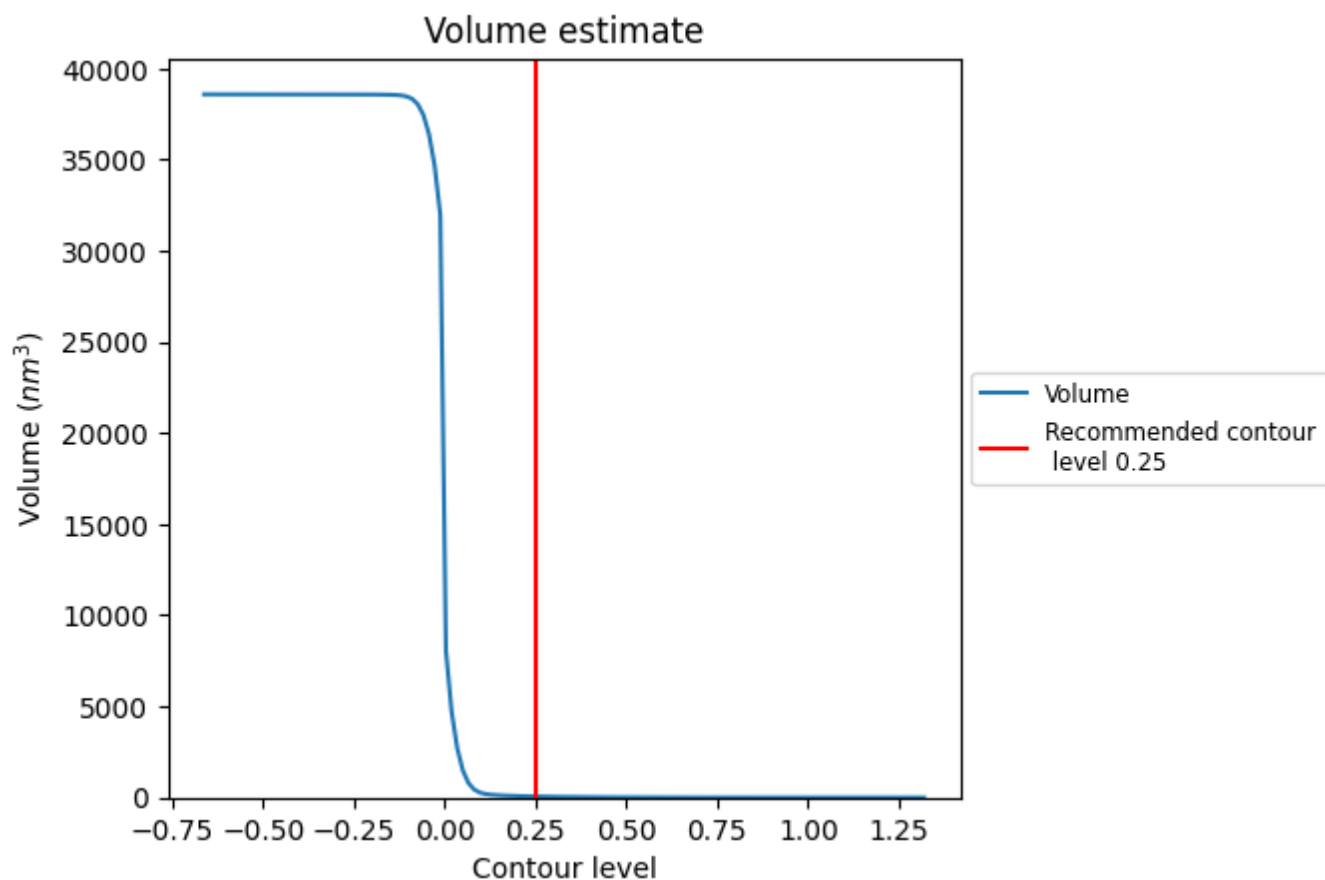
This section contains the results of statistical analysis of the map.

### 7.1 Map-value distribution [i](#)



The map-value distribution is plotted in 128 intervals along the x-axis. The y-axis is logarithmic. A spike in this graph at zero usually indicates that the volume has been masked.

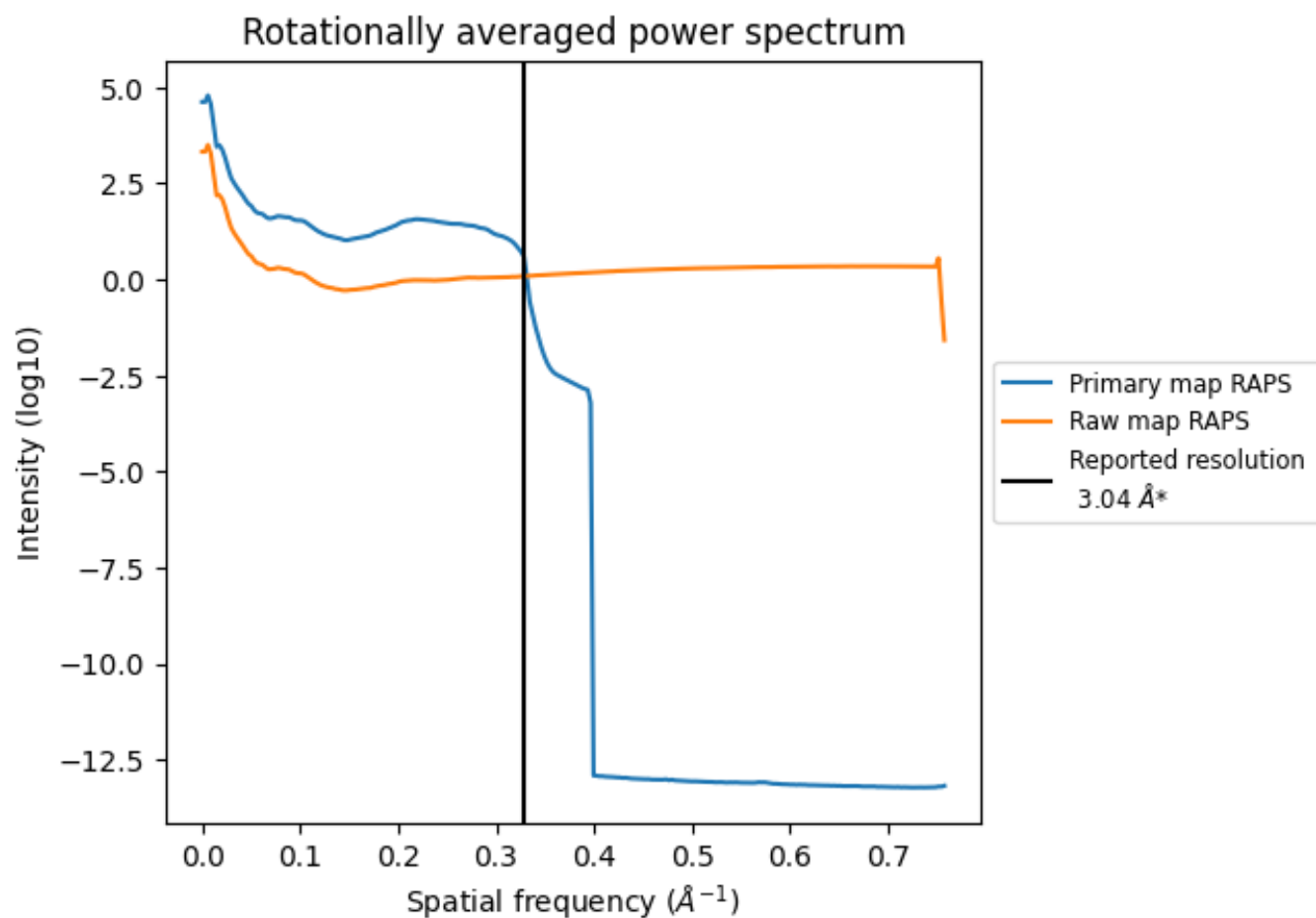
## 7.2 Volume estimate [i](#)



The volume at the recommended contour level is 58 nm<sup>3</sup>; this corresponds to an approximate mass of 52 kDa.

The volume estimate graph shows how the enclosed volume varies with the contour level. The recommended contour level is shown as a vertical line and the intersection between the line and the curve gives the volume of the enclosed surface at the given level.

### 7.3 Rotationally averaged power spectrum ⓘ



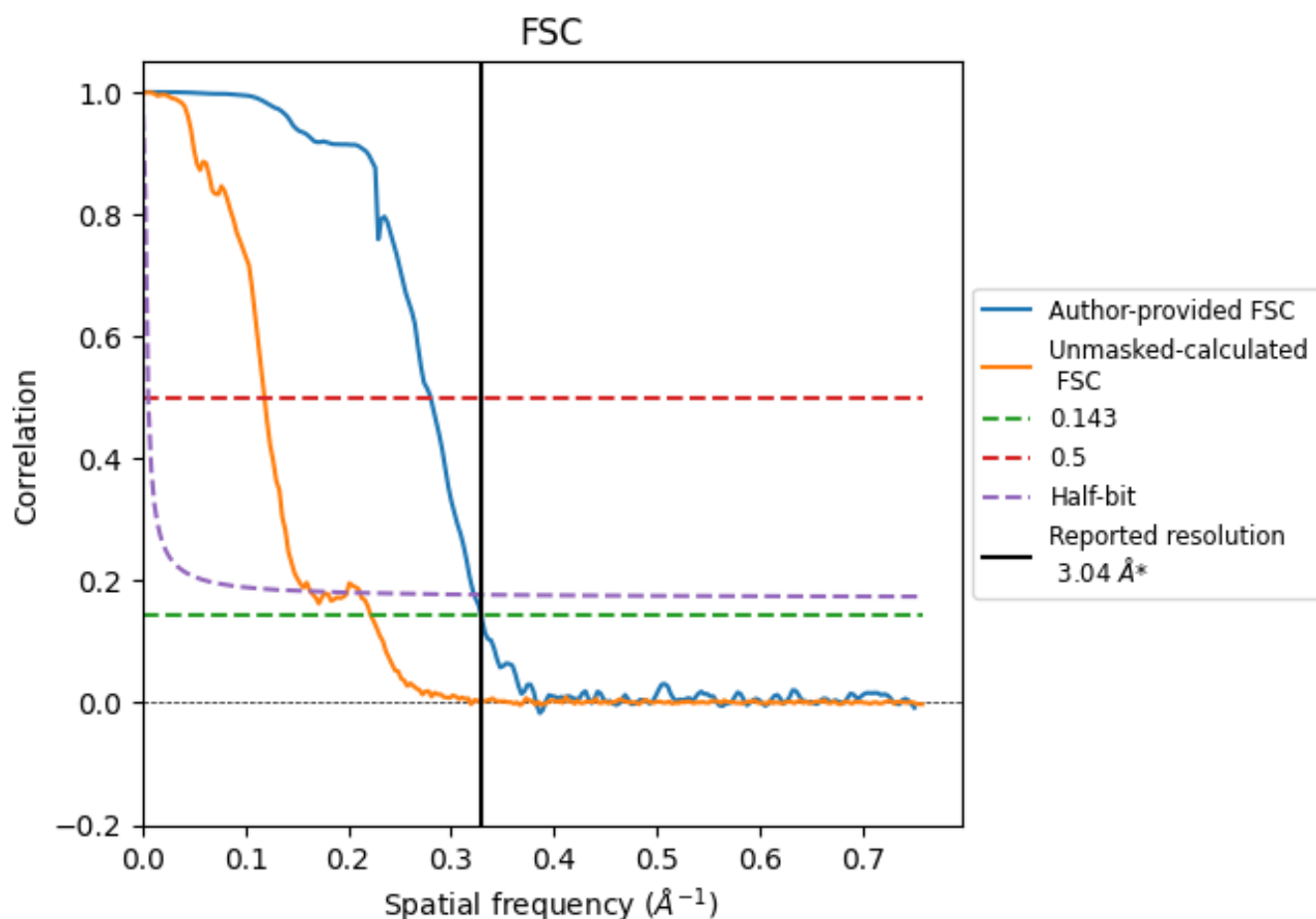
\*Reported resolution corresponds to spatial frequency of 0.329 Å<sup>-1</sup>



## 8 Fourier-Shell correlation [i](#)

Fourier-Shell Correlation (FSC) is the most commonly used method to estimate the resolution of single-particle and subtomogram-averaged maps. The shape of the curve depends on the imposed symmetry, mask and whether or not the two 3D reconstructions used were processed from a common reference. The reported resolution is shown as a black line. A curve is displayed for the half-bit criterion in addition to lines showing the 0.143 gold standard cut-off and 0.5 cut-off.

### 8.1 FSC [i](#)



\*Reported resolution corresponds to spatial frequency of 0.329  $\text{\AA}^{-1}$

## 8.2 Resolution estimates [i](#)

Resolution estimate (Å)	Estimation criterion (FSC cut-off)		
	0.143	0.5	Half-bit
Reported by author	3.04	-	-
Author-provided FSC curve	3.04	3.57	3.10
Unmasked-calculated*	4.50	8.42	6.12

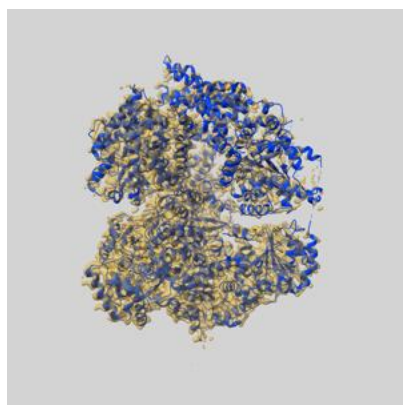
\*Resolution estimate based on FSC curve calculated by comparison of deposited half-maps. The value from deposited half-maps intersecting FSC 0.143 CUT-OFF 4.50 differs from the reported value 3.04 by more than 10 %



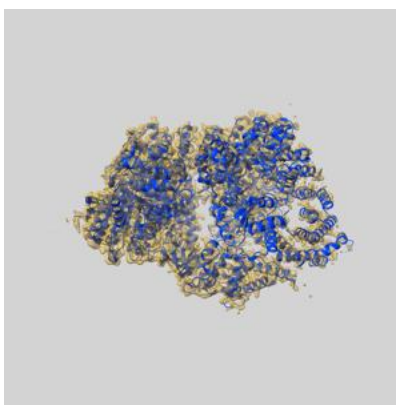
## 9 Map-model fit [i](#)

This section contains information regarding the fit between EMDB map EMD-74340 and PDB model 9ZJS. Per-residue inclusion information can be found in section 3 on page 5.

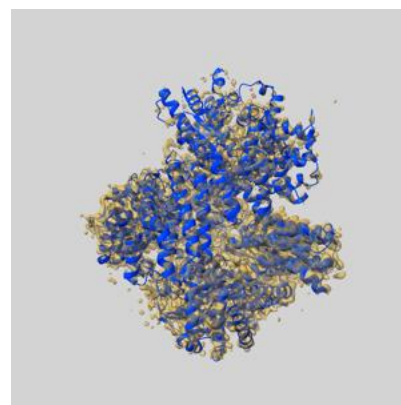
### 9.1 Map-model overlay [i](#)



X



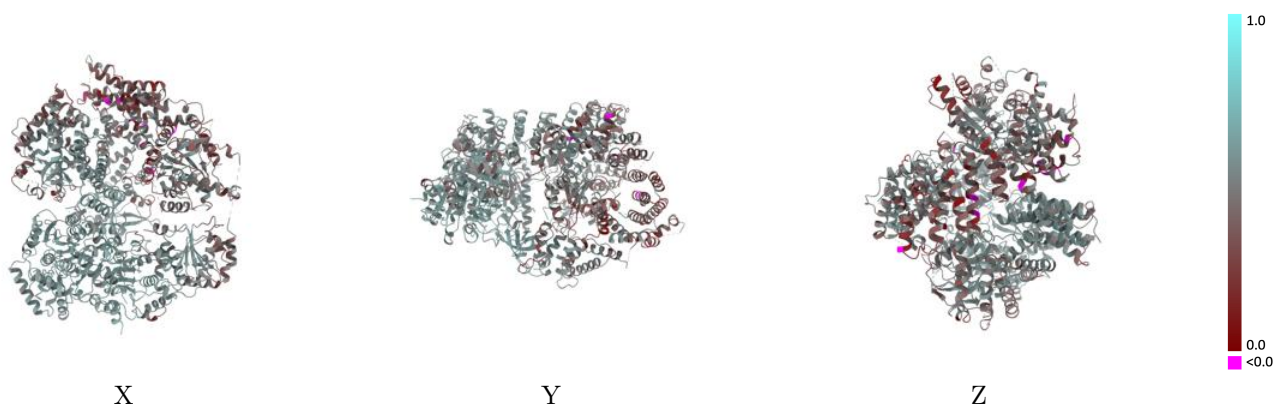
Y



Z

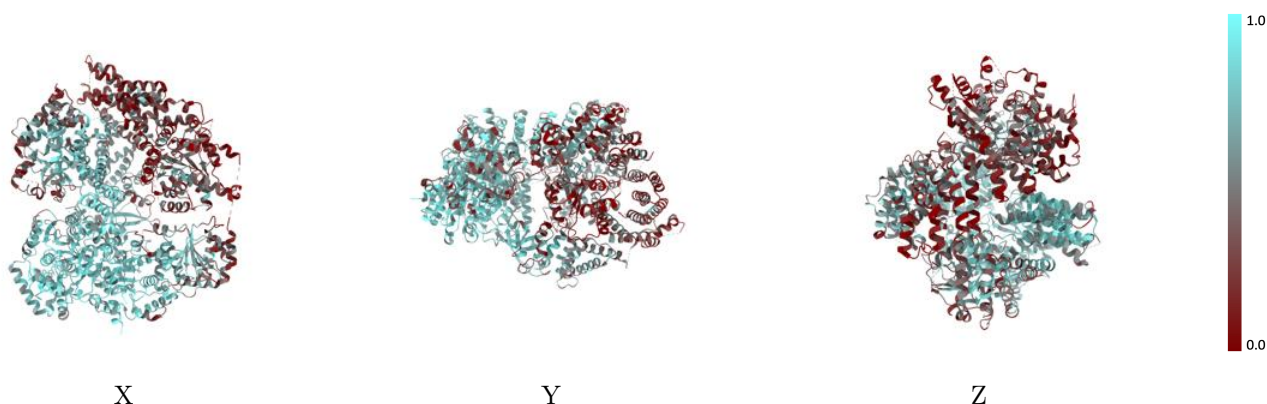
The images above show the 3D surface view of the map at the recommended contour level 0.25 at 50% transparency in yellow overlaid with a ribbon representation of the model coloured in blue. These images allow for the visual assessment of the quality of fit between the atomic model and the map.

## 9.2 Q-score mapped to coordinate model [i](#)



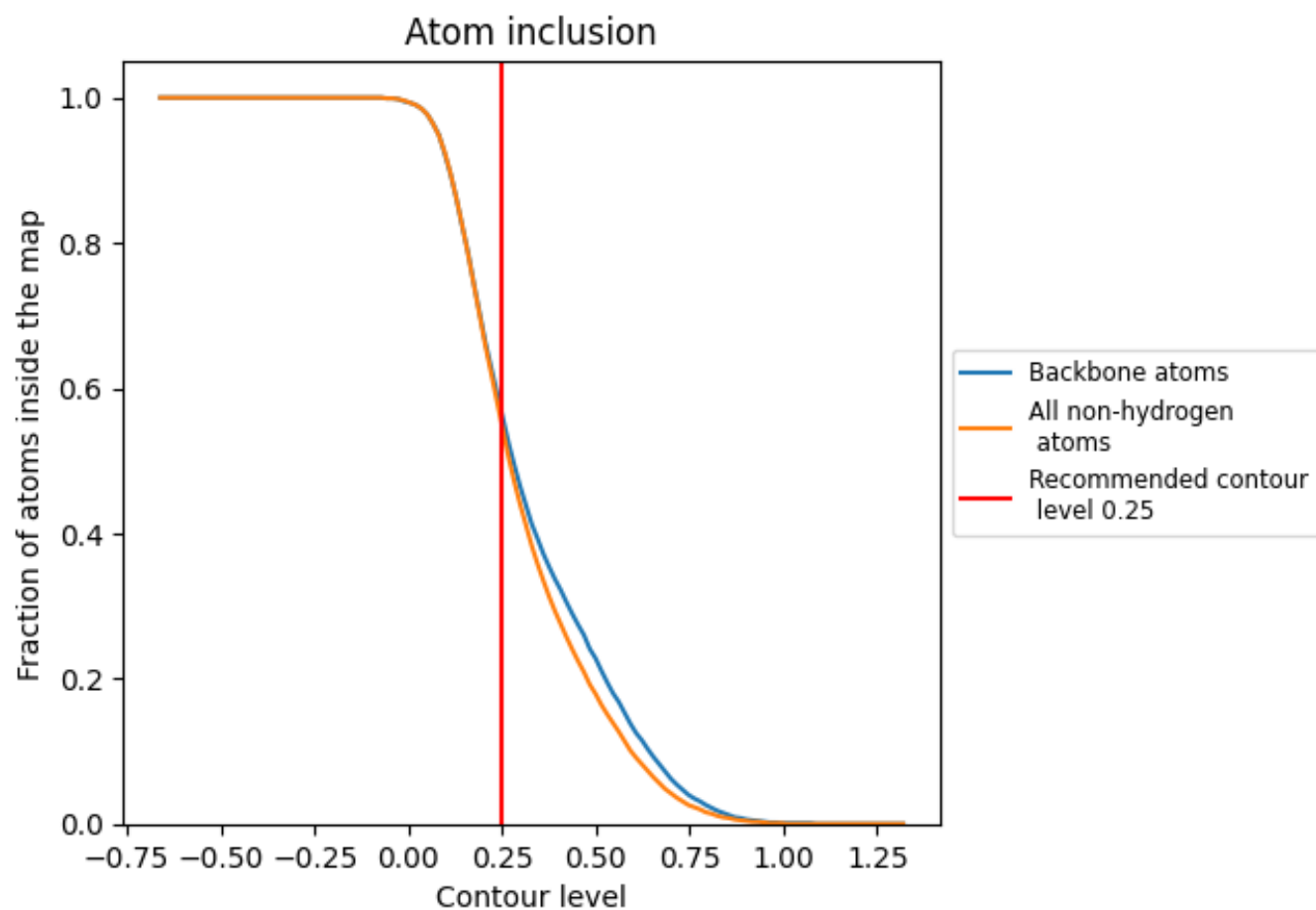
The images above show the model with each residue coloured according to its Q-score. This shows their resolvability in the map with higher Q-score values reflecting better resolvability. Please note: Q-score is calculating the resolvability of atoms, and thus high values are only expected at resolutions at which atoms can be resolved. Low Q-score values may therefore be expected for many entries.

## 9.3 Atom inclusion mapped to coordinate model [i](#)



The images above show the model with each residue coloured according to its atom inclusion. This shows to what extent they are inside the map at the recommended contour level (0.25).

## 9.4 Atom inclusion [i](#)



At the recommended contour level, 56% of all backbone atoms, 55% of all non-hydrogen atoms, are inside the map.

9.5 Map-model fit summary ⓘ

The table lists the average atom inclusion at the recommended contour level (0.25) and Q-score for the entire model and for each chain.

Chain	Atom inclusion	Q-score
All	<div></div> 0.5470	<div></div> 0.4920
A	<div></div> 0.7010	<div></div> 0.5410
B	<div></div> 0.3870	<div></div> 0.4400

