



## Full wwPDB EM Validation Report ⓘ

Apr 5, 2026 – 10:21 PM UTC

PDB ID : 9Z80 / pdb\_00009z80  
EMDB ID : EMD-73884  
Title : SARS-CoV-2 S2 in complex with polyclonal Fab\_Donor1  
Authors : Park, S.; Ward, A.B.  
Deposited on : 2025-11-18  
Resolution : 3.17 Å(reported)  
Based on initial model : 6XR8

This is a Full wwPDB EM Validation Report for a publicly released PDB entry.

We welcome your comments at [validation@mail.wwpdb.org](mailto:validation@mail.wwpdb.org)

A user guide is available at

<https://www.wwpdb.org/validation/2017/EMValidationReportHelp>  
with specific help available everywhere you see the ⓘ symbol.

The types of validation reports are described at

<http://www.wwpdb.org/validation/2017/FAQs#types>.

---

The following versions of software and data (see [references ⓘ](#)) were used in the production of this report:

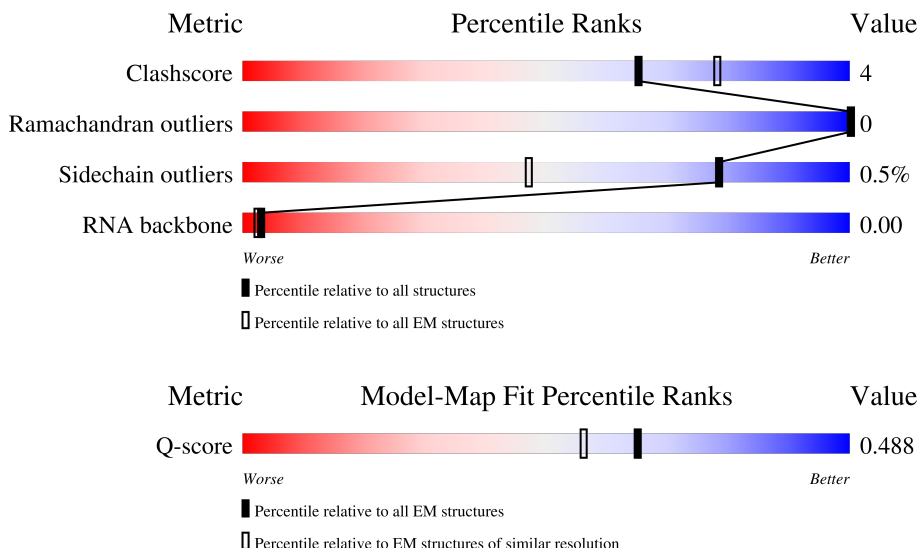
EMDB validation analysis : 0.0.1.dev132  
Mogul : 2022.3.0, CSD as543be (2022)  
MolProbity : 4-5-2 with Phenix2.0  
Percentile statistics : 20250101.v01 (using entries in the PDB archive January 1st 2025)  
EM percentile statistics : 202505.v01 (Using data in the EMDb archive up until May 2025)  
MapQ : 1.9.13  
Ideal geometry (proteins) : Engh & Huber (2001)  
Ideal geometry (DNA, RNA) : Parkinson et al. (1996)  
Validation Pipeline (wwPDB-VP) : 2.49

# 1 Overall quality at a glance i

The following experimental techniques were used to determine the structure:  
*ELECTRON MICROSCOPY*

The reported resolution of this entry is 3.17 Å.

Percentile scores (ranging between 0-100) for global validation metrics of the entry are shown in the following graphic. The table shows the number of entries on which the scores are based.



Metric	Whole archive (#Entries)	EM structures (#Entries)	Similar EM resolution (#Entries, resolution range(Å))
Clashscore	229148	23984	-
Ramachandran outliers	224038	23583	-
Sidechain outliers	223484	23102	-
RNA backbone	8273	3508	-
Q-score	-	25397	14465 ( 2.67 - 3.67 )

The table below summarises the geometric issues observed across the polymeric chains and their fit to the map. The red, orange, yellow and green segments of the bar indicate the fraction of residues that contain outliers for  $\geq 3$ , 2, 1 and 0 types of geometric quality criteria respectively. A grey segment represents the fraction of residues that are not modelled. The numeric value for each fraction is indicated below the corresponding segment, with a dot representing fractions  $\leq 5\%$ . The upper red bar (where present) indicates the fraction of residues that have poor fit to the EM map (all-atom inclusion  $< 40\%$ ). The numeric value is given above the bar.

Mol	Chain	Length	Quality of chain
1	A	119	
2	B	93	
3	C	474	

Continued on next page...

Continued from previous page...

Mol	Chain	Length	Quality of chain
3	D	474	<div><div>9%</div><div>75%</div><div>10%</div><div>15%</div></div>
3	E	474	<div><div>7%</div><div>77%</div><div>10%</div><div>13%</div></div>
4	F	2	<div><div>50%</div><div>100%</div></div>
4	G	2	<div><div>50%</div><div>100%</div></div>
4	H	2	<div><div>50%</div><div>50%</div></div>
4	I	2	<div><div>50%</div><div>100%</div></div>
4	J	2	<div><div>100%</div></div>
4	K	2	<div><div>100%</div><div>50%</div><div>50%</div></div>
4	L	2	<div><div>50%</div><div>100%</div></div>

## 2 Entry composition

There are 5 unique types of molecules in this entry. The entry contains 10854 atoms, of which 0 are hydrogens and 0 are deuteriums.

In the tables below, the AltConf column contains the number of residues with at least one atom in alternate conformation and the Trace column contains the number of residues modelled with at most 2 atoms.

- Molecule 1 is a RNA chain called Human polyclonal Fab model with polyalanine backbone - Heavy chain.

Mol	Chain	Residues	Atoms					AltConf	Trace
1	A	119	Total	C	N	O	S	0	0
			598	357	119	120	2		

- Molecule 2 is a RNA chain called Human polyclonal Fab model with polyalanine backbone - Light chain.

Mol	Chain	Residues	Atoms					AltConf	Trace
2	B	93	Total	C	N	O	S	0	0
			467	279	93	93	2		

- Molecule 3 is a protein called Spike protein S2.

Mol	Chain	Residues	Atoms					AltConf	Trace
3	C	416	Total	C	N	O	S	0	0
			3217	2049	540	609	19		
3	D	402	Total	C	N	O	S	0	0
			3112	1984	520	588	20		
3	E	413	Total	C	N	O	S	0	0
			3194	2032	534	608	20		

There are 66 discrepancies between the modelled and reference sequences:

Chain	Residue	Modelled	Actual	Comment	Reference
C	704	CYS	SER	engineered mutation	UNP P0DTC2
C	790	CYS	LYS	engineered mutation	UNP P0DTC2
C	880	CYS	GLY	engineered mutation	UNP P0DTC2
C	888	CYS	PHE	engineered mutation	UNP P0DTC2
C	892	PRO	ALA	engineered mutation	UNP P0DTC2
C	899	PRO	ALA	engineered mutation	UNP P0DTC2
C	942	PRO	ALA	engineered mutation	UNP P0DTC2
C	961	PHE	THR	engineered mutation	UNP P0DTC2
C	986	PRO	LYS	engineered mutation	UNP P0DTC2

*Continued on next page...*

*Continued from previous page...*

Chain	Residue	Modelled	Actual	Comment	Reference
C	987	PRO	VAL	engineered mutation	UNP P0DTC2
C	991	TRP	VAL	engineered mutation	UNP P0DTC2
C	998	TRP	THR	engineered mutation	UNP P0DTC2
C	1162	GLY	-	expression tag	UNP P0DTC2
C	1163	SER	-	expression tag	UNP P0DTC2
C	1164	HIS	-	expression tag	UNP P0DTC2
C	1165	HIS	-	expression tag	UNP P0DTC2
C	1166	HIS	-	expression tag	UNP P0DTC2
C	1167	HIS	-	expression tag	UNP P0DTC2
C	1168	HIS	-	expression tag	UNP P0DTC2
C	1169	HIS	-	expression tag	UNP P0DTC2
C	1170	HIS	-	expression tag	UNP P0DTC2
C	1171	HIS	-	expression tag	UNP P0DTC2
D	704	CYS	SER	engineered mutation	UNP P0DTC2
D	790	CYS	LYS	engineered mutation	UNP P0DTC2
D	880	CYS	GLY	engineered mutation	UNP P0DTC2
D	888	CYS	PHE	engineered mutation	UNP P0DTC2
D	892	PRO	ALA	engineered mutation	UNP P0DTC2
D	899	PRO	ALA	engineered mutation	UNP P0DTC2
D	942	PRO	ALA	engineered mutation	UNP P0DTC2
D	961	PHE	THR	engineered mutation	UNP P0DTC2
D	986	PRO	LYS	engineered mutation	UNP P0DTC2
D	987	PRO	VAL	engineered mutation	UNP P0DTC2
D	991	TRP	VAL	engineered mutation	UNP P0DTC2
D	998	TRP	THR	engineered mutation	UNP P0DTC2
D	1162	GLY	-	expression tag	UNP P0DTC2
D	1163	SER	-	expression tag	UNP P0DTC2
D	1164	HIS	-	expression tag	UNP P0DTC2
D	1165	HIS	-	expression tag	UNP P0DTC2
D	1166	HIS	-	expression tag	UNP P0DTC2
D	1167	HIS	-	expression tag	UNP P0DTC2
D	1168	HIS	-	expression tag	UNP P0DTC2
D	1169	HIS	-	expression tag	UNP P0DTC2
D	1170	HIS	-	expression tag	UNP P0DTC2
D	1171	HIS	-	expression tag	UNP P0DTC2
E	704	CYS	SER	engineered mutation	UNP P0DTC2
E	790	CYS	LYS	engineered mutation	UNP P0DTC2
E	880	CYS	GLY	engineered mutation	UNP P0DTC2
E	888	CYS	PHE	engineered mutation	UNP P0DTC2
E	892	PRO	ALA	engineered mutation	UNP P0DTC2
E	899	PRO	ALA	engineered mutation	UNP P0DTC2
E	942	PRO	ALA	engineered mutation	UNP P0DTC2

*Continued on next page...*

Continued from previous page...

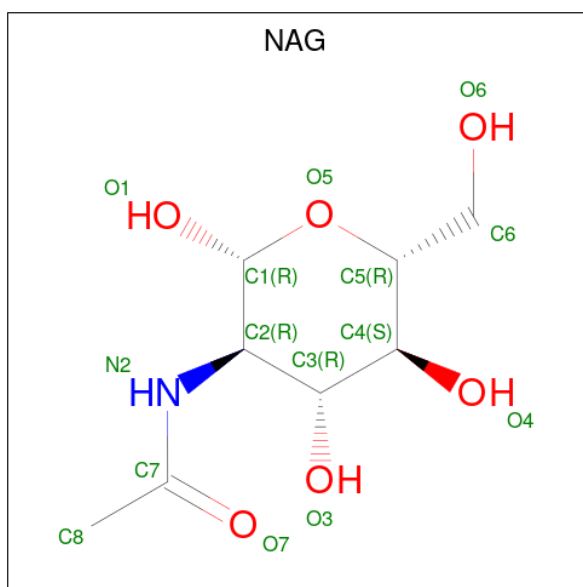
Chain	Residue	Modelled	Actual	Comment	Reference
E	961	PHE	THR	engineered mutation	UNP P0DTC2
E	986	PRO	LYS	engineered mutation	UNP P0DTC2
E	987	PRO	VAL	engineered mutation	UNP P0DTC2
E	991	TRP	VAL	engineered mutation	UNP P0DTC2
E	998	TRP	THR	engineered mutation	UNP P0DTC2
E	1162	GLY	-	expression tag	UNP P0DTC2
E	1163	SER	-	expression tag	UNP P0DTC2
E	1164	HIS	-	expression tag	UNP P0DTC2
E	1165	HIS	-	expression tag	UNP P0DTC2
E	1166	HIS	-	expression tag	UNP P0DTC2
E	1167	HIS	-	expression tag	UNP P0DTC2
E	1168	HIS	-	expression tag	UNP P0DTC2
E	1169	HIS	-	expression tag	UNP P0DTC2
E	1170	HIS	-	expression tag	UNP P0DTC2
E	1171	HIS	-	expression tag	UNP P0DTC2

- Molecule 4 is an oligosaccharide called 2-acetamido-2-deoxy-beta-D-glucopyranose-(1-4)-2-acetamido-2-deoxy-beta-D-glucopyranose.



Mol	Chain	Residues	Atoms				AltConf	Trace
4	F	2	Total	C	N	O	0	0
			28	16	2	10		
4	G	2	Total	C	N	O	0	0
			28	16	2	10		
4	H	2	Total	C	N	O	0	0
			28	16	2	10		
4	I	2	Total	C	N	O	0	0
			28	16	2	10		
4	J	2	Total	C	N	O	0	0
			28	16	2	10		
4	K	2	Total	C	N	O	0	0
			28	16	2	10		
4	L	2	Total	C	N	O	0	0
			28	16	2	10		

- Molecule 5 is 2-acetamido-2-deoxy-beta-D-glucopyranose (CCD ID: NAG) (formula: C<sub>8</sub>H<sub>15</sub>NO<sub>6</sub>).

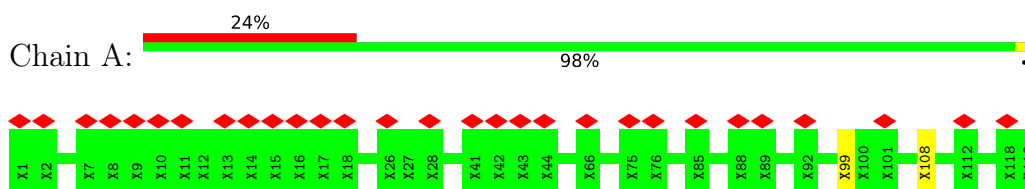


Mol	Chain	Residues	Atoms				AltConf
5	C	1	Total	C	N	O	0
			14	8	1	5	
5	C	1	Total	C	N	O	0
			14	8	1	5	
5	C	1	Total	C	N	O	0
			14	8	1	5	
5	D	1	Total	C	N	O	0
			14	8	1	5	
5	E	1	Total	C	N	O	0
			14	8	1	5	

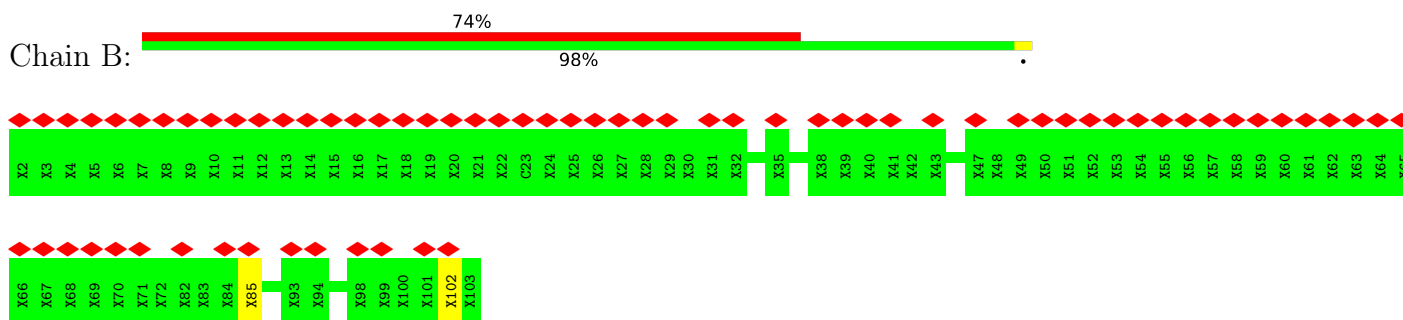
### 3 Residue-property plots

These plots are drawn for all protein, RNA, DNA and oligosaccharide chains in the entry. The first graphic for a chain summarises the proportions of the various outlier classes displayed in the second graphic. The second graphic shows the sequence view annotated by issues in geometry and atom inclusion in map density. Residues are color-coded according to the number of geometric quality criteria for which they contain at least one outlier: green = 0, yellow = 1, orange = 2 and red = 3 or more. A red diamond above a residue indicates a poor fit to the EM map for this residue (all-atom inclusion < 40%). Stretches of 2 or more consecutive residues without any outlier are shown as a green connector. Residues present in the sample, but not in the model, are shown in grey.

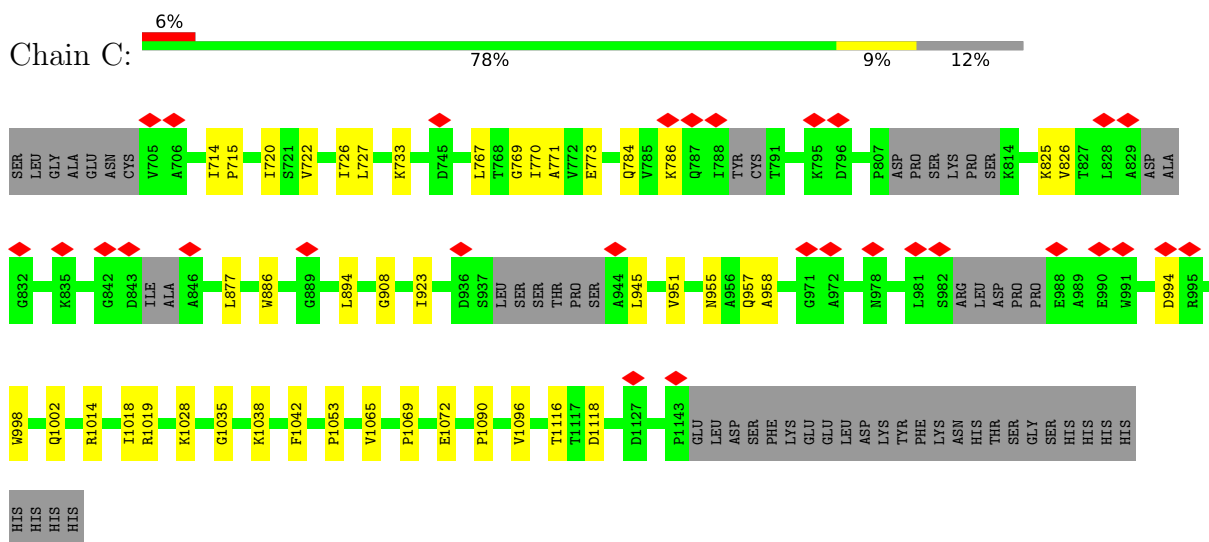
- Molecule 1: Human polyclonal Fab model with polyalanine backbone - Heavy chain



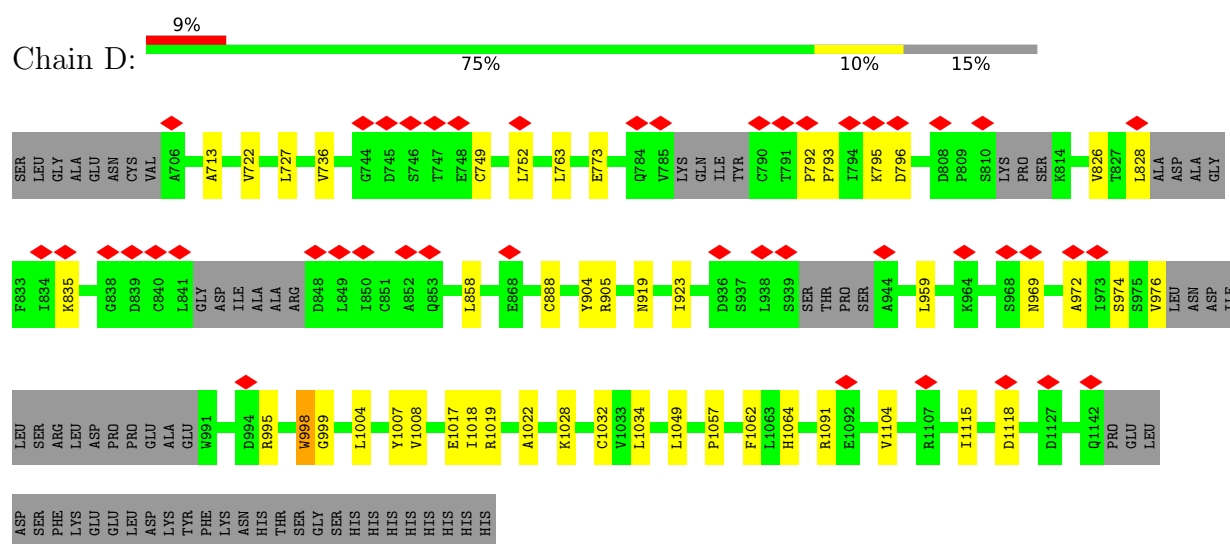
- Molecule 2: Human polyclonal Fab model with polyalanine backbone - Light chain



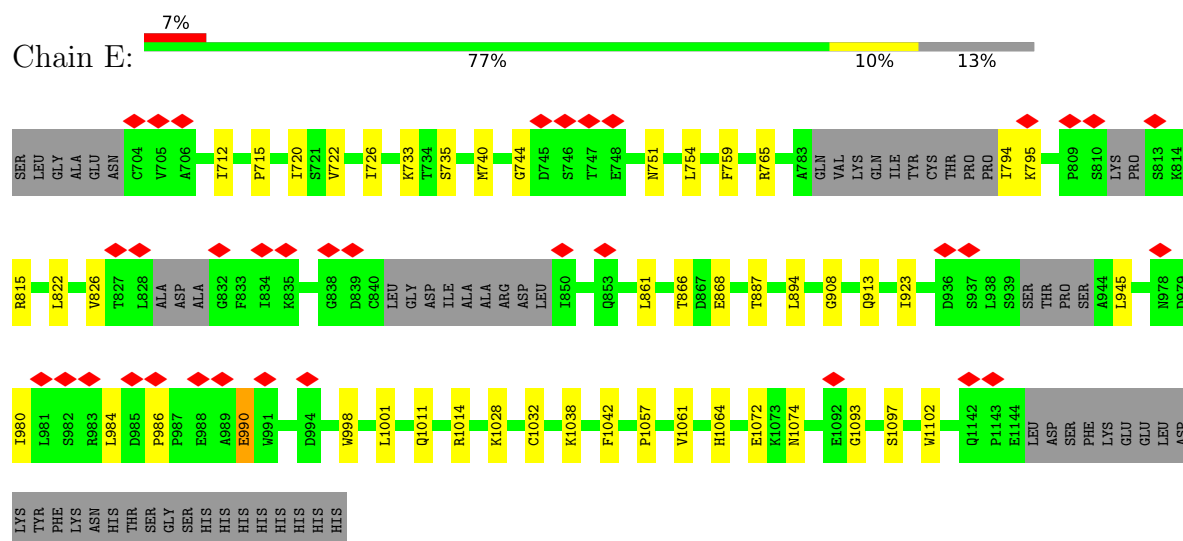
- Molecule 3: Spike protein S2



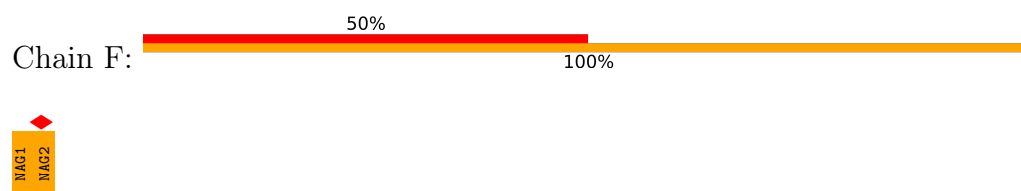
- Molecule 3: Spike protein S2



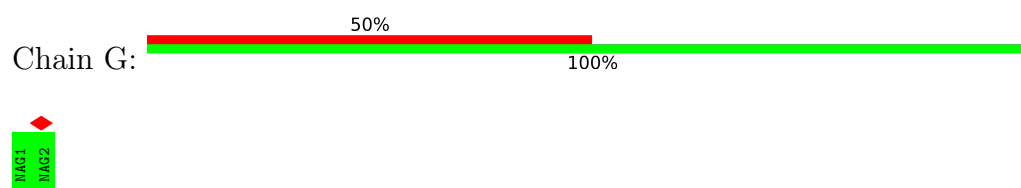
• Molecule 3: Spike protein S2



• Molecule 4: 2-acetamido-2-deoxy-beta-D-glucopyranose-(1-4)-2-acetamido-2-deoxy-beta-D-glucopyranose



• Molecule 4: 2-acetamido-2-deoxy-beta-D-glucopyranose-(1-4)-2-acetamido-2-deoxy-beta-D-glucopyranose



- Molecule 4: 2-acetamido-2-deoxy-beta-D-glucopyranose-(1-4)-2-acetamido-2-deoxy-beta-D-glucopyranose

Chain H: 



- Molecule 4: 2-acetamido-2-deoxy-beta-D-glucopyranose-(1-4)-2-acetamido-2-deoxy-beta-D-glucopyranose

Chain I: 



- Molecule 4: 2-acetamido-2-deoxy-beta-D-glucopyranose-(1-4)-2-acetamido-2-deoxy-beta-D-glucopyranose

Chain J: 



- Molecule 4: 2-acetamido-2-deoxy-beta-D-glucopyranose-(1-4)-2-acetamido-2-deoxy-beta-D-glucopyranose

Chain K: 



- Molecule 4: 2-acetamido-2-deoxy-beta-D-glucopyranose-(1-4)-2-acetamido-2-deoxy-beta-D-glucopyranose

Chain L: 



## 4 Experimental information

Property	Value	Source
EM reconstruction method	SINGLE PARTICLE	Depositor
Imposed symmetry	POINT, C1	Depositor
Number of particles used	35264	Depositor
Resolution determination method	FSC 0.143 CUT-OFF	Depositor
CTF correction method	PHASE FLIPPING AND AMPLITUDE CORRECTION	Depositor
Microscope	TFS GLACIOS	Depositor
Voltage (kV)	200	Depositor
Electron dose ( $e^-/\text{\AA}^2$ )	45	Depositor
Minimum defocus (nm)	800	Depositor
Maximum defocus (nm)	1800	Depositor
Magnification	190000	Depositor
Image detector	TFS FALCON 4i (4k x 4k)	Depositor
Maximum map value	0.885	Depositor
Minimum map value	-0.560	Depositor
Average map value	0.000	Depositor
Map value standard deviation	0.012	Depositor
Recommended contour level	0.15	Depositor
Map size (Å)	344.63998, 344.63998, 344.63998	wwPDB
Map dimensions	480, 480, 480	wwPDB
Map angles (°)	90.0, 90.0, 90.0	wwPDB
Pixel spacing (Å)	0.718, 0.718, 0.718	Depositor

## 5 Model quality [i](#)

### 5.1 Standard geometry [i](#)

Bond lengths and bond angles in the following residue types are not validated in this section: NAG

The Z score for a bond length (or angle) is the number of standard deviations the observed value is removed from the expected value. A bond length (or angle) with  $|Z| > 5$  is considered an outlier worth inspection. RMSZ is the root-mean-square of all Z scores of the bond lengths (or angles).

Mol	Chain	Bond lengths		Bond angles	
		RMSZ	$\# Z  > 5$	RMSZ	$\# Z  > 5$
1	A	0.17	0/10	0.63	0/10
2	B	0.17	0/10	0.37	0/10
3	C	0.15	0/3278	0.34	0/4451
3	D	0.16	0/3173	0.38	0/4310
3	E	0.17	0/3257	0.38	0/4425
All	All	0.16	0/9728	0.37	0/13206

There are no bond length outliers.

There are no bond angle outliers.

There are no chirality outliers.

There are no planarity outliers.

### 5.2 Too-close contacts [i](#)

In the following table, the Non-H and H(model) columns list the number of non-hydrogen atoms and hydrogen atoms in the chain respectively. The H(added) column lists the number of hydrogen atoms added and optimized by MolProbity. The Clashes column lists the number of clashes within the asymmetric unit, whereas Symm-Clashes lists symmetry-related clashes.

Mol	Chain	Non-H	H(model)	H(added)	Clashes	Symm-Clashes
1	A	598	0	142	1	0
2	B	467	0	112	1	0
3	C	3217	0	3169	28	0
3	D	3112	0	3060	30	0
3	E	3194	0	3134	31	0
4	F	28	0	25	1	0
4	G	28	0	25	0	0
4	H	28	0	25	0	0

*Continued on next page...*

*Continued from previous page...*

Mol	Chain	Non-H	H(model)	H(added)	Clashes	Symm-Clashes
4	I	28	0	25	0	0
4	J	28	0	25	0	0
4	K	28	0	25	1	0
4	L	28	0	25	0	0
5	C	42	0	39	0	0
5	D	14	0	13	0	0
5	E	14	0	13	0	0
All	All	10854	0	9857	82	0

The all-atom clashscore is defined as the number of clashes found per 1000 atoms (including hydrogen atoms). The all-atom clashscore for this structure is 4.

All (82) close contacts within the same asymmetric unit are listed below, sorted by their clash magnitude.

Atom-1	Atom-2	Interatomic distance (Å)	Clash overlap (Å)
3:C:1028:LYS:NZ	3:C:1042:PHE:O	2.32	0.63
3:E:740:MET:HG3	3:E:744:GLY:HA2	1.80	0.63
3:E:887:THR:HG21	3:E:894:LEU:HD12	1.83	0.60
3:C:722:VAL:HG22	3:C:1065:VAL:HG22	1.85	0.59
3:D:904:TYR:OH	3:E:1093:GLY:O	2.21	0.57
3:E:1028:LYS:O	3:E:1032:CYS:HB2	2.04	0.57
3:D:969:ASN:ND2	3:D:972:ALA:O	2.38	0.57
3:E:908:GLY:O	3:E:1038:LYS:NZ	2.38	0.56
3:E:986:PRO:O	3:E:990:GLU:HB3	2.05	0.56
3:D:1091:ARG:NH1	3:D:1118:ASP:O	2.38	0.56
3:D:998:TRP:HE1	3:E:998:TRP:HD1	1.54	0.56
3:D:969:ASN:HB3	3:D:974:SER:HB2	1.89	0.55
3:D:1004:LEU:O	3:D:1007:TYR:HB3	2.07	0.55
3:C:1019:ARG:NH2	3:D:1017:GLU:OE2	2.40	0.55
3:C:720:ILE:HG13	3:C:923:ILE:HG23	1.88	0.55
3:C:767:LEU:HA	3:C:770:ILE:HD12	1.89	0.54
3:E:1028:LYS:NZ	3:E:1042:PHE:O	2.40	0.54
3:D:858:LEU:HD21	3:D:959:LEU:HD22	1.91	0.53
2:B:85:UNK:HA	2:B:102:UNK:HA	1.91	0.53
3:C:1090:PRO:O	3:E:913:GLN:NE2	2.42	0.52
3:E:722:VAL:HA	3:E:1064:HIS:O	2.10	0.52
3:E:726:ILE:HG12	3:E:1061:VAL:HG22	1.92	0.52
3:C:958:ALA:HB2	3:C:1014:ARG:HH12	1.75	0.52
3:D:1028:LYS:NZ	3:D:1032:CYS:SG	2.84	0.51
3:C:957:GLN:OE1	3:E:765:ARG:NH2	2.43	0.51
3:E:815:ARG:NH1	3:E:868:GLU:OE2	2.45	0.50

*Continued on next page...*

*Continued from previous page...*

Atom-1	Atom-2	Interatomic distance (Å)	Clash overlap (Å)
3:C:715:PRO:HA	3:C:1072:GLU:HA	1.94	0.49
3:E:715:PRO:HA	3:E:1072:GLU:HA	1.95	0.49
3:E:822:LEU:HD22	3:E:945:LEU:HD21	1.95	0.49
3:C:727:LEU:HD11	3:C:1028:LYS:HD2	1.95	0.48
3:D:736:VAL:HG11	3:D:1004:LEU:HD21	1.95	0.48
3:D:1018:ILE:O	3:D:1022:ALA:N	2.47	0.48
3:E:1011:GLN:OE1	3:E:1014:ARG:NH1	2.46	0.48
1:A:99:UNK:HA	1:A:108:UNK:HA	1.96	0.48
3:C:894:LEU:HA	3:D:713:ALA:HB3	1.95	0.48
3:C:826:VAL:HG23	3:C:945:LEU:HD23	1.95	0.48
3:D:1104:VAL:HG23	3:D:1115:ILE:HG12	1.96	0.47
3:C:715:PRO:HG3	3:C:1069:PRO:HB3	1.95	0.47
4:F:1:NAG:H4	4:F:2:NAG:H2	1.73	0.46
3:E:733:LYS:HE2	3:E:733:LYS:HB3	1.81	0.46
3:E:740:MET:HE3	3:E:740:MET:HB2	1.76	0.46
3:D:722:VAL:HA	3:D:1064:HIS:O	2.16	0.46
3:D:749:CYS:HA	3:D:752:LEU:HD12	1.96	0.46
3:D:888:CYS:HB2	3:D:1034:LEU:HD22	1.96	0.46
3:E:759:PHE:HB3	3:E:1001:LEU:HD11	1.98	0.46
3:E:751:ASN:O	3:E:754:LEU:HB2	2.16	0.46
3:C:994:ASP:OD1	3:D:995:ARG:NH1	2.49	0.46
3:E:794:ILE:HG23	3:E:795:LYS:HG3	1.98	0.46
3:D:828:LEU:HD13	3:D:835:LYS:HB2	1.97	0.45
3:E:712:ILE:O	3:E:1074:ASN:HA	2.17	0.45
3:C:877:LEU:HD22	3:C:1053:PRO:HG3	1.99	0.45
3:C:784:GLN:HB3	3:C:786:LYS:HE2	1.99	0.45
3:C:886:TRP:HB3	3:C:1035:GLY:HA2	1.99	0.45
3:D:773:GLU:OE1	3:D:1019:ARG:NH1	2.50	0.45
3:E:795:LYS:HE2	4:K:1:NAG:H83	1.99	0.44
3:D:826:VAL:HB	3:D:1057:PRO:HG2	1.98	0.44
3:E:735:SER:HB2	3:E:861:LEU:HD11	2.00	0.43
3:C:908:GLY:O	3:C:1038:LYS:NZ	2.51	0.43
3:C:726:ILE:HD13	3:C:945:LEU:HA	1.99	0.43
3:C:769:GLY:O	3:C:773:GLU:HG2	2.19	0.43
3:D:905:ARG:NH1	3:D:1049:LEU:O	2.47	0.43
3:C:998:TRP:HB2	3:D:995:ARG:HH12	1.84	0.42
3:D:736:VAL:HG22	3:D:858:LEU:HD13	2.00	0.42
3:C:951:VAL:O	3:C:955:ASN:ND2	2.49	0.42
3:D:995:ARG:O	3:D:999:GLY:N	2.52	0.42
3:E:980:ILE:HG23	3:E:984:LEU:HD12	2.01	0.41
3:D:763:LEU:HD22	3:D:1008:VAL:HG21	2.02	0.41

*Continued on next page...*

Continued from previous page...

Atom-1	Atom-2	Interatomic distance (Å)	Clash overlap (Å)
3:E:726:ILE:HD13	3:E:945:LEU:HD23	2.02	0.41
3:E:1097:SER:HB2	3:E:1102:TRP:CD2	2.56	0.41
3:C:1002:GLN:HG3	3:E:998:TRP:HZ2	1.85	0.41
3:C:1116:THR:HG22	3:C:1118:ASP:H	1.85	0.41
3:E:720:ILE:HG13	3:E:923:ILE:HG23	2.01	0.41
3:D:793:PRO:HB2	3:D:796:ASP:HB2	2.02	0.41
3:C:714:ILE:HD11	3:C:1096:VAL:HG11	2.03	0.41
3:D:727:LEU:HD12	3:D:1062:PHE:HE2	1.86	0.41
3:E:826:VAL:HB	3:E:1057:PRO:HG2	2.02	0.41
3:D:919:ASN:O	3:D:923:ILE:HG12	2.21	0.41
3:C:733:LYS:HD2	3:C:771:ALA:HB1	2.03	0.40
3:C:715:PRO:HD3	3:E:894:LEU:HD13	2.04	0.40
3:D:792:PRO:HA	3:D:793:PRO:HD3	1.92	0.40
3:C:825:LYS:HB2	3:C:945:LEU:HD22	2.04	0.40
3:D:795:LYS:HD2	3:D:795:LYS:HA	1.97	0.40

There are no symmetry-related clashes.

## 5.3 Torsion angles

### 5.3.1 Protein backbone

In the following table, the Percentiles column shows the percent Ramachandran outliers of the chain as a percentile score with respect to all PDB entries followed by that with respect to all EM entries.

The Analysed column shows the number of residues for which the backbone conformation was analysed, and the total number of residues.

Mol	Chain	Analysed	Favoured	Allowed	Outliers	Percentiles	
3	C	402/474 (85%)	397 (99%)	5 (1%)	0	100	100
3	D	388/474 (82%)	374 (96%)	14 (4%)	0	100	100
3	E	401/474 (85%)	390 (97%)	11 (3%)	0	100	100
All	All	1191/1422 (84%)	1161 (98%)	30 (2%)	0	100	100

There are no Ramachandran outliers to report.

### 5.3.2 Protein sidechains ⓘ

In the following table, the Percentiles column shows the percent sidechain outliers of the chain as a percentile score with respect to all PDB entries followed by that with respect to all EM entries.

The Analysed column shows the number of residues for which the sidechain conformation was analysed, and the total number of residues.

Mol	Chain	Analysed	Rotameric	Outliers	Percentiles	
3	C	357/410 (87%)	356 (100%)	1 (0%)	86	86
3	D	348/410 (85%)	346 (99%)	2 (1%)	78	82
3	E	357/410 (87%)	355 (99%)	2 (1%)	78	82
All	All	1062/1230 (86%)	1057 (100%)	5 (0%)	78	83

All (5) residues with a non-rotameric sidechain are listed below:

Mol	Chain	Res	Type
3	C	1018	ILE
3	D	976	VAL
3	D	998	TRP
3	E	866	THR
3	E	990	GLU

Sometimes sidechains can be flipped to improve hydrogen bonding and reduce clashes. All (7) such sidechains are listed below:

Mol	Chain	Res	Type
3	C	895	GLN
3	C	1023	ASN
3	D	762	GLN
3	E	853	GLN
3	E	957	GLN
3	E	992	GLN
3	E	1010	GLN

### 5.3.3 RNA ⓘ

Mol	Chain	Analysed	Backbone Outliers	Pucker Outliers
1	A	0/119	-	-
2	B	0/93	-	-
All	All	0/212	-	-

There are no RNA backbone outliers to report.

There are no RNA pucker outliers to report.

## 5.4 Non-standard residues in protein, DNA, RNA chains [i](#)

There are no non-standard protein/DNA/RNA residues in this entry.

## 5.5 Carbohydrates [i](#)

14 monosaccharides are modelled in this entry.

In the following table, the Counts columns list the number of bonds (or angles) for which Mogul statistics could be retrieved, the number of bonds (or angles) that are observed in the model and the number of bonds (or angles) that are defined in the Chemical Component Dictionary. The Link column lists molecule types, if any, to which the group is linked. The Z score for a bond length (or angle) is the number of standard deviations the observed value is removed from the expected value. A bond length (or angle) with  $|Z| > 2$  is considered an outlier worth inspection. RMSZ is the root-mean-square of all Z scores of the bond lengths (or angles).

Mol	Type	Chain	Res	Link	Bond lengths			Bond angles		
					Counts	RMSZ	# Z  > 2	Counts	RMSZ	# Z  > 2
4	NAG	F	1	4,3	14,14,15	0.75	0	17,19,21	1.58	4 (23%)
4	NAG	F	2	4	14,14,15	0.85	1 (7%)	17,19,21	1.65	3 (17%)
4	NAG	G	1	4,3	14,14,15	0.73	0	17,19,21	0.97	0
4	NAG	G	2	4	14,14,15	0.71	0	17,19,21	0.86	0
4	NAG	H	1	4,3	14,14,15	0.75	0	17,19,21	1.19	3 (17%)
4	NAG	H	2	4	14,14,15	0.67	0	17,19,21	0.83	0
4	NAG	I	1	4,3	14,14,15	0.68	0	17,19,21	0.91	0
4	NAG	I	2	4	14,14,15	0.71	0	17,19,21	0.91	0
4	NAG	J	1	4,3	14,14,15	0.72	0	17,19,21	0.94	0
4	NAG	J	2	4	14,14,15	0.70	0	17,19,21	0.84	0
4	NAG	K	1	4,3	14,14,15	0.76	0	17,19,21	1.38	2 (11%)
4	NAG	K	2	4	14,14,15	0.84	1 (7%)	17,19,21	1.13	1 (5%)
4	NAG	L	1	4,3	14,14,15	0.64	0	17,19,21	0.95	1 (5%)
4	NAG	L	2	4	14,14,15	0.70	0	17,19,21	1.10	2 (11%)

In the following table, the Chirals column lists the number of chiral outliers, the number of chiral centers analysed, the number of these observed in the model and the number defined in the Chemical Component Dictionary. Similar counts are reported in the Torsion and Rings columns. '-' means no outliers of that kind were identified.

Mol	Type	Chain	Res	Link	Chirals	Torsions	Rings
4	NAG	F	1	4,3	-	0/6/23/26	0/1/1/1
4	NAG	F	2	4	-	3/6/23/26	0/1/1/1
4	NAG	G	1	4,3	-	0/6/23/26	0/1/1/1
4	NAG	G	2	4	-	1/6/23/26	0/1/1/1
4	NAG	H	1	4,3	-	0/6/23/26	0/1/1/1
4	NAG	H	2	4	-	0/6/23/26	0/1/1/1
4	NAG	I	1	4,3	-	0/6/23/26	0/1/1/1
4	NAG	I	2	4	-	1/6/23/26	0/1/1/1
4	NAG	J	1	4,3	-	0/6/23/26	0/1/1/1
4	NAG	J	2	4	-	0/6/23/26	0/1/1/1
4	NAG	K	1	4,3	-	0/6/23/26	0/1/1/1
4	NAG	K	2	4	-	0/6/23/26	0/1/1/1
4	NAG	L	1	4,3	-	1/6/23/26	0/1/1/1
4	NAG	L	2	4	-	2/6/23/26	0/1/1/1

All (2) bond length outliers are listed below:

Mol	Chain	Res	Type	Atoms	Z	Observed(Å)	Ideal(Å)
4	F	2	NAG	C1-C2	2.43	1.55	1.52
4	K	2	NAG	C1-C2	2.18	1.55	1.52

All (16) bond angle outliers are listed below:

Mol	Chain	Res	Type	Atoms	Z	Observed(°)	Ideal(°)
4	F	2	NAG	C2-N2-C7	4.50	128.93	122.90
4	F	1	NAG	O4-C4-C3	-3.47	102.20	110.38
4	F	2	NAG	C1-O5-C5	3.14	116.40	112.19
4	K	1	NAG	O5-C1-C2	-2.90	106.80	111.29
4	F	1	NAG	O5-C1-C2	-2.65	107.20	111.29
4	K	1	NAG	O4-C4-C3	-2.64	104.15	110.38
4	F	1	NAG	C4-C3-C2	2.61	114.84	111.02
4	K	2	NAG	C2-N2-C7	2.56	126.33	122.90
4	L	2	NAG	C2-N2-C7	2.48	126.22	122.90
4	H	1	NAG	C1-O5-C5	2.33	115.31	112.19
4	L	2	NAG	C1-O5-C5	2.31	115.28	112.19
4	L	1	NAG	O5-C1-C2	-2.25	107.81	111.29
4	H	1	NAG	O4-C4-C3	-2.07	105.48	110.38
4	F	2	NAG	O7-C7-N2	2.05	125.61	121.98
4	F	1	NAG	O4-C4-C5	2.04	114.34	109.32
4	H	1	NAG	C2-N2-C7	2.03	125.62	122.90

There are no chirality outliers.

All (8) torsion outliers are listed below:

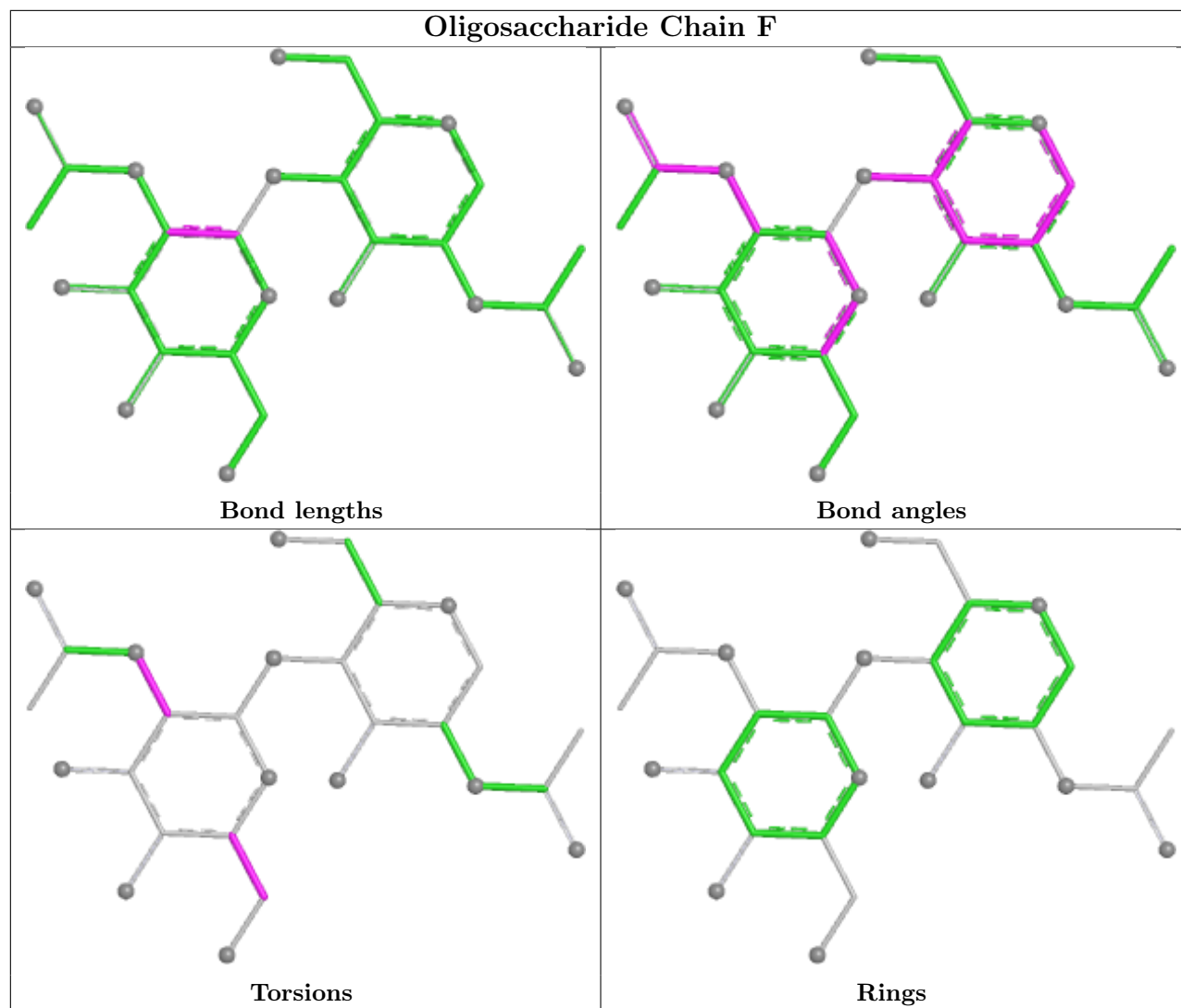
Mol	Chain	Res	Type	Atoms
4	L	2	NAG	C8-C7-N2-C2
4	L	2	NAG	O7-C7-N2-C2
4	I	2	NAG	O5-C5-C6-O6
4	G	2	NAG	O5-C5-C6-O6
4	F	2	NAG	O5-C5-C6-O6
4	L	1	NAG	O5-C5-C6-O6
4	F	2	NAG	C1-C2-N2-C7
4	F	2	NAG	C3-C2-N2-C7

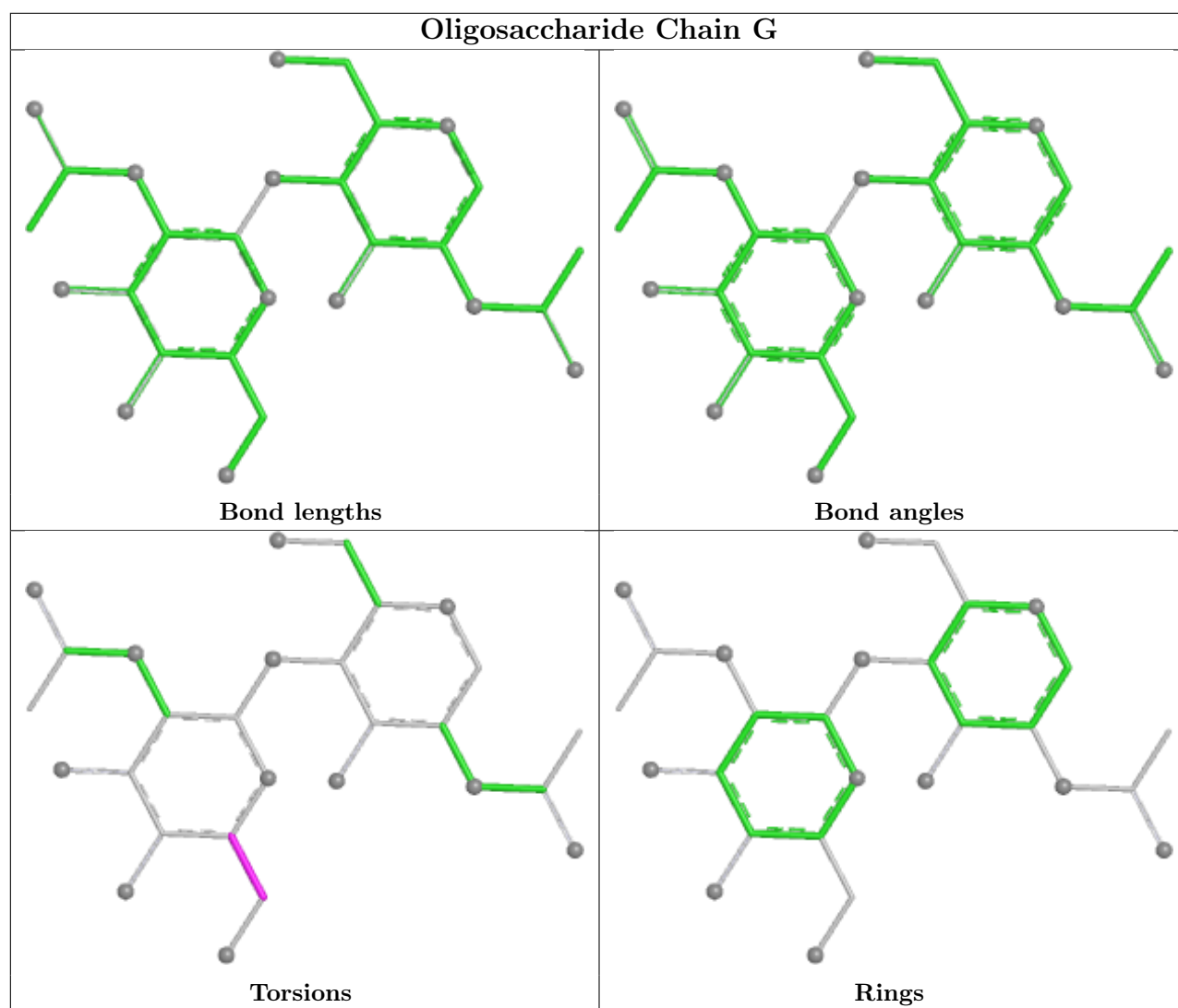
There are no ring outliers.

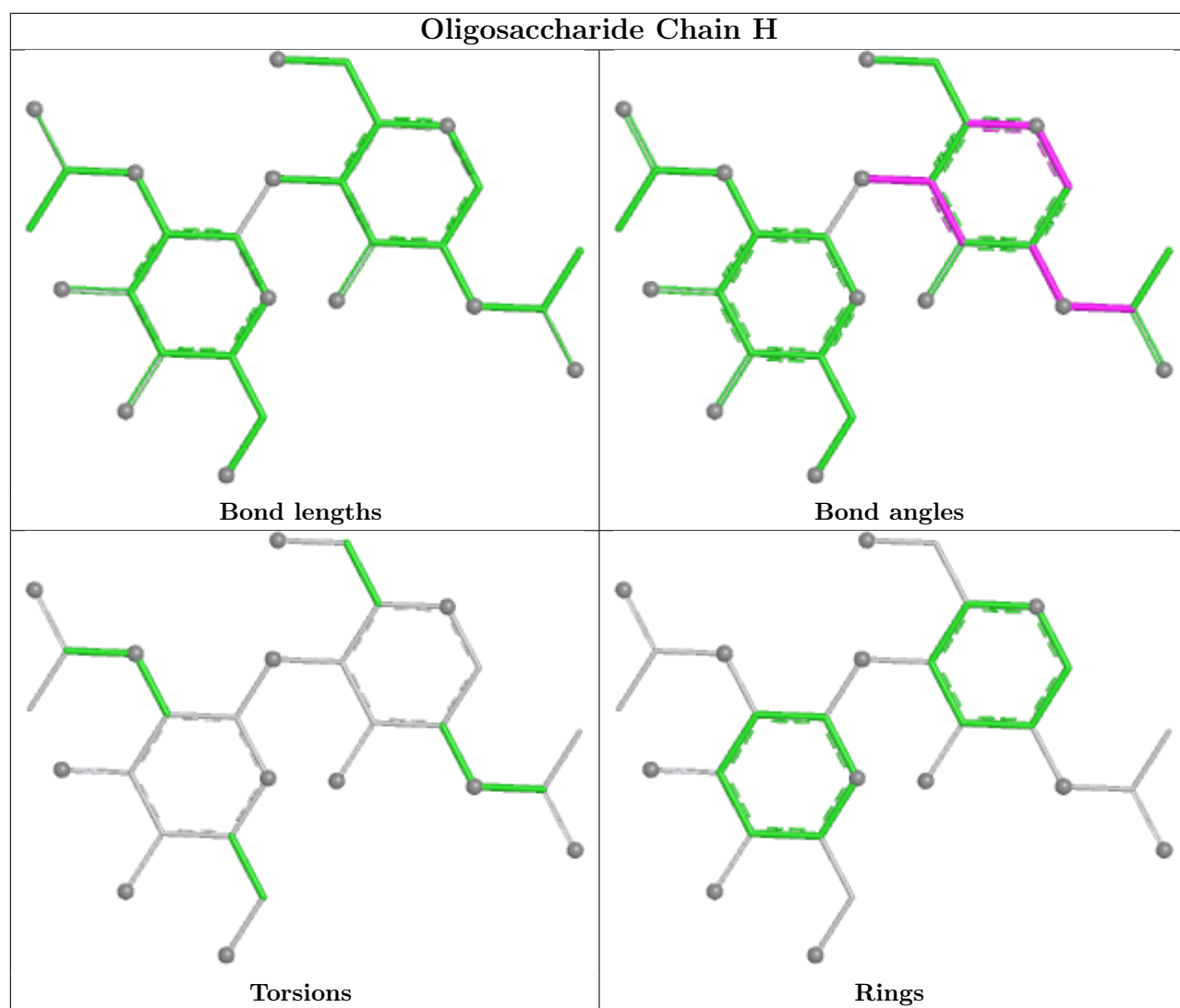
3 monomers are involved in 2 short contacts:

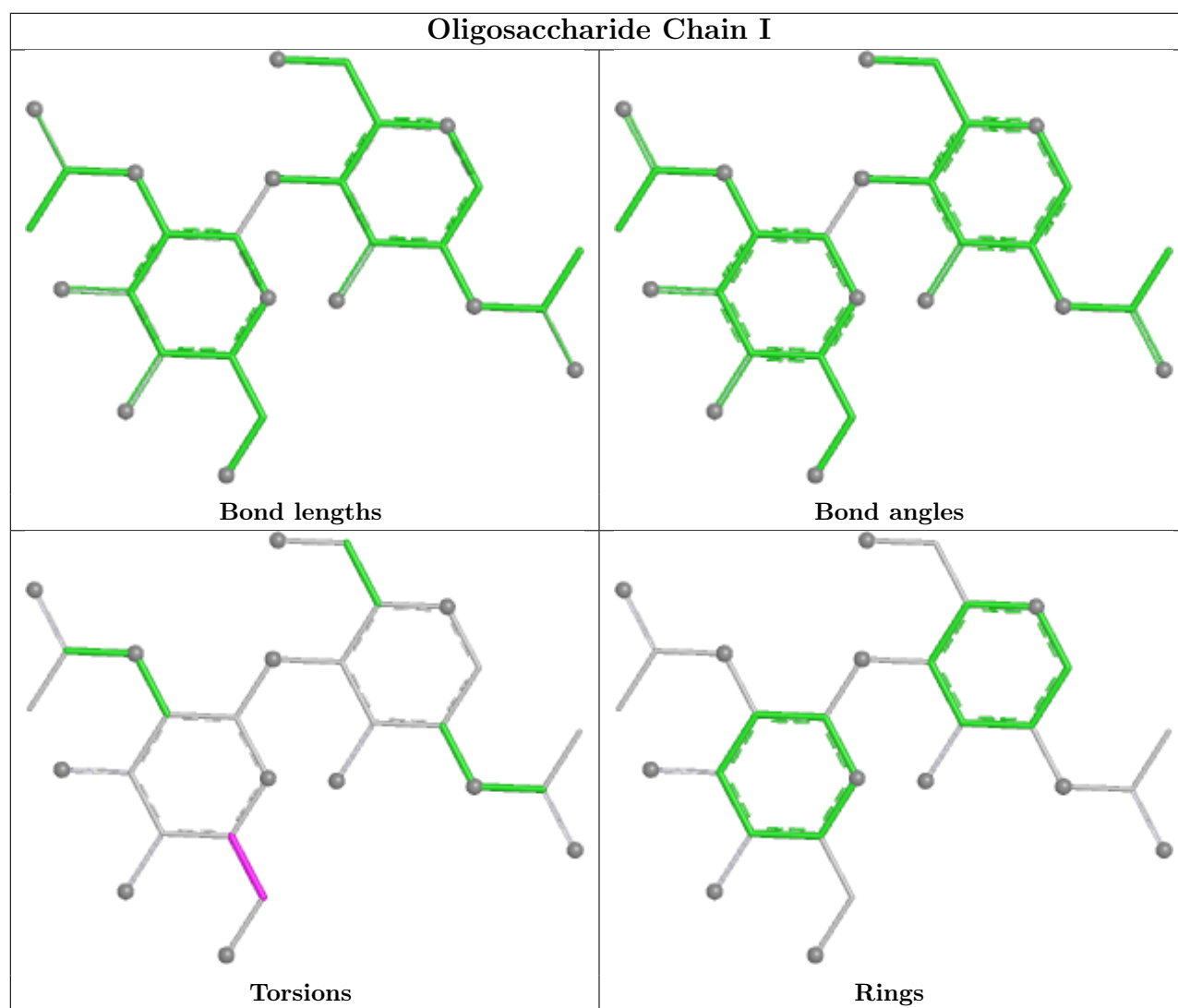
Mol	Chain	Res	Type	Clashes	Symm-Clashes
4	F	2	NAG	1	0
4	K	1	NAG	1	0
4	F	1	NAG	1	0

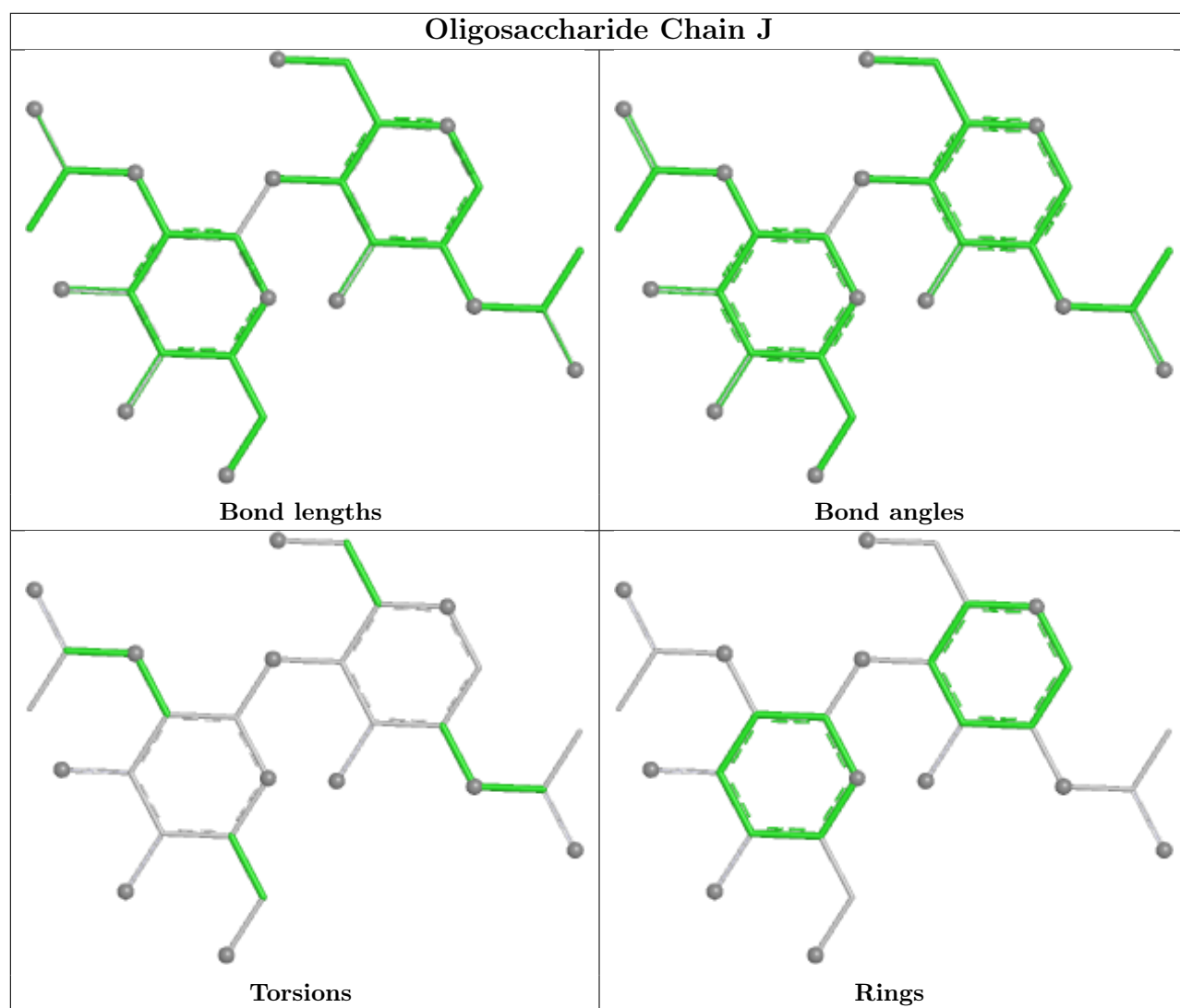
The following is a two-dimensional graphical depiction of Mogul quality analysis of bond lengths, bond angles, torsion angles, and ring geometry for oligosaccharide.

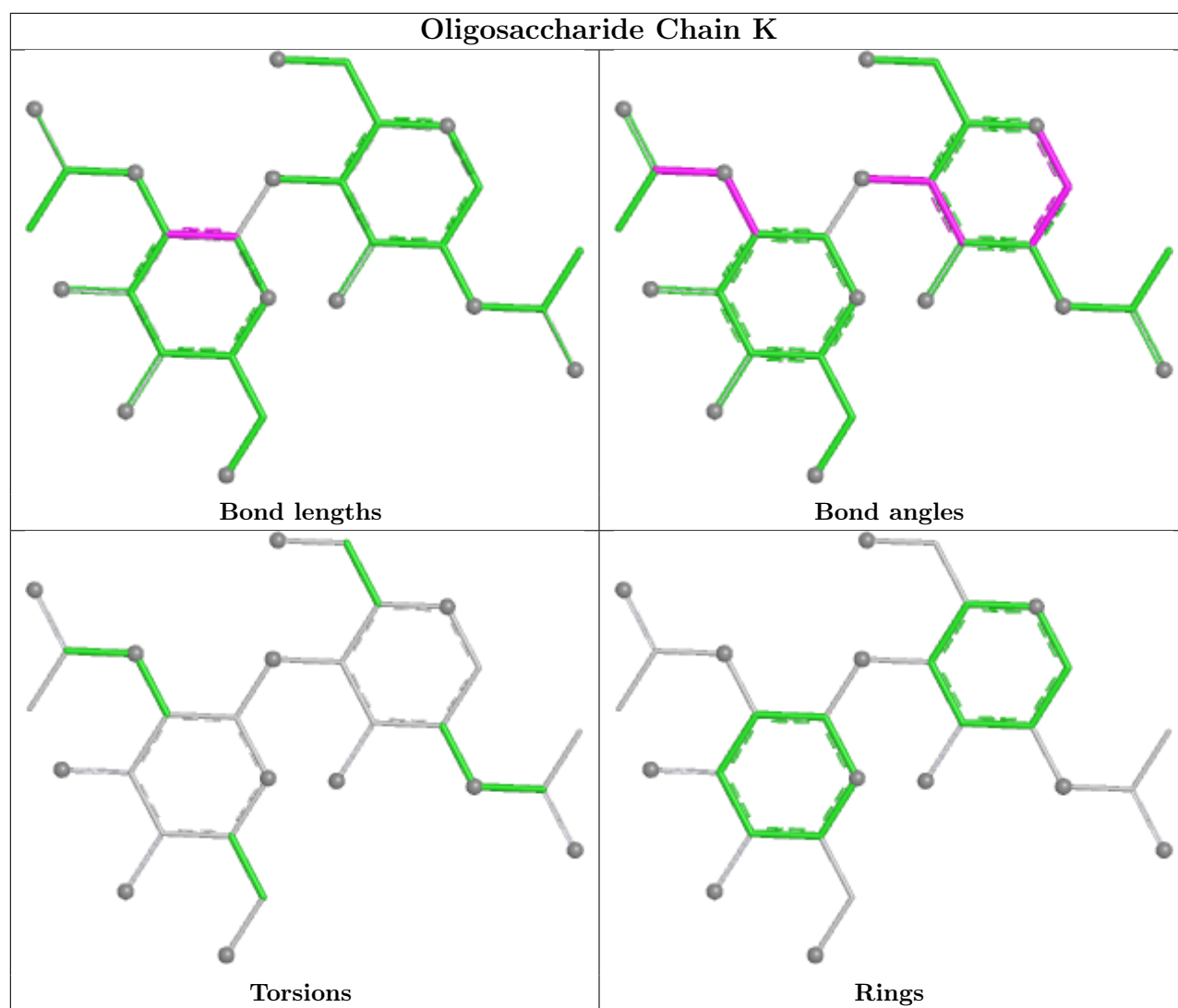


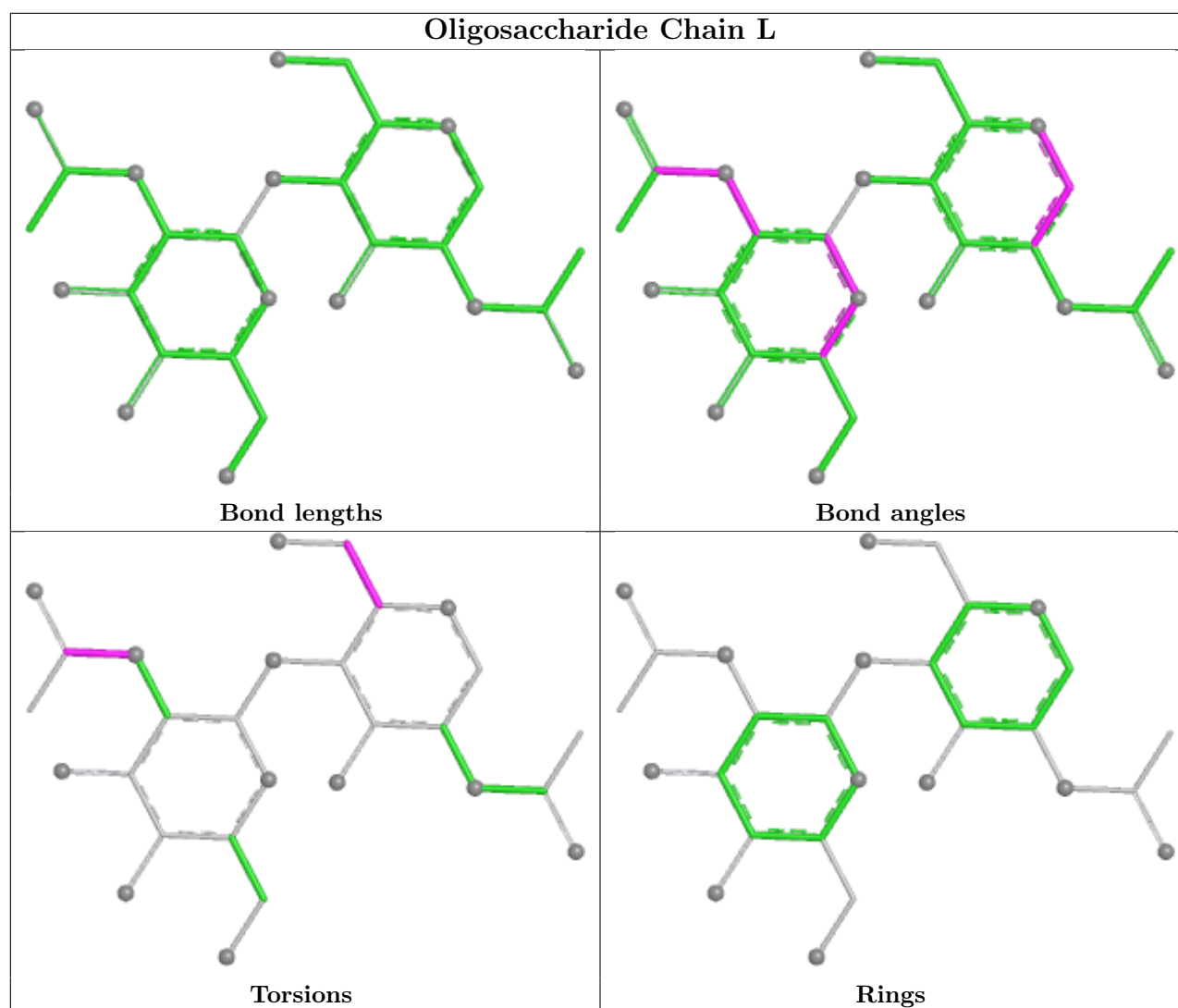












## 5.6 Ligand geometry [i](#)

5 ligands are modelled in this entry.

In the following table, the Counts columns list the number of bonds (or angles) for which Mogul statistics could be retrieved, the number of bonds (or angles) that are observed in the model and the number of bonds (or angles) that are defined in the Chemical Component Dictionary. The Link column lists molecule types, if any, to which the group is linked. The Z score for a bond length (or angle) is the number of standard deviations the observed value is removed from the expected value. A bond length (or angle) with  $|Z| > 2$  is considered an outlier worth inspection. RMSZ is the root-mean-square of all Z scores of the bond lengths (or angles).

Mol	Type	Chain	Res	Link	Bond lengths			Bond angles		
					Counts	RMSZ	$\# Z  > 2$	Counts	RMSZ	$\# Z  > 2$
5	NAG	C	1202	3	14,14,15	0.70	0	17,19,21	0.94	1 (5%)
5	NAG	C	1201	3	14,14,15	0.70	0	17,19,21	0.83	0
5	NAG	D	2000	3	14,14,15	0.69	0	17,19,21	0.80	0

Mol	Type	Chain	Res	Link	Bond lengths			Bond angles		
					Counts	RMSZ	# Z  > 2	Counts	RMSZ	# Z  > 2
5	NAG	E	2000	3	14,14,15	0.70	0	17,19,21	0.84	0
5	NAG	C	1203	3	14,14,15	0.69	0	17,19,21	0.87	0

In the following table, the Chirals column lists the number of chiral outliers, the number of chiral centers analysed, the number of these observed in the model and the number defined in the Chemical Component Dictionary. Similar counts are reported in the Torsion and Rings columns. '-' means no outliers of that kind were identified.

Mol	Type	Chain	Res	Link	Chirals	Torsions	Rings
5	NAG	C	1202	3	-	1/6/23/26	0/1/1/1
5	NAG	C	1201	3	-	0/6/23/26	0/1/1/1
5	NAG	D	2000	3	-	0/6/23/26	0/1/1/1
5	NAG	E	2000	3	-	1/6/23/26	0/1/1/1
5	NAG	C	1203	3	-	0/6/23/26	0/1/1/1

There are no bond length outliers.

All (1) bond angle outliers are listed below:

Mol	Chain	Res	Type	Atoms	Z	Observed(°)	Ideal(°)
5	C	1202	NAG	C1-O5-C5	2.37	115.36	112.19

There are no chirality outliers.

All (2) torsion outliers are listed below:

Mol	Chain	Res	Type	Atoms
5	C	1202	NAG	O5-C5-C6-O6
5	E	2000	NAG	O5-C5-C6-O6

There are no ring outliers.

No monomer is involved in short contacts.

## 5.7 Other polymers ⓘ

There are no such residues in this entry.

## 5.8 Polymer linkage issues ⓘ

The following chains have linkage breaks:

Mol	Chain	Number of breaks
2	B	1

All chain breaks are listed below:

Model	Chain	Residue-1	Atom-1	Residue-2	Atom-2	Distance (Å)
1	B	72:UNK	C	82:UNK	C	15.71

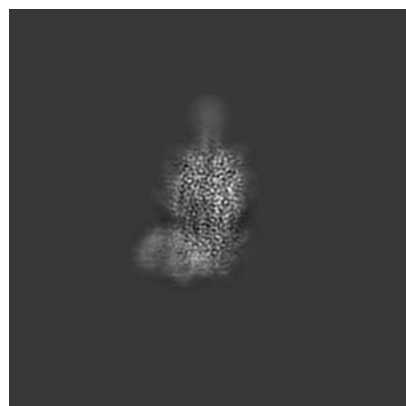
## 6 Map visualisation [i](#)

This section contains visualisations of the EMDB entry EMD-73884. These allow visual inspection of the internal detail of the map and identification of artifacts.

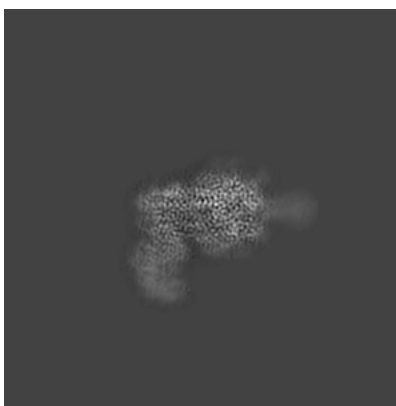
Images derived from a raw map, generated by summing the deposited half-maps, are presented below the corresponding image components of the primary map to allow further visual inspection and comparison with those of the primary map.

### 6.1 Orthogonal projections [i](#)

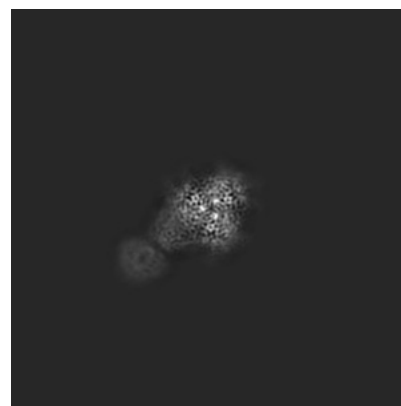
#### 6.1.1 Primary map



X

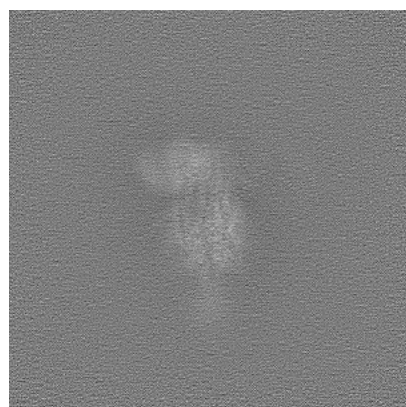


Y

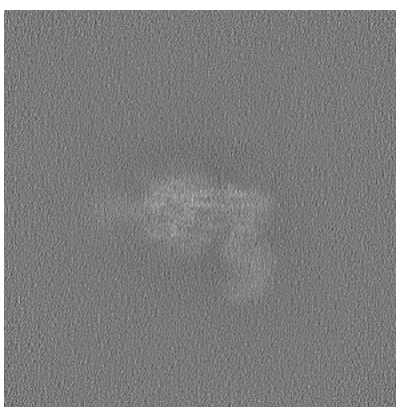


Z

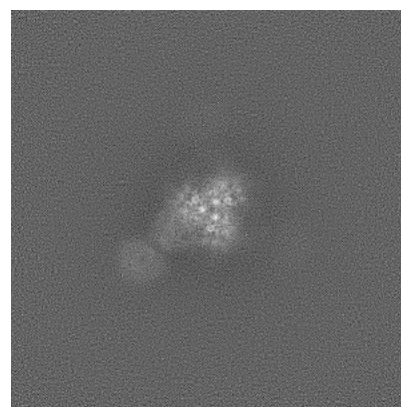
#### 6.1.2 Raw map



X



Y

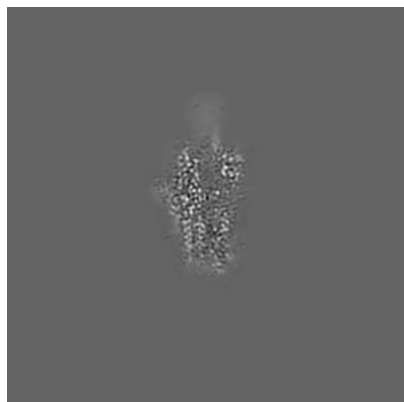


Z

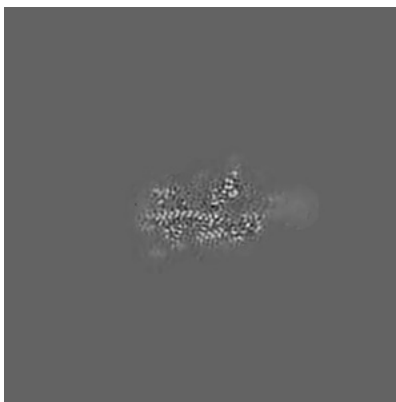
The images above show the map projected in three orthogonal directions.

## 6.2 Central slices [i](#)

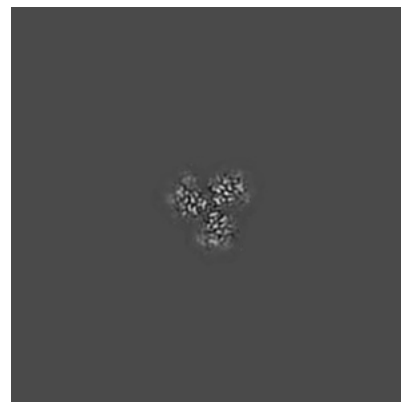
### 6.2.1 Primary map



X Index: 240

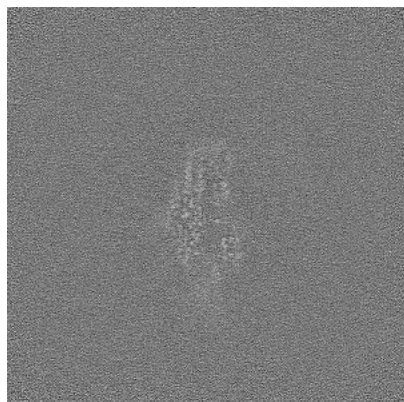


Y Index: 240



Z Index: 240

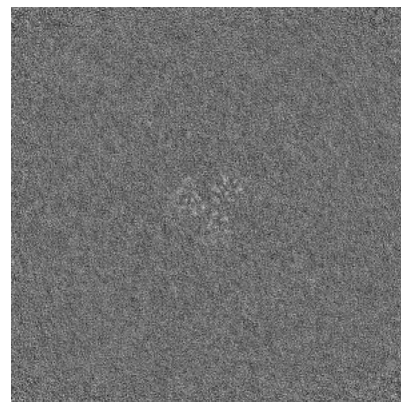
### 6.2.2 Raw map



X Index: 240



Y Index: 240

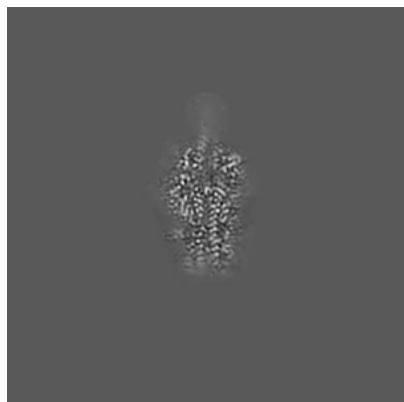


Z Index: 240

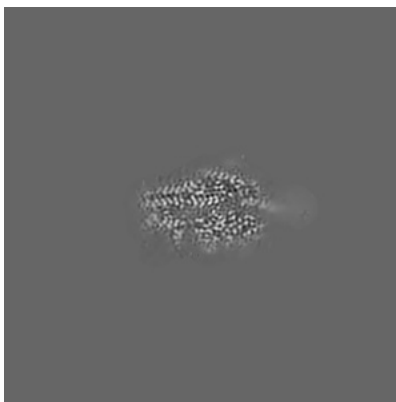
The images above show central slices of the map in three orthogonal directions.

## 6.3 Largest variance slices [i](#)

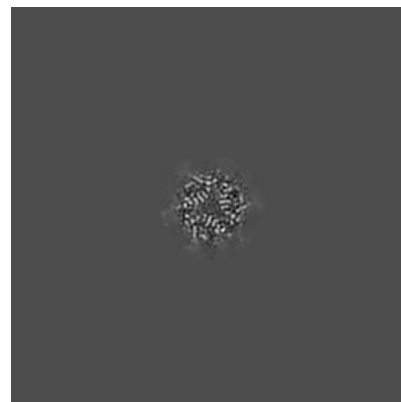
### 6.3.1 Primary map



X Index: 247

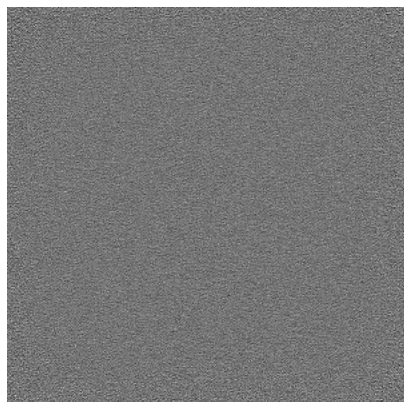


Y Index: 250

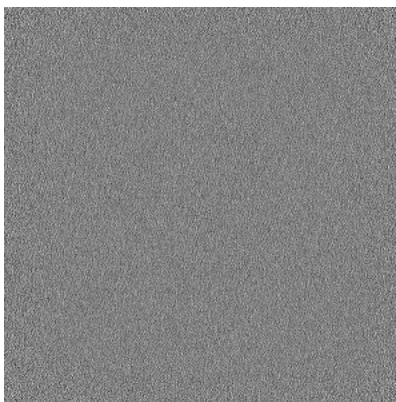


Z Index: 276

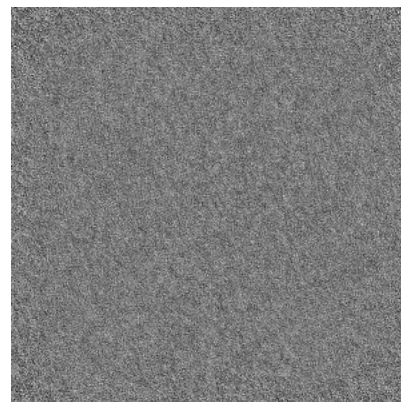
### 6.3.2 Raw map



X Index: 0



Y Index: 0

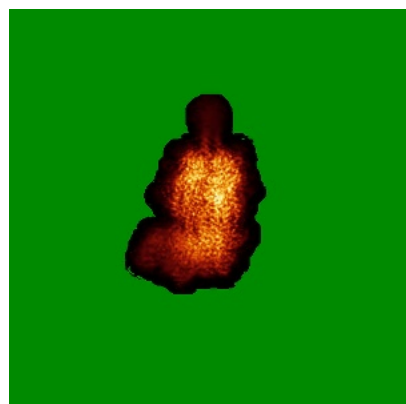


Z Index: 0

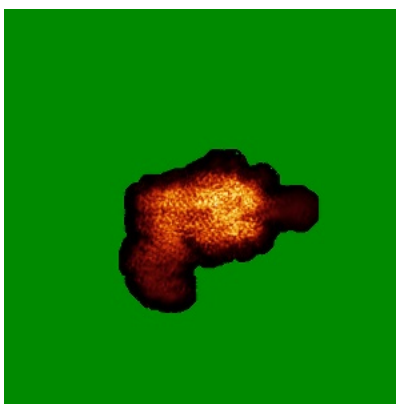
The images above show the largest variance slices of the map in three orthogonal directions.

## 6.4 Orthogonal standard-deviation projections (False-color) [i](#)

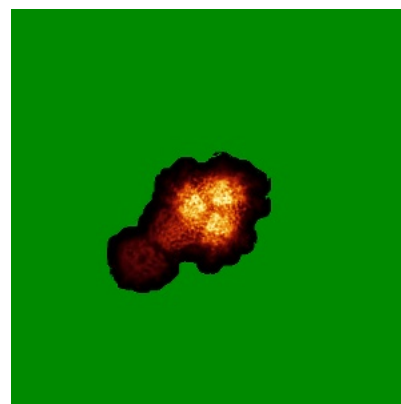
### 6.4.1 Primary map



X

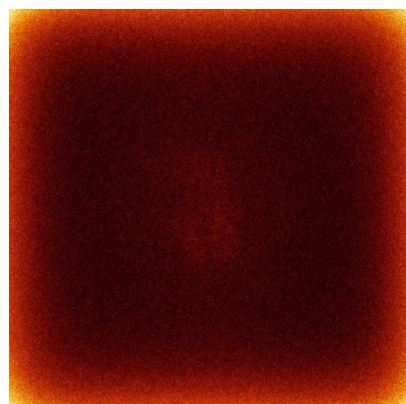


Y

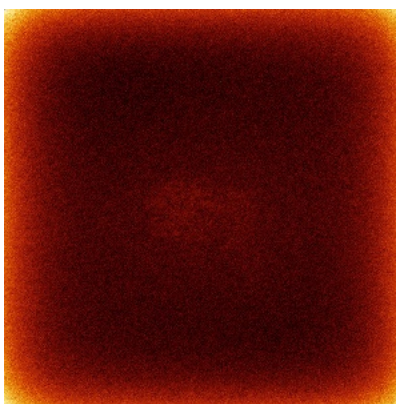


Z

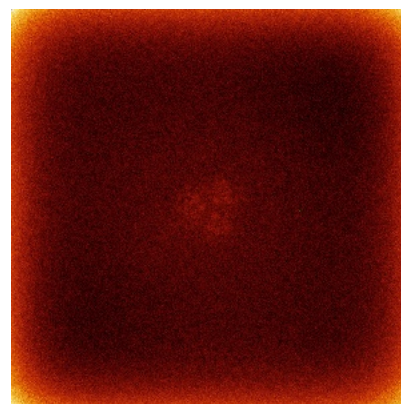
### 6.4.2 Raw map



X



Y

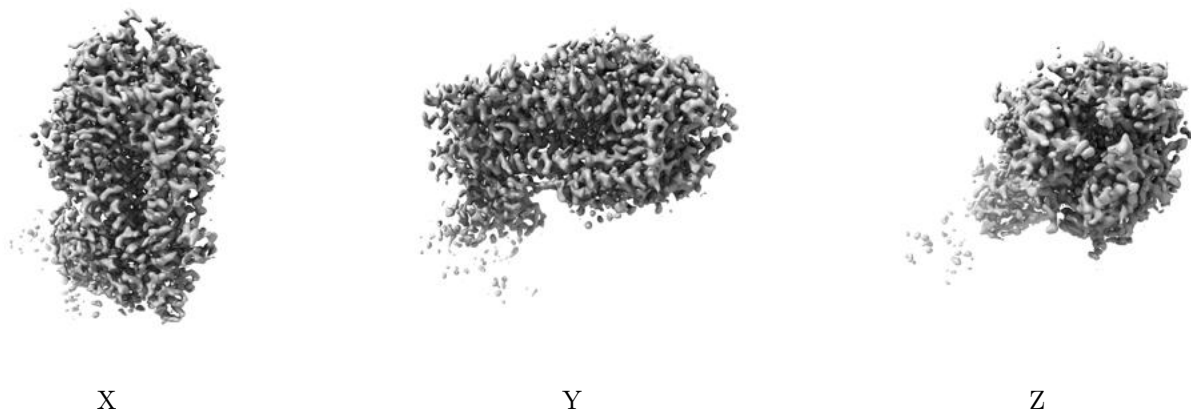


Z

The images above show the map standard deviation projections with false color in three orthogonal directions. Minimum values are shown in green, max in blue, and dark to light orange shades represent small to large values respectively.

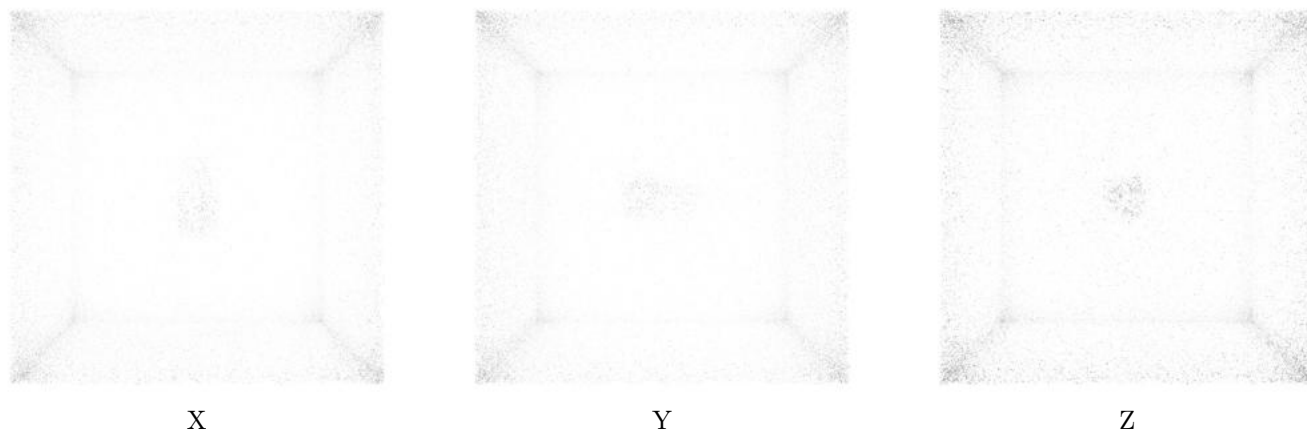
## 6.5 Orthogonal surface views [i](#)

### 6.5.1 Primary map



The images above show the 3D surface view of the map at the recommended contour level 0.15. These images, in conjunction with the slice images, may facilitate assessment of whether an appropriate contour level has been provided.

### 6.5.2 Raw map



These images show the 3D surface of the raw map. The raw map's contour level was selected so that its surface encloses the same volume as the primary map does at its recommended contour level.

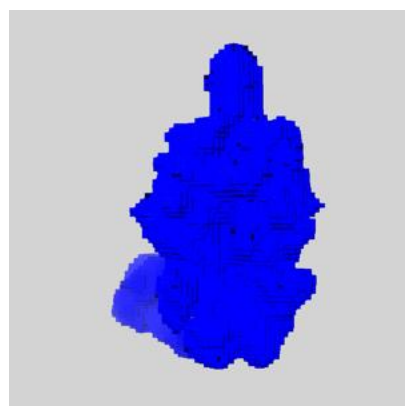
## 6.6 Mask visualisation [i](#)

This section shows the 3D surface view of the primary map at 50% transparency overlaid with the specified mask at 0% transparency

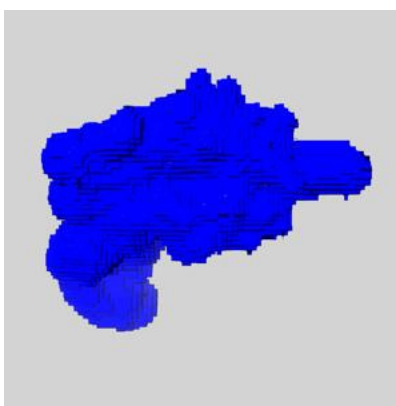
A mask typically either:

- Encompasses the whole structure
- Separates out a domain, a functional unit, a monomer or an area of interest from a larger structure

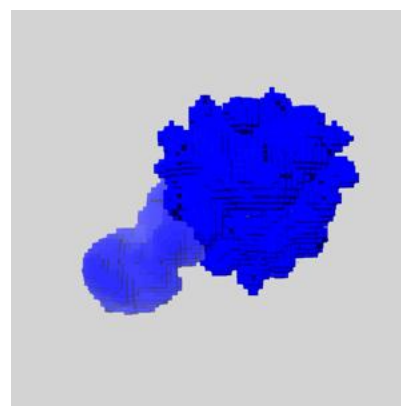
### 6.6.1 emd\_73884\_msk\_1.map [i](#)



X



Y

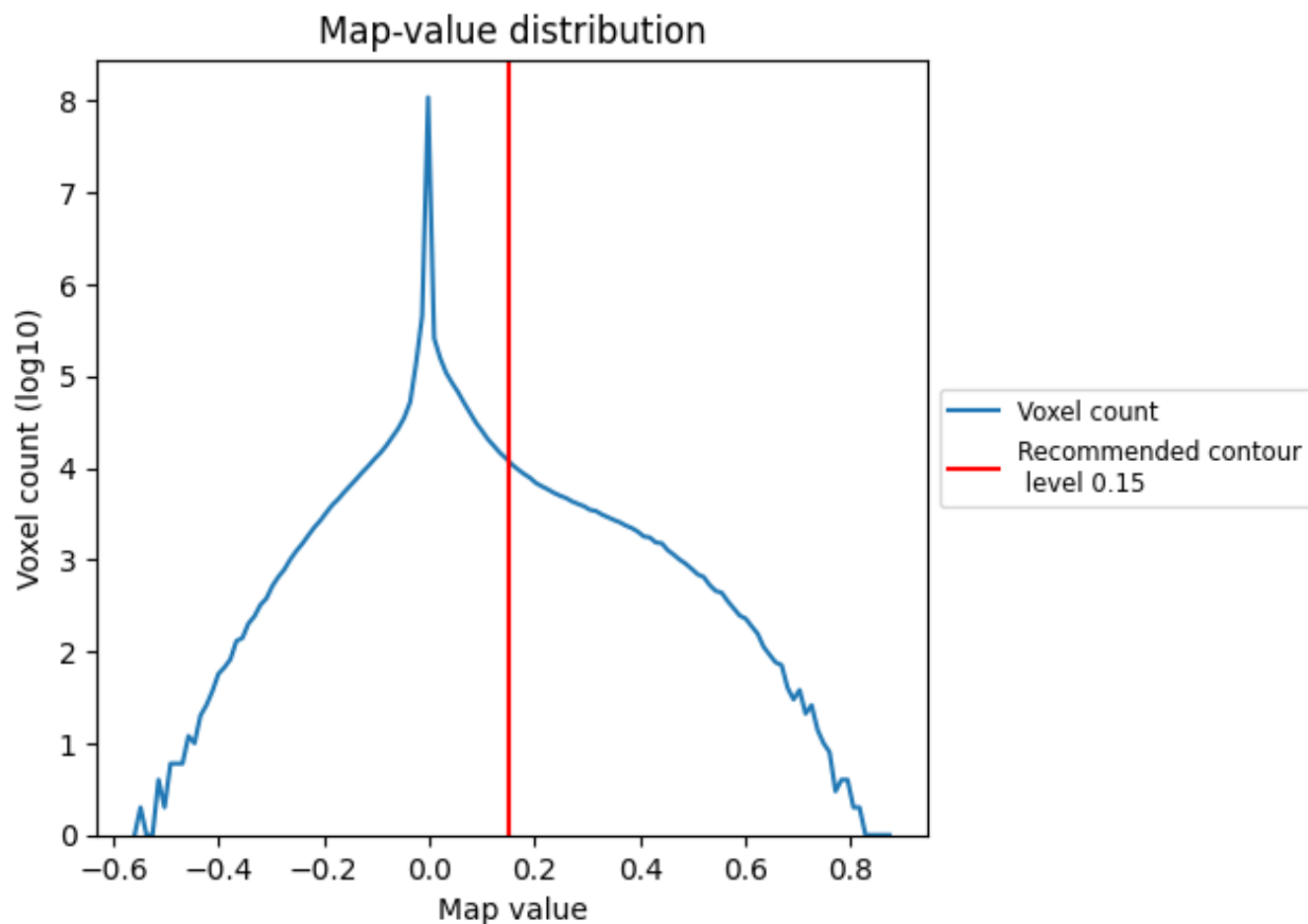


Z

## 7 Map analysis [i](#)

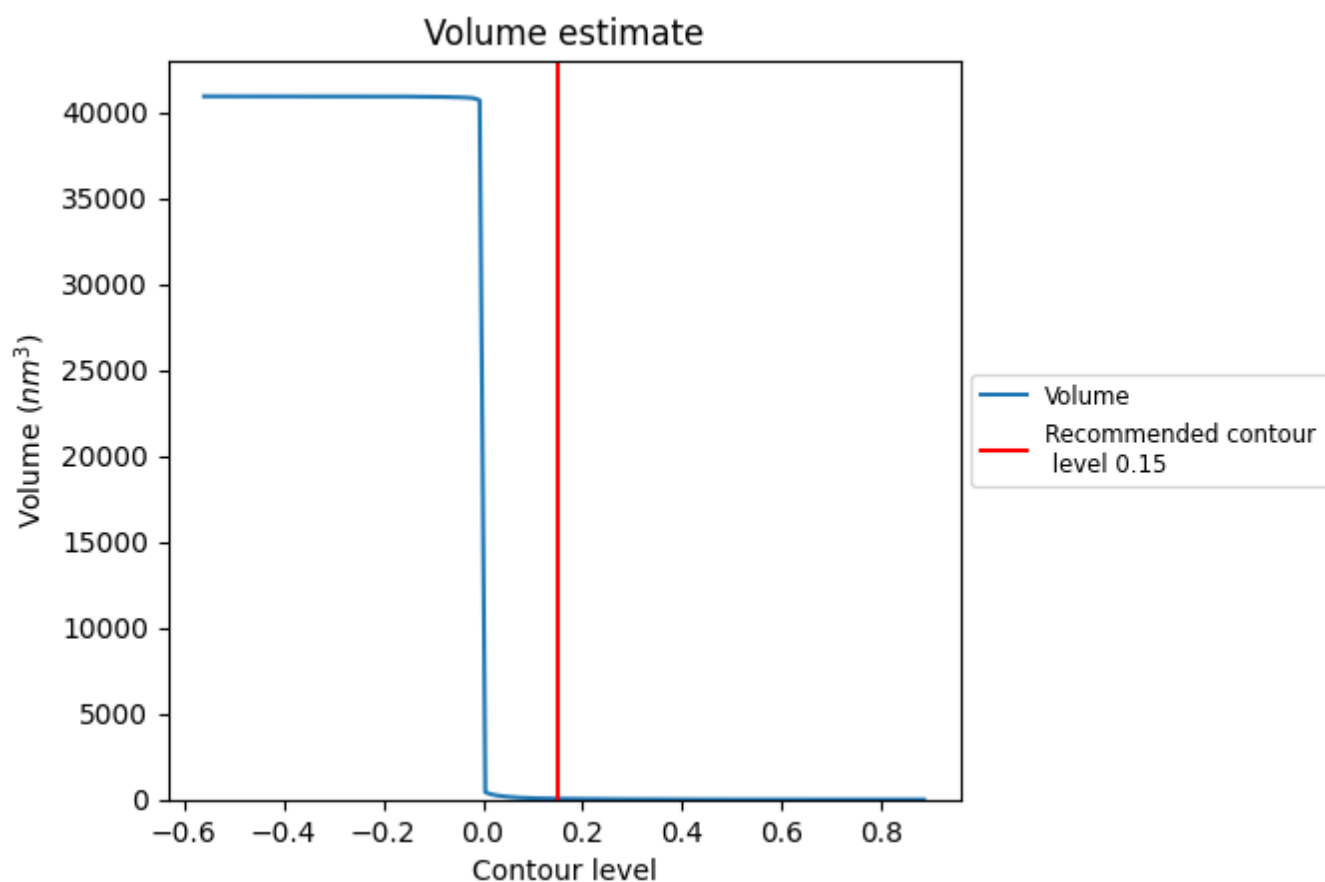
This section contains the results of statistical analysis of the map.

### 7.1 Map-value distribution [i](#)



The map-value distribution is plotted in 128 intervals along the x-axis. The y-axis is logarithmic. A spike in this graph at zero usually indicates that the volume has been masked.

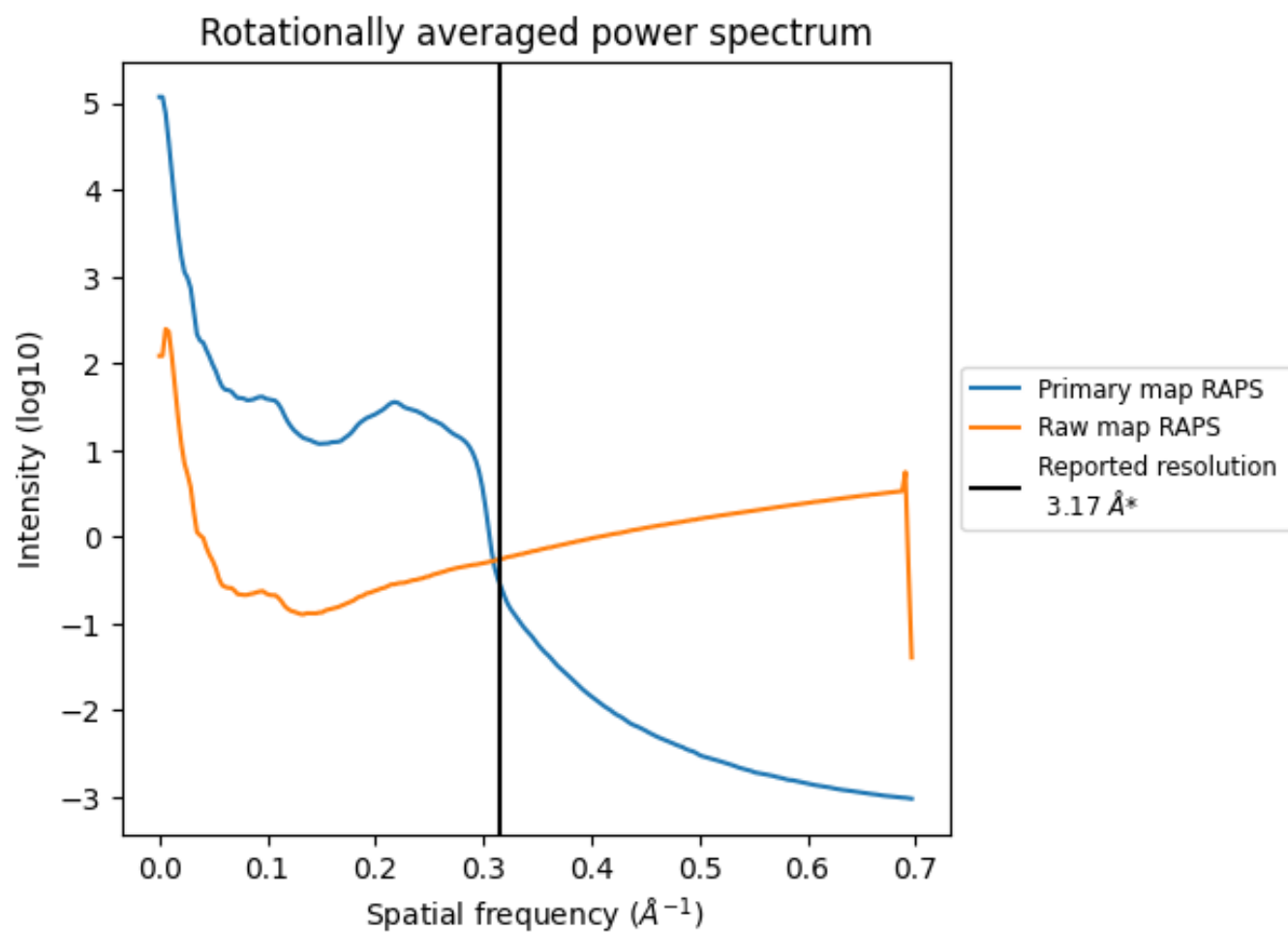
## 7.2 Volume estimate [i](#)



The volume at the recommended contour level is 49 nm<sup>3</sup>; this corresponds to an approximate mass of 44 kDa.

The volume estimate graph shows how the enclosed volume varies with the contour level. The recommended contour level is shown as a vertical line and the intersection between the line and the curve gives the volume of the enclosed surface at the given level.

### 7.3 Rotationally averaged power spectrum [i](#)

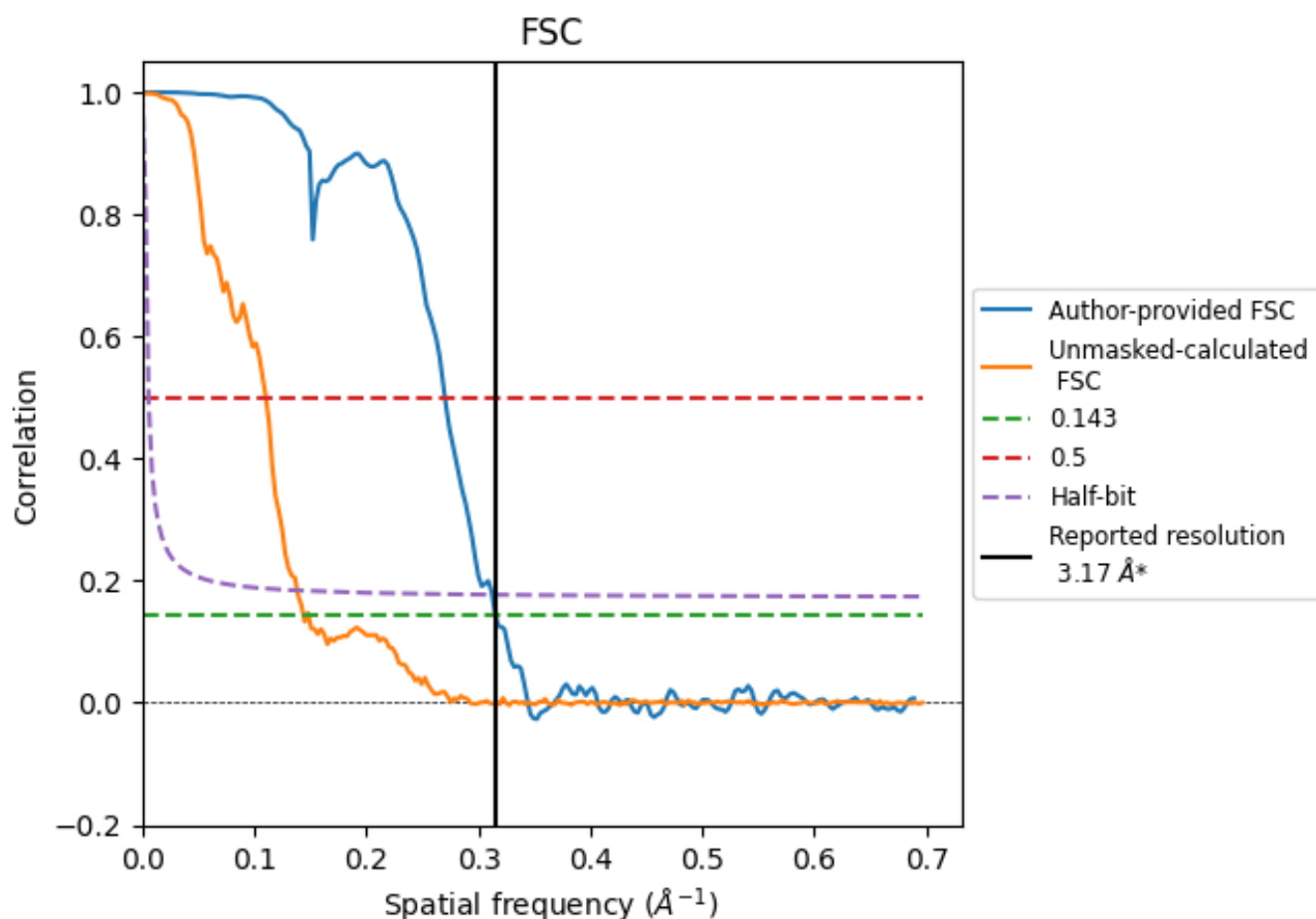


\*Reported resolution corresponds to spatial frequency of 0.315  $\text{\AA}^{-1}$

## 8 Fourier-Shell correlation [i](#)

Fourier-Shell Correlation (FSC) is the most commonly used method to estimate the resolution of single-particle and subtomogram-averaged maps. The shape of the curve depends on the imposed symmetry, mask and whether or not the two 3D reconstructions used were processed from a common reference. The reported resolution is shown as a black line. A curve is displayed for the half-bit criterion in addition to lines showing the 0.143 gold standard cut-off and 0.5 cut-off.

### 8.1 FSC [i](#)



\*Reported resolution corresponds to spatial frequency of 0.315 Å<sup>-1</sup>

## 8.2 Resolution estimates [i](#)

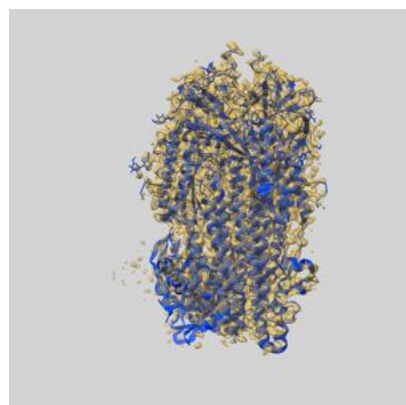
Resolution estimate (Å)	Estimation criterion (FSC cut-off)		
	0.143	0.5	Half-bit
Reported by author	3.17	-	-
Author-provided FSC curve	3.17	3.70	3.20
Unmasked-calculated*	6.94	9.06	7.23

\*Resolution estimate based on FSC curve calculated by comparison of deposited half-maps. The value from deposited half-maps intersecting FSC 0.143 CUT-OFF 6.94 differs from the reported value 3.17 by more than 10 %

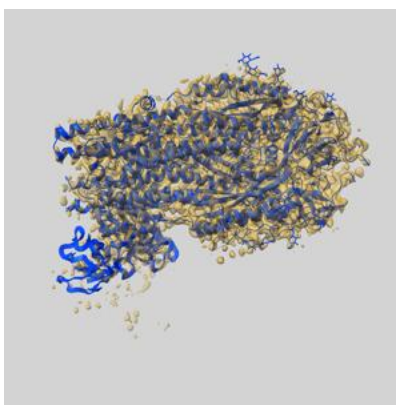
## 9 Map-model fit [i](#)

This section contains information regarding the fit between EMDB map EMD-73884 and PDB model 9Z80. Per-residue inclusion information can be found in section 3 on page 8.

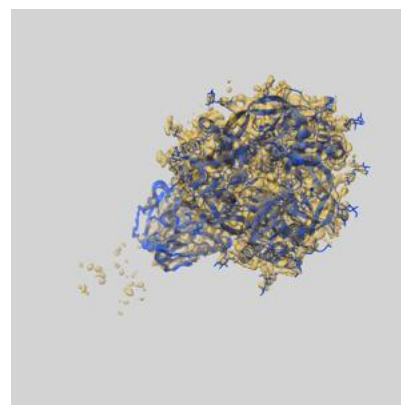
### 9.1 Map-model overlay [i](#)



X



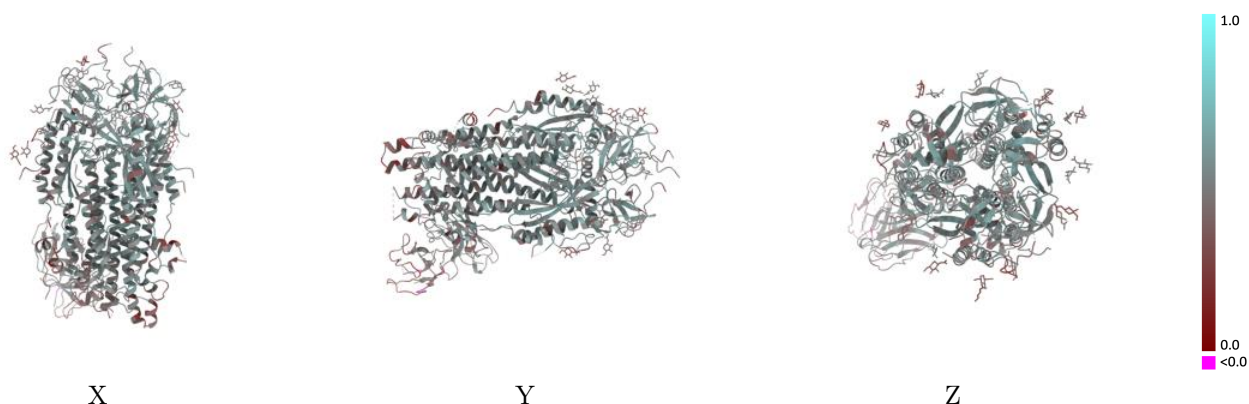
Y



Z

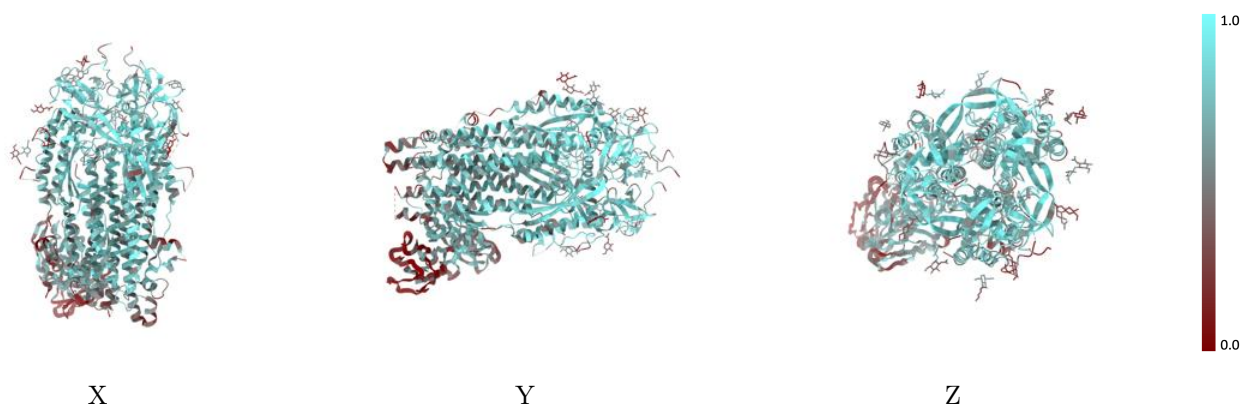
The images above show the 3D surface view of the map at the recommended contour level 0.15 at 50% transparency in yellow overlaid with a ribbon representation of the model coloured in blue. These images allow for the visual assessment of the quality of fit between the atomic model and the map.

## 9.2 Q-score mapped to coordinate model [i](#)



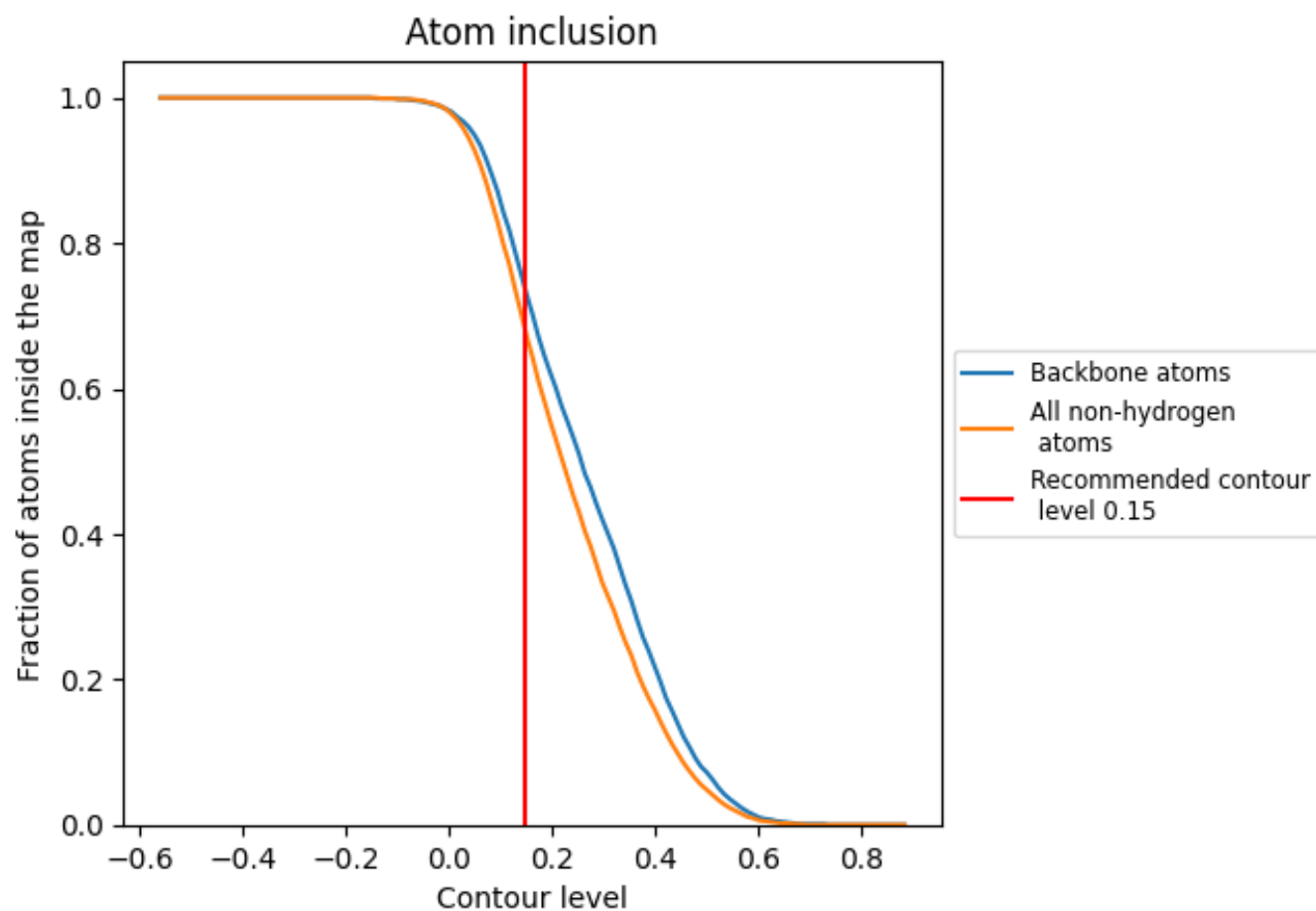
The images above show the model with each residue coloured according its Q-score. This shows their resolvability in the map with higher Q-score values reflecting better resolvability. Please note: Q-score is calculating the resolvability of atoms, and thus high values are only expected at resolutions at which atoms can be resolved. Low Q-score values may therefore be expected for many entries.

## 9.3 Atom inclusion mapped to coordinate model [i](#)



The images above show the model with each residue coloured according to its atom inclusion. This shows to what extent they are inside the map at the recommended contour level (0.15).

## 9.4 Atom inclusion [i](#)



At the recommended contour level, 73% of all backbone atoms, 68% of all non-hydrogen atoms, are inside the map.

9.5 Map-model fit summary ⓘ

The table lists the average atom inclusion at the recommended contour level (0.15) and Q-score for the entire model and for each chain.

Chain	Atom inclusion	Q-score
All	<div></div> 0.6760	<div></div> 0.4880
A	<div></div> 0.6250	<div></div> 0.4650
B	<div></div> 0.2330	<div></div> 0.3380
C	<div></div> 0.7140	<div></div> 0.5030
D	<div></div> 0.6810	<div></div> 0.4880
E	<div></div> 0.7230	<div></div> 0.5040
F	<div></div> 0.3570	<div></div> 0.3780
G	<div></div> 0.5360	<div></div> 0.4440
H	<div></div> 0.4290	<div></div> 0.3050
I	<div></div> 0.4640	<div></div> 0.3890
J	<div></div> 0.5000	<div></div> 0.4630
K	<div></div> 0.2140	<div></div> 0.3890
L	<div></div> 0.3210	<div></div> 0.3430

1.0

0.0

<0.0