



Full wwPDB EM Validation Report ⓘ

Apr 6, 2026 – 03:05 AM UTC

PDB ID : 9Y9M / pdb_00009y9m
EMDB ID : EMD-72711
Title : Capping protein bound to the barbed end of cofilactin
Authors : Palmer, N.J.; Dominguez, R.
Deposited on : 2025-09-14
Resolution : 3.06 Å(reported)

This is a Full wwPDB EM Validation Report for a publicly released PDB entry.

We welcome your comments at validation@mail.wwpdb.org

A user guide is available at

<https://www.wwpdb.org/validation/2017/EMValidationReportHelp>

with specific help available everywhere you see the ⓘ symbol.

The types of validation reports are described at

<http://www.wwpdb.org/validation/2017/FAQs#types>.

The following versions of software and data (see [references ⓘ](#)) were used in the production of this report:

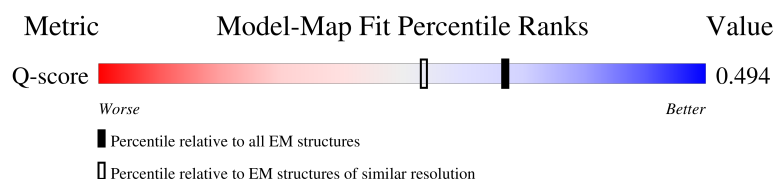
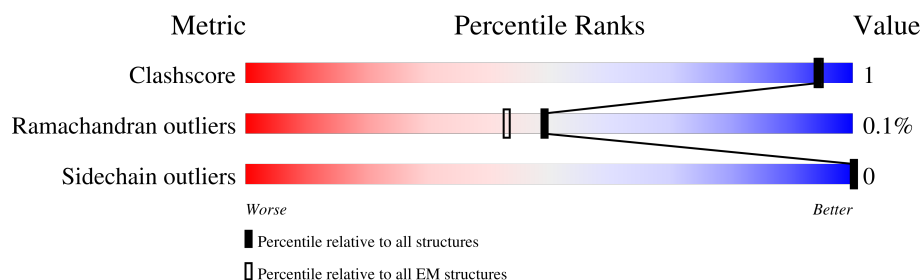
EMDB validation analysis : 0.0.1.dev132
Mogul : 2022.3.0, CSD as543be (2022)
MolProbity : 4-5-2 with Phenix2.0
Buster-report : wwPDB partial adaption of 1.1.7 (2018)
Percentile statistics : 20250101.v01 (using entries in the PDB archive January 1st 2025)
EM percentile statistics : 202505.v01 (Using data in the EMDB archive up until May 2025)
MapQ : 1.9.13
Ideal geometry (proteins) : Engh & Huber (2001)
Ideal geometry (DNA, RNA) : Parkinson et al. (1996)
Validation Pipeline (wwPDB-VP) : 2.49

1 Overall quality at a glance

The following experimental techniques were used to determine the structure:
ELECTRON MICROSCOPY


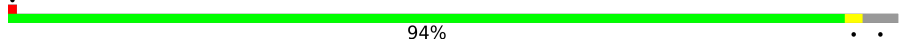
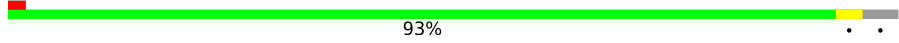
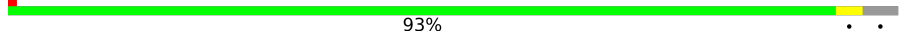
The reported resolution of this entry is 3.06 Å.

Percentile scores (ranging between 0-100) for global validation metrics of the entry are shown in the following graphic. The table shows the number of entries on which the scores are based.



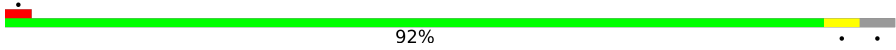
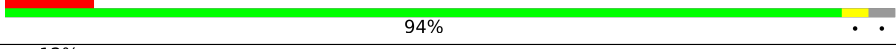
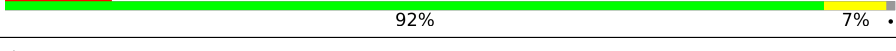
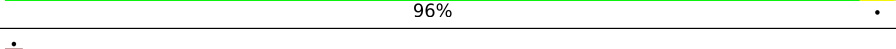
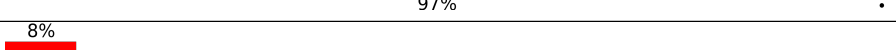
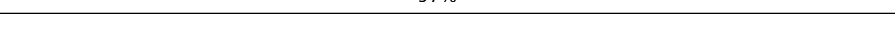
Metric	Whole archive (#Entries)	EM structures (#Entries)	Similar EM resolution (#Entries, resolution range(Å))
Clashscore	229148	23984	-
Ramachandran outliers	224038	23583	-
Sidechain outliers	223484	23102	-
Q-score	-	25397	13976 (2.56 - 3.56)

The table below summarises the geometric issues observed across the polymeric chains and their fit to the map. The red, orange, yellow and green segments of the bar indicate the fraction of residues that contain outliers for ≥ 3 , 2, 1 and 0 types of geometric quality criteria respectively. A grey segment represents the fraction of residues that are not modelled. The numeric value for each fraction is indicated below the corresponding segment, with a dot representing fractions $\leq 5\%$. The upper red bar (where present) indicates the fraction of residues that have poor fit to the EM map (all-atom inclusion $< 40\%$). The numeric value is given above the bar.

Mol	Chain	Length	Quality of chain
1	A	376	 92% . .
1	B	376	 94% . .
1	C	376	 93% . .
1	D	376	 93% . .

Continued on next page...

Continued from previous page...

Mol	Chain	Length	Quality of chain
1	E	376	 10% 92% . .
2	Y	286	 12% 94% . .
3	Z	272	 12% 92% 7% .
4	a	166	 96% .
4	b	166	 97% .
4	c	166	 8% 97% .

2 Entry composition

There are 6 unique types of molecules in this entry. The entry contains 22655 atoms, of which 0 are hydrogens and 0 are deuteriums.

In the tables below, the AltConf column contains the number of residues with at least one atom in alternate conformation and the Trace column contains the number of residues modelled with at most 2 atoms.

- Molecule 1 is a protein called Actin, alpha skeletal muscle.

Mol	Chain	Residues	Atoms					AltConf	Trace
1	A	362	Total	C	N	O	S	1	0
			2846	1805	478	544	19		
1	B	362	Total	C	N	O	S	1	0
			2846	1805	478	544	19		
1	C	362	Total	C	N	O	S	0	0
			2839	1800	476	544	19		
1	D	362	Total	C	N	O	S	0	0
			2839	1800	476	544	19		
1	E	362	Total	C	N	O	S	0	0
			2839	1800	476	544	19		

- Molecule 2 is a protein called F-actin-capping protein subunit alpha-1.

Mol	Chain	Residues	Atoms					AltConf	Trace
2	Y	276	Total	C	N	O	S	0	0
			2224	1402	387	430	5		

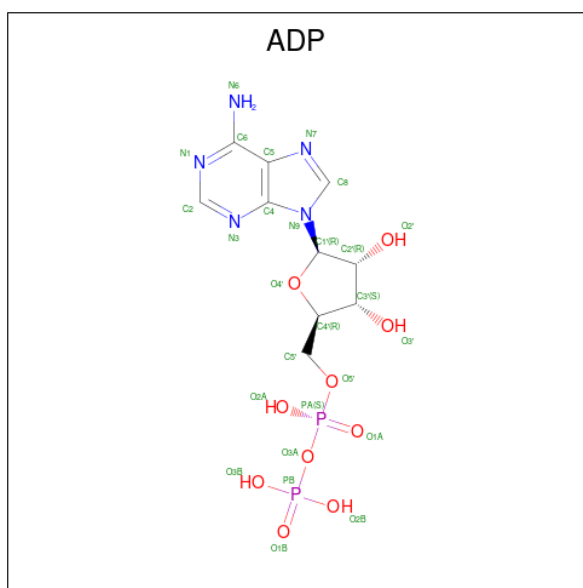
- Molecule 3 is a protein called F-actin-capping protein subunit beta.

Mol	Chain	Residues	Atoms					AltConf	Trace
3	Z	270	Total	C	N	O	S	0	0
			2131	1328	372	420	11		

- Molecule 4 is a protein called Cofilin-2.

Mol	Chain	Residues	Atoms					AltConf	Trace
4	a	166	Total	C	N	O	S	0	0
			1317	840	217	255	5		
4	b	166	Total	C	N	O	S	0	0
			1317	840	217	255	5		
4	c	166	Total	C	N	O	S	0	0
			1317	840	217	255	5		

- Molecule 5 is ADENOSINE-5'-DIPHOSPHATE (CCD ID: ADP) (formula: $C_{10}H_{15}N_5O_{10}P_2$).



Mol	Chain	Residues	Atoms					AltConf
5	A	1	Total	C	N	O	P	0
			27	10	5	10	2	
5	B	1	Total	C	N	O	P	0
			27	10	5	10	2	
5	C	1	Total	C	N	O	P	0
			27	10	5	10	2	
5	D	1	Total	C	N	O	P	0
			27	10	5	10	2	
5	E	1	Total	C	N	O	P	0
			27	10	5	10	2	

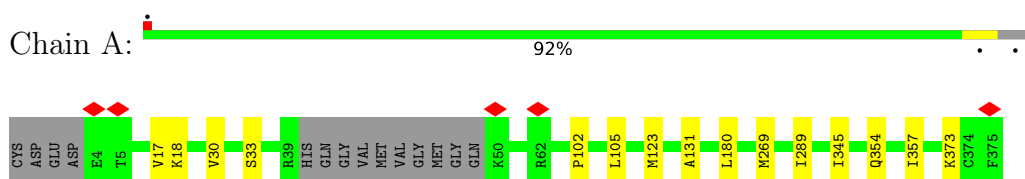
- Molecule 6 is MAGNESIUM ION (CCD ID: MG) (formula: Mg).

Mol	Chain	Residues	Atoms		AltConf
6	A	1	Total	Mg	0
			1	1	
6	B	1	Total	Mg	0
			1	1	
6	C	1	Total	Mg	0
			1	1	
6	D	1	Total	Mg	0
			1	1	
6	E	1	Total	Mg	0
			1	1	

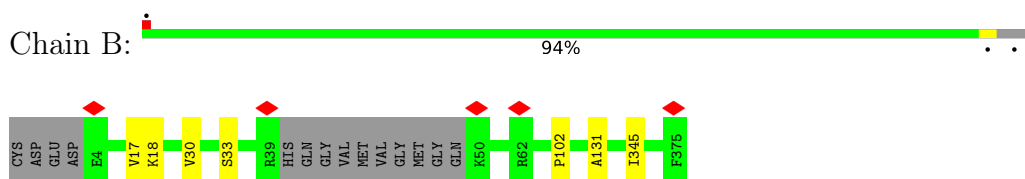
3 Residue-property plots [i](#)

These plots are drawn for all protein, RNA, DNA and oligosaccharide chains in the entry. The first graphic for a chain summarises the proportions of the various outlier classes displayed in the second graphic. The second graphic shows the sequence view annotated by issues in geometry and atom inclusion in map density. Residues are color-coded according to the number of geometric quality criteria for which they contain at least one outlier: green = 0, yellow = 1, orange = 2 and red = 3 or more. A red diamond above a residue indicates a poor fit to the EM map for this residue (all-atom inclusion < 40%). Stretches of 2 or more consecutive residues without any outlier are shown as a green connector. Residues present in the sample, but not in the model, are shown in grey.

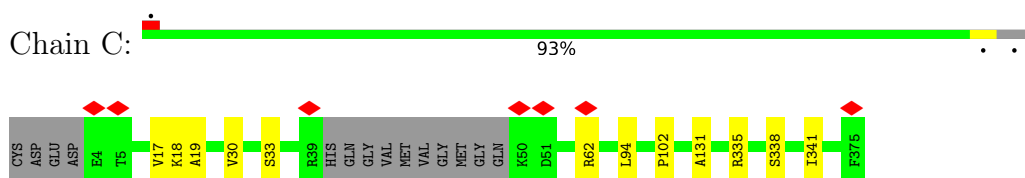
- Molecule 1: Actin, alpha skeletal muscle



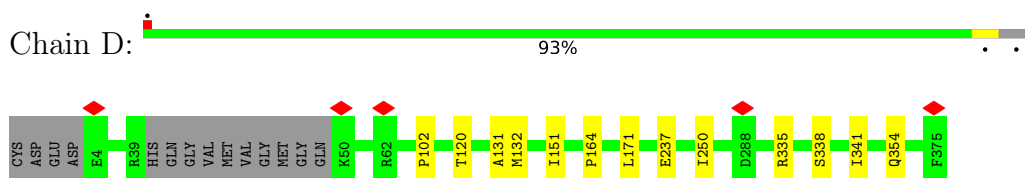
- Molecule 1: Actin, alpha skeletal muscle



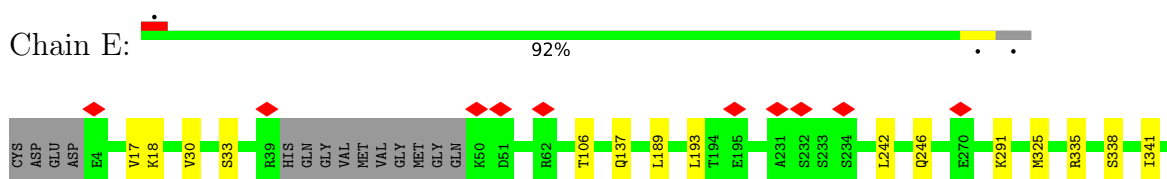
- Molecule 1: Actin, alpha skeletal muscle



- Molecule 1: Actin, alpha skeletal muscle

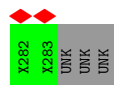
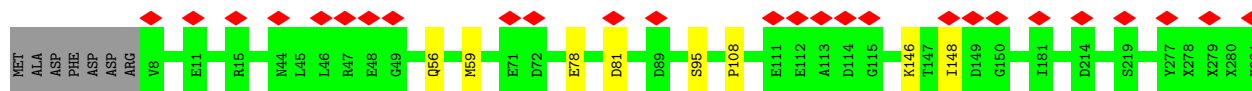


- Molecule 1: Actin, alpha skeletal muscle

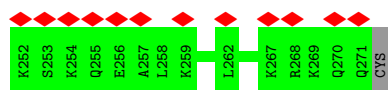
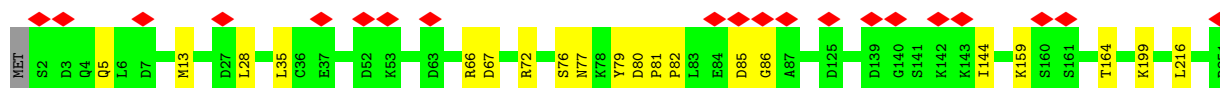
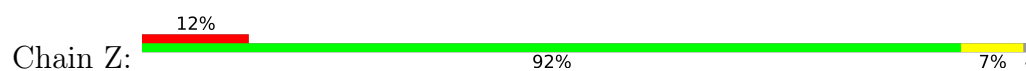




- Molecule 2: F-actin-capping protein subunit alpha-1



- Molecule 3: F-actin-capping protein subunit beta



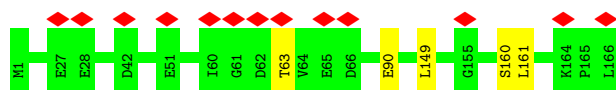
- Molecule 4: Cofilin-2



- Molecule 4: Cofilin-2



- Molecule 4: Cofilin-2



4 Experimental information

Property	Value	Source
EM reconstruction method	SINGLE PARTICLE	Depositor
Imposed symmetry	POINT, Not provided	
Number of particles used	79486	Depositor
Resolution determination method	FSC 0.143 CUT-OFF	Depositor
CTF correction method	PHASE FLIPPING AND AMPLITUDE CORRECTION	Depositor
Microscope	TFS KRIOS	Depositor
Voltage (kV)	300	Depositor
Electron dose ($e^-/\text{\AA}^2$)	50	Depositor
Minimum defocus (nm)	500	Depositor
Maximum defocus (nm)	2500	Depositor
Magnification	89000	Depositor
Image detector	GATAN K3 (6k x 4k)	Depositor
Maximum map value	0.338	Depositor
Minimum map value	-0.081	Depositor
Average map value	0.003	Depositor
Map value standard deviation	0.011	Depositor
Recommended contour level	0.0745	Depositor
Map size (Å)	345.6, 345.6, 345.6	wwPDB
Map dimensions	640, 640, 640	wwPDB
Map angles (°)	90.0, 90.0, 90.0	wwPDB
Pixel spacing (Å)	0.54, 0.54, 0.54	Depositor

5 Model quality

5.1 Standard geometry

Bond lengths and bond angles in the following residue types are not validated in this section: HIC, ADP, MG

The Z score for a bond length (or angle) is the number of standard deviations the observed value is removed from the expected value. A bond length (or angle) with $|Z| > 5$ is considered an outlier worth inspection. RMSZ is the root-mean-square of all Z scores of the bond lengths (or angles).

Mol	Chain	Bond lengths		Bond angles	
		RMSZ	$\# Z > 5$	RMSZ	$\# Z > 5$
1	A	0.25	0/2898	0.57	1/3924 (0.0%)
1	B	0.24	0/2898	0.56	0/3924
1	C	0.25	0/2887	0.59	0/3909
1	D	0.30	0/2887	0.69	1/3909 (0.0%)
1	E	0.29	0/2887	0.68	0/3909
2	Y	0.34	0/2246	0.77	0/3044
3	Z	0.32	0/2165	0.75	7/2918 (0.2%)
4	a	0.26	0/1337	0.58	0/1795
4	b	0.25	0/1337	0.55	0/1795
4	c	0.27	0/1337	0.61	1/1795 (0.1%)
All	All	0.28	0/22879	0.64	10/30922 (0.0%)

Chiral center outliers are detected by calculating the chiral volume of a chiral center and verifying if the center is modelled as a planar moiety or with the opposite hand. A planarity outlier is detected by checking planarity of atoms in a peptide group, atoms in a mainchain group or atoms of a sidechain that are expected to be planar.

Mol	Chain	#Chirality outliers	#Planarity outliers
3	Z	0	1

There are no bond length outliers.

All (10) bond angle outliers are listed below:

Mol	Chain	Res	Type	Atoms	Z	Observed(°)	Ideal(°)
3	Z	66	ARG	CA-C-N	6.49	133.93	121.54
3	Z	66	ARG	C-N-CA	6.49	133.93	121.54
3	Z	76	SER	CA-C-N	6.17	133.33	121.54
3	Z	76	SER	C-N-CA	6.17	133.33	121.54
4	c	63	THR	N-CA-CB	-5.55	107.84	114.17
3	Z	144	ILE	N-CA-C	-5.34	107.27	112.29

Continued on next page...

Continued from previous page...

Mol	Chain	Res	Type	Atoms	Z	Observed(°)	Ideal(°)
3	Z	67	ASP	CA-CB-CG	5.28	117.88	112.60
1	D	354	GLN	CA-CB-CG	5.26	124.61	114.10
3	Z	82	PRO	N-CA-C	5.18	119.45	111.21
1	A	354	GLN	CA-CB-CG	5.13	124.35	114.10

There are no chirality outliers.

All (1) planarity outliers are listed below:

Mol	Chain	Res	Type	Group
3	Z	80	ASP	Peptide

5.2 Too-close contacts

In the following table, the Non-H and H(model) columns list the number of non-hydrogen atoms and hydrogen atoms in the chain respectively. The H(added) column lists the number of hydrogen atoms added and optimized by MolProbity. The Clashes column lists the number of clashes within the asymmetric unit, whereas Symm-Clashes lists symmetry-related clashes.

Mol	Chain	Non-H	H(model)	H(added)	Clashes	Symm-Clashes
1	A	2846	0	2816	8	0
1	B	2846	0	2816	4	0
1	C	2839	0	2809	7	0
1	D	2839	0	2809	8	0
1	E	2839	0	2809	8	0
2	Y	2224	0	2117	5	0
3	Z	2131	0	2121	6	0
4	a	1317	0	1358	4	0
4	b	1317	0	1358	3	0
4	c	1317	0	1358	2	0
5	A	27	0	12	0	0
5	B	27	0	12	0	0
5	C	27	0	12	0	0
5	D	27	0	12	0	0
5	E	27	0	12	0	0
6	A	1	0	0	0	0
6	B	1	0	0	0	0
6	C	1	0	0	0	0
6	D	1	0	0	0	0
6	E	1	0	0	0	0
All	All	22655	0	22431	52	0

The all-atom clashscore is defined as the number of clashes found per 1000 atoms (including hydrogen atoms). The all-atom clashscore for this structure is 1.

All (52) close contacts within the same asymmetric unit are listed below, sorted by their clash magnitude.

Atom-1	Atom-2	Interatomic distance (Å)	Clash overlap (Å)
4:a:90:GLU:HB2	4:a:160:SER:HB3	1.85	0.58
1:B:102:PRO:HB3	1:B:131:ALA:HB3	1.87	0.56
4:b:90:GLU:HB2	4:b:160:SER:HB3	1.89	0.55
1:D:164:PRO:HB2	1:D:171:LEU:HD12	1.89	0.54
4:c:90:GLU:HB2	4:c:160:SER:HB3	1.90	0.53
1:D:120:THR:HG23	1:D:132:MET:HE1	1.92	0.52
1:C:102:PRO:HB3	1:C:131:ALA:HB3	1.92	0.50
1:E:18:LYS:HG3	1:E:30:VAL:HG22	1.94	0.49
1:E:338:SER:HA	1:E:341:ILE:HD12	1.95	0.49
3:Z:72:ARG:HD3	3:Z:79:TYR:HE1	1.77	0.49
1:A:17:VAL:HG23	1:A:33:SER:HB3	1.94	0.49
1:D:335:ARG:HA	1:D:338:SER:HB3	1.95	0.49
2:Y:59:MET:HE3	2:Y:78:GLU:HA	1.95	0.48
1:A:180:LEU:HB2	1:A:269:MET:HE1	1.96	0.48
1:C:17:VAL:HG23	1:C:33:SER:HB3	1.94	0.48
1:D:237:GLU:HA	1:D:250:ILE:O	2.14	0.48
1:E:335:ARG:HA	1:E:338:SER:HB3	1.96	0.47
3:Z:159:LYS:HG3	3:Z:164:THR:HG23	1.97	0.47
1:D:338:SER:HA	1:D:341:ILE:HD12	1.96	0.47
1:A:102:PRO:HB3	1:A:131:ALA:HB3	1.97	0.47
1:E:242:LEU:HD12	1:E:246:GLN:HB2	1.97	0.47
1:C:335:ARG:HA	1:C:338:SER:HB3	1.97	0.47
1:A:18:LYS:HG3	1:A:30:VAL:HG22	1.97	0.47
1:E:17:VAL:HG23	1:E:33:SER:HB3	1.97	0.47
2:Y:59:MET:HE1	2:Y:81:ASP:HB2	1.96	0.46
1:E:291:LYS:HD3	1:E:325:MET:HE1	1.97	0.46
1:A:357:ILE:HG12	1:A:373:LYS:HD3	1.98	0.46
1:D:102:PRO:HB3	1:D:131:ALA:HB3	1.98	0.45
3:Z:79:TYR:HE2	3:Z:86:GLY:HA3	1.81	0.45
1:C:338:SER:HA	1:C:341:ILE:HD12	1.99	0.45
1:D:151:ILE:HD12	1:D:164:PRO:HG3	1.99	0.45
3:Z:199:LYS:HD3	3:Z:216:LEU:HD11	1.98	0.45
1:A:289:ILE:HD13	1:C:62:ARG:HH22	1.81	0.45
1:B:17:VAL:HG23	1:B:33:SER:HB3	1.97	0.44
4:a:83:ALA:HB3	4:a:102:ILE:HB	1.99	0.44
1:A:345:ILE:HD13	4:a:112:LYS:HA	2.00	0.44
1:C:18:LYS:HG3	1:C:30:VAL:HG22	2.00	0.44

Continued on next page...

Continued from previous page...

Atom-1	Atom-2	Interatomic distance (Å)	Clash overlap (Å)
1:D:132:MET:HE3	1:D:132:MET:HB3	1.86	0.44
1:B:18:LYS:HG3	1:B:30:VAL:HG22	2.00	0.43
1:A:105:LEU:HD11	1:A:123:MET:HE3	2.01	0.42
1:E:189:LEU:O	1:E:193:LEU:HB2	2.19	0.42
4:a:149:LEU:HD23	4:a:161:LEU:HD21	2.02	0.42
1:B:345:ILE:HD13	4:b:112:LYS:HA	2.02	0.42
2:Y:56:GLN:HA	2:Y:59:MET:HB2	2.01	0.42
4:c:149:LEU:HD23	4:c:161:LEU:HD21	2.01	0.42
1:E:106:THR:HB	1:E:137:GLN:HG3	2.02	0.42
2:Y:146:LYS:HE2	2:Y:148:ILE:HD11	2.02	0.42
3:Z:13:MET:HE3	3:Z:28:LEU:HD22	2.02	0.42
2:Y:95:SER:O	2:Y:108:PRO:HA	2.20	0.41
3:Z:5:GLN:HB3	3:Z:35:LEU:HD11	2.03	0.41
4:b:103:PHE:HE1	4:b:117:TYR:HB3	1.85	0.41
1:C:19:ALA:HB1	1:C:94:LEU:HD11	2.03	0.41

There are no symmetry-related clashes.

5.3 Torsion angles [i](#)

5.3.1 Protein backbone [i](#)

In the following table, the Percentiles column shows the percent Ramachandran outliers of the chain as a percentile score with respect to all PDB entries followed by that with respect to all EM entries.

The Analysed column shows the number of residues for which the backbone conformation was analysed, and the total number of residues.

Mol	Chain	Analysed	Favoured	Allowed	Outliers	Percentiles	
1	A	358/376 (95%)	351 (98%)	7 (2%)	0	100	100
1	B	358/376 (95%)	348 (97%)	10 (3%)	0	100	100
1	C	357/376 (95%)	351 (98%)	6 (2%)	0	100	100
1	D	357/376 (95%)	344 (96%)	13 (4%)	0	100	100
1	E	357/376 (95%)	346 (97%)	11 (3%)	0	100	100
2	Y	269/286 (94%)	259 (96%)	10 (4%)	0	100	100
3	Z	268/272 (98%)	247 (92%)	18 (7%)	3 (1%)	11	34
4	a	164/166 (99%)	154 (94%)	10 (6%)	0	100	100

Continued on next page...

Continued from previous page...

Mol	Chain	Analysed	Favoured	Allowed	Outliers	Percentiles	
4	b	164/166 (99%)	154 (94%)	10 (6%)	0	100	100
4	c	164/166 (99%)	155 (94%)	9 (6%)	0	100	100
All	All	2816/2936 (96%)	2709 (96%)	104 (4%)	3 (0%)	49	75

All (3) Ramachandran outliers are listed below:

Mol	Chain	Res	Type
3	Z	77	ASN
3	Z	81	PRO
3	Z	85	ASP

5.3.2 Protein sidechains ⓘ

In the following table, the Percentiles column shows the percent sidechain outliers of the chain as a percentile score with respect to all PDB entries followed by that with respect to all EM entries.

The Analysed column shows the number of residues for which the sidechain conformation was analysed, and the total number of residues.

Mol	Chain	Analysed	Rotameric	Outliers	Percentiles	
1	A	308/318 (97%)	308 (100%)	0	100	100
1	B	308/318 (97%)	308 (100%)	0	100	100
1	C	307/318 (96%)	307 (100%)	0	100	100
1	D	307/318 (96%)	307 (100%)	0	100	100
1	E	307/318 (96%)	307 (100%)	0	100	100
2	Y	239/245 (98%)	239 (100%)	0	100	100
3	Z	239/241 (99%)	239 (100%)	0	100	100
4	a	148/148 (100%)	148 (100%)	0	100	100
4	b	148/148 (100%)	148 (100%)	0	100	100
4	c	148/148 (100%)	148 (100%)	0	100	100
All	All	2459/2520 (98%)	2459 (100%)	0	100	100

There are no protein residues with a non-rotameric sidechain to report.

Sometimes sidechains can be flipped to improve hydrogen bonding and reduce clashes. All (26) such sidechains are listed below:

Mol	Chain	Res	Type
1	A	246	GLN
1	A	275	HIS
1	B	59	GLN
1	B	246	GLN
1	B	275	HIS
1	B	360	GLN
1	C	128	ASN
1	C	275	HIS
1	D	78	ASN
1	D	121	GLN
1	D	137	GLN
1	D	161	HIS
1	D	162	ASN
1	D	246	GLN
1	D	252	ASN
1	E	92	ASN
1	E	128	ASN
2	Y	23	HIS
2	Y	162	GLN
2	Y	187	GLN
3	Z	20	GLN
3	Z	229	ASN
4	a	54	GLN
4	a	138	ASN
4	b	133	HIS
4	c	26	GLN

5.3.3 RNA ⓘ

There are no RNA molecules in this entry.

5.4 Non-standard residues in protein, DNA, RNA chains ⓘ

5 non-standard protein/DNA/RNA residues are modelled in this entry.

In the following table, the Counts columns list the number of bonds (or angles) for which Mogul statistics could be retrieved, the number of bonds (or angles) that are observed in the model and the number of bonds (or angles) that are defined in the Chemical Component Dictionary. The Link column lists molecule types, if any, to which the group is linked. The Z score for a bond length (or angle) is the number of standard deviations the observed value is removed from the expected value. A bond length (or angle) with $|Z| > 2$ is considered an outlier worth inspection. RMSZ is the root-mean-square of all Z scores of the bond lengths (or angles).

Mol	Type	Chain	Res	Link	Bond lengths			Bond angles		
					Counts	RMSZ	# Z > 2	Counts	RMSZ	# Z > 2
1	HIC	C	73	1	10,11,12	0.50	0	9,14,16	0.56	0
1	HIC	B	73	1	10,11,12	0.51	0	9,14,16	0.56	0
1	HIC	D	73	1	10,11,12	0.51	0	9,14,16	0.59	0
1	HIC	A	73	1	10,11,12	0.50	0	9,14,16	0.57	0
1	HIC	E	73	1	10,11,12	0.50	0	9,14,16	0.60	0

In the following table, the Chirals column lists the number of chiral outliers, the number of chiral centers analysed, the number of these observed in the model and the number defined in the Chemical Component Dictionary. Similar counts are reported in the Torsion and Rings columns. '-' means no outliers of that kind were identified.

Mol	Type	Chain	Res	Link	Chirals	Torsions	Rings
1	HIC	C	73	1	-	2/5/6/8	0/1/1/1
1	HIC	B	73	1	-	2/5/6/8	0/1/1/1
1	HIC	D	73	1	-	2/5/6/8	0/1/1/1
1	HIC	A	73	1	-	2/5/6/8	0/1/1/1
1	HIC	E	73	1	-	4/5/6/8	0/1/1/1

There are no bond length outliers.

There are no bond angle outliers.

There are no chirality outliers.

All (12) torsion outliers are listed below:

Mol	Chain	Res	Type	Atoms
1	E	73	HIC	O-C-CA-CB
1	D	73	HIC	CA-CB-CG-ND1
1	D	73	HIC	CA-CB-CG-CD2
1	E	73	HIC	CA-CB-CG-ND1
1	E	73	HIC	C-CA-CB-CG
1	A	73	HIC	CA-CB-CG-CD2
1	B	73	HIC	CA-CB-CG-CD2
1	C	73	HIC	CA-CB-CG-CD2
1	A	73	HIC	CA-CB-CG-ND1
1	B	73	HIC	CA-CB-CG-ND1
1	C	73	HIC	CA-CB-CG-ND1
1	E	73	HIC	CA-CB-CG-CD2

There are no ring outliers.

No monomer is involved in short contacts.

5.5 Carbohydrates [i](#)

There are no oligosaccharides in this entry.

5.6 Ligand geometry [i](#)

Of 10 ligands modelled in this entry, 5 are monoatomic - leaving 5 for Mogul analysis.

In the following table, the Counts columns list the number of bonds (or angles) for which Mogul statistics could be retrieved, the number of bonds (or angles) that are observed in the model and the number of bonds (or angles) that are defined in the Chemical Component Dictionary. The Link column lists molecule types, if any, to which the group is linked. The Z score for a bond length (or angle) is the number of standard deviations the observed value is removed from the expected value. A bond length (or angle) with $|Z| > 2$ is considered an outlier worth inspection. RMSZ is the root-mean-square of all Z scores of the bond lengths (or angles).

Mol	Type	Chain	Res	Link	Bond lengths			Bond angles		
					Counts	RMSZ	$\# Z > 2$	Counts	RMSZ	$\# Z > 2$
5	ADP	C	400	6	28,29,29	1.39	4 (14%)	43,45,45	1.85	9 (20%)
5	ADP	B	400	6	28,29,29	1.39	5 (17%)	43,45,45	1.84	9 (20%)
5	ADP	A	400	6	28,29,29	1.39	4 (14%)	43,45,45	1.83	9 (20%)
5	ADP	E	400	6	28,29,29	1.38	4 (14%)	43,45,45	1.84	9 (20%)
5	ADP	D	400	6	28,29,29	1.39	4 (14%)	43,45,45	1.86	9 (20%)

In the following table, the Chirals column lists the number of chiral outliers, the number of chiral centers analysed, the number of these observed in the model and the number defined in the Chemical Component Dictionary. Similar counts are reported in the Torsion and Rings columns. '-' means no outliers of that kind were identified.

Mol	Type	Chain	Res	Link	Chirals	Torsions	Rings
5	ADP	C	400	6	-	3/16/32/32	0/3/3/3
5	ADP	B	400	6	-	3/16/32/32	0/3/3/3
5	ADP	A	400	6	-	3/16/32/32	0/3/3/3
5	ADP	E	400	6	-	3/16/32/32	0/3/3/3
5	ADP	D	400	6	-	3/16/32/32	0/3/3/3

All (21) bond length outliers are listed below:

Mol	Chain	Res	Type	Atoms	Z	Observed(Å)	Ideal(Å)
5	A	400	ADP	C5-C4	4.56	1.47	1.39
5	B	400	ADP	C5-C4	4.55	1.47	1.39
5	D	400	ADP	C5-C4	4.53	1.47	1.39

Continued on next page...

Continued from previous page...

Mol	Chain	Res	Type	Atoms	Z	Observed(Å)	Ideal(Å)
5	C	400	ADP	C5-C4	4.50	1.47	1.39
5	E	400	ADP	C5-C4	4.49	1.47	1.39
5	E	400	ADP	C5-C6	2.65	1.48	1.41
5	B	400	ADP	C5-C6	2.64	1.48	1.41
5	A	400	ADP	C5-C6	2.63	1.48	1.41
5	D	400	ADP	C5-C6	2.62	1.48	1.41
5	C	400	ADP	C5-C6	2.62	1.48	1.41
5	C	400	ADP	C5-N7	-2.48	1.34	1.39
5	D	400	ADP	C5-N7	-2.44	1.34	1.39
5	E	400	ADP	C5-N7	-2.39	1.34	1.39
5	B	400	ADP	C5-N7	-2.31	1.34	1.39
5	A	400	ADP	C8-N7	2.31	1.36	1.31
5	E	400	ADP	C8-N7	2.29	1.36	1.31
5	A	400	ADP	C5-N7	-2.28	1.34	1.39
5	B	400	ADP	C8-N7	2.28	1.36	1.31
5	D	400	ADP	C8-N7	2.27	1.36	1.31
5	C	400	ADP	C8-N7	2.21	1.35	1.31
5	B	400	ADP	C4-N9	-2.02	1.33	1.37

All (45) bond angle outliers are listed below:

Mol	Chain	Res	Type	Atoms	Z	Observed(°)	Ideal(°)
5	C	400	ADP	C5-C4-N3	-5.83	118.68	126.72
5	D	400	ADP	C5-C4-N3	-5.76	118.78	126.72
5	B	400	ADP	C5-C4-N3	-5.68	118.89	126.72
5	E	400	ADP	C5-C4-N3	-5.64	118.95	126.72
5	A	400	ADP	C5-C4-N3	-5.60	119.01	126.72
5	D	400	ADP	N3-C4-N9	4.64	135.06	127.17
5	C	400	ADP	N3-C4-N9	4.63	135.05	127.17
5	A	400	ADP	N3-C4-N9	4.51	134.84	127.17
5	E	400	ADP	N3-C4-N9	4.51	134.83	127.17
5	B	400	ADP	N3-C4-N9	4.46	134.76	127.17
5	B	400	ADP	C2-N3-C4	3.75	121.00	111.83
5	C	400	ADP	C2-N3-C4	3.74	120.96	111.83
5	D	400	ADP	C2-N3-C4	3.73	120.94	111.83
5	A	400	ADP	C2-N3-C4	3.71	120.89	111.83
5	E	400	ADP	C2-N3-C4	3.65	120.74	111.83
5	B	400	ADP	C4-C5-N7	-3.52	106.56	110.58
5	C	400	ADP	C4-C5-N7	-3.50	106.58	110.58
5	D	400	ADP	C4-C5-N7	-3.46	106.62	110.58
5	A	400	ADP	N3-C2-N1	-3.43	123.39	128.58
5	B	400	ADP	N3-C2-N1	-3.43	123.39	128.58

Continued on next page...

Continued from previous page...

Mol	Chain	Res	Type	Atoms	Z	Observed(°)	Ideal(°)
5	E	400	ADP	C4-C5-N7	-3.39	106.71	110.58
5	D	400	ADP	N3-C2-N1	-3.37	123.48	128.58
5	A	400	ADP	C4-C5-N7	-3.35	106.75	110.58
5	C	400	ADP	N3-C2-N1	-3.34	123.53	128.58
5	E	400	ADP	N3-C2-N1	-3.30	123.58	128.58
5	D	400	ADP	C4-N9-C8	2.90	108.79	105.74
5	A	400	ADP	C4-N9-C8	2.86	108.74	105.74
5	E	400	ADP	C4-N9-C8	2.82	108.69	105.74
5	C	400	ADP	C4-N9-C8	2.75	108.62	105.74
5	B	400	ADP	C4-N9-C8	2.74	108.62	105.74
5	D	400	ADP	C5-N7-C8	2.63	107.58	103.45
5	C	400	ADP	C5-N7-C8	2.62	107.57	103.45
5	B	400	ADP	C5-N7-C8	2.54	107.44	103.45
5	E	400	ADP	C5-N7-C8	2.52	107.41	103.45
5	A	400	ADP	C5-N7-C8	2.46	107.32	103.45
5	B	400	ADP	C6-C5-N7	2.25	136.44	132.09
5	D	400	ADP	N9-C8-N7	-2.17	110.85	113.94
5	A	400	ADP	C6-C5-N7	2.17	136.27	132.09
5	D	400	ADP	C6-C5-N7	2.11	136.15	132.09
5	C	400	ADP	N9-C8-N7	-2.10	110.96	113.94
5	E	400	ADP	N9-C8-N7	-2.08	110.98	113.94
5	E	400	ADP	C6-C5-N7	2.08	136.11	132.09
5	C	400	ADP	C6-C5-N7	2.08	136.10	132.09
5	B	400	ADP	N9-C8-N7	-2.05	111.02	113.94
5	A	400	ADP	N9-C8-N7	-2.05	111.03	113.94

There are no chirality outliers.

All (15) torsion outliers are listed below:

Mol	Chain	Res	Type	Atoms
5	A	400	ADP	C5'-O5'-PA-O1A
5	A	400	ADP	C5'-O5'-PA-O2A
5	A	400	ADP	C5'-O5'-PA-O3A
5	B	400	ADP	C5'-O5'-PA-O1A
5	B	400	ADP	C5'-O5'-PA-O2A
5	B	400	ADP	C5'-O5'-PA-O3A
5	C	400	ADP	C5'-O5'-PA-O1A
5	C	400	ADP	C5'-O5'-PA-O2A
5	C	400	ADP	C5'-O5'-PA-O3A
5	D	400	ADP	C5'-O5'-PA-O1A
5	D	400	ADP	C5'-O5'-PA-O2A
5	D	400	ADP	C5'-O5'-PA-O3A

Continued on next page...

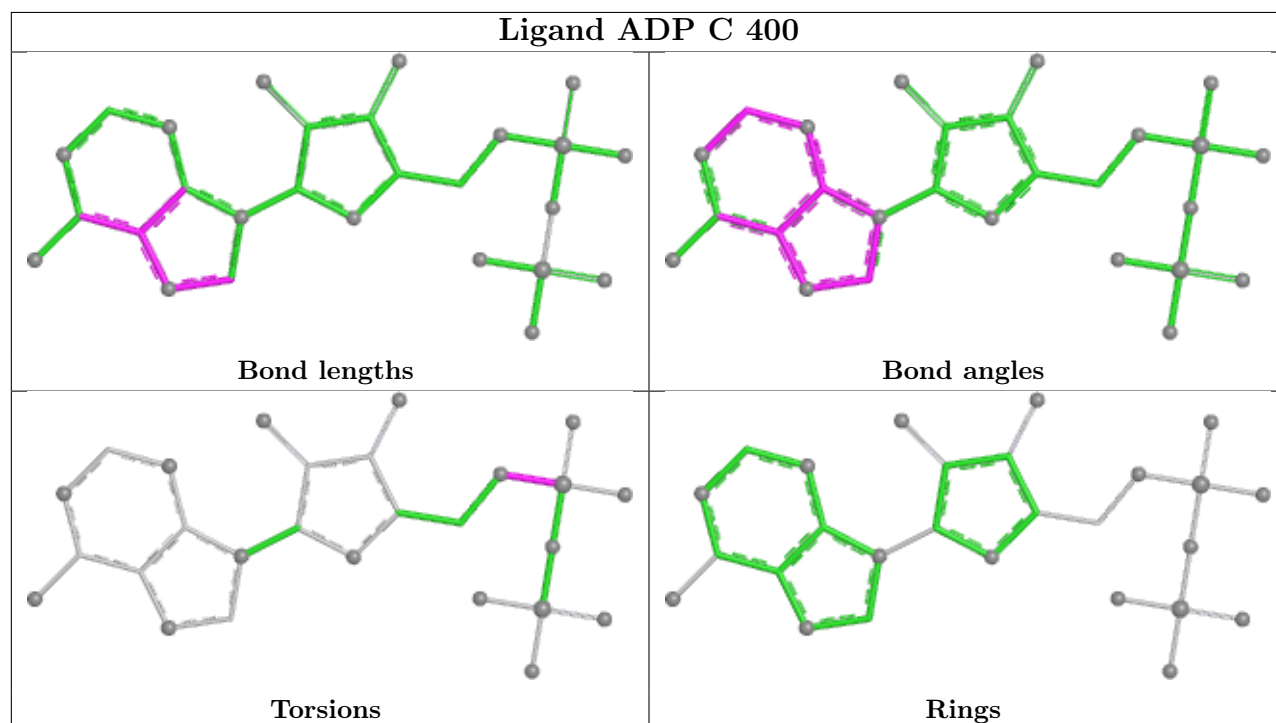
Continued from previous page...

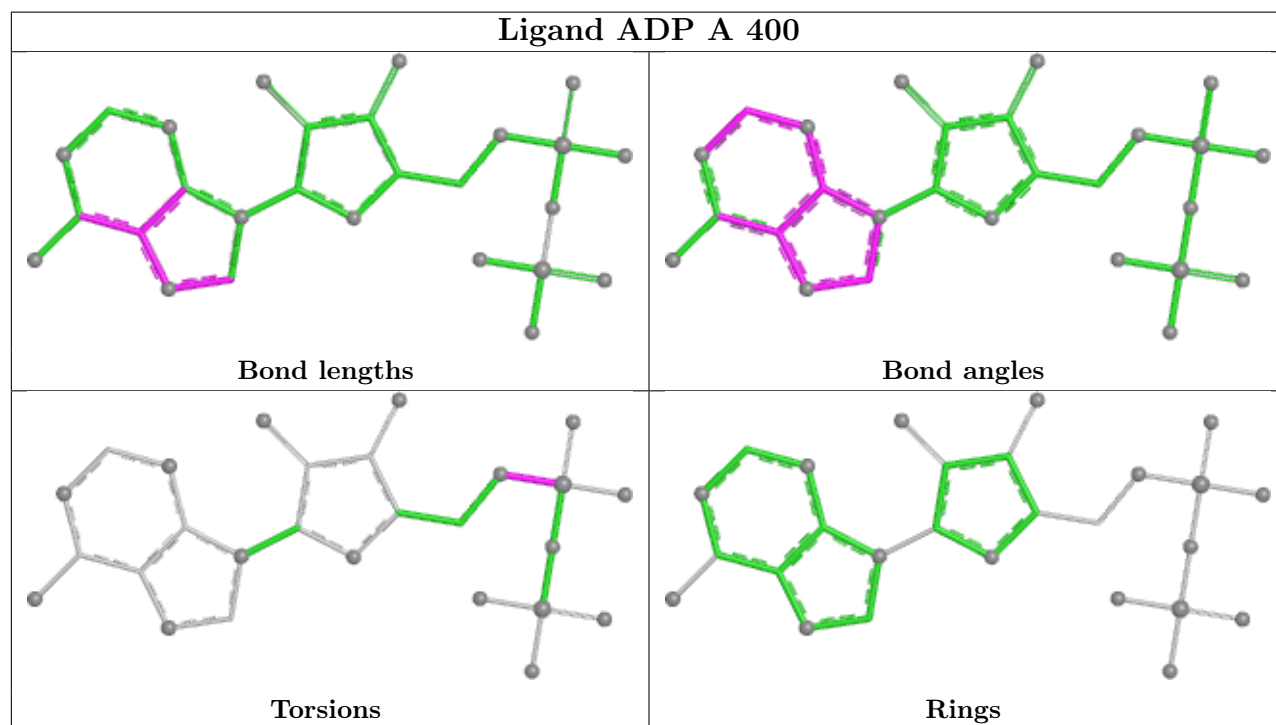
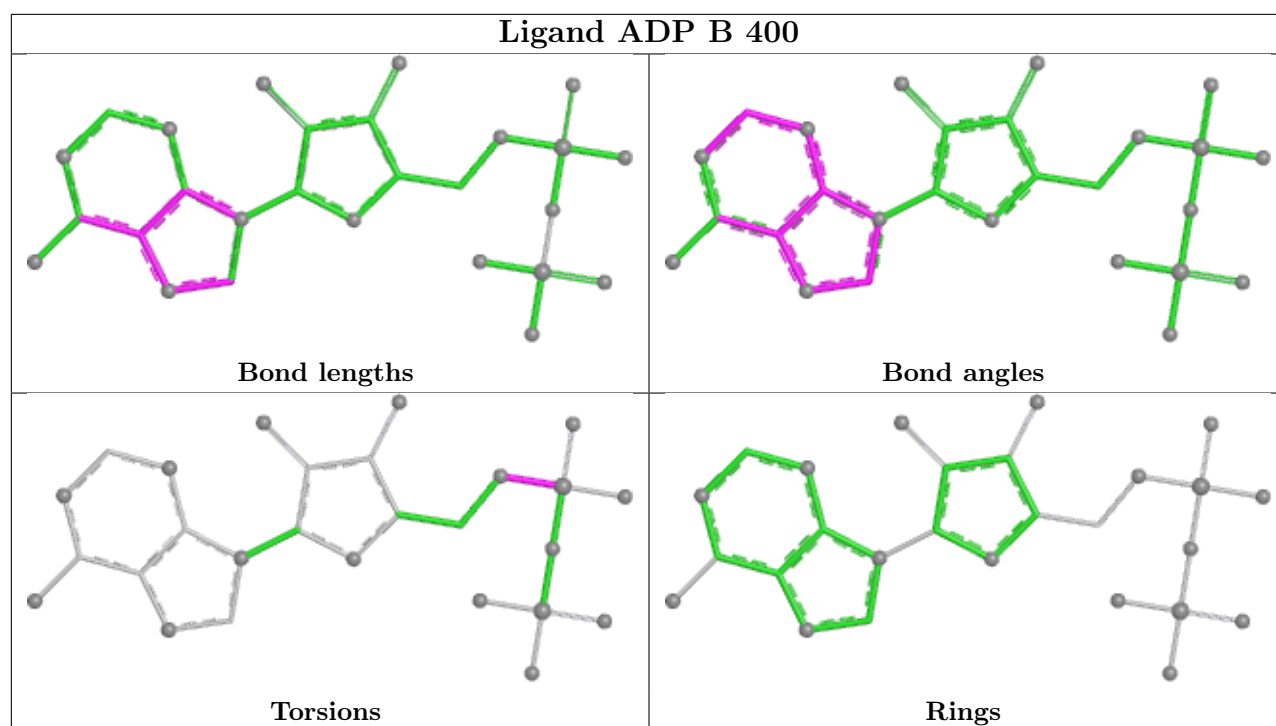
Mol	Chain	Res	Type	Atoms
5	E	400	ADP	C5'-O5'-PA-O1A
5	E	400	ADP	C5'-O5'-PA-O2A
5	E	400	ADP	C5'-O5'-PA-O3A

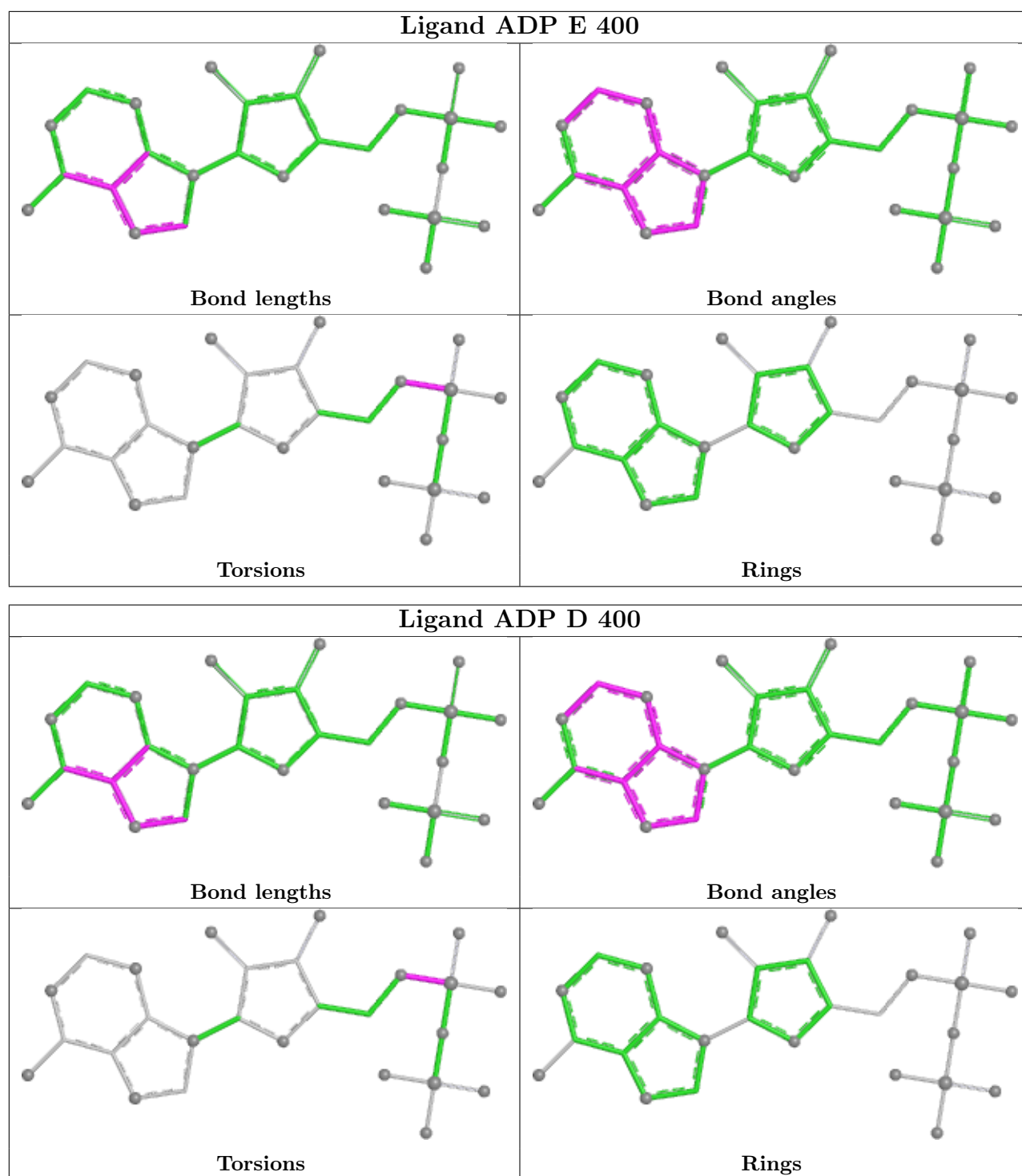
There are no ring outliers.

No monomer is involved in short contacts.

The following is a two-dimensional graphical depiction of Mogul quality analysis of bond lengths, bond angles, torsion angles, and ring geometry for all instances of the Ligand of Interest. In addition, ligands with molecular weight > 250 and outliers as shown on the validation Tables will also be included. For torsion angles, if less than 5% of the Mogul distribution of torsion angles is within 10 degrees of the torsion angle in question, then that torsion angle is considered an outlier. Any bond that is central to one or more torsion angles identified as an outlier by Mogul will be highlighted in the graph. For rings, the root-mean-square deviation (RMSD) between the ring in question and similar rings identified by Mogul is calculated over all ring torsion angles. If the average RMSD is greater than 60 degrees and the minimal RMSD between the ring in question and any Mogul-identified rings is also greater than 60 degrees, then that ring is considered an outlier. The outliers are highlighted in purple. The color gray indicates Mogul did not find sufficient equivalents in the CSD to analyse the geometry.







5.7 Other polymers ⓘ

There are no such residues in this entry.

5.8 Polymer linkage issues ⓘ

There are no chain breaks in this entry.

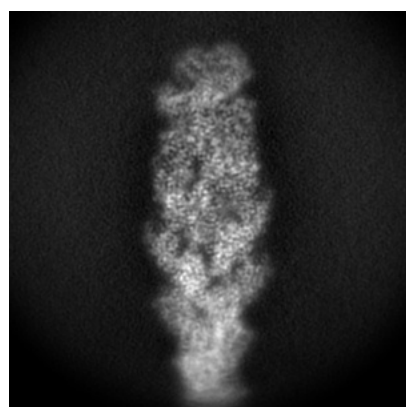
6 Map visualisation [i](#)

This section contains visualisations of the EMDB entry EMD-72711. These allow visual inspection of the internal detail of the map and identification of artifacts.

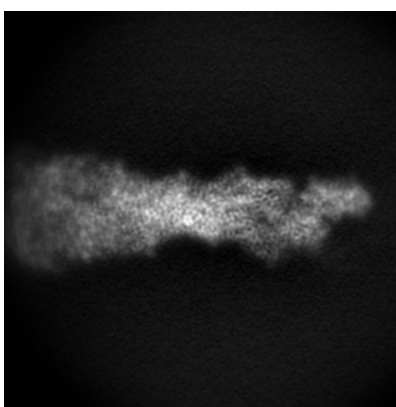
No raw map or half-maps were deposited for this entry and therefore no images, graphs, etc. pertaining to the raw map can be shown.

6.1 Orthogonal projections [i](#)

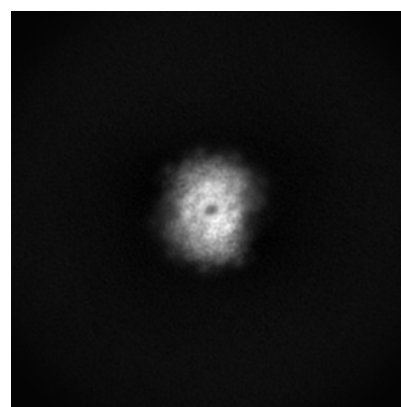
6.1.1 Primary map



X



Y

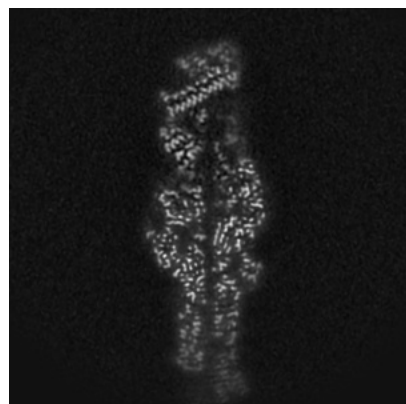


Z

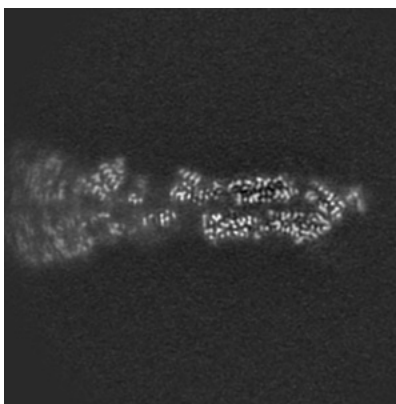
The images above show the map projected in three orthogonal directions.

6.2 Central slices [i](#)

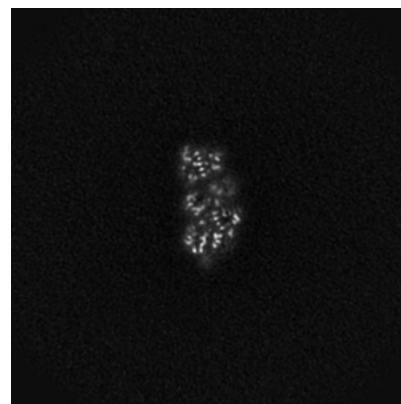
6.2.1 Primary map



X Index: 320



Y Index: 320

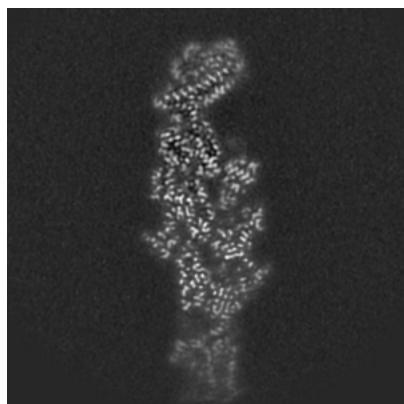


Z Index: 320

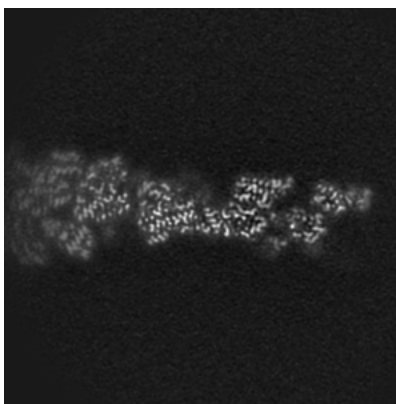
The images above show central slices of the map in three orthogonal directions.

6.3 Largest variance slices [i](#)

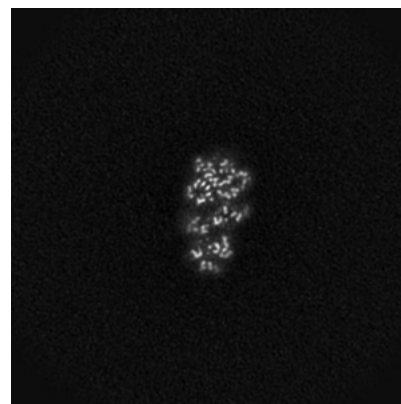
6.3.1 Primary map



X Index: 335



Y Index: 334

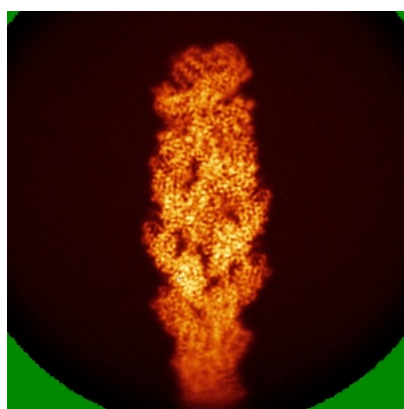


Z Index: 280

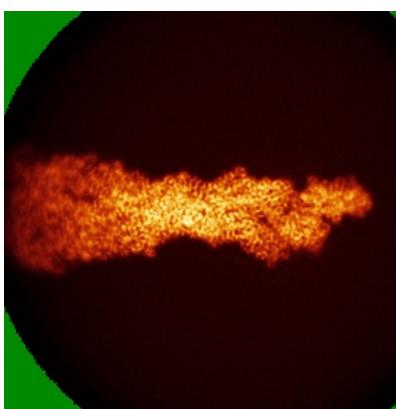
The images above show the largest variance slices of the map in three orthogonal directions.

6.4 Orthogonal standard-deviation projections (False-color) [i](#)

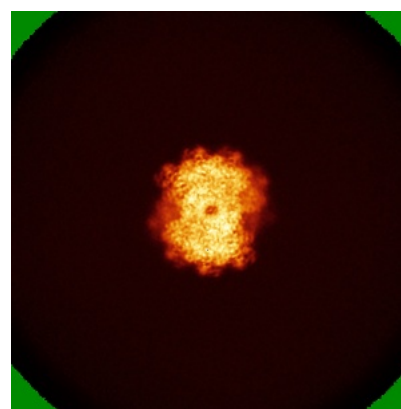
6.4.1 Primary map



X



Y

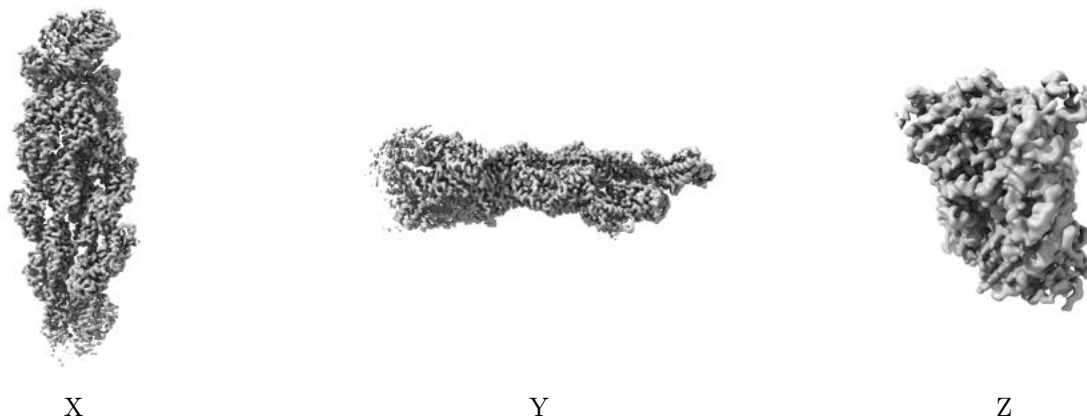


Z

The images above show the map standard deviation projections with false color in three orthogonal directions. Minimum values are shown in green, max in blue, and dark to light orange shades represent small to large values respectively.

6.5 Orthogonal surface views [i](#)

6.5.1 Primary map



The images above show the 3D surface view of the map at the recommended contour level 0.0745. These images, in conjunction with the slice images, may facilitate assessment of whether an appropriate contour level has been provided.

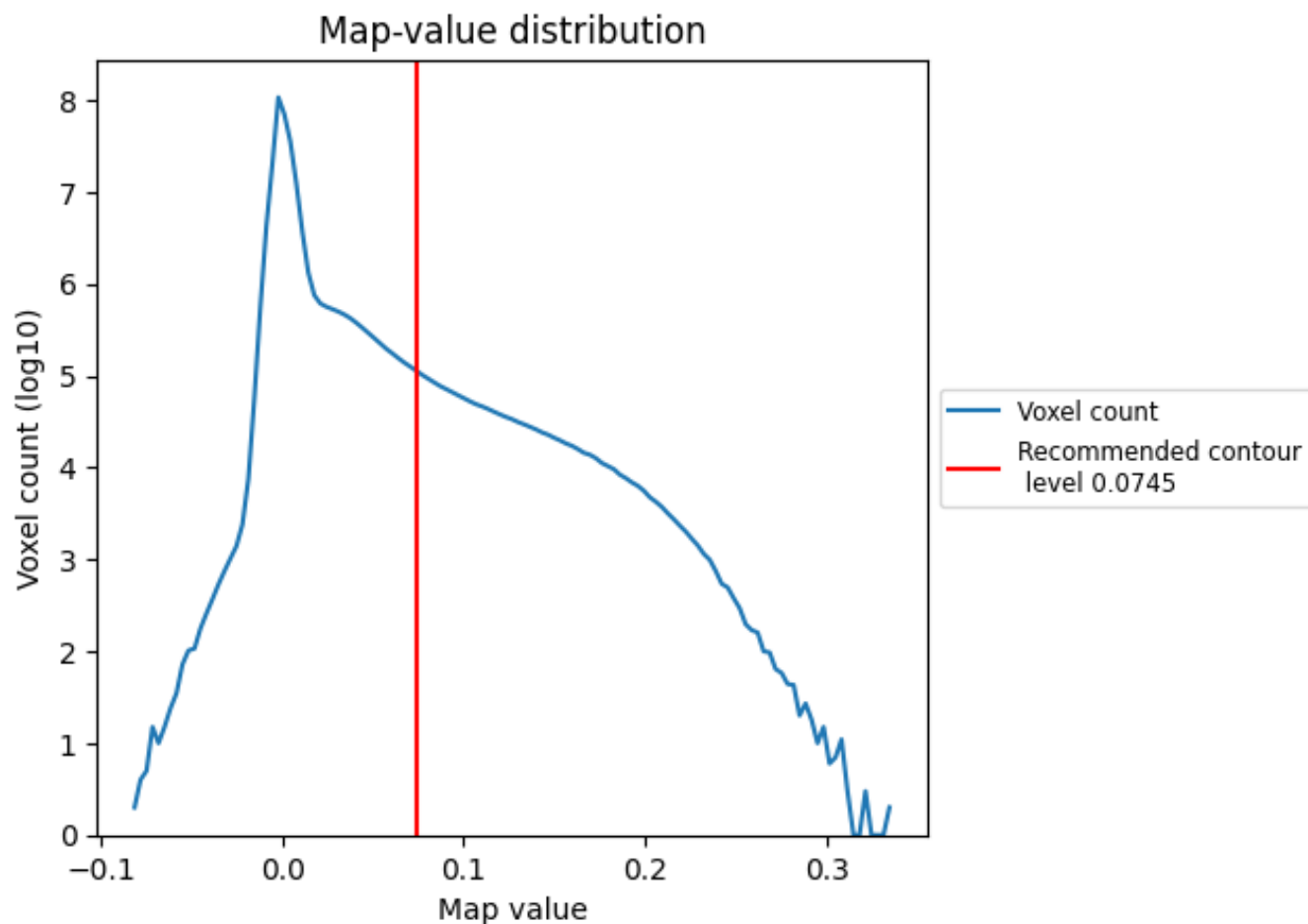
6.6 Mask visualisation [i](#)

This section was not generated. No masks/segmentation were deposited.

7 Map analysis [i](#)

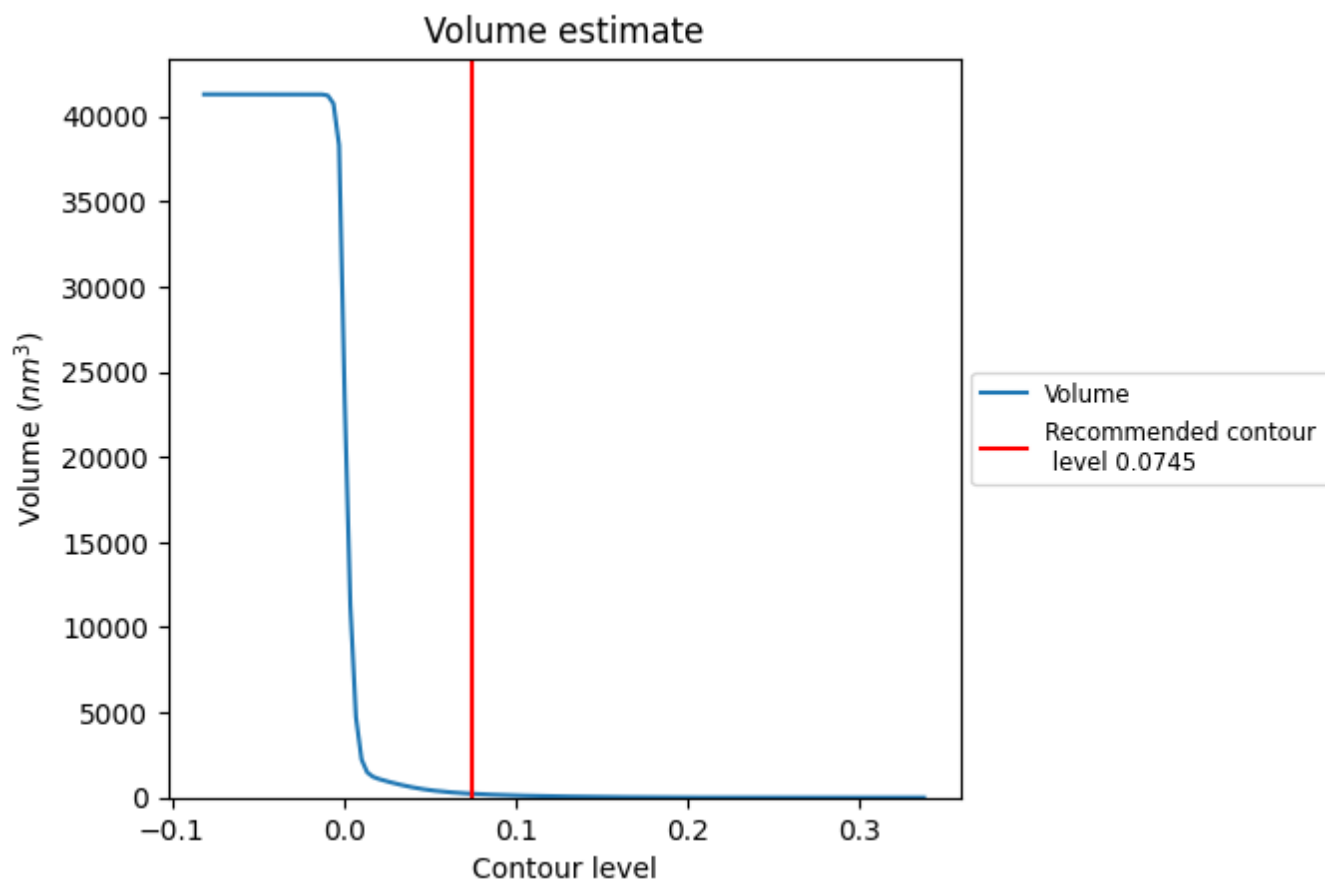
This section contains the results of statistical analysis of the map.

7.1 Map-value distribution [i](#)



The map-value distribution is plotted in 128 intervals along the x-axis. The y-axis is logarithmic. A spike in this graph at zero usually indicates that the volume has been masked.

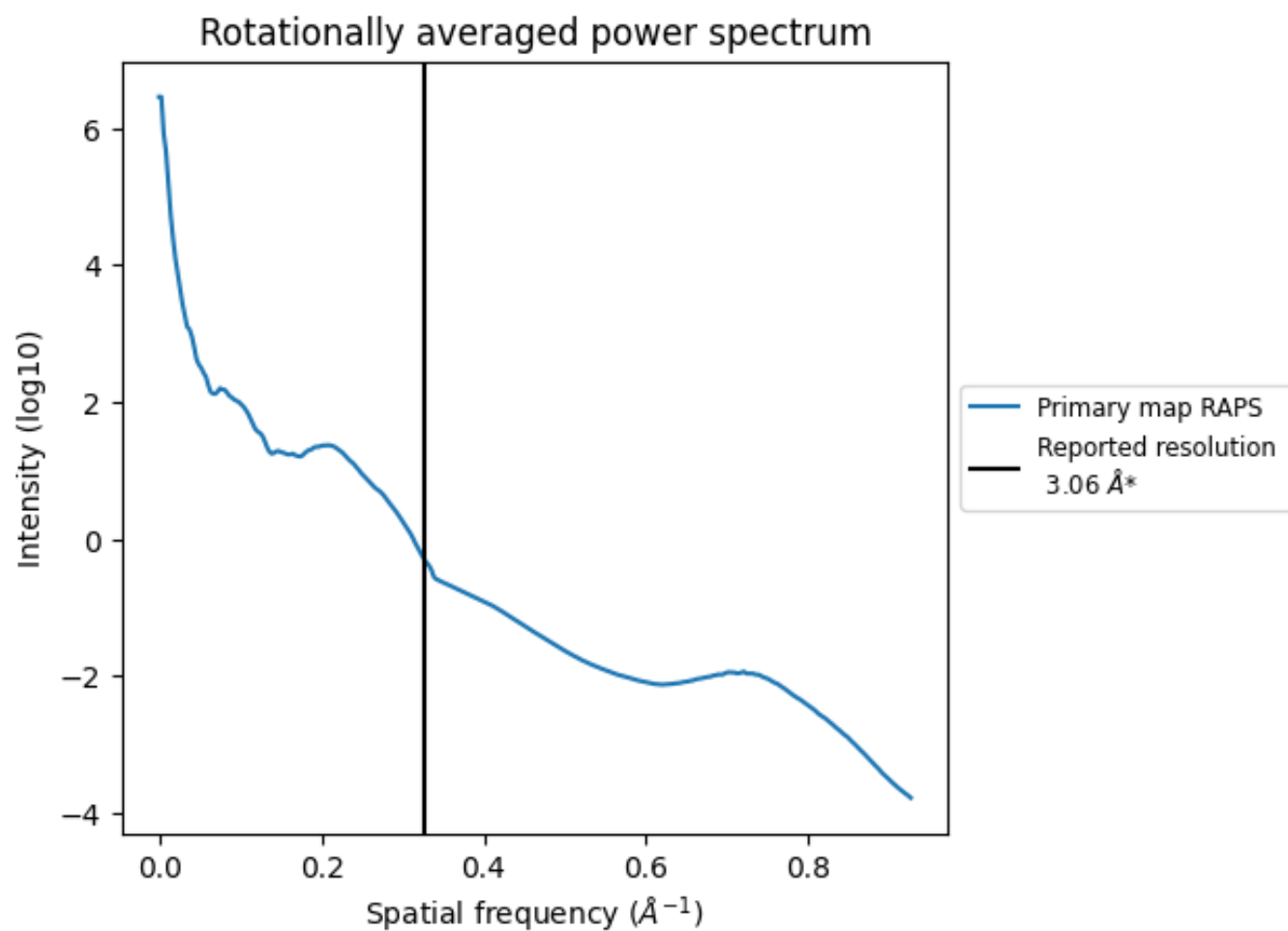
7.2 Volume estimate [i](#)



The volume at the recommended contour level is 225 nm^3 ; this corresponds to an approximate mass of 203 kDa.

The volume estimate graph shows how the enclosed volume varies with the contour level. The recommended contour level is shown as a vertical line and the intersection between the line and the curve gives the volume of the enclosed surface at the given level.

7.3 Rotationally averaged power spectrum ⓘ



*Reported resolution corresponds to spatial frequency of 0.327 Å⁻¹

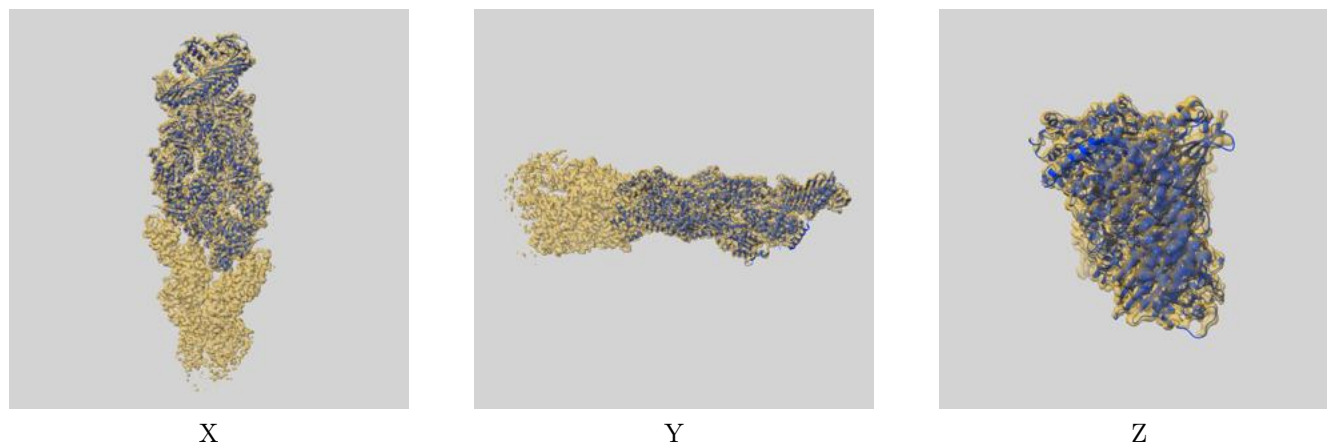
8 Fourier-Shell correlation

This section was not generated. No FSC curve or half-maps provided.

9 Map-model fit [i](#)

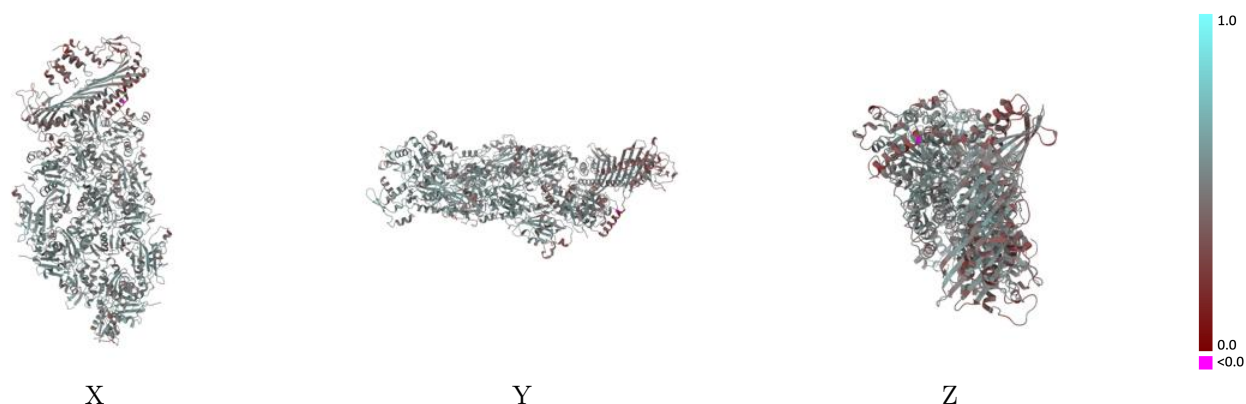
This section contains information regarding the fit between EMDB map EMD-72711 and PDB model 9Y9M. Per-residue inclusion information can be found in section 3 on page 6.

9.1 Map-model overlay [i](#)



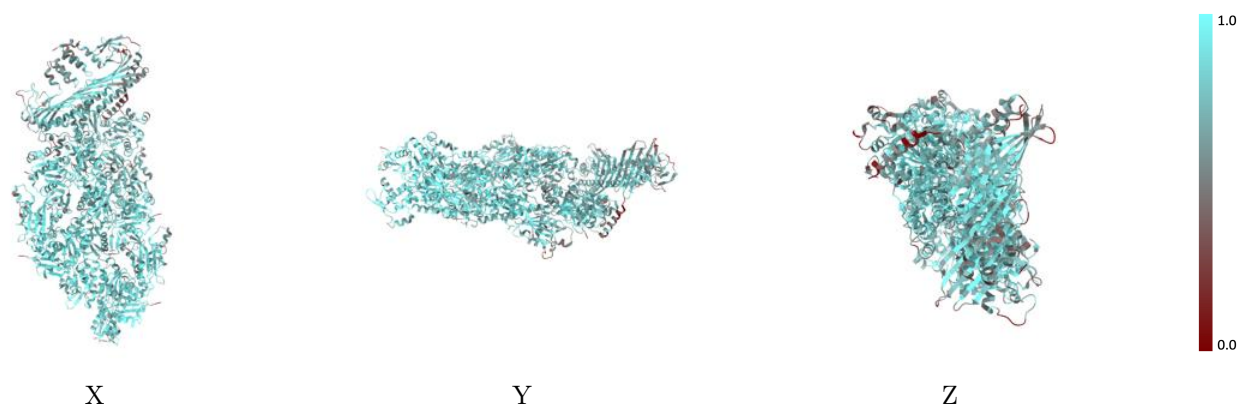
The images above show the 3D surface view of the map at the recommended contour level 0.0745 at 50% transparency in yellow overlaid with a ribbon representation of the model coloured in blue. These images allow for the visual assessment of the quality of fit between the atomic model and the map.

9.2 Q-score mapped to coordinate model [i](#)



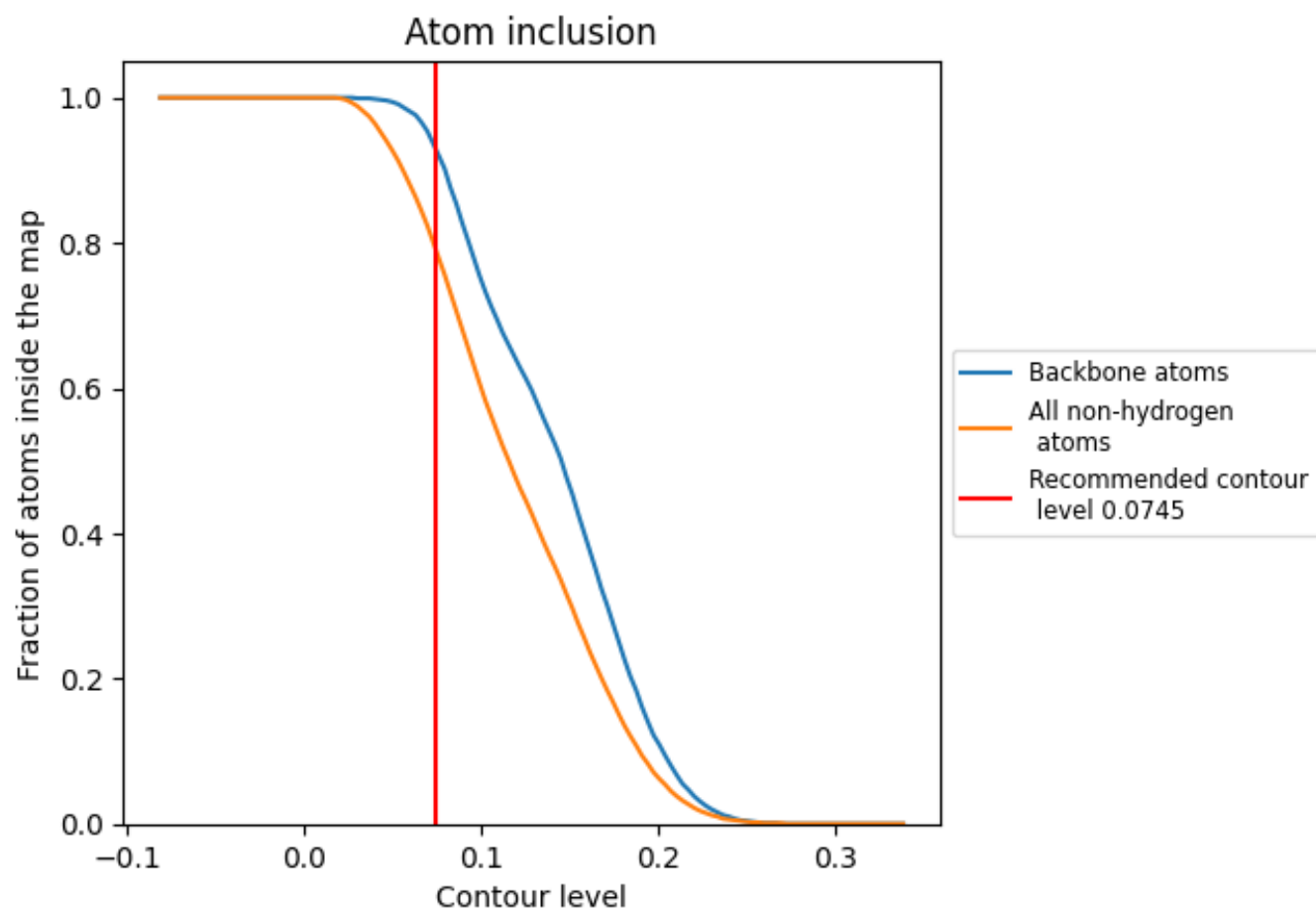
The images above show the model with each residue coloured according to its Q-score. This shows their resolvability in the map with higher Q-score values reflecting better resolvability. Please note: Q-score is calculating the resolvability of atoms, and thus high values are only expected at resolutions at which atoms can be resolved. Low Q-score values may therefore be expected for many entries.

9.3 Atom inclusion mapped to coordinate model [i](#)



The images above show the model with each residue coloured according to its atom inclusion. This shows to what extent they are inside the map at the recommended contour level (0.0745).

9.4 Atom inclusion [i](#)



At the recommended contour level, 93% of all backbone atoms, 79% of all non-hydrogen atoms, are inside the map.

9.5 Map-model fit summary ⓘ

The table lists the average atom inclusion at the recommended contour level (0.0745) and Q-score for the entire model and for each chain.

Chain	Atom inclusion	Q-score
All	<div><div></div></div> 0.7880	<div><div></div></div> 0.4940
A	<div><div></div></div> 0.8610	<div><div></div></div> 0.5210
B	<div><div></div></div> 0.8590	<div><div></div></div> 0.5220
C	<div><div></div></div> 0.8530	<div><div></div></div> 0.5270
D	<div><div></div></div> 0.8110	<div><div></div></div> 0.5060
E	<div><div></div></div> 0.7570	<div><div></div></div> 0.4850
Y	<div><div></div></div> 0.6680	<div><div></div></div> 0.4210
Z	<div><div></div></div> 0.6800	<div><div></div></div> 0.4320
a	<div><div></div></div> 0.8050	<div><div></div></div> 0.5120
b	<div><div></div></div> 0.7880	<div><div></div></div> 0.5100
c	<div><div></div></div> 0.7120	<div><div></div></div> 0.4960

1.0

0.0

<0.0