



Full wwPDB EM Validation Report ⓘ

Apr 6, 2026 – 02:59 AM UTC

PDB ID : 9W45 / pdb_00009w45
EMDB ID : EMD-65621
Title : The structure of odorant-bound mouse class II odorant receptor-miniGs complex
Authors : Choi, C.W.; Gil, M.S.; Choi, H.-J.
Deposited on : 2025-07-30
Resolution : 3.20 Å(reported)

This is a Full wwPDB EM Validation Report for a publicly released PDB entry.

We welcome your comments at validation@mail.wwpdb.org

A user guide is available at

<https://www.wwpdb.org/validation/2017/EMValidationReportHelp>
with specific help available everywhere you see the ⓘ symbol.

The types of validation reports are described at

<http://www.wwpdb.org/validation/2017/FAQs#types>.

The following versions of software and data (see [references ⓘ](#)) were used in the production of this report:

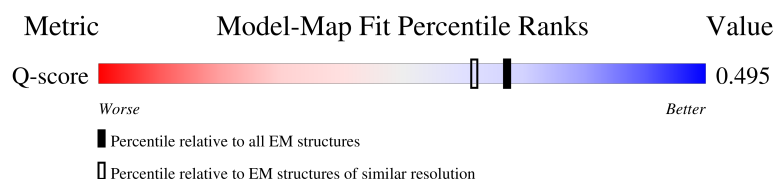
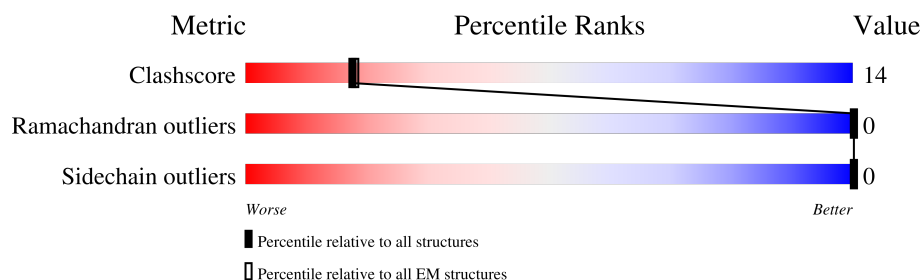
EMDB validation analysis : 0.0.1.dev132
Mogul : 2022.3.0, CSD as543be (2022)
MolProbity : 4-5-2 with Phenix2.0
Buster-report : wwPDB partial adaption of 1.1.7 (2018)
Percentile statistics : 20250101.v01 (using entries in the PDB archive January 1st 2025)
EM percentile statistics : 202505.v01 (Using data in the EMDB archive up until May 2025)
MapQ : 1.9.13
Ideal geometry (proteins) : Engh & Huber (2001)
Ideal geometry (DNA, RNA) : Parkinson et al. (1996)
Validation Pipeline (wwPDB-VP) : 2.49

1 Overall quality at a glance

The following experimental techniques were used to determine the structure:
ELECTRON MICROSCOPY

The reported resolution of this entry is 3.20 Å.

Percentile scores (ranging between 0-100) for global validation metrics of the entry are shown in the following graphic. The table shows the number of entries on which the scores are based.



Metric	Whole archive (#Entries)	EM structures (#Entries)	Similar EM resolution (#Entries, resolution range(Å))
Clashscore	229148	23984	-
Ramachandran outliers	224038	23583	-
Sidechain outliers	223484	23102	-
Q-score	-	25397	15020 (2.70 - 3.70)

The table below summarises the geometric issues observed across the polymeric chains and their fit to the map. The red, orange, yellow and green segments of the bar indicate the fraction of residues that contain outliers for ≥ 3 , 2, 1 and 0 types of geometric quality criteria respectively. A grey segment represents the fraction of residues that are not modelled. The numeric value for each fraction is indicated below the corresponding segment, with a dot representing fractions $\leq 5\%$. The upper red bar (where present) indicates the fraction of residues that have poor fit to the EM map (all-atom inclusion $< 40\%$). The numeric value is given above the bar.

Mol	Chain	Length	Quality of chain
1	A	250	
2	B	358	
3	G	71	
4	N	130	

Continued on next page...

Continued from previous page...

Mol	Chain	Length	Quality of chain
5	R	312	<div><div></div><div>72%</div><div>23%</div><div></div></div>

2 Entry composition

There are 6 unique types of molecules in this entry. The entry contains 7607 atoms, of which 0 are hydrogens and 0 are deuteriums.

In the tables below, the AltConf column contains the number of residues with at least one atom in alternate conformation and the Trace column contains the number of residues modelled with at most 2 atoms.

- Molecule 1 is a protein called Guanine nucleotide-binding protein G(s) subunit alpha.

Mol	Chain	Residues	Atoms					AltConf	Trace
1	A	220	Total	C	N	O	S	0	0
			1740	1110	317	308	5		

There are 28 discrepancies between the modelled and reference sequences:

Chain	Residue	Modelled	Actual	Comment	Reference
A	4	GLY	-	expression tag	UNP Q5FWY2
A	5	SER	-	expression tag	UNP Q5FWY2
A	49	ASP	GLY	engineered mutation	UNP Q5FWY2
A	50	ASN	GLU	engineered mutation	UNP Q5FWY2
A	195	HIS	-	linker	UNP Q5FWY2
A	196	GLY	-	linker	UNP Q5FWY2
A	197	GLY	-	linker	UNP Q5FWY2
A	198	SER	-	linker	UNP Q5FWY2
A	199	GLY	-	linker	UNP Q5FWY2
A	200	GLY	-	linker	UNP Q5FWY2
A	201	SER	-	linker	UNP Q5FWY2
A	202	GLY	-	linker	UNP Q5FWY2
A	203	GLY	-	linker	UNP Q5FWY2
A	249	ASP	ALA	engineered mutation	UNP Q5FWY2
A	252	ASP	SER	engineered mutation	UNP Q5FWY2
A	?	-	ASN	deletion	UNP Q5FWY2
A	?	-	MET	deletion	UNP Q5FWY2
A	?	-	VAL	deletion	UNP Q5FWY2
A	?	-	ILE	deletion	UNP Q5FWY2
A	?	-	ARG	deletion	UNP Q5FWY2
A	?	-	GLU	deletion	UNP Q5FWY2
A	?	-	ASP	deletion	UNP Q5FWY2
A	?	-	ASN	deletion	UNP Q5FWY2
A	?	-	GLN	deletion	UNP Q5FWY2
A	?	-	THR	deletion	UNP Q5FWY2
A	272	LEU	PRO	engineered mutation	UNP Q5FWY2
A	372	ALA	ILE	engineered mutation	UNP Q5FWY2
A	375	ILE	VAL	engineered mutation	UNP Q5FWY2

- Molecule 2 is a protein called Guanine nucleotide-binding protein G(I)/G(S)/G(T) subunit beta-1.

Mol	Chain	Residues	Atoms					AltConf	Trace
2	B	330	Total	C	N	O	S	0	0
			2443	1520	431	471	21		

There are 19 discrepancies between the modelled and reference sequences:

Chain	Residue	Modelled	Actual	Comment	Reference
B	-17	MET	-	initiating methionine	UNP P62873
B	-16	HIS	-	expression tag	UNP P62873
B	-15	HIS	-	expression tag	UNP P62873
B	-14	HIS	-	expression tag	UNP P62873
B	-13	HIS	-	expression tag	UNP P62873
B	-12	HIS	-	expression tag	UNP P62873
B	-11	HIS	-	expression tag	UNP P62873
B	-10	LEU	-	expression tag	UNP P62873
B	-9	GLU	-	expression tag	UNP P62873
B	-8	VAL	-	expression tag	UNP P62873
B	-7	LEU	-	expression tag	UNP P62873
B	-6	PHE	-	expression tag	UNP P62873
B	-5	GLN	-	expression tag	UNP P62873
B	-4	GLY	-	expression tag	UNP P62873
B	-3	PRO	-	expression tag	UNP P62873
B	-2	GLY	-	expression tag	UNP P62873
B	-1	SER	-	expression tag	UNP P62873
B	0	SER	-	expression tag	UNP P62873
B	1	GLY	-	expression tag	UNP P62873

- Molecule 3 is a protein called Guanine nucleotide-binding protein G(I)/G(S)/G(O) subunit gamma-2.

Mol	Chain	Residues	Atoms					AltConf	Trace
3	G	54	Total	C	N	O	S	0	0
			362	230	64	66	2		

- Molecule 4 is a protein called Nanobody 35.

Mol	Chain	Residues	Atoms					AltConf	Trace
4	N	122	Total	C	N	O	S	0	0
			864	540	151	167	6		

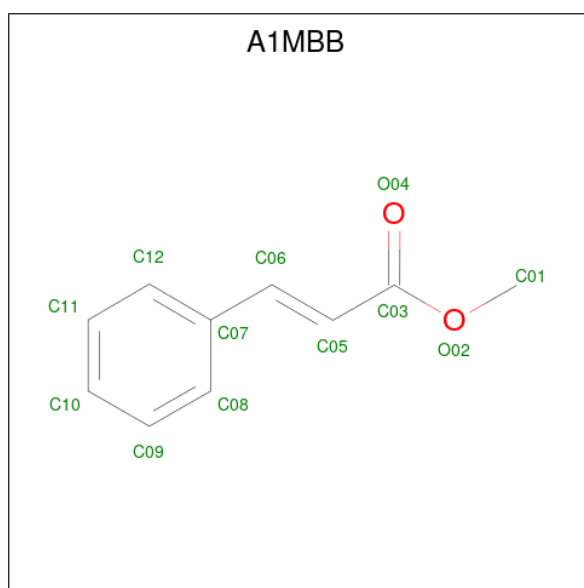
- Molecule 5 is a protein called Olfactory receptor.

Mol	Chain	Residues	Atoms					AltConf	Trace
5	R	298	Total	C	N	O	S	0	0
			2186	1458	339	363	26		

There is a discrepancy between the modelled and reference sequences:

Chain	Residue	Modelled	Actual	Comment	Reference
R	263	VAL	LEU	conflict	UNP Q7TRW7

- Molecule 6 is Methyl cinnamate (CCD ID: A1MBB) (formula: C₁₀H₁₀O₂) (labeled as "Ligand of Interest" by depositor).

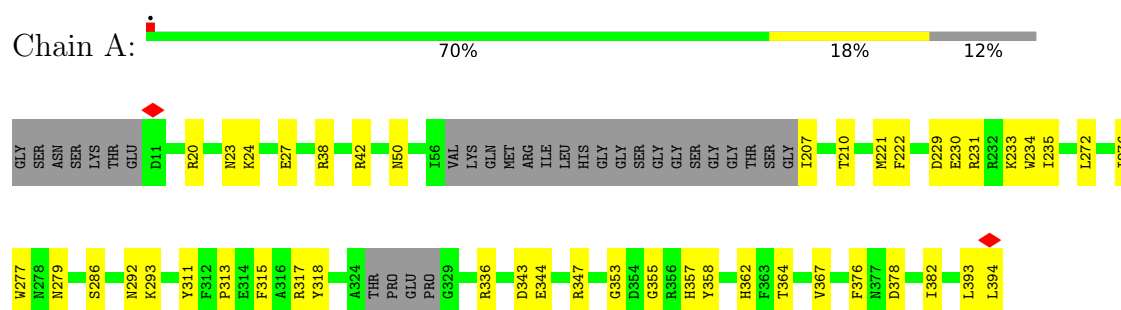


Mol	Chain	Residues	Atoms			AltConf
6	R	1	Total	C	O	0
			12	10	2	

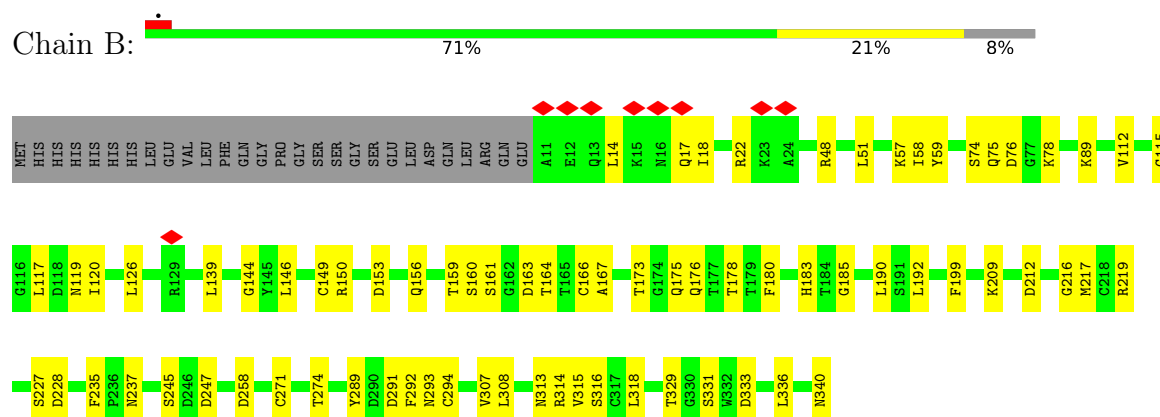
3 Residue-property plots [i](#)

These plots are drawn for all protein, RNA, DNA and oligosaccharide chains in the entry. The first graphic for a chain summarises the proportions of the various outlier classes displayed in the second graphic. The second graphic shows the sequence view annotated by issues in geometry and atom inclusion in map density. Residues are color-coded according to the number of geometric quality criteria for which they contain at least one outlier: green = 0, yellow = 1, orange = 2 and red = 3 or more. A red diamond above a residue indicates a poor fit to the EM map for this residue (all-atom inclusion < 40%). Stretches of 2 or more consecutive residues without any outlier are shown as a green connector. Residues present in the sample, but not in the model, are shown in grey.

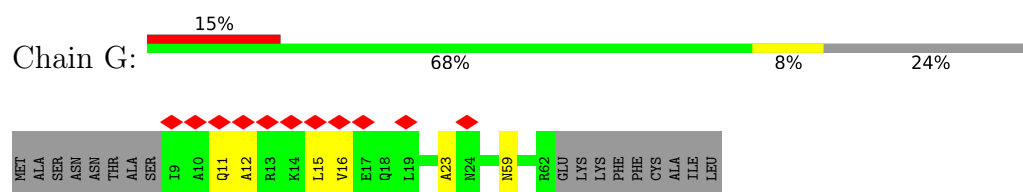
- Molecule 1: Guanine nucleotide-binding protein G(s) subunit alpha



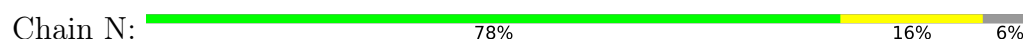
- Molecule 2: Guanine nucleotide-binding protein G(I)/G(S)/G(T) subunit beta-1



- Molecule 3: Guanine nucleotide-binding protein G(I)/G(S)/G(O) subunit gamma-2

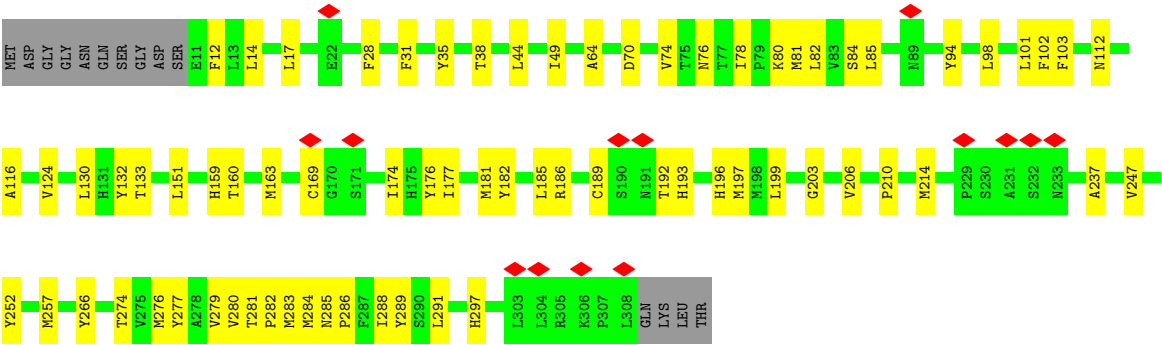


- Molecule 4: Nanobody 35





• Molecule 5: Olfactory receptor



4 Experimental information

Property	Value	Source
EM reconstruction method	SINGLE PARTICLE	Depositor
Imposed symmetry	POINT, Not provided	
Number of particles used	94056	Depositor
Resolution determination method	FSC 0.143 CUT-OFF	Depositor
CTF correction method	NONE	Depositor
Microscope	TFS KRIOS	Depositor
Voltage (kV)	300	Depositor
Electron dose ($e^-/\text{\AA}^2$)	62.2	Depositor
Minimum defocus (nm)	800	Depositor
Maximum defocus (nm)	1700	Depositor
Magnification	Not provided	
Image detector	GATAN K3 BIOQUANTUM (6k x 4k)	Depositor
Maximum map value	1.134	Depositor
Minimum map value	-0.569	Depositor
Average map value	0.003	Depositor
Map value standard deviation	0.015	Depositor
Recommended contour level	0.12	Depositor
Map size (\AA)	331.2, 331.2, 331.2	wwPDB
Map dimensions	400, 400, 400	wwPDB
Map angles ($^\circ$)	90.0, 90.0, 90.0	wwPDB
Pixel spacing (\AA)	0.828, 0.828, 0.828	Depositor

5 Model quality [i](#)

5.1 Standard geometry [i](#)

Bond lengths and bond angles in the following residue types are not validated in this section: A1MBB

The Z score for a bond length (or angle) is the number of standard deviations the observed value is removed from the expected value. A bond length (or angle) with $|Z| > 5$ is considered an outlier worth inspection. RMSZ is the root-mean-square of all Z scores of the bond lengths (or angles).

Mol	Chain	Bond lengths		Bond angles	
		RMSZ	$\# Z > 5$	RMSZ	$\# Z > 5$
1	A	0.18	0/1774	0.37	0/2397
2	B	0.20	0/2490	0.40	0/3390
3	G	0.17	0/368	0.39	0/506
4	N	0.25	0/882	0.46	0/1202
5	R	0.17	0/2239	0.38	0/3069
All	All	0.19	0/7753	0.39	0/10564

There are no bond length outliers.

There are no bond angle outliers.

There are no chirality outliers.

There are no planarity outliers.

5.2 Too-close contacts [i](#)

In the following table, the Non-H and H(model) columns list the number of non-hydrogen atoms and hydrogen atoms in the chain respectively. The H(added) column lists the number of hydrogen atoms added and optimized by MolProbity. The Clashes column lists the number of clashes within the asymmetric unit, whereas Symm-Clashes lists symmetry-related clashes.

Mol	Chain	Non-H	H(model)	H(added)	Clashes	Symm-Clashes
1	A	1740	0	1659	57	0
2	B	2443	0	2304	66	0
3	G	362	0	326	5	0
4	N	864	0	766	30	0
5	R	2186	0	2133	65	0
6	R	12	0	0	2	0
All	All	7607	0	7188	200	0

The all-atom clashscore is defined as the number of clashes found per 1000 atoms (including

hydrogen atoms). The all-atom clashscore for this structure is 14.

All (200) close contacts within the same asymmetric unit are listed below, sorted by their clash magnitude.

Atom-1	Atom-2	Interatomic distance (Å)	Clash overlap (Å)
1:A:393:LEU:O	5:R:237:ALA:HB2	1.55	1.06
2:B:57:LYS:HE2	2:B:75:GLN:HG3	1.40	1.04
1:A:27:GLU:OE2	2:B:89:LYS:NZ	1.91	1.02
2:B:18:ILE:HD11	3:G:23:ALA:HB2	1.49	0.94
1:A:315:PHE:CE2	1:A:336:ARG:NH2	2.37	0.92
1:A:355:GLY:O	1:A:358:TYR:CZ	2.22	0.92
2:B:292:PHE:CE2	2:B:314:ARG:N	2.40	0.89
2:B:292:PHE:CD2	2:B:313:ASN:C	2.53	0.87
5:R:280:VAL:O	5:R:284:MET:HG2	1.78	0.84
1:A:277:TRP:CZ2	1:A:357:HIS:CD2	2.69	0.81
1:A:38:ARG:HB3	5:R:133:THR:HG21	1.63	0.80
2:B:146:LEU:HD11	2:B:159:THR:HB	1.60	0.80
2:B:173:THR:OG1	2:B:175:GLN:HG2	1.83	0.78
1:A:355:GLY:O	1:A:358:TYR:CE2	2.37	0.78
2:B:74:SER:OG	2:B:76:ASP:OD1	2.01	0.78
2:B:291:ASP:OD2	2:B:293:ASN:HB3	1.85	0.77
5:R:81:MET:HE1	5:R:177:ILE:HD12	1.67	0.76
2:B:120:ILE:HG23	2:B:139:LEU:O	1.85	0.76
1:A:277:TRP:CE2	1:A:357:HIS:NE2	2.55	0.75
4:N:52:SER:O	4:N:72:ARG:NH1	2.20	0.74
1:A:27:GLU:OE2	2:B:89:LYS:CE	2.35	0.74
5:R:38:THR:OG1	5:R:283:MET:HB2	1.88	0.73
2:B:22:ARG:HD3	2:B:258:ASP:O	1.89	0.72
2:B:292:PHE:CD2	2:B:314:ARG:HA	2.25	0.71
1:A:277:TRP:CH2	1:A:357:HIS:CD2	2.79	0.70
2:B:228:ASP:OD1	4:N:117:TYR:OH	2.06	0.69
1:A:394:LEU:C	1:A:394:LEU:HD23	2.19	0.68
1:A:279:ASN:ND2	4:N:108:PHE:HE2	1.92	0.68
1:A:27:GLU:OE2	2:B:89:LYS:HD2	1.95	0.67
2:B:292:PHE:CE2	2:B:313:ASN:C	2.73	0.67
5:R:38:THR:HG21	5:R:74:VAL:HG21	1.77	0.67
2:B:14:LEU:O	2:B:18:ILE:HG12	1.95	0.67
4:N:34:MET:HB2	4:N:72:ARG:HH21	1.59	0.66
1:A:315:PHE:HE2	1:A:336:ARG:NH2	1.91	0.65
1:A:277:TRP:CH2	1:A:357:HIS:HD2	2.14	0.65
2:B:146:LEU:HD12	2:B:160:SER:O	1.97	0.65
5:R:210:PRO:O	5:R:214:MET:HG3	1.97	0.64
5:R:35:TYR:HB2	5:R:78:ILE:HG21	1.78	0.63

Continued on next page...

Continued from previous page...

Atom-1	Atom-2	Interatomic distance (Å)	Clash overlap (Å)
5:R:112:ASN:OD1	5:R:252:TYR:OH	2.14	0.63
3:G:12:ALA:O	3:G:16:VAL:HB	1.98	0.63
2:B:115:GLY:HA3	2:B:146:LEU:HD23	1.80	0.62
5:R:279:VAL:C	5:R:282:PRO:HD2	2.24	0.62
1:A:23:ASN:O	1:A:27:GLU:HG2	1.98	0.62
2:B:292:PHE:CE2	2:B:314:ARG:CA	2.83	0.62
1:A:27:GLU:OE2	2:B:89:LYS:CD	2.48	0.61
1:A:313:PRO:CG	4:N:62:GLY:O	2.48	0.61
1:A:376:PHE:CE1	5:R:130:LEU:HD12	2.35	0.61
2:B:18:ILE:HD11	3:G:23:ALA:CB	2.27	0.61
2:B:212:ASP:OD2	2:B:219:ARG:NH2	2.34	0.61
2:B:292:PHE:CD2	2:B:313:ASN:O	2.53	0.61
1:A:279:ASN:ND2	4:N:108:PHE:CE2	2.69	0.60
1:A:20:ARG:O	1:A:24:LYS:HG2	2.01	0.60
4:N:51:ILE:HG23	4:N:72:ARG:NH2	2.17	0.59
2:B:51:LEU:HB2	2:B:336:LEU:HB2	1.85	0.59
2:B:227:SER:O	2:B:245:SER:OG	2.20	0.59
2:B:292:PHE:HD2	2:B:314:ARG:HA	1.64	0.59
2:B:163:ASP:O	2:B:164:THR:OG1	2.17	0.59
1:A:367:VAL:HG22	1:A:367:VAL:O	2.01	0.58
5:R:31:PHE:CE2	5:R:81:MET:HE3	2.38	0.58
5:R:17:LEU:HD12	5:R:17:LEU:H	1.69	0.58
2:B:292:PHE:CD2	2:B:314:ARG:N	2.68	0.58
1:A:231:ARG:N	4:N:109:ASP:OD2	2.36	0.57
1:A:277:TRP:CE2	1:A:357:HIS:CD2	2.93	0.57
1:A:362:HIS:NE2	1:A:378:ASP:OD2	2.27	0.57
5:R:274:THR:HA	5:R:277:TYR:HD1	1.69	0.57
5:R:31:PHE:HE2	5:R:81:MET:HE3	1.69	0.57
2:B:289:TYR:HB2	2:B:293:ASN:O	2.05	0.56
2:B:292:PHE:CD2	2:B:314:ARG:CA	2.88	0.56
5:R:163:MET:HA	5:R:163:MET:HE2	1.86	0.56
1:A:230:GLU:HA	4:N:109:ASP:OD2	2.04	0.56
1:A:318:TYR:O	1:A:336:ARG:NH1	2.34	0.56
5:R:81:MET:SD	5:R:177:ILE:HB	2.45	0.56
5:R:280:VAL:CG2	5:R:284:MET:HE2	2.35	0.56
1:A:286:SER:OG	1:A:382:ILE:CD1	2.53	0.56
5:R:76:ASN:ND2	5:R:103:PHE:HB3	2.20	0.56
5:R:193:HIS:O	5:R:197:MET:HG2	2.06	0.56
1:A:393:LEU:C	5:R:237:ALA:HB2	2.29	0.56
5:R:80:LYS:NZ	5:R:84:SER:HB2	2.21	0.55
1:A:311:TYR:O	4:N:62:GLY:HA3	2.06	0.55

Continued on next page...

Continued from previous page...

Atom-1	Atom-2	Interatomic distance (Å)	Clash overlap (Å)
2:B:173:THR:HG1	2:B:175:GLN:HG2	1.72	0.55
5:R:203:GLY:HA3	6:R:401:A1MBB:C12	2.36	0.55
2:B:291:ASP:OD2	2:B:293:ASN:CB	2.54	0.55
2:B:183:HIS:CE1	2:B:209:LYS:HG3	2.42	0.55
5:R:116:ALA:HB2	5:R:210:PRO:HB3	1.88	0.55
2:B:160:SER:HB3	2:B:190:LEU:HD23	1.88	0.55
5:R:274:THR:HA	5:R:277:TYR:CD1	2.41	0.54
2:B:291:ASP:CG	2:B:293:ASN:HB3	2.32	0.54
1:A:50:ASN:O	1:A:293:LYS:NZ	2.41	0.53
1:A:234:TRP:HB2	2:B:117:LEU:HD21	1.89	0.53
5:R:283:MET:O	5:R:286:PRO:HD2	2.09	0.52
2:B:274:THR:OG1	2:B:315:VAL:O	2.18	0.52
4:N:94:TYR:O	4:N:121:GLY:HA2	2.09	0.52
1:A:230:GLU:HA	4:N:109:ASP:CG	2.34	0.52
5:R:176:TYR:CE1	5:R:177:ILE:HG12	2.45	0.52
1:A:277:TRP:CZ3	1:A:357:HIS:HD2	2.28	0.51
4:N:77:ASN:O	4:N:77:ASN:OD1	2.28	0.51
2:B:293:ASN:OD1	2:B:307:VAL:HG13	2.10	0.51
4:N:52:SER:O	4:N:72:ARG:CZ	2.59	0.50
5:R:276:MET:HE2	5:R:276:MET:HA	1.93	0.50
2:B:48:ARG:HE	2:B:340:ASN:HB3	1.76	0.50
5:R:182:TYR:O	5:R:186:ARG:HG2	2.12	0.50
5:R:203:GLY:HA3	6:R:401:A1MBB:C11	2.41	0.50
5:R:101:LEU:HD11	5:R:181:MET:SD	2.51	0.49
4:N:79:LEU:HD21	4:N:96:CYS:SG	2.52	0.49
2:B:119:ASN:OD1	2:B:144:GLY:C	2.56	0.49
2:B:146:LEU:CD1	2:B:159:THR:HB	2.36	0.49
1:A:286:SER:OG	1:A:382:ILE:HG12	2.13	0.49
1:A:277:TRP:NE1	1:A:357:HIS:HE2	2.10	0.49
5:R:280:VAL:HG22	5:R:284:MET:HE2	1.95	0.49
4:N:34:MET:H	4:N:72:ARG:NH2	2.11	0.49
5:R:291:LEU:O	5:R:297:HIS:NE2	2.46	0.48
2:B:149:CYS:O	2:B:150:ARG:NH1	2.45	0.48
2:B:318:LEU:HD12	2:B:329:THR:HG22	1.95	0.48
5:R:124:VAL:HG12	5:R:132:TYR:HD1	1.78	0.48
5:R:159:HIS:CE1	5:R:199:LEU:HD13	2.49	0.48
1:A:210:THR:HG23	1:A:221:MET:HB3	1.95	0.48
2:B:112:VAL:HG13	2:B:126:LEU:HD11	1.96	0.48
1:A:315:PHE:CZ	1:A:336:ARG:CZ	2.96	0.48
5:R:247:VAL:HG21	5:R:288:ILE:HD13	1.96	0.48
1:A:207:ILE:HG12	1:A:207:ILE:O	2.14	0.48

Continued on next page...

Continued from previous page...

Atom-1	Atom-2	Interatomic distance (Å)	Clash overlap (Å)
1:A:315:PHE:CE2	1:A:336:ARG:CZ	2.94	0.48
4:N:65:LYS:HB2	4:N:65:LYS:HE3	1.68	0.48
2:B:245:SER:HB3	2:B:247:ASP:OD1	2.14	0.47
1:A:292:ASN:HA	1:A:364:THR:HG23	1.94	0.47
4:N:53:GLN:HA	4:N:72:ARG:HH12	1.79	0.47
5:R:70:ASP:O	5:R:74:VAL:HG23	2.14	0.47
1:A:230:GLU:CA	4:N:109:ASP:OD2	2.63	0.47
2:B:271:CYS:SG	2:B:291:ASP:HB3	2.55	0.47
5:R:12:PHE:HE2	5:R:94:TYR:HD1	1.63	0.47
1:A:394:LEU:C	1:A:394:LEU:CD2	2.86	0.47
5:R:281:THR:N	5:R:282:PRO:CD	2.78	0.47
5:R:14:LEU:HA	5:R:174:ILE:HG12	1.97	0.47
3:G:11:GLN:O	3:G:15:LEU:N	2.48	0.47
1:A:318:TYR:OH	1:A:343:ASP:OD2	2.20	0.46
5:R:38:THR:OG1	5:R:283:MET:CB	2.62	0.46
2:B:17:GLN:OE1	2:B:18:ILE:HD13	2.15	0.46
2:B:293:ASN:OD1	2:B:307:VAL:CG1	2.63	0.46
2:B:58:ILE:O	2:B:316:SER:OG	2.25	0.46
2:B:235:PHE:HD2	2:B:237:ASN:HB3	1.80	0.46
2:B:192:LEU:HD23	2:B:199:PHE:HB3	1.97	0.46
4:N:51:ILE:HG23	4:N:72:ARG:HH21	1.80	0.46
5:R:49:ILE:HG21	5:R:64:ALA:HB2	1.98	0.46
5:R:14:LEU:HD22	5:R:177:ILE:O	2.16	0.46
5:R:112:ASN:ND2	5:R:206:VAL:O	2.49	0.45
5:R:279:VAL:O	5:R:282:PRO:HD2	2.16	0.45
4:N:34:MET:H	4:N:72:ARG:HH22	1.62	0.45
1:A:277:TRP:CZ2	1:A:357:HIS:NE2	2.82	0.45
1:A:229:ASP:N	1:A:229:ASP:OD1	2.41	0.45
5:R:169:CYS:N	5:R:189:CYS:SG	2.86	0.45
5:R:98:LEU:HD12	5:R:160:THR:HG23	1.99	0.44
2:B:294:CYS:HB2	2:B:308:LEU:HB2	1.98	0.44
1:A:272:LEU:O	1:A:276:ILE:HG13	2.18	0.44
1:A:344:GLU:OE1	1:A:347:ARG:NH1	2.51	0.43
2:B:17:GLN:CD	2:B:17:GLN:C	2.86	0.43
1:A:231:ARG:H	4:N:109:ASP:CG	2.26	0.43
5:R:192:THR:HG22	5:R:196:HIS:HB2	2.00	0.43
5:R:151:LEU:HD12	5:R:151:LEU:HA	1.82	0.43
5:R:176:TYR:CD1	5:R:177:ILE:HG12	2.53	0.43
5:R:185:LEU:HD22	5:R:192:THR:HG23	2.01	0.43
2:B:57:LYS:HE3	2:B:59:TYR:HE1	1.83	0.43
5:R:70:ASP:OD2	5:R:285:ASN:HB2	2.19	0.43

Continued on next page...

Continued from previous page...

Atom-1	Atom-2	Interatomic distance (Å)	Clash overlap (Å)
5:R:80:LYS:HA	5:R:80:LYS:HD2	1.84	0.43
4:N:53:GLN:HA	4:N:72:ARG:NH1	2.34	0.43
2:B:340:ASN:ND2	3:G:59:ASN:HD21	2.17	0.43
2:B:166:CYS:HB2	2:B:180:PHE:HB2	2.01	0.43
2:B:217:MET:HE1	2:B:219:ARG:HD3	2.01	0.42
2:B:331:SER:HB3	2:B:333:ASP:OD1	2.20	0.42
1:A:233:LYS:HD3	1:A:233:LYS:HA	1.79	0.42
4:N:33:LYS:HG2	4:N:51:ILE:O	2.19	0.42
5:R:182:TYR:HD2	5:R:186:ARG:HH12	1.66	0.42
2:B:180:PHE:CE1	2:B:216:GLY:HA2	2.55	0.42
1:A:313:PRO:CD	4:N:62:GLY:O	2.68	0.42
4:N:47:TRP:HZ2	4:N:50:ASP:HB2	1.84	0.42
2:B:161:SER:HB3	2:B:163:ASP:OD1	2.20	0.42
5:R:44:LEU:HD23	5:R:44:LEU:HA	1.93	0.42
1:A:315:PHE:C	1:A:317:ARG:N	2.78	0.42
4:N:34:MET:N	4:N:72:ARG:NH2	2.68	0.42
5:R:186:ARG:HH21	5:R:266:TYR:HD1	1.67	0.42
1:A:210:THR:CG2	1:A:221:MET:HB3	2.49	0.42
5:R:81:MET:O	5:R:85:LEU:HD23	2.20	0.42
1:A:42:ARG:HG2	1:A:222:PHE:HE2	1.85	0.41
4:N:35:ASN:OD1	4:N:97:ALA:HB3	2.20	0.41
5:R:257:MET:O	5:R:257:MET:HG2	2.19	0.41
5:R:35:TYR:HD1	5:R:74:VAL:HG12	1.84	0.41
1:A:231:ARG:O	1:A:235:ILE:HB	2.21	0.41
2:B:153:ASP:OD1	2:B:156:GLN:N	2.53	0.41
1:A:353:GLY:HA3	1:A:357:HIS:CE1	2.56	0.41
1:A:355:GLY:O	1:A:358:TYR:OH	2.37	0.41
5:R:28:PHE:CD1	5:R:82:LEU:HD22	2.56	0.41
5:R:80:LYS:HZ1	5:R:84:SER:HB2	1.85	0.41
2:B:78:LYS:HD3	2:B:78:LYS:HA	1.89	0.41
5:R:102:PHE:HB2	5:R:160:THR:OG1	2.20	0.40
5:R:176:TYR:OH	5:R:274:THR:HB	2.21	0.40
2:B:164:THR:HG22	2:B:185:GLY:C	2.46	0.40
5:R:112:ASN:HD21	5:R:210:PRO:HG2	1.86	0.40
4:N:34:MET:N	4:N:72:ARG:HH22	2.20	0.40
2:B:167:ALA:HB1	2:B:176:GLN:HG2	2.03	0.40
2:B:178:THR:HG21	2:B:216:GLY:HA3	2.02	0.40
4:N:51:ILE:HD12	4:N:58:ILE:HG12	2.02	0.40
5:R:288:ILE:HG13	5:R:289:TYR:N	2.37	0.40

There are no symmetry-related clashes.

5.3 Torsion angles

5.3.1 Protein backbone

In the following table, the Percentiles column shows the percent Ramachandran outliers of the chain as a percentile score with respect to all PDB entries followed by that with respect to all EM entries.

The Analysed column shows the number of residues for which the backbone conformation was analysed, and the total number of residues.

Mol	Chain	Analysed	Favoured	Allowed	Outliers	Percentiles	
1	A	214/250 (86%)	212 (99%)	2 (1%)	0	100	100
2	B	328/358 (92%)	319 (97%)	9 (3%)	0	100	100
3	G	52/71 (73%)	50 (96%)	2 (4%)	0	100	100
4	N	118/130 (91%)	112 (95%)	6 (5%)	0	100	100
5	R	296/312 (95%)	293 (99%)	3 (1%)	0	100	100
All	All	1008/1121 (90%)	986 (98%)	22 (2%)	0	100	100

There are no Ramachandran outliers to report.

5.3.2 Protein sidechains

In the following table, the Percentiles column shows the percent sidechain outliers of the chain as a percentile score with respect to all PDB entries followed by that with respect to all EM entries.

The Analysed column shows the number of residues for which the sidechain conformation was analysed, and the total number of residues.

Mol	Chain	Analysed	Rotameric	Outliers	Percentiles	
1	A	172/220 (78%)	172 (100%)	0	100	100
2	B	252/298 (85%)	252 (100%)	0	100	100
3	G	29/58 (50%)	29 (100%)	0	100	100
4	N	81/108 (75%)	81 (100%)	0	100	100
5	R	218/278 (78%)	218 (100%)	0	100	100
All	All	752/962 (78%)	752 (100%)	0	100	100

There are no protein residues with a non-rotameric sidechain to report.

Sometimes sidechains can be flipped to improve hydrogen bonding and reduce clashes. All (11) such sidechains are listed below:

Mol	Chain	Res	Type
1	A	29	GLN
1	A	218	ASN
1	A	220	HIS
1	A	357	HIS
2	B	156	GLN
2	B	220	GLN
2	B	340	ASN
4	N	123	GLN
5	R	42	ASN
5	R	100	GLN
5	R	244	HIS

5.3.3 RNA [i](#)

There are no RNA molecules in this entry.

5.4 Non-standard residues in protein, DNA, RNA chains [i](#)

There are no non-standard protein/DNA/RNA residues in this entry.

5.5 Carbohydrates [i](#)

There are no oligosaccharides in this entry.

5.6 Ligand geometry [i](#)

1 ligand is modelled in this entry.

In the following table, the Counts columns list the number of bonds (or angles) for which Mogul statistics could be retrieved, the number of bonds (or angles) that are observed in the model and the number of bonds (or angles) that are defined in the Chemical Component Dictionary. The Link column lists molecule types, if any, to which the group is linked. The Z score for a bond length (or angle) is the number of standard deviations the observed value is removed from the expected value. A bond length (or angle) with $|Z| > 2$ is considered an outlier worth inspection. RMSZ is the root-mean-square of all Z scores of the bond lengths (or angles).

Mol	Type	Chain	Res	Link	Bond lengths			Bond angles		
					Counts	RMSZ	$\# Z > 2$	Counts	RMSZ	$\# Z > 2$
6	A1MBB	R	401	-	12,12,12	0.72	0	14,14,14	0.78	0

In the following table, the Chirals column lists the number of chiral outliers, the number of chiral centers analysed, the number of these observed in the model and the number defined in the

Chemical Component Dictionary. Similar counts are reported in the Torsion and Rings columns. '-' means no outliers of that kind were identified.

Mol	Type	Chain	Res	Link	Chirals	Torsions	Rings
6	A1MBB	R	401	-	-	4/7/7/7	0/1/1/1

There are no bond length outliers.

There are no bond angle outliers.

There are no chirality outliers.

All (4) torsion outliers are listed below:

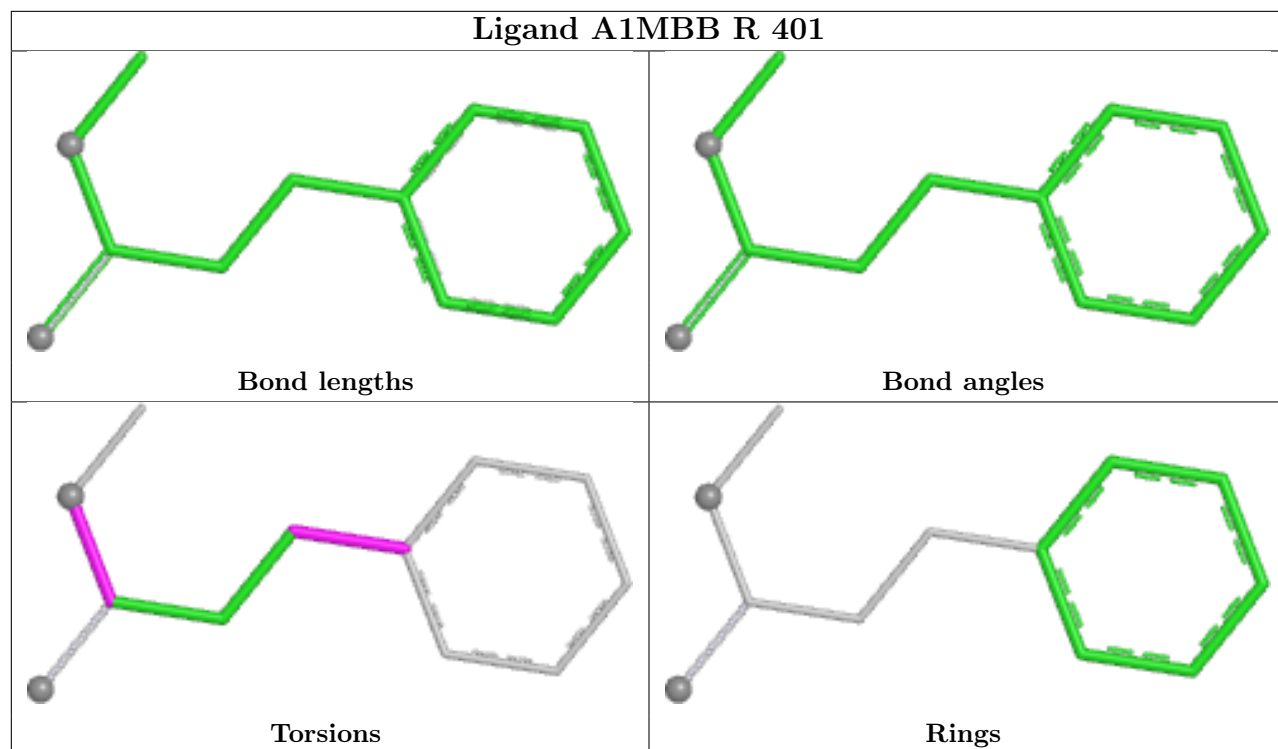
Mol	Chain	Res	Type	Atoms
6	R	401	A1MBB	C05-C03-O02-C01
6	R	401	A1MBB	C05-C06-C07-C08
6	R	401	A1MBB	O04-C03-O02-C01
6	R	401	A1MBB	C05-C06-C07-C12

There are no ring outliers.

1 monomer is involved in 2 short contacts:

Mol	Chain	Res	Type	Clashes	Symm-Clashes
6	R	401	A1MBB	2	0

The following is a two-dimensional graphical depiction of Mogul quality analysis of bond lengths, bond angles, torsion angles, and ring geometry for all instances of the Ligand of Interest. In addition, ligands with molecular weight > 250 and outliers as shown on the validation Tables will also be included. For torsion angles, if less than 5% of the Mogul distribution of torsion angles is within 10 degrees of the torsion angle in question, then that torsion angle is considered an outlier. Any bond that is central to one or more torsion angles identified as an outlier by Mogul will be highlighted in the graph. For rings, the root-mean-square deviation (RMSD) between the ring in question and similar rings identified by Mogul is calculated over all ring torsion angles. If the average RMSD is greater than 60 degrees and the minimal RMSD between the ring in question and any Mogul-identified rings is also greater than 60 degrees, then that ring is considered an outlier. The outliers are highlighted in purple. The color gray indicates Mogul did not find sufficient equivalents in the CSD to analyse the geometry.



5.7 Other polymers [i](#)

There are no such residues in this entry.

5.8 Polymer linkage issues [i](#)

There are no chain breaks in this entry.

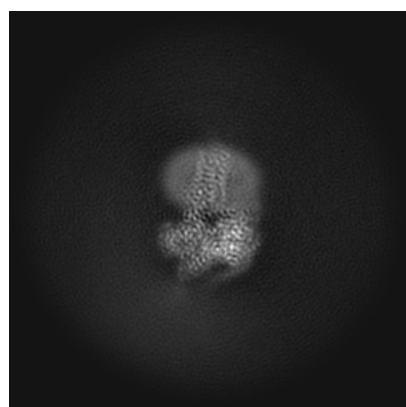
6 Map visualisation [i](#)

This section contains visualisations of the EMDB entry EMD-65621. These allow visual inspection of the internal detail of the map and identification of artifacts.

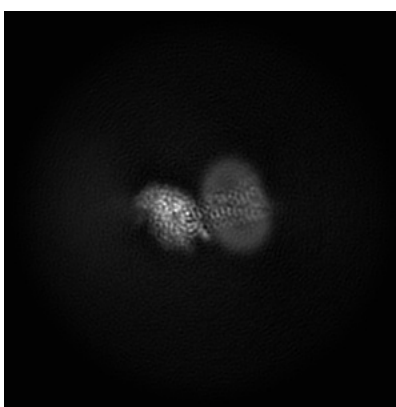
No raw map or half-maps were deposited for this entry and therefore no images, graphs, etc. pertaining to the raw map can be shown.

6.1 Orthogonal projections [i](#)

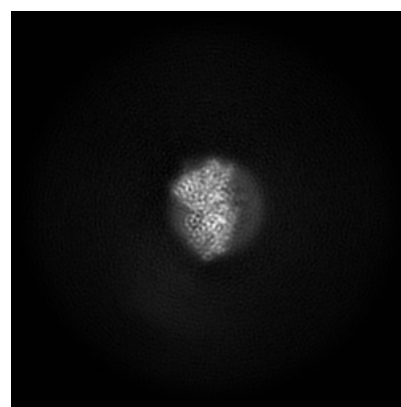
6.1.1 Primary map



X



Y

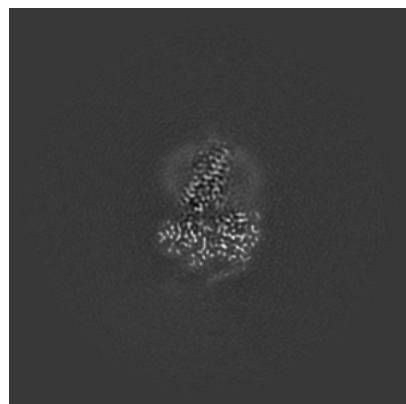


Z

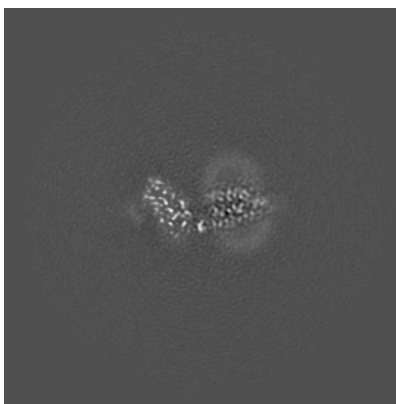
The images above show the map projected in three orthogonal directions.

6.2 Central slices [i](#)

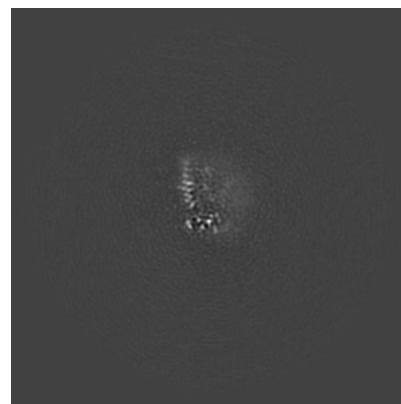
6.2.1 Primary map



X Index: 200



Y Index: 200

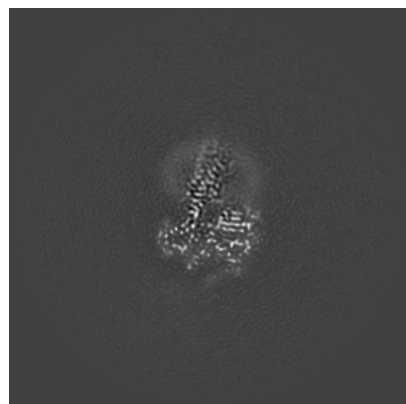


Z Index: 200

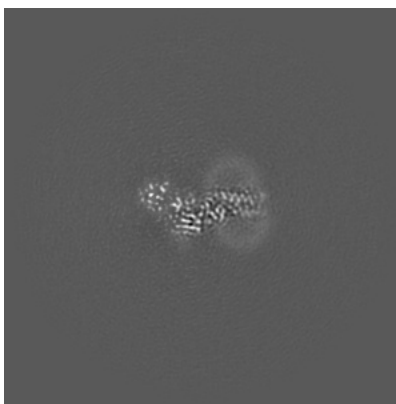
The images above show central slices of the map in three orthogonal directions.

6.3 Largest variance slices [i](#)

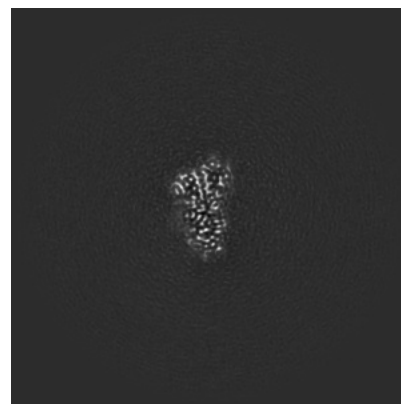
6.3.1 Primary map



X Index: 196



Y Index: 190

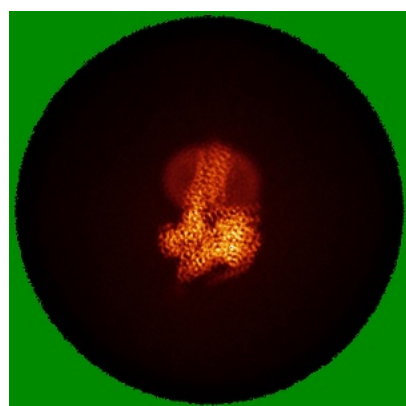


Z Index: 178

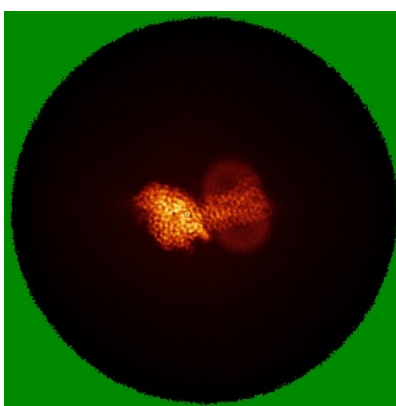
The images above show the largest variance slices of the map in three orthogonal directions.

6.4 Orthogonal standard-deviation projections (False-color) [i](#)

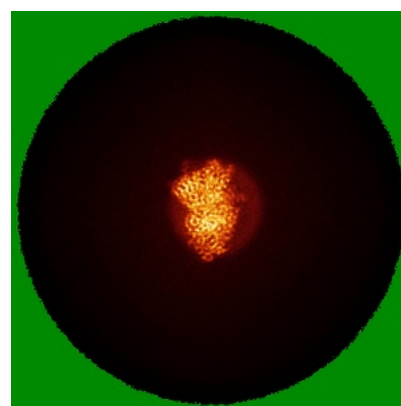
6.4.1 Primary map



X



Y

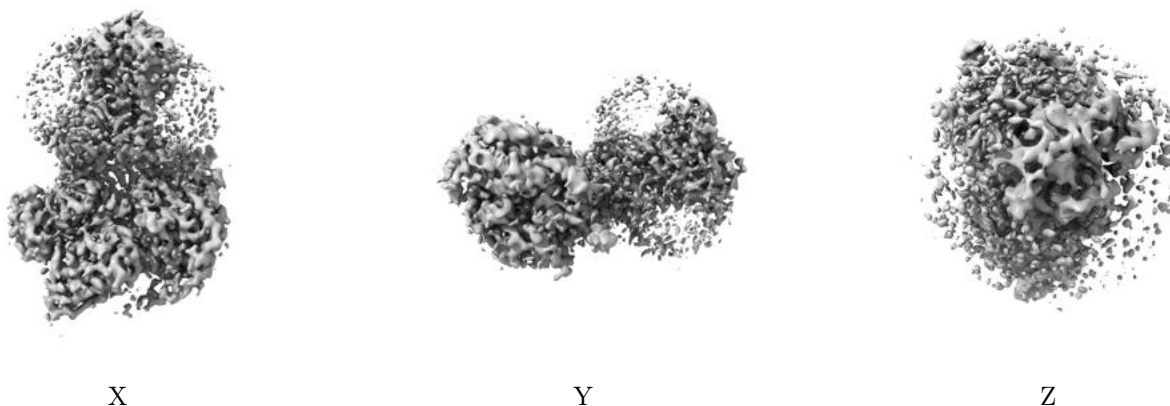


Z

The images above show the map standard deviation projections with false color in three orthogonal directions. Minimum values are shown in green, max in blue, and dark to light orange shades represent small to large values respectively.

6.5 Orthogonal surface views [i](#)

6.5.1 Primary map



The images above show the 3D surface view of the map at the recommended contour level 0.12. These images, in conjunction with the slice images, may facilitate assessment of whether an appropriate contour level has been provided.

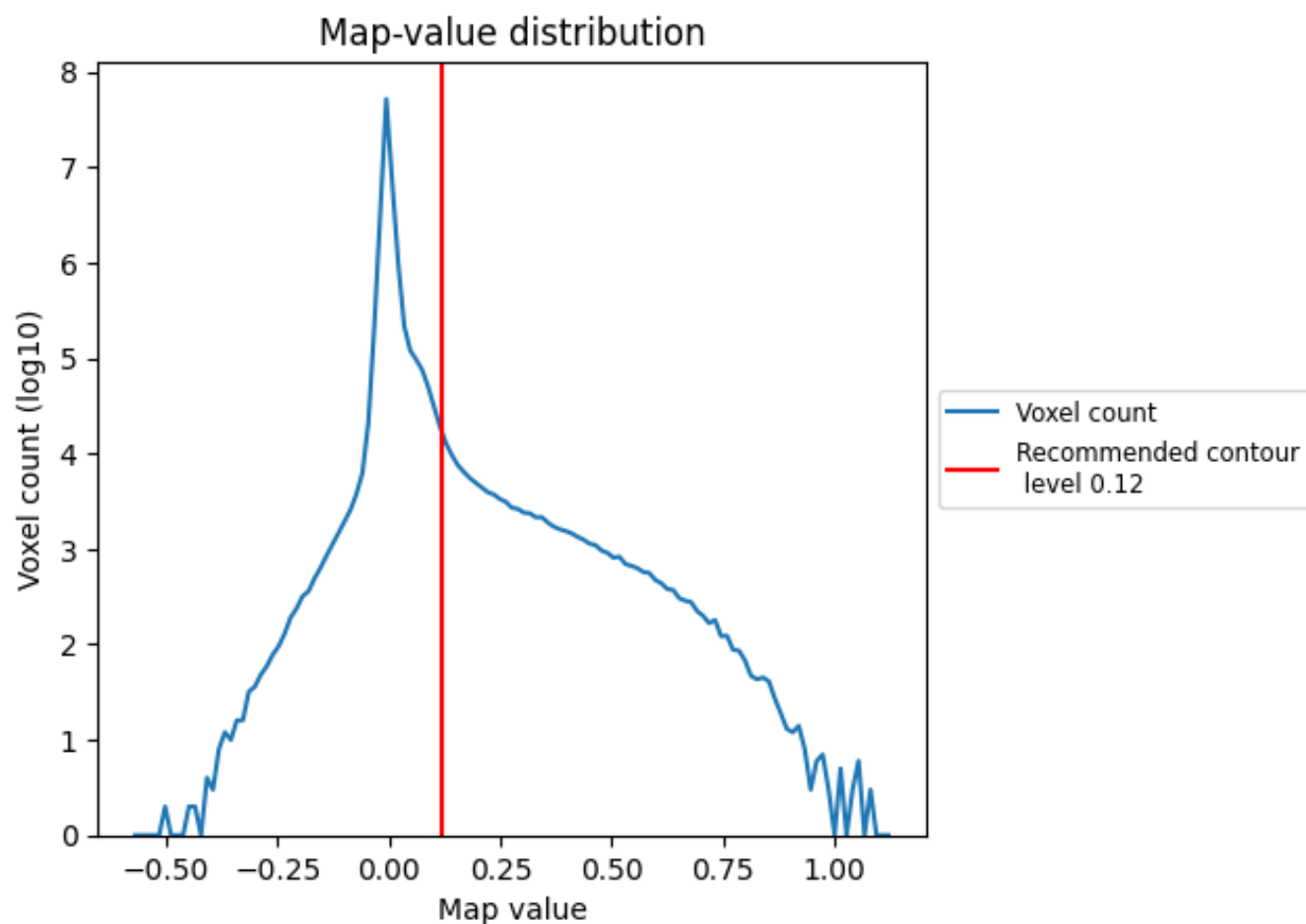
6.6 Mask visualisation [i](#)

This section was not generated. No masks/segmentation were deposited.

7 Map analysis [i](#)

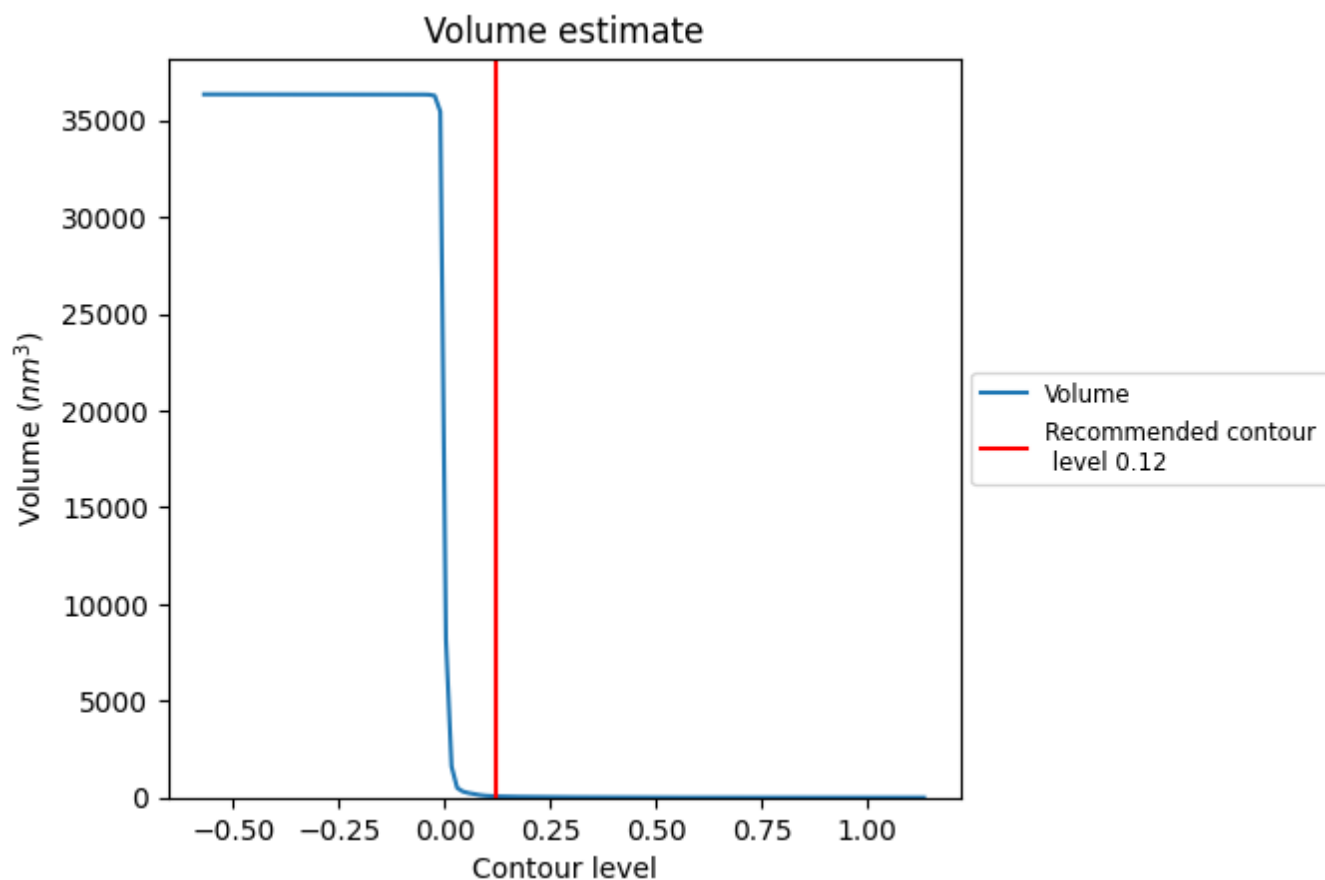
This section contains the results of statistical analysis of the map.

7.1 Map-value distribution [i](#)



The map-value distribution is plotted in 128 intervals along the x-axis. The y-axis is logarithmic. A spike in this graph at zero usually indicates that the volume has been masked.

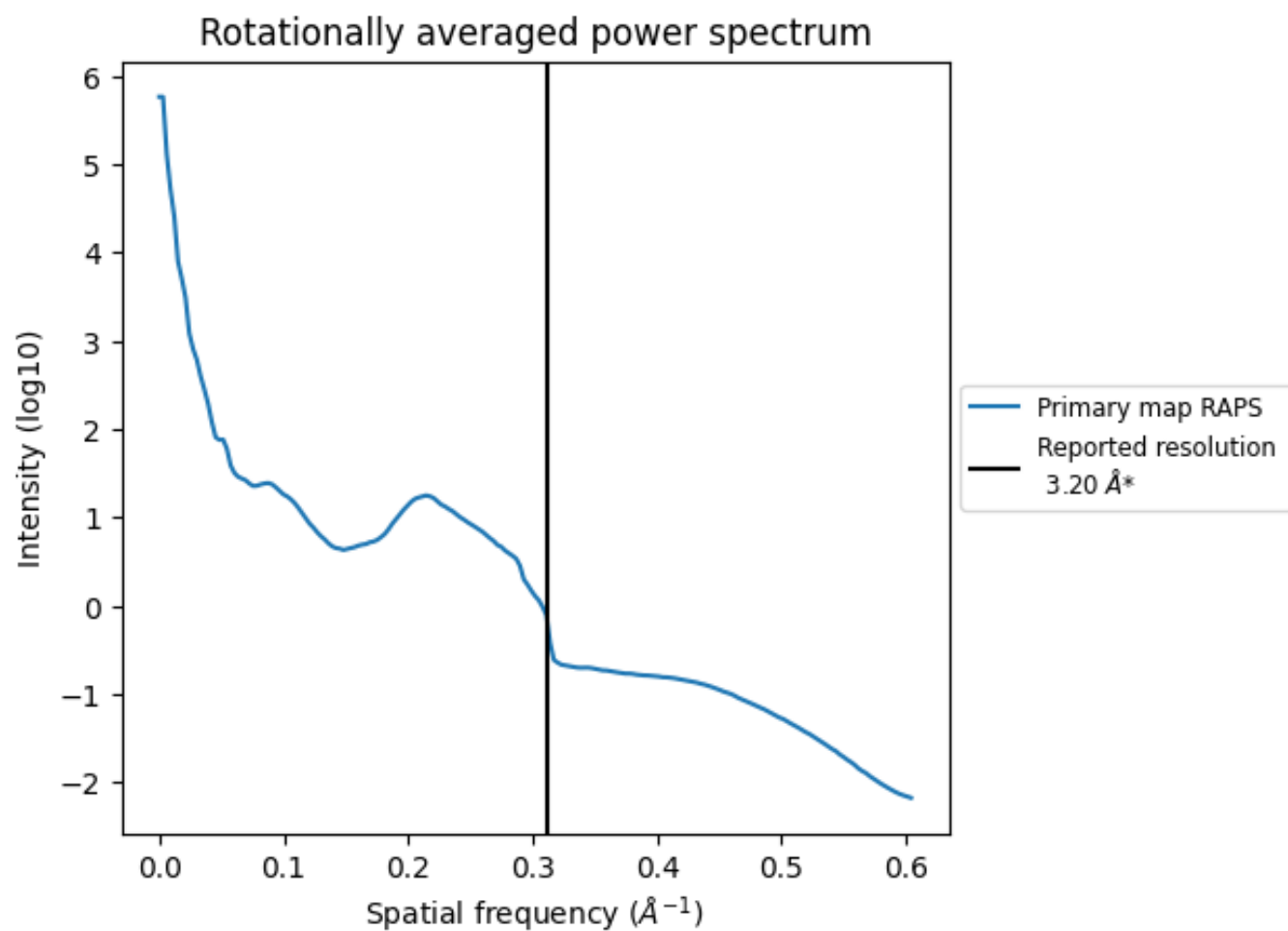
7.2 Volume estimate [i](#)



The volume at the recommended contour level is 65 nm³; this corresponds to an approximate mass of 59 kDa.

The volume estimate graph shows how the enclosed volume varies with the contour level. The recommended contour level is shown as a vertical line and the intersection between the line and the curve gives the volume of the enclosed surface at the given level.

7.3 Rotationally averaged power spectrum ⓘ



*Reported resolution corresponds to spatial frequency of 0.312 Å⁻¹

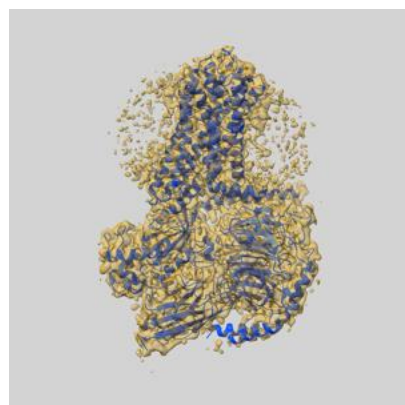
8 Fourier-Shell correlation ⓘ

This section was not generated. No FSC curve or half-maps provided.

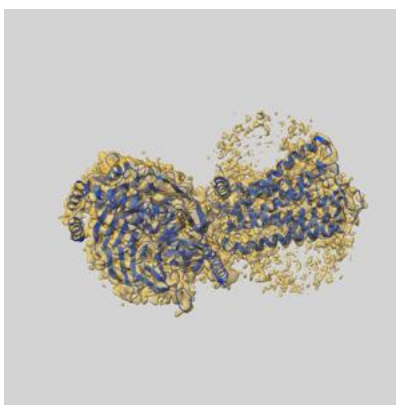
9 Map-model fit [i](#)

This section contains information regarding the fit between EMDB map EMD-65621 and PDB model 9W45. Per-residue inclusion information can be found in [section 3](#) on [page 7](#).

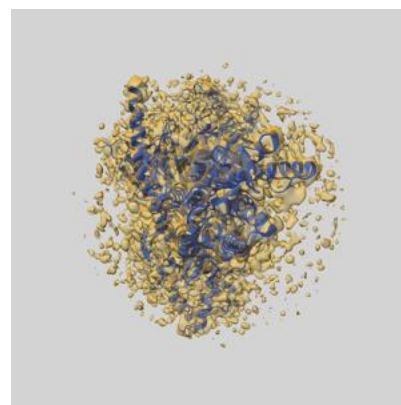
9.1 Map-model overlay [i](#)



X



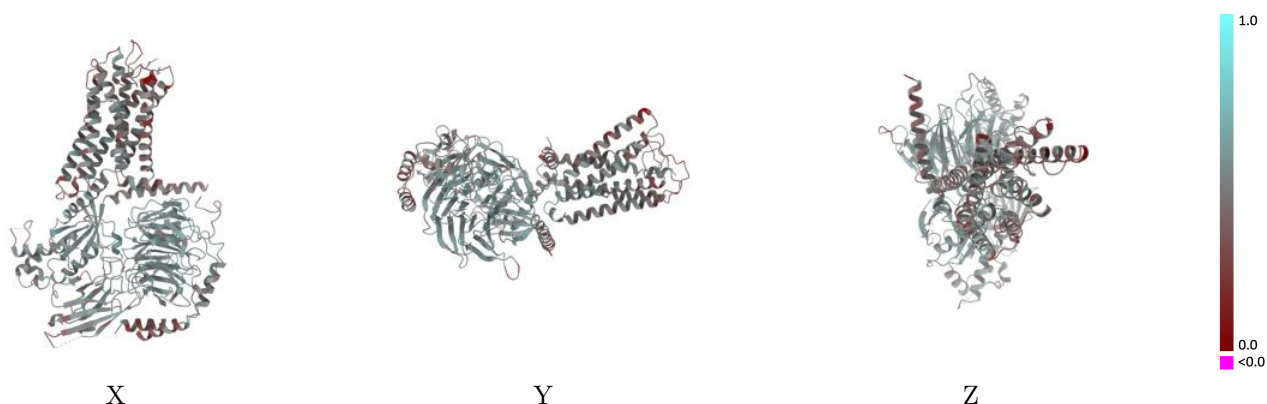
Y



Z

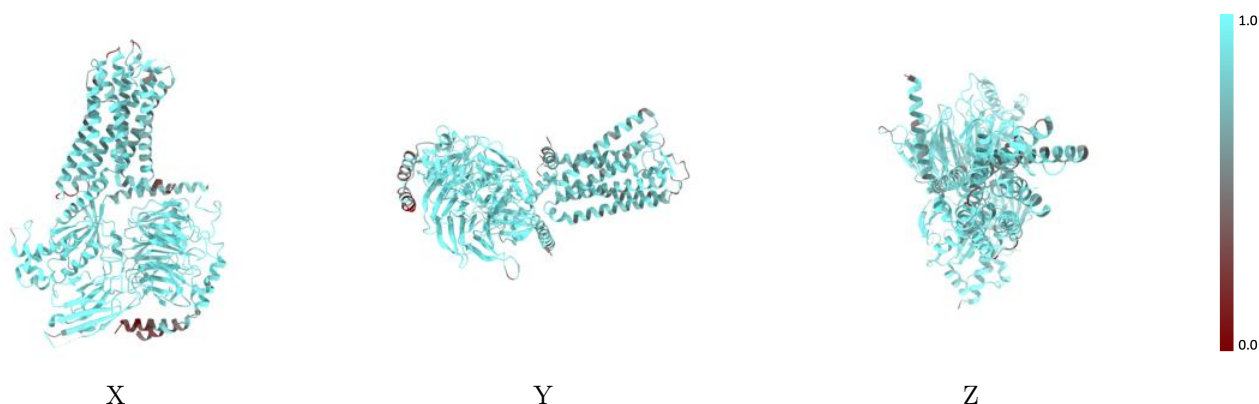
The images above show the 3D surface view of the map at the recommended contour level 0.12 at 50% transparency in yellow overlaid with a ribbon representation of the model coloured in blue. These images allow for the visual assessment of the quality of fit between the atomic model and the map.

9.2 Q-score mapped to coordinate model [i](#)



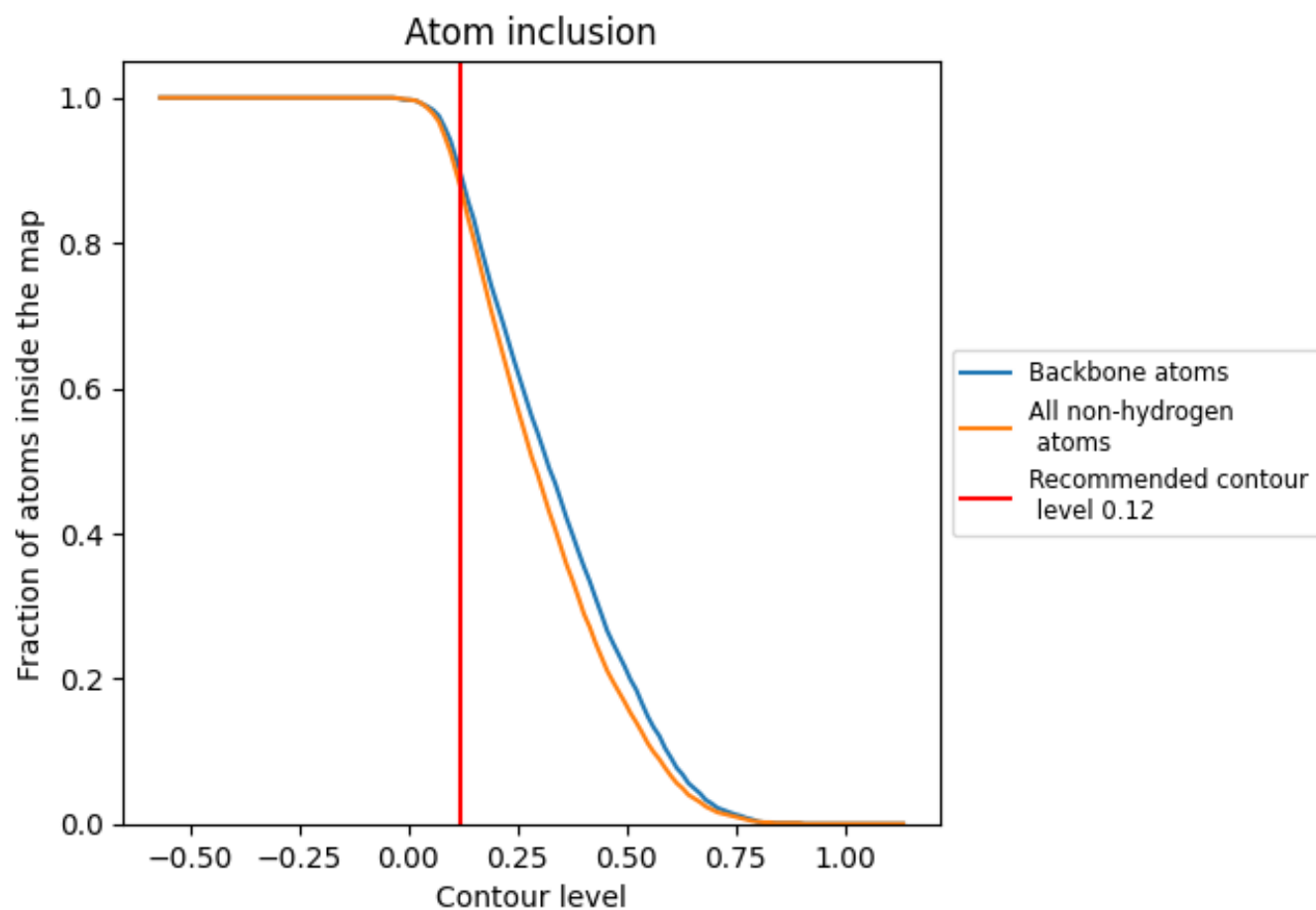
The images above show the model with each residue coloured according to its Q-score. This shows their resolvability in the map with higher Q-score values reflecting better resolvability. Please note: Q-score is calculating the resolvability of atoms, and thus high values are only expected at resolutions at which atoms can be resolved. Low Q-score values may therefore be expected for many entries.

9.3 Atom inclusion mapped to coordinate model [i](#)



The images above show the model with each residue coloured according to its atom inclusion. This shows to what extent they are inside the map at the recommended contour level (0.12).

9.4 Atom inclusion [i](#)



At the recommended contour level, 90% of all backbone atoms, 88% of all non-hydrogen atoms, are inside the map.

9.5 Map-model fit summary ⓘ

The table lists the average atom inclusion at the recommended contour level (0.12) and Q-score for the entire model and for each chain.

Chain	Atom inclusion	Q-score
All	<div></div> 0.8760	<div></div> 0.4950
A	<div></div> 0.9050	<div></div> 0.5120
B	<div></div> 0.9230	<div></div> 0.5320
G	<div></div> 0.7210	<div></div> 0.4510
N	<div></div> 0.9060	<div></div> 0.4860
R	<div></div> 0.8160	<div></div> 0.4500

