



Full wwPDB X-ray Structure Validation Report ⓘ

Apr 4, 2026 – 09:41 PM UTC

PDB ID : 9W13 / pdb_00009w13
Title : Crystal Structure of the ER-alpha Ligand-binding Domain (Y537S) in Complex with ZEN-P
Authors : Peng, R.M.; Min, J.; Li, K.K.
Deposited on : 2025-07-25
Resolution : 2.05 Å(reported)

This is a Full wwPDB X-ray Structure Validation Report for a publicly released PDB entry.

We welcome your comments at validation@mail.wwpdb.org

A user guide is available at

<https://www.wwpdb.org/validation/2017/XrayValidationReportHelp>

with specific help available everywhere you see the ⓘ symbol.

The types of validation reports are described at

<http://www.wwpdb.org/validation/2017/FAQs#types>.

The following versions of software and data (see [references ⓘ](#)) were used in the production of this report:

MolProbity : 4-5-2 with Phenix2.0
Mogul : 2022.3.0, CSD as543be (2022)
Xtriage (Phenix) : 2.0
EDS : 3.0
Buster-report : wwPDB partial adaption of 1.1.7 (2018)
Percentile statistics : 20250101.v01 (using entries in the PDB archive January 1st 2025)
CCP4 : 9.0.010 (Gargrove)
Density-Fitness : 1.0.12
Ideal geometry (proteins) : Engh & Huber (2001)
Ideal geometry (DNA, RNA) : Parkinson et al. (1996)
Validation Pipeline (wwPDB-VP) : 2.49

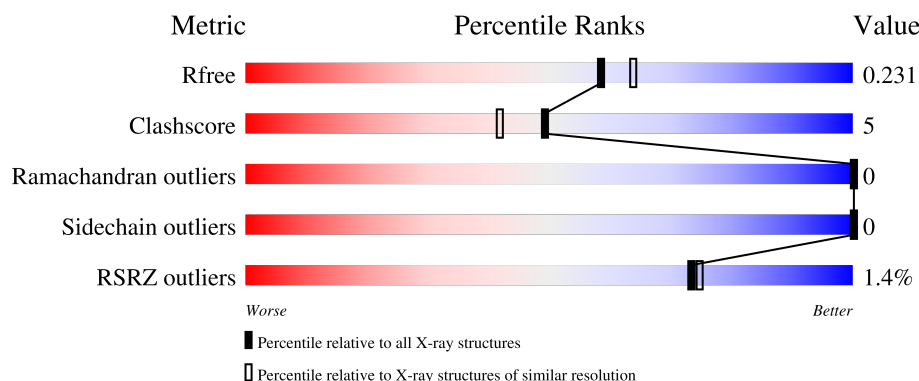
1 Overall quality at a glance

The following experimental techniques were used to determine the structure:

X-RAY DIFFRACTION

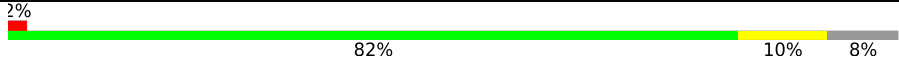

The reported resolution of this entry is 2.05 Å.

Percentile scores (ranging between 0-100) for global validation metrics of the entry are shown in the following graphic. The table shows the number of entries on which the scores are based.



Metric	Whole archive (#Entries)	Similar resolution (#Entries, resolution range(Å))
R_{free}	180053	2260 (2.04-2.04)
Clashscore	190562	2333 (2.04-2.04)
Ramachandran outliers	187476	2318 (2.04-2.04)
Sidechain outliers	187428	2318 (2.04-2.04)
RSRZ outliers	180081	2260 (2.04-2.04)

The table below summarises the geometric issues observed across the polymeric chains and their fit to the electron density. The red, orange, yellow and green segments of the lower bar indicate the fraction of residues that contain outliers for ≥ 3 , 2, 1 and 0 types of geometric quality criteria respectively. A grey segment represents the fraction of residues that are not modelled. The numeric value for each fraction is indicated below the corresponding segment, with a dot representing fractions $\leq 5\%$. The upper red bar (where present) indicates the fraction of residues that have poor fit to the electron density. The numeric value is given above the bar.

Mol	Chain	Length	Quality of chain
1	A	263	
1	B	263	

The following table lists non-polymeric compounds, carbohydrate monomers and non-standard residues in protein, DNA, RNA chains that are outliers for geometric or electron-density-fit criteria:

Mol	Type	Chain	Res	Chirality	Geometry	Clashes	Electron density
3	PEG	B	703	-	-	X	-

2 Entry composition

There are 6 unique types of molecules in this entry. The entry contains 4084 atoms, of which 0 are hydrogens and 0 are deuteriums.

In the tables below, the ZeroOcc column contains the number of atoms modelled with zero occupancy, the AltConf column contains the number of residues with at least one atom in alternate conformation and the Trace column contains the number of residues modelled with at most 2 atoms.

- Molecule 1 is a protein called Estrogen receptor.

Mol	Chain	Residues	Atoms					ZeroOcc	AltConf	Trace
1	A	242	Total	C	N	O	S	0	2	0
			1933	1237	338	339	19			
1	B	250	Total	C	N	O	S	0	0	0
			1984	1270	341	354	19			

There are 28 discrepancies between the modelled and reference sequences:

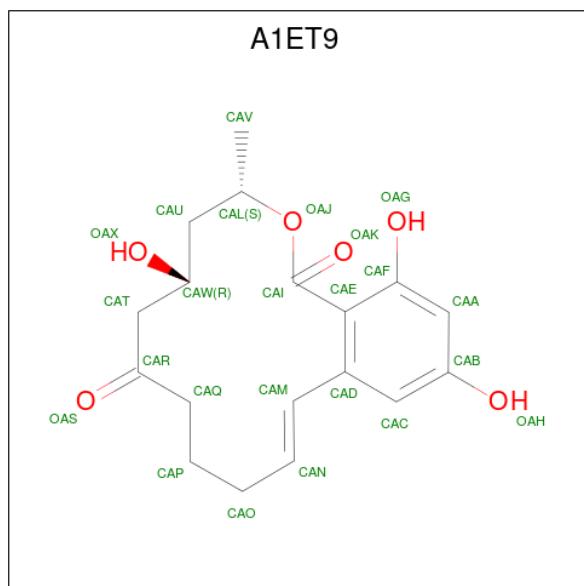
Chain	Residue	Modelled	Actual	Comment	Reference
A	300	GLY	-	expression tag	UNP P03372
A	301	ALA	-	expression tag	UNP P03372
A	302	GLY	-	expression tag	UNP P03372
A	303	ALA	-	expression tag	UNP P03372
A	304	GLY	-	expression tag	UNP P03372
A	537	SER	TYR	engineered mutation	UNP P03372
A	601	ALA	-	expression tag	UNP P03372
A	602	ILE	-	expression tag	UNP P03372
A	603	LEU	-	expression tag	UNP P03372
A	604	HIS	-	expression tag	UNP P03372
A	605	ARG	-	expression tag	UNP P03372
A	606	LEU	-	expression tag	UNP P03372
A	607	LEU	-	expression tag	UNP P03372
A	608	GLN	-	expression tag	UNP P03372
B	300	GLY	-	expression tag	UNP P03372
B	301	ALA	-	expression tag	UNP P03372
B	302	GLY	-	expression tag	UNP P03372
B	303	ALA	-	expression tag	UNP P03372
B	304	GLY	-	expression tag	UNP P03372
B	537	SER	TYR	engineered mutation	UNP P03372
B	601	ALA	-	expression tag	UNP P03372
B	602	ILE	-	expression tag	UNP P03372
B	603	LEU	-	expression tag	UNP P03372
B	604	HIS	-	expression tag	UNP P03372
B	605	ARG	-	expression tag	UNP P03372

Continued on next page...

Continued from previous page...

Chain	Residue	Modelled	Actual	Comment	Reference
B	606	LEU	-	expression tag	UNP P03372
B	607	LEU	-	expression tag	UNP P03372
B	608	GLN	-	expression tag	UNP P03372

- Molecule 2 is (4S,6R,12E)-4-methyl-6,16,18-tris(oxidanyl)-3-oxabicyclo[12.4.0]octadeca-1(14),12,15,17-tetraene-2,8-dione (CCD ID: A1ET9) (formula: C₁₈H₂₂O₆) (labeled as "Ligand of Interest" by depositor).



Mol	Chain	Residues	Atoms			ZeroOcc	AltConf
2	A	1	Total	C	O	0	0
			24	18	6		
2	B	1	Total	C	O	0	0
			24	18	6		

- Molecule 3 is DI(HYDROXYETHYL)ETHER (CCD ID: PEG) (formula: C₄H₁₀O₃).



Mol	Chain	Residues	Atoms			ZeroOcc	AltConf
3	A	1	Total	C	O	0	0
			7	4	3		
3	B	1	Total	C	O	0	0
			7	4	3		

- Molecule 4 is SULFATE ION (CCD ID: SO4) (formula: O₄S).



Mol	Chain	Residues	Atoms			ZeroOcc	AltConf
4	B	1	Total	O	S	0	0
			5	4	1		

- Molecule 5 is 1,2-ETHANEDIOL (CCD ID: EDO) (formula: C₂H₆O₂).



Mol	Chain	Residues	Atoms			ZeroOcc	AltConf
5	B	1	Total	C	O	0	0
			4	2	2		

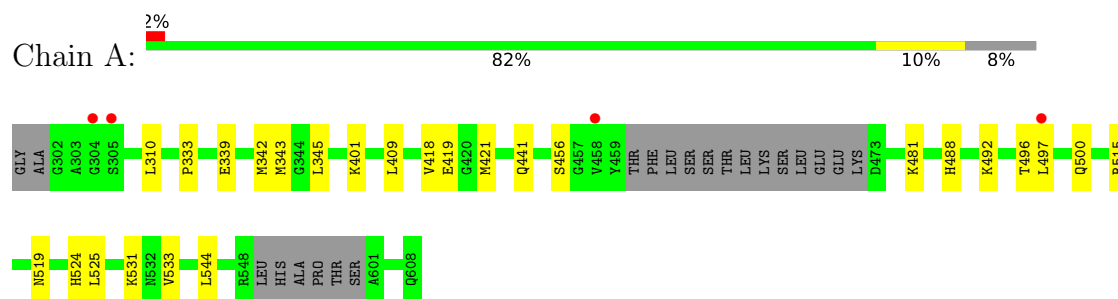
- Molecule 6 is water.

Mol	Chain	Residues	Atoms		ZeroOcc	AltConf
6	A	50	Total	O	0	0
			50	50		
6	B	46	Total	O	0	0
			46	46		

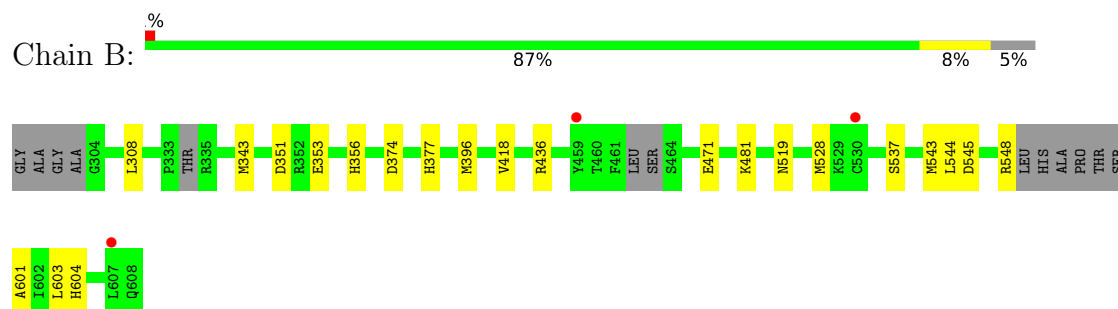
3 Residue-property plots [i](#)

These plots are drawn for all protein, RNA, DNA and oligosaccharide chains in the entry. The first graphic for a chain summarises the proportions of the various outlier classes displayed in the second graphic. The second graphic shows the sequence view annotated by issues in geometry and electron density. Residues are color-coded according to the number of geometric quality criteria for which they contain at least one outlier: green = 0, yellow = 1, orange = 2 and red = 3 or more. A red dot above a residue indicates a poor fit to the electron density ($RSRZ > 2$). Stretches of 2 or more consecutive residues without any outlier are shown as a green connector. Residues present in the sample, but not in the model, are shown in grey.

• Molecule 1: Estrogen receptor



• Molecule 1: Estrogen receptor



4 Data and refinement statistics

Property	Value	Source
Space group	C 2 2 21	Depositor
Cell constants a, b, c, α , β , γ	53.06Å 101.77Å 195.65Å 90.00° 90.00° 90.00°	Depositor
Resolution (Å)	24.69 – 2.05 24.69 – 2.05	Depositor EDS
% Data completeness (in resolution range)	90.2 (24.69-2.05) 90.3 (24.69-2.05)	Depositor EDS
R_{merge}	(Not available)	Depositor
R_{sym}	(Not available)	Depositor
$\langle I/\sigma(I) \rangle$ ¹	3.40 (at 2.04Å)	Xtriage
Refinement program	REFMAC 5.8.0238	Depositor
R, R_{free}	0.180 , 0.224 0.194 , 0.231	Depositor DCC
R_{free} test set	1597 reflections (4.73%)	wwPDB-VP
Wilson B-factor (Å ²)	40.8	Xtriage
Anisotropy	0.097	Xtriage
Bulk solvent k_{sol} (e/Å ³), B_{sol} (Å ²)	0.34 , 38.7	EDS
L-test for twinning ²	$\langle L \rangle = 0.49$, $\langle L^2 \rangle = 0.32$	Xtriage
Estimated twinning fraction	No twinning to report.	Xtriage
F_o, F_c correlation	0.96	EDS
Total number of atoms	4084	wwPDB-VP
Average B, all atoms (Å ²)	52.0	wwPDB-VP

Xtriage's analysis on translational NCS is as follows: *The largest off-origin peak in the Patterson function is 5.27% of the height of the origin peak. No significant pseudotranslation is detected.*

¹Intensities estimated from amplitudes.

²Theoretical values of $\langle |L| \rangle$, $\langle L^2 \rangle$ for acentric reflections are 0.5, 0.333 respectively for untwinned datasets, and 0.375, 0.2 for perfectly twinned datasets.

5 Model quality

5.1 Standard geometry

Bond lengths and bond angles in the following residue types are not validated in this section: PEG, EDO, A1ET9, SO4

The Z score for a bond length (or angle) is the number of standard deviations the observed value is removed from the expected value. A bond length (or angle) with $|Z| > 5$ is considered an outlier worth inspection. RMSZ is the root-mean-square of all Z scores of the bond lengths (or angles).

Mol	Chain	Bond lengths		Bond angles	
		RMSZ	$\# Z > 5$	RMSZ	$\# Z > 5$
1	A	1.06	0/1975	1.40	0/2667
1	B	1.07	0/2018	1.43	0/2722
All	All	1.06	0/3993	1.41	0/5389

There are no bond length outliers.

There are no bond angle outliers.

There are no chirality outliers.

There are no planarity outliers.

5.2 Too-close contacts

In the following table, the Non-H and H(model) columns list the number of non-hydrogen atoms and hydrogen atoms in the chain respectively. The H(added) column lists the number of hydrogen atoms added and optimized by MolProbity. The Clashes column lists the number of clashes within the asymmetric unit, whereas Symm-Clashes lists symmetry-related clashes.

Mol	Chain	Non-H	H(model)	H(added)	Clashes	Symm-Clashes
1	A	1933	0	1988	18	0
1	B	1984	0	2033	25	0
2	A	24	0	0	2	0
2	B	24	0	0	2	0
3	A	7	0	10	1	0
3	B	7	0	10	5	0
4	B	5	0	0	0	0
5	B	4	0	6	0	0
6	A	50	0	0	0	0
6	B	46	0	0	1	0
All	All	4084	0	4047	43	0

The all-atom clashscore is defined as the number of clashes found per 1000 atoms (including hydrogen atoms). The all-atom clashscore for this structure is 5.

All (43) close contacts within the same asymmetric unit are listed below, sorted by their clash magnitude.

Atom-1	Atom-2	Interatomic distance (Å)	Clash overlap (Å)
1:A:519:ASN:ND2	1:B:519:ASN:HD22	1.68	0.90
1:A:519:ASN:HD22	1:B:519:ASN:ND2	1.68	0.90
1:B:377:HIS:ND1	3:B:703:PEG:C1	2.44	0.81
1:A:519:ASN:HD22	1:B:519:ASN:HD22	0.85	0.79
1:A:419:GLU:OE1	1:A:531:LYS:NZ	2.24	0.68
1:B:356:HIS:HD2	6:B:823:HOH:O	1.78	0.66
1:B:377:HIS:ND1	3:B:703:PEG:H12	2.12	0.65
1:A:544:LEU:C	1:A:544:LEU:HD23	2.24	0.62
1:B:351:ASP:OD1	1:B:537:SER:OG	2.20	0.59
1:A:441:GLN:HG3	3:A:702:PEG:H21	1.83	0.59
1:A:339:GLU:HG2	1:A:533:VAL:HG21	1.85	0.57
1:B:374:ASP:OD2	1:B:471:GLU:OE1	2.23	0.55
1:B:418:VAL:CG1	1:B:528:MET:HE2	2.36	0.55
1:A:401:LYS:HD3	1:A:409:LEU:HD21	1.87	0.55
1:A:343:MET:SD	1:A:421:MET:HE1	2.47	0.55
2:A:701:A1ET9:OAG	2:A:701:A1ET9:OAK	2.24	0.54
1:A:421:MET:HE3	1:A:524:HIS:HE1	1.74	0.53
2:B:701:A1ET9:OAG	2:B:701:A1ET9:OAK	2.17	0.53
1:B:418:VAL:HG11	1:B:528:MET:CE	2.38	0.53
1:A:333:PRO:HB3	1:A:345:LEU:HD11	1.90	0.52
1:B:377:HIS:ND1	3:B:703:PEG:C2	2.73	0.52
1:A:525:LEU:HG	1:A:544:LEU:HD12	1.92	0.51
1:B:418:VAL:CG1	1:B:528:MET:CE	2.89	0.51
1:B:377:HIS:ND1	3:B:703:PEG:H11	2.24	0.51
1:A:488:HIS:NE2	1:A:492:LYS:HE3	2.25	0.50
1:B:308:LEU:O	1:B:481:LYS:CE	2.60	0.50
1:B:543:MET:HE2	1:B:603:LEU:HD13	1.96	0.47
1:B:396:MET:HE3	1:B:436:ARG:HA	1.97	0.47
1:B:418:VAL:HG11	1:B:528:MET:HE2	1.97	0.47
1:B:601:ALA:HB1	1:B:604:HIS:HB2	1.95	0.47
1:A:456:SER:HA	1:A:515:ARG:NH2	2.31	0.46
1:B:308:LEU:O	1:B:481:LYS:HE2	2.15	0.46
1:B:377:HIS:CE1	3:B:703:PEG:H11	2.50	0.46
1:B:353:GLU:OE1	2:B:701:A1ET9:OAH	2.35	0.45
2:A:701:A1ET9:CAM	2:A:701:A1ET9:OAJ	2.66	0.44
1:B:343:MET:HE2	1:B:528:MET:SD	2.58	0.43
1:B:308:LEU:O	1:B:481:LYS:HE3	2.19	0.43

Continued on next page...

Continued from previous page...

Atom-1	Atom-2	Interatomic distance (Å)	Clash overlap (Å)
1:B:544:LEU:HD22	1:B:544:LEU:O	2.19	0.43
1:B:545:ASP:O	1:B:548:ARG:NH1	2.52	0.42
1:A:310:LEU:O	1:A:481:LYS:HE2	2.19	0.42
1:A:342:MET:HG2	1:A:418:VAL:CG2	2.51	0.41
1:A:496:THR:O	1:A:500:GLN:HG3	2.21	0.41
1:A:497:LEU:HD23	1:A:497:LEU:HA	1.85	0.40

There are no symmetry-related clashes.

5.3 Torsion angles [i](#)

5.3.1 Protein backbone [i](#)

In the following table, the Percentiles column shows the percent Ramachandran outliers of the chain as a percentile score with respect to all X-ray entries followed by that with respect to entries of similar resolution.

The Analysed column shows the number of residues for which the backbone conformation was analysed, and the total number of residues.

Mol	Chain	Analysed	Favoured	Allowed	Outliers	Percentiles	
1	A	238/263 (90%)	233 (98%)	5 (2%)	0	100	100
1	B	242/263 (92%)	237 (98%)	5 (2%)	0	100	100
All	All	480/526 (91%)	470 (98%)	10 (2%)	0	100	100

There are no Ramachandran outliers to report.

5.3.2 Protein sidechains [i](#)

In the following table, the Percentiles column shows the percent sidechain outliers of the chain as a percentile score with respect to all X-ray entries followed by that with respect to entries of similar resolution.

The Analysed column shows the number of residues for which the sidechain conformation was analysed, and the total number of residues.

Mol	Chain	Analysed	Rotameric	Outliers	Percentiles	
1	A	216/232 (93%)	216 (100%)	0	100	100
1	B	222/232 (96%)	222 (100%)	0	100	100

Continued on next page...

Continued from previous page...

Mol	Chain	Analysed	Rotameric	Outliers	Percentiles	
All	All	438/464 (94%)	438 (100%)	0	100	100

There are no protein residues with a non-rotameric sidechain to report.

Sometimes sidechains can be flipped to improve hydrogen bonding and reduce clashes. All (4) such sidechains are listed below:

Mol	Chain	Res	Type
1	B	488	HIS
1	B	513	HIS
1	B	519	ASN
1	B	604	HIS

5.3.3 RNA [i](#)

There are no RNA molecules in this entry.

5.4 Non-standard residues in protein, DNA, RNA chains [i](#)

There are no non-standard protein/DNA/RNA residues in this entry.

5.5 Carbohydrates [i](#)

There are no oligosaccharides in this entry.

5.6 Ligand geometry [i](#)

6 ligands are modelled in this entry.

In the following table, the Counts columns list the number of bonds (or angles) for which Mogul statistics could be retrieved, the number of bonds (or angles) that are observed in the model and the number of bonds (or angles) that are defined in the Chemical Component Dictionary. The Link column lists molecule types, if any, to which the group is linked. The Z score for a bond length (or angle) is the number of standard deviations the observed value is removed from the expected value. A bond length (or angle) with $|Z| > 2$ is considered an outlier worth inspection. RMSZ is the root-mean-square of all Z scores of the bond lengths (or angles).

Mol	Type	Chain	Res	Link	Bond lengths			Bond angles		
					Counts	RMSZ	$\# Z > 2$	Counts	RMSZ	$\# Z > 2$
3	PEG	A	702	-	6,6,6	0.18	0	5,5,5	0.11	0
5	EDO	B	704	-	3,3,3	0.32	0	2,2,2	0.38	0

Mol	Type	Chain	Res	Link	Bond lengths			Bond angles		
					Counts	RMSZ	# Z > 2	Counts	RMSZ	# Z > 2
4	SO4	B	702	-	4,4,4	0.31	0	6,6,6	0.11	0
3	PEG	B	703	-	6,6,6	0.20	0	5,5,5	0.20	0
2	A1ET9	B	701	-	25,25,25	2.43	8 (32%)	33,34,34	3.52	8 (24%)
2	A1ET9	A	701	-	25,25,25	2.06	7 (28%)	33,34,34	3.50	11 (33%)

In the following table, the Chirals column lists the number of chiral outliers, the number of chiral centers analysed, the number of these observed in the model and the number defined in the Chemical Component Dictionary. Similar counts are reported in the Torsion and Rings columns. '-' means no outliers of that kind were identified.

Mol	Type	Chain	Res	Link	Chirals	Torsions	Rings
3	PEG	A	702	-	-	3/4/4/4	-
5	EDO	B	704	-	-	0/1/1/1	-
3	PEG	B	703	-	-	4/4/4/4	-
2	A1ET9	B	701	-	-	7/24/24/24	0/1/2/2
2	A1ET9	A	701	-	-	7/24/24/24	0/1/2/2

All (15) bond length outliers are listed below:

Mol	Chain	Res	Type	Atoms	Z	Observed(Å)	Ideal(Å)
2	B	701	A1ET9	CAT-CAR	-8.32	1.39	1.51
2	A	701	A1ET9	CAT-CAR	-5.87	1.43	1.51
2	B	701	A1ET9	CAD-CAM	-4.39	1.40	1.47
2	A	701	A1ET9	CAE-CAI	-4.14	1.40	1.50
2	B	701	A1ET9	CAE-CAI	-4.06	1.41	1.50
2	A	701	A1ET9	CAD-CAM	-3.23	1.42	1.47
2	A	701	A1ET9	CAM-CAN	2.78	1.40	1.31
2	A	701	A1ET9	CAQ-CAR	-2.73	1.43	1.51
2	A	701	A1ET9	CAU-CAW	2.65	1.58	1.52
2	B	701	A1ET9	CAQ-CAR	-2.57	1.43	1.51
2	A	701	A1ET9	CAA-CAF	-2.53	1.35	1.38
2	B	701	A1ET9	CAM-CAN	2.30	1.38	1.31
2	B	701	A1ET9	OAJ-CAL	-2.27	1.43	1.47
2	B	701	A1ET9	CAU-CAW	2.10	1.57	1.52
2	B	701	A1ET9	CAA-CAF	-2.04	1.36	1.38

All (19) bond angle outliers are listed below:

Mol	Chain	Res	Type	Atoms	Z	Observed(°)	Ideal(°)
2	B	701	A1ET9	CAL-CAU-CAW	-18.27	98.05	114.99
2	A	701	A1ET9	CAL-CAU-CAW	-17.66	98.61	114.99

Continued on next page...

Continued from previous page...

Mol	Chain	Res	Type	Atoms	Z	Observed(°)	Ideal(°)
2	A	701	A1ET9	CAD-CAM-CAN	-4.08	116.94	125.55
2	A	701	A1ET9	CAU-CAW-CAT	3.81	120.74	112.96
2	B	701	A1ET9	CAL-OAJ-CAI	-3.71	110.75	117.67
2	B	701	A1ET9	CAD-CAM-CAN	-3.40	118.37	125.55
2	B	701	A1ET9	CAO-CAN-CAM	-3.25	118.28	125.48
2	A	701	A1ET9	OAS-CAR-CAT	-2.91	116.56	121.53
2	B	701	A1ET9	CAU-CAW-CAT	2.85	118.79	112.96
2	A	701	A1ET9	CAQ-CAR-CAT	2.45	122.75	117.19
2	A	701	A1ET9	CAD-CAC-CAB	-2.43	118.38	120.92
2	A	701	A1ET9	CAF-CAA-CAB	2.34	121.84	119.67
2	B	701	A1ET9	CAD-CAC-CAB	-2.32	118.49	120.92
2	A	701	A1ET9	CAQ-CAP-CAO	-2.24	108.47	113.35
2	A	701	A1ET9	OAJ-CAL-CAV	2.14	112.75	107.96
2	B	701	A1ET9	OAG-CAF-CAE	-2.12	117.22	121.14
2	A	701	A1ET9	OAJ-CAI-CAE	2.03	118.63	113.53
2	B	701	A1ET9	OAJ-CAI-CAE	2.02	118.61	113.53
2	A	701	A1ET9	OAH-CAB-CAC	2.01	125.12	119.85

There are no chirality outliers.

All (21) torsion outliers are listed below:

Mol	Chain	Res	Type	Atoms
2	A	701	A1ET9	CAR-CAT-CAW-CAU
2	B	701	A1ET9	CAR-CAT-CAW-CAU
2	B	701	A1ET9	CAR-CAT-CAW-OAX
3	A	702	PEG	O1-C1-C2-O2
2	A	701	A1ET9	CAL-CAU-CAW-OAX
3	B	703	PEG	O1-C1-C2-O2
3	B	703	PEG	O2-C3-C4-O4
2	A	701	A1ET9	CAL-CAU-CAW-CAT
3	A	702	PEG	C4-C3-O2-C2
2	A	701	A1ET9	CAV-CAL-CAU-CAW
2	B	701	A1ET9	CAV-CAL-CAU-CAW
3	A	702	PEG	O2-C3-C4-O4
2	B	701	A1ET9	CAL-CAU-CAW-OAX
3	B	703	PEG	C4-C3-O2-C2
2	B	701	A1ET9	CAC-CAD-CAM-CAN
2	A	701	A1ET9	CAE-CAD-CAM-CAN
2	B	701	A1ET9	CAE-CAD-CAM-CAN
2	A	701	A1ET9	CAC-CAD-CAM-CAN
3	B	703	PEG	C1-C2-O2-C3
2	A	701	A1ET9	OAS-CAR-CAT-CAW

Continued on next page...

Continued from previous page...

Mol	Chain	Res	Type	Atoms
2	B	701	A1ET9	OAJ-CAL-CAU-CAW

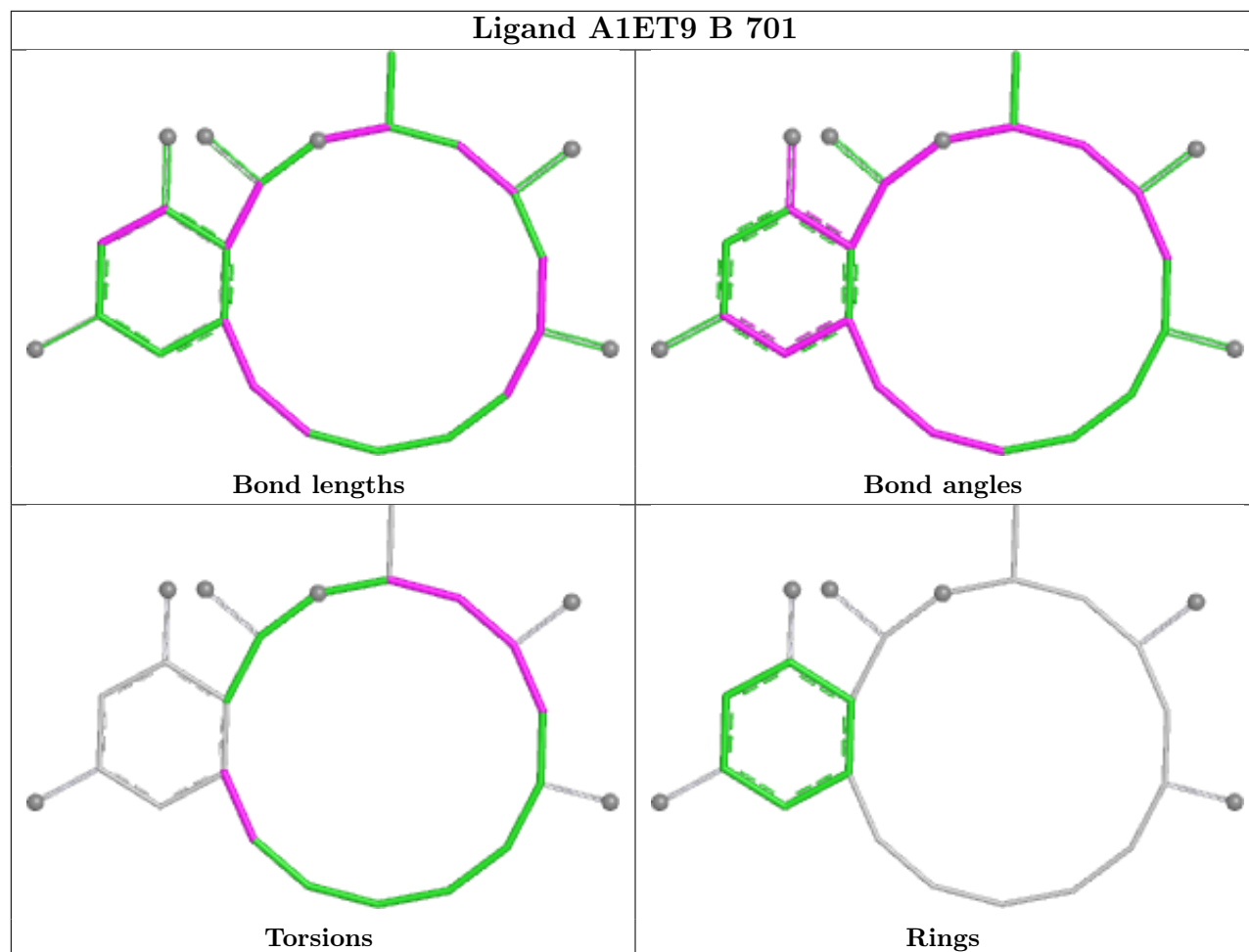
There are no ring outliers.

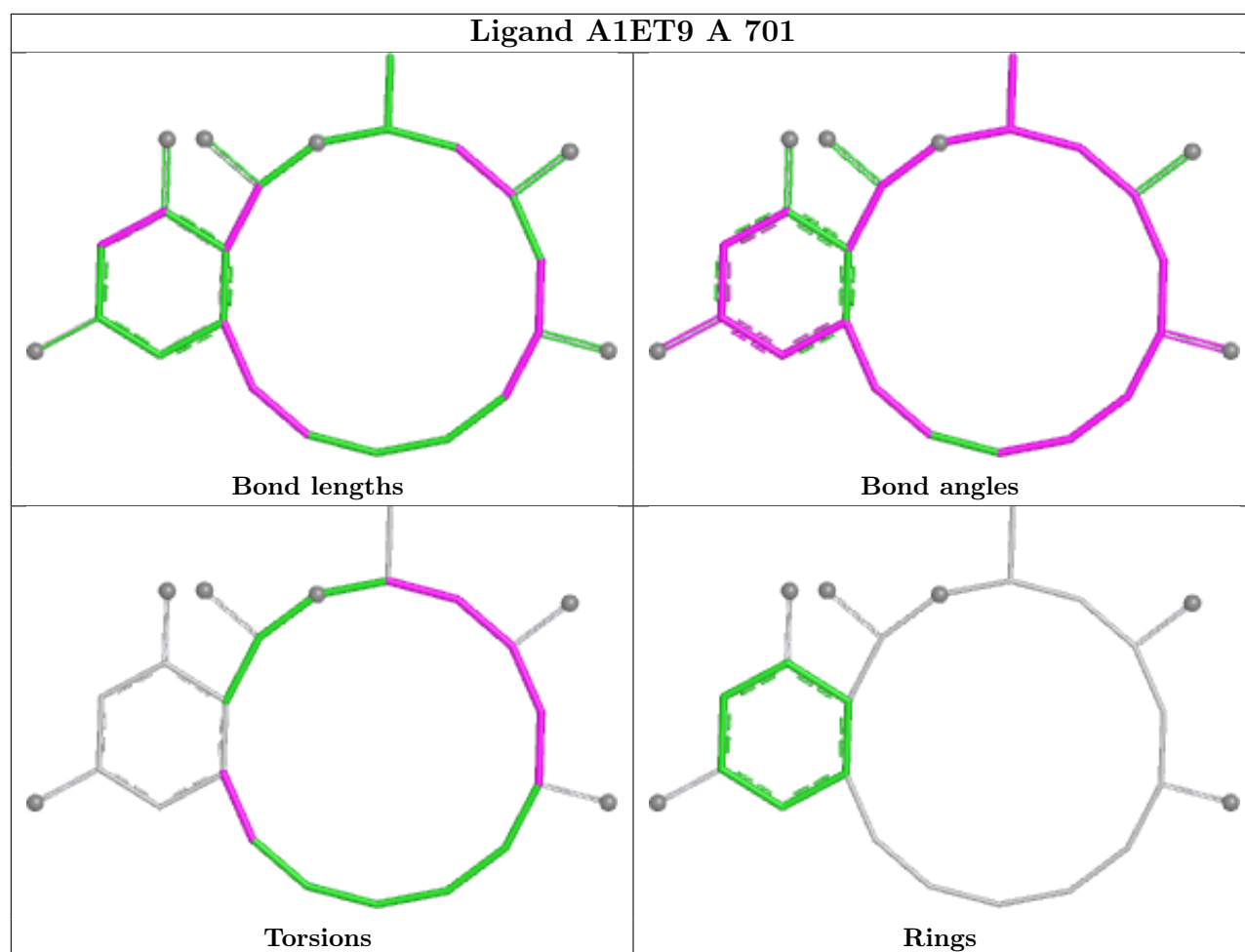
4 monomers are involved in 10 short contacts:

Mol	Chain	Res	Type	Clashes	Symm-Clashes
3	A	702	PEG	1	0
3	B	703	PEG	5	0
2	B	701	A1ET9	2	0
2	A	701	A1ET9	2	0

The following is a two-dimensional graphical depiction of Mogul quality analysis of bond lengths, bond angles, torsion angles, and ring geometry for all instances of the Ligand of Interest. In addition, ligands with molecular weight > 250 and outliers as shown on the validation Tables will also be included. For torsion angles, if less than 5% of the Mogul distribution of torsion angles is within 10 degrees of the torsion angle in question, then that torsion angle is considered an outlier. Any bond that is central to one or more torsion angles identified as an outlier by Mogul will be highlighted in the graph. For rings, the root-mean-square deviation (RMSD) between the ring in question and similar rings identified by Mogul is calculated over all ring torsion angles. If the average RMSD is greater than 60 degrees and the minimal RMSD between the ring in question and any Mogul-identified rings is also greater than 60 degrees, then that ring is considered an outlier. The outliers are highlighted in purple. The color gray indicates Mogul did not find sufficient equivalents in the CSD to analyse the geometry.

Ligand A1ET9 B 701





5.7 Other polymers [i](#)

There are no such residues in this entry.

5.8 Polymer linkage issues [i](#)

There are no chain breaks in this entry.

6 Fit of model and data [i](#)

6.1 Protein, DNA and RNA chains [i](#)

In the following table, the column labelled ‘#RSRZ> 2’ contains the number (and percentage) of RSRZ outliers, followed by percent RSRZ outliers for the chain as percentile scores relative to all X-ray entries and entries of similar resolution. The OWAB column contains the minimum, median, 95th percentile and maximum values of the occupancy-weighted average B-factor per residue. The column labelled ‘Q< 0.9’ lists the number of (and percentage) of residues with an average occupancy less than 0.9.

Mol	Chain	Analysed	<RSRZ>	#RSRZ>2	OWAB(Å ²)	Q<0.9
1	A	242/263 (92%)	-0.09	4 (1%) 69 70	22, 46, 78, 103	2 (0%)
1	B	250/263 (95%)	0.05	3 (1%) 76 78	32, 49, 91, 115	0
All	All	492/526 (93%)	-0.02	7 (1%) 73 75	22, 48, 86, 115	2 (0%)

All (7) RSRZ outliers are listed below:

Mol	Chain	Res	Type	RSRZ
1	A	497	LEU	3.0
1	A	305	SER	2.8
1	B	459	TYR	2.2
1	A	458	VAL	2.2
1	A	304	GLY	2.2
1	B	530	CYS	2.1
1	B	607	LEU	2.1

6.2 Non-standard residues in protein, DNA, RNA chains [i](#)

There are no non-standard protein/DNA/RNA residues in this entry.

6.3 Carbohydrates [i](#)

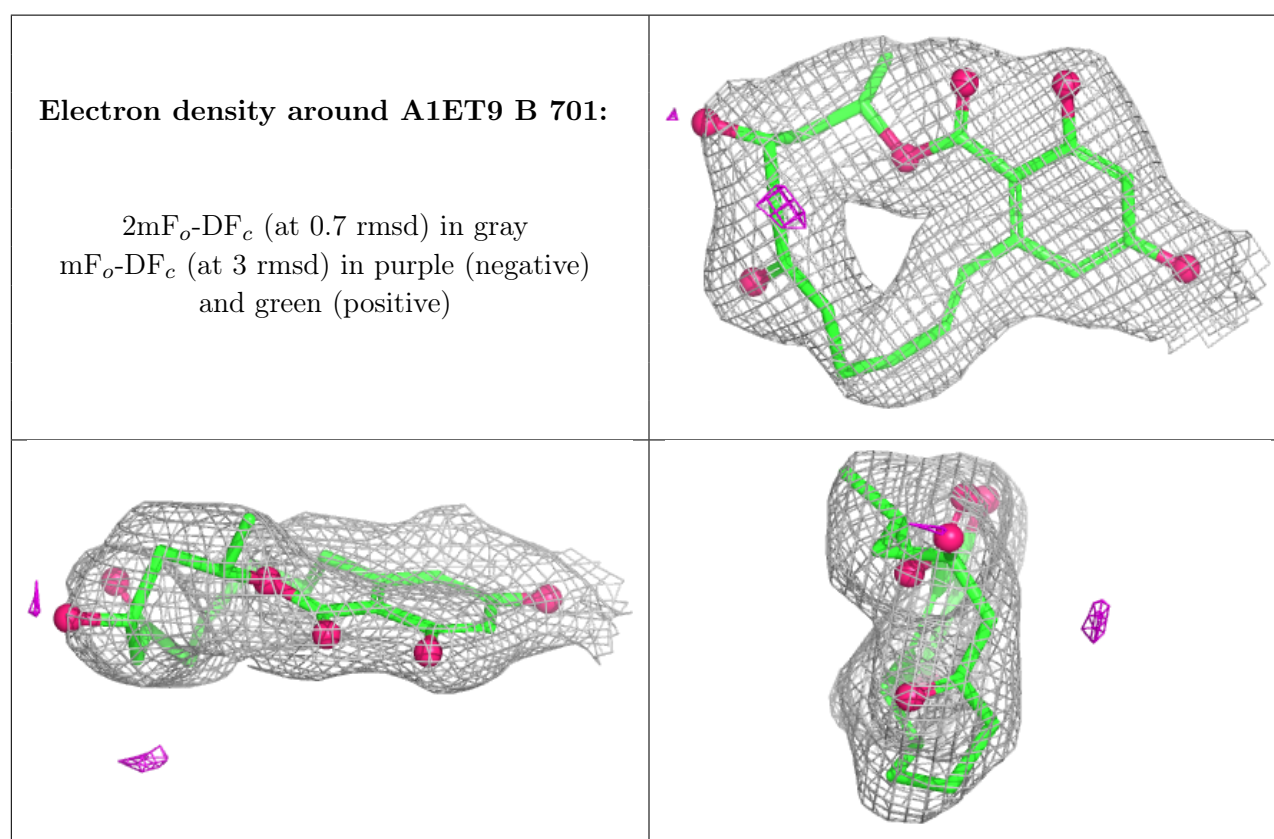
There are no oligosaccharides in this entry.

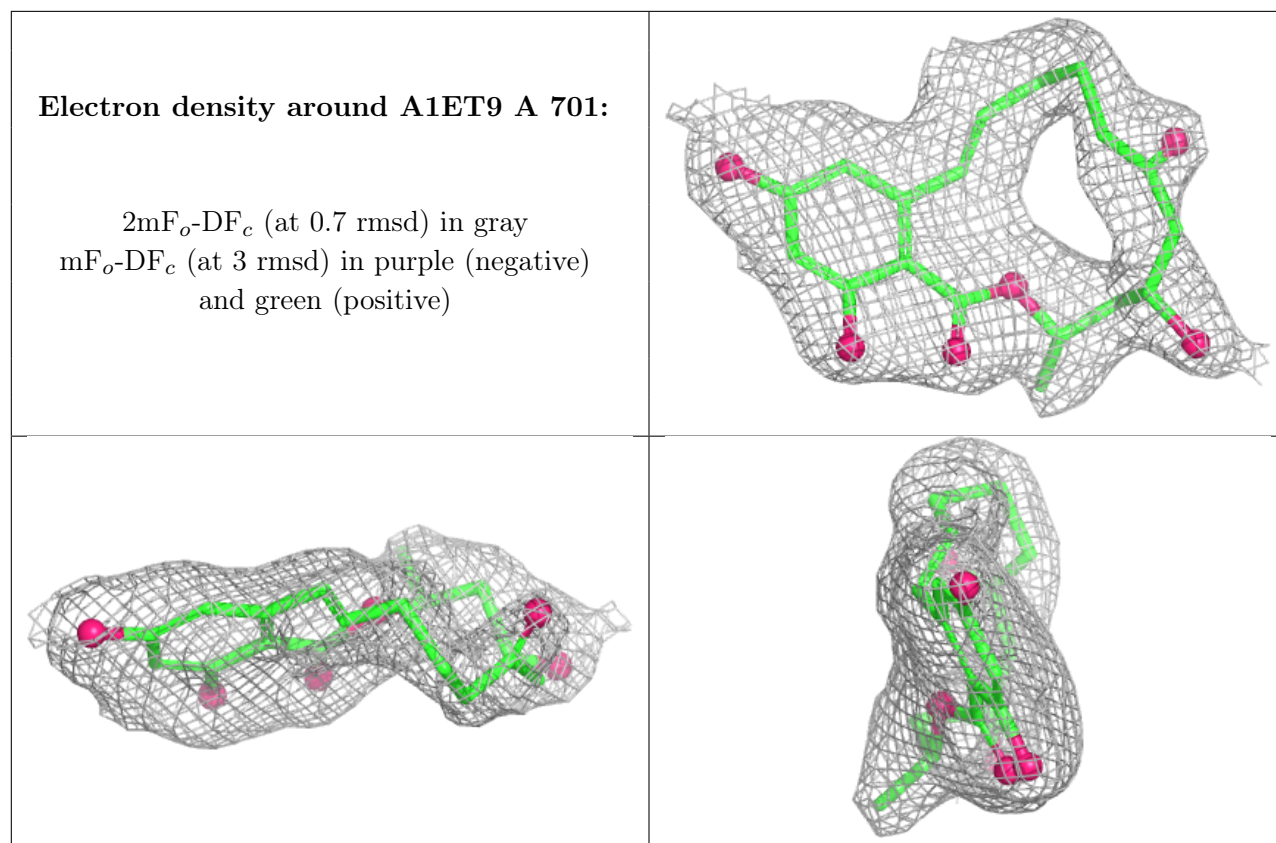
6.4 Ligands [i](#)

In the following table, the Atoms column lists the number of modelled atoms in the group and the number defined in the chemical component dictionary. The B-factors column lists the minimum, median, 95th percentile and maximum values of B factors of atoms in the group. The column labelled ‘Q< 0.9’ lists the number of atoms with occupancy less than 0.9.

Mol	Type	Chain	Res	Atoms	RSCC	RSR	B-factors(\AA^2)	Q<0.9
4	SO4	B	702	5/5	0.80	0.09	81,103,108,115	0
3	PEG	B	703	7/7	0.83	0.09	59,75,77,78	0
3	PEG	A	702	7/7	0.90	0.11	70,74,83,83	0
5	EDO	B	704	4/4	0.92	0.08	57,58,59,62	0
2	A1ET9	B	701	24/24	0.93	0.09	41,48,59,65	0
2	A1ET9	A	701	24/24	0.95	0.07	35,41,48,51	0

The following is a graphical depiction of the model fit to experimental electron density of all instances of the Ligand of Interest. In addition, ligands with molecular weight > 250 and outliers as shown on the geometry validation Tables will also be included. Each fit is shown from different orientation to approximate a three-dimensional view.





6.5 Other polymers ⓘ

There are no such residues in this entry.