



Full wwPDB X-ray Structure Validation Report ⓘ

Apr 9, 2026 – 10:05 PM UTC

PDB ID : 9UZ3 / pdb_00009uz3
Title : Crystal structure of the indoleamine 2,3-dioxygenase 2 (IDO2) complexed with D-Trp
Authors : Takahashi, A.; Inoue, T.; Fukuda, Y.; Adachi, N.
Deposited on : 2025-05-16
Resolution : 2.50 Å(reported)

This is a Full wwPDB X-ray Structure Validation Report for a publicly released PDB entry.

We welcome your comments at validation@mail.wwpdb.org

A user guide is available at

<https://www.wwpdb.org/validation/2017/XrayValidationReportHelp>

with specific help available everywhere you see the ⓘ symbol.

The types of validation reports are described at

<http://www.wwpdb.org/validation/2017/FAQs#types>.

The following versions of software and data (see [references ⓘ](#)) were used in the production of this report:

MolProbity	:	4-5-2 with Phenix2.0
Mogul	:	2022.3.0, CSD as543be (2022)
Xtriage (Phenix)	:	2.0
EDS	:	3.0
Buster-report	:	wwPDB partial adaption of 1.1.7 (2018)
Percentile statistics	:	20250101.v01 (using entries in the PDB archive January 1st 2025)
CCP4	:	9.0.010 (Gargrove)
Density-Fitness	:	1.0.12
Ideal geometry (proteins)	:	Engh & Huber (2001)
Ideal geometry (DNA, RNA)	:	Parkinson et al. (1996)
Validation Pipeline (wwPDB-VP)	:	2.49

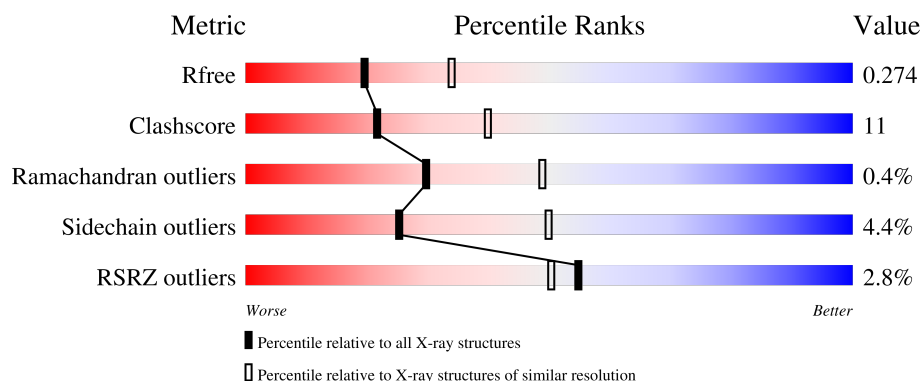
1 Overall quality at a glance

The following experimental techniques were used to determine the structure:

X-RAY DIFFRACTION


The reported resolution of this entry is 2.50 Å.

Percentile scores (ranging between 0-100) for global validation metrics of the entry are shown in the following graphic. The table shows the number of entries on which the scores are based.



Metric	Whole archive (#Entries)	Similar resolution (#Entries, resolution range(Å))
R_{free}	180053	5829 (2.50-2.50)
Clashscore	190562	6492 (2.50-2.50)
Ramachandran outliers	187476	6378 (2.50-2.50)
Sidechain outliers	187428	6380 (2.50-2.50)
RSRZ outliers	180081	5833 (2.50-2.50)

The table below summarises the geometric issues observed across the polymeric chains and their fit to the electron density. The red, orange, yellow and green segments of the lower bar indicate the fraction of residues that contain outliers for ≥ 3 , 2, 1 and 0 types of geometric quality criteria respectively. A grey segment represents the fraction of residues that are not modelled. The numeric value for each fraction is indicated below the corresponding segment, with a dot representing fractions $\leq 5\%$. The upper red bar (where present) indicates the fraction of residues that have poor fit to the electron density. The numeric value is given above the bar.

Mol	Chain	Length	Quality of chain
1	A	782	 3% 69% 25% • 5%
2	B	2	 50% 50%

The following table lists non-polymeric compounds, carbohydrate monomers and non-standard residues in protein, DNA, RNA chains that are outliers for geometric or electron-density-fit criteria:

Mol	Type	Chain	Res	Chirality	Geometry	Clashes	Electron density
4	CYN	A	802	-	-	X	-

2 Entry composition

There are 8 unique types of molecules in this entry. The entry contains 6073 atoms, of which 0 are hydrogens and 0 are deuteriums.

In the tables below, the ZeroOcc column contains the number of atoms modelled with zero occupancy, the AltConf column contains the number of residues with at least one atom in alternate conformation and the Trace column contains the number of residues modelled with at most 2 atoms.

- Molecule 1 is a protein called Maltose/maltodextrin-binding periplasmic protein,Indoleamine 2,3-dioxygenase 2.

Mol	Chain	Residues	Atoms					ZeroOcc	AltConf	Trace
1	A	745	Total	C	N	O	S	0	0	0
			5829	3753	964	1093	19			

There are 19 discrepancies between the modelled and reference sequences:

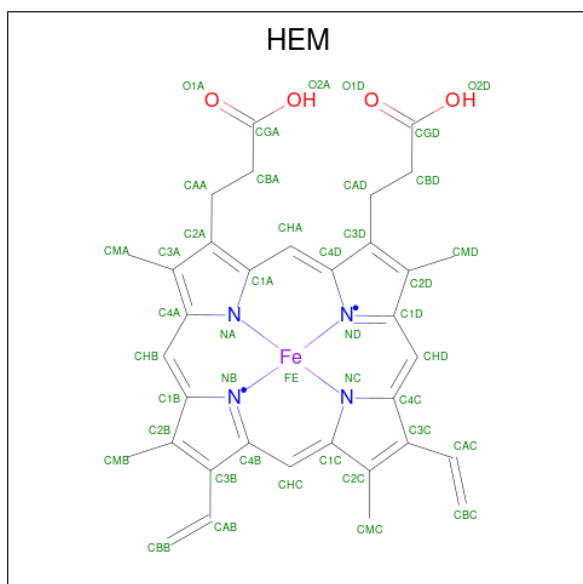
Chain	Residue	Modelled	Actual	Comment	Reference
A	-17	MET	-	initiating methionine	UNP P0AEY0
A	-16	GLY	-	expression tag	UNP P0AEY0
A	-15	SER	-	expression tag	UNP P0AEY0
A	-14	SER	-	expression tag	UNP P0AEY0
A	-13	HIS	-	expression tag	UNP P0AEY0
A	-12	HIS	-	expression tag	UNP P0AEY0
A	-11	HIS	-	expression tag	UNP P0AEY0
A	-10	HIS	-	expression tag	UNP P0AEY0
A	-9	HIS	-	expression tag	UNP P0AEY0
A	-8	HIS	-	expression tag	UNP P0AEY0
A	-7	GLU	-	expression tag	UNP P0AEY0
A	-6	ASN	-	expression tag	UNP P0AEY0
A	-5	LEU	-	expression tag	UNP P0AEY0
A	-4	TYR	-	expression tag	UNP P0AEY0
A	-3	PHE	-	expression tag	UNP P0AEY0
A	-2	GLN	-	expression tag	UNP P0AEY0
A	-1	GLY	-	expression tag	UNP P0AEY0
A	0	MET	-	expression tag	UNP P0AEY0
A	312	VAL	ALA	conflict	UNP P0AEY0

- Molecule 2 is an oligosaccharide called alpha-D-glucopyranose-(1-4)-alpha-D-glucopyranose.



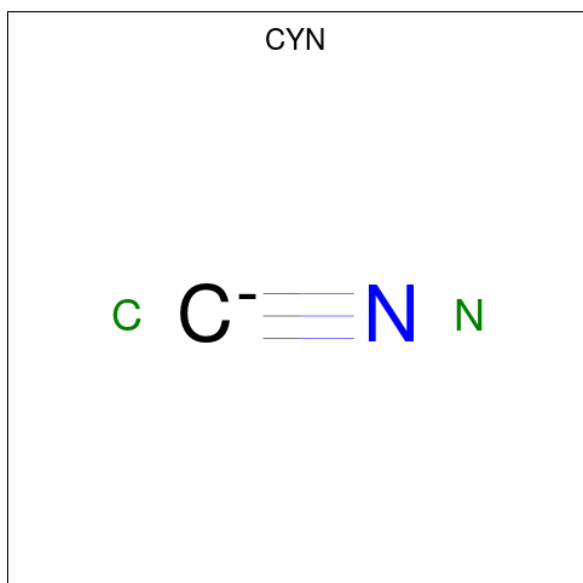
Mol	Chain	Residues	Atoms			ZeroOcc	AltConf	Trace
2	B	2	Total	C	O	0	0	0
			23	12	11			

- Molecule 3 is PROTOPORPHYRIN IX CONTAINING FE (CCD ID: HEM) (formula: $C_{34}H_{32}FeN_4O_4$) (labeled as "Ligand of Interest" by depositor).



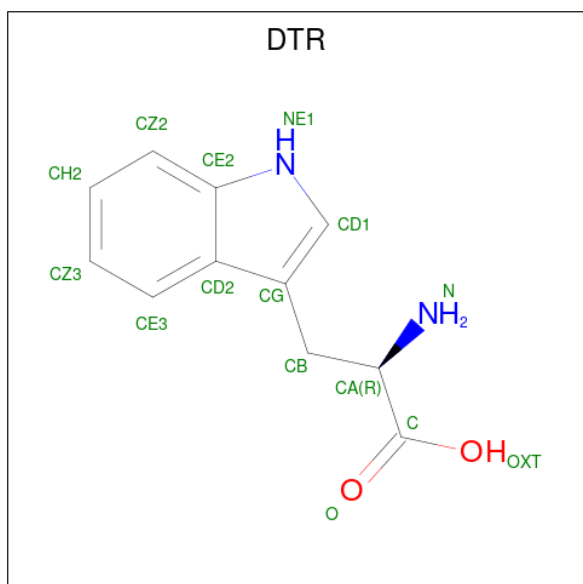
Mol	Chain	Residues	Atoms					ZeroOcc	AltConf
3	A	1	Total	C	Fe	N	O	0	0
			43	34	1	4	4		

- Molecule 4 is CYANIDE ION (CCD ID: CYN) (formula: CN) (labeled as "Ligand of Interest" by depositor).



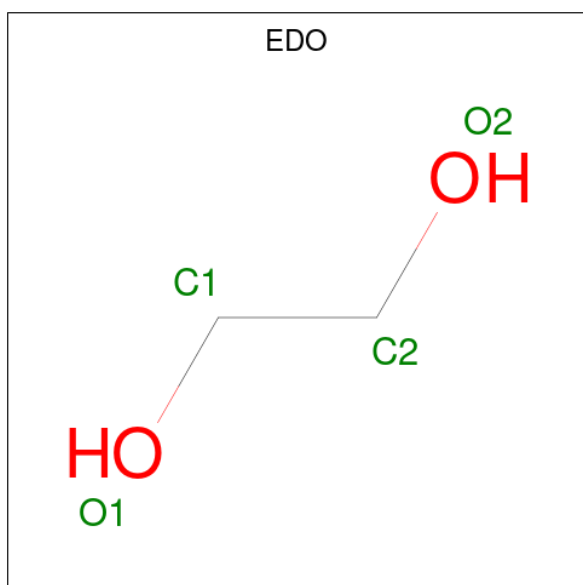
Mol	Chain	Residues	Atoms			ZeroOcc	AltConf
4	A	1	Total	C	N	0	0
			2	1	1		

- Molecule 5 is D-TRYPTOPHAN (CCD ID: DTR) (formula: $C_{11}H_{12}N_2O_2$) (labeled as "Ligand of Interest" by depositor).



Mol	Chain	Residues	Atoms				ZeroOcc	AltConf
5	A	1	Total	C	N	O	0	0
			15	11	2	2		

- Molecule 6 is 1,2-ETHANEDIOL (CCD ID: EDO) (formula: $C_2H_6O_2$).



Mol	Chain	Residues	Atoms	ZeroOcc	AltConf
6	A	1	Total C O 4 2 2	0	0
6	A	1	Total C O 4 2 2	0	0
6	A	1	Total C O 4 2 2	0	0
6	A	1	Total C O 4 2 2	0	0

- Molecule 7 is SODIUM ION (CCD ID: NA) (formula: Na).

Mol	Chain	Residues	Atoms	ZeroOcc	AltConf
7	A	1	Total Na 1 1	0	0

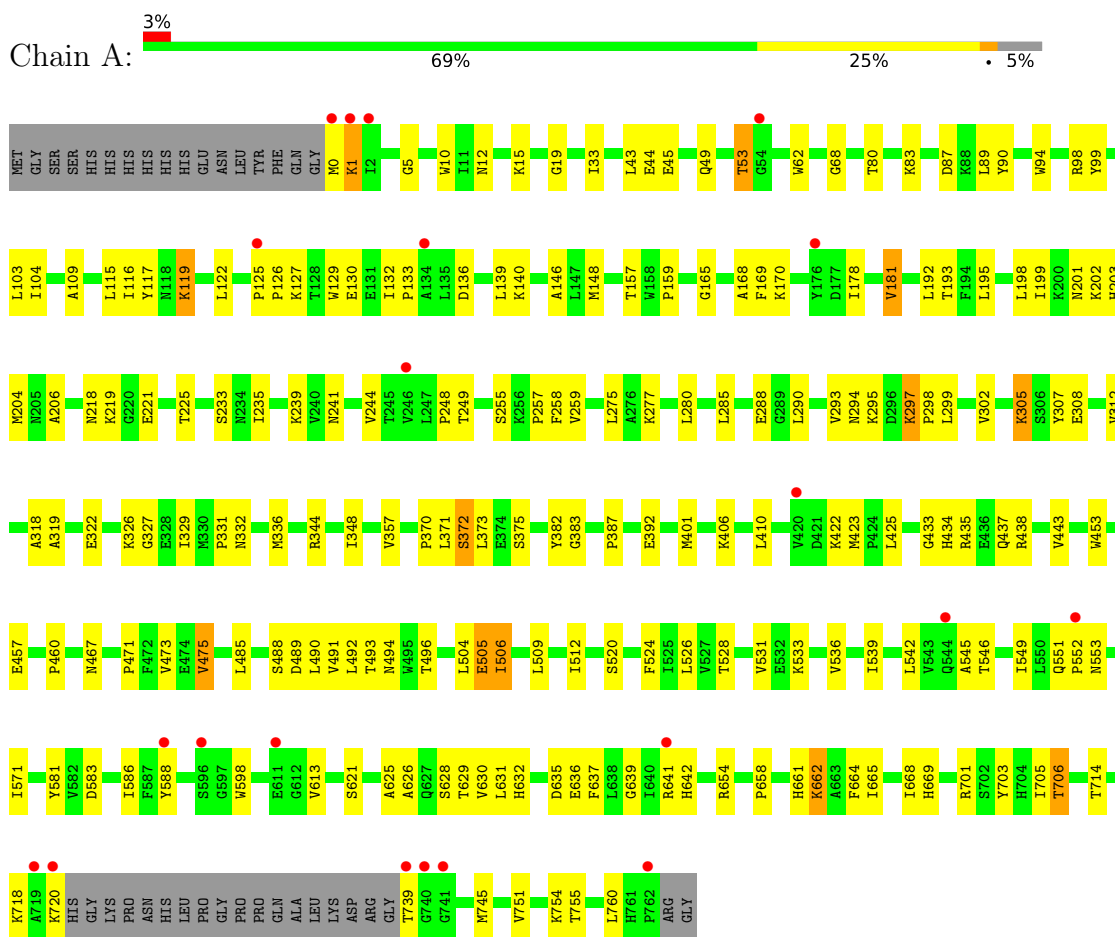
- Molecule 8 is water.

Mol	Chain	Residues	Atoms	ZeroOcc	AltConf
8	A	144	Total O 144 144	0	0

3 Residue-property plots

These plots are drawn for all protein, RNA, DNA and oligosaccharide chains in the entry. The first graphic for a chain summarises the proportions of the various outlier classes displayed in the second graphic. The second graphic shows the sequence view annotated by issues in geometry and electron density. Residues are color-coded according to the number of geometric quality criteria for which they contain at least one outlier: green = 0, yellow = 1, orange = 2 and red = 3 or more. A red dot above a residue indicates a poor fit to the electron density ($RSRZ > 2$). Stretches of 2 or more consecutive residues without any outlier are shown as a green connector. Residues present in the sample, but not in the model, are shown in grey.

- Molecule 1: Maltose/maltodextrin-binding periplasmic protein,Indoleamine 2,3-dioxygenase 2



- Molecule 2: alpha-D-glucopyranose-(1-4)-alpha-D-glucopyranose



4 Data and refinement statistics

Property	Value	Source
Space group	P 31 2 1	Depositor
Cell constants a, b, c, α , β , γ	197.83Å 197.83Å 94.09Å 90.00° 90.00° 120.00°	Depositor
Resolution (Å)	42.42 – 2.50 42.42 – 2.50	Depositor EDS
% Data completeness (in resolution range)	99.8 (42.42-2.50) 99.8 (42.42-2.50)	Depositor EDS
R_{merge}	(Not available)	Depositor
R_{sym}	(Not available)	Depositor
$\langle I/\sigma(I) \rangle$ ¹	1.47 (at 2.51Å)	Xtriage
Refinement program	PHENIX (1.20.1_4487: ???)	Depositor
R, R_{free}	0.239 , 0.275 0.240 , 0.274	Depositor DCC
R_{free} test set	3796 reflections (5.18%)	wwPDB-VP
Wilson B-factor (Å ²)	77.3	Xtriage
Anisotropy	0.216	Xtriage
Bulk solvent k_{sol} (e/Å ³), B_{sol} (Å ²)	0.28 , 45.8	EDS
L-test for twinning ²	$\langle L \rangle = 0.50$, $\langle L^2 \rangle = 0.33$	Xtriage
Estimated twinning fraction	0.022 for -h,-k,l	Xtriage
F_o, F_c correlation	0.95	EDS
Total number of atoms	6073	wwPDB-VP
Average B, all atoms (Å ²)	85.0	wwPDB-VP

Xtriage's analysis on translational NCS is as follows: *The largest off-origin peak in the Patterson function is 3.15% of the height of the origin peak. No significant pseudotranslation is detected.*

¹Intensities estimated from amplitudes.

²Theoretical values of $\langle |L| \rangle$, $\langle L^2 \rangle$ for acentric reflections are 0.5, 0.333 respectively for untwinned datasets, and 0.375, 0.2 for perfectly twinned datasets.

5 Model quality [i](#)

5.1 Standard geometry [i](#)

Bond lengths and bond angles in the following residue types are not validated in this section: EDO, CYN, HEM, DTR, GLC, NA

The Z score for a bond length (or angle) is the number of standard deviations the observed value is removed from the expected value. A bond length (or angle) with $|Z| > 5$ is considered an outlier worth inspection. RMSZ is the root-mean-square of all Z scores of the bond lengths (or angles).

Mol	Chain	Bond lengths		Bond angles	
		RMSZ	$\# Z > 5$	RMSZ	$\# Z > 5$
1	A	0.43	0/5972	0.63	2/8111 (0.0%)

There are no bond length outliers.

All (2) bond angle outliers are listed below:

Mol	Chain	Res	Type	Atoms	Z	Observed($^{\circ}$)	Ideal($^{\circ}$)
1	A	422	LYS	CA-C-N	5.52	128.33	120.49
1	A	422	LYS	C-N-CA	5.52	128.33	120.49

There are no chirality outliers.

There are no planarity outliers.

5.2 Too-close contacts [i](#)

In the following table, the Non-H and H(model) columns list the number of non-hydrogen atoms and hydrogen atoms in the chain respectively. The H(added) column lists the number of hydrogen atoms added and optimized by MolProbity. The Clashes column lists the number of clashes within the asymmetric unit, whereas Symm-Clashes lists symmetry-related clashes.

Mol	Chain	Non-H	H(model)	H(added)	Clashes	Symm-Clashes
1	A	5829	0	5811	127	0
2	B	23	0	21	0	0
3	A	43	0	30	2	0
4	A	2	0	0	2	0
5	A	15	0	11	1	0
6	A	16	0	24	1	0
7	A	1	0	0	0	0
8	A	144	0	0	7	0
All	All	6073	0	5897	128	0

The all-atom clashscore is defined as the number of clashes found per 1000 atoms (including hydrogen atoms). The all-atom clashscore for this structure is 11.

All (128) close contacts within the same asymmetric unit are listed below, sorted by their clash magnitude.

Atom-1	Atom-2	Interatomic distance (Å)	Clash overlap (Å)
1:A:705:ILE:HG23	1:A:745:MET:HE1	1.56	0.85
1:A:505:GLU:HB2	8:A:1018:HOH:O	1.84	0.78
1:A:531:VAL:HG13	1:A:571:ILE:HG23	1.68	0.74
1:A:33:ILE:HD12	1:A:275:LEU:HD13	1.72	0.72
4:A:802:CYN:N	5:A:803:DTR:NE1	2.38	0.71
1:A:505:GLU:CB	8:A:1018:HOH:O	2.39	0.71
1:A:170:LYS:HA	1:A:170:LYS:HE2	1.76	0.68
1:A:115:LEU:HD22	1:A:248:PRO:HD3	1.76	0.67
1:A:10:TRP:HB3	1:A:43:LEU:HD11	1.77	0.66
1:A:178:ILE:HD12	1:A:370:PRO:HG3	1.77	0.65
1:A:53:THR:O	1:A:53:THR:OG1	2.13	0.64
1:A:488:SER:O	1:A:493:THR:HG22	1.98	0.64
1:A:504:LEU:HD13	1:A:533:LYS:HD3	1.80	0.64
1:A:654:ARG:HB3	1:A:662:LYS:HG3	1.80	0.62
1:A:122:LEU:HD21	1:A:126:PRO:HD3	1.81	0.62
1:A:326:LYS:NZ	8:A:902:HOH:O	2.27	0.60
1:A:629:THR:HG23	1:A:665:ILE:HD11	1.83	0.60
1:A:438:ARG:HH21	1:A:488:SER:HB3	1.67	0.59
1:A:44:GLU:OE1	1:A:44:GLU:N	2.36	0.59
1:A:433:GLY:O	1:A:437:GLN:HG3	2.03	0.58
1:A:453:TRP:CZ3	1:A:460:PRO:HB3	2.39	0.58
1:A:491:VAL:HG21	1:A:528:THR:HG21	1.86	0.57
1:A:199:ILE:HG21	1:A:206:ALA:HB2	1.85	0.57
1:A:536:VAL:HA	1:A:539:ILE:HD12	1.84	0.57
1:A:257:PRO:HD2	1:A:327:GLY:HA3	1.85	0.57
1:A:12:ASN:ND2	8:A:904:HOH:O	2.30	0.56
1:A:471:PRO:O	1:A:475:VAL:HG22	2.07	0.55
1:A:488:SER:HA	1:A:492:LEU:HD12	1.88	0.55
1:A:195:LEU:O	1:A:199:ILE:HD12	2.07	0.54
1:A:382:TYR:CD2	1:A:387:PRO:HB3	2.43	0.54
1:A:457:GLU:O	1:A:460:PRO:HD3	2.07	0.54
1:A:43:LEU:HD23	1:A:62:TRP:HE3	1.72	0.54
1:A:233:SER:HB3	1:A:297:LYS:HD3	1.88	0.54
1:A:19:GLY:HA3	1:A:293:VAL:HA	1.89	0.53
1:A:280:LEU:O	1:A:285:LEU:HB2	2.08	0.53
1:A:129:TRP:O	1:A:132:ILE:HD12	2.08	0.52
1:A:204:MET:HG2	8:A:925:HOH:O	2.07	0.52

Continued on next page...

Continued from previous page...

Atom-1	Atom-2	Interatomic distance (Å)	Clash overlap (Å)
1:A:159:PRO:HG3	1:A:257:PRO:HA	1.90	0.52
1:A:129:TRP:CD1	1:A:248:PRO:HB2	2.45	0.51
1:A:259:VAL:O	1:A:329:ILE:HD12	2.10	0.51
1:A:658:PRO:HG2	1:A:661:HIS:ND1	2.25	0.51
1:A:89:LEU:HB2	1:A:94:TRP:NE1	2.26	0.51
1:A:639:GLY:O	1:A:641:ARG:HD3	2.10	0.51
1:A:43:LEU:HD23	1:A:62:TRP:CE3	2.46	0.51
1:A:80:THR:O	1:A:277:LYS:NZ	2.45	0.50
1:A:703:TYR:O	1:A:706:THR:HB	2.12	0.49
1:A:642:HIS:CE1	1:A:751:VAL:HG13	2.47	0.49
1:A:318:ALA:O	1:A:322:GLU:HG3	2.11	0.49
1:A:344:ARG:O	1:A:348:ILE:HG13	2.12	0.49
1:A:506:ILE:HG21	1:A:581:TYR:OH	2.13	0.49
1:A:132:ILE:N	1:A:133:PRO:HD2	2.28	0.48
1:A:12:ASN:HB3	1:A:15:LYS:HG2	1.95	0.48
1:A:99:TYR:HB3	1:A:104:ILE:HD13	1.94	0.48
1:A:505:GLU:HB3	8:A:1018:HOH:O	2.11	0.48
1:A:169:PHE:HE2	1:A:336:MET:HE2	1.79	0.48
1:A:435:ARG:HD3	6:A:807:EDO:H21	1.96	0.48
1:A:372:SER:O	1:A:375:SER:HB2	2.14	0.47
1:A:308:GLU:O	1:A:312:VAL:HG12	2.14	0.47
1:A:434:HIS:CE1	1:A:438:ARG:HH11	2.31	0.47
1:A:295:LYS:HB3	8:A:982:HOH:O	2.14	0.47
1:A:545:ALA:O	1:A:549:ILE:HG13	2.15	0.47
1:A:630:VAL:HG12	1:A:631:LEU:HD23	1.97	0.47
1:A:129:TRP:N	1:A:249:THR:O	2.29	0.47
1:A:192:LEU:HD23	1:A:357:VAL:HG13	1.96	0.46
1:A:509:LEU:HB3	1:A:526:LEU:HD22	1.97	0.46
1:A:473:VAL:HG21	1:A:613:VAL:HG11	1.96	0.46
1:A:257:PRO:HD2	1:A:327:GLY:CA	2.44	0.46
1:A:438:ARG:NH2	1:A:488:SER:HB3	2.29	0.46
1:A:139:LEU:HD12	1:A:146:ALA:HA	1.98	0.46
1:A:373:LEU:HD11	1:A:539:ILE:HG22	1.97	0.46
1:A:45:GLU:O	1:A:49:GLN:HG3	2.17	0.45
1:A:588:TYR:CD1	1:A:588:TYR:C	2.93	0.45
1:A:136:ASP:OD2	1:A:140:LYS:NZ	2.47	0.45
1:A:401:MET:SD	1:A:443:VAL:HG21	2.56	0.45
1:A:720:LYS:HA	1:A:720:LYS:HD3	1.72	0.45
1:A:754:LYS:HA	1:A:754:LYS:HD2	1.59	0.45
1:A:89:LEU:HB2	1:A:94:TRP:HE1	1.82	0.45
1:A:130:GLU:OE1	1:A:130:GLU:N	2.48	0.45

Continued on next page...

Continued from previous page...

Atom-1	Atom-2	Interatomic distance (Å)	Clash overlap (Å)
1:A:406:LYS:HB2	1:A:410:LEU:HD12	1.99	0.45
1:A:294:ASN:OD1	1:A:298:PRO:HA	2.16	0.45
1:A:90:TYR:CE2	1:A:305:LYS:HA	2.52	0.44
1:A:116:ILE:HB	1:A:225:THR:HG22	1.99	0.44
1:A:288:GLU:CD	1:A:288:GLU:H	2.25	0.44
1:A:218:ASN:OD1	1:A:235:ILE:HG13	2.18	0.44
1:A:371:LEU:HD22	1:A:546:THR:HG21	1.98	0.44
1:A:425:LEU:HD13	1:A:467:ASN:HA	2.00	0.44
1:A:285:LEU:HA	1:A:285:LEU:HD23	1.64	0.44
1:A:169:PHE:CE2	1:A:336:MET:HE2	2.53	0.44
1:A:219:LYS:HB2	1:A:221:GLU:HG3	1.98	0.44
1:A:626:ALA:O	1:A:632:HIS:HE1	2.00	0.44
1:A:109:ALA:HA	1:A:302:VAL:HA	1.98	0.43
1:A:290:LEU:HB2	1:A:307:TYR:CD2	2.53	0.43
1:A:636:GLU:OE1	1:A:669:HIS:ND1	2.40	0.43
1:A:5:GLY:O	1:A:33:ILE:HG23	2.18	0.43
1:A:244:VAL:HG12	1:A:319:ALA:HB3	1.99	0.43
1:A:290:LEU:HB2	1:A:307:TYR:HD2	1.84	0.43
1:A:423:MET:HB3	1:A:467:ASN:HD22	1.83	0.43
1:A:136:ASP:O	1:A:140:LYS:HG2	2.19	0.42
1:A:583:ASP:HB3	1:A:586:ILE:HB	2.00	0.42
1:A:119:LYS:HG3	1:A:241:ASN:C	2.44	0.42
1:A:168:ALA:O	1:A:181:VAL:HA	2.19	0.42
1:A:485:LEU:HD21	1:A:490:LEU:HB2	2.01	0.42
1:A:701:ARG:NH1	1:A:755:THR:OG1	2.47	0.42
1:A:1:LYS:HA	1:A:1:LYS:HD2	1.69	0.42
1:A:126:PRO:C	1:A:127:LYS:HD2	2.44	0.42
1:A:83:LYS:HD2	1:A:87:ASP:OD2	2.20	0.42
1:A:98:ARG:HG3	1:A:103:LEU:HD23	2.02	0.41
1:A:117:TYR:CE2	1:A:125:PRO:HG3	2.55	0.41
1:A:434:HIS:HE1	1:A:438:ARG:HH11	1.67	0.41
1:A:307:TYR:HD1	1:A:307:TYR:O	2.03	0.41
1:A:331:PRO:HG2	1:A:336:MET:HE3	2.01	0.41
1:A:383:GLY:HA3	1:A:536:VAL:HG22	2.01	0.41
1:A:542:LEU:HD22	1:A:637:PHE:CG	2.55	0.41
1:A:625:ALA:HB1	3:A:801:HEM:HBC2	2.03	0.41
1:A:293:VAL:HG12	1:A:299:LEU:HD21	2.00	0.41
1:A:524:PHE:CE1	3:A:801:HEM:HAB	2.55	0.41
1:A:664:PHE:CZ	1:A:668:ILE:HD11	2.54	0.41
1:A:635:ASP:CG	1:A:701:ARG:HH22	2.28	0.41
1:A:255:SER:O	1:A:257:PRO:HD3	2.21	0.41

Continued on next page...

Continued from previous page...

Atom-1	Atom-2	Interatomic distance (Å)	Clash overlap (Å)
1:A:625:ALA:H	4:A:802:CYN:C	2.33	0.41
1:A:491:VAL:HG11	1:A:528:THR:HG22	2.02	0.41
1:A:198:LEU:HD23	1:A:204:MET:CE	2.51	0.41
1:A:201:ASN:C	1:A:203:HIS:H	2.28	0.41
1:A:68:GLY:HA3	1:A:332:ASN:O	2.21	0.40
1:A:148:MET:HE3	1:A:148:MET:HB3	1.95	0.40
1:A:489:ASP:O	1:A:494:ASN:HB2	2.22	0.40
1:A:551:GLN:O	1:A:553:ASN:N	2.55	0.40
1:A:760:LEU:HD23	1:A:760:LEU:HA	1.87	0.40

There are no symmetry-related clashes.

5.3 Torsion angles [i](#)

5.3.1 Protein backbone [i](#)

In the following table, the Percentiles column shows the percent Ramachandran outliers of the chain as a percentile score with respect to all X-ray entries followed by that with respect to entries of similar resolution.

The Analysed column shows the number of residues for which the backbone conformation was analysed, and the total number of residues.

Mol	Chain	Analysed	Favoured	Allowed	Outliers	Percentiles
1	A	741/782 (95%)	710 (96%)	28 (4%)	3 (0%)	30 49

All (3) Ramachandran outliers are listed below:

Mol	Chain	Res	Type
1	A	552	PRO
1	A	202	LYS
1	A	165	GLY

5.3.2 Protein sidechains [i](#)

In the following table, the Percentiles column shows the percent sidechain outliers of the chain as a percentile score with respect to all X-ray entries followed by that with respect to entries of similar resolution.

The Analysed column shows the number of residues for which the sidechain conformation was analysed, and the total number of residues.

Mol	Chain	Analysed	Rotameric	Outliers	Percentiles	
1	A	619/649 (95%)	592 (96%)	27 (4%)	25	50

All (27) residues with a non-rotameric sidechain are listed below:

Mol	Chain	Res	Type
1	A	0	MET
1	A	1	LYS
1	A	53	THR
1	A	119	LYS
1	A	157	THR
1	A	181	VAL
1	A	193	THR
1	A	239	LYS
1	A	258	PHE
1	A	297	LYS
1	A	305	LYS
1	A	372	SER
1	A	392	GLU
1	A	475	VAL
1	A	496	THR
1	A	505	GLU
1	A	506	ILE
1	A	512	ILE
1	A	520	SER
1	A	598	TRP
1	A	621	SER
1	A	628	SER
1	A	662	LYS
1	A	706	THR
1	A	714	THR
1	A	718	LYS
1	A	739	THR

Sometimes sidechains can be flipped to improve hydrogen bonding and reduce clashes. All (6) such sidechains are listed below:

Mol	Chain	Res	Type
1	A	241	ASN
1	A	434	HIS
1	A	459	GLN
1	A	544	GLN
1	A	683	GLN
1	A	761	HIS

5.3.3 RNA ⓘ

There are no RNA molecules in this entry.

5.4 Non-standard residues in protein, DNA, RNA chains ⓘ

There are no non-standard protein/DNA/RNA residues in this entry.

5.5 Carbohydrates ⓘ

2 monosaccharides are modelled in this entry.

In the following table, the Counts columns list the number of bonds (or angles) for which Mogul statistics could be retrieved, the number of bonds (or angles) that are observed in the model and the number of bonds (or angles) that are defined in the Chemical Component Dictionary. The Link column lists molecule types, if any, to which the group is linked. The Z score for a bond length (or angle) is the number of standard deviations the observed value is removed from the expected value. A bond length (or angle) with $|Z| > 2$ is considered an outlier worth inspection. RMSZ is the root-mean-square of all Z scores of the bond lengths (or angles).

Mol	Type	Chain	Res	Link	Bond lengths			Bond angles		
					Counts	RMSZ	$\# Z > 2$	Counts	RMSZ	$\# Z > 2$
2	GLC	B	1	2	12,12,12	0.21	0	17,17,17	0.51	0
2	GLC	B	2	2	11,11,12	0.67	0	15,15,17	0.97	1 (6%)

In the following table, the Chirals column lists the number of chiral outliers, the number of chiral centers analysed, the number of these observed in the model and the number defined in the Chemical Component Dictionary. Similar counts are reported in the Torsion and Rings columns. '-' means no outliers of that kind were identified.

Mol	Type	Chain	Res	Link	Chirals	Torsions	Rings
2	GLC	B	1	2	-	2/2/22/22	0/1/1/1
2	GLC	B	2	2	-	0/2/19/22	0/1/1/1

There are no bond length outliers.

All (1) bond angle outliers are listed below:

Mol	Chain	Res	Type	Atoms	Z	Observed(°)	Ideal(°)
2	B	2	GLC	C1-C2-C3	-2.19	106.46	109.64

There are no chirality outliers.

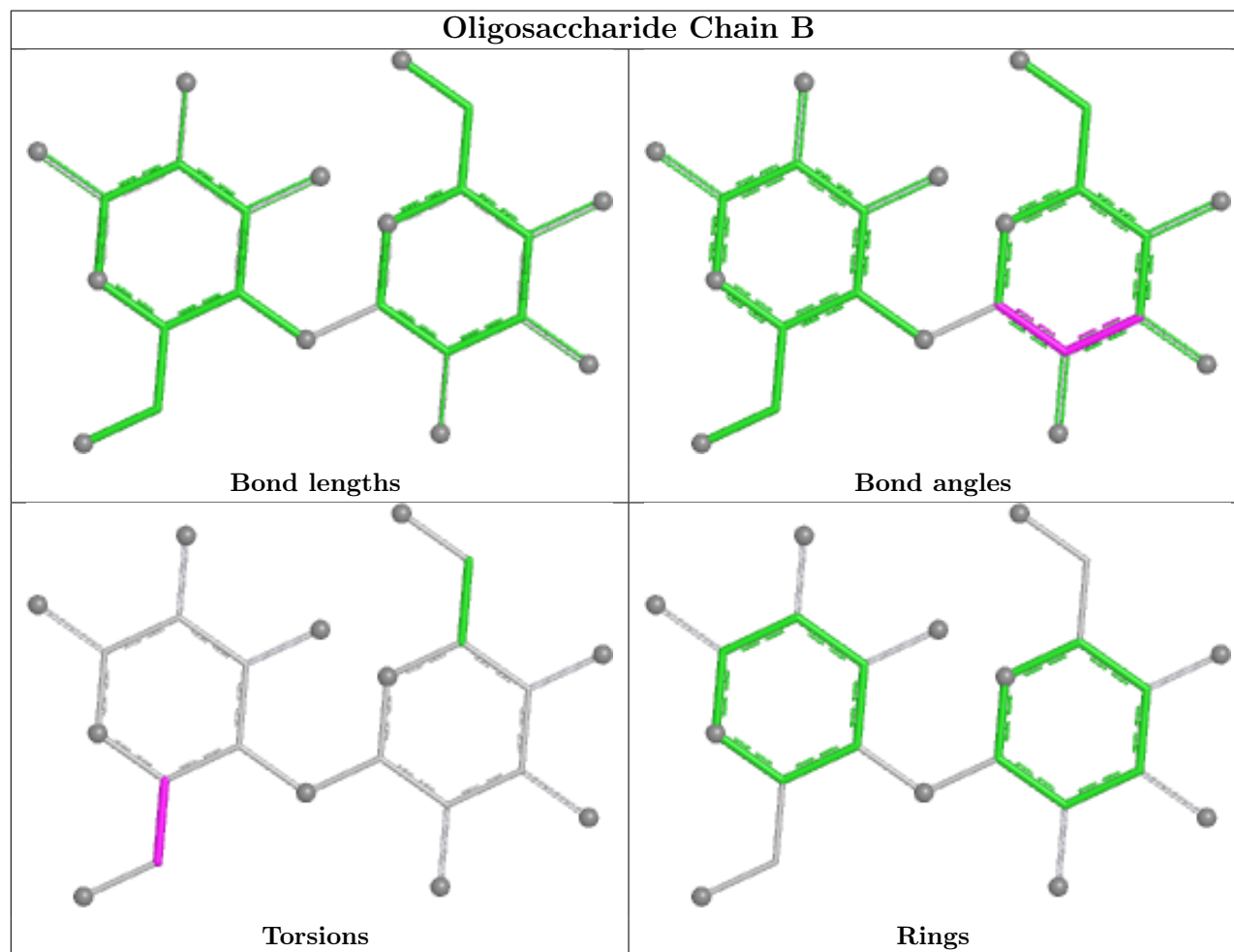
All (2) torsion outliers are listed below:

Mol	Chain	Res	Type	Atoms
2	B	1	GLC	O5-C5-C6-O6
2	B	1	GLC	C4-C5-C6-O6

There are no ring outliers.

No monomer is involved in short contacts.

The following is a two-dimensional graphical depiction of Mogul quality analysis of bond lengths, bond angles, torsion angles, and ring geometry for oligosaccharide.



5.6 Ligand geometry [i](#)

Of 8 ligands modelled in this entry, 1 is monoatomic - leaving 7 for Mogul analysis.

In the following table, the Counts columns list the number of bonds (or angles) for which Mogul statistics could be retrieved, the number of bonds (or angles) that are observed in the model and the number of bonds (or angles) that are defined in the Chemical Component Dictionary. The Link column lists molecule types, if any, to which the group is linked. The Z score for a bond length (or angle) is the number of standard deviations the observed value is removed from the

expected value. A bond length (or angle) with $|Z| > 2$ is considered an outlier worth inspection. RMSZ is the root-mean-square of all Z scores of the bond lengths (or angles).

Mol	Type	Chain	Res	Link	Bond lengths			Bond angles		
					Counts	RMSZ	$\# Z > 2$	Counts	RMSZ	$\# Z > 2$
5	DTR	A	803	-	15,16,16	0.65	1 (6%)	18,22,22	0.51	0
4	CYN	A	802	-	1,1,1	1.28	0	-		
6	EDO	A	806	-	3,3,3	0.06	0	2,2,2	0.10	0
6	EDO	A	804	-	3,3,3	0.60	0	2,2,2	0.21	0
6	EDO	A	807	-	3,3,3	0.54	0	2,2,2	0.22	0
3	HEM	A	801	1	50,50,50	1.64	9 (18%)	67,82,82	3.28	14 (20%)
6	EDO	A	805	-	3,3,3	0.57	0	2,2,2	0.18	0

In the following table, the Chirals column lists the number of chiral outliers, the number of chiral centers analysed, the number of these observed in the model and the number defined in the Chemical Component Dictionary. Similar counts are reported in the Torsion and Rings columns. '-' means no outliers of that kind were identified.

Mol	Type	Chain	Res	Link	Chirals	Torsions	Rings
5	DTR	A	803	-	-	0/8/8/8	0/2/2/2
6	EDO	A	806	-	-	1/1/1/1	-
6	EDO	A	804	-	-	1/1/1/1	-
6	EDO	A	807	-	-	0/1/1/1	-
3	HEM	A	801	1	-	9/14/54/54	-
6	EDO	A	805	-	-	0/1/1/1	-

All (10) bond length outliers are listed below:

Mol	Chain	Res	Type	Atoms	Z	Observed(Å)	Ideal(Å)
3	A	801	HEM	FE-NB	4.82	2.09	1.94
3	A	801	HEM	FE-NC	4.02	2.08	1.95
3	A	801	HEM	C1B-NB	-3.68	1.33	1.40
3	A	801	HEM	C4D-ND	-3.38	1.34	1.40
3	A	801	HEM	FE-ND	-2.75	1.86	1.94
3	A	801	HEM	C1C-C2C	-2.74	1.39	1.45
3	A	801	HEM	C1D-ND	-2.59	1.33	1.38
3	A	801	HEM	C3C-C4C	-2.41	1.41	1.46
3	A	801	HEM	C4B-NB	-2.29	1.34	1.38
5	A	803	DTR	OXT-C	-2.11	1.23	1.30

All (14) bond angle outliers are listed below:

Mol	Chain	Res	Type	Atoms	Z	Observed(°)	Ideal(°)
3	A	801	HEM	O2A-CGA-O1A	-16.94	79.77	123.33

Continued on next page...

Continued from previous page...

Mol	Chain	Res	Type	Atoms	Z	Observed(°)	Ideal(°)
3	A	801	HEM	O1A-CGA-CBA	11.40	159.24	123.09
3	A	801	HEM	O2A-CGA-CBA	-10.92	79.49	114.00
3	A	801	HEM	CHC-C4B-NB	5.31	130.14	124.42
3	A	801	HEM	CHD-C1D-ND	4.75	129.54	124.42
3	A	801	HEM	CHB-C1B-NB	3.79	129.05	124.37
3	A	801	HEM	CHA-C4D-ND	3.30	128.46	124.37
3	A	801	HEM	C1B-NB-C4B	3.17	108.96	105.21
3	A	801	HEM	CHD-C1D-C2D	-3.11	120.12	125.03
3	A	801	HEM	CHD-C4C-NC	2.76	127.46	124.45
3	A	801	HEM	C3B-C4B-NB	-2.56	107.63	109.47
3	A	801	HEM	CHB-C1B-C2B	-2.23	120.61	126.95
3	A	801	HEM	C1A-CHA-C4D	-2.08	121.35	126.25
3	A	801	HEM	CHA-C4D-C3D	-2.02	121.50	125.23

There are no chirality outliers.

All (11) torsion outliers are listed below:

Mol	Chain	Res	Type	Atoms
3	A	801	HEM	C2B-C3B-CAB-CBB
3	A	801	HEM	C4B-C3B-CAB-CBB
3	A	801	HEM	C2C-C3C-CAC-CBC
3	A	801	HEM	C4C-C3C-CAC-CBC
3	A	801	HEM	C2A-CAA-CBA-CGA
6	A	804	EDO	O1-C1-C2-O2
3	A	801	HEM	CAD-CBD-CGD-O2D
3	A	801	HEM	C3D-CAD-CBD-CGD
3	A	801	HEM	CAD-CBD-CGD-O1D
6	A	806	EDO	O1-C1-C2-O2
3	A	801	HEM	CAA-CBA-CGA-O1A

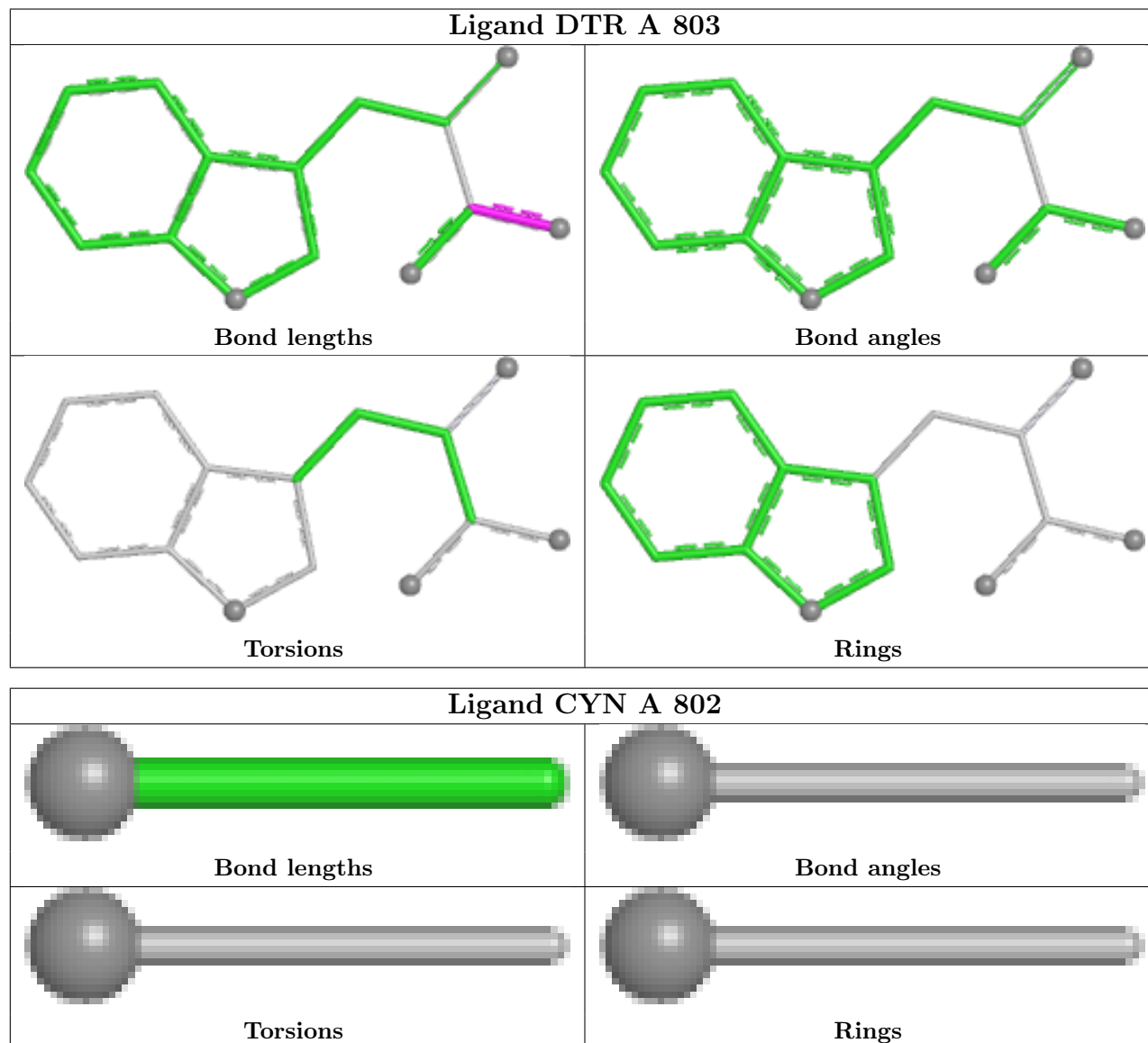
There are no ring outliers.

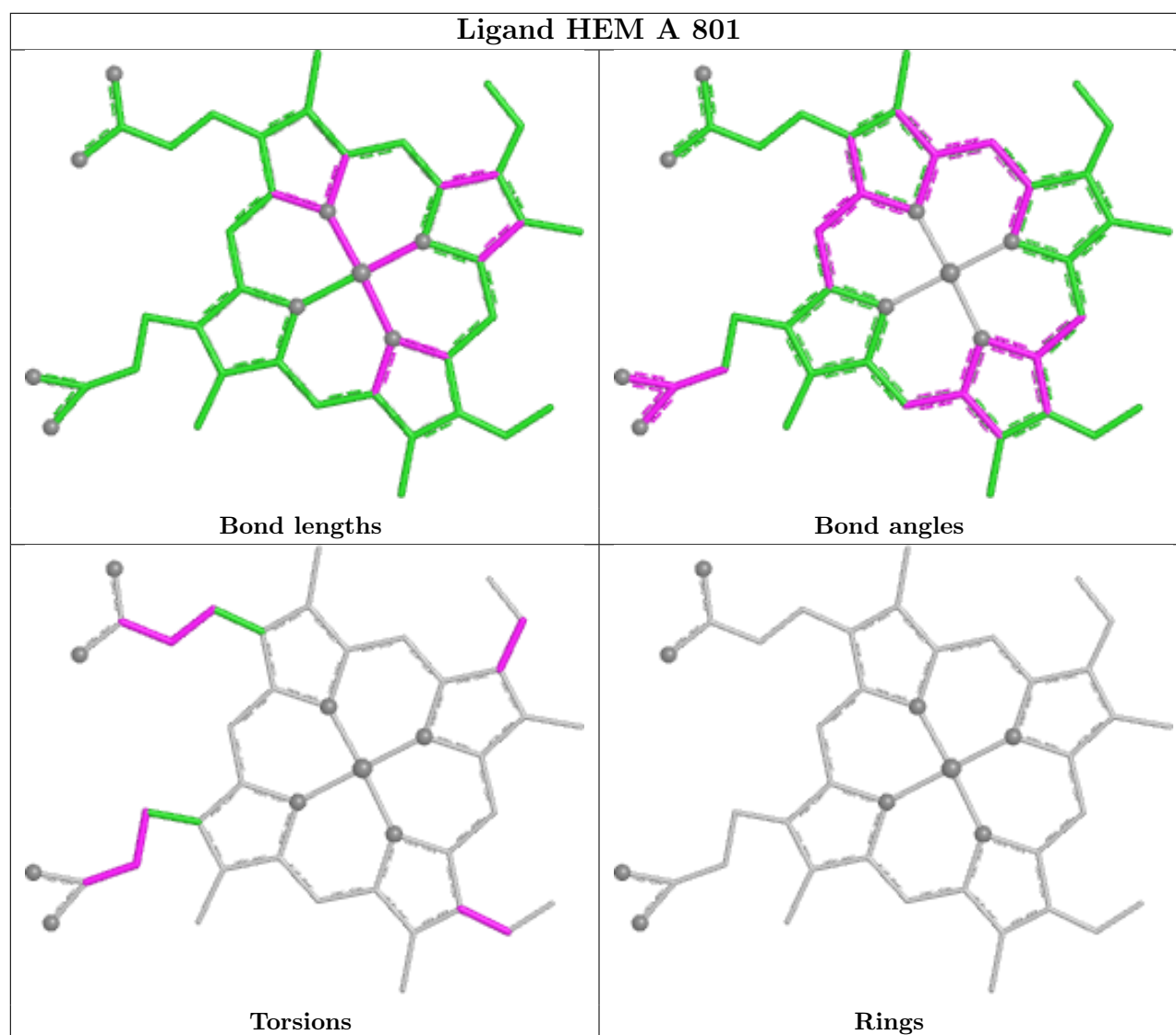
4 monomers are involved in 5 short contacts:

Mol	Chain	Res	Type	Clashes	Symm-Clashes
5	A	803	DTR	1	0
4	A	802	CYN	2	0
6	A	807	EDO	1	0
3	A	801	HEM	2	0

The following is a two-dimensional graphical depiction of Mogul quality analysis of bond lengths, bond angles, torsion angles, and ring geometry for all instances of the Ligand of Interest. In

addition, ligands with molecular weight > 250 and outliers as shown on the validation Tables will also be included. For torsion angles, if less than 5% of the Mogul distribution of torsion angles is within 10 degrees of the torsion angle in question, then that torsion angle is considered an outlier. Any bond that is central to one or more torsion angles identified as an outlier by Mogul will be highlighted in the graph. For rings, the root-mean-square deviation (RMSD) between the ring in question and similar rings identified by Mogul is calculated over all ring torsion angles. If the average RMSD is greater than 60 degrees and the minimal RMSD between the ring in question and any Mogul-identified rings is also greater than 60 degrees, then that ring is considered an outlier. The outliers are highlighted in purple. The color gray indicates Mogul did not find sufficient equivalents in the CSD to analyse the geometry.





5.7 Other polymers [i](#)

There are no such residues in this entry.

5.8 Polymer linkage issues [i](#)

There are no chain breaks in this entry.

6 Fit of model and data [i](#)

6.1 Protein, DNA and RNA chains [i](#)

In the following table, the column labelled ‘#RSRZ > 2’ contains the number (and percentage) of RSRZ outliers, followed by percent RSRZ outliers for the chain as percentile scores relative to all X-ray entries and entries of similar resolution. The OWAB column contains the minimum, median, 95th percentile and maximum values of the occupancy-weighted average B-factor per residue. The column labelled ‘Q < 0.9’ lists the number of (and percentage) of residues with an average occupancy less than 0.9.

Mol	Chain	Analysed	<RSRZ>	#RSRZ>2	OWAB(Å ²)	Q<0.9
1	A	745/782 (95%)	0.23	21 (2%) 55 50	58, 83, 115, 140	0

All (21) RSRZ outliers are listed below:

Mol	Chain	Res	Type	RSRZ
1	A	719	ALA	3.7
1	A	739	THR	3.4
1	A	0	MET	3.2
1	A	2	ILE	3.2
1	A	720	LYS	3.0
1	A	741	GLY	2.8
1	A	588	TYR	2.8
1	A	544	GLN	2.7
1	A	246	VAL	2.7
1	A	125	PRO	2.6
1	A	762	PRO	2.6
1	A	596	SER	2.5
1	A	1	LYS	2.4
1	A	641	ARG	2.4
1	A	134	ALA	2.3
1	A	552	PRO	2.2
1	A	54	GLY	2.2
1	A	420	VAL	2.1
1	A	740	GLY	2.1
1	A	176	TYR	2.1
1	A	611	GLU	2.0

6.2 Non-standard residues in protein, DNA, RNA chains [i](#)

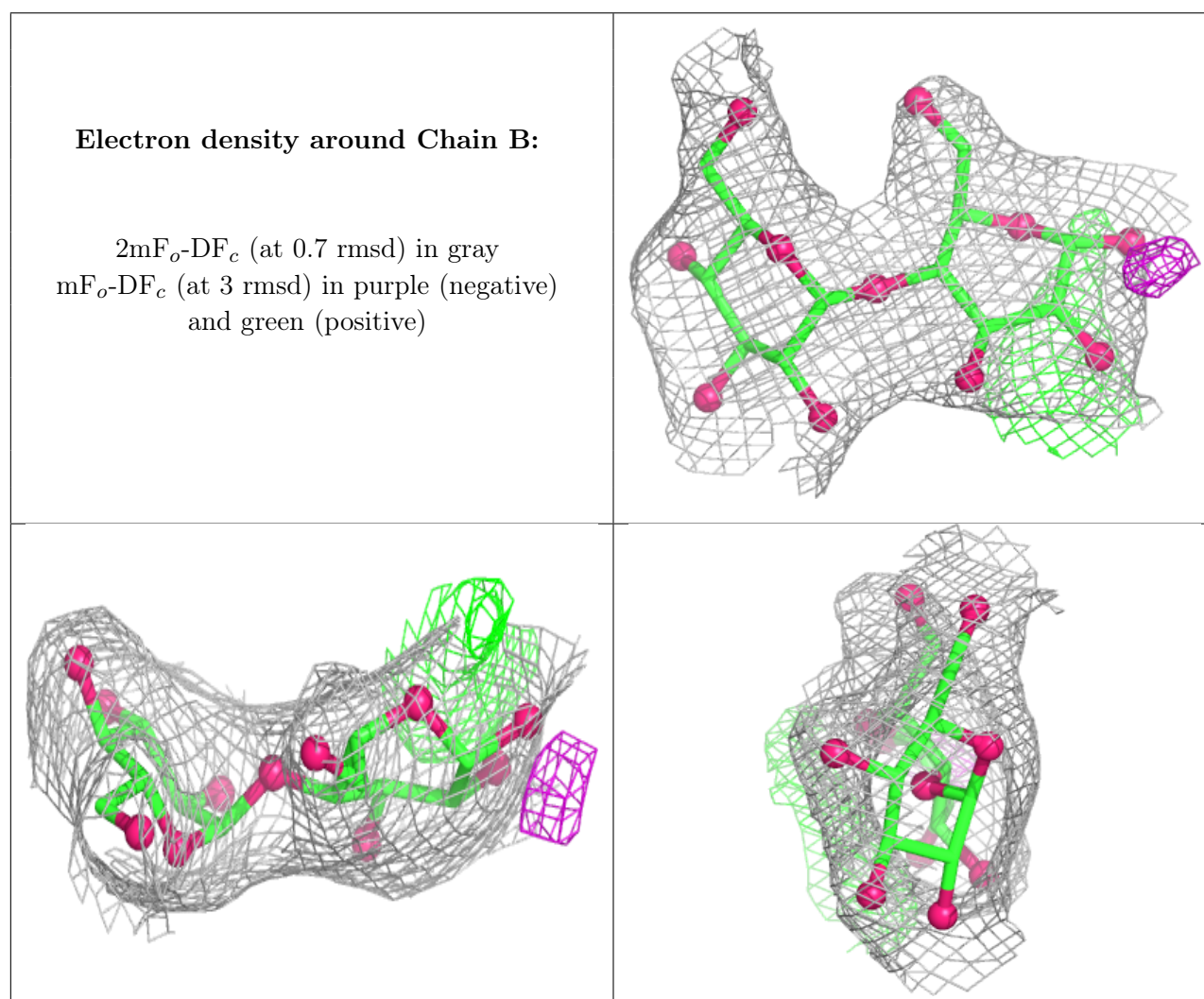
There are no non-standard protein/DNA/RNA residues in this entry.

6.3 Carbohydrates [i](#)

In the following table, the Atoms column lists the number of modelled atoms in the group and the number defined in the chemical component dictionary. The B-factors column lists the minimum, median, 95th percentile and maximum values of B factors of atoms in the group. The column labelled 'Q<0.9' lists the number of atoms with occupancy less than 0.9.

Mol	Type	Chain	Res	Atoms	RSCC	RSR	B-factors(\AA^2)	Q<0.9
2	GLC	B	1	12/12	0.87	0.13	81,88,93,93	0
2	GLC	B	2	11/12	0.96	0.07	74,82,86,88	0

The following is a graphical depiction of the model fit to experimental electron density for oligosaccharide. Each fit is shown from different orientation to approximate a three-dimensional view.



6.4 Ligands [i](#)

In the following table, the Atoms column lists the number of modelled atoms in the group and the number defined in the chemical component dictionary. The B-factors column lists the minimum,

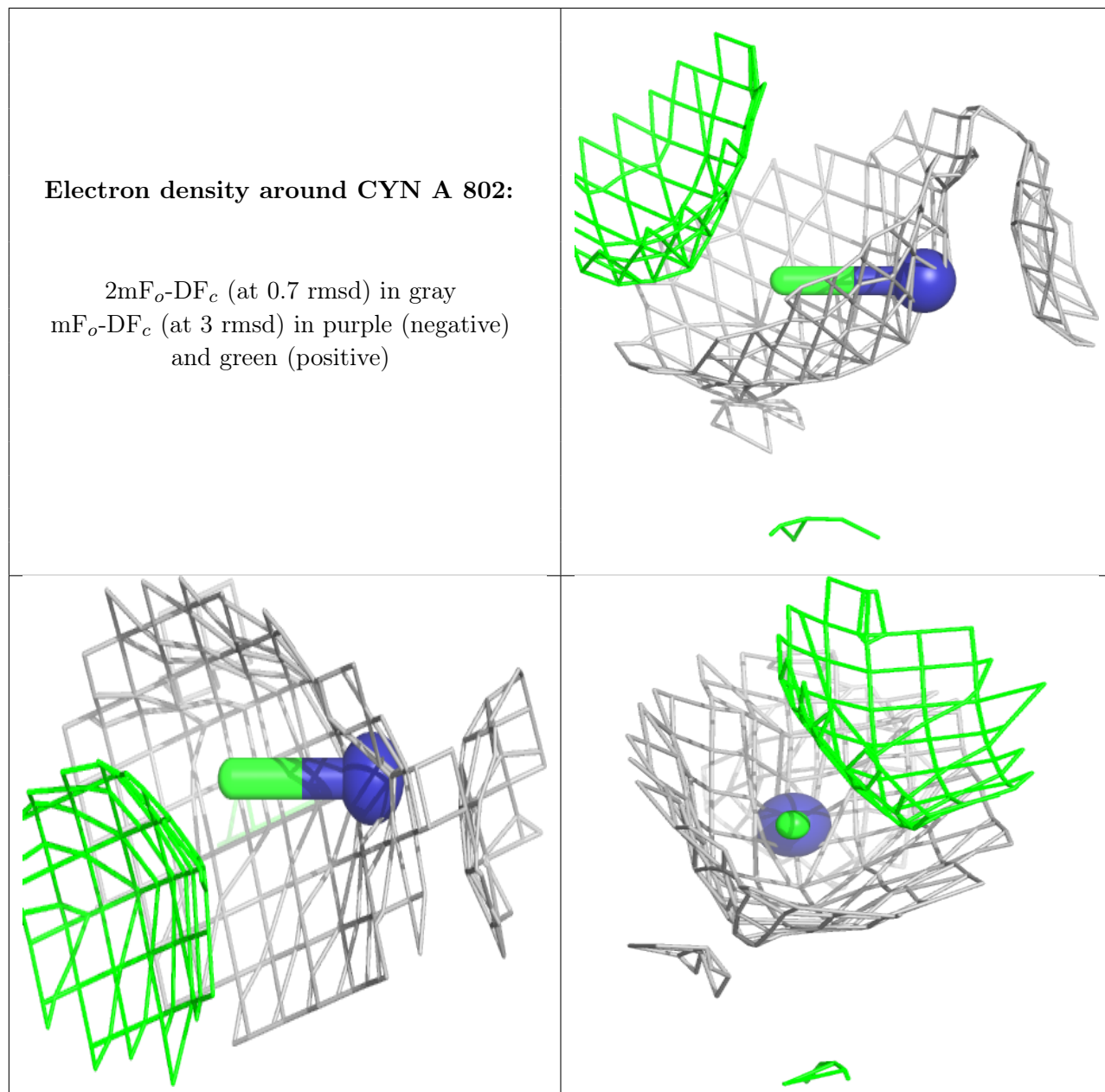
median, 95th percentile and maximum values of B factors of atoms in the group. The column labelled 'Q< 0.9' lists the number of atoms with occupancy less than 0.9.

Mol	Type	Chain	Res	Atoms	RSCC	RSR	B-factors(Å ²)	Q<0.9
6	EDO	A	806	4/4	0.60	0.23	114,116,119,121	0
6	EDO	A	807	4/4	0.73	0.27	92,92,96,103	0
6	EDO	A	805	4/4	0.77	0.29	84,85,88,96	0
6	EDO	A	804	4/4	0.90	0.24	92,93,94,95	0
4	CYN	A	802	2/2	0.90	0.16	73,73,73,80	0
5	DTR	A	803	15/15	0.91	0.15	80,87,93,105	0
7	NA	A	808	1/1	0.92	0.10	82,82,82,82	0
3	HEM	A	801	43/43	0.97	0.11	65,72,86,91	0

The following is a graphical depiction of the model fit to experimental electron density of all instances of the Ligand of Interest. In addition, ligands with molecular weight > 250 and outliers as shown on the geometry validation Tables will also be included. Each fit is shown from different orientation to approximate a three-dimensional view.

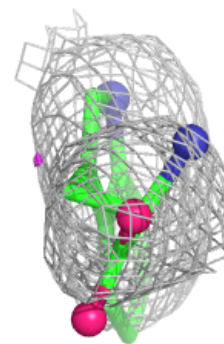
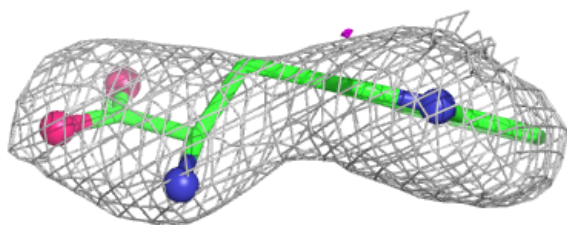
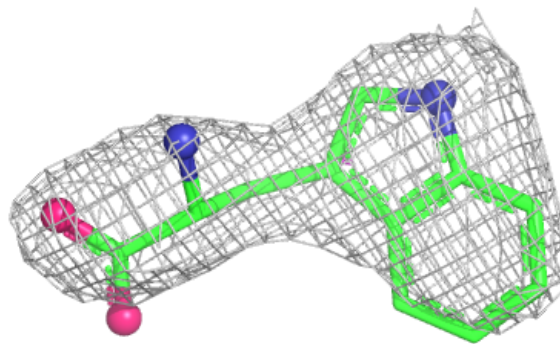
Electron density around CYN A 802:

$2mF_o-DF_c$ (at 0.7 rmsd) in gray
 mF_o-DF_c (at 3 rmsd) in purple (negative)
and green (positive)



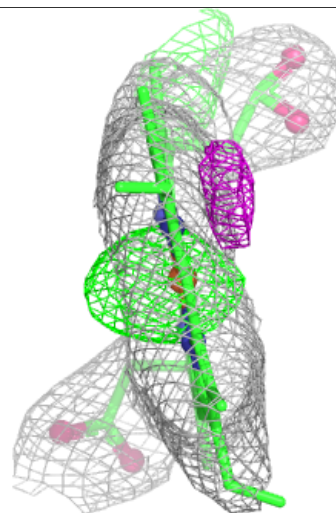
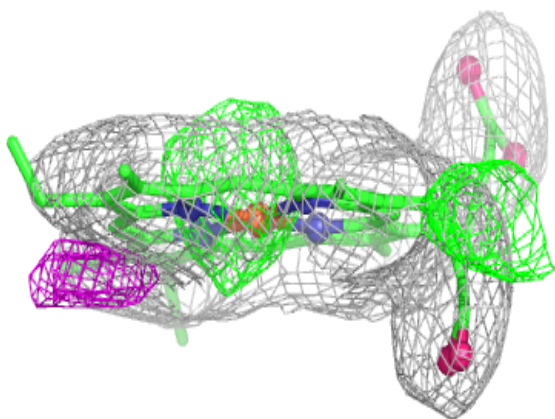
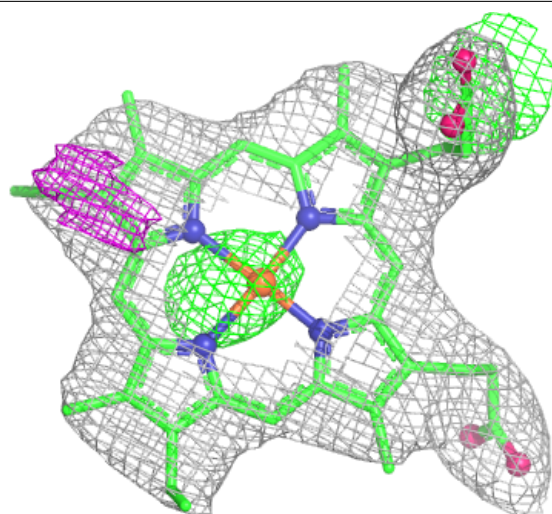
Electron density around DTR A 803:

$2mF_o-DF_c$ (at 0.7 rmsd) in gray
 mF_o-DF_c (at 3 rmsd) in purple (negative)
and green (positive)



Electron density around HEM A 801:

$2mF_o-DF_c$ (at 0.7 rmsd) in gray
 mF_o-DF_c (at 3 rmsd) in purple (negative)
and green (positive)



6.5 Other polymers [i](#)

There are no such residues in this entry.