



Full wwPDB EM Validation Report ⓘ

Apr 6, 2026 – 12:58 AM UTC

PDB ID : 9UTG / pdb_00009utg
EMDB ID : EMD-64491
Title : Glycogen phosphorylase from Segatella copri decamer in complex with AMP
Authors : Shobu, K.; Fukuda, Y.; Inoue, T.
Deposited on : 2025-05-03
Resolution : 3.58 Å(reported)

This is a Full wwPDB EM Validation Report for a publicly released PDB entry.

We welcome your comments at validation@mail.wwpdb.org

A user guide is available at

<https://www.wwpdb.org/validation/2017/EMValidationReportHelp>

with specific help available everywhere you see the ⓘ symbol.

The types of validation reports are described at

<http://www.wwpdb.org/validation/2017/FAQs#types>.

The following versions of software and data (see [references ⓘ](#)) were used in the production of this report:

EMDB validation analysis : 0.0.1.dev132
Mogul : 2022.3.0, CSD as543be (2022)
MolProbity : 4-5-2 with Phenix2.0
Buster-report : wwPDB partial adaption of 1.1.7 (2018)
Percentile statistics : 20250101.v01 (using entries in the PDB archive January 1st 2025)
EM percentile statistics : 202505.v01 (Using data in the EMDB archive up until May 2025)
MapQ : 1.9.13
Ideal geometry (proteins) : Engh & Huber (2001)
Ideal geometry (DNA, RNA) : Parkinson et al. (1996)
Validation Pipeline (wwPDB-VP) : 2.49

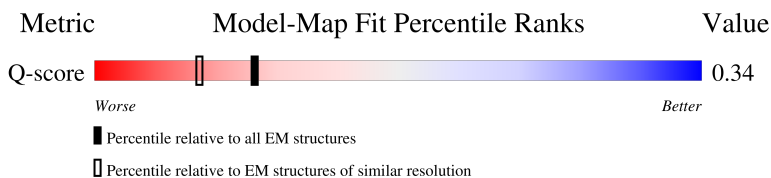
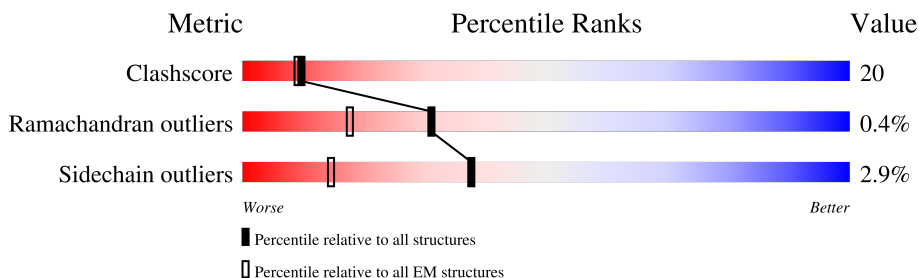
1 Overall quality at a glance

The following experimental techniques were used to determine the structure:

ELECTRON MICROSCOPY


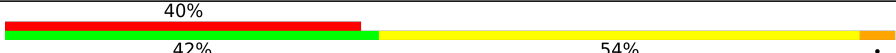
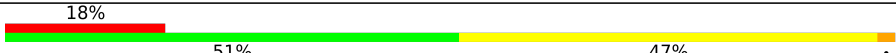
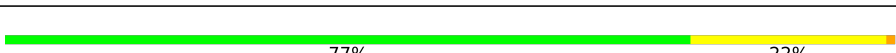
The reported resolution of this entry is 3.58 Å.

Percentile scores (ranging between 0-100) for global validation metrics of the entry are shown in the following graphic. The table shows the number of entries on which the scores are based.



Metric	Whole archive (#Entries)	EM structures (#Entries)	Similar EM resolution (#Entries, resolution range(Å))
Clashscore	229148	23984	-
Ramachandran outliers	224038	23583	-
Sidechain outliers	223484	23102	-
Q-score	-	25397	12629 (3.08 - 4.08)

The table below summarises the geometric issues observed across the polymeric chains and their fit to the map. The red, orange, yellow and green segments of the bar indicate the fraction of residues that contain outliers for ≥ 3 , 2, 1 and 0 types of geometric quality criteria respectively. A grey segment represents the fraction of residues that are not modelled. The numeric value for each fraction is indicated below the corresponding segment, with a dot representing fractions $\leq 5\%$. The upper red bar (where present) indicates the fraction of residues that have poor fit to the EM map (all-atom inclusion $< 40\%$). The numeric value is given above the bar.

Mol	Chain	Length	Quality of chain
1	A	852	
1	B	852	
1	C	852	
1	D	852	

Continued on next page...

Continued from previous page...

Mol	Chain	Length	Quality of chain
1	E	852	<div><div></div><div>75%</div><div>24%</div></div>

2 Entry composition

There are 2 unique types of molecules in this entry. The entry contains 34954 atoms, of which 0 are hydrogens and 0 are deuteriums.

In the tables below, the AltConf column contains the number of residues with at least one atom in alternate conformation and the Trace column contains the number of residues modelled with at most 2 atoms.

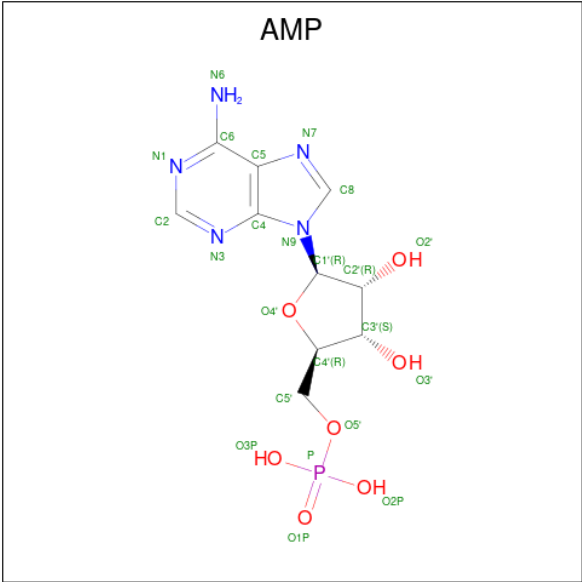
- Molecule 1 is a protein called Alpha-glucan family phosphorylase.

Mol	Chain	Residues	Atoms						AltConf	Trace
1	A	852	Total	C	N	O	P	S	0	0
			6957	4453	1169	1295	1	39		
1	B	852	Total	C	N	O	P	S	0	0
			6957	4453	1169	1295	1	39		
1	C	852	Total	C	N	O	S		0	0
			6942	4445	1168	1290	39			
1	D	852	Total	C	N	O	P	S	0	0
			6957	4453	1169	1295	1	39		
1	E	852	Total	C	N	O	P	S	0	0
			6957	4453	1169	1295	1	39		

There are 5 discrepancies between the modelled and reference sequences:

Chain	Residue	Modelled	Actual	Comment	Reference
A	239	TYR	HIS	conflict	UNP A0AA93BMC9
B	239	TYR	HIS	conflict	UNP A0AA93BMC9
C	239	TYR	HIS	conflict	UNP A0AA93BMC9
D	239	TYR	HIS	conflict	UNP A0AA93BMC9
E	239	TYR	HIS	conflict	UNP A0AA93BMC9

- Molecule 2 is ADENOSINE MONOPHOSPHATE (CCD ID: AMP) (formula: C₁₀H₁₄N₅O₇P) (labeled as "Ligand of Interest" by depositor).



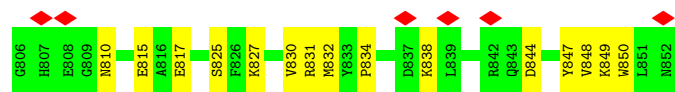
Mol	Chain	Residues	Atoms					AltConf
2	A	1	Total	C	N	O	P	0
			23	10	5	7	1	
2	A	1	Total	C	N	O	P	0
			23	10	5	7	1	
2	B	1	Total	C	N	O	P	0
			23	10	5	7	1	
2	B	1	Total	C	N	O	P	0
			23	10	5	7	1	
2	D	1	Total	C	N	O	P	0
			23	10	5	7	1	
2	D	1	Total	C	N	O	P	0
			23	10	5	7	1	
2	E	1	Total	C	N	O	P	0
			23	10	5	7	1	
2	E	1	Total	C	N	O	P	0
			23	10	5	7	1	

3 Residue-property plots

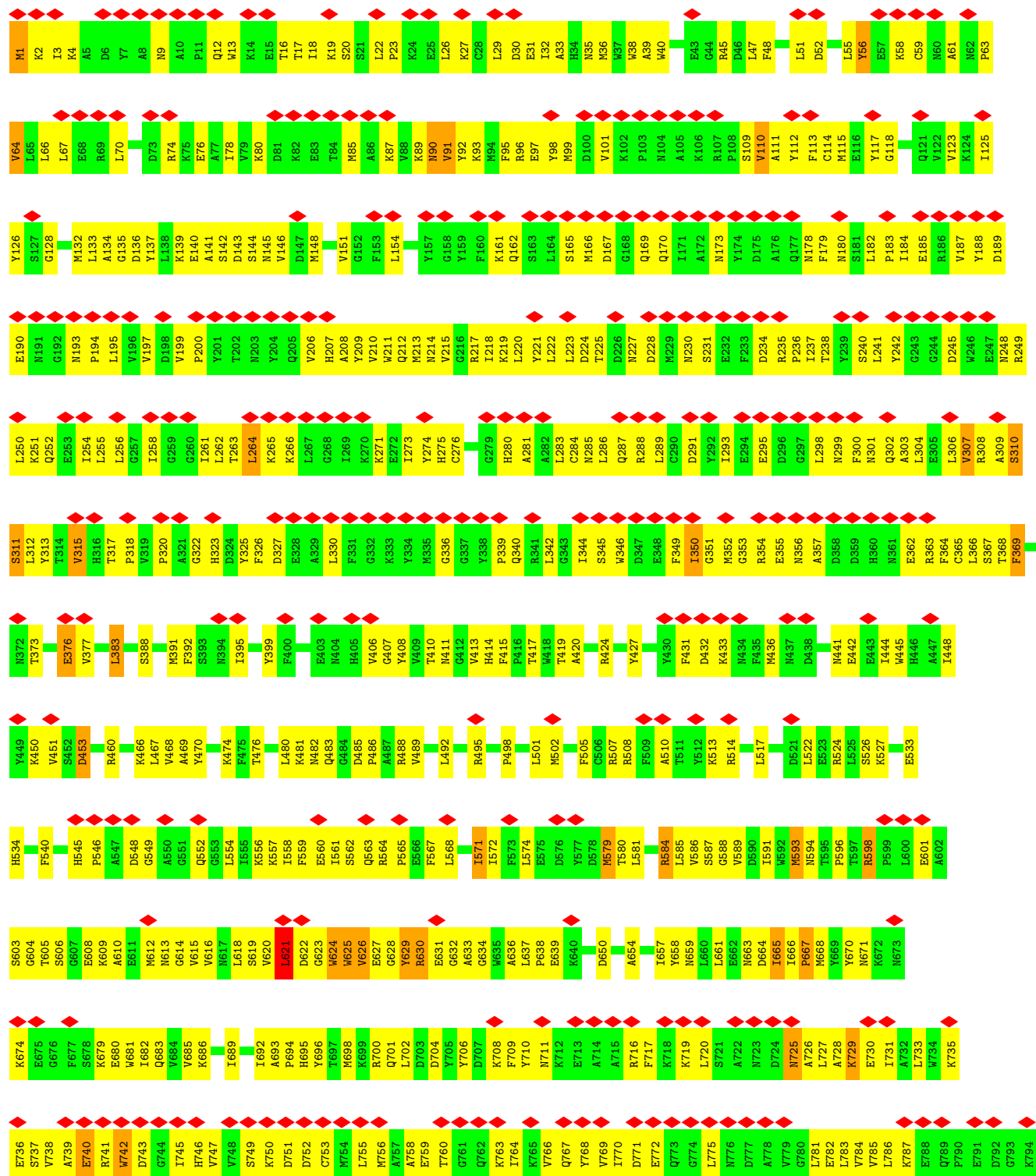
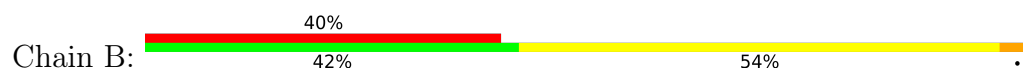
These plots are drawn for all protein, RNA, DNA and oligosaccharide chains in the entry. The first graphic for a chain summarises the proportions of the various outlier classes displayed in the second graphic. The second graphic shows the sequence view annotated by issues in geometry and atom inclusion in map density. Residues are color-coded according to the number of geometric quality criteria for which they contain at least one outlier: green = 0, yellow = 1, orange = 2 and red = 3 or more. A red diamond above a residue indicates a poor fit to the EM map for this residue (all-atom inclusion < 40%). Stretches of 2 or more consecutive residues without any outlier are shown as a green connector. Residues present in the sample, but not in the model, are shown in grey.

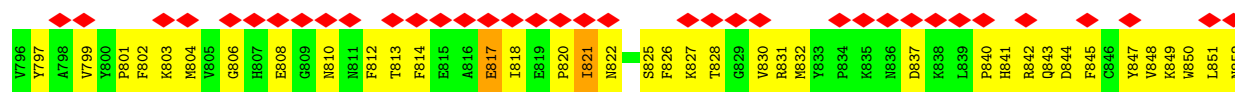
• Molecule 1: Alpha-glucan family phosphorylase



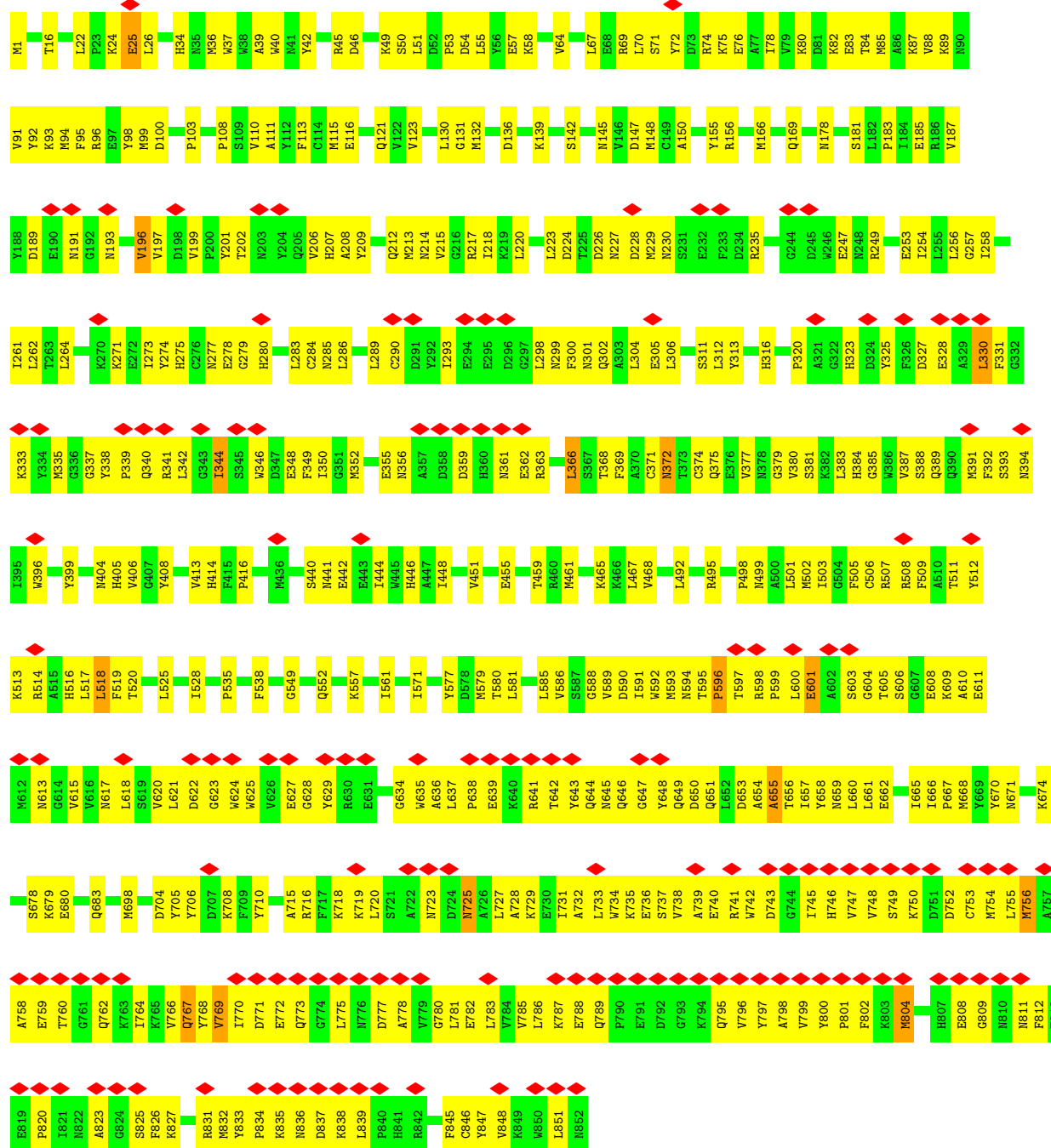


• Molecule 1: Alpha-glucan family phosphorylase

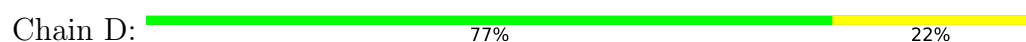


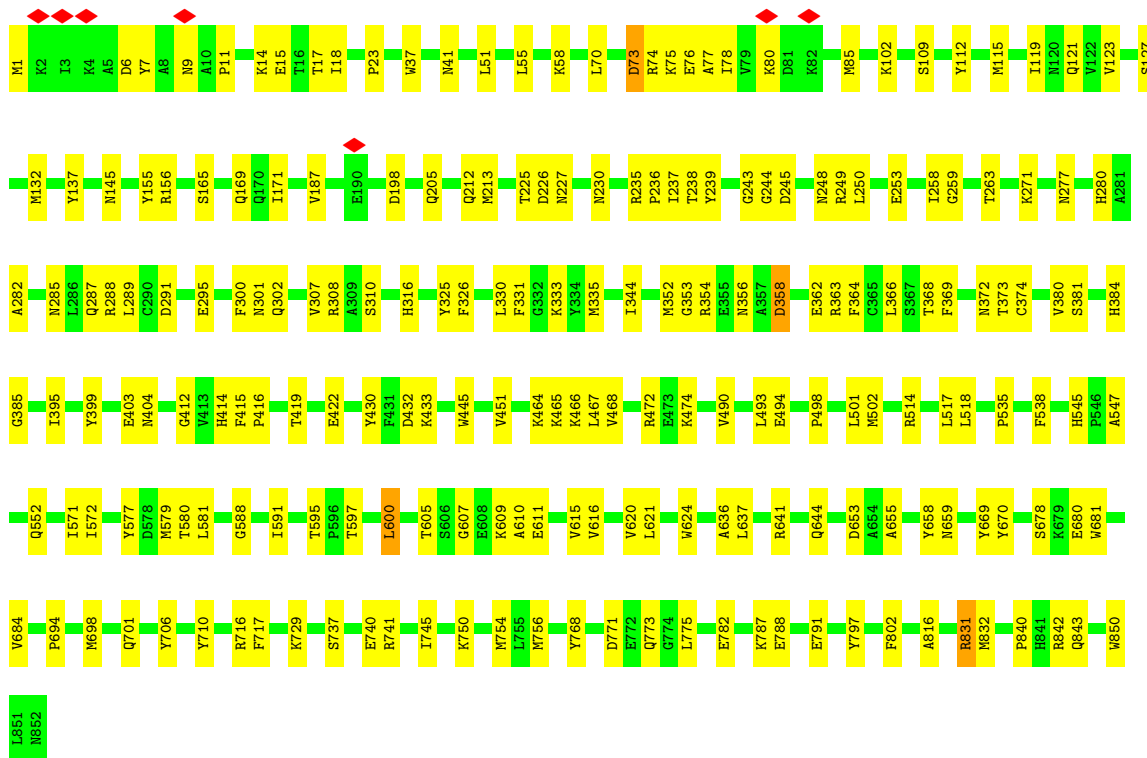
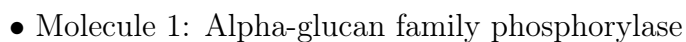


• Molecule 1: Alpha-glucan family phosphorylase



• Molecule 1: Alpha-glucan family phosphorylase





4 Experimental information

Property	Value	Source
EM reconstruction method	SINGLE PARTICLE	Depositor
Imposed symmetry	POINT, C2	Depositor
Number of particles used	30003	Depositor
Resolution determination method	FSC 0.143 CUT-OFF	Depositor
CTF correction method	NONE	Depositor
Microscope	JEOL CRYO ARM 200	Depositor
Voltage (kV)	200	Depositor
Electron dose ($e^-/\text{\AA}^2$)	40.0	Depositor
Minimum defocus (nm)	700	Depositor
Maximum defocus (nm)	2200	Depositor
Magnification	Not provided	
Image detector	GATAN K3 (6k x 4k)	Depositor
Maximum map value	0.593	Depositor
Minimum map value	-0.271	Depositor
Average map value	0.008	Depositor
Map value standard deviation	0.043	Depositor
Recommended contour level	0.117	Depositor
Map size (\AA)	249.0, 249.0, 249.0	wwPDB
Map dimensions	300, 300, 300	wwPDB
Map angles ($^\circ$)	90.0, 90.0, 90.0	wwPDB
Pixel spacing (\AA)	0.83, 0.83, 0.83	Depositor

5 Model quality

5.1 Standard geometry

Bond lengths and bond angles in the following residue types are not validated in this section: LLP, AMP

The Z score for a bond length (or angle) is the number of standard deviations the observed value is removed from the expected value. A bond length (or angle) with $|Z| > 5$ is considered an outlier worth inspection. RMSZ is the root-mean-square of all Z scores of the bond lengths (or angles).

Mol	Chain	Bond lengths		Bond angles	
		RMSZ	# Z >5	RMSZ	# Z >5
1	A	0.32	0/7110	0.57	0/9621
1	B	0.47	0/7110	0.78	2/9621 (0.0%)
1	C	0.30	0/7110	0.63	2/9621 (0.0%)
1	D	0.23	0/7110	0.41	0/9621
1	E	0.18	0/7110	0.34	0/9621
All	All	0.32	0/35550	0.57	4/48105 (0.0%)

Chiral center outliers are detected by calculating the chiral volume of a chiral center and verifying if the center is modelled as a planar moiety or with the opposite hand. A planarity outlier is detected by checking planarity of atoms in a peptide group, atoms in a mainchain group or atoms of a sidechain that are expected to be planar.

Mol	Chain	#Chirality outliers	#Planarity outliers
1	B	0	1

There are no bond length outliers.

All (4) bond angle outliers are listed below:

Mol	Chain	Res	Type	Atoms	Z	Observed(°)	Ideal(°)
1	B	624	TRP	N-CA-C	-6.77	103.08	111.75
1	C	756	MET	CA-CB-CG	5.92	125.94	114.10
1	C	655	ALA	N-CA-C	-5.66	105.11	111.28
1	B	743	ASP	N-CA-C	-5.43	105.53	111.82

There are no chirality outliers.

All (1) planarity outliers are listed below:

Mol	Chain	Res	Type	Group
1	B	598	ARG	Peptide

5.2 Too-close contacts ⓘ

In the following table, the Non-H and H(model) columns list the number of non-hydrogen atoms and hydrogen atoms in the chain respectively. The H(added) column lists the number of hydrogen atoms added and optimized by MolProbity. The Clashes column lists the number of clashes within the asymmetric unit, whereas Symm-Clashes lists symmetry-related clashes.

Mol	Chain	Non-H	H(model)	H(added)	Clashes	Symm-Clashes
1	A	6957	0	6747	251	0
1	B	6957	0	6747	502	0
1	C	6942	0	6740	388	0
1	D	6957	0	6747	131	0
1	E	6957	0	6747	140	0
2	A	46	0	24	3	0
2	B	46	0	24	7	0
2	D	46	0	24	1	0
2	E	46	0	24	1	0
All	All	34954	0	33824	1362	0

The all-atom clashscore is defined as the number of clashes found per 1000 atoms (including hydrogen atoms). The all-atom clashscore for this structure is 20.

All (1362) close contacts within the same asymmetric unit are listed below, sorted by their clash magnitude.

Atom-1	Atom-2	Interatomic distance (Å)	Clash overlap (Å)
1:C:732:ALA:O	1:C:736:GLU:HB2	1.54	1.04
1:B:327:ASP:HA	1:B:363:ARG:HG2	1.41	0.98
1:B:133:LEU:O	1:B:137:TYR:HB2	1.66	0.96
1:C:704:ASP:O	1:C:708:LYS:HB2	1.66	0.96
1:C:507:ARG:HD2	1:C:605:THR:HG22	1.48	0.93
1:C:331:PHE:O	1:C:335:MET:HB3	1.67	0.92
1:A:754:MET:HE1	1:A:765:LYS:H	1.35	0.91
1:C:95:PHE:O	1:C:99:MET:HB2	1.70	0.90
1:E:331:PHE:O	1:E:335:MET:HB2	1.71	0.90
1:C:764:ILE:HD11	1:C:820:PRO:HG3	1.55	0.89
1:C:339:PRO:HG3	1:C:346:TRP:HB2	1.56	0.88
1:E:610:ALA:HB1	1:E:615:VAL:HB	1.56	0.87
1:C:668:MET:HE1	1:C:680:GLU:HG3	1.55	0.86
1:B:293:ILE:HG22	1:B:298:LEU:HB3	1.56	0.85
1:B:113:PHE:HB2	1:B:281:ALA:HB2	1.58	0.85
1:B:304:LEU:HD11	1:B:373:THR:HG23	1.61	0.83
1:C:85:MET:HA	1:C:88:VAL:HG12	1.59	0.83
1:C:735:LYS:HA	1:C:738:VAL:HB	1.62	0.82

Continued on next page...

Continued from previous page...

Atom-1	Atom-2	Interatomic distance (Å)	Clash overlap (Å)
1:B:47:LEU:HD22	1:B:91:VAL:HG21	1.62	0.81
1:A:725:ASN:HB3	1:A:728:ALA:HB3	1.61	0.81
1:C:338:TYR:HA	1:C:341:ARG:HB2	1.61	0.81
1:C:508:ARG:NH2	1:C:594:ASN:OD1	2.14	0.80
1:A:545:HIS:HB3	1:A:548:ASP:HB2	1.63	0.80
1:A:299:ASN:HB2	1:E:1:MET:SD	2.22	0.80
1:C:325:TYR:HB3	1:C:363:ARG:HB2	1.65	0.79
1:C:513:LYS:HZ2	1:C:596:PRO:HB3	1.47	0.79
1:A:506:CYS:HB2	1:A:592:TRP:CZ2	2.18	0.79
1:A:7:TYR:HB3	1:B:847:TYR:HA	1.64	0.78
1:C:679:LYS:O	1:C:683:GLN:HB2	1.84	0.78
1:B:625:TRP:HZ2	1:B:634:GLY:HA3	1.47	0.78
1:C:782:GLU:HB3	1:C:802:PHE:H	1.48	0.77
1:C:787:LYS:HE3	1:C:797:TYR:HA	1.66	0.77
1:A:84:THR:O	1:A:88:VAL:HG23	1.85	0.77
1:B:742:TRP:HA	1:B:745:ILE:HG12	1.68	0.76
1:C:592:TRP:HD1	1:C:615:VAL:HG11	1.51	0.76
1:B:601:GLU:HG3	1:B:603:SER:H	1.51	0.75
1:B:751:ASP:HB3	1:B:767:GLN:HB3	1.66	0.75
1:C:42:TYR:HA	1:C:45:ARG:HE	1.51	0.75
1:B:620:VAL:C	1:B:622:ASP:H	1.94	0.75
1:C:89:LYS:O	1:C:93:LYS:HB2	1.85	0.75
1:C:748:VAL:HG23	1:C:771:ASP:HB2	1.69	0.75
1:B:308:ARG:HA	1:B:311:SER:HB2	1.67	0.75
1:B:161:LYS:HB2	1:B:173:ASN:HB2	1.68	0.75
1:D:413:VAL:HG11	1:D:609:LLP:HG3	1.66	0.74
1:A:3:ILE:HG21	1:B:735:LYS:HD3	1.69	0.74
1:A:436:MET:HE3	1:A:436:MET:H	1.52	0.74
1:B:185:GLU:HB2	1:B:212:GLN:HB3	1.69	0.74
1:C:142:SER:O	1:C:217:ARG:NH1	2.20	0.74
1:E:112:TYR:OH	1:E:277:ASN:ND2	2.20	0.74
1:B:325:TYR:HB3	1:B:363:ARG:HD2	1.69	0.74
1:B:770:ILE:HG12	1:B:814:PHE:HE2	1.52	0.74
1:C:344:ILE:HB	1:C:349:PHE:HB2	1.70	0.73
1:B:623:GLY:HA2	1:B:626:VAL:HB	1.70	0.73
1:C:87:LYS:O	1:C:91:VAL:HB	1.88	0.73
1:D:668:MET:HE3	1:D:680:GLU:HG3	1.71	0.73
1:C:764:ILE:HB	1:C:818:ILE:HB	1.70	0.73
1:A:36:MET:HG2	1:A:213:MET:HE1	1.70	0.73
1:C:783:LEU:HD12	1:C:799:VAL:HG11	1.70	0.73
1:A:849:LYS:HA	1:E:9:ASN:HD21	1.52	0.72

Continued on next page...

Continued from previous page...

Atom-1	Atom-2	Interatomic distance (Å)	Clash overlap (Å)
1:D:26:LEU:HG	1:D:29:LEU:HD13	1.70	0.72
1:B:368:THR:HG22	1:B:395:ILE:HG23	1.71	0.72
1:A:464:LYS:NZ	1:A:669:TYR:OH	2.22	0.72
1:B:293:ILE:HD11	1:B:342:LEU:HA	1.70	0.72
1:B:549:GLY:HA2	1:B:552:GLN:HG3	1.72	0.72
1:B:603:SER:HB3	1:B:624:TRP:N	2.05	0.71
1:B:325:TYR:HA	1:B:365:CYS:HA	1.71	0.71
1:B:432:ASP:HB3	1:B:444:ILE:HD12	1.71	0.71
1:B:749:SER:HB3	1:B:769:VAL:HB	1.72	0.71
1:B:189:ASP:N	1:B:193:ASN:O	2.15	0.71
1:A:132:MET:HE1	1:A:579:MET:HE3	1.73	0.71
1:A:198:ASP:HB3	1:A:205:GLN:HB3	1.72	0.71
1:B:561:ILE:HG23	1:B:567:PHE:HB3	1.72	0.71
1:A:588:GLY:HA3	2:A:901:AMP:HN62	1.55	0.70
1:B:603:SER:HB3	1:B:624:TRP:H	1.55	0.70
1:E:706:TYR:HA	1:E:710:TYR:HB2	1.74	0.70
1:B:141:ALA:O	1:B:145:ASN:N	2.25	0.70
1:A:593:MET:HE1	1:A:618:LEU:HD13	1.74	0.70
1:C:212:GLN:OE1	1:C:214:ASN:ND2	2.24	0.70
1:C:516:HIS:O	1:C:520:THR:N	2.25	0.70
1:C:620:VAL:HA	1:C:637:LEU:HB3	1.71	0.70
1:A:2:LYS:HD2	1:B:344:ILE:HG12	1.74	0.70
1:D:706:TYR:HA	1:D:710:TYR:HB2	1.74	0.70
1:C:755:LEU:O	1:C:756:MET:HE2	1.92	0.70
1:B:36:MET:HB2	1:B:215:VAL:HA	1.73	0.69
1:B:143:ASP:HB3	1:B:436:MET:HE1	1.73	0.69
1:C:772:GLU:HB3	1:C:812:PHE:CD2	2.27	0.69
1:A:67:LEU:HA	1:A:70:LEU:HG	1.73	0.69
1:C:502:MET:SD	1:C:502:MET:N	2.66	0.69
1:E:354:ARG:HD3	1:E:362:GLU:HB2	1.75	0.69
1:A:213:MET:HE3	1:A:215:VAL:HG22	1.75	0.69
1:B:625:TRP:O	1:B:629:TYR:N	2.26	0.69
1:B:770:ILE:O	1:B:812:PHE:N	2.25	0.69
1:A:54:ASP:OD1	1:A:55:LEU:N	2.25	0.69
1:B:586:VAL:HB	1:B:610:ALA:HB2	1.75	0.69
1:B:591:ILE:HG23	1:B:616:VAL:HG23	1.74	0.69
1:C:103:PRO:HA	1:C:145:ASN:HB3	1.74	0.69
1:C:737:SER:O	1:C:742:TRP:N	2.26	0.69
1:C:249:ARG:O	1:C:253:GLU:HG2	1.93	0.68
1:B:772:GLU:N	1:B:772:GLU:OE1	2.26	0.68
1:E:244:GLY:HA3	1:E:248:ASN:HD22	1.58	0.68

Continued on next page...

Continued from previous page...

Atom-1	Atom-2	Interatomic distance (Å)	Clash overlap (Å)
1:C:85:MET:SD	1:C:85:MET:N	2.65	0.68
1:E:468:VAL:HG11	1:E:498:PRO:HB3	1.74	0.68
1:B:111:ALA:HB2	1:B:271:LYS:HB2	1.76	0.68
1:C:764:ILE:HG22	1:C:766:VAL:HG13	1.75	0.68
1:C:831:ARG:HB3	1:C:848:VAL:HG23	1.74	0.68
1:E:771:ASP:OD2	1:E:773:GLN:NE2	2.27	0.68
1:B:620:VAL:HA	1:B:637:LEU:H	1.58	0.68
1:A:351:GLY:HA2	1:A:354:ARG:HD2	1.76	0.67
1:A:8:ALA:HA	1:B:849:LYS:HA	1.76	0.67
1:C:667:PRO:O	1:C:671:ASN:N	2.27	0.67
1:D:596:PRO:HD2	1:D:620:VAL:HB	1.77	0.67
1:D:351:GLY:HA2	1:D:354:ARG:HG3	1.75	0.67
1:B:289:LEU:O	1:B:293:ILE:HG23	1.94	0.67
1:A:457:TRP:CD2	1:A:461:MET:HE3	2.30	0.67
1:C:641:ARG:HH21	1:C:646:GLN:HA	1.60	0.67
1:A:67:LEU:HD23	1:A:70:LEU:HD11	1.75	0.67
1:C:734:TRP:HZ2	1:C:836:ASN:HB3	1.60	0.67
1:A:43:GLU:HA	1:A:46:ASP:HB3	1.77	0.66
1:B:563:GLN:HA	1:B:568:LEU:HD12	1.77	0.66
1:C:254:ILE:HA	1:C:283:LEU:HD12	1.77	0.66
1:B:133:LEU:O	1:B:137:TYR:CB	2.42	0.66
1:B:184:ILE:HG22	1:B:213:MET:HB2	1.76	0.66
1:B:336:GLY:HA2	1:B:346:TRP:HE1	1.60	0.66
1:C:507:ARG:HE	1:C:603:SER:HB3	1.60	0.66
1:B:505:PHE:HE1	1:B:507:ARG:HE	1.41	0.66
1:B:140:GLU:O	1:B:144:SER:N	2.29	0.66
1:C:392:PHE:HB3	1:C:396:TRP:HZ3	1.61	0.66
1:C:737:SER:HA	1:C:741:ARG:HB3	1.77	0.66
1:B:747:VAL:HG13	1:B:770:ILE:HG22	1.77	0.66
1:D:204:TYR:HH	1:D:334:TYR:HE1	1.42	0.66
1:D:258:ILE:HG13	1:D:287:GLN:HB2	1.78	0.66
1:B:151:VAL:HG22	1:B:221:TYR:HB2	1.78	0.66
1:B:148:MET:HB2	1:B:218:ILE:HD12	1.77	0.66
1:B:767:GLN:O	1:B:767:GLN:HG2	1.95	0.65
1:C:740:GLU:N	1:C:740:GLU:OE1	2.28	0.65
1:C:780:GLY:H	1:C:832:MET:HA	1.60	0.65
1:A:781:LEU:HD11	1:A:830:VAL:HG22	1.76	0.65
1:C:285:ASN:O	1:C:289:LEU:HD22	1.96	0.65
1:C:442:GLU:O	1:C:446:HIS:ND1	2.29	0.65
1:C:313:TYR:N	1:C:374:CYS:SG	2.69	0.65
1:C:706:TYR:HA	1:C:710:TYR:HB2	1.78	0.65

Continued on next page...

Continued from previous page...

Atom-1	Atom-2	Interatomic distance (Å)	Clash overlap (Å)
1:A:506:CYS:HB2	1:A:592:TRP:HZ2	1.60	0.65
1:B:766:VAL:HG12	1:B:768:TYR:H	1.62	0.65
1:E:787:LYS:HB3	1:E:797:TYR:HB2	1.79	0.65
1:A:460:ARG:HB2	1:A:461:MET:HE2	1.79	0.65
1:D:598:ARG:O	1:D:641:ARG:NH1	2.30	0.65
1:B:170:GLN:N	1:B:552:GLN:OE1	2.23	0.64
1:C:293:ILE:HG13	1:C:342:LEU:HD22	1.80	0.64
1:D:352:MET:O	1:D:372:ASN:ND2	2.30	0.64
1:E:843:GLN:N	1:E:843:GLN:OE1	2.30	0.64
1:B:620:VAL:C	1:B:622:ASP:N	2.55	0.64
1:C:24:LYS:HD3	1:C:25:GLU:N	2.12	0.64
1:A:583:ARG:O	1:A:583:ARG:NH1	2.31	0.64
1:B:742:TRP:CD1	1:B:847:TYR:HB3	2.32	0.64
1:C:747:VAL:HA	1:C:770:ILE:HG23	1.78	0.64
1:E:121:GLN:HB2	1:E:579:MET:HB2	1.80	0.64
1:A:339:PRO:HA	1:A:344:ILE:HG13	1.78	0.64
1:E:119:ILE:H	1:E:119:ILE:HD12	1.62	0.64
1:B:738:VAL:HG13	1:B:742:TRP:CD2	2.33	0.64
1:A:96:ARG:O	1:A:100:ASP:N	2.28	0.63
1:B:603:SER:HB3	1:B:623:GLY:HA3	1.80	0.63
1:B:787:LYS:N	1:B:795:GLN:O	2.28	0.63
1:B:633:ALA:HB3	1:B:692:ILE:HD12	1.80	0.63
1:C:518:LEU:HD12	1:C:518:LEU:H	1.63	0.63
1:D:442:GLU:OE1	1:D:695:HIS:NE2	2.31	0.63
1:D:670:TYR:O	1:D:672:LYS:N	2.31	0.63
1:B:291:ASP:HA	1:B:295:GLU:HB2	1.81	0.63
1:C:738:VAL:HG13	1:C:742:TRP:CE3	2.33	0.63
1:B:101:VAL:HG12	1:B:145:ASN:HD21	1.64	0.63
1:C:666:ILE:HB	1:C:667:PRO:HD3	1.79	0.63
1:C:514:ARG:HB3	1:C:517:LEU:HD13	1.80	0.63
1:B:167:ASP:O	1:B:556:LYS:HB2	1.99	0.63
1:D:331:PHE:O	1:D:335:MET:HB2	1.98	0.63
1:A:215:VAL:N	1:A:218:ILE:O	2.32	0.63
1:B:110:VAL:HB	1:B:148:MET:HE1	1.79	0.63
1:B:603:SER:CB	1:B:623:GLY:HA3	2.29	0.63
1:D:236:PRO:HA	1:D:239:TYR:CD1	2.33	0.63
1:B:187:VAL:HG23	1:B:212:GLN:HB2	1.79	0.62
1:C:34:HIS:ND1	1:C:185:GLU:OE1	2.31	0.62
1:E:288:ARG:NH2	1:E:310:SER:OG	2.30	0.62
1:B:325:TYR:CD2	1:B:365:CYS:HB2	2.33	0.62
1:A:390:GLN:O	1:A:393:SER:OG	2.17	0.62

Continued on next page...

Continued from previous page...

Atom-1	Atom-2	Interatomic distance (Å)	Clash overlap (Å)
1:C:506:CYS:HB2	1:C:606:SER:HB2	1.81	0.62
1:D:610:ALA:HB1	1:D:615:VAL:HB	1.81	0.62
1:A:1:MET:O	1:B:299:ASN:ND2	2.33	0.62
1:A:847:TYR:HA	1:E:7:TYR:HB3	1.80	0.62
1:E:225:THR:O	1:E:230:ASN:ND2	2.31	0.62
1:A:19:LYS:O	1:B:759:GLU:HA	1.99	0.62
1:B:320:PRO:HA	1:B:323:HIS:CD2	2.35	0.62
1:B:802:PHE:HB3	1:B:814:PHE:HB3	1.80	0.62
1:C:115:MET:SD	1:C:155:TYR:OH	2.54	0.62
1:B:1:MET:O	1:C:301:ASN:ND2	2.32	0.62
1:B:679:LYS:O	1:B:683:GLN:HB2	1.99	0.62
1:B:753:CYS:HA	1:B:756:MET:HE1	1.81	0.62
1:C:772:GLU:HB3	1:C:812:PHE:CE2	2.35	0.62
1:B:248:ASN:HA	1:B:251:LYS:HG3	1.82	0.62
1:B:301:ASN:OD1	1:B:302:GLN:N	2.32	0.62
1:B:781:LEU:HB3	1:B:802:PHE:HB2	1.82	0.62
1:C:71:SER:O	1:C:75:LYS:N	2.33	0.62
1:C:166:MET:HA	1:C:166:MET:HE2	1.82	0.62
1:B:746:HIS:O	1:B:770:ILE:HB	1.99	0.61
1:C:323:HIS:HB2	1:C:325:TYR:HE1	1.63	0.61
1:C:620:VAL:HG22	1:C:637:LEU:HD22	1.81	0.61
1:D:577:TYR:HA	1:D:581:LEU:HD23	1.82	0.61
1:B:323:HIS:HB2	1:B:325:TYR:CE1	2.35	0.61
1:C:352:MET:HE2	1:C:372:ASN:HD21	1.64	0.61
1:A:515:ALA:HB3	1:A:554:LEU:HD21	1.81	0.61
1:A:534:HIS:HB3	1:A:670:TYR:CD2	2.35	0.61
1:B:804:MET:HE1	1:B:812:PHE:HB3	1.81	0.61
1:E:607:GLY:HA3	1:E:624:TRP:CZ2	2.35	0.61
1:A:72:TYR:O	1:A:75:LYS:HB2	2.01	0.61
1:A:577:TYR:HA	1:A:581:LEU:HD23	1.82	0.61
1:A:696:TYR:HA	1:A:700:ARG:HH21	1.66	0.61
1:B:240:SER:O	1:B:252:GLN:NE2	2.33	0.61
1:C:278:GLU:HB3	1:C:280:HIS:ND1	2.15	0.61
1:C:369:PHE:O	1:C:372:ASN:ND2	2.34	0.61
1:A:659:ASN:OD1	1:A:663:ASN:ND2	2.33	0.61
1:B:254:ILE:O	1:B:258:ILE:HG22	2.00	0.61
1:C:96:ARG:O	1:C:100:ASP:N	2.34	0.61
1:B:33:ALA:HB2	1:B:67:LEU:HD12	1.83	0.61
1:B:619:SER:O	1:B:636:ALA:HA	2.01	0.61
1:C:767:GLN:HA	1:C:814:PHE:H	1.64	0.61
1:E:358:ASP:OD1	1:E:358:ASP:N	2.31	0.61

Continued on next page...

Continued from previous page...

Atom-1	Atom-2	Interatomic distance (Å)	Clash overlap (Å)
1:A:80:LYS:O	1:A:82:LYS:NZ	2.33	0.60
1:E:352:MET:O	1:E:372:ASN:ND2	2.32	0.60
1:B:666:ILE:HB	1:B:667:PRO:HD3	1.83	0.60
1:C:83:GLU:O	1:C:87:LYS:HG2	2.01	0.60
1:B:399:TYR:OH	1:B:842:ARG:HB2	2.01	0.60
1:C:311:SER:HB2	1:C:374:CYS:HA	1.83	0.60
1:A:215:VAL:HB	1:A:218:ILE:HB	1.84	0.60
1:A:445:TRP:CG	1:A:694:PRO:HB3	2.37	0.60
1:B:29:LEU:HD23	1:B:32:ILE:HD12	1.82	0.60
1:B:162:GLN:HG3	1:B:170:GLN:HG3	1.82	0.60
1:E:227:ASN:OD1	1:E:230:ASN:ND2	2.35	0.60
1:C:392:PHE:HB3	1:C:396:TRP:CZ3	2.36	0.60
1:C:110:VAL:HG22	1:C:273:ILE:HB	1.83	0.60
1:C:729:LYS:O	1:C:733:LEU:HG	2.01	0.60
1:A:229:MET:SD	1:A:229:MET:N	2.75	0.60
1:B:55:LEU:HD23	1:B:66:LEU:HG	1.83	0.60
1:B:507:ARG:NH2	1:B:593:MET:O	2.34	0.60
1:B:603:SER:OG	1:B:623:GLY:HA3	2.02	0.60
1:B:727:LEU:HA	1:B:730:GLU:HB3	1.83	0.60
1:C:737:SER:O	1:C:741:ARG:C	2.44	0.60
1:C:752:ASP:HB2	1:C:767:GLN:H	1.67	0.60
1:D:165:SER:OG	1:D:166:MET:N	2.33	0.60
1:B:448:ILE:HD13	1:B:689:ILE:HG22	1.84	0.60
1:D:54:ASP:N	1:D:54:ASP:OD1	2.33	0.60
1:A:706:TYR:HA	1:A:710:TYR:HB2	1.83	0.60
1:B:110:VAL:HG13	1:B:273:ILE:HB	1.82	0.60
1:C:455:GLU:O	1:C:459:THR:HG23	2.02	0.60
1:C:467:LEU:HD22	1:C:588:GLY:HA3	1.83	0.60
1:C:508:ARG:HA	1:C:513:LYS:HG2	1.82	0.60
1:B:420:ALA:O	1:B:424:ARG:N	2.29	0.59
1:B:436:MET:HE3	1:B:436:MET:O	2.01	0.59
1:C:278:GLU:HB3	1:C:280:HIS:HD1	1.67	0.59
1:C:593:MET:HG2	1:C:618:LEU:O	2.02	0.59
1:B:137:TYR:CE1	1:B:702:LEU:HG	2.37	0.59
1:B:698:MET:HG2	1:B:701:GLN:HB3	1.83	0.59
1:B:706:TYR:HA	1:B:710:TYR:HB2	1.85	0.59
1:C:641:ARG:NH2	1:C:644:GLN:O	2.33	0.59
1:E:132:MET:HA	1:E:132:MET:HE3	1.83	0.59
1:B:625:TRP:O	1:B:626:VAL:C	2.44	0.59
1:A:33:ALA:HA	1:A:38:TRP:HE1	1.66	0.59
1:A:85:MET:HE3	1:A:85:MET:HA	1.83	0.59

Continued on next page...

Continued from previous page...

Atom-1	Atom-2	Interatomic distance (Å)	Clash overlap (Å)
1:A:300:PHE:O	1:A:301:ASN:C	2.45	0.59
1:C:381:SER:O	1:C:385:GLY:N	2.35	0.59
1:B:365:CYS:SG	1:B:367:SER:HB2	2.42	0.59
1:A:3:ILE:HD11	1:B:736:GLU:HG2	1.83	0.59
1:B:735:LYS:HE2	1:B:845:PHE:HB2	1.85	0.59
1:A:48:PHE:HA	1:A:51:LEU:HG	1.84	0.59
1:B:213:MET:HB3	1:B:220:LEU:HD23	1.84	0.59
1:B:288:ARG:NH1	1:B:309:ALA:HB3	2.17	0.59
1:D:52:ASP:OD1	1:D:52:ASP:N	2.36	0.59
1:A:111:ALA:N	1:A:273:ILE:O	2.35	0.58
1:A:436:MET:H	1:A:436:MET:CE	2.15	0.58
1:B:185:GLU:N	1:B:212:GLN:O	2.35	0.58
1:B:579:MET:O	1:B:580:THR:C	2.46	0.58
1:B:770:ILE:HG12	1:B:814:PHE:CE2	2.35	0.58
1:C:330:LEU:HA	1:C:333:LYS:HD3	1.84	0.58
1:C:665:ILE:HA	1:C:668:MET:HB3	1.85	0.58
1:D:415:PHE:HE2	1:D:436:MET:HE1	1.67	0.58
1:A:593:MET:HE2	1:A:593:MET:HA	1.86	0.58
1:B:411:ASN:OD1	1:B:701:GLN:NE2	2.36	0.58
1:E:243:GLY:O	1:E:248:ASN:ND2	2.36	0.58
1:B:114:CYS:N	1:B:117:TYR:OH	2.35	0.58
1:B:200:PRO:HG2	1:B:258:ILE:HD11	1.85	0.58
1:B:326:PHE:CE2	1:B:366:LEU:HB2	2.38	0.58
1:B:764:ILE:O	1:B:817:GLU:HA	2.03	0.58
1:C:312:LEU:N	1:C:374:CYS:SG	2.76	0.58
1:A:582:ALA:O	1:A:586:VAL:HG12	2.04	0.58
1:C:37:TRP:HH2	1:C:91:VAL:HG13	1.68	0.58
1:C:277:ASN:O	1:C:316:HIS:ND1	2.37	0.58
1:C:298:LEU:HD22	1:C:302:GLN:HG2	1.86	0.58
1:A:326:PHE:O	1:A:364:PHE:N	2.37	0.58
1:C:98:TYR:CE2	1:C:99:MET:HE3	2.38	0.58
1:A:167:ASP:HB3	1:A:556:LYS:HE2	1.85	0.58
1:B:285:ASN:HB3	1:B:307:VAL:HG22	1.86	0.58
1:D:254:ILE:HD12	1:D:258:ILE:HD13	1.85	0.58
1:C:740:GLU:O	1:C:743:ASP:HB3	2.03	0.58
1:E:597:THR:O	1:E:600:LEU:N	2.37	0.58
1:C:785:VAL:HG21	1:C:800:TYR:CD2	2.39	0.58
1:E:198:ASP:HB3	1:E:205:GLN:HB3	1.86	0.58
1:A:111:ALA:HB2	1:A:271:LYS:HB2	1.85	0.57
1:A:244:GLY:HA3	1:A:248:ASN:HD22	1.67	0.57
1:B:74:ARG:HH21	1:B:78:ILE:HG13	1.69	0.57

Continued on next page...

Continued from previous page...

Atom-1	Atom-2	Interatomic distance (Å)	Clash overlap (Å)
1:B:308:ARG:HG2	1:B:716:ARG:HH11	1.69	0.57
1:C:595:THR:HA	1:C:620:VAL:HG23	1.85	0.57
1:B:561:ILE:HG23	1:B:567:PHE:CB	2.35	0.57
1:A:748:VAL:HG23	1:A:771:ASP:HB2	1.86	0.57
1:C:831:ARG:HG3	1:C:833:TYR:HD2	1.69	0.57
1:B:306:LEU:HG	1:B:728:ALA:HB2	1.87	0.57
1:B:317:THR:HG21	1:B:322:GLY:C	2.29	0.57
1:D:212:GLN:NE2	1:D:214:ASN:OD1	2.36	0.57
1:A:21:SER:HB3	1:B:760:THR:HB	1.86	0.57
1:C:261:ILE:HA	1:C:264:LEU:HD12	1.87	0.57
1:C:505:PHE:CZ	1:C:593:MET:HE1	2.39	0.57
1:D:783:LEU:HB3	1:D:800:TYR:HB2	1.85	0.57
1:A:293:ILE:HD12	1:A:342:LEU:HD23	1.86	0.57
1:A:427:TYR:O	1:A:431:PHE:N	2.36	0.57
1:B:286:LEU:O	1:B:289:LEU:HB2	2.05	0.57
1:C:503:ILE:HD12	1:C:538:PHE:CE1	2.39	0.57
1:C:528:ILE:HG12	1:C:662:GLU:HG2	1.86	0.57
1:D:754:MET:HG3	1:D:764:ILE:HG23	1.87	0.57
1:C:598:ARG:N	1:C:599:PRO:HD2	2.20	0.57
1:D:769:VAL:HG22	1:D:813:THR:HG22	1.86	0.57
1:E:518:LEU:O	1:E:658:TYR:OH	2.23	0.57
1:B:352:MET:HG3	1:B:369:PHE:HB2	1.87	0.57
1:B:502:MET:HB3	1:B:589:VAL:HA	1.85	0.57
1:C:641:ARG:HH21	1:C:646:GLN:CA	2.17	0.57
1:D:445:TRP:CD1	1:D:694:PRO:HB3	2.40	0.57
1:A:13:TRP:HB3	1:B:827:LYS:HB3	1.87	0.57
1:B:356:ASN:HD21	1:B:362:GLU:HB2	1.69	0.57
1:B:750:LYS:HD2	1:B:752:ASP:H	1.68	0.57
1:C:379:GLY:H	1:C:408:TYR:HA	1.69	0.57
1:A:507:ARG:HG2	1:A:513:LYS:NZ	2.20	0.56
1:B:27:LYS:HE3	1:B:27:LYS:HA	1.86	0.56
1:D:424:ARG:HH21	1:D:436:MET:HE3	1.70	0.56
1:B:90:ASN:O	1:B:93:LYS:HB3	2.05	0.56
1:B:118:GLY:HA2	1:B:126:TYR:CG	2.41	0.56
1:B:383:LEU:HD11	1:B:623:GLY:HA2	1.86	0.56
1:C:755:LEU:C	1:C:756:MET:HE2	2.30	0.56
1:C:777:ASP:O	1:C:836:ASN:ND2	2.36	0.56
1:C:734:TRP:CZ2	1:C:836:ASN:HB3	2.41	0.56
1:D:250:LEU:O	1:D:254:ILE:HG22	2.06	0.56
1:E:115:MET:HE2	1:E:280:HIS:HB3	1.86	0.56
1:A:265:LYS:HA	1:A:270:LYS:HZ2	1.70	0.56

Continued on next page...

Continued from previous page...

Atom-1	Atom-2	Interatomic distance (Å)	Clash overlap (Å)
1:C:368:THR:HA	1:C:371:CYS:SG	2.46	0.56
1:C:738:VAL:O	1:C:742:TRP:HB2	2.06	0.56
1:C:786:LEU:HA	1:C:796:VAL:HA	1.86	0.56
1:B:310:SER:C	1:B:312:LEU:H	2.14	0.56
1:B:598:ARG:HH11	1:B:639:GLU:HA	1.71	0.56
1:B:606:SER:HA	1:B:609:LLP:C4'	2.35	0.56
1:A:422:GLU:HA	1:A:425:LYS:HE2	1.87	0.56
1:B:522:LEU:O	1:B:526:SER:OG	2.22	0.56
1:B:706:TYR:O	1:B:711:ASN:ND2	2.39	0.56
1:C:337:GLY:O	1:C:340:GLN:NE2	2.39	0.56
1:B:13:TRP:HB3	1:C:827:LYS:HE3	1.88	0.56
1:A:95:PHE:O	1:A:99:MET:HB2	2.06	0.56
1:A:68:GLU:HG2	1:A:69:ARG:HE	1.71	0.55
1:B:325:TYR:CB	1:B:363:ARG:HD2	2.35	0.55
1:B:630:ARG:HB2	1:B:692:ILE:HD11	1.86	0.55
1:B:633:ALA:HB3	1:B:692:ILE:CD1	2.36	0.55
1:C:747:VAL:HB	1:C:770:ILE:HD12	1.87	0.55
1:B:18:ILE:HG22	1:C:758:ALA:HA	1.88	0.55
1:B:55:LEU:HG	1:B:59:CYS:HB3	1.88	0.55
1:B:745:ILE:HG23	1:B:772:GLU:HG3	1.87	0.55
1:A:850:TRP:CD2	1:E:11:PRO:HB3	2.42	0.55
1:B:250:LEU:HD12	1:B:330:LEU:HG	1.88	0.55
1:C:116:GLU:HG3	1:C:131:GLY:N	2.21	0.55
1:C:209:TYR:HB2	1:C:224:ASP:HB3	1.88	0.55
1:C:661:LEU:HG	1:C:666:ILE:HG12	1.88	0.55
1:A:108:PRO:HD2	1:A:706:TYR:HE1	1.70	0.55
1:B:35:ASN:HA	1:B:214:ASN:HB2	1.89	0.55
1:B:117:TYR:N	1:B:125:ILE:O	2.36	0.55
1:B:784:VAL:HG12	1:B:799:VAL:HG22	1.87	0.55
1:C:36:MET:HE2	1:C:39:ALA:HB2	1.88	0.55
1:C:503:ILE:HG23	1:C:591:ILE:HB	1.88	0.55
1:E:381:SER:O	1:E:385:GLY:N	2.38	0.55
1:B:117:TYR:C	1:B:126:TYR:HB3	2.32	0.55
1:B:441:ASN:HB3	1:B:444:ILE:HG22	1.89	0.55
1:C:213:MET:HB3	1:C:220:LEU:HB3	1.89	0.55
1:C:289:LEU:O	1:C:293:ILE:HG12	2.07	0.55
1:C:389:GLN:O	1:C:393:SER:HB3	2.07	0.55
1:E:368:THR:HG23	1:E:395:ILE:HD11	1.87	0.55
1:A:3:ILE:H	1:B:301:ASN:HB2	1.72	0.55
1:A:738:VAL:O	1:A:742:TRP:HB2	2.07	0.55
1:D:80:LYS:HE3	1:D:80:LYS:HA	1.88	0.55

Continued on next page...

Continued from previous page...

Atom-1	Atom-2	Interatomic distance (Å)	Clash overlap (Å)
1:A:23:PRO:HD2	1:A:26:LEU:HD11	1.89	0.55
1:B:365:CYS:HB3	1:B:368:THR:OG1	2.06	0.55
1:B:383:LEU:H	1:B:383:LEU:HD12	1.72	0.55
1:A:752:ASP:OD1	1:A:752:ASP:N	2.36	0.55
1:C:123:VAL:HG22	1:C:183:PRO:HD2	1.89	0.55
1:A:147:ASP:OD1	1:A:271:LYS:NZ	2.28	0.55
1:B:98:TYR:O	1:B:217:ARG:NE	2.40	0.55
1:B:548:ASP:OD1	1:B:549:GLY:N	2.40	0.55
1:B:591:ILE:HG13	1:B:681:TRP:HH2	1.72	0.55
1:B:623:GLY:O	1:B:624:TRP:C	2.49	0.55
1:C:156:ARG:NE	1:C:226:ASP:OD2	2.28	0.55
1:E:123:VAL:HG11	1:E:213:MET:HE1	1.89	0.55
1:E:467:LEU:HD22	1:E:588:GLY:HA3	1.89	0.55
1:E:620:VAL:HA	1:E:637:LEU:HB2	1.89	0.55
1:A:261:ILE:HG21	1:A:287:GLN:HG3	1.88	0.54
1:B:445:TRP:CG	1:B:694:PRO:HB3	2.42	0.54
1:D:621:LEU:HG	1:D:636:ALA:HB1	1.89	0.54
1:B:40:TRP:CE3	1:B:139:LYS:HD3	2.43	0.54
1:C:728:ALA:O	1:C:731:ILE:HB	2.07	0.54
1:E:258:ILE:HD12	1:E:287:GLN:HB2	1.90	0.54
1:C:99:MET:HE2	1:C:99:MET:HA	1.90	0.54
1:C:725:ASN:HB3	1:C:728:ALA:HB3	1.89	0.54
1:B:261:ILE:HG21	1:B:287:GLN:HB3	1.88	0.54
1:B:356:ASN:ND2	1:B:362:GLU:HB2	2.22	0.54
1:B:388:SER:HA	1:B:391:MET:HE2	1.90	0.54
1:D:844:ASP:OD1	1:D:845:PHE:N	2.40	0.54
1:A:194:PRO:HB2	1:A:209:TYR:CE1	2.43	0.54
1:B:298:LEU:HG	1:B:302:GLN:HB3	1.90	0.54
1:B:720:LEU:O	1:B:727:LEU:HB2	2.08	0.54
1:B:832:MET:O	1:B:848:VAL:HG23	2.07	0.54
1:B:841:HIS:ND1	1:B:843:GLN:HB2	2.23	0.54
1:C:501:LEU:HD21	1:C:591:ILE:HD13	1.90	0.54
1:E:249:ARG:O	1:E:253:GLU:HG2	2.07	0.54
1:A:308:ARG:HH21	1:A:844:ASP:HA	1.73	0.54
1:A:514:ARG:NH2	1:A:596:PRO:O	2.41	0.54
1:B:804:MET:CE	1:B:812:PHE:HB3	2.38	0.54
1:C:788:GLU:N	1:C:788:GLU:OE1	2.40	0.54
1:A:156:ARG:NH2	1:A:177:GLN:O	2.40	0.54
1:A:518:LEU:O	1:A:658:TYR:OH	2.24	0.54
1:A:227:ASN:OD1	1:A:230:ASN:ND2	2.41	0.53
1:B:35:ASN:HB2	1:B:95:PHE:CZ	2.43	0.53

Continued on next page...

Continued from previous page...

Atom-1	Atom-2	Interatomic distance (Å)	Clash overlap (Å)
1:B:48:PHE:CG	1:B:63:PRO:HB3	2.44	0.53
1:B:187:VAL:CG2	1:B:212:GLN:HB2	2.38	0.53
1:D:245:ASP:OD1	1:D:247:GLU:N	2.41	0.53
1:E:538:PHE:HB2	1:E:571:ILE:HG13	1.91	0.53
1:B:1:MET:HE1	1:C:739:ALA:HB1	1.90	0.53
1:B:620:VAL:O	1:B:622:ASP:N	2.35	0.53
1:D:127:SER:HB3	1:D:241:LEU:HD12	1.90	0.53
1:E:236:PRO:HA	1:E:239:TYR:CG	2.42	0.53
1:E:577:TYR:HA	1:E:581:LEU:HD23	1.89	0.53
1:E:607:GLY:O	1:E:611:GLU:HG2	2.07	0.53
1:E:655:ALA:O	1:E:659:ASN:ND2	2.41	0.53
1:A:731:ILE:HG12	1:A:838:LYS:HD2	1.89	0.53
1:B:112:TYR:HA	1:B:275:HIS:HB3	1.90	0.53
1:B:197:VAL:O	1:B:199:VAL:N	2.41	0.53
1:B:628:GLY:O	1:B:629:TYR:C	2.51	0.53
1:C:257:GLY:O	1:C:258:ILE:C	2.50	0.53
1:C:617:ASN:O	1:C:635:TRP:HB3	2.08	0.53
1:A:561:ILE:HA	1:A:564:ARG:HD3	1.90	0.53
1:B:510:ALA:HB3	1:B:513:LYS:HG3	1.91	0.53
1:B:584:ARG:HA	2:B:901:AMP:C2	2.43	0.53
1:A:108:PRO:HD2	1:A:706:TYR:CE1	2.43	0.53
1:C:514:ARG:HB3	1:C:517:LEU:CD1	2.38	0.53
1:C:720:LEU:O	1:C:728:ALA:N	2.41	0.53
1:E:621:LEU:HG	1:E:636:ALA:HB1	1.90	0.53
1:A:439:GLN:O	1:A:445:TRP:NE1	2.20	0.53
1:B:166:MET:HE3	1:B:483:GLN:HG2	1.90	0.53
1:B:540:PHE:O	1:B:574:LEU:N	2.38	0.53
1:C:111:ALA:N	1:C:273:ILE:O	2.32	0.53
1:C:377:VAL:HG21	1:C:396:TRP:HH2	1.73	0.53
1:D:381:SER:O	1:D:385:GLY:N	2.41	0.53
1:A:731:ILE:HG23	1:A:838:LYS:HE3	1.91	0.53
1:B:23:PRO:HG2	1:B:26:LEU:HD12	1.91	0.53
1:B:52:ASP:HB3	1:B:55:LEU:HB3	1.90	0.53
1:B:318:PRO:HD2	2:B:902:AMP:H1'	1.90	0.53
1:B:587:SER:OG	2:B:901:AMP:N1	2.41	0.53
1:C:301:ASN:O	1:C:305:GLU:HG2	2.08	0.53
1:C:586:VAL:HA	1:C:592:TRP:HE1	1.74	0.53
1:C:650:ASP:O	1:C:651:GLN:C	2.51	0.53
1:C:745:ILE:HG23	1:C:778:ALA:HB1	1.91	0.53
1:D:740:GLU:HG3	1:D:741:ARG:HG3	1.90	0.53
1:A:362:GLU:HG2	1:A:363:ARG:N	2.24	0.53

Continued on next page...

Continued from previous page...

Atom-1	Atom-2	Interatomic distance (Å)	Clash overlap (Å)
1:B:207:HIS:HB3	1:B:209:TYR:CE1	2.44	0.53
1:B:306:LEU:HD11	1:B:725:ASN:HB3	1.91	0.53
1:C:108:PRO:HD2	1:C:706:TYR:HE1	1.74	0.53
1:C:759:GLU:HG3	1:C:760:THR:H	1.74	0.53
1:E:422:GLU:N	1:E:422:GLU:OE1	2.42	0.53
1:A:8:ALA:HB1	1:B:850:TRP:CD1	2.44	0.53
1:B:804:MET:HE2	1:B:804:MET:HA	1.91	0.53
1:C:150:ALA:HB3	1:C:220:LEU:HD13	1.90	0.53
1:C:399:TYR:HE2	1:C:846:CYS:HA	1.73	0.53
1:C:729:LYS:O	1:C:732:ALA:HB3	2.08	0.53
1:C:768:TYR:O	1:C:770:ILE:HG12	2.08	0.53
1:B:39:ALA:HA	1:B:45:ARG:HH21	1.74	0.53
1:E:237:ILE:HG22	1:E:238:THR:HG23	1.91	0.53
1:B:327:ASP:HB3	1:B:330:LEU:CB	2.40	0.52
1:B:556:LYS:HD2	1:B:557:LYS:N	2.23	0.52
1:C:115:MET:HE2	1:C:280:HIS:HD2	1.73	0.52
1:D:610:ALA:O	1:D:611:GLU:C	2.51	0.52
1:A:562:SER:HA	1:A:571:ILE:HG23	1.91	0.52
1:C:130:LEU:HD11	1:C:277:ASN:HB3	1.92	0.52
1:C:775:LEU:HD12	1:C:775:LEU:H	1.74	0.52
1:D:384:HIS:HB2	1:D:602:ALA:O	2.09	0.52
1:A:64:VAL:HG21	1:A:183:PRO:HG3	1.91	0.52
1:B:308:ARG:CA	1:B:311:SER:HB2	2.38	0.52
1:B:354:ARG:HB2	1:B:357:ALA:HA	1.91	0.52
1:B:414:HIS:ND1	1:B:417:THR:OG1	2.42	0.52
1:A:457:TRP:O	1:A:461:MET:HG2	2.10	0.52
1:B:20:SER:HB2	1:C:823:ALA:HB2	1.91	0.52
1:B:276:CYS:HA	1:B:281:ALA:HB3	1.91	0.52
1:B:313:TYR:O	1:B:377:VAL:HA	2.10	0.52
1:B:383:LEU:HD11	1:B:626:VAL:CG1	2.39	0.52
1:D:748:VAL:HB	1:D:769:VAL:HG12	1.91	0.52
1:A:460:ARG:NH2	1:A:590:ASP:OD1	2.42	0.52
1:C:657:ILE:O	1:C:661:LEU:N	2.43	0.52
1:D:466:LYS:HB3	2:D:902:AMP:N7	2.24	0.52
1:A:49:LYS:C	1:A:51:LEU:N	2.67	0.52
1:A:300:PHE:HB3	1:E:1:MET:O	2.08	0.52
1:B:476:THR:O	1:B:480:LEU:HG	2.09	0.52
1:E:404:ASN:HA	1:E:843:GLN:HE21	1.75	0.52
1:B:745:ILE:HD13	1:B:772:GLU:HB3	1.91	0.52
1:C:261:ILE:HD13	1:C:264:LEU:HD12	1.92	0.52
1:C:502:MET:HG2	1:C:589:VAL:HA	1.91	0.52

Continued on next page...

Continued from previous page...

Atom-1	Atom-2	Interatomic distance (Å)	Clash overlap (Å)
1:C:577:TYR:HA	1:C:581:LEU:HD23	1.91	0.52
1:C:731:ILE:HG23	1:C:735:LYS:HB3	1.91	0.52
1:C:758:ALA:O	1:C:762:GLN:NE2	2.42	0.52
1:D:518:LEU:O	1:D:658:TYR:OH	2.26	0.52
1:E:782:GLU:OE2	1:E:831:ARG:NE	2.35	0.52
1:A:17:THR:HA	1:B:825:SER:HA	1.91	0.52
1:B:603:SER:C	1:B:624:TRP:HB3	2.34	0.52
1:C:647:GLY:O	1:C:651:GLN:HG2	2.10	0.52
1:D:167:ASP:OD1	1:D:167:ASP:N	2.35	0.52
1:A:292:TYR:HA	1:A:296:ASP:HB2	1.92	0.52
1:B:118:GLY:HA2	1:B:126:TYR:CD1	2.45	0.52
1:C:735:LYS:HE3	1:C:839:LEU:HD21	1.92	0.52
1:C:737:SER:O	1:C:741:ARG:HB3	2.10	0.52
1:C:808:GLU:HB2	1:C:811:ASN:O	2.09	0.52
1:B:36:MET:HG2	1:B:213:MET:SD	2.50	0.52
1:B:143:ASP:CB	1:B:436:MET:HE1	2.38	0.52
1:B:312:LEU:HA	1:B:376:GLU:HB3	1.91	0.52
1:B:410:THR:HG21	1:B:696:TYR:CE1	2.44	0.52
1:B:486:PRO:HG2	1:C:645:ASN:OD1	2.10	0.52
1:C:84:THR:OG1	1:C:85:MET:SD	2.67	0.52
1:C:604:GLY:O	1:C:608:GLU:HG3	2.10	0.52
1:E:754:MET:SD	1:E:754:MET:N	2.78	0.52
1:A:379:GLY:H	1:A:408:TYR:HA	1.74	0.51
1:C:300:PHE:O	1:C:304:LEU:HB2	2.10	0.51
1:C:610:ALA:HB1	1:C:615:VAL:HB	1.93	0.51
1:C:837:ASP:OD1	1:C:837:ASP:N	2.40	0.51
1:D:186:ARG:HD3	1:D:194:PRO:HB3	1.92	0.51
1:E:535:PRO:O	1:E:670:TYR:OH	2.26	0.51
1:B:146:VAL:HG23	1:B:148:MET:SD	2.50	0.51
1:B:837:ASP:OD1	1:B:837:ASP:N	2.38	0.51
1:C:36:MET:HE3	1:C:36:MET:HA	1.93	0.51
1:C:55:LEU:HD21	1:C:69:ARG:HB3	1.91	0.51
1:A:104:ASN:OD1	1:A:106:LYS:NZ	2.41	0.51
1:A:161:LYS:HB3	1:A:173:ASN:HB2	1.93	0.51
1:B:115:MET:HE1	1:B:241:LEU:HB3	1.92	0.51
1:B:264:LEU:HG	1:B:274:TYR:HE1	1.73	0.51
1:B:783:LEU:HB2	1:B:802:PHE:CE1	2.46	0.51
1:C:781:LEU:HG	1:C:802:PHE:O	2.09	0.51
1:D:2:LYS:O	1:E:301:ASN:ND2	2.35	0.51
1:D:166:MET:HE1	1:D:482:ASN:HA	1.92	0.51
1:E:432:ASP:OD1	1:E:433:LYS:N	2.42	0.51

Continued on next page...

Continued from previous page...

Atom-1	Atom-2	Interatomic distance (Å)	Clash overlap (Å)
1:E:620:VAL:HG22	1:E:637:LEU:HD22	1.92	0.51
1:B:598:ARG:NH1	1:B:638:PRO:O	2.44	0.51
1:C:505:PHE:CE2	1:C:593:MET:HE1	2.45	0.51
1:E:282:ALA:HB3	1:E:366:LEU:HD22	1.93	0.51
1:A:402:GLU:H	1:A:402:GLU:CD	2.16	0.51
1:A:834:PRO:HD3	1:A:847:TYR:O	2.10	0.51
1:B:737:SER:O	1:B:741:ARG:HB2	2.09	0.51
1:C:46:ASP:O	1:C:50:SER:OG	2.28	0.51
1:C:668:MET:CE	1:C:680:GLU:HG3	2.35	0.51
1:D:749:SER:HB3	1:D:769:VAL:HB	1.93	0.51
1:E:403:GLU:O	1:E:843:GLN:NE2	2.44	0.51
1:B:189:ASP:OD1	1:B:190:GLU:HG2	2.11	0.51
1:B:309:ALA:HB2	1:B:717:PHE:CD1	2.46	0.51
1:B:388:SER:HB3	1:B:392:PHE:CE2	2.45	0.51
1:B:750:LYS:HD3	1:B:752:ASP:OD2	2.11	0.51
1:B:764:ILE:HG21	1:B:818:ILE:HD12	1.93	0.51
1:A:49:LYS:C	1:A:51:LEU:H	2.19	0.51
1:B:4:LYS:NZ	1:C:847:TYR:OH	2.43	0.51
1:B:132:MET:HE3	1:B:609:LLP:NZ	2.25	0.51
1:C:590:ASP:HB2	1:C:591:ILE:HD12	1.91	0.51
1:E:102:LYS:O	1:E:145:ASN:ND2	2.43	0.51
1:B:524:ARG:HG3	1:B:527:LYS:HE3	1.93	0.51
1:B:558:ILE:HA	1:B:561:ILE:HB	1.92	0.51
1:C:88:VAL:O	1:C:92:TYR:HB3	2.11	0.51
1:C:187:VAL:HG22	1:C:212:GLN:HB2	1.91	0.51
1:D:700:ARG:NH1	1:D:704:ASP:OD2	2.43	0.51
1:B:327:ASP:HB3	1:B:330:LEU:HB2	1.93	0.51
1:B:419:THR:HB	1:B:424:ARG:HD3	1.92	0.51
1:B:726:ALA:HA	1:B:729:LYS:HG3	1.93	0.51
1:B:843:GLN:O	1:B:844:ASP:C	2.53	0.51
1:C:346:TRP:HA	1:C:349:PHE:HB3	1.92	0.51
1:E:472:ARG:HG2	1:E:493:LEU:HD22	1.92	0.51
1:B:170:GLN:HB3	1:B:552:GLN:NE2	2.26	0.51
1:B:495:ARG:NH1	1:B:568:LEU:HD23	2.26	0.51
1:B:766:VAL:HG11	1:B:802:PHE:HD2	1.76	0.51
1:D:299:ASN:OD1	1:D:302:GLN:HG3	2.11	0.51
1:A:124:LYS:C	1:A:125:ILE:HD13	2.36	0.50
1:B:13:TRP:CB	1:C:827:LYS:HE3	2.41	0.50
1:B:274:TYR:H	1:B:310:SER:HB3	1.76	0.50
1:B:664:ASP:O	1:B:668:MET:N	2.44	0.50
1:B:584:ARG:HB2	2:B:901:AMP:C5	2.47	0.50

Continued on next page...

Continued from previous page...

Atom-1	Atom-2	Interatomic distance (Å)	Clash overlap (Å)
1:C:132:MET:HE3	1:C:609:LLP:HE3	1.92	0.50
1:C:338:TYR:N	1:C:339:PRO:HD2	2.26	0.50
1:C:535:PRO:O	1:C:670:TYR:OH	2.28	0.50
1:D:850:TRP:O	1:D:852:ASN:ND2	2.44	0.50
1:E:308:ARG:NH1	1:E:372:ASN:O	2.45	0.50
1:A:265:LYS:HA	1:A:270:LYS:NZ	2.26	0.50
1:B:344:ILE:HG13	1:B:345:SER:H	1.77	0.50
1:C:753:CYS:O	1:C:754:MET:HG3	2.11	0.50
1:D:535:PRO:O	1:D:670:TYR:OH	2.27	0.50
1:E:156:ARG:NE	1:E:226:ASP:OD2	2.40	0.50
1:A:73:ASP:O	1:A:76:GLU:N	2.45	0.50
1:B:738:VAL:HG13	1:B:742:TRP:CE2	2.46	0.50
1:C:391:MET:HE2	1:C:392:PHE:CE1	2.47	0.50
1:C:756:MET:O	1:C:764:ILE:HG12	2.12	0.50
1:D:204:TYR:OH	1:D:334:TYR:HE1	1.94	0.50
1:A:318:PRO:HD3	1:A:602:ALA:HB2	1.93	0.50
1:B:353:GLY:O	1:B:365:CYS:N	2.44	0.50
1:B:596:PRO:HG2	1:B:601:GLU:HB2	1.93	0.50
1:C:507:ARG:HA	1:C:509:PHE:CE2	2.46	0.50
1:C:800:TYR:HB3	1:C:818:ILE:HG21	1.92	0.50
1:A:150:ALA:HB3	1:A:220:LEU:HD13	1.93	0.50
1:A:286:LEU:HD11	1:A:342:LEU:HD11	1.93	0.50
1:A:593:MET:HE1	1:A:618:LEU:HB3	1.94	0.50
1:A:754:MET:SD	1:A:764:ILE:HG13	2.51	0.50
1:B:32:ILE:HA	1:B:95:PHE:CZ	2.47	0.50
1:C:22:LEU:HD22	1:C:26:LEU:HB3	1.92	0.50
1:C:24:LYS:HD3	1:C:25:GLU:H	1.77	0.50
1:C:189:ASP:N	1:C:193:ASN:O	2.35	0.50
1:C:668:MET:HE3	1:C:668:MET:O	2.11	0.50
1:A:73:ASP:O	1:A:74:ARG:C	2.53	0.50
1:A:678:SER:C	1:A:680:GLU:H	2.19	0.50
1:B:383:LEU:HD11	1:B:626:VAL:HG11	1.94	0.50
1:A:307:VAL:O	1:A:311:SER:OG	2.24	0.50
1:B:663:ASN:C	1:B:667:PRO:HG2	2.37	0.50
1:B:771:ASP:HA	1:B:810:ASN:O	2.12	0.50
1:C:331:PHE:O	1:C:335:MET:CB	2.50	0.50
1:C:651:GLN:O	1:C:655:ALA:N	2.42	0.50
1:A:8:ALA:HB1	1:B:850:TRP:HD1	1.76	0.50
1:A:132:MET:CE	1:A:579:MET:HE3	2.40	0.50
1:B:612:MET:HB3	1:B:693:ALA:HB1	1.93	0.50
1:C:748:VAL:HG12	1:C:749:SER:CB	2.42	0.50

Continued on next page...

Continued from previous page...

Atom-1	Atom-2	Interatomic distance (Å)	Clash overlap (Å)
1:A:200:PRO:HD2	1:A:258:ILE:HG21	1.94	0.49
1:A:832:MET:O	1:A:848:VAL:HG23	2.12	0.49
1:B:64:VAL:HG21	1:B:183:PRO:HA	1.94	0.49
1:B:228:ASP:HA	1:B:235:ARG:HH12	1.76	0.49
1:B:265:LYS:HG3	1:B:266:LYS:HG3	1.94	0.49
1:B:339:PRO:HG2	1:B:346:TRP:CD1	2.47	0.49
1:B:598:ARG:NH1	1:B:598:ARG:HB3	2.26	0.49
1:B:621:LEU:HB3	1:B:626:VAL:HG23	1.94	0.49
1:C:658:TYR:O	1:C:662:GLU:N	2.45	0.49
1:A:2:LYS:HG3	1:B:301:ASN:HB3	1.93	0.49
1:B:326:PHE:O	1:B:364:PHE:N	2.45	0.49
1:C:85:MET:HA	1:C:88:VAL:CG1	2.37	0.49
1:C:383:LEU:HD13	1:C:623:GLY:H	1.77	0.49
1:D:605:THR:O	1:D:606:SER:C	2.55	0.49
1:A:285:ASN:OD1	1:A:288:ARG:NH1	2.45	0.49
1:A:639:GLU:OE1	1:A:639:GLU:N	2.37	0.49
1:C:349:PHE:O	1:C:352:MET:HG2	2.12	0.49
1:D:445:TRP:CG	1:D:694:PRO:HB3	2.46	0.49
1:B:803:LYS:O	1:B:814:PHE:HA	2.11	0.49
1:C:375:GLN:O	1:C:405:HIS:NE2	2.44	0.49
1:D:85:MET:SD	1:D:85:MET:N	2.86	0.49
1:D:630:ARG:HG2	1:D:692:ILE:HD11	1.93	0.49
1:E:331:PHE:CZ	1:E:335:MET:HG3	2.48	0.49
1:A:741:ARG:HG2	1:A:775:LEU:HD21	1.94	0.49
1:C:414:HIS:CE1	1:C:416:PRO:HB2	2.46	0.49
1:C:508:ARG:HA	1:C:513:LYS:HE3	1.94	0.49
1:C:667:PRO:O	1:C:668:MET:C	2.56	0.49
1:B:605:THR:O	1:B:606:SER:C	2.55	0.49
1:C:64:VAL:O	1:C:67:LEU:HD12	2.13	0.49
1:C:327:ASP:OD1	1:C:363:ARG:HG2	2.13	0.49
1:C:738:VAL:C	1:C:742:TRP:HB2	2.38	0.49
1:C:741:ARG:NH2	1:C:775:LEU:HD22	2.27	0.49
1:A:142:SER:HB2	1:A:218:ILE:HG12	1.95	0.49
1:A:195:LEU:CD2	1:A:197:VAL:HG23	2.42	0.49
1:B:786:LEU:HG	1:B:795:GLN:HB2	1.94	0.49
1:C:782:GLU:HB3	1:C:801:PRO:HA	1.94	0.49
1:A:126:TYR:CG	1:A:579:MET:HE1	2.47	0.49
1:B:113:PHE:CE1	1:B:151:VAL:HB	2.47	0.49
1:B:165:SER:OG	1:B:169:GLN:HB3	2.13	0.49
1:B:581:LEU:O	1:B:584:ARG:HG2	2.12	0.49
1:B:623:GLY:C	1:B:625:TRP:N	2.65	0.49

Continued on next page...

Continued from previous page...

Atom-1	Atom-2	Interatomic distance (Å)	Clash overlap (Å)
1:C:95:PHE:CE1	1:C:99:MET:HG3	2.48	0.49
1:C:513:LYS:HA	1:C:513:LYS:HD3	1.53	0.49
1:C:745:ILE:HA	1:C:772:GLU:OE2	2.13	0.49
1:E:745:ILE:HG21	1:E:832:MET:HE1	1.95	0.49
1:A:535:PRO:O	1:A:670:TYR:OH	2.30	0.49
1:B:39:ALA:HB3	1:B:40:TRP:CE3	2.48	0.49
1:B:148:MET:HE3	1:B:148:MET:HA	1.95	0.49
1:B:448:ILE:HA	1:B:451:VAL:HG23	1.93	0.49
1:B:533:GLU:CD	1:B:533:GLU:H	2.20	0.49
1:C:448:ILE:HA	1:C:451:VAL:HG23	1.95	0.49
1:E:225:THR:OG1	1:E:230:ASN:ND2	2.46	0.49
1:A:27:LYS:NZ	1:A:30:ASP:HB3	2.27	0.49
1:A:402:GLU:OE1	1:A:402:GLU:N	2.39	0.49
1:A:731:ILE:HG23	1:A:838:LYS:CE	2.43	0.49
1:B:97:GLU:O	1:B:101:VAL:HG23	2.12	0.49
1:C:492:LEU:HA	1:C:495:ARG:HD3	1.95	0.49
1:C:525:LEU:HD21	1:C:571:ILE:HD11	1.94	0.49
1:C:737:SER:CA	1:C:741:ARG:HB3	2.41	0.49
1:E:187:VAL:HG22	1:E:212:GLN:HB2	1.95	0.49
1:E:353:GLY:HA3	1:E:364:PHE:CE1	2.48	0.49
1:A:274:TYR:CZ	1:A:288:ARG:HD2	2.49	0.48
1:A:289:LEU:HG	1:A:307:VAL:HG21	1.94	0.48
1:B:545:HIS:ND1	1:B:546:PRO:HD2	2.28	0.48
1:B:604:GLY:HA2	1:B:624:TRP:CD1	2.48	0.48
1:C:121:GLN:OE1	1:C:580:THR:HG22	2.13	0.48
1:C:606:SER:O	1:C:609:LLP:HB3	2.13	0.48
1:D:185:GLU:OE1	1:D:185:GLU:N	2.46	0.48
1:D:788:GLU:OE1	1:D:788:GLU:N	2.43	0.48
1:E:74:ARG:O	1:E:78:ILE:HG12	2.13	0.48
1:E:300:PHE:HZ	1:E:352:MET:HE1	1.78	0.48
1:A:42:TYR:HA	1:A:45:ARG:HE	1.78	0.48
1:A:126:TYR:CD1	1:A:579:MET:HE1	2.48	0.48
1:A:89:LYS:HD2	1:A:89:LYS:HA	1.73	0.48
1:A:110:VAL:HG22	1:A:148:MET:HB3	1.96	0.48
1:C:115:MET:HE2	1:C:280:HIS:CD2	2.47	0.48
1:D:81:ASP:OD1	1:D:82:LYS:N	2.47	0.48
1:E:291:ASP:O	1:E:295:GLU:HB2	2.14	0.48
1:E:756:MET:SD	1:E:756:MET:N	2.78	0.48
1:B:466:LYS:O	1:B:469:ALA:HB3	2.14	0.48
1:C:94:MET:HE2	1:C:94:MET:HA	1.96	0.48
1:D:34:HIS:HB3	1:D:185:GLU:OE2	2.13	0.48

Continued on next page...

Continued from previous page...

Atom-1	Atom-2	Interatomic distance (Å)	Clash overlap (Å)
1:D:418:TRP:CE2	1:D:609:LLP:HD3	2.48	0.48
1:E:741:ARG:HD2	1:E:775:LEU:HG	1.95	0.48
1:B:625:TRP:HA	1:B:629:TYR:H	1.79	0.48
1:B:821:ILE:HG23	1:B:822:ASN:H	1.79	0.48
1:C:442:GLU:OE2	1:C:442:GLU:N	2.39	0.48
1:E:285:ASN:ND2	1:E:374:CYS:SG	2.86	0.48
1:E:368:THR:HG23	1:E:395:ILE:CD1	2.44	0.48
1:A:114:CYS:HB2	1:A:277:ASN:HB3	1.96	0.48
1:A:292:TYR:O	1:A:297:GLY:N	2.47	0.48
1:B:178:ASN:O	1:B:182:LEU:HG	2.13	0.48
1:B:603:SER:O	1:B:624:TRP:HB3	2.14	0.48
1:C:715:ALA:O	1:C:719:LYS:HG2	2.14	0.48
1:D:518:LEU:HG	1:D:593:MET:HE1	1.95	0.48
1:D:730:GLU:OE2	1:D:838:LYS:NZ	2.46	0.48
1:E:302:GLN:NE2	1:E:729:LYS:HG2	2.28	0.48
1:A:104:ASN:H	1:A:145:ASN:HB3	1.78	0.48
1:A:605:THR:O	1:A:606:SER:C	2.56	0.48
1:B:235:ARG:HB3	1:B:236:PRO:HD3	1.95	0.48
1:B:679:LYS:H	1:B:679:LYS:HD2	1.79	0.48
1:B:821:ILE:HG12	1:B:822:ASN:N	2.28	0.48
1:C:750:LYS:HG3	1:C:752:ASP:O	2.13	0.48
1:E:109:SER:HB2	1:E:271:LYS:HD2	1.95	0.48
1:A:21:SER:CB	1:B:760:THR:HB	2.43	0.48
1:A:765:LYS:HZ1	1:A:817:GLU:HG2	1.79	0.48
1:B:118:GLY:O	1:B:135:GLY:HA3	2.13	0.48
1:B:123:VAL:HG23	1:B:123:VAL:O	2.13	0.48
1:B:298:LEU:HD11	1:B:302:GLN:CD	2.39	0.48
1:B:603:SER:HB3	1:B:623:GLY:CA	2.44	0.48
1:B:661:LEU:HD23	1:B:665:ILE:HD12	1.96	0.48
1:B:735:LYS:HG2	1:B:845:PHE:CD2	2.48	0.48
1:C:734:TRP:CD2	1:C:838:LYS:HE2	2.49	0.48
1:D:804:MET:HA	1:D:804:MET:HE2	1.96	0.48
1:A:299:ASN:OD1	1:A:299:ASN:N	2.47	0.48
1:A:584:ARG:HG2	2:A:901:AMP:O4'	2.14	0.48
1:B:166:MET:HE1	1:B:482:ASN:HA	1.96	0.48
1:B:242:TYR:O	1:B:249:ARG:HD3	2.14	0.48
1:B:442:GLU:OE1	1:B:695:HIS:NE2	2.47	0.48
1:B:466:LYS:HD2	2:B:901:AMP:N7	2.28	0.48
1:B:720:LEU:HA	1:B:727:LEU:HD22	1.96	0.48
1:B:755:LEU:HD21	1:B:828:THR:HG21	1.94	0.48
1:C:734:TRP:CE3	1:C:735:LYS:HB2	2.49	0.48

Continued on next page...

Continued from previous page...

Atom-1	Atom-2	Interatomic distance (Å)	Clash overlap (Å)
1:D:442:GLU:HG2	1:D:446:HIS:CE1	2.49	0.48
1:C:549:GLY:HA2	1:C:552:GLN:HG3	1.96	0.48
1:C:748:VAL:HG12	1:C:749:SER:HB3	1.96	0.48
1:B:56:TYR:O	1:B:61:ALA:N	2.45	0.47
1:B:188:TYR:HD1	1:B:194:PRO:HA	1.78	0.47
1:B:700:ARG:NH1	1:B:704:ASP:OD2	2.46	0.47
1:B:738:VAL:HG13	1:B:742:TRP:CE3	2.49	0.47
1:A:39:ALA:HB3	1:A:40:TRP:CE3	2.49	0.47
1:A:123:VAL:HG12	1:A:125:ILE:HG12	1.94	0.47
1:A:831:ARG:HB2	1:A:850:TRP:CZ3	2.49	0.47
1:B:308:ARG:HG2	1:B:716:ARG:HD3	1.94	0.47
1:B:782:GLU:HA	1:B:801:PRO:HA	1.96	0.47
1:C:16:THR:OG1	1:D:828:THR:OG1	2.27	0.47
1:C:40:TRP:CE3	1:C:139:LYS:HG2	2.49	0.47
1:C:738:VAL:HG13	1:C:742:TRP:HE3	1.76	0.47
1:D:140:GLU:OE2	1:D:144:SER:OG	2.28	0.47
1:D:764:ILE:HB	1:D:818:ILE:HB	1.94	0.47
1:A:33:ALA:HA	1:A:38:TRP:NE1	2.29	0.47
1:B:377:VAL:O	1:B:407:GLY:N	2.47	0.47
1:D:1:MET:SD	1:D:2:LYS:N	2.86	0.47
1:E:277:ASN:OD1	1:E:316:HIS:NE2	2.47	0.47
1:A:413:VAL:HG23	1:A:612:MET:HE2	1.96	0.47
1:B:300:PHE:CE2	1:B:342:LEU:HD13	2.49	0.47
1:B:313:TYR:OH	1:B:315:VAL:HB	2.14	0.47
1:B:313:TYR:N	1:B:376:GLU:O	2.44	0.47
1:B:336:GLY:HA2	1:B:346:TRP:NE1	2.28	0.47
1:B:469:ALA:O	1:B:470:TYR:C	2.57	0.47
1:B:560:GLU:O	1:B:564:ARG:HB2	2.14	0.47
1:B:667:PRO:O	1:B:668:MET:C	2.56	0.47
1:C:328:GLU:HG3	1:C:350:ILE:HD11	1.95	0.47
1:C:506:CYS:SG	1:C:594:ASN:ND2	2.87	0.47
1:D:328:GLU:OE2	1:D:354:ARG:NH2	2.48	0.47
1:E:415:PHE:O	1:E:419:THR:OG1	2.21	0.47
1:A:3:ILE:H	1:B:301:ASN:CB	2.27	0.47
1:A:266:LYS:HE3	1:A:266:LYS:HB2	1.69	0.47
1:A:831:ARG:HD2	1:A:848:VAL:HG21	1.96	0.47
1:B:142:SER:O	1:B:217:ARG:NH1	2.48	0.47
1:B:755:LEU:O	1:B:756:MET:C	2.57	0.47
1:B:766:VAL:HG11	1:B:802:PHE:CD2	2.49	0.47
1:C:755:LEU:HD23	1:C:756:MET:HG2	1.96	0.47
1:C:769:VAL:HG23	1:C:811:ASN:HB3	1.95	0.47

Continued on next page...

Continued from previous page...

Atom-1	Atom-2	Interatomic distance (Å)	Clash overlap (Å)
1:E:169:GLN:OE1	1:E:552:GLN:NE2	2.47	0.47
1:E:791:GLU:OE1	1:E:791:GLU:N	2.47	0.47
1:A:133:LEU:O	1:A:134:ALA:C	2.58	0.47
1:B:206:VAL:HG22	1:B:230:ASN:HD21	1.79	0.47
1:A:38:TRP:CD1	1:A:38:TRP:H	2.33	0.47
1:A:497:ASN:OD1	1:A:497:ASN:N	2.40	0.47
1:B:40:TRP:CD1	1:B:414:HIS:HE1	2.33	0.47
1:B:112:TYR:CZ	1:B:134:ALA:HA	2.49	0.47
1:B:166:MET:HE1	1:B:481:LYS:O	2.15	0.47
1:B:849:LYS:HG2	1:B:851:LEU:HD23	1.95	0.47
1:C:85:MET:CA	1:C:88:VAL:HG12	2.39	0.47
1:C:305:GLU:OE1	1:C:735:LYS:NZ	2.30	0.47
1:C:399:TYR:CE2	1:C:846:CYS:HA	2.50	0.47
1:C:739:ALA:HB3	1:C:740:GLU:OE1	2.14	0.47
1:C:786:LEU:HB2	1:C:827:LYS:HB2	1.97	0.47
1:C:839:LEU:HD13	1:C:845:PHE:HB2	1.97	0.47
1:D:11:PRO:HB3	1:E:850:TRP:NE1	2.30	0.47
1:E:227:ASN:O	1:E:235:ARG:NE	2.46	0.47
1:A:71:SER:O	1:A:75:LYS:HG3	2.15	0.47
1:A:258:ILE:HD13	1:A:287:GLN:HB2	1.97	0.47
1:B:383:LEU:HD21	1:B:626:VAL:HG21	1.97	0.47
1:C:208:ALA:HB1	1:C:223:LEU:HB3	1.97	0.47
1:C:313:TYR:HB2	1:C:374:CYS:HB3	1.97	0.47
1:C:745:ILE:C	1:C:746:HIS:CG	2.93	0.47
1:E:466:LYS:HB3	2:E:901:AMP:N7	2.30	0.47
1:A:52:ASP:HB3	1:A:55:LEU:HB3	1.97	0.47
1:B:13:TRP:HB3	1:C:827:LYS:HB3	1.97	0.47
1:B:36:MET:HE1	1:B:38:TRP:CH2	2.48	0.47
1:B:55:LEU:O	1:B:59:CYS:N	2.39	0.47
1:B:161:LYS:N	1:B:173:ASN:O	2.46	0.47
1:B:427:TYR:O	1:B:431:PHE:N	2.48	0.47
1:B:719:LYS:O	1:B:719:LYS:HD3	2.14	0.47
1:D:468:VAL:HG21	1:D:498:PRO:HB3	1.95	0.47
1:E:51:LEU:O	1:E:74:ARG:NH2	2.34	0.47
1:A:338:TYR:O	1:A:342:LEU:HB2	2.14	0.47
1:A:709:PHE:O	1:A:713:GLU:HB2	2.15	0.47
1:B:22:LEU:HG	1:B:30:ASP:HB2	1.97	0.47
1:B:293:ILE:HA	1:B:298:LEU:N	2.30	0.47
1:B:746:HIS:O	1:B:771:ASP:N	2.47	0.47
1:C:752:ASP:N	1:C:767:GLN:O	2.38	0.47
1:D:353:GLY:HA3	1:D:364:PHE:CE1	2.49	0.47

Continued on next page...

Continued from previous page...

Atom-1	Atom-2	Interatomic distance (Å)	Clash overlap (Å)
1:B:407:GLY:HA3	1:B:709:PHE:HZ	1.80	0.46
1:B:501:LEU:HD11	1:B:591:ILE:HD11	1.98	0.46
1:B:625:TRP:HA	1:B:625:TRP:CE3	2.51	0.46
1:B:671:ASN:ND2	1:B:680:GLU:OE2	2.47	0.46
1:C:516:HIS:O	1:C:520:THR:OG1	2.31	0.46
1:C:787:LYS:HB3	1:C:797:TYR:HB2	1.97	0.46
1:D:502:MET:HA	1:D:537:LEU:O	2.15	0.46
1:D:601:GLU:OE2	1:D:603:SER:N	2.48	0.46
1:A:36:MET:HA	1:A:36:MET:HE2	1.98	0.46
1:A:48:PHE:HD1	1:A:51:LEU:HD11	1.79	0.46
1:A:315:VAL:HG11	1:A:392:PHE:HZ	1.81	0.46
1:A:460:ARG:CB	1:A:461:MET:HE2	2.44	0.46
1:B:562:SER:O	1:B:568:LEU:HD12	2.15	0.46
1:C:643:TYR:HB3	1:C:649:GLN:HB2	1.97	0.46
1:E:445:TRP:CG	1:E:694:PRO:HB3	2.51	0.46
1:A:326:PHE:N	1:A:364:PHE:O	2.46	0.46
1:B:289:LEU:HA	1:B:303:ALA:HB1	1.95	0.46
1:B:750:LYS:CD	1:B:752:ASP:H	2.29	0.46
1:C:557:LYS:O	1:C:561:ILE:HG12	2.15	0.46
1:C:648:TYR:O	1:C:649:GLN:C	2.58	0.46
1:C:785:VAL:HB	1:C:798:ALA:O	2.15	0.46
1:D:352:MET:HG2	1:D:369:PHE:HD1	1.80	0.46
1:B:383:LEU:CD1	1:B:623:GLY:HA2	2.45	0.46
1:B:408:TYR:O	1:B:708:LYS:NZ	2.46	0.46
1:B:806:GLY:HA3	1:B:813:THR:HB	1.97	0.46
1:C:356:ASN:OD1	1:C:359:ASP:N	2.44	0.46
1:A:410:THR:HB	1:A:700:ARG:HH12	1.80	0.46
1:B:740:GLU:HG2	1:B:741:ARG:N	2.30	0.46
1:C:64:VAL:HG21	1:C:183:PRO:HA	1.97	0.46
1:C:74:ARG:HH21	1:C:78:ILE:HD11	1.80	0.46
1:C:592:TRP:CD1	1:C:615:VAL:HG11	2.41	0.46
1:E:289:LEU:HG	1:E:307:VAL:HG21	1.97	0.46
1:A:37:TRP:HZ2	1:A:94:MET:HE1	1.79	0.46
1:A:556:LYS:NZ	1:A:560:GLU:OE2	2.48	0.46
1:B:87:LYS:O	1:B:91:VAL:N	2.46	0.46
1:B:508:ARG:NH2	2:B:902:AMP:O4'	2.49	0.46
1:B:604:GLY:CA	1:B:608:GLU:HG2	2.45	0.46
1:B:782:GLU:O	1:B:831:ARG:HG2	2.16	0.46
1:B:785:VAL:O	1:B:797:TYR:N	2.36	0.46
1:C:261:ILE:HD11	1:C:284:CYS:HB2	1.98	0.46
1:D:228:ASP:HA	1:D:235:ARG:HH21	1.80	0.46

Continued on next page...

Continued from previous page...

Atom-1	Atom-2	Interatomic distance (Å)	Clash overlap (Å)
1:E:414:HIS:CD2	1:E:416:PRO:HD2	2.50	0.46
1:E:788:GLU:OE1	1:E:788:GLU:N	2.45	0.46
1:A:328:GLU:HG3	1:A:350:ILE:HG12	1.96	0.46
1:A:337:GLY:O	1:A:341:ARG:HG3	2.15	0.46
1:B:17:THR:HG22	1:C:825:SER:HB2	1.96	0.46
1:B:208:ALA:HB1	1:B:223:LEU:HB2	1.98	0.46
1:B:377:VAL:HG12	1:B:406:VAL:HG13	1.98	0.46
1:C:461:MET:HA	1:C:461:MET:HE2	1.98	0.46
1:C:809:GLY:N	1:C:812:PHE:HE1	2.14	0.46
1:C:834:PRO:HG2	1:C:839:LEU:HD12	1.97	0.46
1:D:358:ASP:OD1	1:D:358:ASP:N	2.47	0.46
1:A:139:LYS:HB3	1:A:414:HIS:CE1	2.50	0.46
1:A:457:TRP:CG	1:A:677:PHE:HB3	2.51	0.46
1:A:608:GLU:O	1:A:609:LLP:C	2.64	0.46
1:B:140:GLU:HA	1:B:143:ASP:HB2	1.98	0.46
1:C:782:GLU:CB	1:C:802:PHE:H	2.24	0.46
1:B:262:LEU:HD23	1:B:262:LEU:HA	1.79	0.46
1:B:309:ALA:HB2	1:B:717:PHE:CG	2.51	0.46
1:B:674:LYS:HA	1:B:674:LYS:HD3	1.74	0.46
1:C:227:ASN:OD1	1:C:230:ASN:ND2	2.48	0.46
1:C:506:CYS:HA	1:C:592:TRP:HZ3	1.80	0.46
1:C:734:TRP:CZ2	1:C:738:VAL:HG21	2.51	0.46
1:D:241:LEU:HA	1:D:241:LEU:HD23	1.63	0.46
1:E:250:LEU:HD12	1:E:326:PHE:CD1	2.51	0.46
1:E:591:ILE:HG12	1:E:616:VAL:HG13	1.98	0.46
1:B:517:LEU:HD11	1:B:654:ALA:N	2.30	0.46
1:B:559:PHE:O	1:B:563:GLN:HB3	2.16	0.46
1:B:604:GLY:HA2	1:B:624:TRP:CG	2.51	0.46
1:C:207:HIS:ND1	1:C:229:MET:SD	2.89	0.46
1:C:311:SER:HB2	1:C:374:CYS:SG	2.55	0.46
1:E:474:LYS:HD2	1:E:474:LYS:HA	1.69	0.46
1:A:749:SER:OG	1:A:769:VAL:HB	2.16	0.45
1:B:55:LEU:HG	1:B:59:CYS:SG	2.56	0.45
1:B:256:LEU:HD11	1:B:280:HIS:CD2	2.51	0.45
1:B:598:ARG:HH11	1:B:598:ARG:HB3	1.79	0.45
1:B:693:ALA:N	1:B:694:PRO:HD2	2.31	0.45
1:C:209:TYR:CE1	1:C:227:ASN:HB3	2.51	0.45
1:C:804:MET:SD	1:C:812:PHE:HB3	2.57	0.45
1:D:9:ASN:HD21	1:E:850:TRP:H	1.63	0.45
1:D:433:LYS:HA	1:D:433:LYS:HD3	1.72	0.45
1:D:492:LEU:O	1:D:495:ARG:HG2	2.16	0.45

Continued on next page...

Continued from previous page...

Atom-1	Atom-2	Interatomic distance (Å)	Clash overlap (Å)
1:A:94:MET:C	1:A:94:MET:HE2	2.40	0.45
1:A:156:ARG:HA	1:A:179:PHE:HZ	1.81	0.45
1:B:350:ILE:O	1:B:364:PHE:HD2	1.99	0.45
1:B:610:ALA:HA	1:B:613:ASN:HB2	1.98	0.45
1:C:197:VAL:O	1:C:207:HIS:HA	2.16	0.45
1:D:245:ASP:OD1	1:D:245:ASP:C	2.59	0.45
1:A:765:LYS:HD3	1:A:765:LYS:HA	1.68	0.45
1:B:298:LEU:HD12	1:B:298:LEU:HA	1.70	0.45
1:B:467:LEU:O	1:B:468:VAL:C	2.59	0.45
1:C:468:VAL:HG11	1:C:498:PRO:HB3	1.97	0.45
1:E:641:ARG:HD3	1:E:644:GLN:HA	1.99	0.45
1:A:231:SER:OG	1:A:234:ASP:OD2	2.34	0.45
1:A:805:VAL:HG21	1:A:815:GLU:HB3	1.99	0.45
1:B:128:GLY:O	1:B:132:MET:HG2	2.17	0.45
1:B:210:VAL:HG22	1:B:222:LEU:O	2.17	0.45
1:C:804:MET:HB3	1:C:835:LYS:CE	2.46	0.45
1:E:605:THR:HB	1:E:609:LLP:H5'1	1.98	0.45
1:B:486:PRO:HG2	1:C:645:ASN:CG	2.42	0.45
1:B:682:ILE:HG22	1:B:686:LYS:HD2	1.98	0.45
1:C:516:HIS:HA	1:C:519:PHE:CD2	2.51	0.45
1:C:705:TYR:HB3	1:C:710:TYR:CE2	2.51	0.45
1:C:742:TRP:HE1	1:C:832:MET:HE1	1.81	0.45
1:D:186:ARG:HH11	1:D:194:PRO:HB3	1.82	0.45
1:B:56:TYR:CD1	1:B:61:ALA:HA	2.52	0.45
1:B:467:LEU:HD22	1:B:588:GLY:HA3	1.99	0.45
1:C:290:CYS:HA	1:C:342:LEU:HD21	1.97	0.45
1:C:335:MET:HE2	1:C:335:MET:HA	1.99	0.45
1:D:716:ARG:CZ	1:D:840:PRO:HD3	2.47	0.45
1:E:137:TYR:N	1:E:698:MET:HE3	2.31	0.45
1:A:289:LEU:HD23	1:A:303:ALA:HB1	1.99	0.45
1:A:672:LYS:HB3	1:A:676:GLY:O	2.17	0.45
1:B:209:TYR:HB2	1:B:224:ASP:OD1	2.17	0.45
1:B:250:LEU:CD1	1:B:330:LEU:HG	2.46	0.45
1:C:121:GLN:HB2	1:C:579:MET:HB2	1.98	0.45
1:C:585:LEU:HB3	1:C:592:TRP:HZ2	1.81	0.45
1:C:613:ASN:HB2	1:C:615:VAL:HG23	1.99	0.45
1:C:720:LEU:HD23	1:C:727:LEU:HG	1.97	0.45
1:D:386:TRP:O	1:D:390:GLN:NE2	2.50	0.45
1:B:286:LEU:HD12	1:B:286:LEU:HA	1.79	0.45
1:B:629:TYR:CE1	1:B:631:GLU:HA	2.52	0.45
1:C:111:ALA:HB2	1:C:271:LYS:HB2	1.99	0.45

Continued on next page...

Continued from previous page...

Atom-1	Atom-2	Interatomic distance (Å)	Clash overlap (Å)
1:C:335:MET:HG3	1:C:346:TRP:HZ3	1.81	0.45
1:C:586:VAL:HA	1:C:592:TRP:NE1	2.31	0.45
1:C:644:GLN:H	1:C:644:GLN:CD	2.25	0.45
1:C:674:LYS:O	1:C:674:LYS:NZ	2.38	0.45
1:A:119:ILE:HD12	1:A:119:ILE:H	1.82	0.45
1:A:315:VAL:HG11	1:A:392:PHE:CZ	2.52	0.45
1:A:530:ASN:ND2	1:A:570:LYS:HE3	2.31	0.45
1:A:591:ILE:HD11	1:A:681:TRP:HH2	1.81	0.45
1:A:775:LEU:HD12	1:A:775:LEU:H	1.82	0.45
1:C:715:ALA:O	1:C:718:LYS:HG2	2.17	0.45
1:E:121:GLN:OE1	1:E:580:THR:OG1	2.25	0.45
1:A:387:VAL:O	1:A:388:SER:C	2.60	0.45
1:B:117:TYR:HA	1:B:134:ALA:HB3	1.99	0.45
1:B:339:PRO:HG2	1:B:346:TRP:HD1	1.82	0.45
1:B:593:MET:HG3	1:B:618:LEU:HG	1.98	0.45
1:B:605:THR:O	1:B:608:GLU:N	2.48	0.45
1:C:653:ASP:O	1:C:656:THR:HB	2.17	0.45
1:D:336:GLY:O	1:D:339:PRO:HD2	2.17	0.45
1:D:670:TYR:C	1:D:672:LYS:N	2.75	0.45
1:E:165:SER:HB3	1:E:171:ILE:HD11	1.99	0.45
1:B:136:ASP:HB2	1:B:698:MET:HE1	1.98	0.44
1:B:195:LEU:HD23	1:B:195:LEU:HA	1.74	0.44
1:B:325:TYR:HB2	1:B:363:ARG:HH11	1.82	0.44
1:B:745:ILE:HG23	1:B:772:GLU:CG	2.46	0.44
1:C:512:TYR:OH	1:C:513:LYS:NZ	2.51	0.44
1:D:2:LYS:NZ	1:E:344:ILE:HA	2.32	0.44
1:A:29:LEU:HD21	1:A:88:VAL:HG13	2.00	0.44
1:A:37:TRP:CZ2	1:A:94:MET:HE1	2.53	0.44
1:B:31:GLU:OE2	1:B:96:ARG:NH1	2.50	0.44
1:B:70:LEU:HD23	1:B:70:LEU:HA	1.78	0.44
1:B:620:VAL:HG22	1:B:637:LEU:HB2	2.00	0.44
1:B:685:VAL:O	1:B:689:ILE:HG13	2.17	0.44
1:B:739:ALA:C	1:B:741:ARG:H	2.25	0.44
1:B:750:LYS:HD3	1:B:752:ASP:CG	2.42	0.44
1:C:76:GLU:O	1:C:80:LYS:HG2	2.17	0.44
1:C:508:ARG:CA	1:C:513:LYS:HG2	2.48	0.44
1:C:518:LEU:HB3	1:C:525:LEU:HD13	1.98	0.44
1:D:840:PRO:HD2	1:D:844:ASP:OD2	2.18	0.44
1:E:369:PHE:O	1:E:373:THR:HG23	2.17	0.44
1:B:76:GLU:O	1:B:80:LYS:HG2	2.18	0.44
1:B:92:TYR:HA	1:B:95:PHE:HB3	1.98	0.44

Continued on next page...

Continued from previous page...

Atom-1	Atom-2	Interatomic distance (Å)	Clash overlap (Å)
1:B:501:LEU:C	1:B:502:MET:HE2	2.43	0.44
1:B:625:TRP:CD1	1:B:636:ALA:HB2	2.52	0.44
1:C:279:GLY:O	1:C:366:LEU:HD21	2.16	0.44
1:C:781:LEU:HD13	1:C:835:LYS:HD3	2.00	0.44
1:E:85:MET:HA	1:E:85:MET:HE2	2.00	0.44
1:A:474:LYS:HA	1:A:474:LYS:HD3	1.65	0.44
1:B:109:SER:O	1:B:273:ILE:N	2.45	0.44
1:B:225:THR:OG1	1:B:238:THR:HG23	2.17	0.44
1:B:252:GLN:O	1:B:255:LEU:HG	2.17	0.44
1:C:72:TYR:HA	1:C:75:LYS:HB2	1.99	0.44
1:C:643:TYR:CE2	1:C:648:TYR:HD2	2.35	0.44
1:E:514:ARG:HB2	1:E:595:THR:O	2.17	0.44
1:A:514:ARG:HB3	1:A:517:LEU:HG	2.00	0.44
1:B:36:MET:HE2	1:B:39:ALA:HB2	1.99	0.44
1:B:467:LEU:HD11	1:B:585:LEU:HD23	1.99	0.44
1:C:110:VAL:O	1:C:148:MET:HG3	2.18	0.44
1:C:113:PHE:N	1:C:275:HIS:O	2.49	0.44
1:C:380:VAL:HG22	1:C:384:HIS:ND1	2.32	0.44
1:D:619:SER:HB3	1:D:625:TRP:CD1	2.52	0.44
1:D:751:ASP:HB3	1:D:767:GLN:HB3	2.00	0.44
1:A:36:MET:CG	1:A:213:MET:HE1	2.46	0.44
1:A:165:SER:HB3	1:A:171:ILE:HD11	1.99	0.44
1:B:317:THR:OG1	2:B:902:AMP:O2'	2.34	0.44
1:B:783:LEU:HD22	1:B:818:ILE:HD13	2.00	0.44
1:C:70:LEU:HA	1:C:70:LEU:HD23	1.75	0.44
1:C:169:GLN:NE2	1:C:552:GLN:OE1	2.50	0.44
1:C:599:PRO:HD3	1:C:641:ARG:HG2	1.98	0.44
1:E:15:GLU:N	1:E:15:GLU:OE2	2.50	0.44
1:E:74:ARG:NH2	1:E:78:ILE:HD11	2.33	0.44
1:A:3:ILE:HG12	1:B:301:ASN:HD22	1.83	0.44
1:A:213:MET:HG3	1:A:220:LEU:HB3	1.99	0.44
1:A:502:MET:SD	1:A:502:MET:N	2.91	0.44
1:B:9:ASN:CG	1:B:9:ASN:O	2.61	0.44
1:B:36:MET:CE	1:B:39:ALA:HB2	2.47	0.44
1:C:228:ASP:HA	1:C:235:ARG:HH11	1.81	0.44
1:C:333:LYS:HB2	1:C:333:LYS:HE2	1.80	0.44
1:C:608:GLU:O	1:C:611:GLU:HB2	2.18	0.44
1:E:77:ALA:O	1:E:80:LYS:HG3	2.18	0.44
1:E:737:SER:O	1:E:740:GLU:HG3	2.18	0.44
1:A:38:TRP:CD1	1:A:48:PHE:HE2	2.36	0.44
1:A:501:LEU:HD22	1:A:536:VAL:HG13	2.00	0.44

Continued on next page...

Continued from previous page...

Atom-1	Atom-2	Interatomic distance (Å)	Clash overlap (Å)
1:A:590:ASP:C	1:A:615:VAL:HG13	2.43	0.44
1:B:706:TYR:HA	1:B:710:TYR:CD2	2.53	0.44
1:C:178:ASN:HB2	1:C:181:SER:OG	2.17	0.44
1:C:528:ILE:HD13	1:C:661:LEU:HD23	2.00	0.44
1:E:716:ARG:NH2	1:E:840:PRO:HD3	2.33	0.44
1:E:750:LYS:HG3	1:E:768:TYR:CZ	2.53	0.44
1:A:227:ASN:HB2	1:A:229:MET:SD	2.57	0.44
1:B:410:THR:O	1:B:700:ARG:NH2	2.26	0.44
1:B:485:ASP:OD2	1:B:488:ARG:HG3	2.18	0.44
1:B:742:TRP:NE1	1:B:832:MET:HE1	2.33	0.44
1:A:723:ASN:O	1:A:726:ALA:N	2.51	0.43
1:B:261:ILE:HA	1:B:264:LEU:HB2	2.00	0.43
1:B:601:GLU:C	1:B:603:SER:H	2.25	0.43
1:B:750:LYS:HA	1:B:768:TYR:HA	2.00	0.43
1:B:785:VAL:CG1	1:B:826:PHE:HB3	2.48	0.43
1:E:366:LEU:HD23	1:E:366:LEU:HA	1.90	0.43
1:E:680:GLU:O	1:E:684:VAL:HG23	2.17	0.43
1:A:112:TYR:N	1:A:149:CYS:O	2.48	0.43
1:B:35:ASN:HB2	1:B:95:PHE:CE1	2.53	0.43
1:B:179:PHE:HB3	1:B:211:TRP:CZ2	2.53	0.43
1:B:623:GLY:O	1:B:626:VAL:N	2.51	0.43
1:B:719:LYS:HD3	1:B:719:LYS:C	2.43	0.43
1:C:254:ILE:HD13	1:C:283:LEU:HD11	1.99	0.43
1:C:634:GLY:HA2	1:C:660:LEU:HD11	2.00	0.43
1:C:748:VAL:HG12	1:C:749:SER:N	2.32	0.43
1:C:755:LEU:HD23	1:C:756:MET:HE3	2.00	0.43
1:D:198:ASP:OD1	1:D:207:HIS:ND1	2.51	0.43
1:D:386:TRP:CG	1:D:390:GLN:HE22	2.36	0.43
1:B:250:LEU:O	1:B:254:ILE:HG12	2.18	0.43
1:B:284:CYS:SG	1:B:285:ASN:N	2.91	0.43
1:C:404:ASN:HB3	1:C:406:VAL:HG23	2.00	0.43
1:C:413:VAL:C	1:C:698:MET:HG2	2.43	0.43
1:A:727:LEU:O	1:A:731:ILE:HG13	2.19	0.43
1:B:376:GLU:OE1	1:B:709:PHE:HD1	2.02	0.43
1:C:53:PRO:O	1:C:57:GLU:HG2	2.18	0.43
1:C:320:PRO:HG3	1:C:391:MET:HB2	2.01	0.43
1:B:2:LYS:HE3	1:C:300:PHE:HB2	2.00	0.43
1:B:151:VAL:HG21	1:B:263:THR:HG21	1.99	0.43
1:B:180:ASN:HA	1:B:211:TRP:HH2	1.83	0.43
1:C:1:MET:N	1:D:301:ASN:OD1	2.52	0.43
1:C:147:ASP:OD1	1:C:271:LYS:NZ	2.44	0.43

Continued on next page...

Continued from previous page...

Atom-1	Atom-2	Interatomic distance (Å)	Clash overlap (Å)
1:C:745:ILE:CG2	1:C:778:ALA:HB1	2.48	0.43
1:D:335:MET:HE2	1:D:349:PHE:CZ	2.54	0.43
1:E:325:TYR:HB3	1:E:363:ARG:HE	1.83	0.43
1:E:331:PHE:CE1	1:E:335:MET:HG3	2.54	0.43
1:A:299:ASN:O	1:A:300:PHE:C	2.62	0.43
1:B:383:LEU:HD13	1:B:622:ASP:O	2.19	0.43
1:B:467:LEU:CD2	1:B:588:GLY:HA3	2.47	0.43
1:D:577:TYR:CE2	1:D:609:LLP:H2'2	2.54	0.43
1:E:245:ASP:OD1	1:E:245:ASP:N	2.51	0.43
1:B:351:GLY:HA2	1:B:354:ARG:CZ	2.48	0.43
1:B:782:GLU:HG2	1:B:799:VAL:HG13	2.00	0.43
1:C:441:ASN:HB2	1:C:444:ILE:HG13	2.01	0.43
1:C:621:LEU:HD13	1:C:636:ALA:HB1	2.00	0.43
1:D:24:LYS:HA	1:D:27:LYS:HZ3	1.84	0.43
1:D:781:LEU:HB2	1:D:802:PHE:HB2	1.99	0.43
1:A:36:MET:SD	1:A:39:ALA:HB2	2.59	0.43
1:A:647:GLY:O	1:A:651:GLN:HG3	2.19	0.43
1:B:96:ARG:NH1	1:B:99:MET:HG2	2.34	0.43
1:B:326:PHE:HB2	1:B:364:PHE:O	2.19	0.43
1:B:513:LYS:HA	1:B:596:PRO:HA	2.00	0.43
1:C:258:ILE:O	1:C:262:LEU:HG	2.18	0.43
1:C:657:ILE:O	1:C:661:LEU:HB2	2.19	0.43
1:C:748:VAL:HG23	1:C:771:ASP:CB	2.46	0.43
1:D:474:LYS:HA	1:D:474:LYS:HD2	1.67	0.43
1:A:118:GLY:HA2	1:A:126:TYR:HB3	2.01	0.43
1:A:457:TRP:CE2	1:A:461:MET:HE3	2.53	0.43
1:B:601:GLU:HG3	1:B:603:SER:N	2.28	0.43
1:B:768:TYR:CE2	1:B:830:VAL:HG21	2.53	0.43
1:C:754:MET:O	1:C:754:MET:SD	2.77	0.43
1:D:134:ALA:O	1:D:135:GLY:C	2.62	0.43
1:E:132:MET:HE1	1:E:579:MET:SD	2.59	0.43
1:A:38:TRP:HA	1:A:41:ASN:HB2	2.01	0.43
1:B:231:SER:N	1:B:234:ASP:HB2	2.33	0.43
1:B:383:LEU:CD1	1:B:623:GLY:CA	2.97	0.43
1:B:560:GLU:HB2	1:B:564:ARG:HH21	1.84	0.43
1:B:625:TRP:O	1:B:628:GLY:N	2.52	0.43
1:C:199:VAL:N	1:C:206:VAL:O	2.52	0.43
1:C:306:LEU:HD23	1:C:306:LEU:HA	1.68	0.43
1:C:414:HIS:HE1	1:C:416:PRO:HB2	1.82	0.43
1:D:415:PHE:O	1:D:419:THR:OG1	2.24	0.43
1:E:74:ARG:HD2	1:E:74:ARG:HA	1.87	0.43

Continued on next page...

Continued from previous page...

Atom-1	Atom-2	Interatomic distance (Å)	Clash overlap (Å)
1:A:507:ARG:HG2	1:A:513:LYS:HZ3	1.82	0.42
1:A:708:LYS:O	1:A:712:LYS:HD3	2.19	0.42
1:C:208:ALA:HA	1:C:224:ASP:O	2.19	0.42
1:C:804:MET:HB3	1:C:835:LYS:HE2	2.01	0.42
1:D:99:MET:HE3	1:D:99:MET:HB3	1.77	0.42
1:D:314:THR:HG1	1:D:378:ASN:HD21	1.61	0.42
1:D:469:ALA:O	1:D:470:TYR:C	2.61	0.42
1:D:754:MET:HG2	1:D:765:LYS:H	1.84	0.42
1:E:335:MET:HE3	1:E:335:MET:HA	2.01	0.42
1:B:117:TYR:O	1:B:125:ILE:HG13	2.19	0.42
1:B:276:CYS:SG	1:B:312:LEU:O	2.69	0.42
1:C:638:PRO:HD3	1:C:656:THR:HG21	2.00	0.42
1:C:641:ARG:HE	1:C:646:GLN:CD	2.26	0.42
1:C:734:TRP:CE2	1:C:738:VAL:HG21	2.53	0.42
1:C:795:GLN:OE1	1:C:795:GLN:N	2.44	0.42
1:D:620:VAL:HA	1:D:637:LEU:HB2	2.01	0.42
1:E:501:LEU:HB2	1:E:669:TYR:CE2	2.54	0.42
1:A:18:ILE:HG13	1:B:826:PHE:HD2	1.84	0.42
1:A:73:ASP:C	1:A:75:LYS:N	2.70	0.42
1:A:420:ALA:O	1:A:424:ARG:N	2.46	0.42
1:A:803:LYS:HB3	1:A:803:LYS:HE2	1.78	0.42
1:B:96:ARG:HD2	1:B:96:ARG:HA	1.55	0.42
1:E:517:LEU:HD21	1:E:653:ASP:HB3	2.00	0.42
1:A:274:TYR:CE2	1:A:288:ARG:HD2	2.54	0.42
1:B:17:THR:O	1:B:19:LYS:HE3	2.19	0.42
1:B:212:GLN:OE1	1:B:214:ASN:ND2	2.49	0.42
1:B:821:ILE:HG23	1:B:822:ASN:N	2.34	0.42
1:C:264:LEU:HD13	1:C:274:TYR:HE2	1.84	0.42
1:D:70:LEU:HD12	1:D:70:LEU:HA	1.90	0.42
1:E:465:LYS:HA	1:E:468:VAL:HG12	2.00	0.42
1:A:825:SER:HA	1:E:17:THR:HA	2.00	0.42
1:A:849:LYS:HE2	1:A:849:LYS:HB2	1.83	0.42
1:B:354:ARG:CB	1:B:357:ALA:HA	2.50	0.42
1:B:564:ARG:CG	1:B:565:PRO:HD2	2.50	0.42
1:C:335:MET:SD	1:C:338:TYR:HD1	2.42	0.42
1:C:394:ASN:N	1:C:394:ASN:OD1	2.51	0.42
1:C:741:ARG:CZ	1:C:775:LEU:HD13	2.49	0.42
1:D:368:THR:HG23	1:D:395:ILE:HD12	2.02	0.42
1:E:802:PHE:HA	1:E:816:ALA:HB2	2.01	0.42
1:A:141:ALA:O	1:A:145:ASN:N	2.52	0.42
1:B:486:PRO:HB3	1:C:648:TYR:HB2	2.00	0.42

Continued on next page...

Continued from previous page...

Atom-1	Atom-2	Interatomic distance (Å)	Clash overlap (Å)
1:B:751:ASP:HB2	1:B:767:GLN:OE1	2.20	0.42
1:C:658:TYR:HB3	1:C:662:GLU:OE2	2.20	0.42
1:C:662:GLU:H	1:C:662:GLU:HG3	1.67	0.42
1:C:787:LYS:HD3	1:C:789:GLN:NE2	2.35	0.42
1:D:132:MET:O	1:D:133:LEU:C	2.63	0.42
1:D:384:HIS:CD2	1:D:602:ALA:HA	2.55	0.42
1:A:629:TYR:O	1:A:630:ARG:NH1	2.44	0.42
1:A:693:ALA:N	1:A:694:PRO:HD2	2.34	0.42
1:B:89:LYS:HD2	1:B:89:LYS:HA	1.84	0.42
1:B:563:GLN:HA	1:B:568:LEU:CD1	2.48	0.42
1:C:136:ASP:HB3	1:C:414:HIS:HB2	2.01	0.42
1:C:286:LEU:HA	1:C:289:LEU:HD23	2.01	0.42
1:C:299:ASN:OD1	1:C:300:PHE:N	2.52	0.42
1:C:388:SER:O	1:C:392:PHE:N	2.41	0.42
1:C:624:TRP:CD1	1:C:625:TRP:HE3	2.37	0.42
1:D:138:LEU:HD23	1:D:138:LEU:HA	1.86	0.42
1:B:29:LEU:HA	1:B:32:ILE:HB	2.02	0.42
1:B:349:PHE:O	1:B:364:PHE:HE2	2.01	0.42
1:B:596:PRO:CG	1:B:601:GLU:HB2	2.49	0.42
1:B:658:TYR:O	1:B:659:ASN:C	2.63	0.42
1:C:201:TYR:HD1	1:C:202:THR:H	1.68	0.42
1:D:191:ASN:OD1	1:D:191:ASN:N	2.52	0.42
1:E:259:GLY:O	1:E:263:THR:OG1	2.27	0.42
1:A:249:ARG:HA	1:A:249:ARG:HD2	1.92	0.42
1:B:12:GLN:HG3	1:C:851:LEU:HD22	2.02	0.42
1:B:219:LYS:HZ2	1:B:219:LYS:HG2	1.69	0.42
1:B:293:ILE:HA	1:B:298:LEU:H	1.84	0.42
1:B:501:LEU:HD11	1:B:591:ILE:CD1	2.49	0.42
1:C:625:TRP:HE1	1:C:636:ALA:HB2	1.85	0.42
1:C:716:ARG:O	1:C:719:LYS:HG3	2.20	0.42
1:C:769:VAL:O	1:C:770:ILE:HD13	2.19	0.42
1:A:107:ARG:HB3	1:A:706:TYR:CE1	2.55	0.42
1:A:201:TYR:CG	1:A:202:THR:N	2.88	0.42
1:A:279:GLY:O	1:A:366:LEU:HD22	2.19	0.42
1:B:489:VAL:HA	1:B:492:LEU:HG	2.02	0.42
1:B:747:VAL:HA	1:B:770:ILE:HA	2.02	0.42
1:B:821:ILE:HG12	1:B:822:ASN:H	1.84	0.42
1:C:625:TRP:CZ2	1:C:635:TRP:HB2	2.54	0.42
1:D:11:PRO:HB3	1:E:850:TRP:CD1	2.55	0.42
1:E:330:LEU:HA	1:E:333:LYS:HZ2	1.84	0.42
1:E:356:ASN:OD1	1:E:356:ASN:N	2.53	0.42

Continued on next page...

Continued from previous page...

Atom-1	Atom-2	Interatomic distance (Å)	Clash overlap (Å)
1:A:4:LYS:HB3	1:B:847:TYR:OH	2.20	0.41
1:A:51:LEU:HD12	1:A:66:LEU:HD13	2.02	0.41
1:A:114:CYS:HB3	1:A:117:TYR:CZ	2.55	0.41
1:A:187:VAL:HG12	1:A:195:LEU:HB2	2.02	0.41
1:A:583:ARG:O	1:A:587:SER:OG	2.36	0.41
1:A:681:TRP:O	1:A:685:VAL:HG13	2.20	0.41
1:B:26:LEU:HD23	1:B:85:MET:HE1	2.01	0.41
1:B:51:LEU:HD23	1:B:51:LEU:HA	1.80	0.41
1:B:161:LYS:HD3	1:B:161:LYS:HA	1.81	0.41
1:B:534:HIS:HB3	1:B:670:TYR:CE2	2.55	0.41
1:B:745:ILE:CD1	1:B:772:GLU:HB3	2.50	0.41
1:C:755:LEU:CD2	1:C:756:MET:HE3	2.50	0.41
1:E:55:LEU:HA	1:E:58:LYS:HB2	2.02	0.41
1:E:115:MET:HG3	1:E:155:TYR:OH	2.20	0.41
1:E:258:ILE:CD1	1:E:287:GLN:HB2	2.50	0.41
1:E:490:VAL:O	1:E:494:GLU:HG2	2.20	0.41
1:E:607:GLY:HA3	1:E:624:TRP:HZ2	1.83	0.41
1:A:294:GLU:OE2	1:A:341:ARG:HB3	2.19	0.41
1:B:340:GLN:OE1	1:B:340:GLN:N	2.34	0.41
1:B:441:ASN:O	1:B:445:TRP:HD1	2.03	0.41
1:A:9:ASN:HD22	1:A:9:ASN:HA	1.46	0.41
1:A:308:ARG:NH1	1:A:372:ASN:O	2.53	0.41
1:B:170:GLN:HB3	1:B:552:GLN:CD	2.44	0.41
1:B:729:LYS:O	1:B:733:LEU:N	2.33	0.41
1:B:407:GLY:HA3	1:B:709:PHE:CZ	2.56	0.41
1:B:442:GLU:HA	1:B:445:TRP:HB2	2.02	0.41
1:B:445:TRP:O	1:B:448:ILE:HD12	2.20	0.41
1:B:630:ARG:HA	1:B:630:ARG:HD3	1.27	0.41
1:B:731:ILE:O	1:B:735:LYS:HG3	2.20	0.41
1:B:852:ASN:OD1	1:B:852:ASN:N	2.52	0.41
1:C:313:TYR:HB2	1:C:374:CYS:SG	2.61	0.41
1:C:620:VAL:HB	1:C:622:ASP:HB2	2.02	0.41
1:D:121:GLN:NE2	1:D:578:ASP:OD2	2.53	0.41
1:E:37:TRP:NE1	1:E:41:ASN:OD1	2.54	0.41
1:A:522:LEU:HD13	1:A:564:ARG:NH2	2.36	0.41
1:A:736:GLU:HB3	1:A:740:GLU:OE1	2.20	0.41
1:B:213:MET:HA	1:B:213:MET:HE2	2.02	0.41
1:B:298:LEU:HD11	1:B:302:GLN:NE2	2.35	0.41
1:C:506:CYS:HA	1:C:592:TRP:CZ3	2.54	0.41
1:C:720:LEU:HA	1:C:727:LEU:HB3	2.03	0.41
1:C:772:GLU:CD	1:C:778:ALA:HB3	2.44	0.41

Continued on next page...

Continued from previous page...

Atom-1	Atom-2	Interatomic distance (Å)	Clash overlap (Å)
1:D:76:GLU:HA	1:D:79:VAL:HG22	2.02	0.41
1:D:331:PHE:CZ	1:D:335:MET:HG3	2.55	0.41
1:D:723:ASN:OD1	1:D:723:ASN:N	2.54	0.41
1:B:3:ILE:HD12	1:B:3:ILE:HA	1.85	0.41
1:B:36:MET:HE1	1:B:38:TRP:CZ3	2.56	0.41
1:B:453:ASP:HB3	1:B:682:ILE:HG21	2.01	0.41
1:B:745:ILE:HD12	1:B:772:GLU:HG2	2.02	0.41
1:C:369:PHE:HA	1:C:372:ASN:HD22	1.84	0.41
1:C:465:LYS:HB2	1:C:465:LYS:HE3	1.92	0.41
1:C:801:PRO:O	1:C:818:ILE:HD11	2.20	0.41
1:E:412:GLY:N	1:E:701:GLN:OE1	2.54	0.41
1:A:334:TYR:HB3	1:A:335:MET:HE2	2.03	0.41
1:B:413:VAL:N	1:B:698:MET:HB2	2.35	0.41
1:B:432:ASP:OD1	1:B:433:LYS:N	2.54	0.41
1:B:460:ARG:HD2	1:B:460:ARG:HA	1.90	0.41
1:B:620:VAL:HB	1:B:622:ASP:CG	2.45	0.41
1:C:384:HIS:HA	1:C:387:VAL:HB	2.03	0.41
1:D:247:GLU:O	1:D:251:LYS:HG3	2.20	0.41
1:D:503:ILE:HG12	1:D:591:ILE:HB	2.01	0.41
1:E:73:ASP:OD1	1:E:73:ASP:N	2.51	0.41
1:E:380:VAL:HG22	1:E:384:HIS:ND1	2.36	0.41
1:E:464:LYS:HG2	1:E:502:MET:HE1	2.02	0.41
1:A:524:ARG:NH2	1:A:662:GLU:OE1	2.50	0.41
1:C:16:THR:HG21	1:D:755:LEU:HD21	2.02	0.41
1:C:51:LEU:HD23	1:C:51:LEU:HA	1.90	0.41
1:C:196:VAL:HB	1:C:207:HIS:HB3	2.03	0.41
1:C:492:LEU:HA	1:C:492:LEU:HD23	1.91	0.41
1:C:507:ARG:HH21	1:C:603:SER:HA	1.86	0.41
1:D:227:ASN:O	1:D:235:ARG:NH2	2.51	0.41
1:D:415:PHE:HB3	1:D:416:PRO:HD3	2.02	0.41
1:E:545:HIS:CD2	1:E:547:ALA:HB3	2.56	0.41
1:E:591:ILE:HD11	1:E:681:TRP:HH2	1.86	0.41
1:A:121:GLN:NE2	1:A:578:ASP:OD2	2.53	0.41
1:A:771:ASP:HA	1:A:810:ASN:O	2.20	0.41
1:B:16:THR:N	1:C:826:PHE:O	2.49	0.41
1:B:273:ILE:HA	1:B:310:SER:OG	2.21	0.41
1:B:355:GLU:HB2	1:B:362:GLU:CD	2.46	0.41
1:B:514:ARG:HD2	1:B:650:ASP:OD1	2.21	0.41
1:B:560:GLU:CB	1:B:564:ARG:HH21	2.33	0.41
1:B:614:GLY:HA2	1:B:689:ILE:HD11	2.02	0.41
1:B:741:ARG:HE	1:B:775:LEU:HD21	1.86	0.41

Continued on next page...

Continued from previous page...

Atom-1	Atom-2	Interatomic distance (Å)	Clash overlap (Å)
1:B:758:ALA:HB1	1:B:820:PRO:HG2	2.03	0.41
1:B:763:LYS:HE3	1:B:763:LYS:HB3	1.83	0.41
1:C:413:VAL:O	1:C:698:MET:HG2	2.20	0.41
1:C:512:TYR:O	1:C:514:ARG:NE	2.40	0.41
1:D:131:GLY:O	1:D:132:MET:C	2.64	0.41
1:D:594:ASN:HB3	1:D:619:SER:OG	2.20	0.41
1:D:688:SER:O	1:D:692:ILE:HB	2.20	0.41
1:E:23:PRO:HD3	1:E:75:LYS:NZ	2.36	0.41
1:E:571:ILE:O	1:E:572:ILE:HD13	2.21	0.41
1:A:567:PHE:HB3	1:A:571:ILE:HG22	2.02	0.41
1:B:289:LEU:HA	1:B:303:ALA:CB	2.50	0.41
1:B:584:ARG:HH11	1:B:584:ARG:HB3	1.85	0.41
1:B:742:TRP:HA	1:B:742:TRP:CE3	2.55	0.41
1:D:22:LEU:HD12	1:D:23:PRO:HD2	2.03	0.41
1:E:430:TYR:CE2	1:E:451:VAL:HG13	2.56	0.41
1:A:467:LEU:HB2	2:A:901:AMP:HN61	1.86	0.40
1:A:754:MET:HE3	1:A:754:MET:HB3	1.60	0.40
1:B:55:LEU:HA	1:B:58:LYS:HZ3	1.86	0.40
1:B:352:MET:HB3	1:B:364:PHE:CE2	2.56	0.40
1:B:470:TYR:CZ	1:B:474:LYS:HG3	2.56	0.40
1:C:648:TYR:O	1:C:651:GLN:N	2.55	0.40
1:C:659:ASN:C	1:C:661:LEU:N	2.78	0.40
1:D:9:ASN:ND2	1:E:850:TRP:H	2.19	0.40
1:D:166:MET:HA	1:D:166:MET:HE3	2.03	0.40
1:D:785:VAL:HG13	1:D:826:PHE:HB3	2.02	0.40
1:B:759:GLU:HB3	1:B:760:THR:H	1.65	0.40
1:C:72:TYR:O	1:C:75:LYS:HB2	2.21	0.40
1:C:642:THR:H	1:C:649:GLN:NE2	2.19	0.40
1:C:654:ALA:O	1:C:658:TYR:N	2.38	0.40
1:D:465:LYS:O	1:D:466:LYS:C	2.64	0.40
1:D:512:TYR:O	1:D:597:THR:OG1	2.34	0.40
1:E:18:ILE:H	1:E:18:ILE:HG12	1.69	0.40
1:E:310:SER:HB3	1:E:717:PHE:CD1	2.56	0.40
1:E:399:TYR:OH	1:E:842:ARG:HG2	2.21	0.40
1:A:156:ARG:HA	1:A:179:PHE:CZ	2.56	0.40
1:A:827:LYS:HA	1:E:14:LYS:O	2.21	0.40
1:B:199:VAL:HB	1:B:206:VAL:HB	2.02	0.40
1:B:339:PRO:HG3	1:B:349:PHE:HB3	2.04	0.40
1:B:468:VAL:HG21	1:B:498:PRO:HB3	2.02	0.40
1:B:554:LEU:HD12	1:B:554:LEU:HA	1.69	0.40
1:B:594:ASN:HB3	1:B:619:SER:OG	2.21	0.40

Continued on next page...

Continued from previous page...

Atom-1	Atom-2	Interatomic distance (Å)	Clash overlap (Å)
1:B:803:LYS:HE3	1:B:803:LYS:HB2	1.91	0.40
1:C:302:GLN:HE22	1:C:732:ALA:HB2	1.86	0.40
1:C:355:GLU:N	1:C:362:GLU:OE2	2.54	0.40
1:C:629:TYR:O	1:C:629:TYR:CG	2.73	0.40
1:C:646:GLN:HA	1:C:646:GLN:NE2	2.35	0.40
1:C:756:MET:HB3	1:C:762:GLN:CD	2.47	0.40
1:A:47:LEU:HA	1:A:87:LYS:HZ3	1.86	0.40
1:B:415:PHE:O	1:B:419:THR:OG1	2.32	0.40
1:C:646:GLN:NE2	1:C:650:ASP:OD1	2.54	0.40
1:A:11:PRO:HB2	1:A:13:TRP:NE1	2.37	0.40
1:A:49:LYS:HA	1:A:56:TYR:CD1	2.56	0.40
1:A:163:SER:O	1:A:171:ILE:N	2.43	0.40
1:A:211:TRP:O	1:A:221:TYR:HA	2.21	0.40
1:B:154:LEU:HD12	1:B:154:LEU:HA	1.96	0.40
1:B:227:ASN:HB2	1:B:230:ASN:OD1	2.20	0.40
1:B:295:GLU:N	1:B:295:GLU:CD	2.80	0.40
1:B:352:MET:HE2	1:B:352:MET:HA	2.02	0.40
1:B:383:LEU:HD13	1:B:623:GLY:HA3	2.03	0.40
1:B:571:ILE:HD12	1:B:572:ILE:N	2.36	0.40
1:B:604:GLY:CA	1:B:624:TRP:HB3	2.52	0.40
1:B:764:ILE:HB	1:B:818:ILE:HB	2.03	0.40
1:C:54:ASP:O	1:C:58:LYS:HD3	2.22	0.40
1:C:82:LYS:HD2	1:C:83:GLU:N	2.36	0.40
1:C:215:VAL:N	1:C:218:ILE:O	2.53	0.40
1:C:300:PHE:O	1:C:304:LEU:CB	2.70	0.40
1:C:344:ILE:HG22	1:C:348:GLU:HG2	2.02	0.40
1:C:507:ARG:NE	1:C:604:GLY:H	2.19	0.40
1:C:627:GLU:HG2	1:C:628:GLY:N	2.37	0.40
1:C:764:ILE:HG13	1:C:818:ILE:O	2.22	0.40
1:C:766:VAL:O	1:C:814:PHE:HB2	2.22	0.40
1:D:644:GLN:OE1	1:D:644:GLN:N	2.53	0.40
1:E:70:LEU:HA	1:E:70:LEU:HD23	1.75	0.40

There are no symmetry-related clashes.

5.3 Torsion angles

5.3.1 Protein backbone

In the following table, the Percentiles column shows the percent Ramachandran outliers of the chain as a percentile score with respect to all PDB entries followed by that with respect to all EM

entries.

The Analysed column shows the number of residues for which the backbone conformation was analysed, and the total number of residues.

Mol	Chain	Analysed	Favoured	Allowed	Outliers	Percentiles	
1	A	849/852 (100%)	774 (91%)	73 (9%)	2 (0%)	43	72
1	B	849/852 (100%)	722 (85%)	119 (14%)	8 (1%)	14	46
1	C	849/852 (100%)	747 (88%)	99 (12%)	3 (0%)	30	60
1	D	849/852 (100%)	802 (94%)	46 (5%)	1 (0%)	48	79
1	E	849/852 (100%)	812 (96%)	36 (4%)	1 (0%)	48	79
All	All	4245/4260 (100%)	3857 (91%)	373 (9%)	15 (0%)	31	60

All (15) Ramachandran outliers are listed below:

Mol	Chain	Res	Type
1	B	840	PRO
1	A	300	PHE
1	B	629	TYR
1	B	665	ILE
1	B	821	ILE
1	D	671	ASN
1	C	256	LEU
1	A	5	ALA
1	B	311	SER
1	E	6	ASP
1	B	621	LEU
1	C	596	PRO
1	C	601	GLU
1	B	667	PRO
1	B	632	GLY

5.3.2 Protein sidechains ⓘ

In the following table, the Percentiles column shows the percent sidechain outliers of the chain as a percentile score with respect to all PDB entries followed by that with respect to all EM entries.

The Analysed column shows the number of residues for which the sidechain conformation was analysed, and the total number of residues.

Mol	Chain	Analysed	Rotameric	Outliers	Percentiles	
1	A	737/737 (100%)	715 (97%)	22 (3%)	36	60

Continued on next page...

Continued from previous page...

Mol	Chain	Analysed	Rotameric	Outliers	Percentiles	
1	B	737/737 (100%)	701 (95%)	36 (5%)	22	49
1	C	737/737 (100%)	712 (97%)	25 (3%)	32	57
1	D	737/737 (100%)	721 (98%)	16 (2%)	45	65
1	E	737/737 (100%)	730 (99%)	7 (1%)	70	76
All	All	3685/3685 (100%)	3579 (97%)	106 (3%)	38	60

All (106) residues with a non-rotameric sidechain are listed below:

Mol	Chain	Res	Type
1	A	9	ASN
1	A	42	TYR
1	A	43	GLU
1	A	45	ARG
1	A	46	ASP
1	A	47	LEU
1	A	49	LYS
1	A	50	SER
1	A	89	LYS
1	A	110	VAL
1	A	132	MET
1	A	133	LEU
1	A	215	VAL
1	A	229	MET
1	A	298	LEU
1	A	299	ASN
1	A	300	PHE
1	A	317	THR
1	A	474	LYS
1	A	518	LEU
1	A	605	THR
1	A	770	ILE
1	B	1	MET
1	B	56	TYR
1	B	64	VAL
1	B	90	ASN
1	B	91	VAL
1	B	110	VAL
1	B	237	ILE
1	B	245	ASP
1	B	264	LEU
1	B	283	LEU

Continued on next page...

Continued from previous page...

Mol	Chain	Res	Type
1	B	307	VAL
1	B	310	SER
1	B	315	VAL
1	B	350	ILE
1	B	369	PHE
1	B	376	GLU
1	B	383	LEU
1	B	450	LYS
1	B	453	ASP
1	B	571	ILE
1	B	579	MET
1	B	584	ARG
1	B	593	MET
1	B	615	VAL
1	B	621	LEU
1	B	625	TRP
1	B	626	VAL
1	B	627	GLU
1	B	630	ARG
1	B	657	ILE
1	B	725	ASN
1	B	729	LYS
1	B	740	GLU
1	B	742	TRP
1	B	808	GLU
1	B	817	GLU
1	C	25	GLU
1	C	49	LYS
1	C	191	ASN
1	C	196	VAL
1	C	247	GLU
1	C	330	LEU
1	C	344	ILE
1	C	361	ASN
1	C	366	LEU
1	C	372	ASN
1	C	440	SER
1	C	499	ASN
1	C	511	THR
1	C	518	LEU
1	C	597	THR
1	C	600	LEU

Continued on next page...

Continued from previous page...

Mol	Chain	Res	Type
1	C	601	GLU
1	C	639	GLU
1	C	678	SER
1	C	723	ASN
1	C	725	ASN
1	C	767	GLN
1	C	769	VAL
1	C	773	GLN
1	C	804	MET
1	D	3	ILE
1	D	115	MET
1	D	133	LEU
1	D	146	VAL
1	D	159	TYR
1	D	187	VAL
1	D	199	VAL
1	D	239	TYR
1	D	315	VAL
1	D	317	THR
1	D	603	SER
1	D	605	THR
1	D	674	LYS
1	D	727	LEU
1	D	741	ARG
1	D	807	HIS
1	E	73	ASP
1	E	76	GLU
1	E	127	SER
1	E	358	ASP
1	E	600	LEU
1	E	678	SER
1	E	831	ARG

Sometimes sidechains can be flipped to improve hydrogen bonding and reduce clashes. All (54) such sidechains are listed below:

Mol	Chain	Res	Type
1	A	9	ASN
1	A	248	ASN
1	A	301	ASN
1	A	378	ASN
1	A	384	HIS
1	A	499	ASN

Continued on next page...

Continued from previous page...

Mol	Chain	Res	Type
1	A	671	ASN
1	A	725	ASN
1	A	773	GLN
1	A	776	ASN
1	A	807	HIS
1	A	843	GLN
1	B	90	ASN
1	B	145	ASN
1	B	277	ASN
1	B	280	HIS
1	B	285	ASN
1	B	384	HIS
1	B	437	ASN
1	B	563	GLN
1	B	663	ASN
1	B	683	GLN
1	B	836	ASN
1	C	41	ASN
1	C	248	ASN
1	C	372	ASN
1	C	390	GLN
1	C	594	ASN
1	C	644	GLN
1	C	695	HIS
1	C	725	ASN
1	C	773	GLN
1	C	810	ASN
1	C	822	ASN
1	C	843	GLN
1	C	852	ASN
1	D	9	ASN
1	D	205	GLN
1	D	252	GLN
1	D	285	ASN
1	D	384	HIS
1	D	390	GLN
1	D	458	ASN
1	D	663	ASN
1	D	671	ASN
1	D	725	ASN
1	D	822	ASN
1	E	212	GLN

Continued on next page...

Continued from previous page...

Mol	Chain	Res	Type
1	E	214	ASN
1	E	230	ASN
1	E	248	ASN
1	E	277	ASN
1	E	552	GLN
1	E	645	ASN

5.3.3 RNA ⓘ

There are no RNA molecules in this entry.

5.4 Non-standard residues in protein, DNA, RNA chains ⓘ

5 non-standard protein/DNA/RNA residues are modelled in this entry.

In the following table, the Counts columns list the number of bonds (or angles) for which Mogul statistics could be retrieved, the number of bonds (or angles) that are observed in the model and the number of bonds (or angles) that are defined in the Chemical Component Dictionary. The Link column lists molecule types, if any, to which the group is linked. The Z score for a bond length (or angle) is the number of standard deviations the observed value is removed from the expected value. A bond length (or angle) with $|Z| > 2$ is considered an outlier worth inspection. RMSZ is the root-mean-square of all Z scores of the bond lengths (or angles).

Mol	Type	Chain	Res	Link	Bond lengths			Bond angles		
					Counts	RMSZ	$\# Z > 2$	Counts	RMSZ	$\# Z > 2$
1	LLP	A	609	1	23,24,25	0.50	0	25,32,34	0.60	0
1	LLP	C	609	1	7,8,25	0.43	0	3,8,34	0.12	0
1	LLP	D	609	1	23,24,25	0.56	0	25,32,34	0.57	0
1	LLP	E	609	1	23,24,25	0.49	0	25,32,34	0.50	0
1	LLP	B	609	1	23,24,25	0.51	0	25,32,34	0.57	0

In the following table, the Chirals column lists the number of chiral outliers, the number of chiral centers analysed, the number of these observed in the model and the number defined in the Chemical Component Dictionary. Similar counts are reported in the Torsion and Rings columns. '-' means no outliers of that kind were identified.

Mol	Type	Chain	Res	Link	Chirals	Torsions	Rings
1	LLP	A	609	1	-	8/16/17/19	0/1/1/1
1	LLP	C	609	1	-	0/6/7/19	-
1	LLP	D	609	1	-	9/16/17/19	0/1/1/1
1	LLP	E	609	1	-	14/16/17/19	0/1/1/1

Continued on next page...

Continued from previous page...

Mol	Type	Chain	Res	Link	Chirals	Torsions	Rings
1	LLP	B	609	1	-	2/16/17/19	0/1/1/1

There are no bond length outliers.

There are no bond angle outliers.

There are no chirality outliers.

All (33) torsion outliers are listed below:

Mol	Chain	Res	Type	Atoms
1	A	609	LLP	C4-C4'-NZ-CE
1	D	609	LLP	C4-C4'-NZ-CE
1	D	609	LLP	C5'-OP4-P-OP1
1	D	609	LLP	C5'-OP4-P-OP2
1	D	609	LLP	C5'-OP4-P-OP3
1	D	609	LLP	N-CA-CB-CG
1	D	609	LLP	C-CA-CB-CG
1	E	609	LLP	C5'-OP4-P-OP1
1	E	609	LLP	C5'-OP4-P-OP2
1	E	609	LLP	C5'-OP4-P-OP3
1	E	609	LLP	N-CA-CB-CG
1	E	609	LLP	C-CA-CB-CG
1	E	609	LLP	O-C-CA-CB
1	B	609	LLP	C4-C4'-NZ-CE
1	E	609	LLP	C4-C4'-NZ-CE
1	D	609	LLP	CG-CD-CE-NZ
1	E	609	LLP	CG-CD-CE-NZ
1	E	609	LLP	CE-CD-CG-CB
1	A	609	LLP	C3-C4-C4'-NZ
1	E	609	LLP	CA-CB-CG-CD
1	A	609	LLP	C5-C4-C4'-NZ
1	D	609	LLP	CE-CD-CG-CB
1	E	609	LLP	C3-C4-C4'-NZ
1	A	609	LLP	CA-CB-CG-CD
1	B	609	LLP	CG-CD-CE-NZ
1	A	609	LLP	C4-C5-C5'-OP4
1	A	609	LLP	N-CA-CB-CG
1	D	609	LLP	C3-C4-C4'-NZ
1	E	609	LLP	C5-C4-C4'-NZ
1	A	609	LLP	C6-C5-C5'-OP4
1	E	609	LLP	C6-C5-C5'-OP4
1	E	609	LLP	C4-C5-C5'-OP4
1	A	609	LLP	C-CA-CB-CG

There are no ring outliers.

5 monomers are involved in 9 short contacts:

Mol	Chain	Res	Type	Clashes	Symm-Clashes
1	A	609	LLP	1	0
1	C	609	LLP	2	0
1	D	609	LLP	3	0
1	E	609	LLP	1	0
1	B	609	LLP	2	0

5.5 Carbohydrates [i](#)

There are no oligosaccharides in this entry.

5.6 Ligand geometry [i](#)

8 ligands are modelled in this entry.

In the following table, the Counts columns list the number of bonds (or angles) for which Mogul statistics could be retrieved, the number of bonds (or angles) that are observed in the model and the number of bonds (or angles) that are defined in the Chemical Component Dictionary. The Link column lists molecule types, if any, to which the group is linked. The Z score for a bond length (or angle) is the number of standard deviations the observed value is removed from the expected value. A bond length (or angle) with $|Z| > 2$ is considered an outlier worth inspection. RMSZ is the root-mean-square of all Z scores of the bond lengths (or angles).

Mol	Type	Chain	Res	Link	Bond lengths			Bond angles		
					Counts	RMSZ	$\# Z > 2$	Counts	RMSZ	$\# Z > 2$
2	AMP	A	901	-	25,25,25	0.34	0	37,38,38	0.38	0
2	AMP	A	902	-	25,25,25	1.42	4 (16%)	37,38,38	1.89	8 (21%)
2	AMP	B	901	-	25,25,25	0.34	0	37,38,38	0.46	0
2	AMP	B	902	-	25,25,25	1.42	4 (16%)	37,38,38	1.91	7 (18%)
2	AMP	D	901	-	25,25,25	0.33	0	37,38,38	0.36	0
2	AMP	E	901	-	25,25,25	0.34	0	37,38,38	0.40	0
2	AMP	D	902	-	25,25,25	0.34	0	37,38,38	0.37	0
2	AMP	E	902	-	25,25,25	0.34	0	37,38,38	0.38	0

In the following table, the Chirals column lists the number of chiral outliers, the number of chiral centers analysed, the number of these observed in the model and the number defined in the Chemical Component Dictionary. Similar counts are reported in the Torsion and Rings columns. '-' means no outliers of that kind were identified.

Mol	Type	Chain	Res	Link	Chirals	Torsions	Rings
2	AMP	A	901	-	-	6/10/26/26	0/3/3/3
2	AMP	A	902	-	-	3/10/26/26	0/3/3/3
2	AMP	B	901	-	-	2/10/26/26	0/3/3/3
2	AMP	B	902	-	-	7/10/26/26	0/3/3/3
2	AMP	D	901	-	-	7/10/26/26	0/3/3/3
2	AMP	E	901	-	-	3/10/26/26	0/3/3/3
2	AMP	D	902	-	-	6/10/26/26	0/3/3/3
2	AMP	E	902	-	-	8/10/26/26	0/3/3/3

All (8) bond length outliers are listed below:

Mol	Chain	Res	Type	Atoms	Z	Observed(Å)	Ideal(Å)
2	B	902	AMP	C5-C4	4.86	1.47	1.39
2	A	902	AMP	C5-C4	4.76	1.47	1.39
2	A	902	AMP	C5-C6	2.80	1.48	1.41
2	B	902	AMP	C5-C6	2.71	1.48	1.41
2	A	902	AMP	C8-N7	2.36	1.36	1.31
2	B	902	AMP	C5-N7	-2.34	1.34	1.39
2	B	902	AMP	C8-N7	2.18	1.35	1.31
2	A	902	AMP	C5-N7	-2.17	1.35	1.39

All (15) bond angle outliers are listed below:

Mol	Chain	Res	Type	Atoms	Z	Observed(°)	Ideal(°)
2	B	902	AMP	C5-C4-N3	-6.13	118.28	126.72
2	A	902	AMP	C5-C4-N3	-5.88	118.62	126.72
2	B	902	AMP	N3-C4-N9	4.99	135.65	127.17
2	A	902	AMP	N3-C4-N9	4.61	135.00	127.17
2	A	902	AMP	C2-N3-C4	3.76	121.01	111.83
2	B	902	AMP	C2-N3-C4	3.76	121.01	111.83
2	A	902	AMP	C4-C5-N7	-3.56	106.51	110.58
2	B	902	AMP	C4-C5-N7	-3.28	106.84	110.58
2	A	902	AMP	N3-C2-N1	-3.26	123.65	128.58
2	B	902	AMP	N3-C2-N1	-3.16	123.80	128.58
2	A	902	AMP	C4-N9-C8	2.60	108.46	105.74
2	A	902	AMP	C5-N7-C8	2.58	107.50	103.45
2	B	902	AMP	C5-N7-C8	2.44	107.29	103.45
2	B	902	AMP	C4-N9-C8	2.39	108.24	105.74
2	A	902	AMP	C6-C5-N7	2.17	136.28	132.09

There are no chirality outliers.

All (42) torsion outliers are listed below:

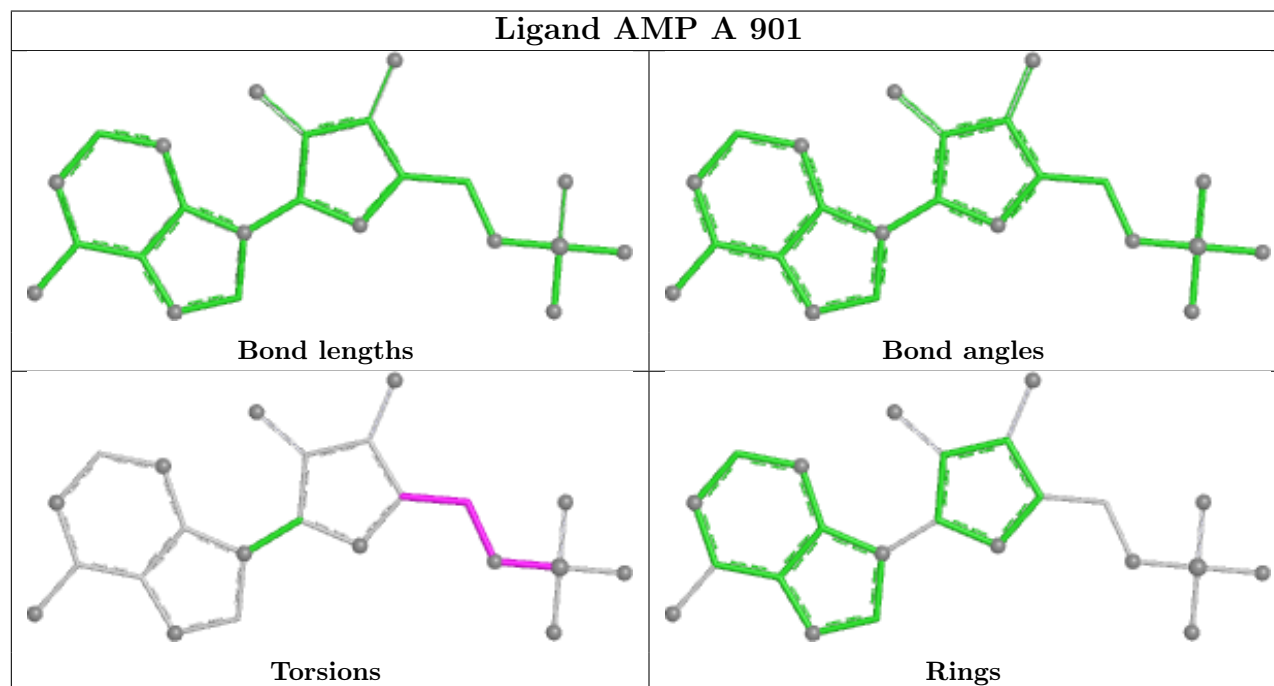
Mol	Chain	Res	Type	Atoms
2	A	901	AMP	C5'-O5'-P-O2P
2	A	901	AMP	C5'-O5'-P-O3P
2	B	901	AMP	O4'-C1'-N9-C8
2	B	901	AMP	O4'-C1'-N9-C4
2	B	902	AMP	C5'-O5'-P-O1P
2	B	902	AMP	C5'-O5'-P-O2P
2	B	902	AMP	C5'-O5'-P-O3P
2	D	901	AMP	C5'-O5'-P-O2P
2	D	901	AMP	C5'-O5'-P-O3P
2	D	901	AMP	C2'-C1'-N9-C8
2	D	902	AMP	C5'-O5'-P-O2P
2	E	901	AMP	C5'-O5'-P-O2P
2	E	901	AMP	C5'-O5'-P-O3P
2	E	902	AMP	C5'-O5'-P-O2P
2	E	902	AMP	C5'-O5'-P-O3P
2	A	901	AMP	O4'-C4'-C5'-O5'
2	A	901	AMP	C3'-C4'-C5'-O5'
2	A	902	AMP	C3'-C4'-C5'-O5'
2	B	902	AMP	O4'-C4'-C5'-O5'
2	B	902	AMP	C3'-C4'-C5'-O5'
2	D	901	AMP	O4'-C4'-C5'-O5'
2	D	902	AMP	O4'-C4'-C5'-O5'
2	D	902	AMP	C3'-C4'-C5'-O5'
2	E	902	AMP	O4'-C4'-C5'-O5'
2	E	902	AMP	C3'-C4'-C5'-O5'
2	D	901	AMP	C2'-C1'-N9-C4
2	D	901	AMP	C3'-C4'-C5'-O5'
2	A	902	AMP	O4'-C4'-C5'-O5'
2	E	902	AMP	C2'-C1'-N9-C8
2	A	901	AMP	C5'-O5'-P-O1P
2	D	901	AMP	C5'-O5'-P-O1P
2	D	902	AMP	C5'-O5'-P-O1P
2	E	901	AMP	C5'-O5'-P-O1P
2	A	901	AMP	C4'-C5'-O5'-P
2	D	902	AMP	C5'-O5'-P-O3P
2	E	902	AMP	C2'-C1'-N9-C4
2	B	902	AMP	C4'-C5'-O5'-P
2	A	902	AMP	C5'-O5'-P-O1P
2	E	902	AMP	C4'-C5'-O5'-P
2	E	902	AMP	C5'-O5'-P-O1P
2	D	902	AMP	C4'-C5'-O5'-P
2	B	902	AMP	O4'-C1'-N9-C8

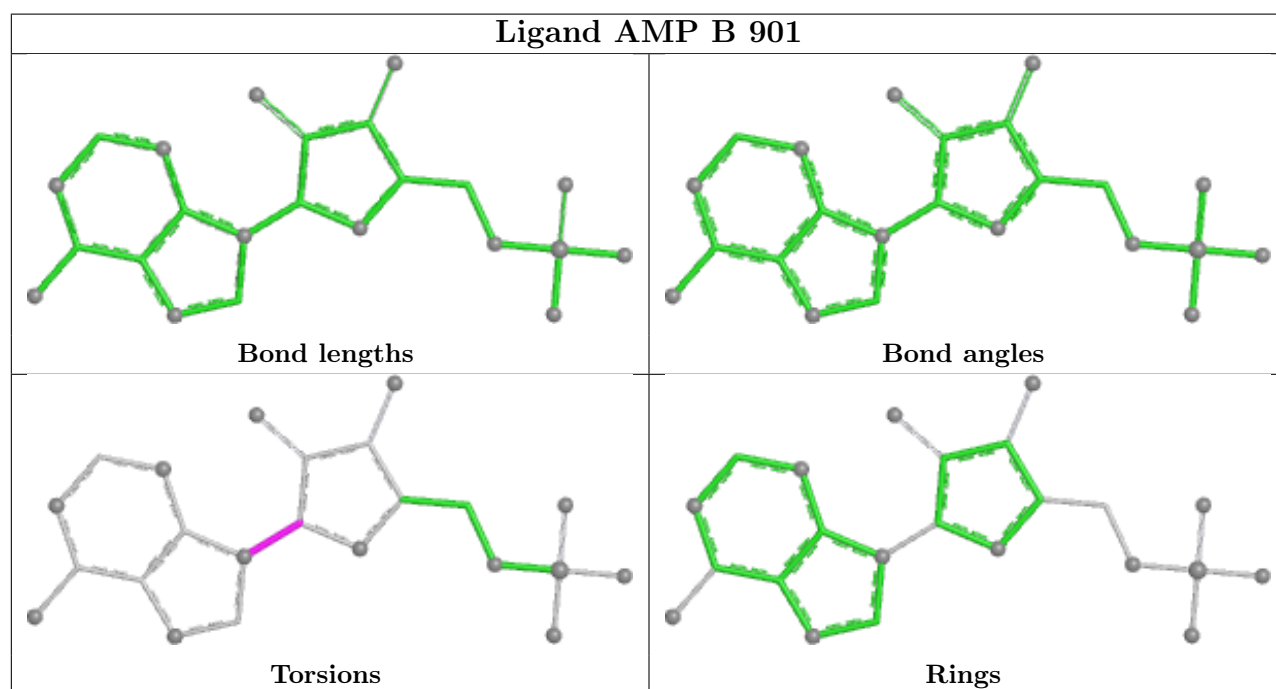
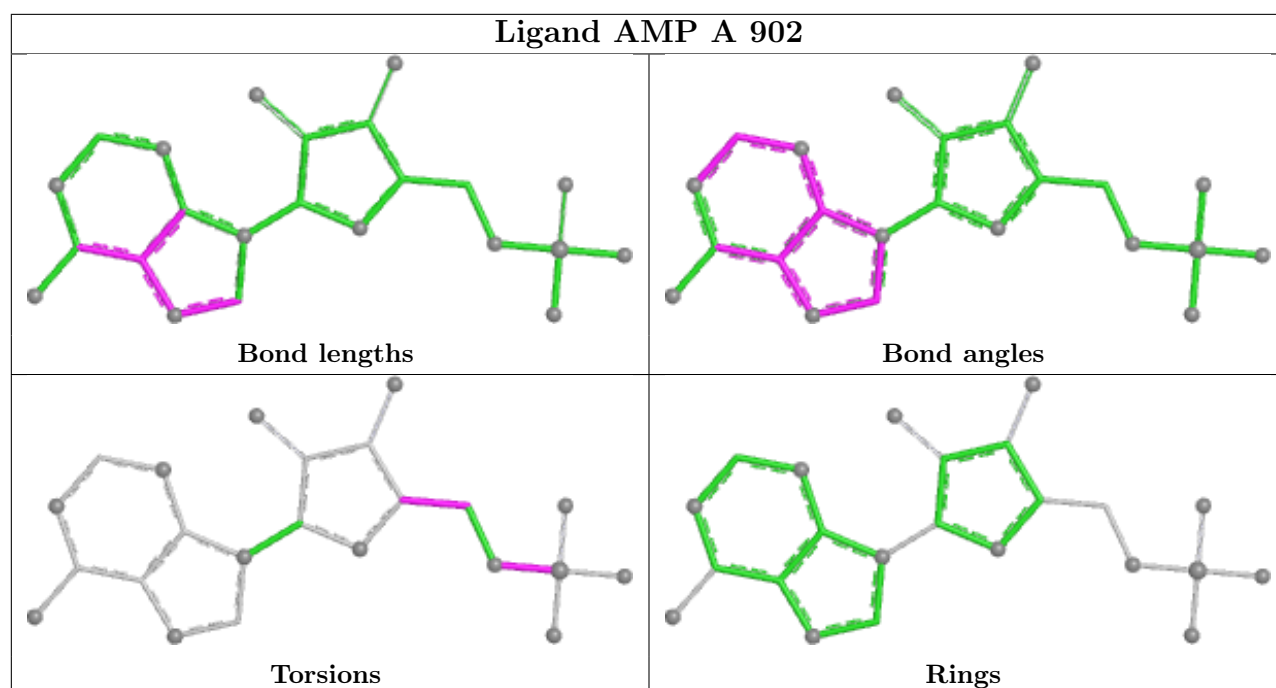
There are no ring outliers.

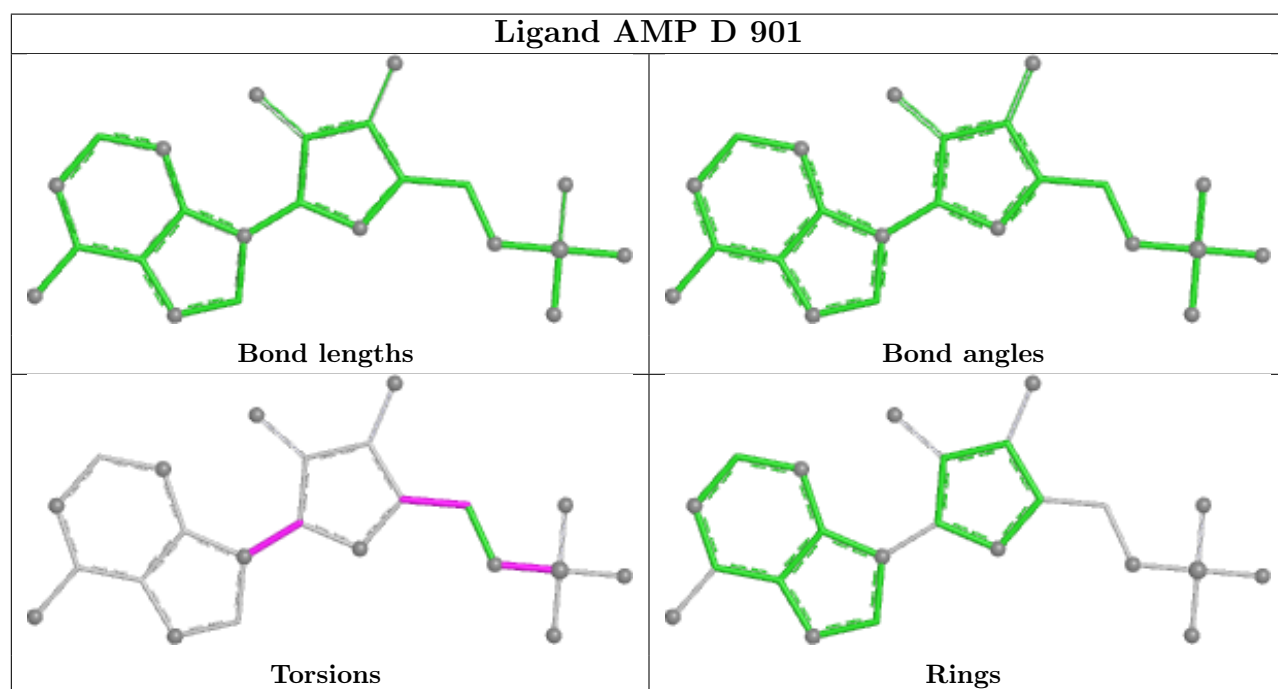
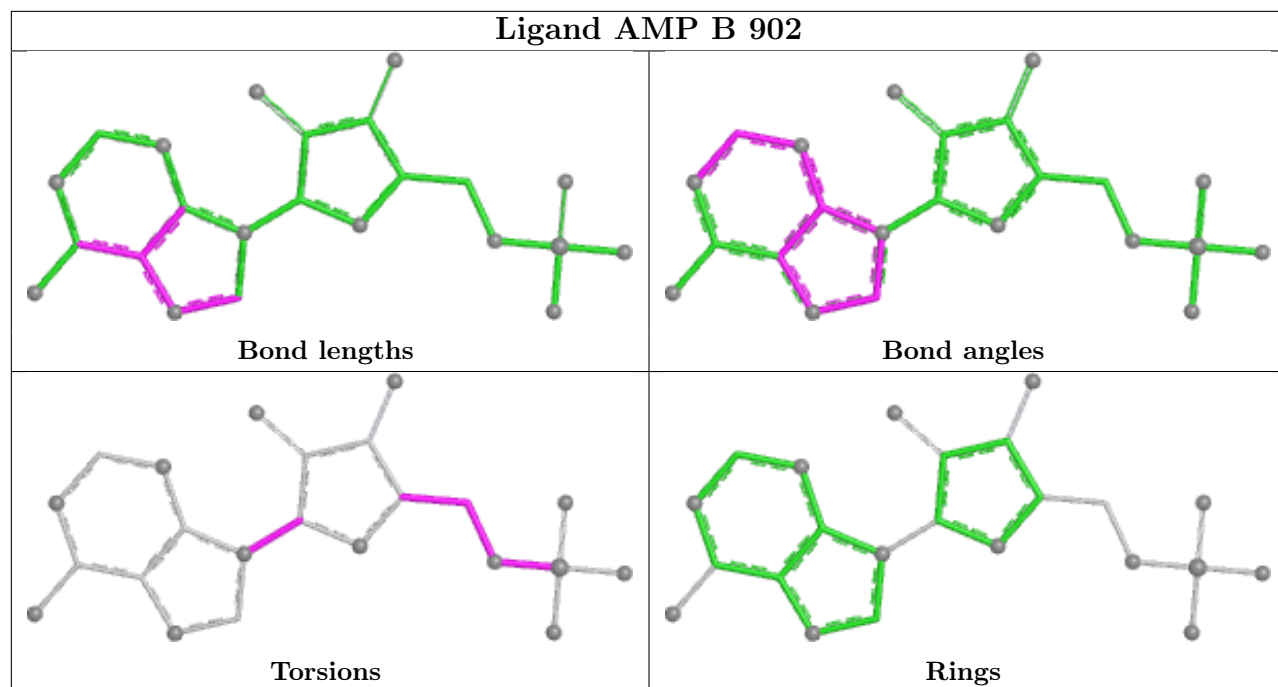
5 monomers are involved in 12 short contacts:

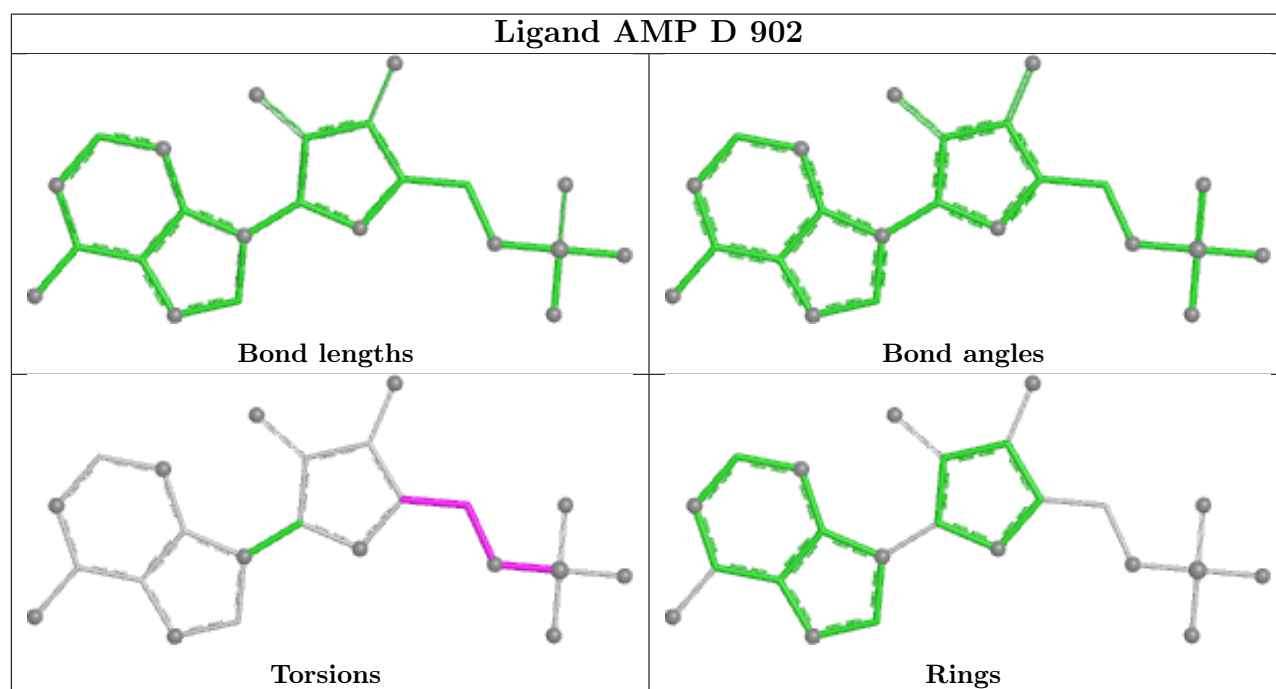
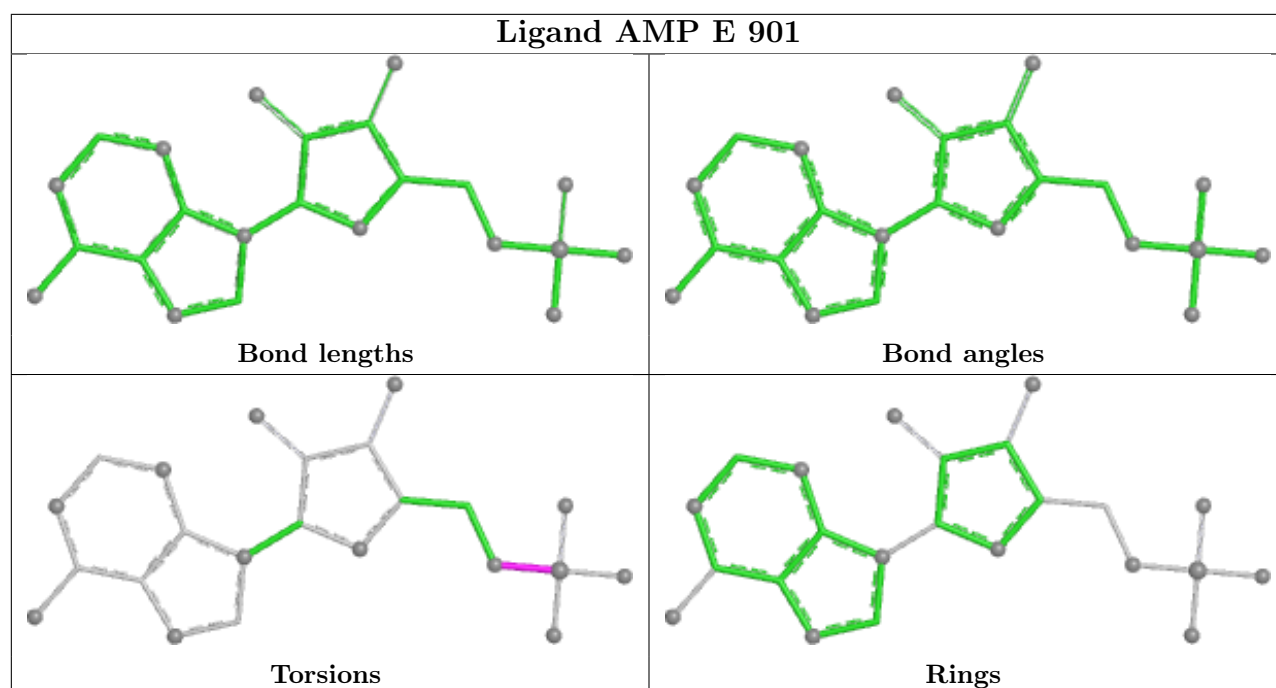
Mol	Chain	Res	Type	Clashes	Symm-Clashes
2	A	901	AMP	3	0
2	B	901	AMP	4	0
2	B	902	AMP	3	0
2	E	901	AMP	1	0
2	D	902	AMP	1	0

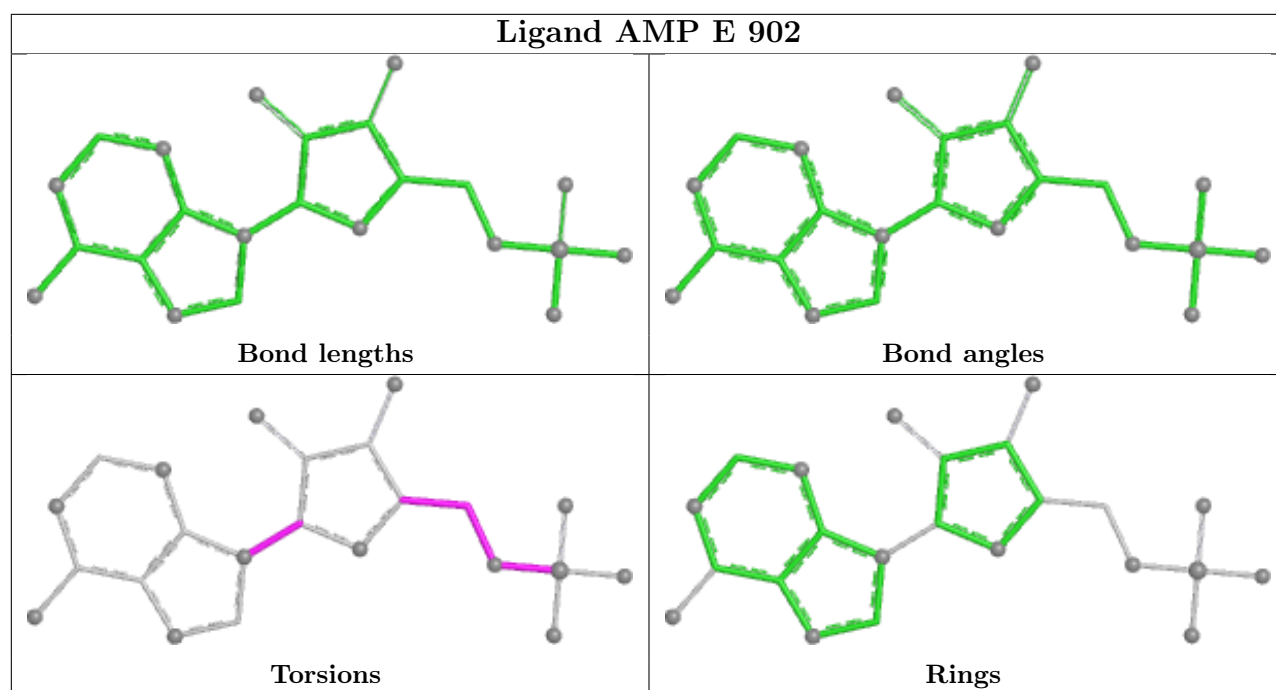
The following is a two-dimensional graphical depiction of Mogul quality analysis of bond lengths, bond angles, torsion angles, and ring geometry for all instances of the Ligand of Interest. In addition, ligands with molecular weight > 250 and outliers as shown on the validation Tables will also be included. For torsion angles, if less than 5% of the Mogul distribution of torsion angles is within 10 degrees of the torsion angle in question, then that torsion angle is considered an outlier. Any bond that is central to one or more torsion angles identified as an outlier by Mogul will be highlighted in the graph. For rings, the root-mean-square deviation (RMSD) between the ring in question and similar rings identified by Mogul is calculated over all ring torsion angles. If the average RMSD is greater than 60 degrees and the minimal RMSD between the ring in question and any Mogul-identified rings is also greater than 60 degrees, then that ring is considered an outlier. The outliers are highlighted in purple. The color gray indicates Mogul did not find sufficient equivalents in the CSD to analyse the geometry.











5.7 Other polymers [i](#)

There are no such residues in this entry.

5.8 Polymer linkage issues [i](#)

There are no chain breaks in this entry.

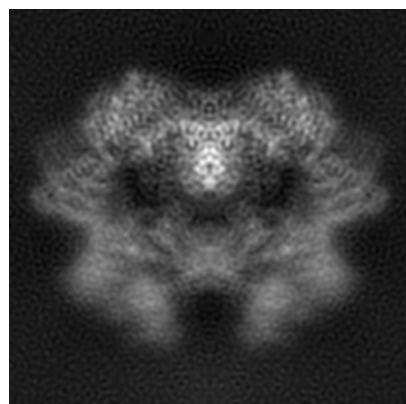
6 Map visualisation [i](#)

This section contains visualisations of the EMDB entry EMD-64491. These allow visual inspection of the internal detail of the map and identification of artifacts.

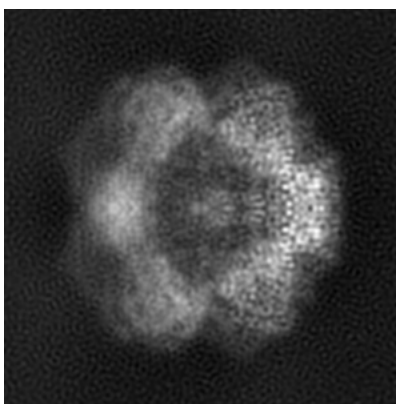
Images derived from a raw map, generated by summing the deposited half-maps, are presented below the corresponding image components of the primary map to allow further visual inspection and comparison with those of the primary map.

6.1 Orthogonal projections [i](#)

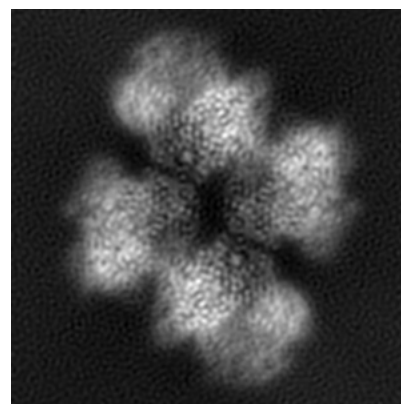
6.1.1 Primary map



X

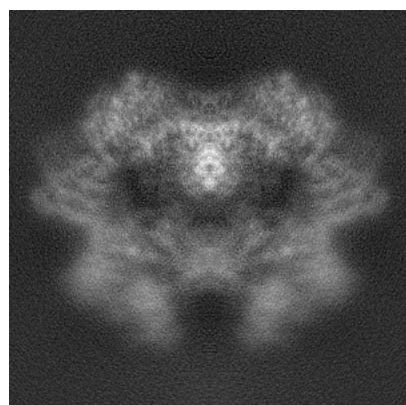


Y

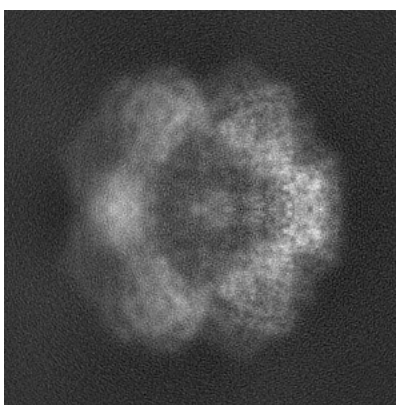


Z

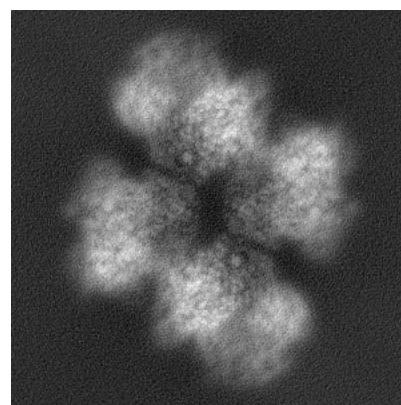
6.1.2 Raw map



X



Y

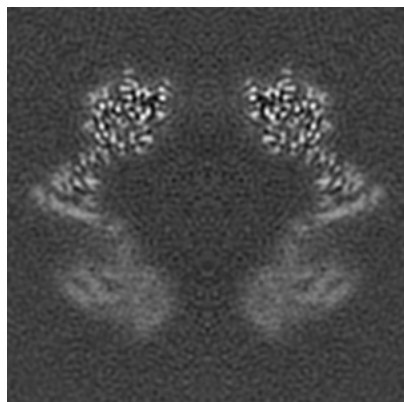


Z

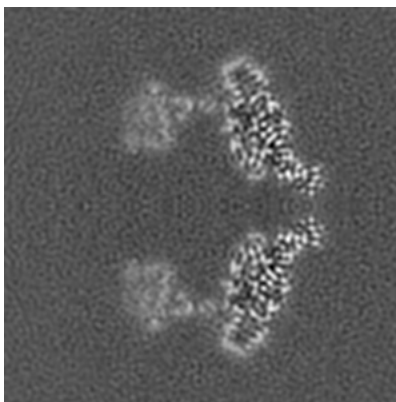
The images above show the map projected in three orthogonal directions.

6.2 Central slices [i](#)

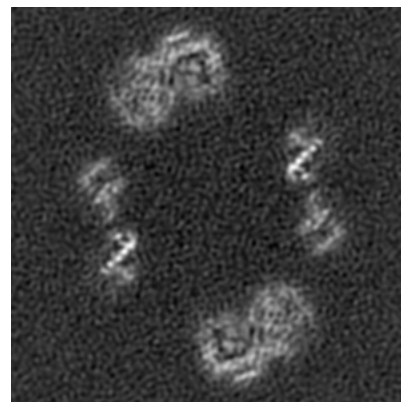
6.2.1 Primary map



X Index: 150

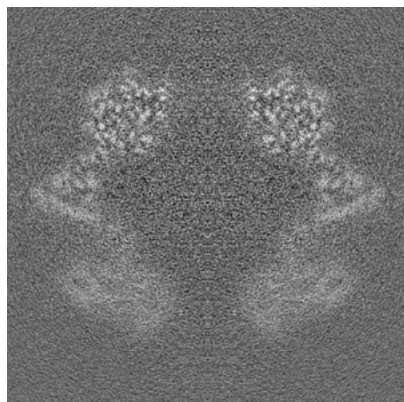


Y Index: 150

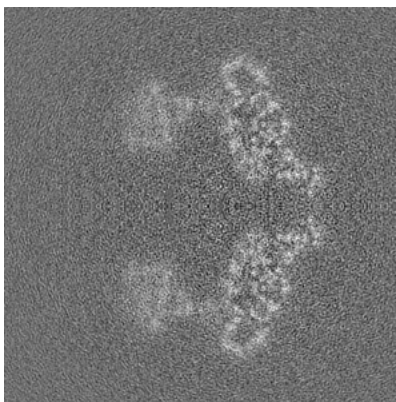


Z Index: 150

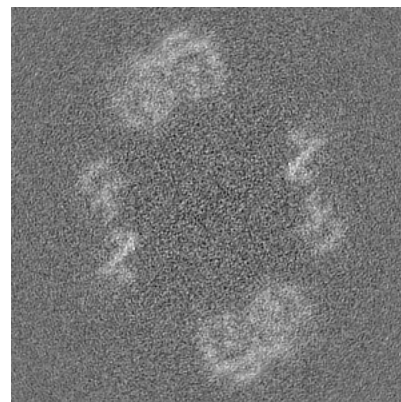
6.2.2 Raw map



X Index: 150



Y Index: 150

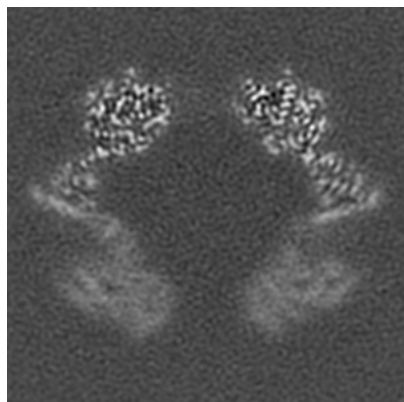


Z Index: 150

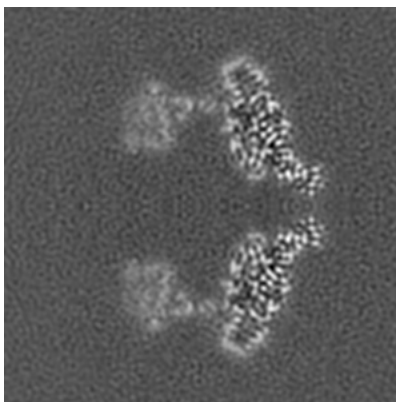
The images above show central slices of the map in three orthogonal directions.

6.3 Largest variance slices [i](#)

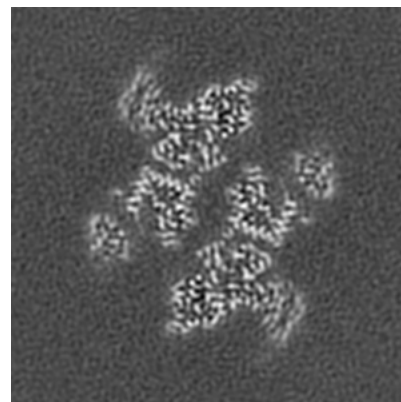
6.3.1 Primary map



X Index: 148

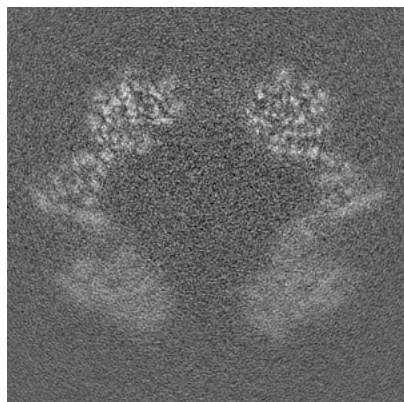


Y Index: 150

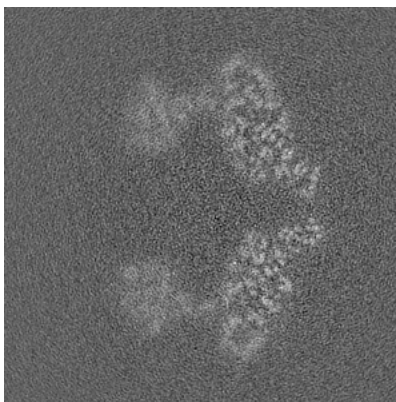


Z Index: 213

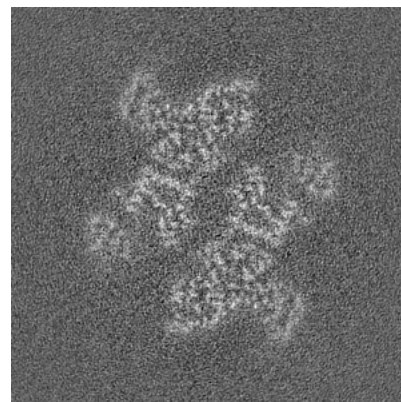
6.3.2 Raw map



X Index: 153



Y Index: 148

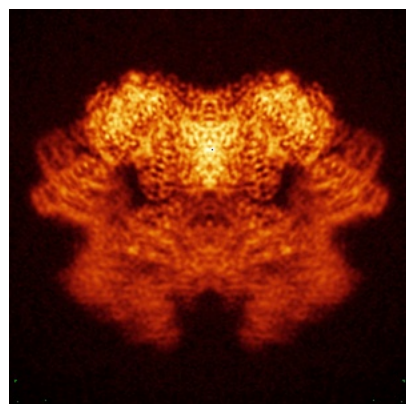


Z Index: 213

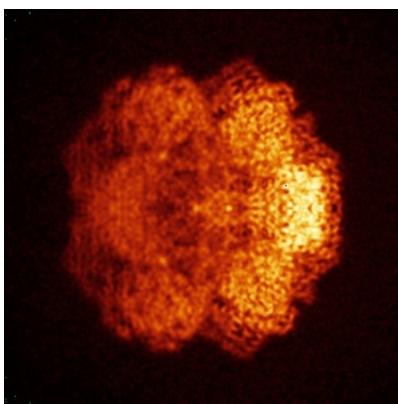
The images above show the largest variance slices of the map in three orthogonal directions.

6.4 Orthogonal standard-deviation projections (False-color) [i](#)

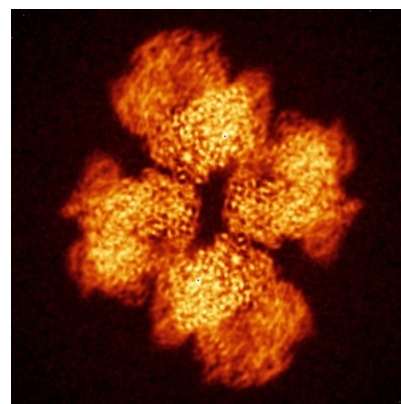
6.4.1 Primary map



X

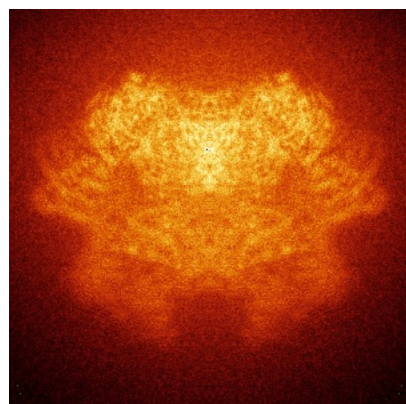


Y

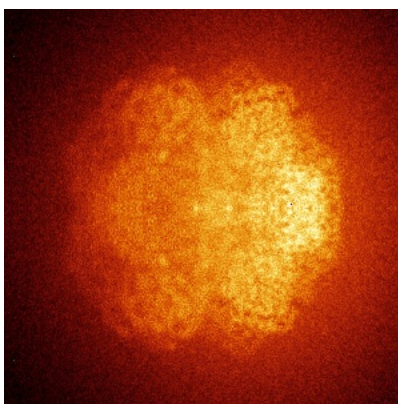


Z

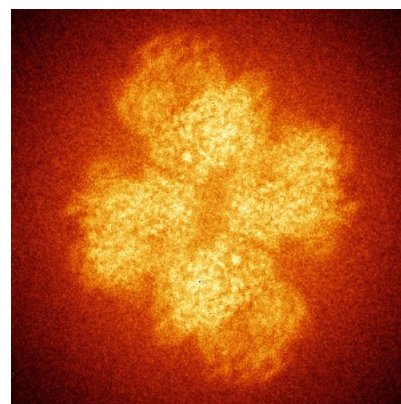
6.4.2 Raw map



X



Y

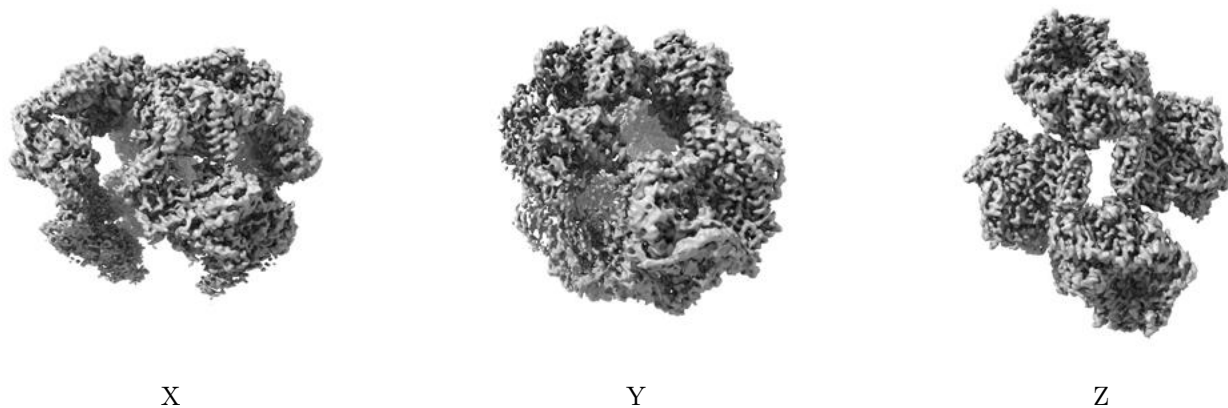


Z

The images above show the map standard deviation projections with false color in three orthogonal directions. Minimum values are shown in green, max in blue, and dark to light orange shades represent small to large values respectively.

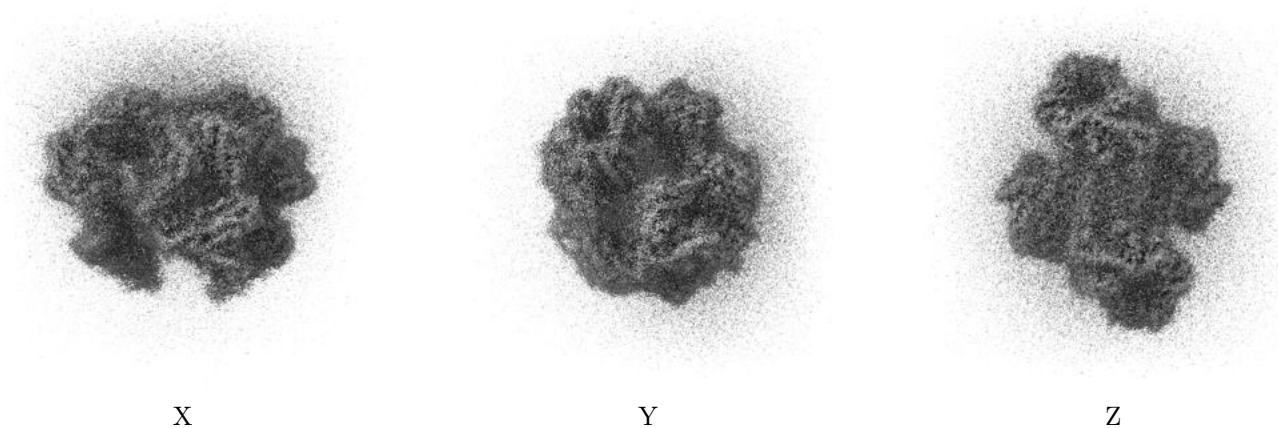
6.5 Orthogonal surface views [i](#)

6.5.1 Primary map



The images above show the 3D surface view of the map at the recommended contour level 0.117. These images, in conjunction with the slice images, may facilitate assessment of whether an appropriate contour level has been provided.

6.5.2 Raw map



These images show the 3D surface of the raw map. The raw map's contour level was selected so that its surface encloses the same volume as the primary map does at its recommended contour level.

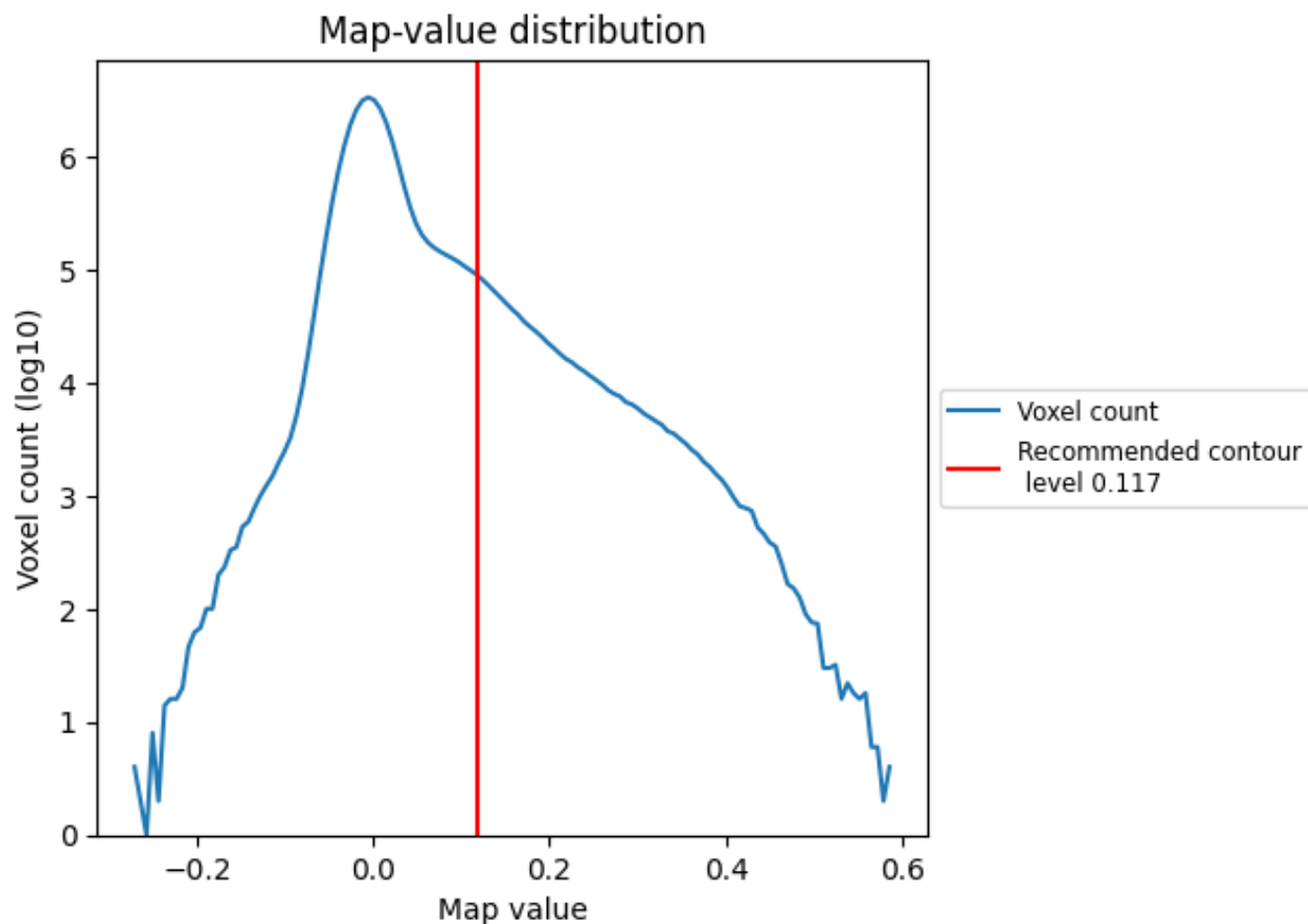
6.6 Mask visualisation [i](#)

This section was not generated. No masks/segmentation were deposited.

7 Map analysis [i](#)

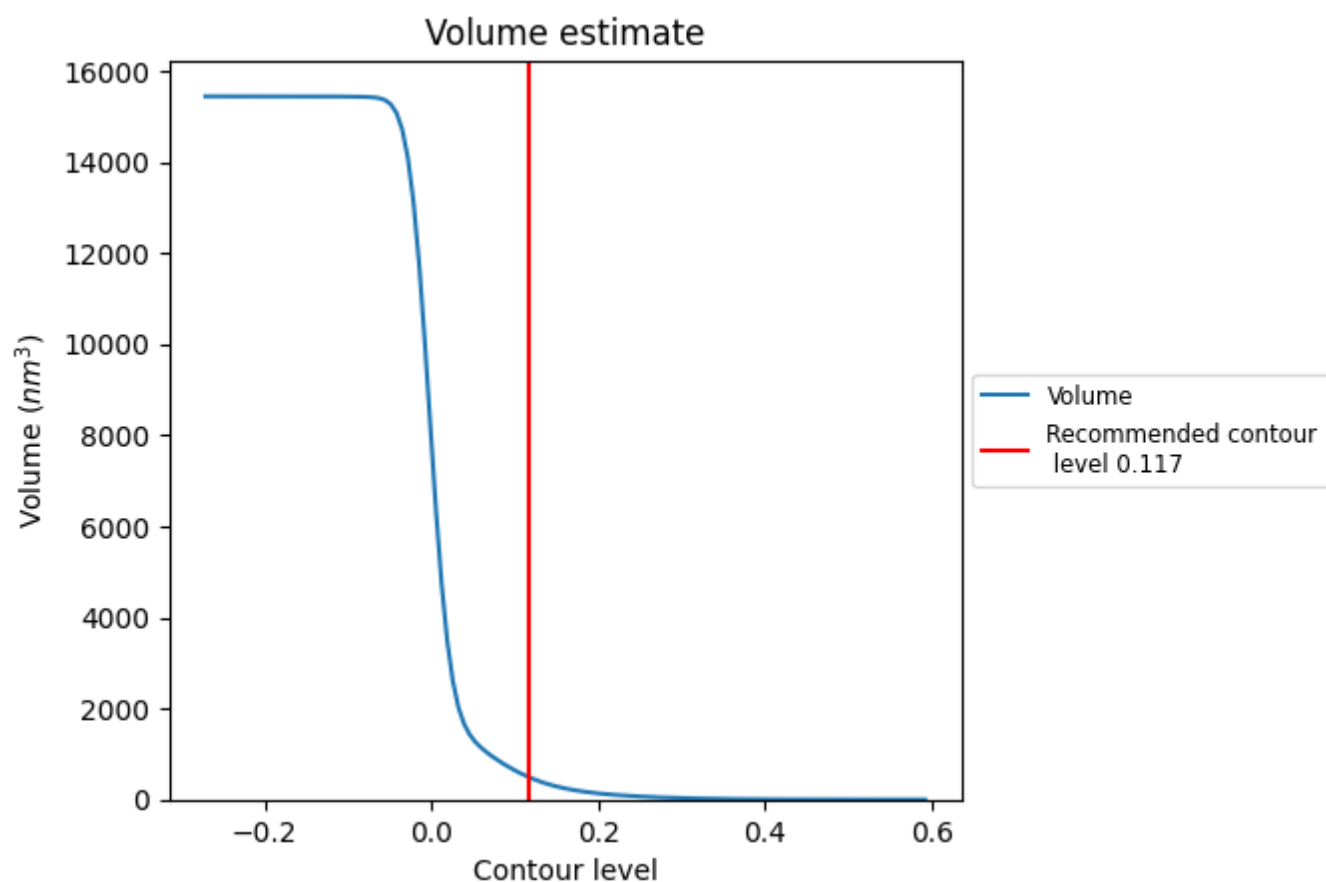
This section contains the results of statistical analysis of the map.

7.1 Map-value distribution [i](#)



The map-value distribution is plotted in 128 intervals along the x-axis. The y-axis is logarithmic. A spike in this graph at zero usually indicates that the volume has been masked.

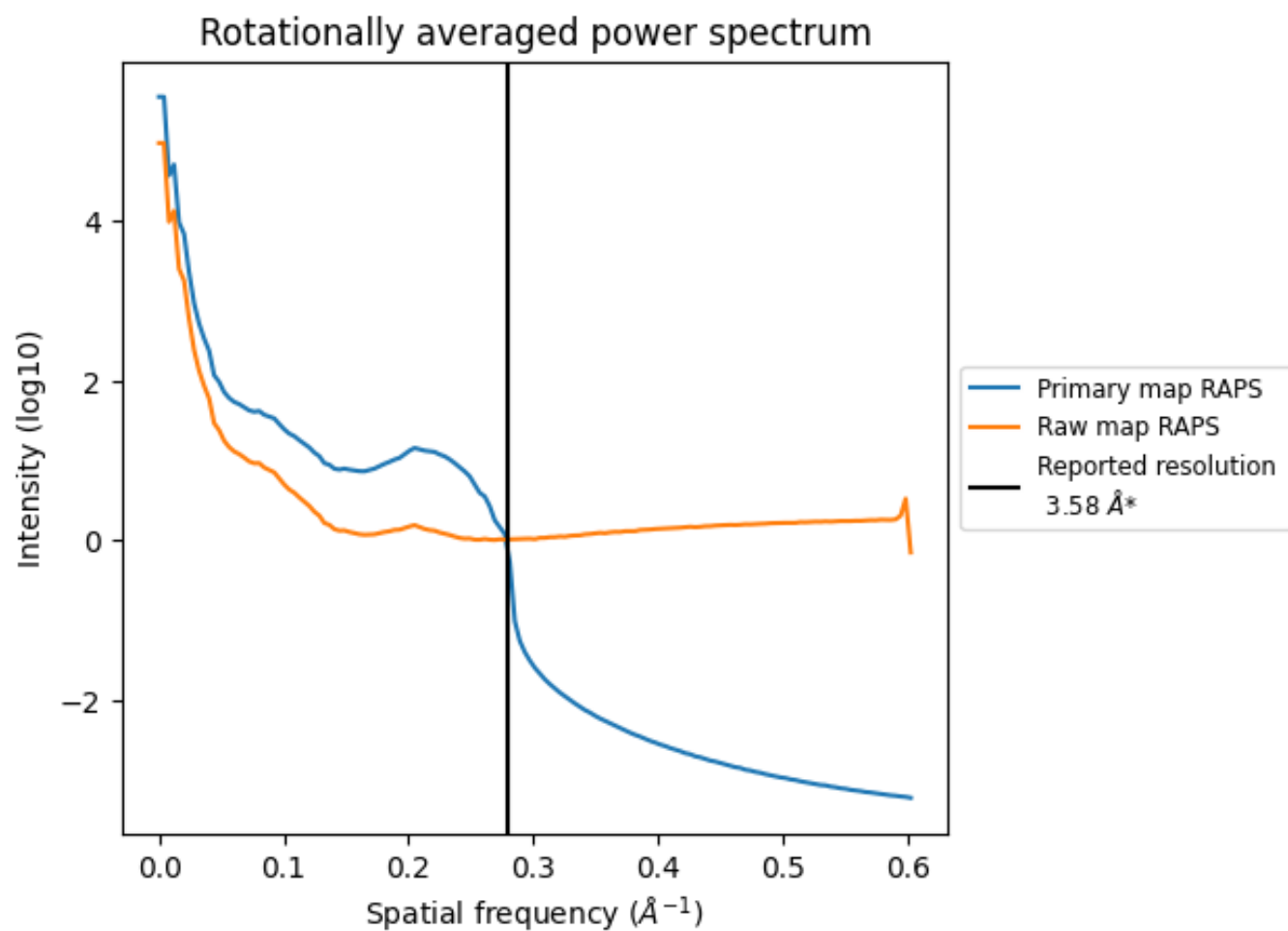
7.2 Volume estimate [i](#)



The volume at the recommended contour level is 494 nm³; this corresponds to an approximate mass of 446 kDa.

The volume estimate graph shows how the enclosed volume varies with the contour level. The recommended contour level is shown as a vertical line and the intersection between the line and the curve gives the volume of the enclosed surface at the given level.

7.3 Rotationally averaged power spectrum ⓘ

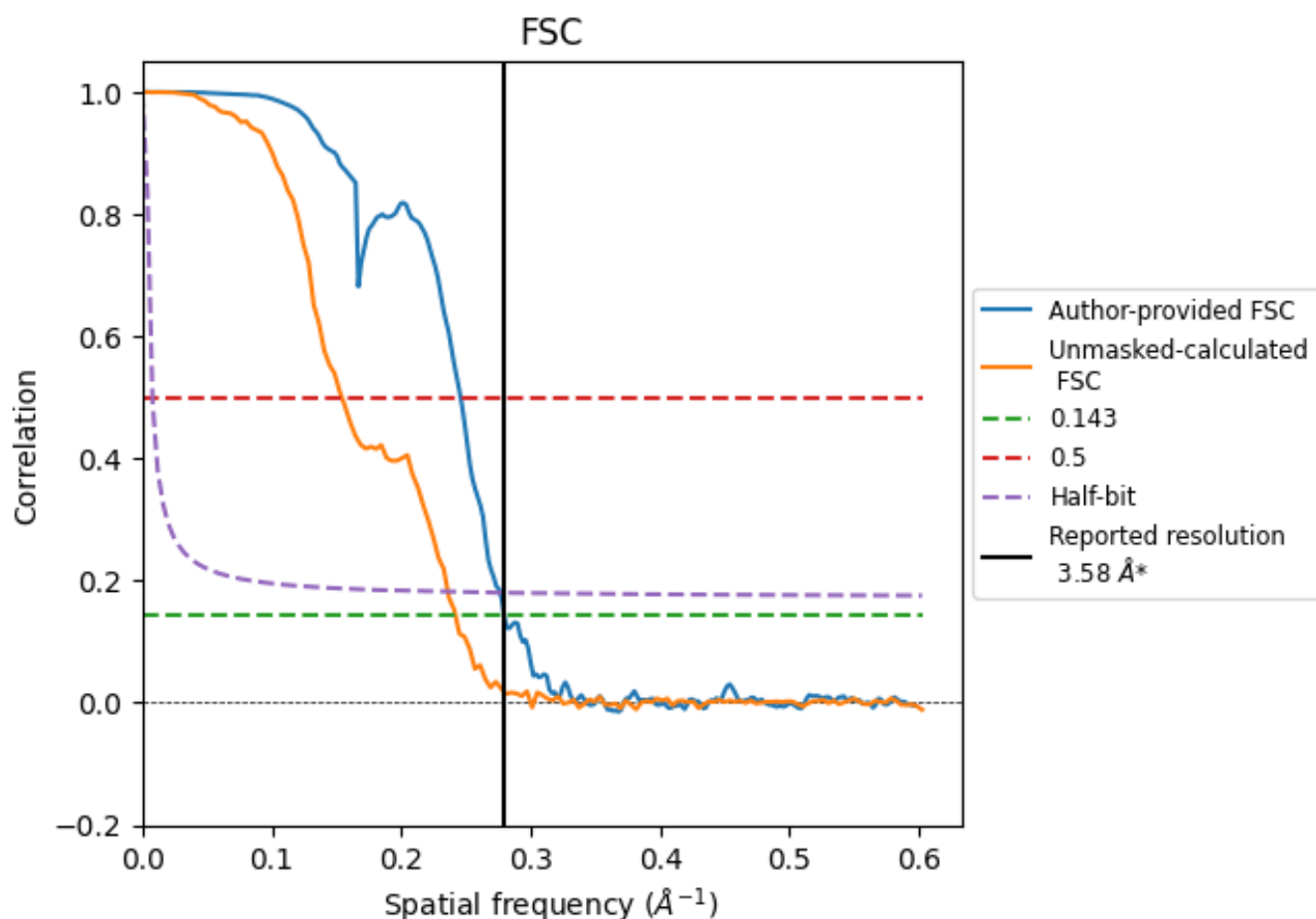


*Reported resolution corresponds to spatial frequency of 0.279 \AA^{-1}

8 Fourier-Shell correlation [i](#)

Fourier-Shell Correlation (FSC) is the most commonly used method to estimate the resolution of single-particle and subtomogram-averaged maps. The shape of the curve depends on the imposed symmetry, mask and whether or not the two 3D reconstructions used were processed from a common reference. The reported resolution is shown as a black line. A curve is displayed for the half-bit criterion in addition to lines showing the 0.143 gold standard cut-off and 0.5 cut-off.

8.1 FSC [i](#)



*Reported resolution corresponds to spatial frequency of 0.279 \AA^{-1}

8.2 Resolution estimates [i](#)

Resolution estimate (Å)	Estimation criterion (FSC cut-off)		
	0.143	0.5	Half-bit
Reported by author	3.58	-	-
Author-provided FSC curve	3.58	4.07	3.61
Unmasked-calculated*	4.13	6.49	4.24

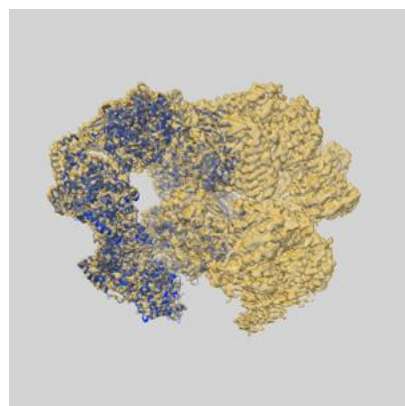
*Resolution estimate based on FSC curve calculated by comparison of deposited half-maps. The value from deposited half-maps intersecting FSC 0.143 CUT-OFF 4.13 differs from the reported value 3.58 by more than 10 %

9 Map-model fit [i](#)

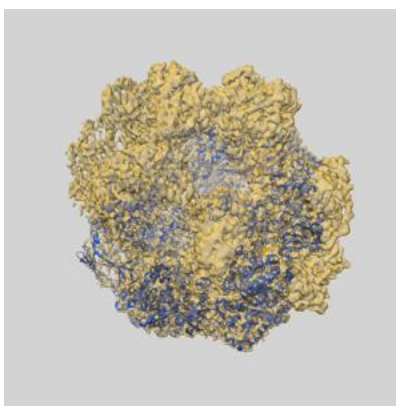
This section contains information regarding the fit between EMDB map EMD-64491 and PDB model 9UTG. Per-residue inclusion information can be found in section [3](#) on page [6](#).

9.1 Map-model overlays

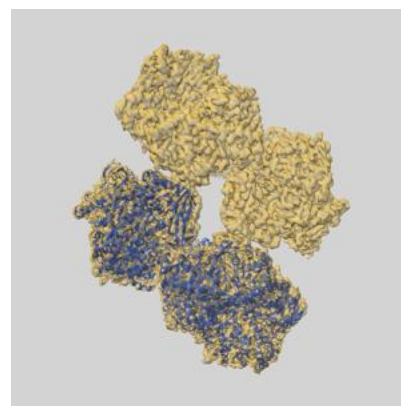
9.1.1 Map-model overlay [i](#)



X

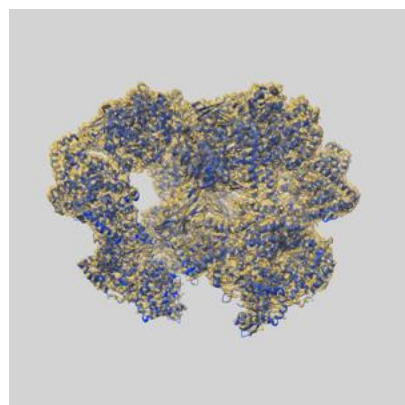


Y

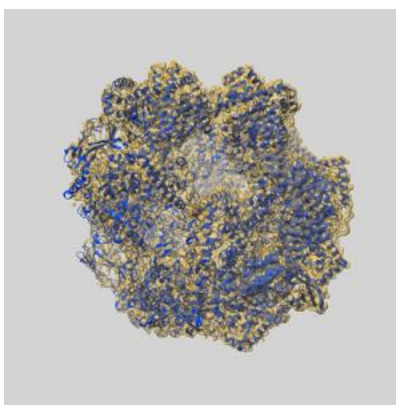


Z

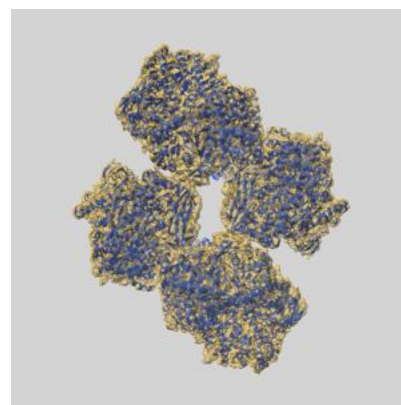
9.1.2 Map-model assembly overlay [i](#)



X



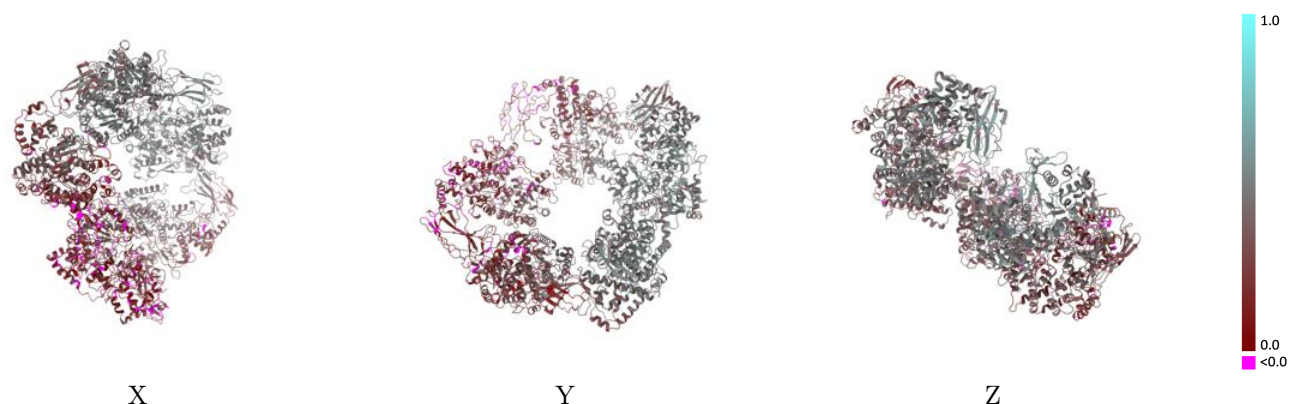
Y



Z

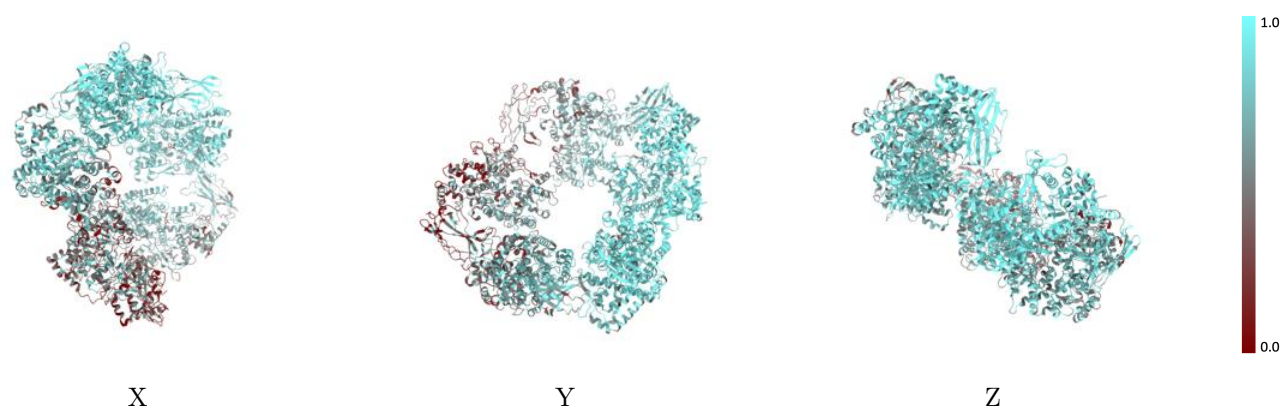
The images above show the 3D surface view of the map at the recommended contour level 0.117 at 50% transparency in yellow overlaid with a ribbon representation of the model coloured in blue. These images allow for the visual assessment of the quality of fit between the atomic model and the map.

9.2 Q-score mapped to coordinate model [i](#)



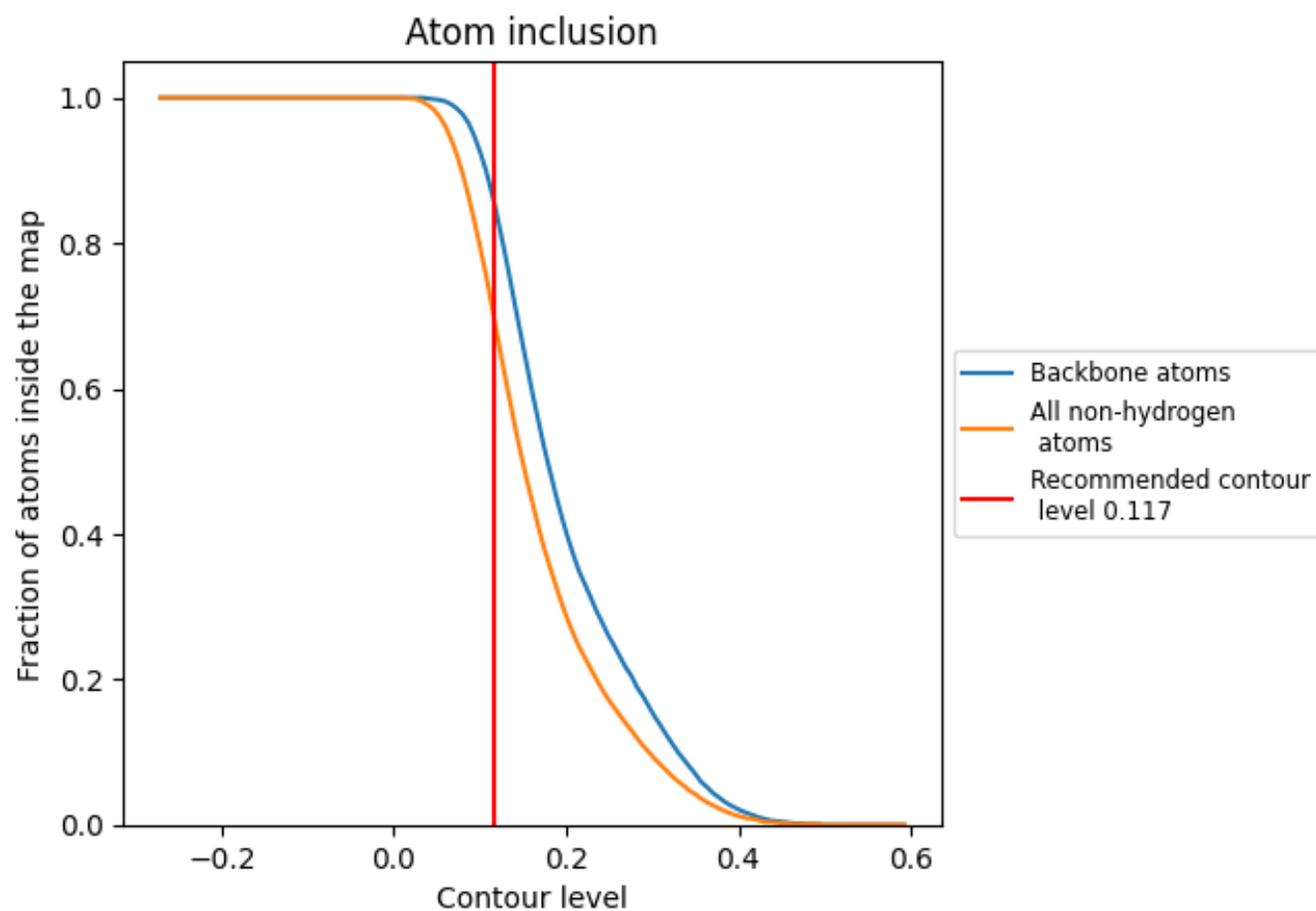
The images above show the model with each residue coloured according to its Q-score. This shows their resolvability in the map with higher Q-score values reflecting better resolvability. Please note: Q-score is calculating the resolvability of atoms, and thus high values are only expected at resolutions at which atoms can be resolved. Low Q-score values may therefore be expected for many entries.

9.3 Atom inclusion mapped to coordinate model [i](#)



The images above show the model with each residue coloured according to its atom inclusion. This shows to what extent they are inside the map at the recommended contour level (0.117).

9.4 Atom inclusion [i](#)



At the recommended contour level, 85% of all backbone atoms, 69% of all non-hydrogen atoms, are inside the map.

9.5 Map-model fit summary ⓘ

The table lists the average atom inclusion at the recommended contour level (0.117) and Q-score for the entire model and for each chain.

Chain	Atom inclusion	Q-score
All	<div></div> 0.6920	<div></div> 0.3400
A	<div></div> 0.6440	<div></div> 0.2990
B	<div></div> 0.4640	<div></div> 0.2020
C	<div></div> 0.6230	<div></div> 0.2600
D	<div></div> 0.8750	<div></div> 0.4720
E	<div></div> 0.8560	<div></div> 0.4650

