



Full wwPDB EM Validation Report ⓘ

Mar 5, 2026 – 05:09 PM UTC

PDB ID : 9UPB / pdb_00009upb
EMDB ID : EMD-64390
Title : Structure of the human TREX-2 bound to UAP56
Authors : Zhang, X.; Gong, X.; Ge, X.
Deposited on : 2025-04-28
Resolution : 3.41 Å(reported)

This is a Full wwPDB EM Validation Report for a publicly released PDB entry.

We welcome your comments at validation@mail.wwpdb.org

A user guide is available at

<https://www.wwpdb.org/validation/2017/EMValidationReportHelp>

with specific help available everywhere you see the ⓘ symbol.

The types of validation reports are described at

<http://www.wwpdb.org/validation/2017/FAQs#types>.

The following versions of software and data (see [references ⓘ](#)) were used in the production of this report:

EMDB validation analysis : 0.0.1.dev132
Mogul : 2022.3.0, CSD as543be (2022)
MolProbity : 4-5-2 with Phenix2.0
Buster-report : wwPDB partial adaption of 1.1.7 (2018)
Percentile statistics : 20250101.v01 (using entries in the PDB archive January 1st 2025)
EM percentile statistics : 202505.v01 (Using data in the EMDB archive up until May 2025)
MapQ : 1.9.13
Ideal geometry (proteins) : Engh & Huber (2001)
Ideal geometry (DNA, RNA) : Parkinson et al. (1996)
Validation Pipeline (wwPDB-VP) : 2.49

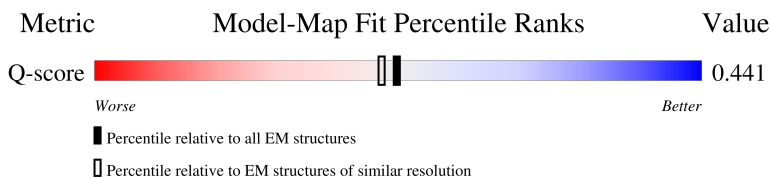
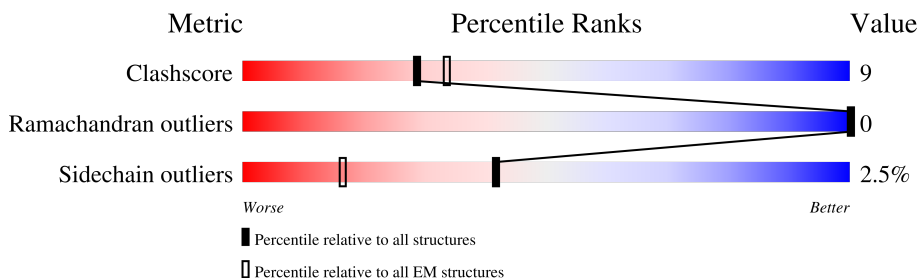
1 Overall quality at a glance

The following experimental techniques were used to determine the structure:

ELECTRON MICROSCOPY

The reported resolution of this entry is 3.41 Å.

Percentile scores (ranging between 0-100) for global validation metrics of the entry are shown in the following graphic. The table shows the number of entries on which the scores are based.



Metric	Whole archive (#Entries)	EM structures (#Entries)	Similar EM resolution (#Entries, resolution range(Å))
Clashscore	229148	23984	-
Ramachandran outliers	224038	23583	-
Sidechain outliers	223484	23102	-
Q-score	-	25397	13997 (2.91 - 3.91)

The table below summarises the geometric issues observed across the polymeric chains and their fit to the map. The red, orange, yellow and green segments of the bar indicate the fraction of residues that contain outliers for ≥ 3 , 2, 1 and 0 types of geometric quality criteria respectively. A grey segment represents the fraction of residues that are not modelled. The numeric value for each fraction is indicated below the corresponding segment, with a dot representing fractions $\leq 5\%$. The upper red bar (where present) indicates the fraction of residues that have poor fit to the EM map (all-atom inclusion $< 40\%$). The numeric value is given above the bar.

Mol	Chain	Length	Quality of chain
1	A	463	<div> <div>26%</div> <div>62%</div> <div>14%</div> <div>23%</div> </div>
2	B	426	<div> <div>30%</div> <div>74%</div> <div>16%</div> <div>9%</div> </div>
3	C	70	<div> <div>34%</div> <div>70%</div> <div>6%</div> <div>24%</div> </div>
4	D	455	<div> <div>25%</div> <div>37%</div> <div>12%</div> <div>50%</div> </div>

2 Entry composition

There are 5 unique types of molecules in this entry. The entry contains 8266 atoms, of which 0 are hydrogens and 0 are deuteriums.

In the tables below, the AltConf column contains the number of residues with at least one atom in alternate conformation and the Trace column contains the number of residues modelled with at most 2 atoms.

- Molecule 1 is a protein called Germinal-center associated nuclear protein.

Mol	Chain	Residues	Atoms					AltConf	Trace
1	A	355	Total	C	N	O	S	0	0
			2836	1784	500	529	23		

There are 42 discrepancies between the modelled and reference sequences:

Chain	Residue	Modelled	Actual	Comment	Reference
A	538	SER	-	expression tag	UNP O60318
A	539	ALA	-	expression tag	UNP O60318
A	540	TRP	-	expression tag	UNP O60318
A	541	SER	-	expression tag	UNP O60318
A	542	HIS	-	expression tag	UNP O60318
A	543	PRO	-	expression tag	UNP O60318
A	544	GLN	-	expression tag	UNP O60318
A	545	PHE	-	expression tag	UNP O60318
A	546	GLU	-	expression tag	UNP O60318
A	547	LYS	-	expression tag	UNP O60318
A	548	GLY	-	expression tag	UNP O60318
A	549	GLY	-	expression tag	UNP O60318
A	550	GLY	-	expression tag	UNP O60318
A	551	SER	-	expression tag	UNP O60318
A	552	GLY	-	expression tag	UNP O60318
A	553	GLY	-	expression tag	UNP O60318
A	554	GLY	-	expression tag	UNP O60318
A	555	SER	-	expression tag	UNP O60318
A	556	GLY	-	expression tag	UNP O60318
A	557	GLY	-	expression tag	UNP O60318
A	558	SER	-	expression tag	UNP O60318
A	559	ALA	-	expression tag	UNP O60318
A	560	TRP	-	expression tag	UNP O60318
A	561	SER	-	expression tag	UNP O60318
A	562	HIS	-	expression tag	UNP O60318
A	563	PRO	-	expression tag	UNP O60318
A	564	GLN	-	expression tag	UNP O60318
A	565	PHE	-	expression tag	UNP O60318

Continued on next page...

Continued from previous page...

Chain	Residue	Modelled	Actual	Comment	Reference
A	566	GLU	-	expression tag	UNP O60318
A	567	LYS	-	expression tag	UNP O60318
A	568	GLY	-	expression tag	UNP O60318
A	569	GLY	-	expression tag	UNP O60318
A	570	GLY	-	expression tag	UNP O60318
A	571	GLY	-	expression tag	UNP O60318
A	572	SER	-	expression tag	UNP O60318
A	573	ASP	-	expression tag	UNP O60318
A	574	GLU	-	expression tag	UNP O60318
A	575	VAL	-	expression tag	UNP O60318
A	576	ASP	-	expression tag	UNP O60318
A	577	ALA	-	expression tag	UNP O60318
A	578	ALA	-	expression tag	UNP O60318
A	579	ALA	-	expression tag	UNP O60318

- Molecule 2 is a protein called PCI domain-containing protein 2.

Mol	Chain	Residues	Atoms					AltConf	Trace
2	B	387	Total	C	N	O	S	0	0
			3140	2033	529	555	23		

There are 27 discrepancies between the modelled and reference sequences:

Chain	Residue	Modelled	Actual	Comment	Reference
B	-26	ASP	-	expression tag	UNP Q5JVF3
B	-25	TYR	-	expression tag	UNP Q5JVF3
B	-24	LYS	-	expression tag	UNP Q5JVF3
B	-23	ASP	-	expression tag	UNP Q5JVF3
B	-22	HIS	-	expression tag	UNP Q5JVF3
B	-21	ASP	-	expression tag	UNP Q5JVF3
B	-20	GLY	-	expression tag	UNP Q5JVF3
B	-19	ASP	-	expression tag	UNP Q5JVF3
B	-18	TYR	-	expression tag	UNP Q5JVF3
B	-17	LYS	-	expression tag	UNP Q5JVF3
B	-16	ASP	-	expression tag	UNP Q5JVF3
B	-15	HIS	-	expression tag	UNP Q5JVF3
B	-14	ASP	-	expression tag	UNP Q5JVF3
B	-13	ILE	-	expression tag	UNP Q5JVF3
B	-12	ASP	-	expression tag	UNP Q5JVF3
B	-11	TYR	-	expression tag	UNP Q5JVF3
B	-10	LYS	-	expression tag	UNP Q5JVF3
B	-9	ASP	-	expression tag	UNP Q5JVF3

Continued on next page...

Continued from previous page...

Chain	Residue	Modelled	Actual	Comment	Reference
B	-8	ASP	-	expression tag	UNP Q5JVF3
B	-7	ASP	-	expression tag	UNP Q5JVF3
B	-6	ASP	-	expression tag	UNP Q5JVF3
B	-5	LYS	-	expression tag	UNP Q5JVF3
B	-4	GLY	-	expression tag	UNP Q5JVF3
B	-3	SER	-	expression tag	UNP Q5JVF3
B	-2	ALA	-	expression tag	UNP Q5JVF3
B	-1	ALA	-	expression tag	UNP Q5JVF3
B	0	ALA	-	expression tag	UNP Q5JVF3

- Molecule 3 is a protein called 26S proteasome complex subunit SEM1.

Mol	Chain	Residues	Atoms					AltConf	Trace
3	C	53	Total	C	N	O	S	0	0
			451	276	69	105	1		

- Molecule 4 is a protein called Spliceosome RNA helicase DDX39B.

Mol	Chain	Residues	Atoms					AltConf	Trace
4	D	226	Total	C	N	O	S	0	0
			1808	1153	309	328	18		

There are 27 discrepancies between the modelled and reference sequences:

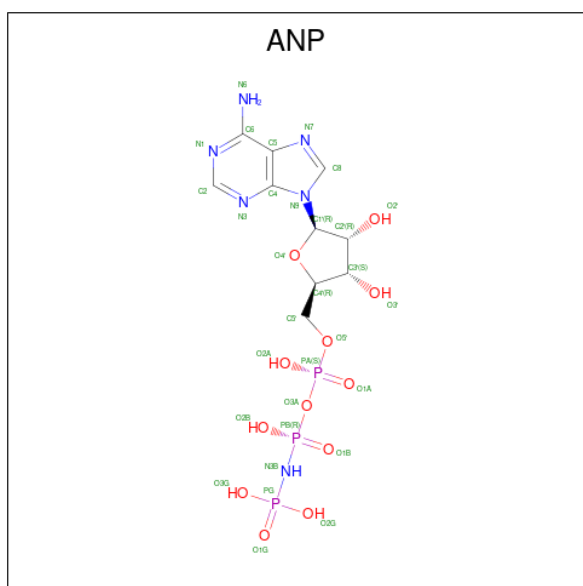
Chain	Residue	Modelled	Actual	Comment	Reference
D	-26	ASP	-	expression tag	UNP Q13838
D	-25	TYR	-	expression tag	UNP Q13838
D	-24	LYS	-	expression tag	UNP Q13838
D	-23	ASP	-	expression tag	UNP Q13838
D	-22	HIS	-	expression tag	UNP Q13838
D	-21	ASP	-	expression tag	UNP Q13838
D	-20	GLY	-	expression tag	UNP Q13838
D	-19	ASP	-	expression tag	UNP Q13838
D	-18	TYR	-	expression tag	UNP Q13838
D	-17	LYS	-	expression tag	UNP Q13838
D	-16	ASP	-	expression tag	UNP Q13838
D	-15	HIS	-	expression tag	UNP Q13838
D	-14	ASP	-	expression tag	UNP Q13838
D	-13	ILE	-	expression tag	UNP Q13838
D	-12	ASP	-	expression tag	UNP Q13838
D	-11	TYR	-	expression tag	UNP Q13838
D	-10	LYS	-	expression tag	UNP Q13838

Continued on next page...

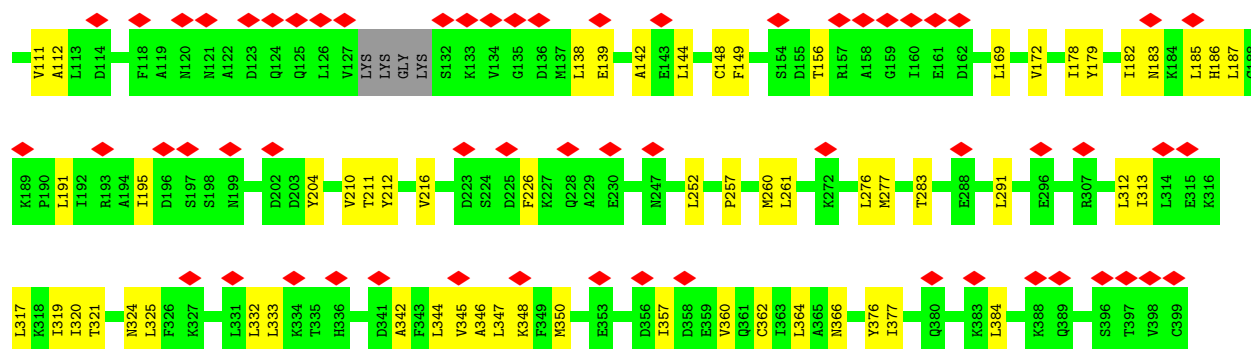
Continued from previous page...

Chain	Residue	Modelled	Actual	Comment	Reference
D	-9	ASP	-	expression tag	UNP Q13838
D	-8	ASP	-	expression tag	UNP Q13838
D	-7	ASP	-	expression tag	UNP Q13838
D	-6	ASP	-	expression tag	UNP Q13838
D	-5	LYS	-	expression tag	UNP Q13838
D	-4	GLY	-	expression tag	UNP Q13838
D	-3	SER	-	expression tag	UNP Q13838
D	-2	ALA	-	expression tag	UNP Q13838
D	-1	ALA	-	expression tag	UNP Q13838
D	0	ALA	-	expression tag	UNP Q13838

- Molecule 5 is PHOSPHOAMINOPHOSPHONIC ACID-ADENYLATE ESTER (CCD ID: ANP) (formula: $C_{10}H_{17}N_6O_{12}P_3$) (labeled as "Ligand of Interest" by depositor).



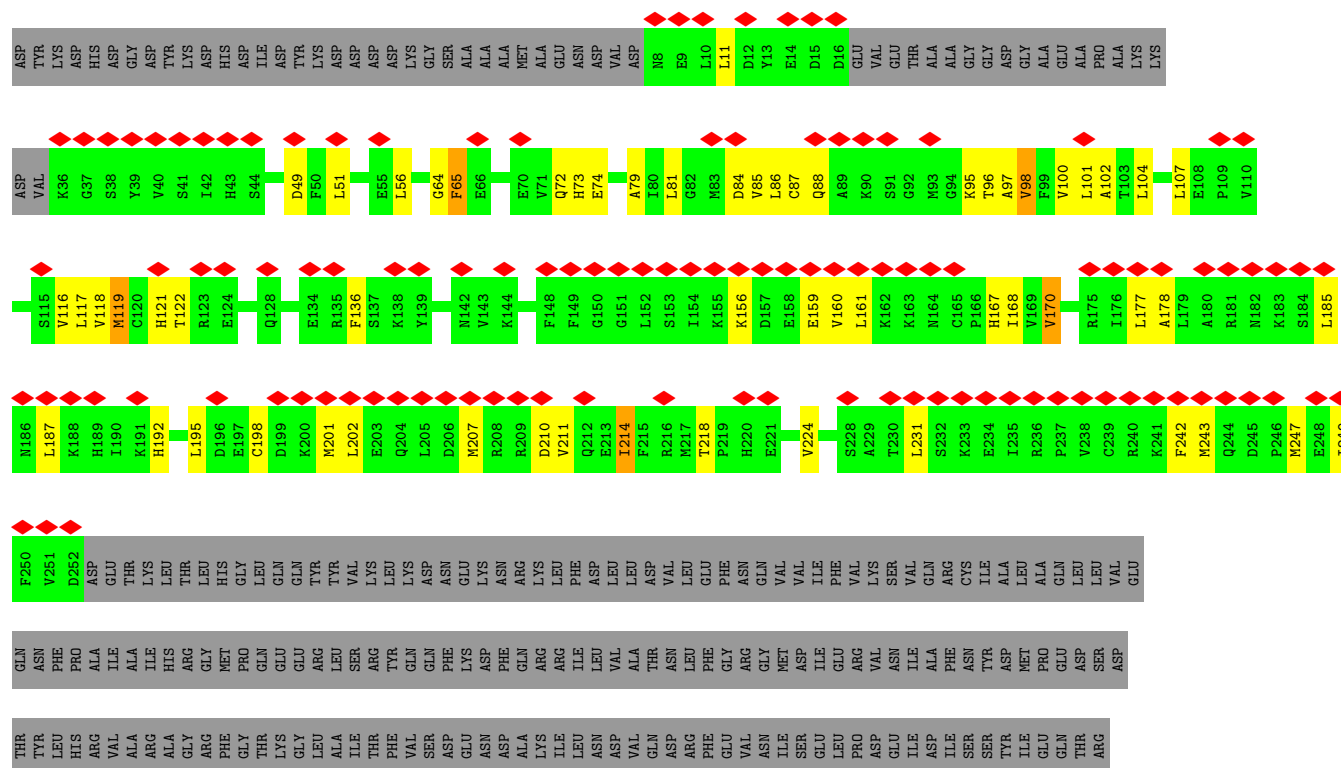
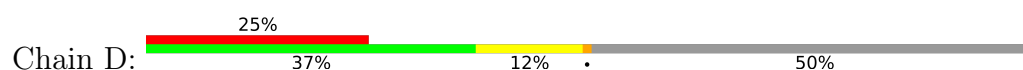
Mol	Chain	Residues	Atoms					AltConf
			Total	C	N	O	P	
5	D	1	31	10	6	12	3	0



• Molecule 3: 26S proteasome complex subunit SEM1



• Molecule 4: Spliceosome RNA helicase DDX39B



4 Experimental information

Property	Value	Source
EM reconstruction method	SINGLE PARTICLE	Depositor
Imposed symmetry	POINT, Not provided	
Number of particles used	99237	Depositor
Resolution determination method	FSC 0.143 CUT-OFF	Depositor
CTF correction method	NONE	Depositor
Microscope	FEI POLARA 300	Depositor
Voltage (kV)	300	Depositor
Electron dose ($e^-/\text{\AA}^2$)	50	Depositor
Minimum defocus (nm)	1500	Depositor
Maximum defocus (nm)	2300	Depositor
Magnification	Not provided	
Image detector	GATAN K3 BIOCONTINUUM (6k x 4k)	Depositor
Maximum map value	0.649	Depositor
Minimum map value	-0.386	Depositor
Average map value	-0.000	Depositor
Map value standard deviation	0.019	Depositor
Recommended contour level	0.152	Depositor
Map size (\AA)	209.92, 209.92, 209.92	wwPDB
Map dimensions	256, 256, 256	wwPDB
Map angles ($^\circ$)	90.0, 90.0, 90.0	wwPDB
Pixel spacing (\AA)	0.82, 0.82, 0.82	Depositor

5 Model quality [i](#)

5.1 Standard geometry [i](#)

Bond lengths and bond angles in the following residue types are not validated in this section: ANP

The Z score for a bond length (or angle) is the number of standard deviations the observed value is removed from the expected value. A bond length (or angle) with $|Z| > 5$ is considered an outlier worth inspection. RMSZ is the root-mean-square of all Z scores of the bond lengths (or angles).

Mol	Chain	Bond lengths		Bond angles	
		RMSZ	$\# Z > 5$	RMSZ	$\# Z > 5$
1	A	0.13	0/2895	0.29	0/3915
2	B	0.13	0/3209	0.28	0/4328
3	C	0.11	0/463	0.26	0/628
4	D	0.17	0/1841	0.33	0/2473
All	All	0.14	0/8408	0.29	0/11344

There are no bond length outliers.

There are no bond angle outliers.

There are no chirality outliers.

There are no planarity outliers.

5.2 Too-close contacts [i](#)

In the following table, the Non-H and H(model) columns list the number of non-hydrogen atoms and hydrogen atoms in the chain respectively. The H(added) column lists the number of hydrogen atoms added and optimized by MolProbity. The Clashes column lists the number of clashes within the asymmetric unit, whereas Symm-Clashes lists symmetry-related clashes.

Mol	Chain	Non-H	H(model)	H(added)	Clashes	Symm-Clashes
1	A	2836	0	2802	57	0
2	B	3140	0	3178	55	0
3	C	451	0	356	3	0
4	D	1808	0	1839	50	0
5	D	31	0	13	1	0
All	All	8266	0	8188	155	0

The all-atom clashscore is defined as the number of clashes found per 1000 atoms (including hydrogen atoms). The all-atom clashscore for this structure is 9.

All (155) close contacts within the same asymmetric unit are listed below, sorted by their clash magnitude.

Atom-1	Atom-2	Interatomic distance (Å)	Clash overlap (Å)
4:D:117:LEU:HD21	4:D:214:ILE:HD11	1.57	0.86
2:B:172:VAL:HG21	2:B:195:ILE:HD11	1.64	0.78
1:A:812:LEU:HD22	1:A:870:LEU:HD21	1.67	0.75
4:D:86:LEU:HD11	4:D:231:LEU:HD11	1.68	0.75
2:B:85:THR:HG23	2:B:144:LEU:HD21	1.67	0.75
4:D:56:LEU:HD21	4:D:101:LEU:CD2	2.19	0.72
2:B:260:MET:HE2	2:B:283:THR:HG22	1.72	0.71
2:B:364:LEU:HD21	2:B:384:LEU:HD22	1.73	0.69
1:A:745:VAL:HG22	1:A:789:MET:HG2	1.73	0.68
2:B:257:PRO:O	2:B:261:LEU:HD13	1.95	0.66
2:B:25:CYS:O	2:B:29:VAL:HG23	1.96	0.66
2:B:325:LEU:HD21	2:B:350:MET:HE1	1.78	0.66
4:D:156:LYS:O	4:D:160:VAL:HG23	1.96	0.65
2:B:325:LEU:CD2	2:B:350:MET:HE1	2.27	0.65
2:B:183:ASN:O	2:B:183:ASN:OD1	2.16	0.64
4:D:56:LEU:HD21	4:D:101:LEU:HD23	1.83	0.61
4:D:177:LEU:C	4:D:177:LEU:HD23	2.25	0.61
1:A:697:LEU:CD1	1:A:730:ILE:HG13	2.30	0.60
4:D:74:GLU:O	4:D:247:MET:HE1	2.01	0.60
4:D:249:ILE:HD12	4:D:249:ILE:H	1.66	0.60
4:D:177:LEU:HD13	4:D:210:ASP:OD2	2.01	0.59
4:D:116:VAL:HG22	4:D:192:HIS:HB2	1.85	0.58
1:A:697:LEU:HD11	1:A:730:ILE:HG13	1.86	0.58
4:D:247:MET:HE3	4:D:249:ILE:HD11	1.85	0.58
2:B:291:LEU:HD22	2:B:321:THR:HG22	1.85	0.58
2:B:260:MET:CE	2:B:283:THR:HG22	2.34	0.57
1:A:650:GLU:HA	1:A:655:LEU:HD11	1.85	0.57
1:A:867:ALA:HB1	1:A:954:ILE:HD12	1.87	0.57
1:A:812:LEU:HD21	1:A:840:ALA:HA	1.87	0.57
4:D:167:HIS:C	4:D:168:ILE:HD12	2.30	0.56
4:D:104:LEU:HD12	4:D:104:LEU:O	2.04	0.56
4:D:119:MET:HE2	4:D:195:LEU:HD21	1.86	0.56
2:B:53:VAL:HG13	2:B:54:LEU:HD22	1.87	0.56
4:D:118:VAL:CG1	4:D:170:VAL:HG12	2.36	0.56
1:A:727:THR:O	1:A:730:ILE:HG22	2.06	0.55
1:A:707:GLN:OE1	1:A:974:VAL:HG13	2.07	0.55
2:B:65:HIS:N	2:B:87:ILE:HD11	2.22	0.54
1:A:789:MET:O	1:A:793:LEU:HD23	2.06	0.54
1:A:821:LEU:HD22	2:B:312:LEU:HB3	1.89	0.54
1:A:890:THR:O	1:A:890:THR:HG23	2.08	0.54

Continued on next page...

Continued from previous page...

Atom-1	Atom-2	Interatomic distance (Å)	Clash overlap (Å)
2:B:139:GLU:HG2	4:D:51:LEU:HD23	1.90	0.53
1:A:821:LEU:HD21	1:A:844:PHE:CE2	2.43	0.53
2:B:364:LEU:HB3	2:B:377:ILE:HD11	1.89	0.53
1:A:963:GLY:HA3	1:A:971:LEU:HD11	1.90	0.53
1:A:658:PHE:HB3	1:A:708:ILE:HD11	1.92	0.52
1:A:760:HIS:HB2	1:A:868:CYS:HB3	1.90	0.52
1:A:706:THR:O	1:A:706:THR:HG22	2.09	0.52
2:B:291:LEU:HD22	2:B:321:THR:CG2	2.40	0.52
1:A:891:VAL:HG23	2:B:376:TYR:CD1	2.45	0.51
2:B:252:LEU:HD23	2:B:276:LEU:HD12	1.92	0.51
2:B:277:MET:HE2	2:B:277:MET:HA	1.92	0.51
4:D:72:GLN:HG3	4:D:98:VAL:HG23	1.92	0.51
4:D:107:LEU:HD22	4:D:168:ILE:HD11	1.93	0.51
2:B:261:LEU:HD12	2:B:317:LEU:CD2	2.41	0.51
1:A:867:ALA:HB1	1:A:954:ILE:CD1	2.42	0.50
2:B:92:LEU:HD21	2:B:148:CYS:SG	2.51	0.50
4:D:168:ILE:HG22	4:D:170:VAL:HG13	1.92	0.50
1:A:890:THR:HG21	1:A:936:ARG:HB2	1.94	0.49
4:D:224:VAL:HG22	4:D:224:VAL:O	2.12	0.49
2:B:226:PHE:HZ	2:B:313:ILE:HD11	1.77	0.49
1:A:647:TYR:O	1:A:651:THR:HG23	2.12	0.49
2:B:85:THR:CG2	2:B:144:LEU:HD21	2.38	0.49
1:A:640:MET:HE3	1:A:700:THR:HG23	1.92	0.49
2:B:357:ILE:HD12	2:B:357:ILE:H	1.77	0.49
4:D:117:LEU:HD22	4:D:187:LEU:HD22	1.94	0.49
1:A:960:VAL:HG21	1:A:964:GLU:HG2	1.95	0.49
2:B:179:TYR:HE2	2:B:191:LEU:HD11	1.77	0.49
1:A:658:PHE:CB	1:A:708:ILE:HD11	2.43	0.49
2:B:111:VAL:HG23	2:B:112:ALA:N	2.28	0.48
1:A:640:MET:HE2	1:A:673:VAL:HG22	1.96	0.48
2:B:61:MET:HG3	2:B:62:PHE:HD1	1.79	0.48
2:B:61:MET:HG3	2:B:62:PHE:CD1	2.49	0.48
2:B:364:LEU:CD2	2:B:384:LEU:HD22	2.43	0.48
2:B:347:LEU:HD12	2:B:360:VAL:HG22	1.96	0.47
2:B:142:ALA:HB2	2:B:178:ILE:HG21	1.95	0.47
4:D:121:HIS:ND1	4:D:122:THR:HG22	2.28	0.47
4:D:95:LYS:O	4:D:98:VAL:HB	2.14	0.47
2:B:252:LEU:CD2	2:B:276:LEU:HD12	2.44	0.47
1:A:960:VAL:HG11	1:A:964:GLU:CG	2.45	0.47
1:A:864:TYR:O	1:A:867:ALA:HB3	2.15	0.47
1:A:658:PHE:CG	1:A:708:ILE:HD11	2.50	0.47

Continued on next page...

Continued from previous page...

Atom-1	Atom-2	Interatomic distance (Å)	Clash overlap (Å)
1:A:899:PHE:O	1:A:932:VAL:HG12	2.15	0.47
2:B:261:LEU:HD12	2:B:317:LEU:HD21	1.97	0.47
1:A:748:ILE:HG23	1:A:786:LEU:HD21	1.98	0.46
1:A:935:ASN:OD1	1:A:935:ASN:C	2.58	0.46
4:D:249:ILE:HD12	4:D:249:ILE:N	2.31	0.46
2:B:332:LEU:HB3	3:C:67:MET:HE2	1.97	0.46
2:B:333:LEU:HD21	3:C:60:LEU:HD23	1.96	0.46
1:A:855:PHE:HE1	1:A:870:LEU:HD22	1.81	0.46
4:D:224:VAL:HG11	4:D:243:MET:HA	1.98	0.45
2:B:317:LEU:HD23	2:B:320:ILE:HD13	1.98	0.45
4:D:119:MET:HE1	4:D:211:VAL:HG22	1.98	0.45
1:A:741:ASP:O	1:A:745:VAL:HG23	2.16	0.45
4:D:11:LEU:HD12	4:D:11:LEU:H	1.82	0.45
4:D:159:GLU:C	4:D:159:GLU:OE2	2.60	0.45
1:A:737:GLN:HG2	1:A:739:LEU:HD12	1.99	0.45
1:A:813:LEU:HD23	1:A:813:LEU:O	2.16	0.45
1:A:823:GLU:O	1:A:827:PHE:CD2	2.70	0.45
4:D:79:ALA:HB2	4:D:85:VAL:HG21	1.99	0.45
2:B:226:PHE:CZ	2:B:313:ILE:HD11	2.52	0.44
1:A:901:LEU:O	1:A:904:VAL:HG22	2.18	0.44
2:B:211:THR:HG23	3:C:19:PHE:CD1	2.53	0.44
2:B:344:LEU:HD21	2:B:348:LYS:HE3	2.00	0.44
2:B:325:LEU:HD22	2:B:350:MET:HE1	2.00	0.44
4:D:119:MET:SD	4:D:214:ILE:HD13	2.58	0.44
1:A:886:ASN:HA	1:A:934:LEU:HD22	2.00	0.44
2:B:10:LEU:HB3	2:B:53:VAL:HG11	2.00	0.44
4:D:88:GLN:HB2	4:D:231:LEU:HD12	2.00	0.44
1:A:745:VAL:HG22	1:A:789:MET:CG	2.46	0.44
1:A:647:TYR:HA	1:A:650:GLU:HG2	1.99	0.43
4:D:119:MET:CE	4:D:211:VAL:HG22	2.49	0.43
4:D:79:ALA:HB1	4:D:102:ALA:CB	2.49	0.43
1:A:821:LEU:HD21	1:A:844:PHE:CD2	2.53	0.43
4:D:100:VAL:HG12	4:D:136:PHE:HD2	1.84	0.43
4:D:86:LEU:HD12	4:D:87:CYS:N	2.34	0.42
1:A:812:LEU:HD22	1:A:870:LEU:CD2	2.43	0.42
2:B:85:THR:HG23	2:B:144:LEU:CD2	2.42	0.42
4:D:161:LEU:HD21	4:D:185:LEU:HD13	2.01	0.42
4:D:202:LEU:HD11	4:D:242:PHE:HE1	1.85	0.42
1:A:839:PHE:CZ	1:A:862:ALA:HB2	2.55	0.42
1:A:802:SER:O	1:A:803:GLU:C	2.62	0.42
1:A:960:VAL:HG11	1:A:964:GLU:HG2	2.01	0.42

Continued on next page...

Continued from previous page...

Atom-1	Atom-2	Interatomic distance (Å)	Clash overlap (Å)
4:D:168:ILE:CG2	4:D:170:VAL:HG13	2.50	0.42
1:A:658:PHE:CE2	1:A:719:TRP:HA	2.54	0.42
1:A:803:GLU:O	1:A:804:ALA:C	2.62	0.42
1:A:822:ARG:CZ	2:B:185:LEU:HD12	2.49	0.42
1:A:964:GLU:N	1:A:971:LEU:HD21	2.35	0.42
2:B:319:ILE:HD12	2:B:319:ILE:N	2.35	0.42
4:D:65:PHE:CZ	5:D:501:ANP:H2'	2.55	0.41
1:A:736:GLN:NE2	4:D:64:GLY:HA2	2.34	0.41
2:B:346:ALA:O	2:B:350:MET:HE2	2.21	0.41
1:A:932:VAL:HG22	1:A:933:GLU:N	2.35	0.41
4:D:65:PHE:HE2	4:D:97:ALA:HB1	1.86	0.41
2:B:178:ILE:O	2:B:182:ILE:HG12	2.21	0.41
2:B:212:TYR:CE1	2:B:216:VAL:HG21	2.55	0.41
2:B:149:PHE:HD2	2:B:149:PHE:O	2.03	0.41
2:B:169:LEU:HD13	2:B:204:TYR:CD2	2.56	0.41
2:B:187:LEU:HD11	4:D:49:ASP:O	2.20	0.41
4:D:201:MET:HA	4:D:207:MET:HE3	2.01	0.41
1:A:804:ALA:O	1:A:805:GLU:C	2.62	0.41
1:A:815:LEU:HD12	1:A:873:TYR:CE2	2.56	0.41
2:B:191:LEU:HD21	4:D:81:LEU:HD21	2.01	0.41
4:D:79:ALA:HB1	4:D:102:ALA:HB1	2.02	0.41
4:D:86:LEU:HB2	4:D:243:MET:HE1	2.03	0.41
4:D:177:LEU:HD23	4:D:178:ALA:N	2.36	0.41
2:B:88:VAL:O	2:B:92:LEU:HD23	2.20	0.41
4:D:56:LEU:HD23	4:D:56:LEU:C	2.46	0.41
1:A:640:MET:O	1:A:640:MET:HG3	2.21	0.41
2:B:53:VAL:HG13	2:B:54:LEU:N	2.35	0.40
4:D:96:THR:O	4:D:100:VAL:HG23	2.21	0.40
1:A:719:TRP:O	1:A:723:VAL:HG12	2.21	0.40
1:A:909:LEU:O	1:A:909:LEU:HD23	2.21	0.40
2:B:342:ALA:O	2:B:345:VAL:HG12	2.21	0.40
1:A:757:HIS:CD2	1:A:962:VAL:HG13	2.56	0.40
4:D:198:CYS:HA	4:D:201:MET:HE3	2.03	0.40

There are no symmetry-related clashes.

5.3 Torsion angles

5.3.1 Protein backbone

In the following table, the Percentiles column shows the percent Ramachandran outliers of the chain as a percentile score with respect to all PDB entries followed by that with respect to all EM entries.

The Analysed column shows the number of residues for which the backbone conformation was analysed, and the total number of residues.

Mol	Chain	Analysed	Favoured	Allowed	Outliers	Percentiles	
1	A	353/463 (76%)	328 (93%)	25 (7%)	0	100	100
2	B	381/426 (89%)	369 (97%)	12 (3%)	0	100	100
3	C	51/70 (73%)	43 (84%)	8 (16%)	0	100	100
4	D	222/455 (49%)	203 (91%)	19 (9%)	0	100	100
All	All	1007/1414 (71%)	943 (94%)	64 (6%)	0	100	100

There are no Ramachandran outliers to report.

5.3.2 Protein sidechains

In the following table, the Percentiles column shows the percent sidechain outliers of the chain as a percentile score with respect to all PDB entries followed by that with respect to all EM entries.

The Analysed column shows the number of residues for which the sidechain conformation was analysed, and the total number of residues.

Mol	Chain	Analysed	Rotameric	Outliers	Percentiles	
1	A	320/402 (80%)	315 (98%)	5 (2%)	55	68
2	B	344/375 (92%)	335 (97%)	9 (3%)	40	60
3	C	47/63 (75%)	46 (98%)	1 (2%)	47	64
4	D	205/403 (51%)	197 (96%)	8 (4%)	28	53
All	All	916/1243 (74%)	893 (98%)	23 (2%)	42	61

All (23) residues with a non-rotameric sidechain are listed below:

Mol	Chain	Res	Type
1	A	673	VAL
1	A	708	ILE

Continued on next page...

Continued from previous page...

Mol	Chain	Res	Type
1	A	721	ASP
1	A	743	LEU
1	A	813	LEU
2	B	54	LEU
2	B	61	MET
2	B	138	LEU
2	B	156	THR
2	B	186	HIS
2	B	210	VAL
2	B	324	ASN
2	B	362	CYS
2	B	366	ASN
3	C	40	GLU
4	D	65	PHE
4	D	73	HIS
4	D	84	ASP
4	D	98	VAL
4	D	119	MET
4	D	170	VAL
4	D	214	ILE
4	D	218	THR

Sometimes sidechains can be flipped to improve hydrogen bonding and reduce clashes. All (5) such sidechains are listed below:

Mol	Chain	Res	Type
1	A	736	GLN
2	B	183	ASN
2	B	245	GLN
2	B	366	ASN
2	B	379	HIS

5.3.3 RNA ⓘ

There are no RNA molecules in this entry.

5.4 Non-standard residues in protein, DNA, RNA chains ⓘ

There are no non-standard protein/DNA/RNA residues in this entry.

5.5 Carbohydrates [i](#)

There are no oligosaccharides in this entry.

5.6 Ligand geometry [i](#)

1 ligand is modelled in this entry.

In the following table, the Counts columns list the number of bonds (or angles) for which Mogul statistics could be retrieved, the number of bonds (or angles) that are observed in the model and the number of bonds (or angles) that are defined in the Chemical Component Dictionary. The Link column lists molecule types, if any, to which the group is linked. The Z score for a bond length (or angle) is the number of standard deviations the observed value is removed from the expected value. A bond length (or angle) with $|Z| > 2$ is considered an outlier worth inspection. RMSZ is the root-mean-square of all Z scores of the bond lengths (or angles).

Mol	Type	Chain	Res	Link	Bond lengths			Bond angles		
					Counts	RMSZ	$\# Z > 2$	Counts	RMSZ	$\# Z > 2$
5	ANP	D	501	-	33,33,33	2.27	5 (15%)	45,52,52	1.23	3 (6%)

In the following table, the Chirals column lists the number of chiral outliers, the number of chiral centers analysed, the number of these observed in the model and the number defined in the Chemical Component Dictionary. Similar counts are reported in the Torsion and Rings columns. '-' means no outliers of that kind were identified.

Mol	Type	Chain	Res	Link	Chirals	Torsions	Rings
5	ANP	D	501	-	-	3/18/38/38	0/3/3/3

All (5) bond length outliers are listed below:

Mol	Chain	Res	Type	Atoms	Z	Observed(Å)	Ideal(Å)
5	D	501	ANP	PB-O3A	8.71	1.69	1.59
5	D	501	ANP	PG-N3B	6.19	1.79	1.63
5	D	501	ANP	PG-O1G	4.75	1.53	1.46
5	D	501	ANP	PB-O1B	2.71	1.50	1.46
5	D	501	ANP	PB-O2B	-2.16	1.51	1.56

All (3) bond angle outliers are listed below:

Mol	Chain	Res	Type	Atoms	Z	Observed(°)	Ideal(°)
5	D	501	ANP	O2B-PB-O1B	5.17	120.95	109.87
5	D	501	ANP	O1G-PG-N3B	-3.98	105.90	111.77
5	D	501	ANP	O2G-PG-O3G	2.59	114.54	107.59

There are no chirality outliers.

All (3) torsion outliers are listed below:

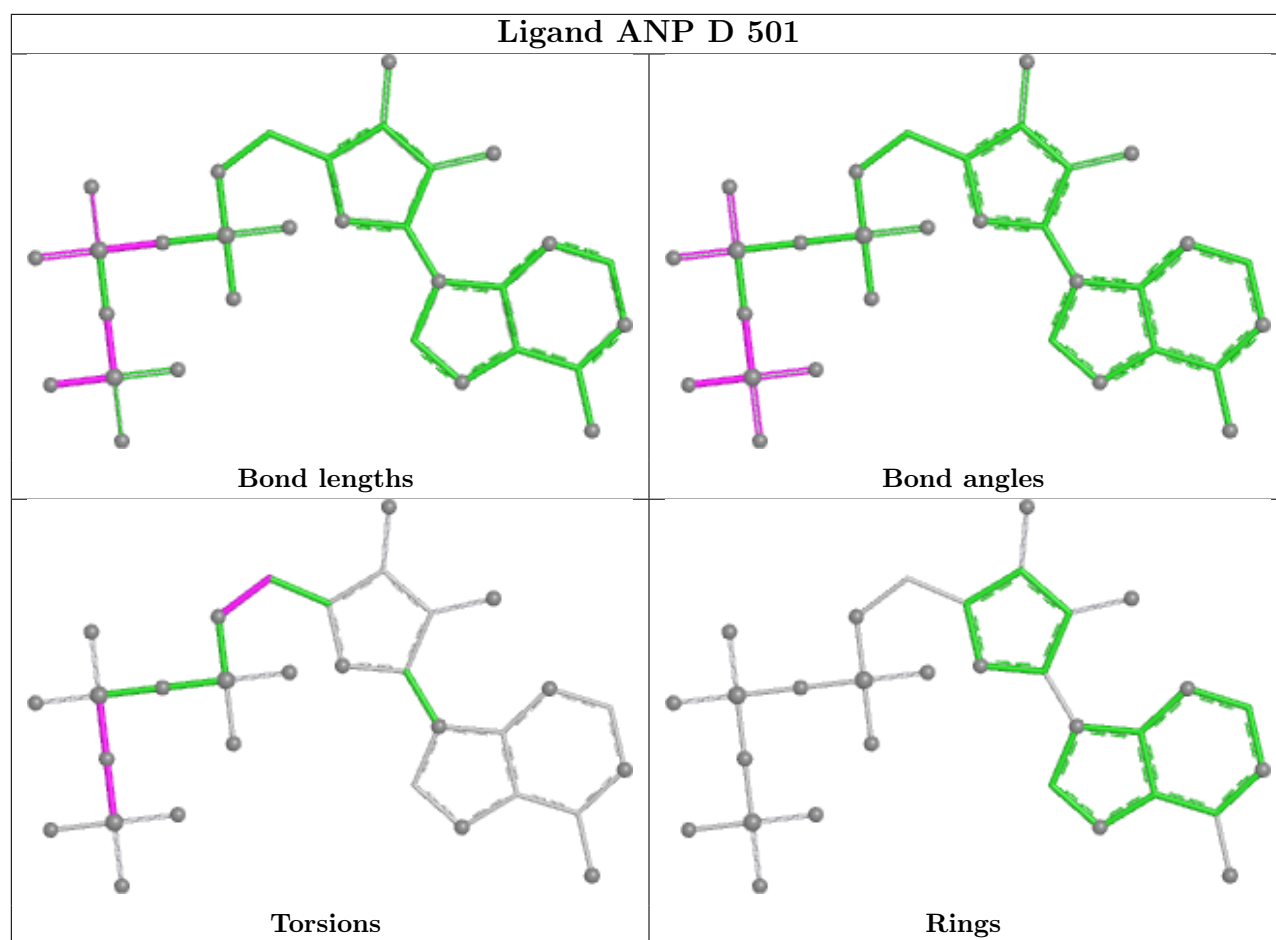
Mol	Chain	Res	Type	Atoms
5	D	501	ANP	PB-N3B-PG-O1G
5	D	501	ANP	PG-N3B-PB-O1B
5	D	501	ANP	C4'-C5'-O5'-PA

There are no ring outliers.

1 monomer is involved in 1 short contact:

Mol	Chain	Res	Type	Clashes	Symm-Clashes
5	D	501	ANP	1	0

The following is a two-dimensional graphical depiction of Mogul quality analysis of bond lengths, bond angles, torsion angles, and ring geometry for all instances of the Ligand of Interest. In addition, ligands with molecular weight > 250 and outliers as shown on the validation Tables will also be included. For torsion angles, if less than 5% of the Mogul distribution of torsion angles is within 10 degrees of the torsion angle in question, then that torsion angle is considered an outlier. Any bond that is central to one or more torsion angles identified as an outlier by Mogul will be highlighted in the graph. For rings, the root-mean-square deviation (RMSD) between the ring in question and similar rings identified by Mogul is calculated over all ring torsion angles. If the average RMSD is greater than 60 degrees and the minimal RMSD between the ring in question and any Mogul-identified rings is also greater than 60 degrees, then that ring is considered an outlier. The outliers are highlighted in purple. The color gray indicates Mogul did not find sufficient equivalents in the CSD to analyse the geometry.



5.7 Other polymers [i](#)

There are no such residues in this entry.

5.8 Polymer linkage issues [i](#)

There are no chain breaks in this entry.

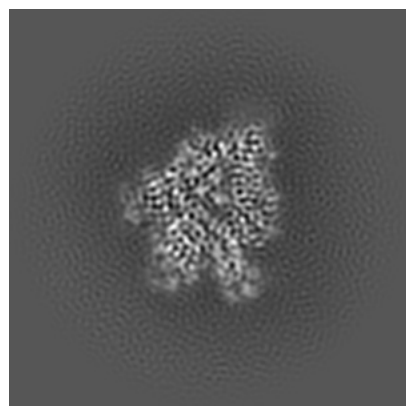
6 Map visualisation [i](#)

This section contains visualisations of the EMDB entry EMD-64390. These allow visual inspection of the internal detail of the map and identification of artifacts.

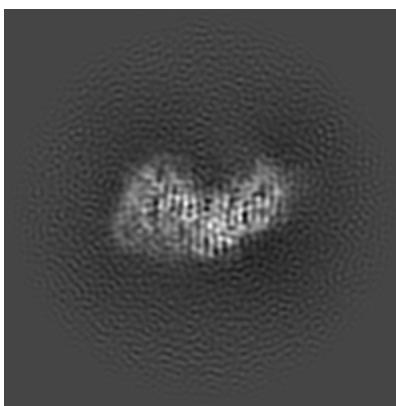
Images derived from a raw map, generated by summing the deposited half-maps, are presented below the corresponding image components of the primary map to allow further visual inspection and comparison with those of the primary map.

6.1 Orthogonal projections [i](#)

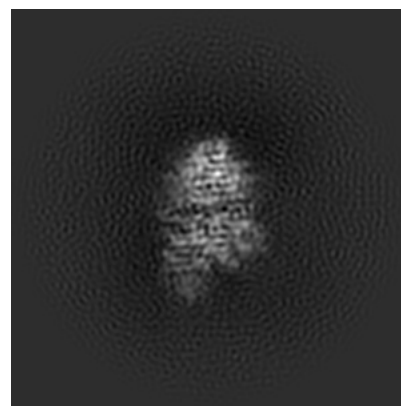
6.1.1 Primary map



X

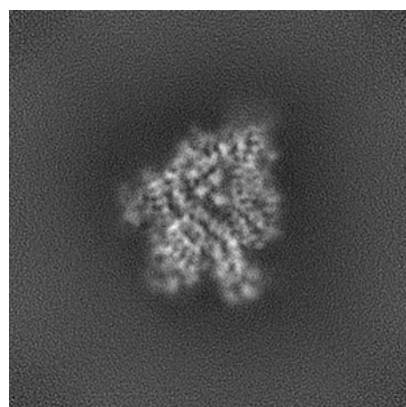


Y

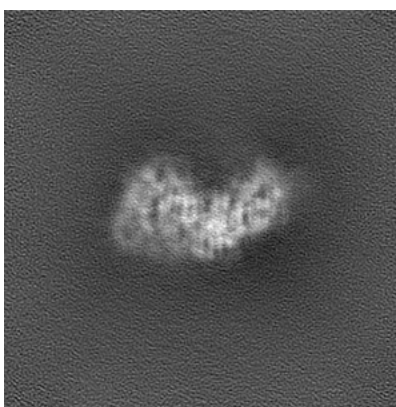


Z

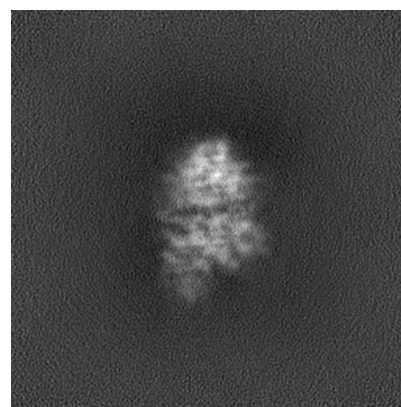
6.1.2 Raw map



X



Y

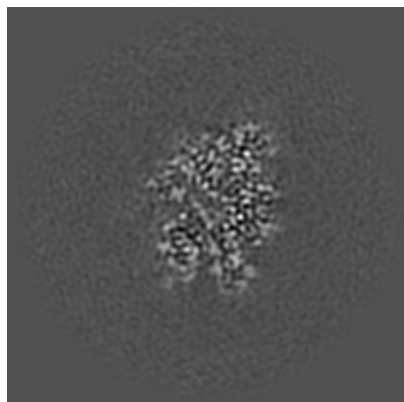


Z

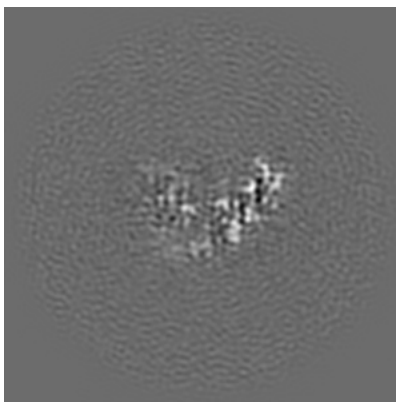
The images above show the map projected in three orthogonal directions.

6.2 Central slices [i](#)

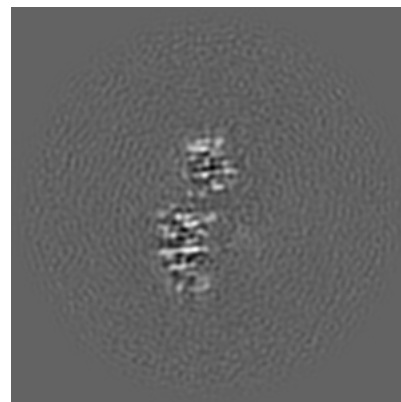
6.2.1 Primary map



X Index: 128

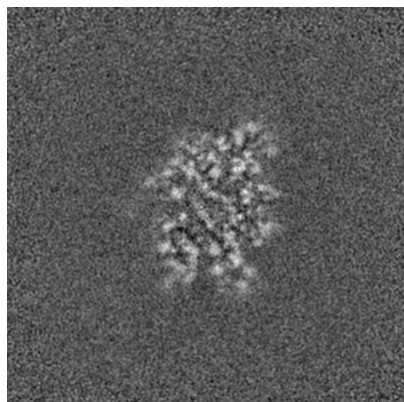


Y Index: 128

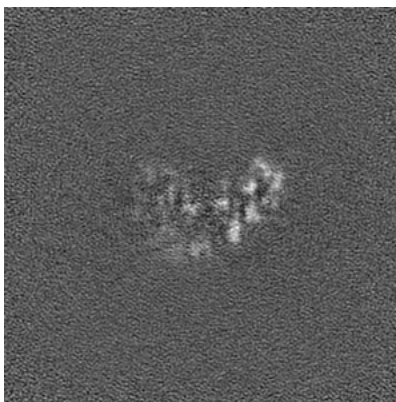


Z Index: 128

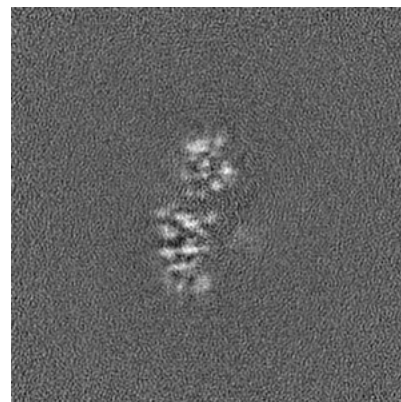
6.2.2 Raw map



X Index: 128



Y Index: 128

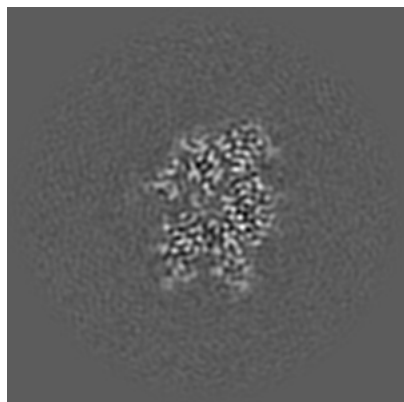


Z Index: 128

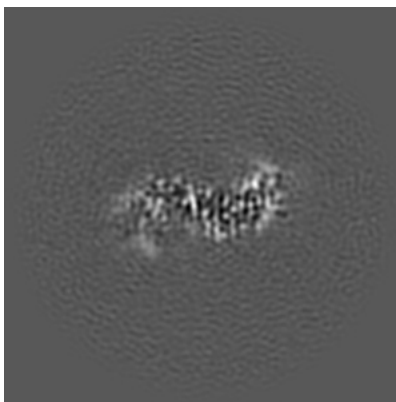
The images above show central slices of the map in three orthogonal directions.

6.3 Largest variance slices [i](#)

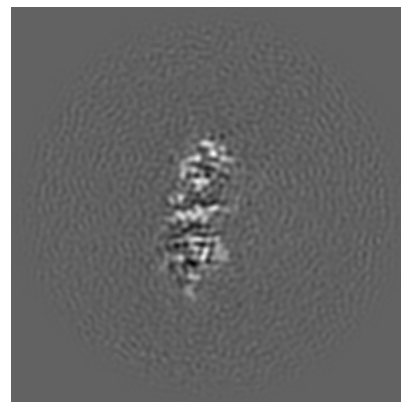
6.3.1 Primary map



X Index: 130

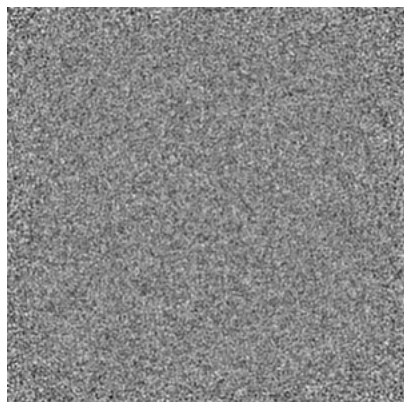


Y Index: 148

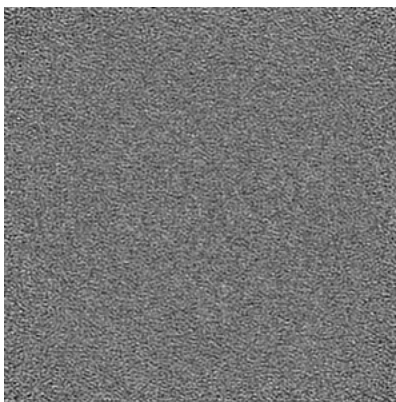


Z Index: 140

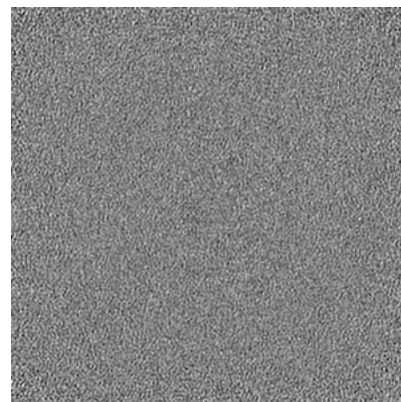
6.3.2 Raw map



X Index: 0



Y Index: 0

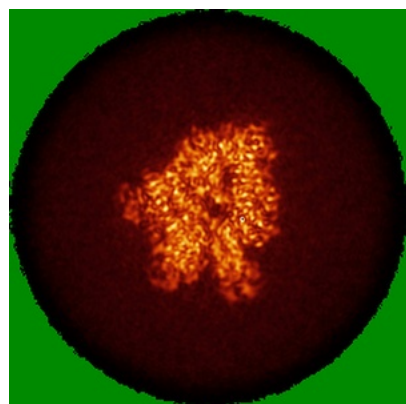


Z Index: 0

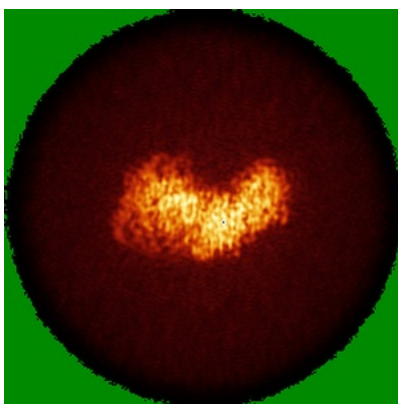
The images above show the largest variance slices of the map in three orthogonal directions.

6.4 Orthogonal standard-deviation projections (False-color) [i](#)

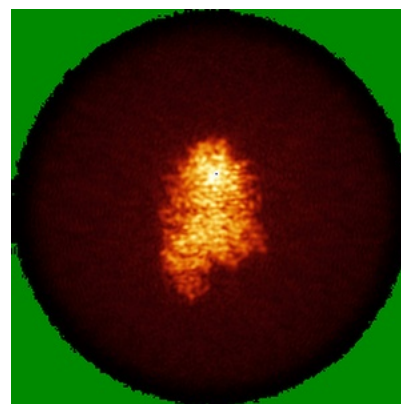
6.4.1 Primary map



X

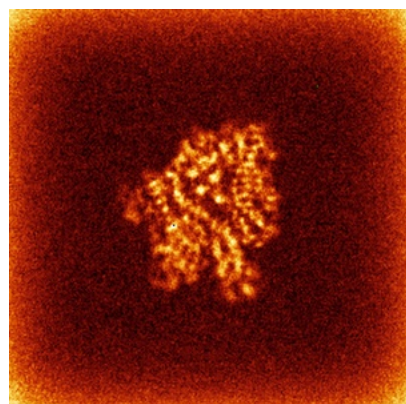


Y

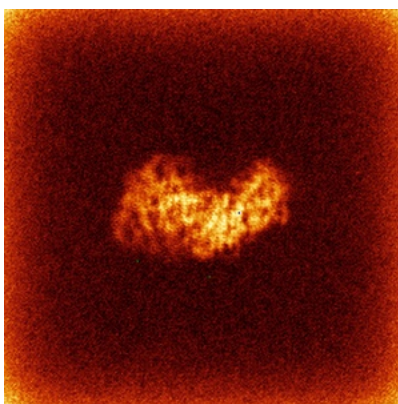


Z

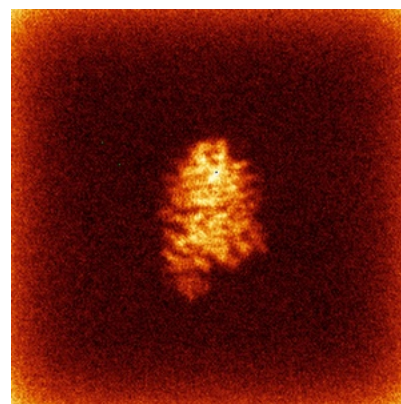
6.4.2 Raw map



X



Y



Z

The images above show the map standard deviation projections with false color in three orthogonal directions. Minimum values are shown in green, max in blue, and dark to light orange shades represent small to large values respectively.

6.5 Orthogonal surface views [i](#)

6.5.1 Primary map



The images above show the 3D surface view of the map at the recommended contour level 0.152. These images, in conjunction with the slice images, may facilitate assessment of whether an appropriate contour level has been provided.

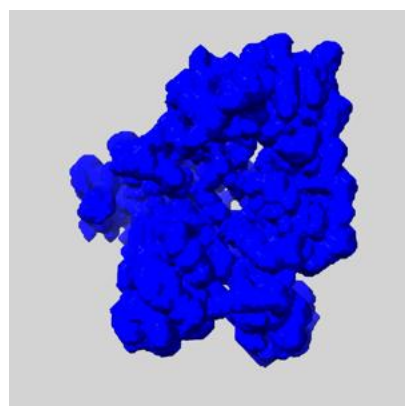
6.6 Mask visualisation [i](#)

This section shows the 3D surface view of the primary map at 50% transparency overlaid with the specified mask at 0% transparency

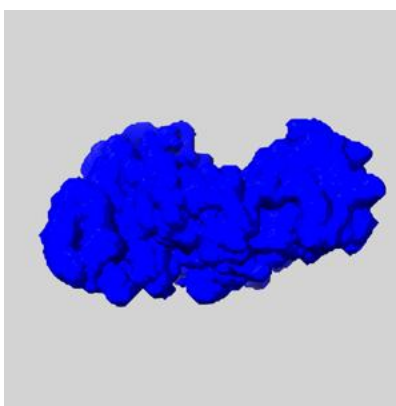
A mask typically either:

- Encompasses the whole structure
- Separates out a domain, a functional unit, a monomer or an area of interest from a larger structure

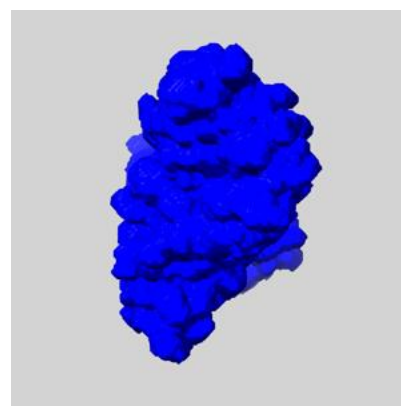
6.6.1 emd_64390_msk_1.map [i](#)



X



Y

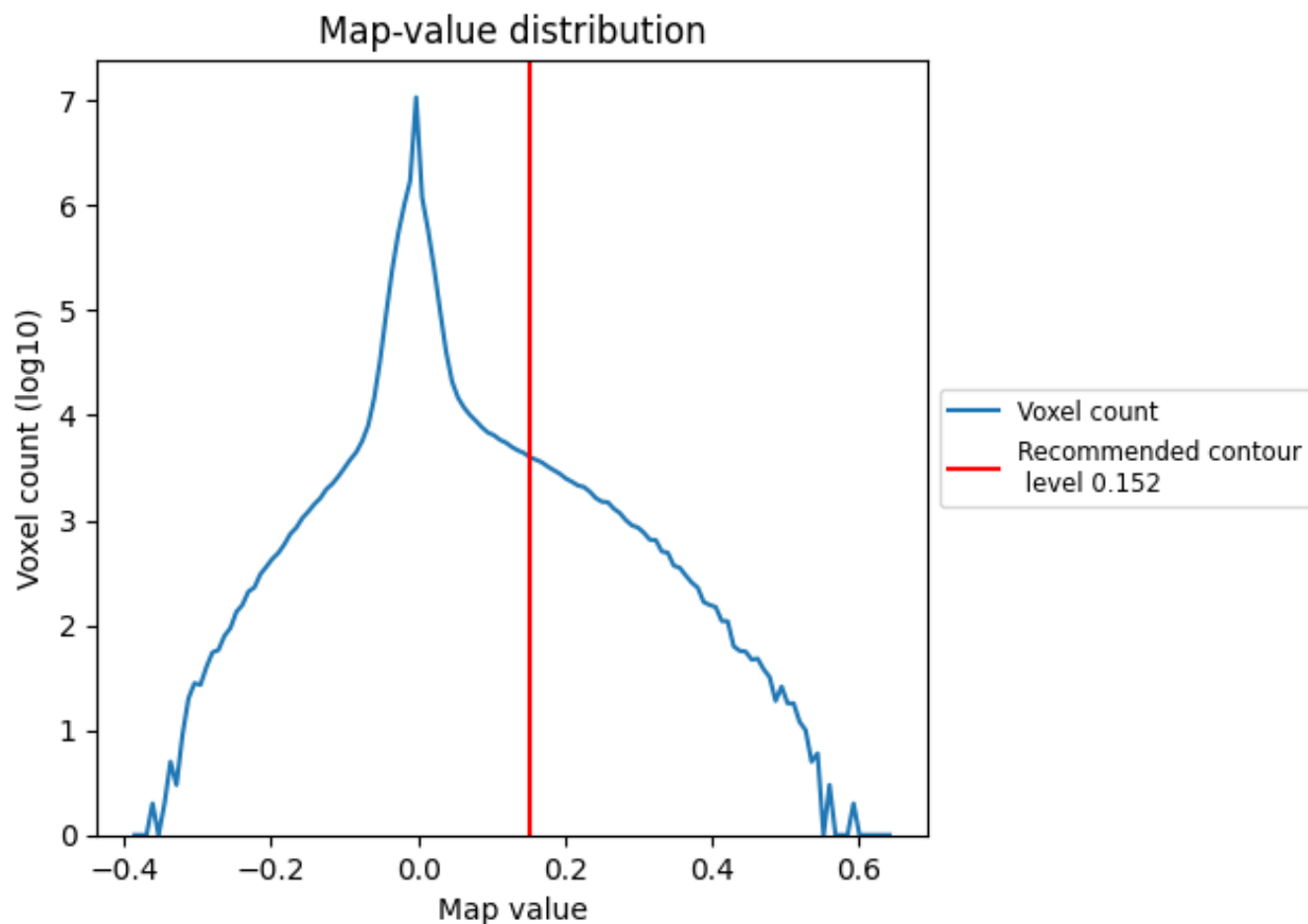


Z

7 Map analysis [i](#)

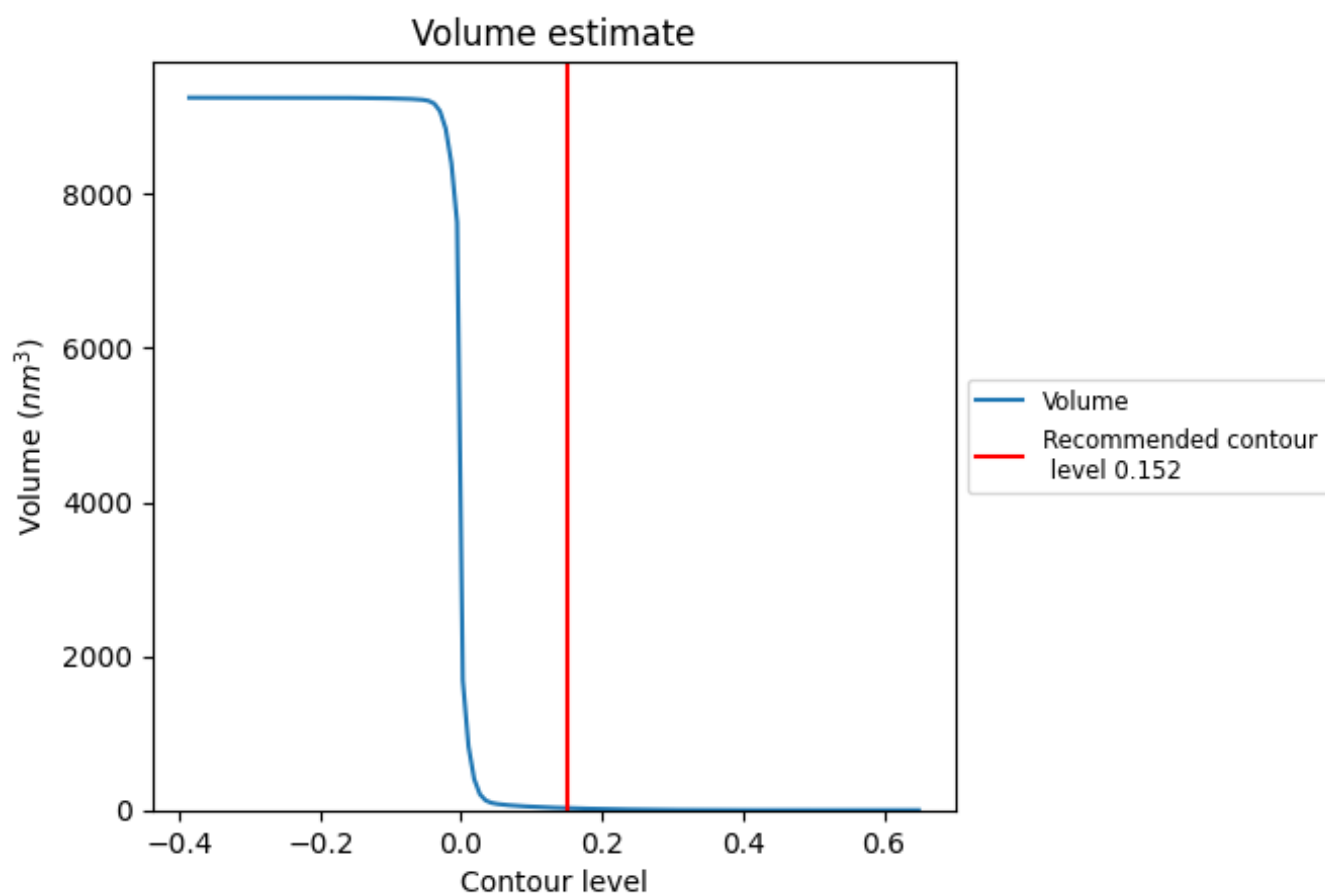
This section contains the results of statistical analysis of the map.

7.1 Map-value distribution [i](#)



The map-value distribution is plotted in 128 intervals along the x-axis. The y-axis is logarithmic. A spike in this graph at zero usually indicates that the volume has been masked.

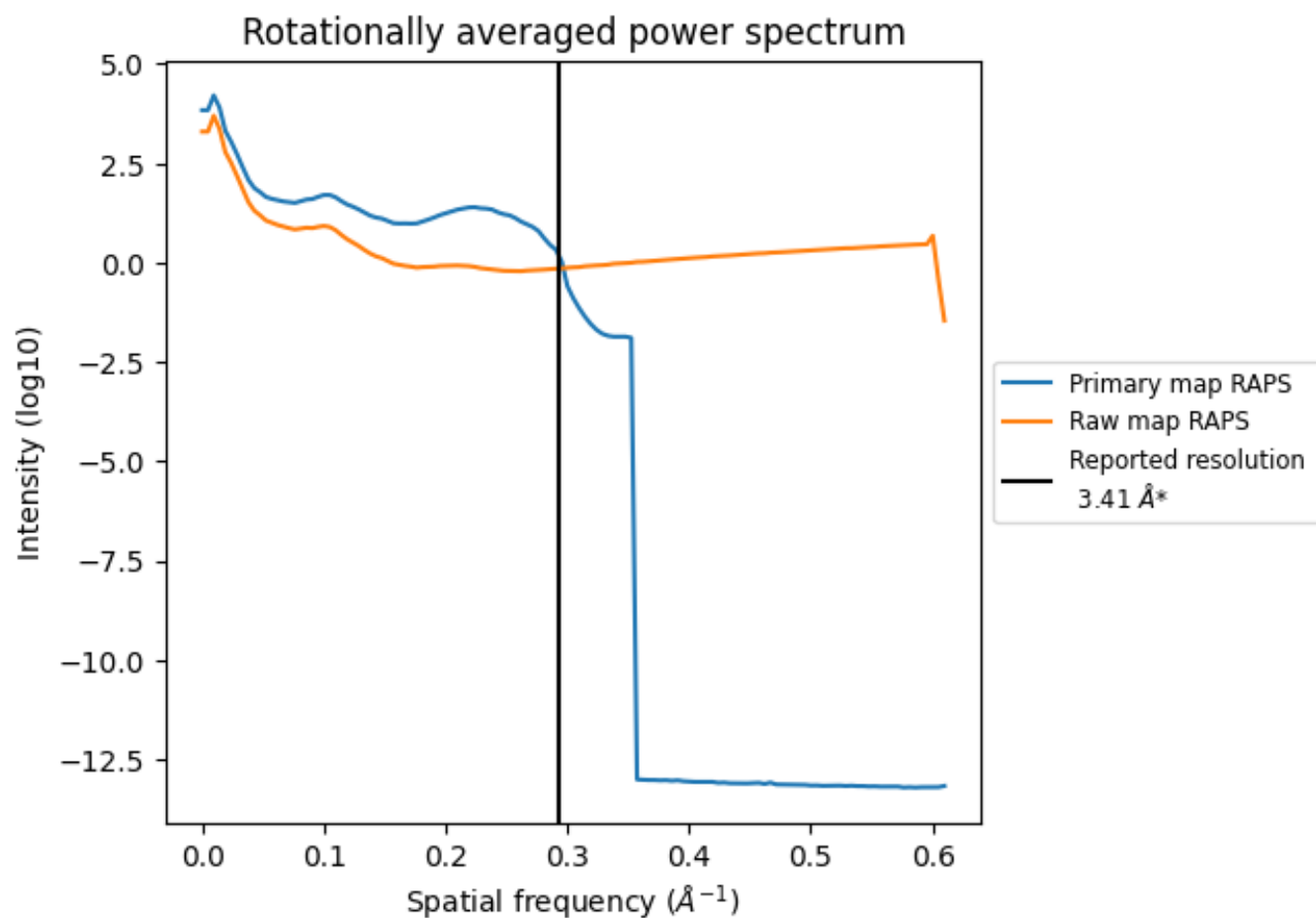
7.2 Volume estimate [i](#)



The volume at the recommended contour level is 26 nm³; this corresponds to an approximate mass of 23 kDa.

The volume estimate graph shows how the enclosed volume varies with the contour level. The recommended contour level is shown as a vertical line and the intersection between the line and the curve gives the volume of the enclosed surface at the given level.

7.3 Rotationally averaged power spectrum ⓘ

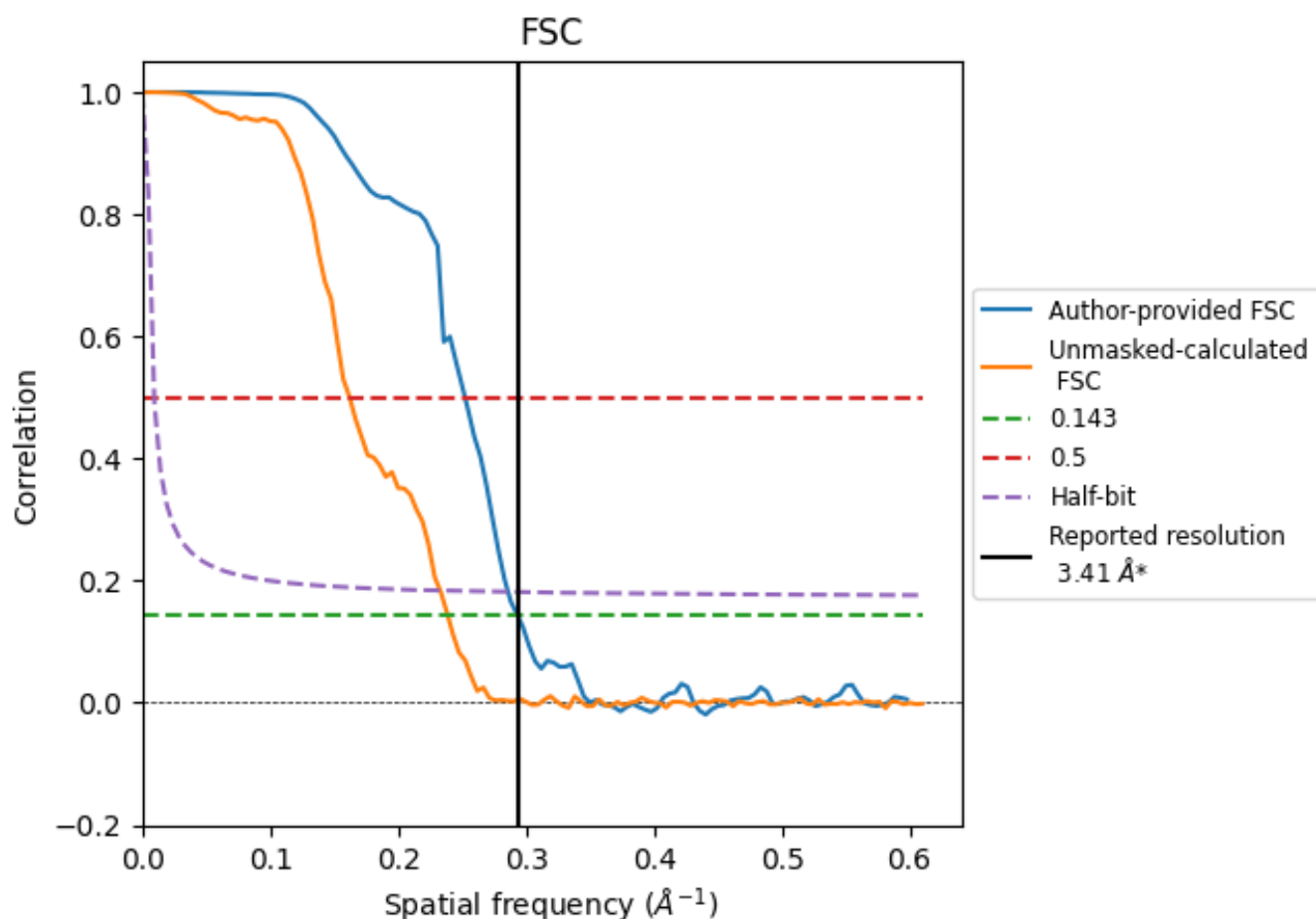


*Reported resolution corresponds to spatial frequency of 0.293 Å⁻¹

8 Fourier-Shell correlation [i](#)

Fourier-Shell Correlation (FSC) is the most commonly used method to estimate the resolution of single-particle and subtomogram-averaged maps. The shape of the curve depends on the imposed symmetry, mask and whether or not the two 3D reconstructions used were processed from a common reference. The reported resolution is shown as a black line. A curve is displayed for the half-bit criterion in addition to lines showing the 0.143 gold standard cut-off and 0.5 cut-off.

8.1 FSC [i](#)



*Reported resolution corresponds to spatial frequency of 0.293 \AA^{-1}

8.2 Resolution estimates [i](#)

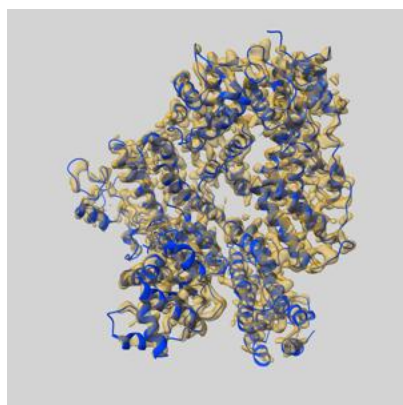
Resolution estimate (Å)	Estimation criterion (FSC cut-off)		
	0.143	0.5	Half-bit
Reported by author	3.41	-	-
Author-provided FSC curve	3.41	3.96	3.50
Unmasked-calculated*	4.19	6.17	4.29

*Resolution estimate based on FSC curve calculated by comparison of deposited half-maps. The value from deposited half-maps intersecting FSC 0.143 CUT-OFF 4.19 differs from the reported value 3.41 by more than 10 %

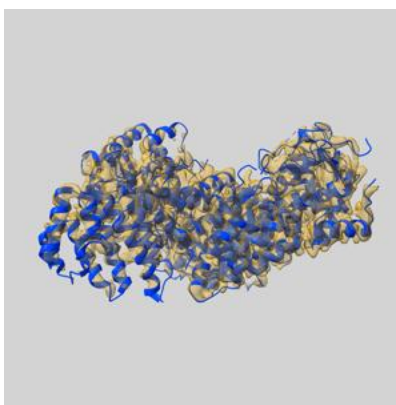
9 Map-model fit [i](#)

This section contains information regarding the fit between EMDB map EMD-64390 and PDB model 9UPB. Per-residue inclusion information can be found in section 3 on page 7.

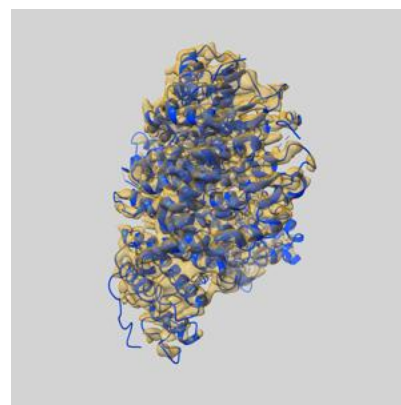
9.1 Map-model overlay [i](#)



X



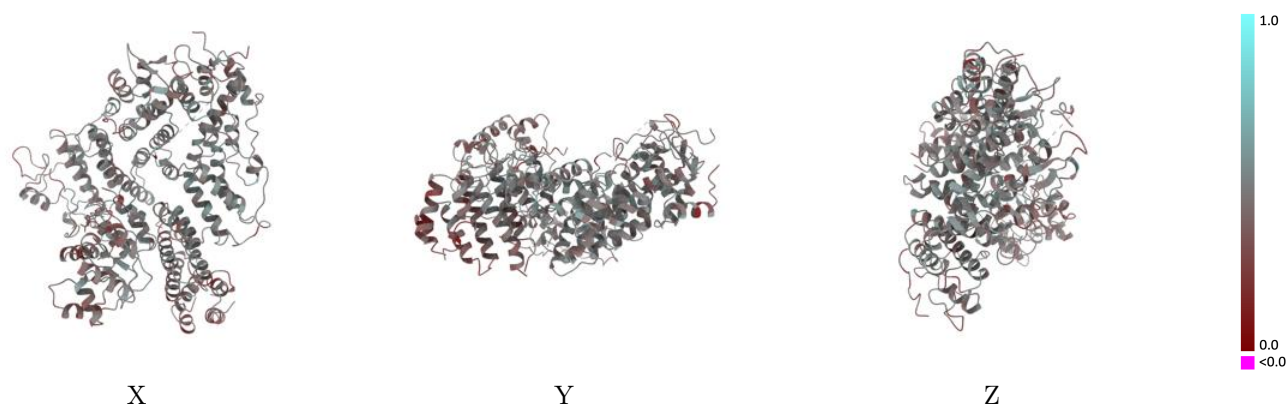
Y



Z

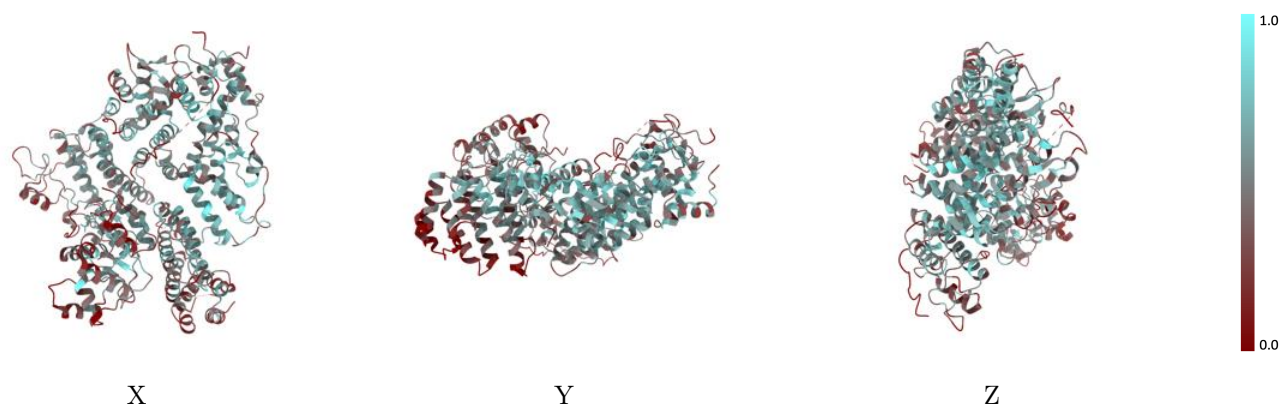
The images above show the 3D surface view of the map at the recommended contour level 0.152 at 50% transparency in yellow overlaid with a ribbon representation of the model coloured in blue. These images allow for the visual assessment of the quality of fit between the atomic model and the map.

9.2 Q-score mapped to coordinate model [i](#)



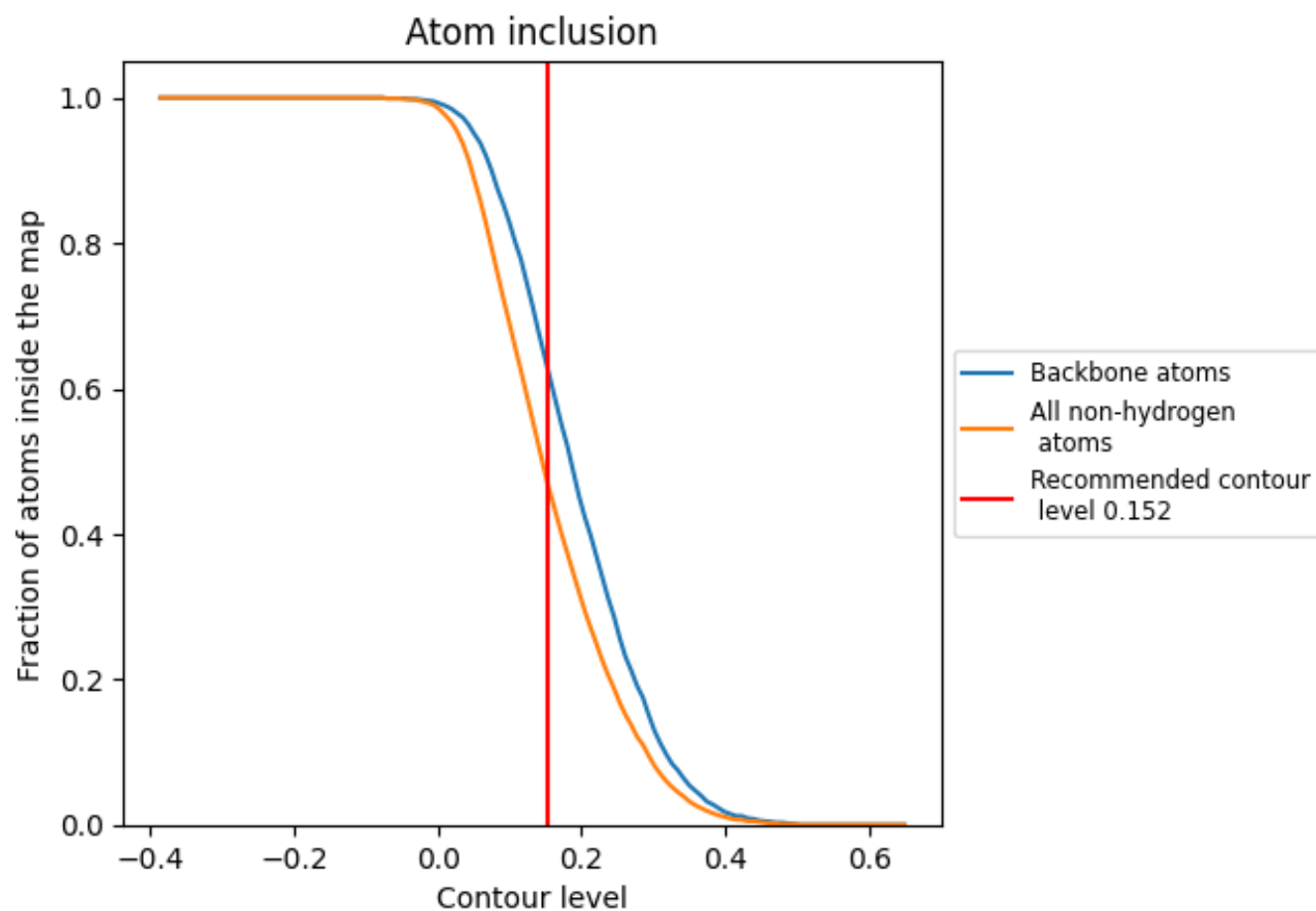
The images above show the model with each residue coloured according to its Q-score. This shows their resolvability in the map with higher Q-score values reflecting better resolvability. Please note: Q-score is calculating the resolvability of atoms, and thus high values are only expected at resolutions at which atoms can be resolved. Low Q-score values may therefore be expected for many entries.

9.3 Atom inclusion mapped to coordinate model [i](#)



The images above show the model with each residue coloured according to its atom inclusion. This shows to what extent they are inside the map at the recommended contour level (0.152).

9.4 Atom inclusion [i](#)



At the recommended contour level, 63% of all backbone atoms, 47% of all non-hydrogen atoms, are inside the map.

9.5 Map-model fit summary ⓘ

The table lists the average atom inclusion at the recommended contour level (0.152) and Q-score for the entire model and for each chain.

Chain	Atom inclusion	Q-score
All	<div></div> 0.4720	<div></div> 0.4410
A	<div></div> 0.4930	<div></div> 0.4480
B	<div></div> 0.4990	<div></div> 0.4380
C	<div></div> 0.4430	<div></div> 0.4400
D	<div></div> 0.4030	<div></div> 0.4340

