



wwPDB X-ray Structure Validation Summary Report ⓘ

Apr 4, 2026 – 10:10 PM UTC

PDB ID : 9UAH / pdb_00009uah
Title : Crystal structure of the OkaE-W79A mutant with a-ketoglutarate and okaramine A
Authors : Yu, J.J.; Yan, W.P.; Wang, X.Y.
Deposited on : 2025-03-31
Resolution : 2.50 Å(reported)

This is a wwPDB X-ray Structure Validation Summary Report for a publicly released PDB entry.

We welcome your comments at validation@mail.wwpdb.org

A user guide is available at

<https://www.wwpdb.org/validation/2017/XrayValidationReportHelp>

with specific help available everywhere you see the ⓘ symbol.

The types of validation reports are described at

<http://www.wwpdb.org/validation/2017/FAQs#types>.

The following versions of software and data (see [references ⓘ](#)) were used in the production of this report:

MolProbity	:	4-5-2 with Phenix2.0
Mogul	:	2022.3.0, CSD as543be (2022)
Xtriage (Phenix)	:	2.0
EDS	:	3.0
Buster-report	:	wwPDB partial adaption of 1.1.7 (2018)
Percentile statistics	:	20250101.v01 (using entries in the PDB archive January 1st 2025)
CCP4	:	9.0.010 (Gargrove)
Density-Fitness	:	1.0.12
Ideal geometry (proteins)	:	Engh & Huber (2001)
Ideal geometry (DNA, RNA)	:	Parkinson et al. (1996)
Validation Pipeline (wwPDB-VP)	:	2.49

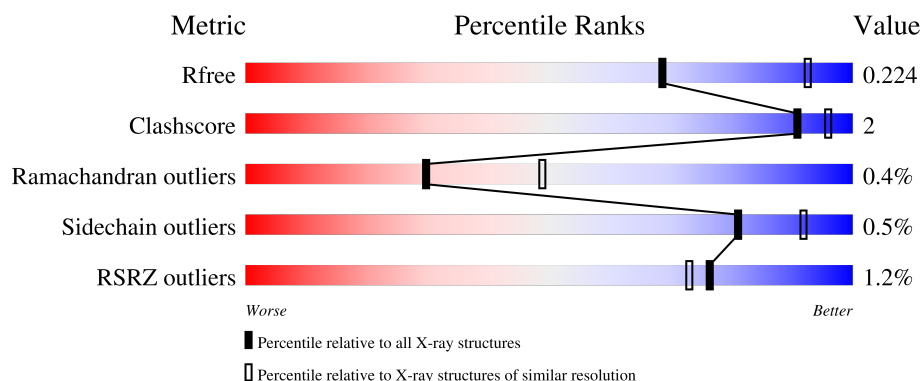
1 Overall quality at a glance

The following experimental techniques were used to determine the structure:

X-RAY DIFFRACTION

The reported resolution of this entry is 2.50 Å.

Percentile scores (ranging between 0-100) for global validation metrics of the entry are shown in the following graphic. The table shows the number of entries on which the scores are based.



Metric	Whole archive (#Entries)	Similar resolution (#Entries, resolution range(Å))
R_{free}	180053	5829 (2.50-2.50)
Clashscore	190562	6492 (2.50-2.50)
Ramachandran outliers	187476	6378 (2.50-2.50)
Sidechain outliers	187428	6380 (2.50-2.50)
RSRZ outliers	180081	5833 (2.50-2.50)

The table below summarises the geometric issues observed across the polymeric chains and their fit to the electron density. The red, orange, yellow and green segments of the lower bar indicate the fraction of residues that contain outliers for ≥ 3 , 2, 1 and 0 types of geometric quality criteria respectively. A grey segment represents the fraction of residues that are not modelled. The numeric value for each fraction is indicated below the corresponding segment, with a dot representing fractions $\leq 5\%$. The upper red bar (where present) indicates the fraction of residues that have poor fit to the electron density. The numeric value is given above the bar.

Mol	Chain	Length	Quality of chain
1	A	315	<div> <div>%</div> <div>86% 6% 8%</div> </div>
1	B	315	<div> <div>2%</div> <div>87% 9%</div> </div>
1	C	315	<div> <div>%</div> <div>87% 9%</div> </div>
1	D	315	<div> <div>%</div> <div>88% 9%</div> </div>

2 Entry composition

There are 5 unique types of molecules in this entry. The entry contains 9615 atoms, of which 0 are hydrogens and 0 are deuteriums.

In the tables below, the ZeroOcc column contains the number of atoms modelled with zero occupancy, the AltConf column contains the number of residues with at least one atom in alternate conformation and the Trace column contains the number of residues modelled with at most 2 atoms.

- Molecule 1 is a protein called Iron/ α -ketoglutarate-dependent dioxygenase okaE.

Mol	Chain	Residues	Atoms					ZeroOcc	AltConf	Trace
1	B	287	Total	C	N	O	S	0	0	0
			2245	1403	407	418	17			
1	A	289	Total	C	N	O	S	0	0	0
			2264	1416	410	421	17			
1	C	287	Total	C	N	O	S	0	0	0
			2249	1408	407	417	17			
1	D	287	Total	C	N	O	S	0	0	0
			2252	1409	408	418	17			

There are 68 discrepancies between the modelled and reference sequences:

Chain	Residue	Modelled	Actual	Comment	Reference
B	-6	MET	-	initiating methionine	UNP A0A2Z5U507
B	-5	GLY	-	expression tag	UNP A0A2Z5U507
B	-4	ASP	-	expression tag	UNP A0A2Z5U507
B	-3	ARG	-	expression tag	UNP A0A2Z5U507
B	-2	GLY	-	expression tag	UNP A0A2Z5U507
B	-1	PRO	-	expression tag	UNP A0A2Z5U507
B	0	GLU	-	expression tag	UNP A0A2Z5U507
B	1	PHE	-	expression tag	UNP A0A2Z5U507
B	79	ALA	TRP	engineered mutation	UNP A0A2Z5U507
B	301	TRP	-	expression tag	UNP A0A2Z5U507
B	302	SER	-	expression tag	UNP A0A2Z5U507
B	303	HIS	-	expression tag	UNP A0A2Z5U507
B	304	PRO	-	expression tag	UNP A0A2Z5U507
B	305	GLN	-	expression tag	UNP A0A2Z5U507
B	306	PHE	-	expression tag	UNP A0A2Z5U507
B	307	GLU	-	expression tag	UNP A0A2Z5U507
B	308	LYS	-	expression tag	UNP A0A2Z5U507
A	-6	MET	-	initiating methionine	UNP A0A2Z5U507
A	-5	GLY	-	expression tag	UNP A0A2Z5U507
A	-4	ASP	-	expression tag	UNP A0A2Z5U507
A	-3	ARG	-	expression tag	UNP A0A2Z5U507

Continued on next page...

Continued from previous page...

Chain	Residue	Modelled	Actual	Comment	Reference
A	-2	GLY	-	expression tag	UNP A0A2Z5U507
A	-1	PRO	-	expression tag	UNP A0A2Z5U507
A	0	GLU	-	expression tag	UNP A0A2Z5U507
A	1	PHE	-	expression tag	UNP A0A2Z5U507
A	79	ALA	TRP	engineered mutation	UNP A0A2Z5U507
A	301	TRP	-	expression tag	UNP A0A2Z5U507
A	302	SER	-	expression tag	UNP A0A2Z5U507
A	303	HIS	-	expression tag	UNP A0A2Z5U507
A	304	PRO	-	expression tag	UNP A0A2Z5U507
A	305	GLN	-	expression tag	UNP A0A2Z5U507
A	306	PHE	-	expression tag	UNP A0A2Z5U507
A	307	GLU	-	expression tag	UNP A0A2Z5U507
A	308	LYS	-	expression tag	UNP A0A2Z5U507
C	-6	MET	-	initiating methionine	UNP A0A2Z5U507
C	-5	GLY	-	expression tag	UNP A0A2Z5U507
C	-4	ASP	-	expression tag	UNP A0A2Z5U507
C	-3	ARG	-	expression tag	UNP A0A2Z5U507
C	-2	GLY	-	expression tag	UNP A0A2Z5U507
C	-1	PRO	-	expression tag	UNP A0A2Z5U507
C	0	GLU	-	expression tag	UNP A0A2Z5U507
C	1	PHE	-	expression tag	UNP A0A2Z5U507
C	79	ALA	TRP	engineered mutation	UNP A0A2Z5U507
C	301	TRP	-	expression tag	UNP A0A2Z5U507
C	302	SER	-	expression tag	UNP A0A2Z5U507
C	303	HIS	-	expression tag	UNP A0A2Z5U507
C	304	PRO	-	expression tag	UNP A0A2Z5U507
C	305	GLN	-	expression tag	UNP A0A2Z5U507
C	306	PHE	-	expression tag	UNP A0A2Z5U507
C	307	GLU	-	expression tag	UNP A0A2Z5U507
C	308	LYS	-	expression tag	UNP A0A2Z5U507
D	-6	MET	-	initiating methionine	UNP A0A2Z5U507
D	-5	GLY	-	expression tag	UNP A0A2Z5U507
D	-4	ASP	-	expression tag	UNP A0A2Z5U507
D	-3	ARG	-	expression tag	UNP A0A2Z5U507
D	-2	GLY	-	expression tag	UNP A0A2Z5U507
D	-1	PRO	-	expression tag	UNP A0A2Z5U507
D	0	GLU	-	expression tag	UNP A0A2Z5U507
D	1	PHE	-	expression tag	UNP A0A2Z5U507
D	79	ALA	TRP	engineered mutation	UNP A0A2Z5U507
D	301	TRP	-	expression tag	UNP A0A2Z5U507
D	302	SER	-	expression tag	UNP A0A2Z5U507
D	303	HIS	-	expression tag	UNP A0A2Z5U507

Continued on next page...

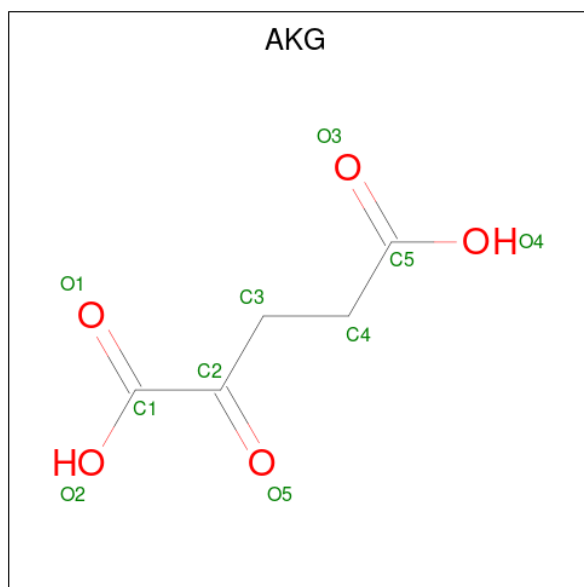
Continued from previous page...

Chain	Residue	Modelled	Actual	Comment	Reference
D	304	PRO	-	expression tag	UNP A0A2Z5U507
D	305	GLN	-	expression tag	UNP A0A2Z5U507
D	306	PHE	-	expression tag	UNP A0A2Z5U507
D	307	GLU	-	expression tag	UNP A0A2Z5U507
D	308	LYS	-	expression tag	UNP A0A2Z5U507

- Molecule 2 is COBALT (II) ION (CCD ID: CO) (formula: Co).

Mol	Chain	Residues	Atoms	ZeroOcc	AltConf
2	B	1	Total Co 1 1	0	0
2	A	1	Total Co 1 1	0	0
2	C	1	Total Co 1 1	0	0
2	D	1	Total Co 1 1	0	0

- Molecule 3 is 2-OXOGLUTARIC ACID (CCD ID: AKG) (formula: C₅H₆O₅).



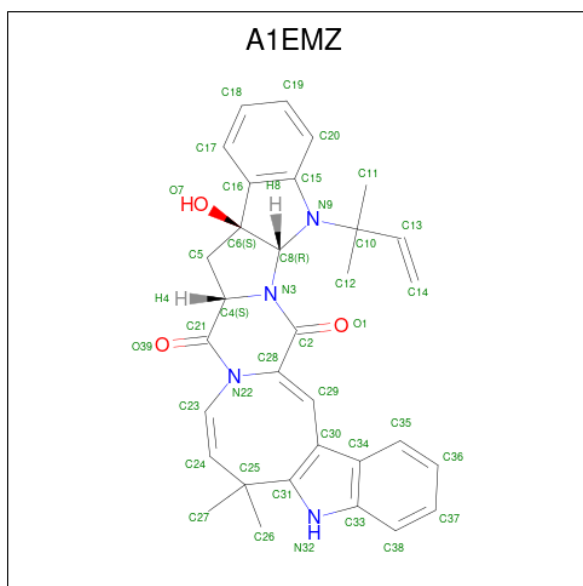
Mol	Chain	Residues	Atoms	ZeroOcc	AltConf
3	B	1	Total C O 10 5 5	0	0
3	A	1	Total C O 10 5 5	0	0

Continued on next page...

Continued from previous page...

Mol	Chain	Residues	Atoms			ZeroOcc	AltConf
3	C	1	Total	C	O	0	0
			10	5	5		
3	D	1	Total	C	O	0	0
			10	5	5		

- Molecule 4 is (1Z,4R,12S,14S,17Z)-12-hydroxy-19,19-dimethyl-5-(2-methylbut-3-en-2-yl)-3,5,16,21-tetrazaheptacyclo[14.13.0.03,14.04,12.06,11.020,28.022,27]nonacos-1(29),6,8,10,17,20(28),22,24,26-nonaene-2,15-dione (CCD ID: A1EMZ) (formula: C₃₂H₃₂N₄O₃) (labeled as "Ligand of Interest" by depositor).

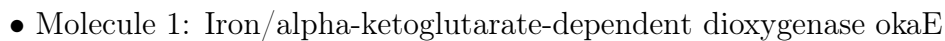
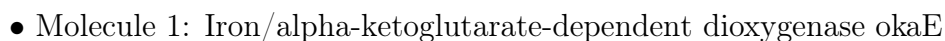


Mol	Chain	Residues	Atoms				ZeroOcc	AltConf
4	B	1	Total	C	N	O	0	0
			39	32	4	3		

- Molecule 5 is water.

Mol	Chain	Residues	Atoms		ZeroOcc	AltConf
5	B	146	Total	O	0	0
			146	146		
5	A	134	Total	O	0	0
			134	134		
5	C	126	Total	O	0	0
			126	126		
5	D	116	Total	O	0	0
			116	116		

- Molecule 1: Iron/alpha-ketoglutarate-dependent dioxygenase okaE



4 Data and refinement statistics

Property	Value	Source
Space group	P 21 21 21	Depositor
Cell constants a, b, c, α , β , γ	75.78Å 116.37Å 127.14Å 90.00° 90.00° 90.00°	Depositor
Resolution (Å)	48.70 – 2.50 48.70 – 2.50	Depositor EDS
% Data completeness (in resolution range)	99.3 (48.70-2.50) 99.3 (48.70-2.50)	Depositor EDS
R_{merge}	0.16	Depositor
R_{sym}	(Not available)	Depositor
$\langle I/\sigma(I) \rangle$ ¹	3.93 (at 2.51Å)	Xtriage
Refinement program	PHENIX 1.20.1_4487	Depositor
R, R_{free}	0.174 , 0.225 0.175 , 0.224	Depositor DCC
R_{free} test set	1966 reflections (4.97%)	wwPDB-VP
Wilson B-factor (Å ²)	26.6	Xtriage
Anisotropy	0.202	Xtriage
Bulk solvent k_{sol} (e/Å ³), B_{sol} (Å ²)	0.36 , 45.7	EDS
L-test for twinning ²	$\langle L \rangle = 0.49$, $\langle L^2 \rangle = 0.32$	Xtriage
Estimated twinning fraction	No twinning to report.	Xtriage
F_o, F_c correlation	0.94	EDS
Total number of atoms	9615	wwPDB-VP
Average B, all atoms (Å ²)	28.0	wwPDB-VP

Xtriage's analysis on translational NCS is as follows: *The largest off-origin peak in the Patterson function is 8.32% of the height of the origin peak. No significant pseudotranslation is detected.*

¹Intensities estimated from amplitudes.

²Theoretical values of $\langle |L| \rangle$, $\langle L^2 \rangle$ for acentric reflections are 0.5, 0.333 respectively for untwinned datasets, and 0.375, 0.2 for perfectly twinned datasets.

5 Model quality

5.1 Standard geometry

Bond lengths and bond angles in the following residue types are not validated in this section: CO, A1EMZ, AKG

The Z score for a bond length (or angle) is the number of standard deviations the observed value is removed from the expected value. A bond length (or angle) with $|Z| > 5$ is considered an outlier worth inspection. RMSZ is the root-mean-square of all Z scores of the bond lengths (or angles).

Mol	Chain	Bond lengths		Bond angles	
		RMSZ	# Z >5	RMSZ	# Z >5
1	A	0.08	0/2318	0.27	0/3156
1	B	0.08	0/2299	0.26	0/3130
1	C	0.08	0/2303	0.27	0/3134
1	D	0.10	0/2306	0.29	1/3138 (0.0%)
All	All	0.08	0/9226	0.27	1/12558 (0.0%)

Chiral center outliers are detected by calculating the chiral volume of a chiral center and verifying if the center is modelled as a planar moiety or with the opposite hand. A planarity outlier is detected by checking planarity of atoms in a peptide group, atoms in a mainchain group or atoms of a sidechain that are expected to be planar.

Mol	Chain	#Chirality outliers	#Planarity outliers
1	B	0	1
1	D	0	1
All	All	0	2

There are no bond length outliers.

All (1) bond angle outliers are listed below:

Mol	Chain	Res	Type	Atoms	Z	Observed(°)	Ideal(°)
1	D	270	SER	N-CA-C	-7.59	94.63	110.80

There are no chirality outliers.

All (2) planarity outliers are listed below:

Mol	Chain	Res	Type	Group
1	B	269	ILE	Peptide
1	D	269	ILE	Peptide

5.2 Too-close contacts

In the following table, the Non-H and H(model) columns list the number of non-hydrogen atoms and hydrogen atoms in the chain respectively. The H(added) column lists the number of hydrogen atoms added and optimized by MolProbity. The Clashes column lists the number of clashes within the asymmetric unit, whereas Symm-Clashes lists symmetry-related clashes.

Mol	Chain	Non-H	H(model)	H(added)	Clashes	Symm-Clashes
1	A	2264	0	2224	10	0
1	B	2245	0	2198	7	0
1	C	2249	0	2214	8	0
1	D	2252	0	2218	7	0
2	A	1	0	0	0	0
2	B	1	0	0	0	0
2	C	1	0	0	0	0
2	D	1	0	0	0	0
3	A	10	0	4	0	0
3	B	10	0	4	0	0
3	C	10	0	4	0	0
3	D	10	0	4	0	0
4	B	39	0	0	1	0
5	A	134	0	0	0	0
5	B	146	0	0	0	0
5	C	126	0	0	1	0
5	D	116	0	0	1	0
All	All	9615	0	8870	30	0

The all-atom clashscore is defined as the number of clashes found per 1000 atoms (including hydrogen atoms). The all-atom clashscore for this structure is 2.

The worst 5 of 30 close contacts within the same asymmetric unit are listed below, sorted by their clash magnitude.

Atom-1	Atom-2	Interatomic distance (Å)	Clash overlap (Å)
1:B:141:PRO:HB3	1:D:270:SER:HB3	1.74	0.70
4:B:403:A1EMZ:C30	4:B:403:A1EMZ:C23	2.72	0.68
1:B:164:PHE:HB2	1:B:196:LEU:H	1.60	0.66
1:D:164:PHE:HB2	1:D:196:LEU:H	1.62	0.65
1:A:246:ARG:NH2	1:A:287:ILE:O	2.34	0.59

There are no symmetry-related clashes.

5.3 Torsion angles

5.3.1 Protein backbone

In the following table, the Percentiles column shows the percent Ramachandran outliers of the chain as a percentile score with respect to all X-ray entries followed by that with respect to entries of similar resolution.

The Analysed column shows the number of residues for which the backbone conformation was analysed, and the total number of residues.

Mol	Chain	Analysed	Favoured	Allowed	Outliers	Percentiles	
1	A	287/315 (91%)	279 (97%)	6 (2%)	2 (1%)	18	34
1	B	285/315 (90%)	275 (96%)	10 (4%)	0	100	100
1	C	285/315 (90%)	278 (98%)	5 (2%)	2 (1%)	18	34
1	D	285/315 (90%)	272 (95%)	13 (5%)	0	100	100
All	All	1142/1260 (91%)	1104 (97%)	34 (3%)	4 (0%)	30	49

All (4) Ramachandran outliers are listed below:

Mol	Chain	Res	Type
1	A	270	SER
1	C	270	SER
1	A	268	VAL
1	C	268	VAL

5.3.2 Protein sidechains

In the following table, the Percentiles column shows the percent sidechain outliers of the chain as a percentile score with respect to all X-ray entries followed by that with respect to entries of similar resolution.

The Analysed column shows the number of residues for which the sidechain conformation was analysed, and the total number of residues.

Mol	Chain	Analysed	Rotameric	Outliers	Percentiles	
1	A	250/274 (91%)	249 (100%)	1 (0%)	84	93
1	B	247/274 (90%)	246 (100%)	1 (0%)	84	93
1	C	248/274 (90%)	246 (99%)	2 (1%)	73	88
1	D	249/274 (91%)	248 (100%)	1 (0%)	84	93
All	All	994/1096 (91%)	989 (100%)	5 (0%)	81	92

All (5) residues with a non-rotameric sidechain are listed below:

Mol	Chain	Res	Type
1	B	67	GLU
1	A	297	VAL
1	C	45	ILE
1	C	269	ILE
1	D	270	SER

Sometimes sidechains can be flipped to improve hydrogen bonding and reduce clashes. 5 of 6 such sidechains are listed below:

Mol	Chain	Res	Type
1	C	92	HIS
1	D	135	ASN
1	D	144	GLN
1	B	222	HIS
1	B	197	GLN

5.3.3 RNA [i](#)

There are no RNA molecules in this entry.

5.4 Non-standard residues in protein, DNA, RNA chains [i](#)

There are no non-standard protein/DNA/RNA residues in this entry.

5.5 Carbohydrates [i](#)

There are no oligosaccharides in this entry.

5.6 Ligand geometry [i](#)

Of 9 ligands modelled in this entry, 4 are monoatomic - leaving 5 for Mogul analysis.

In the following table, the Counts columns list the number of bonds (or angles) for which Mogul statistics could be retrieved, the number of bonds (or angles) that are observed in the model and the number of bonds (or angles) that are defined in the Chemical Component Dictionary. The Link column lists molecule types, if any, to which the group is linked. The Z score for a bond length (or angle) is the number of standard deviations the observed value is removed from the expected value. A bond length (or angle) with $|Z| > 2$ is considered an outlier worth inspection. RMSZ is the root-mean-square of all Z scores of the bond lengths (or angles).

Mol	Type	Chain	Res	Link	Bond lengths			Bond angles		
					Counts	RMSZ	# Z > 2	Counts	RMSZ	# Z > 2
3	AKG	B	402	2	9,9,9	0.17	0	11,11,11	0.48	0
4	A1EMZ	B	403	-	40,45,45	0.98	3 (7%)	44,74,74	1.40	4 (9%)
3	AKG	D	402	2	9,9,9	0.18	0	11,11,11	0.47	0
3	AKG	A	402	2	9,9,9	0.19	0	11,11,11	0.46	0
3	AKG	C	402	2	9,9,9	0.20	0	11,11,11	0.46	0

In the following table, the Chirals column lists the number of chiral outliers, the number of chiral centers analysed, the number of these observed in the model and the number defined in the Chemical Component Dictionary. Similar counts are reported in the Torsion and Rings columns. '-' means no outliers of that kind were identified.

Mol	Type	Chain	Res	Link	Chirals	Torsions	Rings
3	AKG	B	402	2	-	1/9/9/9	-
4	A1EMZ	B	403	-	-	3/7/78/78	-
3	AKG	D	402	2	-	2/9/9/9	-
3	AKG	A	402	2	-	2/9/9/9	-
3	AKG	C	402	2	-	2/9/9/9	-

All (3) bond length outliers are listed below:

Mol	Chain	Res	Type	Atoms	Z	Observed(Å)	Ideal(Å)
4	B	403	A1EMZ	C30-C31	3.44	1.43	1.38
4	B	403	A1EMZ	C28-C2	-3.41	1.40	1.47
4	B	403	A1EMZ	C2-N3	-2.04	1.34	1.36

All (4) bond angle outliers are listed below:

Mol	Chain	Res	Type	Atoms	Z	Observed(°)	Ideal(°)
4	B	403	A1EMZ	C12-C10-N9	4.87	115.99	109.36
4	B	403	A1EMZ	C28-C2-N3	3.27	119.64	115.04
4	B	403	A1EMZ	C5-C6-C8	2.74	107.62	103.61
4	B	403	A1EMZ	C17-C16-C15	2.49	122.28	120.01

There are no chirality outliers.

5 of 10 torsion outliers are listed below:

Mol	Chain	Res	Type	Atoms
4	B	403	A1EMZ	N9-C10-C13-C14
4	B	403	A1EMZ	C11-C10-C13-C14
4	B	403	A1EMZ	C12-C10-C13-C14

Continued on next page...

Continued from previous page...

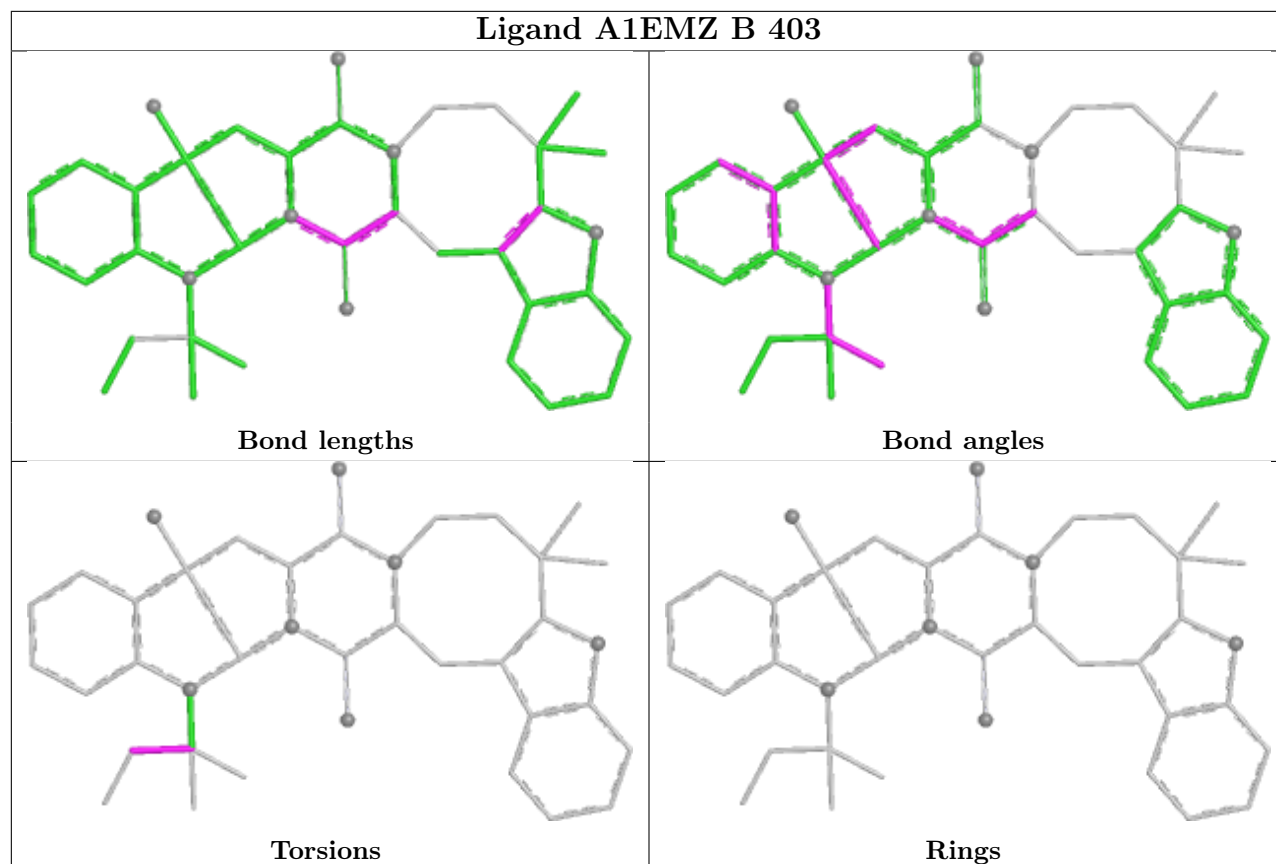
Mol	Chain	Res	Type	Atoms
3	D	402	AKG	C3-C4-C5-O3
3	A	402	AKG	C3-C4-C5-O3

There are no ring outliers.

1 monomer is involved in 1 short contact:

Mol	Chain	Res	Type	Clashes	Symm-Clashes
4	B	403	A1EMZ	1	0

The following is a two-dimensional graphical depiction of Mogul quality analysis of bond lengths, bond angles, torsion angles, and ring geometry for all instances of the Ligand of Interest. In addition, ligands with molecular weight > 250 and outliers as shown on the validation Tables will also be included. For torsion angles, if less than 5% of the Mogul distribution of torsion angles is within 10 degrees of the torsion angle in question, then that torsion angle is considered an outlier. Any bond that is central to one or more torsion angles identified as an outlier by Mogul will be highlighted in the graph. For rings, the root-mean-square deviation (RMSD) between the ring in question and similar rings identified by Mogul is calculated over all ring torsion angles. If the average RMSD is greater than 60 degrees and the minimal RMSD between the ring in question and any Mogul-identified rings is also greater than 60 degrees, then that ring is considered an outlier. The outliers are highlighted in purple. The color gray indicates Mogul did not find sufficient equivalents in the CSD to analyse the geometry.



5.7 Other polymers [i](#)

There are no such residues in this entry.

5.8 Polymer linkage issues [i](#)

There are no chain breaks in this entry.

6 Fit of model and data [i](#)

6.1 Protein, DNA and RNA chains [i](#)

In the following table, the column labelled ‘#RSRZ > 2’ contains the number (and percentage) of RSRZ outliers, followed by percent RSRZ outliers for the chain as percentile scores relative to all X-ray entries and entries of similar resolution. The OWAB column contains the minimum, median, 95th percentile and maximum values of the occupancy-weighted average B-factor per residue. The column labelled ‘Q < 0.9’ lists the number of (and percentage) of residues with an average occupancy less than 0.9.

Mol	Chain	Analysed	<RSRZ>	#RSRZ>2	OWAB(Å ²)	Q<0.9
1	A	289/315 (91%)	-0.30	4 (1%) 73 70	14, 25, 45, 85	0
1	B	287/315 (91%)	-0.31	5 (1%) 69 65	16, 26, 41, 80	0
1	C	287/315 (91%)	-0.25	2 (0%) 84 81	16, 28, 44, 89	0
1	D	287/315 (91%)	-0.26	3 (1%) 79 76	16, 27, 49, 81	0
All	All	1150/1260 (91%)	-0.28	14 (1%) 76 73	14, 26, 47, 89	0

The worst 5 of 14 RSRZ outliers are listed below:

Mol	Chain	Res	Type	RSRZ
1	D	269	ILE	4.6
1	A	269	ILE	3.8
1	B	269	ILE	3.8
1	A	297	VAL	3.4
1	A	270	SER	2.8

6.2 Non-standard residues in protein, DNA, RNA chains [i](#)

There are no non-standard protein/DNA/RNA residues in this entry.

6.3 Carbohydrates [i](#)

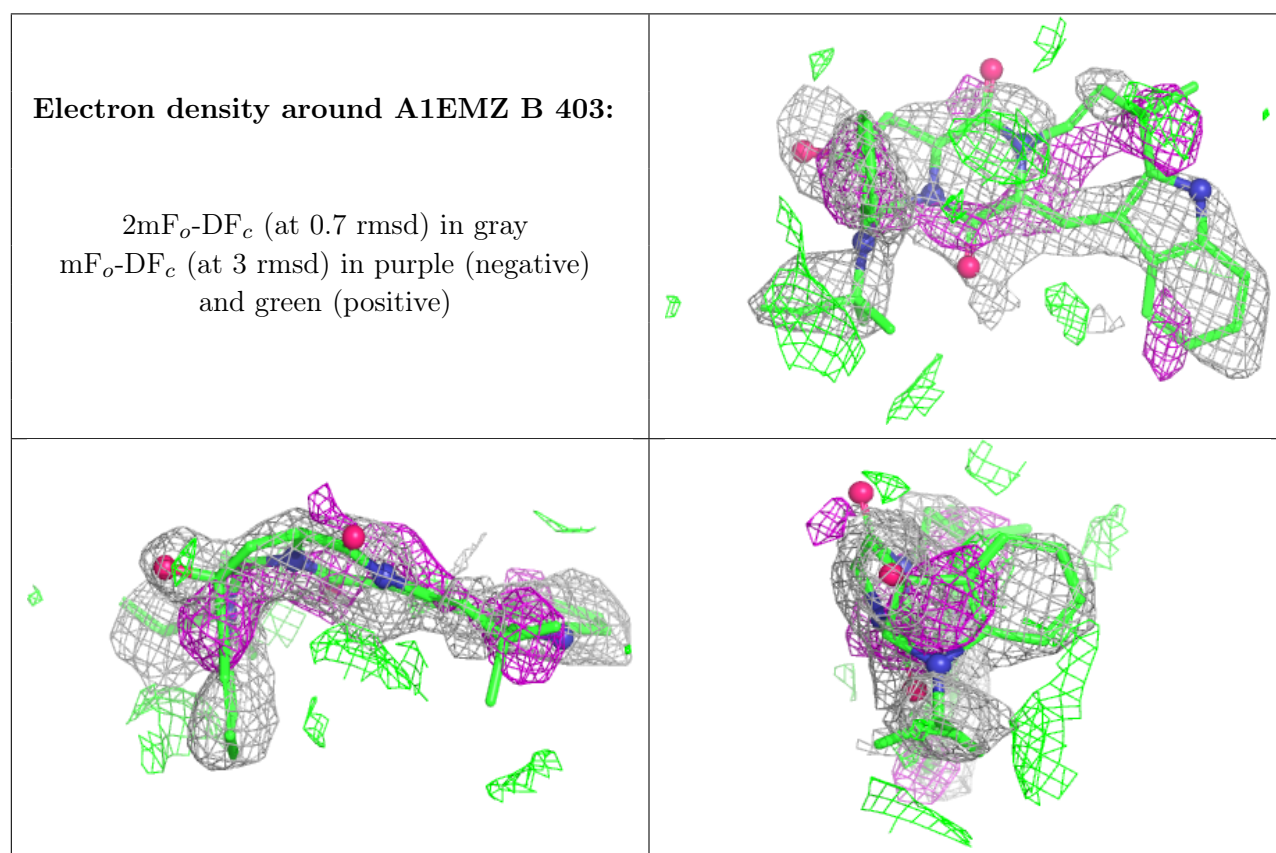
There are no oligosaccharides in this entry.

6.4 Ligands [i](#)

In the following table, the Atoms column lists the number of modelled atoms in the group and the number defined in the chemical component dictionary. The B-factors column lists the minimum, median, 95th percentile and maximum values of B factors of atoms in the group. The column labelled ‘Q < 0.9’ lists the number of atoms with occupancy less than 0.9.

Mol	Type	Chain	Res	Atoms	RSCC	RSR	B-factors(\AA^2)	Q<0.9
4	A1EMZ	B	403	39/39	0.69	0.17	35,45,54,55	0
3	AKG	A	402	10/10	0.94	0.08	23,25,28,30	0
3	AKG	B	402	10/10	0.95	0.07	19,23,32,33	0
3	AKG	D	402	10/10	0.96	0.07	26,29,32,34	0
3	AKG	C	402	10/10	0.96	0.07	23,27,29,30	0
2	CO	A	401	1/1	0.99	0.02	23,23,23,23	0
2	CO	D	401	1/1	1.00	0.01	27,27,27,27	0
2	CO	B	401	1/1	1.00	0.02	24,24,24,24	0
2	CO	C	401	1/1	1.00	0.01	23,23,23,23	0

The following is a graphical depiction of the model fit to experimental electron density of all instances of the Ligand of Interest. In addition, ligands with molecular weight > 250 and outliers as shown on the geometry validation Tables will also be included. Each fit is shown from different orientation to approximate a three-dimensional view.



6.5 Other polymers ⓘ

There are no such residues in this entry.