



# Full wwPDB X-ray Structure Validation Report ⓘ

Mar 5, 2026 – 01:41 AM UTC

PDB ID : 9TPM / pdb\_00009tpm  
Title : Structure of LolB from Porphyromonas gingivalis  
Authors : Jaiman, D.; Persson, K.  
Deposited on : 2025-12-18  
Resolution : 2.10 Å(reported)

This is a Full wwPDB X-ray Structure Validation Report for a publicly released PDB entry.

We welcome your comments at [validation@mail.wwpdb.org](mailto:validation@mail.wwpdb.org)

A user guide is available at

<https://www.wwpdb.org/validation/2017/XrayValidationReportHelp>

with specific help available everywhere you see the ⓘ symbol.

The types of validation reports are described at

<http://www.wwpdb.org/validation/2017/FAQs#types>.

---

The following versions of software and data (see [references ⓘ](#)) were used in the production of this report:

MolProbity	:	4-5-2 with Phenix2.0
Mogul	:	2022.3.0, CSD as543be (2022)
Xtriage (Phenix)	:	2.0
EDS	:	3.0
Percentile statistics	:	20250101.v01 (using entries in the PDB archive January 1st 2025)
CCP4	:	9.0.010 (Gargrove)
Density-Fitness	:	1.0.12
Ideal geometry (proteins)	:	Engh & Huber (2001)
Ideal geometry (DNA, RNA)	:	Parkinson et al. (1996)
Validation Pipeline (wwPDB-VP)	:	2.49

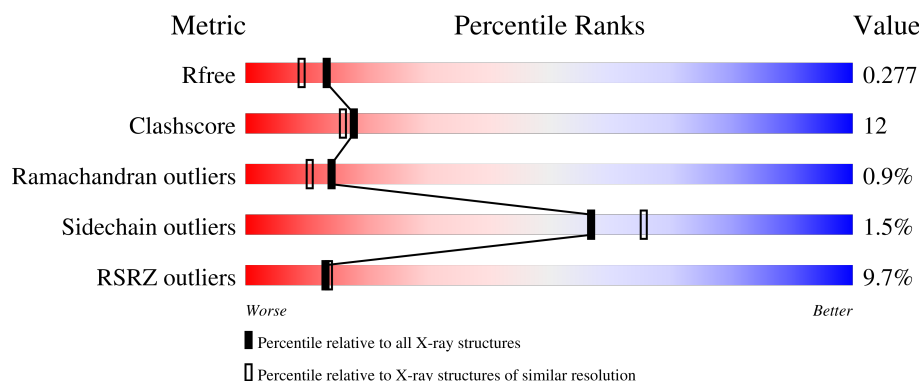
# 1 Overall quality at a glance

The following experimental techniques were used to determine the structure:

## *X-RAY DIFFRACTION*

The reported resolution of this entry is 2.10 Å.

Percentile scores (ranging between 0-100) for global validation metrics of the entry are shown in the following graphic. The table shows the number of entries on which the scores are based.



Metric	Whole archive (#Entries)	Similar resolution (#Entries, resolution range(Å))
$R_{free}$	180053	6658 (2.10-2.10)
Clashscore	190562	7164 (2.10-2.10)
Ramachandran outliers	187476	7099 (2.10-2.10)
Sidechain outliers	187428	7100 (2.10-2.10)
RSRZ outliers	180081	6662 (2.10-2.10)

The table below summarises the geometric issues observed across the polymeric chains and their fit to the electron density. The red, orange, yellow and green segments of the lower bar indicate the fraction of residues that contain outliers for  $\geq 3$ , 2, 1 and 0 types of geometric quality criteria respectively. A grey segment represents the fraction of residues that are not modelled. The numeric value for each fraction is indicated below the corresponding segment, with a dot representing fractions  $\leq 5\%$ . The upper red bar (where present) indicates the fraction of residues that have poor fit to the electron density. The numeric value is given above the bar.

Mol	Chain	Length	Quality of chain
1	A	274	

The following table lists non-polymeric compounds, carbohydrate monomers and non-standard residues in protein, DNA, RNA chains that are outliers for geometric or electron-density-fit criteria:

Mol	Type	Chain	Res	Chirality	Geometry	Clashes	Electron density
4	ACT	A	305	-	-	X	-

*Continued on next page...*

*Continued from previous page...*

Mol	Type	Chain	Res	Chirality	Geometry	Clashes	Electron density
4	ACT	A	306	-	-	X	-

## 2 Entry composition

There are 7 unique types of molecules in this entry. The entry contains 2160 atoms, of which 117 are hydrogens and 0 are deuteriums.

In the tables below, the ZeroOcc column contains the number of atoms modelled with zero occupancy, the AltConf column contains the number of residues with at least one atom in alternate conformation and the Trace column contains the number of residues modelled with at most 2 atoms.

- Molecule 1 is a protein called DUF4292 domain-containing protein.

Mol	Chain	Residues	Atoms					ZeroOcc	AltConf	Trace
1	A	236	Total	C	N	O	S	0	0	0
			1873	1185	331	352	5			

There are 31 discrepancies between the modelled and reference sequences:

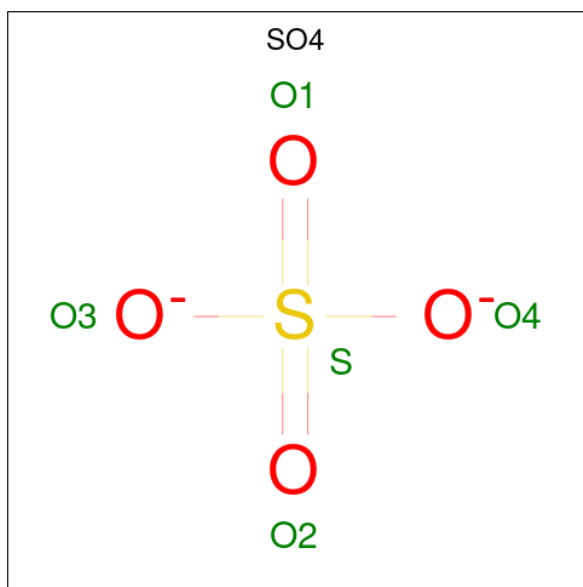
Chain	Residue	Modelled	Actual	Comment	Reference
A	-13	MET	-	initiating methionine	UNP Q7MVT4
A	-12	LYS	-	expression tag	UNP Q7MVT4
A	-11	HIS	-	expression tag	UNP Q7MVT4
A	-10	HIS	-	expression tag	UNP Q7MVT4
A	-9	HIS	-	expression tag	UNP Q7MVT4
A	-8	HIS	-	expression tag	UNP Q7MVT4
A	-7	HIS	-	expression tag	UNP Q7MVT4
A	-6	HIS	-	expression tag	UNP Q7MVT4
A	-5	PRO	-	expression tag	UNP Q7MVT4
A	-4	MET	-	expression tag	UNP Q7MVT4
A	-3	SER	-	expression tag	UNP Q7MVT4
A	-2	ASP	-	expression tag	UNP Q7MVT4
A	-1	TYR	-	expression tag	UNP Q7MVT4
A	0	ASP	-	expression tag	UNP Q7MVT4
A	1	ILE	-	expression tag	UNP Q7MVT4
A	2	PRO	-	expression tag	UNP Q7MVT4
A	3	THR	-	expression tag	UNP Q7MVT4
A	4	THR	-	expression tag	UNP Q7MVT4
A	5	GLU	-	expression tag	UNP Q7MVT4
A	6	ASN	-	expression tag	UNP Q7MVT4
A	7	LEU	-	expression tag	UNP Q7MVT4
A	8	TYR	-	expression tag	UNP Q7MVT4
A	9	PHE	-	expression tag	UNP Q7MVT4
A	10	GLN	-	expression tag	UNP Q7MVT4
A	11	GLY	-	expression tag	UNP Q7MVT4
A	12	ALA	-	expression tag	UNP Q7MVT4
A	13	MET	-	expression tag	UNP Q7MVT4

*Continued on next page...*

Continued from previous page...

Chain	Residue	Modelled	Actual	Comment	Reference
A	197	LYS	GLU	variant	UNP Q7MVT4
A	208	LEU	PHE	variant	UNP Q7MVT4
A	227	PRO	SER	variant	UNP Q7MVT4
A	240	THR	ILE	variant	UNP Q7MVT4

- Molecule 2 is SULFATE ION (CCD ID: SO4) (formula: O<sub>4</sub>S).



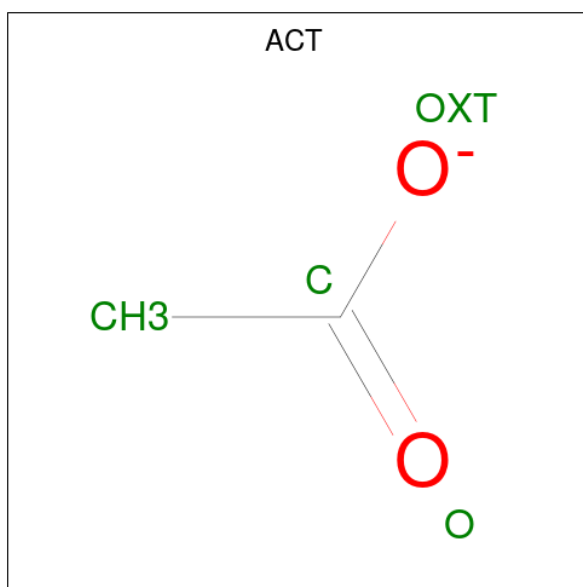
Mol	Chain	Residues	Atoms			ZeroOcc	AltConf
2	A	1	Total	O	S	0	0
			5	4	1		

- Molecule 3 is DI(HYDROXYETHYL)ETHER (CCD ID: PEG) (formula: C<sub>4</sub>H<sub>10</sub>O<sub>3</sub>).



Mol	Chain	Residues	Atoms				ZeroOcc	AltConf
3	A	1	Total	C	H	O	0	0
			17	4	10	3		
3	A	1	Total	C	H	O	0	0
			17	4	10	3		
3	A	1	Total	C	H	O	0	0
			17	4	10	3		

- Molecule 4 is ACETATE ION (CCD ID: ACT) (formula:  $C_2H_3O_2$ ).



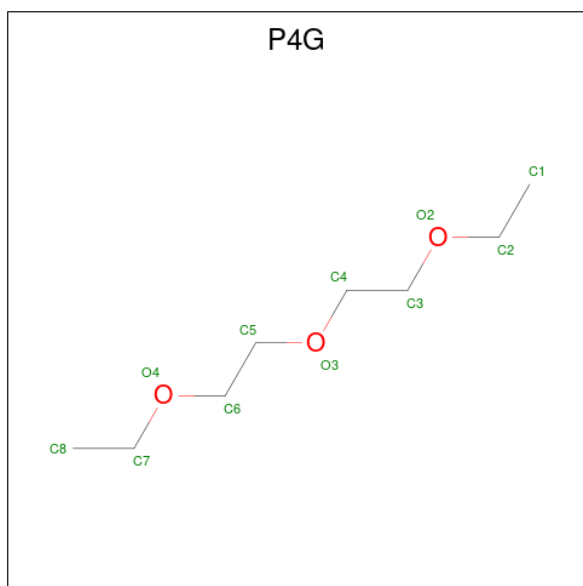
Mol	Chain	Residues	Atoms				ZeroOcc	AltConf
4	A	1	Total	C	H	O	0	0
			7	2	3	2		

*Continued on next page...*

Continued from previous page...

Mol	Chain	Residues	Atoms				ZeroOcc	AltConf
4	A	1	Total	C	H	O	0	0
			7	2	3	2		
4	A	1	Total	C	H	O	0	0
			7	2	3	2		
4	A	1	Total	C	H	O	0	0
			7	2	3	2		
4	A	1	Total	C	H	O	0	0
			7	2	3	2		

- Molecule 5 is 1-ETHOXY-2-(2-ETHOXYETHOXY)ETHANE (CCD ID: P4G) (formula:  $C_8H_{18}O_3$ ).



Mol	Chain	Residues	Atoms				ZeroOcc	AltConf
5	A	1	Total	C	H	O	0	0
			29	8	18	3		
5	A	1	Total	C	H	O	0	0
			29	8	18	3		
5	A	1	Total	C	H	O	0	0
			29	8	18	3		
5	A	1	Total	C	H	O	0	0
			29	8	18	3		

- Molecule 6 is ZINC ION (CCD ID: ZN) (formula:  $Zn$ ).

Mol	Chain	Residues	Atoms		ZeroOcc	AltConf
6	A	2	Total	Zn	0	0
			2	2		

- Molecule 7 is water.

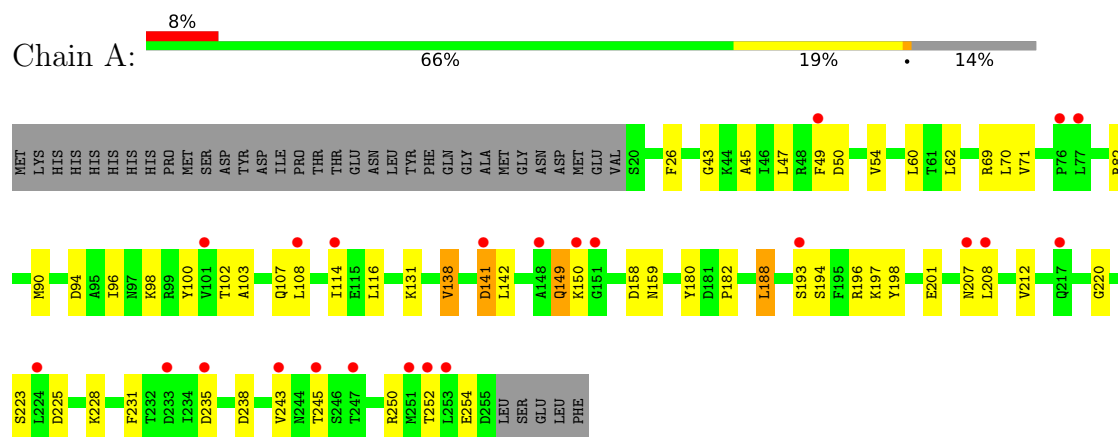
Mol	Chain	Residues	Atoms		ZeroOcc	AltConf
7	A	78	Total	O	0	0
			78	78		



### 3 Residue-property plots [i](#)

These plots are drawn for all protein, RNA, DNA and oligosaccharide chains in the entry. The first graphic for a chain summarises the proportions of the various outlier classes displayed in the second graphic. The second graphic shows the sequence view annotated by issues in geometry and electron density. Residues are color-coded according to the number of geometric quality criteria for which they contain at least one outlier: green = 0, yellow = 1, orange = 2 and red = 3 or more. A red dot above a residue indicates a poor fit to the electron density ( $RSRZ > 2$ ). Stretches of 2 or more consecutive residues without any outlier are shown as a green connector. Residues present in the sample, but not in the model, are shown in grey.

- Molecule 1: DUF4292 domain-containing protein



## 4 Data and refinement statistics

Property	Value	Source
Space group	P 65 2 2	Depositor
Cell constants a, b, c, $\alpha$ , $\beta$ , $\gamma$	94.68Å 94.68Å 104.94Å 90.00° 90.00° 120.00°	Depositor
Resolution (Å)	47.34 – 2.10 47.34 – 2.10	Depositor EDS
% Data completeness (in resolution range)	99.9 (47.34-2.10) 87.4 (47.34-2.10)	Depositor EDS
$R_{merge}$	0.25	Depositor
$R_{sym}$	(Not available)	Depositor
$\langle I/\sigma(I) \rangle$ <sup>1</sup>	0.67 (at 2.10Å)	Xtriage
Refinement program	PHENIX 1.21	Depositor
R, $R_{free}$	0.227 , 0.278 0.227 , 0.277	Depositor DCC
$R_{free}$ test set	839 reflections (5.00%)	wwPDB-VP
Wilson B-factor (Å <sup>2</sup> )	36.2	Xtriage
Anisotropy	0.044	Xtriage
Bulk solvent $k_{sol}$ (e/Å <sup>3</sup> ), $B_{sol}$ (Å <sup>2</sup> )	0.33 , 54.4	EDS
L-test for twinning <sup>2</sup>	$\langle  L  \rangle = 0.50$ , $\langle L^2 \rangle = 0.33$	Xtriage
Estimated twinning fraction	No twinning to report.	Xtriage
$F_o, F_c$ correlation	0.94	EDS
Total number of atoms	2160	wwPDB-VP
Average B, all atoms (Å <sup>2</sup> )	55.0	wwPDB-VP

Xtriage's analysis on translational NCS is as follows: *The largest off-origin peak in the Patterson function is 4.80% of the height of the origin peak. No significant pseudotranslation is detected.*

<sup>1</sup>Intensities estimated from amplitudes.

<sup>2</sup>Theoretical values of  $\langle |L| \rangle$ ,  $\langle L^2 \rangle$  for acentric reflections are 0.5, 0.333 respectively for untwinned datasets, and 0.375, 0.2 for perfectly twinned datasets.

## 5 Model quality [i](#)

### 5.1 Standard geometry [i](#)

Bond lengths and bond angles in the following residue types are not validated in this section: ZN, ACT, SO4, P4G, PEG

The Z score for a bond length (or angle) is the number of standard deviations the observed value is removed from the expected value. A bond length (or angle) with  $|Z| > 5$  is considered an outlier worth inspection. RMSZ is the root-mean-square of all Z scores of the bond lengths (or angles).

Mol	Chain	Bond lengths		Bond angles	
		RMSZ	$\# Z  > 5$	RMSZ	$\# Z  > 5$
1	A	0.11	0/1909	0.26	0/2585

There are no bond length outliers.

There are no bond angle outliers.

There are no chirality outliers.

There are no planarity outliers.

### 5.2 Too-close contacts [i](#)

In the following table, the Non-H and H(model) columns list the number of non-hydrogen atoms and hydrogen atoms in the chain respectively. The H(added) column lists the number of hydrogen atoms added and optimized by MolProbity. The Clashes column lists the number of clashes within the asymmetric unit, whereas Symm-Clashes lists symmetry-related clashes.

Mol	Chain	Non-H	H(model)	H(added)	Clashes	Symm-Clashes
1	A	1873	0	1891	49	0
2	A	5	0	0	1	0
3	A	21	30	30	3	0
4	A	20	15	15	6	0
5	A	44	72	72	5	0
6	A	2	0	0	0	0
7	A	78	0	0	0	0
All	All	2043	117	2008	49	0

The all-atom clashscore is defined as the number of clashes found per 1000 atoms (including hydrogen atoms). The all-atom clashscore for this structure is 12.

All (49) close contacts within the same asymmetric unit are listed below, sorted by their clash magnitude.

Atom-1	Atom-2	Interatomic distance (Å)	Clash overlap (Å)
1:A:245:THR:HG22	5:A:310:P4G:H13	1.47	0.95
1:A:149:GLN:HG2	1:A:150:LYS:H	1.31	0.94
1:A:138:VAL:HG23	1:A:141:ASP:OD1	1.72	0.90
1:A:252:THR:HG22	1:A:254:GLU:H	1.46	0.78
1:A:90:MET:HE1	1:A:108:LEU:HD22	1.68	0.76
1:A:49:PHE:HD2	1:A:50:ASP:OD1	1.76	0.68
1:A:102:THR:HG22	1:A:250:ARG:NH2	2.12	0.65
1:A:47:LEU:HB3	1:A:54:VAL:HG13	1.79	0.64
1:A:220:GLY:HA3	5:A:313:P4G:H72	1.81	0.62
1:A:149:GLN:HG2	1:A:150:LYS:N	2.09	0.62
1:A:47:LEU:HB3	1:A:54:VAL:CG1	2.30	0.62
1:A:252:THR:HG22	1:A:254:GLU:N	2.16	0.60
1:A:235:ASP:HB3	1:A:238:ASP:OD2	2.02	0.59
1:A:60:LEU:HD13	1:A:70:LEU:HD21	1.85	0.59
1:A:193:SER:HB3	2:A:301:SO4:O4	2.05	0.57
1:A:45:ALA:HA	1:A:223:SER:O	2.06	0.55
1:A:245:THR:CG2	5:A:310:P4G:H13	2.29	0.55
1:A:220:GLY:HA3	5:A:313:P4G:C7	2.37	0.54
1:A:131:LYS:HD3	4:A:305:ACT:H1	1.90	0.54
1:A:180:TYR:CE2	4:A:306:ACT:H1	2.42	0.54
1:A:194:SER:HB2	3:A:303:PEG:H12	1.89	0.54
1:A:243:VAL:H	5:A:310:P4G:H62	1.72	0.53
1:A:69:ARG:HD3	1:A:238:ASP:O	2.07	0.53
1:A:196:ARG:HD2	3:A:303:PEG:H21	1.90	0.53
1:A:197:LYS:H	4:A:309:ACT:C	2.24	0.50
1:A:201:GLU:HG3	1:A:231:PHE:CZ	2.47	0.50
1:A:103:ALA:HA	1:A:107:GLN:OE1	2.13	0.49
1:A:82:ARG:HE	3:A:302:PEG:H22	1.77	0.49
1:A:100:TYR:CG	1:A:243:VAL:HG11	2.47	0.48
1:A:207:ASN:C	1:A:208:LEU:HD12	2.38	0.48
1:A:252:THR:CG2	1:A:254:GLU:H	2.20	0.48
1:A:26:PHE:HB2	1:A:142:LEU:CD1	2.43	0.48
1:A:158:ASP:HB2	4:A:305:ACT:OXT	2.13	0.48
1:A:49:PHE:CD2	1:A:50:ASP:OD1	2.63	0.47
1:A:114:ILE:HG22	1:A:116:LEU:HG	1.97	0.47
1:A:94:ASP:O	1:A:98:LYS:N	2.48	0.46
1:A:50:ASP:OD1	1:A:50:ASP:N	2.49	0.45
1:A:188:LEU:HD23	1:A:212:VAL:HG22	1.99	0.45
1:A:228:LYS:HD3	1:A:228:LYS:HA	1.72	0.44
1:A:43:GLY:HA3	1:A:225:ASP:O	2.17	0.44
1:A:201:GLU:HG3	1:A:231:PHE:HZ	1.81	0.44
1:A:100:TYR:O	1:A:250:ARG:HA	2.16	0.44

*Continued on next page...*

*Continued from previous page...*

Atom-1	Atom-2	Interatomic distance (Å)	Clash overlap (Å)
1:A:197:LYS:HE2	1:A:198:TYR:CZ	2.54	0.43
1:A:159:ASN:H	4:A:305:ACT:C	2.32	0.43
1:A:62:LEU:C	1:A:62:LEU:HD23	2.44	0.42
1:A:71:VAL:HG22	1:A:82:ARG:HG2	2.02	0.42
1:A:180:TYR:CE1	1:A:182:PRO:HA	2.54	0.41
1:A:149:GLN:CG	1:A:150:LYS:H	2.11	0.41
1:A:180:TYR:HE2	4:A:306:ACT:H1	1.82	0.40

There are no symmetry-related clashes.

## 5.3 Torsion angles [i](#)

### 5.3.1 Protein backbone [i](#)

In the following table, the Percentiles column shows the percent Ramachandran outliers of the chain as a percentile score with respect to all X-ray entries followed by that with respect to entries of similar resolution.

The Analysed column shows the number of residues for which the backbone conformation was analysed, and the total number of residues.

Mol	Chain	Analysed	Favoured	Allowed	Outliers	Percentiles
1	A	234/274 (85%)	226 (97%)	6 (3%)	2 (1%)	14 10

All (2) Ramachandran outliers are listed below:

Mol	Chain	Res	Type
1	A	149	GLN
1	A	96	ILE

### 5.3.2 Protein sidechains [i](#)

In the following table, the Percentiles column shows the percent sidechain outliers of the chain as a percentile score with respect to all X-ray entries followed by that with respect to entries of similar resolution.

The Analysed column shows the number of residues for which the sidechain conformation was analysed, and the total number of residues.

Mol	Chain	Analysed	Rotameric	Outliers	Percentiles
1	A	205/240 (85%)	202 (98%)	3 (2%)	57 65

All (3) residues with a non-rotameric sidechain are listed below:

Mol	Chain	Res	Type
1	A	138	VAL
1	A	141	ASP
1	A	188	LEU

Sometimes sidechains can be flipped to improve hydrogen bonding and reduce clashes. All (3) such sidechains are listed below:

Mol	Chain	Res	Type
1	A	51	GLN
1	A	55	ASN
1	A	97	ASN

### 5.3.3 RNA [i](#)

There are no RNA molecules in this entry.

## 5.4 Non-standard residues in protein, DNA, RNA chains [i](#)

There are no non-standard protein/DNA/RNA residues in this entry.

## 5.5 Carbohydrates [i](#)

There are no oligosaccharides in this entry.

## 5.6 Ligand geometry [i](#)

Of 15 ligands modelled in this entry, 2 are monoatomic - leaving 13 for Mogul analysis.

In the following table, the Counts columns list the number of bonds (or angles) for which Mogul statistics could be retrieved, the number of bonds (or angles) that are observed in the model and the number of bonds (or angles) that are defined in the Chemical Component Dictionary. The Link column lists molecule types, if any, to which the group is linked. The Z score for a bond length (or angle) is the number of standard deviations the observed value is removed from the expected value. A bond length (or angle) with  $|Z| > 2$  is considered an outlier worth inspection. RMSZ is the root-mean-square of all Z scores of the bond lengths (or angles).

Mol	Type	Chain	Res	Link	Bond lengths			Bond angles		
					Counts	RMSZ	# Z  > 2	Counts	RMSZ	# Z  > 2
5	P4G	A	313	-	10,10,10	0.41	0	9,9,9	0.19	0
5	P4G	A	311	-	10,10,10	0.37	0	9,9,9	0.20	0
4	ACT	A	309	-	3,3,3	1.26	0	3,3,3	1.14	0
2	SO4	A	301	-	4,4,4	0.67	0	6,6,6	0.09	0
4	ACT	A	306	-	3,3,3	1.29	0	3,3,3	0.95	0
4	ACT	A	307	-	3,3,3	1.32	0	3,3,3	0.97	0
4	ACT	A	305	-	3,3,3	1.33	0	3,3,3	0.85	0
4	ACT	A	308	-	3,3,3	1.31	0	3,3,3	0.92	0
5	P4G	A	310	-	10,10,10	0.36	0	9,9,9	0.19	0
5	P4G	A	312	-	10,10,10	0.38	0	9,9,9	0.22	0
3	PEG	A	303	-	6,6,6	0.30	0	5,5,5	0.28	0
3	PEG	A	304	-	6,6,6	0.29	0	5,5,5	0.18	0
3	PEG	A	302	-	6,6,6	0.26	0	5,5,5	0.33	0

In the following table, the Chirals column lists the number of chiral outliers, the number of chiral centers analysed, the number of these observed in the model and the number defined in the Chemical Component Dictionary. Similar counts are reported in the Torsion and Rings columns. '-' means no outliers of that kind were identified.

Mol	Type	Chain	Res	Link	Chirals	Torsions	Rings
5	P4G	A	313	-	-	2/8/8/8	-
5	P4G	A	311	-	-	4/8/8/8	-
5	P4G	A	310	-	-	3/8/8/8	-
5	P4G	A	312	-	-	3/8/8/8	-
3	PEG	A	303	-	-	1/4/4/4	-
3	PEG	A	304	-	-	2/4/4/4	-
3	PEG	A	302	-	-	1/4/4/4	-

There are no bond length outliers.

There are no bond angle outliers.

There are no chirality outliers.

All (16) torsion outliers are listed below:

Mol	Chain	Res	Type	Atoms
5	A	312	P4G	O3-C5-C6-O4
5	A	311	P4G	O3-C5-C6-O4
5	A	313	P4G	O3-C5-C6-O4
5	A	313	P4G	O2-C3-C4-O3
3	A	304	PEG	O1-C1-C2-O2
5	A	310	P4G	C6-C5-O3-C4

*Continued on next page...*

*Continued from previous page...*

Mol	Chain	Res	Type	Atoms
5	A	310	P4G	O3-C5-C6-O4
5	A	312	P4G	C8-C7-O4-C6
3	A	304	PEG	C4-C3-O2-C2
3	A	302	PEG	O1-C1-C2-O2
5	A	310	P4G	O2-C3-C4-O3
5	A	311	P4G	C1-C2-O2-C3
5	A	312	P4G	C1-C2-O2-C3
5	A	311	P4G	C3-C4-O3-C5
3	A	303	PEG	O1-C1-C2-O2
5	A	311	P4G	O2-C3-C4-O3

There are no ring outliers.

8 monomers are involved in 15 short contacts:

Mol	Chain	Res	Type	Clashes	Symm-Clashes
5	A	313	P4G	2	0
4	A	309	ACT	1	0
2	A	301	SO4	1	0
4	A	306	ACT	2	0
4	A	305	ACT	3	0
5	A	310	P4G	3	0
3	A	303	PEG	2	0
3	A	302	PEG	1	0

## 5.7 Other polymers [i](#)

There are no such residues in this entry.

## 5.8 Polymer linkage issues [i](#)

There are no chain breaks in this entry.



## 6 Fit of model and data

### 6.1 Protein, DNA and RNA chains

In the following table, the column labelled ‘#RSRZ> 2’ contains the number (and percentage) of RSRZ outliers, followed by percent RSRZ outliers for the chain as percentile scores relative to all X-ray entries and entries of similar resolution. The OWAB column contains the minimum, median, 95<sup>th</sup> percentile and maximum values of the occupancy-weighted average B-factor per residue. The column labelled ‘Q< 0.9’ lists the number of (and percentage) of residues with an average occupancy less than 0.9.

Mol	Chain	Analysed	<RSRZ>	#RSRZ>2	OWAB(Å <sup>2</sup> )	Q<0.9
1	A	236/274 (86%)	0.73	23 (9%) <b>13</b> <b>14</b>	31, 48, 89, 121	0

All (23) RSRZ outliers are listed below:

Mol	Chain	Res	Type	RSRZ
1	A	151	GLY	4.7
1	A	253	LEU	4.7
1	A	77	LEU	4.1
1	A	245	THR	3.3
1	A	247	THR	2.8
1	A	233	ASP	2.7
1	A	141	ASP	2.6
1	A	217	GLN	2.6
1	A	207	ASN	2.6
1	A	252	THR	2.5
1	A	108	LEU	2.5
1	A	208	LEU	2.5
1	A	76	PRO	2.5
1	A	148	ALA	2.4
1	A	193	SER	2.2
1	A	101	VAL	2.2
1	A	224	LEU	2.2
1	A	49	PHE	2.2
1	A	251	MET	2.2
1	A	114	ILE	2.1
1	A	150	LYS	2.1
1	A	235	ASP	2.0
1	A	243	VAL	2.0

## 6.2 Non-standard residues in protein, DNA, RNA chains [i](#)

There are no non-standard protein/DNA/RNA residues in this entry.

## 6.3 Carbohydrates [i](#)

There are no oligosaccharides in this entry.

## 6.4 Ligands [i](#)

In the following table, the Atoms column lists the number of modelled atoms in the group and the number defined in the chemical component dictionary. The B-factors column lists the minimum, median, 95<sup>th</sup> percentile and maximum values of B factors of atoms in the group. The column labelled 'Q< 0.9' lists the number of atoms with occupancy less than 0.9.

Mol	Type	Chain	Res	Atoms	RSCC	RSR	B-factors( $\text{\AA}^2$ )	Q<0.9
4	ACT	A	306	4/4	0.65	0.19	55,61,66,67	0
5	P4G	A	310	11/11	0.65	0.19	77,93,100,100	29
5	P4G	A	312	11/11	0.72	0.17	57,78,114,119	0
5	P4G	A	311	11/11	0.79	0.17	67,89,107,108	0
4	ACT	A	305	4/4	0.79	0.16	44,53,69,81	0
5	P4G	A	313	11/11	0.80	0.14	51,74,88,90	0
2	SO4	A	301	5/5	0.81	0.16	47,59,73,89	5
3	PEG	A	302	7/7	0.81	0.16	35,57,70,70	17
4	ACT	A	307	4/4	0.86	0.11	58,70,76,78	0
4	ACT	A	309	4/4	0.86	0.29	27,64,78,82	0
3	PEG	A	304	7/7	0.86	0.12	36,46,70,70	17
4	ACT	A	308	4/4	0.87	0.12	60,73,84,84	0
3	PEG	A	303	7/7	0.87	0.13	36,49,67,71	17
6	ZN	A	315	1/1	0.89	0.13	111,111,111,111	0
6	ZN	A	314	1/1	0.98	0.08	57,57,57,57	0

## 6.5 Other polymers [i](#)

There are no such residues in this entry.