



wwPDB X-ray Structure Validation Summary Report ⓘ

Apr 5, 2026 – 12:04 AM UTC

PDB ID : 9TAQ / pdb_00009taq
Title : De novo photoenzyme variant ABLE-E116C-TXT H49A-L42T (photoABLE1 precursor) in complex with substrate
Authors : Boesen, B.; Heider, A.; O'Shea, J.M.; Groll, M.; Bach, T.; Zeymer, C.
Deposited on : 2025-11-18
Resolution : 1.40 Å(reported)

This is a wwPDB X-ray Structure Validation Summary Report for a publicly released PDB entry.

We welcome your comments at validation@mail.wwpdb.org

A user guide is available at

<https://www.wwpdb.org/validation/2017/XrayValidationReportHelp>

with specific help available everywhere you see the ⓘ symbol.

The types of validation reports are described at

<http://www.wwpdb.org/validation/2017/FAQs#types>.

The following versions of software and data (see [references ⓘ](#)) were used in the production of this report:

MolProbity	:	4-5-2 with Phenix2.0
Mogul	:	2022.3.0, CSD as543be (2022)
Xtriage (Phenix)	:	2.0
EDS	:	3.0
Buster-report	:	wwPDB partial adaption of 1.1.7 (2018)
Percentile statistics	:	20250101.v01 (using entries in the PDB archive January 1st 2025)
CCP4	:	9.0.010 (Gargrove)
Density-Fitness	:	1.0.12
Ideal geometry (proteins)	:	Engh & Huber (2001)
Ideal geometry (DNA, RNA)	:	Parkinson et al. (1996)
Validation Pipeline (wwPDB-VP)	:	2.49

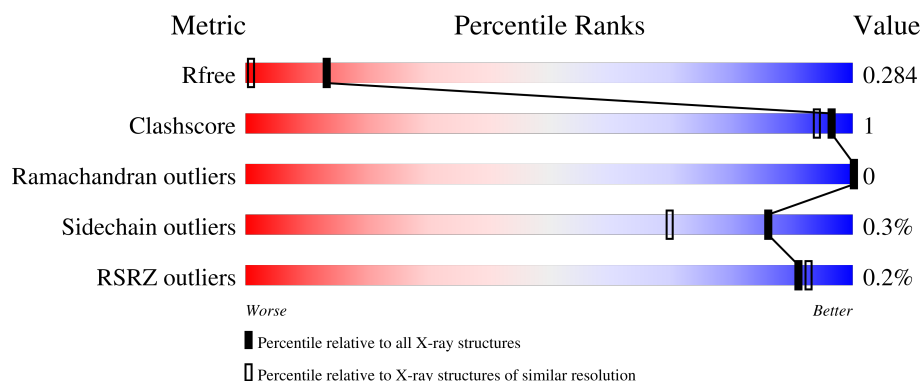
1 Overall quality at a glance

The following experimental techniques were used to determine the structure:

X-RAY DIFFRACTION

The reported resolution of this entry is 1.40 Å.

Percentile scores (ranging between 0-100) for global validation metrics of the entry are shown in the following graphic. The table shows the number of entries on which the scores are based.



Metric	Whole archive (#Entries)	Similar resolution (#Entries, resolution range(Å))
R_{free}	180053	2563 (1.40-1.40)
Clashscore	190562	2660 (1.40-1.40)
Ramachandran outliers	187476	2611 (1.40-1.40)
Sidechain outliers	187428	2610 (1.40-1.40)
RSRZ outliers	180081	2561 (1.40-1.40)

The table below summarises the geometric issues observed across the polymeric chains and their fit to the electron density. The red, orange, yellow and green segments of the lower bar indicate the fraction of residues that contain outliers for ≥ 3 , 2, 1 and 0 types of geometric quality criteria respectively. A grey segment represents the fraction of residues that are not modelled. The numeric value for each fraction is indicated below the corresponding segment, with a dot representing fractions $\leq 5\%$. The upper red bar (where present) indicates the fraction of residues that have poor fit to the electron density. The numeric value is given above the bar.

Mol	Chain	Length	Quality of chain
1	A	126	<div> <div style="width: 98%;"></div> <div>98%</div> </div>
1	B	126	<div> <div style="width: 97%;"></div> <div>97%</div> </div>
1	C	126	<div> <div style="width: 95%;"></div> <div>95%</div> </div>
1	D	126	<div> <div style="width: 97%;"></div> <div>97%</div> </div>

2 Entry composition [i](#)

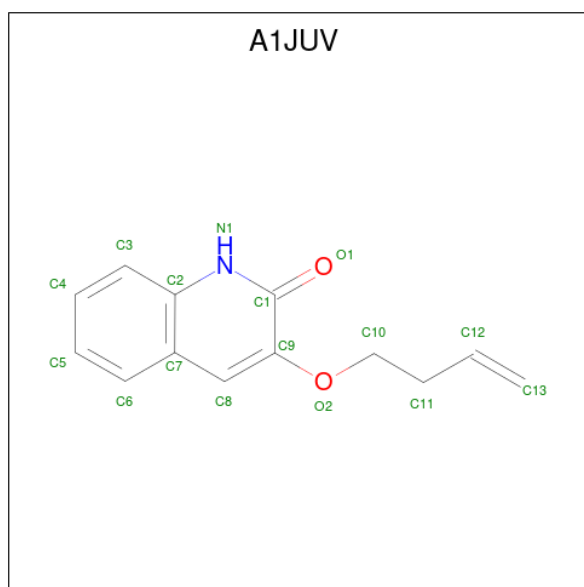
There are 5 unique types of molecules in this entry. The entry contains 4333 atoms, of which 0 are hydrogens and 0 are deuteriums.

In the tables below, the ZeroOcc column contains the number of atoms modelled with zero occupancy, the AltConf column contains the number of residues with at least one atom in alternate conformation and the Trace column contains the number of residues modelled with at most 2 atoms.

- Molecule 1 is a protein called De novo photoenzyme variant ABLE.

Mol	Chain	Residues	Atoms					ZeroOcc	AltConf	Trace
1	A	126	Total	C	N	O	S	0	0	0
			962	601	164	193	4			
1	B	126	Total	C	N	O	S	0	1	0
			968	604	165	195	4			
1	C	125	Total	C	N	O	S	0	0	0
			953	595	163	191	4			
1	D	126	Total	C	N	O	S	0	1	0
			971	607	166	194	4			

- Molecule 2 is 3-but-3-enoxy-1 {H}-quinolin-2-one (CCD ID: A1JUV) (formula: C₁₃H₁₃NO₂) (labeled as "Ligand of Interest" by depositor).



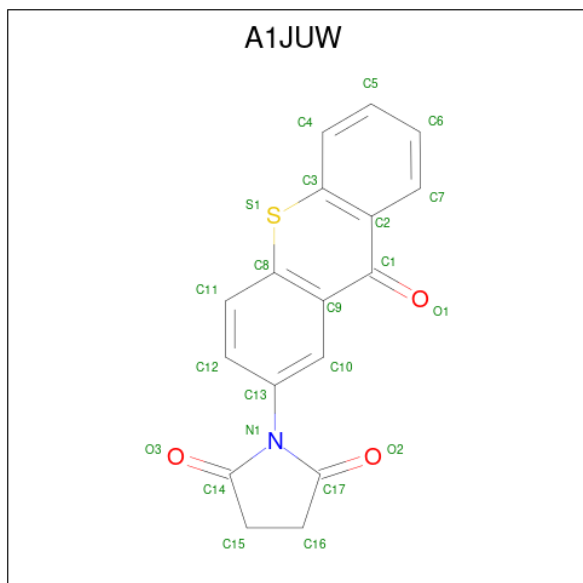
Mol	Chain	Residues	Atoms				ZeroOcc	AltConf
2	A	1	Total	C	N	O	0	0
			16	13	1	2		
2	B	1	Total	C	N	O	0	0
			16	13	1	2		

Continued on next page...

Continued from previous page...

Mol	Chain	Residues	Atoms				ZeroOcc	AltConf
2	C	1	Total	C	N	O	0	0
			16	13	1	2		
2	D	1	Total	C	N	O	0	0
			16	13	1	2		

- Molecule 3 is 1-(9-oxidanylideneethioxanthen-2-yl)pyrrolidine-2,5-dione (CCD ID: A1J UW) (formula: C₁₇H₁₁NO₃S) (labeled as "Ligand of Interest" by depositor).



Mol	Chain	Residues	Atoms					ZeroOcc	AltConf
3	A	1	Total	C	N	O	S	0	0
			22	17	1	3	1		
3	B	1	Total	C	N	O	S	0	0
			22	17	1	3	1		
3	C	1	Total	C	N	O	S	0	0
			22	17	1	3	1		
3	D	1	Total	C	N	O	S	0	0
			22	17	1	3	1		

- Molecule 4 is SODIUM ION (CCD ID: NA) (formula: Na).

Mol	Chain	Residues	Atoms		ZeroOcc	AltConf
4	A	2	Total	Na	0	0
			2	2		
4	B	1	Total	Na	0	0
			1	1		
4	C	1	Total	Na	0	0
			1	1		

Continued on next page...

Continued from previous page...

Mol	Chain	Residues	Atoms		ZeroOcc	AltConf
4	D	1	Total 1	Na 1	0	0

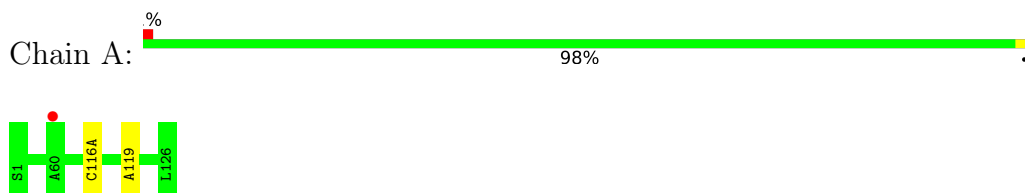
- Molecule 5 is water.

Mol	Chain	Residues	Atoms		ZeroOcc	AltConf
5	A	75	Total 75	O 75	0	0
5	B	87	Total 87	O 87	0	0
5	C	93	Total 93	O 93	0	0
5	D	67	Total 67	O 67	0	0

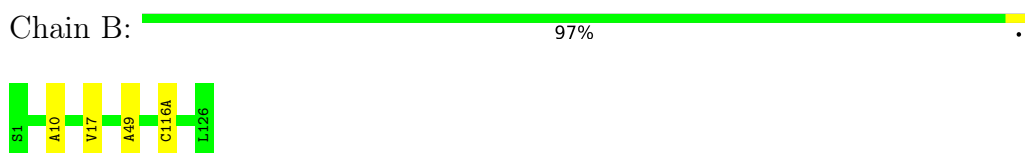
3 Residue-property plots [i](#)

These plots are drawn for all protein, RNA, DNA and oligosaccharide chains in the entry. The first graphic for a chain summarises the proportions of the various outlier classes displayed in the second graphic. The second graphic shows the sequence view annotated by issues in geometry and electron density. Residues are color-coded according to the number of geometric quality criteria for which they contain at least one outlier: green = 0, yellow = 1, orange = 2 and red = 3 or more. A red dot above a residue indicates a poor fit to the electron density ($RSRZ > 2$). Stretches of 2 or more consecutive residues without any outlier are shown as a green connector. Residues present in the sample, but not in the model, are shown in grey.

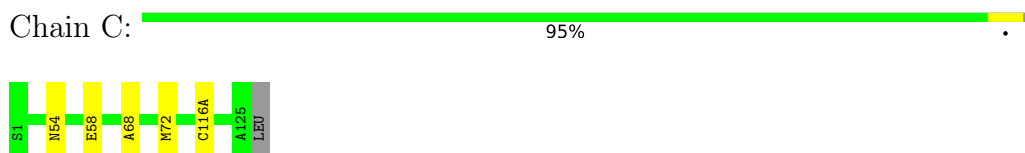
- Molecule 1: De novo photoenzyme variant ABLE



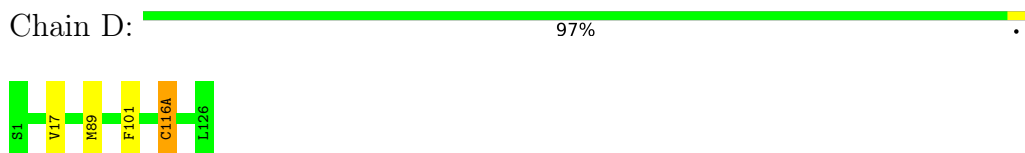
- Molecule 1: De novo photoenzyme variant ABLE



- Molecule 1: De novo photoenzyme variant ABLE



- Molecule 1: De novo photoenzyme variant ABLE



4 Data and refinement statistics

Property	Value	Source
Space group	P 1	Depositor
Cell constants a, b, c, α , β , γ	39.79Å 40.00Å 87.41Å 94.48° 97.94° 110.75°	Depositor
Resolution (Å)	30.00 – 1.40 30.00 – 1.40	Depositor EDS
% Data completeness (in resolution range)	93.3 (30.00-1.40) 93.3 (30.00-1.40)	Depositor EDS
R_{merge}	0.07	Depositor
R_{sym}	(Not available)	Depositor
$\langle I/\sigma(I) \rangle$ ¹	1.56 (at 1.40Å)	Xtriage
Refinement program	REFMAC 5.8.0267	Depositor
R, R_{free}	0.260 , 0.296 0.267 , 0.284	Depositor DCC
R_{free} test set	4545 reflections (5.00%)	wwPDB-VP
Wilson B-factor (Å ²)	17.0	Xtriage
Anisotropy	0.101	Xtriage
Bulk solvent k_{sol} (e/Å ³), B_{sol} (Å ²)	0.41 , 54.8	EDS
L-test for twinning ²	$\langle L \rangle = 0.57$, $\langle L^2 \rangle = 0.41$	Xtriage
Estimated twinning fraction	0.000 for -k,-h,-l	Xtriage
F_o, F_c correlation	0.94	EDS
Total number of atoms	4333	wwPDB-VP
Average B, all atoms (Å ²)	24.0	wwPDB-VP

Xtriage's analysis on translational NCS is as follows: *The analyses of the Patterson function reveals a significant off-origin peak that is 73.60 % of the origin peak, indicating pseudo-translational symmetry. The chance of finding a peak of this or larger height randomly in a structure without pseudo-translational symmetry is equal to 1.7848e-06. The detected translational NCS is most likely also responsible for the elevated intensity ratio.*

¹ Intensities estimated from amplitudes.

² Theoretical values of $\langle |L| \rangle$, $\langle L^2 \rangle$ for acentric reflections are 0.5, 0.333 respectively for untwinned datasets, and 0.375, 0.2 for perfectly twinned datasets.

5 Model quality [i](#)

5.1 Standard geometry [i](#)

Bond lengths and bond angles in the following residue types are not validated in this section: NA, A1JUW, A1JUV

The Z score for a bond length (or angle) is the number of standard deviations the observed value is removed from the expected value. A bond length (or angle) with $|Z| > 5$ is considered an outlier worth inspection. RMSZ is the root-mean-square of all Z scores of the bond lengths (or angles).

Mol	Chain	Bond lengths		Bond angles	
		RMSZ	$\# Z > 5$	RMSZ	$\# Z > 5$
1	A	0.98	0/972	1.41	2/1306 (0.2%)
1	B	0.99	0/978	1.40	2/1314 (0.2%)
1	C	0.99	0/963	1.49	2/1295 (0.2%)
1	D	0.98	0/981	1.47	2/1317 (0.2%)
All	All	0.99	0/3894	1.44	8/5232 (0.2%)

There are no bond length outliers.

The worst 5 of 8 bond angle outliers are listed below:

Mol	Chain	Res	Type	Atoms	Z	Observed(°)	Ideal(°)
1	A	116(A)	CYS	O-C-N	12.43	134.88	122.07
1	C	116(A)	CYS	O-C-N	12.40	134.84	122.07
1	B	116(A)	CYS	O-C-N	11.97	134.81	122.12
1	D	116(A)	CYS	O-C-N	11.51	134.32	122.12
1	B	116(A)	CYS	CA-C-O	-7.26	112.85	120.55

There are no chirality outliers.

There are no planarity outliers.

5.2 Too-close contacts [i](#)

In the following table, the Non-H and H(model) columns list the number of non-hydrogen atoms and hydrogen atoms in the chain respectively. The H(added) column lists the number of hydrogen atoms added and optimized by MolProbity. The Clashes column lists the number of clashes within the asymmetric unit, whereas Symm-Clashes lists symmetry-related clashes.

Mol	Chain	Non-H	H(model)	H(added)	Clashes	Symm-Clashes
1	A	962	0	955	1	0
1	B	968	0	959	3	0

Continued on next page...

Continued from previous page...

Mol	Chain	Non-H	H(model)	H(added)	Clashes	Symm-Clashes
1	C	953	0	943	2	0
1	D	971	0	967	2	0
2	A	16	0	0	0	0
2	B	16	0	0	0	0
2	C	16	0	0	0	0
2	D	16	0	0	0	0
3	A	22	0	0	1	0
3	B	22	0	0	3	0
3	C	22	0	0	0	0
3	D	22	0	0	1	0
4	A	2	0	0	0	0
4	B	1	0	0	0	0
4	C	1	0	0	0	0
4	D	1	0	0	0	0
5	A	75	0	0	0	0
5	B	87	0	0	0	0
5	C	93	0	0	0	0
5	D	67	0	0	0	0
All	All	4333	0	3824	8	0

The all-atom clashscore is defined as the number of clashes found per 1000 atoms (including hydrogen atoms). The all-atom clashscore for this structure is 1.

The worst 5 of 8 close contacts within the same asymmetric unit are listed below, sorted by their clash magnitude.

Atom-1	Atom-2	Interatomic distance (Å)	Clash overlap (Å)
1:D:17:VAL:HG21	3:D:202:A1JUW:C14	2.34	0.56
1:B:17:VAL:HG21	3:B:202:A1JUW:C14	2.41	0.50
1:B:49:ALA:HB1	3:B:202:A1JUW:C6	2.42	0.50
1:C:68:ALA:HB1	1:C:72:MET:HE3	1.95	0.48
1:D:89:MET:HG2	1:D:101:PHE:CE2	2.52	0.45

There are no symmetry-related clashes.

5.3 Torsion angles ⓘ

5.3.1 Protein backbone ⓘ

In the following table, the Percentiles column shows the percent Ramachandran outliers of the chain as a percentile score with respect to all X-ray entries followed by that with respect to entries of similar resolution.

The Analysed column shows the number of residues for which the backbone conformation was analysed, and the total number of residues.

Mol	Chain	Analysed	Favoured	Allowed	Outliers	Percentiles	
1	A	124/126 (98%)	123 (99%)	1 (1%)	0	100	100
1	B	125/126 (99%)	125 (100%)	0	0	100	100
1	C	123/126 (98%)	123 (100%)	0	0	100	100
1	D	125/126 (99%)	124 (99%)	1 (1%)	0	100	100
All	All	497/504 (99%)	495 (100%)	2 (0%)	0	100	100

There are no Ramachandran outliers to report.

5.3.2 Protein sidechains ⓘ

In the following table, the Percentiles column shows the percent sidechain outliers of the chain as a percentile score with respect to all X-ray entries followed by that with respect to entries of similar resolution.

The Analysed column shows the number of residues for which the sidechain conformation was analysed, and the total number of residues.

Mol	Chain	Analysed	Rotameric	Outliers	Percentiles	
1	A	96/96 (100%)	96 (100%)	0	100	100
1	B	97/96 (101%)	97 (100%)	0	100	100
1	C	95/96 (99%)	95 (100%)	0	100	100
1	D	97/96 (101%)	96 (99%)	1 (1%)	68	40
All	All	385/384 (100%)	384 (100%)	1 (0%)	86	70

All (1) residues with a non-rotameric sidechain are listed below:

Mol	Chain	Res	Type
1	D	116(A)	CYS

Sometimes sidechains can be flipped to improve hydrogen bonding and reduce clashes. There are no such sidechains identified.

5.3.3 RNA ⓘ

There are no RNA molecules in this entry.

5.4 Non-standard residues in protein, DNA, RNA chains [i](#)

There are no non-standard protein/DNA/RNA residues in this entry.

5.5 Carbohydrates [i](#)

There are no oligosaccharides in this entry.

5.6 Ligand geometry [i](#)

Of 13 ligands modelled in this entry, 5 are monoatomic - leaving 8 for Mogul analysis.

In the following table, the Counts columns list the number of bonds (or angles) for which Mogul statistics could be retrieved, the number of bonds (or angles) that are observed in the model and the number of bonds (or angles) that are defined in the Chemical Component Dictionary. The Link column lists molecule types, if any, to which the group is linked. The Z score for a bond length (or angle) is the number of standard deviations the observed value is removed from the expected value. A bond length (or angle) with $|Z| > 2$ is considered an outlier worth inspection. RMSZ is the root-mean-square of all Z scores of the bond lengths (or angles).

Mol	Type	Chain	Res	Link	Bond lengths			Bond angles		
					Counts	RMSZ	# $ Z > 2$	Counts	RMSZ	# $ Z > 2$
2	A1JUV	D	201	-	16,17,17	1.05	1 (6%)	18,22,22	0.39	0
3	A1JUW	C	202	1	25,25,25	0.64	0	37,37,37	1.75	7 (18%)
3	A1JUW	B	202	1	25,25,25	0.52	0	37,37,37	0.70	0
2	A1JUV	B	201	-	16,17,17	1.13	1 (6%)	18,22,22	0.58	0
2	A1JUV	A	201	-	16,17,17	1.10	1 (6%)	18,22,22	0.55	0
2	A1JUV	C	201	-	16,17,17	1.18	2 (12%)	18,22,22	0.42	0
3	A1JUW	A	202	1	25,25,25	0.70	0	37,37,37	1.70	6 (16%)
3	A1JUW	D	202	1	25,25,25	0.53	0	37,37,37	0.73	0

In the following table, the Chirals column lists the number of chiral outliers, the number of chiral centers analysed, the number of these observed in the model and the number defined in the Chemical Component Dictionary. Similar counts are reported in the Torsion and Rings columns. '-' means no outliers of that kind were identified.

Mol	Type	Chain	Res	Link	Chirals	Torsions	Rings
2	A1JUV	D	201	-	-	0/5/5/5	0/2/2/2
3	A1JUW	C	202	1	-	2/4/17/17	0/4/4/4
3	A1JUW	B	202	1	-	4/4/17/17	0/4/4/4
2	A1JUV	B	201	-	-	1/5/5/5	0/2/2/2
2	A1JUV	A	201	-	-	0/5/5/5	0/2/2/2

Continued on next page...

Continued from previous page...

Mol	Type	Chain	Res	Link	Chirals	Torsions	Rings
2	A1JUV	C	201	-	-	0/5/5/5	0/2/2/2
3	A1JUW	A	202	1	-	1/4/17/17	0/4/4/4
3	A1JUW	D	202	1	-	3/4/17/17	0/4/4/4

All (5) bond length outliers are listed below:

Mol	Chain	Res	Type	Atoms	Z	Observed(Å)	Ideal(Å)
2	A	201	A1JUV	C8-C9	3.69	1.37	1.33
2	C	201	A1JUV	C8-C9	3.59	1.37	1.33
2	B	201	A1JUV	C8-C9	3.45	1.37	1.33
2	D	201	A1JUV	C8-C9	3.20	1.37	1.33
2	C	201	A1JUV	O1-C1	2.07	1.27	1.23

The worst 5 of 13 bond angle outliers are listed below:

Mol	Chain	Res	Type	Atoms	Z	Observed(°)	Ideal(°)
3	A	202	A1JUW	C15-C16-C17	-5.09	100.03	105.24
3	C	202	A1JUW	C16-C15-C14	-5.00	100.11	105.24
3	C	202	A1JUW	C15-C16-C17	-4.82	100.30	105.24
3	A	202	A1JUW	C14-N1-C17	-4.07	110.18	112.81
3	A	202	A1JUW	C16-C15-C14	-4.03	101.11	105.24

There are no chirality outliers.

5 of 11 torsion outliers are listed below:

Mol	Chain	Res	Type	Atoms
3	B	202	A1JUW	C10-C13-N1-C17
3	B	202	A1JUW	C12-C13-N1-C17
3	B	202	A1JUW	C10-C13-N1-C14
2	B	201	A1JUV	O2-C10-C11-C12
3	D	202	A1JUW	C10-C13-N1-C17

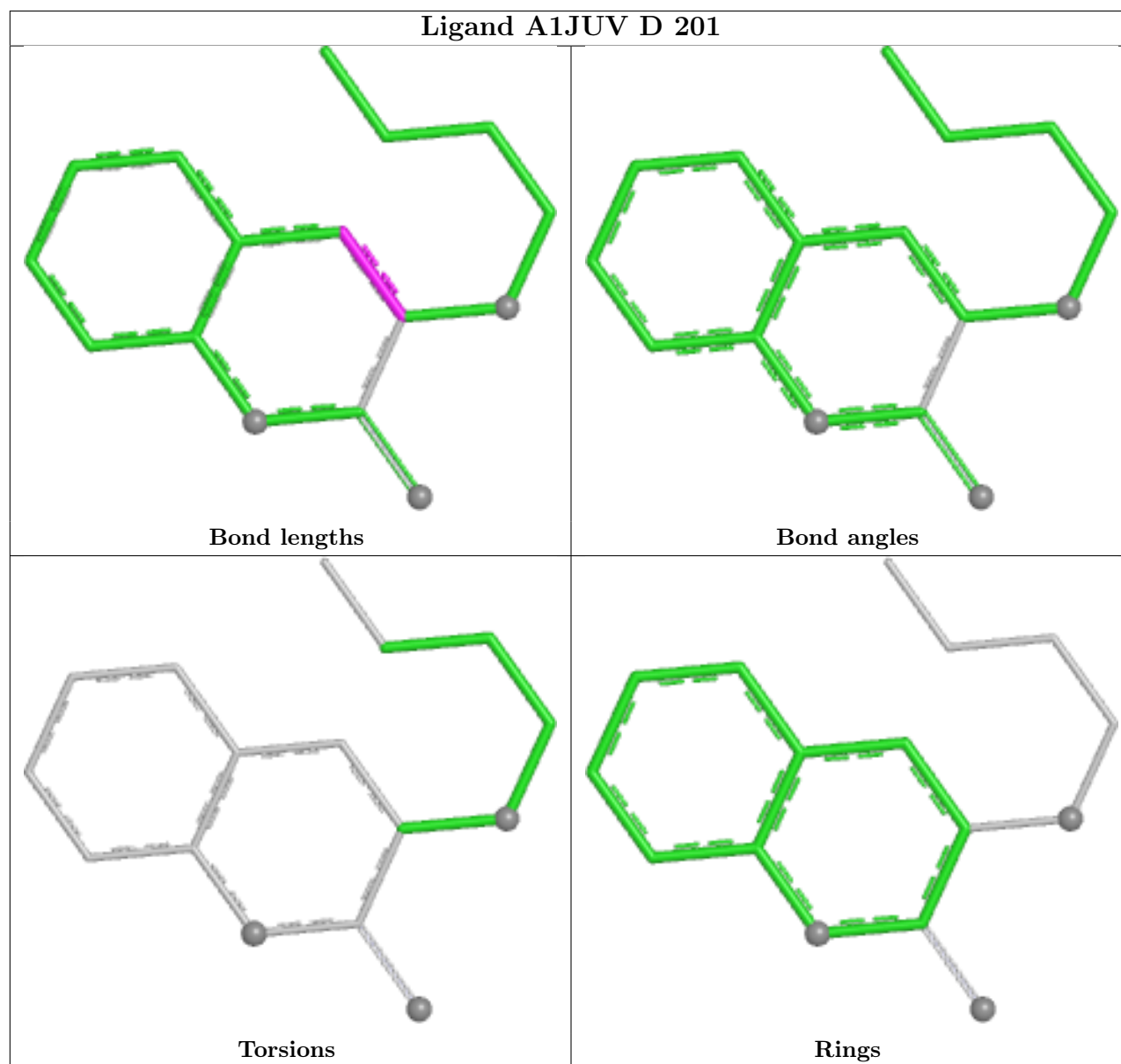
There are no ring outliers.

3 monomers are involved in 5 short contacts:

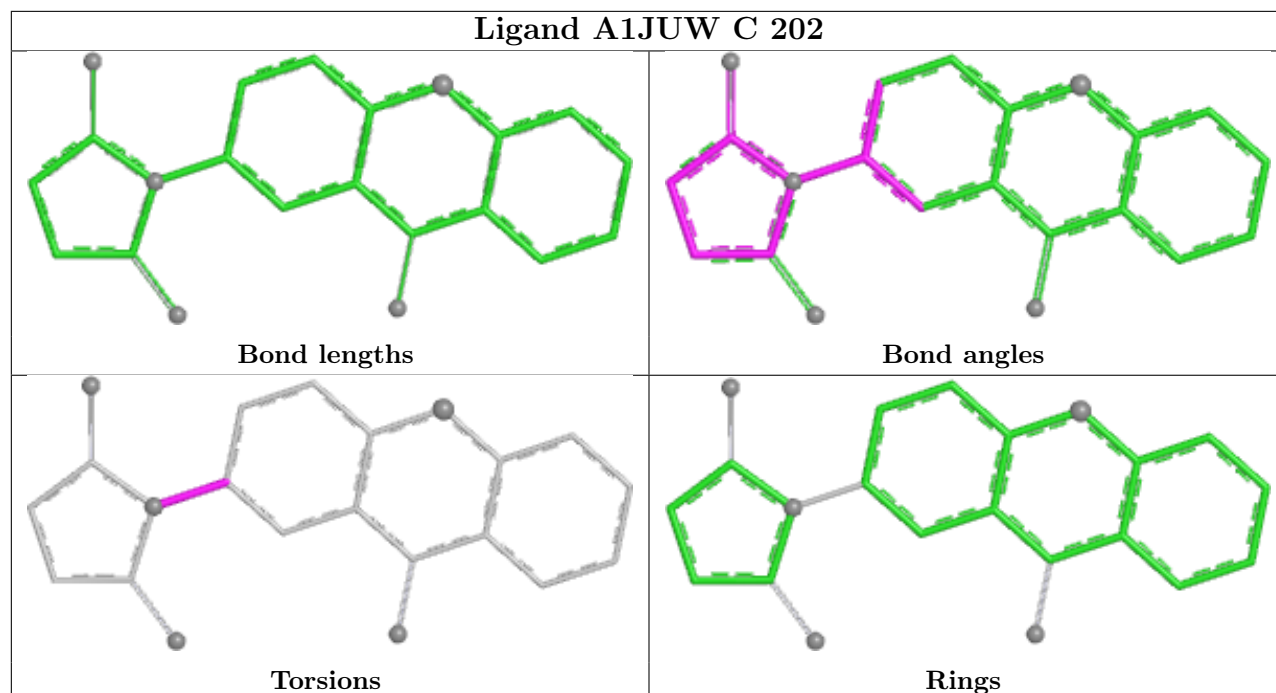
Mol	Chain	Res	Type	Clashes	Symm-Clashes
3	B	202	A1JUW	3	0
3	A	202	A1JUW	1	0
3	D	202	A1JUW	1	0

The following is a two-dimensional graphical depiction of Mogul quality analysis of bond lengths,

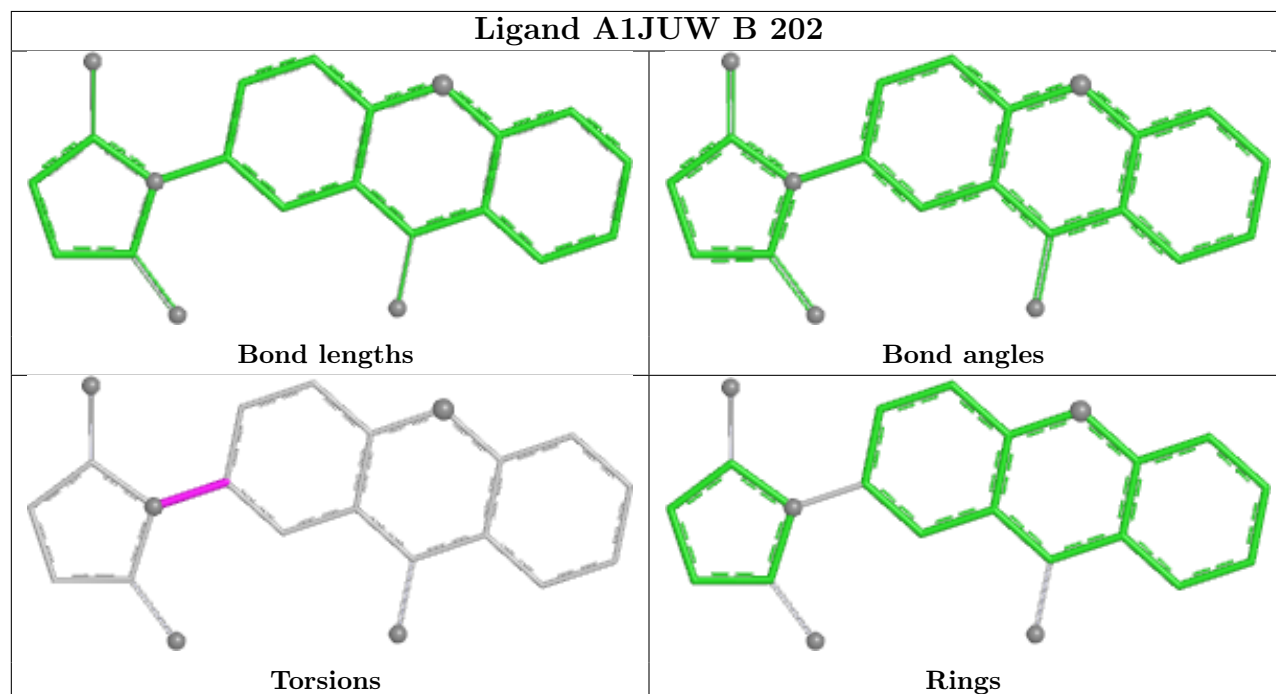
bond angles, torsion angles, and ring geometry for all instances of the Ligand of Interest. In addition, ligands with molecular weight > 250 and outliers as shown on the validation Tables will also be included. For torsion angles, if less than 5% of the Mogul distribution of torsion angles is within 10 degrees of the torsion angle in question, then that torsion angle is considered an outlier. Any bond that is central to one or more torsion angles identified as an outlier by Mogul will be highlighted in the graph. For rings, the root-mean-square deviation (RMSD) between the ring in question and similar rings identified by Mogul is calculated over all ring torsion angles. If the average RMSD is greater than 60 degrees and the minimal RMSD between the ring in question and any Mogul-identified rings is also greater than 60 degrees, then that ring is considered an outlier. The outliers are highlighted in purple. The color gray indicates Mogul did not find sufficient equivalents in the CSD to analyse the geometry.



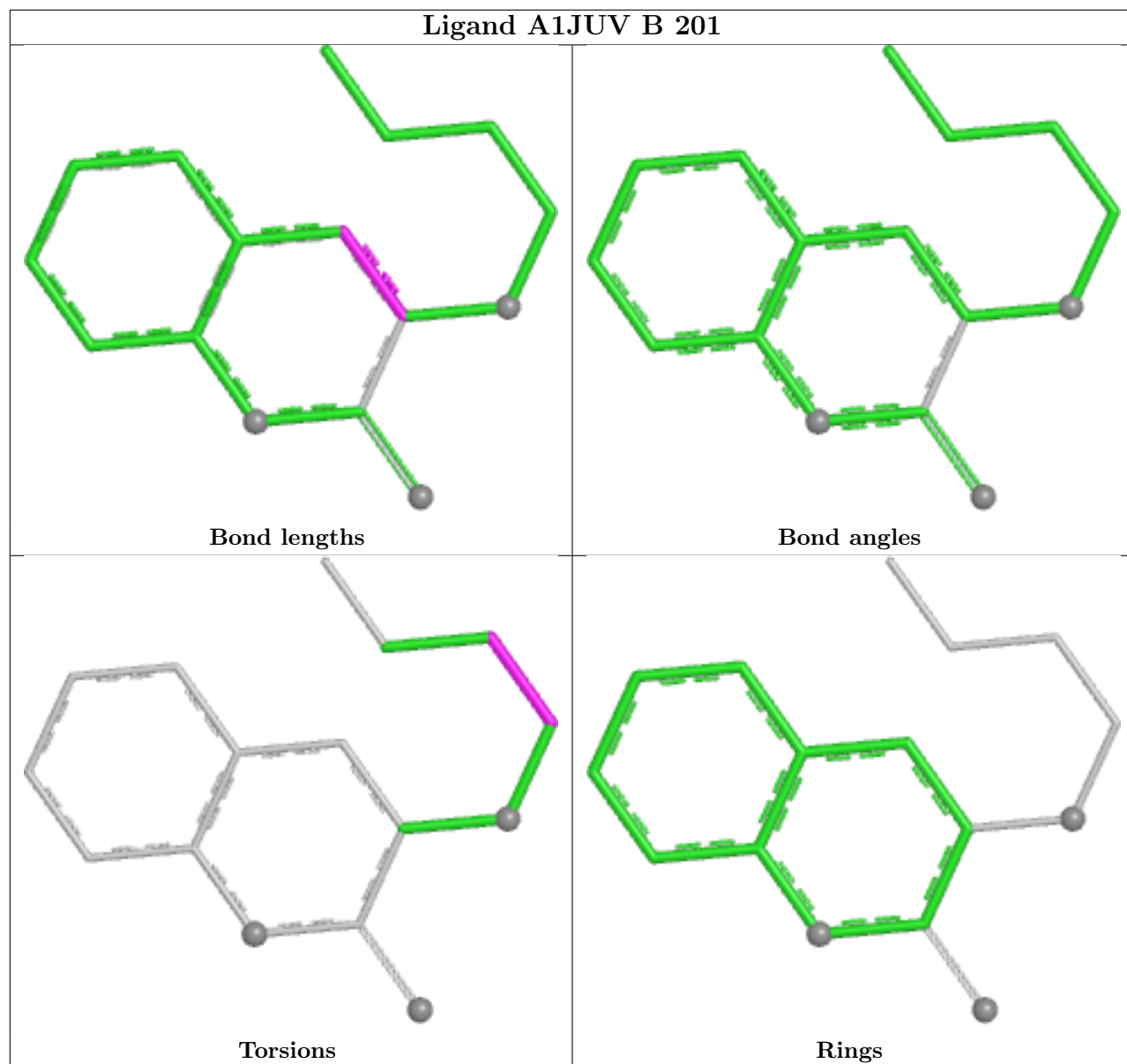
Ligand A1JUW C 202



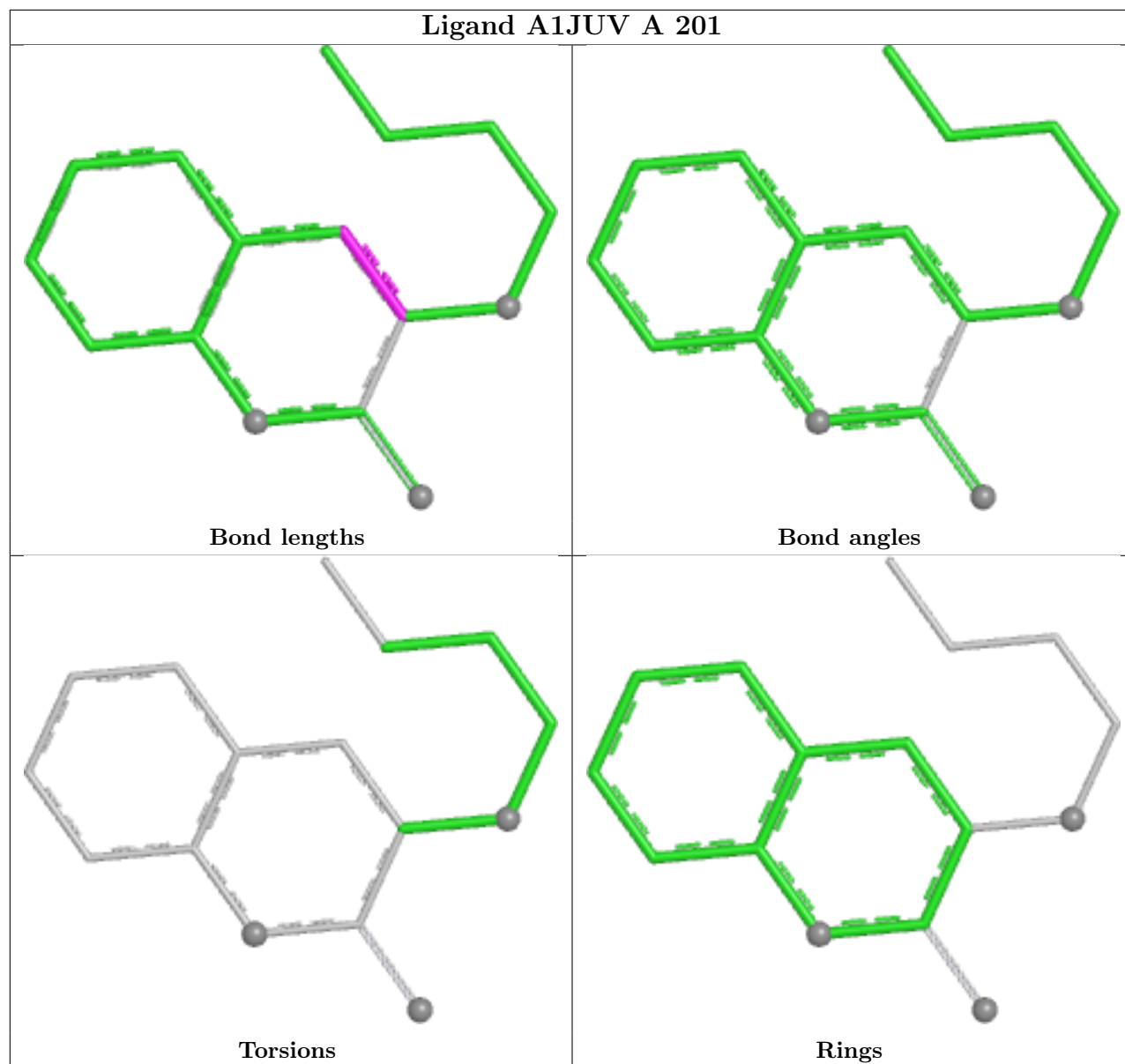
Ligand A1JUW B 202



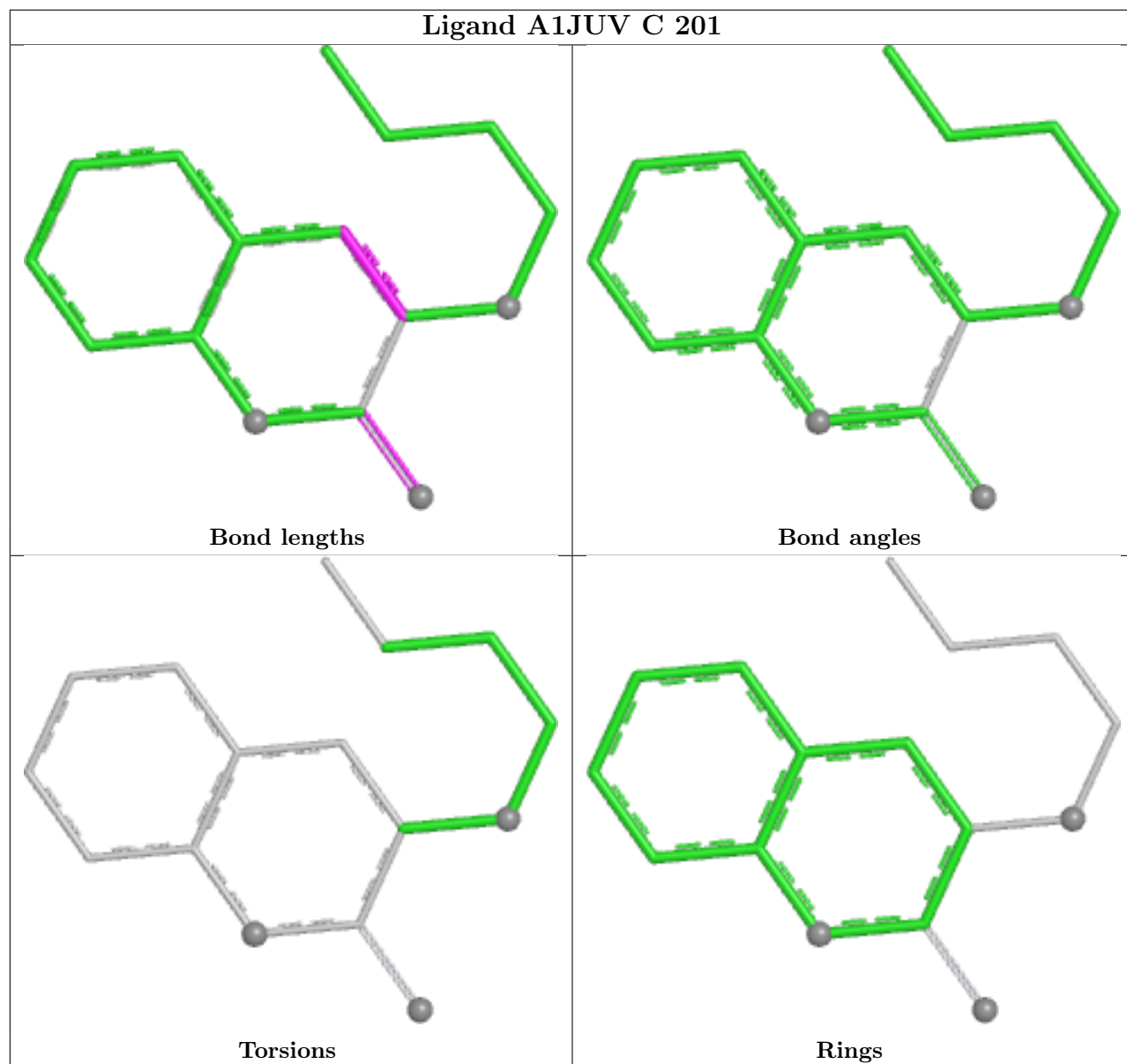
Ligand A1JUV B 201

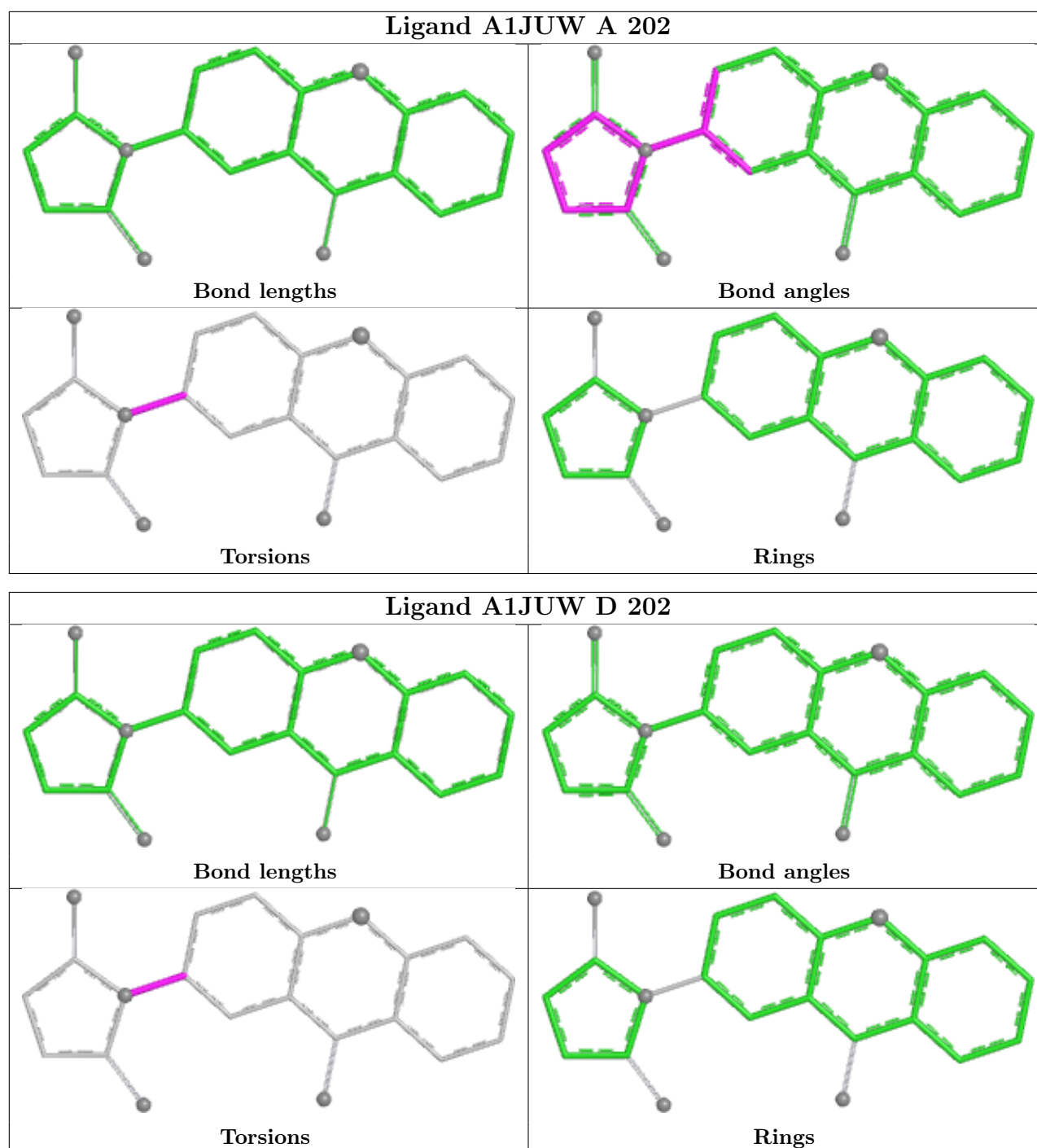


Ligand A1JUV A 201



Ligand A1JUV C 201





5.7 Other polymers [i](#)

There are no such residues in this entry.

5.8 Polymer linkage issues [i](#)

There are no chain breaks in this entry.

6 Fit of model and data [i](#)

6.1 Protein, DNA and RNA chains [i](#)

In the following table, the column labelled ‘#RSRZ> 2’ contains the number (and percentage) of RSRZ outliers, followed by percent RSRZ outliers for the chain as percentile scores relative to all X-ray entries and entries of similar resolution. The OWAB column contains the minimum, median, 95th percentile and maximum values of the occupancy-weighted average B-factor per residue. The column labelled ‘Q< 0.9’ lists the number of (and percentage) of residues with an average occupancy less than 0.9.

Mol	Chain	Analysed	<RSRZ>	#RSRZ>2	OWAB(Å ²)	Q<0.9
1	A	126/126 (100%)	-0.47	1 (0%) 82 85	13, 21, 33, 37	0
1	B	126/126 (100%)	-0.53	0 100 100	6, 20, 36, 42	1 (0%)
1	C	125/126 (99%)	-0.40	0 100 100	13, 21, 37, 42	0
1	D	126/126 (100%)	-0.43	0 100 100	12, 22, 34, 37	1 (0%)
All	All	503/504 (99%)	-0.46	1 (0%) 91 93	6, 21, 35, 42	2 (0%)

All (1) RSRZ outliers are listed below:

Mol	Chain	Res	Type	RSRZ
1	A	60	ALA	2.0

6.2 Non-standard residues in protein, DNA, RNA chains [i](#)

There are no non-standard protein/DNA/RNA residues in this entry.

6.3 Carbohydrates [i](#)

There are no oligosaccharides in this entry.

6.4 Ligands [i](#)

In the following table, the Atoms column lists the number of modelled atoms in the group and the number defined in the chemical component dictionary. The B-factors column lists the minimum, median, 95th percentile and maximum values of B factors of atoms in the group. The column labelled ‘Q< 0.9’ lists the number of atoms with occupancy less than 0.9.

Mol	Type	Chain	Res	Atoms	RSCC	RSR	B-factors(Å ²)	Q<0.9
4	NA	A	204	1/1	0.93	0.27	44,44,44,44	0

Continued on next page...

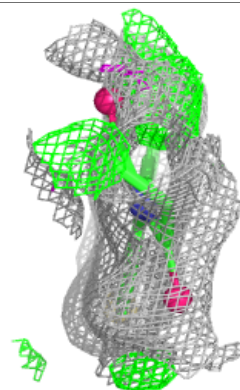
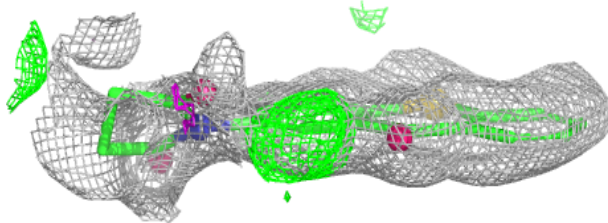
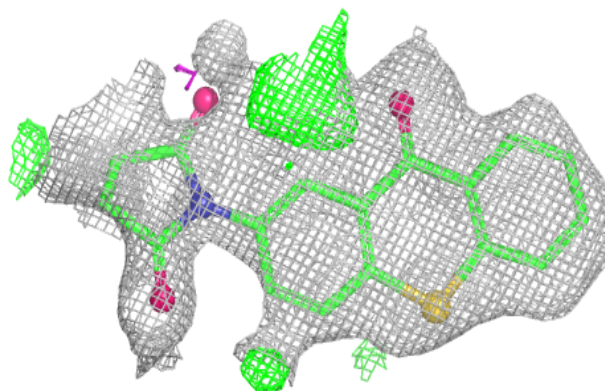
Continued from previous page...

Mol	Type	Chain	Res	Atoms	RSCC	RSR	B-factors(\AA^2)	Q<0.9
3	A1JUW	C	202	22/22	0.97	0.07	19,36,39,50	0
4	NA	B	203	1/1	0.97	0.07	51,51,51,51	0
3	A1JUW	D	202	22/22	0.98	0.07	20,30,37,42	0
3	A1JUW	B	202	22/22	0.98	0.07	14,33,43,54	0
3	A1JUW	A	202	22/22	0.98	0.07	18,31,36,40	0
4	NA	D	203	1/1	0.98	0.05	41,41,41,41	0
2	A1JUV	D	201	16/16	0.99	0.04	17,19,23,25	0
4	NA	A	203	1/1	0.99	0.09	43,43,43,43	0
2	A1JUV	A	201	16/16	0.99	0.04	13,15,22,23	0
2	A1JUV	B	201	16/16	0.99	0.03	12,13,21,21	0
4	NA	C	203	1/1	0.99	0.12	48,48,48,48	0
2	A1JUV	C	201	16/16	0.99	0.04	13,15,21,25	0

The following is a graphical depiction of the model fit to experimental electron density of all instances of the Ligand of Interest. In addition, ligands with molecular weight > 250 and outliers as shown on the geometry validation Tables will also be included. Each fit is shown from different orientation to approximate a three-dimensional view.

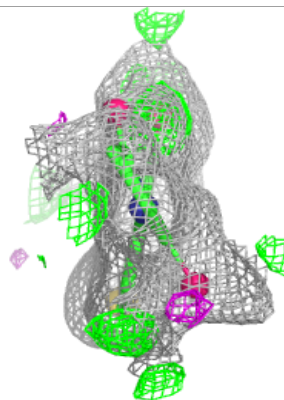
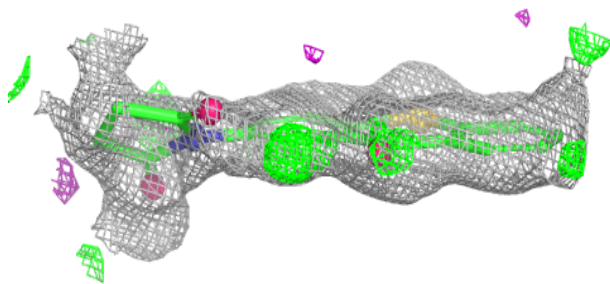
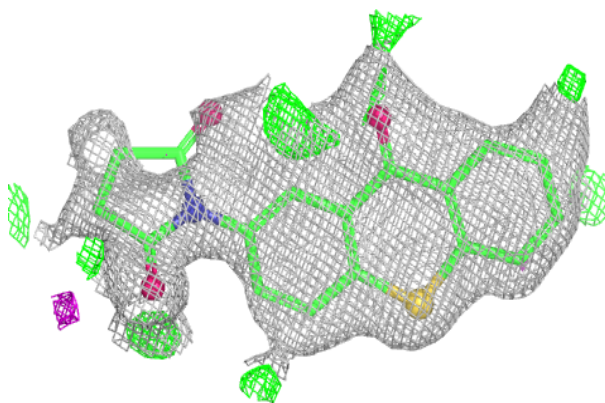
Electron density around A1JUW C 202:

2mF_o-DF_c (at 0.7 rmsd) in gray
mF_o-DF_c (at 3 rmsd) in purple (negative)
and green (positive)

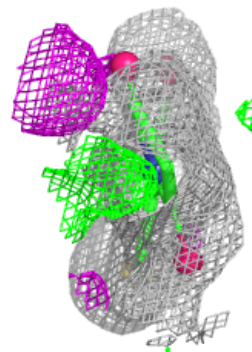
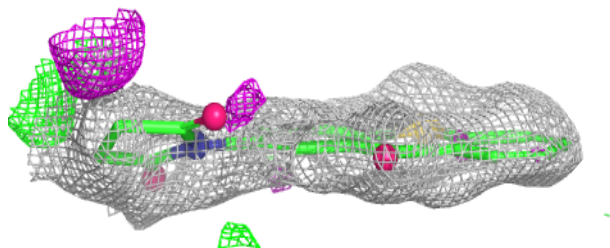
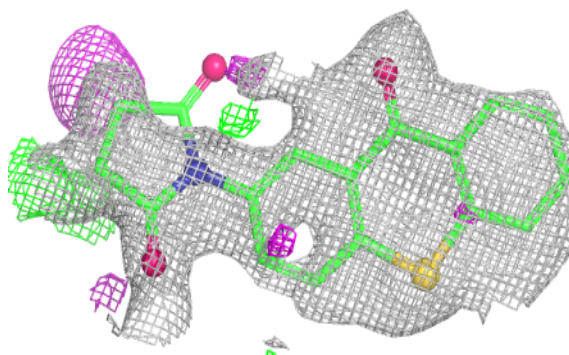


Electron density around A1JUW D 202:

$2mF_o-DF_c$ (at 0.7 rmsd) in gray
 mF_o-DF_c (at 3 rmsd) in purple (negative)
and green (positive)

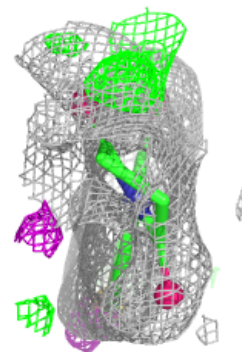
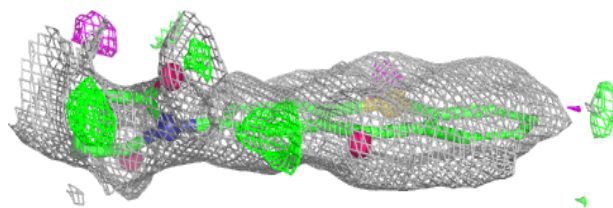
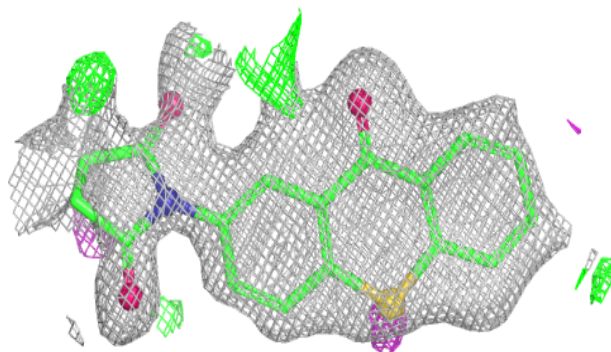
**Electron density around A1JUW B 202:**

$2mF_o-DF_c$ (at 0.7 rmsd) in gray
 mF_o-DF_c (at 3 rmsd) in purple (negative)
and green (positive)

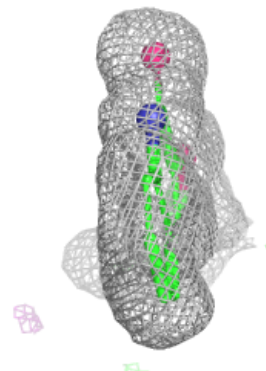
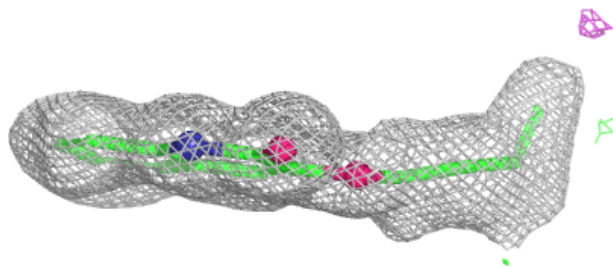
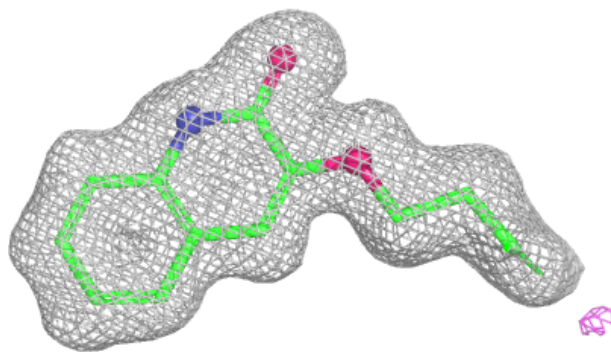


Electron density around A1JUW A 202:

$2mF_o-DF_c$ (at 0.7 rmsd) in gray
 mF_o-DF_c (at 3 rmsd) in purple (negative)
and green (positive)

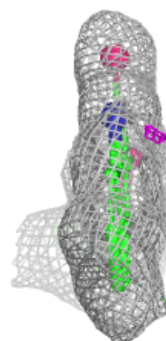
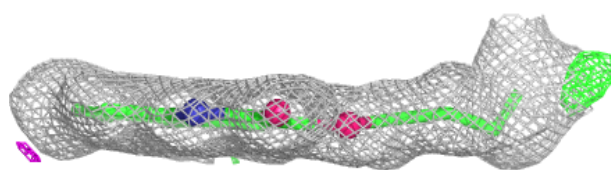
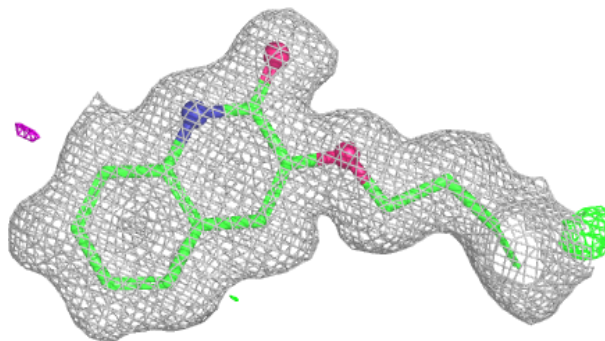
**Electron density around A1JUV D 201:**

$2mF_o-DF_c$ (at 0.7 rmsd) in gray
 mF_o-DF_c (at 3 rmsd) in purple (negative)
and green (positive)

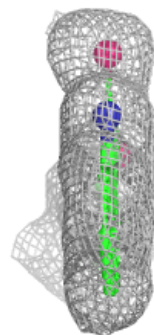
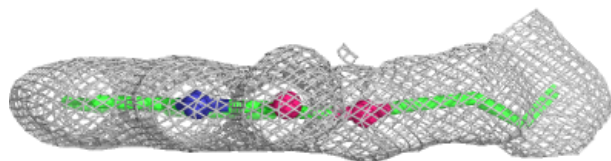
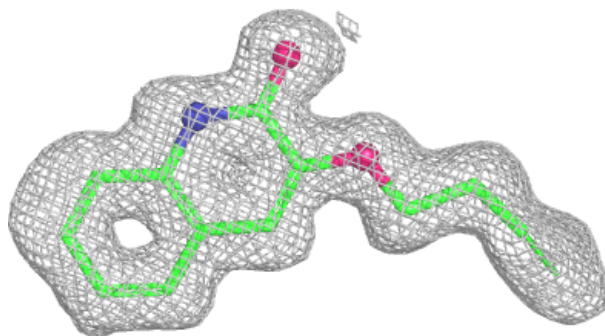


Electron density around A1JUV A 201:

$2mF_o-DF_c$ (at 0.7 rmsd) in gray
 mF_o-DF_c (at 3 rmsd) in purple (negative)
and green (positive)

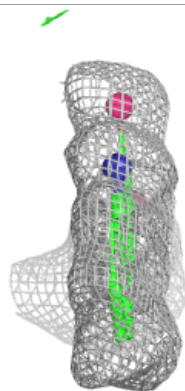
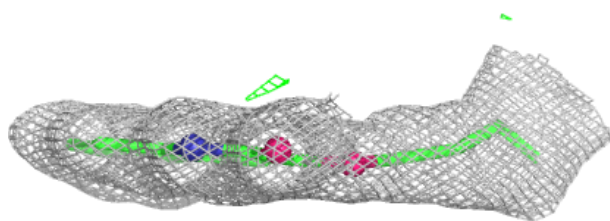
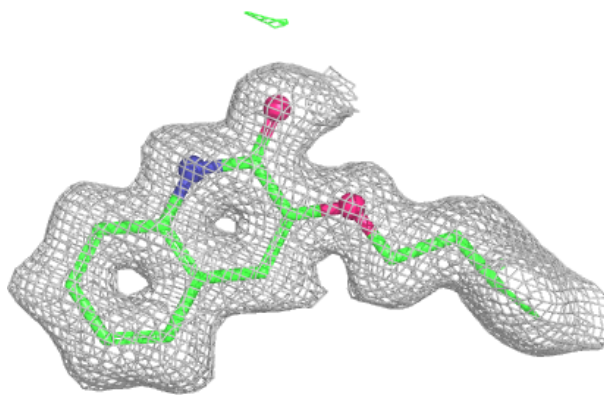
**Electron density around A1JUV B 201:**

$2mF_o-DF_c$ (at 0.7 rmsd) in gray
 mF_o-DF_c (at 3 rmsd) in purple (negative)
and green (positive)



Electron density around A1JUV C 201:

$2mF_o - DF_c$ (at 0.7 rmsd) in gray
 $mF_o - DF_c$ (at 3 rmsd) in purple (negative)
and green (positive)



6.5 Other polymers [i](#)

There are no such residues in this entry.