



Full wwPDB EM Validation Report ⓘ

Apr 6, 2026 – 03:37 AM UTC

PDB ID : 9T5V / pdb_00009t5v
EMDB ID : EMD-55596
Title : Cryo-EM structure of alphaM/beta2:C3d-anti-CR3-Nb headpiece complex
(HPO1 3D class reconstruction)
Authors : Andersen, G.R.; Fruergaard, M.U.
Deposited on : 2025-11-06
Resolution : 3.06 Å(reported)

This is a Full wwPDB EM Validation Report for a publicly released PDB entry.

We welcome your comments at validation@mail.wwpdb.org

A user guide is available at

<https://www.wwpdb.org/validation/2017/EMValidationReportHelp>
with specific help available everywhere you see the ⓘ symbol.

The types of validation reports are described at

<http://www.wwpdb.org/validation/2017/FAQs#types>.

The following versions of software and data (see [references ⓘ](#)) were used in the production of this report:

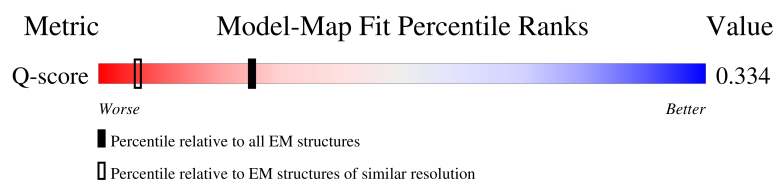
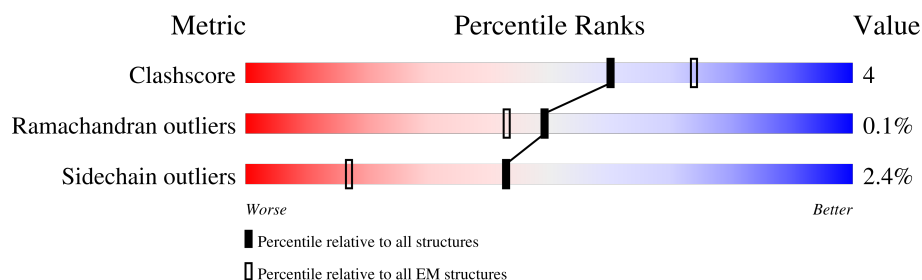
EMDB validation analysis : 0.0.1.dev132
Mogul : 2022.3.0, CSD as543be (2022)
MolProbity : 4-5-2 with Phenix2.0
Buster-report : wwPDB partial adaption of 1.1.7 (2018)
Percentile statistics : 20250101.v01 (using entries in the PDB archive January 1st 2025)
EM percentile statistics : 202505.v01 (Using data in the EMDB archive up until May 2025)
MapQ : 1.9.13
Ideal geometry (proteins) : Engh & Huber (2001)
Ideal geometry (DNA, RNA) : Parkinson et al. (1996)
Validation Pipeline (wwPDB-VP) : 2.49

1 Overall quality at a glance

The following experimental techniques were used to determine the structure:
ELECTRON MICROSCOPY

The reported resolution of this entry is 3.06 Å.

Percentile scores (ranging between 0-100) for global validation metrics of the entry are shown in the following graphic. The table shows the number of entries on which the scores are based.



Metric	Whole archive (#Entries)	EM structures (#Entries)	Similar EM resolution (#Entries, resolution range(Å))
Clashscore	229148	23984	-
Ramachandran outliers	224038	23583	-
Sidechain outliers	223484	23102	-
Q-score	-	25397	13976 (2.56 - 3.56)

The table below summarises the geometric issues observed across the polymeric chains and their fit to the map. The red, orange, yellow and green segments of the bar indicate the fraction of residues that contain outliers for ≥ 3 , 2, 1 and 0 types of geometric quality criteria respectively. A grey segment represents the fraction of residues that are not modelled. The numeric value for each fraction is indicated below the corresponding segment, with a dot representing fractions $\leq 5\%$. The upper red bar (where present) indicates the fraction of residues that have poor fit to the EM map (all-atom inclusion $< 40\%$). The numeric value is given above the bar.

Mol	Chain	Length	Quality of chain
1	A	763	
2	B	469	
3	C	448	
4	D	3	

Continued on next page...

Continued from previous page...

Mol	Chain	Length	Quality of chain
5	E	5	<div><div>40%</div><div>100%</div></div>
5	F	5	<div><div>100%</div></div>
6	G	2	<div><div>100%</div></div>
6	H	2	<div><div>100%</div></div>

2 Entry composition

There are 10 unique types of molecules in this entry. The entry contains 12937 atoms, of which 0 are hydrogens and 0 are deuteriums.

In the tables below, the AltConf column contains the number of residues with at least one atom in alternate conformation and the Trace column contains the number of residues modelled with at most 2 atoms.

- Molecule 1 is a protein called Isoform 2 of Integrin alpha-M.

Mol	Chain	Residues	Atoms					AltConf	Trace
			Total	C	N	O	S		
1	A	751	5803	3636	1036	1106	25	0	0

There are 8 discrepancies between the modelled and reference sequences:

Chain	Residue	Modelled	Actual	Comment	Reference
A	755	THR	CYS	engineered mutation	UNP P11215
A	757	GLY	ASN	engineered mutation	UNP P11215
A	758	GLU	-	expression tag	UNP P11215
A	759	ASN	-	expression tag	UNP P11215
A	760	LEU	-	expression tag	UNP P11215
A	761	TYR	-	expression tag	UNP P11215
A	762	PHE	-	expression tag	UNP P11215
A	763	GLN	-	expression tag	UNP P11215

- Molecule 2 is a protein called Integrin beta-2.

Mol	Chain	Residues	Atoms					AltConf	Trace
			Total	C	N	O	S		
2	B	459	3573	2225	634	685	29	0	0

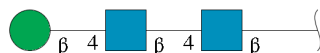
There are 9 discrepancies between the modelled and reference sequences:

Chain	Residue	Modelled	Actual	Comment	Reference
B	461	PRO	CYS	engineered mutation	UNP P05107
B	462	ALA	GLN	engineered mutation	UNP P05107
B	463	ALA	THR	engineered mutation	UNP P05107
B	464	GLU	-	expression tag	UNP P05107
B	465	ASN	-	expression tag	UNP P05107
B	466	LEU	-	expression tag	UNP P05107
B	467	TYR	-	expression tag	UNP P05107
B	468	PHE	-	expression tag	UNP P05107
B	469	GLN	-	expression tag	UNP P05107

- Molecule 3 is a protein called C3d-anti-CR3-Nb fusion ligand.

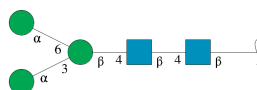
Mol	Chain	Residues	Atoms					AltConf	Trace
3	C	422	Total	C	N	O	S	0	0
			3286	2090	554	627	15		

- Molecule 4 is an oligosaccharide called beta-D-mannopyranose-(1-4)-2-acetamido-2-deoxy-beta-D-glucopyranose-(1-4)-2-acetamido-2-deoxy-beta-D-glucopyranose.



Mol	Chain	Residues	Atoms				AltConf	Trace
4	D	3	Total	C	N	O	0	0
			39	22	2	15		

- Molecule 5 is an oligosaccharide called alpha-D-mannopyranose-(1-3)-[alpha-D-mannopyranose-(1-6)]beta-D-mannopyranose-(1-4)-2-acetamido-2-deoxy-beta-D-glucopyranose-(1-4)-2-acetamido-2-deoxy-beta-D-glucopyranose.



Mol	Chain	Residues	Atoms				AltConf	Trace
5	E	5	Total	C	N	O	0	0
			61	34	2	25		
5	F	5	Total	C	N	O	0	0
			61	34	2	25		

- Molecule 6 is an oligosaccharide called 2-acetamido-2-deoxy-beta-D-glucopyranose-(1-4)-2-acetamido-2-deoxy-beta-D-glucopyranose.



Mol	Chain	Residues	Atoms				AltConf	Trace
6	G	2	Total	C	N	O	0	0
			28	16	2	10		
6	H	2	Total	C	N	O	0	0
			28	16	2	10		

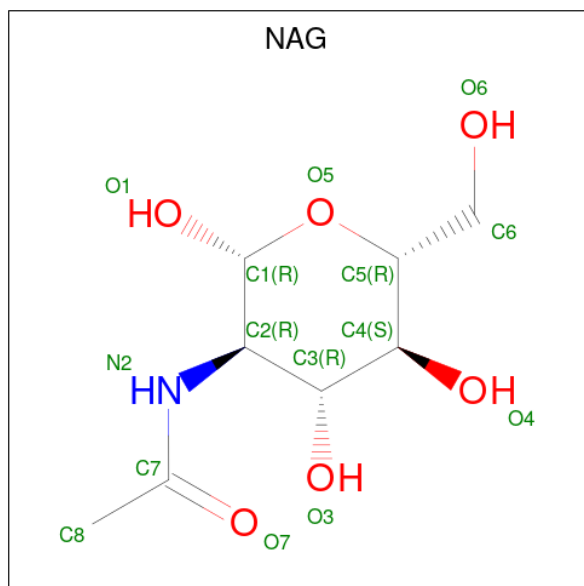
- Molecule 7 is CALCIUM ION (CCD ID: CA) (formula: Ca).

Mol	Chain	Residues	Atoms		AltConf
7	A	3	Total	Ca	0
			3	3	
7	B	2	Total	Ca	0
			2	2	

- Molecule 8 is MANGANESE (II) ION (CCD ID: MN) (formula: Mn).

Mol	Chain	Residues	Atoms		AltConf
8	A	1	Total	Mn	0
			1	1	
8	B	1	Total	Mn	0
			1	1	

- Molecule 9 is 2-acetamido-2-deoxy-beta-D-glucopyranose (CCD ID: NAG) (formula: C₈H₁₅NO₆) (labeled as "Ligand of Interest" by depositor).



Mol	Chain	Residues	Atoms				AltConf
9	A	1	Total	C	N	O	0
			14	8	1	5	
9	A	1	Total	C	N	O	0
			14	8	1	5	
9	B	1	Total	C	N	O	0
			14	8	1	5	

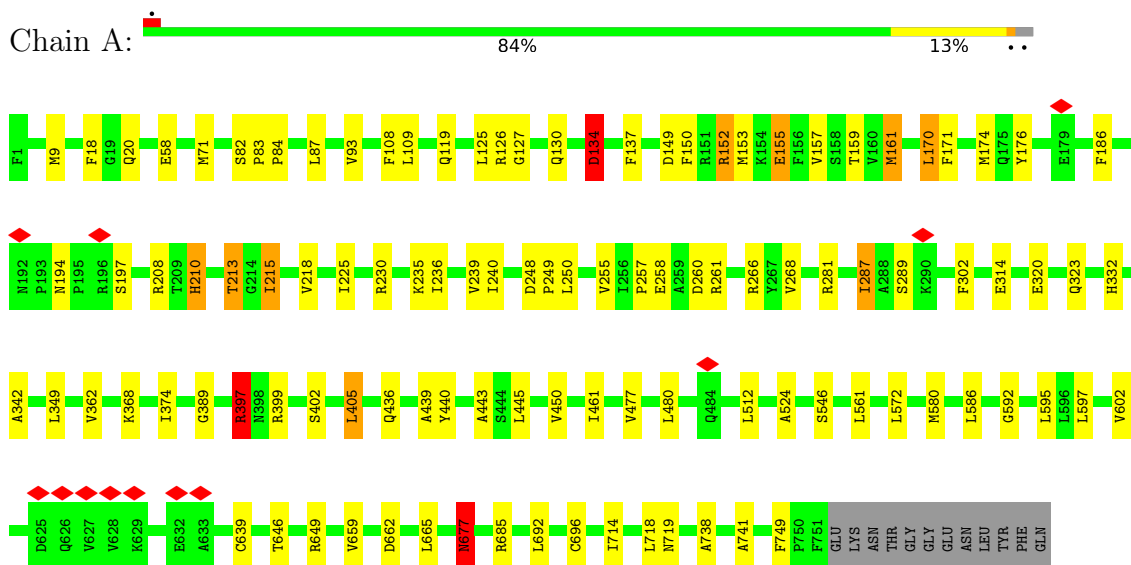
- Molecule 10 is water.

Mol	Chain	Residues	Atoms		AltConf
10	A	5	Total 5	O 5	0
10	B	4	Total 4	O 4	0

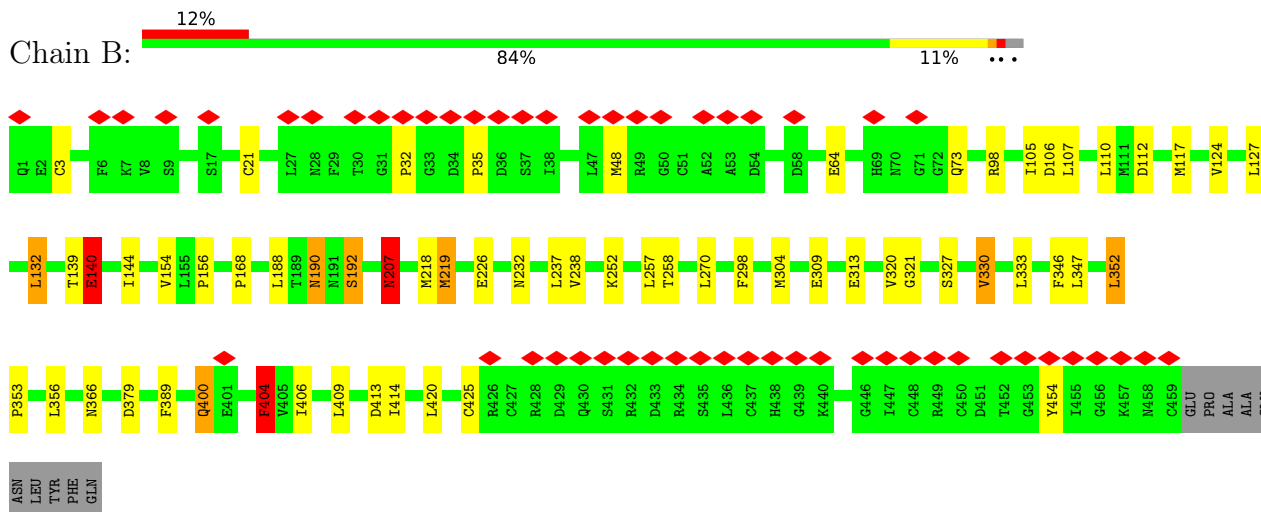
3 Residue-property plots

These plots are drawn for all protein, RNA, DNA and oligosaccharide chains in the entry. The first graphic for a chain summarises the proportions of the various outlier classes displayed in the second graphic. The second graphic shows the sequence view annotated by issues in geometry and atom inclusion in map density. Residues are color-coded according to the number of geometric quality criteria for which they contain at least one outlier: green = 0, yellow = 1, orange = 2 and red = 3 or more. A red diamond above a residue indicates a poor fit to the EM map for this residue (all-atom inclusion < 40%). Stretches of 2 or more consecutive residues without any outlier are shown as a green connector. Residues present in the sample, but not in the model, are shown in grey.


- Molecule 1: Isoform 2 of Integrin alpha-M

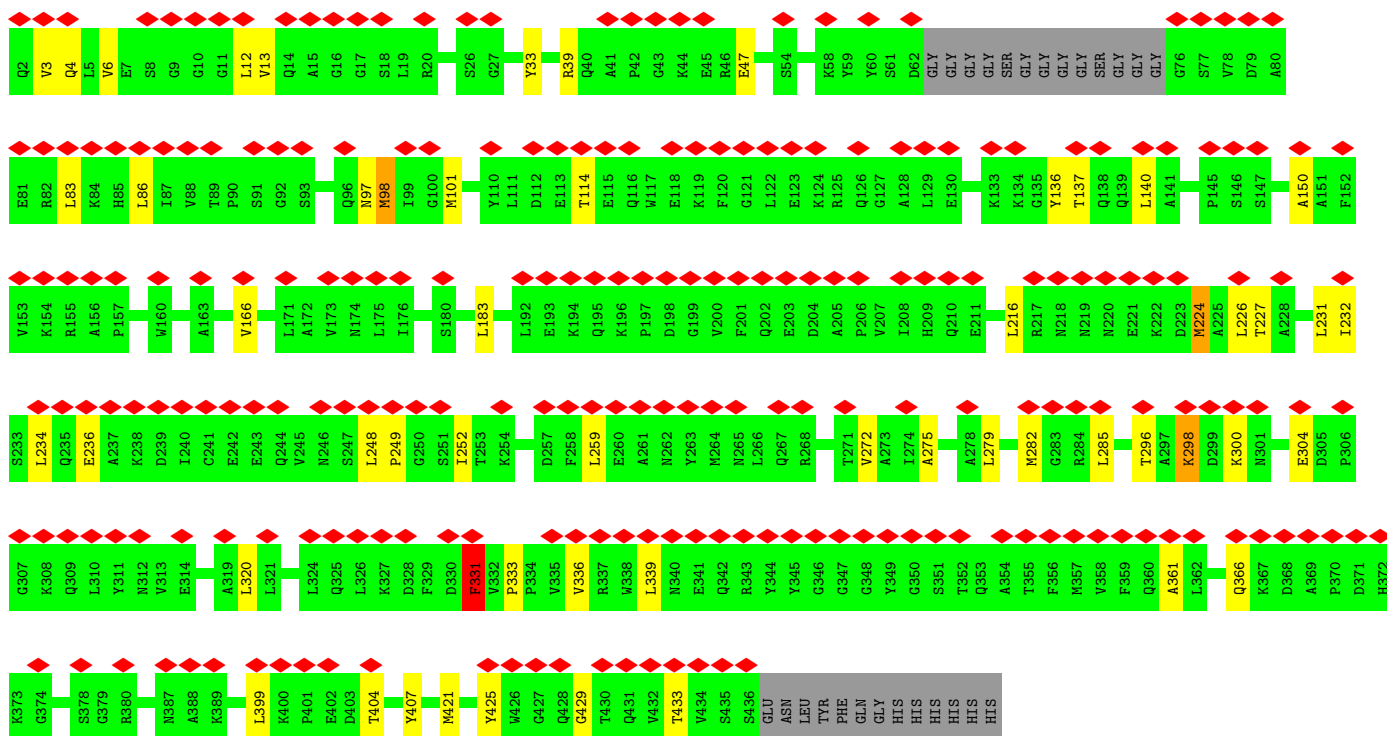


- Molecule 2: Integrin beta-2



- Molecule 3: C3d-anti-CR3-Nb fusion ligand

Chain C: 



- Molecule 4: beta-D-mannopyranose-(1-4)-2-acetamido-2-deoxy-beta-D-glucopyranose-(1-4)-2-acetamido-2-deoxy-beta-D-glucopyranose

Chain D: 

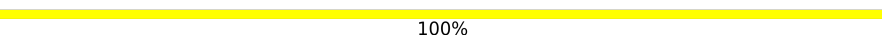
MAG1
MAG2
BMA3

- Molecule 5: alpha-D-mannopyranose-(1-3)-[alpha-D-mannopyranose-(1-6)]beta-D-mannopyranose-(1-4)-2-acetamido-2-deoxy-beta-D-glucopyranose-(1-4)-2-acetamido-2-deoxy-beta-D-glucopyranose

Chain E: 

MAG1
MAG2
BMA3
MAN4
MAN5

- Molecule 5: alpha-D-mannopyranose-(1-3)-[alpha-D-mannopyranose-(1-6)]beta-D-mannopyranose-(1-4)-2-acetamido-2-deoxy-beta-D-glucopyranose-(1-4)-2-acetamido-2-deoxy-beta-D-glucopyranose

Chain F: 

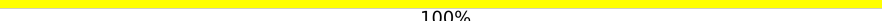
MAG1
MAG2
BMA3
MAN4
MAN5

- Molecule 6: 2-acetamido-2-deoxy-beta-D-glucopyranose-(1-4)-2-acetamido-2-deoxy-beta-D-glucopyranose

Chain G:  100%

MAG1
MAG2

- Molecule 6: 2-acetamido-2-deoxy-beta-D-glucopyranose-(1-4)-2-acetamido-2-deoxy-beta-D-glucopyranose

Chain H:  100%

MAG1
MAG2

4 Experimental information

Property	Value	Source
EM reconstruction method	SINGLE PARTICLE	Depositor
Imposed symmetry	POINT, Not provided	
Number of particles used	36689	Depositor
Resolution determination method	FSC 0.143 CUT-OFF	Depositor
CTF correction method	PHASE FLIPPING AND AMPLITUDE CORRECTION	Depositor
Microscope	TFS KRIOS	Depositor
Voltage (kV)	300	Depositor
Electron dose ($e^-/\text{\AA}^2$)	60.1	Depositor
Minimum defocus (nm)	800	Depositor
Maximum defocus (nm)	2000	Depositor
Magnification	Not provided	
Image detector	GATAN K3 (6k x 4k)	Depositor
Maximum map value	1.656	Depositor
Minimum map value	-0.601	Depositor
Average map value	0.001	Depositor
Map value standard deviation	0.029	Depositor
Recommended contour level	0.18	Depositor
Map size (\AA)	331.264, 331.264, 331.264	wwPDB
Map dimensions	256, 256, 256	wwPDB
Map angles ($^\circ$)	90.0, 90.0, 90.0	wwPDB
Pixel spacing (\AA)	1.294, 1.294, 1.294	Depositor

5 Model quality [i](#)

5.1 Standard geometry [i](#)

Bond lengths and bond angles in the following residue types are not validated in this section: CA, MN, BMA, NAG, MAN

The Z score for a bond length (or angle) is the number of standard deviations the observed value is removed from the expected value. A bond length (or angle) with $|Z| > 5$ is considered an outlier worth inspection. RMSZ is the root-mean-square of all Z scores of the bond lengths (or angles).

Mol	Chain	Bond lengths		Bond angles	
		RMSZ	# $ Z > 5$	RMSZ	# $ Z > 5$
1	A	0.46	5/5914 (0.1%)	0.72	12/8007 (0.1%)
2	B	0.50	4/3642 (0.1%)	0.90	18/4927 (0.4%)
3	C	0.51	3/3357 (0.1%)	0.82	4/4545 (0.1%)
All	All	0.49	12/12913 (0.1%)	0.80	34/17479 (0.2%)

Chiral center outliers are detected by calculating the chiral volume of a chiral center and verifying if the center is modelled as a planar moiety or with the opposite hand. A planarity outlier is detected by checking planarity of atoms in a peptide group, atoms in a mainchain group or atoms of a sidechain that are expected to be planar.

Mol	Chain	#Chirality outliers	#Planarity outliers
1	A	0	6
2	B	0	6
3	C	0	5
All	All	0	17

All (12) bond length outliers are listed below:

Mol	Chain	Res	Type	Atoms	Z	Observed(Å)	Ideal(Å)
1	A	170	LEU	CG-CD2	-10.53	1.17	1.52
3	C	136	TYR	CE1-CZ	7.51	1.56	1.38
3	C	136	TYR	CE2-CZ	-7.45	1.20	1.38
3	C	331	PHE	CE1-CZ	-6.01	1.20	1.38
1	A	677	ASN	CG-OD1	-5.66	1.12	1.23
1	A	134	ASP	CG-OD1	-5.63	1.14	1.25
2	B	413	ASP	C-N	-5.63	1.26	1.33
1	A	397	ARG	CA-C	-5.36	1.45	1.52
2	B	140	GLU	CD-OE1	-5.33	1.15	1.25
1	A	213	THR	CB-CG2	-5.17	1.35	1.52
2	B	207	ASN	CG-ND2	-5.15	1.22	1.33
2	B	404	PHE	CD2-CE2	-5.07	1.23	1.38

All (34) bond angle outliers are listed below:

Mol	Chain	Res	Type	Atoms	Z	Observed(°)	Ideal(°)
2	B	414	ILE	CA-CB-CG1	21.90	147.63	110.40
1	A	677	ASN	OD1-CG-ND2	-9.57	113.03	122.60
1	A	155	GLU	OE1-CD-OE2	-9.18	100.88	122.90
1	A	677	ASN	CB-CG-ND2	-8.54	103.60	116.40
1	A	152	ARG	CA-C-N	-6.98	107.97	121.58
1	A	152	ARG	C-N-CA	-6.98	107.97	121.58
1	A	161	MET	N-CA-CB	6.86	120.91	110.28
1	A	161	MET	CG-SD-CE	-6.66	86.26	100.90
2	B	414	ILE	CG1-CB-CG2	-6.49	91.24	110.70
1	A	323	GLN	CA-CB-CG	6.48	127.06	114.10
3	C	136	TYR	CE1-CZ-OH	6.40	139.09	119.90
2	B	400	GLN	CB-CG-CD	6.38	123.45	112.60
3	C	136	TYR	OH-CZ-CE2	-6.04	101.77	119.90
2	B	226	GLU	CA-CB-CG	6.04	126.17	114.10
2	B	219	MET	CB-CG-SD	5.74	129.91	112.70
2	B	140	GLU	CG-CD-OE2	5.66	131.42	118.40
2	B	304	MET	CB-CG-SD	5.65	129.65	112.70
3	C	98	MET	CB-CG-SD	5.53	129.30	112.70
2	B	226	GLU	OE1-CD-OE2	-5.42	109.91	122.90
1	A	677	ASN	CB-CG-OD1	5.40	131.61	120.80
1	A	236	ILE	CG1-CB-CG2	-5.33	94.72	110.70
2	B	379	ASP	CA-C-N	-5.28	115.19	122.26
2	B	379	ASP	C-N-CA	-5.28	115.19	122.26
2	B	352	LEU	CD1-CG-CD2	-5.26	99.23	110.80
2	B	190	ASN	CB-CG-OD1	-5.21	110.37	120.80
2	B	366	ASN	CA-C-N	5.18	131.57	121.41
2	B	366	ASN	C-N-CA	5.18	131.57	121.41
3	C	298	LYS	CB-CG-CD	5.18	123.22	111.30
2	B	313	GLU	CA-C-N	-5.13	117.94	122.97
2	B	313	GLU	C-N-CA	-5.13	117.94	122.97
1	A	719	ASN	CB-CG-ND2	5.05	123.98	116.40
2	B	32	PRO	CA-C-N	-5.04	112.98	121.85
2	B	32	PRO	C-N-CA	-5.04	112.98	121.85
1	A	215	ILE	CA-CB-CG1	5.03	118.94	110.40

There are no chirality outliers.

All (17) planarity outliers are listed below:

Mol	Chain	Res	Type	Group
1	A	155	GLU	Sidechain
1	A	176	TYR	Peptide

Continued on next page...

Continued from previous page...

Mol	Chain	Res	Type	Group
1	A	397	ARG	Sidechain
1	A	399	ARG	Sidechain
1	A	677	ASN	Sidechain
1	A	82	SER	Peptide
2	B	168	PRO	Mainchain
2	B	190	ASN	Sidechain
2	B	192	SER	Mainchain
2	B	232	ASN	Sidechain
2	B	404	PHE	Sidechain
2	B	425	CYS	Mainchain
3	C	150	ALA	Mainchain
3	C	300	LYS	Mainchain
3	C	33	TYR	Sidechain
3	C	331	PHE	Mainchain,Sidechain

5.2 Too-close contacts

In the following table, the Non-H and H(model) columns list the number of non-hydrogen atoms and hydrogen atoms in the chain respectively. The H(added) column lists the number of hydrogen atoms added and optimized by MolProbity. The Clashes column lists the number of clashes within the asymmetric unit, whereas Symm-Clashes lists symmetry-related clashes.

Mol	Chain	Non-H	H(model)	H(added)	Clashes	Symm-Clashes
1	A	5803	0	5724	57	0
2	B	3573	0	3487	30	0
3	C	3286	0	3214	33	0
4	D	39	0	34	0	0
5	E	61	0	51	0	0
5	F	61	0	52	0	0
6	G	28	0	25	0	0
6	H	28	0	25	0	0
7	A	3	0	0	0	0
7	B	2	0	0	0	0
8	A	1	0	0	0	0
8	B	1	0	0	0	0
9	A	28	0	26	1	0
9	B	14	0	13	0	0
10	A	5	0	0	0	0
10	B	4	0	0	0	0
All	All	12937	0	12651	115	0

The all-atom clashscore is defined as the number of clashes found per 1000 atoms (including

hydrogen atoms). The all-atom clashscore for this structure is 4.

All (115) close contacts within the same asymmetric unit are listed below, sorted by their clash magnitude.

Atom-1	Atom-2	Interatomic distance (Å)	Clash overlap (Å)
1:A:662:ASP:HB3	1:A:685:ARG:HG2	1.49	0.94
3:C:231:LEU:HD11	3:C:252:ILE:HA	1.70	0.73
3:C:98:MET:HE2	3:C:101:MET:HG3	1.78	0.65
1:A:20:GLN:HE21	2:B:257:LEU:HD22	1.63	0.63
3:C:166:VAL:HG23	3:C:183:LEU:HG	1.85	0.59
3:C:4:GLN:HE21	3:C:6:VAL:HG23	1.69	0.58
1:A:130:GLN:HA	1:A:314:GLU:HA	1.86	0.57
1:A:213:THR:HG22	1:A:250:LEU:HD12	1.85	0.57
2:B:48:MET:HE3	2:B:48:MET:H	1.70	0.56
1:A:342:ALA:HB3	1:A:349:LEU:HB3	1.88	0.56
1:A:572:LEU:HD22	1:A:586:LEU:HD11	1.89	0.55
1:A:215:ILE:HA	1:A:218:VAL:HG12	1.89	0.54
1:A:161:MET:HG3	1:A:171:PHE:CD2	2.42	0.54
1:A:170:LEU:HG	1:A:186:PHE:CD1	2.43	0.54
1:A:210:HIS:NE2	1:A:249:PRO:HD2	2.24	0.53
2:B:252:LYS:HG3	2:B:257:LEU:HD21	1.89	0.53
1:A:397:ARG:HH21	1:A:480:LEU:HB3	1.73	0.53
2:B:400:GLN:H	2:B:400:GLN:CD	2.16	0.53
1:A:561:LEU:HD23	1:A:595:LEU:HD22	1.89	0.53
1:A:134:ASP:HB3	1:A:170:LEU:HD21	1.90	0.53
1:A:157:VAL:HG22	1:A:161:MET:HE1	1.91	0.53
2:B:73:GLN:HE22	2:B:98:ARG:HB3	1.72	0.52
2:B:321:GLY:HA3	2:B:330:VAL:HG12	1.91	0.52
1:A:119:GLN:OE1	1:A:368:LYS:HG2	2.10	0.52
1:A:586:LEU:HD23	1:A:597:LEU:HD12	1.92	0.52
1:A:362:VAL:HG23	1:A:374:ILE:HB	1.92	0.51
2:B:298:PHE:HB2	2:B:320:VAL:HG22	1.91	0.51
3:C:333:PRO:HA	3:C:336:VAL:HG22	1.93	0.51
1:A:258:GLU:HA	1:A:261:ARG:HD3	1.91	0.51
2:B:132:LEU:HD11	2:B:192:SER:HB2	1.93	0.50
3:C:259:LEU:HD12	3:C:279:LEU:HB2	1.94	0.50
3:C:282:MET:HE3	3:C:282:MET:H	1.77	0.49
2:B:207:ASN:C	2:B:207:ASN:HD22	2.19	0.49
2:B:106:ASP:HB2	2:B:188:LEU:HD13	1.93	0.49
1:A:440:TYR:HD2	1:A:443:ALA:HB2	1.77	0.49
1:A:450:VAL:HG21	1:A:546:SER:HA	1.94	0.49
1:A:445:LEU:HD12	1:A:461:ILE:HG12	1.95	0.49
2:B:218:MET:HE3	2:B:237:LEU:HD22	1.95	0.49

Continued on next page...

Continued from previous page...

Atom-1	Atom-2	Interatomic distance (Å)	Clash overlap (Å)
1:A:149:ASP:HA	1:A:152:ARG:HB2	1.94	0.48
1:A:266:ARG:HE	1:A:289:SER:HB3	1.78	0.48
1:A:320:GLU:HG2	2:B:207:ASN:HD21	1.78	0.48
3:C:216:LEU:HD22	3:C:226:LEU:HD23	1.96	0.47
1:A:714:ILE:HD12	1:A:749:PHE:HD2	1.80	0.47
2:B:132:LEU:HD23	2:B:144:ILE:HG21	1.97	0.47
2:B:353:PRO:HG2	2:B:356:LEU:HD23	1.96	0.47
2:B:110:LEU:HD12	2:B:237:LEU:HD21	1.96	0.47
1:A:83:PRO:HA	1:A:84:PRO:HD3	1.82	0.46
1:A:320:GLU:HG2	2:B:207:ASN:ND2	2.31	0.46
3:C:320:LEU:HD11	3:C:336:VAL:HG12	1.96	0.46
3:C:39:ARG:HG3	3:C:47:GLU:HB2	1.98	0.46
3:C:97:ASN:O	3:C:101:MET:HG2	2.16	0.46
3:C:298:LYS:HG2	3:C:304:GLU:H	1.81	0.46
3:C:13:VAL:HG11	3:C:399:LEU:HD22	1.97	0.46
3:C:232:ILE:O	3:C:236:GLU:HG3	2.15	0.46
3:C:272:VAL:HG11	3:C:296:THR:HG21	1.98	0.46
1:A:580:MET:HE2	1:A:649:ARG:HH22	1.80	0.46
3:C:407:TYR:O	3:C:429:GLY:HA2	2.16	0.46
1:A:18:PHE:HB3	1:A:592:GLY:HA2	1.98	0.46
1:A:150:PHE:HA	1:A:153:MET:SD	2.57	0.45
1:A:159:THR:HG21	1:A:302:PHE:HZ	1.80	0.45
1:A:662:ASP:CB	1:A:685:ARG:HG2	2.33	0.45
2:B:117:MET:HE1	2:B:124:VAL:HG11	1.99	0.45
3:C:3:VAL:HG11	3:C:425:TYR:HD2	1.82	0.45
1:A:126:ARG:HB3	1:A:127:GLY:H	1.60	0.45
1:A:153:MET:HG2	1:A:240:ILE:HG21	1.99	0.45
1:A:512:LEU:HD21	1:A:586:LEU:HD13	1.97	0.45
1:A:210:HIS:NE2	1:A:248:ASP:HA	2.32	0.44
2:B:154:VAL:HG12	2:B:156:PRO:HD2	1.98	0.44
1:A:639:CYS:HB3	1:A:696:CYS:HB2	1.89	0.44
3:C:259:LEU:HD21	3:C:275:ALA:HB1	1.99	0.44
2:B:346:PHE:HB2	2:B:409:LEU:HD13	1.99	0.44
3:C:114:THR:HG22	3:C:366:GLN:HG2	2.00	0.44
1:A:677:ASN:HB3	9:A:1205:NAG:O5	2.18	0.43
3:C:404:THR:HG23	3:C:433:THR:HA	1.99	0.43
1:A:134:ASP:OD1	1:A:235:LYS:HA	2.18	0.43
1:A:71:MET:HG3	1:A:93:VAL:HG22	2.00	0.43
1:A:170:LEU:HD22	1:A:230:ARG:CZ	2.48	0.43
2:B:127:LEU:HD13	2:B:327:SER:HB2	2.01	0.43
1:A:239:VAL:HG13	1:A:268:VAL:HG23	2.00	0.43

Continued on next page...

Continued from previous page...

Atom-1	Atom-2	Interatomic distance (Å)	Clash overlap (Å)
3:C:320:LEU:HD22	3:C:361:ALA:HB1	2.00	0.43
1:A:215:ILE:HD11	1:A:255:VAL:HG13	2.01	0.43
2:B:112:ASP:HB3	2:B:117:MET:HG3	2.01	0.43
1:A:208:ARG:HH11	3:C:331:PHE:HZ	1.66	0.42
3:C:279:LEU:HA	3:C:282:MET:HE1	1.99	0.42
3:C:231:LEU:HD12	3:C:231:LEU:HA	1.80	0.42
1:A:738:ALA:HB3	1:A:741:ALA:HB2	2.01	0.42
3:C:3:VAL:HG21	3:C:425:TYR:HE2	1.84	0.42
1:A:170:LEU:HD22	1:A:230:ARG:NH2	2.35	0.42
3:C:224:MET:HA	3:C:227:THR:HB	2.00	0.42
1:A:225:ILE:H	1:A:225:ILE:HG13	1.72	0.41
2:B:117:MET:HE3	2:B:117:MET:HB3	1.93	0.41
2:B:333:LEU:HD23	2:B:333:LEU:HA	1.89	0.41
1:A:87:LEU:HA	1:A:108:PHE:O	2.21	0.41
1:A:87:LEU:HB2	1:A:109:LEU:HD12	2.03	0.41
2:B:207:ASN:C	2:B:207:ASN:ND2	2.75	0.41
1:A:194:ASN:HD21	1:A:197:SER:HB2	1.84	0.41
1:A:436:GLN:HB3	1:A:439:ALA:HB2	2.03	0.41
1:A:602:VAL:HG22	1:A:646:THR:HG23	2.03	0.41
2:B:347:LEU:HB2	2:B:389:PHE:CE2	2.56	0.41
3:C:137:THR:HA	3:C:140:LEU:HD12	2.03	0.41
3:C:320:LEU:HD13	3:C:339:LEU:HD12	2.02	0.41
3:C:407:TYR:O	3:C:429:GLY:CA	2.69	0.41
2:B:105:ILE:HG22	2:B:139:THR:HG21	2.02	0.41
2:B:219:MET:HE2	2:B:219:MET:HA	2.02	0.41
3:C:12:LEU:HD22	3:C:433:THR:HB	2.03	0.41
1:A:389:GLY:HA2	1:A:405:LEU:HD12	2.03	0.41
1:A:257:PRO:HA	1:A:260:ASP:HB2	2.02	0.40
1:A:512:LEU:HD11	1:A:524:ALA:HB2	2.03	0.40
1:A:287:ILE:HD12	1:A:287:ILE:HA	1.88	0.40
2:B:3:CYS:HB2	2:B:21:CYS:HB2	1.60	0.40
3:C:249:PRO:HA	3:C:252:ILE:HG12	2.03	0.40
2:B:140:GLU:H	2:B:140:GLU:CD	2.29	0.40
1:A:281:ARG:NH2	3:C:421:MET:HB3	2.36	0.40
2:B:107:LEU:HD11	2:B:238:VAL:HG23	2.04	0.40
3:C:83:LEU:O	3:C:86:LEU:HB2	2.22	0.40

There are no symmetry-related clashes.

5.3 Torsion angles

5.3.1 Protein backbone

In the following table, the Percentiles column shows the percent Ramachandran outliers of the chain as a percentile score with respect to all PDB entries followed by that with respect to all EM entries.

The Analysed column shows the number of residues for which the backbone conformation was analysed, and the total number of residues.

Mol	Chain	Analysed	Favoured	Allowed	Outliers	Percentiles	
1	A	749/763 (98%)	702 (94%)	47 (6%)	0	100	100
2	B	457/469 (97%)	420 (92%)	35 (8%)	2 (0%)	30	57
3	C	418/448 (93%)	406 (97%)	12 (3%)	0	100	100
All	All	1624/1680 (97%)	1528 (94%)	94 (6%)	2 (0%)	49	75

All (2) Ramachandran outliers are listed below:

Mol	Chain	Res	Type
2	B	454	TYR
2	B	35	PRO

5.3.2 Protein sidechains

In the following table, the Percentiles column shows the percent sidechain outliers of the chain as a percentile score with respect to all PDB entries followed by that with respect to all EM entries.

The Analysed column shows the number of residues for which the sidechain conformation was analysed, and the total number of residues.

Mol	Chain	Analysed	Rotameric	Outliers	Percentiles	
1	A	634/644 (98%)	617 (97%)	17 (3%)	39	64
2	B	400/408 (98%)	388 (97%)	12 (3%)	36	62
3	C	346/360 (96%)	342 (99%)	4 (1%)	63	75
All	All	1380/1412 (98%)	1347 (98%)	33 (2%)	43	66

All (33) residues with a non-rotameric sidechain are listed below:

Mol	Chain	Res	Type
1	A	9	MET

Continued on next page...

Continued from previous page...

Mol	Chain	Res	Type
1	A	58	GLU
1	A	125	LEU
1	A	134	ASP
1	A	137	PHE
1	A	174	MET
1	A	210	HIS
1	A	287	ILE
1	A	332	HIS
1	A	402	SER
1	A	405	LEU
1	A	477	VAL
1	A	659	VAL
1	A	665	LEU
1	A	677	ASN
1	A	692	LEU
1	A	718	LEU
2	B	64	GLU
2	B	132	LEU
2	B	140	GLU
2	B	207	ASN
2	B	258	THR
2	B	270	LEU
2	B	309	GLU
2	B	330	VAL
2	B	352	LEU
2	B	404	PHE
2	B	406	ILE
2	B	420	LEU
3	C	224	MET
3	C	234	LEU
3	C	248	LEU
3	C	285	LEU

Sometimes sidechains can be flipped to improve hydrogen bonding and reduce clashes. All (23) such sidechains are listed below:

Mol	Chain	Res	Type
1	A	2	ASN
1	A	24	GLN
1	A	100	ASN
1	A	119	GLN
1	A	298	GLN
1	A	431	ASN

Continued on next page...

Continued from previous page...

Mol	Chain	Res	Type
1	A	465	HIS
1	A	469	GLN
1	A	591	GLN
1	A	624	ASN
1	A	656	GLN
2	B	167	ASN
2	B	350	ASN
2	B	373	GLN
2	B	390	GLN
2	B	400	GLN
2	B	418	GLN
3	C	4	GLN
3	C	202	GLN
3	C	210	GLN
3	C	219	ASN
3	C	281	GLN
3	C	390	ASN

5.3.3 RNA ⓘ

There are no RNA molecules in this entry.

5.4 Non-standard residues in protein, DNA, RNA chains ⓘ

There are no non-standard protein/DNA/RNA residues in this entry.

5.5 Carbohydrates ⓘ

17 monosaccharides are modelled in this entry.

In the following table, the Counts columns list the number of bonds (or angles) for which Mogul statistics could be retrieved, the number of bonds (or angles) that are observed in the model and the number of bonds (or angles) that are defined in the Chemical Component Dictionary. The Link column lists molecule types, if any, to which the group is linked. The Z score for a bond length (or angle) is the number of standard deviations the observed value is removed from the expected value. A bond length (or angle) with $|Z| > 2$ is considered an outlier worth inspection. RMSZ is the root-mean-square of all Z scores of the bond lengths (or angles).

Mol	Type	Chain	Res	Link	Bond lengths			Bond angles		
					Counts	RMSZ	$\# Z > 2$	Counts	RMSZ	$\# Z > 2$
4	NAG	D	1	4,1	14,14,15	0.83	1 (7%)	17,19,21	2.72	3 (17%)

Mol	Type	Chain	Res	Link	Bond lengths			Bond angles		
					Counts	RMSZ	# Z > 2	Counts	RMSZ	# Z > 2
4	NAG	D	2	4	14,14,15	1.07	2 (14%)	17,19,21	1.82	4 (23%)
4	BMA	D	3	4	11,11,12	1.86	2 (18%)	15,15,17	3.80	6 (40%)
5	NAG	E	1	5,1	14,14,15	1.38	2 (14%)	17,19,21	2.33	6 (35%)
5	NAG	E	2	5	14,14,15	0.98	1 (7%)	17,19,21	1.87	3 (17%)
5	BMA	E	3	5	11,11,12	1.72	3 (27%)	15,15,17	3.66	9 (60%)
5	MAN	E	4	5	11,11,12	1.01	1 (9%)	15,15,17	1.09	1 (6%)
5	MAN	E	5	5	11,11,12	1.07	1 (9%)	15,15,17	0.98	1 (6%)
5	NAG	F	1	5,1	14,14,15	1.52	3 (21%)	17,19,21	3.60	6 (35%)
5	NAG	F	2	5	14,14,15	0.73	0	17,19,21	1.70	3 (17%)
5	BMA	F	3	5	11,11,12	0.90	0	15,15,17	2.61	8 (53%)
5	MAN	F	4	5	11,11,12	0.71	0	15,15,17	1.52	1 (6%)
5	MAN	F	5	5	11,11,12	0.75	0	15,15,17	1.53	1 (6%)
6	NAG	G	1	2,6	14,14,15	2.79	4 (28%)	17,19,21	5.43	7 (41%)
6	NAG	G	2	6	14,14,15	0.93	1 (7%)	17,19,21	1.83	3 (17%)
6	NAG	H	1	2,6	14,14,15	0.72	0	17,19,21	1.93	3 (17%)
6	NAG	H	2	6	14,14,15	0.74	0	17,19,21	1.18	2 (11%)

In the following table, the Chirals column lists the number of chiral outliers, the number of chiral centers analysed, the number of these observed in the model and the number defined in the Chemical Component Dictionary. Similar counts are reported in the Torsion and Rings columns. '-' means no outliers of that kind were identified.

Mol	Type	Chain	Res	Link	Chirals	Torsions	Rings
4	NAG	D	1	4,1	-	1/6/23/26	0/1/1/1
4	NAG	D	2	4	-	0/6/23/26	0/1/1/1
4	BMA	D	3	4	-	0/2/19/22	0/1/1/1
5	NAG	E	1	5,1	-	0/6/23/26	0/1/1/1
5	NAG	E	2	5	-	0/6/23/26	0/1/1/1
5	BMA	E	3	5	-	1/2/19/22	1/1/1/1
5	MAN	E	4	5	-	0/2/19/22	0/1/1/1
5	MAN	E	5	5	-	0/2/19/22	0/1/1/1
5	NAG	F	1	5,1	-	0/6/23/26	0/1/1/1
5	NAG	F	2	5	-	2/6/23/26	0/1/1/1
5	BMA	F	3	5	-	0/2/19/22	0/1/1/1
5	MAN	F	4	5	-	0/2/19/22	0/1/1/1
5	MAN	F	5	5	-	0/2/19/22	0/1/1/1
6	NAG	G	1	2,6	-	0/6/23/26	0/1/1/1
6	NAG	G	2	6	-	0/6/23/26	0/1/1/1
6	NAG	H	1	2,6	-	0/6/23/26	0/1/1/1

Continued on next page...

Continued from previous page...

Mol	Type	Chain	Res	Link	Chirals	Torsions	Rings
6	NAG	H	2	6	-	0/6/23/26	0/1/1/1

All (21) bond length outliers are listed below:

Mol	Chain	Res	Type	Atoms	Z	Observed(Å)	Ideal(Å)
6	G	1	NAG	O5-C5	7.01	1.57	1.43
4	D	3	BMA	O5-C1	-4.69	1.35	1.43
6	G	1	NAG	C2-N2	-4.44	1.38	1.46
6	G	1	NAG	O5-C1	4.10	1.50	1.43
6	G	1	NAG	C1-C2	-4.03	1.46	1.52
5	F	1	NAG	C2-N2	-3.54	1.40	1.46
5	E	3	BMA	O2-C2	-3.51	1.36	1.43
5	E	3	BMA	O5-C5	-3.35	1.36	1.43
4	D	3	BMA	O5-C5	-3.24	1.37	1.43
5	F	1	NAG	C1-C2	-3.16	1.48	1.52
5	E	1	NAG	C1-C2	3.12	1.56	1.52
5	E	1	NAG	O5-C1	-2.90	1.38	1.43
5	E	4	MAN	O5-C1	-2.72	1.39	1.43
4	D	2	NAG	O5-C1	-2.71	1.39	1.43
5	E	2	NAG	O4-C4	-2.60	1.36	1.43
4	D	1	NAG	C2-N2	-2.59	1.42	1.46
6	G	2	NAG	O5-C1	-2.39	1.39	1.43
5	F	1	NAG	O5-C5	2.26	1.47	1.43
5	E	5	MAN	O5-C1	-2.26	1.39	1.43
5	E	3	BMA	O5-C1	-2.08	1.40	1.43
4	D	2	NAG	O4-C4	-2.04	1.37	1.43

All (67) bond angle outliers are listed below:

Mol	Chain	Res	Type	Atoms	Z	Observed(°)	Ideal(°)
6	G	1	NAG	O5-C1-C2	-13.64	90.18	111.29
4	D	3	BMA	C1-O5-C5	12.29	128.66	112.19
6	G	1	NAG	C1-O5-C5	10.72	126.56	112.19
6	G	1	NAG	O5-C5-C6	9.72	126.58	107.66
4	D	1	NAG	C1-O5-C5	9.37	124.74	112.19
6	G	1	NAG	C1-C2-N2	-8.44	97.14	110.43
5	F	1	NAG	C1-C2-N2	-8.23	97.46	110.43
5	E	3	BMA	C1-O5-C5	7.92	122.80	112.19
5	F	1	NAG	C1-O5-C5	7.05	121.64	112.19
5	F	3	BMA	C1-O5-C5	7.04	121.62	112.19
5	F	1	NAG	O5-C1-C2	-6.99	100.48	111.29
5	E	3	BMA	O2-C2-C3	6.61	123.83	110.15

Continued on next page...

Continued from previous page...

Mol	Chain	Res	Type	Atoms	Z	Observed(°)	Ideal(°)
6	H	1	NAG	C1-O5-C5	6.10	120.36	112.19
6	G	2	NAG	C1-O5-C5	6.06	120.30	112.19
5	E	2	NAG	O3-C3-C4	5.23	122.70	110.38
5	F	1	NAG	O5-C5-C6	4.99	117.37	107.66
5	E	1	NAG	O5-C5-C6	-4.96	98.01	107.66
5	F	2	NAG	C1-O5-C5	4.93	118.79	112.19
5	E	3	BMA	C2-C3-C4	4.85	119.39	110.86
5	F	4	MAN	C1-O5-C5	4.47	118.17	112.19
5	E	3	BMA	O2-C2-C1	4.37	119.23	109.22
4	D	3	BMA	O2-C2-C1	4.28	119.02	109.22
5	E	2	NAG	O3-C3-C2	-4.15	100.77	109.40
5	F	5	MAN	C1-O5-C5	4.13	117.72	112.19
5	E	1	NAG	C1-C2-N2	4.05	116.82	110.43
4	D	1	NAG	O3-C3-C2	-3.99	101.12	109.40
5	E	4	MAN	C1-O5-C5	3.96	117.49	112.19
5	E	3	BMA	C3-C4-C5	-3.91	103.14	110.23
4	D	2	NAG	C1-O5-C5	3.90	117.41	112.19
4	D	2	NAG	O4-C4-C3	-3.89	101.22	110.38
6	H	1	NAG	O4-C4-C5	3.73	118.51	109.32
6	G	2	NAG	O5-C1-C2	-3.61	105.70	111.29
5	E	1	NAG	C1-O5-C5	3.59	117.00	112.19
4	D	3	BMA	C1-C2-C3	3.57	114.84	109.64
5	E	3	BMA	O3-C3-C4	3.37	118.32	110.38
5	E	1	NAG	C2-N2-C7	3.29	127.31	122.90
4	D	2	NAG	O4-C4-C5	3.29	117.42	109.32
5	F	1	NAG	O3-C3-C2	-3.16	102.83	109.40
5	E	1	NAG	O3-C3-C2	3.11	115.87	109.40
4	D	3	BMA	O3-C3-C4	3.09	117.65	110.38
6	G	1	NAG	C3-C4-C5	-3.08	104.64	110.23
5	F	3	BMA	C3-C4-C5	3.04	115.74	110.23
4	D	2	NAG	O5-C1-C2	-2.97	106.70	111.29
5	E	1	NAG	C6-C5-C4	2.94	120.23	113.02
5	F	2	NAG	O4-C4-C3	2.89	117.20	110.38
6	G	1	NAG	O3-C3-C2	-2.84	103.51	109.40
5	F	3	BMA	C2-C3-C4	2.76	115.71	110.86
5	F	2	NAG	O3-C3-C2	-2.75	103.69	109.40
4	D	3	BMA	C3-C4-C5	-2.72	105.30	110.23
5	E	3	BMA	O5-C5-C6	-2.70	102.40	107.66
6	H	2	NAG	C1-O5-C5	2.70	115.80	112.19
5	E	3	BMA	O5-C5-C4	2.57	117.08	110.83
5	F	3	BMA	O2-C2-C3	2.47	115.28	110.15
5	F	3	BMA	C1-C2-C3	-2.47	106.05	109.64

Continued on next page...

Continued from previous page...

Mol	Chain	Res	Type	Atoms	Z	Observed(°)	Ideal(°)
5	F	3	BMA	O3-C3-C4	2.46	116.18	110.38
6	H	2	NAG	O5-C1-C2	-2.45	107.49	111.29
5	F	3	BMA	O4-C4-C3	-2.42	104.67	110.38
4	D	3	BMA	O2-C2-C3	2.33	114.97	110.15
5	F	3	BMA	O5-C5-C4	2.30	116.42	110.83
6	G	1	NAG	C4-C3-C2	2.29	114.38	111.02
6	H	1	NAG	C4-C3-C2	-2.29	107.66	111.02
5	E	5	MAN	C1-O5-C5	2.29	115.26	112.19
5	E	2	NAG	O4-C4-C5	2.26	114.89	109.32
6	G	2	NAG	O5-C5-C4	-2.25	105.36	110.83
5	E	3	BMA	O3-C3-C2	-2.23	105.50	110.05
5	F	1	NAG	O4-C4-C3	-2.12	105.38	110.38
4	D	1	NAG	O5-C1-C2	2.01	114.40	111.29

There are no chirality outliers.

All (4) torsion outliers are listed below:

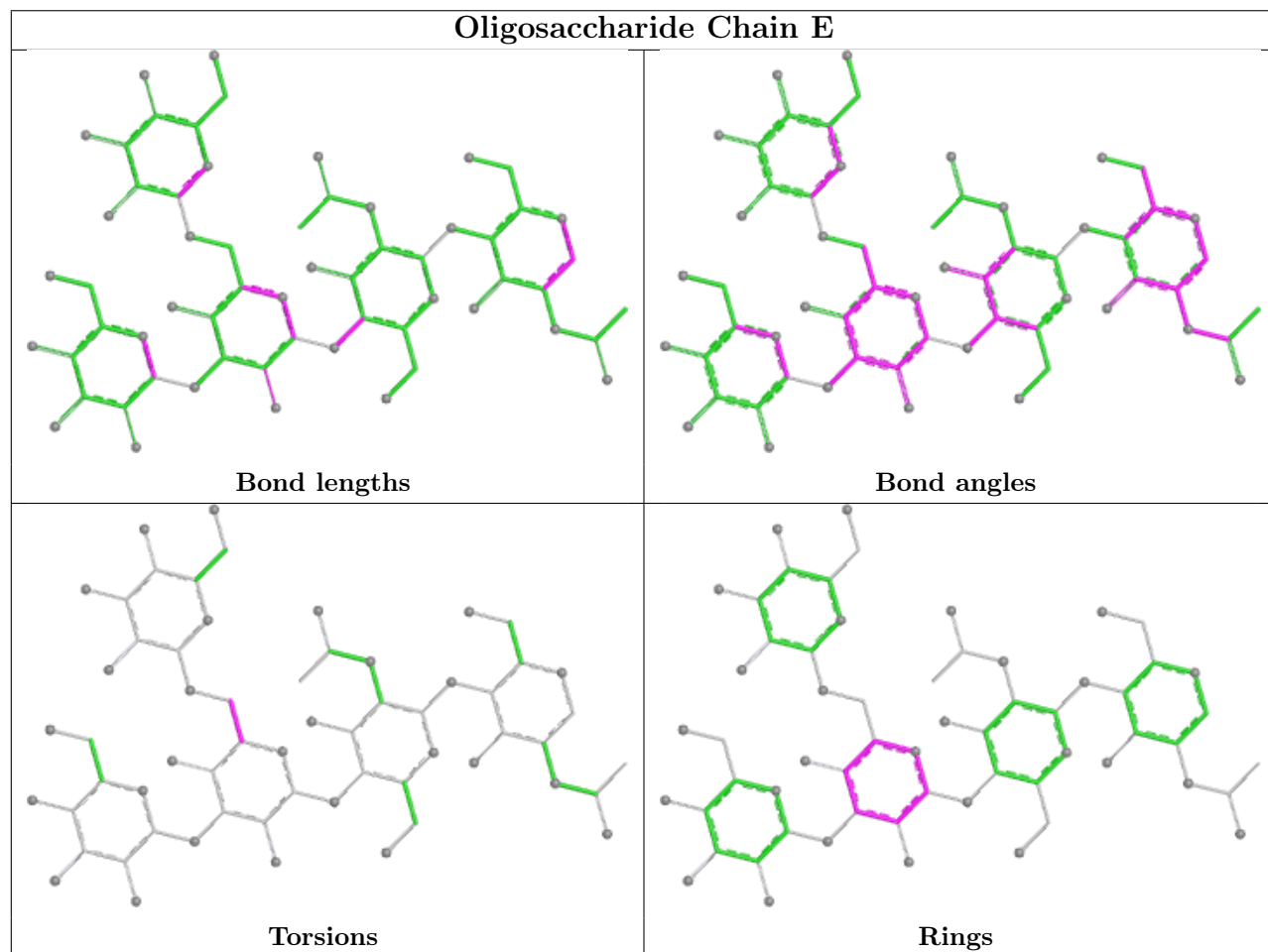
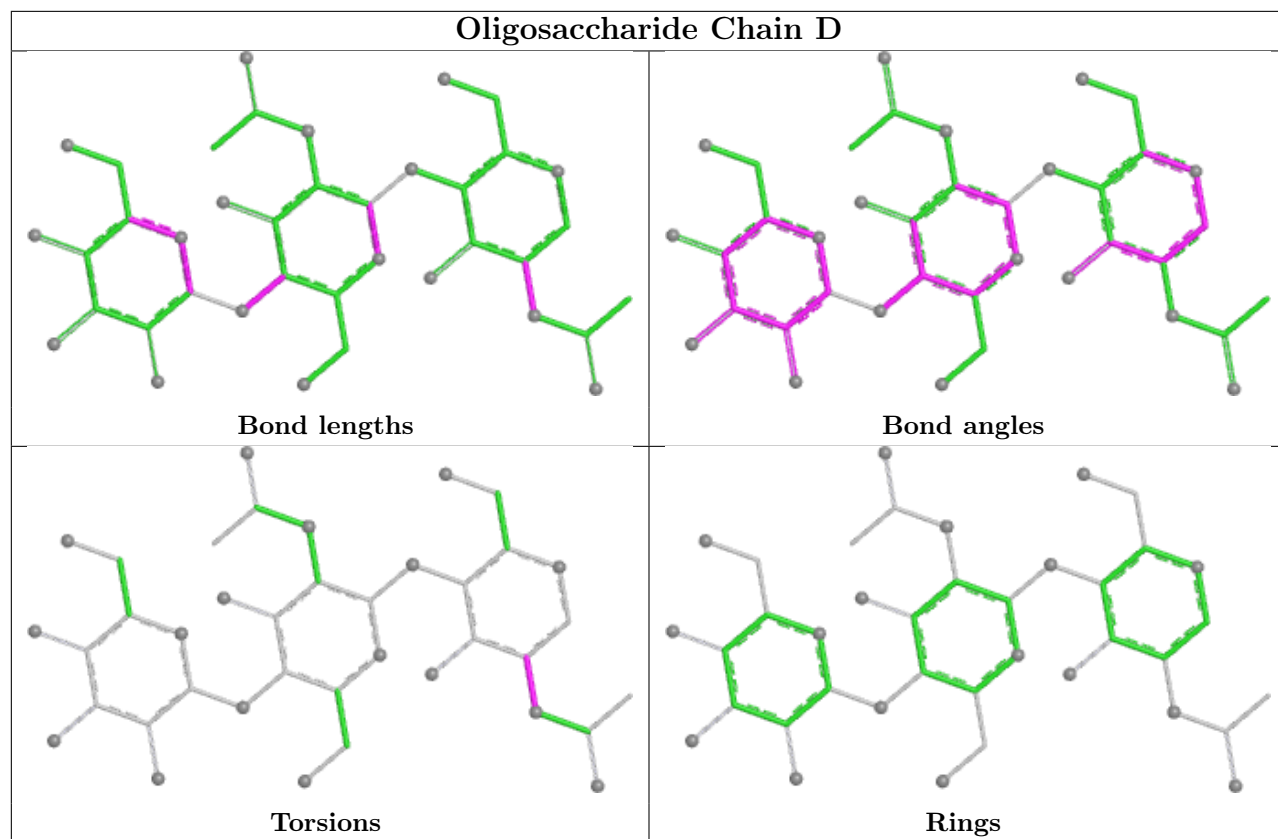
Mol	Chain	Res	Type	Atoms
5	F	2	NAG	O5-C5-C6-O6
5	E	3	BMA	O5-C5-C6-O6
5	F	2	NAG	C4-C5-C6-O6
4	D	1	NAG	C1-C2-N2-C7

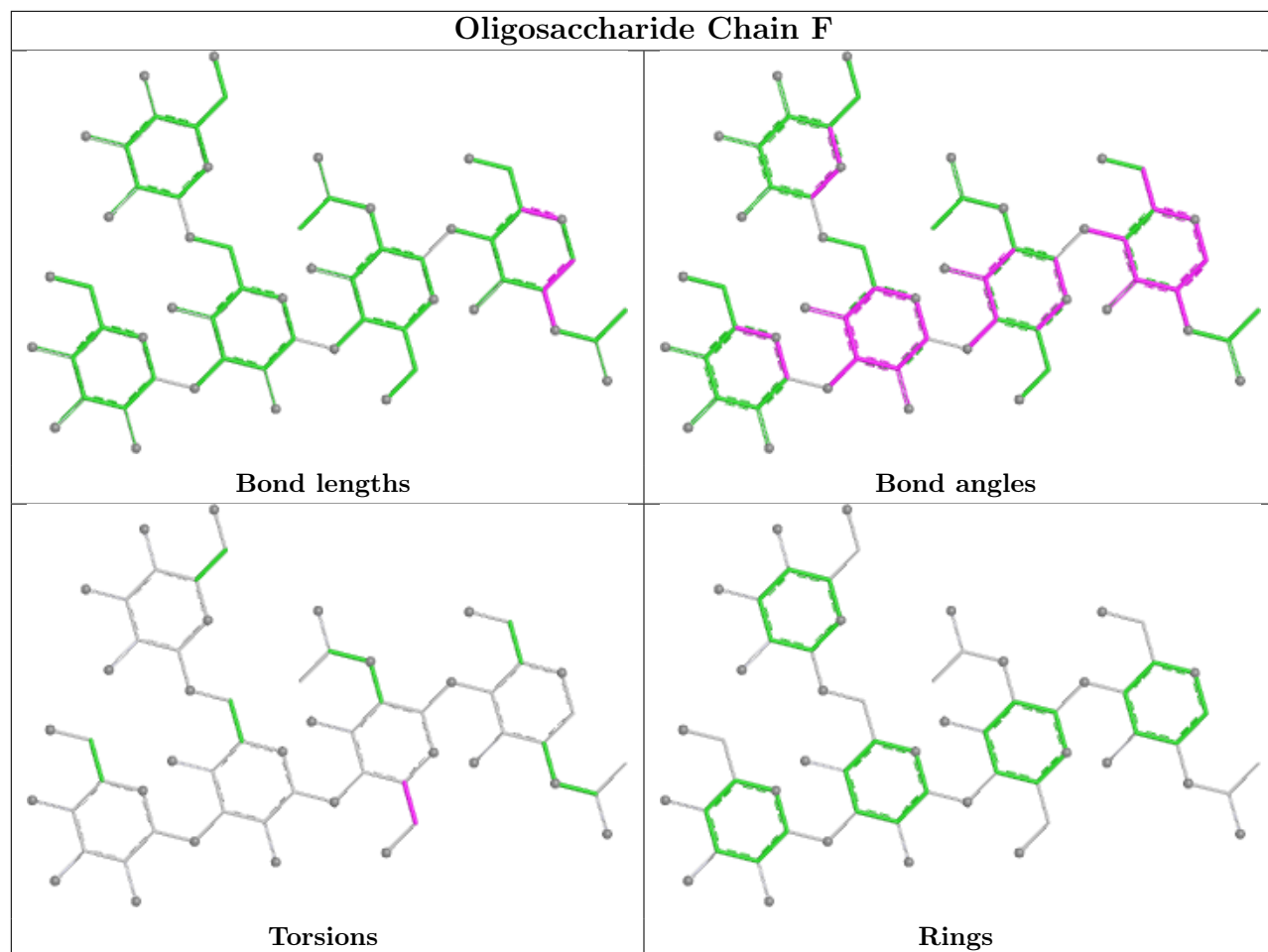
All (1) ring outliers are listed below:

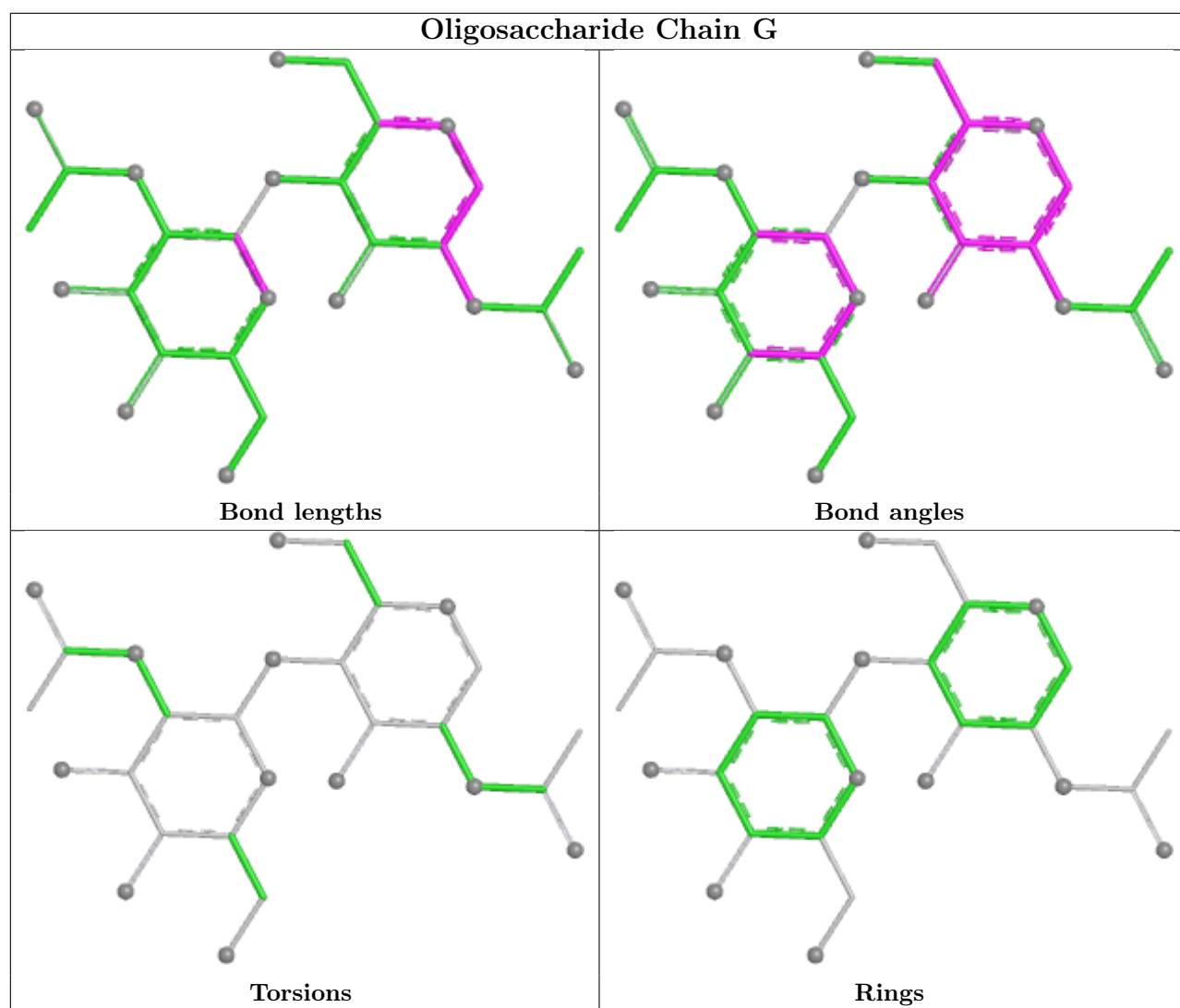
Mol	Chain	Res	Type	Atoms
5	E	3	BMA	C1-C2-C3-C4-C5-O5

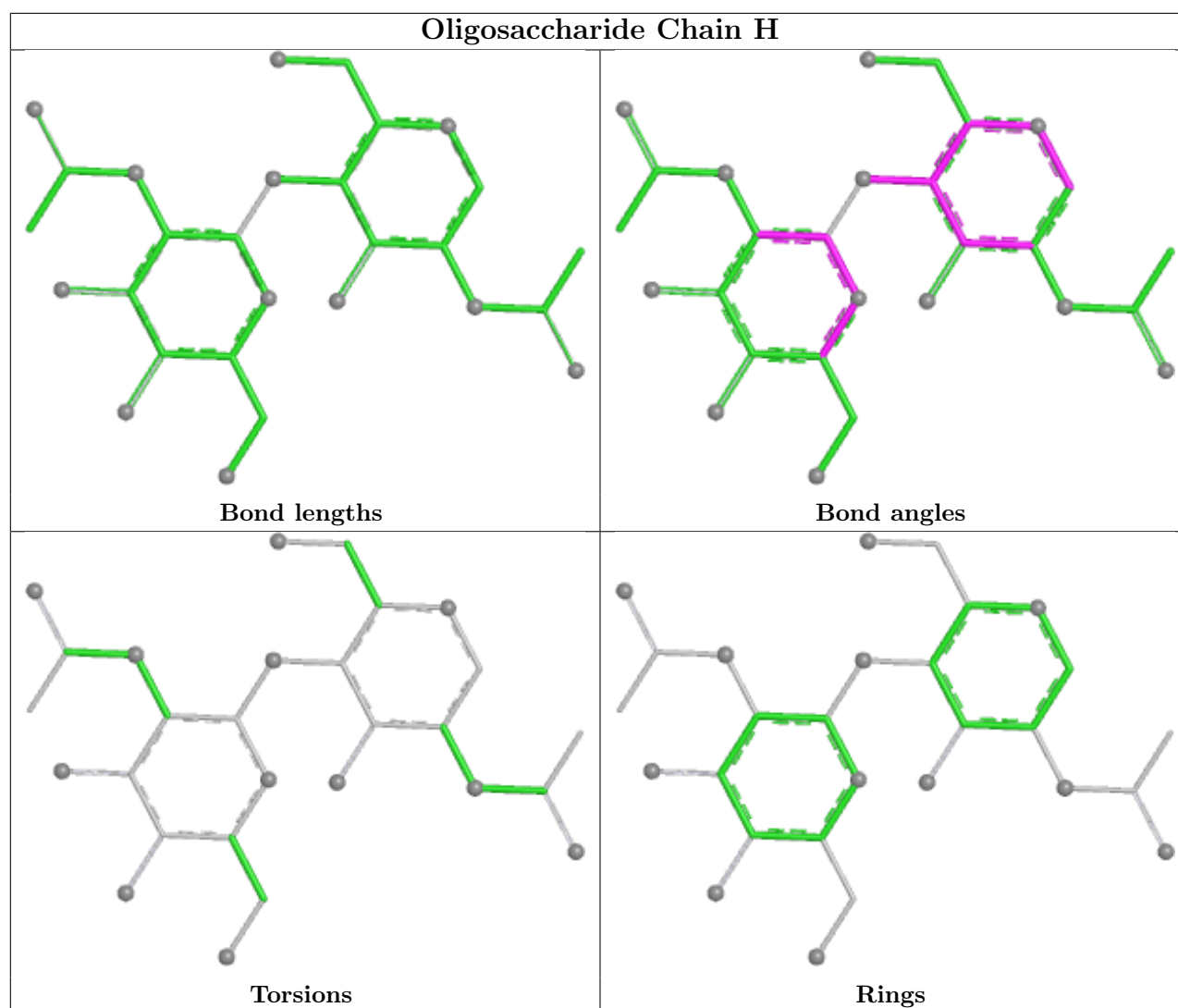
No monomer is involved in short contacts.

The following is a two-dimensional graphical depiction of Mogul quality analysis of bond lengths, bond angles, torsion angles, and ring geometry for oligosaccharide.









5.6 Ligand geometry [i](#)

Of 10 ligands modelled in this entry, 7 are monoatomic - leaving 3 for Mogul analysis.

In the following table, the Counts columns list the number of bonds (or angles) for which Mogul statistics could be retrieved, the number of bonds (or angles) that are observed in the model and the number of bonds (or angles) that are defined in the Chemical Component Dictionary. The Link column lists molecule types, if any, to which the group is linked. The Z score for a bond length (or angle) is the number of standard deviations the observed value is removed from the expected value. A bond length (or angle) with $|Z| > 2$ is considered an outlier worth inspection. RMSZ is the root-mean-square of all Z scores of the bond lengths (or angles).

Mol	Type	Chain	Res	Link	Bond lengths			Bond angles		
					Counts	RMSZ	$\# Z > 2$	Counts	RMSZ	$\# Z > 2$
9	NAG	A	1206	1	14,14,15	0.77	0	17,19,21	1.51	4 (23%)
9	NAG	A	1205	1	14,14,15	1.30	3 (21%)	17,19,21	3.58	7 (41%)
9	NAG	B	2004	2	14,14,15	1.68	2 (14%)	17,19,21	5.18	5 (29%)

In the following table, the Chirals column lists the number of chiral outliers, the number of chiral centers analysed, the number of these observed in the model and the number defined in the Chemical Component Dictionary. Similar counts are reported in the Torsion and Rings columns. '-' means no outliers of that kind were identified.

Mol	Type	Chain	Res	Link	Chirals	Torsions	Rings
9	NAG	A	1206	1	-	1/6/23/26	0/1/1/1
9	NAG	A	1205	1	-	0/6/23/26	0/1/1/1
9	NAG	B	2004	2	-	2/6/23/26	0/1/1/1

All (5) bond length outliers are listed below:

Mol	Chain	Res	Type	Atoms	Z	Observed(Å)	Ideal(Å)
9	B	2004	NAG	C1-C2	4.99	1.59	1.52
9	A	1205	NAG	C1-C2	-3.40	1.47	1.52
9	B	2004	NAG	C3-C2	2.76	1.58	1.52
9	A	1205	NAG	O5-C1	-2.11	1.40	1.43
9	A	1205	NAG	O5-C5	2.05	1.47	1.43

All (16) bond angle outliers are listed below:

Mol	Chain	Res	Type	Atoms	Z	Observed(°)	Ideal(°)
9	B	2004	NAG	O5-C1-C2	-13.10	91.03	111.29
9	B	2004	NAG	C1-C2-N2	10.26	126.59	110.43
9	A	1205	NAG	C1-O5-C5	9.20	124.52	112.19
9	B	2004	NAG	C2-N2-C7	8.66	134.51	122.90
9	B	2004	NAG	C1-O5-C5	-7.56	102.05	112.19
9	B	2004	NAG	O3-C3-C2	5.93	121.72	109.40
9	A	1205	NAG	O5-C5-C6	5.29	117.96	107.66
9	A	1205	NAG	C2-N2-C7	-5.20	115.93	122.90
9	A	1205	NAG	O5-C1-C2	4.67	118.51	111.29
9	A	1205	NAG	O3-C3-C2	-4.55	99.95	109.40
9	A	1205	NAG	C3-C4-C5	-3.51	103.86	110.23
9	A	1206	NAG	C1-O5-C5	-3.01	108.16	112.19
9	A	1205	NAG	O4-C4-C5	2.74	116.06	109.32
9	A	1206	NAG	C2-N2-C7	2.69	126.50	122.90
9	A	1206	NAG	O5-C5-C6	2.15	111.85	107.66
9	A	1206	NAG	C4-C3-C2	2.07	114.05	111.02

There are no chirality outliers.

All (3) torsion outliers are listed below:

Mol	Chain	Res	Type	Atoms
9	B	2004	NAG	C4-C5-C6-O6

Continued on next page...

Continued from previous page...

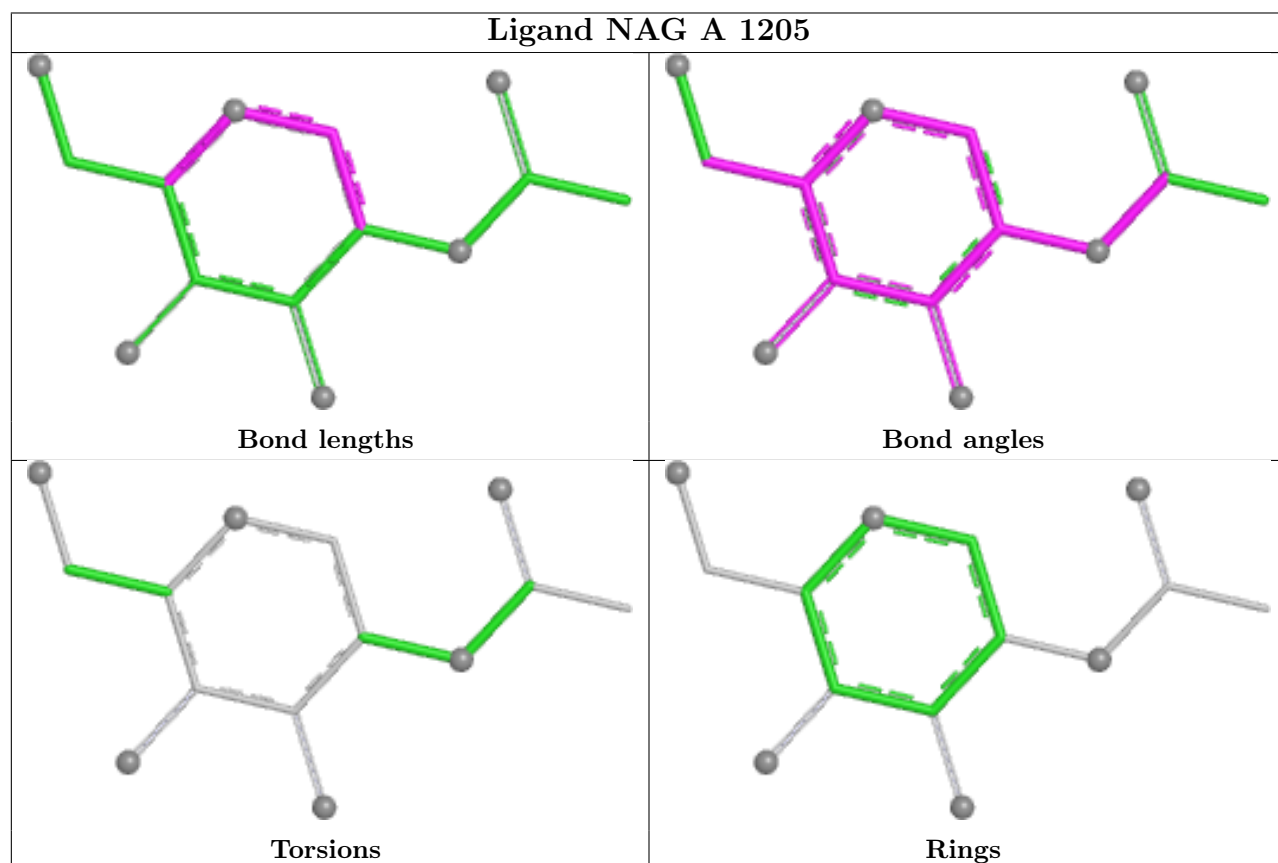
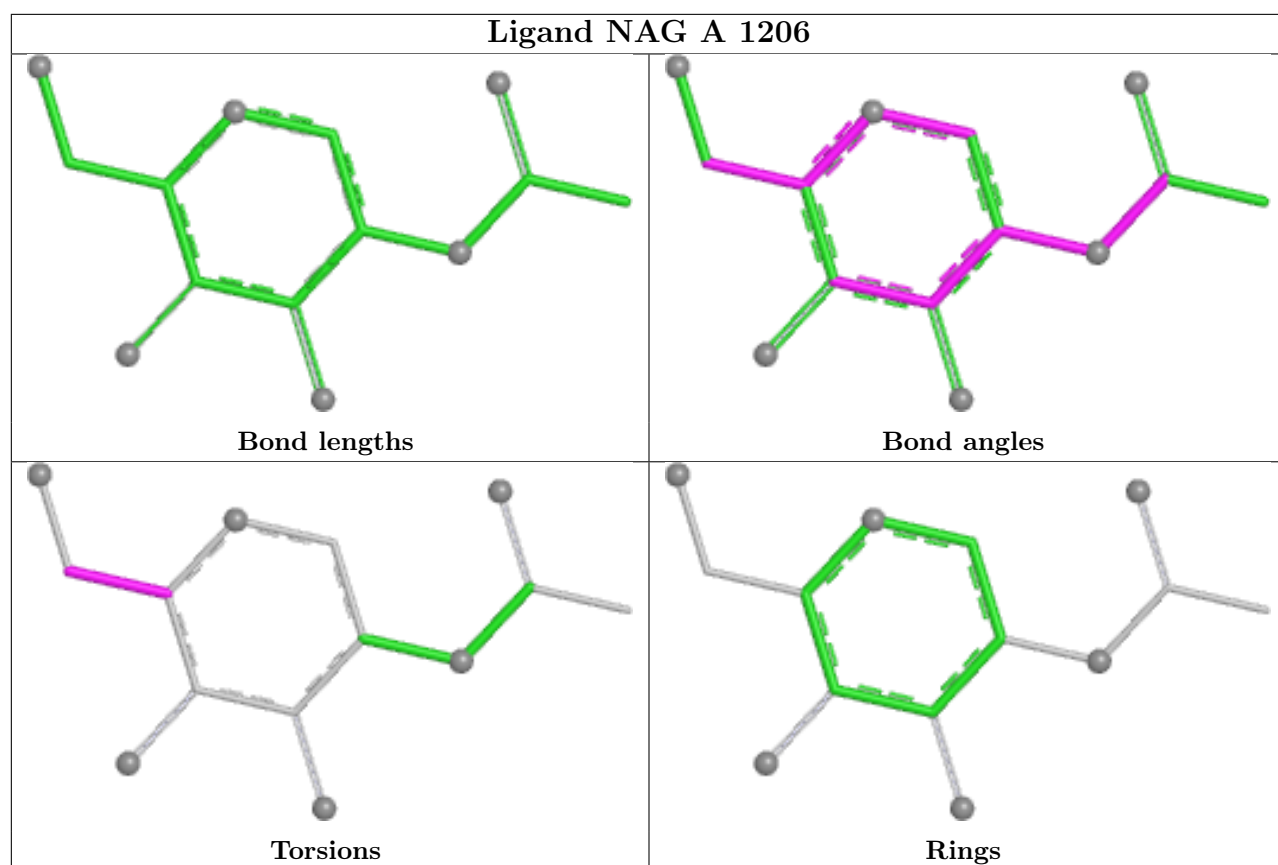
Mol	Chain	Res	Type	Atoms
9	B	2004	NAG	O5-C5-C6-O6
9	A	1206	NAG	C4-C5-C6-O6

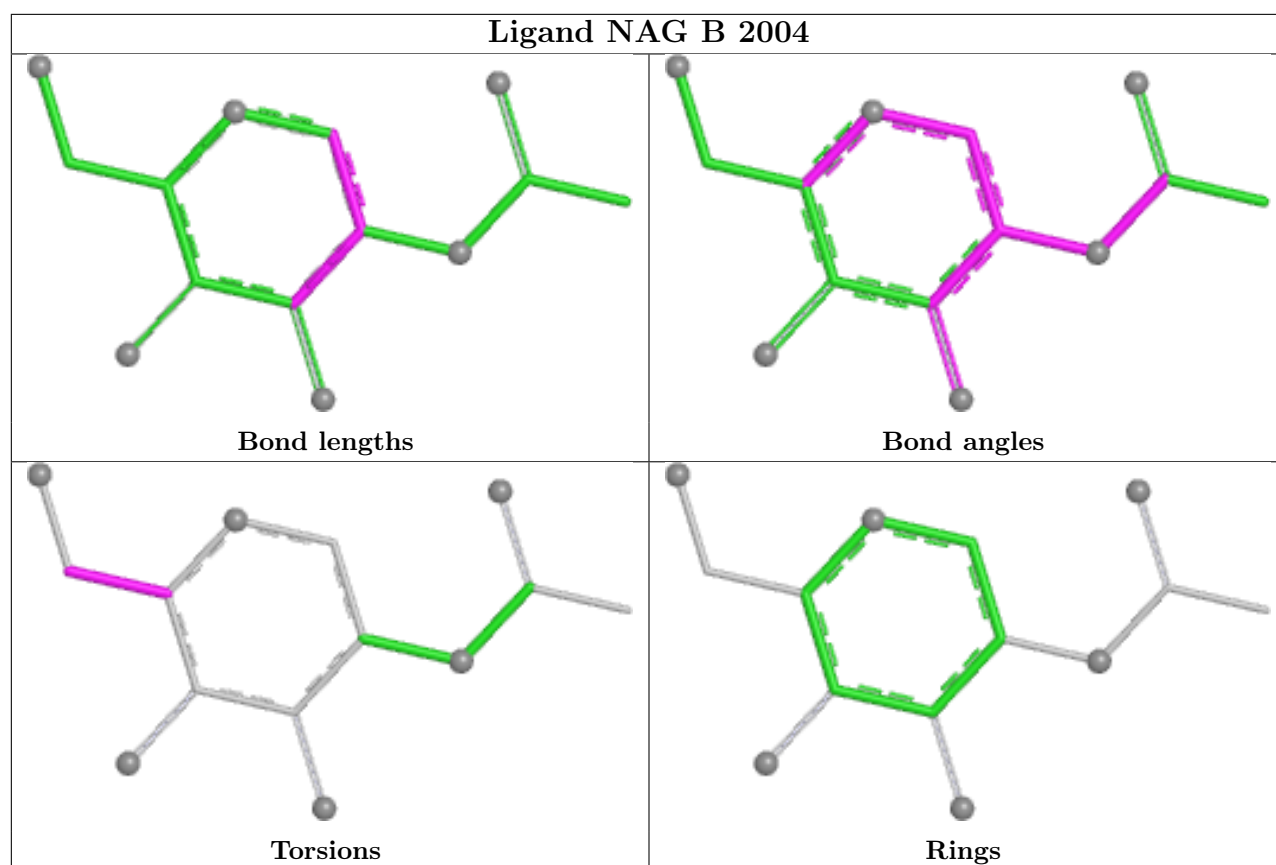
There are no ring outliers.

1 monomer is involved in 1 short contact:

Mol	Chain	Res	Type	Clashes	Symm-Clashes
9	A	1205	NAG	1	0

The following is a two-dimensional graphical depiction of Mogul quality analysis of bond lengths, bond angles, torsion angles, and ring geometry for all instances of the Ligand of Interest. In addition, ligands with molecular weight > 250 and outliers as shown on the validation Tables will also be included. For torsion angles, if less than 5% of the Mogul distribution of torsion angles is within 10 degrees of the torsion angle in question, then that torsion angle is considered an outlier. Any bond that is central to one or more torsion angles identified as an outlier by Mogul will be highlighted in the graph. For rings, the root-mean-square deviation (RMSD) between the ring in question and similar rings identified by Mogul is calculated over all ring torsion angles. If the average RMSD is greater than 60 degrees and the minimal RMSD between the ring in question and any Mogul-identified rings is also greater than 60 degrees, then that ring is considered an outlier. The outliers are highlighted in purple. The color gray indicates Mogul did not find sufficient equivalents in the CSD to analyse the geometry.





5.7 Other polymers [i](#)

There are no such residues in this entry.

5.8 Polymer linkage issues [i](#)

There are no chain breaks in this entry.

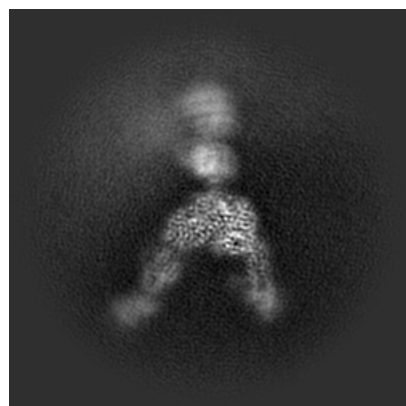
6 Map visualisation [i](#)

This section contains visualisations of the EMDB entry EMD-55596. These allow visual inspection of the internal detail of the map and identification of artifacts.

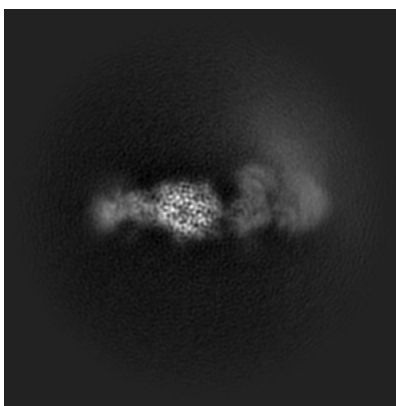
Images derived from a raw map, generated by summing the deposited half-maps, are presented below the corresponding image components of the primary map to allow further visual inspection and comparison with those of the primary map.

6.1 Orthogonal projections [i](#)

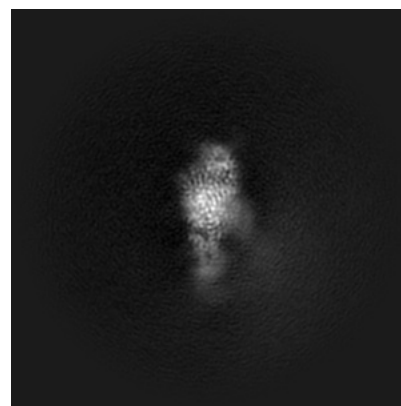
6.1.1 Primary map



X

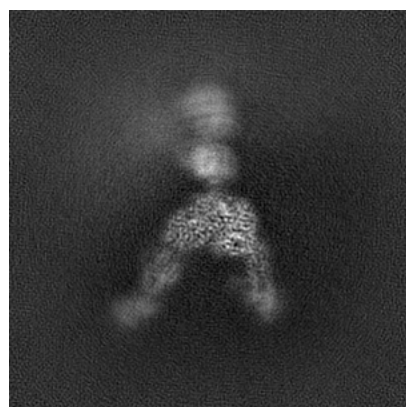


Y

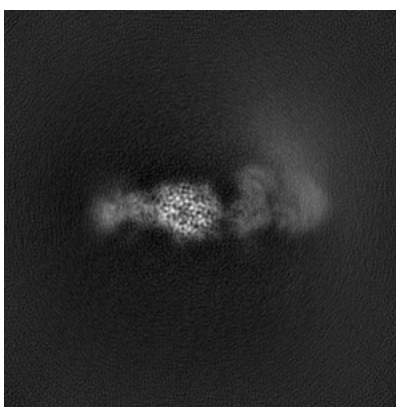


Z

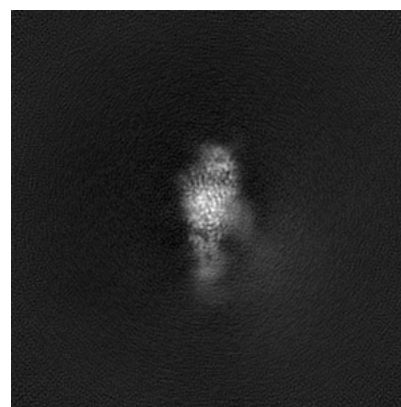
6.1.2 Raw map



X



Y

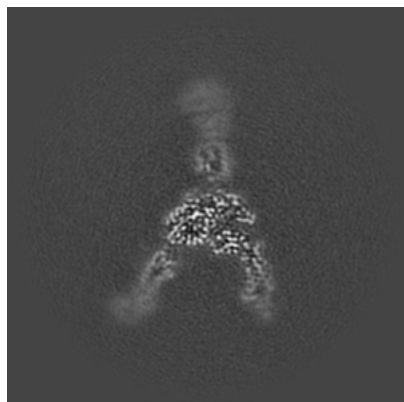


Z

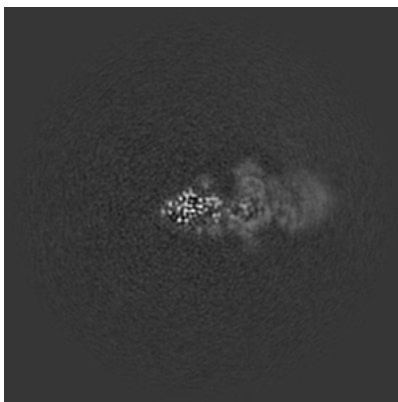
The images above show the map projected in three orthogonal directions.

6.2 Central slices [i](#)

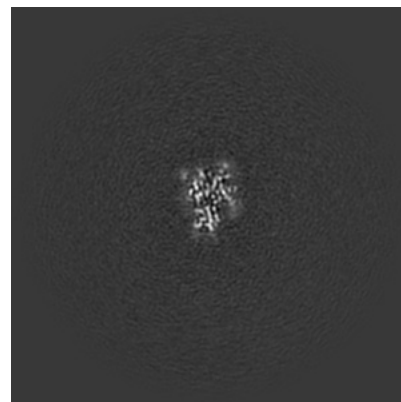
6.2.1 Primary map



X Index: 128



Y Index: 128

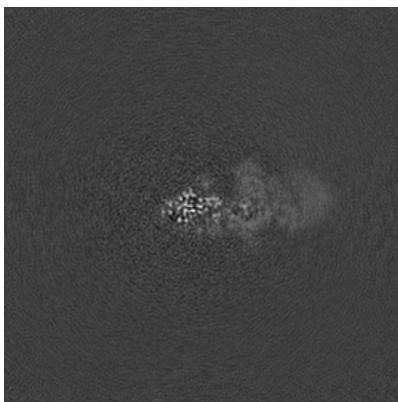


Z Index: 128

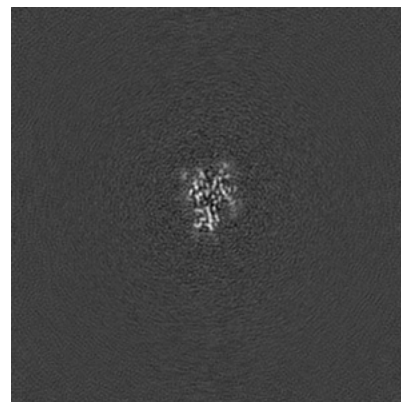
6.2.2 Raw map



X Index: 128



Y Index: 128

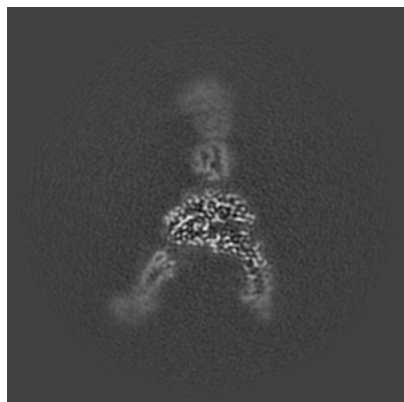


Z Index: 128

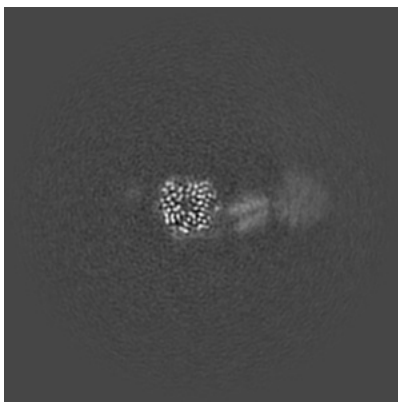
The images above show central slices of the map in three orthogonal directions.

6.3 Largest variance slices [i](#)

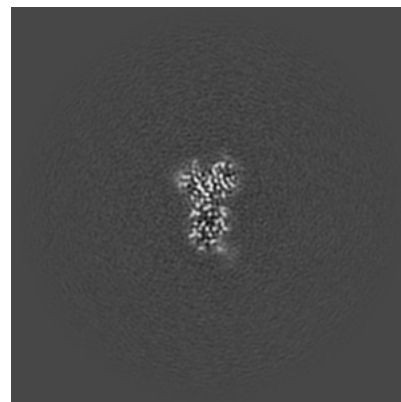
6.3.1 Primary map



X Index: 129



Y Index: 139

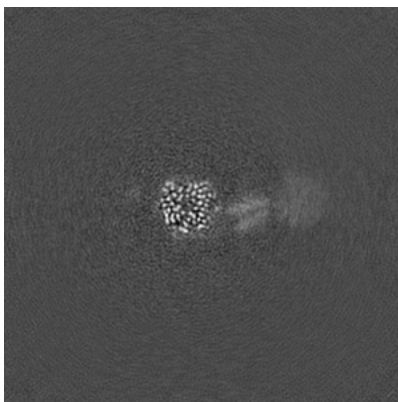


Z Index: 111

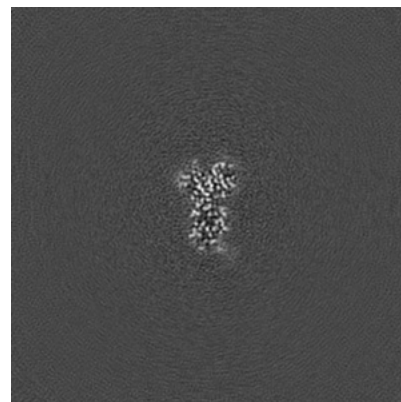
6.3.2 Raw map



X Index: 129



Y Index: 139

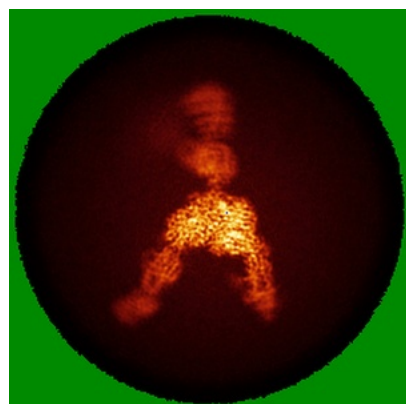


Z Index: 111

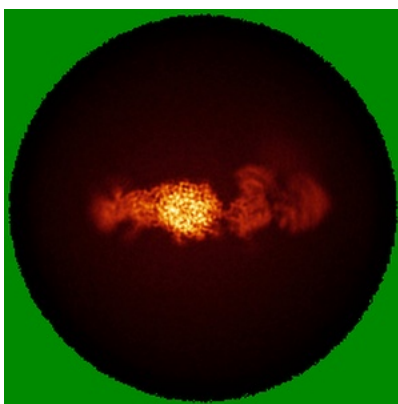
The images above show the largest variance slices of the map in three orthogonal directions.

6.4 Orthogonal standard-deviation projections (False-color) ⓘ

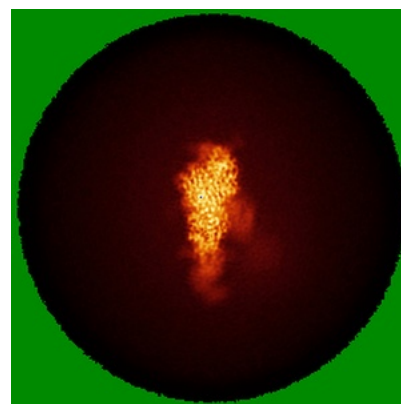
6.4.1 Primary map



X

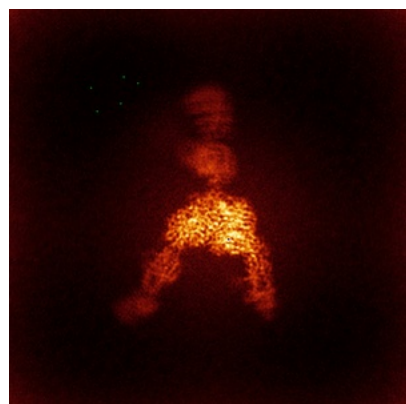


Y

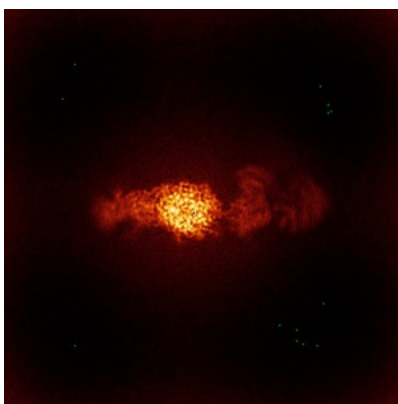


Z

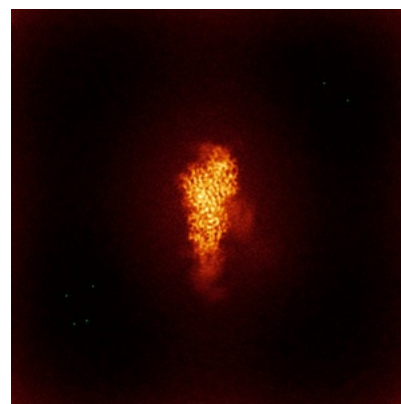
6.4.2 Raw map



X



Y

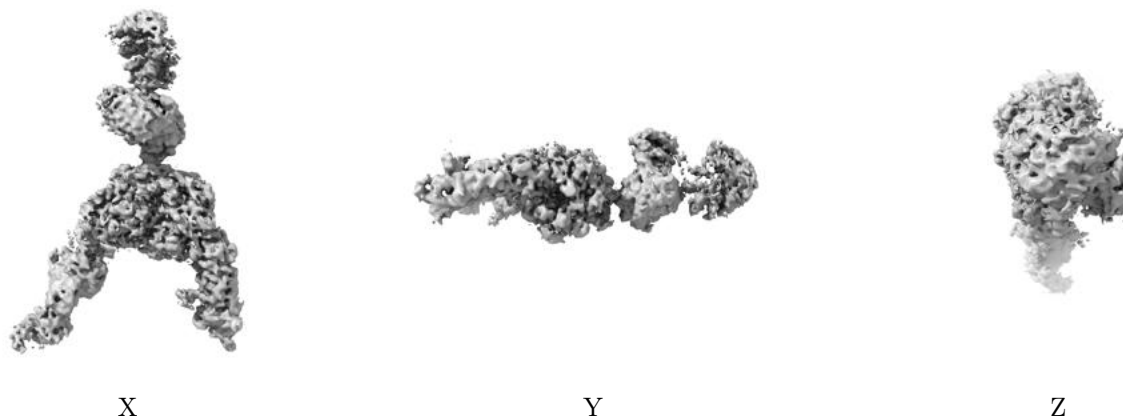


Z

The images above show the map standard deviation projections with false color in three orthogonal directions. Minimum values are shown in green, max in blue, and dark to light orange shades represent small to large values respectively.

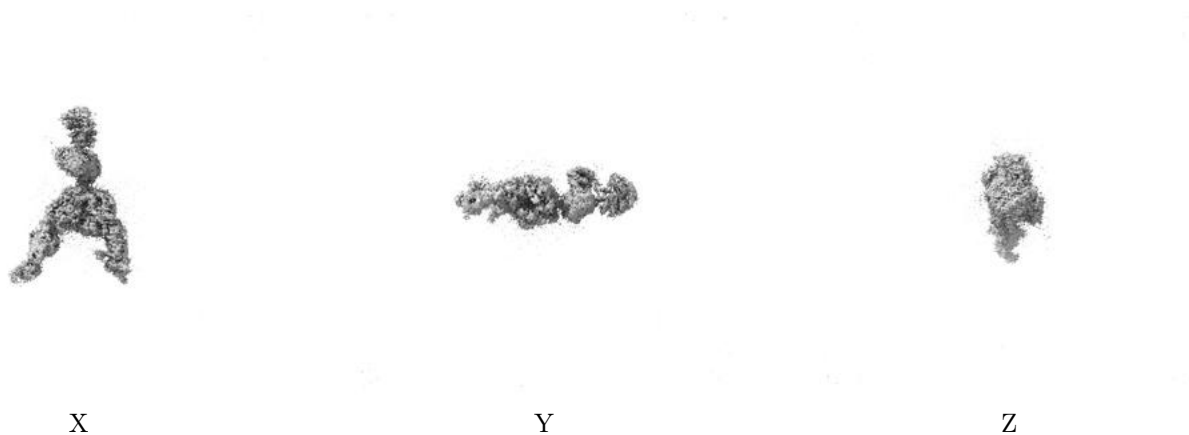
6.5 Orthogonal surface views [i](#)

6.5.1 Primary map



The images above show the 3D surface view of the map at the recommended contour level 0.18. These images, in conjunction with the slice images, may facilitate assessment of whether an appropriate contour level has been provided.

6.5.2 Raw map



These images show the 3D surface of the raw map. The raw map's contour level was selected so that its surface encloses the same volume as the primary map does at its recommended contour level.

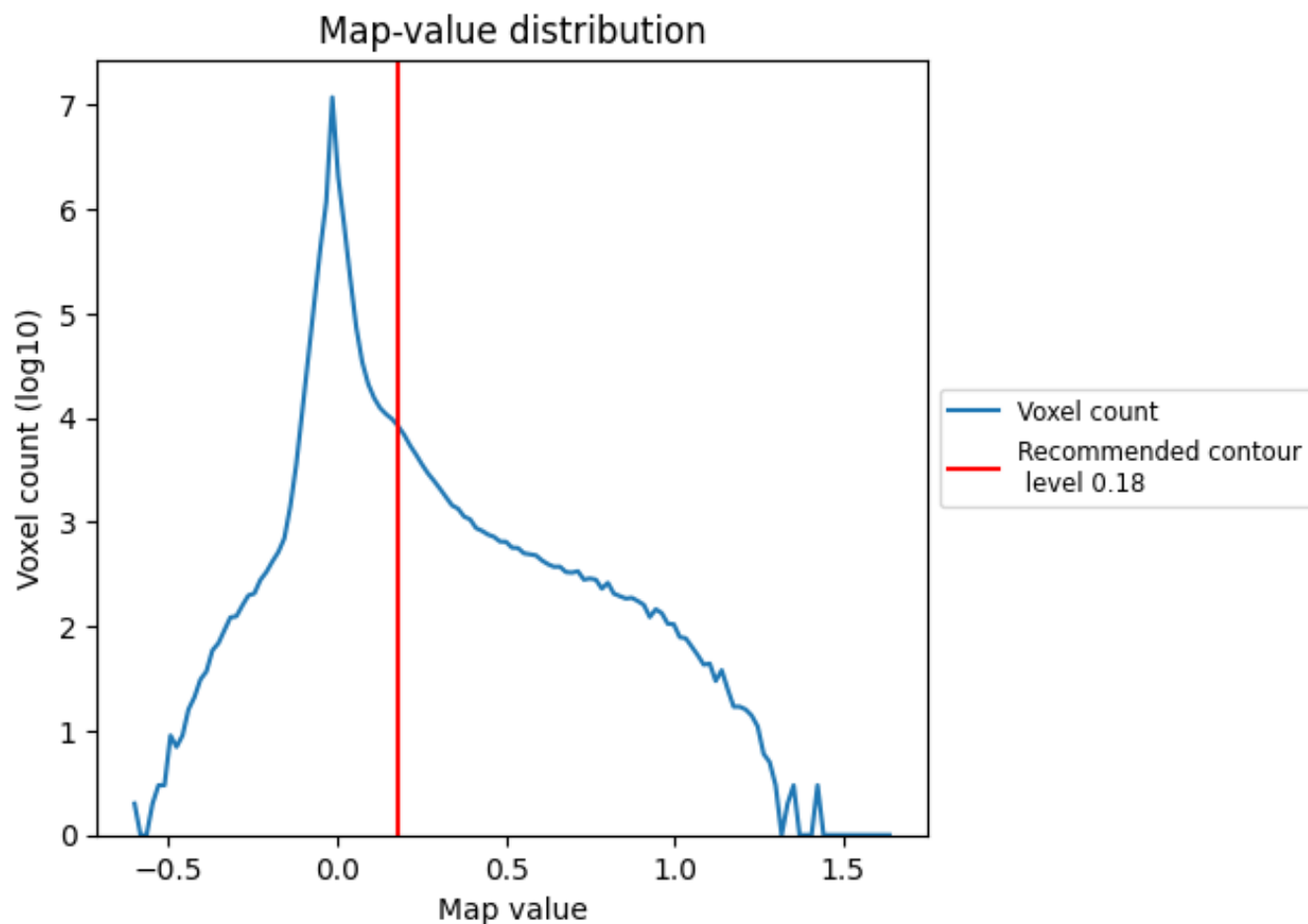
6.6 Mask visualisation [i](#)

This section was not generated. No masks/segmentation were deposited.

7 Map analysis [i](#)

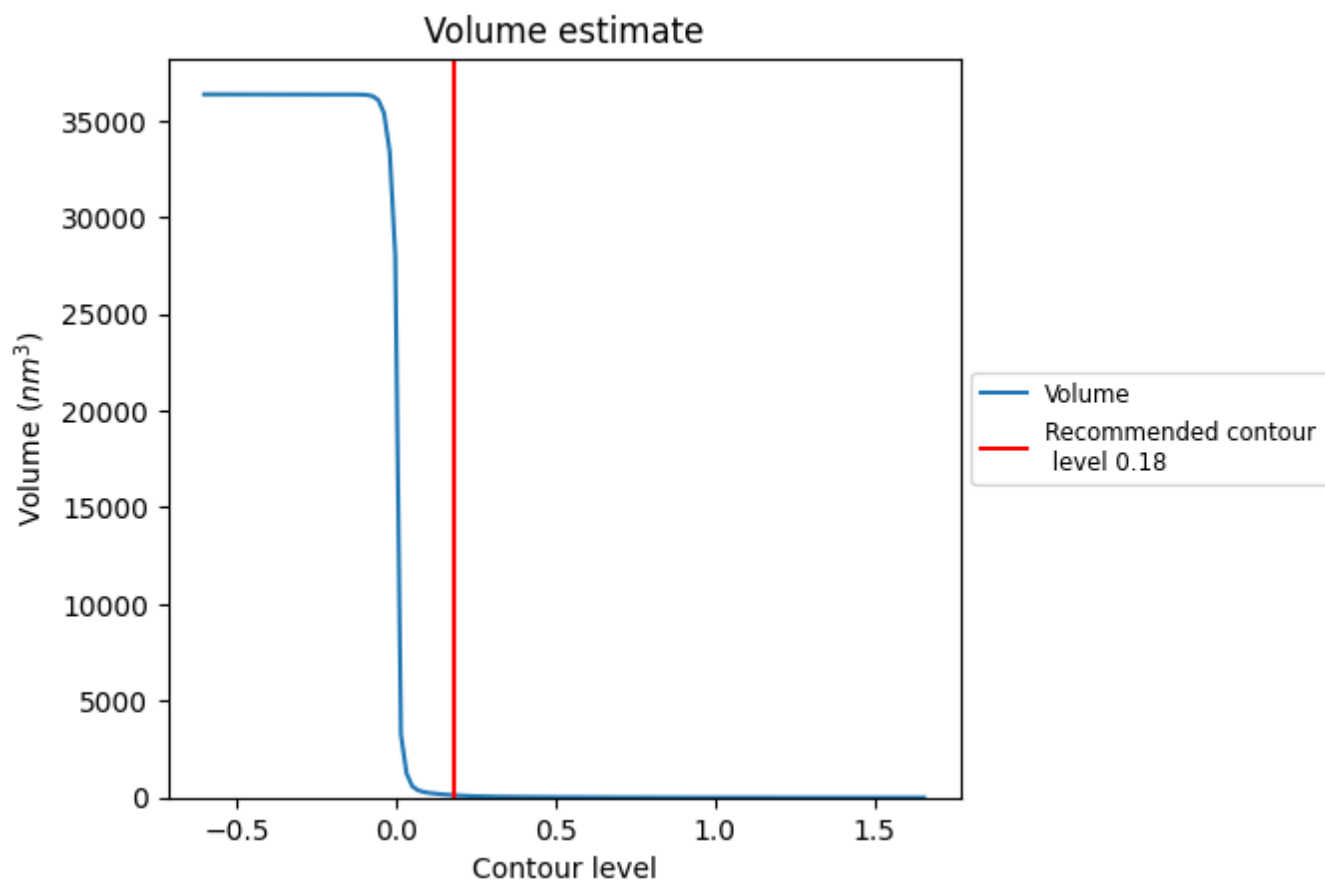
This section contains the results of statistical analysis of the map.

7.1 Map-value distribution [i](#)



The map-value distribution is plotted in 128 intervals along the x-axis. The y-axis is logarithmic. A spike in this graph at zero usually indicates that the volume has been masked.

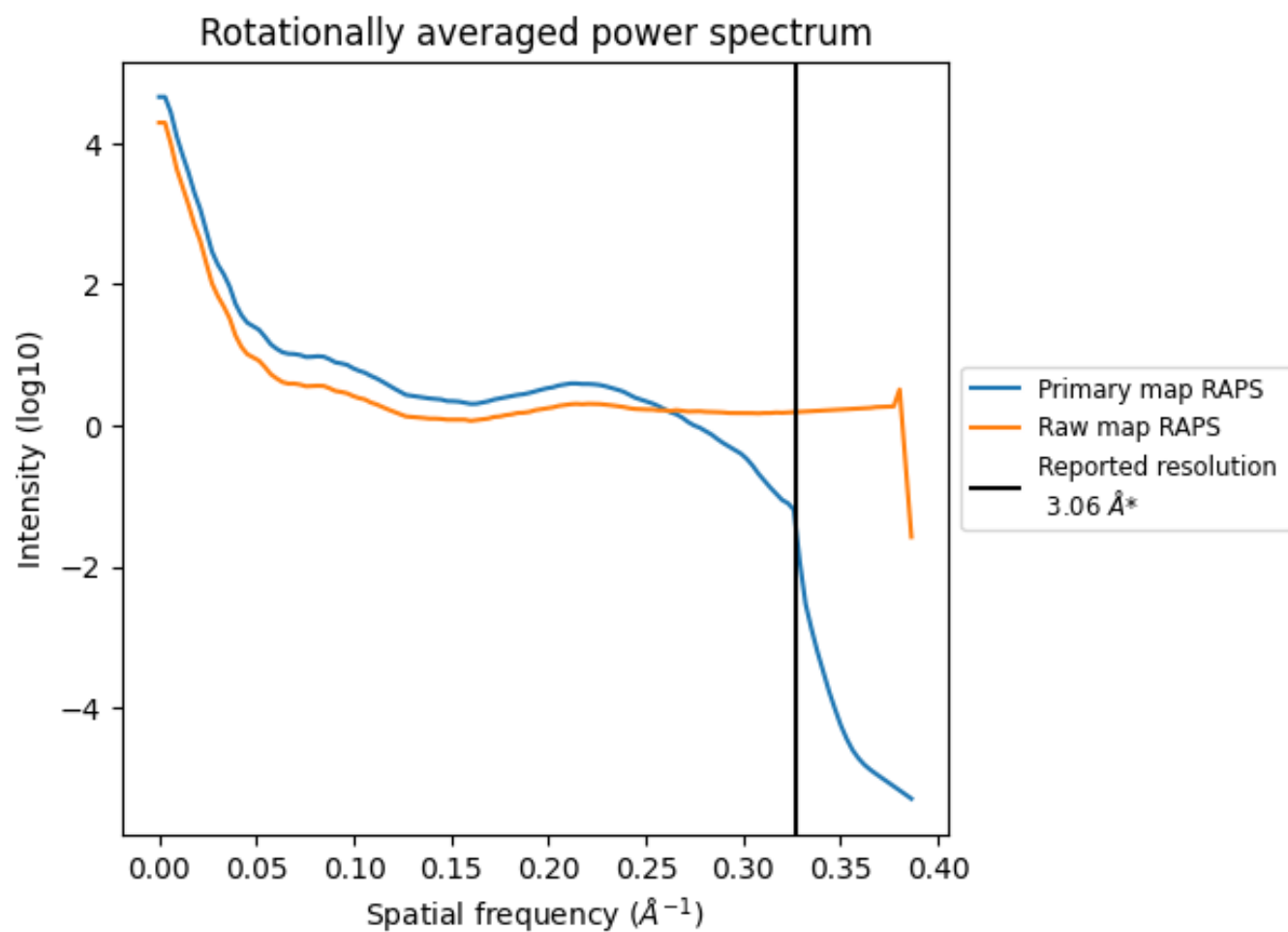
7.2 Volume estimate [i](#)



The volume at the recommended contour level is 123 nm^3 ; this corresponds to an approximate mass of 111 kDa.

The volume estimate graph shows how the enclosed volume varies with the contour level. The recommended contour level is shown as a vertical line and the intersection between the line and the curve gives the volume of the enclosed surface at the given level.

7.3 Rotationally averaged power spectrum ⓘ

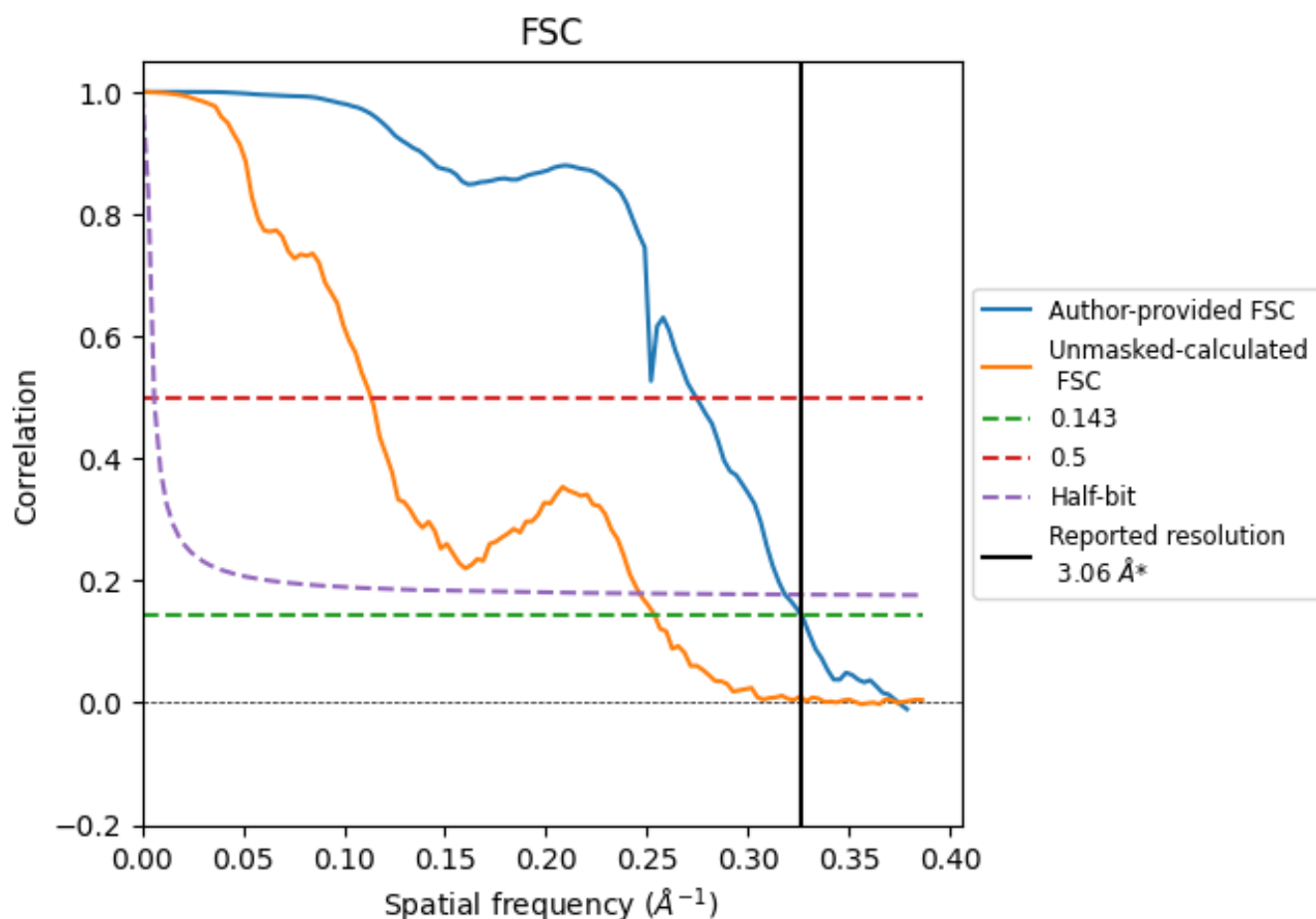


*Reported resolution corresponds to spatial frequency of 0.327 Å⁻¹

8 Fourier-Shell correlation [i](#)

Fourier-Shell Correlation (FSC) is the most commonly used method to estimate the resolution of single-particle and subtomogram-averaged maps. The shape of the curve depends on the imposed symmetry, mask and whether or not the two 3D reconstructions used were processed from a common reference. The reported resolution is shown as a black line. A curve is displayed for the half-bit criterion in addition to lines showing the 0.143 gold standard cut-off and 0.5 cut-off.

8.1 FSC [i](#)



*Reported resolution corresponds to spatial frequency of 0.327 \AA^{-1}

8.2 Resolution estimates [i](#)

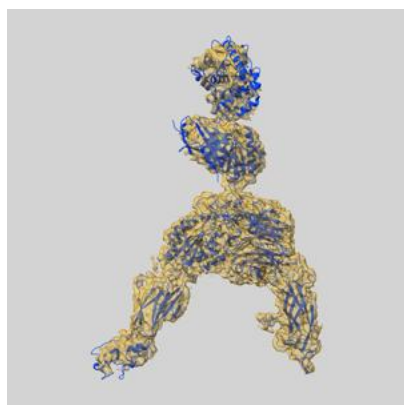
Resolution estimate (Å)	Estimation criterion (FSC cut-off)		
	0.143	0.5	Half-bit
Reported by author	3.06	-	-
Author-provided FSC curve	3.06	3.64	3.14
Unmasked-calculated*	3.94	8.83	4.06

*Resolution estimate based on FSC curve calculated by comparison of deposited half-maps. The value from deposited half-maps intersecting FSC 0.143 CUT-OFF 3.94 differs from the reported value 3.06 by more than 10 %

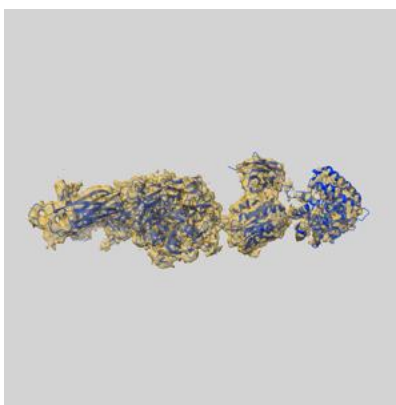
9 Map-model fit [i](#)

This section contains information regarding the fit between EMDB map EMD-55596 and PDB model 9T5V. Per-residue inclusion information can be found in section [3](#) on page [8](#).

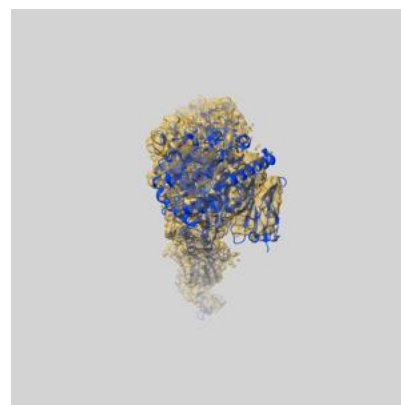
9.1 Map-model overlay [i](#)



X



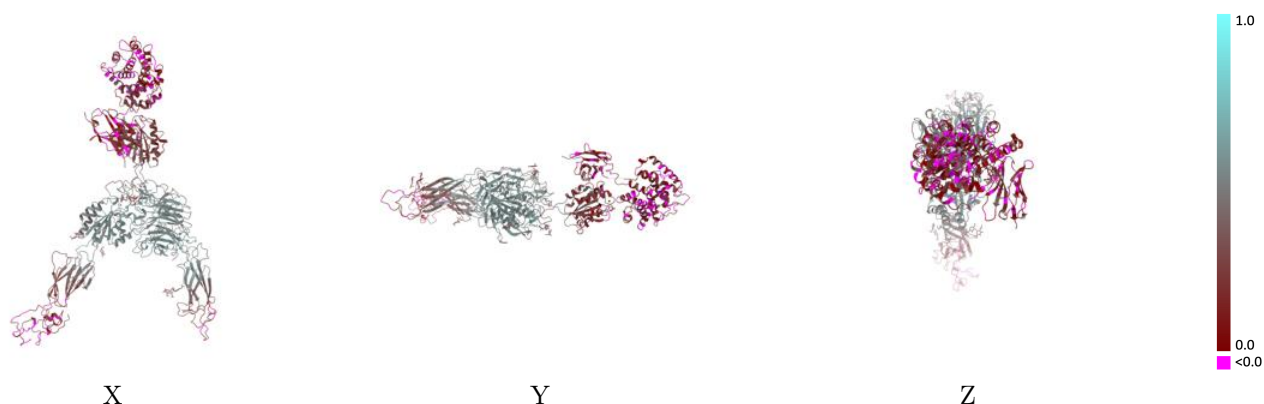
Y



Z

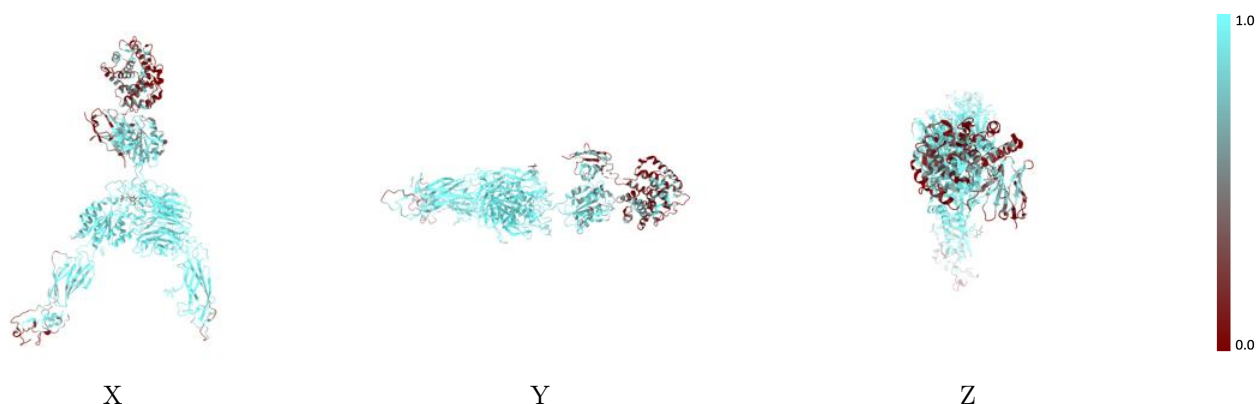
The images above show the 3D surface view of the map at the recommended contour level 0.18 at 50% transparency in yellow overlaid with a ribbon representation of the model coloured in blue. These images allow for the visual assessment of the quality of fit between the atomic model and the map.

9.2 Q-score mapped to coordinate model [i](#)



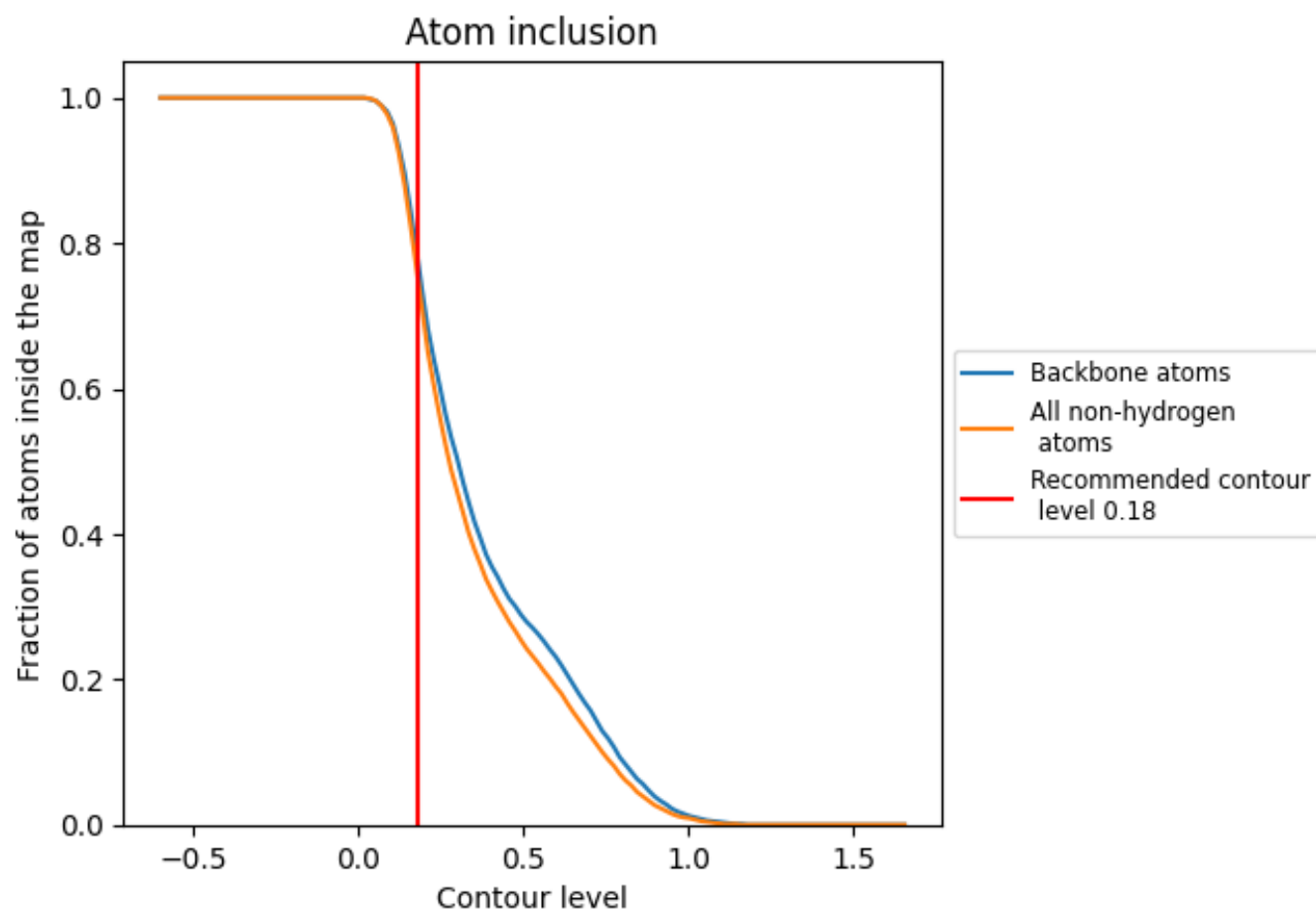
The images above show the model with each residue coloured according to its Q-score. This shows their resolvability in the map with higher Q-score values reflecting better resolvability. Please note: Q-score is calculating the resolvability of atoms, and thus high values are only expected at resolutions at which atoms can be resolved. Low Q-score values may therefore be expected for many entries.

9.3 Atom inclusion mapped to coordinate model [i](#)



The images above show the model with each residue coloured according to its atom inclusion. This shows to what extent they are inside the map at the recommended contour level (0.18).

9.4 Atom inclusion ⓘ



At the recommended contour level, 78% of all backbone atoms, 75% of all non-hydrogen atoms, are inside the map.

9.5 Map-model fit summary ⓘ

The table lists the average atom inclusion at the recommended contour level (0.18) and Q-score for the entire model and for each chain.

Chain	Atom inclusion	Q-score
All	<div></div> 0.7510	<div></div> 0.3340
A	<div></div> 0.9080	<div></div> 0.4220
B	<div></div> 0.8360	<div></div> 0.3830
C	<div></div> 0.3830	<div></div> 0.1220
D	<div></div> 0.8720	<div></div> 0.3070
E	<div></div> 0.6070	<div></div> 0.3180
F	<div></div> 0.9020	<div></div> 0.4280
G	<div></div> 0.7140	<div></div> 0.3250
H	<div></div> 0.8570	<div></div> 0.2890

1.0

0.0

<0.0