



Full wwPDB EM Validation Report ⓘ

Apr 6, 2026 – 03:01 AM UTC

PDB ID : 9T2N / pdb_00009t2n
EMDB ID : EMD-55471
Title : E. coli 70S ribosome from delta-9 strain, PTC class 4
Authors : Larsson, D.S.D.; Selmer, M.
Deposited on : 2025-10-23
Resolution : 2.06 Å(reported)
Based on initial model : 9T0Y

This is a Full wwPDB EM Validation Report for a publicly released PDB entry.

We welcome your comments at validation@mail.wwpdb.org

A user guide is available at

<https://www.wwpdb.org/validation/2017/EMValidationReportHelp>
with specific help available everywhere you see the ⓘ symbol.

The types of validation reports are described at

<http://www.wwpdb.org/validation/2017/FAQs#types>.

The following versions of software and data (see [references ⓘ](#)) were used in the production of this report:

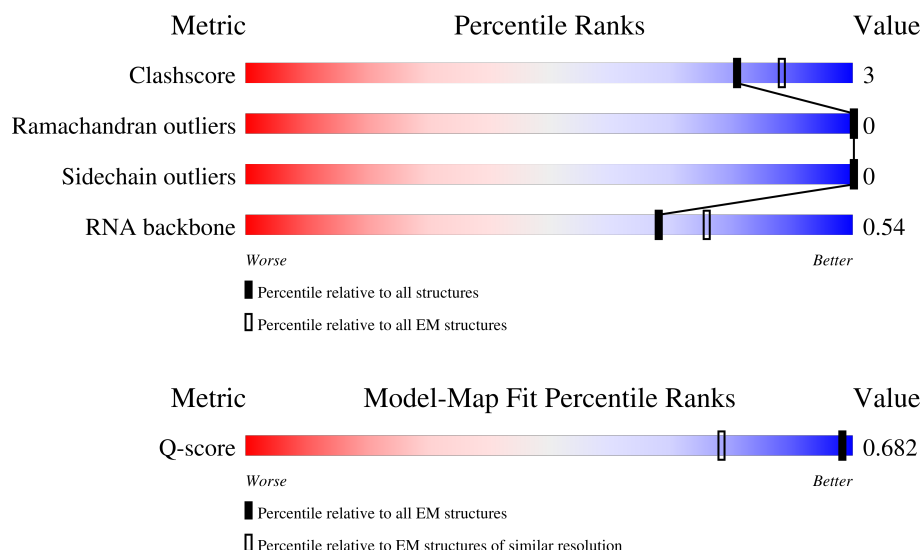
EMDB validation analysis : 0.0.1.dev132
Mogul : 2022.3.0, CSD as543be (2022)
MolProbity : 4-5-2 with Phenix2.0
Percentile statistics : 20250101.v01 (using entries in the PDB archive January 1st 2025)
EM percentile statistics : 202505.v01 (Using data in the EMDb archive up until May 2025)
MapQ : 1.9.13
Ideal geometry (proteins) : Engh & Huber (2001)
Ideal geometry (DNA, RNA) : Parkinson et al. (1996)
Validation Pipeline (wwPDB-VP) : 2.49

1 Overall quality at a glance

The following experimental techniques were used to determine the structure:
ELECTRON MICROSCOPY

The reported resolution of this entry is 2.06 Å.

Percentile scores (ranging between 0-100) for global validation metrics of the entry are shown in the following graphic. The table shows the number of entries on which the scores are based.






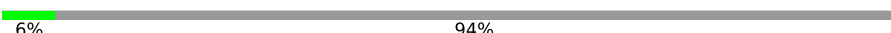







Metric	Whole archive (#Entries)	EM structures (#Entries)	Similar EM resolution (#Entries, resolution range(Å))
Clashscore	229148	23984	-
Ramachandran outliers	224038	23583	-
Sidechain outliers	223484	23102	-
RNA backbone	8273	3508	-
Q-score	-	25397	1895 (1.56 - 2.56)

The table below summarises the geometric issues observed across the polymeric chains and their fit to the map. The red, orange, yellow and green segments of the bar indicate the fraction of residues that contain outliers for ≥ 3 , 2, 1 and 0 types of geometric quality criteria respectively. A grey segment represents the fraction of residues that are not modelled. The numeric value for each fraction is indicated below the corresponding segment, with a dot representing fractions $\leq 5\%$. The upper red bar (where present) indicates the fraction of residues that have poor fit to the EM map (all-atom inclusion $< 40\%$). The numeric value is given above the bar.

Mol	Chain	Length	Quality of chain
1	Z	77	
2	a	2904	
3	b	120	

Continued on next page...

Continued from previous page...

Mol	Chain	Length	Quality of chain
4	c	273	 9% . 90%
5	d	209	 18% . 79%
6	e	201	 6% . 93%
7	i	142	 6% . 94%
8	k	144	 18% . 82%
9	l	136	 32% . 64%
10	q	103	 7% . 93%
11	r	110	 6% . 94%
12	v	85	 11% . 88%
13	z	57	 7% 7% . 86%
14	Y	76	 12% 9% . . 84%

2 Entry composition

There are 18 unique types of molecules in this entry. The entry contains 15196 atoms, of which 0 are hydrogens and 0 are deuteriums.

In the tables below, the AltConf column contains the number of residues with at least one atom in alternate conformation and the Trace column contains the number of residues modelled with at most 2 atoms.

- Molecule 1 is a RNA chain called tRNA(fMet).

Mol	Chain	Residues	Atoms					AltConf	Trace
1	Z	18	Total	C	N	O	P	0	0
			384	171	72	123	18		

- Molecule 2 is a RNA chain called 23S rRNA.

Mol	Chain	Residues	Atoms					AltConf	Trace
2	a	597	Total	C	N	O	P	0	0
			12787	5715	2334	4141	597		

- Molecule 3 is a RNA chain called 5S rRNA.

Mol	Chain	Residues	Atoms					AltConf	Trace
3	b	4	Total	C	N	O	P	0	0
			80	36	10	30	4		

- Molecule 4 is a protein called Large ribosomal subunit protein uL2.

Mol	Chain	Residues	Atoms					AltConf	Trace
4	c	26	Total	C	N	O	S	0	0
			191	116	41	33	1		

- Molecule 5 is a protein called Large ribosomal subunit protein uL3.

Mol	Chain	Residues	Atoms					AltConf	Trace
5	d	43	Total	C	N	O	S	0	0
			333	206	68	58	1		

- Molecule 6 is a protein called Large ribosomal subunit protein uL4.

Mol	Chain	Residues	Atoms				AltConf	Trace
6	e	14	Total	C	N	O	0	0
			106	68	21	17		

- Molecule 7 is a protein called Large ribosomal subunit protein uL13.

Mol	Chain	Residues	Atoms				AltConf	Trace
7	i	8	Total	C	N	O	0	0
			55	34	12	9		

- Molecule 8 is a protein called Large ribosomal subunit protein uL15.

Mol	Chain	Residues	Atoms					AltConf	Trace
8	k	26	Total	C	N	O	S	0	0
			182	106	42	33	1		

- Molecule 9 is a protein called Large ribosomal subunit protein uL16.

Mol	Chain	Residues	Atoms					AltConf	Trace
9	l	49	Total	C	N	O	S	0	0
			395	248	83	61	3		

There is a discrepancy between the modelled and reference sequences:

Chain	Residue	Modelled	Actual	Comment	Reference
1	82	MS6	MET	conflict	UNP A7ZSK2

- Molecule 10 is a protein called Large ribosomal subunit protein bL21.

Mol	Chain	Residues	Atoms				AltConf	Trace
10	q	7	Total	C	N	O	0	0
			75	48	19	8		

- Molecule 11 is a protein called Large ribosomal subunit protein uL22.

Mol	Chain	Residues	Atoms				AltConf	Trace
11	r	7	Total	C	N	O	0	0
			53	30	14	9		

- Molecule 12 is a protein called Large ribosomal subunit protein bL27.

Mol	Chain	Residues	Atoms				AltConf	Trace
12	v	10	Total	C	N	O	0	0
			74	39	17	18		

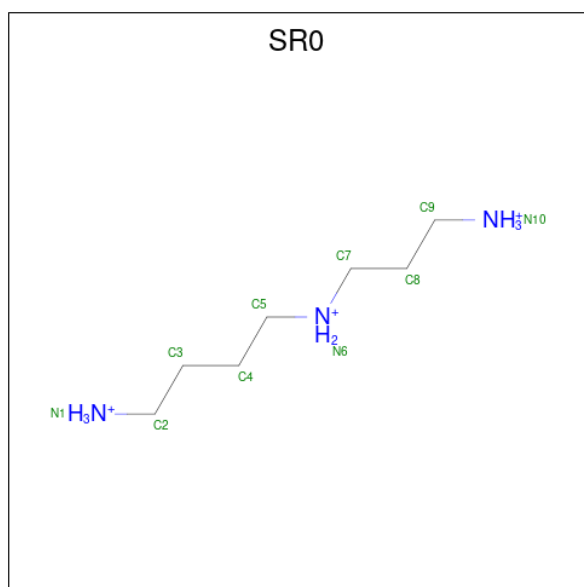
- Molecule 13 is a protein called Large ribosomal subunit protein bL32.

Mol	Chain	Residues	Atoms				AltConf	Trace
13	z	8	Total	C	N	O	0	0
			61	37	12	12		

- Molecule 14 is a RNA chain called tRNA(Phe).

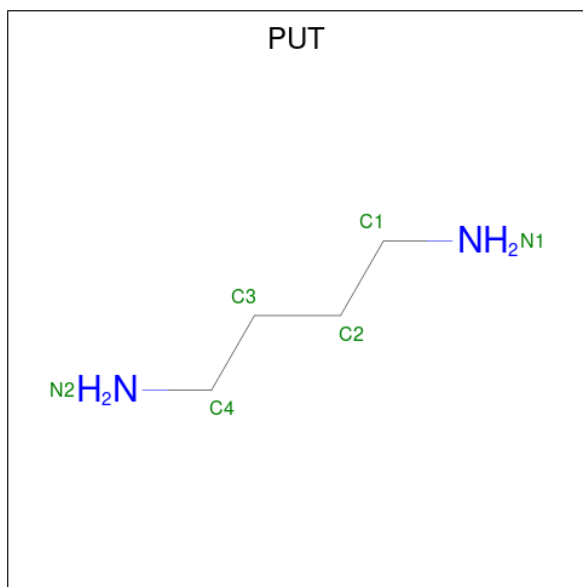
Mol	Chain	Residues	Atoms					AltConf	Trace
14	Y	12	Total	C	N	O	P	0	0
			257	114	48	83	12		

- Molecule 15 is N 1 -(3-azaniumylpropyl)butane-1,4-diaminium (CCD ID: SR0) (formula: $C_7H_{22}N_3$).



Mol	Chain	Residues	Atoms			AltConf
15	a	1	Total	C	N	0
			10	7	3	
15	a	1	Total	C	N	0
			10	7	3	

- Molecule 16 is 1,4-DIAMINOBTUTANE (CCD ID: PUT) (formula: $C_4H_{12}N_2$).



Mol	Chain	Residues	Atoms			AltConf
16	a	1	Total	C	N	0
			6	4	2	

- Molecule 17 is MAGNESIUM ION (CCD ID: MG) (formula: Mg).

Mol	Chain	Residues	Atoms		AltConf
17	a	100	Total	Mg	0
			100	100	
17	d	1	Total	Mg	0
			1	1	

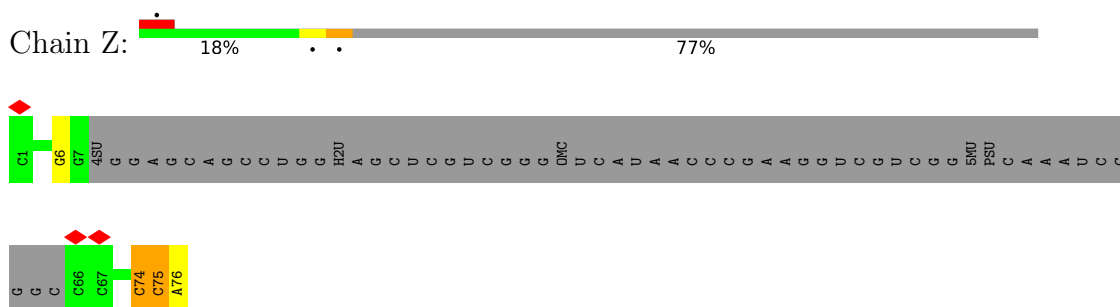
- Molecule 18 is POTASSIUM ION (CCD ID: K) (formula: K).

Mol	Chain	Residues	Atoms		AltConf
18	a	35	Total	K	0
			35	35	
18	e	1	Total	K	0
			1	1	

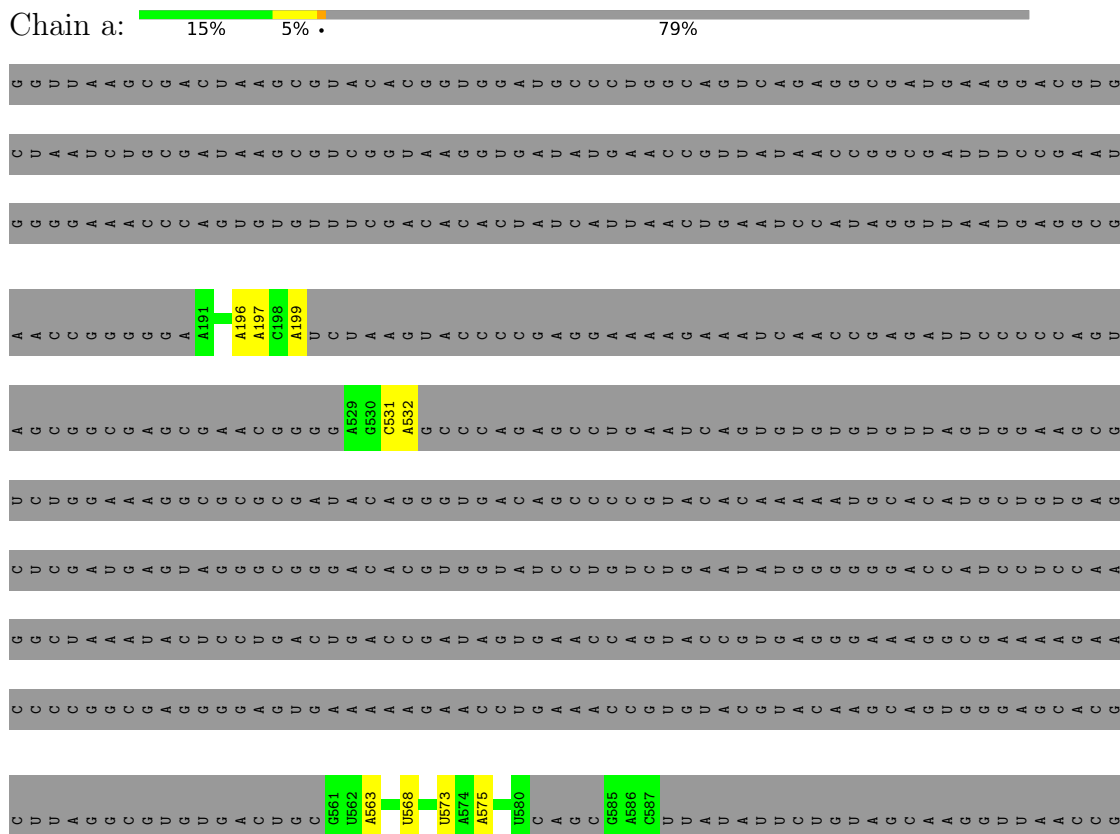
3 Residue-property plots [i](#)

These plots are drawn for all protein, RNA, DNA and oligosaccharide chains in the entry. The first graphic for a chain summarises the proportions of the various outlier classes displayed in the second graphic. The second graphic shows the sequence view annotated by issues in geometry and atom inclusion in map density. Residues are color-coded according to the number of geometric quality criteria for which they contain at least one outlier: green = 0, yellow = 1, orange = 2 and red = 3 or more. A red diamond above a residue indicates a poor fit to the EM map for this residue (all-atom inclusion < 40%). Stretches of 2 or more consecutive residues without any outlier are shown as a green connector. Residues present in the sample, but not in the model, are shown in grey.

• Molecule 1: tRNA(fMet)

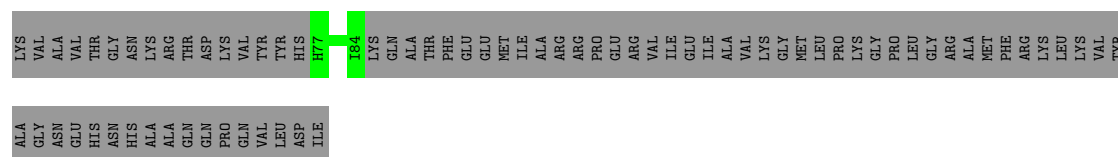


• Molecule 2: 23S rRNA



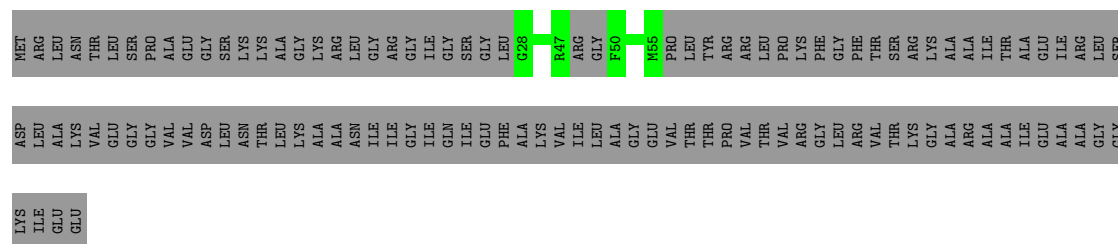


MET	LYS	THR	THR	THR	ALA	LYS	PRO	GLU	THR	VAL	VAL	LYS	ARG	ASP	TRP	TYR	VAL	VAL	ALA	ALA	ALA	THR	LYS	THR	LEU	GLY	ARG	LEU	ALA	ALA	THR	GLU	LEU	ALA	ALA	ARG	ARG	LEU	ARG	GLY	LYS	LYS	LYS	ALA	GLU	TYR	THR	PRO	PRO	HIS	HIS	VAL	ASP	THR	GLY	ASP	TYR	ILE	ILE	VAL	VAL	LEU	LEU	ASN	ALA	ASP
-----	-----	-----	-----	-----	-----	-----	-----	-----	-----	-----	-----	-----	-----	-----	-----	-----	-----	-----	-----	-----	-----	-----	-----	-----	-----	-----	-----	-----	-----	-----	-----	-----	-----	-----	-----	-----	-----	-----	-----	-----	-----	-----	-----	-----	-----	-----	-----	-----	-----	-----	-----	-----	-----	-----	-----	-----	-----	-----	-----	-----	-----	-----	-----	-----	-----	-----



• Molecule 8: Large ribosomal subunit protein uL15

Chain k: 18% 82%



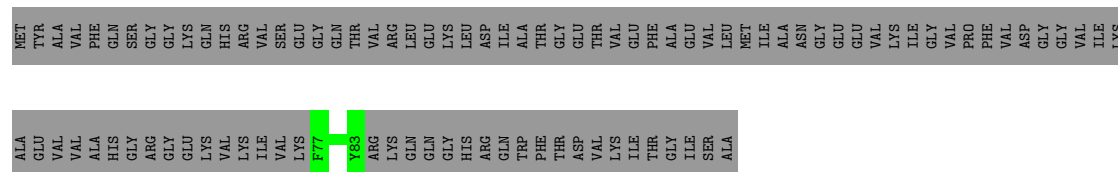
• Molecule 9: Large ribosomal subunit protein uL16

Chain l: 32% 64%



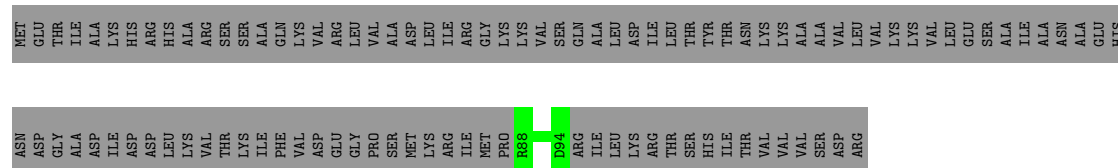
• Molecule 10: Large ribosomal subunit protein bL21

Chain q: 7% 93%



• Molecule 11: Large ribosomal subunit protein uL22

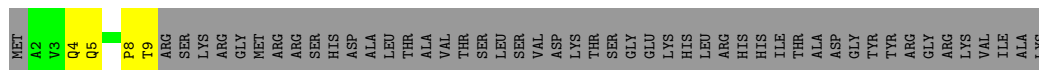
Chain r: 6% 94%



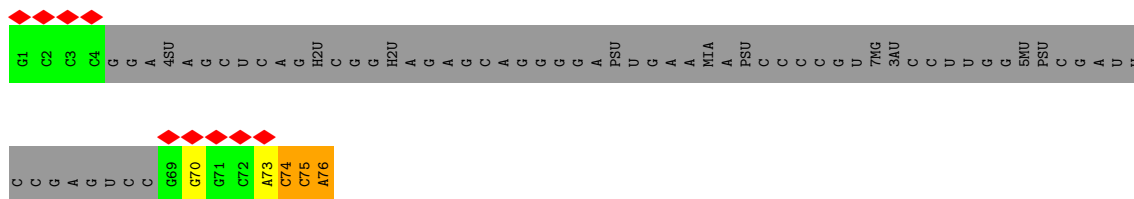
• Molecule 12: Large ribosomal subunit protein bL27

Chain v: 11% 88%

- Molecule 13: Large ribosomal subunit protein bL32



- Molecule 14: tRNA(Phe)



4 Experimental information

Property	Value	Source
EM reconstruction method	SINGLE PARTICLE	Depositor
Imposed symmetry	POINT, Not provided	
Number of particles used	88625	Depositor
Resolution determination method	FSC 0.143 CUT-OFF	Depositor
CTF correction method	PHASE FLIPPING AND AMPLITUDE CORRECTION	Depositor
Microscope	TFS KRIOS	Depositor
Voltage (kV)	300	Depositor
Electron dose ($e^-/\text{\AA}^2$)	30.0	Depositor
Minimum defocus (nm)	800	Depositor
Maximum defocus (nm)	1500	Depositor
Magnification	Not provided	
Image detector	GATAN K2 SUMMIT (4k x 4k)	Depositor
Maximum map value	3.484	Depositor
Minimum map value	-0.811	Depositor
Average map value	0.004	Depositor
Map value standard deviation	0.108	Depositor
Recommended contour level	0.4	Depositor
Map size (\AA)	420.608, 420.608, 420.608	wwPDB
Map dimensions	512, 512, 512	wwPDB
Map angles ($^\circ$)	90.0, 90.0, 90.0	wwPDB
Pixel spacing (\AA)	0.8215, 0.8215, 0.8215	Depositor

5 Model quality

5.1 Standard geometry

Bond lengths and bond angles in the following residue types are not validated in this section: PSU, PUT, MS6, K, H2U, MEQ, 1MG, 6MZ, 4D4, 5MC, 5MU, OMU, MG, SR0

The Z score for a bond length (or angle) is the number of standard deviations the observed value is removed from the expected value. A bond length (or angle) with $|Z| > 5$ is considered an outlier worth inspection. RMSZ is the root-mean-square of all Z scores of the bond lengths (or angles).

Mol	Chain	Bond lengths		Bond angles	
		RMSZ	# $ Z > 5$	RMSZ	# $ Z > 5$
1	Z	0.58	0/427	0.85	0/661
2	a	0.52	1/14070 (0.0%)	1.00	33/21854 (0.2%)
3	b	0.57	0/87	0.99	0/132
4	c	0.71	0/197	0.94	0/265
5	d	0.67	0/329	1.02	0/438
6	e	0.85	0/107	1.10	1/139 (0.7%)
7	i	0.60	0/56	1.13	0/74
8	k	0.67	0/182	1.11	0/232
9	l	0.62	0/379	1.07	0/498
10	q	0.70	0/77	1.02	0/99
11	r	0.67	0/52	0.91	0/66
12	v	0.65	0/73	1.04	0/95
13	z	0.71	0/61	1.09	1/82 (1.2%)
14	Y	0.63	0/285	0.88	0/438
All	All	0.54	1/16382 (0.0%)	1.00	35/25073 (0.1%)

Chiral center outliers are detected by calculating the chiral volume of a chiral center and verifying if the center is modelled as a planar moiety or with the opposite hand. A planarity outlier is detected by checking planarity of atoms in a peptide group, atoms in a mainchain group or atoms of a sidechain that are expected to be planar.

Mol	Chain	#Chirality outliers	#Planarity outliers
6	e	0	1
9	l	0	2
12	v	0	1
All	All	0	4

All (1) bond length outliers are listed below:

Mol	Chain	Res	Type	Atoms	Z	Observed(Å)	Ideal(Å)
2	a	2552	OMU	O3'-P	5.77	1.62	1.56

All (35) bond angle outliers are listed below:

Mol	Chain	Res	Type	Atoms	Z	Observed(°)	Ideal(°)
2	a	980	A	O3'-P-O5'	-15.19	81.22	104.00
2	a	980	A	C4'-C3'-O3'	11.09	129.64	113.00
2	a	1971	U	O3'-P-O5'	-10.08	88.89	104.00
2	a	1974	C	O3'-P-O5'	-8.86	90.70	104.00
2	a	811	U	C2'-C3'-O3'	7.49	120.73	109.50
2	a	781	A	O3'-P-O5'	-7.21	93.19	104.00
6	e	75	SER	O-C-N	-7.05	113.54	121.43
2	a	2048	G	O3'-P-O5'	-6.77	93.85	104.00
2	a	1959	G	O3'-P-O5'	-6.70	93.95	104.00
2	a	2429	G	O3'-P-O5'	-6.63	94.06	104.00
2	a	2051	A	O3'-P-O5'	-6.51	94.23	104.00
2	a	2278	A	O3'-P-O5'	-6.46	94.31	104.00
2	a	2019	A	O3'-P-O5'	-6.24	94.64	104.00
2	a	2050	C	O3'-P-O5'	-6.19	94.72	104.00
2	a	674	G	O3'-P-O5'	-6.16	94.76	104.00
2	a	1969	A	O3'-P-O5'	-6.15	94.78	104.00
2	a	972	A	O3'-P-O5'	-5.91	95.13	104.00
13	z	5	GLN	CB-CA-C	-5.84	99.49	109.65
2	a	980	A	C2'-C3'-O3'	-5.81	104.99	113.70
2	a	676	A	O3'-P-O5'	-5.78	95.33	104.00
2	a	1902	C	O3'-P-O5'	-5.70	95.46	104.00
2	a	2022	U	O3'-P-O5'	-5.66	95.51	104.00
2	a	1936	A	O4'-C1'-C2'	-5.64	100.16	105.80
2	a	980	A	P-O3'-C3'	5.56	128.54	120.20
2	a	2060	A	C2'-C3'-O3'	5.54	117.81	109.50
2	a	1785	A	O3'-P-O5'	-5.51	95.73	104.00
2	a	1971	U	C2'-C3'-O3'	-5.51	105.43	113.70
2	a	2279	G	O3'-P-O5'	-5.44	95.84	104.00
2	a	982	C	C2'-C3'-O3'	-5.37	105.64	113.70
2	a	1929	G	O3'-P-O5'	-5.25	96.12	104.00
2	a	757	G	C4'-C3'-C2'	-5.07	97.53	102.60
2	a	748	G	C1'-O4'-C4'	-5.07	104.83	109.90
2	a	2241	A	C4'-C3'-C2'	-5.04	97.56	102.60
2	a	197	A	O3'-P-O5'	5.02	111.54	104.00
2	a	827	U	C2'-C3'-O3'	-5.01	106.18	113.70

There are no chirality outliers.

All (4) planarity outliers are listed below:

Mol	Chain	Res	Type	Group
6	e	69	ARG	Sidechain

Continued on next page...

Continued from previous page...

Mol	Chain	Res	Type	Group
9	l	16	ARG	Sidechain
9	l	44	ARG	Sidechain
12	v	14	ARG	Sidechain

5.2 Too-close contacts [i](#)

In the following table, the Non-H and H(model) columns list the number of non-hydrogen atoms and hydrogen atoms in the chain respectively. The H(added) column lists the number of hydrogen atoms added and optimized by MolProbity. The Clashes column lists the number of clashes within the asymmetric unit, whereas Symm-Clashes lists symmetry-related clashes.

Mol	Chain	Non-H	H(model)	H(added)	Clashes	Symm-Clashes
1	Z	384	0	200	2	0
2	a	12787	0	6475	45	0
3	b	80	0	43	0	0
4	c	191	0	177	1	0
5	d	333	0	336	4	0
6	e	106	0	115	0	0
7	i	55	0	51	0	0
8	k	182	0	179	0	0
9	l	395	0	412	1	0
10	q	75	0	76	0	0
11	r	53	0	55	0	0
12	v	74	0	64	0	0
13	z	61	0	62	4	0
14	Y	257	0	134	8	0
15	a	20	0	0	0	0
16	a	6	0	12	0	0
17	a	100	0	0	0	0
17	d	1	0	0	0	0
18	a	35	0	0	0	0
18	e	1	0	0	0	0
All	All	15196	0	8391	59	0

The all-atom clashscore is defined as the number of clashes found per 1000 atoms (including hydrogen atoms). The all-atom clashscore for this structure is 3.

All (59) close contacts within the same asymmetric unit are listed below, sorted by their clash magnitude.

Atom-1	Atom-2	Interatomic distance (Å)	Clash overlap (Å)
4:c:232:HIS:HA	4:c:242:LYS:HD2	1.74	0.69
2:a:2503:A:H61	2:a:2576:G:H2'	1.63	0.63
2:a:1939:5MU:OP1	2:a:2604:U:O2'	2.16	0.62
2:a:568:U:H1'	2:a:2030:6MZ:H9C1	1.82	0.61
2:a:2059:A:H3'	2:a:2060:A:H5''	1.83	0.61
2:a:2273:A:H2'	2:a:2274:A:C8	2.37	0.60
2:a:2547:A:H2'	2:a:2548:U:C6	2.39	0.57
9:l:17:ASN:O	9:l:38:ARG:HD3	2.05	0.57
2:a:2447:G:H22	2:a:2450:A:H62	1.51	0.56
2:a:2032:G:C8	5:d:150:MEQ:HE3	2.40	0.56
14:Y:74:C:H2'	14:Y:75:C:C2	2.41	0.55
14:Y:73:A:H2'	14:Y:74:C:C6	2.42	0.54
2:a:2507:C:H4'	14:Y:76:A:H5'	1.91	0.53
14:Y:75:C:H3'	14:Y:76:A:C4	2.44	0.53
2:a:2060:A:O4'	2:a:2061:G:H5'	2.10	0.52
1:Z:74:C:H2'	1:Z:75:C:C6	2.45	0.51
2:a:2020:A:H5'	13:z:9:THR:CG2	2.41	0.51
2:a:2567:G:H2'	2:a:2568:U:C6	2.46	0.51
2:a:1028:A:H2'	2:a:1029:A:C8	2.47	0.50
2:a:2060:A:C4'	2:a:2061:G:H5'	2.41	0.50
2:a:2243:U:H2'	2:a:2244:U:C6	2.47	0.50
2:a:2461:A:H1'	2:a:2492:U:C2	2.47	0.50
2:a:2488:G:O2'	2:a:2489:U:H5'	2.12	0.49
2:a:1028:A:N6	2:a:1125:G:H2'	2.28	0.49
2:a:2504:U:H3'	2:a:2505:G:C5	2.48	0.48
2:a:2557:G:H2'	2:a:2558:C:C6	2.48	0.48
2:a:2060:A:H2	2:a:2062:A:N7	2.10	0.48
2:a:1980:G:O2'	2:a:1982:U:OP2	2.32	0.48
2:a:2450:A:H2'	2:a:2451:A:C8	2.48	0.48
2:a:2591:C:H2'	2:a:2592:G:C8	2.49	0.47
2:a:2503:A:N6	2:a:2577:A:OP2	2.48	0.47
2:a:2062:A:H61	2:a:2500:U:H3	1.64	0.46
2:a:2461:A:H2'	2:a:2462:C:C6	2.50	0.46
5:d:121:THR:HB	5:d:127:PHE:CD2	2.51	0.45
2:a:2615:U:C2	13:z:4:GLN:HA	2.51	0.45
2:a:1840:G:C6	2:a:1841:U:C4	3.04	0.45
5:d:149:ASN:OD1	5:d:150:MEQ:N	2.49	0.45
14:Y:74:C:H2'	14:Y:75:C:N3	2.32	0.45
14:Y:75:C:H5'	14:Y:76:A:H2'	2.00	0.44
2:a:2063:C:H2'	2:a:2064:C:C6	2.53	0.44
2:a:2238:G:N3	2:a:2238:G:H2'	2.34	0.43
1:Z:75:C:C5	1:Z:76:A:H2'	2.53	0.43

Continued on next page...

Continued from previous page...

Atom-1	Atom-2	Interatomic distance (Å)	Clash overlap (Å)
2:a:2449:H2U:H61	2:a:2449:H2U:H2'	1.65	0.43
2:a:2506:U:C4	2:a:2584:U:H4'	2.54	0.43
14:Y:75:C:H5''	14:Y:75:C:H6	1.84	0.42
2:a:2430:A:N3	2:a:2430:A:H2'	2.34	0.42
2:a:2451:A:H8	2:a:2451:A:OP2	2.01	0.42
2:a:2020:A:H5'	13:z:9:THR:HG21	2.01	0.41
2:a:2016:U:H2'	2:a:2017:U:C6	2.56	0.41
2:a:948:C:H1'	2:a:984:A:C8	2.56	0.41
2:a:1778:U:H2'	2:a:1784:A:N6	2.35	0.41
2:a:2038:G:H2'	2:a:2039:U:O4'	2.19	0.41
2:a:1672:A:C2	2:a:2582:G:H5'	2.56	0.41
2:a:984:A:H2'	2:a:984:A:N3	2.36	0.41
5:d:152:PRO:HG3	5:d:156:PHE:CZ	2.55	0.41
2:a:1263:U:O2'	13:z:8:PRO:HD2	2.21	0.41
14:Y:75:C:H5''	14:Y:75:C:C6	2.56	0.40
2:a:2071:A:H2'	2:a:2072:C:C6	2.56	0.40
2:a:2504:U:O4	2:a:2609:U:H3'	2.22	0.40

There are no symmetry-related clashes.

5.3 Torsion angles

5.3.1 Protein backbone

In the following table, the Percentiles column shows the percent Ramachandran outliers of the chain as a percentile score with respect to all PDB entries followed by that with respect to all EM entries.

The Analysed column shows the number of residues for which the backbone conformation was analysed, and the total number of residues.

Mol	Chain	Analysed	Favoured	Allowed	Outliers	Percentiles	
4	c	24/273 (9%)	23 (96%)	1 (4%)	0	100	100
5	d	40/209 (19%)	36 (90%)	4 (10%)	0	100	100
6	e	10/201 (5%)	10 (100%)	0	0	100	100
7	i	6/142 (4%)	6 (100%)	0	0	100	100
8	k	22/144 (15%)	20 (91%)	2 (9%)	0	100	100
9	l	41/136 (30%)	41 (100%)	0	0	100	100
10	q	5/103 (5%)	5 (100%)	0	0	100	100

Continued on next page...

Continued from previous page...

Mol	Chain	Analysed	Favoured	Allowed	Outliers	Percentiles	
11	r	5/110 (4%)	5 (100%)	0	0	100	100
12	v	8/85 (9%)	7 (88%)	1 (12%)	0	100	100
13	z	6/57 (10%)	6 (100%)	0	0	100	100
All	All	167/1460 (11%)	159 (95%)	8 (5%)	0	100	100

There are no Ramachandran outliers to report.

5.3.2 Protein sidechains ⓘ

In the following table, the Percentiles column shows the percent sidechain outliers of the chain as a percentile score with respect to all PDB entries followed by that with respect to all EM entries.

The Analysed column shows the number of residues for which the sidechain conformation was analysed, and the total number of residues.

Mol	Chain	Analysed	Rotameric	Outliers	Percentiles	
4	c	19/218 (9%)	19 (100%)	0	100	100
5	d	34/163 (21%)	34 (100%)	0	100	100
6	e	11/165 (7%)	11 (100%)	0	100	100
7	i	5/116 (4%)	5 (100%)	0	100	100
8	k	16/103 (16%)	16 (100%)	0	100	100
9	l	37/107 (35%)	37 (100%)	0	100	100
10	q	7/84 (8%)	7 (100%)	0	100	100
11	r	4/93 (4%)	4 (100%)	0	100	100
12	v	8/63 (13%)	8 (100%)	0	100	100
13	z	7/48 (15%)	7 (100%)	0	100	100
All	All	148/1160 (13%)	148 (100%)	0	100	100

There are no protein residues with a non-rotameric sidechain to report.

Sometimes sidechains can be flipped to improve hydrogen bonding and reduce clashes. All (2) such sidechains are listed below:

Mol	Chain	Res	Type
8	k	54	GLN
13	z	6	ASN

5.3.3 RNA ⓘ

Mol	Chain	Analysed	Backbone Outliers	Pucker Outliers
1	Z	16/77 (20%)	2 (12%)	1 (6%)
14	Y	10/76 (13%)	4 (40%)	0
2	a	562/2904 (19%)	82 (14%)	0
3	b	3/120 (2%)	2 (66%)	0
All	All	591/3177 (18%)	90 (15%)	1 (0%)

All (90) RNA backbone outliers are listed below:

Mol	Chain	Res	Type
1	Z	6	G
1	Z	75	C
2	a	196	A
2	a	199	A
2	a	531	C
2	a	532	A
2	a	563	A
2	a	573	U
2	a	575	A
2	a	747	5MU
2	a	776	G
2	a	782	A
2	a	784	G
2	a	785	G
2	a	792	A
2	a	805	G
2	a	827	U
2	a	828	U
2	a	946	C
2	a	961	C
2	a	974	G
2	a	981	A
2	a	983	A
2	a	984	A
2	a	985	C
2	a	1026	G
2	a	1132	U
2	a	1133	A
2	a	1135	C
2	a	1253	A
2	a	1256	G
2	a	1674	G

Continued on next page...

Continued from previous page...

Mol	Chain	Res	Type
2	a	1773	A
2	a	1782	U
2	a	1929	G
2	a	1930	G
2	a	1937	A
2	a	1938	A
2	a	1955	U
2	a	1967	C
2	a	1970	A
2	a	1971	U
2	a	1972	G
2	a	1993	U
2	a	2023	C
2	a	2031	A
2	a	2033	A
2	a	2055	C
2	a	2056	G
2	a	2060	A
2	a	2061	G
2	a	2069	G
2	a	2077	A
2	a	2239	G
2	a	2251	G
2	a	2282	G
2	a	2425	A
2	a	2429	G
2	a	2430	A
2	a	2431	U
2	a	2435	A
2	a	2441	U
2	a	2447	G
2	a	2448	A
2	a	2449	H2U
2	a	2451	A
2	a	2453	A
2	a	2459	A
2	a	2491	U
2	a	2500	U
2	a	2502	G
2	a	2503	A
2	a	2504	U
2	a	2506	U

Continued on next page...

Continued from previous page...

Mol	Chain	Res	Type
2	a	2507	C
2	a	2518	A
2	a	2547	A
2	a	2566	A
2	a	2567	G
2	a	2573	C
2	a	2586	U
2	a	2602	A
2	a	2609	U
2	a	2613	U
3	b	88	C
3	b	89	U
14	Y	70	G
14	Y	74	C
14	Y	75	C
14	Y	76	A

All (1) RNA pucker outliers are listed below:

Mol	Chain	Res	Type
1	Z	74	C

5.4 Non-standard residues in protein, DNA, RNA chains ⓘ

12 non-standard protein/DNA/RNA residues are modelled in this entry.

In the following table, the Counts columns list the number of bonds (or angles) for which Mogul statistics could be retrieved, the number of bonds (or angles) that are observed in the model and the number of bonds (or angles) that are defined in the Chemical Component Dictionary. The Link column lists molecule types, if any, to which the group is linked. The Z score for a bond length (or angle) is the number of standard deviations the observed value is removed from the expected value. A bond length (or angle) with $|Z| > 2$ is considered an outlier worth inspection. RMSZ is the root-mean-square of all Z scores of the bond lengths (or angles).

Mol	Type	Chain	Res	Link	Bond lengths			Bond angles		
					Counts	RMSZ	$\# Z > 2$	Counts	RMSZ	$\# Z > 2$
9	MS6	l	82	9	5,7,8	0.21	0	2,7,9	0.09	0
2	PSU	a	746	17,2	18,21,22	0.24	0	21,30,33	0.45	0
9	4D4	l	81	9	9,11,12	0.94	0	7,13,15	1.13	1 (14%)
5	MEQ	d	150	5	8,9,10	0.52	0	5,10,12	0.78	0
2	5MU	a	747	2	19,22,23	0.29	0	27,32,35	0.57	0
2	5MU	a	1939	2,18	19,22,23	0.44	0	27,32,35	0.48	0

Mol	Type	Chain	Res	Link	Bond lengths			Bond angles		
					Counts	RMSZ	# Z > 2	Counts	RMSZ	# Z > 2
2	OMU	a	2552	17,2	19,22,23	0.39	0	25,31,34	0.26	0
2	6MZ	a	2030	2	22,25,26	0.31	0	29,36,39	0.45	0
2	5MC	a	1962	2,18	19,22,23	0.36	0	26,32,35	0.43	0
2	1MG	a	745	2	23,26,27	0.43	0	33,39,42	0.76	1 (3%)
2	H2U	a	2449	2	18,21,22	0.38	0	19,30,33	0.56	0
2	PSU	a	955	2	18,21,22	0.55	0	21,30,33	0.45	0

In the following table, the Chirals column lists the number of chiral outliers, the number of chiral centers analysed, the number of these observed in the model and the number defined in the Chemical Component Dictionary. Similar counts are reported in the Torsion and Rings columns. '-' means no outliers of that kind were identified.

Mol	Type	Chain	Res	Link	Chirals	Torsions	Rings
9	MS6	l	82	9	-	1/4/6/8	-
2	PSU	a	746	17,2	-	2/7/25/26	0/2/2/2
9	4D4	l	81	9	-	0/11/12/14	-
5	MEQ	d	150	5	-	4/8/9/11	-
2	5MU	a	747	2	-	0/7/25/26	0/2/2/2
2	5MU	a	1939	2,18	-	0/7/25/26	0/2/2/2
2	OMU	a	2552	17,2	-	0/9/27/28	0/2/2/2
2	6MZ	a	2030	2	-	1/9/27/28	0/3/3/3
2	5MC	a	1962	2,18	-	2/7/25/26	0/2/2/2
2	1MG	a	745	2	-	0/7/25/26	0/3/3/3
2	H2U	a	2449	2	-	6/7/38/39	0/2/2/2
2	PSU	a	955	2	-	0/7/25/26	0/2/2/2

There are no bond length outliers.

All (2) bond angle outliers are listed below:

Mol	Chain	Res	Type	Atoms	Z	Observed(°)	Ideal(°)
2	a	745	1MG	C6-C5-C4	-3.13	116.43	119.97
9	l	81	4D4	O-C-CA	-2.32	118.80	124.77

There are no chirality outliers.

All (16) torsion outliers are listed below:

Mol	Chain	Res	Type	Atoms
5	d	150	MEQ	C-CA-CB-CG
2	a	746	PSU	C2'-C1'-C5-C6
2	a	746	PSU	O4'-C1'-C5-C6

Continued on next page...

Continued from previous page...

Mol	Chain	Res	Type	Atoms
2	a	2449	H2U	O4'-C1'-N1-C6
2	a	2449	H2U	C2'-C1'-N1-C6
2	a	2449	H2U	C2'-C1'-N1-C2
2	a	2449	H2U	O4'-C4'-C5'-O5'
2	a	2449	H2U	C3'-C4'-C5'-O5'
5	d	150	MEQ	OE1-CD-CG-CB
5	d	150	MEQ	NE2-CD-CG-CB
9	l	82	MS6	CB-CG-SD-CE
5	d	150	MEQ	N-CA-CB-CG
2	a	1962	5MC	C2'-C1'-N1-C6
2	a	1962	5MC	O4'-C1'-N1-C6
2	a	2030	6MZ	O4'-C4'-C5'-O5'
2	a	2449	H2U	O4'-C1'-N1-C2

There are no ring outliers.

4 monomers are involved in 5 short contacts:

Mol	Chain	Res	Type	Clashes	Symm-Clashes
5	d	150	MEQ	2	0
2	a	1939	5MU	1	0
2	a	2030	6MZ	1	0
2	a	2449	H2U	1	0

5.5 Carbohydrates [i](#)

There are no oligosaccharides in this entry.

5.6 Ligand geometry [i](#)

Of 140 ligands modelled in this entry, 137 are monoatomic - leaving 3 for Mogul analysis.

In the following table, the Counts columns list the number of bonds (or angles) for which Mogul statistics could be retrieved, the number of bonds (or angles) that are observed in the model and the number of bonds (or angles) that are defined in the Chemical Component Dictionary. The Link column lists molecule types, if any, to which the group is linked. The Z score for a bond length (or angle) is the number of standard deviations the observed value is removed from the expected value. A bond length (or angle) with $|Z| > 2$ is considered an outlier worth inspection. RMSZ is the root-mean-square of all Z scores of the bond lengths (or angles).

Mol	Type	Chain	Res	Link	Bond lengths			Bond angles		
					Counts	RMSZ	$\# Z > 2$	Counts	RMSZ	$\# Z > 2$
15	SR0	a	3002	-	9,9,9	0.55	0	8,8,8	0.58	0

Mol	Type	Chain	Res	Link	Bond lengths			Bond angles		
					Counts	RMSZ	# Z > 2	Counts	RMSZ	# Z > 2
16	PUT	a	3003	-	5,5,5	0.28	0	4,4,4	0.22	0
15	SR0	a	3001	-	9,9,9	0.53	0	8,8,8	0.23	0

In the following table, the Chirals column lists the number of chiral outliers, the number of chiral centers analysed, the number of these observed in the model and the number defined in the Chemical Component Dictionary. Similar counts are reported in the Torsion and Rings columns. '-' means no outliers of that kind were identified.

Mol	Type	Chain	Res	Link	Chirals	Torsions	Rings
15	SR0	a	3002	-	-	3/7/7/7	-
16	PUT	a	3003	-	-	0/3/3/3	-
15	SR0	a	3001	-	-	3/7/7/7	-

There are no bond length outliers.

There are no bond angle outliers.

There are no chirality outliers.

All (6) torsion outliers are listed below:

Mol	Chain	Res	Type	Atoms
15	a	3002	SR0	N6-C7-C8-C9
15	a	3002	SR0	C8-C7-N6-C5
15	a	3002	SR0	C2-C3-C4-C5
15	a	3001	SR0	N1-C2-C3-C4
15	a	3001	SR0	C7-C8-C9-N10
15	a	3001	SR0	C2-C3-C4-C5

There are no ring outliers.

No monomer is involved in short contacts.

5.7 Other polymers [i](#)

There are no such residues in this entry.

5.8 Polymer linkage issues [i](#)

There are no chain breaks in this entry.

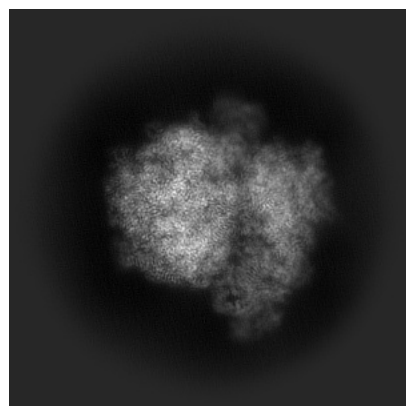
6 Map visualisation [i](#)

This section contains visualisations of the EMDB entry EMD-55471. These allow visual inspection of the internal detail of the map and identification of artifacts.

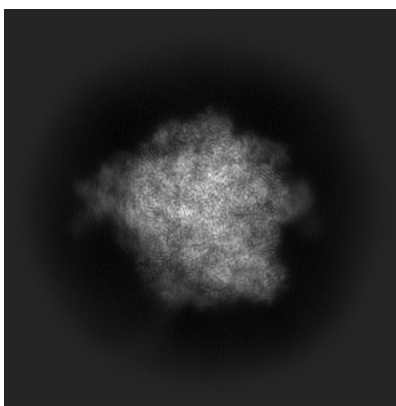
Images derived from a raw map, generated by summing the deposited half-maps, are presented below the corresponding image components of the primary map to allow further visual inspection and comparison with those of the primary map.

6.1 Orthogonal projections [i](#)

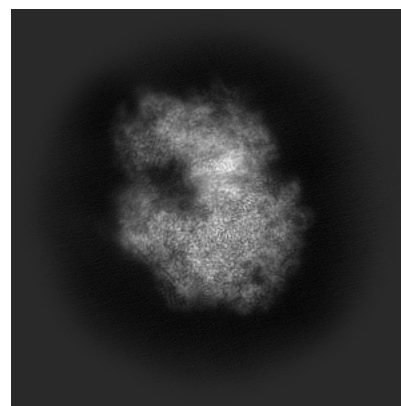
6.1.1 Primary map



X

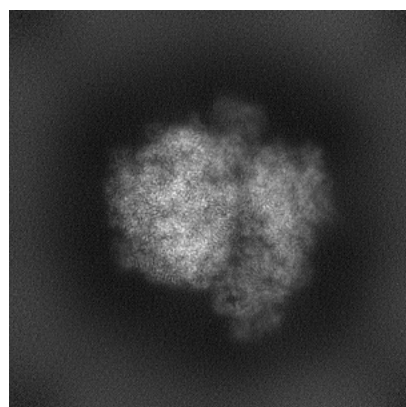


Y

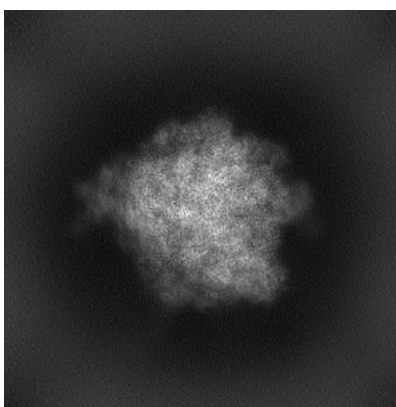


Z

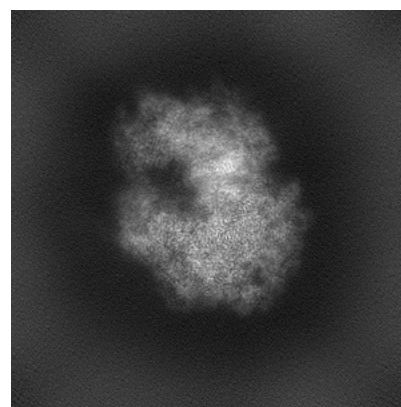
6.1.2 Raw map



X



Y

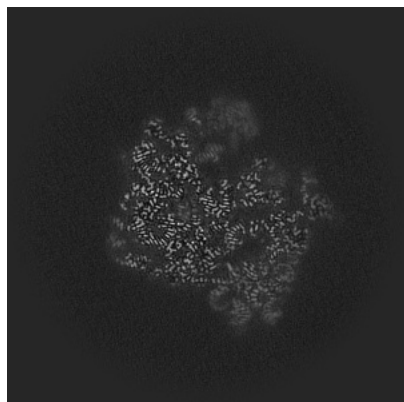


Z

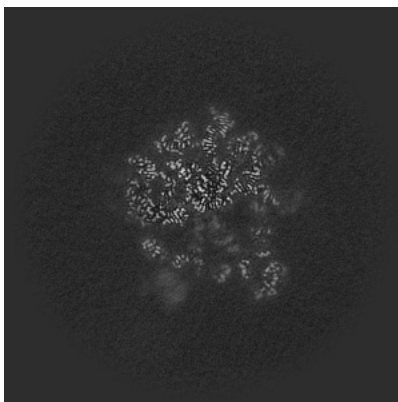
The images above show the map projected in three orthogonal directions.

6.2 Central slices [i](#)

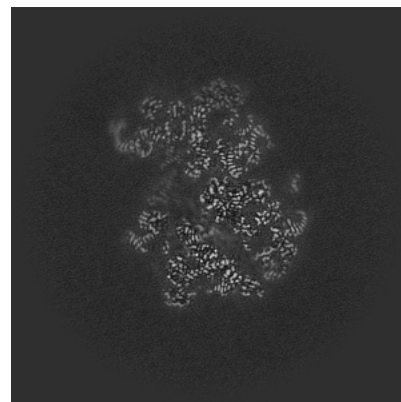
6.2.1 Primary map



X Index: 256

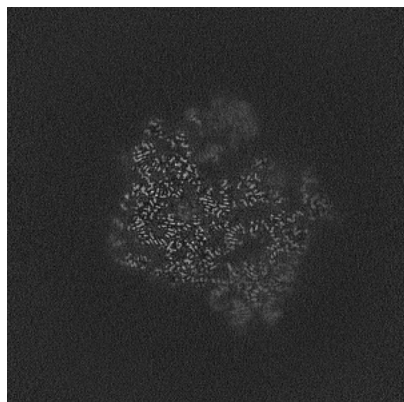


Y Index: 256

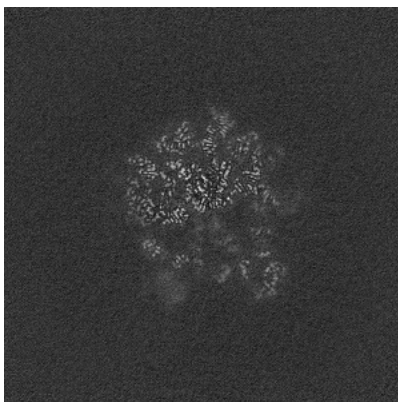


Z Index: 256

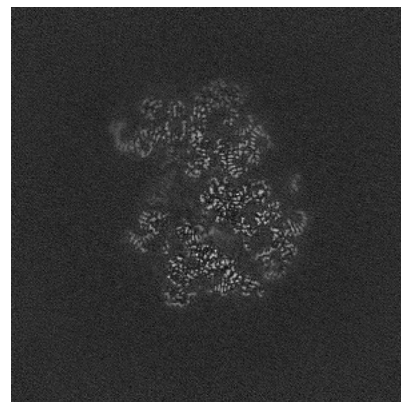
6.2.2 Raw map



X Index: 256



Y Index: 256

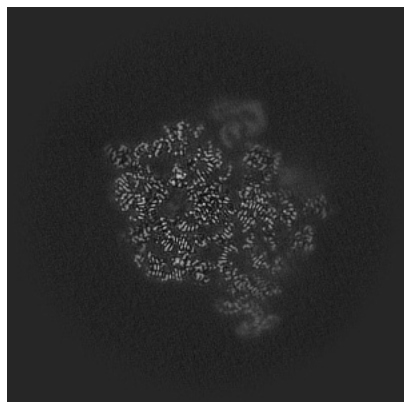


Z Index: 256

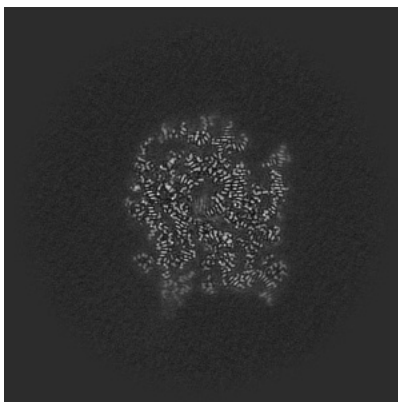
The images above show central slices of the map in three orthogonal directions.

6.3 Largest variance slices [i](#)

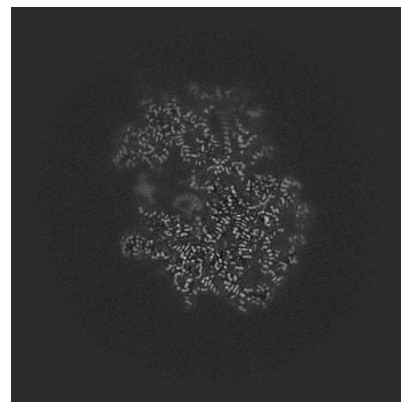
6.3.1 Primary map



X Index: 279

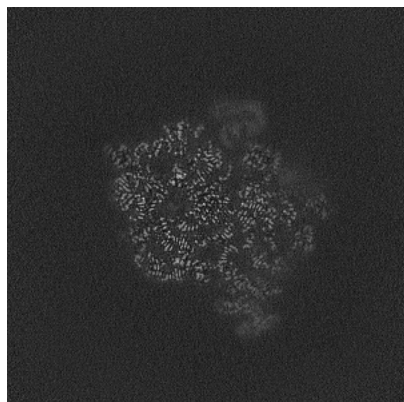


Y Index: 221

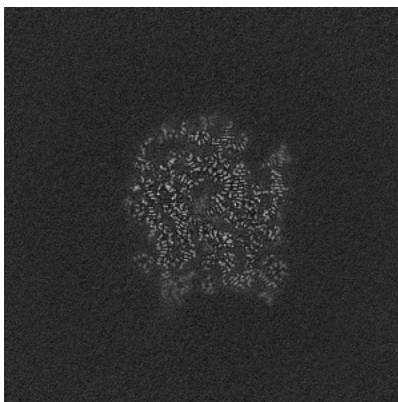


Z Index: 270

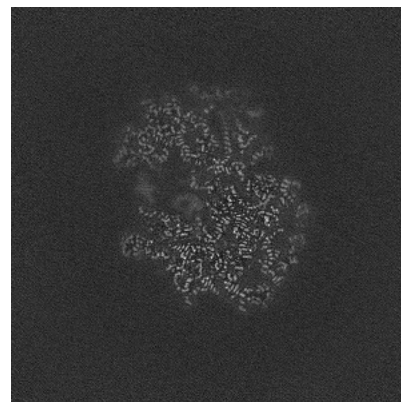
6.3.2 Raw map



X Index: 279



Y Index: 221

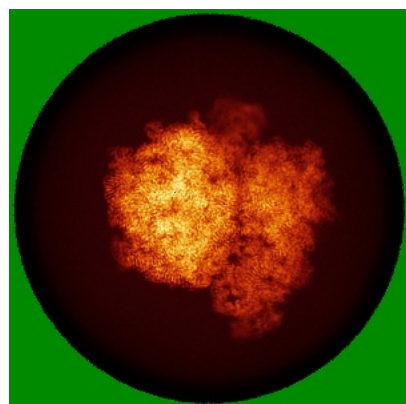


Z Index: 270

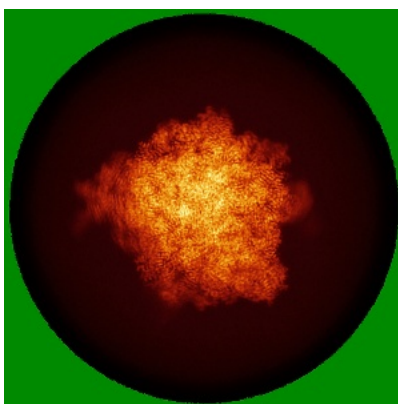
The images above show the largest variance slices of the map in three orthogonal directions.

6.4 Orthogonal standard-deviation projections (False-color) [i](#)

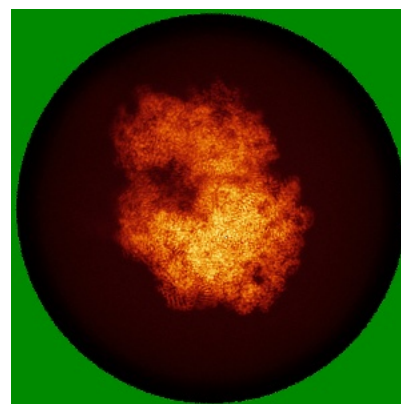
6.4.1 Primary map



X

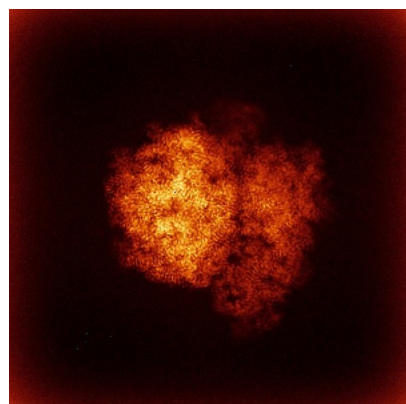


Y

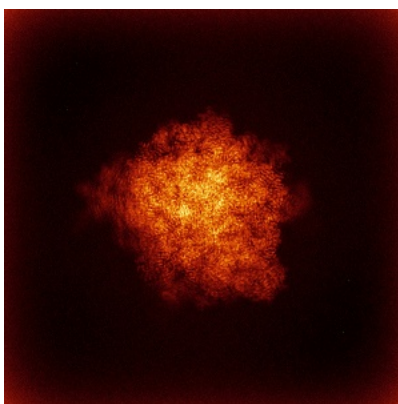


Z

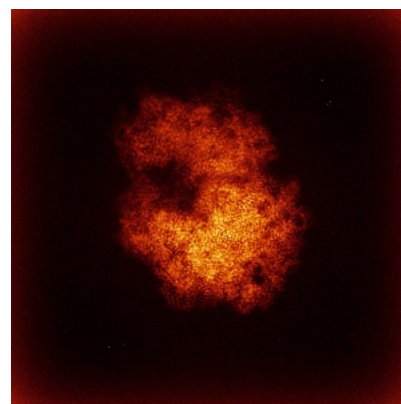
6.4.2 Raw map



X



Y

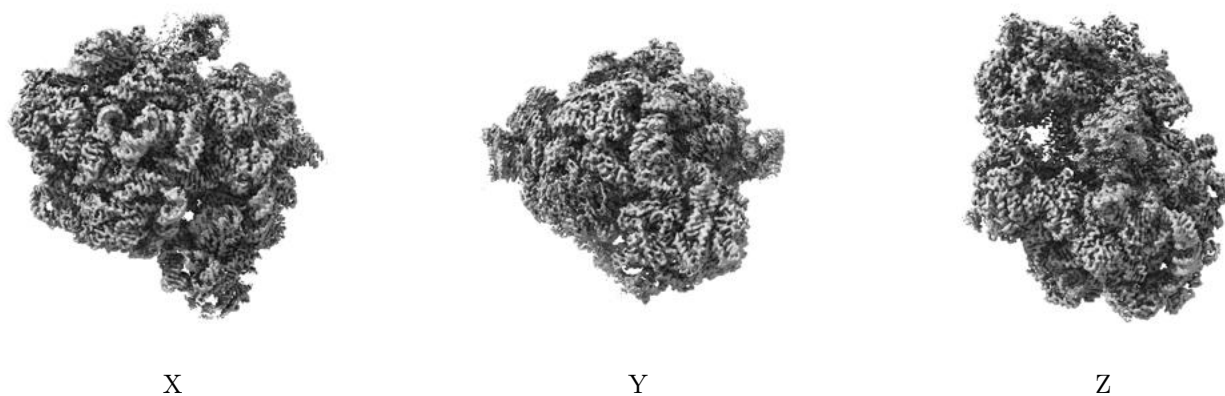


Z

The images above show the map standard deviation projections with false color in three orthogonal directions. Minimum values are shown in green, max in blue, and dark to light orange shades represent small to large values respectively.

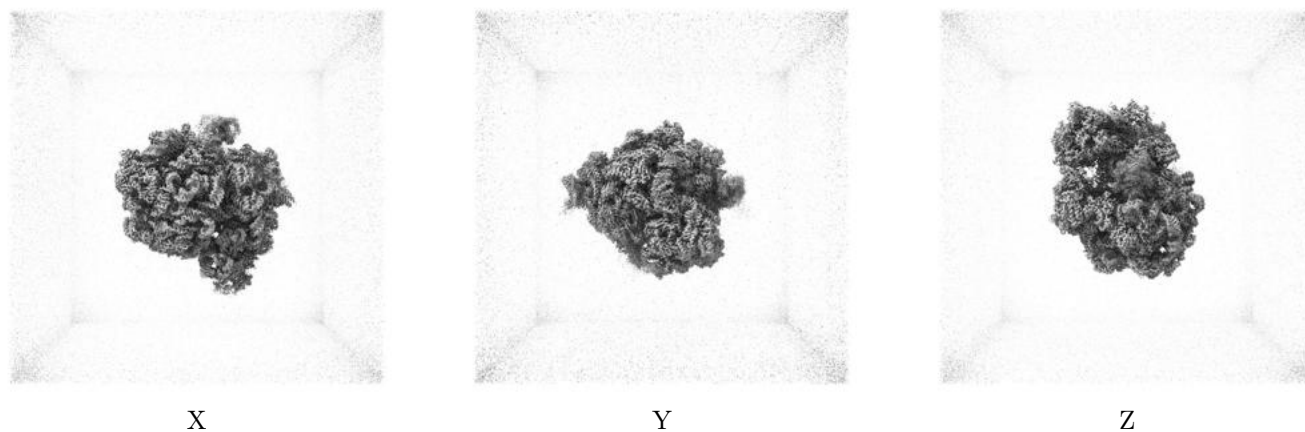
6.5 Orthogonal surface views [i](#)

6.5.1 Primary map



The images above show the 3D surface view of the map at the recommended contour level 0.4. These images, in conjunction with the slice images, may facilitate assessment of whether an appropriate contour level has been provided.

6.5.2 Raw map



These images show the 3D surface of the raw map. The raw map's contour level was selected so that its surface encloses the same volume as the primary map does at its recommended contour level.

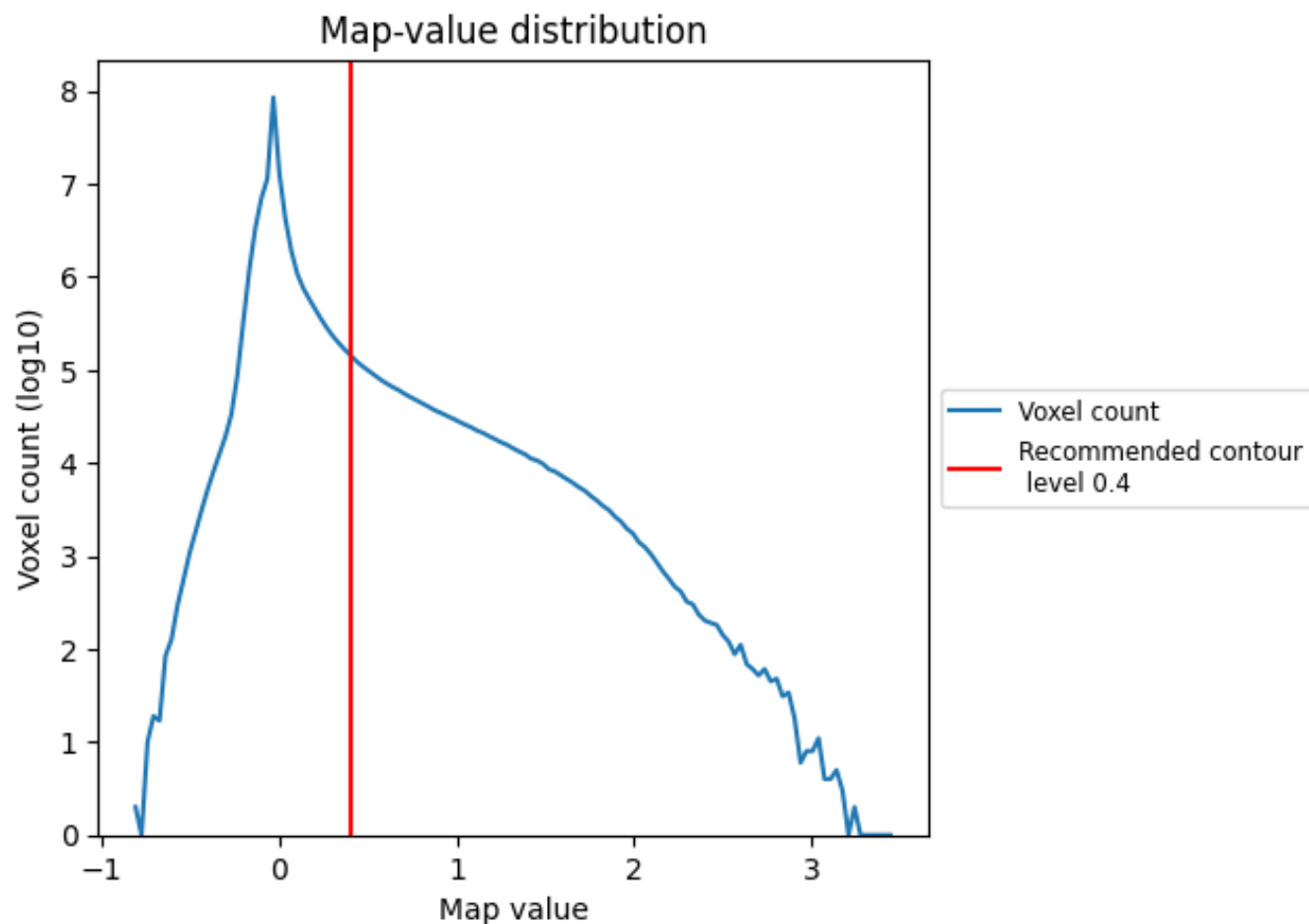
6.6 Mask visualisation [i](#)

This section was not generated. No masks/segmentation were deposited.

7 Map analysis [i](#)

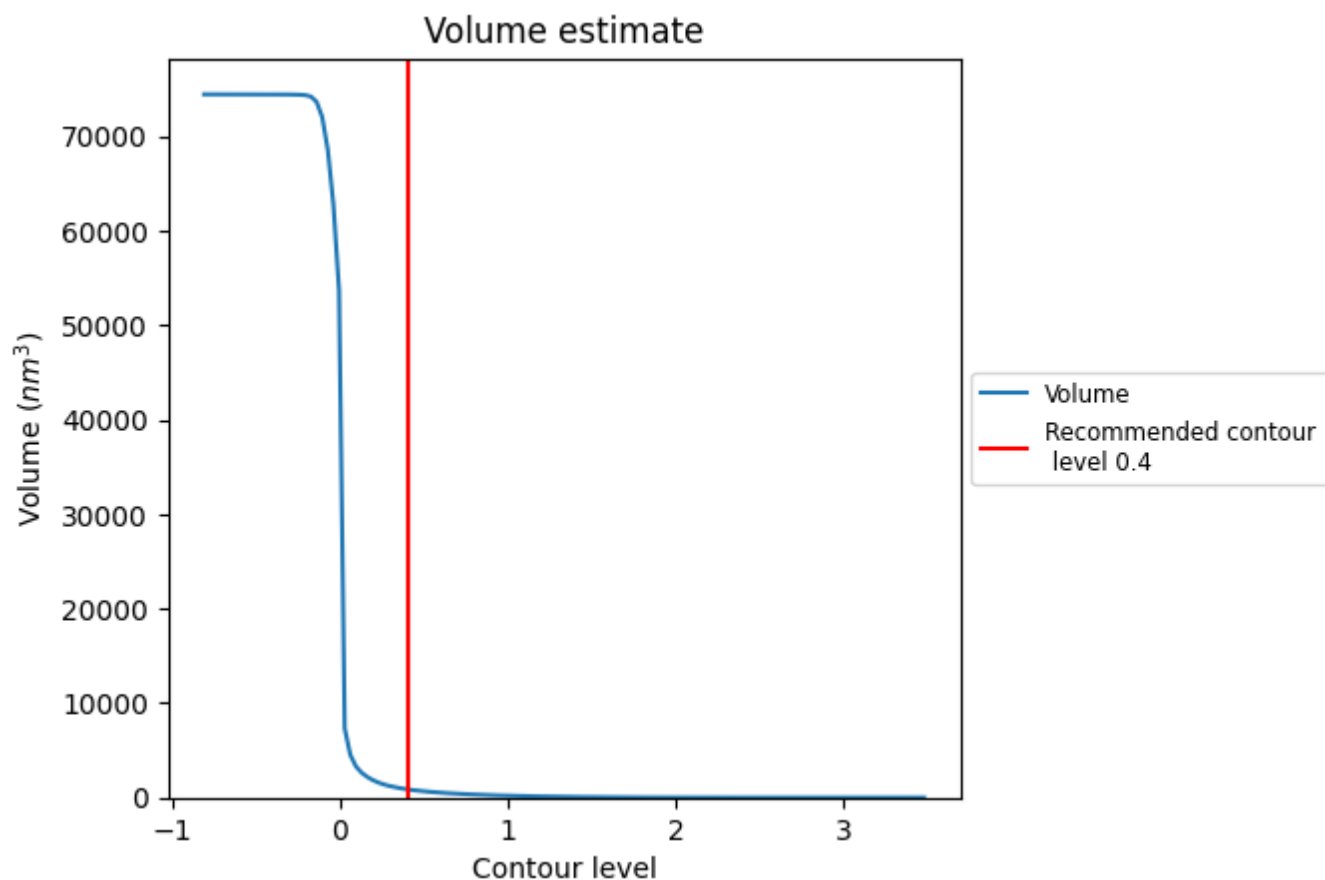
This section contains the results of statistical analysis of the map.

7.1 Map-value distribution [i](#)



The map-value distribution is plotted in 128 intervals along the x-axis. The y-axis is logarithmic. A spike in this graph at zero usually indicates that the volume has been masked.

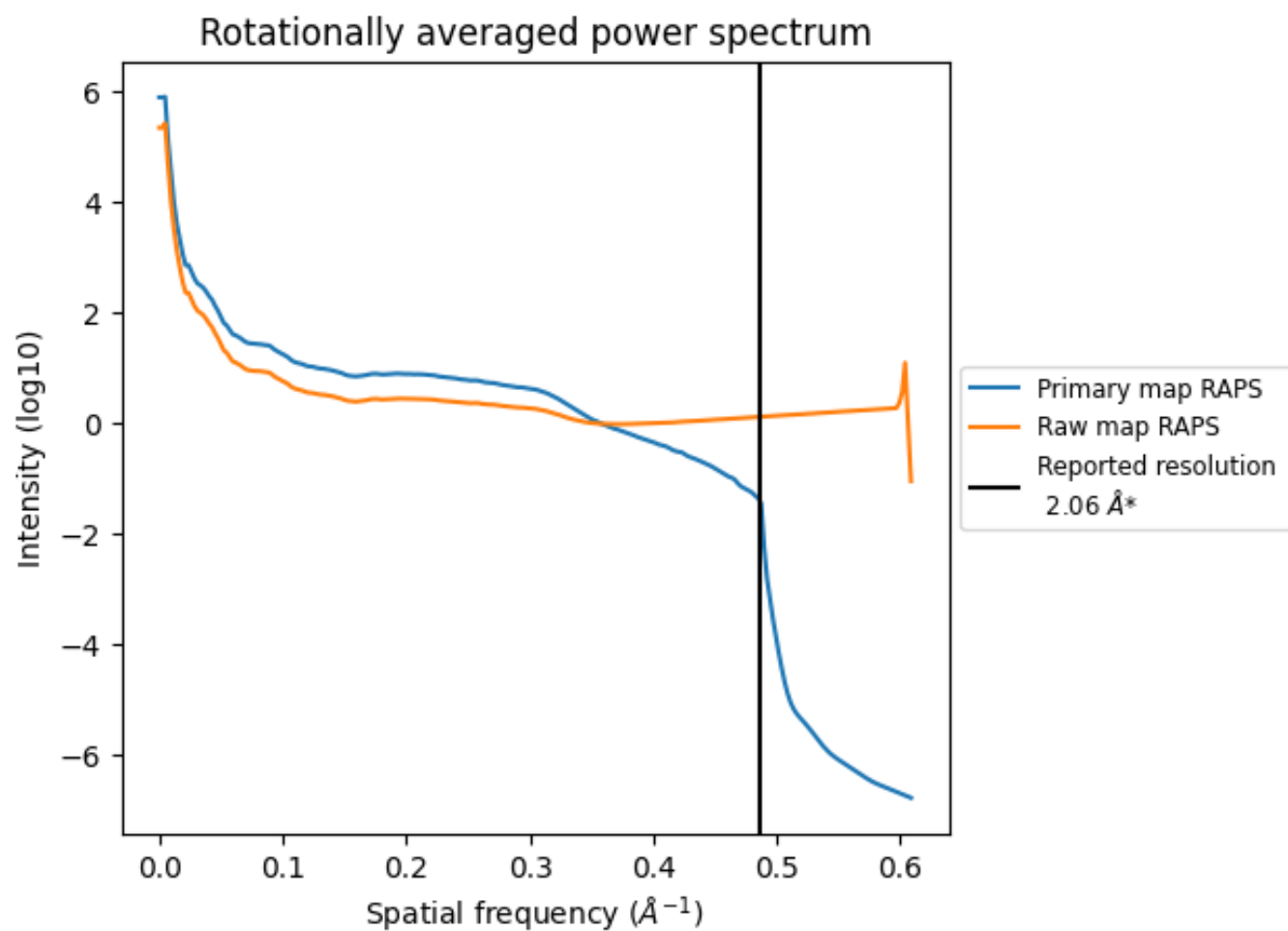
7.2 Volume estimate [i](#)



The volume at the recommended contour level is 872 nm³; this corresponds to an approximate mass of 788 kDa.

The volume estimate graph shows how the enclosed volume varies with the contour level. The recommended contour level is shown as a vertical line and the intersection between the line and the curve gives the volume of the enclosed surface at the given level.

7.3 Rotationally averaged power spectrum ⓘ

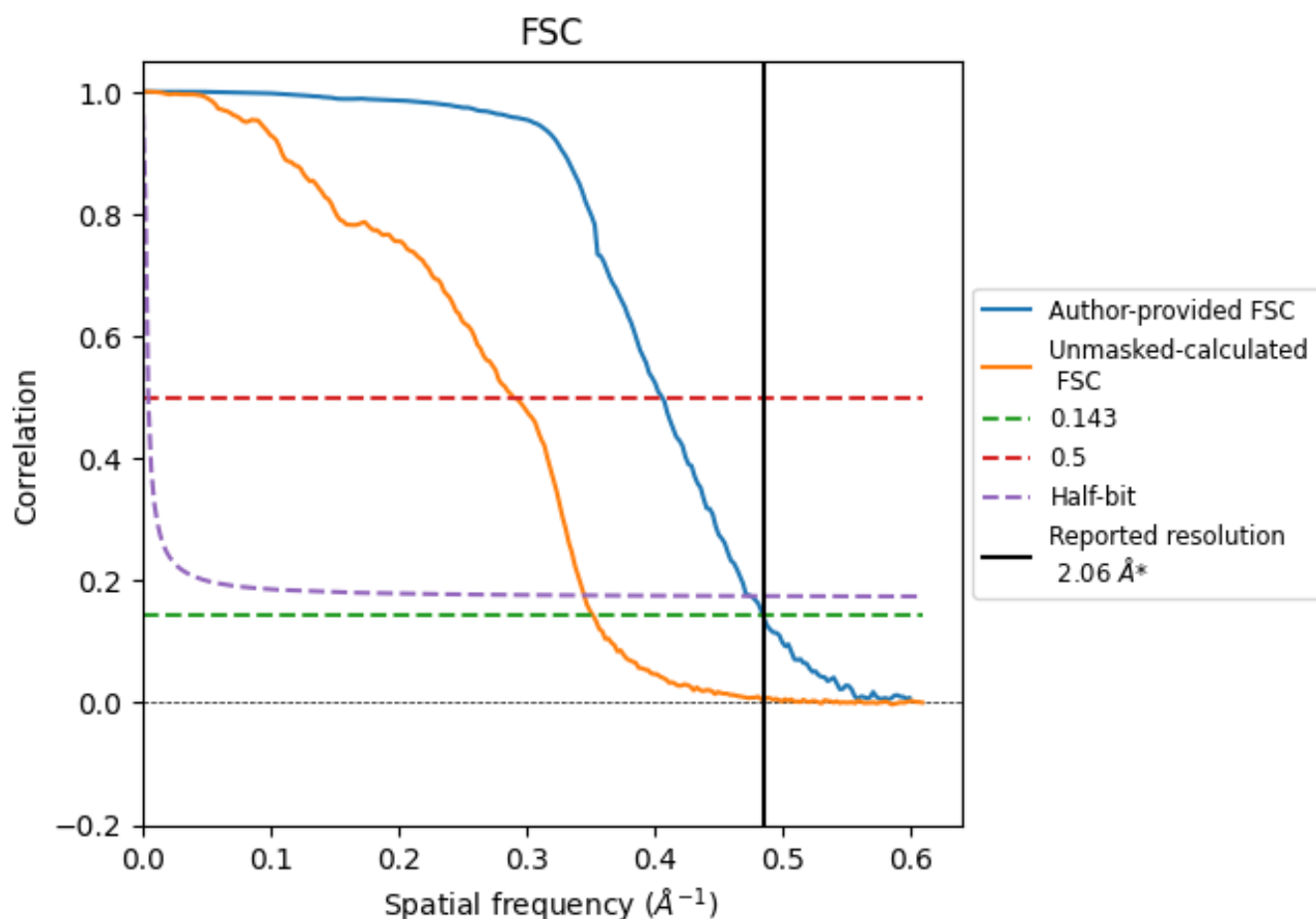


*Reported resolution corresponds to spatial frequency of 0.485 Å⁻¹

8 Fourier-Shell correlation [i](#)

Fourier-Shell Correlation (FSC) is the most commonly used method to estimate the resolution of single-particle and subtomogram-averaged maps. The shape of the curve depends on the imposed symmetry, mask and whether or not the two 3D reconstructions used were processed from a common reference. The reported resolution is shown as a black line. A curve is displayed for the half-bit criterion in addition to lines showing the 0.143 gold standard cut-off and 0.5 cut-off.

8.1 FSC [i](#)



*Reported resolution corresponds to spatial frequency of 0.485 Å⁻¹

8.2 Resolution estimates [i](#)

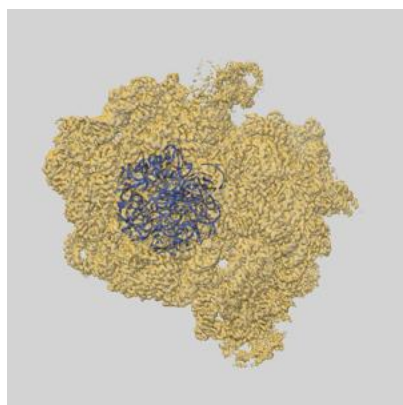
Resolution estimate (Å)	Estimation criterion (FSC cut-off)		
	0.143	0.5	Half-bit
Reported by author	2.06	-	-
Author-provided FSC curve	2.06	2.47	2.11
Unmasked-calculated*	2.84	3.46	2.90

*Resolution estimate based on FSC curve calculated by comparison of deposited half-maps. The value from deposited half-maps intersecting FSC 0.143 CUT-OFF 2.84 differs from the reported value 2.06 by more than 10 %

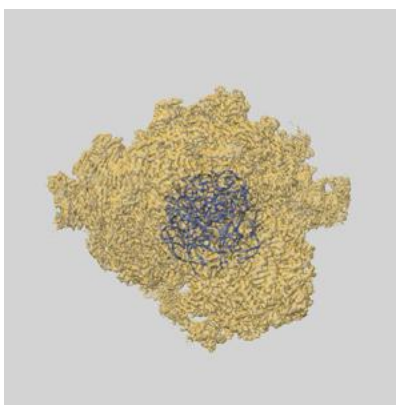
9 Map-model fit [i](#)

This section contains information regarding the fit between EMDB map EMD-55471 and PDB model 9T2N. Per-residue inclusion information can be found in [section 3](#) on [page 8](#).

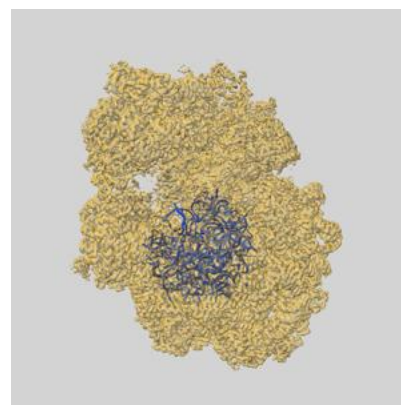
9.1 Map-model overlay [i](#)



X



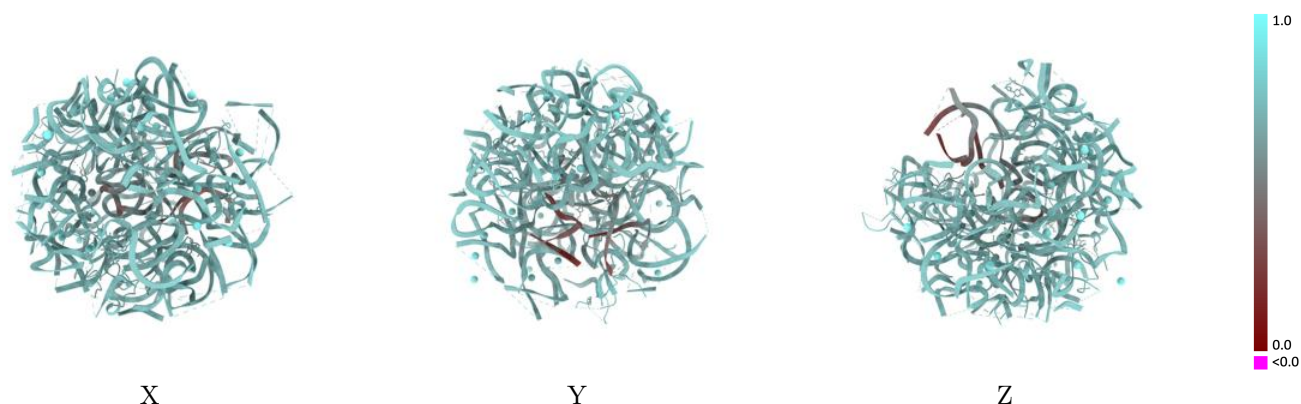
Y



Z

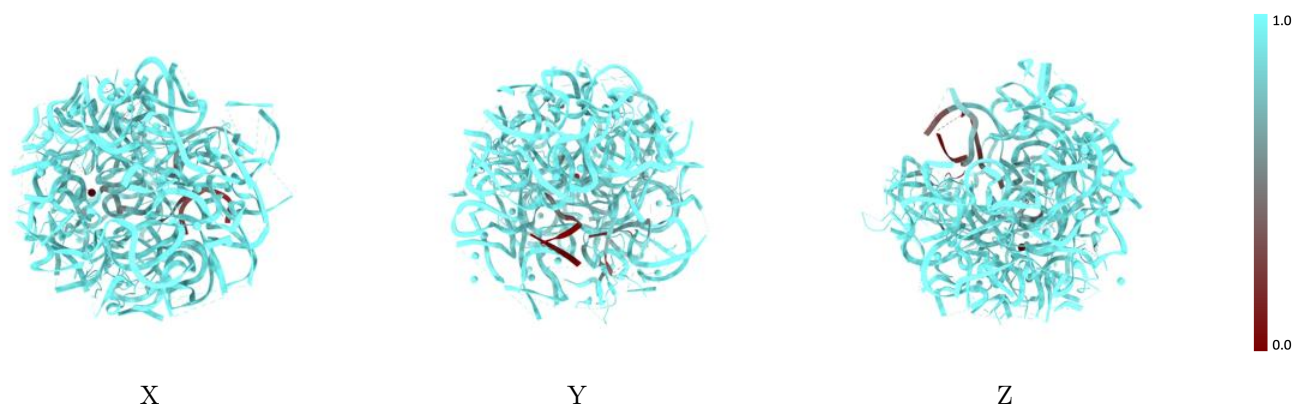
The images above show the 3D surface view of the map at the recommended contour level 0.4 at 50% transparency in yellow overlaid with a ribbon representation of the model coloured in blue. These images allow for the visual assessment of the quality of fit between the atomic model and the map.

9.2 Q-score mapped to coordinate model [i](#)



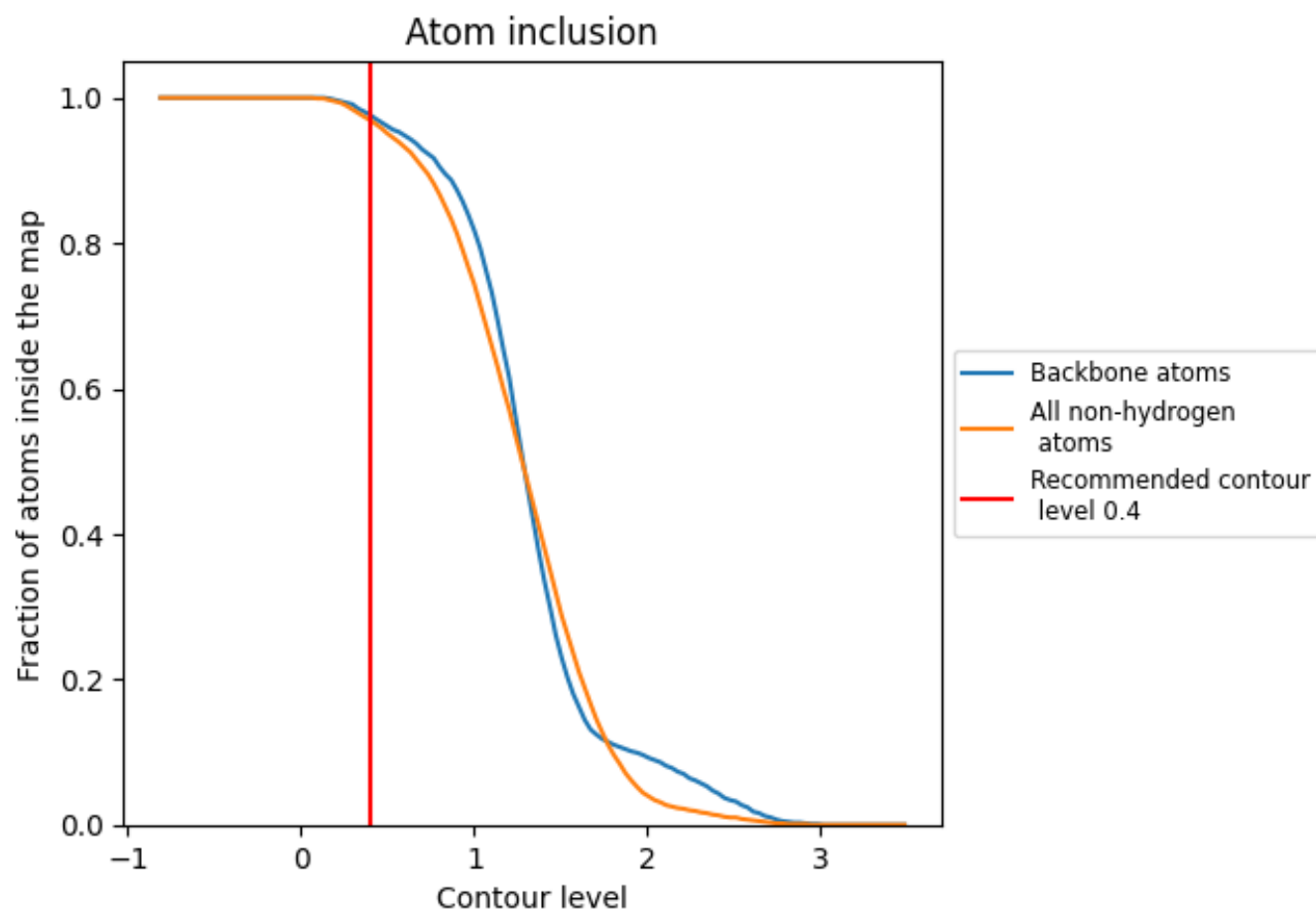
The images above show the model with each residue coloured according to its Q-score. This shows their resolvability in the map with higher Q-score values reflecting better resolvability. Please note: Q-score is calculating the resolvability of atoms, and thus high values are only expected at resolutions at which atoms can be resolved. Low Q-score values may therefore be expected for many entries.

9.3 Atom inclusion mapped to coordinate model [i](#)



The images above show the model with each residue coloured according to its atom inclusion. This shows to what extent they are inside the map at the recommended contour level (0.4).

9.4 Atom inclusion [i](#)



At the recommended contour level, 98% of all backbone atoms, 97% of all non-hydrogen atoms, are inside the map.

9.5 Map-model fit summary ⓘ

The table lists the average atom inclusion at the recommended contour level (0.4) and Q-score for the entire model and for each chain.

Chain	Atom inclusion	Q-score
All	<div></div> 0.9690	<div></div> 0.6820
Y	<div></div> 0.1750	<div></div> 0.3010
Z	<div></div> 0.6950	<div></div> 0.4620
a	<div></div> 0.9930	<div></div> 0.6930
b	<div></div> 0.9750	<div></div> 0.6370
c	<div></div> 0.9890	<div></div> 0.7240
d	<div></div> 0.9880	<div></div> 0.7160
e	<div></div> 0.9130	<div></div> 0.6610
i	<div></div> 1.0000	<div></div> 0.7130
k	<div></div> 0.9890	<div></div> 0.7220
l	<div></div> 0.9630	<div></div> 0.6950
q	<div></div> 1.0000	<div></div> 0.7200
r	<div></div> 0.8980	<div></div> 0.6970
v	<div></div> 0.7860	<div></div> 0.6400
z	<div></div> 1.0000	<div></div> 0.7230

1.0

0.0

<0.0