



Full wwPDB X-ray Structure Validation Report ⓘ

Mar 5, 2026 – 01:09 AM UTC

PDB ID : 9SZJ / pdb_00009szj
Title : Crystal structure of Y1230H c-MET bound by capmatinib.
Authors : Collie, G.W.; Russell, I.C.
Deposited on : 2025-10-14
Resolution : 2.29 Å(reported)

This is a Full wwPDB X-ray Structure Validation Report for a publicly released PDB entry.

We welcome your comments at validation@mail.wwpdb.org

A user guide is available at

<https://www.wwpdb.org/validation/2017/XrayValidationReportHelp>

with specific help available everywhere you see the ⓘ symbol.

The types of validation reports are described at

<http://www.wwpdb.org/validation/2017/FAQs#types>.

The following versions of software and data (see [references ⓘ](#)) were used in the production of this report:

MolProbity : 4-5-2 with Phenix2.0
Mogul : 2022.3.0, CSD as543be (2022)
Xtriage (Phenix) : 2.0
EDS : 3.0
Buster-report : wwPDB partial adaption of 1.1.7 (2018)
Percentile statistics : 20250101.v01 (using entries in the PDB archive January 1st 2025)
CCP4 : 9.0.010 (Gargrove)
Density-Fitness : 1.0.12
Ideal geometry (proteins) : Engh & Huber (2001)
Ideal geometry (DNA, RNA) : Parkinson et al. (1996)
Validation Pipeline (wwPDB-VP) : 2.49

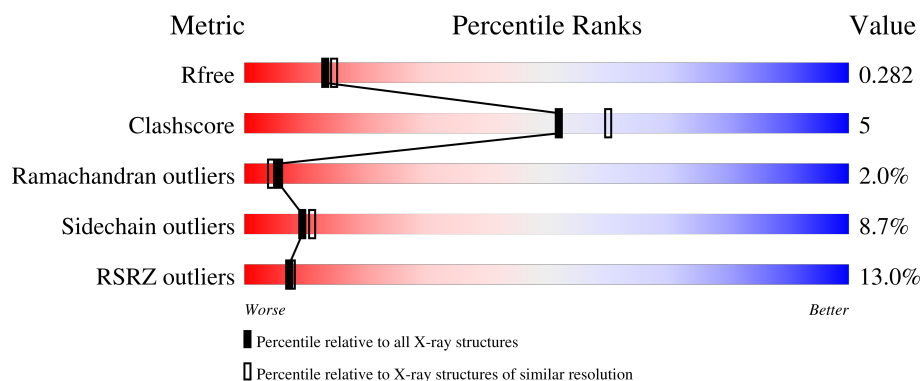
1 Overall quality at a glance

The following experimental techniques were used to determine the structure:

X-RAY DIFFRACTION

The reported resolution of this entry is 2.29 Å.

Percentile scores (ranging between 0-100) for global validation metrics of the entry are shown in the following graphic. The table shows the number of entries on which the scores are based.



Metric	Whole archive (#Entries)	Similar resolution (#Entries, resolution range(Å))
R_{free}	180053	9078 (2.30-2.26)
Clashscore	190562	9802 (2.30-2.26)
Ramachandran outliers	187476	9690 (2.30-2.26)
Sidechain outliers	187428	9691 (2.30-2.26)
RSRZ outliers	180081	9085 (2.30-2.26)

The table below summarises the geometric issues observed across the polymeric chains and their fit to the electron density. The red, orange, yellow and green segments of the lower bar indicate the fraction of residues that contain outliers for ≥ 3 , 2, 1 and 0 types of geometric quality criteria respectively. A grey segment represents the fraction of residues that are not modelled. The numeric value for each fraction is indicated below the corresponding segment, with a dot representing fractions $\leq 5\%$. The upper red bar (where present) indicates the fraction of residues that have poor fit to the electron density. The numeric value is given above the bar.

Mol	Chain	Length	Quality of chain
1	A	309	<div> <div>11%</div> <div>68%</div> <div>15%</div> <div>•</div> <div>15%</div> </div>

2 Entry composition [i](#)

There are 3 unique types of molecules in this entry. The entry contains 2103 atoms, of which 0 are hydrogens and 0 are deuteriums.

In the tables below, the ZeroOcc column contains the number of atoms modelled with zero occupancy, the AltConf column contains the number of residues with at least one atom in alternate conformation and the Trace column contains the number of residues modelled with at most 2 atoms.

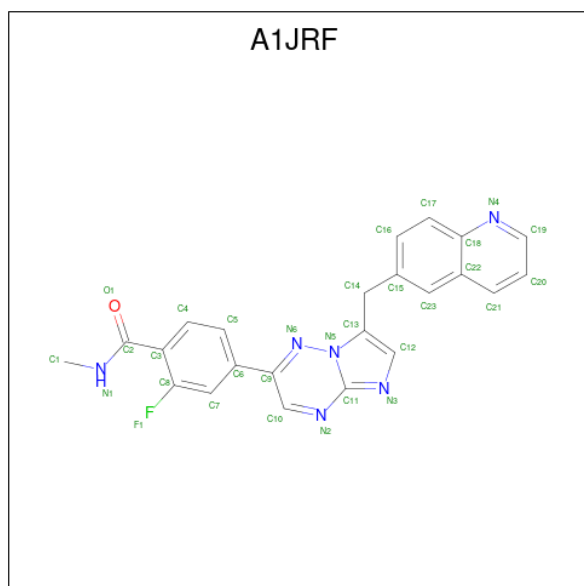
- Molecule 1 is a protein called Hepatocyte growth factor receptor.

Mol	Chain	Residues	Atoms					ZeroOcc	AltConf	Trace
			Total	C	N	O	S			
1	A	262	2044	1328	345	356	15	0	0	0

There is a discrepancy between the modelled and reference sequences:

Chain	Residue	Modelled	Actual	Comment	Reference
A	1230	HIS	TYR	variant	UNP P08581

- Molecule 2 is Capmatinib (CCD ID: A1JRF) (formula: C₂₃H₁₇FN₆O) (labeled as "Ligand of Interest" by depositor).



Mol	Chain	Residues	Atoms					ZeroOcc	AltConf
			Total	C	F	N	O		
2	A	1	39	30	2	6	1	0	1

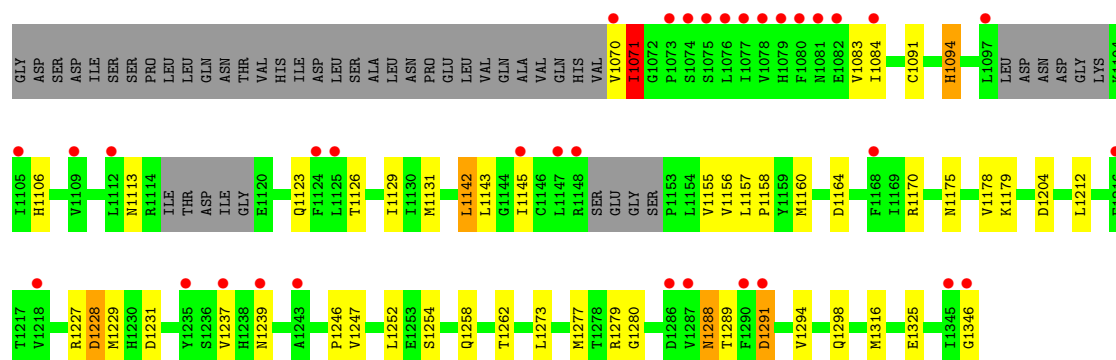
- Molecule 3 is water.

Mol	Chain	Residues	Atoms		ZeroOcc	AltConf
3	A	20	Total	O	0	0
			20	20		

3 Residue-property plots [i](#)

These plots are drawn for all protein, RNA, DNA and oligosaccharide chains in the entry. The first graphic for a chain summarises the proportions of the various outlier classes displayed in the second graphic. The second graphic shows the sequence view annotated by issues in geometry and electron density. Residues are color-coded according to the number of geometric quality criteria for which they contain at least one outlier: green = 0, yellow = 1, orange = 2 and red = 3 or more. A red dot above a residue indicates a poor fit to the electron density ($RSRZ > 2$). Stretches of 2 or more consecutive residues without any outlier are shown as a green connector. Residues present in the sample, but not in the model, are shown in grey.

- Molecule 1: Hepatocyte growth factor receptor



4 Data and refinement statistics

Property	Value	Source
Space group	P 21 21 21	Depositor
Cell constants a, b, c, α , β , γ	42.26Å 43.39Å 158.33Å 90.00° 90.00° 90.00°	Depositor
Resolution (Å)	79.16 – 2.29 79.16 – 2.29	Depositor EDS
% Data completeness (in resolution range)	53.8 (79.16-2.29) 53.8 (79.16-2.29)	Depositor EDS
R_{merge}	(Not available)	Depositor
R_{sym}	(Not available)	Depositor
$\langle I/\sigma(I) \rangle$ ¹	1.40 (at 2.29Å)	Xtriage
Refinement program	BUSTER 2.11.8	Depositor
R, R_{free}	0.230 , 0.304 0.226 , 0.282	Depositor DCC
R_{free} test set	387 reflections (5.21%)	wwPDB-VP
Wilson B-factor (Å ²)	40.5	Xtriage
Anisotropy	0.071	Xtriage
Bulk solvent k_{sol} (e/Å ³), B_{sol} (Å ²)	0.34 , 46.5	EDS
L-test for twinning ²	$\langle L \rangle = 0.46$, $\langle L^2 \rangle = 0.30$	Xtriage
Estimated twinning fraction	0.047 for k,h,-l	Xtriage
F_o, F_c correlation	0.90	EDS
Total number of atoms	2103	wwPDB-VP
Average B, all atoms (Å ²)	47.0	wwPDB-VP

Xtriage's analysis on translational NCS is as follows: *The largest off-origin peak in the Patterson function is 6.38% of the height of the origin peak. No significant pseudotranslation is detected.*

¹Intensities estimated from amplitudes.

²Theoretical values of $\langle |L| \rangle$, $\langle L^2 \rangle$ for acentric reflections are 0.5, 0.333 respectively for untwinned datasets, and 0.375, 0.2 for perfectly twinned datasets.

5 Model quality [i](#)

5.1 Standard geometry [i](#)

Bond lengths and bond angles in the following residue types are not validated in this section: A1JRF

The Z score for a bond length (or angle) is the number of standard deviations the observed value is removed from the expected value. A bond length (or angle) with $|Z| > 5$ is considered an outlier worth inspection. RMSZ is the root-mean-square of all Z scores of the bond lengths (or angles).

Mol	Chain	Bond lengths		Bond angles	
		RMSZ	$\# Z > 5$	RMSZ	$\# Z > 5$
1	A	0.74	0/2096	1.10	5/2843 (0.2%)

There are no bond length outliers.

All (5) bond angle outliers are listed below:

Mol	Chain	Res	Type	Atoms	Z	Observed($^{\circ}$)	Ideal($^{\circ}$)
1	A	1246	PRO	CA-C-N	6.08	132.91	121.97
1	A	1246	PRO	C-N-CA	6.08	132.91	121.97
1	A	1228	ASP	CA-CB-CG	5.11	117.71	112.60
1	A	1164	ASP	CA-C-N	5.01	127.00	120.28
1	A	1164	ASP	C-N-CA	5.01	127.00	120.28

There are no chirality outliers.

There are no planarity outliers.

5.2 Too-close contacts [i](#)

In the following table, the Non-H and H(model) columns list the number of non-hydrogen atoms and hydrogen atoms in the chain respectively. The H(added) column lists the number of hydrogen atoms added and optimized by MolProbity. The Clashes column lists the number of clashes within the asymmetric unit, whereas Symm-Clashes lists symmetry-related clashes.

Mol	Chain	Non-H	H(model)	H(added)	Clashes	Symm-Clashes
1	A	2044	0	2014	21	0
2	A	39	0	0	0	0
3	A	20	0	0	0	0
All	All	2103	0	2014	21	0

The all-atom clashscore is defined as the number of clashes found per 1000 atoms (including

hydrogen atoms). The all-atom clashscore for this structure is 5.

All (21) close contacts within the same asymmetric unit are listed below, sorted by their clash magnitude.

Atom-1	Atom-2	Interatomic distance (Å)	Clash overlap (Å)
1:A:1204:ASP:HB3	1:A:1227:ARG:HH21	1.47	0.80
1:A:1204:ASP:HB3	1:A:1227:ARG:NH2	2.01	0.76
1:A:1084:ILE:HG21	1:A:1094:HIS:CD2	2.34	0.62
1:A:1273:LEU:HB3	1:A:1316:MET:HE2	1.87	0.56
1:A:1084:ILE:CG2	1:A:1094:HIS:HD2	2.18	0.56
1:A:1094:HIS:HE1	1:A:1106:HIS:NE2	2.07	0.52
1:A:1094:HIS:CE1	1:A:1106:HIS:NE2	2.77	0.52
1:A:1070:VAL:HG12	1:A:1071:ILE:HG23	1.92	0.51
1:A:1170:ARG:HG3	1:A:1280:GLY:HA3	1.93	0.50
1:A:1288:ASN:O	1:A:1291:ASP:OD1	2.29	0.50
1:A:1179:LYS:HD3	1:A:1346:GLY:HA2	1.94	0.49
1:A:1084:ILE:CG2	1:A:1094:HIS:CD2	2.96	0.48
1:A:1178:VAL:HG13	1:A:1277:MET:HE1	1.96	0.47
1:A:1070:VAL:O	1:A:1145:ILE:O	2.33	0.46
1:A:1294:VAL:O	1:A:1298:GLN:HG3	2.15	0.46
1:A:1325:GLU:H	1:A:1325:GLU:CD	2.25	0.44
1:A:1143:LEU:HB2	1:A:1156:VAL:HG12	1.99	0.43
1:A:1158:PRO:HB2	1:A:1160:MET:HE2	1.99	0.43
1:A:1142:LEU:HD12	1:A:1155:VAL:HG13	2.03	0.41
1:A:1126:THR:HA	1:A:1129:ILE:HD12	2.04	0.40
1:A:1175:ASN:HD22	1:A:1279:ARG:HH22	1.69	0.40

There are no symmetry-related clashes.

5.3 Torsion angles

5.3.1 Protein backbone

In the following table, the Percentiles column shows the percent Ramachandran outliers of the chain as a percentile score with respect to all X-ray entries followed by that with respect to entries of similar resolution.

The Analysed column shows the number of residues for which the backbone conformation was analysed, and the total number of residues.

Mol	Chain	Analysed	Favoured	Allowed	Outliers	Percentiles
1	A	254/309 (82%)	233 (92%)	16 (6%)	5 (2%)	6 4

All (5) Ramachandran outliers are listed below:

Mol	Chain	Res	Type
1	A	1071	ILE
1	A	1231	ASP
1	A	1247	VAL
1	A	1289	THR
1	A	1113	ASN

5.3.2 Protein sidechains ⓘ

In the following table, the Percentiles column shows the percent sidechain outliers of the chain as a percentile score with respect to all X-ray entries followed by that with respect to entries of similar resolution.

The Analysed column shows the number of residues for which the sidechain conformation was analysed, and the total number of residues.

Mol	Chain	Analysed	Rotameric	Outliers	Percentiles
1	A	219/274 (80%)	200 (91%)	19 (9%)	9 11

All (19) residues with a non-rotameric sidechain are listed below:

Mol	Chain	Res	Type
1	A	1071	ILE
1	A	1083	VAL
1	A	1091	CYS
1	A	1094	HIS
1	A	1123	GLN
1	A	1131	MET
1	A	1142	LEU
1	A	1157	LEU
1	A	1212	LEU
1	A	1228	ASP
1	A	1229	MET
1	A	1237	VAL
1	A	1239	ASN
1	A	1252	LEU
1	A	1254	SER
1	A	1258	GLN
1	A	1262	THR
1	A	1288	ASN
1	A	1291	ASP

Sometimes sidechains can be flipped to improve hydrogen bonding and reduce clashes. All (6) such sidechains are listed below:

Mol	Chain	Res	Type
1	A	1079	HIS
1	A	1094	HIS
1	A	1123	GLN
1	A	1175	ASN
1	A	1239	ASN
1	A	1258	GLN

5.3.3 RNA ⓘ

There are no RNA molecules in this entry.

5.4 Non-standard residues in protein, DNA, RNA chains ⓘ

There are no non-standard protein/DNA/RNA residues in this entry.

5.5 Carbohydrates ⓘ

There are no oligosaccharides in this entry.

5.6 Ligand geometry ⓘ

2 ligands are modelled in this entry.

In the following table, the Counts columns list the number of bonds (or angles) for which Mogul statistics could be retrieved, the number of bonds (or angles) that are observed in the model and the number of bonds (or angles) that are defined in the Chemical Component Dictionary. The Link column lists molecule types, if any, to which the group is linked. The Z score for a bond length (or angle) is the number of standard deviations the observed value is removed from the expected value. A bond length (or angle) with $|Z| > 2$ is considered an outlier worth inspection. RMSZ is the root-mean-square of all Z scores of the bond lengths (or angles).

Mol	Type	Chain	Res	Link	Bond lengths			Bond angles		
					Counts	RMSZ	$\# Z > 2$	Counts	RMSZ	$\# Z > 2$
2	A1JRF	A	1401[B]	-	34,35,35	0.84	1 (2%)	44,50,50	0.92	2 (4%)
2	A1JRF	A	1401[A]	-	34,35,35	0.83	1 (2%)	44,50,50	0.91	3 (6%)

In the following table, the Chirals column lists the number of chiral outliers, the number of chiral centers analysed, the number of these observed in the model and the number defined in the Chemical Component Dictionary. Similar counts are reported in the Torsion and Rings columns.

'-' means no outliers of that kind were identified.

Mol	Type	Chain	Res	Link	Chirals	Torsions	Rings
2	A1JRF	A	1401[B]	-	-	2/14/14/14	0/5/5/5
2	A1JRF	A	1401[A]	-	-	0/14/14/14	0/5/5/5

All (2) bond length outliers are listed below:

Mol	Chain	Res	Type	Atoms	Z	Observed(Å)	Ideal(Å)
2	A	1401[A]	A1JRF	C10-N2	3.20	1.37	1.32
2	A	1401[B]	A1JRF	C10-N2	3.20	1.37	1.32

All (5) bond angle outliers are listed below:

Mol	Chain	Res	Type	Atoms	Z	Observed(°)	Ideal(°)
2	A	1401[A]	A1JRF	N5-C11-N3	3.30	112.14	109.19
2	A	1401[B]	A1JRF	N5-C11-N3	3.30	112.14	109.19
2	A	1401[A]	A1JRF	C6-C9-N6	2.17	118.45	115.33
2	A	1401[B]	A1JRF	C9-N6-N5	-2.09	113.25	114.89
2	A	1401[A]	A1JRF	C9-N6-N5	-2.07	113.27	114.89

There are no chirality outliers.

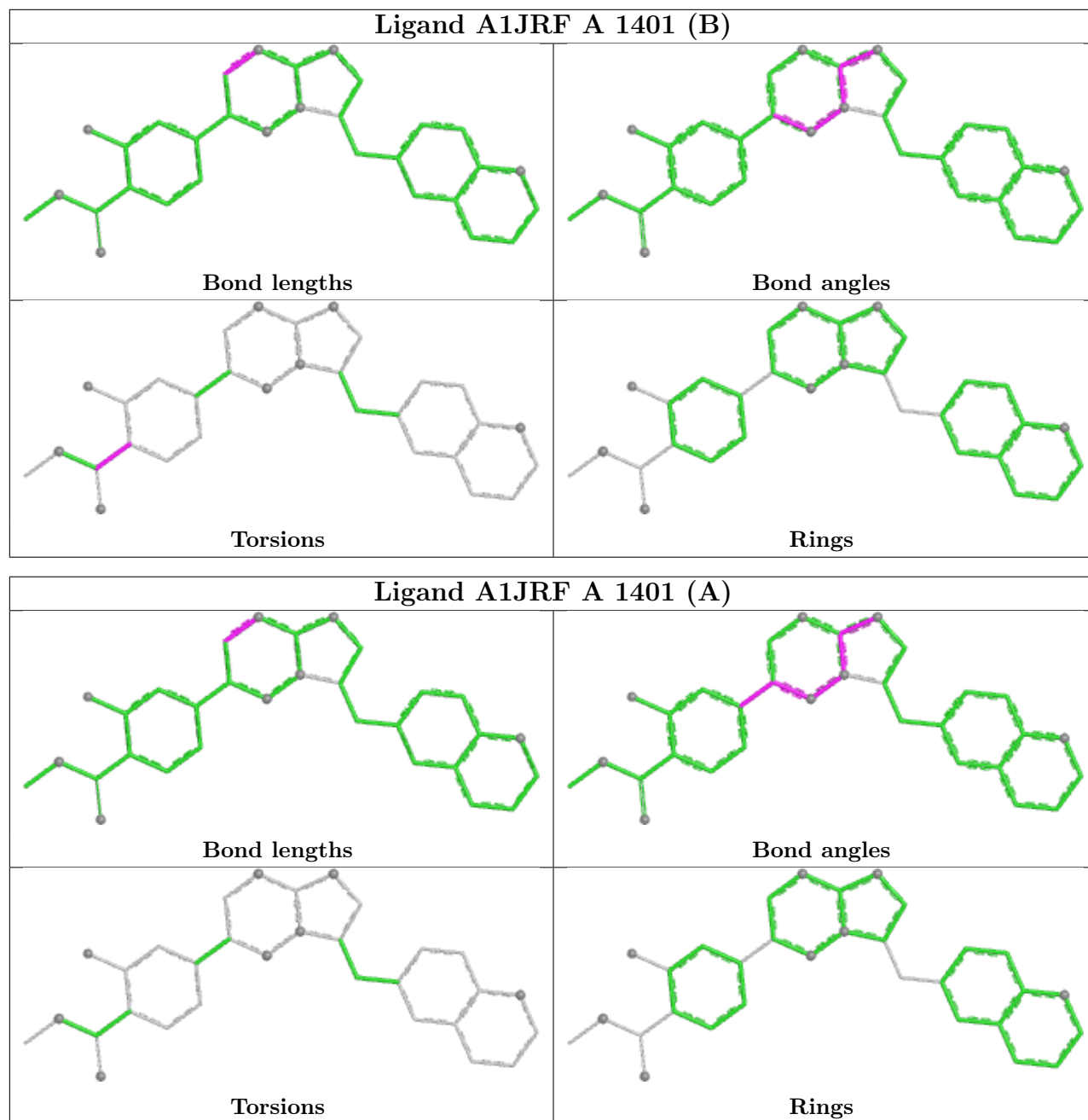
All (2) torsion outliers are listed below:

Mol	Chain	Res	Type	Atoms
2	A	1401[B]	A1JRF	N1-C2-C3-C8
2	A	1401[B]	A1JRF	O1-C2-C3-C8

There are no ring outliers.

No monomer is involved in short contacts.

The following is a two-dimensional graphical depiction of Mogul quality analysis of bond lengths, bond angles, torsion angles, and ring geometry for all instances of the Ligand of Interest. In addition, ligands with molecular weight > 250 and outliers as shown on the validation Tables will also be included. For torsion angles, if less than 5% of the Mogul distribution of torsion angles is within 10 degrees of the torsion angle in question, then that torsion angle is considered an outlier. Any bond that is central to one or more torsion angles identified as an outlier by Mogul will be highlighted in the graph. For rings, the root-mean-square deviation (RMSD) between the ring in question and similar rings identified by Mogul is calculated over all ring torsion angles. If the average RMSD is greater than 60 degrees and the minimal RMSD between the ring in question and any Mogul-identified rings is also greater than 60 degrees, then that ring is considered an outlier. The outliers are highlighted in purple. The color gray indicates Mogul did not find sufficient equivalents in the CSD to analyse the geometry.



5.7 Other polymers [i](#)

There are no such residues in this entry.

5.8 Polymer linkage issues [i](#)

There are no chain breaks in this entry.

6 Fit of model and data ⓘ

6.1 Protein, DNA and RNA chains ⓘ

In the following table, the column labelled ‘#RSRZ > 2’ contains the number (and percentage) of RSRZ outliers, followed by percent RSRZ outliers for the chain as percentile scores relative to all X-ray entries and entries of similar resolution. The OWAB column contains the minimum, median, 95th percentile and maximum values of the occupancy-weighted average B-factor per residue. The column labelled ‘Q < 0.9’ lists the number of (and percentage) of residues with an average occupancy less than 0.9.

Mol	Chain	Analysed	<RSRZ>	#RSRZ>2	OWAB(Å ²)	Q<0.9
1	A	262/309 (84%)	0.73	34 (12%) 7 8	18, 45, 72, 77	0

All (34) RSRZ outliers are listed below:

Mol	Chain	Res	Type	RSRZ
1	A	1070	VAL	4.7
1	A	1112	LEU	4.1
1	A	1097	LEU	3.5
1	A	1124	PHE	3.5
1	A	1078	VAL	3.3
1	A	1290	PHE	3.2
1	A	1084	ILE	3.2
1	A	1168	PHE	2.8
1	A	1077	ILE	2.7
1	A	1346	GLY	2.6
1	A	1218	VAL	2.5
1	A	1286	ASP	2.5
1	A	1105	ILE	2.5
1	A	1148	ARG	2.4
1	A	1243	ALA	2.4
1	A	1147	LEU	2.4
1	A	1216	PHE	2.3
1	A	1076	LEU	2.3
1	A	1125	LEU	2.3
1	A	1235	TYR	2.3
1	A	1345	ILE	2.3
1	A	1075	SER	2.2
1	A	1109	VAL	2.2
1	A	1080	PHE	2.2
1	A	1145	ILE	2.1
1	A	1239	ASN	2.1
1	A	1081	ASN	2.1

Continued on next page...

Continued from previous page...

Mol	Chain	Res	Type	RSRZ
1	A	1237	VAL	2.1
1	A	1079	HIS	2.1
1	A	1291	ASP	2.0
1	A	1073	PRO	2.0
1	A	1287	VAL	2.0
1	A	1074	SER	2.0
1	A	1082	GLU	2.0

6.2 Non-standard residues in protein, DNA, RNA chains [i](#)

There are no non-standard protein/DNA/RNA residues in this entry.

6.3 Carbohydrates [i](#)

There are no oligosaccharides in this entry.

6.4 Ligands [i](#)

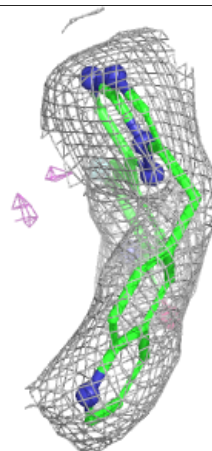
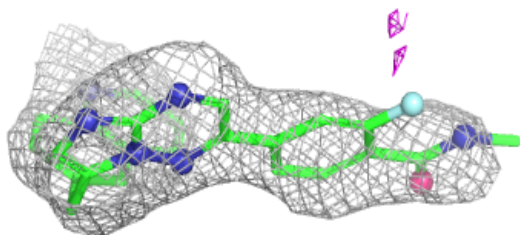
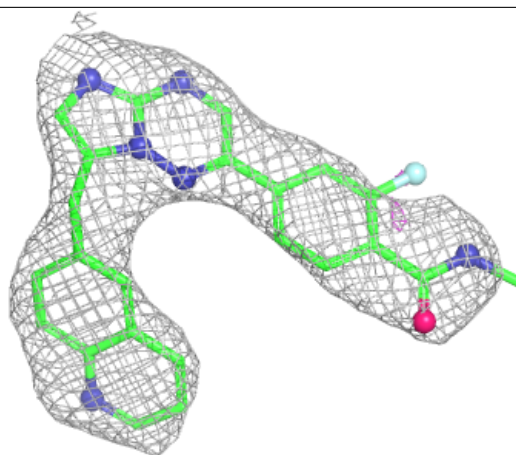
In the following table, the Atoms column lists the number of modelled atoms in the group and the number defined in the chemical component dictionary. The B-factors column lists the minimum, median, 95th percentile and maximum values of B factors of atoms in the group. The column labelled 'Q< 0.9' lists the number of atoms with occupancy less than 0.9.

Mol	Type	Chain	Res	Atoms	RSCC	RSR	B-factors(\AA^2)	Q<0.9
2	A1JRF	A	1401[A]	31/31	0.90	0.10	44,50,53,53	8
2	A1JRF	A	1401[B]	31/31	0.90	0.10	44,50,53,53	8

The following is a graphical depiction of the model fit to experimental electron density of all instances of the Ligand of Interest. In addition, ligands with molecular weight > 250 and outliers as shown on the geometry validation Tables will also be included. Each fit is shown from different orientation to approximate a three-dimensional view.

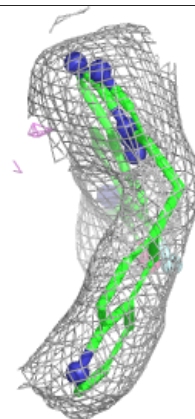
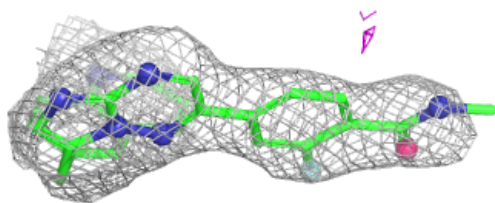
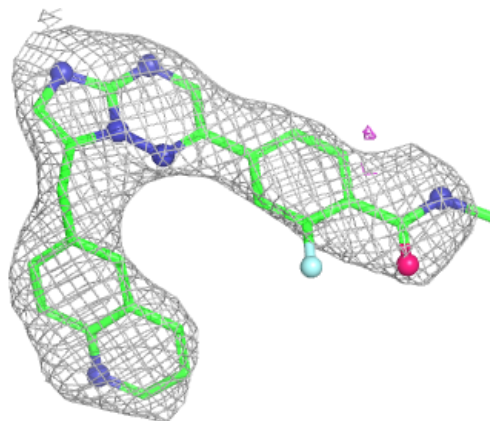
Electron density around A1JRF A 1401 (A):

$2mF_o - DF_c$ (at 0.7 rmsd) in gray
 $mF_o - DF_c$ (at 3 rmsd) in purple (negative)
and green (positive)



Electron density around A1JRF A 1401 (B):

$2mF_o-DF_c$ (at 0.7 rmsd) in gray
 mF_o-DF_c (at 3 rmsd) in purple (negative)
and green (positive)



6.5 Other polymers [i](#)

There are no such residues in this entry.