



Full wwPDB X-ray Structure Validation Report ⓘ

Mar 5, 2026 – 07:41 PM UTC

PDB ID : 9SGB / pdb_00009sgb
Title : PENICILLIN-BINDING PROTEIN 1B (PBP-1B) IN COMPLEX WITH A MONOBACTAM (22)
Authors : Contreras-Martel, C.; Kavas, V.
Deposited on : 2025-08-22
Resolution : 1.52 Å(reported)

This is a Full wwPDB X-ray Structure Validation Report for a publicly released PDB entry.

We welcome your comments at validation@mail.wwpdb.org

A user guide is available at

<https://www.wwpdb.org/validation/2017/XrayValidationReportHelp>

with specific help available everywhere you see the ⓘ symbol.

The types of validation reports are described at

<http://www.wwpdb.org/validation/2017/FAQs#types>.

The following versions of software and data (see [references ⓘ](#)) were used in the production of this report:

MolProbity	:	4-5-2 with Phenix2.0
Mogul	:	2022.3.0, CSD as543be (2022)
Xtriage (Phenix)	:	2.0
EDS	:	3.0
Buster-report	:	wwPDB partial adaption of 1.1.7 (2018)
Percentile statistics	:	20250101.v01 (using entries in the PDB archive January 1st 2025)
CCP4	:	9.0.010 (Gargrove)
Density-Fitness	:	1.0.12
Ideal geometry (proteins)	:	Engh & Huber (2001)
Ideal geometry (DNA, RNA)	:	Parkinson et al. (1996)
Validation Pipeline (wwPDB-VP)	:	2.49

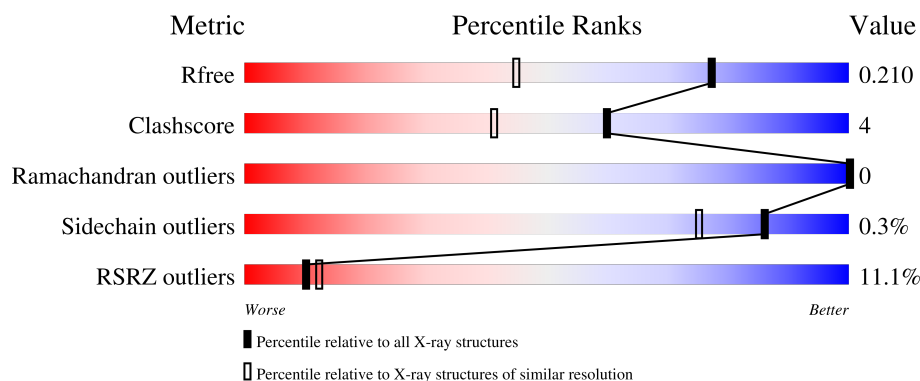
1 Overall quality at a glance

The following experimental techniques were used to determine the structure:

X-RAY DIFFRACTION

The reported resolution of this entry is 1.52 Å.

Percentile scores (ranging between 0-100) for global validation metrics of the entry are shown in the following graphic. The table shows the number of entries on which the scores are based.



Metric	Whole archive (#Entries)	Similar resolution (#Entries, resolution range(Å))
R_{free}	180053	5890 (1.54-1.50)
Clashscore	190562	6116 (1.54-1.50)
Ramachandran outliers	187476	6002 (1.54-1.50)
Sidechain outliers	187428	5999 (1.54-1.50)
RSRZ outliers	180081	5891 (1.54-1.50)

The table below summarises the geometric issues observed across the polymeric chains and their fit to the electron density. The red, orange, yellow and green segments of the lower bar indicate the fraction of residues that contain outliers for ≥ 3 , 2, 1 and 0 types of geometric quality criteria respectively. A grey segment represents the fraction of residues that are not modelled. The numeric value for each fraction is indicated below the corresponding segment, with a dot representing fractions $\leq 5\%$. The upper red bar (where present) indicates the fraction of residues that have poor fit to the electron density. The numeric value is given above the bar.

Mol	Chain	Length	Quality of chain
1	A	494	

2 Entry composition

There are 5 unique types of molecules in this entry. The entry contains 4197 atoms, of which 0 are hydrogens and 0 are deuteriums.

In the tables below, the ZeroOcc column contains the number of atoms modelled with zero occupancy, the AltConf column contains the number of residues with at least one atom in alternate conformation and the Trace column contains the number of residues modelled with at most 2 atoms.

- Molecule 1 is a protein called Penicillin-binding protein 1B.

Mol	Chain	Residues	Atoms					ZeroOcc	AltConf	Trace
			Total	C	N	O	S			
1	A	470	3658	2296	615	731	16	0	8	0

There are 29 discrepancies between the modelled and reference sequences:

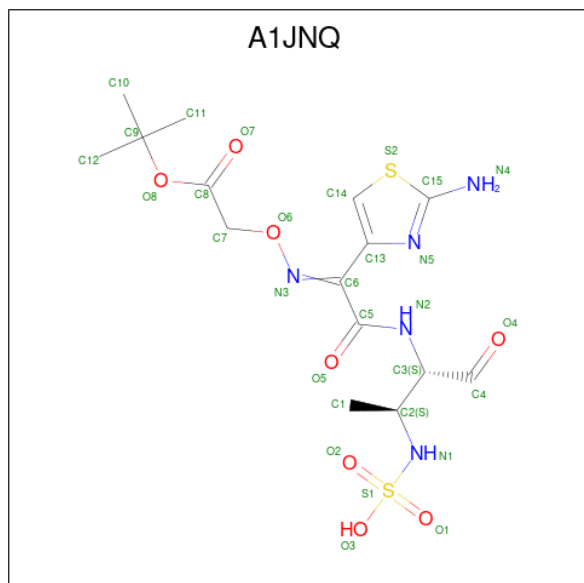
Chain	Residue	Modelled	Actual	Comment	Reference
A	101	ASP	-	expression tag	UNP O70038
A	102	ILE	-	expression tag	UNP O70038
A	103	SER	-	expression tag	UNP O70038
A	104	SER	-	expression tag	UNP O70038
A	105	ILE	-	expression tag	UNP O70038
A	106	SER	-	expression tag	UNP O70038
A	107	GLU	-	expression tag	UNP O70038
A	108	ILE	-	expression tag	UNP O70038
A	109	THR	-	expression tag	UNP O70038
A	110	TYR	-	expression tag	UNP O70038
A	111	SER	-	expression tag	UNP O70038
A	112	ASP	-	expression tag	UNP O70038
A	113	GLY	-	expression tag	UNP O70038
A	114	THR	-	expression tag	UNP O70038
A	115	VAL	-	expression tag	UNP O70038
A	116	ILE	-	expression tag	UNP O70038
A	117	ALA	-	expression tag	UNP O70038
A	118	SER	-	expression tag	UNP O70038
A	119	ILE	-	expression tag	UNP O70038
A	317	GLU	-	expression tag	UNP O70038
A	318	SER	-	expression tag	UNP O70038
A	319	ASP	-	expression tag	UNP O70038
A	320	MET	-	expression tag	UNP O70038
A	321	LEU	-	expression tag	UNP O70038
A	322	ARG	-	expression tag	UNP O70038
A	336	GLN	ARG	conflict	UNP O70038
A	656	GLY	ASN	engineered mutation	UNP O70038

Continued on next page...

Continued from previous page...

Chain	Residue	Modelled	Actual	Comment	Reference
A	686	GLN	ARG	engineered mutation	UNP O70038
A	687	GLN	ARG	engineered mutation	UNP O70038

- Molecule 2 is [(2 {S},3 {S})-3-[[2-(2-azanylidene-1,3-thiazolidin-4-yl)-2-[(2-methylpropan-2-yl)oxy]-2-oxidanylidene-ethoxy]imino-ethanoyl]amino]-4-oxidanylidene-butan-2-yl]sulfamic acid (CCD ID: A1JNQ) (formula: C₁₅H₂₃N₅O₈S₂) (labeled as "Ligand of Interest" by depositor).

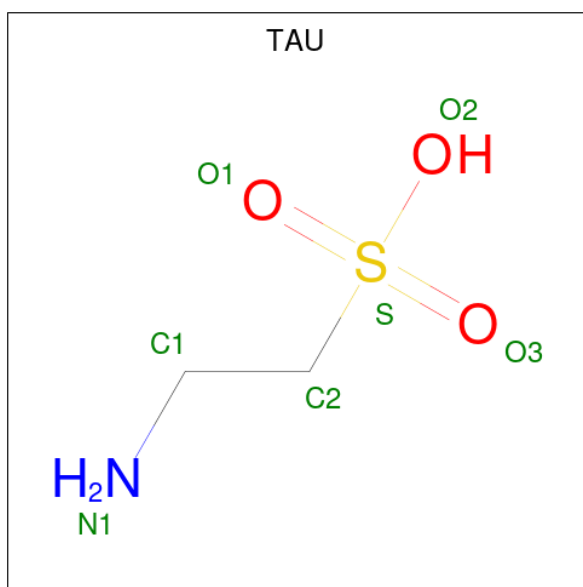


Mol	Chain	Residues	Atoms					ZeroOcc	AltConf
2	A	1	Total	C	N	O	S	0	0
			30	15	5	8	2		

- Molecule 3 is CHLORIDE ION (CCD ID: CL) (formula: Cl).

Mol	Chain	Residues	Atoms		ZeroOcc	AltConf
3	A	25	Total	Cl	0	0
			25	25		

- Molecule 4 is 2-AMINOETHANESULFONIC ACID (CCD ID: TAU) (formula: C₂H₇NO₃S) (labeled as "Ligand of Interest" by depositor).



Mol	Chain	Residues	Atoms					ZeroOcc	AltConf
4	A	1	Total	C	N	O	S	0	0
			7	2	1	3	1		

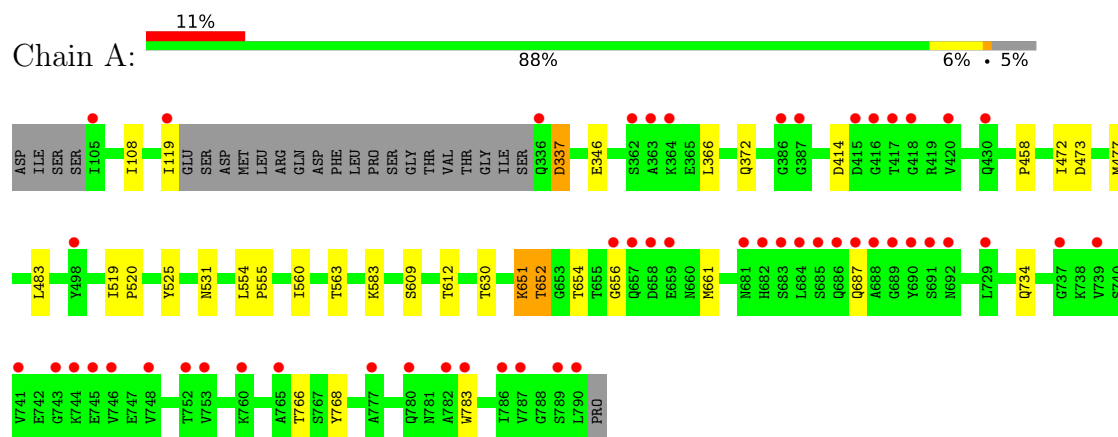
- Molecule 5 is water.

Mol	Chain	Residues	Atoms		ZeroOcc	AltConf
5	A	477	Total	O	0	0
			477	477		

3 Residue-property plots [i](#)

These plots are drawn for all protein, RNA, DNA and oligosaccharide chains in the entry. The first graphic for a chain summarises the proportions of the various outlier classes displayed in the second graphic. The second graphic shows the sequence view annotated by issues in geometry and electron density. Residues are color-coded according to the number of geometric quality criteria for which they contain at least one outlier: green = 0, yellow = 1, orange = 2 and red = 3 or more. A red dot above a residue indicates a poor fit to the electron density ($RSRZ > 2$). Stretches of 2 or more consecutive residues without any outlier are shown as a green connector. Residues present in the sample, but not in the model, are shown in grey.

- Molecule 1: Penicillin-binding protein 1B



4 Data and refinement statistics

Property	Value	Source
Space group	C 2 2 21	Depositor
Cell constants a, b, c, α , β , γ	97.47Å 148.15Å 97.96Å 90.00° 90.00° 90.00°	Depositor
Resolution (Å)	48.74 – 1.52 48.74 – 1.52	Depositor EDS
% Data completeness (in resolution range)	93.4 (48.74-1.52) 93.4 (48.74-1.52)	Depositor EDS
R_{merge}	(Not available)	Depositor
R_{sym}	0.04	Depositor
$\langle I/\sigma(I) \rangle$ ¹	0.96 (at 1.52Å)	Xtriage
Refinement program	REFMAC 5.8.0425	Depositor
R, R_{free}	0.183 , 0.201 0.196 , 0.210	Depositor DCC
R_{free} test set	2020 reflections (1.99%)	wwPDB-VP
Wilson B-factor (Å ²)	35.1	Xtriage
Anisotropy	0.304	Xtriage
Bulk solvent k_{sol} (e/Å ³), B_{sol} (Å ²)	0.37 , 46.9	EDS
L-test for twinning ²	$\langle L \rangle = 0.49$, $\langle L^2 \rangle = 0.33$	Xtriage
Estimated twinning fraction	No twinning to report.	Xtriage
F_o, F_c correlation	0.97	EDS
Total number of atoms	4197	wwPDB-VP
Average B, all atoms (Å ²)	44.0	wwPDB-VP

Xtriage's analysis on translational NCS is as follows: *The largest off-origin peak in the Patterson function is 5.31% of the height of the origin peak. No significant pseudotranslation is detected.*

¹Intensities estimated from amplitudes.

²Theoretical values of $\langle |L| \rangle$, $\langle L^2 \rangle$ for acentric reflections are 0.5, 0.333 respectively for untwinned datasets, and 0.375, 0.2 for perfectly twinned datasets.

5 Model quality [i](#)

5.1 Standard geometry [i](#)

Bond lengths and bond angles in the following residue types are not validated in this section: TAU, CL, A1JNQ

The Z score for a bond length (or angle) is the number of standard deviations the observed value is removed from the expected value. A bond length (or angle) with $|Z| > 5$ is considered an outlier worth inspection. RMSZ is the root-mean-square of all Z scores of the bond lengths (or angles).

Mol	Chain	Bond lengths		Bond angles	
		RMSZ	$\# Z > 5$	RMSZ	$\# Z > 5$
1	A	0.62	0/3755	0.86	3/5096 (0.1%)

There are no bond length outliers.

All (3) bond angle outliers are listed below:

Mol	Chain	Res	Type	Atoms	Z	Observed(°)	Ideal(°)
1	A	337	ASP	CA-CB-CG	6.20	118.80	112.60
1	A	652	THR	CA-CB-OG1	-5.62	101.17	109.60
1	A	414	ASP	CB-CA-C	5.03	117.80	110.26

There are no chirality outliers.

There are no planarity outliers.

5.2 Too-close contacts [i](#)

In the following table, the Non-H and H(model) columns list the number of non-hydrogen atoms and hydrogen atoms in the chain respectively. The H(added) column lists the number of hydrogen atoms added and optimized by MolProbity. The Clashes column lists the number of clashes within the asymmetric unit, whereas Symm-Clashes lists symmetry-related clashes.

Mol	Chain	Non-H	H(model)	H(added)	Clashes	Symm-Clashes
1	A	3658	0	3557	30	0
2	A	30	0	0	2	0
3	A	25	0	0	1	0
4	A	7	0	6	3	0
5	A	477	0	0	4	1
All	All	4197	0	3563	31	1

The all-atom clashscore is defined as the number of clashes found per 1000 atoms (including

hydrogen atoms). The all-atom clashscore for this structure is 4.

All (31) close contacts within the same asymmetric unit are listed below, sorted by their clash magnitude.

Atom-1	Atom-2	Interatomic distance (Å)	Clash overlap (Å)
1:A:583:LYS:HE2	4:A:827:TAU:H2C1	1.67	0.77
1:A:563:THR:OG1	4:A:827:TAU:H2C2	1.85	0.76
1:A:473:ASP:HA	1:A:612:THR:HG21	1.68	0.74
1:A:473:ASP:HA	1:A:612:THR:CG2	2.21	0.70
1:A:651:LYS:HE2	5:A:1155:HOH:O	2.01	0.60
1:A:654:THR:HG23	1:A:661:MET:SD	2.41	0.59
1:A:687:GLN:CD	5:A:910:HOH:O	2.45	0.59
1:A:473:ASP:OD1	1:A:612:THR:HG21	2.03	0.59
1:A:473:ASP:CA	1:A:612:THR:HG21	2.33	0.59
2:A:801:A1JNQ:C12	2:A:801:A1JNQ:C7	2.82	0.57
1:A:108:ILE:CD1	1:A:119:ILE:HD11	2.37	0.54
1:A:583:LYS:CE	4:A:827:TAU:H2C1	2.36	0.54
1:A:656:GLY:HA2	2:A:801:A1JNQ:N3	2.24	0.52
1:A:346:GLU:HG2	3:A:813:CL:CL	2.46	0.52
1:A:337:ASP:HB2	5:A:1236:HOH:O	2.10	0.52
1:A:473:ASP:CB	1:A:612:THR:HG21	2.41	0.50
1:A:554:LEU:N	1:A:555:PRO:HD2	2.27	0.50
1:A:654:THR:HG23	1:A:661:MET:CE	2.44	0.48
1:A:366:LEU:O	1:A:372:GLN:HG3	2.14	0.47
1:A:477:MET:HE1	1:A:483:LEU:HD21	1.98	0.46
1:A:472:ILE:HG22	1:A:612:THR:HG22	1.97	0.45
1:A:609:SER:O	1:A:612:THR:OG1	2.34	0.45
1:A:519:ILE:N	1:A:520:PRO:CD	2.81	0.44
1:A:734:GLN:OE1	1:A:766:THR:HA	2.19	0.43
1:A:768:TYR:CE1	1:A:783:TRP:CD1	3.07	0.42
1:A:531:ASN:N	1:A:531:ASN:HD22	2.15	0.42
1:A:630:THR:HB	1:A:652:THR:HG21	2.02	0.42
1:A:458:PRO:HD2	1:A:560[A]:ILE:HG23	2.02	0.41
1:A:651:LYS:CE	5:A:1155:HOH:O	2.64	0.41
1:A:525:TYR:HB2	1:A:555:PRO:HG3	2.03	0.41
1:A:609:SER:OG	1:A:612:THR:HG23	2.21	0.41

All (1) symmetry-related close contacts are listed below. The label for Atom-2 includes the symmetry operator and encoded unit-cell translations to be applied.

Atom-1	Atom-2	Interatomic distance (Å)	Clash overlap (Å)
5:A:1096:HOH:O	5:A:1096:HOH:O[4_565]	2.13	0.07

5.3 Torsion angles [i](#)

5.3.1 Protein backbone [i](#)

In the following table, the Percentiles column shows the percent Ramachandran outliers of the chain as a percentile score with respect to all X-ray entries followed by that with respect to entries of similar resolution.

The Analysed column shows the number of residues for which the backbone conformation was analysed, and the total number of residues.

Mol	Chain	Analysed	Favoured	Allowed	Outliers	Percentiles	
1	A	474/494 (96%)	463 (98%)	11 (2%)	0	100	100

There are no Ramachandran outliers to report.

5.3.2 Protein sidechains [i](#)

In the following table, the Percentiles column shows the percent sidechain outliers of the chain as a percentile score with respect to all X-ray entries followed by that with respect to entries of similar resolution.

The Analysed column shows the number of residues for which the sidechain conformation was analysed, and the total number of residues.

Mol	Chain	Analysed	Rotameric	Outliers	Percentiles	
1	A	394/408 (97%)	393 (100%)	1 (0%)	86	75

All (1) residues with a non-rotameric sidechain are listed below:

Mol	Chain	Res	Type
1	A	651	LYS

Sometimes sidechains can be flipped to improve hydrogen bonding and reduce clashes. All (6) such sidechains are listed below:

Mol	Chain	Res	Type
1	A	348	GLN
1	A	385	ASN
1	A	444	GLN
1	A	474	GLN
1	A	531	ASN
1	A	635	ASN

5.3.3 RNA ⓘ

There are no RNA molecules in this entry.

5.4 Non-standard residues in protein, DNA, RNA chains ⓘ

There are no non-standard protein/DNA/RNA residues in this entry.

5.5 Carbohydrates ⓘ

There are no oligosaccharides in this entry.

5.6 Ligand geometry ⓘ

Of 27 ligands modelled in this entry, 25 are monoatomic - leaving 2 for Mogul analysis.

In the following table, the Counts columns list the number of bonds (or angles) for which Mogul statistics could be retrieved, the number of bonds (or angles) that are observed in the model and the number of bonds (or angles) that are defined in the Chemical Component Dictionary. The Link column lists molecule types, if any, to which the group is linked. The Z score for a bond length (or angle) is the number of standard deviations the observed value is removed from the expected value. A bond length (or angle) with $|Z| > 2$ is considered an outlier worth inspection. RMSZ is the root-mean-square of all Z scores of the bond lengths (or angles).

Mol	Type	Chain	Res	Link	Bond lengths			Bond angles		
					Counts	RMSZ	# $ Z > 2$	Counts	RMSZ	# $ Z > 2$
2	A1JNQ	A	801	1	29,30,30	1.20	5 (17%)	33,43,43	1.67	8 (24%)
4	TAU	A	827	-	6,6,6	1.42	1 (16%)	7,8,8	1.93	1 (14%)

In the following table, the Chirals column lists the number of chiral outliers, the number of chiral centers analysed, the number of these observed in the model and the number defined in the Chemical Component Dictionary. Similar counts are reported in the Torsion and Rings columns. '-' means no outliers of that kind were identified.

Mol	Type	Chain	Res	Link	Chirals	Torsions	Rings
2	A1JNQ	A	801	1	-	14/32/34/34	0/1/1/1
4	TAU	A	827	-	-	4/4/4/4	-

All (6) bond length outliers are listed below:

Mol	Chain	Res	Type	Atoms	Z	Observed(Å)	Ideal(Å)
4	A	827	TAU	O3-S	3.18	1.54	1.45

Continued on next page...

Continued from previous page...

Mol	Chain	Res	Type	Atoms	Z	Observed(Å)	Ideal(Å)
2	A	801	A1JNQ	C6-C13	-2.94	1.41	1.46
2	A	801	A1JNQ	C15-N5	2.18	1.34	1.31
2	A	801	A1JNQ	C6-C5	2.14	1.52	1.48
2	A	801	A1JNQ	C13-N5	2.12	1.43	1.38
2	A	801	A1JNQ	S1-N1	2.05	1.62	1.59

All (9) bond angle outliers are listed below:

Mol	Chain	Res	Type	Atoms	Z	Observed(°)	Ideal(°)
2	A	801	A1JNQ	C14-S2-C15	4.44	90.76	88.84
4	A	827	TAU	C2-C1-N1	4.26	123.48	112.39
2	A	801	A1JNQ	O4-C4-C3	-3.51	115.58	124.86
2	A	801	A1JNQ	S2-C15-N5	-3.18	112.03	114.54
2	A	801	A1JNQ	S2-C15-N4	3.15	124.66	120.99
2	A	801	A1JNQ	O1-S1-N1	2.66	113.33	108.88
2	A	801	A1JNQ	C9-O8-C8	2.61	126.85	121.77
2	A	801	A1JNQ	C4-C3-N2	-2.22	106.31	109.80
2	A	801	A1JNQ	C14-C13-N5	-2.20	112.41	115.43

There are no chirality outliers.

All (18) torsion outliers are listed below:

Mol	Chain	Res	Type	Atoms
2	A	801	A1JNQ	C2-N1-S1-O3
2	A	801	A1JNQ	C13-C6-N3-O6
2	A	801	A1JNQ	C5-C6-N3-O6
2	A	801	A1JNQ	C6-N3-O6-C7
2	A	801	A1JNQ	C7-C8-O8-C9
2	A	801	A1JNQ	O7-C8-O8-C9
4	A	827	TAU	N1-C1-C2-S
4	A	827	TAU	C1-C2-S-O2
2	A	801	A1JNQ	C2-N1-S1-O1
2	A	801	A1JNQ	C2-N1-S1-O2
4	A	827	TAU	C1-C2-S-O1
4	A	827	TAU	C1-C2-S-O3
2	A	801	A1JNQ	O5-C5-C6-N3
2	A	801	A1JNQ	N2-C5-C6-C13
2	A	801	A1JNQ	O5-C5-C6-C13
2	A	801	A1JNQ	C2-C3-C4-O4
2	A	801	A1JNQ	C8-C7-O6-N3
2	A	801	A1JNQ	N2-C5-C6-N3

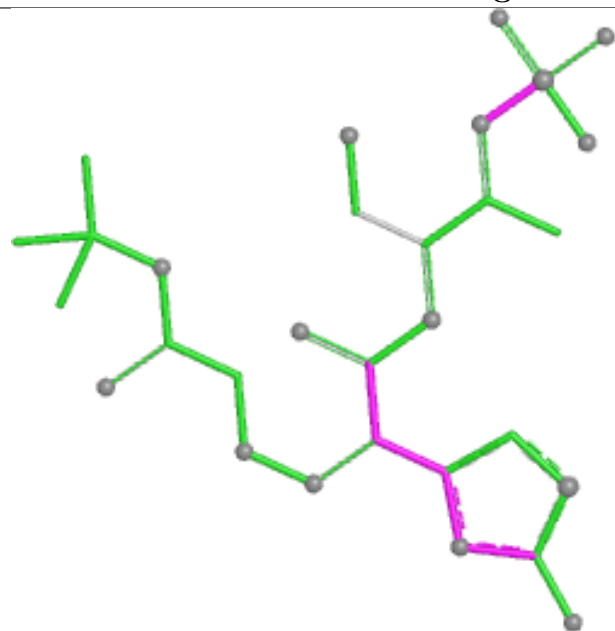
There are no ring outliers.

2 monomers are involved in 5 short contacts:

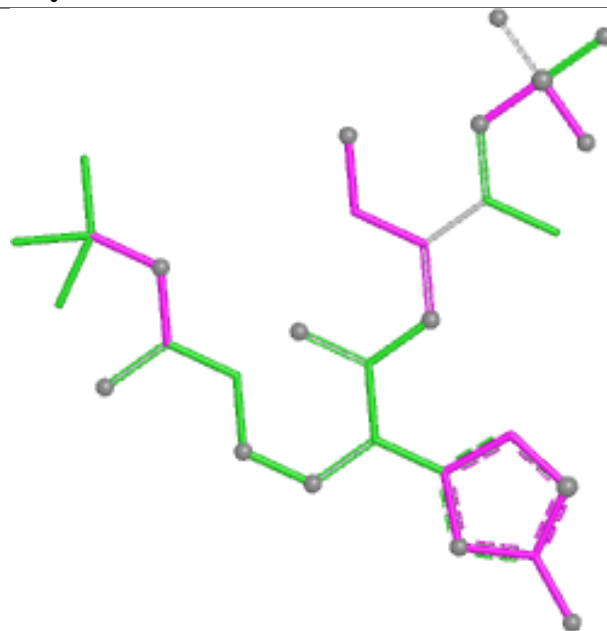
Mol	Chain	Res	Type	Clashes	Symm-Clashes
2	A	801	A1JNQ	2	0
4	A	827	TAU	3	0

The following is a two-dimensional graphical depiction of Mogul quality analysis of bond lengths, bond angles, torsion angles, and ring geometry for all instances of the Ligand of Interest. In addition, ligands with molecular weight > 250 and outliers as shown on the validation Tables will also be included. For torsion angles, if less than 5% of the Mogul distribution of torsion angles is within 10 degrees of the torsion angle in question, then that torsion angle is considered an outlier. Any bond that is central to one or more torsion angles identified as an outlier by Mogul will be highlighted in the graph. For rings, the root-mean-square deviation (RMSD) between the ring in question and similar rings identified by Mogul is calculated over all ring torsion angles. If the average RMSD is greater than 60 degrees and the minimal RMSD between the ring in question and any Mogul-identified rings is also greater than 60 degrees, then that ring is considered an outlier. The outliers are highlighted in purple. The color gray indicates Mogul did not find sufficient equivalents in the CSD to analyse the geometry.

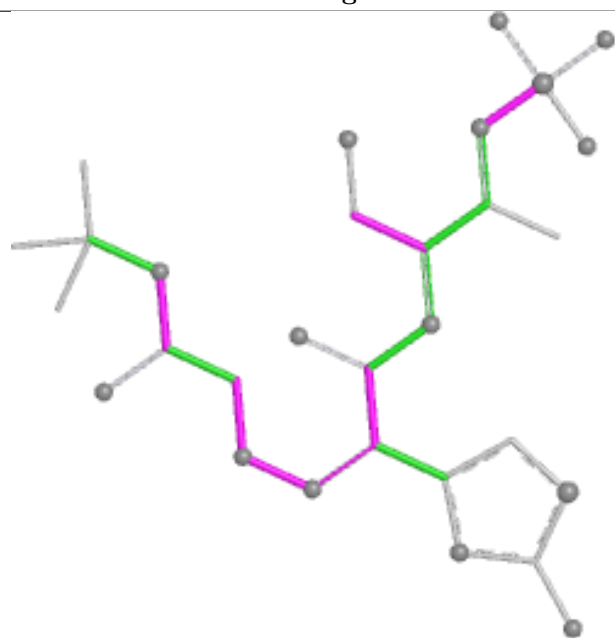
Ligand A1JNQ A 801



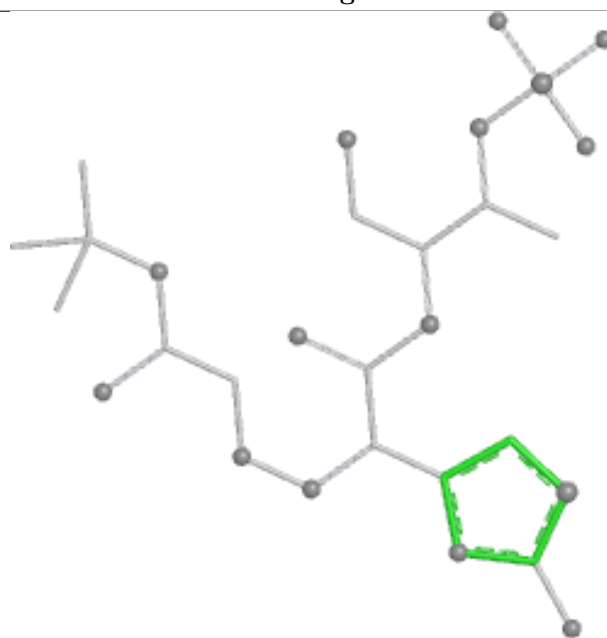
Bond lengths



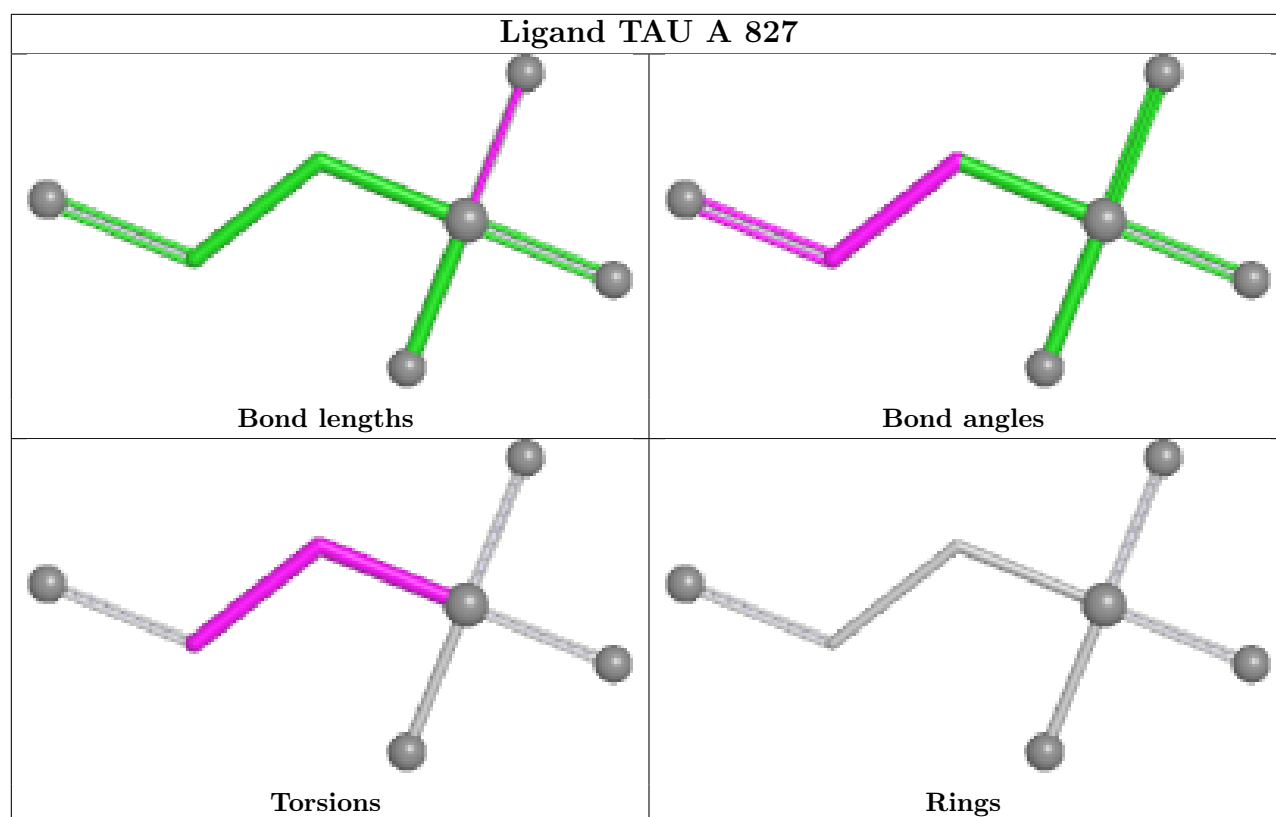
Bond angles



Torsions



Rings



5.7 Other polymers [i](#)

There are no such residues in this entry.

5.8 Polymer linkage issues [i](#)

There are no chain breaks in this entry.

6 Fit of model and data

6.1 Protein, DNA and RNA chains

In the following table, the column labelled ‘#RSRZ> 2’ contains the number (and percentage) of RSRZ outliers, followed by percent RSRZ outliers for the chain as percentile scores relative to all X-ray entries and entries of similar resolution. The OWAB column contains the minimum, median, 95th percentile and maximum values of the occupancy-weighted average B-factor per residue. The column labelled ‘Q< 0.9’ lists the number of (and percentage) of residues with an average occupancy less than 0.9.

Mol	Chain	Analysed	<RSRZ>	#RSRZ>2		OWAB(Å ²)	Q<0.9
1	A	470/494 (95%)	0.70	52 (11%)	10 12	17, 37, 82, 130	8 (1%)

All (52) RSRZ outliers are listed below:

Mol	Chain	Res	Type	RSRZ
1	A	790	LEU	6.1
1	A	689	GLY	5.4
1	A	418	GLY	5.3
1	A	777	ALA	4.7
1	A	656	GLY	4.4
1	A	415	ASP	4.1
1	A	105	ILE	4.0
1	A	658	ASP	3.8
1	A	744	LYS	3.8
1	A	657	GLN	3.5
1	A	685	SER	3.4
1	A	741	VAL	3.3
1	A	387	GLY	3.3
1	A	416	GLY	3.3
1	A	683	SER	3.2
1	A	417	THR	3.1
1	A	786	ILE	3.1
1	A	363	ALA	3.1
1	A	752	THR	3.1
1	A	783	TRP	3.0
1	A	746	VAL	3.0
1	A	692	ASN	3.0
1	A	765	ALA	2.9
1	A	787	VAL	2.9
1	A	659	GLU	2.9
1	A	745	GLU	2.8
1	A	688	ALA	2.7

Continued on next page...

Continued from previous page...

Mol	Chain	Res	Type	RSRZ
1	A	690	TYR	2.6
1	A	737	GLY	2.6
1	A	739	VAL	2.6
1	A	682	HIS	2.5
1	A	362	SER	2.4
1	A	364	LYS	2.4
1	A	686	GLN	2.4
1	A	684	LEU	2.3
1	A	498	TYR	2.3
1	A	760	LYS	2.3
1	A	386	GLY	2.3
1	A	119	ILE	2.3
1	A	691[A]	SER	2.2
1	A	336	GLN	2.2
1	A	782	ALA	2.2
1	A	748	VAL	2.2
1	A	430	GLN	2.2
1	A	780	GLN	2.2
1	A	753	VAL	2.2
1	A	687	GLN	2.1
1	A	729	LEU	2.1
1	A	789	SER	2.1
1	A	743	GLY	2.1
1	A	681	ASN	2.0
1	A	420	VAL	2.0

6.2 Non-standard residues in protein, DNA, RNA chains ⓘ

There are no non-standard protein/DNA/RNA residues in this entry.

6.3 Carbohydrates ⓘ

There are no oligosaccharides in this entry.

6.4 Ligands ⓘ

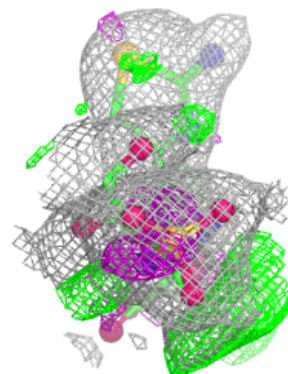
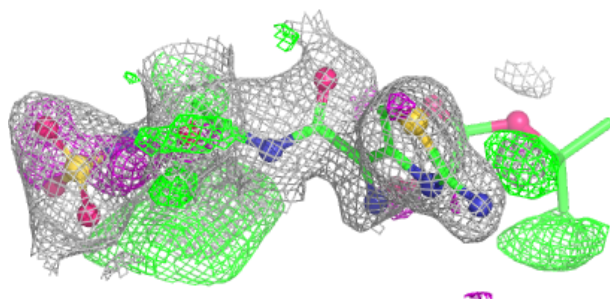
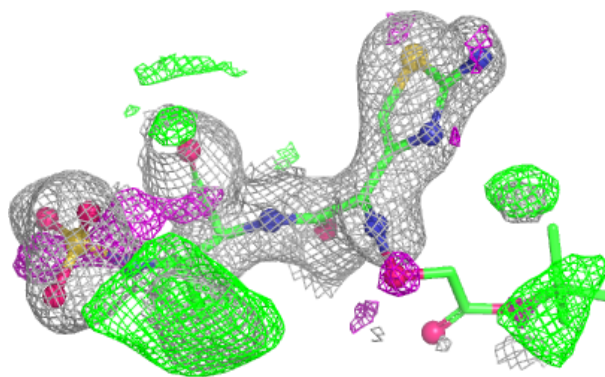
In the following table, the Atoms column lists the number of modelled atoms in the group and the number defined in the chemical component dictionary. The B-factors column lists the minimum, median, 95th percentile and maximum values of B factors of atoms in the group. The column labelled 'Q< 0.9' lists the number of atoms with occupancy less than 0.9.

Mol	Type	Chain	Res	Atoms	RSCC	RSR	B-factors(\AA^2)	Q<0.9
3	CL	A	818	1/1	0.82	0.16	80,80,80,80	0
2	A1JNQ	A	801	30/30	0.85	0.21	34,56,157,178	0
3	CL	A	809	1/1	0.89	0.20	64,64,64,64	0
3	CL	A	805	1/1	0.91	0.18	56,56,56,56	0
4	TAU	A	827	7/7	0.91	0.12	30,34,46,51	0
3	CL	A	807	1/1	0.92	0.20	63,63,63,63	0
3	CL	A	822	1/1	0.93	0.15	74,74,74,74	0
3	CL	A	815	1/1	0.93	0.17	42,42,42,42	0
3	CL	A	803	1/1	0.94	0.29	52,52,52,52	0
3	CL	A	821	1/1	0.94	0.15	57,57,57,57	0
3	CL	A	810	1/1	0.94	0.38	59,59,59,59	0
3	CL	A	804	1/1	0.94	0.15	54,54,54,54	0
3	CL	A	806	1/1	0.95	0.16	62,62,62,62	0
3	CL	A	823	1/1	0.95	0.16	46,46,46,46	0
3	CL	A	825	1/1	0.95	0.12	51,51,51,51	0
3	CL	A	826	1/1	0.95	0.15	58,58,58,58	0
3	CL	A	817	1/1	0.95	0.15	56,56,56,56	0
3	CL	A	824	1/1	0.96	0.14	58,58,58,58	0
3	CL	A	819	1/1	0.96	0.13	52,52,52,52	0
3	CL	A	814	1/1	0.97	0.14	35,35,35,35	0
3	CL	A	808	1/1	0.97	0.13	44,44,44,44	0
3	CL	A	813	1/1	0.97	0.13	38,38,38,38	0
3	CL	A	820	1/1	0.98	0.10	44,44,44,44	0
3	CL	A	802	1/1	0.98	0.08	39,39,39,39	0
3	CL	A	811	1/1	0.98	0.14	43,43,43,43	0
3	CL	A	812	1/1	0.98	0.13	36,36,36,36	0
3	CL	A	816	1/1	0.99	0.05	29,29,29,29	1

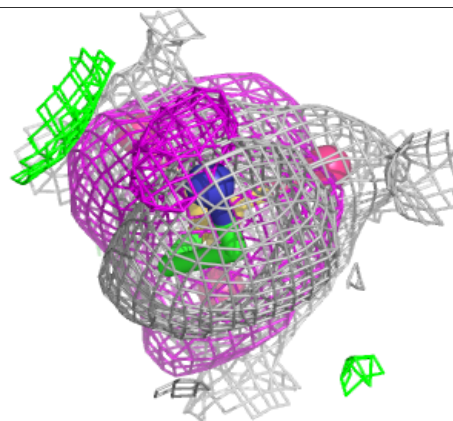
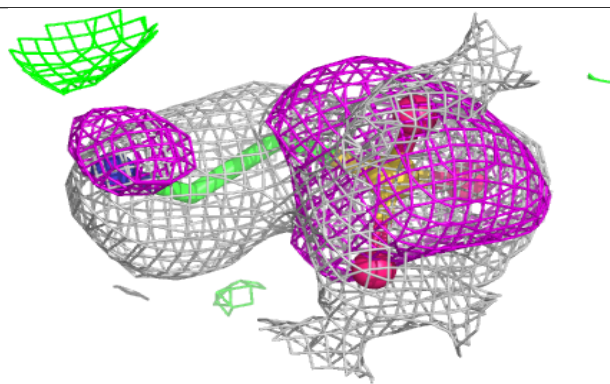
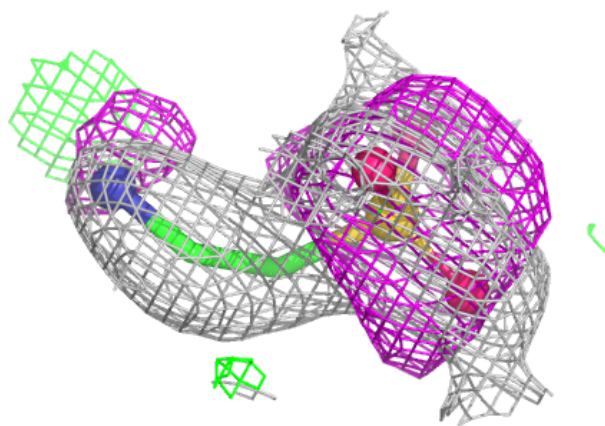
The following is a graphical depiction of the model fit to experimental electron density of all instances of the Ligand of Interest. In addition, ligands with molecular weight > 250 and outliers as shown on the geometry validation Tables will also be included. Each fit is shown from different orientation to approximate a three-dimensional view.

Electron density around A1JNQ A 801:

$2mF_o-DF_c$ (at 0.7 rmsd) in gray
 mF_o-DF_c (at 3 rmsd) in purple (negative)
and green (positive)

**Electron density around TAU A 827:**

$2mF_o-DF_c$ (at 0.7 rmsd) in gray
 mF_o-DF_c (at 3 rmsd) in purple (negative)
and green (positive)



6.5 Other polymers [i](#)

There are no such residues in this entry.