



Full wwPDB EM Validation Report ⓘ

Apr 5, 2026 – 11:27 PM UTC

PDB ID : 9RDK / pdb_00009rdk
EMDB ID : EMD-53937
Title : Cryo-EM structure of the human SAGA co-activator complex
Authors : Damilot, M.; Ben-Shem, A.; Papai, G.
Deposited on : 2025-06-03
Resolution : 2.41 Å(reported)

This is a Full wwPDB EM Validation Report for a publicly released PDB entry.

We welcome your comments at validation@mail.wwpdb.org

A user guide is available at

<https://www.wwpdb.org/validation/2017/EMValidationReportHelp>

with specific help available everywhere you see the ⓘ symbol.

The types of validation reports are described at

<http://www.wwpdb.org/validation/2017/FAQs#types>.

The following versions of software and data (see [references ⓘ](#)) were used in the production of this report:

EMDB validation analysis : 0.0.1.dev132
MolProbity : 4-5-2 with Phenix2.0
Percentile statistics : 20250101.v01 (using entries in the PDB archive January 1st 2025)
EM percentile statistics : 202505.v01 (Using data in the EMDB archive up until May 2025)
MapQ : 1.9.13
Ideal geometry (proteins) : Engh & Huber (2001)
Ideal geometry (DNA, RNA) : Parkinson et al. (1996)
Validation Pipeline (wwPDB-VP) : 2.49

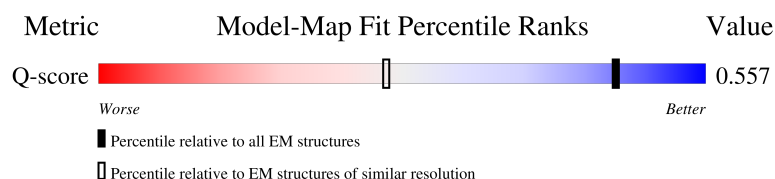
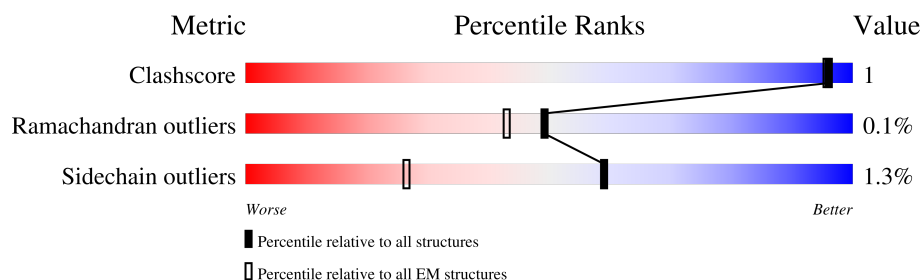
1 Overall quality at a glance

The following experimental techniques were used to determine the structure:

ELECTRON MICROSCOPY

The reported resolution of this entry is 2.41 Å.

Percentile scores (ranging between 0-100) for global validation metrics of the entry are shown in the following graphic. The table shows the number of entries on which the scores are based.





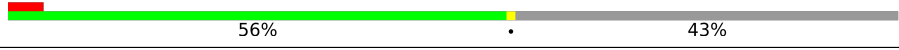



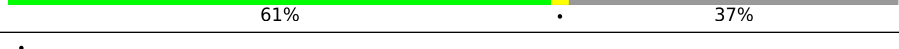

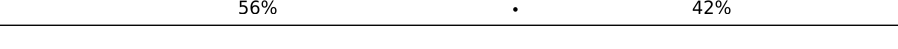
| Metric | Whole archive (#Entries) | EM structures (#Entries) | Similar EM resolution (#Entries, resolution range(Å)) |
|-----------------------|-----------------------------|-----------------------------|--|
| Clashscore | 229148 | 23984 | - |
| Ramachandran outliers | 224038 | 23583 | - |
| Sidechain outliers | 223484 | 23102 | - |
| Q-score | - | 25397 | 5662 (1.92 - 2.91) |

The table below summarises the geometric issues observed across the polymeric chains and their fit to the map. The red, orange, yellow and green segments of the bar indicate the fraction of residues that contain outliers for ≥ 3 , 2, 1 and 0 types of geometric quality criteria respectively. A grey segment represents the fraction of residues that are not modelled. The numeric value for each fraction is indicated below the corresponding segment, with a dot representing fractions $\leq 5\%$. The upper red bar (where present) indicates the fraction of residues that have poor fit to the EM map (all-atom inclusion $< 40\%$). The numeric value is given above the bar.

| Mol | Chain | Length | Quality of chain |
|-----|-------|--------|------------------|
| 1 | E | 251 | |
| 2 | N | 892 | |
| 3 | L | 589 | |
| 4 | A | 1217 | |

Continued on next page...

Continued from previous page...

| Mol | Chain | Length | Quality of chain |
|-----|-------|--------|---|
| 5 | C | 3859 |  80%16% |
| 6 | D | 414 |  42%56% |
| 7 | G | 161 |  56%43% |
| 8 | H | 218 |  44%55% |
| 9 | I | 317 |  70%28% |
| 10 | J | 335 |  53%46% |
| 11 | K | 622 |  61%37% |
| 12 | M | 779 |  48%50% |
| 13 | B | 86 |  56%42% |

2 Entry composition

There are 13 unique types of molecules in this entry. The entry contains 54084 atoms, of which 0 are hydrogens and 0 are deuteriums.

In the tables below, the AltConf column contains the number of residues with at least one atom in alternate conformation and the Trace column contains the number of residues modelled with at most 2 atoms.

- Molecule 1 is a protein called Transcription initiation factor TFIID subunit 9B.

| Mol | Chain | Residues | Atoms | | | | | AltConf | Trace |
|-----|-------|----------|-------|-----|-----|-----|---|---------|-------|
| 1 | E | 124 | Total | C | N | O | S | 0 | 0 |
| | | | 995 | 635 | 175 | 180 | 5 | | |

- Molecule 2 is a protein called Ataxin-7.

| Mol | Chain | Residues | Atoms | | | | | AltConf | Trace |
|-----|-------|----------|-------|-----|----|----|---|---------|-------|
| 2 | N | 53 | Total | C | N | O | S | 0 | 0 |
| | | | 435 | 274 | 84 | 73 | 4 | | |

- Molecule 3 is a protein called TAF5-like RNA polymerase II p300/CBP-associated factor-associated factor 65 kDa subunit 5L.

| Mol | Chain | Residues | Atoms | | | | | AltConf | Trace |
|-----|-------|----------|-------|------|-----|-----|----|---------|-------|
| 3 | L | 540 | Total | C | N | O | S | 0 | 0 |
| | | | 4279 | 2691 | 739 | 828 | 21 | | |

- Molecule 4 is a protein called Splicing factor 3B subunit 3.

| Mol | Chain | Residues | Atoms | | | | | AltConf | Trace |
|-----|-------|----------|-------|------|------|------|----|---------|-------|
| 4 | A | 1168 | Total | C | N | O | S | 0 | 0 |
| | | | 9158 | 5817 | 1558 | 1738 | 45 | | |

- Molecule 5 is a protein called Transformation/transcription domain-associated protein.

| Mol | Chain | Residues | Atoms | | | | | AltConf | Trace |
|-----|-------|----------|-------|-------|------|------|-----|---------|-------|
| 5 | C | 3258 | Total | C | N | O | S | 0 | 0 |
| | | | 26232 | 16878 | 4516 | 4650 | 188 | | |

- Molecule 6 is a protein called STAGA complex 65 subunit gamma.

| Mol | Chain | Residues | Atoms | | | | | AltConf | Trace |
|-----|-------|----------|-------|-----|-----|-----|---|---------|-------|
| 6 | D | 182 | Total | C | N | O | S | 0 | 0 |
| | | | 1493 | 945 | 268 | 274 | 6 | | |

- Molecule 7 is a protein called Transcription initiation factor TFIID subunit 12.

| Mol | Chain | Residues | Atoms | | | | | AltConf | Trace |
|-----|-------|----------|-------|-----|-----|-----|---|---------|-------|
| 7 | G | 91 | Total | C | N | O | S | 0 | 0 |
| | | | 744 | 463 | 132 | 145 | 4 | | |

- Molecule 8 is a protein called Transcription initiation factor TFIID subunit 10.

| Mol | Chain | Residues | Atoms | | | | | AltConf | Trace |
|-----|-------|----------|-------|-----|-----|-----|---|---------|-------|
| 8 | H | 99 | Total | C | N | O | S | 0 | 0 |
| | | | 784 | 501 | 128 | 151 | 4 | | |

- Molecule 9 is a protein called Transcription initiation protein SPT3 homolog.

| Mol | Chain | Residues | Atoms | | | | | AltConf | Trace |
|-----|-------|----------|-------|------|-----|-----|----|---------|-------|
| 9 | I | 228 | Total | C | N | O | S | 0 | 0 |
| | | | 1858 | 1169 | 337 | 338 | 14 | | |

- Molecule 10 is a protein called Transcriptional adapter 1.

| Mol | Chain | Residues | Atoms | | | | | AltConf | Trace |
|-----|-------|----------|-------|-----|-----|-----|---|---------|-------|
| 10 | J | 181 | Total | C | N | O | S | 0 | 0 |
| | | | 1474 | 927 | 270 | 272 | 5 | | |

- Molecule 11 is a protein called TAF6-like RNA polymerase II p300/CBP-associated factor-associated factor 65 kDa subunit 6L.

| Mol | Chain | Residues | Atoms | | | | | AltConf | Trace |
|-----|-------|----------|-------|------|-----|-----|----|---------|-------|
| 11 | K | 389 | Total | C | N | O | S | 0 | 0 |
| | | | 3065 | 1956 | 537 | 559 | 13 | | |

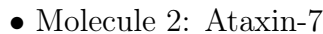
- Molecule 12 is a protein called Transcription factor SPT20 homolog.

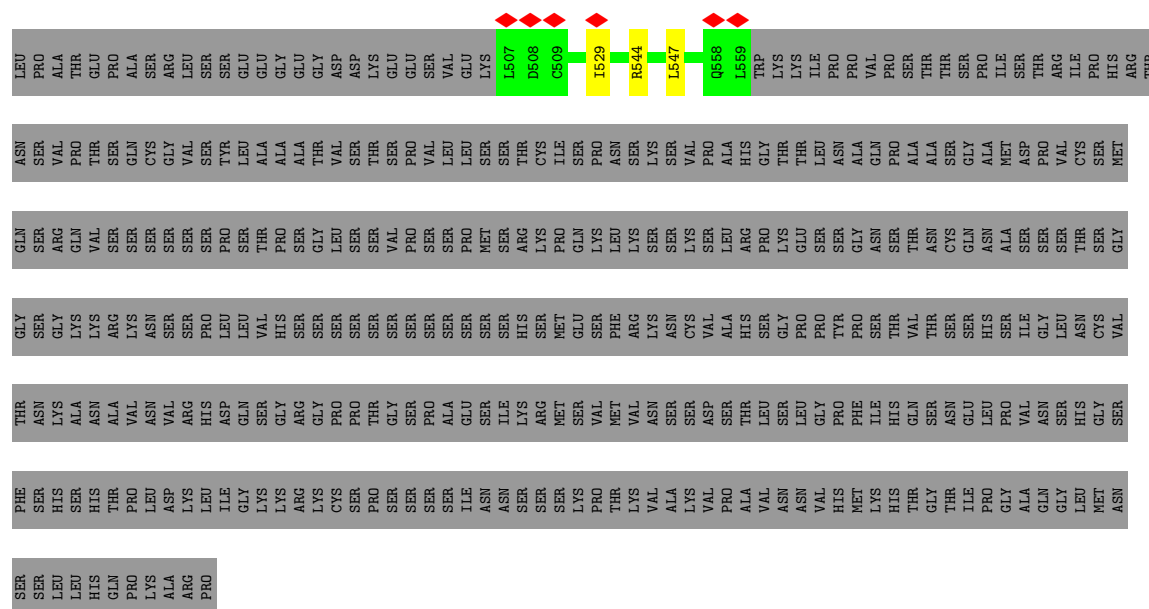
| Mol | Chain | Residues | Atoms | | | | | AltConf | Trace |
|-----|-------|----------|-------|------|-----|-----|----|---------|-------|
| 12 | M | 388 | Total | C | N | O | S | 0 | 0 |
| | | | 3138 | 1971 | 548 | 596 | 23 | | |

- Molecule 13 is a protein called Splicing factor 3B subunit 5.

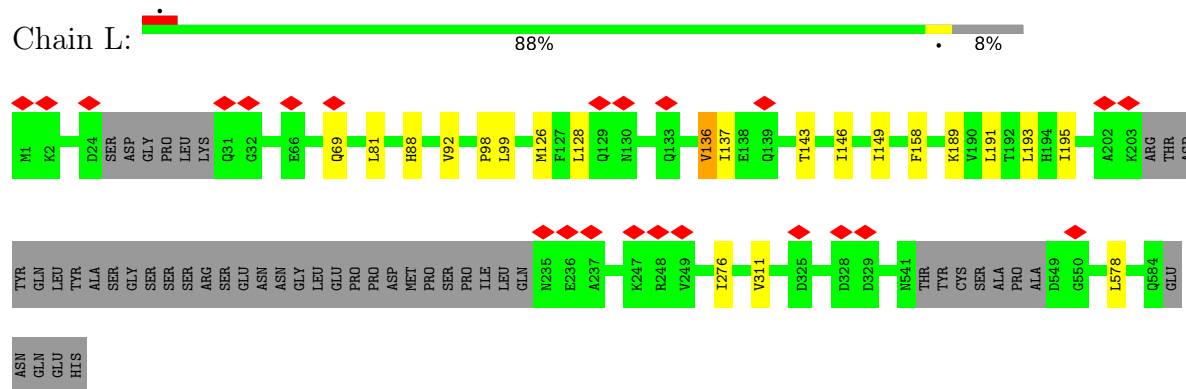
| Mol | Chain | Residues | Atoms | | | | | AltConf | Trace |
|-----|-------|----------|-------|-----|----|----|---|---------|-------|
| 13 | B | 50 | Total | C | N | O | S | 0 | 0 |
| | | | 429 | 275 | 74 | 76 | 4 | | |

- Molecule 1: Transcription initiation factor TFIID subunit 9B

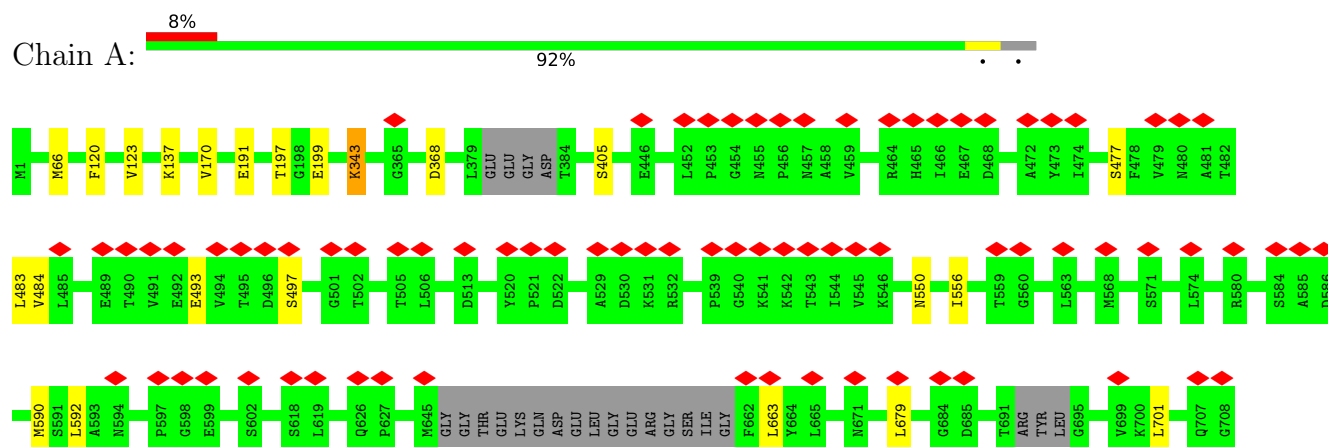


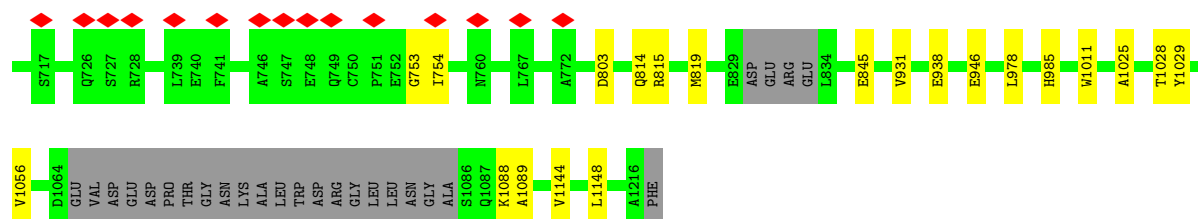


- Molecule 3: TAF5-like RNA polymerase II p300/CBP-associated factor-associated factor 65 kDa subunit 5L



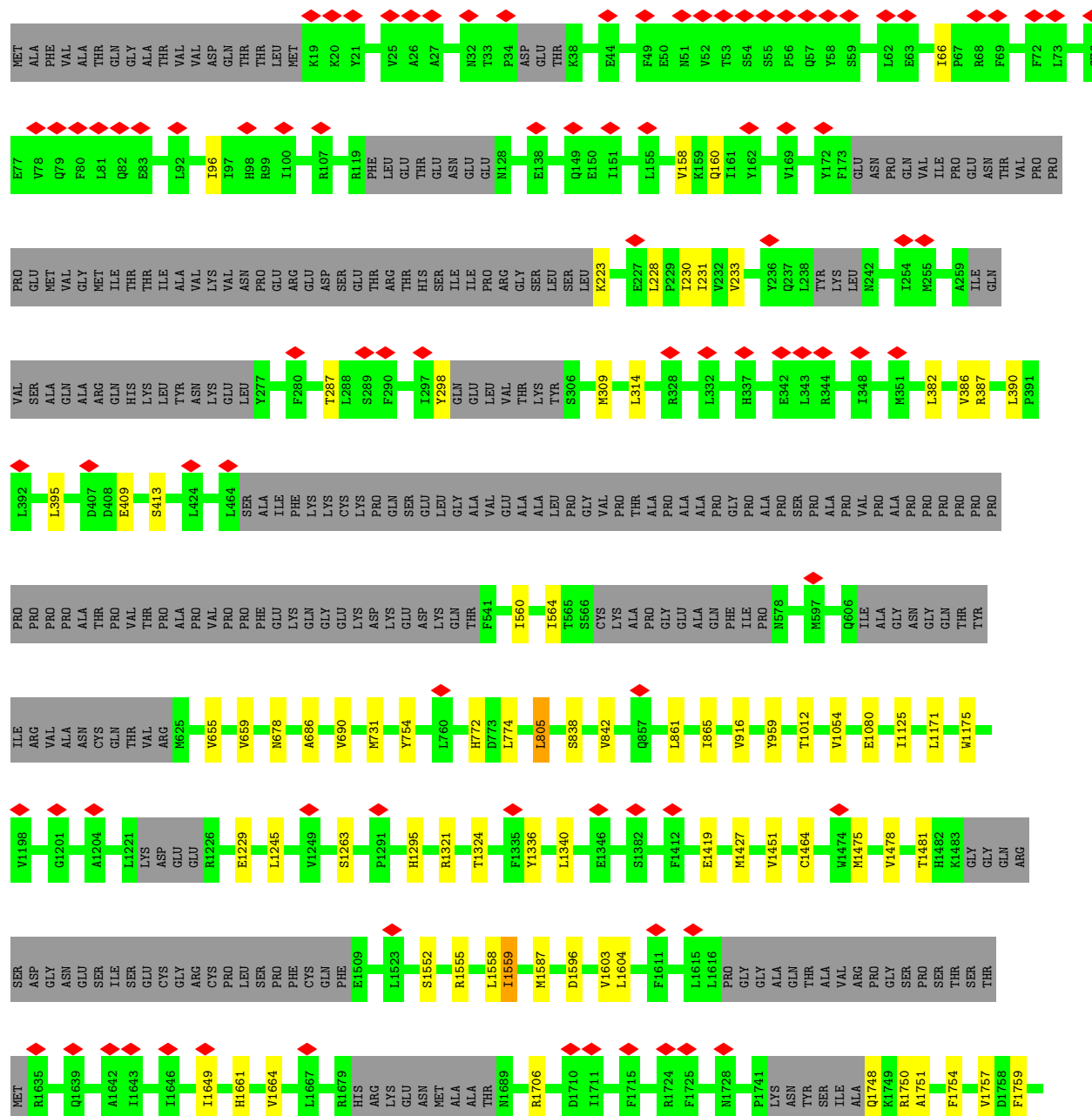
- Molecule 4: Splicing factor 3B subunit 3



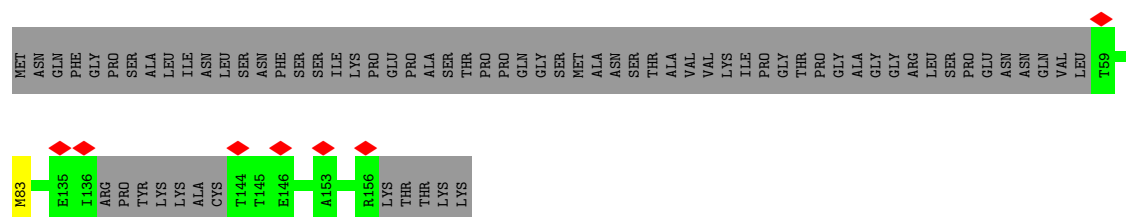


• Molecule 5: Transformation/transcription domain-associated protein

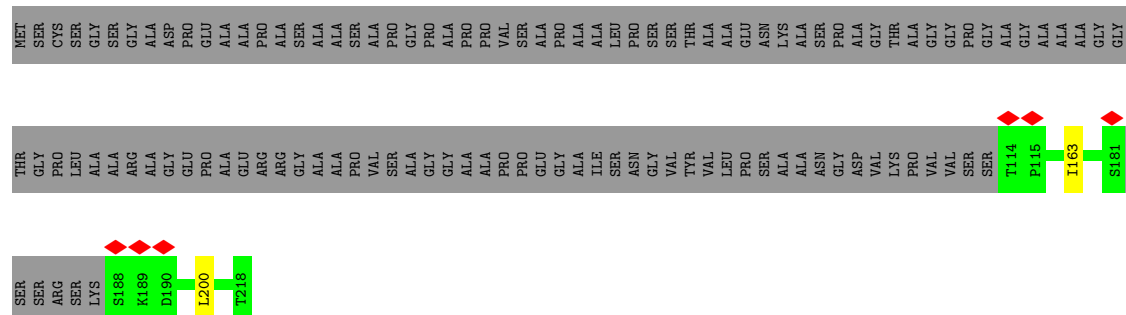
Chain C: 80% 16%



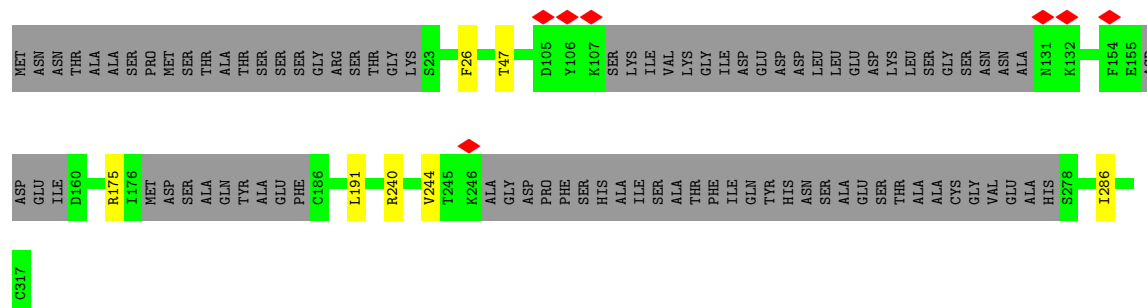
- Molecule 7: Transcription initiation factor TFIID subunit 12



- Molecule 8: Transcription initiation factor TFIID subunit 10



- Molecule 9: Transcription initiation protein SPT3 homolog



LEU
LEU
GLN
GLN
LEU
ILE
MET
PRO
ASN
GLY
GLY
SER
GLY
SER
ILE
PHE
THR
ASN
MET
THR
LEU
LEU
GLN
GLN
SER
GLN
ALA
GLN
GLN
GLN
GLN
LEU
SER
GLN
GLN
PHE
GLY
SER
THR
PRO
ALA
PRO
GLN
GLN
GLN
PRO
THR
THR
THR
CYS
CYS
SER
GLN
PRO
GLN
GLN
GLN
PRO
PHE
GLN
GLN
PRO
GLY
LEU
SER
SER
GLN
GLY
SER
PHE
SER
GLN
ALA
LEU
SER
PHE
ALA
GLN
GLN
HIS

ALA
ALA
VAL
VAL
ILE
MET
ALA
ASN
ALA
LEU
THR
GLY
VAL
VAL
GLY
THR
SER
PHE
MET
GLN
SER
GLN
GLN
ALA
ALA
VAL
LEU
SER
GLN
GLN
LEU
GLN
PHE
GLY
SER
LYS
SER
ALA
PRO
GLN
ASN
GLN
MET
ARG
PRO
GLY
GLY
GLN
THR
SER
PRO
LEU
THR
THR
PRO
GLN
GLN
ARG
PHE
GLN
GLN
GLN
GLY
GLY
THR
GLN
ILE
GLN
GLN
GLN
LEU
ARG
PHE
LEU
GLN
HIS

GLN
MET
ALA
MET
ALA
ALA
ALA
GLN
THR
ALA
GLN
LEU
HIS
HIS
HIS
ARG
THR
THR
SER
GLN
GLN
SER
LYS
SER
SER
LYS
MET
LYS
ARG
GLY
THR
PRO
THR
THR
THR
PRO
LYS
PHE

- Molecule 13: Splicing factor 3B subunit 5



MET
THR
ASP
ARG
TYR
THR
ILE
HIS
SER
GLN
LEU
GLY
HIS
LEU
GLN
SER
LYS
TYR
ILE
GLY
THR
GLY
HIS
ALA
ASP
T26
V33
P75
CYS
GLY
PRO
PRO
ALA
ASP
LYS
PRO
GLU
ASN

4 Experimental information

| Property | Value | Source |
|--------------------------------------|---|-----------|
| EM reconstruction method | SINGLE PARTICLE | Depositor |
| Imposed symmetry | POINT, Not provided | |
| Number of particles used | 272167 | Depositor |
| Resolution determination method | FSC 0.143 CUT-OFF | Depositor |
| CTF correction method | PHASE FLIPPING AND AMPLITUDE CORRECTION | Depositor |
| Microscope | TFS KRIOS | Depositor |
| Voltage (kV) | 300 | Depositor |
| Electron dose ($e^-/\text{\AA}^2$) | 40 | Depositor |
| Minimum defocus (nm) | 1200 | Depositor |
| Maximum defocus (nm) | 3500 | Depositor |
| Magnification | Not provided | |
| Image detector | FEI FALCON IV (4k x 4k) | Depositor |
| Maximum map value | 29.833 | Depositor |
| Minimum map value | -0.813 | Depositor |
| Average map value | 0.056 | Depositor |
| Map value standard deviation | 0.638 | Depositor |
| Recommended contour level | 3 | Depositor |
| Map size (Å) | 408.0, 408.0, 408.0 | wwPDB |
| Map dimensions | 408, 408, 408 | wwPDB |
| Map angles (°) | 90.0, 90.0, 90.0 | wwPDB |
| Pixel spacing (Å) | 1.0, 1.0, 1.0 | Depositor |

5 Model quality

5.1 Standard geometry

The Z score for a bond length (or angle) is the number of standard deviations the observed value is removed from the expected value. A bond length (or angle) with $|Z| > 5$ is considered an outlier worth inspection. RMSZ is the root-mean-square of all Z scores of the bond lengths (or angles).

| Mol | Chain | Bond lengths | | Bond angles | |
|-----|-------|--------------|-------------|-------------|-----------------|
| | | RMSZ | $\# Z > 5$ | RMSZ | $\# Z > 5$ |
| 1 | E | 0.28 | 0/1018 | 0.52 | 0/1384 |
| 2 | N | 0.31 | 0/448 | 0.61 | 0/604 |
| 3 | L | 0.32 | 0/4366 | 0.62 | 0/5920 |
| 4 | A | 0.30 | 0/9345 | 0.61 | 3/12680 (0.0%) |
| 5 | C | 0.34 | 0/26775 | 0.66 | 12/36210 (0.0%) |
| 6 | D | 0.30 | 0/1528 | 0.58 | 0/2068 |
| 7 | G | 0.27 | 0/753 | 0.52 | 0/1013 |
| 8 | H | 0.29 | 0/800 | 0.57 | 0/1082 |
| 9 | I | 0.33 | 0/1881 | 0.63 | 0/2518 |
| 10 | J | 0.26 | 0/1506 | 0.53 | 0/2039 |
| 11 | K | 0.30 | 0/3129 | 0.59 | 0/4251 |
| 12 | M | 0.32 | 0/3196 | 0.62 | 2/4316 (0.0%) |
| 13 | B | 0.31 | 0/441 | 0.55 | 0/594 |
| All | All | 0.32 | 0/55186 | 0.63 | 17/74679 (0.0%) |

Chiral center outliers are detected by calculating the chiral volume of a chiral center and verifying if the center is modelled as a planar moiety or with the opposite hand. A planarity outlier is detected by checking planarity of atoms in a peptide group, atoms in a mainchain group or atoms of a sidechain that are expected to be planar.

| Mol | Chain | #Chirality outliers | #Planarity outliers |
|-----|-------|---------------------|---------------------|
| 1 | E | 0 | 1 |
| 4 | A | 0 | 1 |
| 5 | C | 0 | 5 |
| 6 | D | 0 | 1 |
| 9 | I | 0 | 1 |
| 11 | K | 0 | 1 |
| All | All | 0 | 10 |

There are no bond length outliers.

All (17) bond angle outliers are listed below:

| Mol | Chain | Res | Type | Atoms | Z | Observed(°) | Ideal(°) |
|-----|-------|------|------|----------|------|-------------|----------|
| 5 | C | 160 | GLN | CA-CB-CG | 6.50 | 127.11 | 114.10 |
| 5 | C | 2015 | LYS | CB-CG-CD | 6.03 | 125.17 | 111.30 |
| 12 | M | 22 | ARG | CA-CB-CG | 5.79 | 125.68 | 114.10 |
| 4 | A | 343 | LYS | CA-C-N | 5.60 | 136.02 | 125.66 |
| 4 | A | 343 | LYS | C-N-CA | 5.60 | 136.02 | 125.66 |
| 5 | C | 1947 | ARG | CA-CB-CG | 5.53 | 125.15 | 114.10 |
| 5 | C | 1947 | ARG | CB-CG-CD | 5.52 | 123.99 | 111.30 |
| 5 | C | 2332 | LYS | CB-CG-CD | 5.49 | 123.92 | 111.30 |
| 5 | C | 309 | MET | CB-CG-SD | 5.49 | 129.16 | 112.70 |
| 5 | C | 1229 | GLU | CA-CB-CG | 5.35 | 124.81 | 114.10 |
| 5 | C | 1419 | GLU | CB-CG-CD | 5.29 | 121.58 | 112.60 |
| 5 | C | 2015 | LYS | CA-CB-CG | 5.27 | 124.65 | 114.10 |
| 5 | C | 3306 | MET | CA-CB-CG | 5.24 | 124.57 | 114.10 |
| 12 | M | 305 | GLU | CB-CG-CD | 5.12 | 121.30 | 112.60 |
| 5 | C | 1941 | MET | CB-CG-SD | 5.10 | 128.01 | 112.70 |
| 5 | C | 3116 | GLU | CB-CG-CD | 5.09 | 121.26 | 112.60 |
| 4 | A | 191 | GLU | CB-CG-CD | 5.05 | 121.19 | 112.60 |

There are no chirality outliers.

All (10) planarity outliers are listed below:

| Mol | Chain | Res | Type | Group |
|-----|-------|------|------|-----------|
| 4 | A | 343 | LYS | Peptide |
| 5 | C | 1759 | PHE | Peptide |
| 5 | C | 2302 | ARG | Sidechain |
| 5 | C | 2668 | GLN | Peptide |
| 5 | C | 3111 | LYS | Peptide |
| 5 | C | 772 | HIS | Peptide |
| 6 | D | 74 | ARG | Sidechain |
| 1 | E | 128 | ARG | Peptide |
| 9 | I | 175 | ARG | Sidechain |
| 11 | K | 7 | ARG | Sidechain |

5.2 Too-close contacts [i](#)

In the following table, the Non-H and H(model) columns list the number of non-hydrogen atoms and hydrogen atoms in the chain respectively. The H(added) column lists the number of hydrogen atoms added and optimized by MolProbity. The Clashes column lists the number of clashes within the asymmetric unit, whereas Symm-Clashes lists symmetry-related clashes.

| Mol | Chain | Non-H | H(model) | H(added) | Clashes | Symm-Clashes |
|-----|-------|-------|----------|----------|---------|--------------|
| 1 | E | 995 | 0 | 1018 | 0 | 0 |

Continued on next page...

Continued from previous page...

| Mol | Chain | Non-H | H(model) | H(added) | Clashes | Symm-Clashes |
|-----|-------|-------|----------|----------|---------|--------------|
| 2 | N | 435 | 0 | 412 | 2 | 0 |
| 3 | L | 4279 | 0 | 4177 | 11 | 0 |
| 4 | A | 9158 | 0 | 9102 | 15 | 0 |
| 5 | C | 26232 | 0 | 26838 | 55 | 0 |
| 6 | D | 1493 | 0 | 1459 | 4 | 0 |
| 7 | G | 744 | 0 | 740 | 1 | 0 |
| 8 | H | 784 | 0 | 781 | 2 | 0 |
| 9 | I | 1858 | 0 | 1903 | 2 | 0 |
| 10 | J | 1474 | 0 | 1448 | 2 | 0 |
| 11 | K | 3065 | 0 | 3081 | 4 | 0 |
| 12 | M | 3138 | 0 | 3156 | 6 | 0 |
| 13 | B | 429 | 0 | 407 | 0 | 0 |
| All | All | 54084 | 0 | 54522 | 97 | 0 |

The all-atom clashscore is defined as the number of clashes found per 1000 atoms (including hydrogen atoms). The all-atom clashscore for this structure is 1.

All (97) close contacts within the same asymmetric unit are listed below, sorted by their clash magnitude.

| Atom-1 | Atom-2 | Interatomic distance (Å) | Clash overlap (Å) |
|-------------------|-------------------|--------------------------|-------------------|
| 5:C:1908:LEU:HD11 | 5:C:1920:VAL:HG22 | 1.49 | 0.92 |
| 4:A:663:LEU:HD23 | 4:A:679:LEU:HD12 | 1.61 | 0.83 |
| 3:L:143:THR:HG21 | 3:L:149:ILE:HD13 | 1.74 | 0.69 |
| 5:C:2925:VAL:HG11 | 5:C:3667:THR:HG21 | 1.74 | 0.69 |
| 5:C:1427:MET:HE2 | 5:C:1451:VAL:HG21 | 1.75 | 0.67 |
| 5:C:2350:ILE:HG23 | 5:C:2354:LEU:HD23 | 1.77 | 0.67 |
| 11:K:366:VAL:HG13 | 11:K:444:LEU:HD13 | 1.80 | 0.64 |
| 5:C:386:VAL:HG13 | 5:C:390:LEU:HD11 | 1.79 | 0.62 |
| 12:M:128:LEU:HD22 | 12:M:135:ILE:HD11 | 1.83 | 0.61 |
| 5:C:1604:LEU:HD12 | 5:C:1649:ILE:HD11 | 1.86 | 0.56 |
| 3:L:98:PRO:HB2 | 3:L:195:ILE:HD12 | 1.87 | 0.56 |
| 5:C:1559:ILE:HD11 | 5:C:1596:ASP:OD2 | 2.05 | 0.56 |
| 6:D:186:ALA:HB2 | 8:H:163:ILE:HD11 | 1.88 | 0.56 |
| 6:D:178:VAL:HG13 | 8:H:200:LEU:HD22 | 1.89 | 0.55 |
| 5:C:382:LEU:O | 5:C:386:VAL:HG12 | 2.08 | 0.54 |
| 11:K:247:LEU:HD12 | 11:K:296:ILE:HG21 | 1.90 | 0.54 |
| 4:A:1028:THR:HG23 | 4:A:1029:TYR:CD2 | 2.44 | 0.53 |
| 5:C:754:TYR:CE1 | 5:C:805:LEU:HD12 | 2.44 | 0.52 |
| 5:C:1478:VAL:HA | 5:C:1481:THR:HG22 | 1.92 | 0.52 |
| 3:L:88:HIS:O | 3:L:92:VAL:HG12 | 2.09 | 0.52 |
| 5:C:1905:PHE:O | 5:C:1909:LEU:HD22 | 2.10 | 0.52 |

Continued on next page...

Continued from previous page...

| Atom-1 | Atom-2 | Interatomic distance (Å) | Clash overlap (Å) |
|-------------------|-------------------|--------------------------|-------------------|
| 2:N:547:LEU:HD23 | 12:M:127:LEU:HD12 | 1.92 | 0.52 |
| 5:C:560:ILE:O | 5:C:564:ILE:HD12 | 2.09 | 0.52 |
| 4:A:1011:TRP:HB2 | 4:A:1025:ALA:HB3 | 1.92 | 0.51 |
| 5:C:1171:LEU:HD12 | 5:C:1175:TRP:CZ3 | 2.46 | 0.51 |
| 5:C:959:TYR:CE2 | 5:C:2620:ILE:HD13 | 2.45 | 0.50 |
| 5:C:1012:THR:HG22 | 5:C:1080:GLU:OE1 | 2.12 | 0.50 |
| 3:L:136:VAL:HG21 | 3:L:158:PHE:CE2 | 2.47 | 0.49 |
| 5:C:2471:TYR:CZ | 5:C:2475:LEU:HD11 | 2.47 | 0.49 |
| 5:C:1767:GLU:OE1 | 5:C:1824:MET:HE2 | 2.13 | 0.49 |
| 11:K:366:VAL:CG1 | 11:K:444:LEU:HD13 | 2.43 | 0.49 |
| 5:C:2953:LEU:HD22 | 5:C:3005:TRP:CD1 | 2.48 | 0.49 |
| 5:C:2949:ILE:HD11 | 5:C:2970:VAL:HG11 | 1.94 | 0.49 |
| 5:C:1916:ALA:O | 5:C:1920:VAL:HG23 | 2.13 | 0.48 |
| 4:A:931:VAL:HG21 | 4:A:938:GLU:OE2 | 2.13 | 0.47 |
| 2:N:529:ILE:HG23 | 2:N:544:ARG:HD3 | 1.95 | 0.47 |
| 5:C:1555:ARG:O | 5:C:1559:ILE:HG23 | 2.15 | 0.47 |
| 5:C:2866:LYS:O | 5:C:2870:VAL:HG23 | 2.14 | 0.47 |
| 3:L:136:VAL:HG21 | 3:L:158:PHE:CZ | 2.50 | 0.47 |
| 5:C:2167:ILE:HD12 | 5:C:2168:CYS:N | 2.29 | 0.47 |
| 3:L:128:LEU:HD21 | 3:L:137:ILE:HG21 | 1.96 | 0.47 |
| 5:C:2094:THR:O | 5:C:2098:VAL:HG22 | 2.15 | 0.47 |
| 5:C:1321:ARG:NH1 | 5:C:1324:THR:HG22 | 2.29 | 0.47 |
| 5:C:3267:PHE:CZ | 5:C:3318:LEU:HD22 | 2.51 | 0.46 |
| 11:K:197:VAL:HG21 | 11:K:234:TYR:HB3 | 1.97 | 0.46 |
| 5:C:1336:TYR:CZ | 5:C:1340:LEU:HD11 | 2.51 | 0.46 |
| 5:C:2335:LEU:HD12 | 5:C:2338:MET:HE1 | 1.98 | 0.46 |
| 5:C:2219:LEU:CD1 | 5:C:2239:LEU:HD13 | 2.45 | 0.46 |
| 4:A:1144:VAL:HG12 | 4:A:1148:LEU:HD12 | 1.98 | 0.46 |
| 5:C:838:SER:O | 5:C:842:VAL:HG23 | 2.16 | 0.45 |
| 4:A:550:ASN:HB2 | 4:A:592:LEU:HD12 | 1.98 | 0.45 |
| 5:C:686:ALA:CB | 5:C:731:MET:HE2 | 2.46 | 0.45 |
| 3:L:81:LEU:HD11 | 3:L:92:VAL:HG13 | 1.98 | 0.45 |
| 5:C:1748:GLN:N | 5:C:1751:ALA:HB3 | 2.31 | 0.44 |
| 5:C:2949:ILE:HD11 | 5:C:2970:VAL:CG1 | 2.48 | 0.44 |
| 6:D:79:LEU:HD12 | 6:D:80:ILE:N | 2.32 | 0.44 |
| 5:C:2350:ILE:CG2 | 5:C:2354:LEU:HD23 | 2.46 | 0.44 |
| 3:L:146:ILE:H | 3:L:146:ILE:HD12 | 1.83 | 0.44 |
| 10:J:209:GLY:O | 10:J:212:VAL:HG22 | 2.18 | 0.44 |
| 5:C:1054:VAL:HG11 | 5:C:1125:ILE:HG21 | 1.99 | 0.44 |
| 5:C:2297:LEU:HD21 | 5:C:2347:ILE:HD13 | 2.00 | 0.43 |
| 5:C:1427:MET:CE | 5:C:1451:VAL:HG21 | 2.44 | 0.43 |

Continued on next page...

Continued from previous page...

| Atom-1 | Atom-2 | Interatomic distance (Å) | Clash overlap (Å) |
|-------------------|-------------------|--------------------------|-------------------|
| 9:I:240:ARG:O | 9:I:244:VAL:HG23 | 2.19 | 0.43 |
| 5:C:2946:ALA:HA | 5:C:2949:ILE:HD12 | 2.01 | 0.43 |
| 3:L:276:ILE:HD13 | 3:L:578:LEU:HD13 | 2.01 | 0.42 |
| 5:C:223:LYS:O | 5:C:287:THR:HG21 | 2.19 | 0.42 |
| 5:C:686:ALA:HB1 | 5:C:731:MET:HE2 | 2.01 | 0.42 |
| 12:M:410:GLN:OE1 | 12:M:423:MET:HE1 | 2.19 | 0.42 |
| 5:C:96:ILE:HD12 | 5:C:96:ILE:H | 1.84 | 0.42 |
| 5:C:2499:LEU:O | 5:C:2502:VAL:HG22 | 2.19 | 0.42 |
| 4:A:753:GLY:C | 4:A:754:ILE:HD12 | 2.44 | 0.42 |
| 5:C:2824:TRP:CE3 | 12:M:263:LEU:HD11 | 2.54 | 0.42 |
| 4:A:1056:VAL:HG12 | 4:A:1089:ALA:HB1 | 2.01 | 0.42 |
| 3:L:99:LEU:HD21 | 3:L:191:LEU:HD22 | 2.00 | 0.42 |
| 5:C:2953:LEU:HD22 | 5:C:3005:TRP:NE1 | 2.34 | 0.42 |
| 5:C:230:ILE:HD12 | 5:C:231:ILE:N | 2.35 | 0.42 |
| 5:C:1767:GLU:CD | 5:C:1824:MET:HE2 | 2.44 | 0.42 |
| 5:C:2695:TYR:CE1 | 5:C:2699:THR:HG21 | 2.55 | 0.42 |
| 4:A:815:ARG:HD2 | 4:A:819:MET:HE3 | 2.02 | 0.42 |
| 5:C:158:VAL:HG11 | 5:C:233:VAL:HG21 | 2.01 | 0.42 |
| 12:M:154:MET:HE3 | 12:M:154:MET:HA | 2.01 | 0.42 |
| 5:C:1245:LEU:HD22 | 5:C:1263:SER:OG | 2.20 | 0.42 |
| 7:G:83:MET:HB2 | 10:J:277:MET:HE1 | 2.02 | 0.42 |
| 4:A:120:PHE:HB3 | 4:A:170:VAL:HG12 | 2.02 | 0.41 |
| 4:A:483:LEU:HD13 | 4:A:493:GLU:HB3 | 2.03 | 0.41 |
| 5:C:2969:THR:O | 5:C:2973:THR:HG23 | 2.20 | 0.41 |
| 5:C:1661:HIS:O | 5:C:1664:VAL:HG22 | 2.20 | 0.41 |
| 5:C:1754:PHE:O | 5:C:1757:VAL:HG12 | 2.20 | 0.41 |
| 9:I:47:THR:HG23 | 9:I:286:ILE:HD12 | 2.03 | 0.41 |
| 3:L:189:LYS:O | 3:L:193:LEU:HD23 | 2.21 | 0.41 |
| 5:C:2797:MET:HE1 | 12:M:263:LEU:HD13 | 2.03 | 0.41 |
| 4:A:66:MET:HE2 | 4:A:123:VAL:HG22 | 2.03 | 0.41 |
| 5:C:2475:LEU:HD13 | 6:D:131:HIS:CD2 | 2.56 | 0.40 |
| 4:A:484:VAL:HG21 | 4:A:497:SER:HB3 | 2.02 | 0.40 |
| 5:C:861:LEU:HG | 5:C:865:ILE:HD12 | 2.02 | 0.40 |
| 4:A:197:THR:HG23 | 4:A:199:GLU:H | 1.87 | 0.40 |
| 4:A:556:ILE:HD12 | 4:A:556:ILE:O | 2.20 | 0.40 |

There are no symmetry-related clashes.

5.3 Torsion angles

5.3.1 Protein backbone

In the following table, the Percentiles column shows the percent Ramachandran outliers of the chain as a percentile score with respect to all PDB entries followed by that with respect to all EM entries.

The Analysed column shows the number of residues for which the backbone conformation was analysed, and the total number of residues.

| Mol | Chain | Analysed | Favoured | Allowed | Outliers | Percentiles | |
|-----|-------|-----------------|------------|----------|----------|-------------|-----|
| 1 | E | 122/251 (49%) | 118 (97%) | 4 (3%) | 0 | 100 | 100 |
| 2 | N | 51/892 (6%) | 47 (92%) | 4 (8%) | 0 | 100 | 100 |
| 3 | L | 532/589 (90%) | 507 (95%) | 25 (5%) | 0 | 100 | 100 |
| 4 | A | 1156/1217 (95%) | 1086 (94%) | 68 (6%) | 2 (0%) | 43 | 57 |
| 5 | C | 3188/3859 (83%) | 3004 (94%) | 178 (6%) | 6 (0%) | 43 | 57 |
| 6 | D | 176/414 (42%) | 169 (96%) | 6 (3%) | 1 (1%) | 21 | 30 |
| 7 | G | 87/161 (54%) | 83 (95%) | 4 (5%) | 0 | 100 | 100 |
| 8 | H | 95/218 (44%) | 93 (98%) | 2 (2%) | 0 | 100 | 100 |
| 9 | I | 218/317 (69%) | 205 (94%) | 13 (6%) | 0 | 100 | 100 |
| 10 | J | 177/335 (53%) | 168 (95%) | 9 (5%) | 0 | 100 | 100 |
| 11 | K | 383/622 (62%) | 375 (98%) | 8 (2%) | 0 | 100 | 100 |
| 12 | M | 380/779 (49%) | 361 (95%) | 19 (5%) | 0 | 100 | 100 |
| 13 | B | 48/86 (56%) | 47 (98%) | 1 (2%) | 0 | 100 | 100 |
| All | All | 6613/9740 (68%) | 6263 (95%) | 341 (5%) | 9 (0%) | 49 | 63 |

All (9) Ramachandran outliers are listed below:

| Mol | Chain | Res | Type |
|-----|-------|------|------|
| 4 | A | 405 | SER |
| 5 | C | 387 | ARG |
| 5 | C | 678 | ASN |
| 5 | C | 1931 | VAL |
| 5 | C | 2195 | ARG |
| 6 | D | 31 | LEU |
| 4 | A | 137 | LYS |
| 5 | C | 1836 | ALA |
| 5 | C | 2689 | ARG |

5.3.2 Protein sidechains ⓘ

In the following table, the Percentiles column shows the percent sidechain outliers of the chain as a percentile score with respect to all PDB entries followed by that with respect to all EM entries.

The Analysed column shows the number of residues for which the sidechain conformation was analysed, and the total number of residues.

| Mol | Chain | Analysed | Rotameric | Outliers | Percentiles | |
|-----|-------|-----------------|------------|----------|-------------|-----|
| 1 | E | 110/224 (49%) | 109 (99%) | 1 (1%) | 70 | 84 |
| 2 | N | 46/779 (6%) | 46 (100%) | 0 | 100 | 100 |
| 3 | L | 478/521 (92%) | 474 (99%) | 4 (1%) | 73 | 85 |
| 4 | A | 1013/1051 (96%) | 1002 (99%) | 11 (1%) | 65 | 81 |
| 5 | C | 2916/3423 (85%) | 2870 (98%) | 46 (2%) | 55 | 74 |
| 6 | D | 165/370 (45%) | 163 (99%) | 2 (1%) | 63 | 79 |
| 7 | G | 83/141 (59%) | 83 (100%) | 0 | 100 | 100 |
| 8 | H | 86/154 (56%) | 86 (100%) | 0 | 100 | 100 |
| 9 | I | 203/273 (74%) | 201 (99%) | 2 (1%) | 68 | 82 |
| 10 | J | 161/287 (56%) | 159 (99%) | 2 (1%) | 63 | 79 |
| 11 | K | 330/505 (65%) | 327 (99%) | 3 (1%) | 70 | 84 |
| 12 | M | 360/687 (52%) | 357 (99%) | 3 (1%) | 73 | 85 |
| 13 | B | 46/77 (60%) | 44 (96%) | 2 (4%) | 26 | 42 |
| All | All | 5997/8492 (71%) | 5921 (99%) | 76 (1%) | 59 | 78 |

All (76) residues with a non-rotameric sidechain are listed below:

| Mol | Chain | Res | Type |
|-----|-------|-----|------|
| 1 | E | 128 | ARG |
| 3 | L | 69 | GLN |
| 3 | L | 126 | MET |
| 3 | L | 136 | VAL |
| 3 | L | 311 | VAL |
| 4 | A | 368 | ASP |
| 4 | A | 477 | SER |
| 4 | A | 590 | MET |
| 4 | A | 701 | LEU |
| 4 | A | 803 | ASP |
| 4 | A | 814 | GLN |
| 4 | A | 845 | GLU |

Continued on next page...

Continued from previous page...

| Mol | Chain | Res | Type |
|-----|-------|------|------|
| 4 | A | 946 | GLU |
| 4 | A | 978 | LEU |
| 4 | A | 985 | HIS |
| 4 | A | 1088 | LYS |
| 5 | C | 66 | ILE |
| 5 | C | 228 | LEU |
| 5 | C | 298 | TYR |
| 5 | C | 314 | LEU |
| 5 | C | 395 | LEU |
| 5 | C | 409 | GLU |
| 5 | C | 413 | SER |
| 5 | C | 655 | VAL |
| 5 | C | 659 | VAL |
| 5 | C | 690 | VAL |
| 5 | C | 774 | LEU |
| 5 | C | 805 | LEU |
| 5 | C | 916 | VAL |
| 5 | C | 1295 | HIS |
| 5 | C | 1464 | CYS |
| 5 | C | 1475 | MET |
| 5 | C | 1552 | SER |
| 5 | C | 1558 | LEU |
| 5 | C | 1559 | ILE |
| 5 | C | 1587 | MET |
| 5 | C | 1603 | VAL |
| 5 | C | 1706 | ARG |
| 5 | C | 1750 | ARG |
| 5 | C | 1863 | THR |
| 5 | C | 1866 | TRP |
| 5 | C | 1890 | ILE |
| 5 | C | 1917 | ARG |
| 5 | C | 1920 | VAL |
| 5 | C | 1924 | MET |
| 5 | C | 2005 | LEU |
| 5 | C | 2017 | GLU |
| 5 | C | 2101 | LEU |
| 5 | C | 2155 | THR |
| 5 | C | 2174 | LEU |
| 5 | C | 2176 | PHE |
| 5 | C | 2209 | LEU |
| 5 | C | 2215 | LEU |
| 5 | C | 2449 | CYS |

Continued on next page...

Continued from previous page...

| Mol | Chain | Res | Type |
|-----|-------|------|------|
| 5 | C | 2880 | MET |
| 5 | C | 2993 | MET |
| 5 | C | 3135 | SER |
| 5 | C | 3251 | LEU |
| 5 | C | 3368 | LEU |
| 5 | C | 3462 | GLU |
| 5 | C | 3601 | CYS |
| 5 | C | 3604 | LYS |
| 6 | D | 179 | LEU |
| 6 | D | 210 | THR |
| 9 | I | 26 | PHE |
| 9 | I | 191 | LEU |
| 10 | J | 143 | MET |
| 10 | J | 144 | MET |
| 11 | K | 118 | ILE |
| 11 | K | 129 | VAL |
| 11 | K | 291 | LEU |
| 12 | M | 5 | LEU |
| 12 | M | 250 | GLN |
| 12 | M | 358 | LEU |
| 13 | B | 26 | THR |
| 13 | B | 33 | VAL |

Sometimes sidechains can be flipped to improve hydrogen bonding and reduce clashes. All (49) such sidechains are listed below:

| Mol | Chain | Res | Type |
|-----|-------|------|------|
| 2 | N | 548 | ASN |
| 2 | N | 554 | HIS |
| 3 | L | 88 | HIS |
| 3 | L | 194 | HIS |
| 3 | L | 243 | GLN |
| 3 | L | 532 | ASN |
| 4 | A | 9 | GLN |
| 4 | A | 28 | GLN |
| 4 | A | 1094 | ASN |
| 4 | A | 1143 | HIS |
| 4 | A | 1152 | HIS |
| 5 | C | 405 | ASN |
| 5 | C | 703 | ASN |
| 5 | C | 735 | HIS |
| 5 | C | 777 | GLN |
| 5 | C | 791 | ASN |

Continued on next page...

Continued from previous page...

| Mol | Chain | Res | Type |
|-----|-------|------|------|
| 5 | C | 889 | HIS |
| 5 | C | 920 | GLN |
| 5 | C | 936 | GLN |
| 5 | C | 1048 | HIS |
| 5 | C | 1253 | ASN |
| 5 | C | 1300 | GLN |
| 5 | C | 1661 | HIS |
| 5 | C | 1702 | ASN |
| 5 | C | 1748 | GLN |
| 5 | C | 1922 | GLN |
| 5 | C | 2348 | GLN |
| 5 | C | 2593 | ASN |
| 5 | C | 2619 | HIS |
| 5 | C | 2646 | HIS |
| 5 | C | 2662 | GLN |
| 5 | C | 2766 | GLN |
| 5 | C | 3081 | GLN |
| 5 | C | 3185 | HIS |
| 5 | C | 3642 | GLN |
| 5 | C | 3697 | GLN |
| 5 | C | 3700 | GLN |
| 5 | C | 3843 | ASN |
| 6 | D | 232 | GLN |
| 8 | H | 168 | ASN |
| 8 | H | 173 | HIS |
| 10 | J | 203 | HIS |
| 10 | J | 215 | GLN |
| 10 | J | 322 | HIS |
| 11 | K | 86 | GLN |
| 11 | K | 108 | ASN |
| 11 | K | 162 | HIS |
| 11 | K | 375 | GLN |
| 12 | M | 368 | GLN |

5.3.3 RNA ⓘ

There are no RNA molecules in this entry.

5.4 Non-standard residues in protein, DNA, RNA chains ⓘ

There are no non-standard protein/DNA/RNA residues in this entry.

5.5 Carbohydrates [i](#)

There are no oligosaccharides in this entry.

5.6 Ligand geometry [i](#)

There are no ligands in this entry.

5.7 Other polymers [i](#)

There are no such residues in this entry.

5.8 Polymer linkage issues [i](#)

There are no chain breaks in this entry.

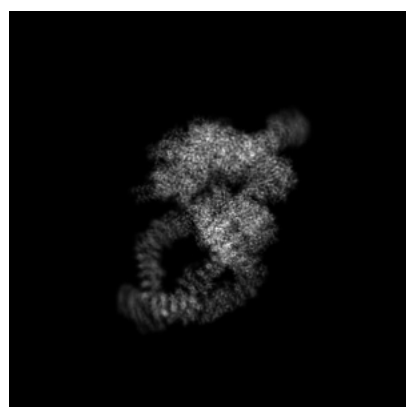
6 Map visualisation [i](#)

This section contains visualisations of the EMDB entry EMD-53937. These allow visual inspection of the internal detail of the map and identification of artifacts.

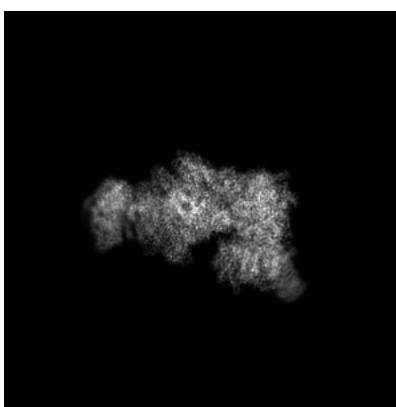
No raw map or half-maps were deposited for this entry and therefore no images, graphs, etc. pertaining to the raw map can be shown.

6.1 Orthogonal projections [i](#)

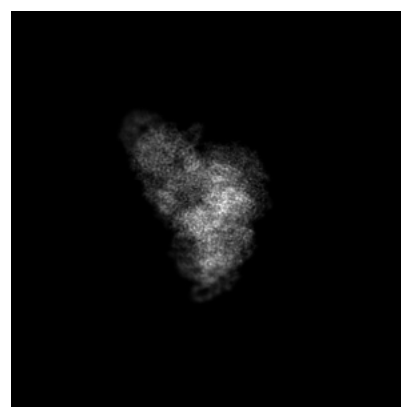
6.1.1 Primary map



X



Y



Z

The images above show the map projected in three orthogonal directions.

6.2 Central slices [i](#)

6.2.1 Primary map



X Index: 204



Y Index: 204

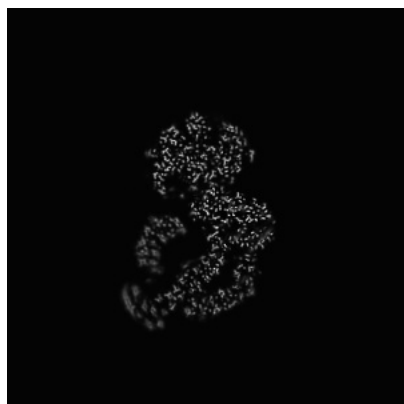


Z Index: 204

The images above show central slices of the map in three orthogonal directions.

6.3 Largest variance slices [i](#)

6.3.1 Primary map



X Index: 211



Y Index: 219

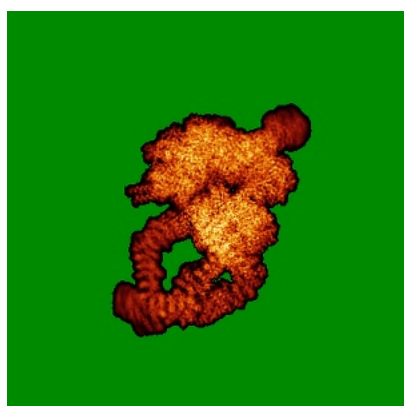


Z Index: 261

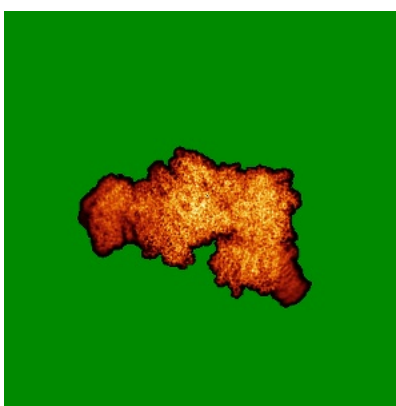
The images above show the largest variance slices of the map in three orthogonal directions.

6.4 Orthogonal standard-deviation projections (False-color) [i](#)

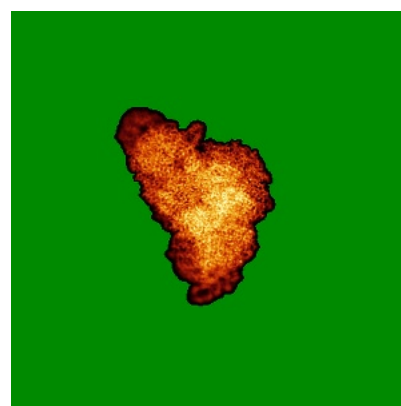
6.4.1 Primary map



X



Y

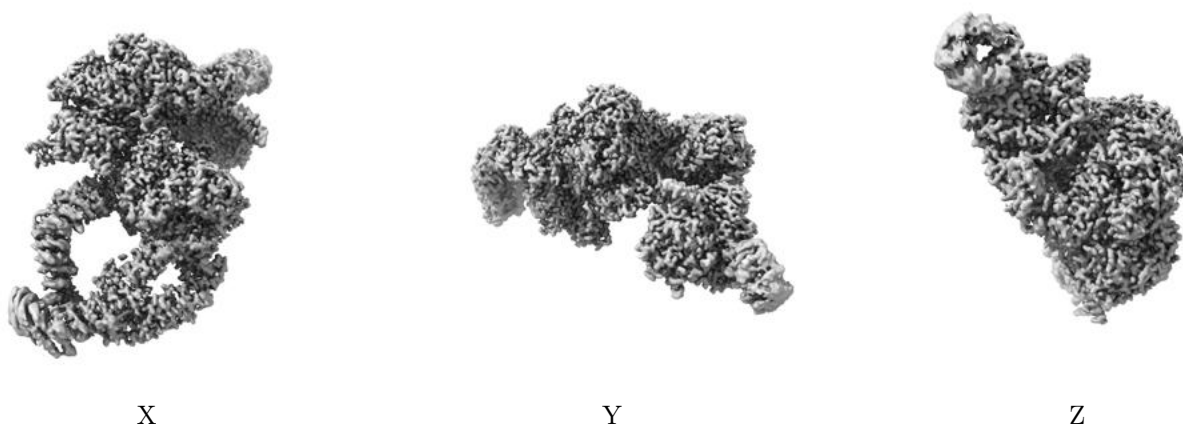


Z

The images above show the map standard deviation projections with false color in three orthogonal directions. Minimum values are shown in green, max in blue, and dark to light orange shades represent small to large values respectively.

6.5 Orthogonal surface views [i](#)

6.5.1 Primary map



The images above show the 3D surface view of the map at the recommended contour level 3.0. These images, in conjunction with the slice images, may facilitate assessment of whether an appropriate contour level has been provided.

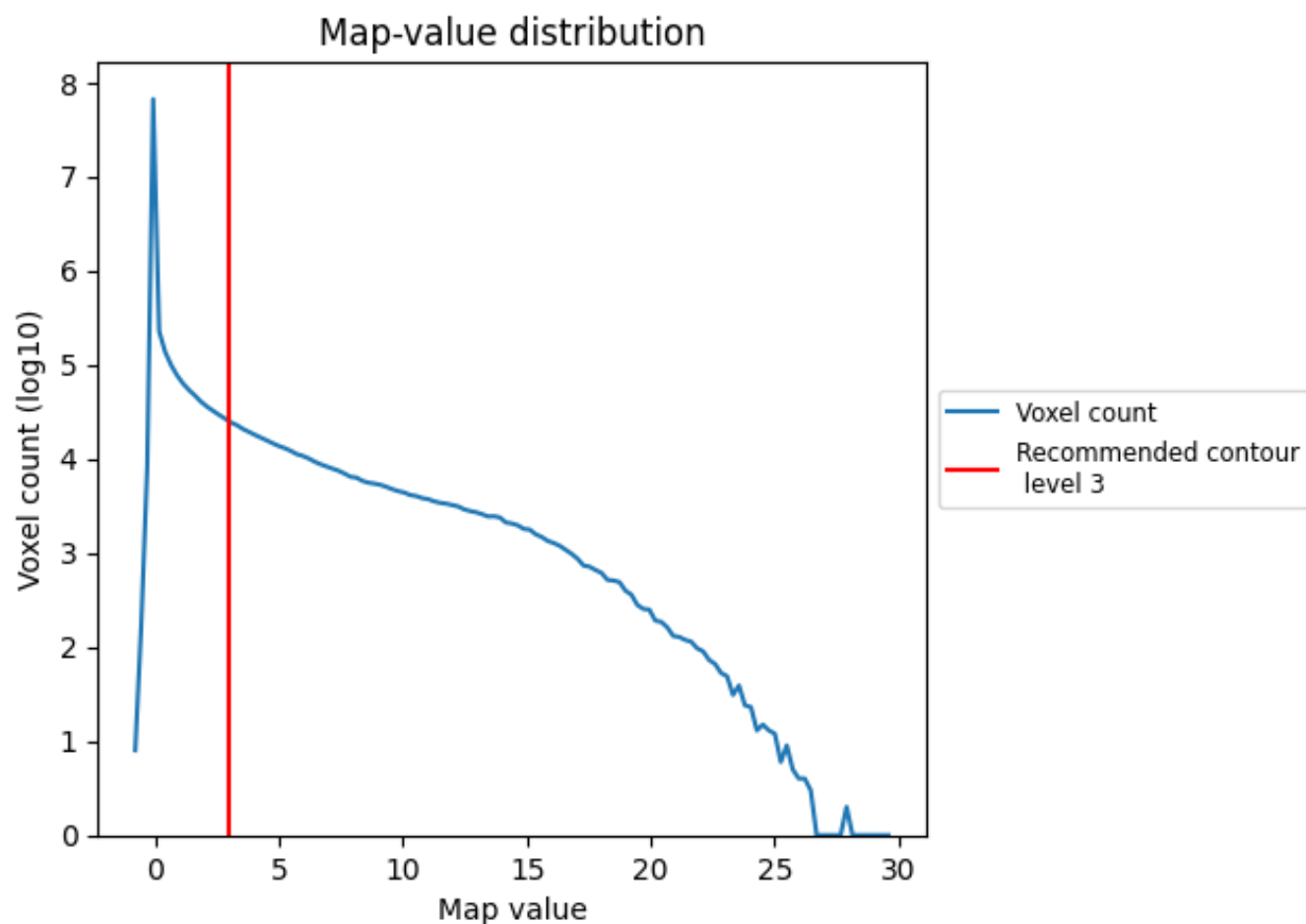
6.6 Mask visualisation [i](#)

This section was not generated. No masks/segmentation were deposited.

7 Map analysis [i](#)

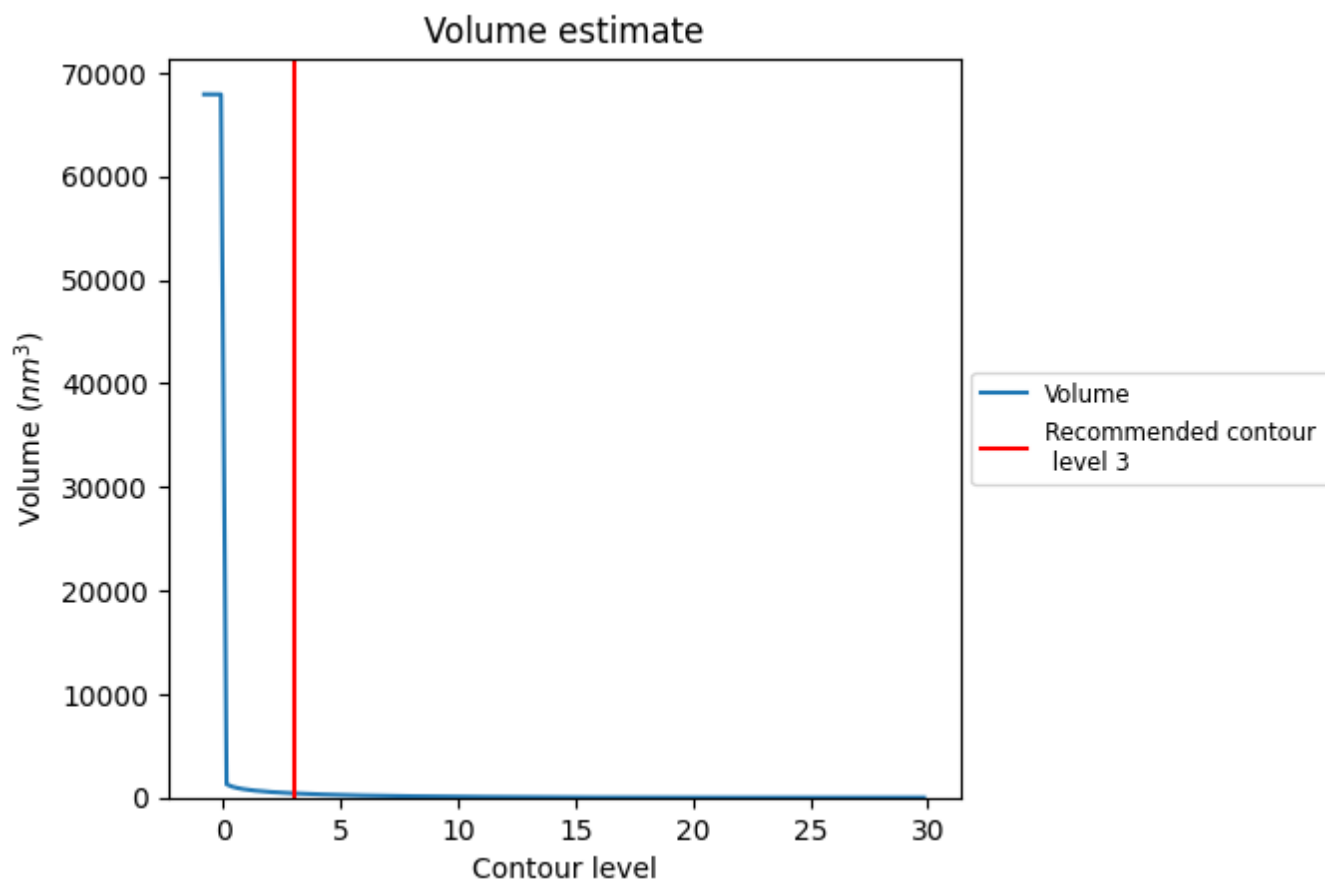
This section contains the results of statistical analysis of the map.

7.1 Map-value distribution [i](#)



The map-value distribution is plotted in 128 intervals along the x-axis. The y-axis is logarithmic. A spike in this graph at zero usually indicates that the volume has been masked.

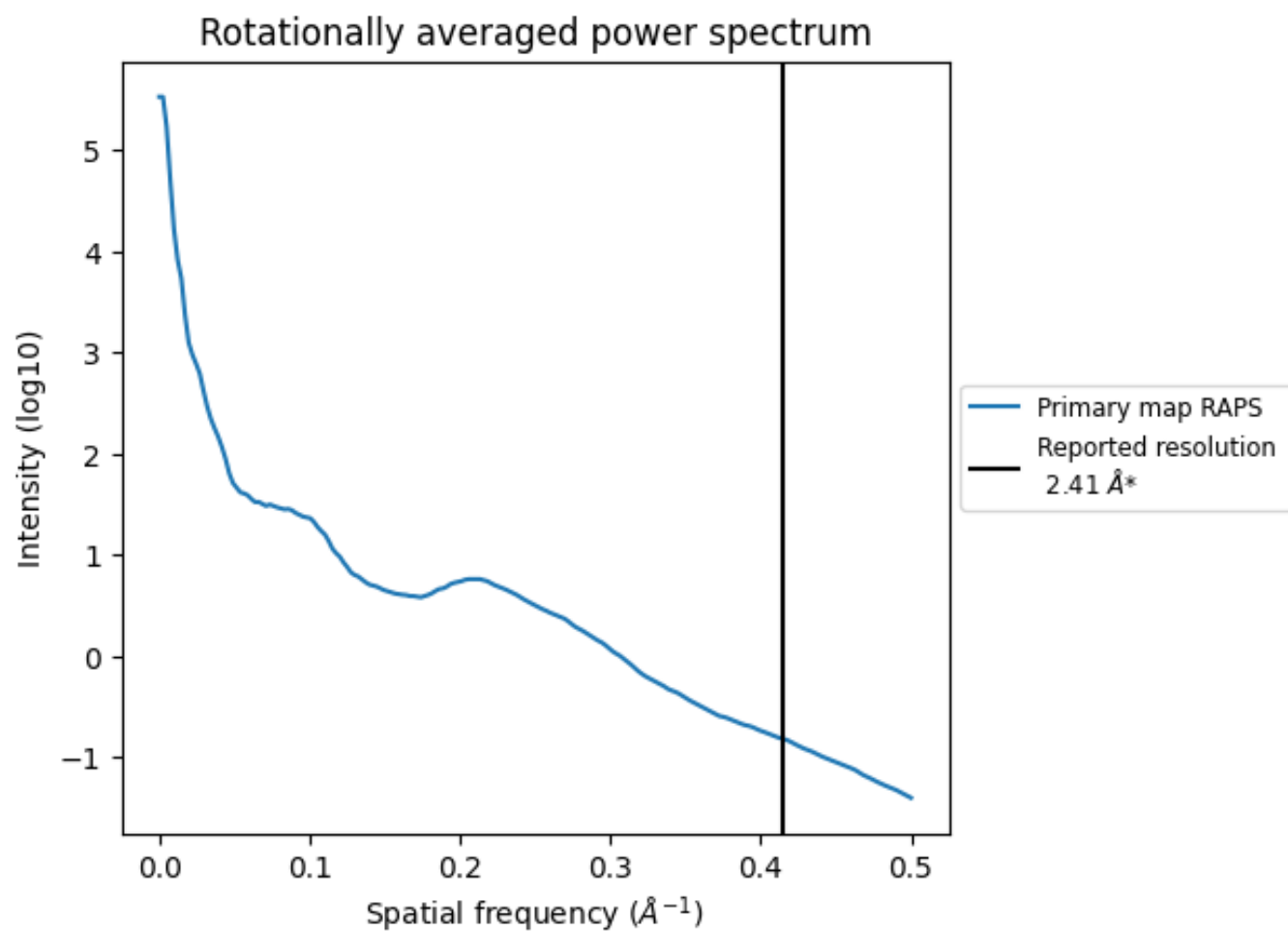
7.2 Volume estimate [i](#)



The volume at the recommended contour level is 409 nm^3 ; this corresponds to an approximate mass of 369 kDa.

The volume estimate graph shows how the enclosed volume varies with the contour level. The recommended contour level is shown as a vertical line and the intersection between the line and the curve gives the volume of the enclosed surface at the given level.

7.3 Rotationally averaged power spectrum ⓘ



*Reported resolution corresponds to spatial frequency of 0.415 Å⁻¹

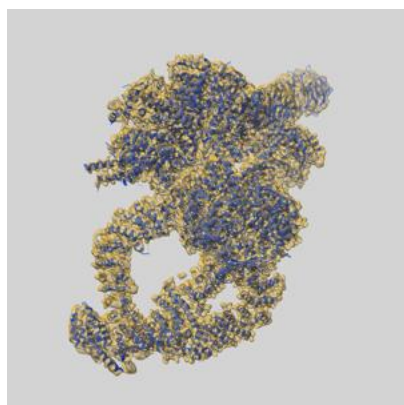
8 Fourier-Shell correlation

This section was not generated. No FSC curve or half-maps provided.

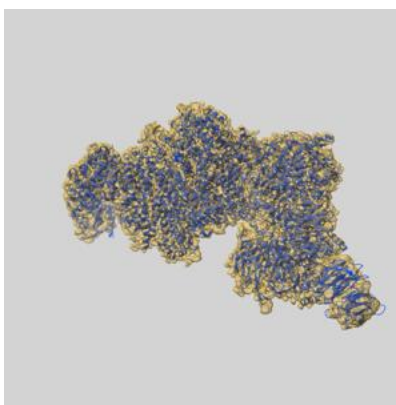
9 Map-model fit [i](#)

This section contains information regarding the fit between EMDB map EMD-53937 and PDB model 9RDK. Per-residue inclusion information can be found in [section 3](#) on [page 6](#).

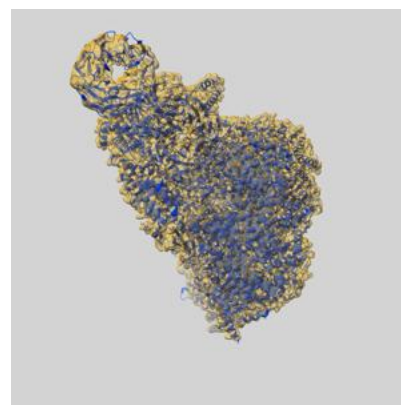
9.1 Map-model overlay [i](#)



X



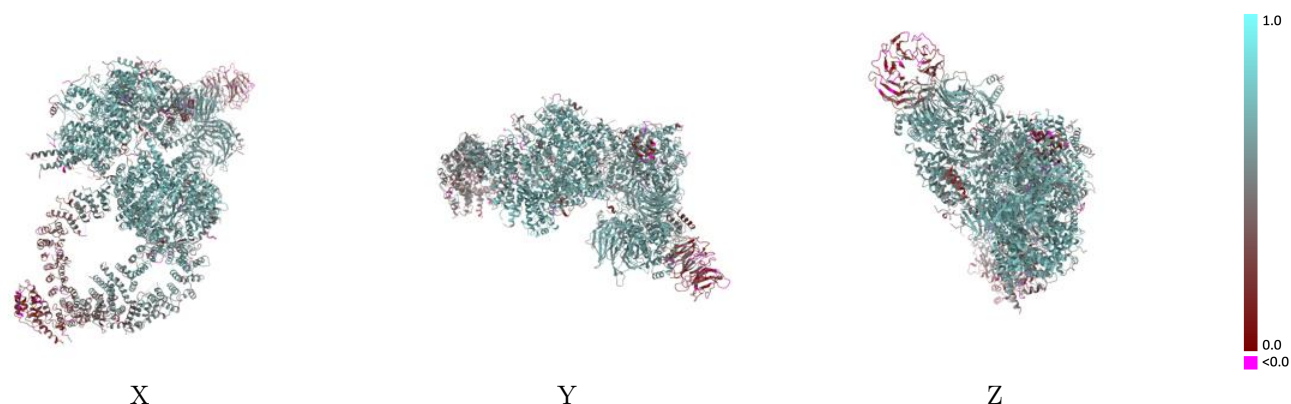
Y



Z

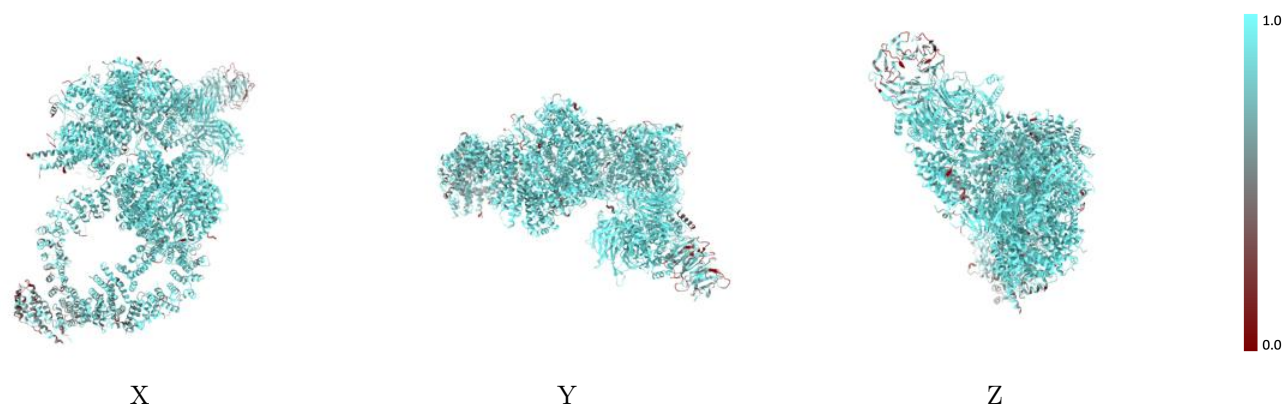
The images above show the 3D surface view of the map at the recommended contour level 3.0 at 50% transparency in yellow overlaid with a ribbon representation of the model coloured in blue. These images allow for the visual assessment of the quality of fit between the atomic model and the map.

9.2 Q-score mapped to coordinate model [i](#)



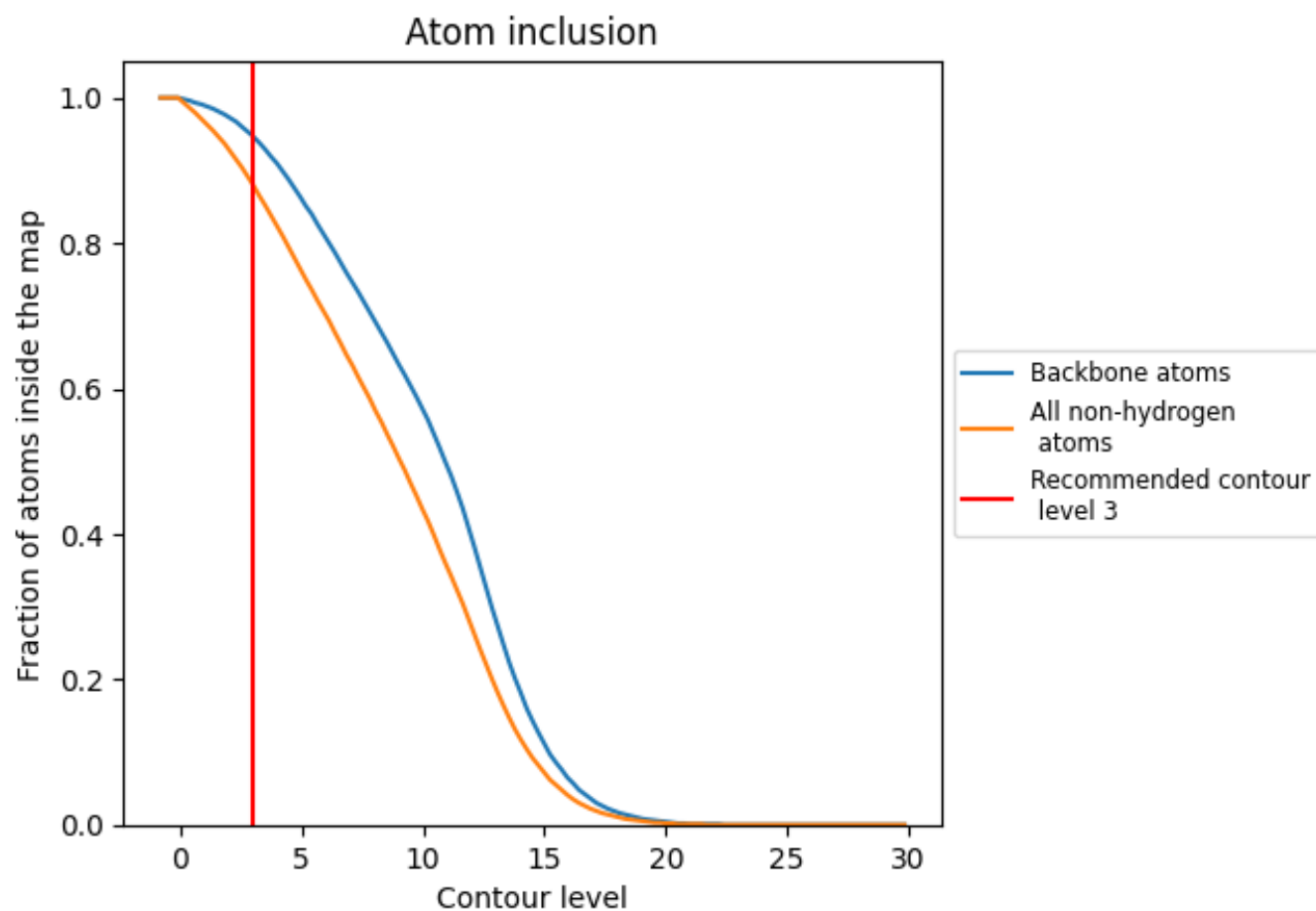
The images above show the model with each residue coloured according its Q-score. This shows their resolvability in the map with higher Q-score values reflecting better resolvability. Please note: Q-score is calculating the resolvability of atoms, and thus high values are only expected at resolutions at which atoms can be resolved. Low Q-score values may therefore be expected for many entries.

9.3 Atom inclusion mapped to coordinate model [i](#)



The images above show the model with each residue coloured according to its atom inclusion. This shows to what extent they are inside the map at the recommended contour level (3).



























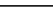
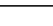
9.4 Atom inclusion [i](#)



At the recommended contour level, 95% of all backbone atoms, 88% of all non-hydrogen atoms, are inside the map.

9.5 Map-model fit summary

The table lists the average atom inclusion at the recommended contour level (3) and Q-score for the entire model and for each chain.

| Chain | Atom inclusion | Q-score |
|-------|--|--|
| All |  0.8800 |  0.5570 |
| A |  0.8590 |  0.5060 |
| B |  0.9760 |  0.6570 |
| C |  0.8690 |  0.5500 |
| D |  0.9140 |  0.6250 |
| E |  0.9470 |  0.6490 |
| G |  0.8860 |  0.6180 |
| H |  0.9230 |  0.6380 |
| I |  0.9040 |  0.5880 |
| J |  0.9110 |  0.6200 |
| K |  0.9390 |  0.5920 |
| L |  0.9070 |  0.5700 |
| M |  0.8580 |  0.5580 |
| N |  0.8290 |  0.5510 |

