



# Full wwPDB X-ray Structure Validation Report ⓘ

Apr 21, 2026 – 06:31 pm BST

PDB ID : 9QW8 / pdb\_00009qw8  
Title : FKBP12 in complex with bifunctional ligand 1ad and the first bromodomain of BRD4  
Authors : Meyners, C.; Hausch, F.  
Deposited on : 2025-04-14  
Resolution : 1.80 Å(reported)

This is a Full wwPDB X-ray Structure Validation Report for a publicly released PDB entry.

We welcome your comments at [validation@mail.wwpdb.org](mailto:validation@mail.wwpdb.org)

A user guide is available at

<https://www.wwpdb.org/validation/2017/XrayValidationReportHelp>

with specific help available everywhere you see the ⓘ symbol.

The types of validation reports are described at

<http://www.wwpdb.org/validation/2017/FAQs#types>.

---

The following versions of software and data (see [references ⓘ](#)) were used in the production of this report:

MolProbity	:	4-5-2 with Phenix2.0
Mogul	:	1.8.4, CSD as541be (2020)
Xtriage (Phenix)	:	2.0
EDS	:	3.0
Buster-report	:	wwPDB partial adaption of 1.1.7 (2018)
Percentile statistics	:	20250101.v01 (using entries in the PDB archive January 1st 2025)
CCP4	:	9.0.010 (Gargrove)
Density-Fitness	:	1.0.12
Ideal geometry (proteins)	:	Engh & Huber (2001)
Ideal geometry (DNA, RNA)	:	Parkinson et al. (1996)
Validation Pipeline (wwPDB-VP)	:	2.49

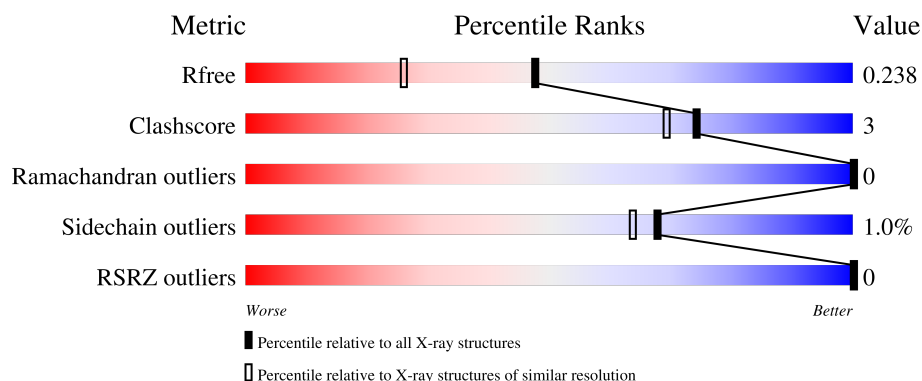
# 1 Overall quality at a glance

The following experimental techniques were used to determine the structure:

*X-RAY DIFFRACTION*

The reported resolution of this entry is 1.80 Å.

Percentile scores (ranging between 0-100) for global validation metrics of the entry are shown in the following graphic. The table shows the number of entries on which the scores are based.



Metric	Whole archive (#Entries)	Similar resolution (#Entries, resolution range(Å))
$R_{free}$	180053	7662 (1.80-1.80)
Clashscore	190562	8479 (1.80-1.80)
Ramachandran outliers	187476	8391 (1.80-1.80)
Sidechain outliers	187428	8390 (1.80-1.80)
RSRZ outliers	180081	7663 (1.80-1.80)

The table below summarises the geometric issues observed across the polymeric chains and their fit to the electron density. The red, orange, yellow and green segments of the lower bar indicate the fraction of residues that contain outliers for  $\geq 3$ , 2, 1 and 0 types of geometric quality criteria respectively. A grey segment represents the fraction of residues that are not modelled. The numeric value for each fraction is indicated below the corresponding segment, with a dot representing fractions  $\leq 5\%$ . The upper red bar (where present) indicates the fraction of residues that have poor fit to the electron density. The numeric value is given above the bar.

Mol	Chain	Length	Quality of chain
1	A	127	
1	B	127	
2	C	107	
2	D	107	

## 2 Entry composition

There are 4 unique types of molecules in this entry. The entry contains 7766 atoms, of which 3703 are hydrogens and 0 are deuteriums.

In the tables below, the ZeroOcc column contains the number of atoms modelled with zero occupancy, the AltConf column contains the number of residues with at least one atom in alternate conformation and the Trace column contains the number of residues modelled with at most 2 atoms.

- Molecule 1 is a protein called Bromodomain-containing protein 4.

Mol	Chain	Residues	Atoms						ZeroOcc	AltConf	Trace
1	A	126	Total	C	H	N	O	S	31	0	0
			2055	669	1023	170	186	7			
1	B	126	Total	C	H	N	O	S	39	2	0
			2016	663	992	164	190	7			

There are 4 discrepancies between the modelled and reference sequences:

Chain	Residue	Modelled	Actual	Comment	Reference
A	0	SER	-	expression tag	UNP O60885
A	1	MET	-	expression tag	UNP O60885
B	0	SER	-	expression tag	UNP O60885
B	1	MET	-	expression tag	UNP O60885

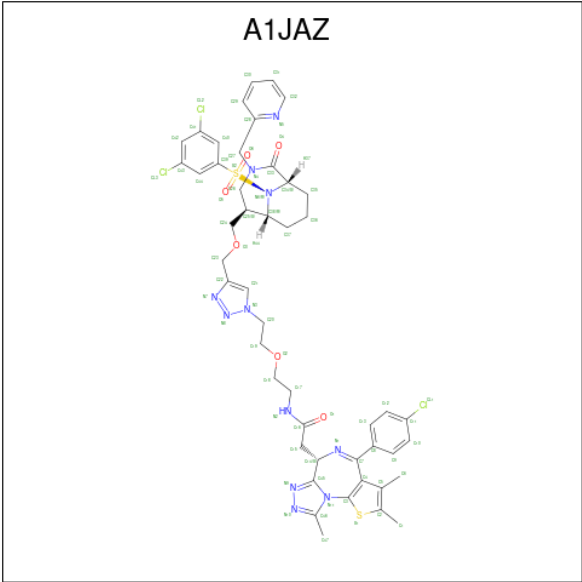
- Molecule 2 is a protein called Peptidyl-prolyl cis-trans isomerase FKBP1A.

Mol	Chain	Residues	Atoms						ZeroOcc	AltConf	Trace
2	D	107	Total	C	H	N	O	S	37	2	0
			1600	513	792	139	153	3			
2	C	107	Total	C	H	N	O	S	33	0	0
			1601	513	796	137	152	3			

There are 2 discrepancies between the modelled and reference sequences:

Chain	Residue	Modelled	Actual	Comment	Reference
D	22	VAL	CYS	engineered mutation	UNP P62942
C	22	VAL	CYS	engineered mutation	UNP P62942

- Molecule 3 is {N}-[2-[2-[4-[(1 {S},5 {S},6 {R})-10-[3,5-bis(chloranyl)phenyl]sulfonyl-2-oxid anylidene-3-(pyridin-2-ylmethyl)-3,10-diazabicyclo[4.3.1]decan-5-yl]methoxymethyl]-1,2,3-triazol-1-yl]ethoxy]ethyl]-2-[(9 {S})-7-(4-chlorophenyl)-4,5,13-trimethyl-3-thia-1,8,11,12-tetrazatricyclo[8.3.0.0<sup>^</sup>{2,6}]trideca-2(6),4,7,10,12-pentaen-9-yl]ethanamide (CCD ID: A1JAZ) (formula: C<sub>47</sub>H<sub>50</sub>Cl<sub>3</sub>N<sub>11</sub>O<sub>6</sub>S<sub>2</sub>) (labeled as "Ligand of Interest" by depositor).



Mol	Chain	Residues	Atoms							ZeroOcc	AltConf
3	D	1	Total	C	Cl	H	N	O	S	9	0
			119	47	3	50	11	6	2		
3	C	1	Total	C	Cl	H	N	O	S	9	0
			119	47	3	50	11	6	2		


- Molecule 4 is water.

Mol	Chain	Residues	Atoms		ZeroOcc	AltConf
4	A	103	Total	O	0	0
			103	103		
4	B	84	Total	O	0	0
			84	84		
4	D	21	Total	O	0	0
			21	21		
4	C	48	Total	O	0	0
			48	48		

### 3 Residue-property plots [i](#)


These plots are drawn for all protein, RNA, DNA and oligosaccharide chains in the entry. The first graphic for a chain summarises the proportions of the various outlier classes displayed in the second graphic. The second graphic shows the sequence view annotated by issues in geometry and electron density. Residues are color-coded according to the number of geometric quality criteria for which they contain at least one outlier: green = 0, yellow = 1, orange = 2 and red = 3 or more. A red dot above a residue indicates a poor fit to the electron density ( $RSRZ > 2$ ). Stretches of 2 or more consecutive residues without any outlier are shown as a green connector. Residues present in the sample, but not in the model, are shown in grey.

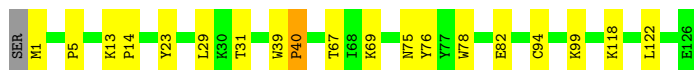
- Molecule 1: Bromodomain-containing protein 4

Chain A:  88% 11% .




- Molecule 1: Bromodomain-containing protein 4

Chain B:  84% 14% ..




- Molecule 2: Peptidyl-prolyl cis-trans isomerase FKBP1A

Chain D:  82% 15% .



- Molecule 2: Peptidyl-prolyl cis-trans isomerase FKBP1A

Chain C:  91% 7% .



## 4 Data and refinement statistics

Property	Value	Source
Space group	P 1	Depositor
Cell constants a, b, c, $\alpha$ , $\beta$ , $\gamma$	35.65Å 35.65Å 100.92Å 86.46° 84.22° 72.47°	Depositor
Resolution (Å)	100.35 – 1.80 100.35 – 1.80	Depositor EDS
% Data completeness (in resolution range)	97.0 (100.35-1.80) 92.9 (100.35-1.80)	Depositor EDS
$R_{merge}$	0.08	Depositor
$R_{sym}$	(Not available)	Depositor
$\langle I/\sigma(I) \rangle$ <sup>1</sup>	1.44 (at 1.80Å)	Xtriage
Refinement program	REFMAC 5.8.0430 (refmacat 0.4.100)	Depositor
R, $R_{free}$	0.213 , 0.243 0.214 , 0.238	Depositor DCC
$R_{free}$ test set	2063 reflections (4.72%)	wwPDB-VP
Wilson B-factor (Å <sup>2</sup> )	21.1	Xtriage
Anisotropy	0.344	Xtriage
Bulk solvent $k_{sol}$ (e/Å <sup>3</sup> ), $B_{sol}$ (Å <sup>2</sup> )	0.39 , 23.2	EDS
L-test for twinning <sup>2</sup>	$\langle  L  \rangle = 0.49$ , $\langle L^2 \rangle = 0.32$	Xtriage
Estimated twinning fraction	0.088 for -k,-h,-l	Xtriage
$F_o, F_c$ correlation	0.95	EDS
Total number of atoms	7766	wwPDB-VP
Average B, all atoms (Å <sup>2</sup> )	25.0	wwPDB-VP

Xtriage's analysis on translational NCS is as follows: *The largest off-origin peak in the Patterson function is 9.12% of the height of the origin peak. No significant pseudotranslation is detected.*

<sup>1</sup>Intensities estimated from amplitudes.

<sup>2</sup>Theoretical values of  $\langle |L| \rangle$ ,  $\langle L^2 \rangle$  for acentric reflections are 0.5, 0.333 respectively for untwinned datasets, and 0.375, 0.2 for perfectly twinned datasets.

## 5 Model quality

### 5.1 Standard geometry

Bond lengths and bond angles in the following residue types are not validated in this section: A1JAZ

The Z score for a bond length (or angle) is the number of standard deviations the observed value is removed from the expected value. A bond length (or angle) with  $|Z| > 5$  is considered an outlier worth inspection. RMSZ is the root-mean-square of all Z scores of the bond lengths (or angles).

Mol	Chain	Bond lengths		Bond angles	
		RMSZ	# Z  >5	RMSZ	# Z  >5
1	A	0.86	0/1062	1.43	10/1450 (0.7%)
1	B	0.86	0/1062	1.36	7/1456 (0.5%)
2	C	0.78	0/824	1.30	6/1116 (0.5%)
2	D	0.69	0/832	1.34	10/1129 (0.9%)
All	All	0.81	0/3780	1.36	33/5151 (0.6%)

There are no bond length outliers.

All (33) bond angle outliers are listed below:

Mol	Chain	Res	Type	Atoms	Z	Observed(°)	Ideal(°)
1	B	75	ASN	CA-CB-CG	-8.20	104.41	112.60
2	D	43	ASN	CB-CA-C	-7.66	100.85	111.73
2	C	17	LYS	CB-CA-C	7.56	122.28	109.50
1	A	117	GLN	N-CA-CB	-7.21	99.56	110.01
1	B	5	PRO	CB-CA-C	7.07	119.54	110.92
1	A	102	ASP	CA-CB-CG	6.83	119.43	112.60
2	D	40	ARG	N-CA-CB	6.78	119.84	110.01
2	C	79	ASP	CA-CB-CG	6.72	119.32	112.60
2	D	96	THR	CA-CB-OG1	-6.71	99.53	109.60
1	A	43	GLN	N-CA-CB	-6.64	102.92	111.35
1	B	82	GLU	CB-CG-CD	-6.57	101.44	112.60
2	D	11	ASP	CA-CB-CG	6.40	119.00	112.60
2	D	40	ARG	CB-CA-C	-6.36	100.90	110.88
1	B	99	LYS	CB-CA-C	6.26	118.30	108.84
1	A	117	GLN	CB-CA-C	6.01	120.32	110.88
2	D	53	GLN	N-CA-CB	-5.97	103.40	112.47
1	B	40	PRO	CB-CA-C	-5.81	103.60	111.85
1	A	13	LYS	CB-CA-C	-5.71	102.29	109.31
2	C	44	LYS	CB-CA-C	-5.68	104.28	110.98
1	A	8	THR	CA-CB-OG1	-5.68	101.09	109.60

*Continued on next page...*

*Continued from previous page...*

Mol	Chain	Res	Type	Atoms	Z	Observed(°)	Ideal(°)
2	C	16	PRO	CB-CA-C	-5.65	104.52	111.64
2	D	60	GLU	N-CA-CB	5.63	119.03	110.14
1	A	4	PRO	O-C-N	-5.49	118.78	121.31
2	D	27	THR	CA-CB-OG1	-5.48	101.37	109.60
1	A	125	GLU	N-CA-CB	5.40	119.67	110.50
1	B	67	THR	CA-CB-OG1	-5.32	101.62	109.60
1	B	94	CYS	CB-CA-C	5.32	119.62	110.79
1	A	46	ASP	CA-CB-CG	5.32	117.92	112.60
2	D	35	LYS	N-CA-CB	5.24	117.97	110.06
2	C	100	ASP	CA-CB-CG	5.16	117.76	112.60
2	D	40	ARG	NE-CZ-NH2	5.16	123.85	119.20
1	A	124	THR	CA-CB-OG1	-5.08	101.98	109.60
2	C	75	THR	CA-CB-OG1	-5.05	102.02	109.60

There are no chirality outliers.

There are no planarity outliers.

## 5.2 Too-close contacts

In the following table, the Non-H and H(model) columns list the number of non-hydrogen atoms and hydrogen atoms in the chain respectively. The H(added) column lists the number of hydrogen atoms added and optimized by MolProbity. The Clashes column lists the number of clashes within the asymmetric unit, whereas Symm-Clashes lists symmetry-related clashes.

Mol	Chain	Non-H	H(model)	H(added)	Clashes	Symm-Clashes
1	A	1032	1023	1012	4	0
1	B	1024	992	968	9	0
2	C	805	796	781	3	0
2	D	808	792	767	7	0
3	C	69	50	0	1	0
3	D	69	50	0	0	0
4	A	103	0	0	0	0
4	B	84	0	0	0	0
4	C	48	0	0	0	0
4	D	21	0	0	0	0
All	All	4063	3703	3528	23	0

The all-atom clashscore is defined as the number of clashes found per 1000 atoms (including hydrogen atoms). The all-atom clashscore for this structure is 3.

All (23) close contacts within the same asymmetric unit are listed below, sorted by their clash magnitude.



Atom-1	Atom-2	Interatomic distance (Å)	Clash overlap (Å)
1:B:31:THR:HG21	1:B:118:LYS:HE3	1.82	0.62
2:D:26:TYR:HA	2:D:100:ASP:O	2.00	0.60
1:B:14:PRO:HB2	1:B:78:TRP:CZ3	2.37	0.59
2:D:50:LEU:HD12	2:D:60:GLU:OE1	2.05	0.57
1:A:39:TRP:CD2	1:A:40:PRO:HD3	2.40	0.56
1:A:39:TRP:CG	1:A:40:PRO:HD3	2.40	0.56
1:B:39:TRP:CG	1:B:40:PRO:HD3	2.41	0.54
1:A:104:ILE:HD13	3:C:201:A1JAZ:C9	2.39	0.53
2:D:57:ARG:NH2	2:D:80:TYR:CE1	2.77	0.52
1:B:13:LYS:NZ	1:B:76:TYR:O	2.38	0.52
1:B:29:LEU:HD21	1:B:69:LYS:HE2	1.93	0.51
2:C:26:TYR:HA	2:C:100:ASP:O	2.11	0.50
1:B:23:TYR:CD2	1:B:122:LEU:HD23	2.46	0.50
2:D:71[B]:ARG:HG3	2:D:102:GLU:HB2	1.93	0.49
2:C:16:PRO:HB2	2:C:50:LEU:HD22	1.97	0.46
2:D:71[B]:ARG:HE	2:D:71[B]:ARG:HB2	1.29	0.45
2:C:21:THR:HB	2:C:107:GLU:HB2	1.99	0.45
1:A:91:PHE:CD2	1:A:112:GLU:HG3	2.52	0.44
1:B:39:TRP:CD2	1:B:40:PRO:HD3	2.54	0.43
1:B:29:LEU:CD2	1:B:69:LYS:HE2	2.49	0.42
2:D:90:ILE:HG22	2:D:91:ILE:HG12	2.02	0.41
1:B:39:TRP:N	1:B:40:PRO:CD	2.84	0.41
2:D:52:LYS:O	2:D:53:GLN:CB	2.70	0.40

There are no symmetry-related clashes.

## 5.3 Torsion angles [i](#)

### 5.3.1 Protein backbone [i](#)

In the following table, the Percentiles column shows the percent Ramachandran outliers of the chain as a percentile score with respect to all X-ray entries followed by that with respect to entries of similar resolution.

The Analysed column shows the number of residues for which the backbone conformation was analysed, and the total number of residues.

Mol	Chain	Analysed	Favoured	Allowed	Outliers	Percentiles	
1	A	124/127 (98%)	123 (99%)	1 (1%)	0	100	100
1	B	126/127 (99%)	124 (98%)	2 (2%)	0	100	100
2	C	105/107 (98%)	100 (95%)	5 (5%)	0	100	100

*Continued on next page...*

*Continued from previous page...*

Mol	Chain	Analysed	Favoured	Allowed	Outliers	Percentiles	
2	D	107/107 (100%)	102 (95%)	5 (5%)	0	100	100
All	All	462/468 (99%)	449 (97%)	13 (3%)	0	100	100

There are no Ramachandran outliers to report.

### 5.3.2 Protein sidechains ⓘ

In the following table, the Percentiles column shows the percent sidechain outliers of the chain as a percentile score with respect to all X-ray entries followed by that with respect to entries of similar resolution.

The Analysed column shows the number of residues for which the sidechain conformation was analysed, and the total number of residues.

Mol	Chain	Analysed	Rotameric	Outliers	Percentiles	
1	A	114/120 (95%)	114 (100%)	0	100	100
1	B	112/120 (93%)	111 (99%)	1 (1%)	70	67
2	C	83/89 (93%)	82 (99%)	1 (1%)	63	57
2	D	82/89 (92%)	80 (98%)	2 (2%)	43	31
All	All	391/418 (94%)	387 (99%)	4 (1%)	68	64

All (4) residues with a non-rotameric sidechain are listed below:

Mol	Chain	Res	Type
1	B	1	MET
2	D	40	ARG
2	D	87	HIS
2	C	44	LYS

Sometimes sidechains can be flipped to improve hydrogen bonding and reduce clashes. All (8) such sidechains are listed below:

Mol	Chain	Res	Type
1	A	20	GLN
1	A	43	GLN
1	A	98	ASN
1	B	12	ASN
1	B	43	GLN
2	D	3	GLN
2	D	65	GLN

*Continued on next page...*

*Continued from previous page...*

Mol	Chain	Res	Type
2	C	53	GLN

### 5.3.3 RNA [i](#)

There are no RNA molecules in this entry.

## 5.4 Non-standard residues in protein, DNA, RNA chains [i](#)

There are no non-standard protein/DNA/RNA residues in this entry.

## 5.5 Carbohydrates [i](#)

There are no oligosaccharides in this entry.

## 5.6 Ligand geometry [i](#)

2 ligands are modelled in this entry.

In the following table, the Counts columns list the number of bonds (or angles) for which Mogul statistics could be retrieved, the number of bonds (or angles) that are observed in the model and the number of bonds (or angles) that are defined in the Chemical Component Dictionary. The Link column lists molecule types, if any, to which the group is linked. The Z score for a bond length (or angle) is the number of standard deviations the observed value is removed from the expected value. A bond length (or angle) with  $|Z| > 2$  is considered an outlier worth inspection. RMSZ is the root-mean-square of all Z scores of the bond lengths (or angles).

Mol	Type	Chain	Res	Link	Bond lengths			Bond angles		
					Counts	RMSZ	# $ Z  > 2$	Counts	RMSZ	# $ Z  > 2$
3	A1JAZ	D	201	-	71,77,77	0.84	1 (1%)	86,112,112	1.64	10 (11%)
3	A1JAZ	C	201	-	71,77,77	0.79	2 (2%)	86,112,112	1.28	7 (8%)

In the following table, the Chirals column lists the number of chiral outliers, the number of chiral centers analysed, the number of these observed in the model and the number defined in the Chemical Component Dictionary. Similar counts are reported in the Torsion and Rings columns. '-' means no outliers of that kind were identified.

Mol	Type	Chain	Res	Link	Chirals	Torsions	Rings
3	A1JAZ	D	201	-	-	8/39/85/85	0/7/9/9
3	A1JAZ	C	201	-	-	3/39/85/85	0/7/9/9

All (3) bond length outliers are listed below:

Mol	Chain	Res	Type	Atoms	Z	Observed(Å)	Ideal(Å)
3	D	201	A1JAZ	C45-N9	4.68	1.37	1.32
3	C	201	A1JAZ	C14-N1	-2.99	1.45	1.47
3	C	201	A1JAZ	C4-C5	2.12	1.49	1.42

All (17) bond angle outliers are listed below:

Mol	Chain	Res	Type	Atoms	Z	Observed(°)	Ideal(°)
3	D	201	A1JAZ	C25-C26-N4	7.34	121.80	114.04
3	D	201	A1JAZ	O3-C23-C22	-6.85	95.33	110.16
3	C	201	A1JAZ	C26-N4-C33	5.43	129.04	122.37
3	D	201	A1JAZ	C26-N4-C33	4.87	128.35	122.37
3	D	201	A1JAZ	C8-C7-C4	3.31	121.94	117.89
3	D	201	A1JAZ	O6-S2-N6	3.19	113.57	107.13
3	C	201	A1JAZ	O6-S2-N6	3.04	113.27	107.13
3	D	201	A1JAZ	O6-S2-C39	-2.91	104.37	108.05
3	D	201	A1JAZ	C19-C20-N3	2.83	118.53	111.48
3	C	201	A1JAZ	C15-C14-N1	2.75	113.29	109.82
3	D	201	A1JAZ	O4-C33-N4	-2.43	120.23	122.55
3	C	201	A1JAZ	C27-N4-C26	-2.36	109.89	116.58
3	C	201	A1JAZ	C44-C39-S2	2.36	121.97	119.34
3	C	201	A1JAZ	O6-S2-C39	-2.27	105.18	108.05
3	C	201	A1JAZ	C8-C7-C4	2.21	120.59	117.89
3	D	201	A1JAZ	C15-C14-N1	-2.11	107.15	109.82
3	D	201	A1JAZ	C46-N11-C45	2.02	106.89	105.08

There are no chirality outliers.

All (11) torsion outliers are listed below:

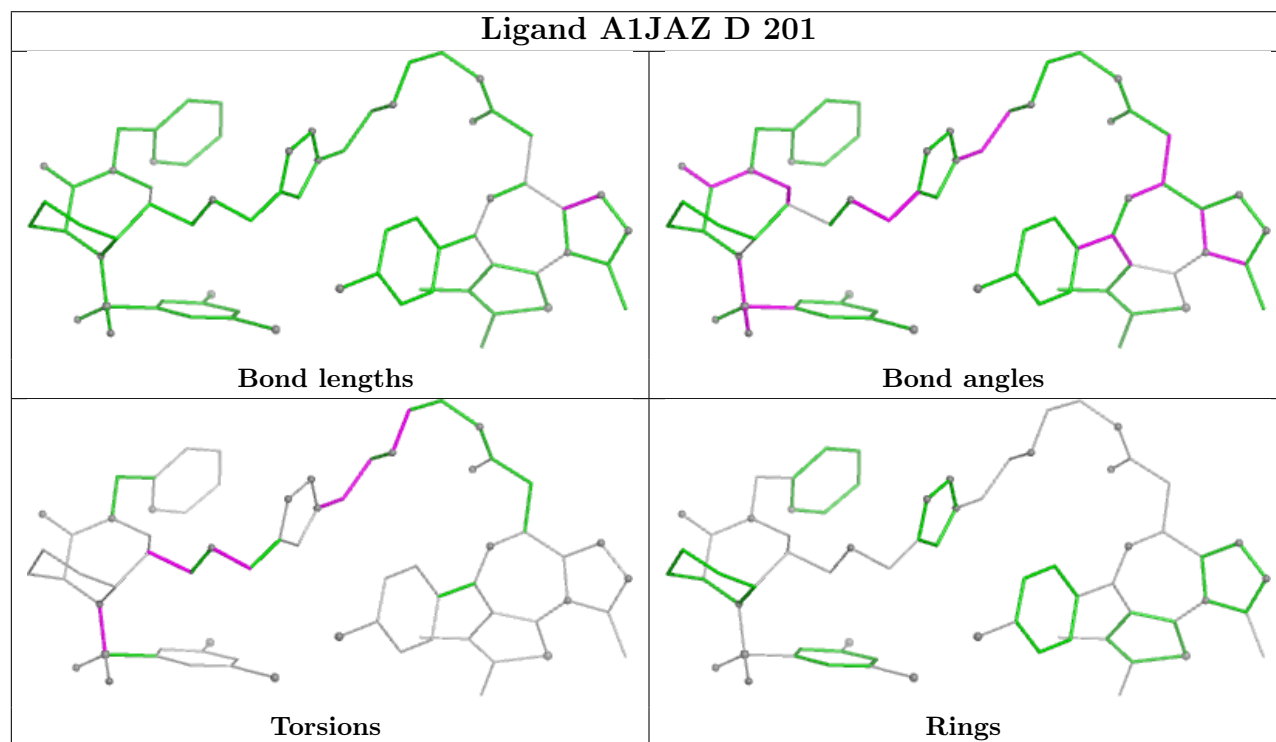
Mol	Chain	Res	Type	Atoms
3	D	201	A1JAZ	C22-C23-O3-C24
3	D	201	A1JAZ	O3-C24-C25-C26
3	D	201	A1JAZ	O3-C24-C25-C38
3	D	201	A1JAZ	C19-C20-N3-C21
3	D	201	A1JAZ	C17-C18-O2-C19
3	D	201	A1JAZ	C19-C20-N3-N8
3	C	201	A1JAZ	C34-N6-S2-O6
3	D	201	A1JAZ	C34-N6-S2-O6
3	D	201	A1JAZ	O2-C19-C20-N3
3	C	201	A1JAZ	N2-C17-C18-O2
3	C	201	A1JAZ	C34-N6-S2-C39

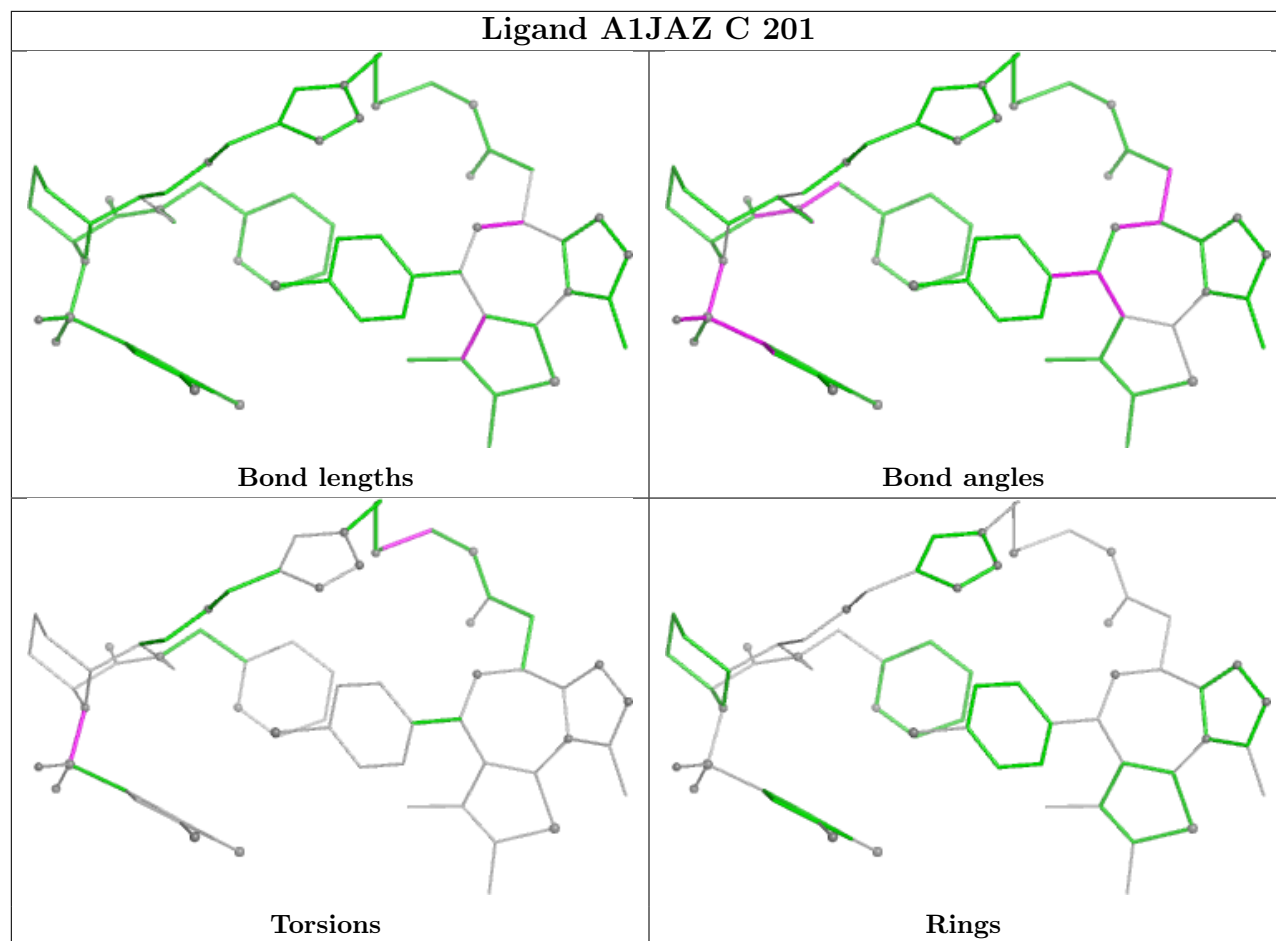
There are no ring outliers.

1 monomer is involved in 1 short contact:

Mol	Chain	Res	Type	Clashes	Symm-Clashes
3	C	201	A1JAZ	1	0

The following is a two-dimensional graphical depiction of Mogul quality analysis of bond lengths, bond angles, torsion angles, and ring geometry for all instances of the Ligand of Interest. In addition, ligands with molecular weight > 250 and outliers as shown on the validation Tables will also be included. For torsion angles, if less than 5% of the Mogul distribution of torsion angles is within 10 degrees of the torsion angle in question, then that torsion angle is considered an outlier. Any bond that is central to one or more torsion angles identified as an outlier by Mogul will be highlighted in the graph. For rings, the root-mean-square deviation (RMSD) between the ring in question and similar rings identified by Mogul is calculated over all ring torsion angles. If the average RMSD is greater than 60 degrees and the minimal RMSD between the ring in question and any Mogul-identified rings is also greater than 60 degrees, then that ring is considered an outlier. The outliers are highlighted in purple. The color gray indicates Mogul did not find sufficient equivalents in the CSD to analyse the geometry.





## 5.7 Other polymers [i](#)

There are no such residues in this entry.

## 5.8 Polymer linkage issues [i](#)

There are no chain breaks in this entry.

## 6 Fit of model and data [i](#)

### 6.1 Protein, DNA and RNA chains [i](#)

In the following table, the column labelled '#RSRZ > 2' contains the number (and percentage) of RSRZ outliers, followed by percent RSRZ outliers for the chain as percentile scores relative to all X-ray entries and entries of similar resolution. The OWAB column contains the minimum, median, 95<sup>th</sup> percentile and maximum values of the occupancy-weighted average B-factor per residue. The column labelled 'Q < 0.9' lists the number of (and percentage) of residues with an average occupancy less than 0.9.

Mol	Chain	Analysed	<RSRZ>	#RSRZ>2	OWAB(Å <sup>2</sup> )	Q<0.9
1	A	126/127 (99%)	-1.36	0 100 100	13, 19, 28, 31	0
1	B	126/127 (99%)	-1.30	0 100 100	11, 19, 31, 34	1 (0%)
2	C	107/107 (100%)	-1.19	0 100 100	17, 25, 38, 46	0
2	D	107/107 (100%)	-1.04	0 100 100	13, 33, 46, 57	1 (0%)
All	All	466/468 (99%)	-1.23	0 100 100	11, 23, 41, 57	2 (0%)

There are no RSRZ outliers to report.

### 6.2 Non-standard residues in protein, DNA, RNA chains [i](#)

There are no non-standard protein/DNA/RNA residues in this entry.

### 6.3 Carbohydrates [i](#)

There are no oligosaccharides in this entry.

### 6.4 Ligands [i](#)

In the following table, the Atoms column lists the number of modelled atoms in the group and the number defined in the chemical component dictionary. The B-factors column lists the minimum, median, 95<sup>th</sup> percentile and maximum values of B factors of atoms in the group. The column labelled 'Q < 0.9' lists the number of atoms with occupancy less than 0.9.

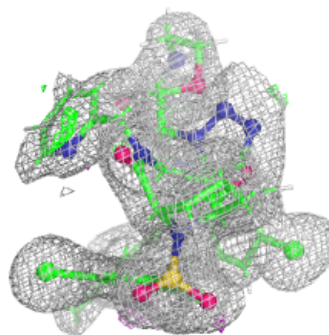
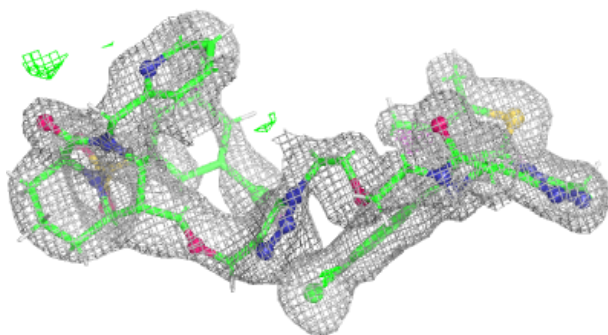
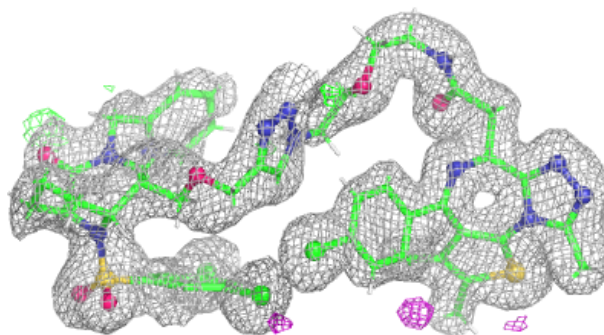
Mol	Type	Chain	Res	Atoms	RSCC	RSR	B-factors(Å <sup>2</sup> )	Q<0.9
3	A1JAZ	D	201	69/69	0.99	0.04	20,29,40,44	9
3	A1JAZ	C	201	69/69	0.99	0.03	15,19,30,30	9

The following is a graphical depiction of the model fit to experimental electron density of all

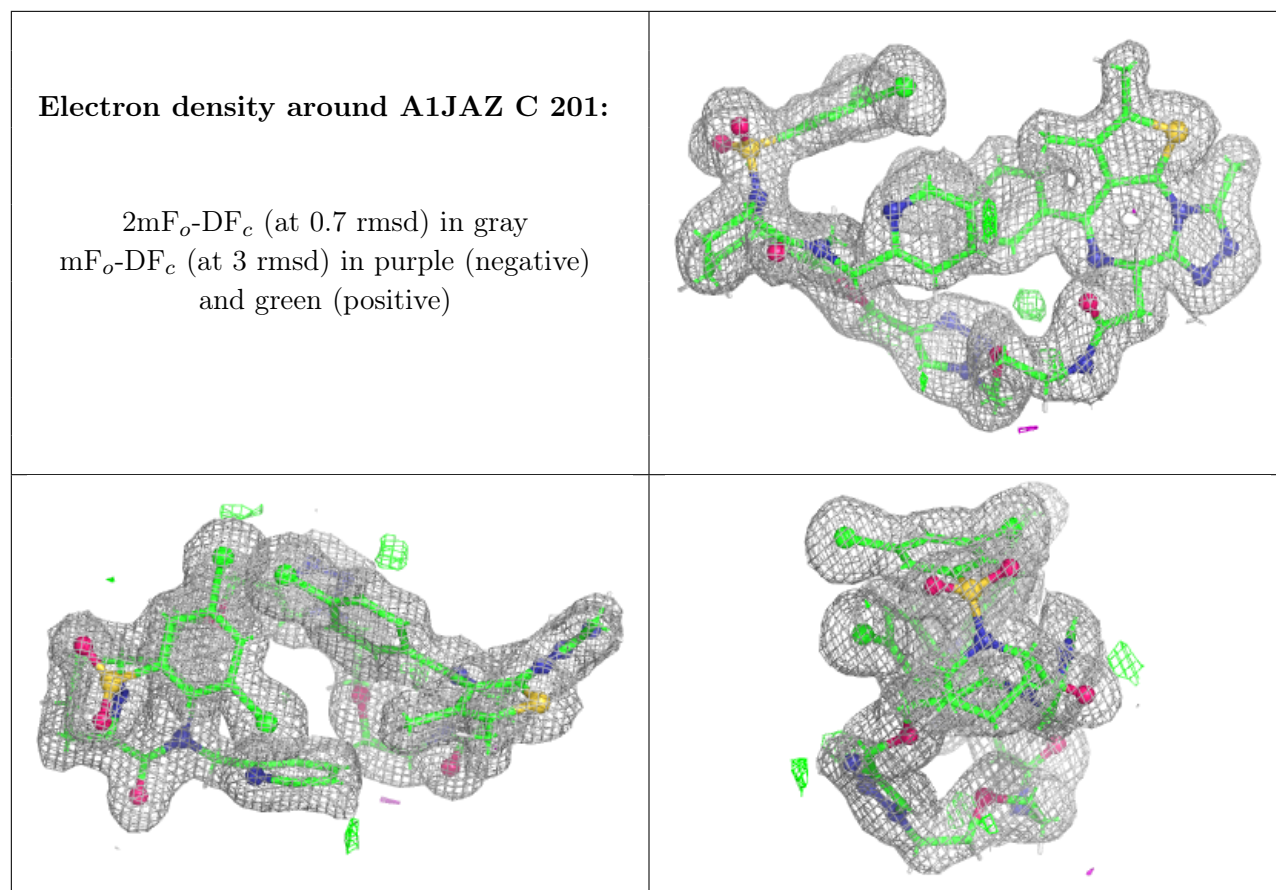
instances of the Ligand of Interest. In addition, ligands with molecular weight > 250 and outliers as shown on the geometry validation Tables will also be included. Each fit is shown from different orientation to approximate a three-dimensional view.

**Electron density around A1JAZ D 201:**

$2mF_o-DF_c$  (at 0.7 rmsd) in gray  
 $mF_o-DF_c$  (at 3 rmsd) in purple (negative)  
and green (positive)







## 6.5 Other polymers ⓘ

There are no such residues in this entry.