



Full wwPDB X-ray Structure Validation Report ⓘ

Apr 5, 2026 – 04:07 AM UTC

PDB ID : 9QOC / pdb_00009qoc
Title : APH(2'')-IVa with a fragment
Authors : Guichou, J.F.; Gelin, M.; Tomaszczyk, M.; Kowalewski, J.; Lionne, C.
Deposited on : 2025-03-26
Resolution : 1.99 Å(reported)

This is a Full wwPDB X-ray Structure Validation Report for a publicly released PDB entry.

We welcome your comments at validation@mail.wwpdb.org

A user guide is available at

<https://www.wwpdb.org/validation/2017/XrayValidationReportHelp>

with specific help available everywhere you see the ⓘ symbol.

The types of validation reports are described at

<http://www.wwpdb.org/validation/2017/FAQs#types>.

The following versions of software and data (see [references ⓘ](#)) were used in the production of this report:

MolProbity : 4-5-2 with Phenix2.0
Mogul : 2022.3.0, CSD as543be (2022)
Xtriage (Phenix) : 2.0
EDS : 3.0
Buster-report : wwPDB partial adaption of 1.1.7 (2018)
Percentile statistics : 20250101.v01 (using entries in the PDB archive January 1st 2025)
CCP4 : 9.0.010 (Gargrove)
Density-Fitness : 1.0.12
Ideal geometry (proteins) : Engh & Huber (2001)
Ideal geometry (DNA, RNA) : Parkinson et al. (1996)
Validation Pipeline (wwPDB-VP) : 2.49

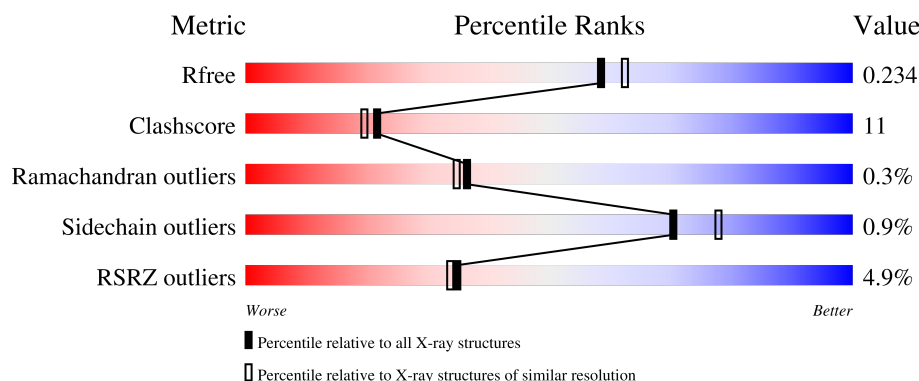
1 Overall quality at a glance

The following experimental techniques were used to determine the structure:

X-RAY DIFFRACTION


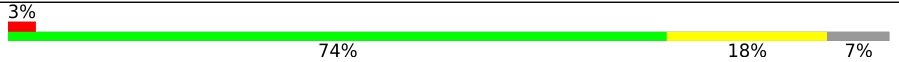
The reported resolution of this entry is 1.99 Å.

Percentile scores (ranging between 0-100) for global validation metrics of the entry are shown in the following graphic. The table shows the number of entries on which the scores are based.



Metric	Whole archive (#Entries)	Similar resolution (#Entries, resolution range(Å))
R_{free}	180053	10052 (2.00-2.00)
Clashscore	190562	11152 (2.00-2.00)
Ramachandran outliers	187476	11031 (2.00-2.00)
Sidechain outliers	187428	11029 (2.00-2.00)
RSRZ outliers	180081	10067 (2.00-2.00)

The table below summarises the geometric issues observed across the polymeric chains and their fit to the electron density. The red, orange, yellow and green segments of the lower bar indicate the fraction of residues that contain outliers for ≥ 3 , 2, 1 and 0 types of geometric quality criteria respectively. A grey segment represents the fraction of residues that are not modelled. The numeric value for each fraction is indicated below the corresponding segment, with a dot representing fractions $\leq 5\%$. The upper red bar (where present) indicates the fraction of residues that have poor fit to the electron density. The numeric value is given above the bar.

Mol	Chain	Length	Quality of chain
1	A	321	
1	B	321	

The following table lists non-polymeric compounds, carbohydrate monomers and non-standard residues in protein, DNA, RNA chains that are outliers for geometric or electron-density-fit criteria:

Mol	Type	Chain	Res	Chirality	Geometry	Clashes	Electron density
3	DMS	B	404	-	-	X	-

2 Entry composition

There are 4 unique types of molecules in this entry. The entry contains 5253 atoms, of which 48 are hydrogens and 0 are deuteriums.

In the tables below, the ZeroOcc column contains the number of atoms modelled with zero occupancy, the AltConf column contains the number of residues with at least one atom in alternate conformation and the Trace column contains the number of residues modelled with at most 2 atoms.

- Molecule 1 is a protein called APH(2'')-Id.

Mol	Chain	Residues	Atoms					ZeroOcc	AltConf	Trace
1	A	298	Total	C	N	O	S	3	6	0
			2488	1605	404	468	11			
1	B	297	Total	C	N	O	S	3	3	0
			2449	1576	398	465	10			

There are 40 discrepancies between the modelled and reference sequences:

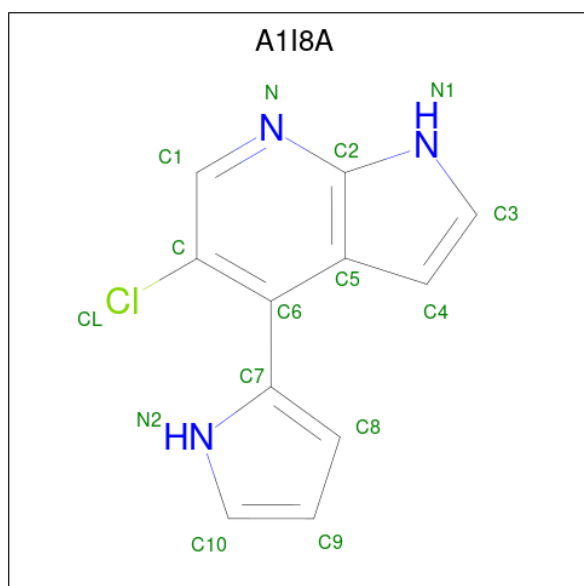
Chain	Residue	Modelled	Actual	Comment	Reference
A	-19	MET	-	initiating methionine	UNP O68183
A	-18	GLY	-	expression tag	UNP O68183
A	-17	SER	-	expression tag	UNP O68183
A	-16	SER	-	expression tag	UNP O68183
A	-15	HIS	-	expression tag	UNP O68183
A	-14	HIS	-	expression tag	UNP O68183
A	-13	HIS	-	expression tag	UNP O68183
A	-12	HIS	-	expression tag	UNP O68183
A	-11	HIS	-	expression tag	UNP O68183
A	-10	HIS	-	expression tag	UNP O68183
A	-9	SER	-	expression tag	UNP O68183
A	-8	SER	-	expression tag	UNP O68183
A	-7	GLY	-	expression tag	UNP O68183
A	-6	LEU	-	expression tag	UNP O68183
A	-5	VAL	-	expression tag	UNP O68183
A	-4	PRO	-	expression tag	UNP O68183
A	-3	ARG	-	expression tag	UNP O68183
A	-2	GLY	-	expression tag	UNP O68183
A	-1	SER	-	expression tag	UNP O68183
A	0	HIS	-	expression tag	UNP O68183
B	-19	MET	-	initiating methionine	UNP O68183
B	-18	GLY	-	expression tag	UNP O68183
B	-17	SER	-	expression tag	UNP O68183
B	-16	SER	-	expression tag	UNP O68183
B	-15	HIS	-	expression tag	UNP O68183

Continued on next page...

Continued from previous page...

Chain	Residue	Modelled	Actual	Comment	Reference
B	-14	HIS	-	expression tag	UNP O68183
B	-13	HIS	-	expression tag	UNP O68183
B	-12	HIS	-	expression tag	UNP O68183
B	-11	HIS	-	expression tag	UNP O68183
B	-10	HIS	-	expression tag	UNP O68183
B	-9	SER	-	expression tag	UNP O68183
B	-8	SER	-	expression tag	UNP O68183
B	-7	GLY	-	expression tag	UNP O68183
B	-6	LEU	-	expression tag	UNP O68183
B	-5	VAL	-	expression tag	UNP O68183
B	-4	PRO	-	expression tag	UNP O68183
B	-3	ARG	-	expression tag	UNP O68183
B	-2	GLY	-	expression tag	UNP O68183
B	-1	SER	-	expression tag	UNP O68183
B	0	HIS	-	expression tag	UNP O68183

- Molecule 2 is 5-chloranyl-4-(1 {H}-pyrrol-2-yl)-1 {H}-pyrrolo[2,3-b]pyridine (CCD ID: A1I8A) (formula: C₁₁H₈ClN₃) (labeled as "Ligand of Interest" by depositor).



Mol	Chain	Residues	Atoms				ZeroOcc	AltConf
2	A	1	Total	C	Cl	N	0	0
			15	11	1	3		
2	B	1	Total	C	Cl	N	0	0
			15	11	1	3		

- Molecule 3 is DIMETHYL SULFOXIDE (CCD ID: DMS) (formula: C₂H₆OS).



Mol	Chain	Residues	Atoms					ZeroOcc	AltConf
3	A	1	Total	C	H	O	S	0	0
			10	2	6	1	1		
3	A	1	Total	C	H	O	S	0	0
			10	2	6	1	1		
3	A	1	Total	C	H	O	S	0	0
			10	2	6	1	1		
3	A	1	Total	C	H	O	S	0	0
			10	2	6	1	1		
3	B	1	Total	C	H	O	S	0	0
			10	2	6	1	1		
3	B	1	Total	C	H	O	S	0	0
			10	2	6	1	1		
3	B	1	Total	C	H	O	S	0	0
			10	2	6	1	1		

- Molecule 4 is water.

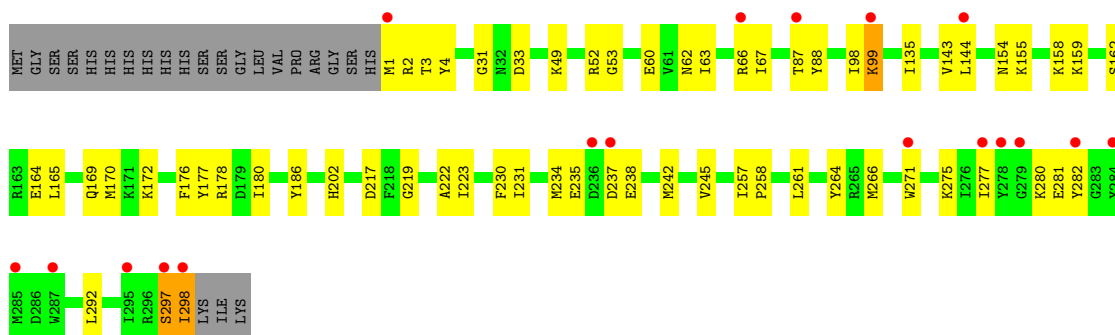
Mol	Chain	Residues	Atoms		ZeroOcc	AltConf
4	A	103	Total	O	0	0
			103	103		
4	B	103	Total	O	0	0
			103	103		

3 Residue-property plots [i](#)


These plots are drawn for all protein, RNA, DNA and oligosaccharide chains in the entry. The first graphic for a chain summarises the proportions of the various outlier classes displayed in the second graphic. The second graphic shows the sequence view annotated by issues in geometry and electron density. Residues are color-coded according to the number of geometric quality criteria for which they contain at least one outlier: green = 0, yellow = 1, orange = 2 and red = 3 or more. A red dot above a residue indicates a poor fit to the electron density ($RSRZ > 2$). Stretches of 2 or more consecutive residues without any outlier are shown as a green connector. Residues present in the sample, but not in the model, are shown in grey.

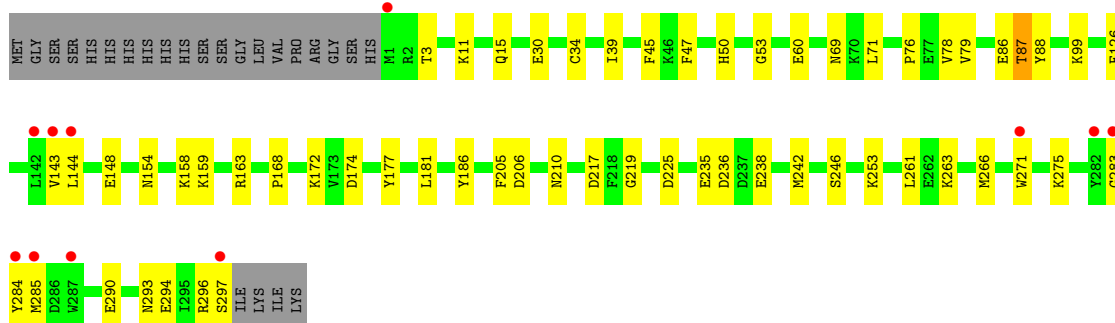
- Molecule 1: APH(2'')-Id

Chain A: 



- Molecule 1: APH(2'')-Id

Chain B: 



4 Data and refinement statistics

Property	Value	Source
Space group	P 1 21 1	Depositor
Cell constants a, b, c, α , β , γ	75.25Å 64.49Å 77.31Å 90.00° 91.57° 90.00°	Depositor
Resolution (Å)	48.96 – 1.99 48.96 – 1.99	Depositor EDS
% Data completeness (in resolution range)	98.3 (48.96-1.99) 98.4 (48.96-1.99)	Depositor EDS
R_{merge}	(Not available)	Depositor
R_{sym}	(Not available)	Depositor
$\langle I/\sigma(I) \rangle$ ¹	2.50 (at 2.00Å)	Xtriage
Refinement program	PHENIX (1.20.1_4487: ???)	Depositor
R, R_{free}	0.192 , 0.233 0.192 , 0.234	Depositor DCC
R_{free} test set	2501 reflections (4.92%)	wwPDB-VP
Wilson B-factor (Å ²)	37.6	Xtriage
Anisotropy	0.493	Xtriage
Bulk solvent k_{sol} (e/Å ³), B_{sol} (Å ²)	0.35 , 44.9	EDS
L-test for twinning ²	$\langle L \rangle = 0.50$, $\langle L^2 \rangle = 0.33$	Xtriage
Estimated twinning fraction	0.001 for l,k,-h 0.025 for h,-k,-l 0.015 for l,-k,h	Xtriage
F_o, F_c correlation	0.96	EDS
Total number of atoms	5253	wwPDB-VP
Average B, all atoms (Å ²)	48.0	wwPDB-VP

Xtriage's analysis on translational NCS is as follows: *The largest off-origin peak in the Patterson function is 5.61% of the height of the origin peak. No significant pseudotranslation is detected.*

¹Intensities estimated from amplitudes.

²Theoretical values of $\langle |L| \rangle$, $\langle L^2 \rangle$ for acentric reflections are 0.5, 0.333 respectively for untwinned datasets, and 0.375, 0.2 for perfectly twinned datasets.

5 Model quality

5.1 Standard geometry

Bond lengths and bond angles in the following residue types are not validated in this section: DMS, A1I8A

The Z score for a bond length (or angle) is the number of standard deviations the observed value is removed from the expected value. A bond length (or angle) with $|Z| > 5$ is considered an outlier worth inspection. RMSZ is the root-mean-square of all Z scores of the bond lengths (or angles).

Mol	Chain	Bond lengths		Bond angles	
		RMSZ	$\# Z > 5$	RMSZ	$\# Z > 5$
1	A	0.37	0/2561	0.52	0/3452
1	B	0.35	0/2511	0.53	0/3385
All	All	0.36	0/5072	0.53	0/6837

There are no bond length outliers.

There are no bond angle outliers.

There are no chirality outliers.

There are no planarity outliers.

5.2 Too-close contacts

In the following table, the Non-H and H(model) columns list the number of non-hydrogen atoms and hydrogen atoms in the chain respectively. The H(added) column lists the number of hydrogen atoms added and optimized by MolProbity. The Clashes column lists the number of clashes within the asymmetric unit, whereas Symm-Clashes lists symmetry-related clashes.

Mol	Chain	Non-H	H(model)	H(added)	Clashes	Symm-Clashes
1	A	2488	0	2439	57	0
1	B	2449	0	2388	50	0
2	A	15	0	0	0	0
2	B	15	0	0	1	0
3	A	16	24	24	2	0
3	B	16	24	24	7	0
4	A	103	0	0	2	0
4	B	103	0	0	2	0
All	All	5205	48	4875	107	0

The all-atom clashscore is defined as the number of clashes found per 1000 atoms (including hydrogen atoms). The all-atom clashscore for this structure is 11.

All (107) close contacts within the same asymmetric unit are listed below, sorted by their clash magnitude.

Atom-1	Atom-2	Interatomic distance (Å)	Clash overlap (Å)
1:B:242[A]:MET:HE2	1:B:261:LEU:HD11	1.46	0.96
1:B:78:VAL:HG12	3:B:404:DMS:H23	1.48	0.95
1:A:99[A]:LYS:HD2	1:A:99[A]:LYS:H	1.37	0.88
1:A:99[A]:LYS:H	1:A:99[A]:LYS:CD	1.83	0.87
1:B:168:PRO:O	1:B:172:LYS:HG2	1.78	0.83
1:B:79:VAL:C	3:B:404:DMS:H22	2.04	0.82
1:B:11:LYS:O	1:B:15:GLN:HG3	1.83	0.79
1:B:87:THR:HG23	1:B:88:TYR:CD1	2.21	0.76
1:B:159:LYS:O	1:B:159:LYS:HD2	1.86	0.76
1:B:87:THR:HG23	1:B:88:TYR:HD1	1.51	0.75
1:A:230:PHE:O	1:A:234:MET:HE3	1.87	0.74
1:B:271:TRP:CD1	1:B:275:LYS:HE2	2.23	0.73
1:A:158:LYS:HA	1:A:170:MET:HE1	1.72	0.71
1:A:178:ARG:HG2	1:A:178:ARG:HH11	1.55	0.71
1:B:86:GLU:O	1:B:87:THR:HG22	1.89	0.70
1:A:234:MET:HE2	1:A:245:VAL:HG11	1.72	0.70
1:B:296:ARG:O	1:B:297:SER:HB2	1.94	0.67
1:A:230:PHE:C	1:A:234:MET:HE3	2.19	0.67
1:A:297:SER:C	1:A:298:ILE:HG22	2.20	0.66
1:B:290:GLU:O	1:B:294:GLU:HG3	1.97	0.64
1:A:176:PHE:CZ	1:A:180:ILE:HD11	2.33	0.63
1:A:33[A]:ASP:HB2	1:A:53:GLY:HA3	1.79	0.63
1:B:158:LYS:HE3	1:B:174:ASP:OD1	1.99	0.62
1:A:158:LYS:HG2	1:A:170:MET:HE3	1.80	0.61
1:A:242:MET:HE2	1:A:261:LEU:HD21	1.83	0.60
1:A:33[A]:ASP:HB2	1:A:53:GLY:CA	2.32	0.60
1:A:1:MET:HE1	1:A:282:TYR:O	2.02	0.59
1:A:87:THR:HG23	1:A:88:TYR:CD1	2.38	0.57
1:A:297:SER:O	1:A:298:ILE:HG22	2.04	0.57
1:A:235:GLU:OE2	1:A:238:GLU:N	2.38	0.57
1:B:159:LYS:HD2	1:B:159:LYS:C	2.30	0.56
1:B:154:ASN:HD22	1:B:177:TYR:CB	2.19	0.55
1:B:60:GLU:HB2	1:B:219:GLY:HA2	1.88	0.55
1:B:3:THR:HB	4:B:532:HOH:O	2.06	0.55
1:B:235:GLU:HG2	1:B:238:GLU:H	1.71	0.55
1:A:99[A]:LYS:HD3	4:A:548:HOH:O	2.07	0.54
1:B:242[A]:MET:CE	1:B:261:LEU:HD11	2.28	0.54
1:A:3:THR:CG2	3:A:402:DMS:H23	2.38	0.54
1:B:79:VAL:CA	3:B:404:DMS:H22	2.38	0.53
1:A:277:ILE:O	1:A:281:GLU:HG3	2.09	0.52

Continued on next page...

Continued from previous page...

Atom-1	Atom-2	Interatomic distance (Å)	Clash overlap (Å)
1:B:78:VAL:O	3:B:404:DMS:H21	2.11	0.51
1:A:178:ARG:HG2	1:A:178:ARG:NH1	2.23	0.51
1:A:280:LYS:O	1:A:280:LYS:HG3	2.11	0.50
1:A:237:ASP:O	1:A:238:GLU:HG2	2.10	0.50
1:B:78:VAL:HG12	3:B:404:DMS:C2	2.31	0.50
1:A:158:LYS:HG2	1:A:170:MET:CE	2.42	0.49
1:A:154:ASN:ND2	1:A:177:TYR:HB3	2.28	0.49
1:B:30:GLU:O	3:B:402:DMS:H13	2.13	0.49
1:A:52:ARG:NH1	1:A:282:TYR:HE1	2.11	0.48
1:B:163:ARG:HH11	1:B:163:ARG:HG3	1.77	0.48
1:B:144:LEU:HD23	1:B:144:LEU:N	2.29	0.48
1:A:144:LEU:HD13	1:A:222:ALA:HB1	1.95	0.48
1:A:62:ASN:O	1:A:66[B]:ARG:HG3	2.13	0.48
1:A:158:LYS:O	1:A:162:SER:HB3	2.14	0.47
1:A:235:GLU:OE2	1:A:235:GLU:C	2.57	0.47
1:A:172:LYS:HA	1:A:172:LYS:HD2	1.69	0.47
1:A:31:GLY:O	1:A:49:LYS:NZ	2.21	0.47
1:B:86:GLU:O	1:B:87:THR:CG2	2.61	0.47
1:B:99:LYS:NZ	1:B:206:ASP:OD2	2.48	0.47
1:B:205:PHE:CZ	1:B:210:ASN:HA	2.50	0.47
1:A:231:ILE:HG23	1:A:264:TYR:HD1	1.79	0.47
1:A:3:THR:HG23	3:A:402:DMS:H23	1.96	0.46
1:B:143:VAL:C	1:B:144:LEU:HD23	2.40	0.46
1:B:242[A]:MET:HE3	1:B:246:SER:OG	2.15	0.46
1:A:202:HIS:ND1	1:A:217:ASP:OD2	2.48	0.46
1:B:71:LEU:HD13	1:B:126:PHE:CE1	2.50	0.46
1:A:186:TYR:CZ	1:A:266:MET:HG3	2.51	0.46
1:A:235:GLU:OE2	1:A:238:GLU:HB2	2.15	0.46
1:A:98:ILE:HA	1:A:99[A]:LYS:HE3	1.98	0.46
1:A:164:GLU:CD	1:A:292:LEU:HD21	2.40	0.46
1:B:158:LYS:HE3	1:B:174:ASP:CG	2.41	0.46
1:A:186:TYR:CE1	1:A:266:MET:HG3	2.51	0.45
1:B:79:VAL:O	3:B:404:DMS:H22	2.17	0.45
1:A:60:GLU:HB2	1:A:219:GLY:HA2	1.99	0.45
1:B:87:THR:CG2	1:B:88:TYR:CD1	2.95	0.45
1:A:297:SER:C	1:A:298:ILE:N	2.75	0.44
1:B:217:ASP:OD1	2:B:401:A1I8A:N2	2.49	0.44
1:B:177:TYR:O	1:B:181:LEU:HD12	2.17	0.44
1:A:62:ASN:O	1:A:66[A]:ARG:HG3	2.18	0.44
1:B:293:ASN:O	1:B:296:ARG:O	2.35	0.44
1:A:178:ARG:NH1	1:A:178:ARG:CG	2.82	0.43

Continued on next page...

Continued from previous page...

Atom-1	Atom-2	Interatomic distance (Å)	Clash overlap (Å)
1:B:159:LYS:C	1:B:159:LYS:CD	2.91	0.43
1:B:186:TYR:CZ	1:B:266:MET:HG3	2.54	0.43
1:A:99[A]:LYS:CD	4:A:548:HOH:O	2.65	0.43
1:B:271:TRP:NE1	1:B:275:LYS:HE2	2.33	0.43
1:A:143:VAL:HA	1:A:223:ILE:HB	2.01	0.43
1:B:50:HIS:HD1	1:B:53:GLY:H	1.65	0.43
1:A:2:ARG:HD3	1:A:4:TYR:CZ	2.55	0.42
1:B:225:ASP:OD2	1:B:263:LYS:NZ	2.44	0.42
1:B:34:CYS:HB3	1:B:47:PHE:O	2.20	0.42
1:A:155:LYS:O	1:A:159:LYS:HG3	2.20	0.42
1:B:283:GLY:O	1:B:285:MET:N	2.52	0.42
1:B:11:LYS:HA	1:B:11:LYS:HD3	1.80	0.42
1:B:253:LYS:HE3	1:B:253:LYS:HB3	1.73	0.42
1:B:148:GLU:OE1	1:B:148:GLU:HA	2.20	0.42
1:A:158:LYS:HA	1:A:170:MET:CE	2.47	0.41
1:A:165:LEU:HB3	1:A:169:GLN:HB2	2.02	0.41
1:A:257:ILE:N	1:A:258:PRO:CD	2.84	0.41
1:A:63:ILE:O	1:A:67:ILE:HG12	2.20	0.41
1:A:135:ILE:H	1:A:135:ILE:HG13	1.69	0.41
1:B:39:ILE:HD12	1:B:45:PHE:CD1	2.55	0.41
1:A:164:GLU:OE1	1:A:292:LEU:HD21	2.21	0.41
1:A:271:TRP:CD1	1:A:275:LYS:HE2	2.56	0.41
1:A:2:ARG:HG2	1:A:88:TYR:OH	2.22	0.41
1:B:86:GLU:O	1:B:87:THR:CB	2.69	0.40
1:B:76:PRO:HG2	4:B:537:HOH:O	2.20	0.40

There are no symmetry-related clashes.

5.3 Torsion angles

5.3.1 Protein backbone

In the following table, the Percentiles column shows the percent Ramachandran outliers of the chain as a percentile score with respect to all X-ray entries followed by that with respect to entries of similar resolution.

The Analysed column shows the number of residues for which the backbone conformation was analysed, and the total number of residues.

Mol	Chain	Analysed	Favoured	Allowed	Outliers	Percentiles	
1	A	301/321 (94%)	291 (97%)	10 (3%)	0	100	100

Continued on next page...

Continued from previous page...

Mol	Chain	Analysed	Favoured	Allowed	Outliers	Percentiles	
1	B	298/321 (93%)	288 (97%)	8 (3%)	2 (1%)	18	14
All	All	599/642 (93%)	579 (97%)	18 (3%)	2 (0%)	36	35

All (2) Ramachandran outliers are listed below:

Mol	Chain	Res	Type
1	B	284	TYR
1	B	87	THR

5.3.2 Protein sidechains ⓘ

In the following table, the Percentiles column shows the percent sidechain outliers of the chain as a percentile score with respect to all X-ray entries followed by that with respect to entries of similar resolution.

The Analysed column shows the number of residues for which the sidechain conformation was analysed, and the total number of residues.

Mol	Chain	Analysed	Rotameric	Outliers	Percentiles	
1	A	276/296 (93%)	272 (99%)	4 (1%)	59	66
1	B	270/296 (91%)	268 (99%)	2 (1%)	76	82
All	All	546/592 (92%)	540 (99%)	6 (1%)	70	73

All (6) residues with a non-rotameric sidechain are listed below:

Mol	Chain	Res	Type
1	A	99[A]	LYS
1	A	99[B]	LYS
1	A	297	SER
1	A	298	ILE
1	B	69	ASN
1	B	236	ASP

Sometimes sidechains can be flipped to improve hydrogen bonding and reduce clashes. All (7) such sidechains are listed below:

Mol	Chain	Res	Type
1	A	62	ASN
1	A	68	HIS
1	A	151	ASN

Continued on next page...

Continued from previous page...

Mol	Chain	Res	Type
1	A	154	ASN
1	B	69	ASN
1	B	117	ASN
1	B	250	ASN

5.3.3 RNA [i](#)

There are no RNA molecules in this entry.

5.4 Non-standard residues in protein, DNA, RNA chains [i](#)

There are no non-standard protein/DNA/RNA residues in this entry.

5.5 Carbohydrates [i](#)

There are no oligosaccharides in this entry.

5.6 Ligand geometry [i](#)

10 ligands are modelled in this entry.

In the following table, the Counts columns list the number of bonds (or angles) for which Mogul statistics could be retrieved, the number of bonds (or angles) that are observed in the model and the number of bonds (or angles) that are defined in the Chemical Component Dictionary. The Link column lists molecule types, if any, to which the group is linked. The Z score for a bond length (or angle) is the number of standard deviations the observed value is removed from the expected value. A bond length (or angle) with $|Z| > 2$ is considered an outlier worth inspection. RMSZ is the root-mean-square of all Z scores of the bond lengths (or angles).

Mol	Type	Chain	Res	Link	Bond lengths			Bond angles		
					Counts	RMSZ	$\# Z > 2$	Counts	RMSZ	$\# Z > 2$
2	A1I8A	A	401	-	17,17,17	0.24	0	22,24,24	0.57	0
3	DMS	B	404	-	3,3,3	0.56	0	3,3,3	0.51	0
3	DMS	B	405	-	3,3,3	0.69	0	3,3,3	0.82	0
3	DMS	A	403	-	3,3,3	0.63	0	3,3,3	0.88	0
3	DMS	B	403	-	3,3,3	0.68	0	3,3,3	0.30	0
2	A1I8A	B	401	-	17,17,17	0.29	0	22,24,24	0.57	0
3	DMS	A	404	-	3,3,3	0.73	0	3,3,3	0.72	0
3	DMS	B	402	-	3,3,3	0.60	0	3,3,3	0.99	0
3	DMS	A	405	-	3,3,3	0.72	0	3,3,3	0.73	0
3	DMS	A	402	-	3,3,3	0.68	0	3,3,3	0.58	0

In the following table, the Chirals column lists the number of chiral outliers, the number of chiral centers analysed, the number of these observed in the model and the number defined in the Chemical Component Dictionary. Similar counts are reported in the Torsion and Rings columns. '-' means no outliers of that kind were identified.

Mol	Type	Chain	Res	Link	Chirals	Torsions	Rings
2	A1I8A	A	401	-	-	1/4/4/4	0/3/3/3
2	A1I8A	B	401	-	-	0/4/4/4	0/3/3/3

There are no bond length outliers.

There are no bond angle outliers.

There are no chirality outliers.

All (1) torsion outliers are listed below:

Mol	Chain	Res	Type	Atoms
2	A	401	A1I8A	C5-C6-C7-C8

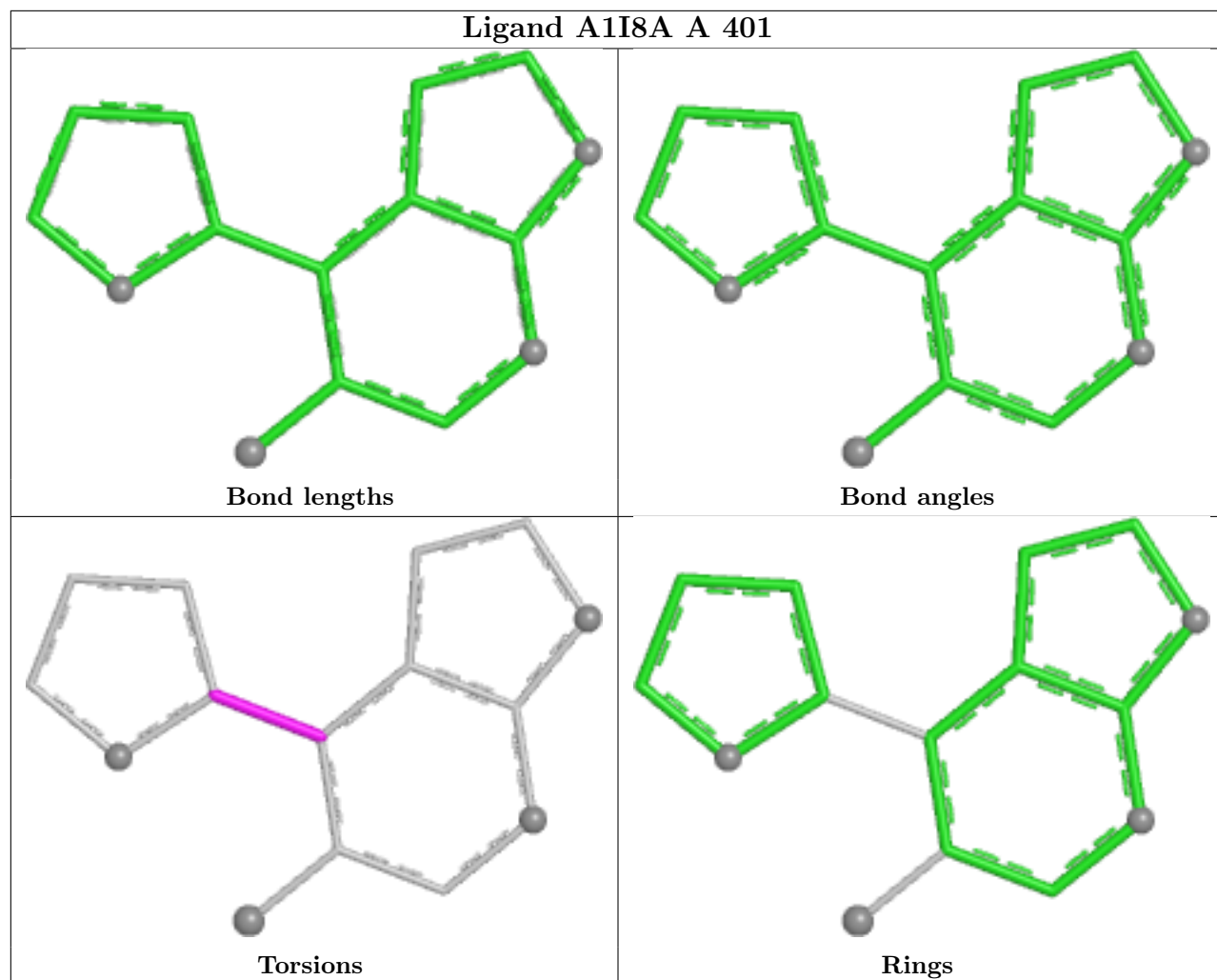
There are no ring outliers.

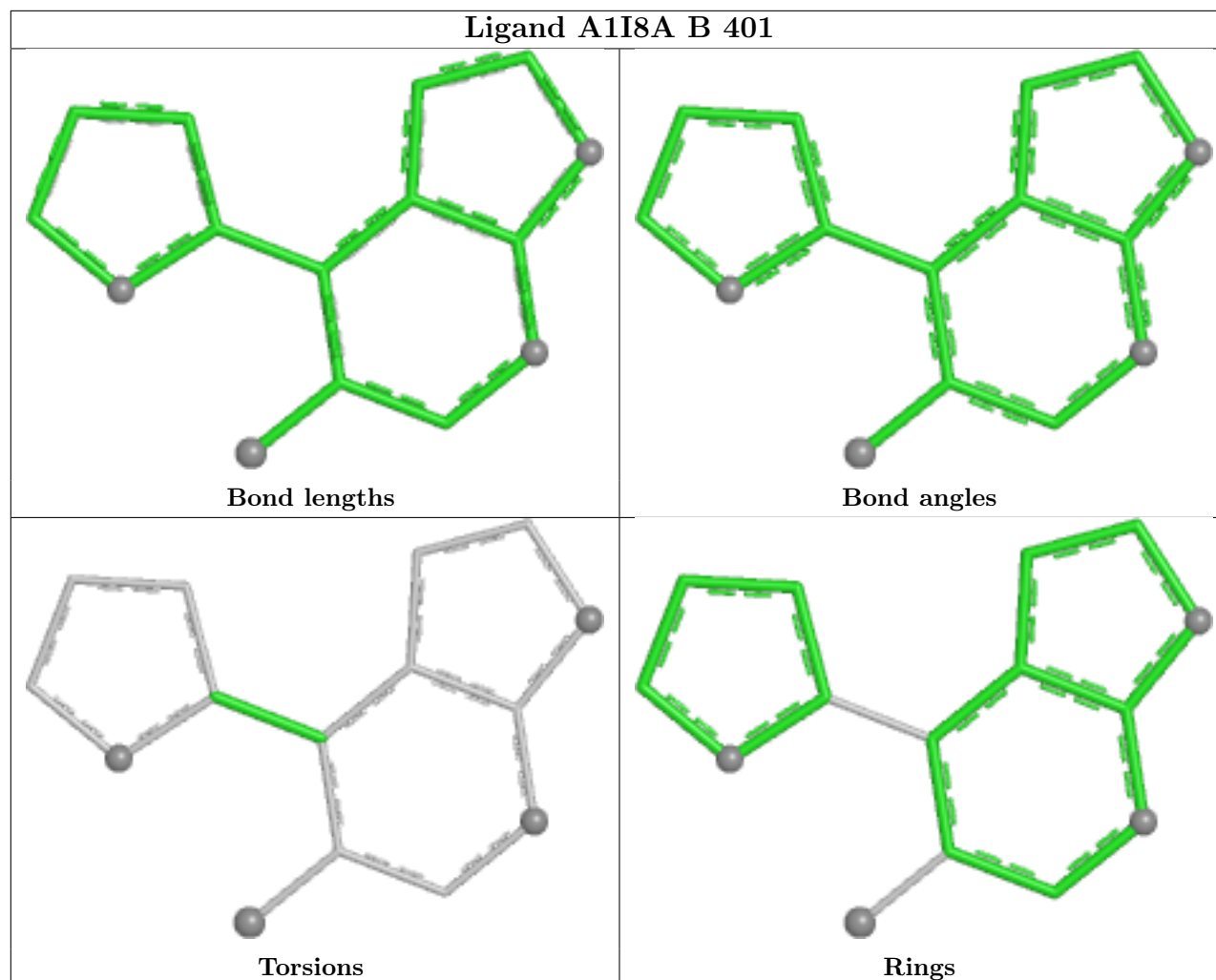
4 monomers are involved in 10 short contacts:

Mol	Chain	Res	Type	Clashes	Symm-Clashes
3	B	404	DMS	6	0
2	B	401	A1I8A	1	0
3	B	402	DMS	1	0
3	A	402	DMS	2	0

The following is a two-dimensional graphical depiction of Mogul quality analysis of bond lengths, bond angles, torsion angles, and ring geometry for all instances of the Ligand of Interest. In addition, ligands with molecular weight > 250 and outliers as shown on the validation Tables will also be included. For torsion angles, if less than 5% of the Mogul distribution of torsion angles is within 10 degrees of the torsion angle in question, then that torsion angle is considered an outlier. Any bond that is central to one or more torsion angles identified as an outlier by Mogul will be highlighted in the graph. For rings, the root-mean-square deviation (RMSD) between the ring in question and similar rings identified by Mogul is calculated over all ring torsion angles. If the average RMSD is greater than 60 degrees and the minimal RMSD between the ring in question and any Mogul-identified rings is also greater than 60 degrees, then that ring is considered an outlier. The outliers are highlighted in purple. The color gray indicates Mogul did not find sufficient equivalents in the CSD to analyse the geometry.

Ligand A1I8A A 401





5.7 Other polymers [i](#)

There are no such residues in this entry.

5.8 Polymer linkage issues [i](#)

The following chains have linkage breaks:

Mol	Chain	Number of breaks
1	A	1

All chain breaks are listed below:

Model	Chain	Residue-1	Atom-1	Residue-2	Atom-2	Distance (Å)
1	A	297:SER	C	298:ILE	N	2.75

6 Fit of model and data [i](#)

6.1 Protein, DNA and RNA chains [i](#)

In the following table, the column labelled ‘#RSRZ > 2’ contains the number (and percentage) of RSRZ outliers, followed by percent RSRZ outliers for the chain as percentile scores relative to all X-ray entries and entries of similar resolution. The OWAB column contains the minimum, median, 95th percentile and maximum values of the occupancy-weighted average B-factor per residue. The column labelled ‘Q < 0.9’ lists the number of (and percentage) of residues with an average occupancy less than 0.9.

Mol	Chain	Analysed	<RSRZ>	#RSRZ>2	OWAB(Å ²)	Q<0.9
1	A	298/321 (92%)	0.44	18 (6%) 27 26	23, 45, 77, 123	8 (2%)
1	B	297/321 (92%)	0.33	11 (3%) 45 44	24, 46, 70, 90	6 (2%)
All	All	595/642 (92%)	0.39	29 (4%) 35 34	23, 45, 74, 123	14 (2%)

All (29) RSRZ outliers are listed below:

Mol	Chain	Res	Type	RSRZ
1	A	298	ILE	4.7
1	A	287	TRP	4.6
1	B	287	TRP	4.1
1	A	278	TYR	4.0
1	A	271	TRP	3.9
1	B	271	TRP	3.5
1	A	284	TYR	3.4
1	B	282	TYR	3.1
1	A	1	MET	3.1
1	A	285	MET	3.0
1	A	99[A]	LYS	3.0
1	B	284	TYR	3.0
1	A	282	TYR	2.8
1	B	142	LEU	2.8
1	B	144	LEU	2.7
1	A	144	LEU	2.6
1	B	297	SER	2.6
1	B	285	MET	2.5
1	A	236	ASP	2.5
1	A	297	SER	2.4
1	A	295	ILE	2.4
1	A	279	GLY	2.3
1	A	87	THR	2.3
1	A	237	ASP	2.2

Continued on next page...

Continued from previous page...

Mol	Chain	Res	Type	RSRZ
1	A	277	ILE	2.2
1	A	66[A]	ARG	2.1
1	B	1	MET	2.1
1	B	283	GLY	2.0
1	B	143	VAL	2.0

6.2 Non-standard residues in protein, DNA, RNA chains [i](#)

There are no non-standard protein/DNA/RNA residues in this entry.

6.3 Carbohydrates [i](#)

There are no oligosaccharides in this entry.

6.4 Ligands [i](#)

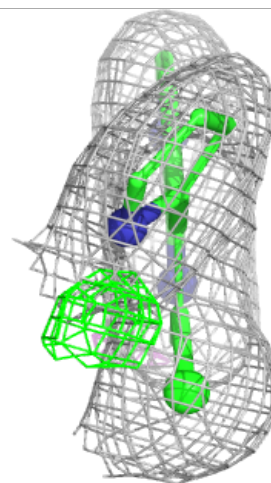
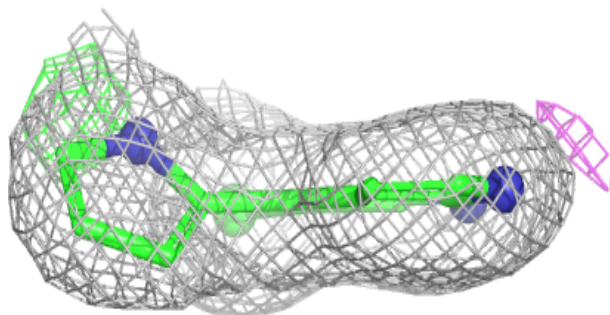
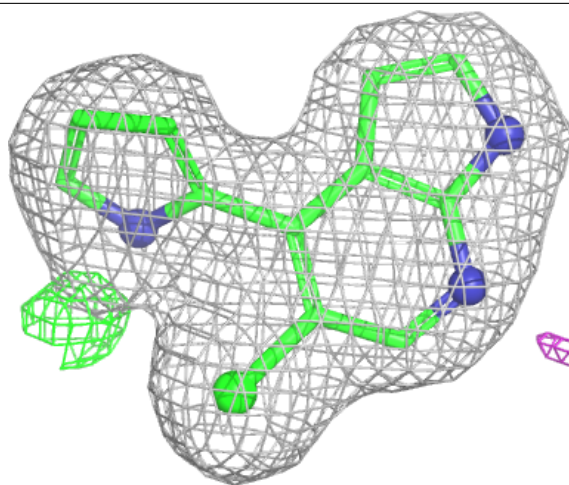
In the following table, the Atoms column lists the number of modelled atoms in the group and the number defined in the chemical component dictionary. The B-factors column lists the minimum, median, 95th percentile and maximum values of B factors of atoms in the group. The column labelled 'Q< 0.9' lists the number of atoms with occupancy less than 0.9.

Mol	Type	Chain	Res	Atoms	RSCC	RSR	B-factors(\AA^2)	Q<0.9
3	DMS	A	404	4/4	0.68	0.20	55,66,68,69	0
3	DMS	A	405	4/4	0.81	0.15	62,75,90,90	0
3	DMS	B	405	4/4	0.82	0.15	54,65,75,75	0
3	DMS	B	404	4/4	0.84	0.21	54,64,64,66	0
3	DMS	B	402	4/4	0.84	0.17	48,58,61,61	0
3	DMS	B	403	4/4	0.89	0.15	50,60,63,63	10
3	DMS	A	403	4/4	0.90	0.16	50,60,61,63	0
3	DMS	A	402	4/4	0.91	0.11	49,59,71,71	0
2	A1I8A	A	401	15/15	0.98	0.06	33,35,37,39	0
2	A1I8A	B	401	15/15	0.98	0.06	33,34,37,38	0

The following is a graphical depiction of the model fit to experimental electron density of all instances of the Ligand of Interest. In addition, ligands with molecular weight > 250 and outliers as shown on the geometry validation Tables will also be included. Each fit is shown from different orientation to approximate a three-dimensional view.

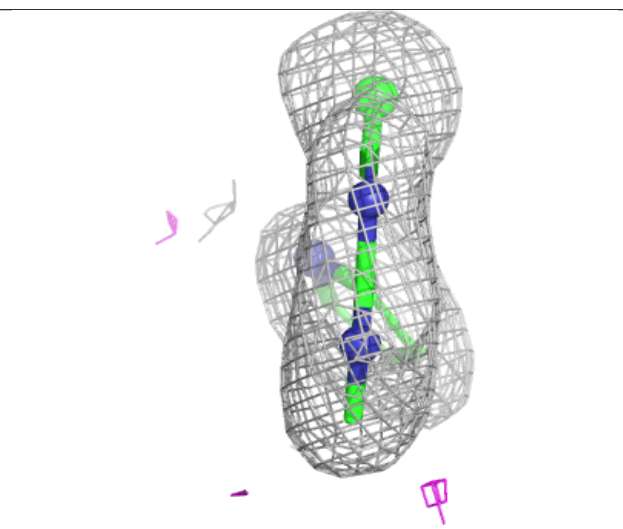
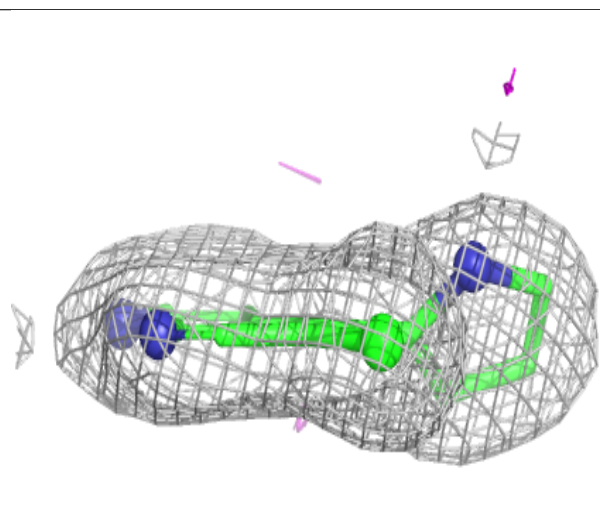
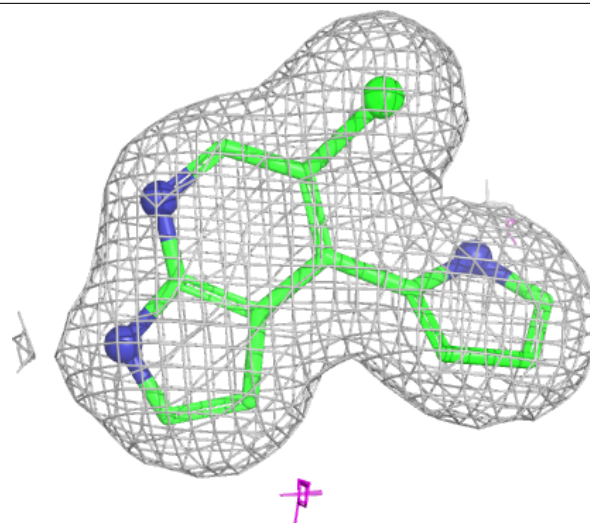
Electron density around A1I8A A 401:

$2mF_o-DF_c$ (at 0.7 rmsd) in gray
 mF_o-DF_c (at 3 rmsd) in purple (negative)
and green (positive)



Electron density around A1I8A B 401:

$2mF_o-DF_c$ (at 0.7 rmsd) in gray
 mF_o-DF_c (at 3 rmsd) in purple (negative)
and green (positive)



6.5 Other polymers [i](#)

There are no such residues in this entry.