



wwPDB EM Validation Summary Report ⓘ

Apr 5, 2026 – 09:49 PM UTC

PDB ID : 9QH6 / pdb_00009qh6
EMDB ID : EMD-53156
Title : NorQ in complex with NorD VWA domain from *Paracoccus denitrificans*
Authors : Kahle, M.; Appelgren, S.; Carroni, M.; Adelroth, P.; Wendler, P.
Deposited on : 2025-03-14
Resolution : 3.20 Å (reported)
Based on initial model : .

This is a wwPDB EM Validation Summary Report for a publicly released PDB entry.

We welcome your comments at validation@mail.wwpdb.org

A user guide is available at

<https://www.wwpdb.org/validation/2017/EMValidationReportHelp>
with specific help available everywhere you see the ⓘ symbol.

The types of validation reports are described at

<http://www.wwpdb.org/validation/2017/FAQs#types>.

The following versions of software and data (see [references ⓘ](#)) were used in the production of this report:

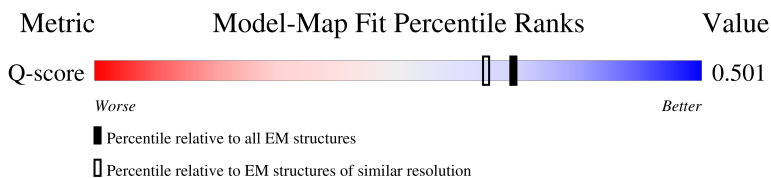
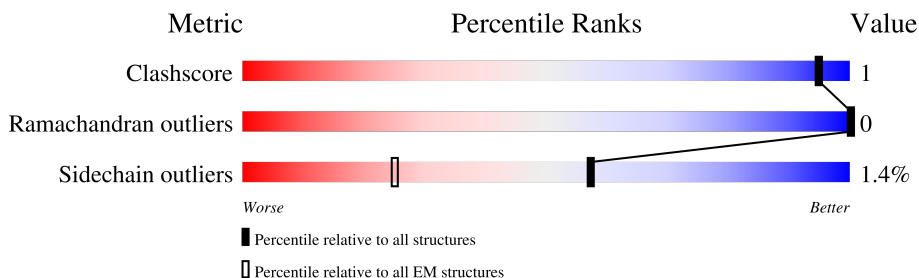
EMDB validation analysis : 0.0.1.dev132
Mogul : 2022.3.0, CSD as543be (2022)
MolProbity : 4-5-2 with Phenix2.0
Buster-report : wwPDB partial adaption of 1.1.7 (2018)
Percentile statistics : 20250101.v01 (using entries in the PDB archive January 1st 2025)
EM percentile statistics : 202505.v01 (Using data in the EMDb archive up until May 2025)
MapQ : 1.9.13
Ideal geometry (proteins) : Engh & Huber (2001)
Ideal geometry (DNA, RNA) : Parkinson et al. (1996)
Validation Pipeline (wwPDB-VP) : 2.49

1 Overall quality at a glance

The following experimental techniques were used to determine the structure:
ELECTRON MICROSCOPY

The reported resolution of this entry is 3.20 Å.

Percentile scores (ranging between 0-100) for global validation metrics of the entry are shown in the following graphic. The table shows the number of entries on which the scores are based.






Metric	Whole archive (#Entries)	EM structures (#Entries)	Similar EM resolution (#Entries, resolution range(Å))
Clashscore	229148	23984	-
Ramachandran outliers	224038	23583	-
Sidechain outliers	223484	23102	-
Q-score	-	25397	15020 (2.70 - 3.70)

The table below summarises the geometric issues observed across the polymeric chains and their fit to the map. The red, orange, yellow and green segments of the bar indicate the fraction of residues that contain outliers for ≥ 3 , 2, 1 and 0 types of geometric quality criteria respectively. A grey segment represents the fraction of residues that are not modelled. The numeric value for each fraction is indicated below the corresponding segment, with a dot representing fractions $\leq 5\%$. The upper red bar (where present) indicates the fraction of residues that have poor fit to the EM map (all-atom inclusion $< 40\%$). The numeric value is given above the bar.

Mol	Chain	Length	Quality of chain
1	A	270	 93% 6%
1	B	270	 93% 5%
1	C	270	 91% 5%
1	D	270	 89% 5% 6%

Continued on next page...

Continued from previous page...

Mol	Chain	Length	Quality of chain
1	E	270	 91% • 5%
1	F	270	 88% 6% 6%
2	G	638	 42% • 55%

2 Entry composition

There are 5 unique types of molecules in this entry. The entry contains 13496 atoms, of which 0 are hydrogens and 0 are deuteriums.

In the tables below, the AltConf column contains the number of residues with at least one atom in alternate conformation and the Trace column contains the number of residues modelled with at most 2 atoms.

- Molecule 1 is a protein called Protein NorQ.

Mol	Chain	Residues	Atoms					AltConf	Trace
1	A	255	Total	C	N	O	S	0	0
			1897	1205	342	342	8		
1	B	257	Total	C	N	O	S	0	0
			1933	1222	350	353	8		
1	C	256	Total	C	N	O	S	0	0
			1917	1217	348	344	8		
1	D	255	Total	C	N	O	S	0	0
			1929	1219	351	351	8		
1	E	257	Total	C	N	O	S	0	0
			1894	1203	343	340	8		
1	F	253	Total	C	N	O	S	0	0
			1812	1148	330	326	8		

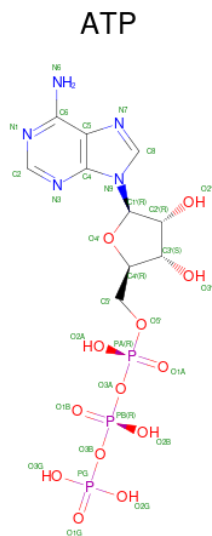
There are 6 discrepancies between the modelled and reference sequences:

Chain	Residue	Modelled	Actual	Comment	Reference
A	109	GLN	GLU	engineered mutation	UNP Q51664
B	109	GLN	GLU	engineered mutation	UNP Q51664
C	109	GLN	GLU	engineered mutation	UNP Q51664
D	109	GLN	GLU	engineered mutation	UNP Q51664
E	109	GLN	GLU	engineered mutation	UNP Q51664
F	109	GLN	GLU	engineered mutation	UNP Q51664

- Molecule 2 is a protein called von Willebrand factor, type A.

Mol	Chain	Residues	Atoms					AltConf	Trace
2	G	286	Total	C	N	O	S	0	0
			1964	1235	382	344	3		

- Molecule 3 is ADENOSINE-5'-TRIPHOSPHATE (CCD ID: ATP) (formula: $C_{10}H_{16}N_5O_{13}P_3$).

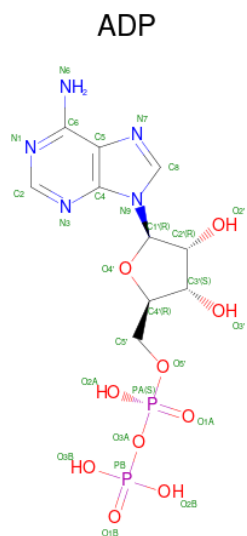


Mol	Chain	Residues	Atoms					AltConf
3	A	1	Total 31	C 10	N 5	O 13	P 3	0
3	B	1	Total 31	C 10	N 5	O 13	P 3	0
3	C	1	Total 31	C 10	N 5	O 13	P 3	0

- Molecule 4 is MAGNESIUM ION (CCD ID: MG) (formula: Mg).

Mol	Chain	Residues	Atoms	AltConf
4	A	1	Total Mg 1 1	0
4	B	1	Total Mg 1 1	0
4	C	1	Total Mg 1 1	0

- Molecule 5 is ADENOSINE-5'-DIPHOSPHATE (CCD ID: ADP) (formula: $\text{C}_{10}\text{H}_{15}\text{N}_5\text{O}_{10}\text{P}_2$) (labeled as "Ligand of Interest" by depositor).



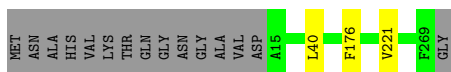
Mol	Chain	Residues	Atoms					AltConf
5	D	1	Total 27	C 10	N 5	O 10	P 2	0
5	E	1	Total 27	C 10	N 5	O 10	P 2	0

3 Residue-property plots [i](#)

These plots are drawn for all protein, RNA, DNA and oligosaccharide chains in the entry. The first graphic for a chain summarises the proportions of the various outlier classes displayed in the second graphic. The second graphic shows the sequence view annotated by issues in geometry and atom inclusion in map density. Residues are color-coded according to the number of geometric quality criteria for which they contain at least one outlier: green = 0, yellow = 1, orange = 2 and red = 3 or more. A red diamond above a residue indicates a poor fit to the EM map for this residue (all-atom inclusion < 40%). Stretches of 2 or more consecutive residues without any outlier are shown as a green connector. Residues present in the sample, but not in the model, are shown in grey.

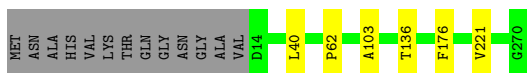
- Molecule 1: Protein NorQ

Chain A:  93% • 6%




- Molecule 1: Protein NorQ

Chain B:  93% • 5%




- Molecule 1: Protein NorQ

Chain C:  91% • 5%




- Molecule 1: Protein NorQ

Chain D:  89% 5% 6%



- Molecule 1: Protein NorQ

Chain E:  91% • 5%



- Molecule 1: Protein NorQ

MET	ASN	ASN	HTS	VAL	LYS	THR	GLN	GLY	ASN	GLY	ALA	VAL	ASP	ALA	PRO	F17	K41	R80	D116	V119	T125	I130	E139	M147	Y152	G155	R170	L194	D195	V221	E244	T248	F269	G17
-----	-----	-----	-----	-----	-----	-----	-----	-----	-----	-----	-----	-----	-----	-----	-----	-----	-----	-----	------	------	------	------	------	------	------	------	------	------	------	------	------	------	------	-----

- Chain G: 42% . 55%

THR	ASP	ALA	ALA	ALA	ASP	MET
GLU	ASP	ALA	GLU	GLU	PRO	LEU
SER	GLN	ALA	VAL	HIS	ALA	GLY
ALA	ASP	PRO	VAL	GLY	SER	LEU
VAL	ASP	GLY	GLU	LEU	GLN	GLU
T466	ALA	ASP	GLU	LEU	ALA	TRP
E476	LYS	PRO	LEU	ALA	ALA	PRO
A477	ALA	ASP	ALA	ALA	HIS	GLU
L478	ALA	GLY	ARG	Gln	HIS	PRO
L507	GLU	Ile	HIS	GLY	ARG	GLU
L536	ASP	ALA	LEU	ASP	Ile	THR
H542	GLU	ASP	GLY	PRO	GLY	GLY
R555	LEU	ALA	LEU	VAL	ARG	Lys
T561	GLN	MET	PRO	VAL	GLY	HIS
P565	VAL	PHE	PRO	LEU	THR	TRP
H592	SER	ARG	LEU	GLY	ALA	SER
V599	Lys	ALA	ALA	ALA	GLU	SER
I610	ALA	ARG	ARG	VAL	ALA	ALA
A638	PRO	ALA	GLN	LEU	PHE	ALA
	LEU	GLN	ASP	MET	GLU	GLN
	ARG	GLN	ASP	LEU	THR	PHE
	LEU	PRO	ASP	GLN	GLY	ASP
	HIS	GLN	ASP	GLN	GLU	ASP
	LEU	ARG	GLN	VAL	Ile	GLN
	LEU	ASP	VAL	ALA	LEU	ALA
	ALA	SER	Lys	PRO	ARG	VAL
	PRO	LEU	ALA	GLY	LEU	ALA
	GLU	Ile	PRO	LEU	PRO	LEU
	ASP	LEU	ARG	ASP	GLU	SER
	ALA	HIS	ASP	GLY	ARG	GLU
	ASP	Lys	TYR	LEU	LEU	VAL
	LEU	PHE	ARG	TYR	SER	SER
	GLU	GLU	PRO	ASP	VAL	GLY
	VAL	ALA	MET	ASP	LEU	ARG
	ALA	LEU	ARG	LEU	PRO	ALA
	SER	SER	VAL	GLU	ARG	VAL
	E347	TRP	PRO	LEU	GLN	LEU
	L380	ALA	LEU	VAL	ALA	PHE
		ASP	TRP	LEU	ASN	ALA
	T431	LEU	PRO	SER	GLY	ALA
	B432	MET	ASP	LEU	ALA	GLY
	Q433	ASN	LEU	ARG	PHE	GLY
		LEU	ALA	PRO	LEU	GLY
	R443	ASN	LEU	VAL	THR	GLY
		ARG	PRO	ALA	TRP	GLY
	V457	HIS	THR	GLU	LEU	VAL
	S456	ASP	GLU	THR	ALA	VAL
	R459	ASP	LEU	THR	ALA	VAL

4 Experimental information

Property	Value	Source
EM reconstruction method	SINGLE PARTICLE	Depositor
Imposed symmetry	POINT, C1	Depositor
Number of particles used	50874	Depositor
Resolution determination method	FSC 0.143 CUT-OFF	Depositor
CTF correction method	PHASE FLIPPING AND AMPLITUDE CORRECTION	Depositor
Microscope	TFS KRIOS	Depositor
Voltage (kV)	300	Depositor
Electron dose ($e^-/\text{\AA}^2$)	45	Depositor
Minimum defocus (nm)	500	Depositor
Maximum defocus (nm)	2500	Depositor
Magnification	105000	Depositor
Image detector	GATAN K3 BIOQUANTUM (6k x 4k)	Depositor
Maximum map value	0.645	Depositor
Minimum map value	-0.230	Depositor
Average map value	0.001	Depositor
Map value standard deviation	0.023	Depositor
Recommended contour level	0.1	Depositor
Map size (Å)	243.64801, 243.64801, 243.64801	wwPDB
Map dimensions	288, 288, 288	wwPDB
Map angles (°)	90.0, 90.0, 90.0	wwPDB
Pixel spacing (Å)	0.846, 0.846, 0.846	Depositor

5 Model quality [i](#)

5.1 Standard geometry [i](#)

Bond lengths and bond angles in the following residue types are not validated in this section: ADP, MG, ATP

The Z score for a bond length (or angle) is the number of standard deviations the observed value is removed from the expected value. A bond length (or angle) with $|Z| > 5$ is considered an outlier worth inspection. RMSZ is the root-mean-square of all Z scores of the bond lengths (or angles).

Mol	Chain	Bond lengths		Bond angles	
		RMSZ	# Z >5	RMSZ	# Z >5
1	A	0.12	0/1930	0.26	0/2624
1	B	0.13	0/1966	0.26	0/2666
1	C	0.14	0/1950	0.28	0/2646
1	D	0.13	0/1961	0.26	0/2661
1	E	0.13	0/1927	0.26	0/2619
1	F	0.12	0/1842	0.28	0/2511
2	G	0.11	0/1998	0.32	0/2727
All	All	0.13	0/13574	0.27	0/18454

There are no bond length outliers.

There are no bond angle outliers.

There are no chirality outliers.

There are no planarity outliers.

5.2 Too-close contacts [i](#)

In the following table, the Non-H and H(model) columns list the number of non-hydrogen atoms and hydrogen atoms in the chain respectively. The H(added) column lists the number of hydrogen atoms added and optimized by MolProbity. The Clashes column lists the number of clashes within the asymmetric unit, whereas Symm-Clashes lists symmetry-related clashes.

Mol	Chain	Non-H	H(model)	H(added)	Clashes	Symm-Clashes
1	A	1897	0	1902	1	0
1	B	1933	0	1941	2	0
1	C	1917	0	1937	5	0
1	D	1929	0	1957	7	0
1	E	1894	0	1892	6	0
1	F	1812	0	1755	8	0

Continued on next page...

Continued from previous page...

Mol	Chain	Non-H	H(model)	H(added)	Clashes	Symm-Clashes
2	G	1964	0	1770	6	0
3	A	31	0	12	0	0
3	B	31	0	12	0	0
3	C	31	0	12	0	0
4	A	1	0	0	0	0
4	B	1	0	0	0	0
4	C	1	0	0	0	0
5	D	27	0	12	0	0
5	E	27	0	12	0	0
All	All	13496	0	13214	30	0

The all-atom clashscore is defined as the number of clashes found per 1000 atoms (including hydrogen atoms). The all-atom clashscore for this structure is 1.

The worst 5 of 30 close contacts within the same asymmetric unit are listed below, sorted by their clash magnitude.

Atom-1	Atom-2	Interatomic distance (Å)	Clash overlap (Å)
2:G:555:ARG:HD2	2:G:592:HIS:CE1	2.31	0.66
1:F:80:ARG:HH21	2:G:433:GLN:HB2	1.66	0.60
1:A:40:LEU:HD22	1:A:176:PHE:HE1	1.71	0.54
1:D:45:GLY:HA3	1:D:222:SER:HB2	1.91	0.53
1:E:16:PRO:HB3	1:E:50:ARG:HH11	1.77	0.50

There are no symmetry-related clashes.

5.3 Torsion angles [i](#)

5.3.1 Protein backbone [i](#)

In the following table, the Percentiles column shows the percent Ramachandran outliers of the chain as a percentile score with respect to all PDB entries followed by that with respect to all EM entries.

The Analysed column shows the number of residues for which the backbone conformation was analysed, and the total number of residues.

Mol	Chain	Analysed	Favoured	Allowed	Outliers	Percentiles	
1	A	253/270 (94%)	247 (98%)	6 (2%)	0	100	100
1	B	255/270 (94%)	249 (98%)	6 (2%)	0	100	100

Continued on next page...

Continued from previous page...

Mol	Chain	Analysed	Favoured	Allowed	Outliers	Percentiles	
1	C	254/270 (94%)	245 (96%)	9 (4%)	0	100	100
1	D	253/270 (94%)	246 (97%)	7 (3%)	0	100	100
1	E	255/270 (94%)	246 (96%)	9 (4%)	0	100	100
1	F	251/270 (93%)	239 (95%)	12 (5%)	0	100	100
2	G	282/638 (44%)	258 (92%)	24 (8%)	0	100	100
All	All	1803/2258 (80%)	1730 (96%)	73 (4%)	0	100	100

There are no Ramachandran outliers to report.

5.3.2 Protein sidechains ⓘ

In the following table, the Percentiles column shows the percent sidechain outliers of the chain as a percentile score with respect to all PDB entries followed by that with respect to all EM entries.

The Analysed column shows the number of residues for which the sidechain conformation was analysed, and the total number of residues.

Mol	Chain	Analysed	Rotameric	Outliers	Percentiles	
1	A	185/213 (87%)	184 (100%)	1 (0%)	81	85
1	B	191/213 (90%)	189 (99%)	2 (1%)	68	80
1	C	188/213 (88%)	186 (99%)	2 (1%)	65	79
1	D	194/213 (91%)	190 (98%)	4 (2%)	47	71
1	E	182/213 (85%)	181 (100%)	1 (0%)	81	85
1	F	165/213 (78%)	163 (99%)	2 (1%)	63	79
2	G	150/495 (30%)	144 (96%)	6 (4%)	28	61
All	All	1255/1773 (71%)	1237 (99%)	18 (1%)	57	77

5 of 18 residues with a non-rotameric sidechain are listed below:

Mol	Chain	Res	Type
2	G	476	GLU
2	G	610	ILE
2	G	599	VAL
1	D	221	VAL
2	G	457	VAL

Sometimes sidechains can be flipped to improve hydrogen bonding and reduce clashes. 5 of 7 such sidechains are listed below:

Mol	Chain	Res	Type
1	D	158	ASN
2	G	371	ASN
2	G	635	GLN
2	G	575	HIS
1	C	34	ASN

5.3.3 RNA [i](#)

There are no RNA molecules in this entry.

5.4 Non-standard residues in protein, DNA, RNA chains [i](#)

There are no non-standard protein/DNA/RNA residues in this entry.

5.5 Carbohydrates [i](#)

There are no oligosaccharides in this entry.

5.6 Ligand geometry [i](#)

Of 8 ligands modelled in this entry, 3 are monoatomic - leaving 5 for Mogul analysis.

In the following table, the Counts columns list the number of bonds (or angles) for which Mogul statistics could be retrieved, the number of bonds (or angles) that are observed in the model and the number of bonds (or angles) that are defined in the Chemical Component Dictionary. The Link column lists molecule types, if any, to which the group is linked. The Z score for a bond length (or angle) is the number of standard deviations the observed value is removed from the expected value. A bond length (or angle) with $|Z| > 2$ is considered an outlier worth inspection. RMSZ is the root-mean-square of all Z scores of the bond lengths (or angles).

Mol	Type	Chain	Res	Link	Bond lengths			Bond angles		
					Counts	RMSZ	$\# Z > 2$	Counts	RMSZ	$\# Z > 2$
3	ATP	A	301	4	32,33,33	0.39	0	48,52,52	0.34	0
5	ADP	E	301	-	28,29,29	1.40	4 (14%)	43,45,45	1.82	8 (18%)
3	ATP	C	301	4	32,33,33	0.42	0	48,52,52	0.34	0
5	ADP	D	301	-	28,29,29	1.39	4 (14%)	43,45,45	1.85	8 (18%)
3	ATP	B	301	4	32,33,33	0.40	0	48,52,52	0.34	0

In the following table, the Chirals column lists the number of chiral outliers, the number of chiral

centers analysed, the number of these observed in the model and the number defined in the Chemical Component Dictionary. Similar counts are reported in the Torsion and Rings columns. '-' means no outliers of that kind were identified.

Mol	Type	Chain	Res	Link	Chirals	Torsions	Rings
3	ATP	A	301	4	-	2/22/38/38	0/3/3/3
5	ADP	E	301	-	-	0/16/32/32	0/3/3/3
3	ATP	C	301	4	-	0/22/38/38	0/3/3/3
5	ADP	D	301	-	-	2/16/32/32	0/3/3/3
3	ATP	B	301	4	-	2/22/38/38	0/3/3/3

The worst 5 of 8 bond length outliers are listed below:

Mol	Chain	Res	Type	Atoms	Z	Observed(Å)	Ideal(Å)
5	E	301	ADP	C5-C4	4.57	1.47	1.39
5	D	301	ADP	C5-C4	4.56	1.47	1.39
5	E	301	ADP	C5-C6	2.57	1.48	1.41
5	D	301	ADP	C5-C6	2.55	1.48	1.41
5	D	301	ADP	C5-N7	-2.47	1.34	1.39

The worst 5 of 16 bond angle outliers are listed below:

Mol	Chain	Res	Type	Atoms	Z	Observed(°)	Ideal(°)
5	E	301	ADP	C5-C4-N3	-5.86	118.64	126.72
5	D	301	ADP	C5-C4-N3	-5.86	118.65	126.72
5	D	301	ADP	N3-C4-N9	4.71	135.18	127.17
5	E	301	ADP	N3-C4-N9	4.66	135.09	127.17
5	D	301	ADP	C2-N3-C4	3.73	120.94	111.83

There are no chirality outliers.

5 of 6 torsion outliers are listed below:

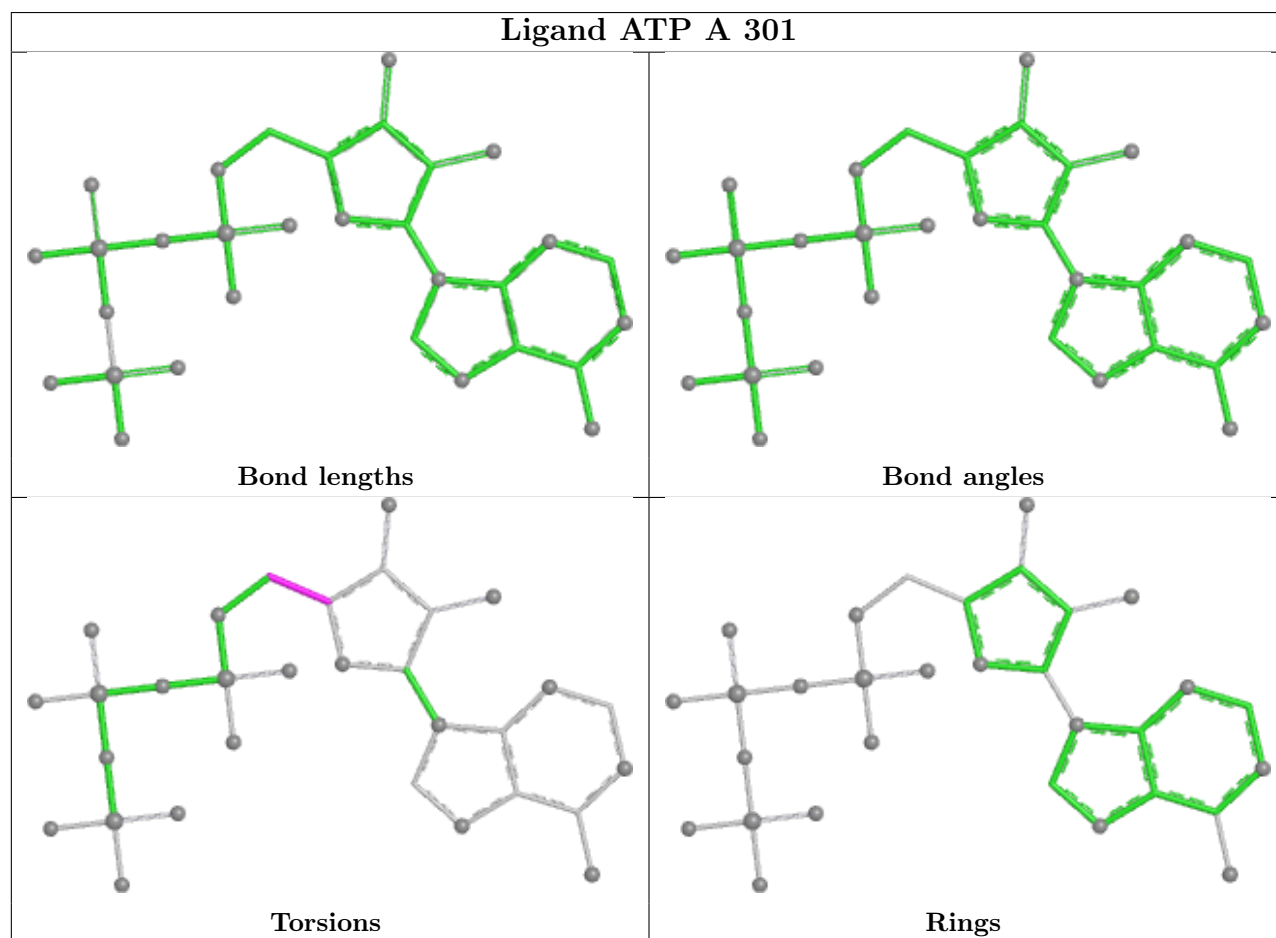
Mol	Chain	Res	Type	Atoms
5	D	301	ADP	C5'-O5'-PA-O1A
3	A	301	ATP	C3'-C4'-C5'-O5'
3	B	301	ATP	O4'-C4'-C5'-O5'
3	A	301	ATP	O4'-C4'-C5'-O5'
3	B	301	ATP	C3'-C4'-C5'-O5'

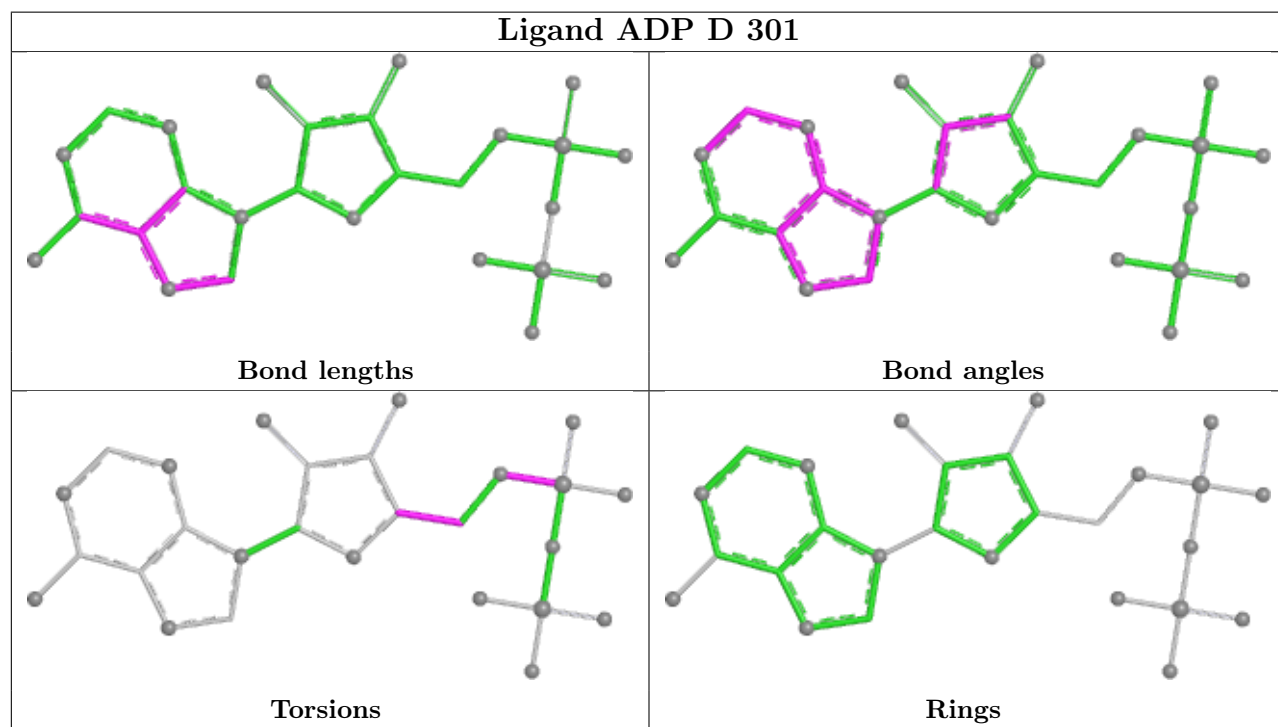
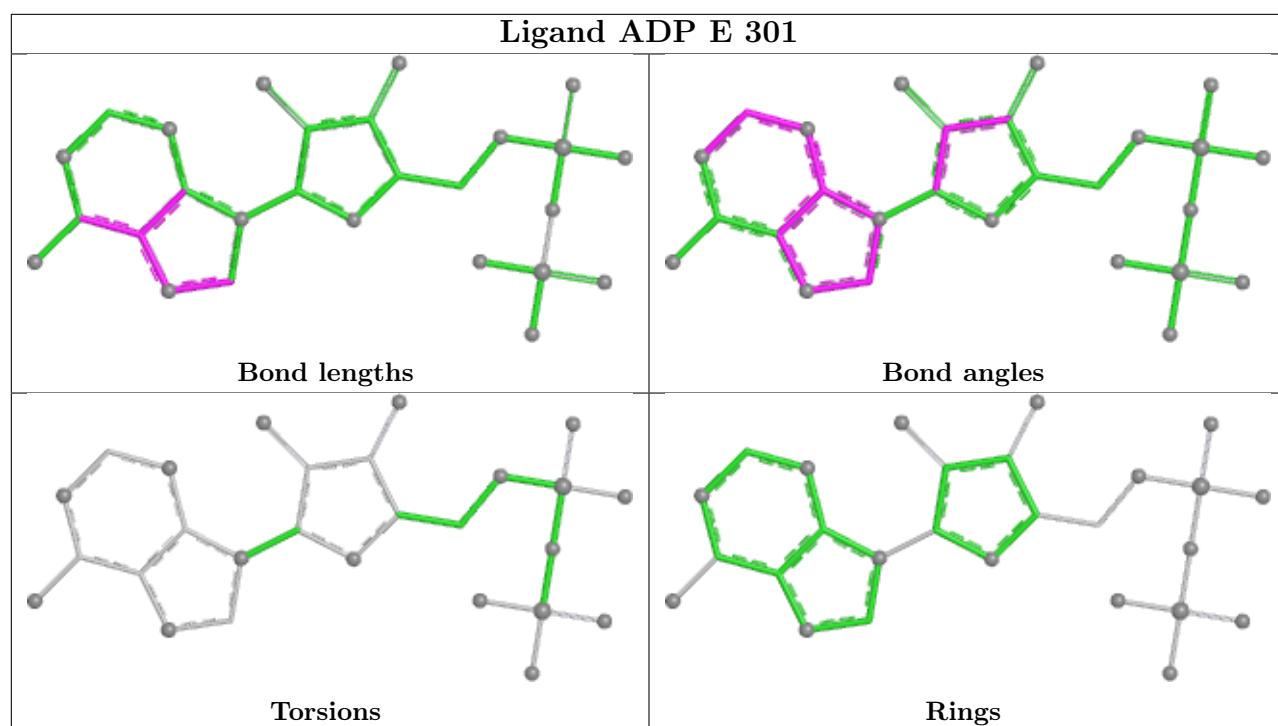
There are no ring outliers.

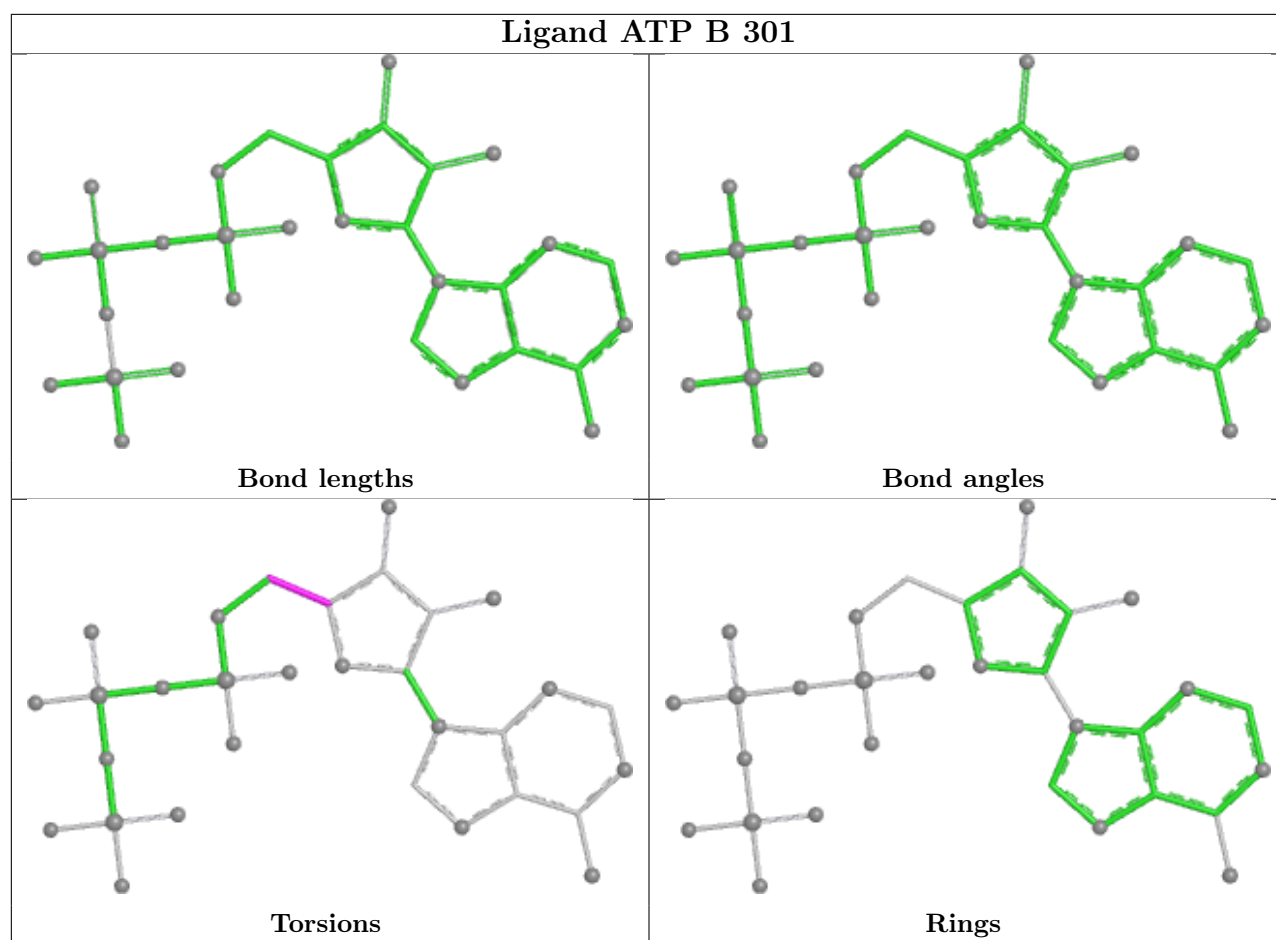
No monomer is involved in short contacts.

The following is a two-dimensional graphical depiction of Mogul quality analysis of bond lengths,

bond angles, torsion angles, and ring geometry for all instances of the Ligand of Interest. In addition, ligands with molecular weight > 250 and outliers as shown on the validation Tables will also be included. For torsion angles, if less than 5% of the Mogul distribution of torsion angles is within 10 degrees of the torsion angle in question, then that torsion angle is considered an outlier. Any bond that is central to one or more torsion angles identified as an outlier by Mogul will be highlighted in the graph. For rings, the root-mean-square deviation (RMSD) between the ring in question and similar rings identified by Mogul is calculated over all ring torsion angles. If the average RMSD is greater than 60 degrees and the minimal RMSD between the ring in question and any Mogul-identified rings is also greater than 60 degrees, then that ring is considered an outlier. The outliers are highlighted in purple. The color gray indicates Mogul did not find sufficient equivalents in the CSD to analyse the geometry.







5.7 Other polymers [i](#)

There are no such residues in this entry.

5.8 Polymer linkage issues [i](#)

There are no chain breaks in this entry.

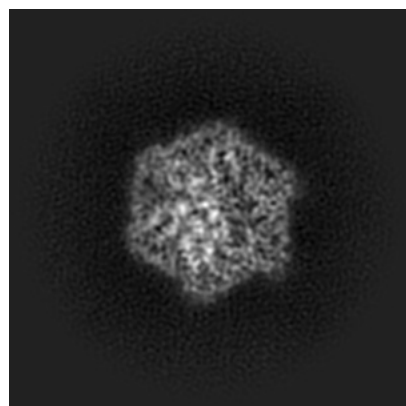
6 Map visualisation [i](#)

This section contains visualisations of the EMDB entry EMD-53156. These allow visual inspection of the internal detail of the map and identification of artifacts.

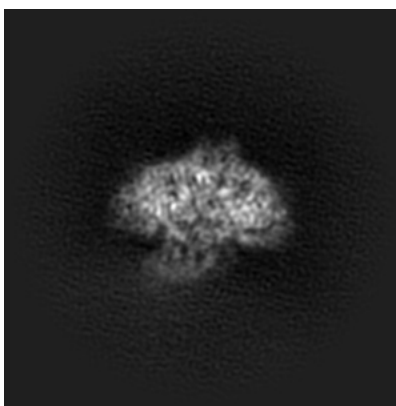
Images derived from a raw map, generated by summing the deposited half-maps, are presented below the corresponding image components of the primary map to allow further visual inspection and comparison with those of the primary map.

6.1 Orthogonal projections [i](#)

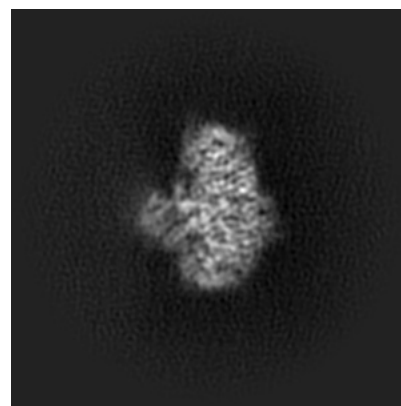
6.1.1 Primary map



X

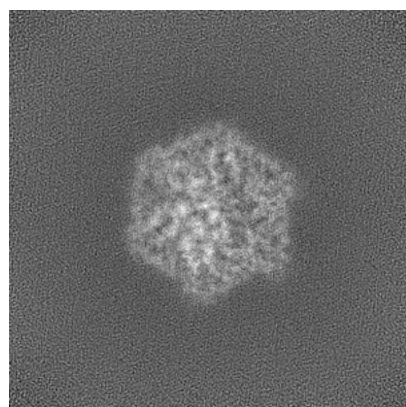


Y

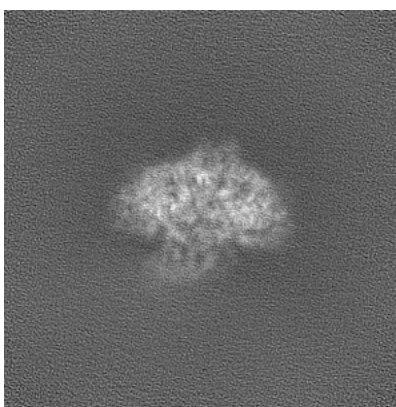


Z

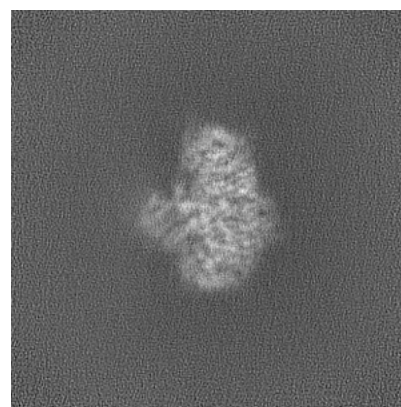
6.1.2 Raw map



X



Y

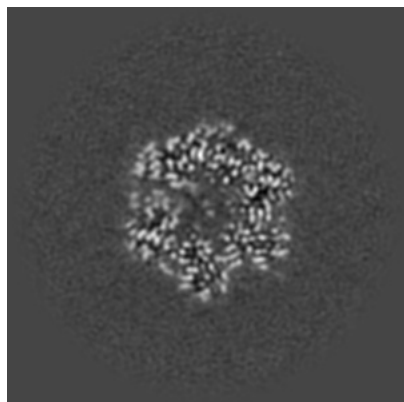


Z

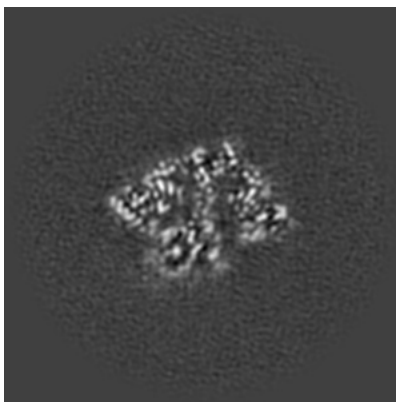
The images above show the map projected in three orthogonal directions.

6.2 Central slices [i](#)

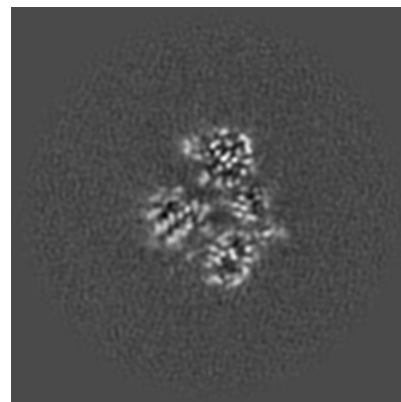
6.2.1 Primary map



X Index: 144

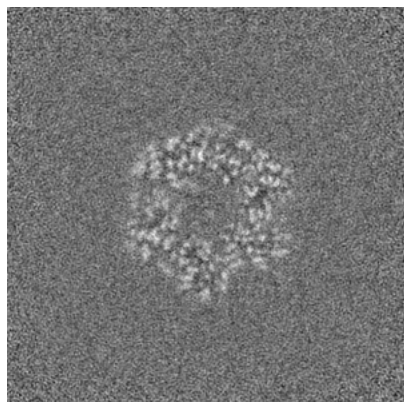


Y Index: 144

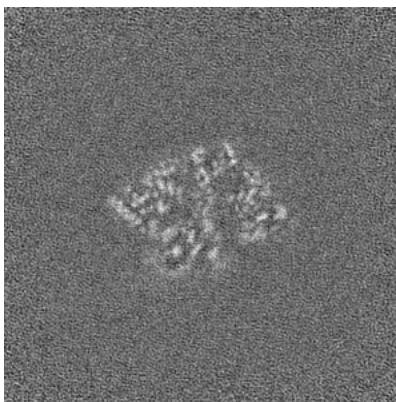


Z Index: 144

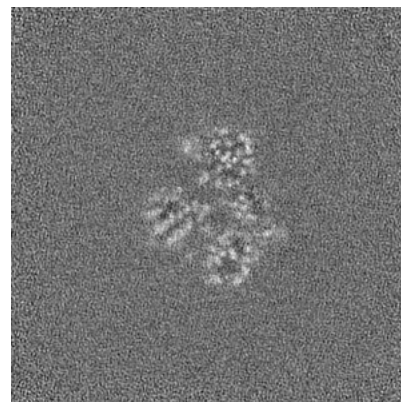
6.2.2 Raw map



X Index: 144



Y Index: 144

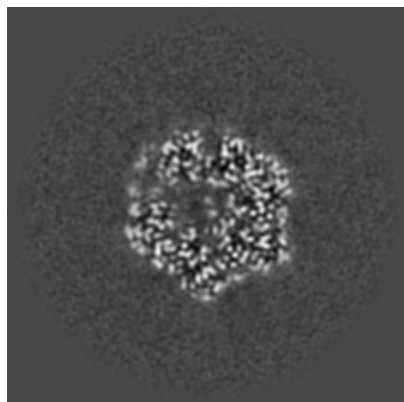


Z Index: 144

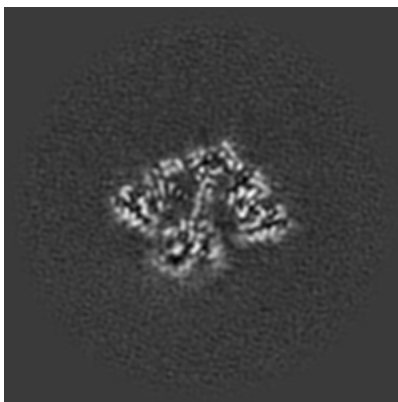
The images above show central slices of the map in three orthogonal directions.

6.3 Largest variance slices [i](#)

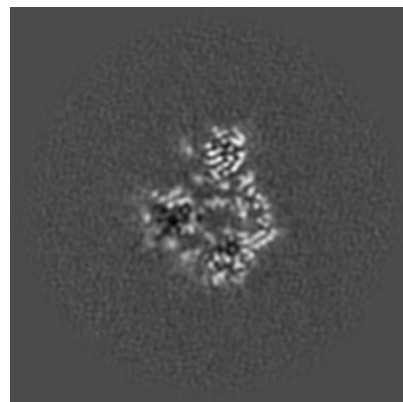
6.3.1 Primary map



X Index: 148

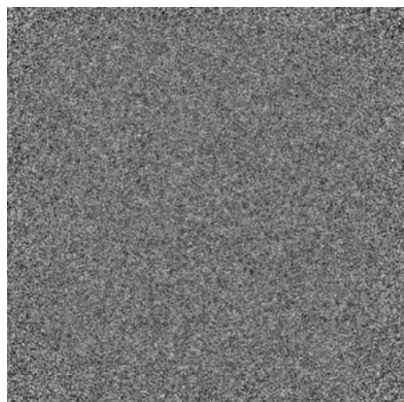


Y Index: 146

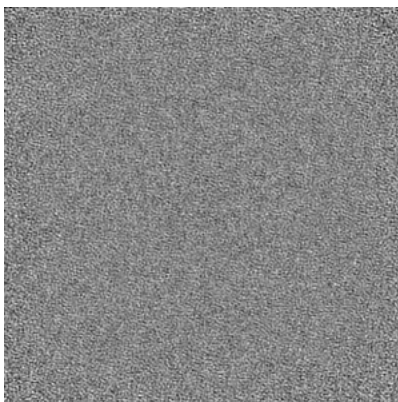


Z Index: 140

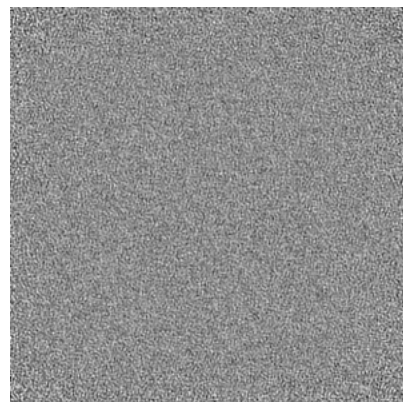
6.3.2 Raw map



X Index: 0



Y Index: 0

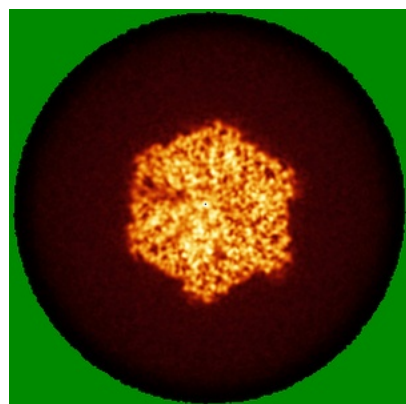


Z Index: 0

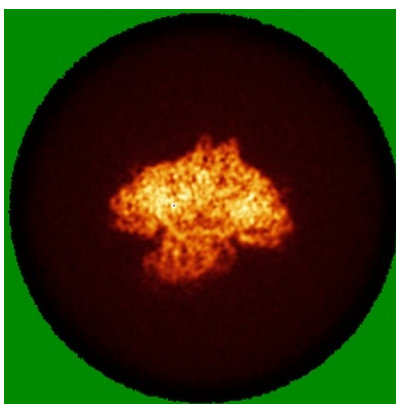
The images above show the largest variance slices of the map in three orthogonal directions.

6.4 Orthogonal standard-deviation projections (False-color) [i](#)

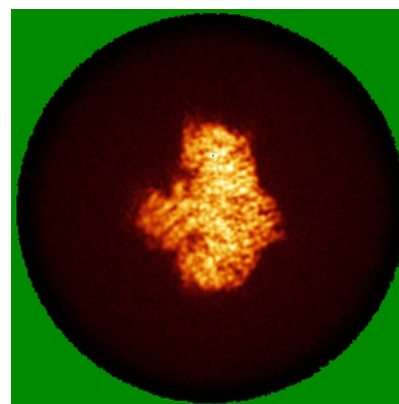
6.4.1 Primary map



X

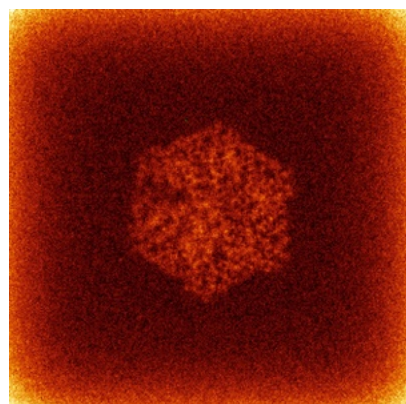


Y

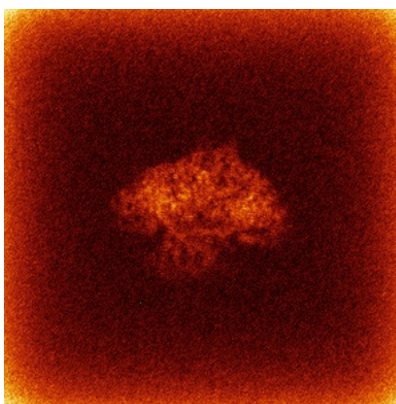


Z

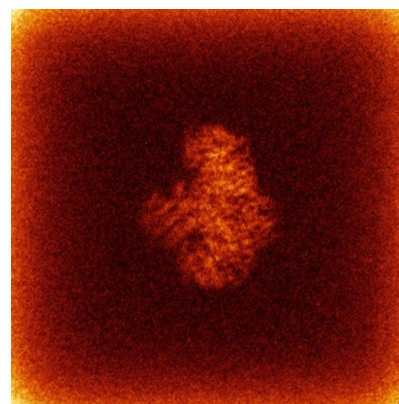
6.4.2 Raw map



X



Y

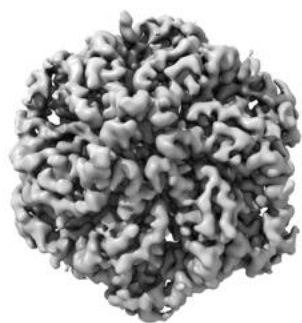


Z

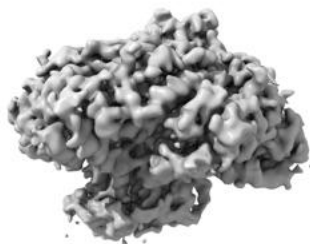
The images above show the map standard deviation projections with false color in three orthogonal directions. Minimum values are shown in green, max in blue, and dark to light orange shades represent small to large values respectively.

6.5 Orthogonal surface views [i](#)

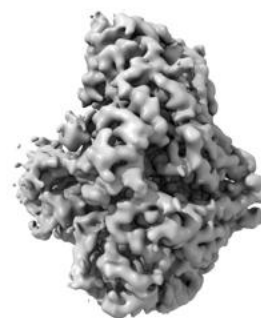
6.5.1 Primary map



X



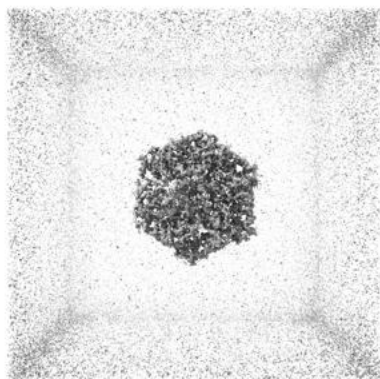
Y



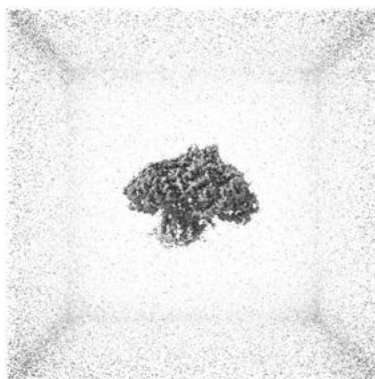
Z

The images above show the 3D surface view of the map at the recommended contour level 0.1. These images, in conjunction with the slice images, may facilitate assessment of whether an appropriate contour level has been provided.

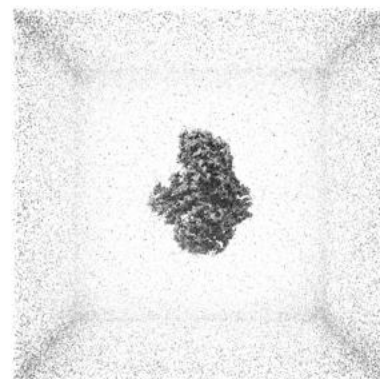
6.5.2 Raw map



X



Y



Z

These images show the 3D surface of the raw map. The raw map's contour level was selected so that its surface encloses the same volume as the primary map does at its recommended contour level.

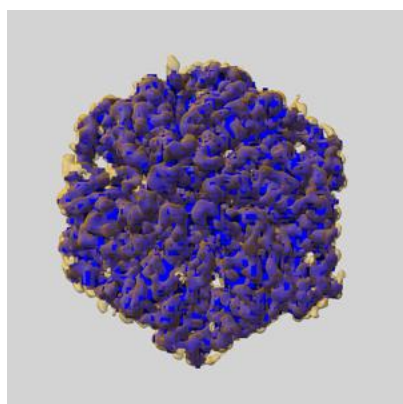
6.6 Mask visualisation [i](#)

This section shows the 3D surface view of the primary map at 50% transparency overlaid with the specified mask at 0% transparency

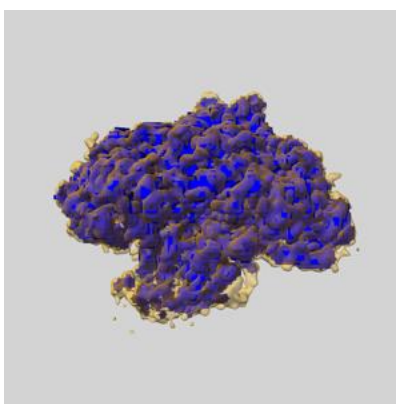
A mask typically either:

- Encompasses the whole structure
- Separates out a domain, a functional unit, a monomer or an area of interest from a larger structure

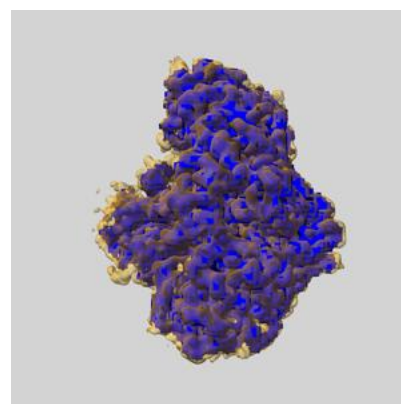
6.6.1 emd_53156_msk_1.map [i](#)



X



Y

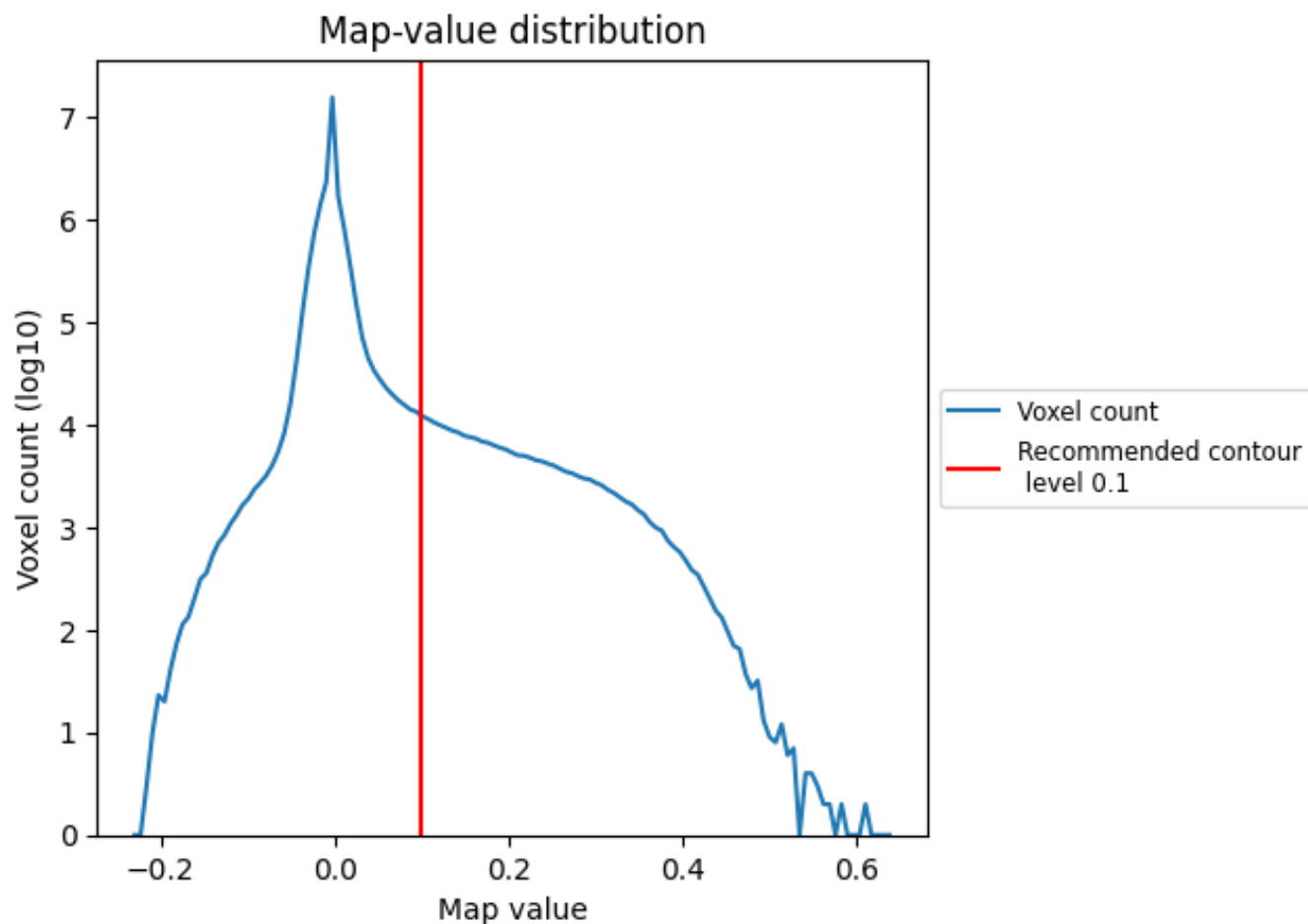


Z

7 Map analysis [i](#)

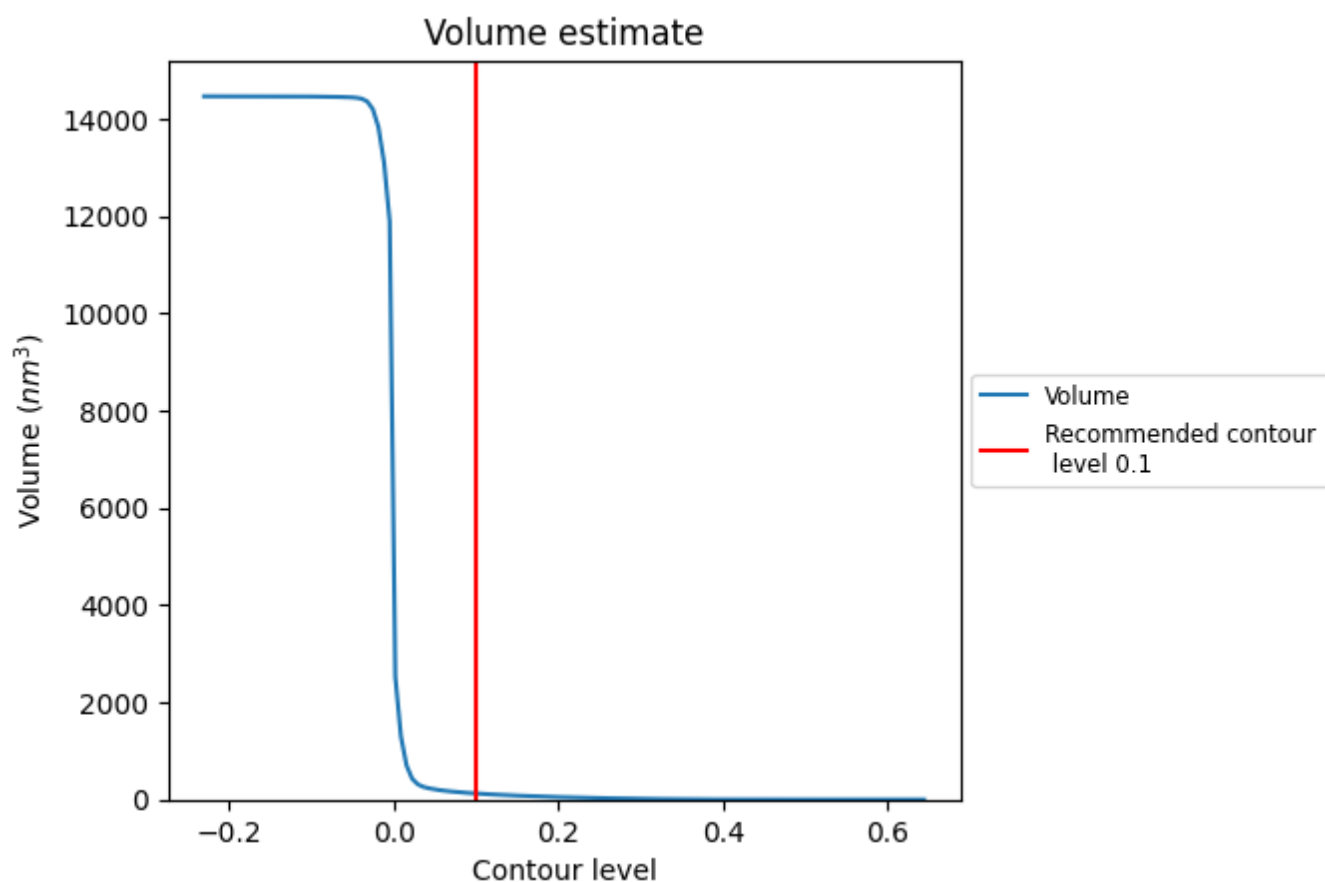
This section contains the results of statistical analysis of the map.

7.1 Map-value distribution [i](#)



The map-value distribution is plotted in 128 intervals along the x-axis. The y-axis is logarithmic. A spike in this graph at zero usually indicates that the volume has been masked.

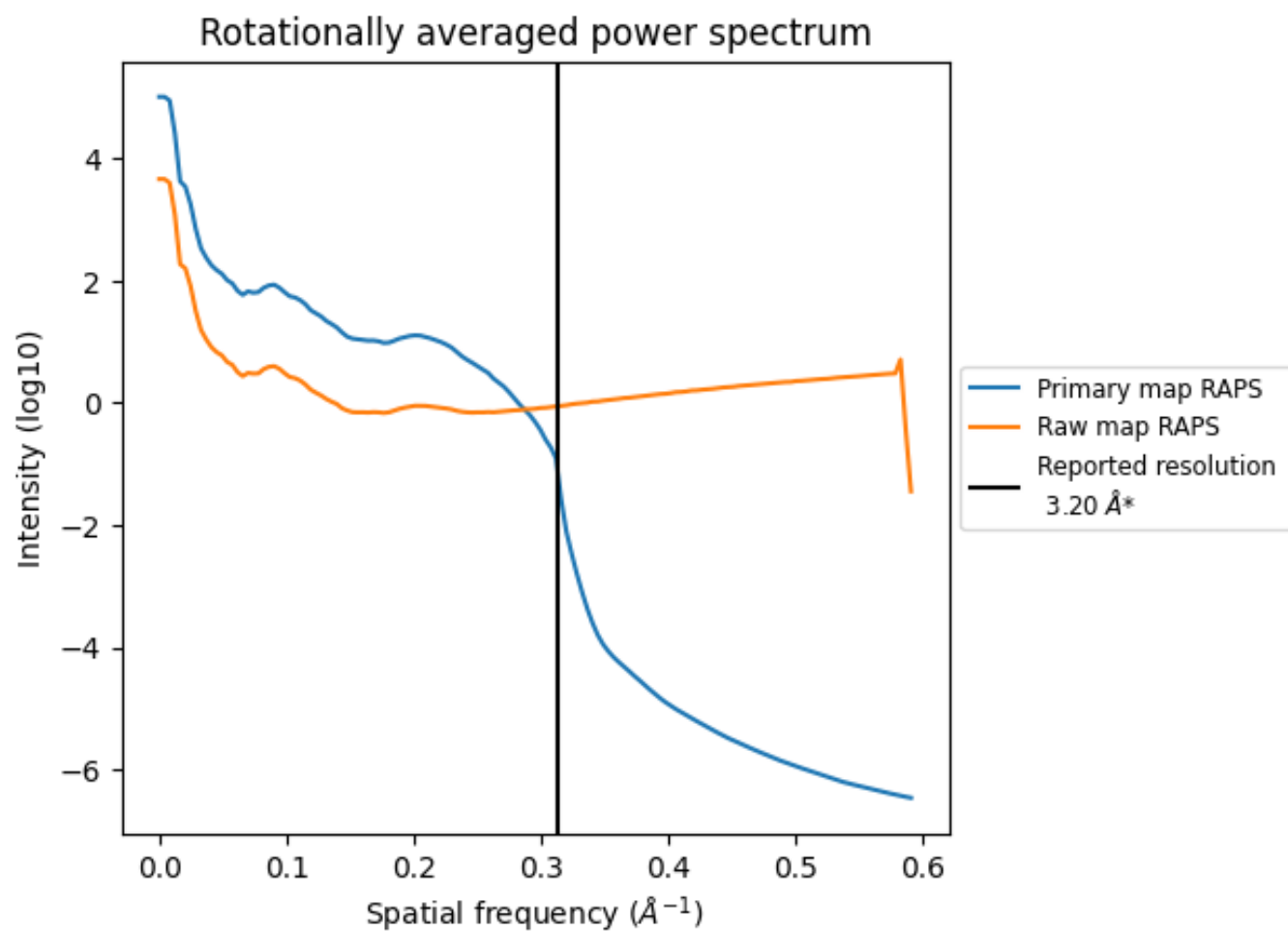
7.2 Volume estimate [i](#)



The volume at the recommended contour level is 125 nm^3 ; this corresponds to an approximate mass of 113 kDa.

The volume estimate graph shows how the enclosed volume varies with the contour level. The recommended contour level is shown as a vertical line and the intersection between the line and the curve gives the volume of the enclosed surface at the given level.

7.3 Rotationally averaged power spectrum ⓘ

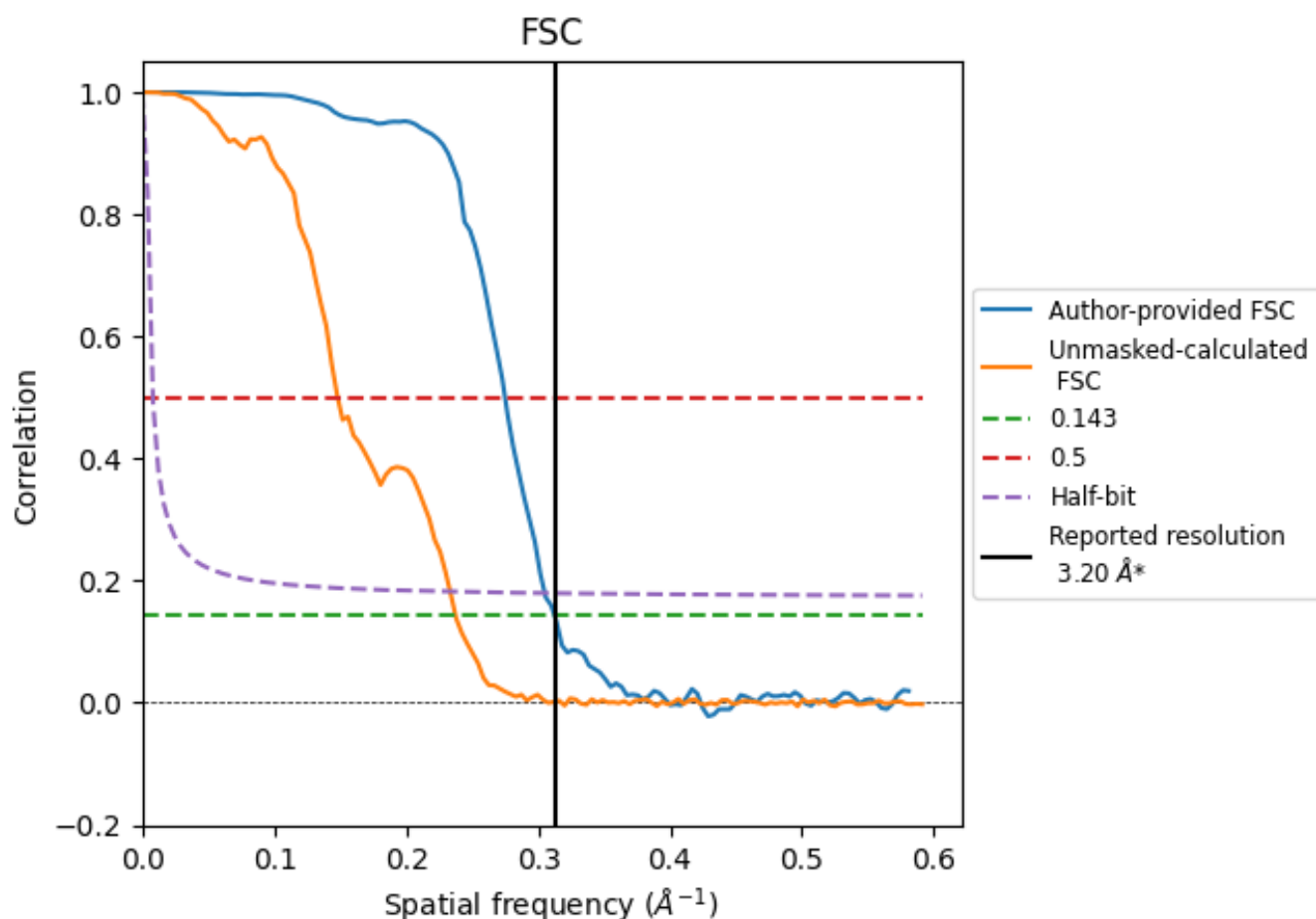


*Reported resolution corresponds to spatial frequency of 0.312 \AA^{-1}

8 Fourier-Shell correlation [i](#)

Fourier-Shell Correlation (FSC) is the most commonly used method to estimate the resolution of single-particle and subtomogram-averaged maps. The shape of the curve depends on the imposed symmetry, mask and whether or not the two 3D reconstructions used were processed from a common reference. The reported resolution is shown as a black line. A curve is displayed for the half-bit criterion in addition to lines showing the 0.143 gold standard cut-off and 0.5 cut-off.

8.1 FSC [i](#)



*Reported resolution corresponds to spatial frequency of 0.312 \AA^{-1}

8.2 Resolution estimates [i](#)

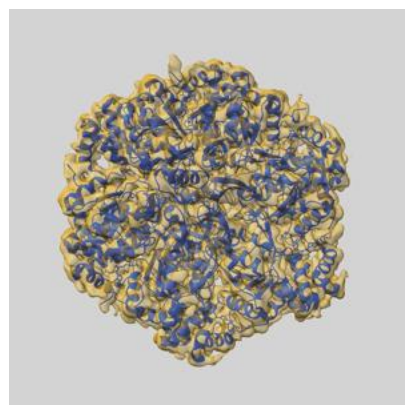
Resolution estimate (Å)	Estimation criterion (FSC cut-off)		
	0.143	0.5	Half-bit
Reported by author	3.20	-	-
Author-provided FSC curve	3.20	3.64	3.28
Unmasked-calculated*	4.21	6.75	4.28

*Resolution estimate based on FSC curve calculated by comparison of deposited half-maps. The value from deposited half-maps intersecting FSC 0.143 CUT-OFF 4.21 differs from the reported value 3.2 by more than 10 %

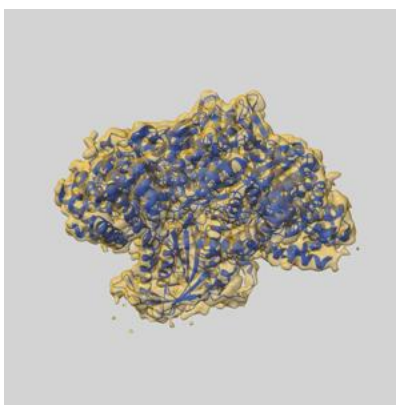
9 Map-model fit [i](#)

This section contains information regarding the fit between EMDB map EMD-53156 and PDB model 9QH6. Per-residue inclusion information can be found in [section 3](#) on [page 7](#).

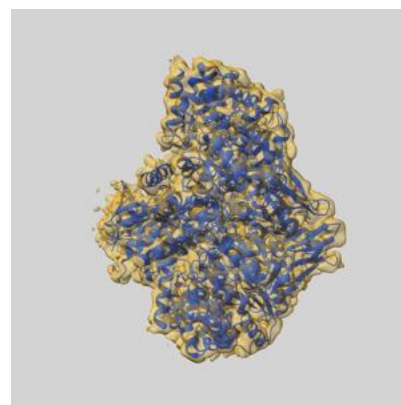
9.1 Map-model overlay [i](#)



X



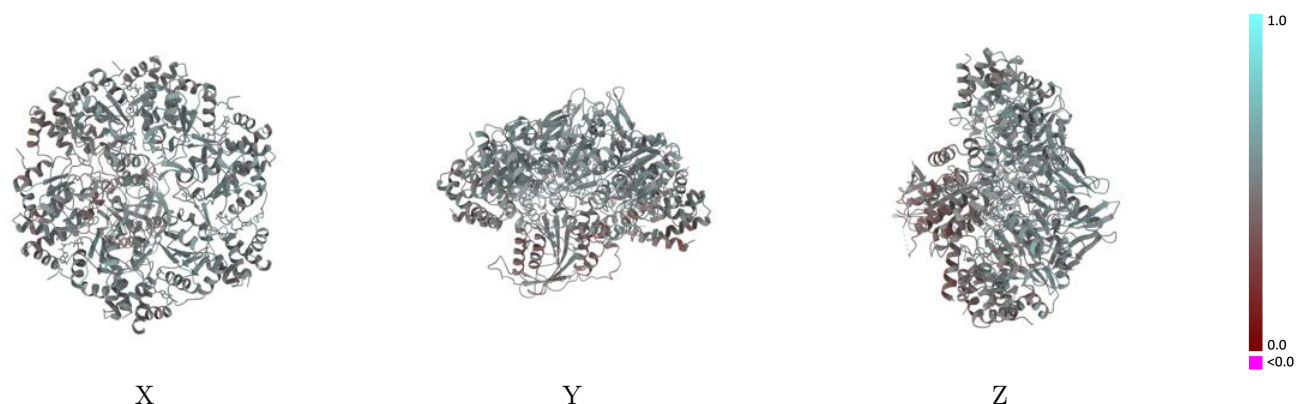
Y



Z

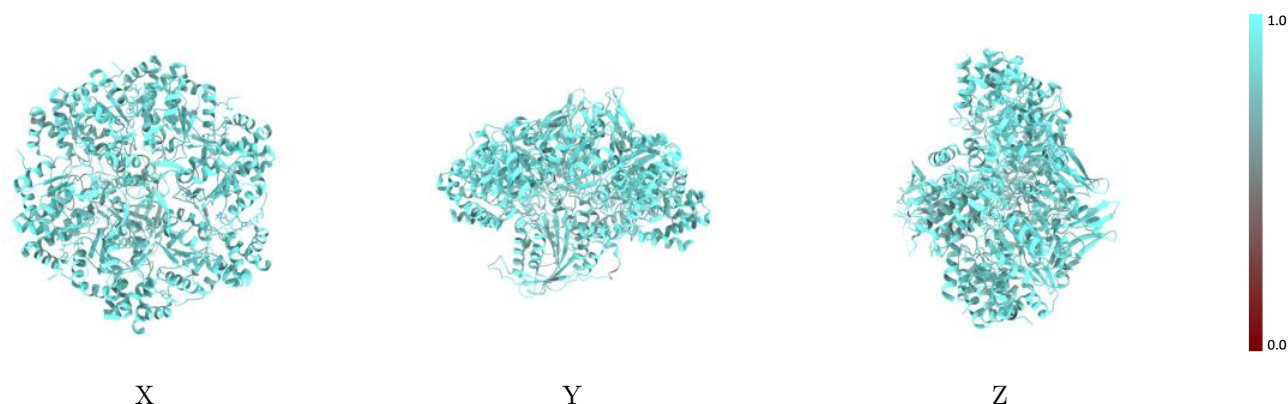
The images above show the 3D surface view of the map at the recommended contour level 0.1 at 50% transparency in yellow overlaid with a ribbon representation of the model coloured in blue. These images allow for the visual assessment of the quality of fit between the atomic model and the map.

9.2 Q-score mapped to coordinate model [i](#)



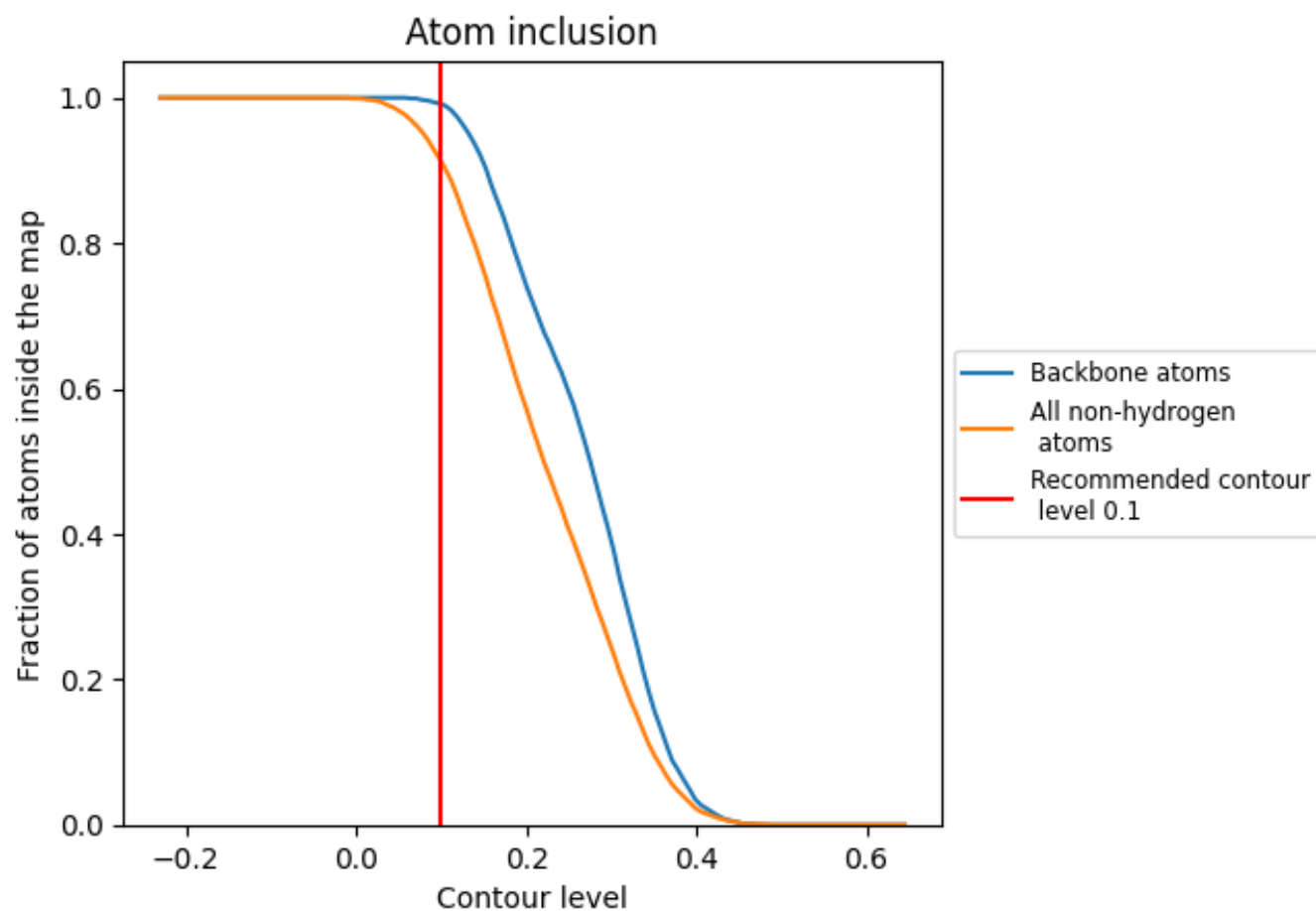
The images above show the model with each residue coloured according to its Q-score. This shows their resolvability in the map with higher Q-score values reflecting better resolvability. Please note: Q-score is calculating the resolvability of atoms, and thus high values are only expected at resolutions at which atoms can be resolved. Low Q-score values may therefore be expected for many entries.

9.3 Atom inclusion mapped to coordinate model [i](#)



The images above show the model with each residue coloured according to its atom inclusion. This shows to what extent they are inside the map at the recommended contour level (0.1).

9.4 Atom inclusion ⓘ



At the recommended contour level, 99% of all backbone atoms, 91% of all non-hydrogen atoms, are inside the map.

9.5 Map-model fit summary ⓘ

The table lists the average atom inclusion at the recommended contour level (0.1) and Q-score for the entire model and for each chain.

Chain	Atom inclusion	Q-score
All	<div><div></div></div> 0.9120	<div><div></div></div> 0.5010
A	<div><div></div></div> 0.9090	<div><div></div></div> 0.5030
B	<div><div></div></div> 0.9280	<div><div></div></div> 0.5190
C	<div><div></div></div> 0.9380	<div><div></div></div> 0.5200
D	<div><div></div></div> 0.9180	<div><div></div></div> 0.5180
E	<div><div></div></div> 0.9230	<div><div></div></div> 0.5130
F	<div><div></div></div> 0.8930	<div><div></div></div> 0.4780
G	<div><div></div></div> 0.8770	<div><div></div></div> 0.4580

1.0

0.0

<0.0