



wwPDB EM Validation Summary Report ⓘ

Apr 16, 2026 – 12:27 PM EDT

PDB ID : 9PE3 / pdb_00009pe3
EMDB ID : EMD-71552
Title : Structure of beta-1,3-glucan synthase from *Saccharomyces cerevisiae* (ScFks1) at the catalytically relevant ground state
Authors : Ren, Z.; Lee, S.Y.
Deposited on : 2025-07-01
Resolution : 3.26 Å(reported)

This is a wwPDB EM Validation Summary Report for a publicly released PDB entry.

We welcome your comments at validation@mail.wwpdb.org

A user guide is available at

<https://www.wwpdb.org/validation/2017/EMValidationReportHelp>
with specific help available everywhere you see the ⓘ symbol.

The types of validation reports are described at

<http://www.wwpdb.org/validation/2017/FAQs#types>.

The following versions of software and data (see [references ⓘ](#)) were used in the production of this report:

EMDB validation analysis : 0.0.1.dev132
Mogul : 2022.3.0, CSD as543be (2022)
MolProbity : 4-5-2 with Phenix2.0
Buster-report : wwPDB partial adaption of 1.1.7 (2018)
Percentile statistics : 20250101.v01 (using entries in the PDB archive January 1st 2025)
EM percentile statistics : 202505.v01 (Using data in the EMDB archive up until May 2025)
MapQ : 1.9.13
Ideal geometry (proteins) : Engh & Huber (2001)
Ideal geometry (DNA, RNA) : Parkinson et al. (1996)
Validation Pipeline (wwPDB-VP) : 2.49

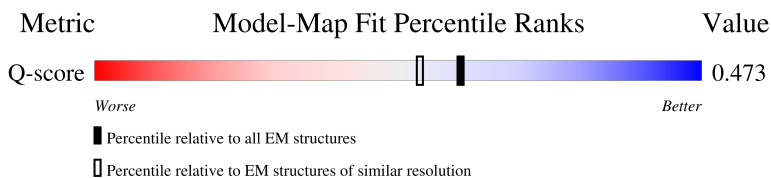
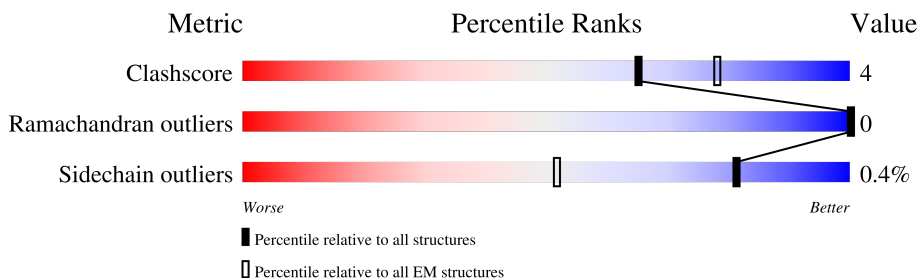
1 Overall quality at a glance

The following experimental techniques were used to determine the structure:

ELECTRON MICROSCOPY

The reported resolution of this entry is 3.26 Å.

Percentile scores (ranging between 0-100) for global validation metrics of the entry are shown in the following graphic. The table shows the number of entries on which the scores are based.



Metric	Whole archive (#Entries)	EM structures (#Entries)	Similar EM resolution (#Entries, resolution range(Å))
Clashscore	229148	23984	-
Ramachandran outliers	224038	23583	-
Sidechain outliers	223484	23102	-
Q-score	-	25397	14557 (2.76 - 3.76)

The table below summarises the geometric issues observed across the polymeric chains and their fit to the map. The red, orange, yellow and green segments of the bar indicate the fraction of residues that contain outliers for ≥ 3 , 2, 1 and 0 types of geometric quality criteria respectively. A grey segment represents the fraction of residues that are not modelled. The numeric value for each fraction is indicated below the corresponding segment, with a dot representing fractions $\leq 5\%$. The upper red bar (where present) indicates the fraction of residues that have poor fit to the EM map (all-atom inclusion $< 40\%$). The numeric value is given above the bar.

Mol	Chain	Length	Quality of chain
1	A	1931	
2	G	197	
3	B	5	

2 Entry composition

There are 8 unique types of molecules in this entry. The entry contains 27719 atoms, of which 13801 are hydrogens and 0 are deuteriums.

In the tables below, the AltConf column contains the number of residues with at least one atom in alternate conformation and the Trace column contains the number of residues modelled with at most 2 atoms.

- Molecule 1 is a protein called 1,3-beta-glucan synthase component FKS1.

Mol	Chain	Residues	Atoms						AltConf	Trace
1	A	1595	Total	C	H	N	O	S	0	0
			24710	8173	12177	2108	2182	70		

There are 55 discrepancies between the modelled and reference sequences:

Chain	Residue	Modelled	Actual	Comment	Reference
A	1877	LEU	-	expression tag	UNP P38631
A	1878	GLU	-	expression tag	UNP P38631
A	1879	VAL	-	expression tag	UNP P38631
A	1880	LEU	-	expression tag	UNP P38631
A	1881	PHE	-	expression tag	UNP P38631
A	1882	GLN	-	expression tag	UNP P38631
A	1883	GLY	-	expression tag	UNP P38631
A	1884	PRO	-	expression tag	UNP P38631
A	1885	ALA	-	expression tag	UNP P38631
A	1886	ALA	-	expression tag	UNP P38631
A	1887	ALA	-	expression tag	UNP P38631
A	1888	GLY	-	expression tag	UNP P38631
A	1889	SER	-	expression tag	UNP P38631
A	1890	ALA	-	expression tag	UNP P38631
A	1891	GLY	-	expression tag	UNP P38631
A	1892	SER	-	expression tag	UNP P38631
A	1893	ALA	-	expression tag	UNP P38631
A	1894	ALA	-	expression tag	UNP P38631
A	1895	GLY	-	expression tag	UNP P38631
A	1896	SER	-	expression tag	UNP P38631
A	1897	GLY	-	expression tag	UNP P38631
A	1898	GLU	-	expression tag	UNP P38631
A	1899	PHE	-	expression tag	UNP P38631
A	1900	ASP	-	expression tag	UNP P38631
A	1901	TYR	-	expression tag	UNP P38631
A	1902	LYS	-	expression tag	UNP P38631
A	1903	ASP	-	expression tag	UNP P38631
A	1904	HIS	-	expression tag	UNP P38631

Continued on next page...

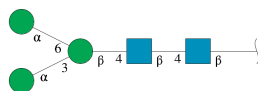
Continued from previous page...

Chain	Residue	Modelled	Actual	Comment	Reference
A	1905	ASP	-	expression tag	UNP P38631
A	1906	GLY	-	expression tag	UNP P38631
A	1907	ASP	-	expression tag	UNP P38631
A	1908	TYR	-	expression tag	UNP P38631
A	1909	LYS	-	expression tag	UNP P38631
A	1910	ASP	-	expression tag	UNP P38631
A	1911	HIS	-	expression tag	UNP P38631
A	1912	ASP	-	expression tag	UNP P38631
A	1913	ILE	-	expression tag	UNP P38631
A	1914	ASP	-	expression tag	UNP P38631
A	1915	TYR	-	expression tag	UNP P38631
A	1916	LYS	-	expression tag	UNP P38631
A	1917	ASP	-	expression tag	UNP P38631
A	1918	ASP	-	expression tag	UNP P38631
A	1919	ASP	-	expression tag	UNP P38631
A	1920	ASP	-	expression tag	UNP P38631
A	1921	LYS	-	expression tag	UNP P38631
A	1922	HIS	-	expression tag	UNP P38631
A	1923	HIS	-	expression tag	UNP P38631
A	1924	HIS	-	expression tag	UNP P38631
A	1925	HIS	-	expression tag	UNP P38631
A	1926	HIS	-	expression tag	UNP P38631
A	1927	HIS	-	expression tag	UNP P38631
A	1928	HIS	-	expression tag	UNP P38631
A	1929	HIS	-	expression tag	UNP P38631
A	1930	HIS	-	expression tag	UNP P38631
A	1931	HIS	-	expression tag	UNP P38631

- Molecule 2 is a protein called YMR295C from *Saccharomyces cerevisiae*.

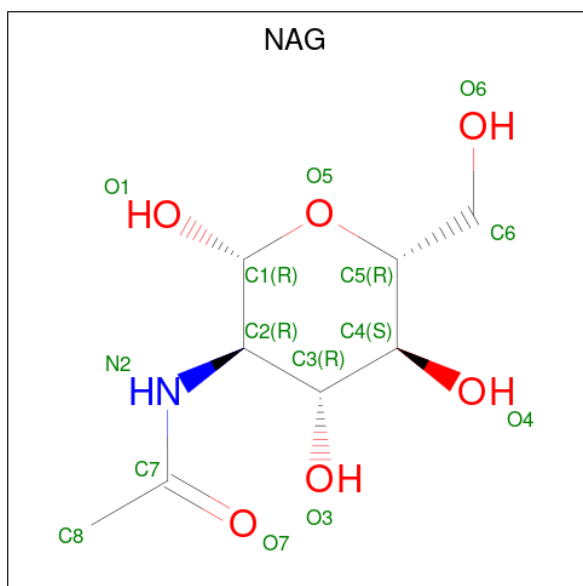
Mol	Chain	Residues	Atoms					AltConf	Trace
2	G	64	Total	C	H	N	O	0	0
			857	298	394	83	82		

- Molecule 3 is an oligosaccharide called alpha-D-mannopyranose-(1-3)-[alpha-D-mannopyranose-(1-6)]beta-D-mannopyranose-(1-4)-2-acetamido-2-deoxy-beta-D-glucopyranose-(1-4)-2-acetamido-2-deoxy-beta-D-glucopyranose.



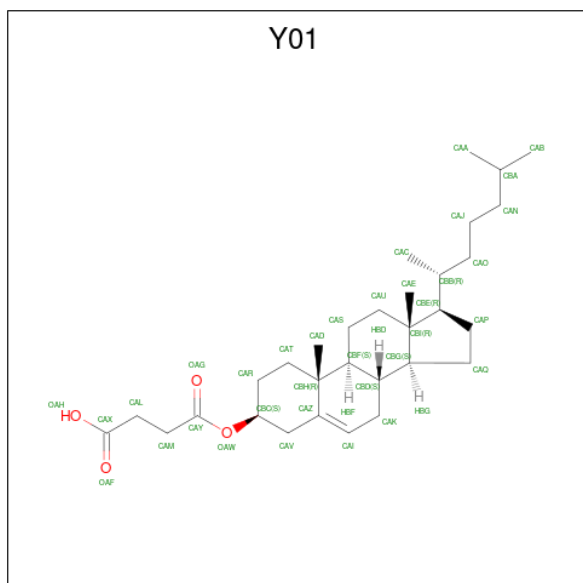
Mol	Chain	Residues	Atoms					AltConf	Trace
3	B	5	Total	C	H	N	O	0	0
			113	34	52	2	25		

- Molecule 4 is 2-acetamido-2-deoxy-beta-D-glucopyranose (CCD ID: NAG) (formula: $C_8H_{15}NO_6$).



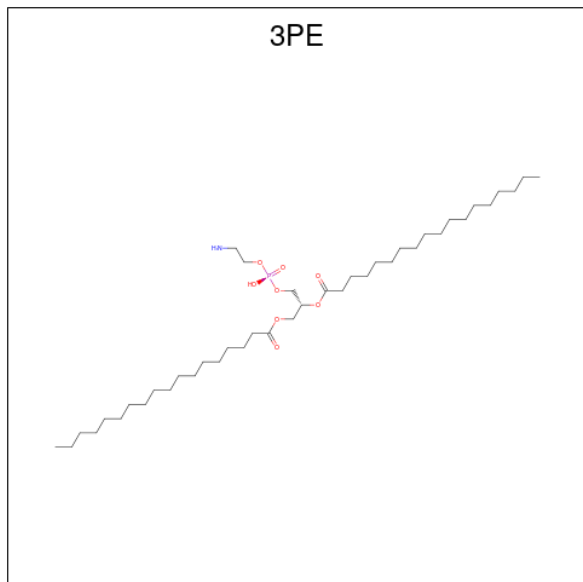
Mol	Chain	Residues	Atoms					AltConf
4	A	1	Total	C	H	N	O	0
			27	8	13	1	5	

- Molecule 5 is CHOLESTEROL HEMISUCCINATE (CCD ID: Y01) (formula: $C_{31}H_{50}O_4$).



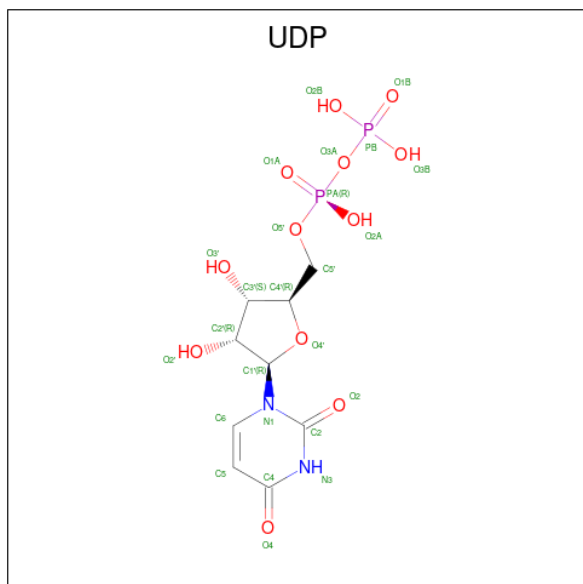


- Molecule 6 is 1,2-Distearoyl-sn-glycerophosphoethanolamine (CCD ID: 3PE) (formula: $C_{41}H_{82}NO_8P$).



Mol	Chain	Residues	Atoms					AltConf	
6	A	1	Total	C	H	N	O	P	0
			125	39	76	1	8	1	

- Molecule 7 is URIDINE-5'-DIPHOSPHATE (CCD ID: UDP) (formula: $C_9H_{14}N_2O_{12}P_2$) (labeled as "Ligand of Interest" by depositor).



Mol	Chain	Residues	Atoms						AltConf
7	A	1	Total	C	H	N	O	P	0
			36	9	11	2	12	2	

- Molecule 8 is water.

Mol	Chain	Residues	Atoms		AltConf
8	A	3	Total	O	0
			3	3	

TYR
LYS
ASP
HIS
ASP
GLY
ASP
TYR
LYS
ASP
HIS
ASP
TLE
ASP
TYR
LYS
ASP
ASP
ASP
ASP
LYS
HIS
HIS
HIS
HIS
HIS
HIS
HIS

● Molecule 2: YMR295C from *Saccharomyces cerevisiae*

Chain G:

29%

68%

MET
MET
HIS
PHE
ARG
LYS
LYS
SER
SER
TLE
TLE
ASN
THR
SER
SER
ASP
HIS
ASP
GLY
ALA
ASN
ARG
ALA
SER
ASP
VAL
LYS
ILE
SER
GLU
ASP
LYS
LYS
ALA
ARG
LEU
MET
ARG
THR
ALA
SER
VAL
ASP
ASP
PRO
ILE
LEU
ASP
ALA
VAL
GLN
GLU
ALA
GLN
PRO
PHE
GLU
GLN
ALA

ASP
THR
PHE
HIS
ASP
ASN
MET
ASN
ARG
SER
GLN
SER
TYR
PHE
SER
ASN
GLU
GLU
GLY
HIS
V80
I81
Q87
P88
I89
T90
D93
I94
Y114
G118
I126
E127
R136
P137
D138
G143
ALA
ALA
VAL
THR
TYR
ASP
ASN
GLY
MET
PRO
GLN
VAL
GLY
GLY
ALA
SER

SER
GLN
MET
TYR
GLY
GLU
ALA
VAL
TYR
GLN
PRO
GLN
GLN
HIS
VAL
THR
GLU
GLU
LYS
LYS
GLN
LYS
PHE
LEU
GLY
ARG
MET
LYS
LYS

● Molecule 3: alpha-D-mannopyranose-(1-3)-[alpha-D-mannopyranose-(1-6)]beta-D-mannopyrano
se-(1-4)-2-acetamido-2-deoxy-beta-D-glucopyranose-(1-4)-2-acetamido-2-deoxy-beta-D-glucopyra
nose

Chain B:

40%

60%

MAN1
MAN2
MAN3
MAN4
MAN5

4 Experimental information

Property	Value	Source
EM reconstruction method	SINGLE PARTICLE	Depositor
Imposed symmetry	POINT, Not provided	
Number of particles used	65064	Depositor
Resolution determination method	FSC 0.143 CUT-OFF	Depositor
CTF correction method	PHASE FLIPPING AND AMPLITUDE CORRECTION	Depositor
Microscope	TFS KRIOS	Depositor
Voltage (kV)	300	Depositor
Electron dose ($e^-/\text{\AA}^2$)	60	Depositor
Minimum defocus (nm)	800	Depositor
Maximum defocus (nm)	2200	Depositor
Magnification	Not provided	
Image detector	GATAN K3 BIOQUANTUM (6k x 4k)	Depositor
Maximum map value	0.584	Depositor
Minimum map value	-0.348	Depositor
Average map value	0.003	Depositor
Map value standard deviation	0.019	Depositor
Recommended contour level	0.073	Depositor
Map size (Å)	268.8, 268.8, 268.8	wwPDB
Map dimensions	320, 320, 320	wwPDB
Map angles (°)	90.0, 90.0, 90.0	wwPDB
Pixel spacing (Å)	0.84, 0.84, 0.84	Depositor

5 Model quality

5.1 Standard geometry

Bond lengths and bond angles in the following residue types are not validated in this section: BMA, 3PE, Y01, NAG, MAN, UDP

The Z score for a bond length (or angle) is the number of standard deviations the observed value is removed from the expected value. A bond length (or angle) with $|Z| > 5$ is considered an outlier worth inspection. RMSZ is the root-mean-square of all Z scores of the bond lengths (or angles).

Mol	Chain	Bond lengths		Bond angles	
		RMSZ	$\# Z > 5$	RMSZ	$\# Z > 5$
1	A	0.11	0/12864	0.25	0/17498
2	G	0.09	0/478	0.23	0/657
All	All	0.11	0/13342	0.25	0/18155

There are no bond length outliers.

There are no bond angle outliers.

There are no chirality outliers.

There are no planarity outliers.

5.2 Too-close contacts

In the following table, the Non-H and H(model) columns list the number of non-hydrogen atoms and hydrogen atoms in the chain respectively. The H(added) column lists the number of hydrogen atoms added and optimized by MolProbity. The Clashes column lists the number of clashes within the asymmetric unit, whereas Symm-Clashes lists symmetry-related clashes.

Mol	Chain	Non-H	H(model)	H(added)	Clashes	Symm-Clashes
1	A	12533	12177	12170	83	0
2	G	463	394	394	3	0
3	B	61	52	52	0	0
4	A	14	13	13	0	0
5	A	770	1078	1078	35	0
6	A	49	76	75	1	0
7	A	25	11	10	1	0
8	A	3	0	0	0	0
All	All	13918	13801	13792	112	0

The all-atom clashscore is defined as the number of clashes found per 1000 atoms (including hydrogen atoms). The all-atom clashscore for this structure is 4.

The worst 5 of 112 close contacts within the same asymmetric unit are listed below, sorted by their clash magnitude.

Atom-1	Atom-2	Interatomic distance (Å)	Clash overlap (Å)
1:A:1171:GLY:O	1:A:1175:THR:N	2.27	0.68
5:A:2014:Y01:HAC1	5:A:2014:Y01:HAE2	1.82	0.60
5:A:2010:Y01:HAE2	5:A:2010:Y01:HAC1	1.84	0.60
1:A:315:ALA:O	1:A:319:ARG:NH1	2.36	0.59
1:A:420:GLU:N	1:A:420:GLU:OE1	2.36	0.59

There are no symmetry-related clashes.

5.3 Torsion angles [i](#)

5.3.1 Protein backbone [i](#)

In the following table, the Percentiles column shows the percent Ramachandran outliers of the chain as a percentile score with respect to all PDB entries followed by that with respect to all EM entries.

The Analysed column shows the number of residues for which the backbone conformation was analysed, and the total number of residues.

Mol	Chain	Analysed	Favoured	Allowed	Outliers	Percentiles	
1	A	1577/1931 (82%)	1555 (99%)	22 (1%)	0	100	100
2	G	62/197 (32%)	61 (98%)	1 (2%)	0	100	100
All	All	1639/2128 (77%)	1616 (99%)	23 (1%)	0	100	100

There are no Ramachandran outliers to report.

5.3.2 Protein sidechains [i](#)

In the following table, the Percentiles column shows the percent sidechain outliers of the chain as a percentile score with respect to all PDB entries followed by that with respect to all EM entries.

The Analysed column shows the number of residues for which the sidechain conformation was analysed, and the total number of residues.

Mol	Chain	Analysed	Rotameric	Outliers	Percentiles	
1	A	1279/1663 (77%)	1274 (100%)	5 (0%)	84	84

Continued on next page...

Continued from previous page...

Mol	Chain	Analysed	Rotameric	Outliers	Percentiles	
2	G	39/167 (23%)	39 (100%)	0	100	100
All	All	1318/1830 (72%)	1313 (100%)	5 (0%)	81	84

All (5) residues with a non-rotameric sidechain are listed below:

Mol	Chain	Res	Type
1	A	475	TYR
1	A	694	LEU
1	A	1088	HIS
1	A	1108	TYR
1	A	1133	TYR

Sometimes sidechains can be flipped to improve hydrogen bonding and reduce clashes. 5 of 11 such sidechains are listed below:

Mol	Chain	Res	Type
1	A	1099	GLN
1	A	1107	ASN
1	A	1585	GLN
1	A	1131	ASN
1	A	604	GLN

5.3.3 RNA ⓘ

There are no RNA molecules in this entry.

5.4 Non-standard residues in protein, DNA, RNA chains ⓘ

There are no non-standard protein/DNA/RNA residues in this entry.

5.5 Carbohydrates ⓘ

5 monosaccharides are modelled in this entry.

In the following table, the Counts columns list the number of bonds (or angles) for which Mogul statistics could be retrieved, the number of bonds (or angles) that are observed in the model and the number of bonds (or angles) that are defined in the Chemical Component Dictionary. The Link column lists molecule types, if any, to which the group is linked. The Z score for a bond length (or angle) is the number of standard deviations the observed value is removed from the

expected value. A bond length (or angle) with $|Z| > 2$ is considered an outlier worth inspection. RMSZ is the root-mean-square of all Z scores of the bond lengths (or angles).

Mol	Type	Chain	Res	Link	Bond lengths			Bond angles		
					Counts	RMSZ	$\# Z > 2$	Counts	RMSZ	$\# Z > 2$
3	NAG	B	1	1,3	14,14,15	0.29	0	17,19,21	0.37	0
3	NAG	B	2	3	14,14,15	0.35	0	17,19,21	0.66	0
3	BMA	B	3	3	11,11,12	0.66	0	15,15,17	0.99	2 (13%)
3	MAN	B	4	3	11,11,12	0.70	0	15,15,17	0.80	1 (6%)
3	MAN	B	5	3	11,11,12	0.63	0	15,15,17	0.91	1 (6%)

In the following table, the Chirals column lists the number of chiral outliers, the number of chiral centers analysed, the number of these observed in the model and the number defined in the Chemical Component Dictionary. Similar counts are reported in the Torsion and Rings columns. '-' means no outliers of that kind were identified.

Mol	Type	Chain	Res	Link	Chirals	Torsions	Rings
3	NAG	B	1	1,3	-	0/6/23/26	0/1/1/1
3	NAG	B	2	3	-	2/6/23/26	0/1/1/1
3	BMA	B	3	3	-	2/2/19/22	0/1/1/1
3	MAN	B	4	3	-	0/2/19/22	0/1/1/1
3	MAN	B	5	3	-	0/2/19/22	0/1/1/1

There are no bond length outliers.

All (4) bond angle outliers are listed below:

Mol	Chain	Res	Type	Atoms	Z	Observed(°)	Ideal(°)
3	B	5	MAN	O2-C2-C3	-2.13	105.73	110.15
3	B	4	MAN	O2-C2-C3	-2.12	105.75	110.15
3	B	3	BMA	C1-C2-C3	-2.08	106.61	109.64
3	B	3	BMA	O3-C3-C2	2.01	114.15	110.05

There are no chirality outliers.

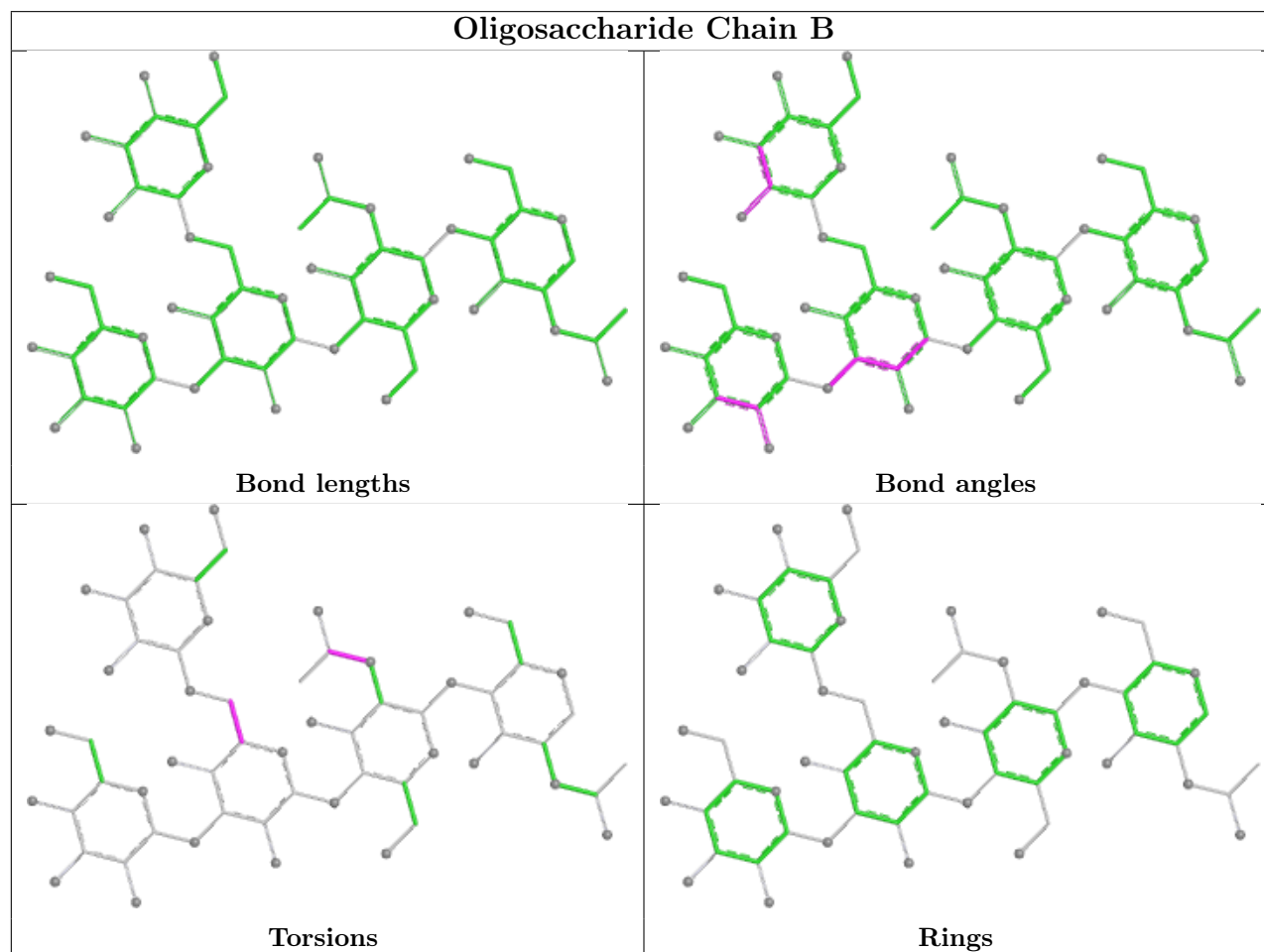
All (4) torsion outliers are listed below:

Mol	Chain	Res	Type	Atoms
3	B	3	BMA	O5-C5-C6-O6
3	B	3	BMA	C4-C5-C6-O6
3	B	2	NAG	C8-C7-N2-C2
3	B	2	NAG	O7-C7-N2-C2

There are no ring outliers.

No monomer is involved in short contacts.

The following is a two-dimensional graphical depiction of Mogul quality analysis of bond lengths, bond angles, torsion angles, and ring geometry for oligosaccharide.



5.6 Ligand geometry [i](#)

25 ligands are modelled in this entry.

In the following table, the Counts columns list the number of bonds (or angles) for which Mogul statistics could be retrieved, the number of bonds (or angles) that are observed in the model and the number of bonds (or angles) that are defined in the Chemical Component Dictionary. The Link column lists molecule types, if any, to which the group is linked. The Z score for a bond length (or angle) is the number of standard deviations the observed value is removed from the expected value. A bond length (or angle) with $|Z| > 2$ is considered an outlier worth inspection. RMSZ is the root-mean-square of all Z scores of the bond lengths (or angles).

Mol	Type	Chain	Res	Link	Bond lengths			Bond angles		
					Counts	RMSZ	$\# Z > 2$	Counts	RMSZ	$\# Z > 2$
5	Y01	A	2024	-	38,38,38	1.14	4 (10%)	57,57,57	2.62	18 (31%)
5	Y01	A	2018	-	38,38,38	1.11	3 (7%)	57,57,57	2.41	14 (24%)

Mol	Type	Chain	Res	Link	Bond lengths			Bond angles		
					Counts	RMSZ	# Z > 2	Counts	RMSZ	# Z > 2
5	Y01	A	2016	-	38,38,38	1.12	3 (7%)	57,57,57	2.63	18 (31%)
5	Y01	A	2022	-	38,38,38	1.09	2 (5%)	57,57,57	2.42	16 (28%)
6	3PE	A	2006	-	48,48,50	0.53	0	51,53,55	0.44	0
5	Y01	A	2017	-	38,38,38	1.14	3 (7%)	57,57,57	2.59	18 (31%)
5	Y01	A	2014	-	38,38,38	1.10	3 (7%)	57,57,57	2.51	16 (28%)
5	Y01	A	2005	-	38,38,38	1.12	3 (7%)	57,57,57	2.46	17 (29%)
5	Y01	A	2003	-	38,38,38	1.10	2 (5%)	57,57,57	2.49	16 (28%)
7	UDP	A	2025	-	25,26,26	3.84	14 (56%)	38,40,40	1.51	5 (13%)
5	Y01	A	2013	-	38,38,38	1.07	3 (7%)	57,57,57	2.82	19 (33%)
5	Y01	A	2004	-	38,38,38	1.09	3 (7%)	57,57,57	2.41	16 (28%)
5	Y01	A	2012	-	38,38,38	1.10	3 (7%)	57,57,57	2.34	12 (21%)
5	Y01	A	2010	-	38,38,38	1.13	3 (7%)	57,57,57	2.52	16 (28%)
5	Y01	A	2002	-	38,38,38	1.11	2 (5%)	57,57,57	2.46	16 (28%)
4	NAG	A	2001	-	14,14,15	0.33	0	17,19,21	1.05	1 (5%)
5	Y01	A	2021	-	38,38,38	1.11	3 (7%)	57,57,57	2.58	17 (29%)
5	Y01	A	2009	-	38,38,38	1.10	3 (7%)	57,57,57	2.38	14 (24%)
5	Y01	A	2011	-	38,38,38	1.09	3 (7%)	57,57,57	2.47	15 (26%)
5	Y01	A	2023	-	38,38,38	1.13	3 (7%)	57,57,57	2.39	13 (22%)
5	Y01	A	2008	-	38,38,38	1.12	3 (7%)	57,57,57	2.80	20 (35%)
5	Y01	A	2019	-	38,38,38	1.11	2 (5%)	57,57,57	2.38	16 (28%)
5	Y01	A	2015	-	38,38,38	1.10	2 (5%)	57,57,57	2.44	15 (26%)
5	Y01	A	2020	-	38,38,38	1.14	3 (7%)	57,57,57	2.74	20 (35%)
5	Y01	A	2007	-	38,38,38	1.10	3 (7%)	57,57,57	2.35	13 (22%)

In the following table, the Chirals column lists the number of chiral outliers, the number of chiral centers analysed, the number of these observed in the model and the number defined in the Chemical Component Dictionary. Similar counts are reported in the Torsion and Rings columns. '-' means no outliers of that kind were identified.

Mol	Type	Chain	Res	Link	Chirals	Torsions	Rings
5	Y01	A	2024	-	-	9/19/77/77	0/4/4/4
5	Y01	A	2018	-	-	6/19/77/77	0/4/4/4
5	Y01	A	2016	-	-	15/19/77/77	0/4/4/4
5	Y01	A	2022	-	-	12/19/77/77	0/4/4/4
6	3PE	A	2006	-	-	18/52/52/54	-
5	Y01	A	2017	-	-	10/19/77/77	0/4/4/4

Continued on next page...

Continued from previous page...

Mol	Type	Chain	Res	Link	Chirals	Torsions	Rings
5	Y01	A	2014	-	-	12/19/77/77	0/4/4/4
5	Y01	A	2005	-	-	7/19/77/77	0/4/4/4
5	Y01	A	2003	-	-	11/19/77/77	0/4/4/4
7	UDP	A	2025	-	-	2/16/32/32	0/2/2/2
5	Y01	A	2013	-	-	9/19/77/77	0/4/4/4
5	Y01	A	2004	-	-	5/19/77/77	0/4/4/4
5	Y01	A	2012	-	-	8/19/77/77	0/4/4/4
5	Y01	A	2010	-	-	10/19/77/77	0/4/4/4
5	Y01	A	2002	-	-	11/19/77/77	0/4/4/4
4	NAG	A	2001	-	-	0/6/23/26	0/1/1/1
5	Y01	A	2021	-	-	12/19/77/77	0/4/4/4
5	Y01	A	2009	-	-	8/19/77/77	0/4/4/4
5	Y01	A	2011	-	-	9/19/77/77	0/4/4/4
5	Y01	A	2023	-	-	10/19/77/77	0/4/4/4
5	Y01	A	2008	-	-	7/19/77/77	0/4/4/4
5	Y01	A	2019	-	-	10/19/77/77	0/4/4/4
5	Y01	A	2015	-	-	9/19/77/77	0/4/4/4
5	Y01	A	2020	-	-	13/19/77/77	0/4/4/4
5	Y01	A	2007	-	-	8/19/77/77	0/4/4/4

The worst 5 of 76 bond length outliers are listed below:

Mol	Chain	Res	Type	Atoms	Z	Observed(Å)	Ideal(Å)
7	A	2025	UDP	O4'-C4'	7.49	1.61	1.45
7	A	2025	UDP	C3'-C4'	-7.31	1.34	1.53
7	A	2025	UDP	C2-N1	7.07	1.49	1.38
7	A	2025	UDP	C2-N3	6.66	1.49	1.38
7	A	2025	UDP	C6-C5	6.08	1.49	1.35

The worst 5 of 361 bond angle outliers are listed below:

Mol	Chain	Res	Type	Atoms	Z	Observed(°)	Ideal(°)
5	A	2009	Y01	CAT-CBH-CBF	-10.12	95.34	108.74
5	A	2003	Y01	CAT-CBH-CBF	-10.01	95.49	108.74
5	A	2007	Y01	CAT-CBH-CBF	-9.96	95.55	108.74
5	A	2021	Y01	CAT-CBH-CBF	-9.94	95.58	108.74
5	A	2018	Y01	CAT-CBH-CBF	-9.89	95.64	108.74

There are no chirality outliers.

5 of 231 torsion outliers are listed below:

Mol	Chain	Res	Type	Atoms
5	A	2003	Y01	CAV-CBC-OAW-CAY
5	A	2003	Y01	CAM-CAY-OAW-CBC
5	A	2007	Y01	OAG-CAY-OAW-CBC
5	A	2008	Y01	CAM-CAY-OAW-CBC
5	A	2010	Y01	OAG-CAY-OAW-CBC

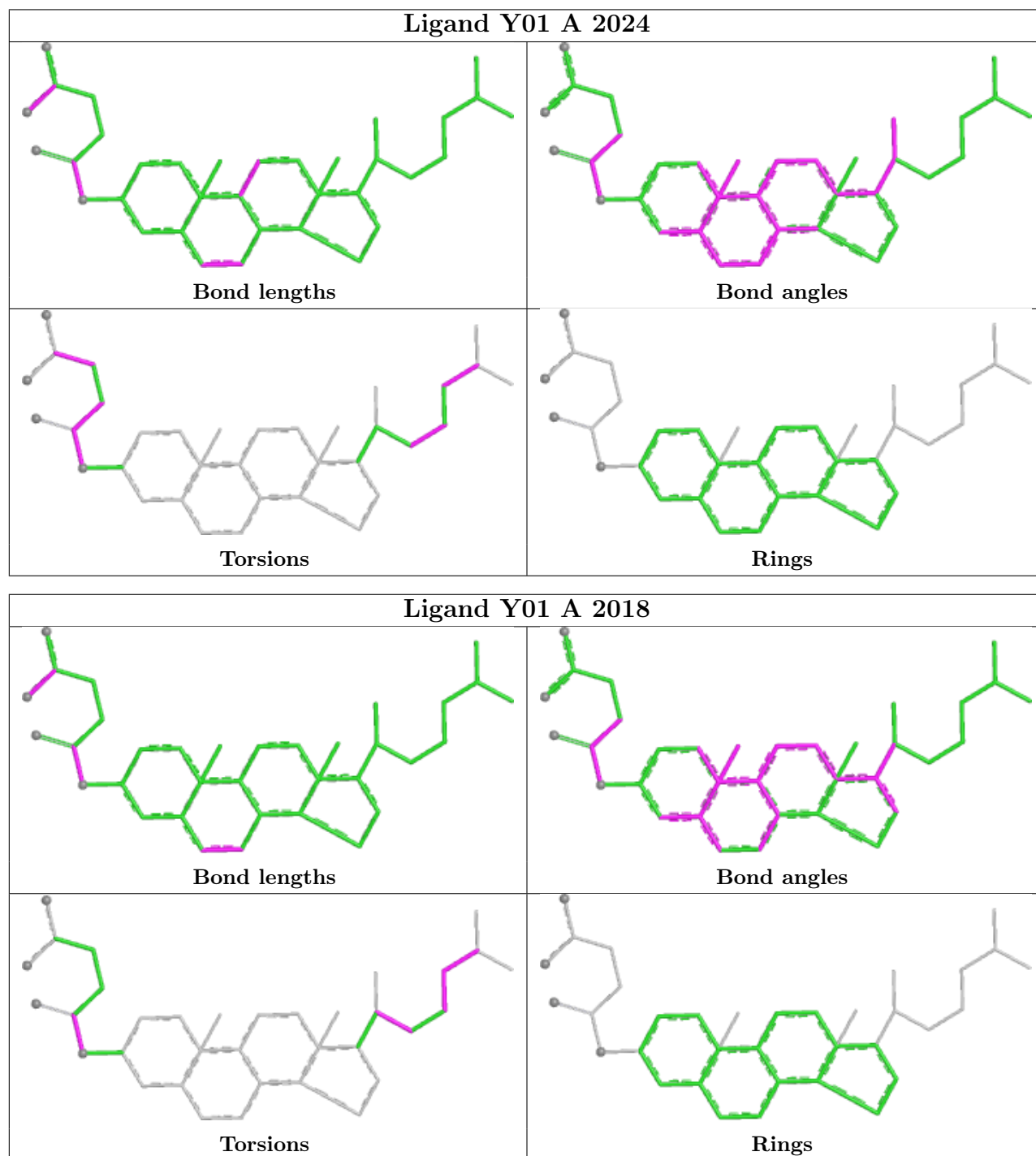
There are no ring outliers.

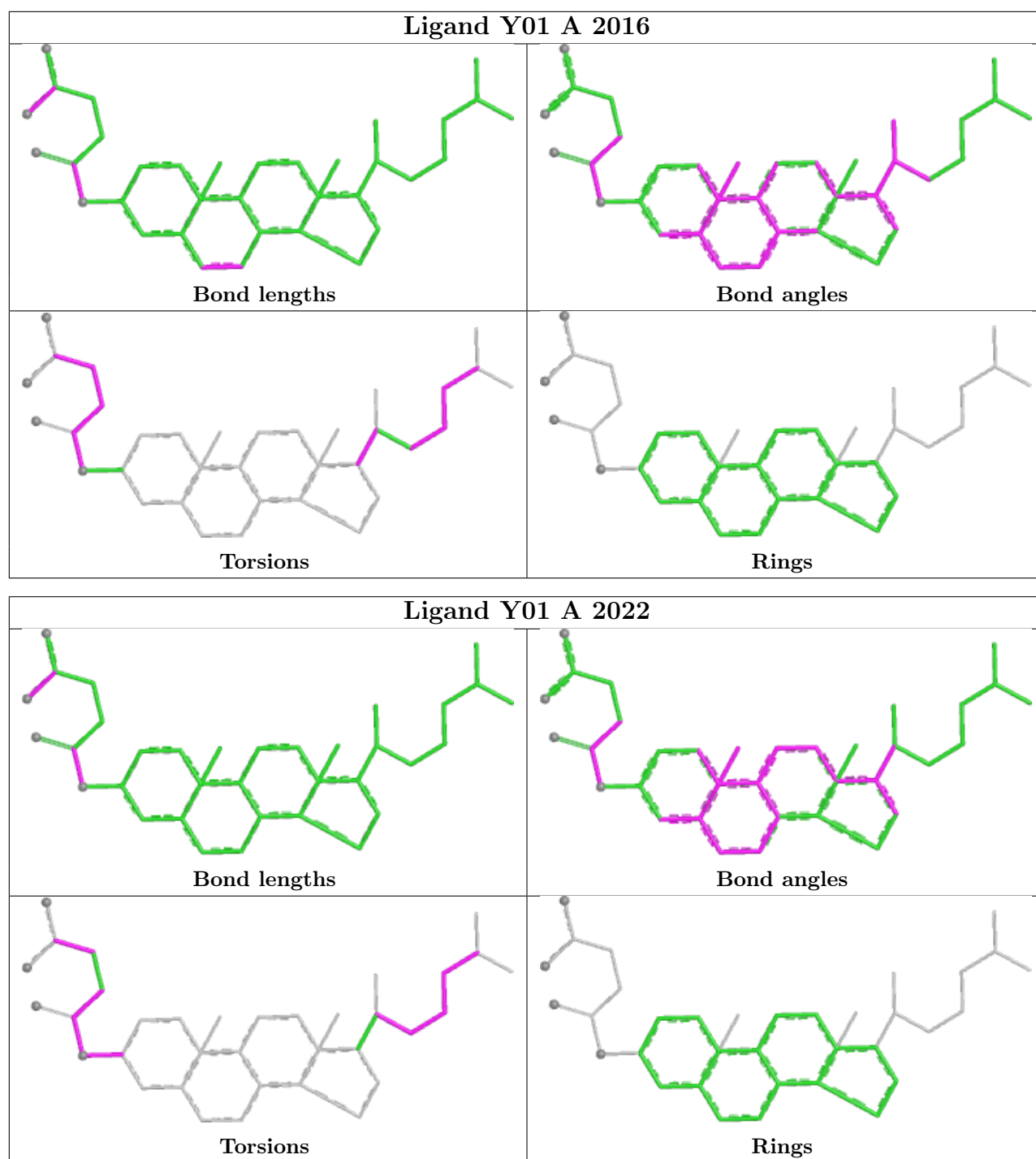
21 monomers are involved in 37 short contacts:

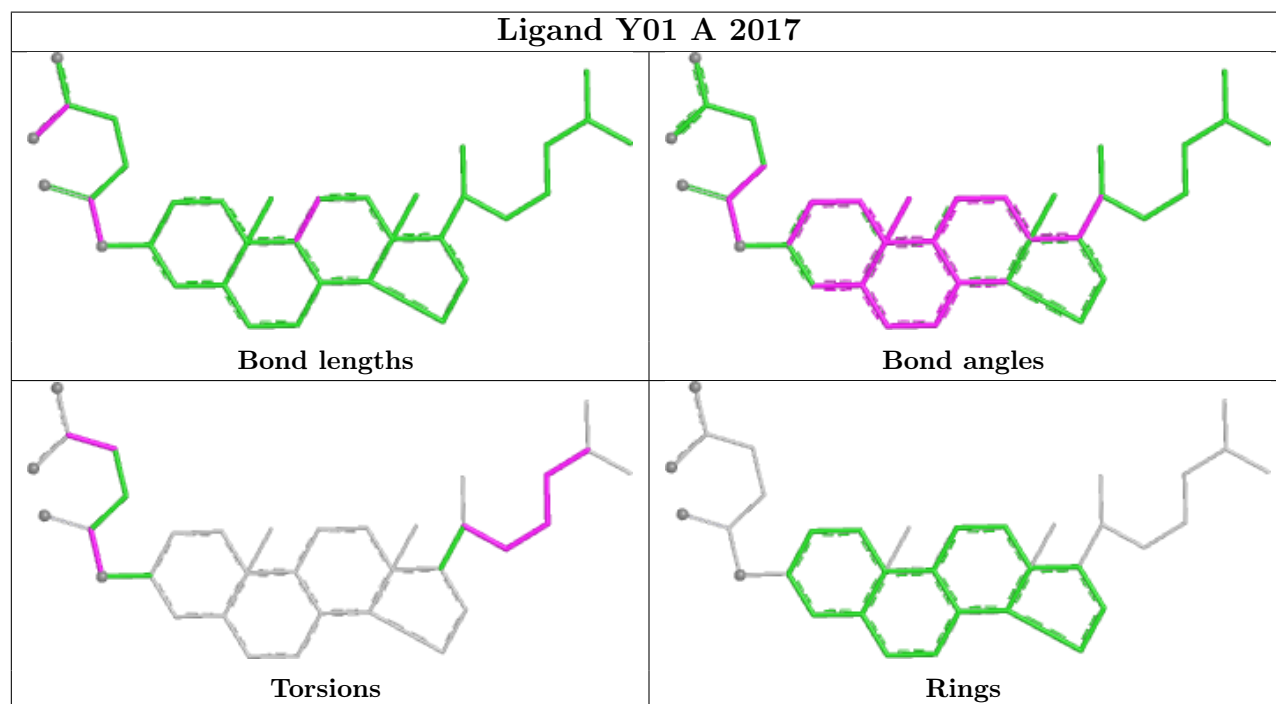
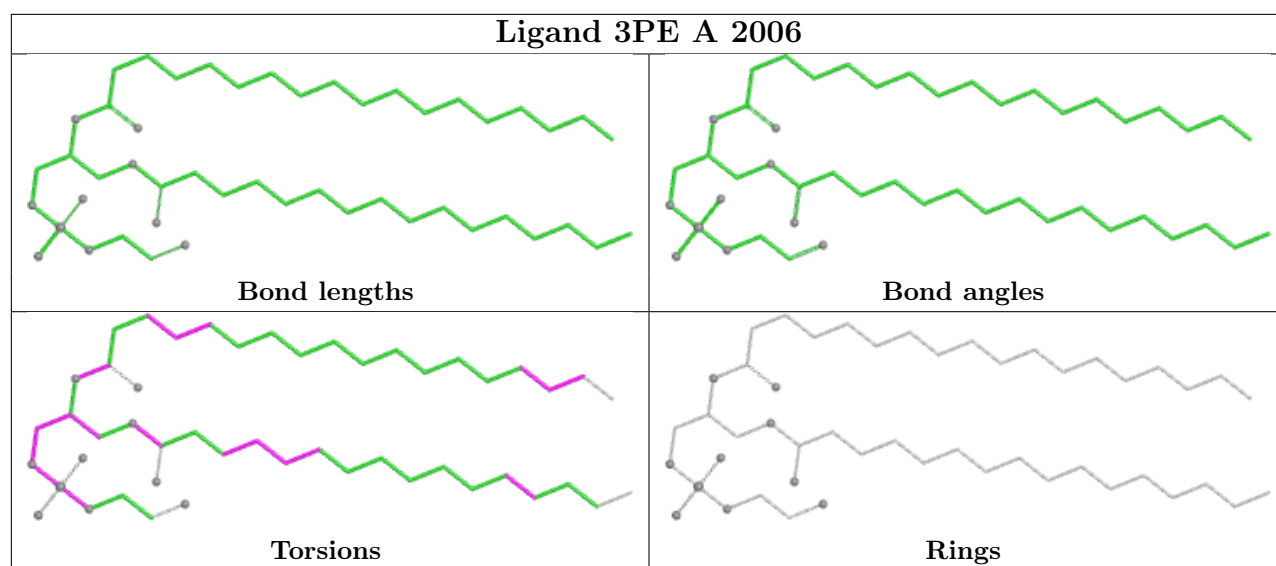
Mol	Chain	Res	Type	Clashes	Symm-Clashes
5	A	2024	Y01	2	0
5	A	2016	Y01	2	0
5	A	2022	Y01	1	0
6	A	2006	3PE	1	0
5	A	2014	Y01	2	0
5	A	2005	Y01	1	0
5	A	2003	Y01	5	0
7	A	2025	UDP	1	0
5	A	2013	Y01	6	0
5	A	2004	Y01	1	0
5	A	2012	Y01	2	0
5	A	2010	Y01	1	0
5	A	2002	Y01	1	0
5	A	2021	Y01	3	0
5	A	2009	Y01	5	0
5	A	2011	Y01	1	0
5	A	2023	Y01	1	0
5	A	2008	Y01	3	0
5	A	2019	Y01	1	0
5	A	2015	Y01	1	0
5	A	2007	Y01	2	0

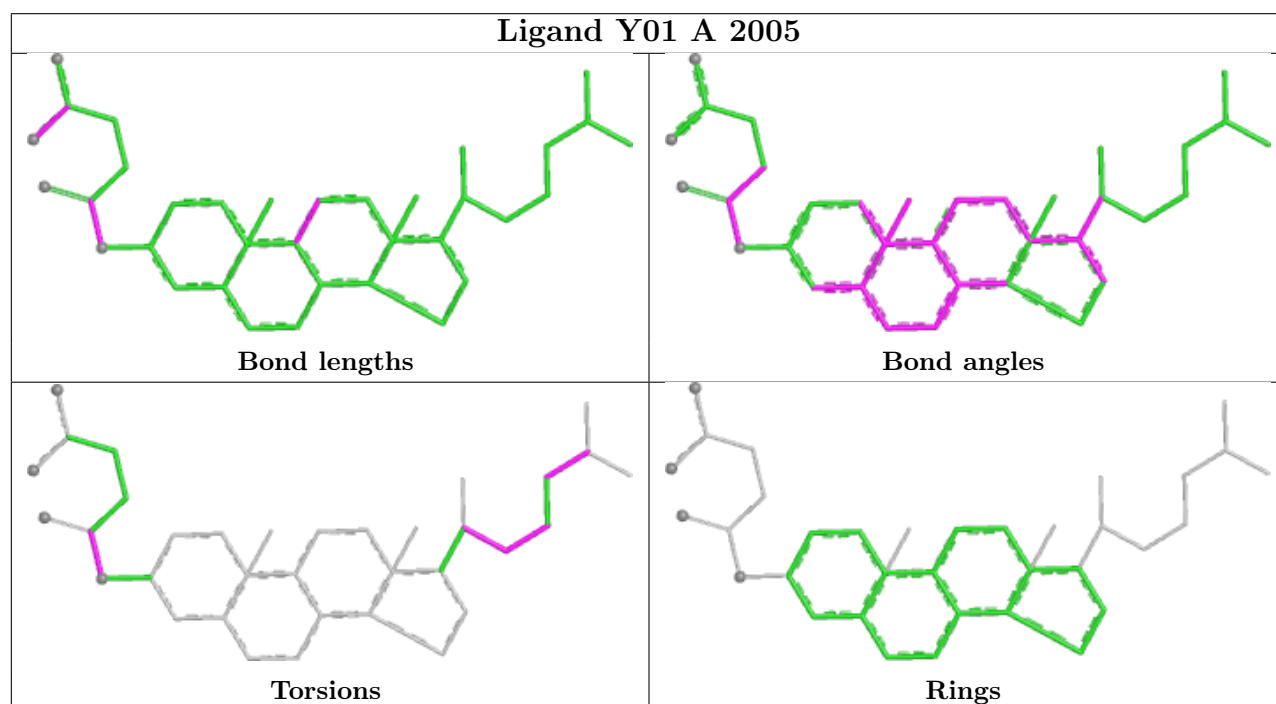
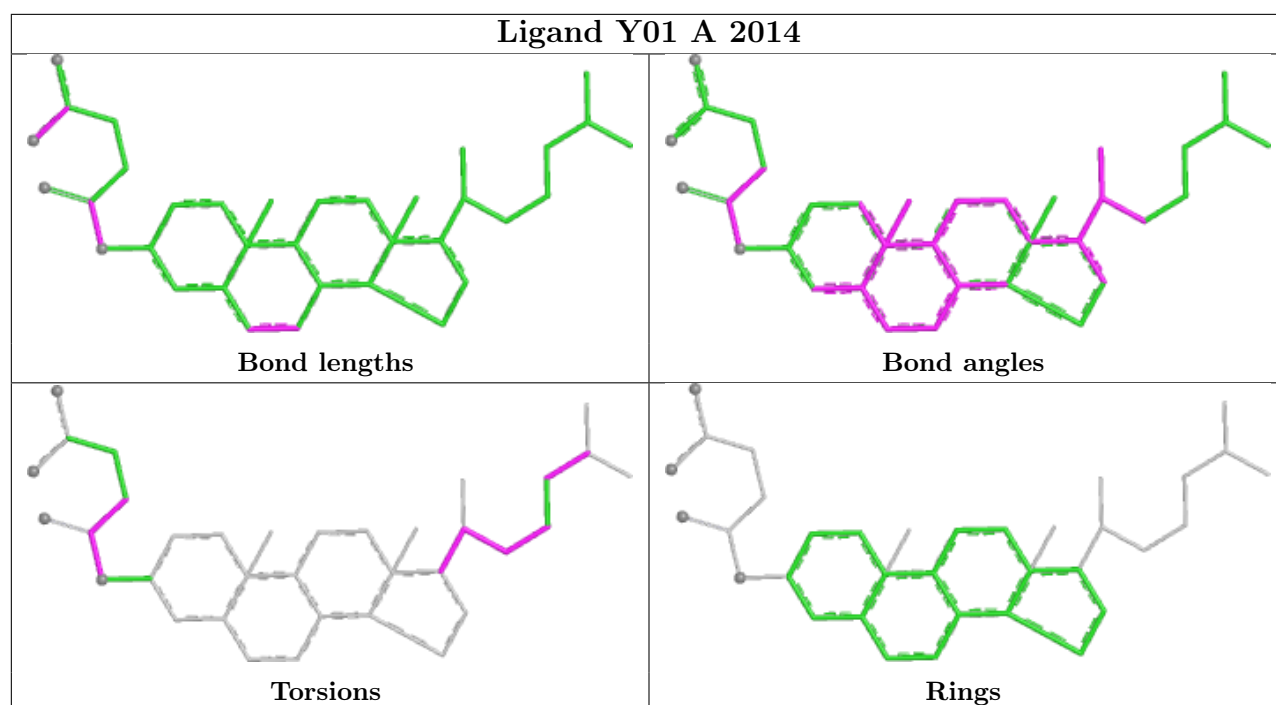
The following is a two-dimensional graphical depiction of Mogul quality analysis of bond lengths, bond angles, torsion angles, and ring geometry for all instances of the Ligand of Interest. In addition, ligands with molecular weight > 250 and outliers as shown on the validation Tables will also be included. For torsion angles, if less than 5% of the Mogul distribution of torsion angles is within 10 degrees of the torsion angle in question, then that torsion angle is considered an outlier. Any bond that is central to one or more torsion angles identified as an outlier by Mogul will be highlighted in the graph. For rings, the root-mean-square deviation (RMSD) between the ring in question and similar rings identified by Mogul is calculated over all ring torsion angles. If the

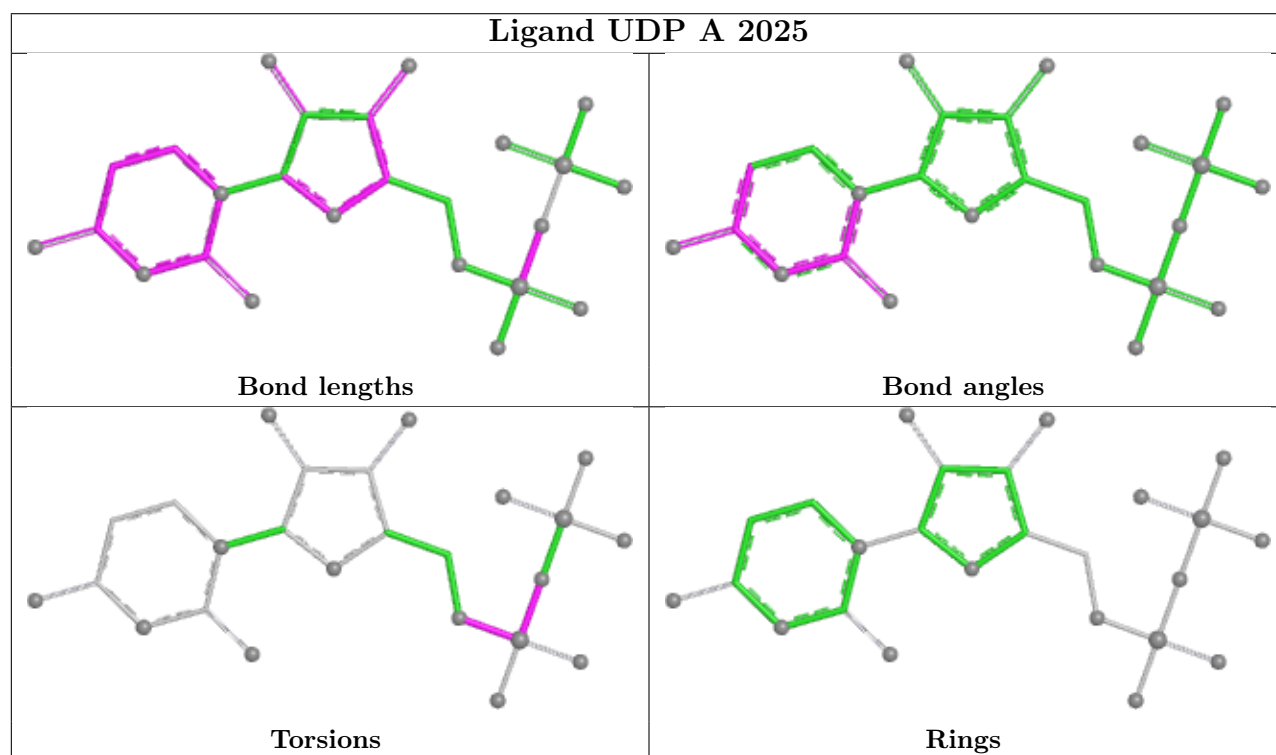
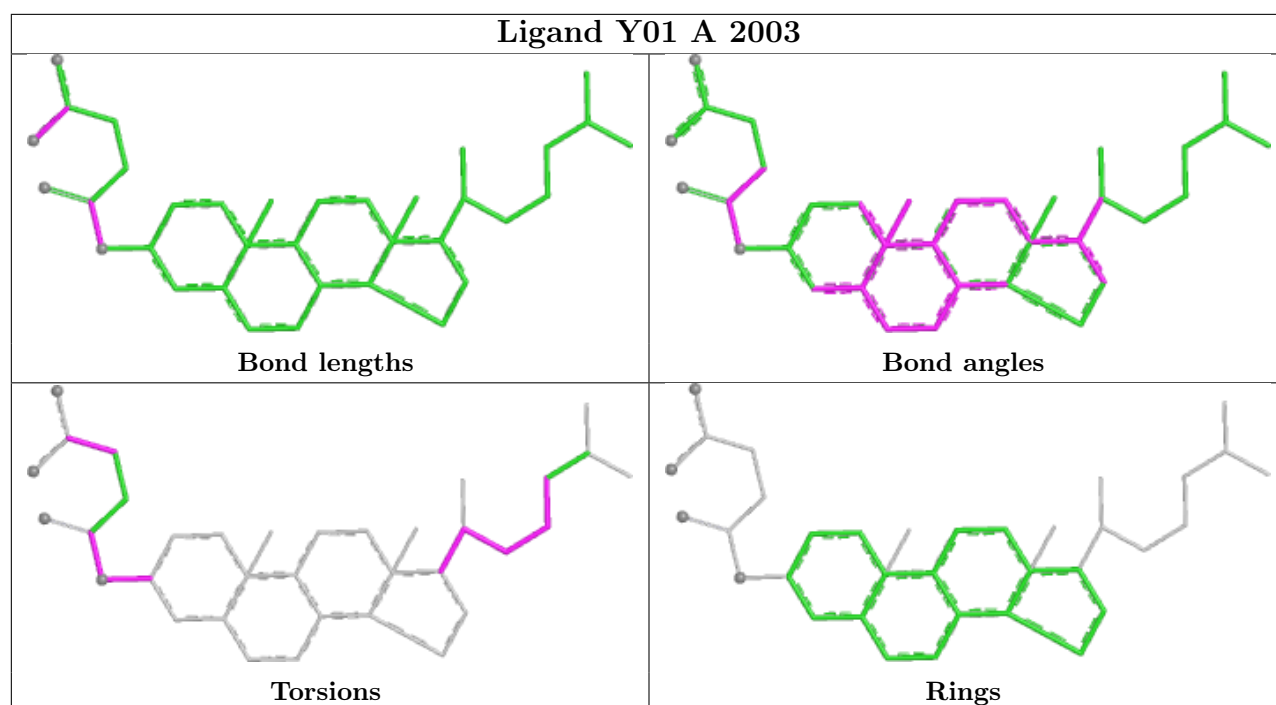
average RMSD is greater than 60 degrees and the minimal RMSD between the ring in question and any Mogul-identified rings is also greater than 60 degrees, then that ring is considered an outlier. The outliers are highlighted in purple. The color gray indicates Mogul did not find sufficient equivalents in the CSD to analyse the geometry.

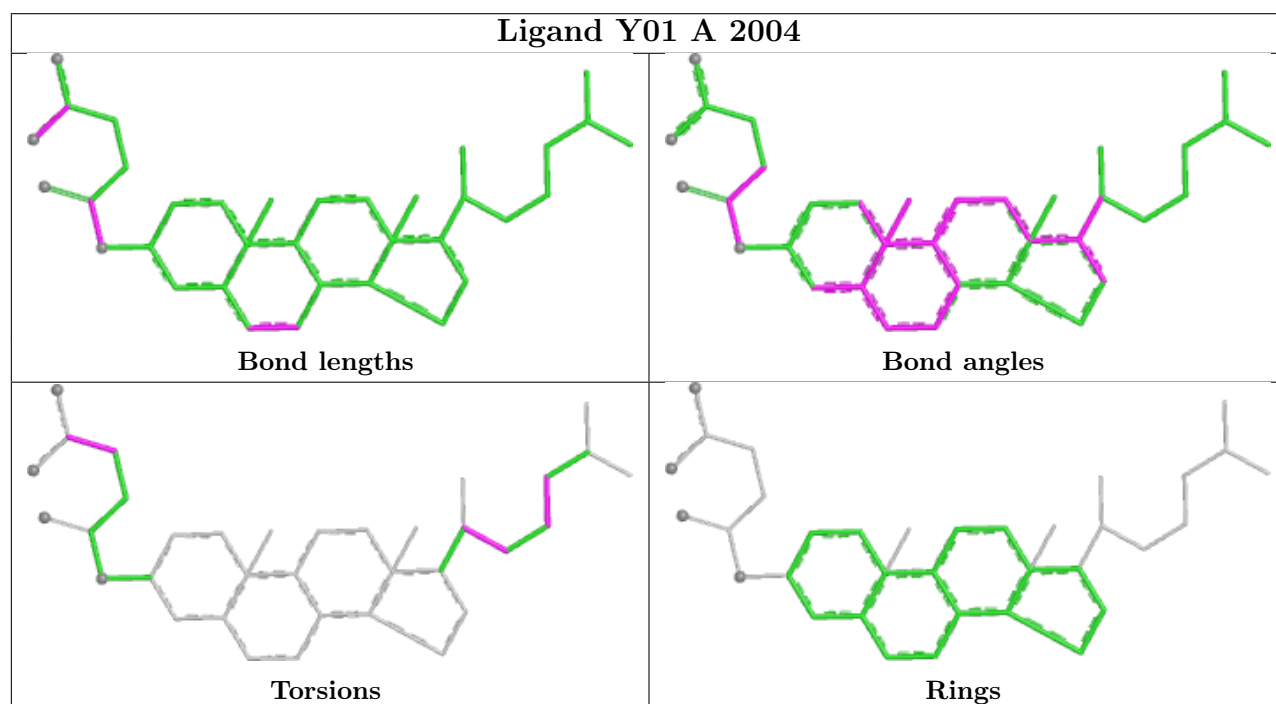
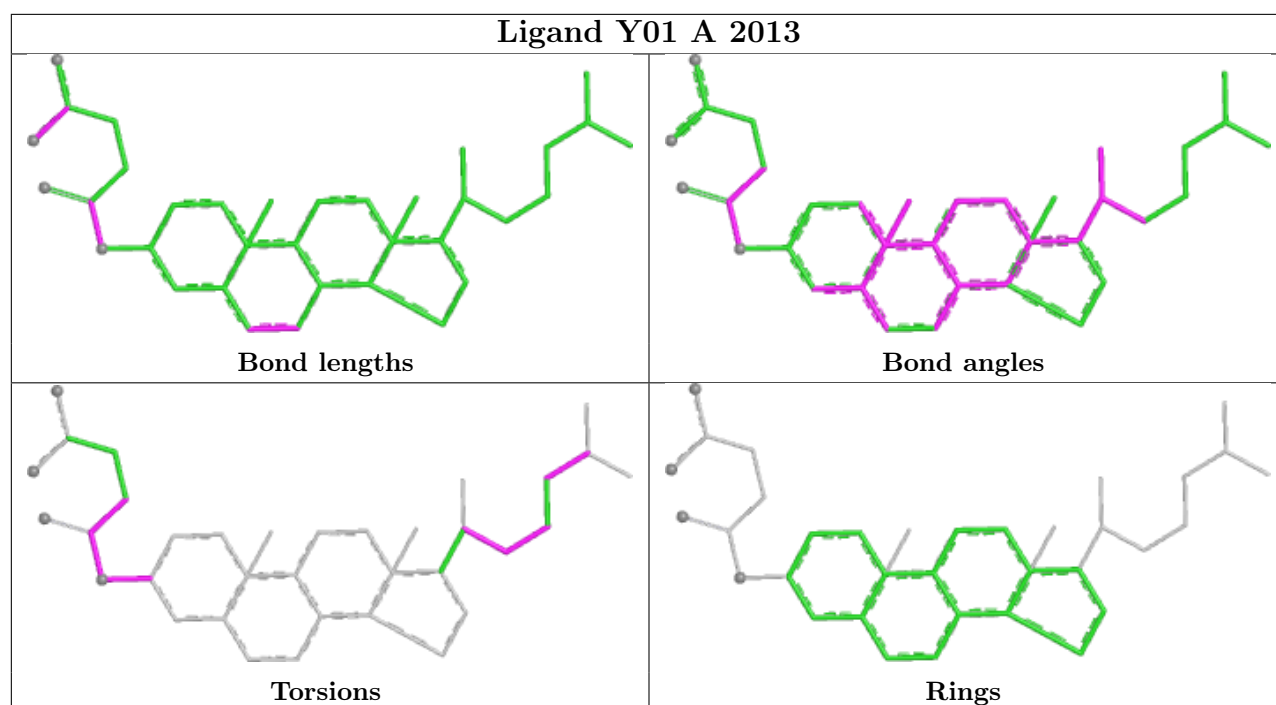


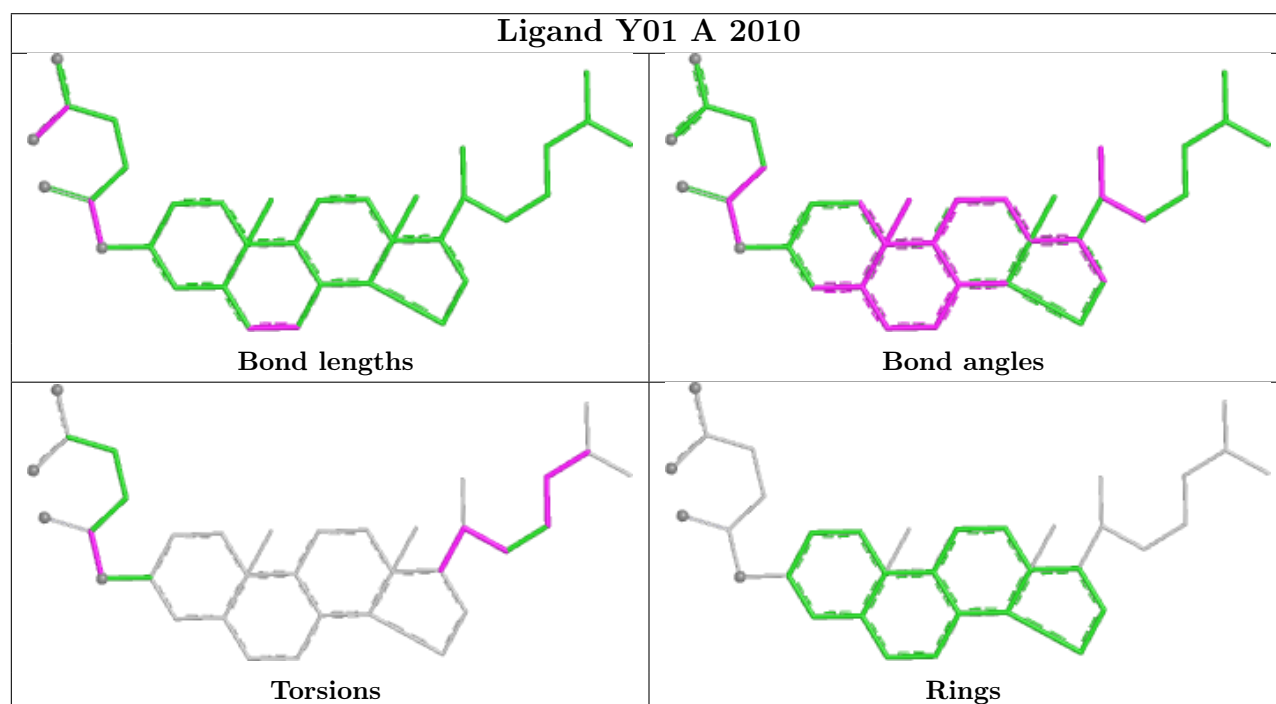
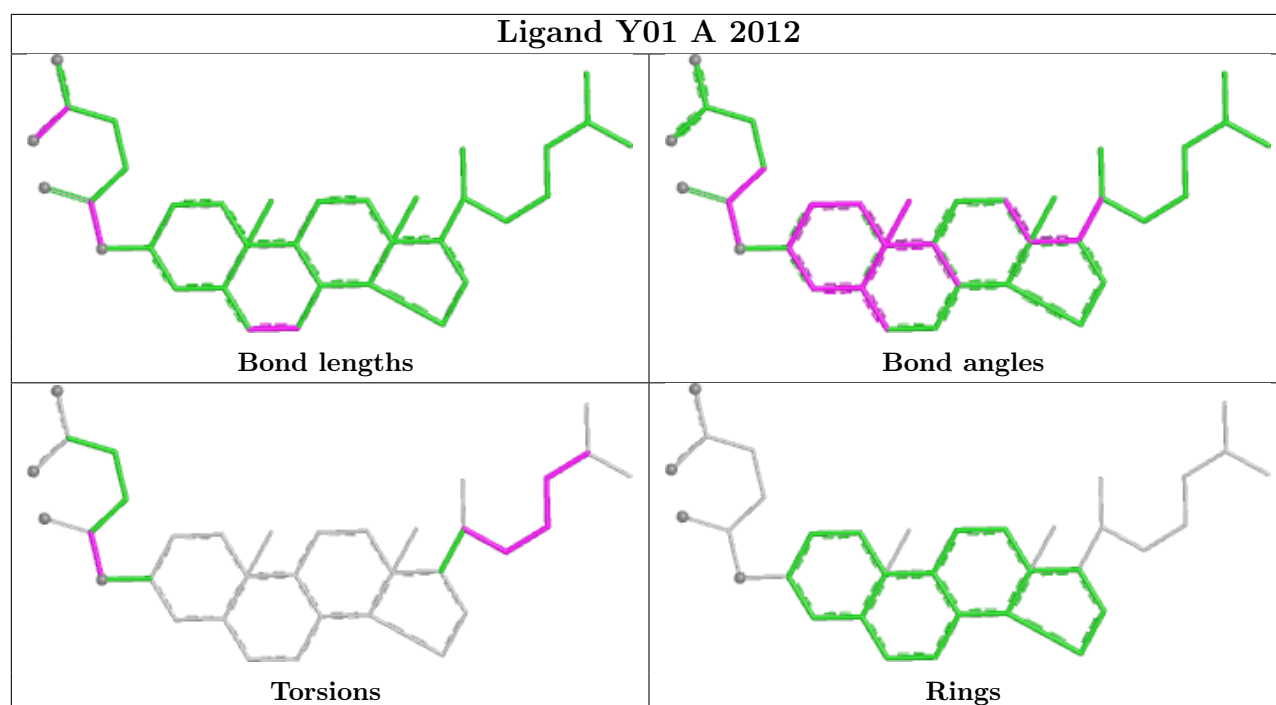


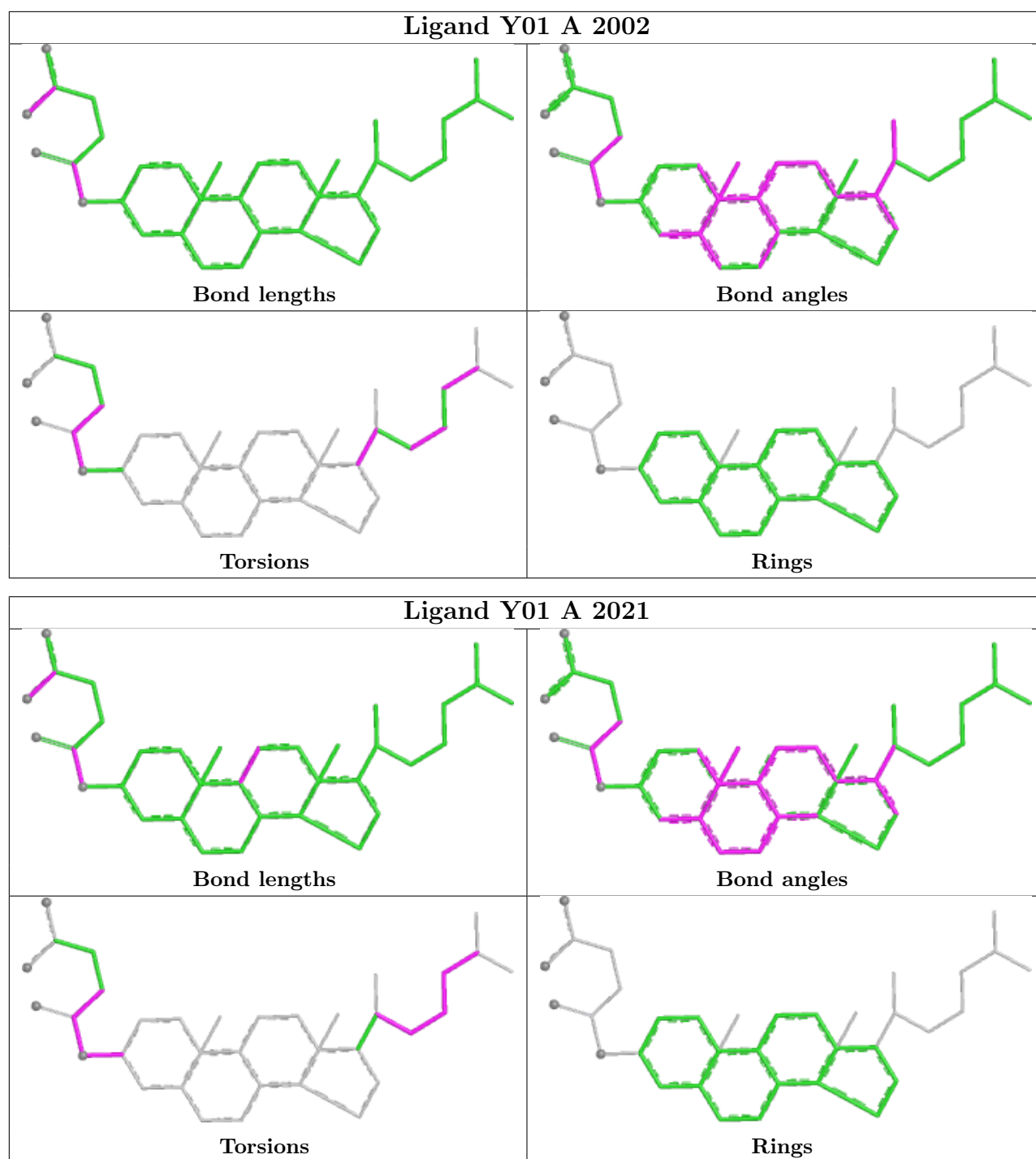


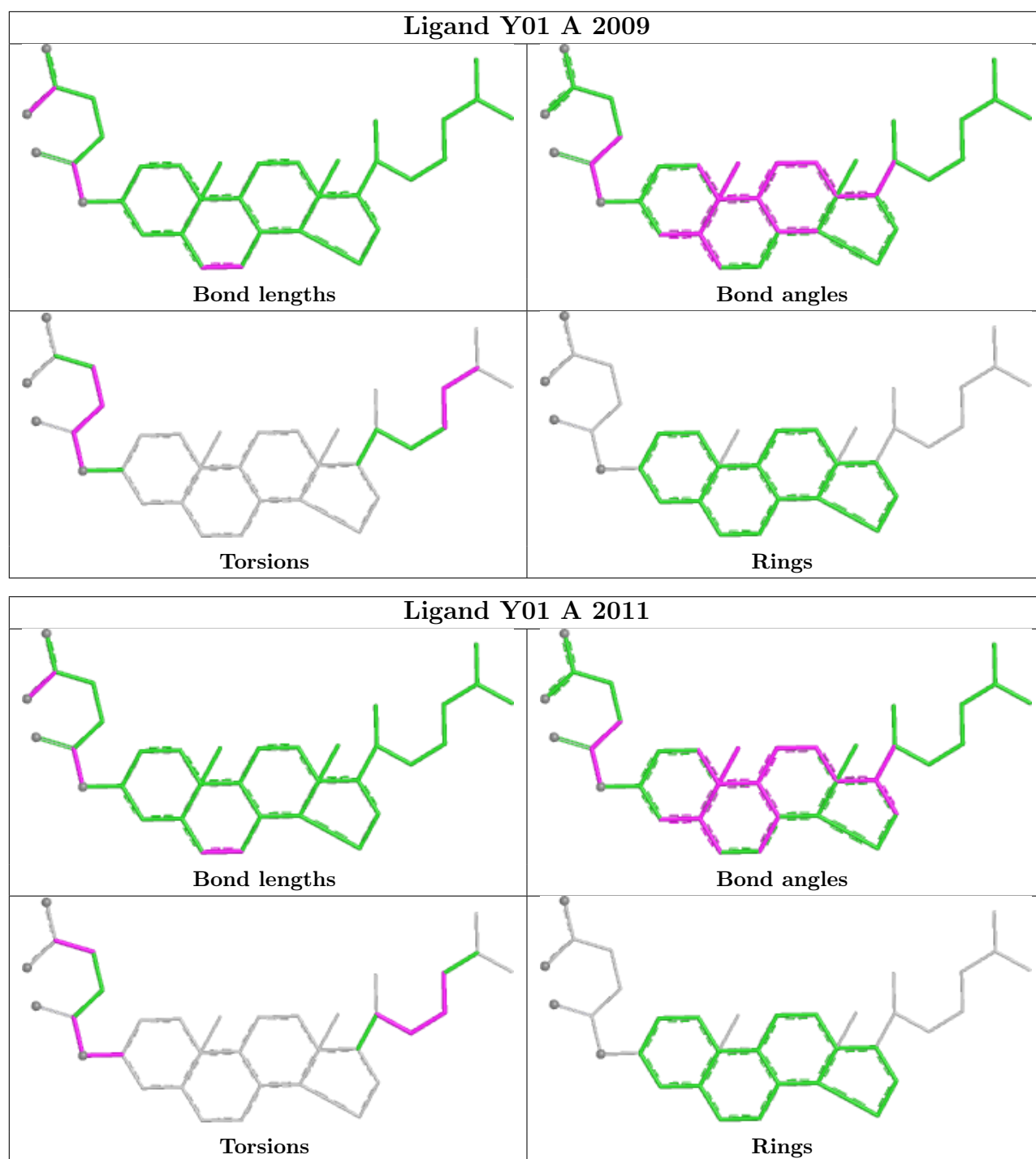


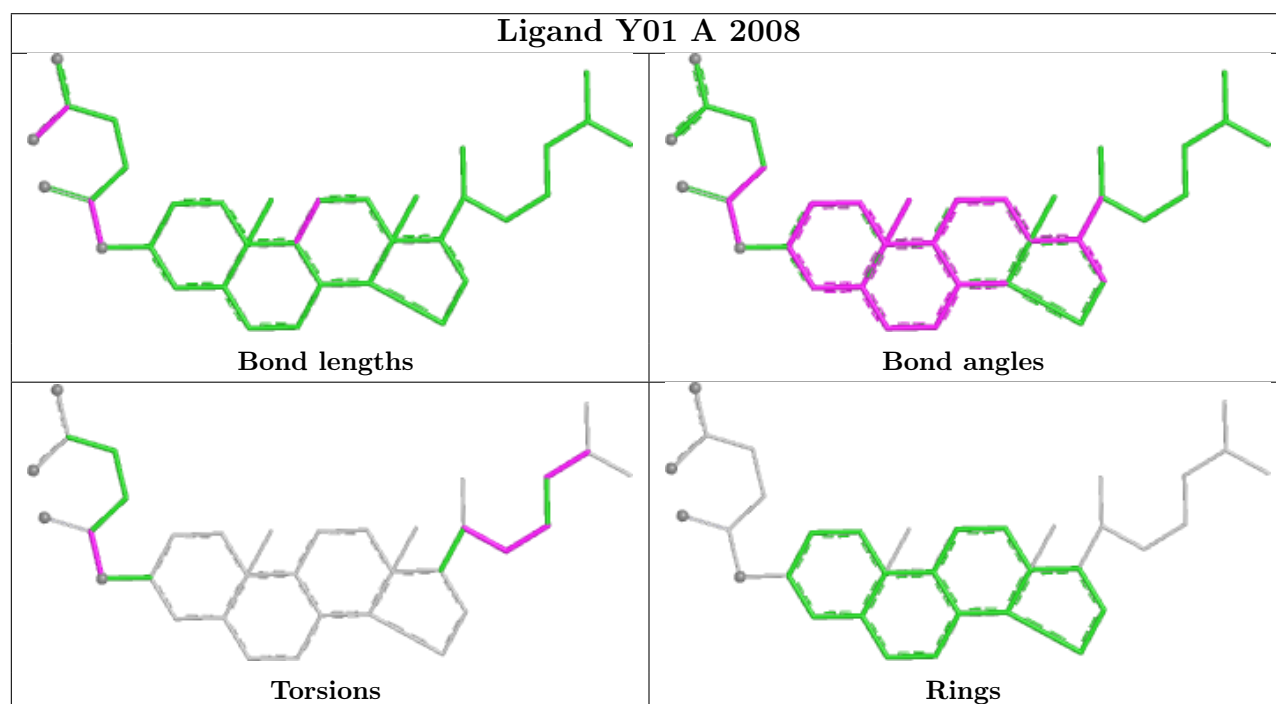
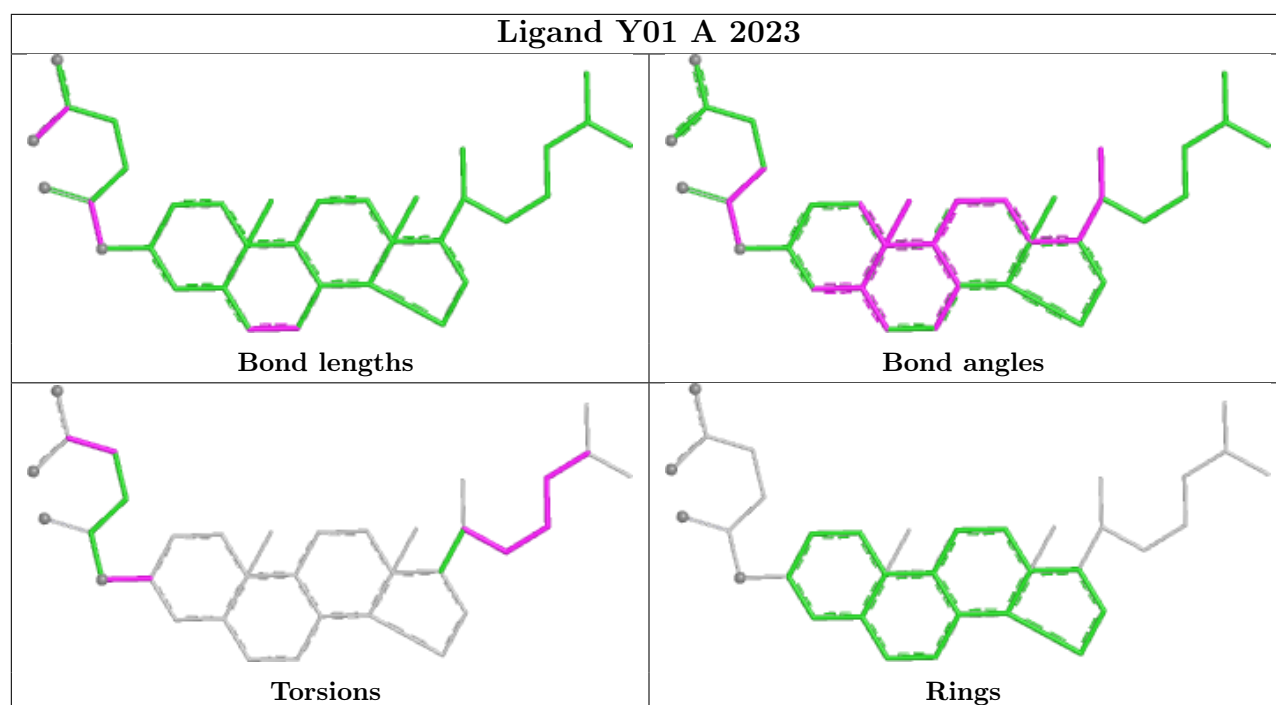


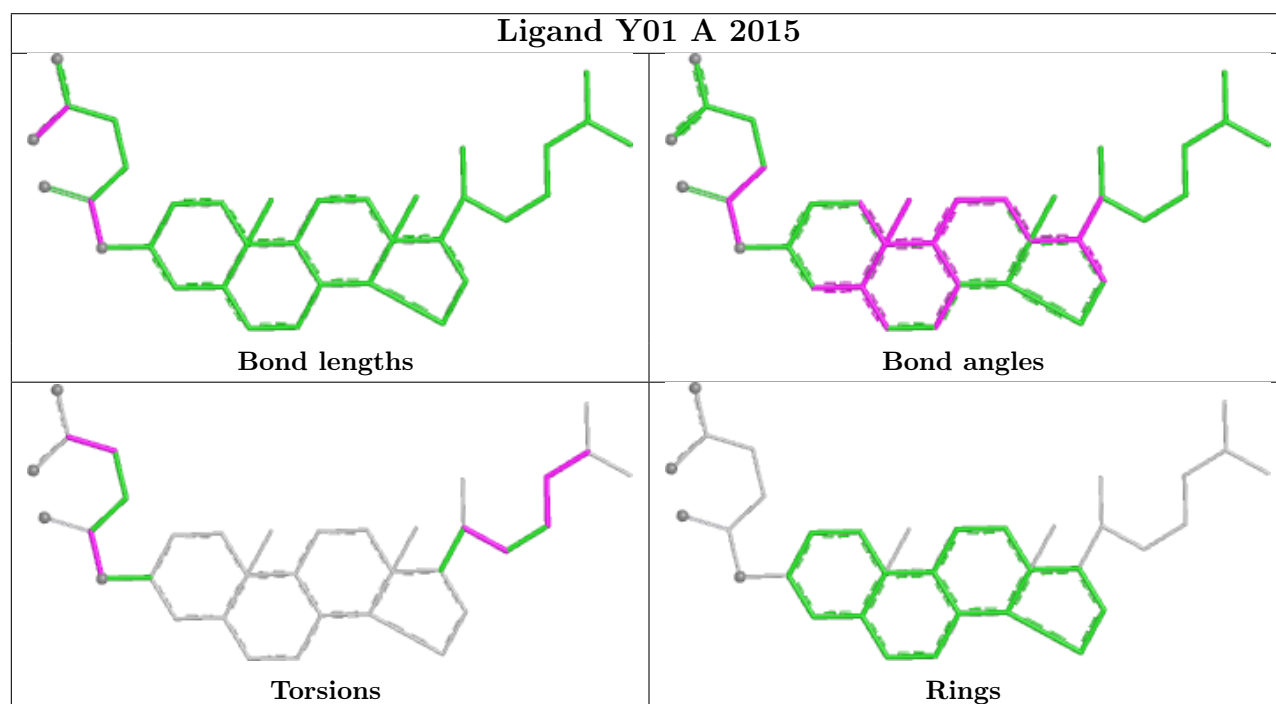
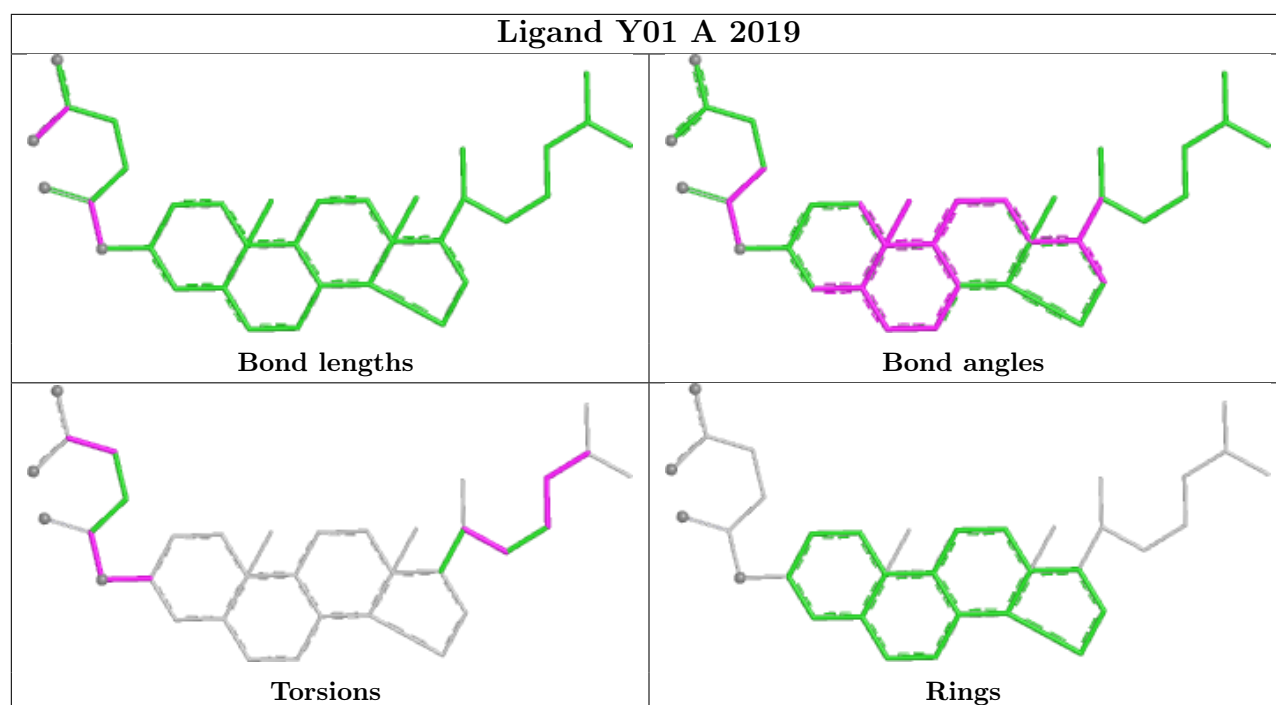


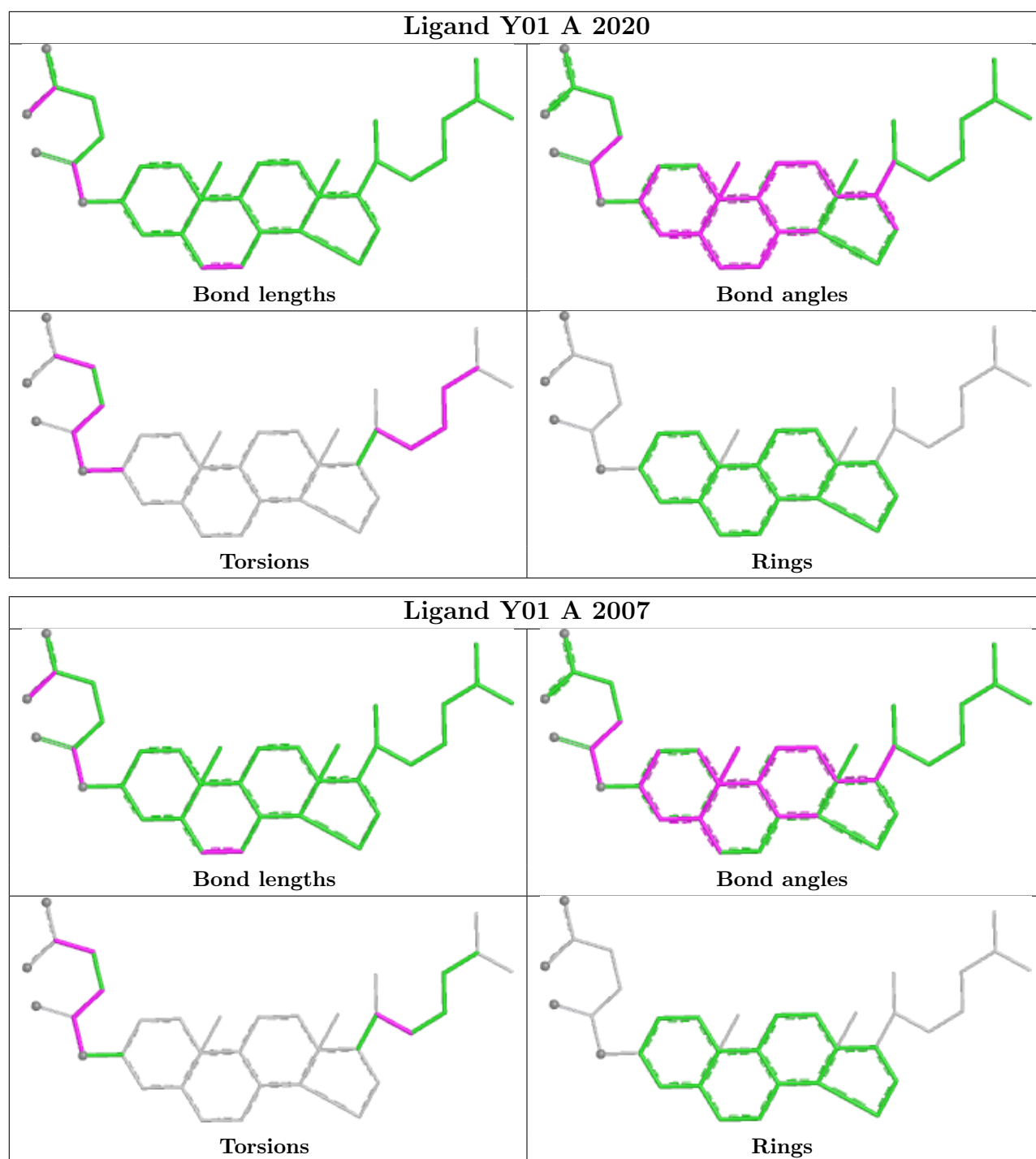












5.7 Other polymers [i](#)

There are no such residues in this entry.

5.8 Polymer linkage issues [i](#)

There are no chain breaks in this entry.

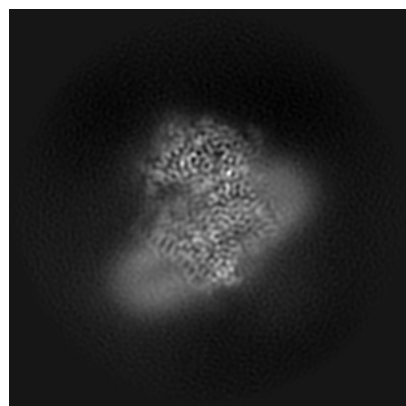
6 Map visualisation [i](#)

This section contains visualisations of the EMDB entry EMD-71552. These allow visual inspection of the internal detail of the map and identification of artifacts.

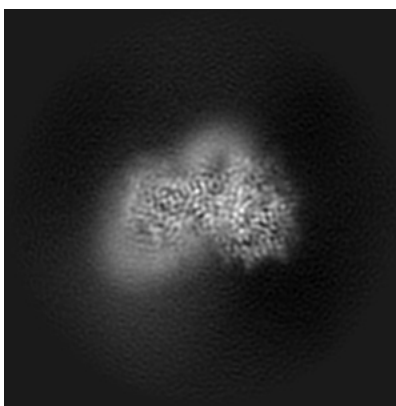
Images derived from a raw map, generated by summing the deposited half-maps, are presented below the corresponding image components of the primary map to allow further visual inspection and comparison with those of the primary map.

6.1 Orthogonal projections [i](#)

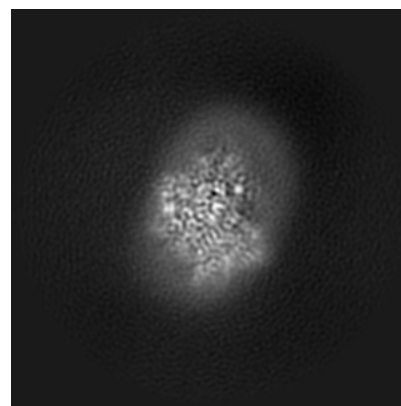
6.1.1 Primary map



X

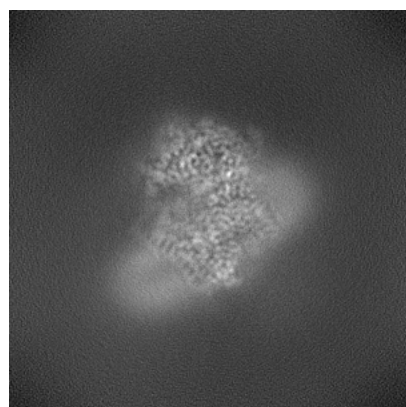


Y

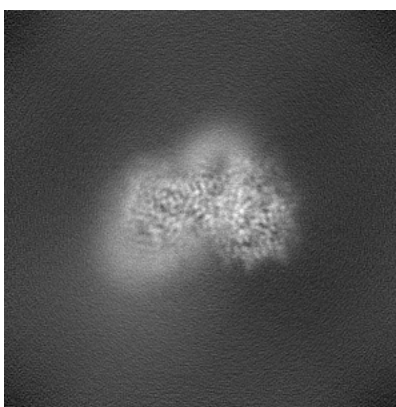


Z

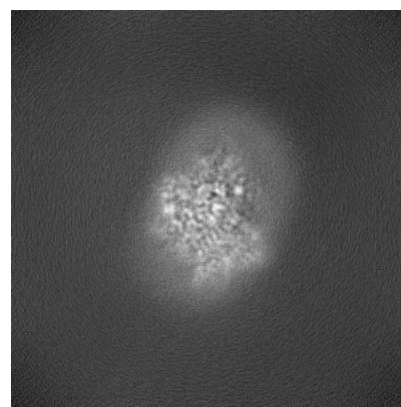
6.1.2 Raw map



X



Y

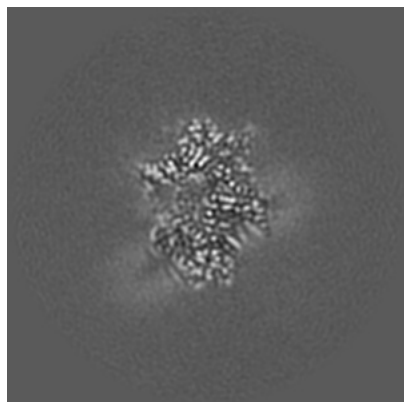


Z

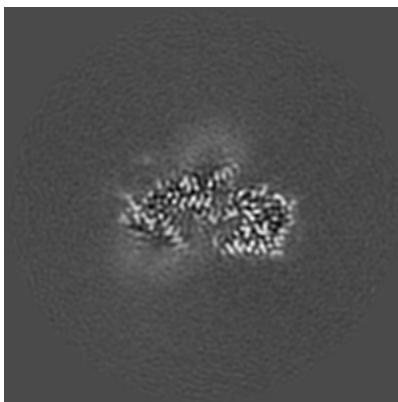
The images above show the map projected in three orthogonal directions.

6.2 Central slices [i](#)

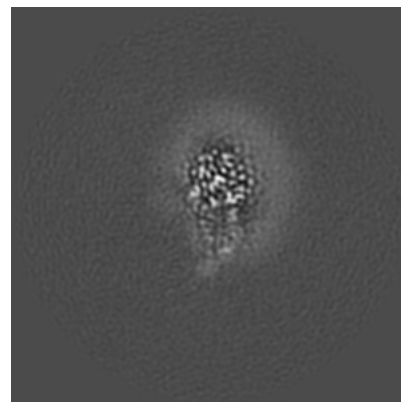
6.2.1 Primary map



X Index: 160

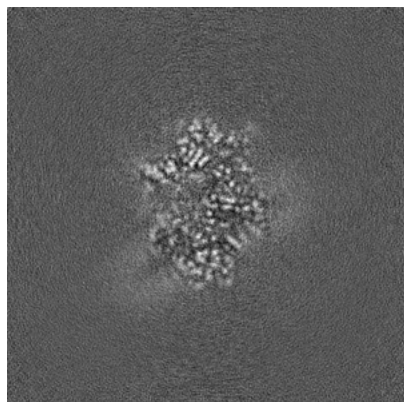


Y Index: 160

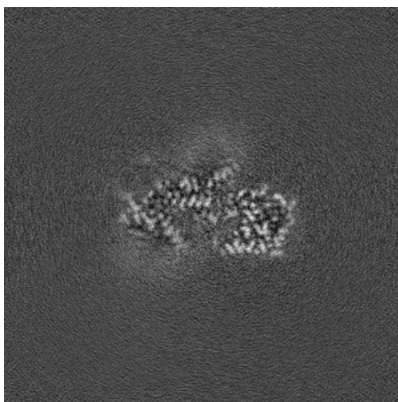


Z Index: 160

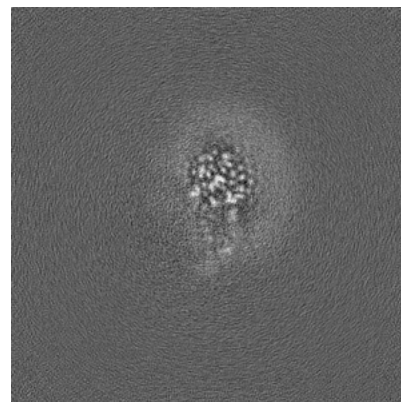
6.2.2 Raw map



X Index: 160



Y Index: 160

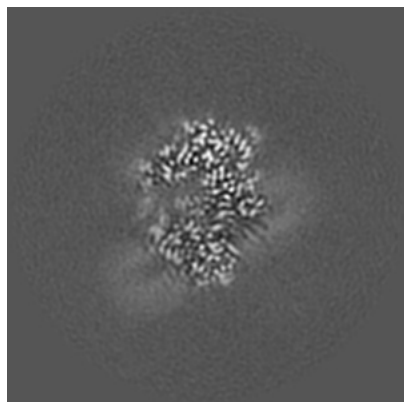


Z Index: 160

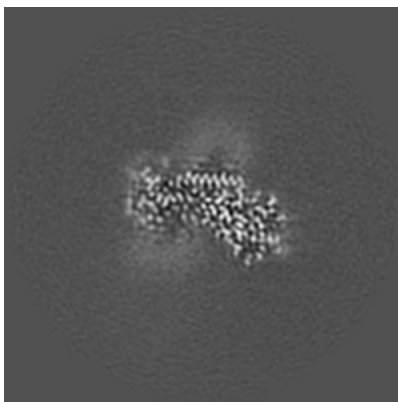
The images above show central slices of the map in three orthogonal directions.

6.3 Largest variance slices [i](#)

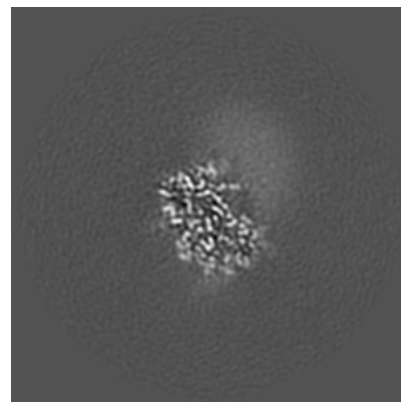
6.3.1 Primary map



X Index: 156

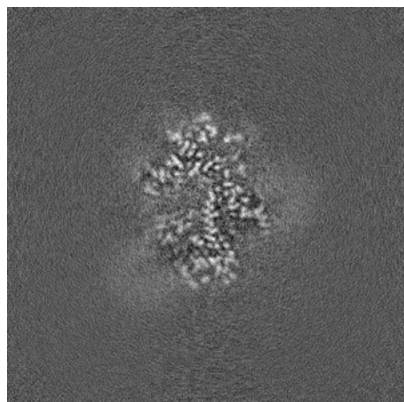


Y Index: 175

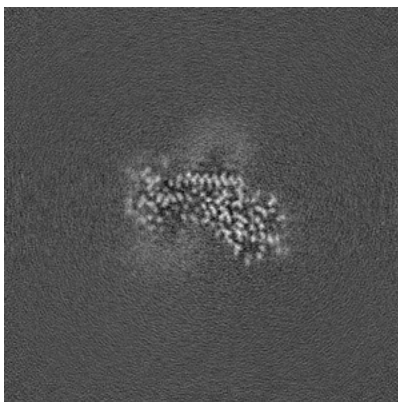


Z Index: 190

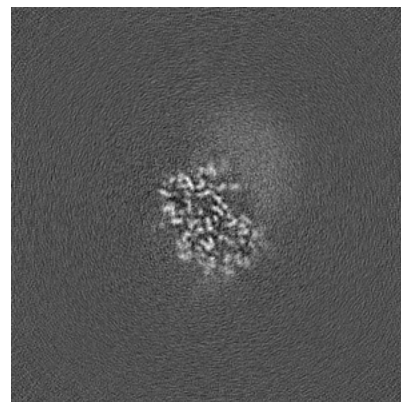
6.3.2 Raw map



X Index: 163



Y Index: 175

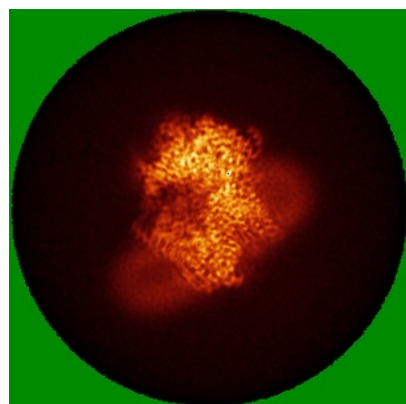


Z Index: 190

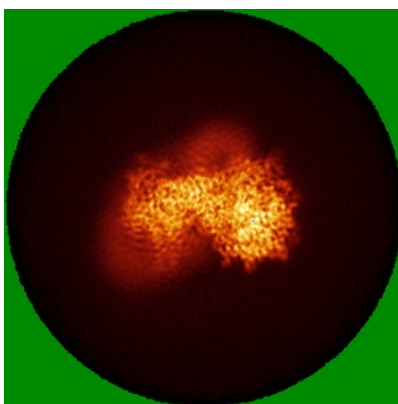
The images above show the largest variance slices of the map in three orthogonal directions.

6.4 Orthogonal standard-deviation projections (False-color) [i](#)

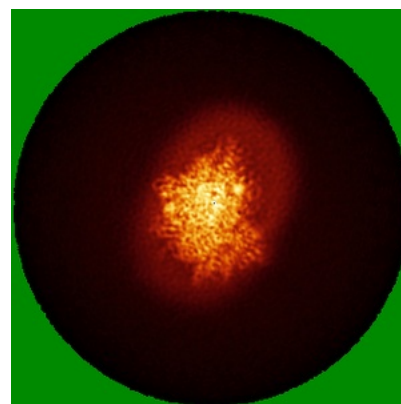
6.4.1 Primary map



X

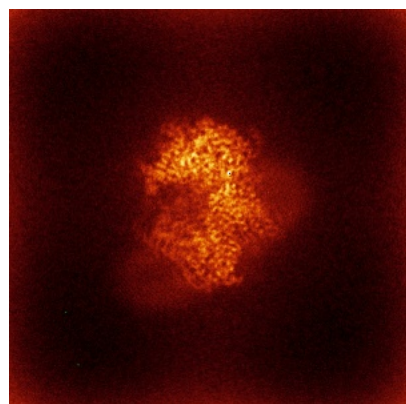


Y

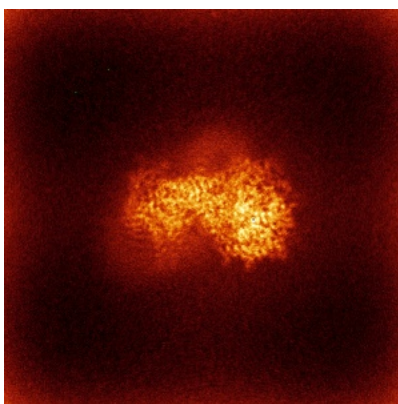


Z

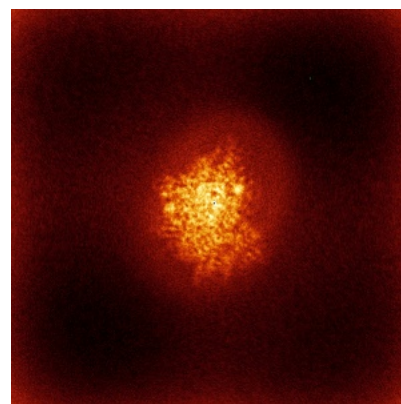
6.4.2 Raw map



X



Y



Z

The images above show the map standard deviation projections with false color in three orthogonal directions. Minimum values are shown in green, max in blue, and dark to light orange shades represent small to large values respectively.

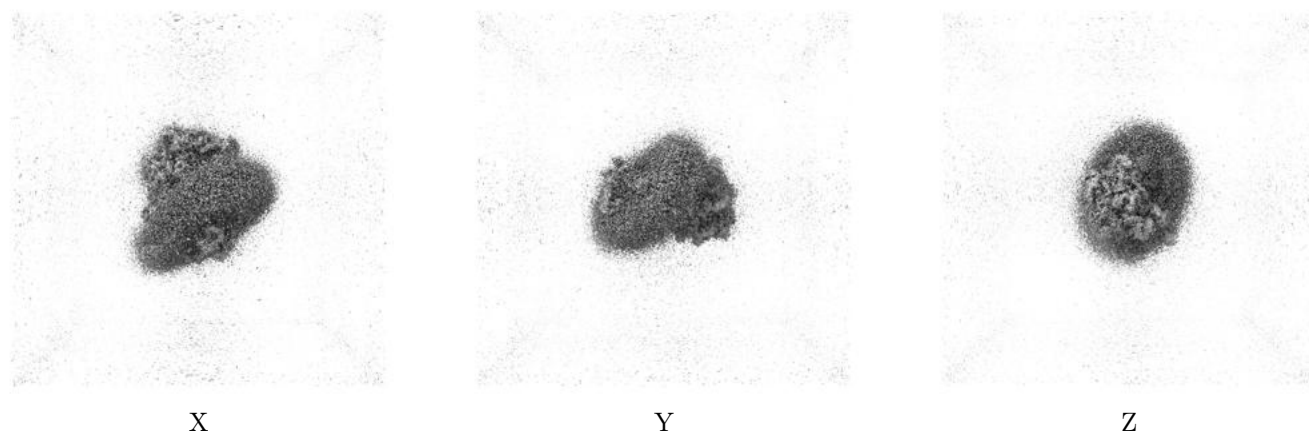
6.5 Orthogonal surface views [i](#)

6.5.1 Primary map



The images above show the 3D surface view of the map at the recommended contour level 0.073. These images, in conjunction with the slice images, may facilitate assessment of whether an appropriate contour level has been provided.

6.5.2 Raw map



These images show the 3D surface of the raw map. The raw map's contour level was selected so that its surface encloses the same volume as the primary map does at its recommended contour level.

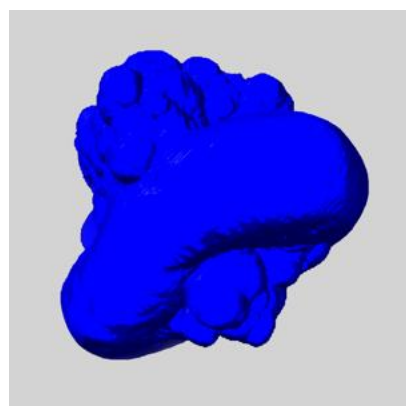
6.6 Mask visualisation [i](#)

This section shows the 3D surface view of the primary map at 50% transparency overlaid with the specified mask at 0% transparency

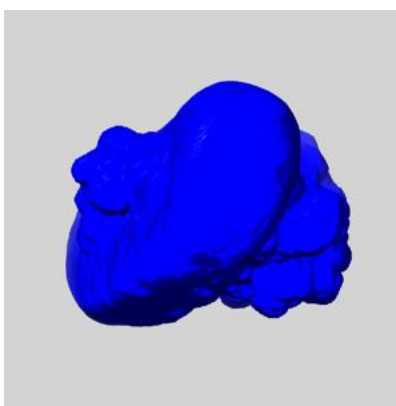
A mask typically either:

- Encompasses the whole structure
- Separates out a domain, a functional unit, a monomer or an area of interest from a larger structure

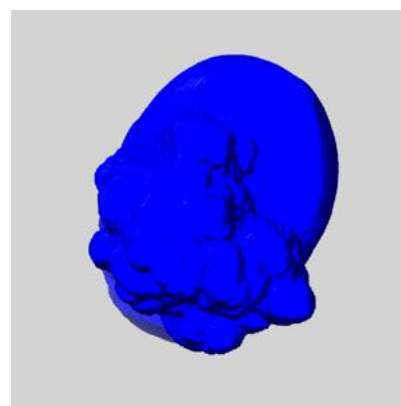
6.6.1 emd_71552_msk_1.map [i](#)



X



Y

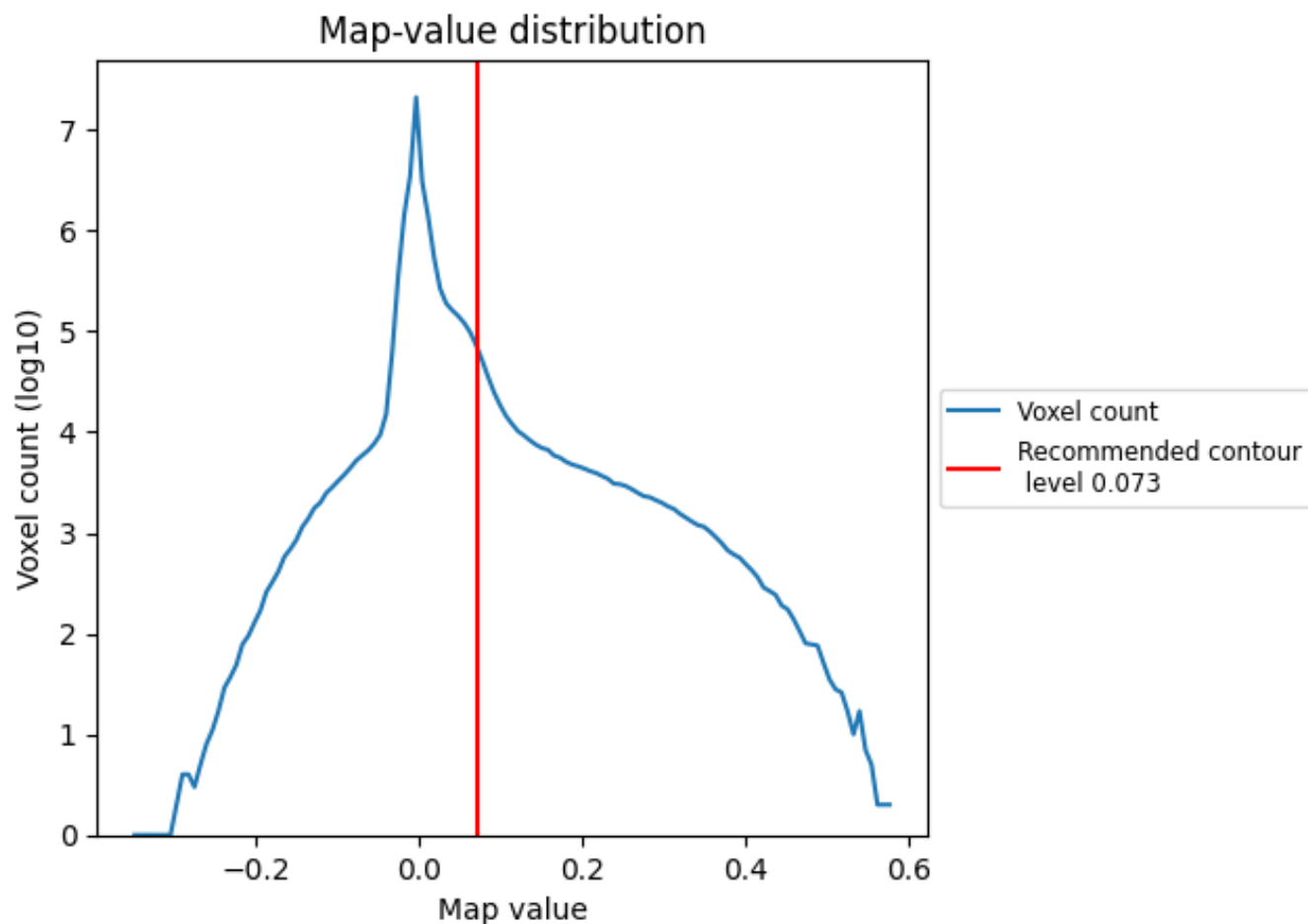


Z

7 Map analysis [i](#)

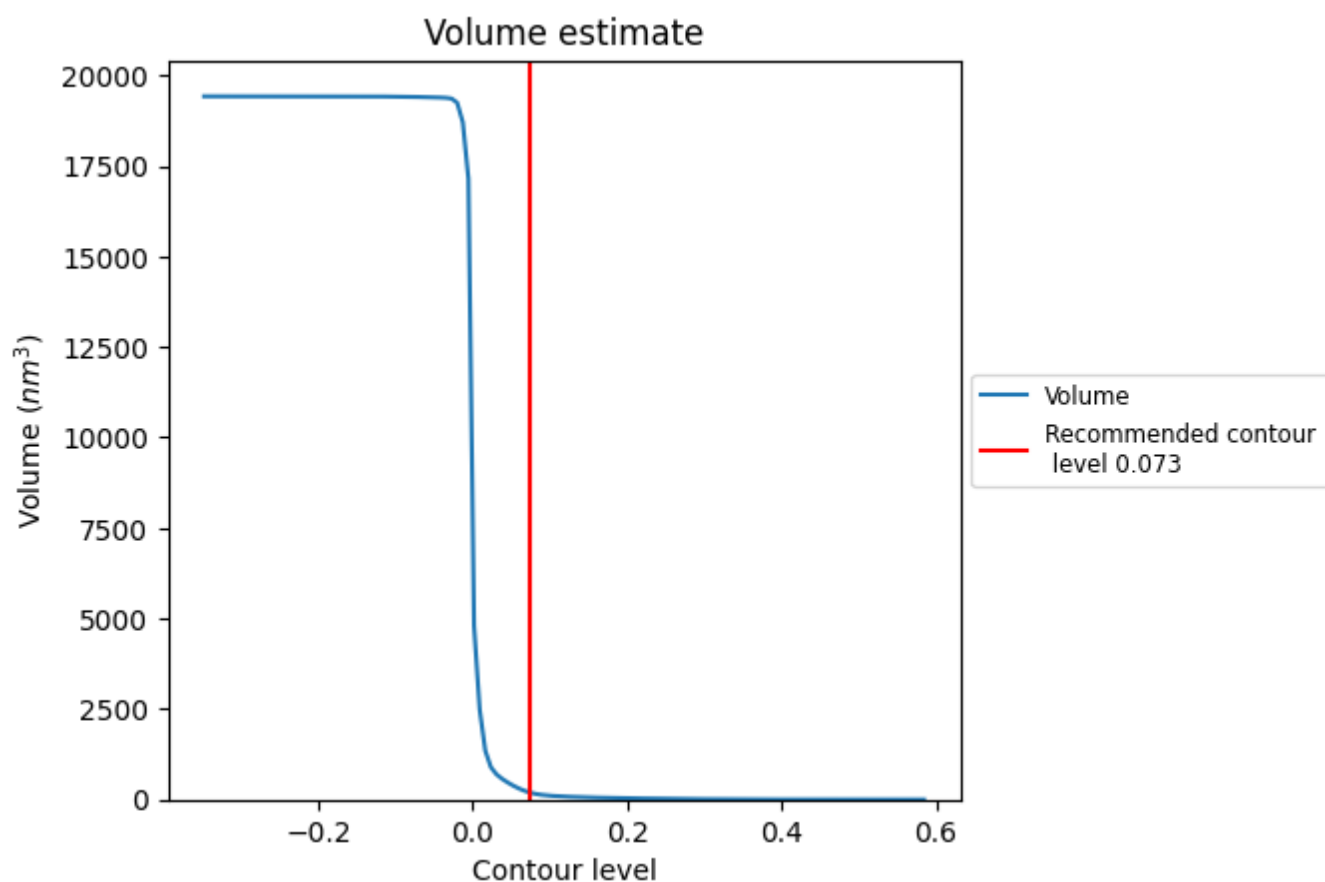
This section contains the results of statistical analysis of the map.

7.1 Map-value distribution [i](#)



The map-value distribution is plotted in 128 intervals along the x-axis. The y-axis is logarithmic. A spike in this graph at zero usually indicates that the volume has been masked.

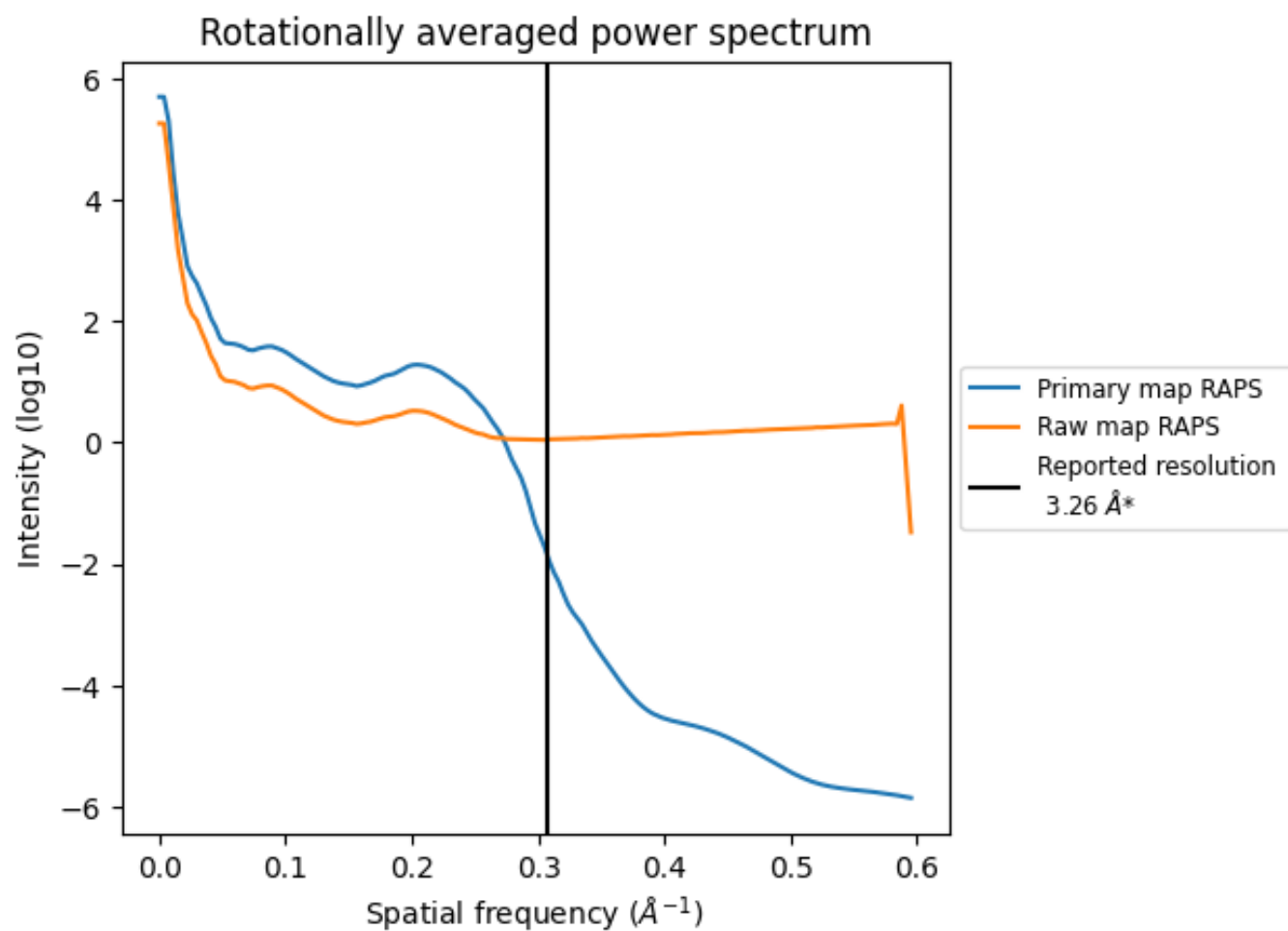
7.2 Volume estimate [i](#)



The volume at the recommended contour level is 200 nm³; this corresponds to an approximate mass of 181 kDa.

The volume estimate graph shows how the enclosed volume varies with the contour level. The recommended contour level is shown as a vertical line and the intersection between the line and the curve gives the volume of the enclosed surface at the given level.

7.3 Rotationally averaged power spectrum ⓘ

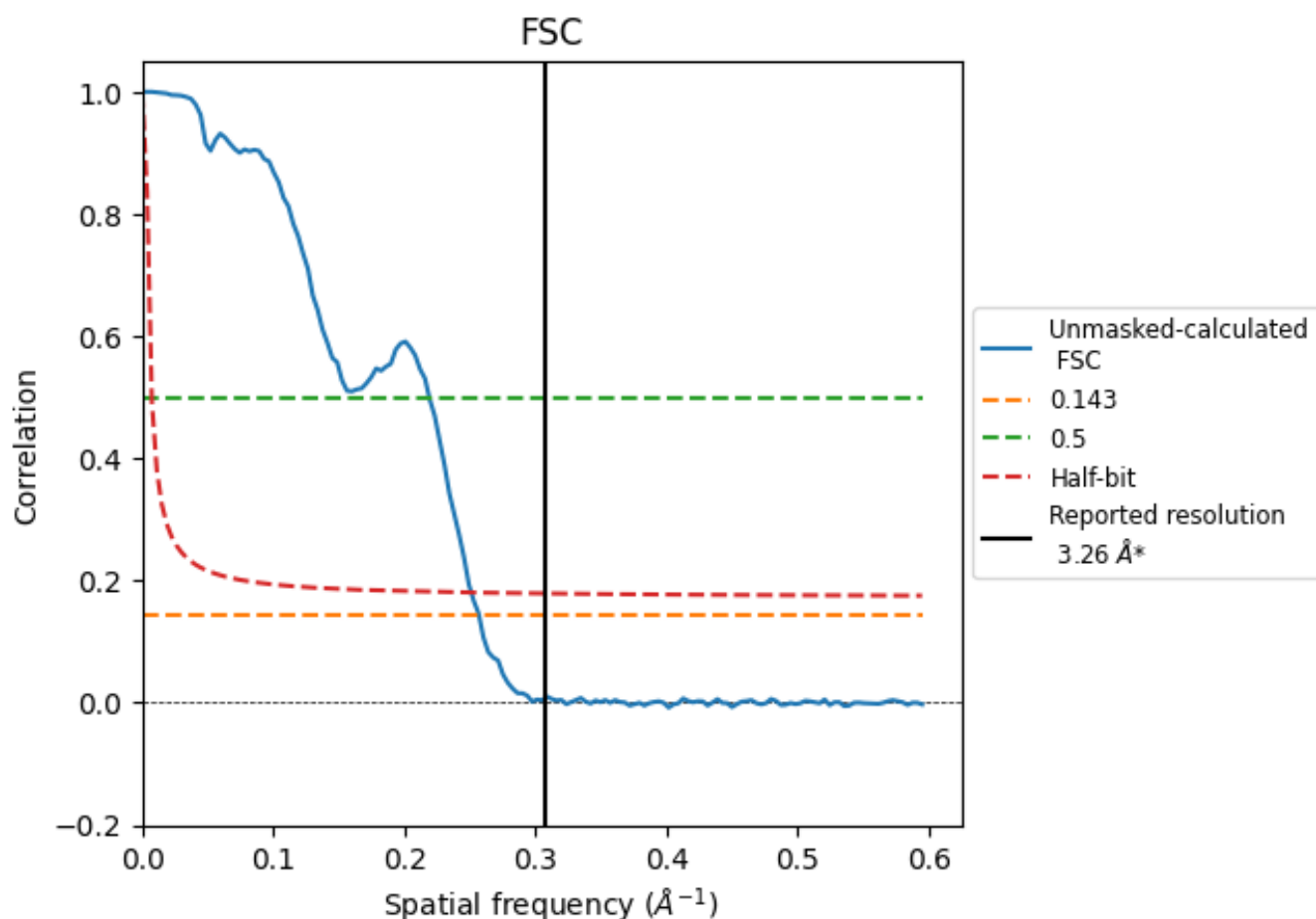


*Reported resolution corresponds to spatial frequency of 0.307 \AA^{-1}

8 Fourier-Shell correlation [i](#)

Fourier-Shell Correlation (FSC) is the most commonly used method to estimate the resolution of single-particle and subtomogram-averaged maps. The shape of the curve depends on the imposed symmetry, mask and whether or not the two 3D reconstructions used were processed from a common reference. The reported resolution is shown as a black line. A curve is displayed for the half-bit criterion in addition to lines showing the 0.143 gold standard cut-off and 0.5 cut-off.

8.1 FSC [i](#)



*Reported resolution corresponds to spatial frequency of 0.307 Å⁻¹

8.2 Resolution estimates [i](#)

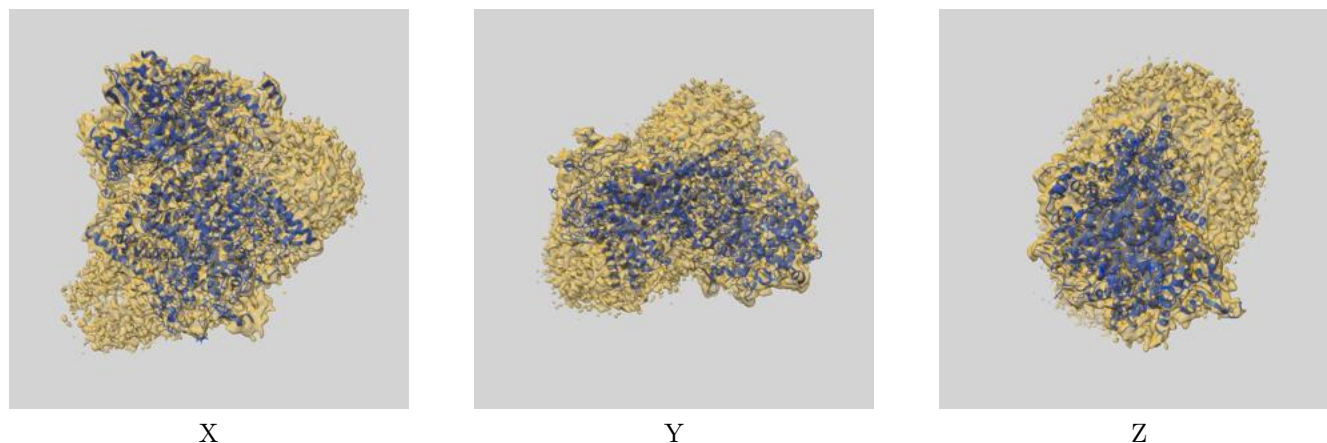
Resolution estimate (Å)	Estimation criterion (FSC cut-off)		
	0.143	0.5	Half-bit
Reported by author	3.26	-	-
Author-provided FSC curve	-	-	-
Unmasked-calculated*	3.89	4.57	3.98

*Resolution estimate based on FSC curve calculated by comparison of deposited half-maps. The value from deposited half-maps intersecting FSC 0.143 CUT-OFF 3.89 differs from the reported value 3.26 by more than 10 %

9 Map-model fit [i](#)

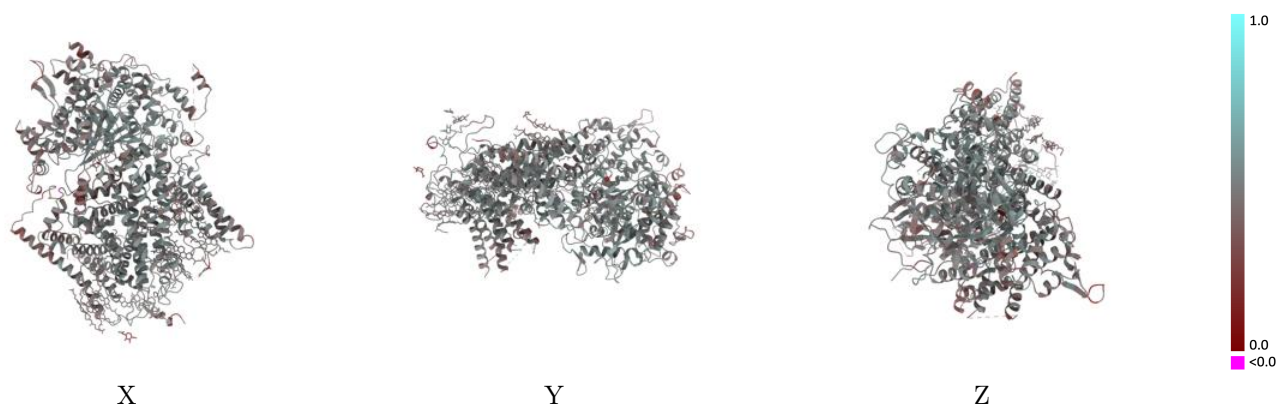
This section contains information regarding the fit between EMDB map EMD-71552 and PDB model 9PE3. Per-residue inclusion information can be found in section [3](#) on page [9](#).

9.1 Map-model overlay [i](#)



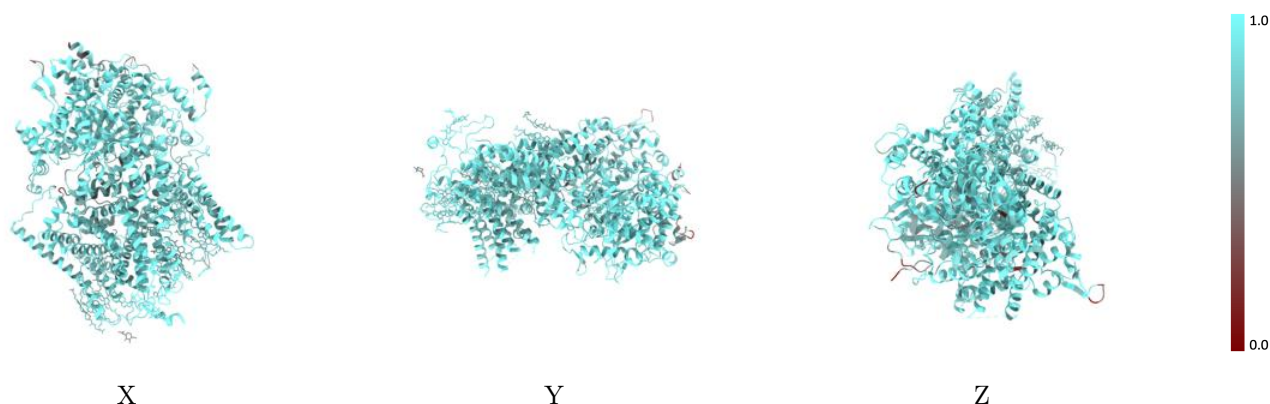
The images above show the 3D surface view of the map at the recommended contour level 0.073 at 50% transparency in yellow overlaid with a ribbon representation of the model coloured in blue. These images allow for the visual assessment of the quality of fit between the atomic model and the map.

9.2 Q-score mapped to coordinate model [i](#)



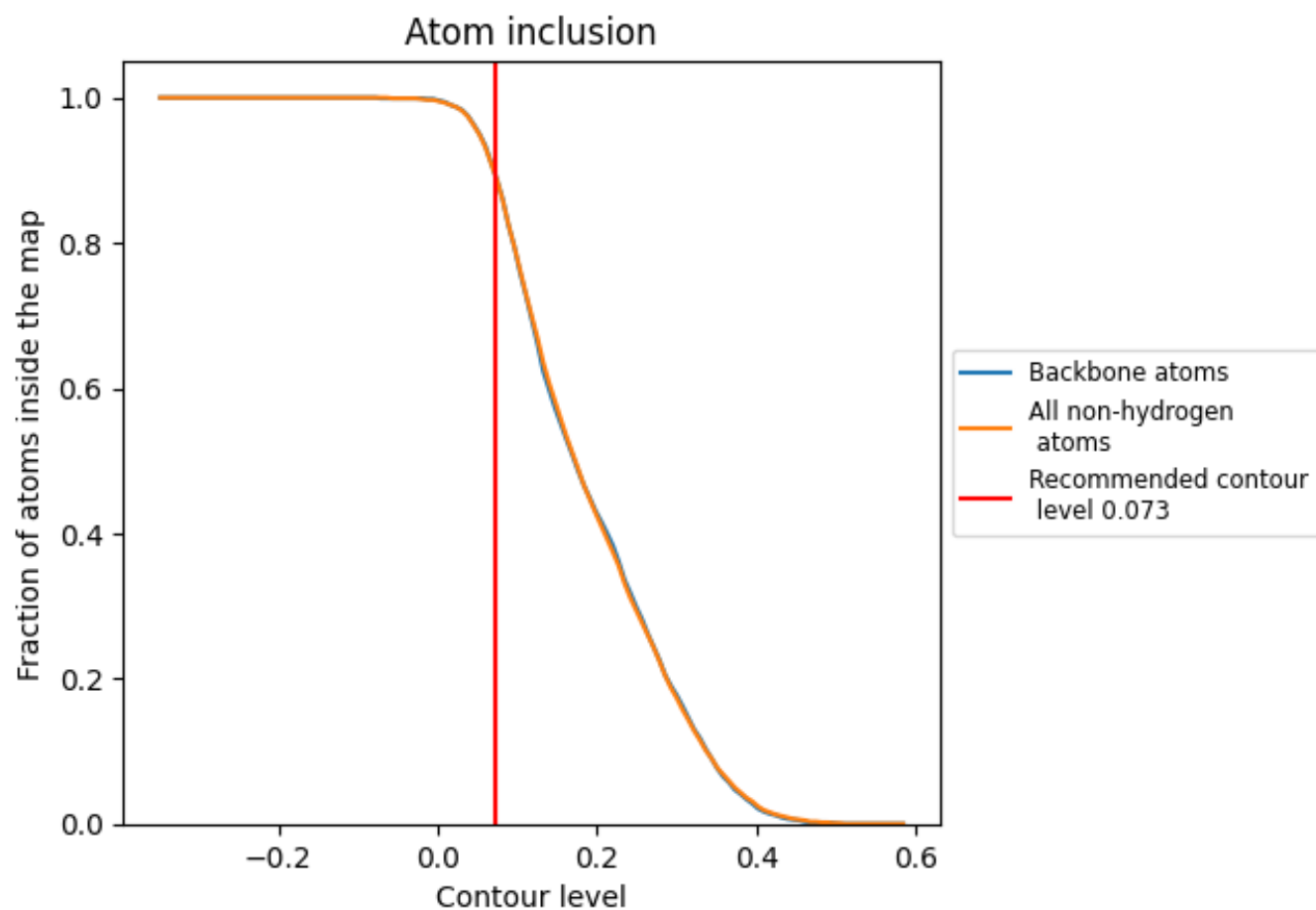
The images above show the model with each residue coloured according its Q-score. This shows their resolvability in the map with higher Q-score values reflecting better resolvability. Please note: Q-score is calculating the resolvability of atoms, and thus high values are only expected at resolutions at which atoms can be resolved. Low Q-score values may therefore be expected for many entries.

9.3 Atom inclusion mapped to coordinate model [i](#)



The images above show the model with each residue coloured according to its atom inclusion. This shows to what extent they are inside the map at the recommended contour level (0.073).

9.4 Atom inclusion [i](#)



At the recommended contour level, 89% of all backbone atoms, 89% of all non-hydrogen atoms, are inside the map.

9.5 Map-model fit summary ⓘ

The table lists the average atom inclusion at the recommended contour level (0.073) and Q-score for the entire model and for each chain.

Chain	Atom inclusion	Q-score
All	<div></div> 0.8920	<div></div> 0.4730
A	<div></div> 0.9020	<div></div> 0.4740
B	<div></div> 0.9340	<div></div> 0.4620
G	<div></div> 0.6560	<div></div> 0.4370

