



## Full wwPDB EM Validation Report ⓘ

Mar 26, 2026 – 01:50 PM UTC

PDB ID : 9OUN / pdb\_00009oun  
EMDB ID : EMD-70873  
Title : Native GABA-A receptor from rat cerebella, beta2-alpha1-beta2-alpha1-gamma2 subtype, in complex with GABA and PZ-II-029  
Authors : Sun, C.; Gouaux, E.  
Deposited on : 2025-05-29  
Resolution : 2.74 Å(reported)

This is a Full wwPDB EM Validation Report for a publicly released PDB entry.

We welcome your comments at [validation@mail.wwpdb.org](mailto:validation@mail.wwpdb.org)

A user guide is available at

<https://www.wwpdb.org/validation/2017/EMValidationReportHelp>  
with specific help available everywhere you see the ⓘ symbol.

The types of validation reports are described at

<http://www.wwpdb.org/validation/2017/FAQs#types>.

---

The following versions of software and data (see [references ⓘ](#)) were used in the production of this report:

EMDB validation analysis : 0.0.1.dev132  
Mogul : 2022.3.0, CSD as543be (2022)  
MolProbity : 4-5-2 with Phenix2.0  
Buster-report : wwPDB partial adaption of 1.1.7 (2018)  
Percentile statistics : 20250101.v01 (using entries in the PDB archive January 1st 2025)  
EM percentile statistics : 202505.v01 (Using data in the EMDB archive up until May 2025)  
MapQ : 1.9.13  
Ideal geometry (proteins) : Engh & Huber (2001)  
Ideal geometry (DNA, RNA) : Parkinson et al. (1996)  
Validation Pipeline (wwPDB-VP) : 2.49

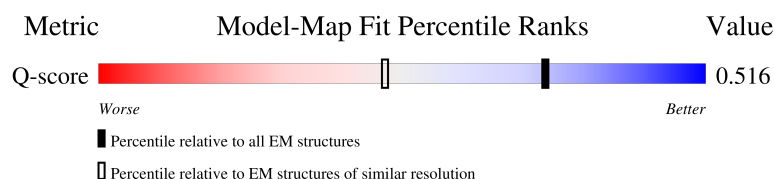
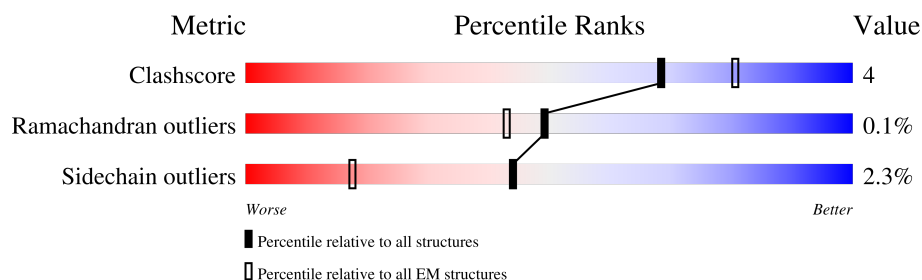
# 1 Overall quality at a glance i

The following experimental techniques were used to determine the structure:

*ELECTRON MICROSCOPY*

The reported resolution of this entry is 2.74 Å.

Percentile scores (ranging between 0-100) for global validation metrics of the entry are shown in the following graphic. The table shows the number of entries on which the scores are based.





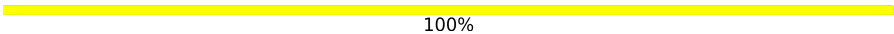
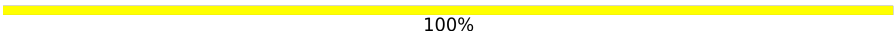

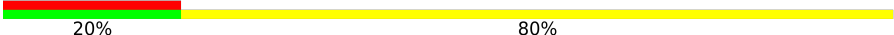
Metric	Whole archive (#Entries)	EM structures (#Entries)	Similar EM resolution (#Entries, resolution range(Å))
Clashscore	229148	23984	-
Ramachandran outliers	224038	23583	-
Sidechain outliers	223484	23102	-
Q-score	-	25397	10492 ( 2.24 - 3.24 )

The table below summarises the geometric issues observed across the polymeric chains and their fit to the map. The red, orange, yellow and green segments of the bar indicate the fraction of residues that contain outliers for  $\geq 3$ , 2, 1 and 0 types of geometric quality criteria respectively. A grey segment represents the fraction of residues that are not modelled. The numeric value for each fraction is indicated below the corresponding segment, with a dot representing fractions  $\leq 5\%$ . The upper red bar (where present) indicates the fraction of residues that have poor fit to the EM map (all-atom inclusion  $< 40\%$ ). The numeric value is given above the bar.

Mol	Chain	Length	Quality of chain
1	D	466	<div> <div>41%</div> <div>55%</div> </div>
2	H	223	<div> <div>46%</div> <div>7%</div> <div>48%</div> </div>
2	J	223	<div> <div>48%</div> <div>48%</div> </div>
3	K	213	<div> <div>44%</div> <div>5%</div> <div>51%</div> </div>

*Continued on next page...*

*Continued from previous page...*

Mol	Chain	Length	Quality of chain
3	L	213	 44%5%51%
4	A	455	 44%.53%
4	C	455	 42%.53%
5	B	474	 41%.55%
5	E	474	 39%5%55%
6	F	2	 100%
6	M	2	 100%
6	O	2	 50%50%
7	G	7	 43%57%
8	I	3	 67%33%
8	P	3	 33%67%
9	N	5	 20%20%80%

## 2 Entry composition [i](#)

There are 12 unique types of molecules in this entry. The entry contains 24438 atoms, of which 12055 are hydrogens and 0 are deuteriums.

In the tables below, the AltConf column contains the number of residues with at least one atom in alternate conformation and the Trace column contains the number of residues modelled with at most 2 atoms.

- Molecule 1 is a protein called Gamma-aminobutyric acid receptor subunit gamma-2.

Mol	Chain	Residues	Atoms						AltConf	Trace
1	D	208	Total	C	H	N	O	S	0	0
			3418	1105	1693	298	314	8		

- Molecule 2 is a protein called 8E3 Fab heavy chain.

Mol	Chain	Residues	Atoms						AltConf	Trace
2	H	117	Total	C	H	N	O	S	0	0
			1783	587	863	152	177	4		
2	J	117	Total	C	H	N	O	S	0	0
			1783	587	863	152	177	4		

- Molecule 3 is a protein called 8E3 Fab light chain.

Mol	Chain	Residues	Atoms						AltConf	Trace
3	L	105	Total	C	H	N	O	S	0	0
			1552	505	756	132	155	4		
3	K	105	Total	C	H	N	O	S	0	0
			1552	505	756	132	155	4		

- Molecule 4 is a protein called Gamma-aminobutyric acid receptor subunit alpha-1.

Mol	Chain	Residues	Atoms						AltConf	Trace
4	A	213	Total	C	H	N	O	S	0	0
			3425	1094	1698	301	321	11		
4	C	212	Total	C	H	N	O	S	0	0
			3414	1090	1695	300	318	11		

- Molecule 5 is a protein called Gamma-aminobutyric acid receptor subunit beta-2.

Mol	Chain	Residues	Atoms						AltConf	Trace
5	B	211	Total	C	H	N	O	S	0	0
			3421	1093	1710	288	320	10		

*Continued on next page...*

Continued from previous page...

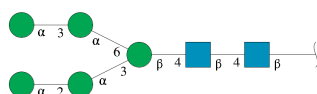
Mol	Chain	Residues	Atoms					AltConf	Trace
5	E	211	Total	C	H	N	O	S	
			3421	1093	1710	288	320	10	
								0	0

- Molecule 6 is an oligosaccharide called 2-acetamido-2-deoxy-beta-D-glucopyranose-(1-4)-2-acetamido-2-deoxy-beta-D-glucopyranose.



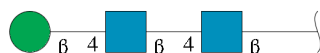
Mol	Chain	Residues	Atoms					AltConf	Trace
6	F	2	Total	C	H	N	O		
			53	16	25	2	10	0	0
6	M	2	Total	C	H	N	O		
			53	16	25	2	10	0	0
6	O	2	Total	C	H	N	O		
			53	16	25	2	10	0	0

- Molecule 7 is an oligosaccharide called alpha-D-mannopyranose-(1-2)-alpha-D-mannopyranose-(1-3)-[alpha-D-mannopyranose-(1-3)-alpha-D-mannopyranose-(1-6)]beta-D-mannopyranose-(1-4)-2-acetamido-2-deoxy-beta-D-glucopyranose-(1-4)-2-acetamido-2-deoxy-beta-D-glucopyranose.



Mol	Chain	Residues	Atoms					AltConf	Trace
7	G	7	Total	C	H	N	O		
			153	46	70	2	35	0	0

- Molecule 8 is an oligosaccharide called beta-D-mannopyranose-(1-4)-2-acetamido-2-deoxy-beta-D-glucopyranose-(1-4)-2-acetamido-2-deoxy-beta-D-glucopyranose.



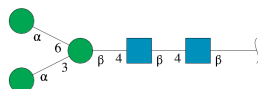
Mol	Chain	Residues	Atoms					AltConf	Trace
8	I	3	Total	C	H	N	O		
			73	22	34	2	15	0	0

Continued on next page...

Continued from previous page...

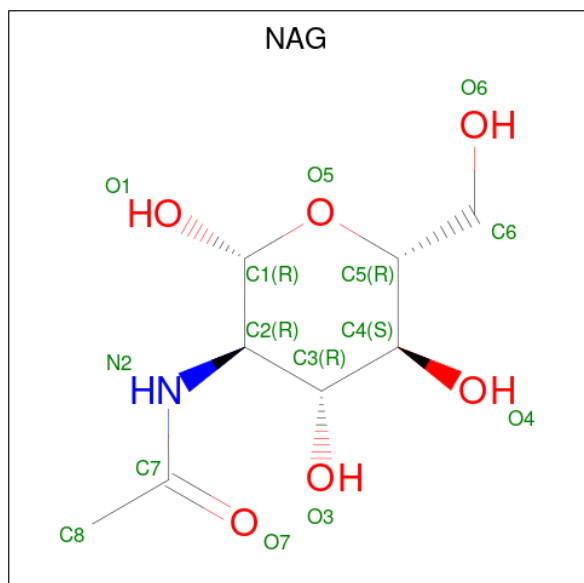
Mol	Chain	Residues	Atoms					AltConf	Trace
8	P	3	Total	C	H	N	O	0	0
			73	22	34	2	15		

- Molecule 9 is an oligosaccharide called alpha-D-mannopyranose-(1-3)-[alpha-D-mannopyranose-(1-6)]beta-D-mannopyranose-(1-4)-2-acetamido-2-deoxy-beta-D-glucopyranose-(1-4)-2-acetamido-2-deoxy-beta-D-glucopyranose.



Mol	Chain	Residues	Atoms					AltConf	Trace
9	N	5	Total	C	H	N	O	0	0
			113	34	52	2	25		

- Molecule 10 is 2-acetamido-2-deoxy-beta-D-glucopyranose (CCD ID: NAG) (formula: C<sub>8</sub>H<sub>15</sub>NO<sub>6</sub>).



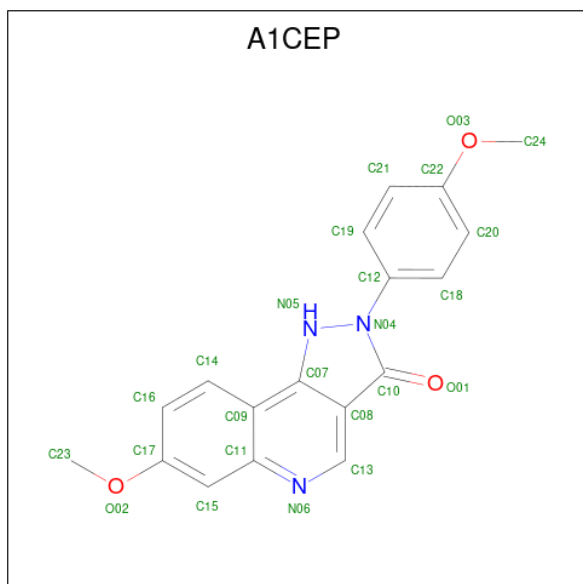
Mol	Chain	Residues	Atoms					AltConf
10	D	1	Total	C	H	N	O	0
			27	8	13	1	5	

- Molecule 11 is GAMMA-AMINO-BUTANOIC ACID (CCD ID: ABU) (formula: C<sub>4</sub>H<sub>9</sub>NO<sub>2</sub>) (labeled as "Ligand of Interest" by depositor).



Mol	Chain	Residues	Atoms					AltConf
11	A	1	Total	C	H	N	O	0
			16	4	9	1	2	
11	B	1	Total	C	H	N	O	0
			16	4	9	1	2	

- Molecule 12 is 7-methoxy-2-(4-methoxyphenyl)-1,2-dihydro-3H-pyrazolo[4,3-c]quinolin-3-one (CCD ID: A1CEP) (formula: C<sub>18</sub>H<sub>15</sub>N<sub>3</sub>O<sub>3</sub>) (labeled as "Ligand of Interest" by depositor).

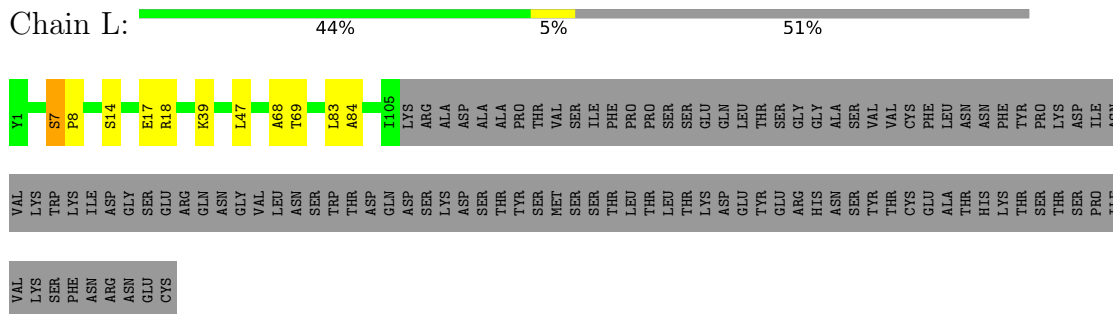


Mol	Chain	Residues	Atoms					AltConf
12	C	1	Total	C	H	N	O	0
			39	18	15	3	3	

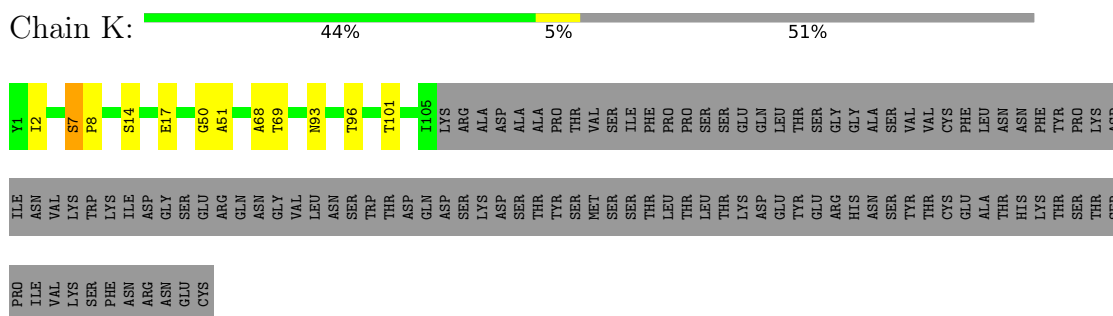




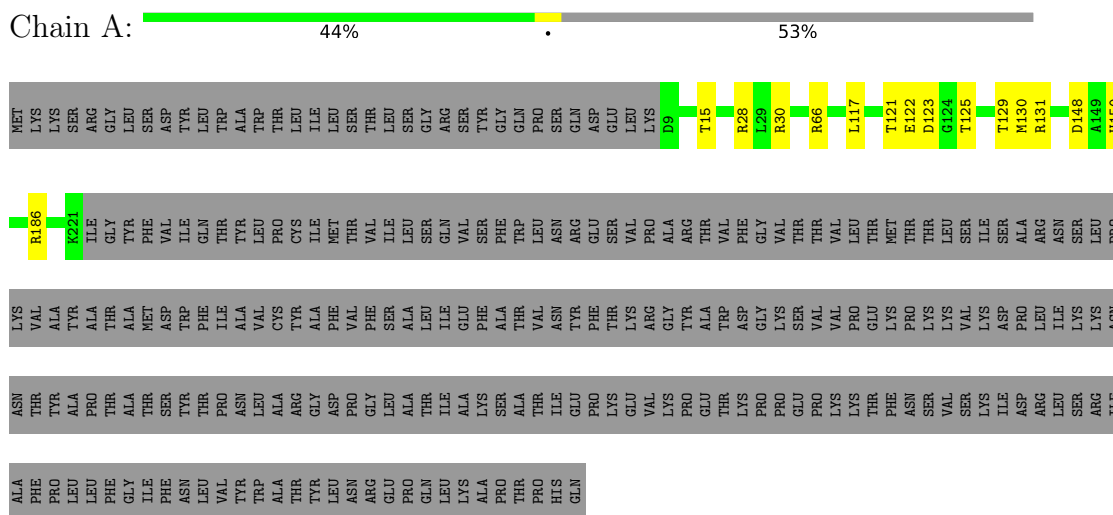
- Molecule 3: 8E3 Fab light chain



- Molecule 3: 8E3 Fab light chain

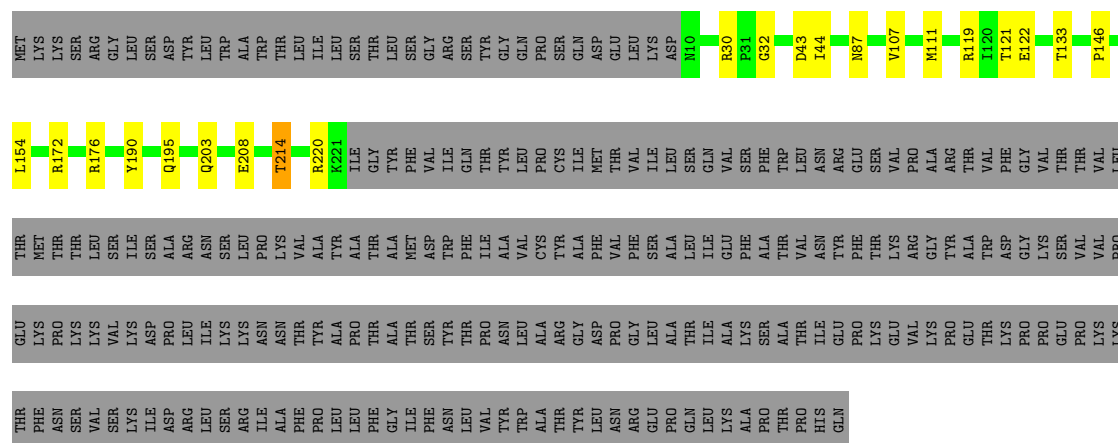


- Molecule 4: Gamma-aminobutyric acid receptor subunit alpha-1



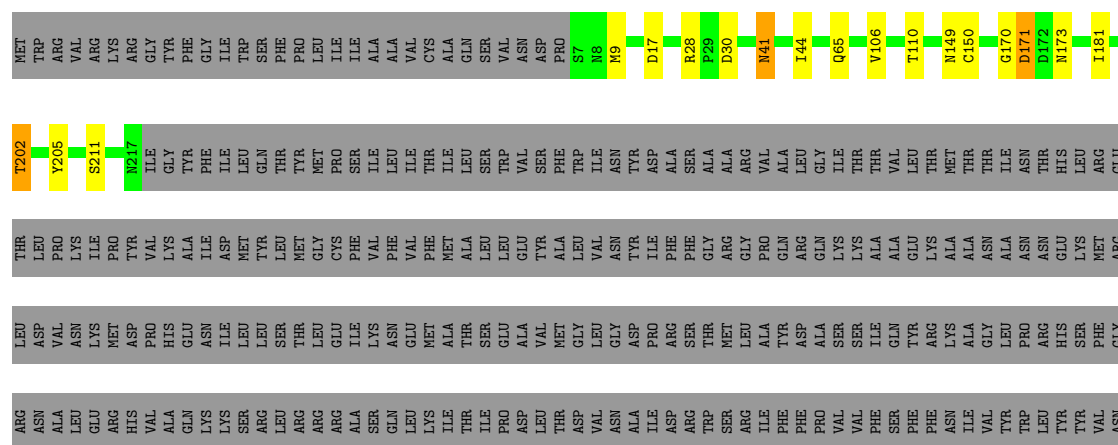
- Molecule 4: Gamma-aminobutyric acid receptor subunit alpha-1





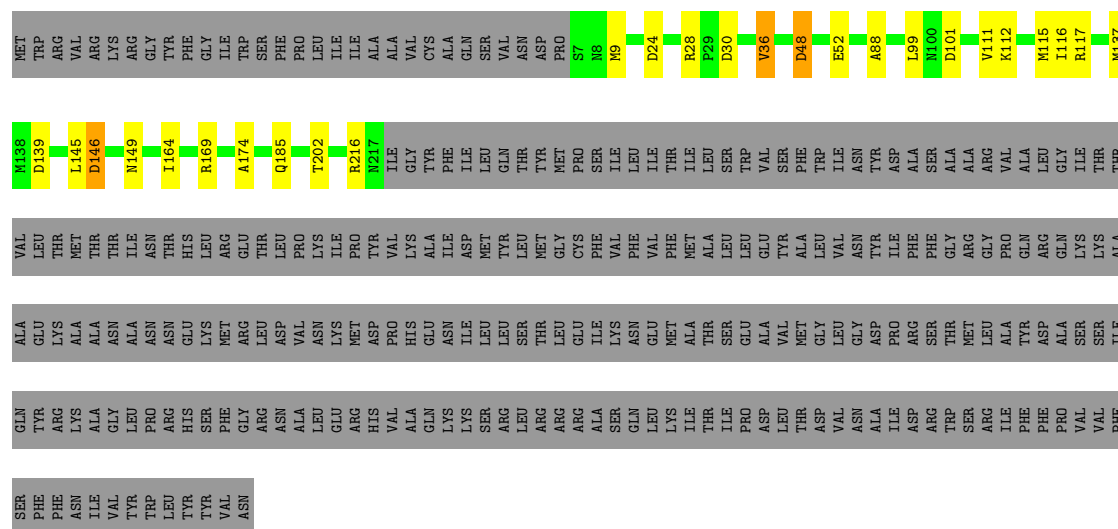
• Molecule 5: Gamma-aminobutyric acid receptor subunit beta-2

Chain B: 41% 55%



• Molecule 5: Gamma-aminobutyric acid receptor subunit beta-2

Chain E: 39% 5% 55%



- Molecule 6: 2-acetamido-2-deoxy-beta-D-glucopyranose-(1-4)-2-acetamido-2-deoxy-beta-D-glucopyranose

Chain F:  100%

MAG1  
MAG2

- Molecule 6: 2-acetamido-2-deoxy-beta-D-glucopyranose-(1-4)-2-acetamido-2-deoxy-beta-D-glucopyranose

Chain M:  100%

MAG1  
MAG2

- Molecule 6: 2-acetamido-2-deoxy-beta-D-glucopyranose-(1-4)-2-acetamido-2-deoxy-beta-D-glucopyranose

Chain O:  50% 50%

MAG1  
MAG2

- Molecule 7: alpha-D-mannopyranose-(1-2)-alpha-D-mannopyranose-(1-3)-[alpha-D-mannopyranose-(1-3)-alpha-D-mannopyranose-(1-6)]beta-D-mannopyranose-(1-4)-2-acetamido-2-deoxy-beta-D-glucopyranose-(1-4)-2-acetamido-2-deoxy-beta-D-glucopyranose

Chain G:  43% 57%

MAG1  
MAG2  
BNA3  
MAN4  
MAN5  
MAN6  
MAN7

- Molecule 8: beta-D-mannopyranose-(1-4)-2-acetamido-2-deoxy-beta-D-glucopyranose-(1-4)-2-acetamido-2-deoxy-beta-D-glucopyranose

Chain I:  67% 33%

MAG1  
MAG2  
BNA3

- Molecule 8: beta-D-mannopyranose-(1-4)-2-acetamido-2-deoxy-beta-D-glucopyranose-(1-4)-2-acetamido-2-deoxy-beta-D-glucopyranose

Chain P:  33% 67%

MAG1  
MAG2  
BNA3

- Molecule 9: alpha-D-mannopyranose-(1-3)-[alpha-D-mannopyranose-(1-6)]beta-D-mannopyranose-(1-4)-2-acetamido-2-deoxy-beta-D-glucopyranose-(1-4)-2-acetamido-2-deoxy-beta-D-glucopyranose



## 4 Experimental information

Property	Value	Source
EM reconstruction method	SINGLE PARTICLE	Depositor
Imposed symmetry	POINT, Not provided	
Number of particles used	159009	Depositor
Resolution determination method	FSC 0.143 CUT-OFF	Depositor
CTF correction method	PHASE FLIPPING AND AMPLITUDE CORRECTION	Depositor
Microscope	TFS KRIOS	Depositor
Voltage (kV)	300	Depositor
Electron dose ( $e^-/\text{\AA}^2$ )	45	Depositor
Minimum defocus (nm)	1200	Depositor
Maximum defocus (nm)	2500	Depositor
Magnification	Not provided	
Image detector	FEI FALCON IV (4k x 4k)	Depositor
Maximum map value	0.877	Depositor
Minimum map value	-0.438	Depositor
Average map value	0.001	Depositor
Map value standard deviation	0.018	Depositor
Recommended contour level	0.1	Depositor
Map size (Å)	344.16, 344.16, 344.16	wwPDB
Map dimensions	360, 360, 360	wwPDB
Map angles (°)	90.0, 90.0, 90.0	wwPDB
Pixel spacing (Å)	0.95600003, 0.95600003, 0.95600003	Depositor

## 5 Model quality

### 5.1 Standard geometry

Bond lengths and bond angles in the following residue types are not validated in this section: ABU, BMA, MAN, NAG, A1CEP

The Z score for a bond length (or angle) is the number of standard deviations the observed value is removed from the expected value. A bond length (or angle) with  $|Z| > 5$  is considered an outlier worth inspection. RMSZ is the root-mean-square of all Z scores of the bond lengths (or angles).

Mol	Chain	Bond lengths		Bond angles	
		RMSZ	# Z  >5	RMSZ	# Z  >5
1	D	0.16	0/1769	0.31	0/2403
2	H	0.15	0/946	0.33	0/1284
2	J	0.15	0/946	0.34	0/1284
3	K	0.15	0/815	0.34	0/1108
3	L	0.14	0/815	0.36	0/1108
4	A	0.15	0/1767	0.30	0/2393
4	C	0.16	0/1759	0.30	0/2382
5	B	0.16	0/1747	0.34	0/2370
5	E	0.16	0/1747	0.34	0/2370
All	All	0.16	0/12311	0.32	0/16702

Chiral center outliers are detected by calculating the chiral volume of a chiral center and verifying if the center is modelled as a planar moiety or with the opposite hand. A planarity outlier is detected by checking planarity of atoms in a peptide group, atoms in a mainchain group or atoms of a sidechain that are expected to be planar.

Mol	Chain	#Chirality outliers	#Planarity outliers
3	L	0	1

There are no bond length outliers.

There are no bond angle outliers.

There are no chirality outliers.

All (1) planarity outliers are listed below:

Mol	Chain	Res	Type	Group
3	L	7	SER	Peptide

## 5.2 Too-close contacts ⓘ

In the following table, the Non-H and H(model) columns list the number of non-hydrogen atoms and hydrogen atoms in the chain respectively. The H(added) column lists the number of hydrogen atoms added and optimized by MolProbity. The Clashes column lists the number of clashes within the asymmetric unit, whereas Symm-Clashes lists symmetry-related clashes.

Mol	Chain	Non-H	H(model)	H(added)	Clashes	Symm-Clashes
1	D	1725	1693	1693	10	0
2	H	920	863	863	8	0
2	J	920	863	863	6	0
3	K	796	756	756	7	0
3	L	796	756	756	7	0
4	A	1727	1698	1698	11	0
4	C	1719	1695	1694	12	0
5	B	1711	1710	1709	14	0
5	E	1711	1710	1709	19	0
6	F	28	25	25	2	0
6	M	28	25	25	0	0
6	O	28	25	25	0	0
7	G	83	70	70	4	0
8	I	39	34	34	2	0
8	P	39	34	34	2	0
9	N	61	52	52	0	0
10	D	14	13	13	0	0
11	A	7	9	0	2	0
11	B	7	9	0	1	0
12	C	24	15	0	2	0
All	All	12383	12055	12019	90	0

The all-atom clashscore is defined as the number of clashes found per 1000 atoms (including hydrogen atoms). The all-atom clashscore for this structure is 4.

All (90) close contacts within the same asymmetric unit are listed below, sorted by their clash magnitude.

Atom-1	Atom-2	Interatomic distance (Å)	Clash overlap (Å)
12:C:501:A1CEP:C12	12:C:501:A1CEP:N04	1.68	1.51
3:L:14:SER:OG	3:L:17:GLU:OE2	1.94	0.84
5:B:202:THR:OG1	11:B:501:ABU:OXT	1.97	0.81
5:E:48:ASP:N	5:E:48:ASP:OD1	2.18	0.75
2:J:94:ARG:NH2	2:J:101:ASP:OD2	2.22	0.72
3:L:83:LEU:HD12	3:L:83:LEU:O	1.90	0.72
7:G:2:NAG:O3	7:G:6:MAN:O4	2.08	0.71

*Continued on next page...*

*Continued from previous page...*

Atom-1	Atom-2	Interatomic distance (Å)	Clash overlap (Å)
2:H:54:ASN:ND2	2:H:56:ASP:OD2	2.24	0.70
4:A:30:ARG:O	5:B:9:MET:HE1	1.91	0.70
1:D:142:THR:HG21	12:C:501:A1CEP:O01	1.94	0.68
4:C:190:TYR:OH	4:C:220:ARG:NH2	2.28	0.68
2:J:48:ILE:HD13	2:J:80:MET:HE1	1.78	0.65
3:L:68:ALA:O	3:L:69:THR:OG1	2.11	0.65
4:C:176:ARG:NH1	3:K:93:ASN:OD1	2.30	0.64
8:P:2:NAG:O3	8:P:3:BMA:O5	2.10	0.64
3:K:2:ILE:O	3:K:96:THR:HG21	1.98	0.62
4:A:123:ASP:OD1	4:A:125:THR:OG1	2.14	0.61
4:A:15:THR:OG1	5:E:24:ASP:OD2	2.13	0.60
4:A:129:THR:HG21	11:A:501:ABU:O	2.00	0.60
5:E:146:ASP:N	5:E:146:ASP:OD1	2.36	0.59
1:D:185:ARG:NH2	6:F:2:NAG:O6	2.35	0.58
2:J:48:ILE:HD13	2:J:80:MET:CE	2.34	0.58
5:B:149:ASN:OD1	5:B:150:CYS:N	2.36	0.58
11:A:501:ABU:OXT	5:E:202:THR:OG1	2.16	0.58
4:A:131:ARG:NH2	5:E:101:ASP:OD1	2.39	0.56
3:K:14:SER:OG	3:K:17:GLU:OE2	2.23	0.56
5:B:106:VAL:HG23	4:C:111:MET:HE1	1.88	0.56
7:G:2:NAG:H83	7:G:2:NAG:H3	1.87	0.55
1:D:185:ARG:NH2	6:F:2:NAG:O5	2.41	0.54
3:K:68:ALA:O	3:K:69:THR:OG1	2.19	0.54
5:B:44:ILE:HG22	5:B:181:ILE:HD11	1.90	0.53
5:B:41:ASN:N	5:B:41:ASN:OD1	2.42	0.52
3:L:39:LYS:HG2	3:L:84:ALA:HB2	1.93	0.50
4:C:43:ASP:OD1	4:C:44:ILE:N	2.45	0.50
2:H:59:TYR:HE1	2:H:69:LEU:HD13	1.76	0.50
4:A:186:ARG:HG2	5:E:137:MET:HE3	1.94	0.49
5:E:52:GLU:OE2	5:E:216:ARG:NH1	2.45	0.49
3:K:8:PRO:O	3:K:101:THR:OG1	2.16	0.49
5:E:88:ALA:HB2	5:E:116:ILE:HD11	1.95	0.49
4:A:28:ARG:NH2	5:B:17:ASP:OD1	2.46	0.48
2:J:16:THR:HG22	2:J:17:SER:N	2.28	0.48
4:A:130:MET:HE1	5:B:110:THR:HB	1.96	0.48
5:E:169:ARG:O	5:E:174:ALA:HB2	2.13	0.47
2:H:16:THR:HG22	2:H:17:SER:H	1.78	0.47
5:E:28:ARG:NH1	5:E:30:ASP:O	2.47	0.47
8:I:2:NAG:C1	8:I:2:NAG:H82	2.45	0.47
8:P:2:NAG:H83	8:P:2:NAG:H3	1.96	0.47
5:B:205:TYR:OH	4:C:119:ARG:NH2	2.48	0.46

*Continued on next page...*



*Continued from previous page...*

Atom-1	Atom-2	Interatomic distance (Å)	Clash overlap (Å)
3:L:7:SER:O	3:L:8:PRO:C	2.58	0.46
1:D:190:VAL:HG13	1:D:196:TRP:CZ2	2.50	0.46
7:G:6:MAN:O3	7:G:7:MAN:O4	2.28	0.46
4:C:43:ASP:OD2	4:C:172:ARG:NH2	2.49	0.45
5:B:149:ASN:OD1	5:B:149:ASN:C	2.59	0.45
4:C:121:THR:HG22	4:C:122:GLU:N	2.30	0.45
5:E:137:MET:HA	5:E:137:MET:HE2	1.99	0.45
5:E:36:VAL:CG2	5:E:164:ILE:HD13	2.47	0.45
5:E:36:VAL:HG22	5:E:164:ILE:HD13	1.99	0.44
5:E:111:VAL:HG22	5:E:112:LYS:H	1.82	0.44
1:D:106:ILE:HG22	1:D:107:TRP:N	2.32	0.44
3:K:7:SER:HB3	3:K:8:PRO:HD3	1.98	0.44
2:H:18:VAL:HG11	2:H:109:LEU:HD12	2.00	0.44
4:A:148:ASP:OD2	4:A:150:HIS:NE2	2.50	0.44
3:K:50:GLY:O	3:K:51:ALA:HB3	2.17	0.44
2:H:13:LYS:NZ	2:H:112:SER:OG	2.44	0.44
5:B:170:GLY:O	5:B:173:ASN:N	2.50	0.44
1:D:46:ILE:HG22	5:E:9:MET:CE	2.49	0.43
7:G:3:BMA:O6	7:G:6:MAN:O4	2.35	0.43
2:J:83:THR:O	2:J:111:VAL:HG21	2.18	0.43
4:C:203:GLN:NE2	4:C:208:GLU:OE2	2.52	0.43
3:L:7:SER:CB	3:L:8:PRO:CD	2.97	0.43
3:L:7:SER:HB2	3:L:8:PRO:HD3	2.01	0.42
2:J:111:VAL:HG23	2:J:111:VAL:O	2.18	0.42
4:C:154:LEU:HB3	4:C:214:THR:HG23	2.01	0.42
4:A:66:ARG:HG2	4:A:129:THR:HG23	2.01	0.42
5:E:149:ASN:OD1	5:E:149:ASN:C	2.62	0.42
5:B:28:ARG:NH1	5:B:30:ASP:O	2.53	0.42
2:H:59:TYR:CE1	2:H:69:LEU:HD13	2.53	0.41
1:D:217:SER:OG	5:E:117:ARG:NH2	2.53	0.41
4:A:121:THR:HG22	4:A:122:GLU:N	2.35	0.41
1:D:26:ASP:O	1:D:29:VAL:HG22	2.21	0.41
4:C:107:VAL:HG22	4:C:133:THR:HB	2.03	0.41
8:I:2:NAG:C1	8:I:2:NAG:C8	2.98	0.41
5:B:44:ILE:CG2	5:B:181:ILE:HD11	2.50	0.41
4:C:146:PRO:O	4:C:220:ARG:HD2	2.20	0.41
2:H:70:THR:HG22	2:H:71:VAL:N	2.36	0.41
2:H:109:LEU:C	2:H:109:LEU:HD23	2.45	0.41
5:B:170:GLY:O	5:B:171:ASP:C	2.64	0.41
1:D:46:ILE:HG22	5:E:9:MET:HE3	2.03	0.40
1:D:217:SER:OG	5:E:117:ARG:NH1	2.54	0.40

*Continued on next page...*

Continued from previous page...

Atom-1	Atom-2	Interatomic distance (Å)	Clash overlap (Å)
4:C:30:ARG:NH1	4:C:32:GLY:O	2.55	0.40

There are no symmetry-related clashes.

## 5.3 Torsion angles [i](#)

### 5.3.1 Protein backbone [i](#)

In the following table, the Percentiles column shows the percent Ramachandran outliers of the chain as a percentile score with respect to all PDB entries followed by that with respect to all EM entries.

The Analysed column shows the number of residues for which the backbone conformation was analysed, and the total number of residues.

Mol	Chain	Analysed	Favoured	Allowed	Outliers	Percentiles	
1	D	206/466 (44%)	195 (95%)	11 (5%)	0	100	100
2	H	115/223 (52%)	107 (93%)	8 (7%)	0	100	100
2	J	115/223 (52%)	111 (96%)	4 (4%)	0	100	100
3	K	103/213 (48%)	91 (88%)	12 (12%)	0	100	100
3	L	103/213 (48%)	93 (90%)	10 (10%)	0	100	100
4	A	211/455 (46%)	207 (98%)	4 (2%)	0	100	100
4	C	210/455 (46%)	199 (95%)	11 (5%)	0	100	100
5	B	209/474 (44%)	203 (97%)	5 (2%)	1 (0%)	24	40
5	E	209/474 (44%)	202 (97%)	7 (3%)	0	100	100
All	All	1481/3196 (46%)	1408 (95%)	72 (5%)	1 (0%)	49	69

All (1) Ramachandran outliers are listed below:

Mol	Chain	Res	Type
5	B	171	ASP

### 5.3.2 Protein sidechains [i](#)

In the following table, the Percentiles column shows the percent sidechain outliers of the chain as a percentile score with respect to all PDB entries followed by that with respect to all EM entries.

The Analysed column shows the number of residues for which the sidechain conformation was analysed, and the total number of residues.

Mol	Chain	Analysed	Rotameric	Outliers	Percentiles	
1	D	193/428 (45%)	186 (96%)	7 (4%)	31	53
2	H	98/195 (50%)	95 (97%)	3 (3%)	35	57
2	J	98/195 (50%)	97 (99%)	1 (1%)	68	80
3	K	83/188 (44%)	82 (99%)	1 (1%)	63	77
3	L	83/188 (44%)	81 (98%)	2 (2%)	43	63
4	A	192/404 (48%)	191 (100%)	1 (0%)	81	88
4	C	191/404 (47%)	188 (98%)	3 (2%)	55	72
5	B	193/421 (46%)	189 (98%)	4 (2%)	47	66
5	E	193/421 (46%)	185 (96%)	8 (4%)	27	48
All	All	1324/2844 (47%)	1294 (98%)	30 (2%)	44	65

All (30) residues with a non-rotameric sidechain are listed below:

Mol	Chain	Res	Type
1	D	57	MET
1	D	69	ASN
1	D	85	ARG
1	D	120	ASP
1	D	130	MET
1	D	180	VAL
1	D	206	LEU
2	H	41	HIS
2	H	94	ARG
2	H	105	GLN
2	J	61	ARG
3	L	18	ARG
3	L	47	LEU
4	A	117	LEU
5	B	41	ASN
5	B	65	GLN
5	B	202	THR
5	B	211	SER
4	C	87	ASN
4	C	195	GLN
4	C	214	THR
5	E	36	VAL
5	E	48	ASP

*Continued on next page...*

*Continued from previous page...*

Mol	Chain	Res	Type
5	E	99	LEU
5	E	115	MET
5	E	139	ASP
5	E	145	LEU
5	E	146	ASP
5	E	185	GLN
3	K	7	SER

Sometimes sidechains can be flipped to improve hydrogen bonding and reduce clashes. All (6) such sidechains are listed below:

Mol	Chain	Res	Type
2	H	98	ASN
2	H	105	GLN
4	A	188	ASN
4	C	87	ASN
5	E	8	ASN
5	E	217	ASN

### 5.3.3 RNA ⓘ

There are no RNA molecules in this entry.

## 5.4 Non-standard residues in protein, DNA, RNA chains ⓘ

There are no non-standard protein/DNA/RNA residues in this entry.

## 5.5 Carbohydrates ⓘ

24 monosaccharides are modelled in this entry.

In the following table, the Counts columns list the number of bonds (or angles) for which Mogul statistics could be retrieved, the number of bonds (or angles) that are observed in the model and the number of bonds (or angles) that are defined in the Chemical Component Dictionary. The Link column lists molecule types, if any, to which the group is linked. The Z score for a bond length (or angle) is the number of standard deviations the observed value is removed from the expected value. A bond length (or angle) with  $|Z| > 2$  is considered an outlier worth inspection. RMSZ is the root-mean-square of all Z scores of the bond lengths (or angles).

Mol	Type	Chain	Res	Link	Bond lengths			Bond angles		
					Counts	RMSZ	$\# Z  > 2$	Counts	RMSZ	$\# Z  > 2$
6	NAG	F	1	1,6	14,14,15	0.77	0	17,19,21	1.05	1 (5%)

Mol	Type	Chain	Res	Link	Bond lengths			Bond angles		
					Counts	RMSZ	# Z  > 2	Counts	RMSZ	# Z  > 2
6	NAG	F	2	6	14,14,15	0.78	0	17,19,21	0.86	0
7	NAG	G	1	7,4	14,14,15	0.70	0	17,19,21	1.18	2 (11%)
7	NAG	G	2	7	14,14,15	0.64	0	17,19,21	1.75	3 (17%)
7	BMA	G	3	7	11,11,12	0.86	0	15,15,17	2.38	4 (26%)
7	MAN	G	4	7	11,11,12	0.75	0	15,15,17	1.22	1 (6%)
7	MAN	G	5	7	11,11,12	0.85	1 (9%)	15,15,17	0.87	0
7	MAN	G	6	7	11,11,12	0.71	0	15,15,17	1.38	1 (6%)
7	MAN	G	7	7	11,11,12	0.67	0	15,15,17	1.42	1 (6%)
8	NAG	I	1	5,8	14,14,15	0.88	1 (7%)	17,19,21	2.10	4 (23%)
8	NAG	I	2	8	14,14,15	0.68	0	17,19,21	2.23	6 (35%)
8	BMA	I	3	8	11,11,12	0.90	0	15,15,17	2.53	4 (26%)
6	NAG	M	1	5,6	14,14,15	0.74	0	17,19,21	1.20	1 (5%)
6	NAG	M	2	6	14,14,15	0.67	0	17,19,21	0.92	1 (5%)
9	NAG	N	1	4,9	14,14,15	0.78	0	17,19,21	1.06	1 (5%)
9	NAG	N	2	9	14,14,15	0.76	0	17,19,21	0.86	0
9	BMA	N	3	9	11,11,12	0.82	0	15,15,17	1.66	3 (20%)
9	MAN	N	4	9	11,11,12	0.72	0	15,15,17	1.07	1 (6%)
9	MAN	N	5	9	11,11,12	0.68	0	15,15,17	1.31	1 (6%)
6	NAG	O	1	5,6	14,14,15	0.72	0	17,19,21	1.14	1 (5%)
6	NAG	O	2	6	14,14,15	0.75	0	17,19,21	0.81	0
8	NAG	P	1	5,8	14,14,15	0.80	0	17,19,21	0.99	1 (5%)
8	NAG	P	2	8	14,14,15	0.70	0	17,19,21	1.92	5 (29%)
8	BMA	P	3	8	11,11,12	0.83	0	15,15,17	1.73	1 (6%)

In the following table, the Chirals column lists the number of chiral outliers, the number of chiral centers analysed, the number of these observed in the model and the number defined in the Chemical Component Dictionary. Similar counts are reported in the Torsion and Rings columns. '-' means no outliers of that kind were identified.

Mol	Type	Chain	Res	Link	Chirals	Torsions	Rings
6	NAG	F	1	1,6	-	0/6/23/26	0/1/1/1
6	NAG	F	2	6	-	0/6/23/26	0/1/1/1
7	NAG	G	1	7,4	-	1/6/23/26	0/1/1/1
7	NAG	G	2	7	-	3/6/23/26	0/1/1/1
7	BMA	G	3	7	-	1/2/19/22	0/1/1/1
7	MAN	G	4	7	-	1/2/19/22	1/1/1/1
7	MAN	G	5	7	-	0/2/19/22	1/1/1/1
7	MAN	G	6	7	-	2/2/19/22	0/1/1/1

Continued on next page...

*Continued from previous page...*

Mol	Type	Chain	Res	Link	Chirals	Torsions	Rings
7	MAN	G	7	7	-	2/2/19/22	1/1/1/1
8	NAG	I	1	5,8	-	0/6/23/26	0/1/1/1
8	NAG	I	2	8	-	5/6/23/26	0/1/1/1
8	BMA	I	3	8	-	1/2/19/22	0/1/1/1
6	NAG	M	1	5,6	-	2/6/23/26	0/1/1/1
6	NAG	M	2	6	-	0/6/23/26	0/1/1/1
9	NAG	N	1	4,9	-	2/6/23/26	0/1/1/1
9	NAG	N	2	9	-	0/6/23/26	0/1/1/1
9	BMA	N	3	9	-	2/2/19/22	0/1/1/1
9	MAN	N	4	9	-	1/2/19/22	1/1/1/1
9	MAN	N	5	9	-	1/2/19/22	1/1/1/1
6	NAG	O	1	5,6	-	1/6/23/26	0/1/1/1
6	NAG	O	2	6	-	2/6/23/26	0/1/1/1
8	NAG	P	1	5,8	-	0/6/23/26	0/1/1/1
8	NAG	P	2	8	-	5/6/23/26	0/1/1/1
8	BMA	P	3	8	-	1/2/19/22	0/1/1/1

All (2) bond length outliers are listed below:

Mol	Chain	Res	Type	Atoms	Z	Observed(Å)	Ideal(Å)
8	I	1	NAG	O5-C1	-2.30	1.39	1.43
7	G	5	MAN	O5-C1	-2.22	1.40	1.43

All (43) bond angle outliers are listed below:

Mol	Chain	Res	Type	Atoms	Z	Observed(°)	Ideal(°)
8	I	3	BMA	C1-O5-C5	7.54	122.29	112.19
8	I	1	NAG	C1-O5-C5	-6.44	103.56	112.19
7	G	3	BMA	C1-O5-C5	6.17	120.45	112.19
8	P	3	BMA	C1-O5-C5	5.24	119.21	112.19
8	P	2	NAG	C2-N2-C7	5.18	129.85	122.90
7	G	2	NAG	C2-N2-C7	5.16	129.81	122.90
8	I	2	NAG	C2-N2-C7	4.80	129.33	122.90
7	G	7	MAN	C1-O5-C5	4.55	118.29	112.19
7	G	6	MAN	C1-O5-C5	4.50	118.22	112.19
9	N	3	BMA	C1-O5-C5	4.39	118.06	112.19
9	N	5	MAN	C1-O5-C5	4.15	117.75	112.19
7	G	3	BMA	C3-C4-C5	4.15	117.75	110.23
8	I	2	NAG	C4-C3-C2	-3.89	105.32	111.02
7	G	4	MAN	C1-O5-C5	3.68	117.11	112.19

*Continued on next page...*

*Continued from previous page...*

Mol	Chain	Res	Type	Atoms	Z	Observed(°)	Ideal(°)
8	I	2	NAG	O4-C4-C5	3.50	117.95	109.32
8	I	3	BMA	C1-C2-C3	3.31	114.46	109.64
8	P	2	NAG	C4-C3-C2	-3.25	106.25	111.02
8	I	2	NAG	C1-O5-C5	3.09	116.33	112.19
8	I	1	NAG	C3-C4-C5	3.08	115.82	110.23
9	N	1	NAG	O5-C1-C2	-3.01	106.64	111.29
9	N	4	MAN	C1-O5-C5	2.98	116.18	112.19
6	F	1	NAG	O5-C1-C2	-2.98	106.68	111.29
8	I	3	BMA	C2-C3-C4	2.87	115.90	110.86
7	G	3	BMA	O4-C4-C3	-2.83	103.70	110.38
8	I	2	NAG	C3-C4-C5	-2.72	105.30	110.23
8	I	1	NAG	O4-C4-C3	-2.67	104.09	110.38
6	O	1	NAG	O5-C1-C2	-2.66	107.18	111.29
8	P	2	NAG	C1-C2-N2	2.61	114.55	110.43
6	M	2	NAG	O5-C1-C2	-2.60	107.28	111.29
7	G	3	BMA	C2-C3-C4	2.59	115.41	110.86
8	I	2	NAG	C1-C2-N2	2.58	114.49	110.43
7	G	1	NAG	C2-N2-C7	2.51	126.26	122.90
8	I	1	NAG	C1-C2-N2	2.49	114.36	110.43
6	M	1	NAG	O4-C4-C3	-2.43	104.65	110.38
8	P	2	NAG	C1-O5-C5	2.41	115.41	112.19
8	P	2	NAG	O5-C1-C2	-2.29	107.75	111.29
7	G	2	NAG	C1-O5-C5	2.19	115.12	112.19
8	I	3	BMA	O3-C3-C2	-2.16	105.65	110.05
9	N	3	BMA	O4-C4-C3	-2.13	105.34	110.38
7	G	2	NAG	O5-C1-C2	-2.12	108.02	111.29
9	N	3	BMA	C3-C4-C5	2.06	113.98	110.23
8	P	1	NAG	O5-C1-C2	-2.01	108.18	111.29
7	G	1	NAG	C1-O5-C5	2.01	114.88	112.19

There are no chirality outliers.

All (33) torsion outliers are listed below:

Mol	Chain	Res	Type	Atoms
7	G	1	NAG	C1-C2-N2-C7
8	I	2	NAG	C1-C2-N2-C7
9	N	1	NAG	C1-C2-N2-C7
8	I	2	NAG	C4-C5-C6-O6
9	N	3	BMA	C4-C5-C6-O6
8	I	2	NAG	O5-C5-C6-O6
9	N	3	BMA	O5-C5-C6-O6
7	G	7	MAN	O5-C5-C6-O6

*Continued on next page...*

*Continued from previous page...*

Mol	Chain	Res	Type	Atoms
7	G	7	MAN	C4-C5-C6-O6
7	G	6	MAN	O5-C5-C6-O6
7	G	6	MAN	C4-C5-C6-O6
6	M	1	NAG	O5-C5-C6-O6
7	G	2	NAG	C8-C7-N2-C2
7	G	2	NAG	O7-C7-N2-C2
8	I	2	NAG	C8-C7-N2-C2
8	I	2	NAG	O7-C7-N2-C2
8	P	2	NAG	C8-C7-N2-C2
8	P	2	NAG	O7-C7-N2-C2
8	P	3	BMA	O5-C5-C6-O6
8	I	3	BMA	O5-C5-C6-O6
8	P	2	NAG	O5-C5-C6-O6
9	N	4	MAN	O5-C5-C6-O6
6	O	1	NAG	C3-C2-N2-C7
6	M	1	NAG	C4-C5-C6-O6
6	O	2	NAG	C1-C2-N2-C7
6	O	2	NAG	C3-C2-N2-C7
7	G	2	NAG	C3-C2-N2-C7
8	P	2	NAG	C3-C2-N2-C7
7	G	4	MAN	O5-C5-C6-O6
8	P	2	NAG	C1-C2-N2-C7
9	N	1	NAG	C3-C2-N2-C7
7	G	3	BMA	O5-C5-C6-O6
9	N	5	MAN	O5-C5-C6-O6

All (5) ring outliers are listed below:

Mol	Chain	Res	Type	Atoms
7	G	7	MAN	C1-C2-C3-C4-C5-O5
7	G	5	MAN	C1-C2-C3-C4-C5-O5
9	N	5	MAN	C1-C2-C3-C4-C5-O5
9	N	4	MAN	C1-C2-C3-C4-C5-O5
7	G	4	MAN	C1-C2-C3-C4-C5-O5

8 monomers are involved in 10 short contacts:

Mol	Chain	Res	Type	Clashes	Symm-Clashes
7	G	7	MAN	1	0
8	I	2	NAG	2	0
8	P	3	BMA	1	0
7	G	3	BMA	1	0

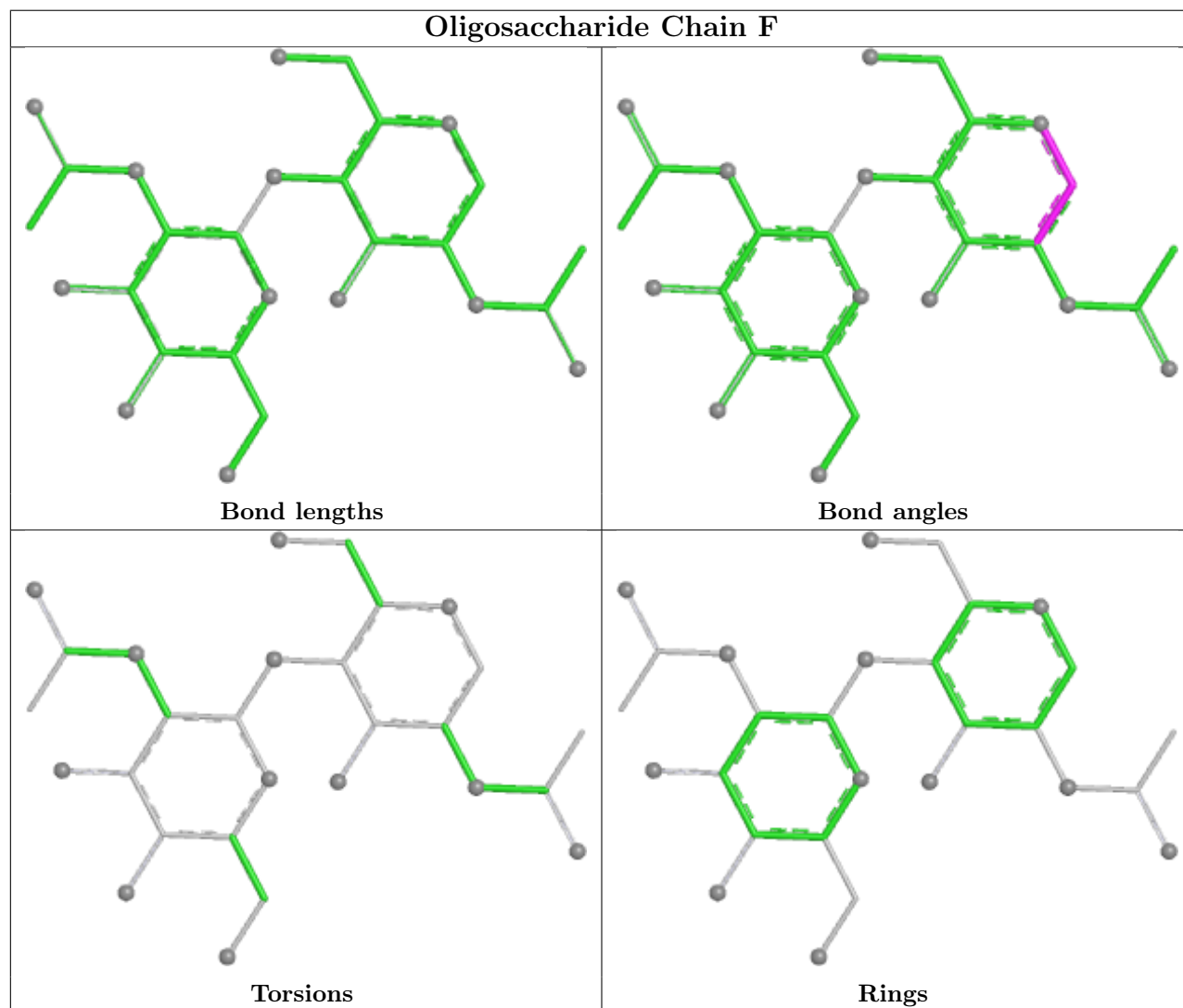
*Continued on next page...*

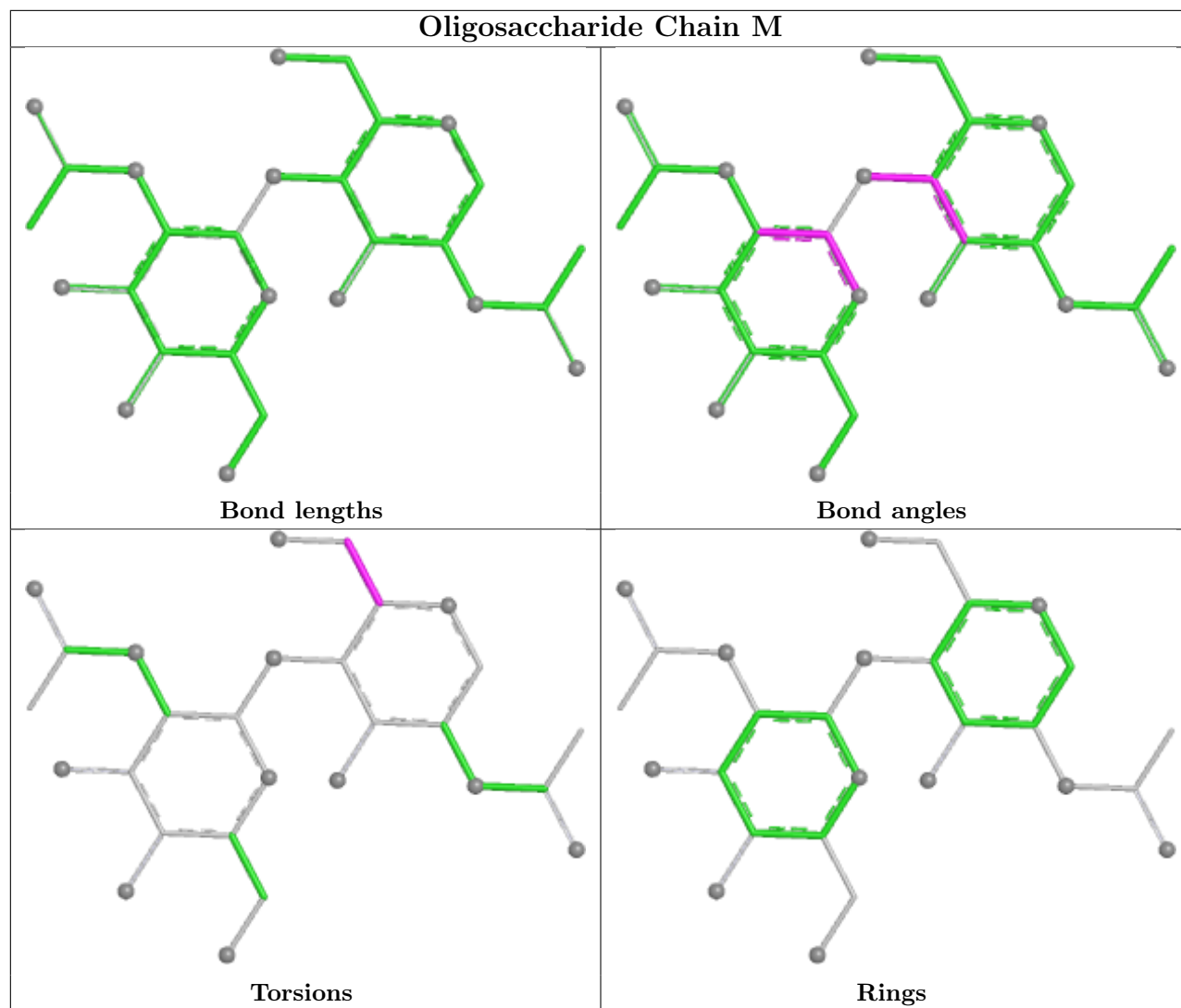


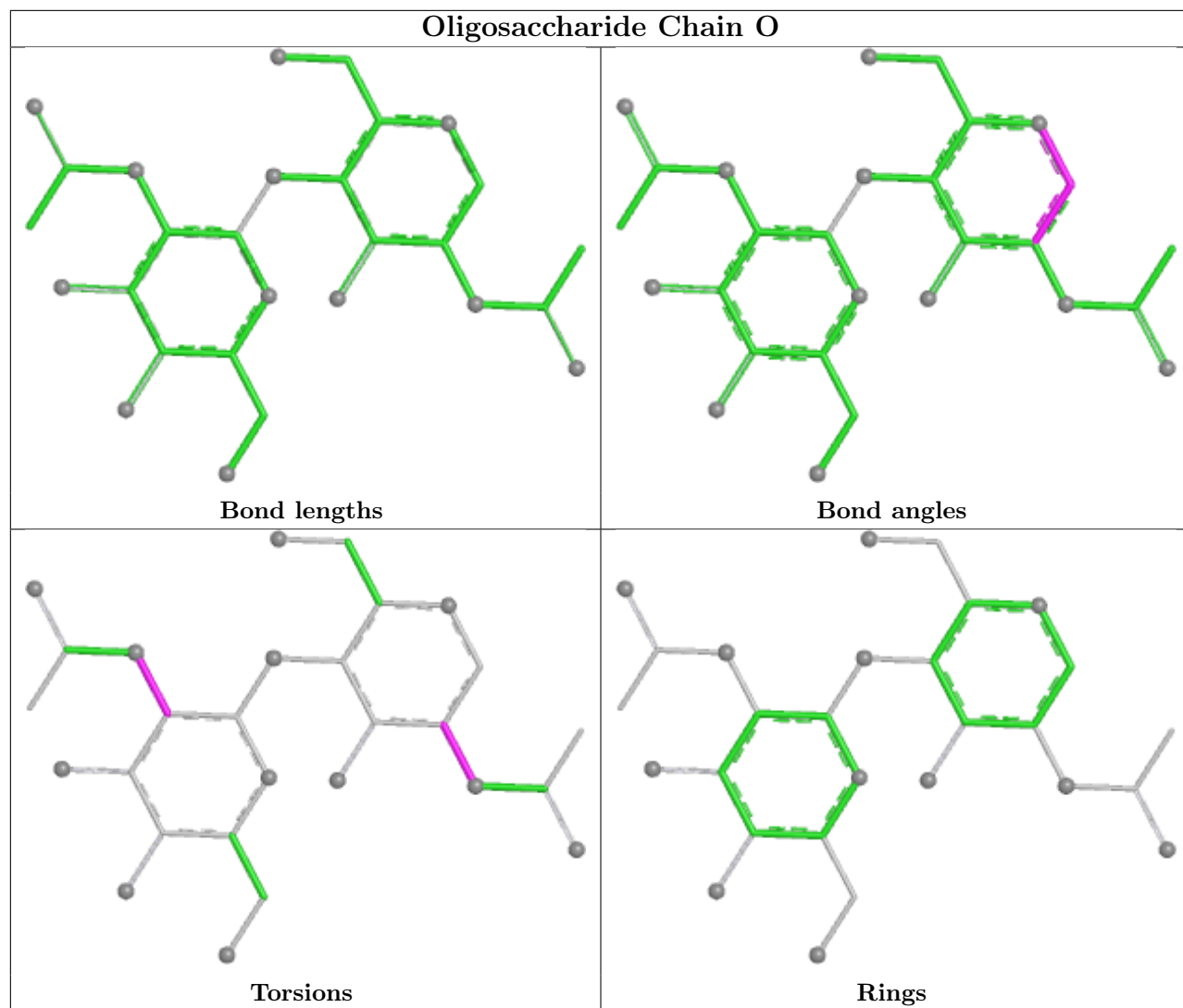
*Continued from previous page...*

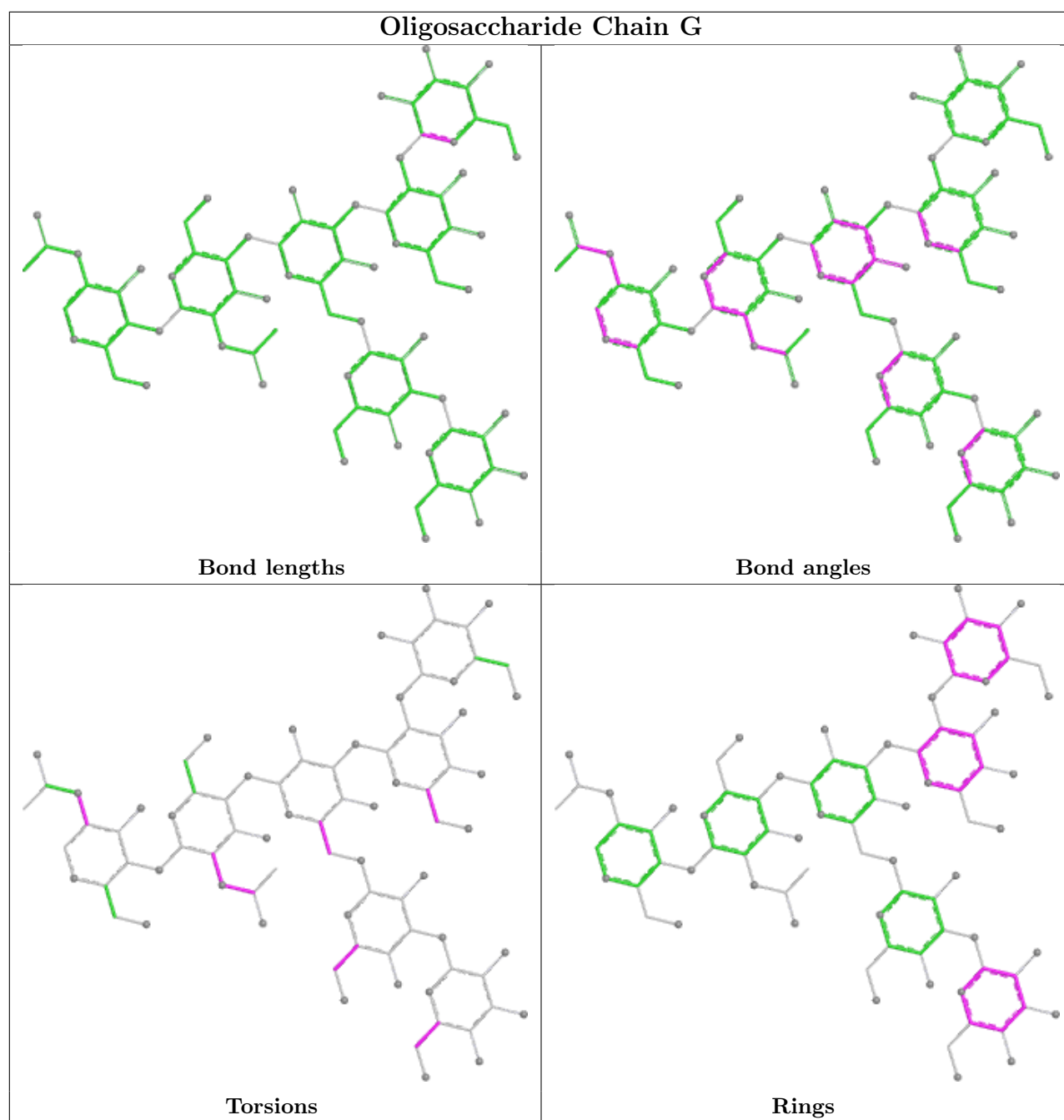
Mol	Chain	Res	Type	Clashes	Symm-Clashes
6	F	2	NAG	2	0
8	P	2	NAG	2	0
7	G	2	NAG	2	0
7	G	6	MAN	3	0

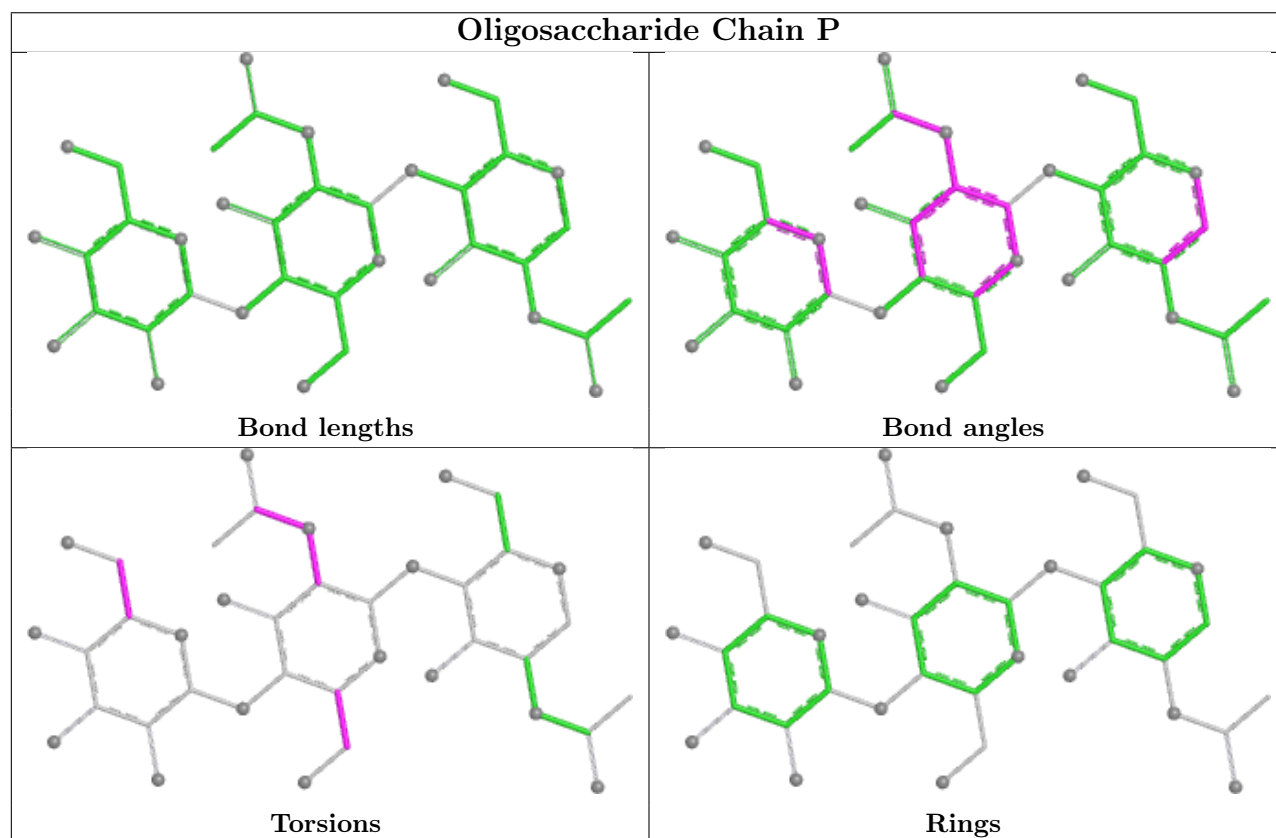
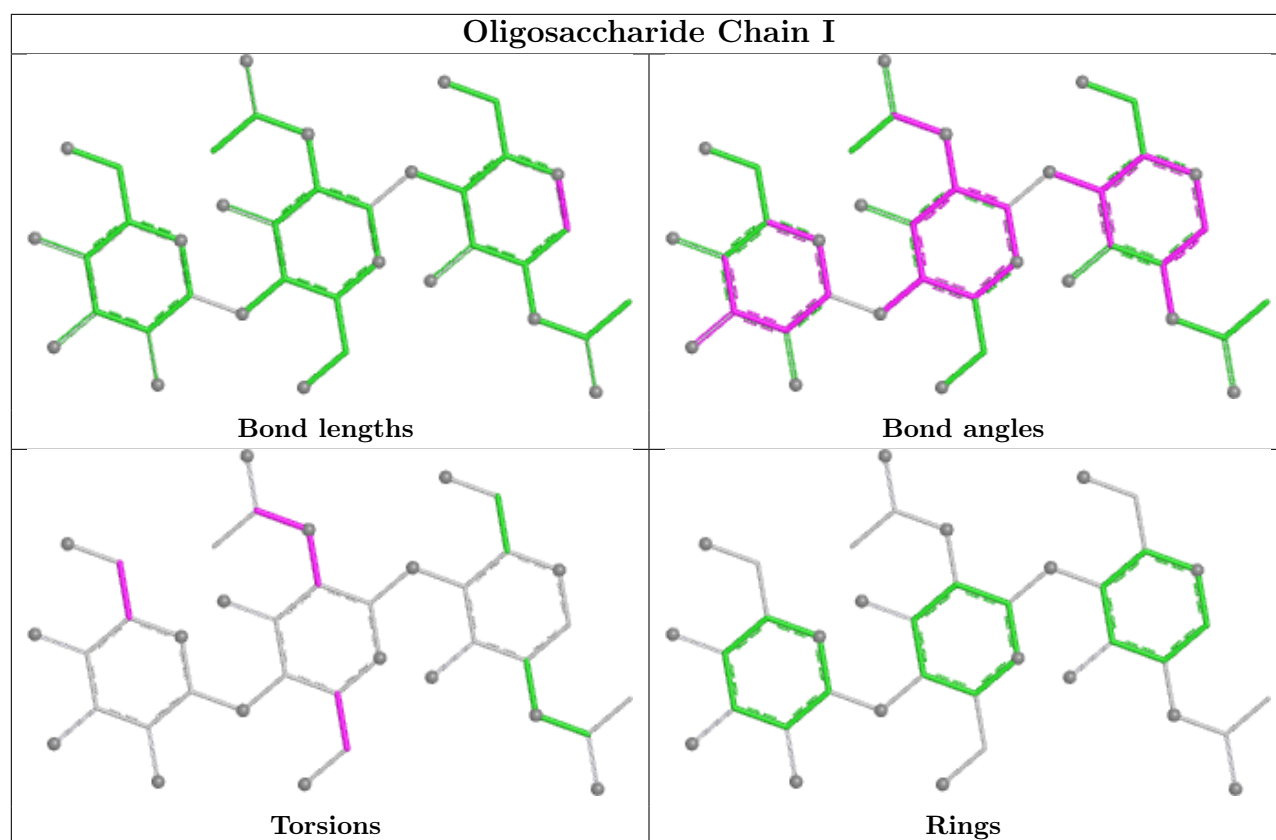
The following is a two-dimensional graphical depiction of Mogul quality analysis of bond lengths, bond angles, torsion angles, and ring geometry for oligosaccharide.

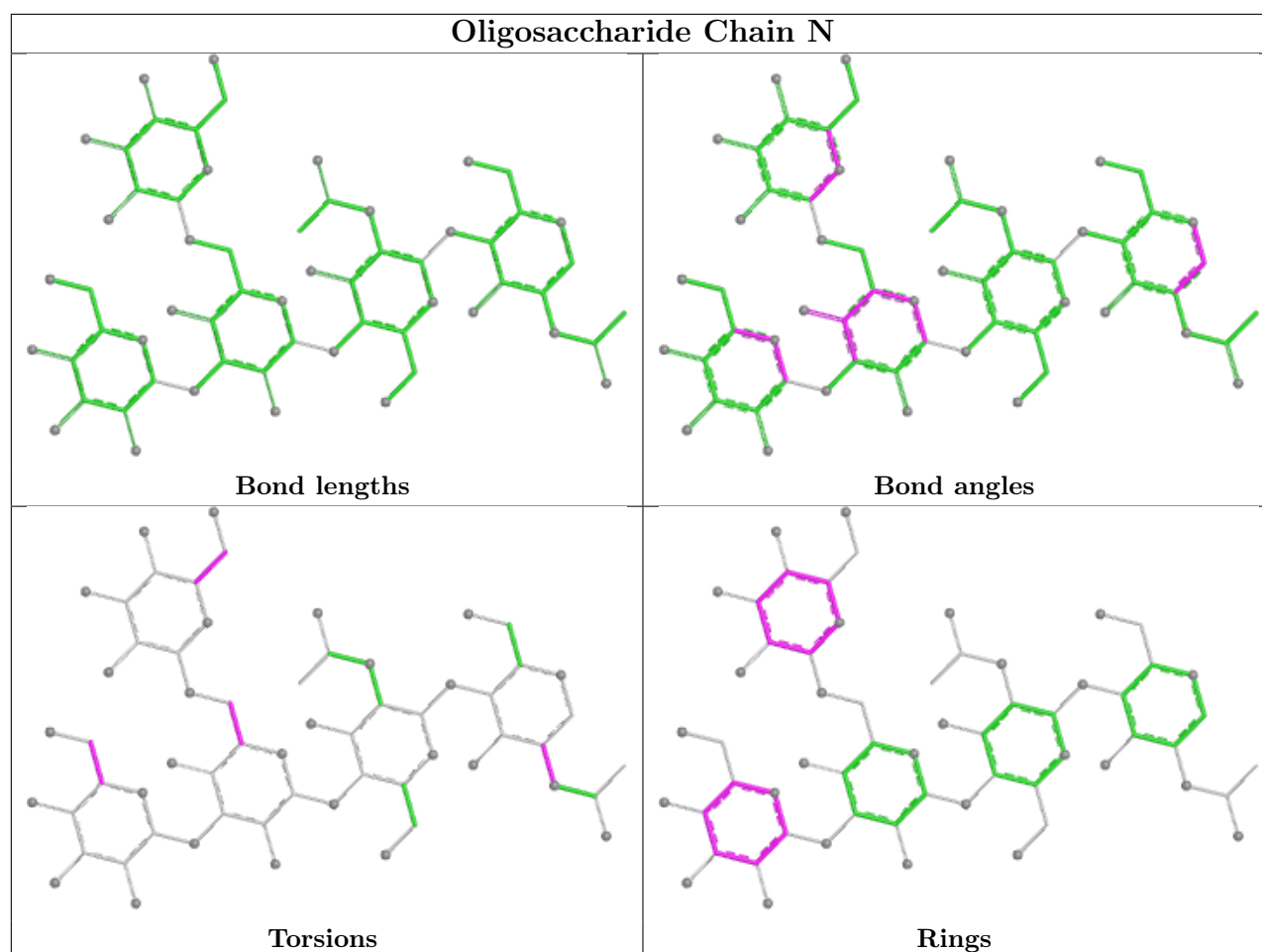












## 5.6 Ligand geometry [i](#)

4 ligands are modelled in this entry.

In the following table, the Counts columns list the number of bonds (or angles) for which Mogul statistics could be retrieved, the number of bonds (or angles) that are observed in the model and the number of bonds (or angles) that are defined in the Chemical Component Dictionary. The Link column lists molecule types, if any, to which the group is linked. The Z score for a bond length (or angle) is the number of standard deviations the observed value is removed from the expected value. A bond length (or angle) with  $|Z| > 2$  is considered an outlier worth inspection. RMSZ is the root-mean-square of all Z scores of the bond lengths (or angles).

Mol	Type	Chain	Res	Link	Bond lengths			Bond angles		
					Counts	RMSZ	$\# Z  > 2$	Counts	RMSZ	$\# Z  > 2$
10	NAG	D	501	1	14,14,15	0.71	0	17,19,21	1.21	1 (5%)
12	A1CEP	C	501	-	24,27,27	6.68	15 (62%)	31,39,39	2.88	11 (35%)
11	ABU	B	501	-	6,6,6	2.09	2 (33%)	6,6,6	0.98	0
11	ABU	A	501	-	6,6,6	2.11	2 (33%)	6,6,6	0.99	0

In the following table, the Chirals column lists the number of chiral outliers, the number of chiral centers analysed, the number of these observed in the model and the number defined in the Chemical Component Dictionary. Similar counts are reported in the Torsion and Rings columns. '-' means no outliers of that kind were identified.

Mol	Type	Chain	Res	Link	Chirals	Torsions	Rings
10	NAG	D	501	1	-	3/6/23/26	0/1/1/1
12	A1CEP	C	501	-	-	2/8/8/8	0/4/4/4
11	ABU	B	501	-	-	2/4/4/4	-
11	ABU	A	501	-	-	2/4/4/4	-

All (19) bond length outliers are listed below:

Mol	Chain	Res	Type	Atoms	Z	Observed(Å)	Ideal(Å)
12	C	501	A1CEP	C12-N04	19.88	1.68	1.42
12	C	501	A1CEP	C07-C09	14.97	1.69	1.43
12	C	501	A1CEP	C15-C11	13.53	1.62	1.41
12	C	501	A1CEP	C11-N06	9.16	1.52	1.37
12	C	501	A1CEP	C16-C17	5.99	1.50	1.38
12	C	501	A1CEP	C13-C08	5.49	1.50	1.40
12	C	501	A1CEP	C14-C09	4.80	1.51	1.42
11	A	501	ABU	CG-C	4.33	1.60	1.50
11	B	501	ABU	CG-C	4.31	1.60	1.50
12	C	501	A1CEP	C08-C10	4.01	1.55	1.48
12	C	501	A1CEP	C21-C19	3.97	1.45	1.38
12	C	501	A1CEP	C20-C18	3.64	1.44	1.38
12	C	501	A1CEP	O02-C17	3.29	1.44	1.37
12	C	501	A1CEP	C21-C22	2.62	1.43	1.38
12	C	501	A1CEP	C18-C12	2.49	1.44	1.39
12	C	501	A1CEP	C19-C12	2.45	1.43	1.39
11	A	501	ABU	O-C	2.44	1.30	1.22
11	B	501	ABU	O-C	2.42	1.30	1.22
12	C	501	A1CEP	O03-C22	2.38	1.42	1.37

All (12) bond angle outliers are listed below:

Mol	Chain	Res	Type	Atoms	Z	Observed(°)	Ideal(°)
12	C	501	A1CEP	C08-C10-N04	10.14	111.16	104.84
12	C	501	A1CEP	C13-N06-C11	6.27	124.21	116.96
12	C	501	A1CEP	C15-C11-N06	4.88	123.62	118.01
12	C	501	A1CEP	C09-C11-N06	-3.81	118.78	122.82
10	D	501	NAG	C2-N2-C7	3.57	127.69	122.90
12	C	501	A1CEP	C08-C07-C09	-2.98	118.95	122.09
12	C	501	A1CEP	C16-C14-C09	2.86	125.15	121.15

*Continued on next page...*

*Continued from previous page...*

Mol	Chain	Res	Type	Atoms	Z	Observed(°)	Ideal(°)
12	C	501	A1CEP	C17-C15-C11	2.68	122.63	119.12
12	C	501	A1CEP	C19-C12-N04	2.61	122.64	119.84
12	C	501	A1CEP	C16-C17-C15	-2.39	117.72	120.83
12	C	501	A1CEP	C21-C22-C20	-2.14	117.05	120.16
12	C	501	A1CEP	C08-C13-N06	-2.01	122.59	125.20

There are no chirality outliers.

All (9) torsion outliers are listed below:

Mol	Chain	Res	Type	Atoms
10	D	501	NAG	C8-C7-N2-C2
10	D	501	NAG	O7-C7-N2-C2
12	C	501	A1CEP	C21-C22-O03-C24
10	D	501	NAG	O5-C5-C6-O6
12	C	501	A1CEP	C20-C22-O03-C24
11	B	501	ABU	O-C-CG-CB
11	B	501	ABU	OXT-C-CG-CB
11	A	501	ABU	O-C-CG-CB
11	A	501	ABU	OXT-C-CG-CB

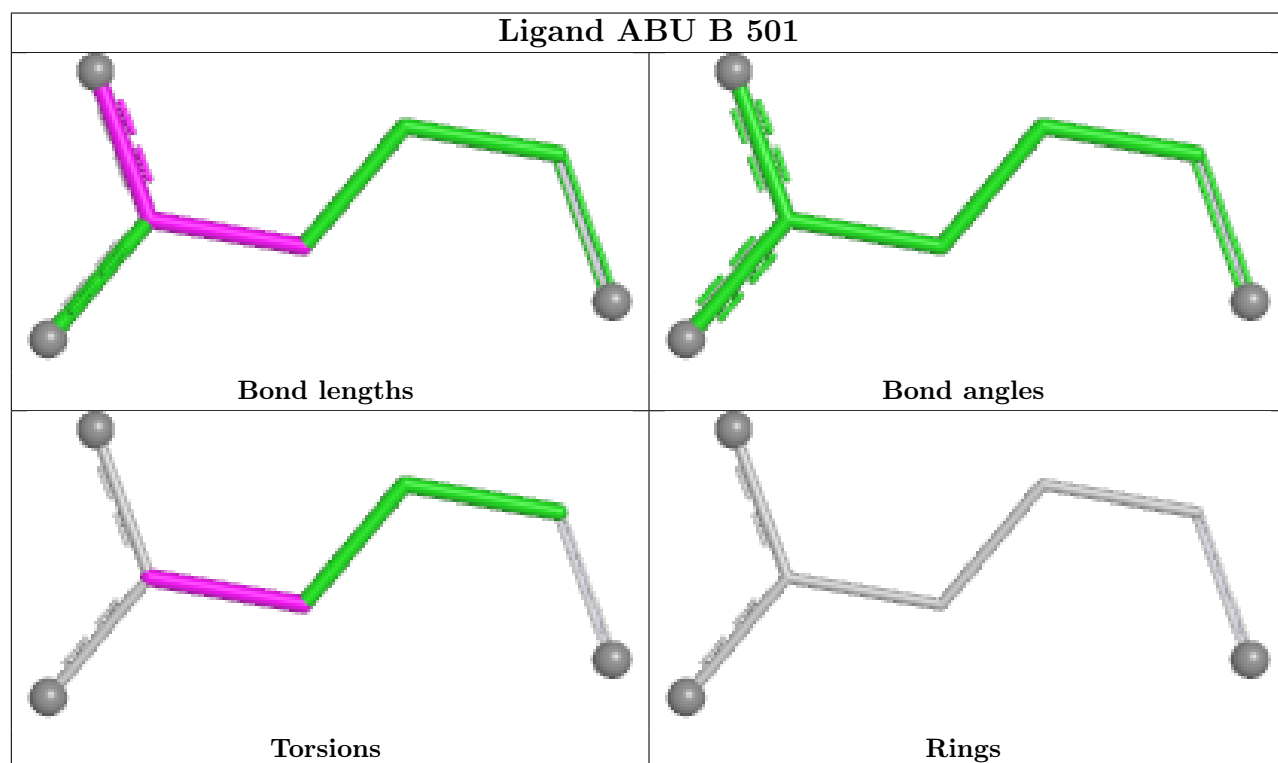
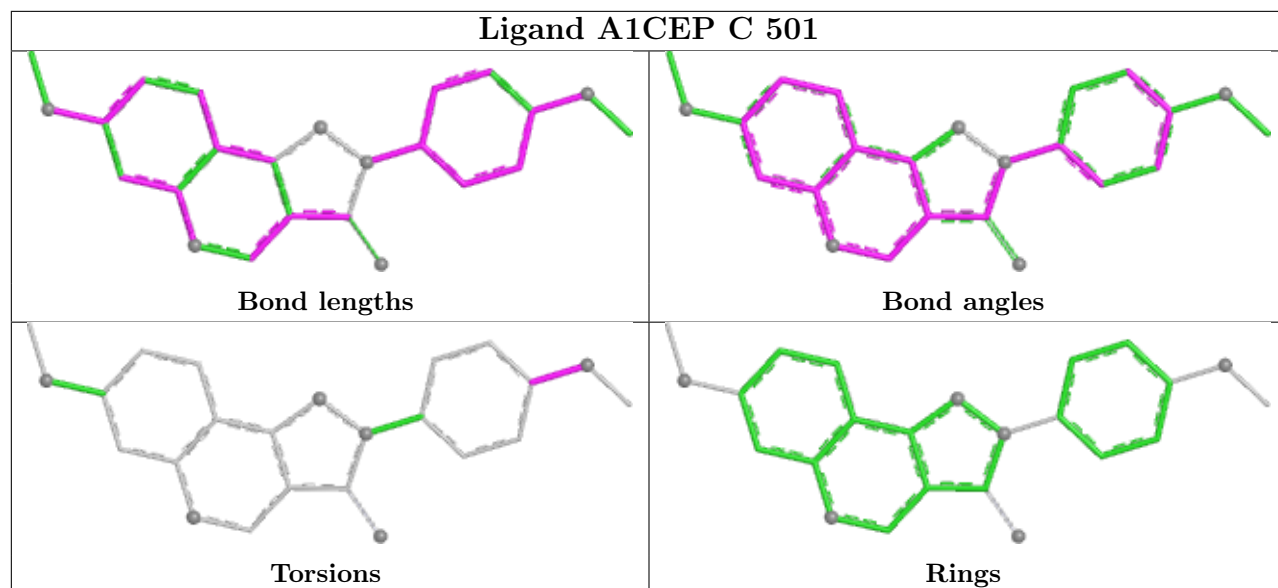
There are no ring outliers.

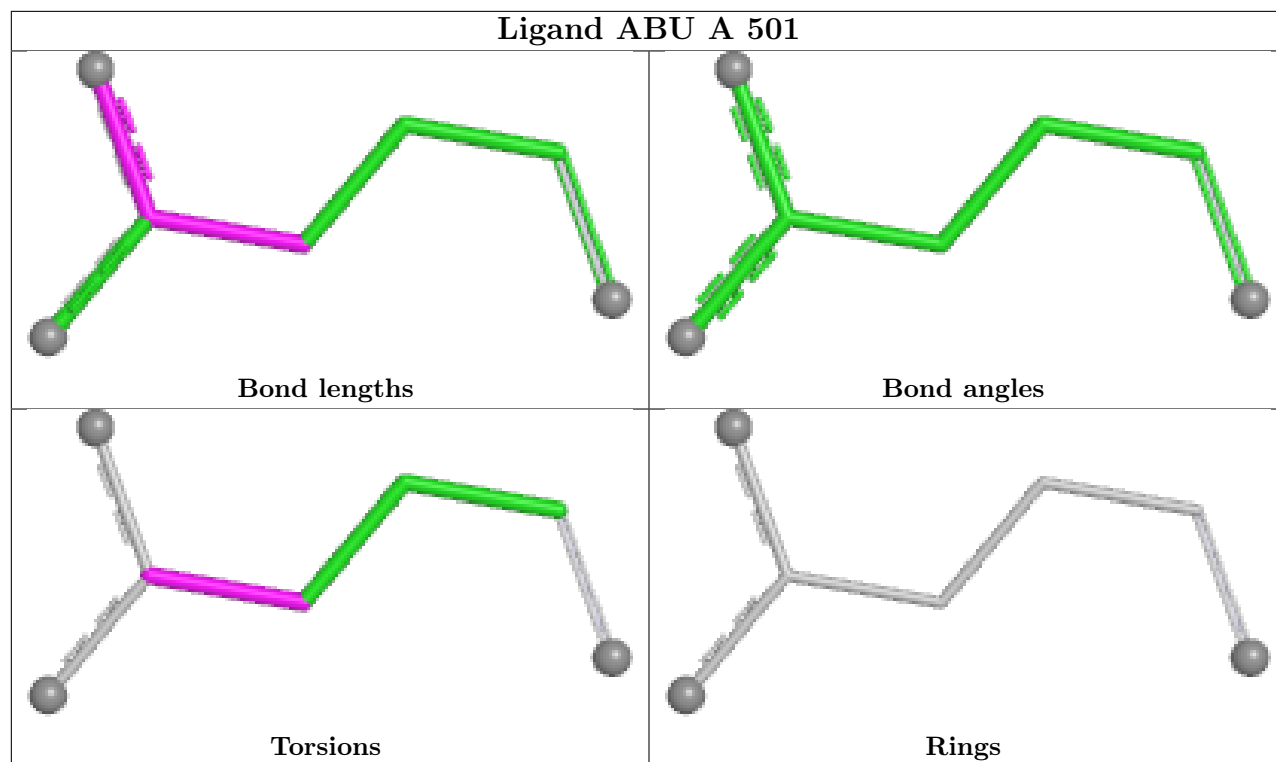
3 monomers are involved in 5 short contacts:

Mol	Chain	Res	Type	Clashes	Symm-Clashes
12	C	501	A1CEP	2	0
11	B	501	ABU	1	0
11	A	501	ABU	2	0

The following is a two-dimensional graphical depiction of Mogul quality analysis of bond lengths, bond angles, torsion angles, and ring geometry for all instances of the Ligand of Interest. In addition, ligands with molecular weight > 250 and outliers as shown on the validation Tables will also be included. For torsion angles, if less than 5% of the Mogul distribution of torsion angles is within 10 degrees of the torsion angle in question, then that torsion angle is considered an outlier. Any bond that is central to one or more torsion angles identified as an outlier by Mogul will be highlighted in the graph. For rings, the root-mean-square deviation (RMSD) between the ring in question and similar rings identified by Mogul is calculated over all ring torsion angles. If the average RMSD is greater than 60 degrees and the minimal RMSD between the ring in question and any Mogul-identified rings is also greater than 60 degrees, then that ring is considered an outlier. The outliers are highlighted in purple. The color gray indicates Mogul did not find sufficient equivalents in the CSD to analyse the geometry.







## 5.7 Other polymers [i](#)

There are no such residues in this entry.

## 5.8 Polymer linkage issues [i](#)

There are no chain breaks in this entry.

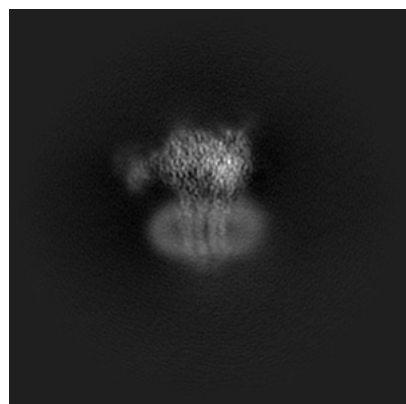
## 6 Map visualisation [i](#)

This section contains visualisations of the EMDB entry EMD-70873. These allow visual inspection of the internal detail of the map and identification of artifacts.

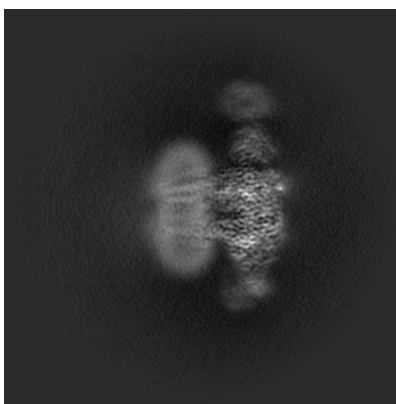
Images derived from a raw map, generated by summing the deposited half-maps, are presented below the corresponding image components of the primary map to allow further visual inspection and comparison with those of the primary map.

### 6.1 Orthogonal projections [i](#)

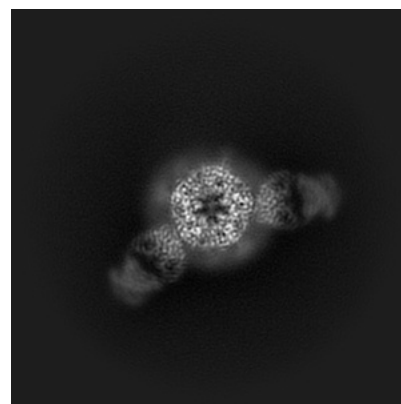
#### 6.1.1 Primary map



X

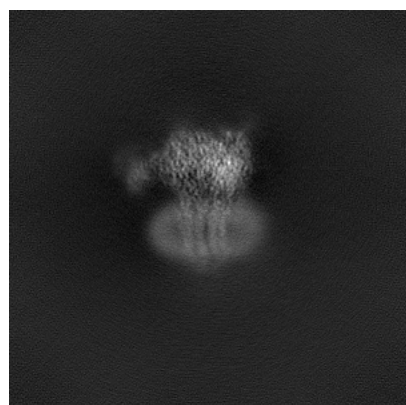


Y

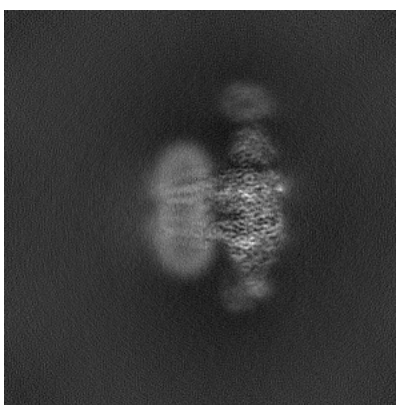


Z

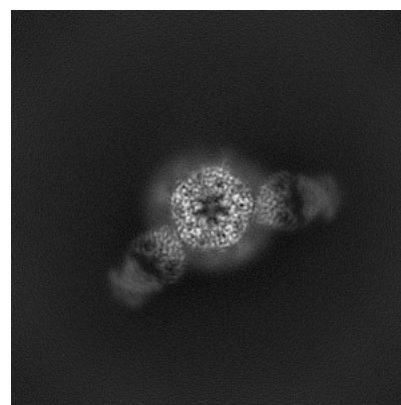
#### 6.1.2 Raw map



X



Y

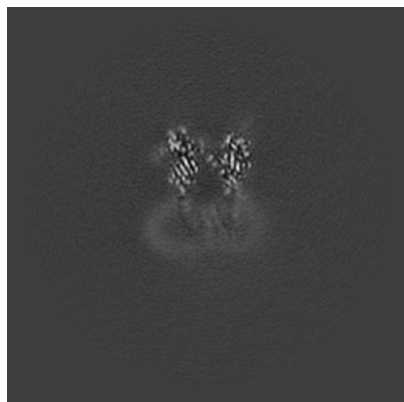


Z

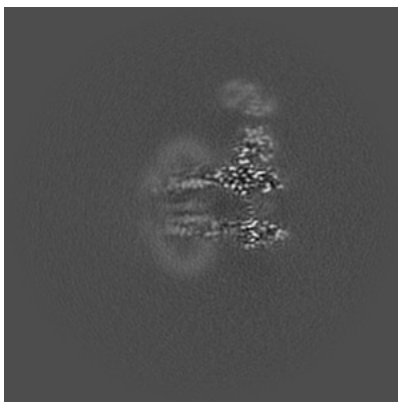
The images above show the map projected in three orthogonal directions.

## 6.2 Central slices [i](#)

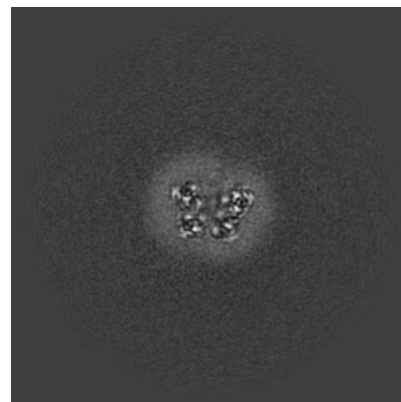
### 6.2.1 Primary map



X Index: 180

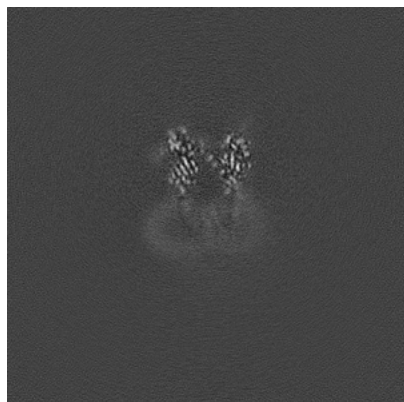


Y Index: 180



Z Index: 180

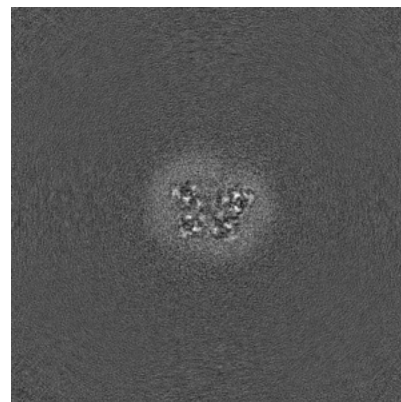
### 6.2.2 Raw map



X Index: 180



Y Index: 180

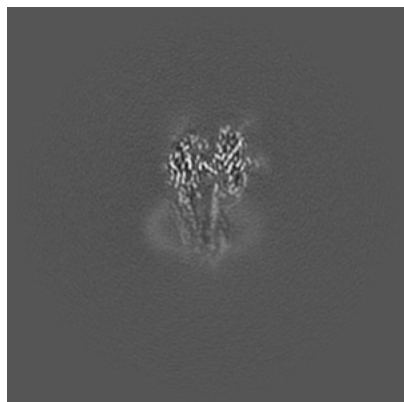


Z Index: 180

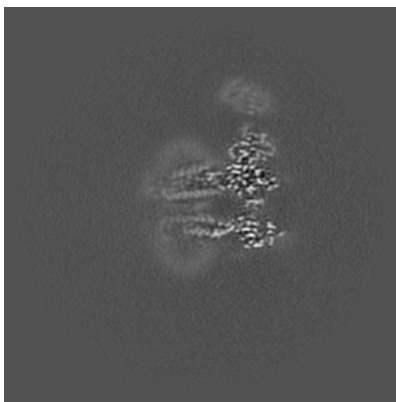
The images above show central slices of the map in three orthogonal directions.

## 6.3 Largest variance slices [i](#)

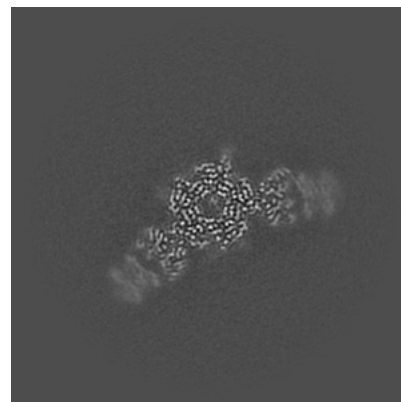
### 6.3.1 Primary map



X Index: 193

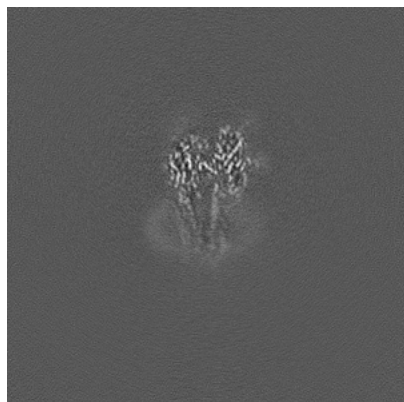


Y Index: 185

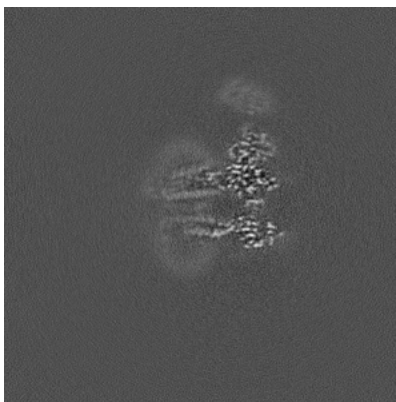


Z Index: 218

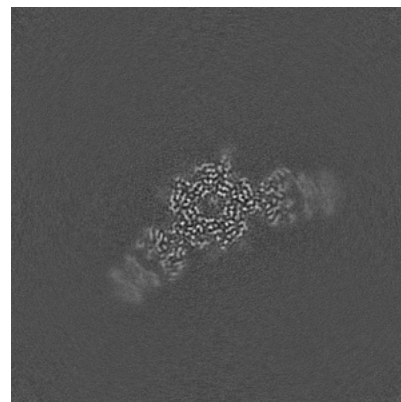
### 6.3.2 Raw map



X Index: 193



Y Index: 185

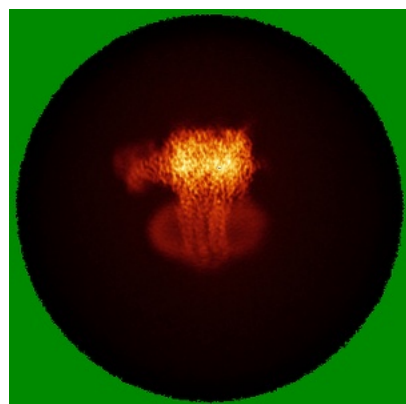


Z Index: 218

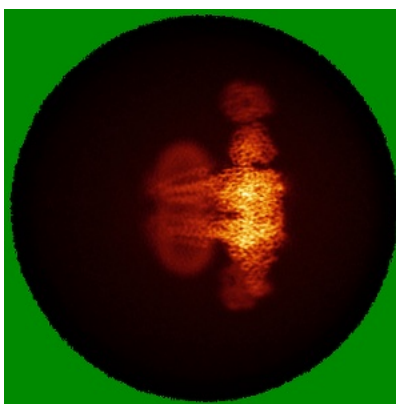
The images above show the largest variance slices of the map in three orthogonal directions.

## 6.4 Orthogonal standard-deviation projections (False-color) ⓘ

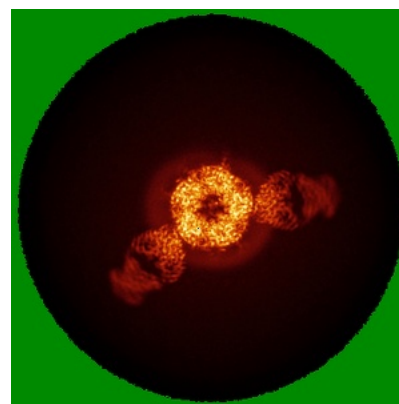
### 6.4.1 Primary map



X

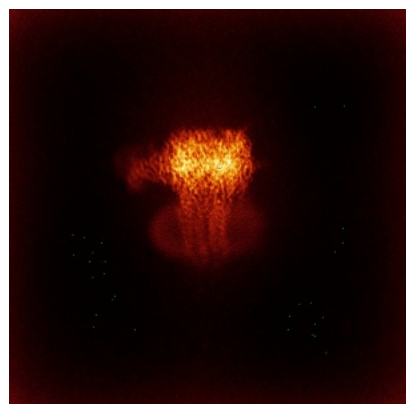


Y

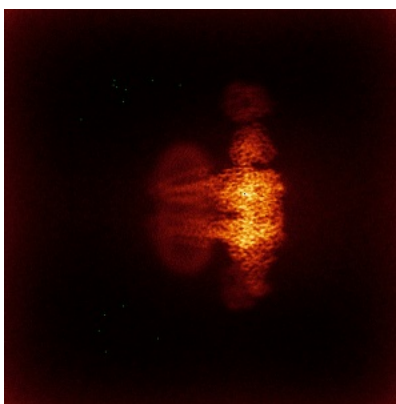


Z

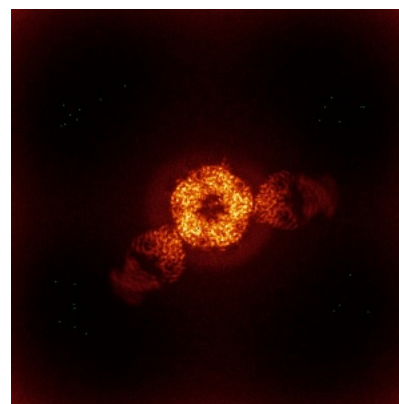
### 6.4.2 Raw map



X



Y



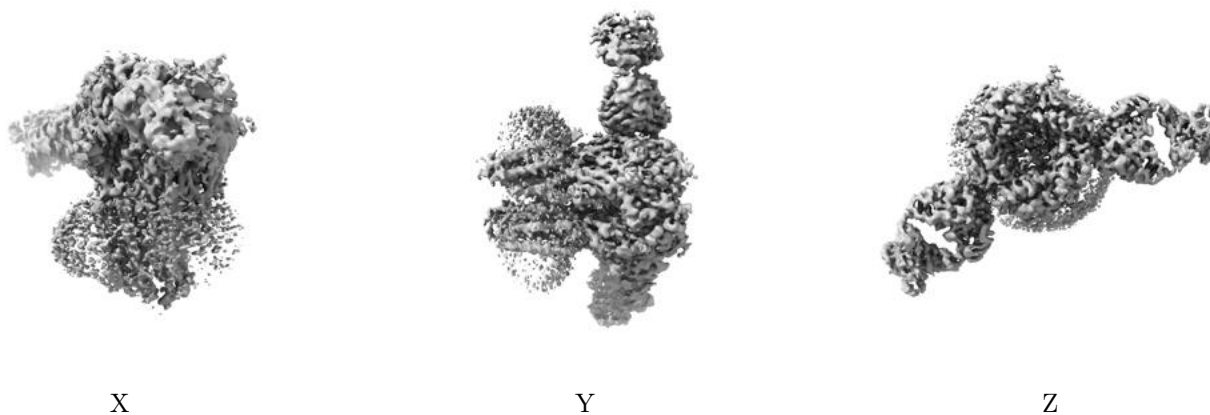
Z

The images above show the map standard deviation projections with false color in three orthogonal directions. Minimum values are shown in green, max in blue, and dark to light orange shades represent small to large values respectively.



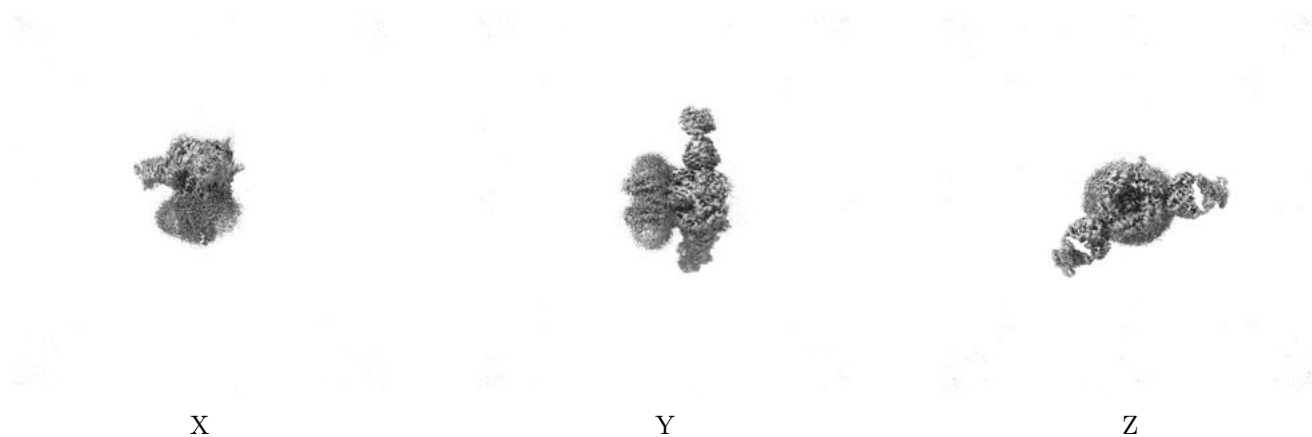
## 6.5 Orthogonal surface views [i](#)

### 6.5.1 Primary map



The images above show the 3D surface view of the map at the recommended contour level 0.1. These images, in conjunction with the slice images, may facilitate assessment of whether an appropriate contour level has been provided.

### 6.5.2 Raw map



These images show the 3D surface of the raw map. The raw map's contour level was selected so that its surface encloses the same volume as the primary map does at its recommended contour level.

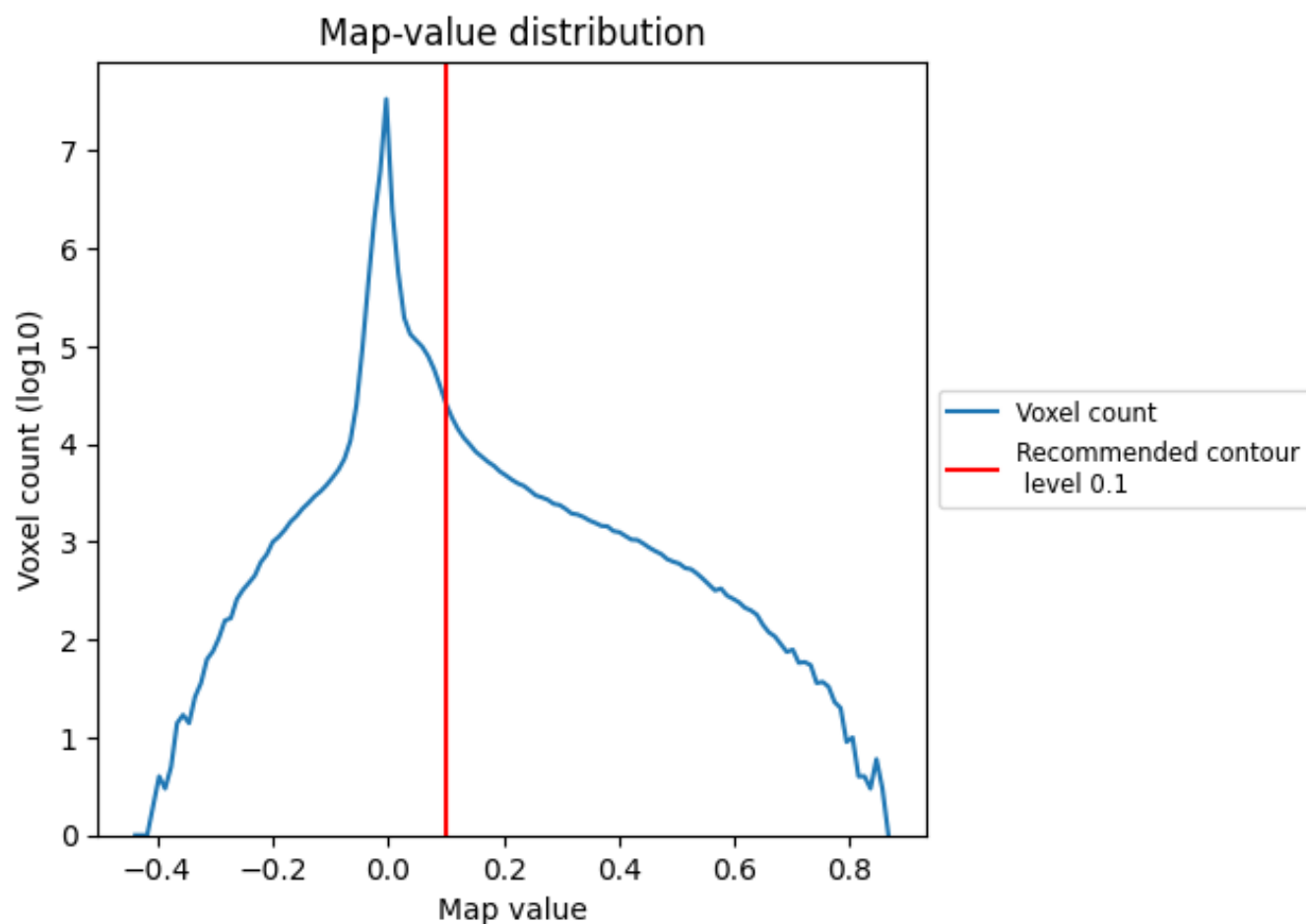
## 6.6 Mask visualisation [i](#)

This section was not generated. No masks/segmentation were deposited.

## 7 Map analysis [i](#)

This section contains the results of statistical analysis of the map.

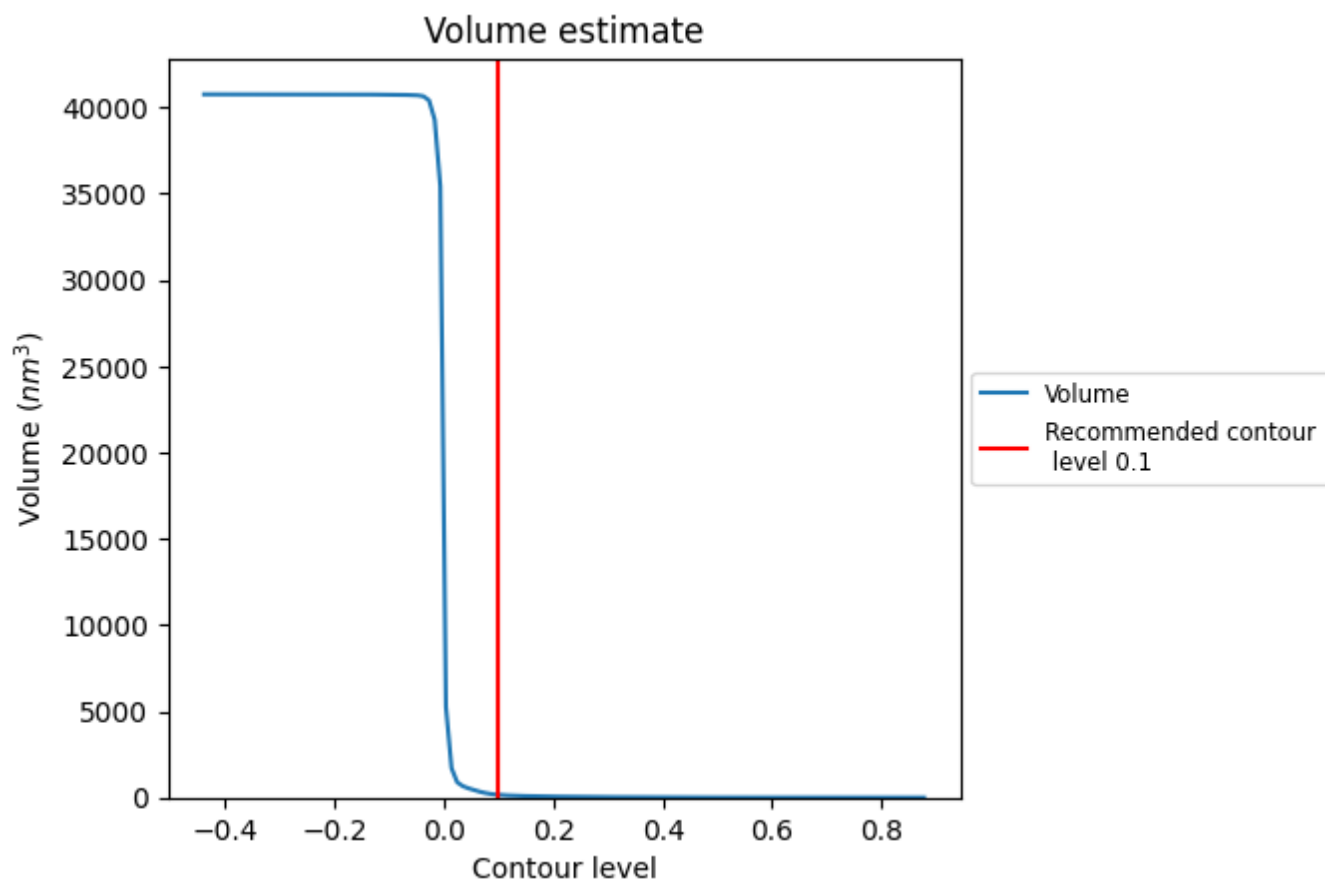
### 7.1 Map-value distribution [i](#)



The map-value distribution is plotted in 128 intervals along the x-axis. The y-axis is logarithmic. A spike in this graph at zero usually indicates that the volume has been masked.



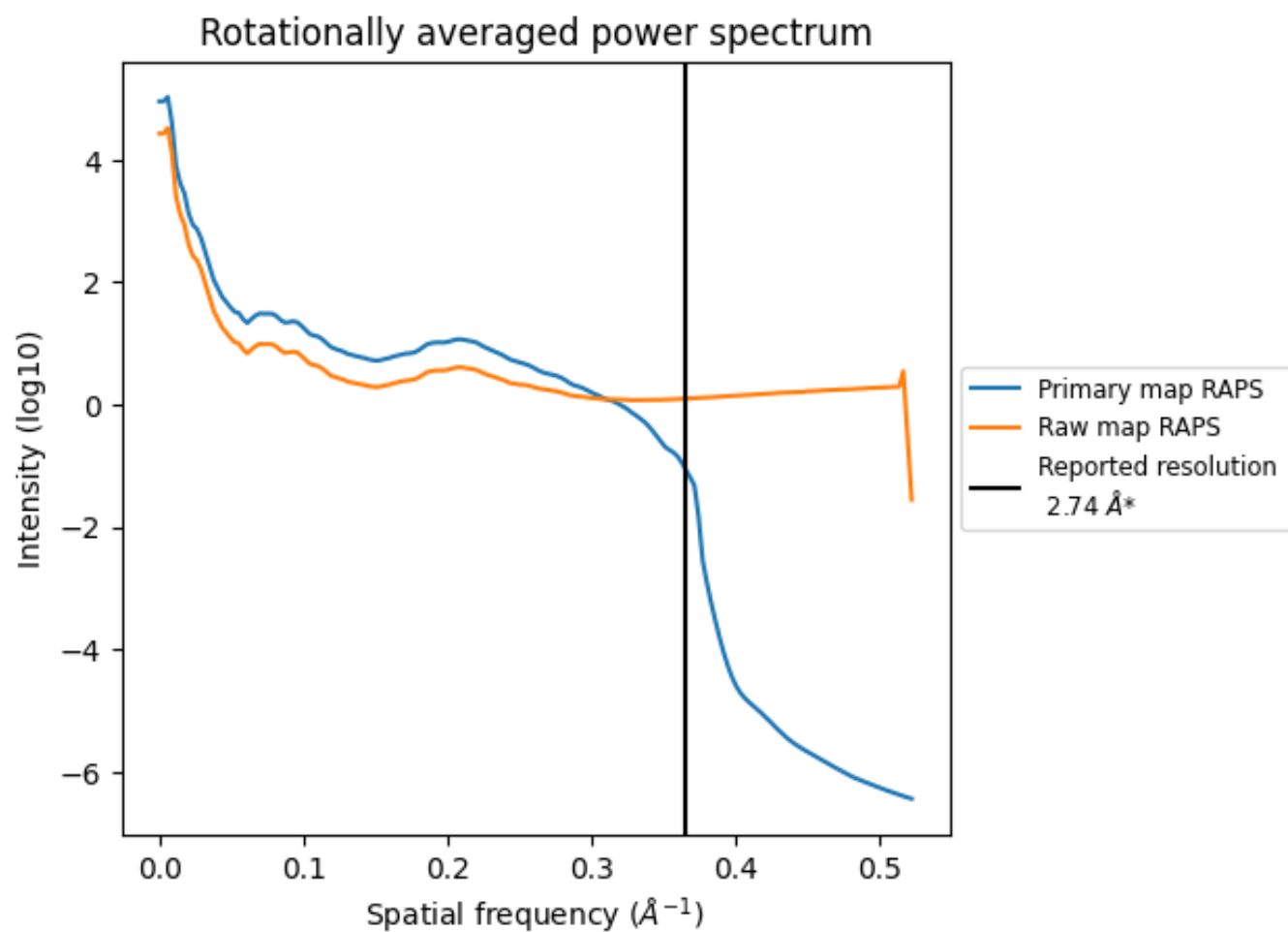
## 7.2 Volume estimate [i](#)



The volume at the recommended contour level is 158  $\text{nm}^3$ ; this corresponds to an approximate mass of 142 kDa.

The volume estimate graph shows how the enclosed volume varies with the contour level. The recommended contour level is shown as a vertical line and the intersection between the line and the curve gives the volume of the enclosed surface at the given level.

### 7.3 Rotationally averaged power spectrum ⓘ

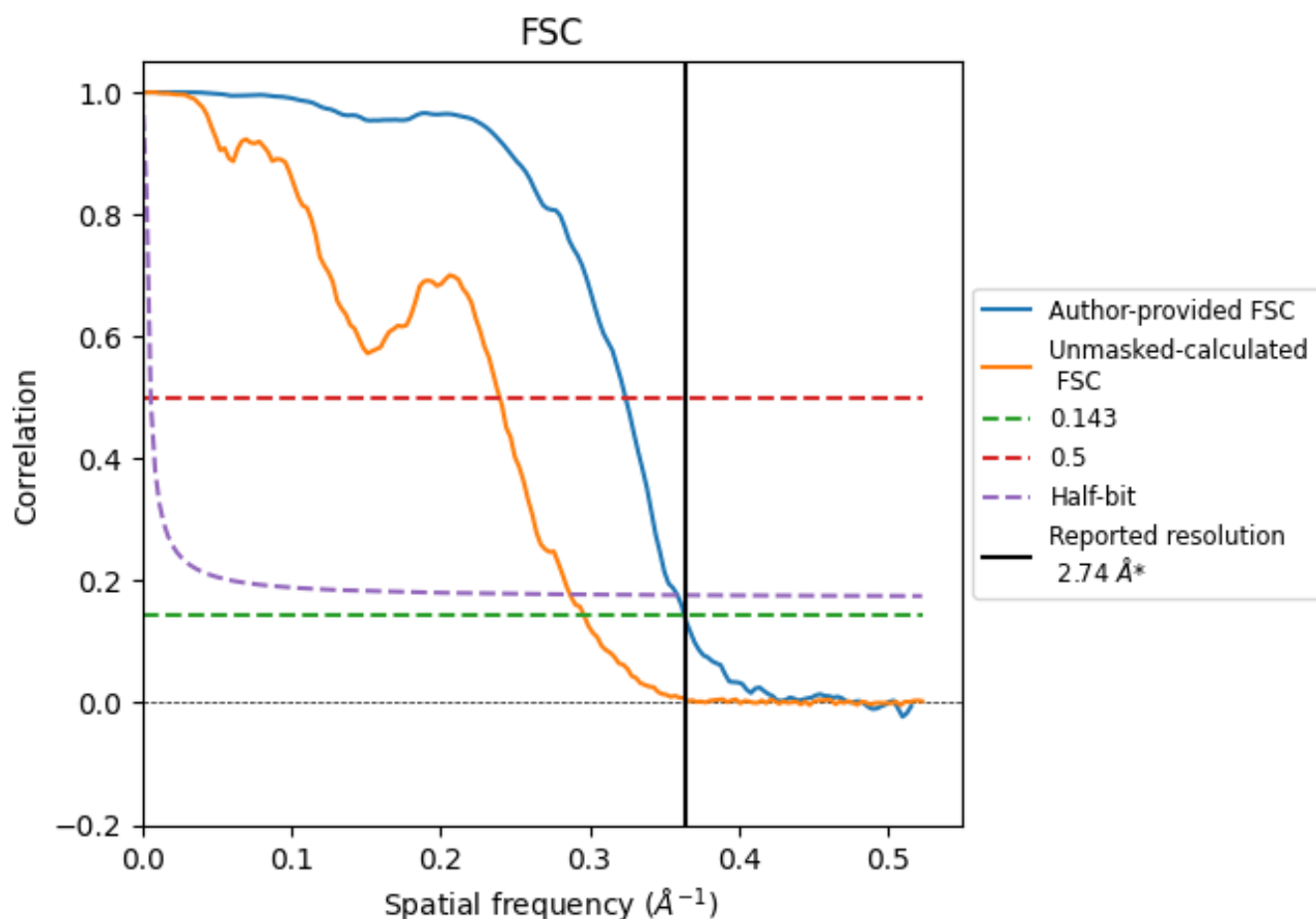


\*Reported resolution corresponds to spatial frequency of 0.365 Å<sup>-1</sup>

## 8 Fourier-Shell correlation [i](#)

Fourier-Shell Correlation (FSC) is the most commonly used method to estimate the resolution of single-particle and subtomogram-averaged maps. The shape of the curve depends on the imposed symmetry, mask and whether or not the two 3D reconstructions used were processed from a common reference. The reported resolution is shown as a black line. A curve is displayed for the half-bit criterion in addition to lines showing the 0.143 gold standard cut-off and 0.5 cut-off.

### 8.1 FSC [i](#)



\*Reported resolution corresponds to spatial frequency of 0.365  $\text{\AA}^{-1}$

## 8.2 Resolution estimates [i](#)

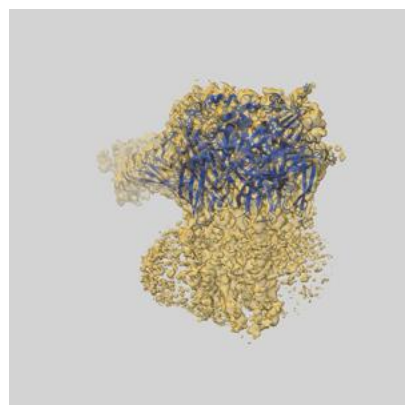
Resolution estimate (Å)	Estimation criterion (FSC cut-off)		
	0.143	0.5	Half-bit
Reported by author	2.74	-	-
Author-provided FSC curve	2.75	3.09	2.79
Unmasked-calculated*	3.38	4.17	3.49

\*Resolution estimate based on FSC curve calculated by comparison of deposited half-maps. The value from deposited half-maps intersecting FSC 0.143 CUT-OFF 3.38 differs from the reported value 2.74 by more than 10 %

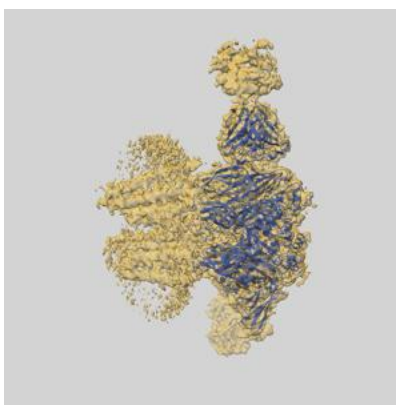
## 9 Map-model fit [i](#)

This section contains information regarding the fit between EMDB map EMD-70873 and PDB model 9OUN. Per-residue inclusion information can be found in [section 3](#) on [page 8](#).

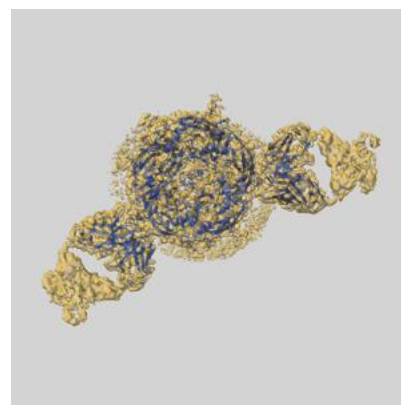
### 9.1 Map-model overlay [i](#)



X



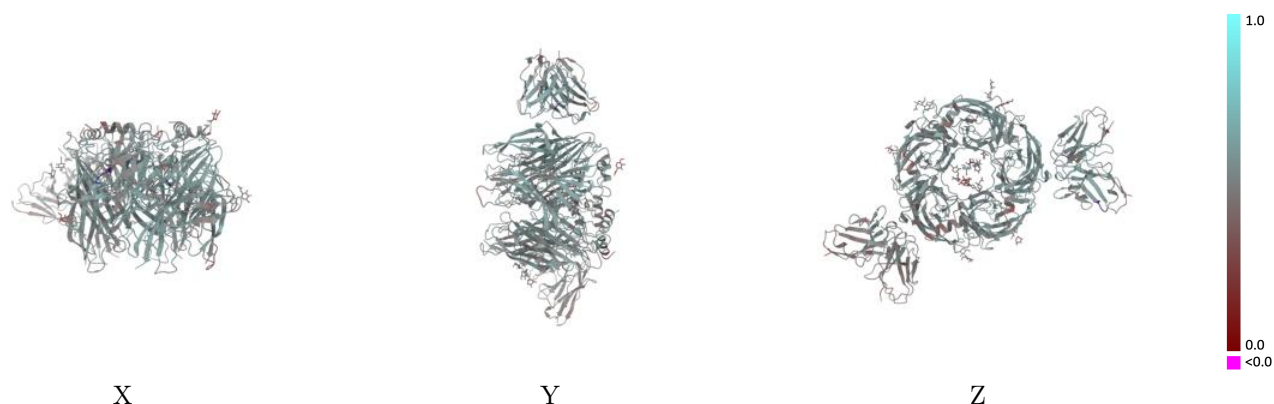
Y



Z

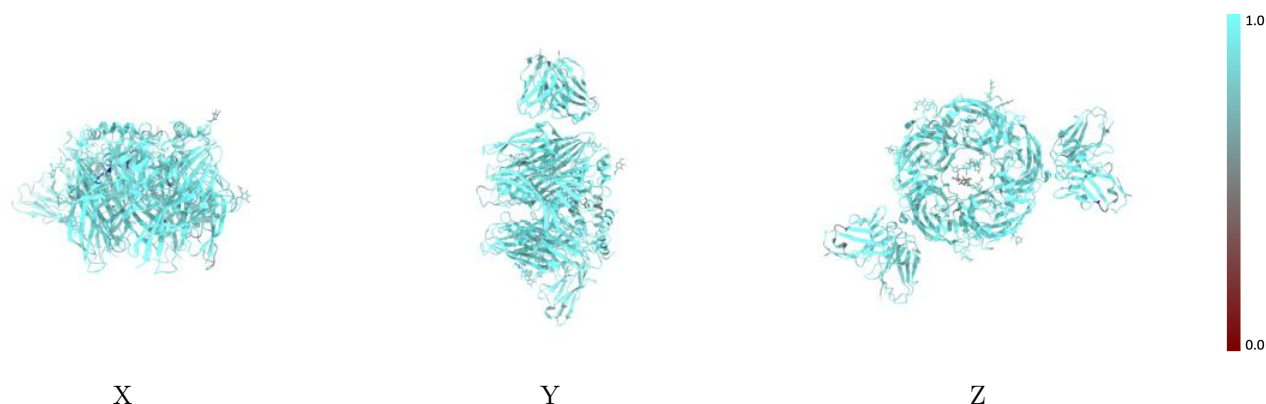
The images above show the 3D surface view of the map at the recommended contour level 0.1 at 50% transparency in yellow overlaid with a ribbon representation of the model coloured in blue. These images allow for the visual assessment of the quality of fit between the atomic model and the map.

## 9.2 Q-score mapped to coordinate model [i](#)



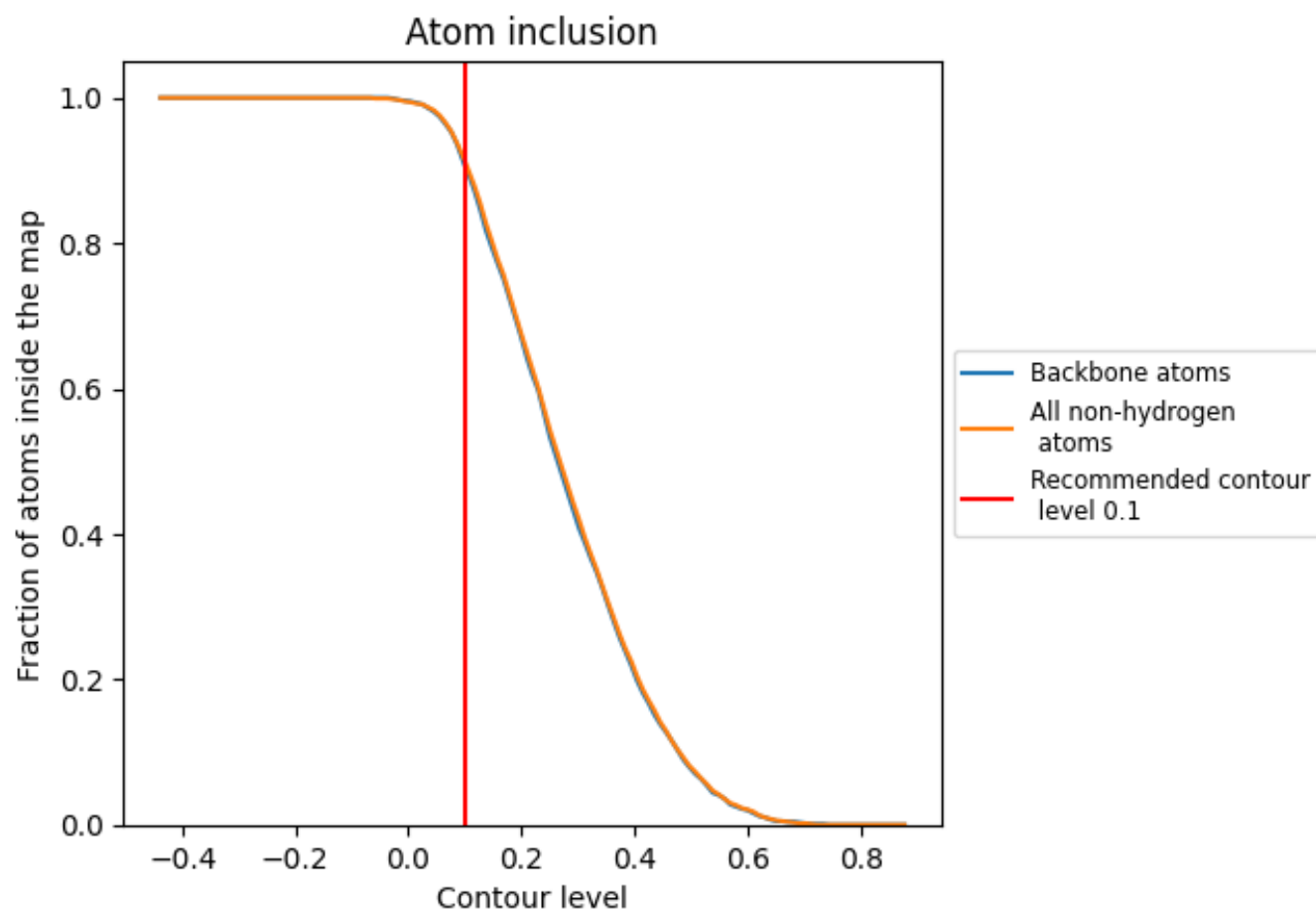
The images above show the model with each residue coloured according its Q-score. This shows their resolvability in the map with higher Q-score values reflecting better resolvability. Please note: Q-score is calculating the resolvability of atoms, and thus high values are only expected at resolutions at which atoms can be resolved. Low Q-score values may therefore be expected for many entries.

## 9.3 Atom inclusion mapped to coordinate model [i](#)



The images above show the model with each residue coloured according to its atom inclusion. This shows to what extent they are inside the map at the recommended contour level (0.1).



































## 9.4 Atom inclusion [i](#)



At the recommended contour level, 91% of all backbone atoms, 91% of all non-hydrogen atoms, are inside the map.

## 9.5 Map-model fit summary ⓘ

The table lists the average atom inclusion at the recommended contour level (0.1) and Q-score for the entire model and for each chain.

Chain	Atom inclusion	Q-score
All	 0.9130	 0.5160
A	 0.9140	 0.5160
B	 0.9190	 0.5220
C	 0.9400	 0.5490
D	 0.9230	 0.5280
E	 0.9230	 0.5220
F	 0.8570	 0.4500
G	 0.8680	 0.4440
H	 0.9000	 0.4670
I	 0.8210	 0.4410
J	 0.8960	 0.5200
K	 0.9060	 0.5320
L	 0.8830	 0.4560
M	 0.8570	 0.4450
N	 0.6720	 0.3650
O	 0.8210	 0.4500
P	 0.9230	 0.4250

