



Full wwPDB X-ray Structure Validation Report ⓘ

Apr 27, 2026 – 04:11 PM EDT

PDB ID : 9OBB / pdb_00009obb
Title : Crystal structure of dihydroorotate dehydrogenase from Leishmania brasiliensis in complex with 5-[(E)-3-(p-methoxyphenyl)-2-propenylidene]-2,4,6(1H,3H,5H)-pyrimidinetrione
Authors : Vaidergorn, M.M.; Nonato, M.C.; Froes, T.Q.; Augusto, B.S.
Deposited on : 2025-04-22
Resolution : 2.32 Å(reported)

This is a Full wwPDB X-ray Structure Validation Report for a publicly released PDB entry.

We welcome your comments at validation@mail.wwpdb.org

A user guide is available at

<https://www.wwpdb.org/validation/2017/XrayValidationReportHelp>

with specific help available everywhere you see the ⓘ symbol.

The types of validation reports are described at

<http://www.wwpdb.org/validation/2017/FAQs#types>.

The following versions of software and data (see [references ⓘ](#)) were used in the production of this report:

MolProbity	:	4-5-2 with Phenix2.0
Mogul	:	2022.3.0, CSD as543be (2022)
Xtriage (Phenix)	:	2.0
EDS	:	3.0
Buster-report	:	wwPDB partial adaption of 1.1.7 (2018)
Percentile statistics	:	20250101.v01 (using entries in the PDB archive January 1st 2025)
CCP4	:	9.0.010 (Gargrove)
Density-Fitness	:	1.0.12
Ideal geometry (proteins)	:	Engh & Huber (2001)
Ideal geometry (DNA, RNA)	:	Parkinson et al. (1996)
Validation Pipeline (wwPDB-VP)	:	2.49

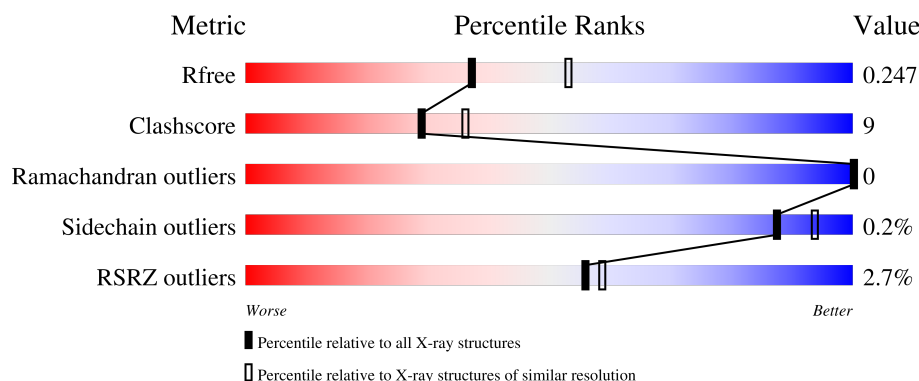
1 Overall quality at a glance

The following experimental techniques were used to determine the structure:

X-RAY DIFFRACTION

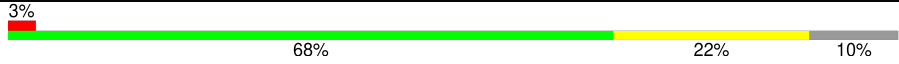

The reported resolution of this entry is 2.32 Å.

Percentile scores (ranging between 0-100) for global validation metrics of the entry are shown in the following graphic. The table shows the number of entries on which the scores are based.



Metric	Whole archive (#Entries)	Similar resolution (#Entries, resolution range(Å))
R_{free}	180053	7754 (2.34-2.30)
Clashscore	190562	8383 (2.34-2.30)
Ramachandran outliers	187476	8303 (2.34-2.30)
Sidechain outliers	187428	8303 (2.34-2.30)
RSRZ outliers	180081	7760 (2.34-2.30)

The table below summarises the geometric issues observed across the polymeric chains and their fit to the electron density. The red, orange, yellow and green segments of the lower bar indicate the fraction of residues that contain outliers for ≥ 3 , 2, 1 and 0 types of geometric quality criteria respectively. A grey segment represents the fraction of residues that are not modelled. The numeric value for each fraction is indicated below the corresponding segment, with a dot representing fractions $\leq 5\%$. The upper red bar (where present) indicates the fraction of residues that have poor fit to the electron density. The numeric value is given above the bar.

Mol	Chain	Length	Quality of chain
1	A	347	
1	B	347	

The following table lists non-polymeric compounds, carbohydrate monomers and non-standard residues in protein, DNA, RNA chains that are outliers for geometric or electron-density-fit criteria:

Mol	Type	Chain	Res	Chirality	Geometry	Clashes	Electron density
3	5TI	B	402	-	X	-	-

2 Entry composition

There are 4 unique types of molecules in this entry. The entry contains 4829 atoms, of which 71 are hydrogens and 0 are deuteriums.

In the tables below, the ZeroOcc column contains the number of atoms modelled with zero occupancy, the AltConf column contains the number of residues with at least one atom in alternate conformation and the Trace column contains the number of residues modelled with at most 2 atoms.

- Molecule 1 is a protein called Dihydroorotate dehydrogenase.

Mol	Chain	Residues	Atoms						ZeroOcc	AltConf	Trace
1	A	311	Total	C	H	N	O	S	0	0	0
			2228	1428	4	368	410	18			
1	B	313	Total	C	H	N	O	S	0	0	0
			2307	1485	3	381	420	18			

There are 68 discrepancies between the modelled and reference sequences:

Chain	Residue	Modelled	Actual	Comment	Reference
A	-33	MET	-	initiating methionine	UNP E9AI53
A	-32	GLY	-	expression tag	UNP E9AI53
A	-31	SER	-	expression tag	UNP E9AI53
A	-30	SER	-	expression tag	UNP E9AI53
A	-29	HIS	-	expression tag	UNP E9AI53
A	-28	HIS	-	expression tag	UNP E9AI53
A	-27	HIS	-	expression tag	UNP E9AI53
A	-26	HIS	-	expression tag	UNP E9AI53
A	-25	HIS	-	expression tag	UNP E9AI53
A	-24	HIS	-	expression tag	UNP E9AI53
A	-23	SER	-	expression tag	UNP E9AI53
A	-22	SER	-	expression tag	UNP E9AI53
A	-21	GLY	-	expression tag	UNP E9AI53
A	-20	LEU	-	expression tag	UNP E9AI53
A	-19	VAL	-	expression tag	UNP E9AI53
A	-18	PRO	-	expression tag	UNP E9AI53
A	-17	ARG	-	expression tag	UNP E9AI53
A	-16	GLY	-	expression tag	UNP E9AI53
A	-15	SER	-	expression tag	UNP E9AI53
A	-14	HIS	-	expression tag	UNP E9AI53
A	-13	MET	-	expression tag	UNP E9AI53
A	-12	ALA	-	expression tag	UNP E9AI53
A	-11	SER	-	expression tag	UNP E9AI53
A	-10	MET	-	expression tag	UNP E9AI53
A	-9	THR	-	expression tag	UNP E9AI53

Continued on next page...

Continued from previous page...

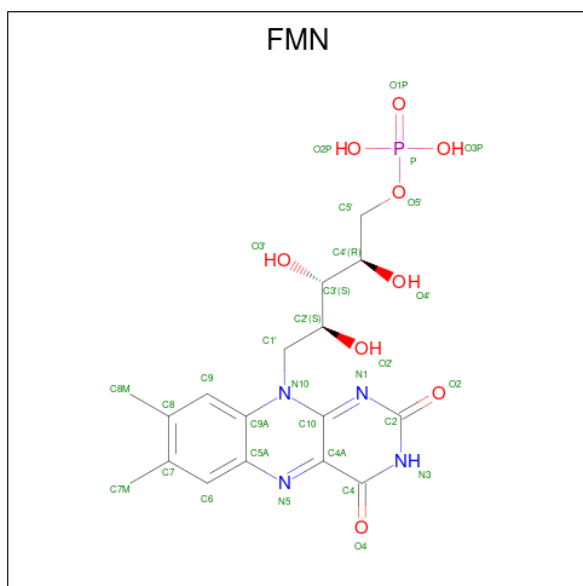
Chain	Residue	Modelled	Actual	Comment	Reference
A	-8	GLY	-	expression tag	UNP E9AI53
A	-7	GLY	-	expression tag	UNP E9AI53
A	-6	GLY	-	expression tag	UNP E9AI53
A	-5	GLN	-	expression tag	UNP E9AI53
A	-4	MET	-	expression tag	UNP E9AI53
A	-3	GLY	-	expression tag	UNP E9AI53
A	-2	ARG	-	expression tag	UNP E9AI53
A	-1	GLY	-	expression tag	UNP E9AI53
A	0	SER	-	expression tag	UNP E9AI53
B	-33	MET	-	initiating methionine	UNP E9AI53
B	-32	GLY	-	expression tag	UNP E9AI53
B	-31	SER	-	expression tag	UNP E9AI53
B	-30	SER	-	expression tag	UNP E9AI53
B	-29	HIS	-	expression tag	UNP E9AI53
B	-28	HIS	-	expression tag	UNP E9AI53
B	-27	HIS	-	expression tag	UNP E9AI53
B	-26	HIS	-	expression tag	UNP E9AI53
B	-25	HIS	-	expression tag	UNP E9AI53
B	-24	HIS	-	expression tag	UNP E9AI53
B	-23	SER	-	expression tag	UNP E9AI53
B	-22	SER	-	expression tag	UNP E9AI53
B	-21	GLY	-	expression tag	UNP E9AI53
B	-20	LEU	-	expression tag	UNP E9AI53
B	-19	VAL	-	expression tag	UNP E9AI53
B	-18	PRO	-	expression tag	UNP E9AI53
B	-17	ARG	-	expression tag	UNP E9AI53
B	-16	GLY	-	expression tag	UNP E9AI53
B	-15	SER	-	expression tag	UNP E9AI53
B	-14	HIS	-	expression tag	UNP E9AI53
B	-13	MET	-	expression tag	UNP E9AI53
B	-12	ALA	-	expression tag	UNP E9AI53
B	-11	SER	-	expression tag	UNP E9AI53
B	-10	MET	-	expression tag	UNP E9AI53
B	-9	THR	-	expression tag	UNP E9AI53
B	-8	GLY	-	expression tag	UNP E9AI53
B	-7	GLY	-	expression tag	UNP E9AI53
B	-6	GLY	-	expression tag	UNP E9AI53
B	-5	GLN	-	expression tag	UNP E9AI53
B	-4	MET	-	expression tag	UNP E9AI53
B	-3	GLY	-	expression tag	UNP E9AI53
B	-2	ARG	-	expression tag	UNP E9AI53
B	-1	GLY	-	expression tag	UNP E9AI53

Continued on next page...

Continued from previous page...

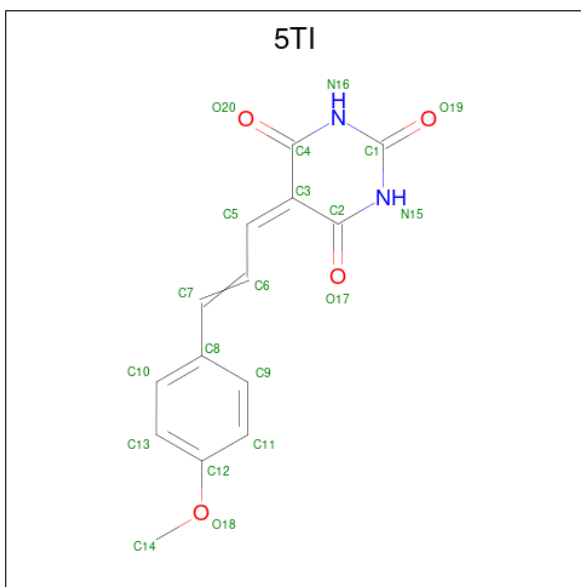
Chain	Residue	Modelled	Actual	Comment	Reference
B	0	SER	-	expression tag	UNP E9AI53

- Molecule 2 is FLAVIN MONONUCLEOTIDE (CCD ID: FMN) (formula: $C_{17}H_{21}N_4O_9P$).



Mol	Chain	Residues	Atoms						ZeroOcc	AltConf
2	A	1	Total 50	C 17	H 19	N 4	O 9	P 1	0	0
2	B	1	Total 50	C 17	H 19	N 4	O 9	P 1	0	0

- Molecule 3 is 5-[3-(4-methoxyphenyl)prop-2-enylidene]-1,3-diazinane-2,4,6-trione (CCD ID: 5TI) (formula: C₁₄H₁₂N₂O₄) (labeled as "Ligand of Interest" by depositor).



Mol	Chain	Residues	Atoms					ZeroOcc	AltConf
3	A	1	Total	C	H	N	O	0	0
			33	14	13	2	4		
3	B	1	Total	C	H	N	O	1	0
			33	14	13	2	4		

- Molecule 4 is water.

Mol	Chain	Residues	Atoms		ZeroOcc	AltConf
4	A	41	Total	O	0	0
			41	41		
4	B	87	Total	O	0	0
			87	87		

- Molecule 1: Dihydroorotate dehydrogenase



4 Data and refinement statistics

Property	Value	Source
Space group	P 21 21 21	Depositor
Cell constants a, b, c, α , β , γ	61.64Å 104.59Å 106.61Å 90.00° 90.00° 90.00°	Depositor
Resolution (Å)	47.54 – 2.32 47.54 – 2.32	Depositor EDS
% Data completeness (in resolution range)	99.8 (47.54-2.32) 99.9 (47.54-2.32)	Depositor EDS
R_{merge}	(Not available)	Depositor
R_{sym}	(Not available)	Depositor
$\langle I/\sigma(I) \rangle$ ¹	1.25 (at 2.32Å)	Xtriage
Refinement program	PHENIX 1.20.1_4487	Depositor
R, R_{free}	0.194 , 0.245 0.196 , 0.247	Depositor DCC
R_{free} test set	1998 reflections (6.52%)	wwPDB-VP
Wilson B-factor (Å ²)	43.7	Xtriage
Anisotropy	0.153	Xtriage
Bulk solvent k_{sol} (e/Å ³), B_{sol} (Å ²)	0.36 , 35.5	EDS
L-test for twinning ²	$\langle L \rangle = 0.50$, $\langle L^2 \rangle = 0.33$	Xtriage
Estimated twinning fraction	0.015 for -h,l,k	Xtriage
F_o, F_c correlation	0.95	EDS
Total number of atoms	4829	wwPDB-VP
Average B, all atoms (Å ²)	45.0	wwPDB-VP

Xtriage's analysis on translational NCS is as follows: *The largest off-origin peak in the Patterson function is 6.07% of the height of the origin peak. No significant pseudotranslation is detected.*

¹Intensities estimated from amplitudes.

²Theoretical values of $\langle |L| \rangle$, $\langle L^2 \rangle$ for acentric reflections are 0.5, 0.333 respectively for untwinned datasets, and 0.375, 0.2 for perfectly twinned datasets.

5 Model quality [i](#)

5.1 Standard geometry [i](#)

Bond lengths and bond angles in the following residue types are not validated in this section: 5TI, FMN

The Z score for a bond length (or angle) is the number of standard deviations the observed value is removed from the expected value. A bond length (or angle) with $|Z| > 5$ is considered an outlier worth inspection. RMSZ is the root-mean-square of all Z scores of the bond lengths (or angles).

Mol	Chain	Bond lengths		Bond angles	
		RMSZ	$\# Z > 5$	RMSZ	$\# Z > 5$
1	A	0.36	0/2280	0.49	2/3094 (0.1%)
1	B	0.41	0/2361	0.54	0/3203
All	All	0.39	0/4641	0.51	2/6297 (0.0%)

There are no bond length outliers.

All (2) bond angle outliers are listed below:

Mol	Chain	Res	Type	Atoms	Z	Observed(°)	Ideal(°)
1	A	193	CYS	CA-C-N	5.22	131.09	121.70
1	A	193	CYS	C-N-CA	5.22	131.09	121.70

There are no chirality outliers.

There are no planarity outliers.

5.2 Too-close contacts [i](#)

In the following table, the Non-H and H(model) columns list the number of non-hydrogen atoms and hydrogen atoms in the chain respectively. The H(added) column lists the number of hydrogen atoms added and optimized by MolProbity. The Clashes column lists the number of clashes within the asymmetric unit, whereas Symm-Clashes lists symmetry-related clashes.

Mol	Chain	Non-H	H(model)	H(added)	Clashes	Symm-Clashes
1	A	2224	4	2043	48	0
1	B	2304	3	2230	35	0
2	A	31	19	19	1	0
2	B	31	19	19	1	0
3	A	20	13	0	1	0
3	B	20	13	0	0	0
4	A	41	0	0	0	0

Continued on next page...

Continued from previous page...

Mol	Chain	Non-H	H(model)	H(added)	Clashes	Symm-Clashes
4	B	87	0	0	0	0
All	All	4758	71	4311	78	0

The all-atom clashscore is defined as the number of clashes found per 1000 atoms (including hydrogen atoms). The all-atom clashscore for this structure is 9.

All (78) close contacts within the same asymmetric unit are listed below, sorted by their clash magnitude.

Atom-1	Atom-2	Interatomic distance (Å)	Clash overlap (Å)
1:A:1:MET:HE3	1:A:291:LEU:HD22	1.63	0.81
1:A:297:LYS:HE3	1:B:208:GLU:OE2	1.82	0.80
1:B:81:LEU:HD11	1:B:117:VAL:HG21	1.72	0.72
1:A:21:GLY:HA3	2:A:401:FMN:N5	2.07	0.69
1:B:21:GLY:HA3	2:B:401:FMN:N5	2.10	0.67
1:A:312:MET:HE3	1:B:210:VAL:O	1.97	0.64
1:B:14:ASN:HB2	1:B:15:PRO:HD2	1.80	0.63
1:A:106:GLU:O	1:A:110:MET:HG3	2.00	0.61
1:A:227:PHE:HB3	1:A:228:PRO:HD3	1.83	0.61
1:A:14:ASN:HB2	1:A:15:PRO:HD2	1.83	0.60
1:B:45:SER:HB3	1:B:100:SER:HB2	1.83	0.60
1:B:227:PHE:HB3	1:B:228:PRO:HD3	1.84	0.60
1:B:83:TYR:CE2	1:B:88:HIS:HB2	2.37	0.59
1:A:276:HIS:O	1:A:276:HIS:ND1	2.36	0.59
1:A:260:LEU:HD21	1:B:205:VAL:HG22	1.86	0.58
1:A:62:LEU:HB3	1:A:63:PRO:HD2	1.86	0.57
1:B:102:PHE:CD1	1:B:132:PRO:HG3	2.39	0.57
1:A:83:TYR:CE2	1:A:88:HIS:HB2	2.40	0.56
1:B:236:ALA:O	1:B:240:ARG:HD2	2.05	0.56
1:B:144:PHE:HB3	1:B:181:ILE:HD11	1.86	0.56
1:A:130:SER:HB3	1:A:139:GLN:NE2	2.20	0.56
1:A:3:LEU:O	1:A:14:ASN:HA	2.06	0.55
1:A:194:ILE:HG13	1:A:195:ASN:O	2.07	0.55
1:A:301:ALA:O	1:A:304:GLU:HB2	2.07	0.54
1:A:113:ARG:O	1:A:116:PRO:HD2	2.07	0.54
1:A:155:SER:O	1:A:187:LYS:NZ	2.39	0.53
1:A:83:TYR:CZ	1:A:88:HIS:HB2	2.44	0.52
1:B:194:ILE:HD12	1:B:195:ASN:O	2.09	0.52
1:A:64:LEU:HB2	1:A:225:TYR:CZ	2.46	0.51
1:A:118:ALA:HA	1:A:123:VAL:HG12	1.93	0.51
1:A:158:TYR:CE2	1:A:160:HIS:HB2	2.48	0.49
1:A:55:PRO:HD2	1:A:214:PRO:HG3	1.94	0.49

Continued on next page...

Continued from previous page...

Atom-1	Atom-2	Interatomic distance (Å)	Clash overlap (Å)
1:A:141:ALA:HB3	1:A:167:PRO:HG3	1.94	0.49
1:B:1:MET:HE3	1:B:291:LEU:HD22	1.95	0.49
1:B:141:ALA:HB3	1:B:167:PRO:HG3	1.94	0.49
1:A:161:PRO:HB3	1:A:189:GLN:NE2	2.28	0.49
1:A:43:THR:HG23	1:A:96:PHE:O	2.13	0.48
1:A:130:SER:HB3	1:A:139:GLN:HE21	1.78	0.48
1:B:150:TYR:O	1:B:154:ILE:HG12	2.13	0.48
1:A:58:ARG:O	1:A:68:ASN:HA	2.14	0.47
1:A:23:MET:HE1	1:A:279:GLY:HA2	1.96	0.47
1:A:169:TYR:HB2	1:A:175:PHE:CE1	2.49	0.47
1:A:163:GLY:HA3	1:A:190:PHE:CE1	2.50	0.46
1:A:115:ALA:HB3	1:A:116:PRO:HD3	1.98	0.46
1:B:12:PHE:CD2	1:B:268:MET:HE2	2.50	0.46
1:B:81:LEU:HD11	1:B:117:VAL:CG2	2.44	0.46
1:B:289:GLU:O	1:B:293:VAL:HG23	2.16	0.46
1:A:175:PHE:HE1	1:A:233:ASN:OD1	1.98	0.45
1:A:21:GLY:HA2	1:A:44:LYS:HD2	1.99	0.45
1:B:12:PHE:CD2	1:B:268:MET:CE	3.00	0.45
1:B:130:SER:O	1:B:139:GLN:HB2	2.17	0.45
1:A:200:GLY:O	1:A:218:PHE:HA	2.17	0.44
1:A:201:LEU:HB2	1:B:232:ALA:HB2	2.00	0.44
1:B:21:GLY:HA2	1:B:44:LYS:HD2	2.00	0.44
1:B:113:ARG:O	1:B:116:PRO:HD2	2.17	0.44
1:A:41:LEU:HD21	1:A:88:HIS:CE1	2.53	0.44
1:A:208:GLU:HB3	1:B:263:LEU:HD21	1.99	0.43
1:B:182:LEU:O	1:B:244:LYS:HE3	2.18	0.43
1:B:102:PHE:CG	1:B:132:PRO:HG3	2.52	0.43
1:B:144:PHE:HB3	1:B:181:ILE:CD1	2.49	0.43
1:A:144:PHE:HB3	1:A:181:ILE:HD11	2.01	0.43
1:B:3:LEU:O	1:B:14:ASN:HA	2.19	0.43
1:B:52:GLU:O	1:B:73:PRO:HB3	2.19	0.43
1:A:56:ALA:HB1	1:A:57:PRO:HA	2.00	0.43
1:A:163:GLY:HA3	1:A:190:PHE:CZ	2.54	0.43
1:A:18:ASN:OD1	1:A:33:MET:HE2	2.18	0.42
1:B:12:PHE:CE2	1:B:94:PRO:HG2	2.54	0.42
1:A:23:MET:HA	1:A:29:GLU:HG2	2.01	0.42
1:B:141:ALA:HB3	1:B:167:PRO:CG	2.49	0.42
1:A:224:ARG:HG2	1:A:253:TYR:CE1	2.54	0.42
1:B:193:CYS:HA	1:B:194:ILE:HA	1.82	0.41
1:B:223:GLY:O	1:B:226:VAL:HG22	2.20	0.41
1:A:47:THR:O	1:A:48:PRO:C	2.63	0.41

Continued on next page...

Continued from previous page...

Atom-1	Atom-2	Interatomic distance (Å)	Clash overlap (Å)
1:B:129:LEU:HD23	1:B:129:LEU:HA	1.88	0.41
1:A:6:GLY:C	1:A:7:ILE:HG23	2.47	0.40
1:A:191:ILE:HD11	1:A:244:LYS:HD2	2.04	0.40
1:A:72:LEU:O	3:A:402:5TI:C14	2.69	0.40
1:A:144:PHE:HB3	1:A:181:ILE:CD1	2.52	0.40

There are no symmetry-related clashes.

5.3 Torsion angles [i](#)

5.3.1 Protein backbone [i](#)

In the following table, the Percentiles column shows the percent Ramachandran outliers of the chain as a percentile score with respect to all X-ray entries followed by that with respect to entries of similar resolution.

The Analysed column shows the number of residues for which the backbone conformation was analysed, and the total number of residues.

Mol	Chain	Analysed	Favoured	Allowed	Outliers	Percentiles	
1	A	307/347 (88%)	293 (95%)	14 (5%)	0	100	100
1	B	311/347 (90%)	298 (96%)	13 (4%)	0	100	100
All	All	618/694 (89%)	591 (96%)	27 (4%)	0	100	100

There are no Ramachandran outliers to report.

5.3.2 Protein sidechains [i](#)

In the following table, the Percentiles column shows the percent sidechain outliers of the chain as a percentile score with respect to all X-ray entries followed by that with respect to entries of similar resolution.

The Analysed column shows the number of residues for which the sidechain conformation was analysed, and the total number of residues.

Mol	Chain	Analysed	Rotameric	Outliers	Percentiles	
1	A	208/273 (76%)	208 (100%)	0	100	100
1	B	228/273 (84%)	227 (100%)	1 (0%)	84	91
All	All	436/546 (80%)	435 (100%)	1 (0%)	87	94

All (1) residues with a non-rotameric sidechain are listed below:

Mol	Chain	Res	Type
1	B	131	CYS

Sometimes sidechains can be flipped to improve hydrogen bonding and reduce clashes. All (2) such sidechains are listed below:

Mol	Chain	Res	Type
1	A	139	GLN
1	A	189	GLN

5.3.3 RNA ⓘ

There are no RNA molecules in this entry.

5.4 Non-standard residues in protein, DNA, RNA chains ⓘ

There are no non-standard protein/DNA/RNA residues in this entry.

5.5 Carbohydrates ⓘ

There are no oligosaccharides in this entry.

5.6 Ligand geometry ⓘ

4 ligands are modelled in this entry.

In the following table, the Counts columns list the number of bonds (or angles) for which Mogul statistics could be retrieved, the number of bonds (or angles) that are observed in the model and the number of bonds (or angles) that are defined in the Chemical Component Dictionary. The Link column lists molecule types, if any, to which the group is linked. The Z score for a bond length (or angle) is the number of standard deviations the observed value is removed from the expected value. A bond length (or angle) with $|Z| > 2$ is considered an outlier worth inspection. RMSZ is the root-mean-square of all Z scores of the bond lengths (or angles).

Mol	Type	Chain	Res	Link	Bond lengths			Bond angles		
					Counts	RMSZ	$\# Z > 2$	Counts	RMSZ	$\# Z > 2$
3	5TI	A	402	1	21,21,21	4.10	10 (47%)	28,28,28	2.59	9 (32%)
2	FMN	B	401	-	33,33,33	1.00	1 (3%)	48,50,50	1.31	5 (10%)
3	5TI	B	402	1	21,21,21	4.27	12 (57%)	28,28,28	2.62	11 (39%)
2	FMN	A	401	-	33,33,33	0.95	1 (3%)	48,50,50	1.28	5 (10%)

In the following table, the Chirals column lists the number of chiral outliers, the number of chiral centers analysed, the number of these observed in the model and the number defined in the Chemical Component Dictionary. Similar counts are reported in the Torsion and Rings columns. '-' means no outliers of that kind were identified.

Mol	Type	Chain	Res	Link	Chirals	Torsions	Rings
3	5TI	A	402	1	-	7/8/24/24	0/2/2/2
2	FMN	B	401	-	-	3/18/18/18	0/3/3/3
3	5TI	B	402	1	-	7/8/24/24	0/2/2/2
2	FMN	A	401	-	-	1/18/18/18	0/3/3/3

All (24) bond length outliers are listed below:

Mol	Chain	Res	Type	Atoms	Z	Observed(Å)	Ideal(Å)
3	A	402	5TI	C6-C7	12.14	1.56	1.34
3	B	402	5TI	C6-C7	10.91	1.54	1.34
3	B	402	5TI	C3-C4	8.63	1.61	1.45
3	A	402	5TI	C3-C4	7.49	1.59	1.45
3	B	402	5TI	C5-C3	7.18	1.56	1.37
3	A	402	5TI	C5-C3	6.95	1.55	1.37
3	B	402	5TI	C8-C7	5.52	1.63	1.47
3	B	402	5TI	C3-C2	5.10	1.54	1.45
3	A	402	5TI	C1-N16	4.81	1.45	1.37
3	B	402	5TI	C1-N16	4.73	1.45	1.37
3	A	402	5TI	C3-C2	4.49	1.53	1.45
2	B	401	FMN	C4A-N5	3.58	1.38	1.30
3	A	402	5TI	C1-N15	3.58	1.43	1.37
2	A	401	FMN	C4A-N5	3.47	1.38	1.30
3	B	402	5TI	C6-C5	-2.99	1.33	1.43
3	B	402	5TI	C1-N15	2.98	1.42	1.37
3	A	402	5TI	C8-C7	2.86	1.55	1.47
3	B	402	5TI	C10-C13	2.69	1.43	1.38
3	A	402	5TI	O17-C2	-2.65	1.18	1.23
3	B	402	5TI	C9-C11	2.61	1.43	1.38
3	A	402	5TI	C6-C5	-2.37	1.35	1.43
3	A	402	5TI	C4-N16	2.25	1.43	1.38
3	B	402	5TI	C13-C12	2.16	1.42	1.38
3	B	402	5TI	C11-C12	2.02	1.42	1.38

All (30) bond angle outliers are listed below:

Mol	Chain	Res	Type	Atoms	Z	Observed(°)	Ideal(°)
3	B	402	5TI	C8-C7-C6	-9.88	110.01	127.11
3	A	402	5TI	C8-C7-C6	-8.90	111.71	127.11

Continued on next page...

Continued from previous page...

Mol	Chain	Res	Type	Atoms	Z	Observed(°)	Ideal(°)
3	A	402	5TI	C2-C3-C4	-4.97	113.95	119.56
3	B	402	5TI	C5-C6-C7	4.00	129.47	122.23
3	A	402	5TI	C5-C6-C7	3.89	129.26	122.23
2	A	401	FMN	C4A-C10-N10	3.37	121.30	116.48
3	A	402	5TI	O17-C2-C3	-3.33	118.64	125.98
2	B	401	FMN	C4A-C10-N10	3.25	121.14	116.48
3	A	402	5TI	C3-C2-N15	3.14	119.94	114.45
2	B	401	FMN	C4-N3-C2	-3.12	120.10	125.64
3	B	402	5TI	C13-C12-C11	-3.03	115.74	120.16
3	B	402	5TI	C9-C8-C10	-2.97	113.26	117.65
2	B	401	FMN	C5A-C9A-N10	2.95	120.64	117.97
3	A	402	5TI	C5-C3-C4	-2.91	112.42	120.14
3	B	402	5TI	C5-C3-C4	-2.90	112.46	120.14
3	A	402	5TI	C6-C5-C3	-2.87	123.05	128.54
2	A	401	FMN	C4-N3-C2	-2.69	120.87	125.64
2	B	401	FMN	O4-C4-C4A	-2.56	119.78	126.53
3	B	402	5TI	C2-C3-C4	-2.55	116.69	119.56
3	B	402	5TI	C13-C10-C8	2.55	124.51	121.22
3	B	402	5TI	O17-C2-C3	-2.54	120.38	125.98
2	A	401	FMN	C4'-C3'-C2'	-2.53	109.36	113.57
2	B	401	FMN	C4A-C4-N3	2.50	119.61	113.25
3	B	402	5TI	C14-O18-C12	2.42	122.69	117.50
2	A	401	FMN	C10-C4A-N5	-2.39	119.94	124.81
3	A	402	5TI	O20-C4-C3	-2.36	120.77	125.98
3	B	402	5TI	C6-C5-C3	-2.35	124.04	128.54
2	A	401	FMN	C4A-C4-N3	2.25	118.97	113.25
3	A	402	5TI	C13-C12-C11	-2.23	116.91	120.16
3	B	402	5TI	C9-C11-C12	2.09	122.12	119.73

There are no chirality outliers.

All (18) torsion outliers are listed below:

Mol	Chain	Res	Type	Atoms
3	A	402	5TI	C4-C3-C5-C6
3	A	402	5TI	C2-C3-C5-C6
3	A	402	5TI	C5-C6-C7-C8
3	B	402	5TI	C4-C3-C5-C6
3	B	402	5TI	C2-C3-C5-C6
3	B	402	5TI	C5-C6-C7-C8
3	A	402	5TI	C11-C12-O18-C14
3	A	402	5TI	C6-C7-C8-C10
3	B	402	5TI	C6-C7-C8-C10

Continued on next page...

Continued from previous page...

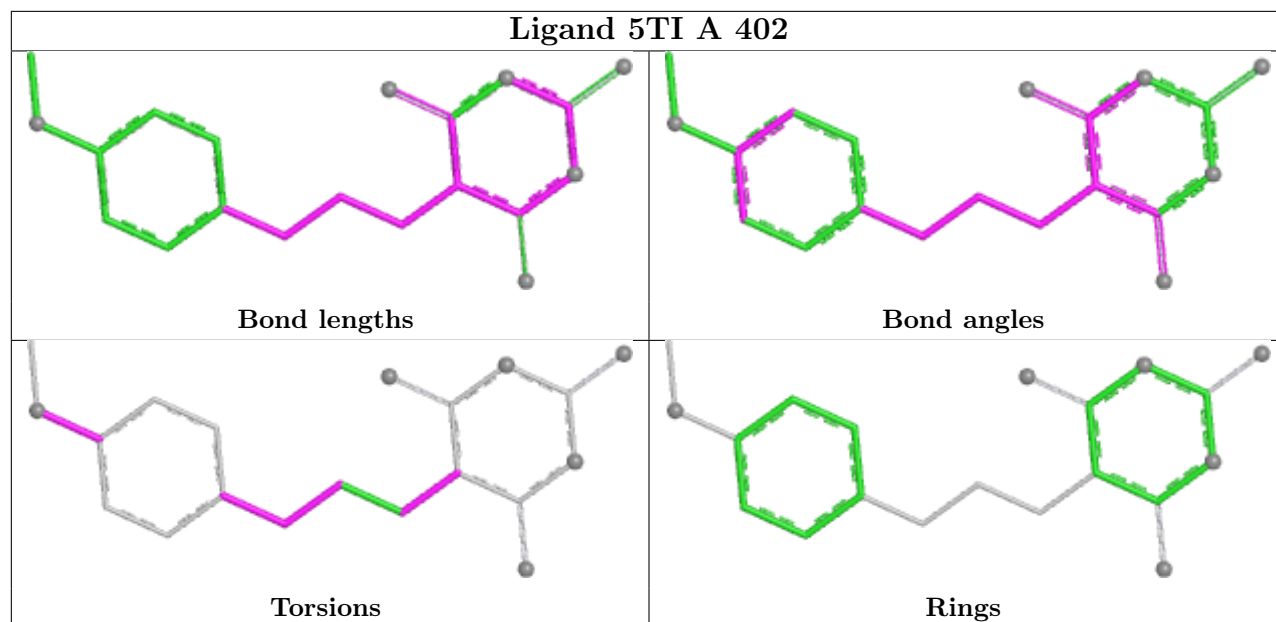
Mol	Chain	Res	Type	Atoms
3	A	402	5TI	C13-C12-O18-C14
3	B	402	5TI	C6-C7-C8-C9
3	A	402	5TI	C6-C7-C8-C9
3	B	402	5TI	C13-C12-O18-C14
3	B	402	5TI	C11-C12-O18-C14
2	B	401	FMN	C4'-C5'-O5'-P
2	A	401	FMN	C4'-C5'-O5'-P
2	B	401	FMN	O3'-C3'-C4'-C5'
2	B	401	FMN	O3'-C3'-C4'-O4'

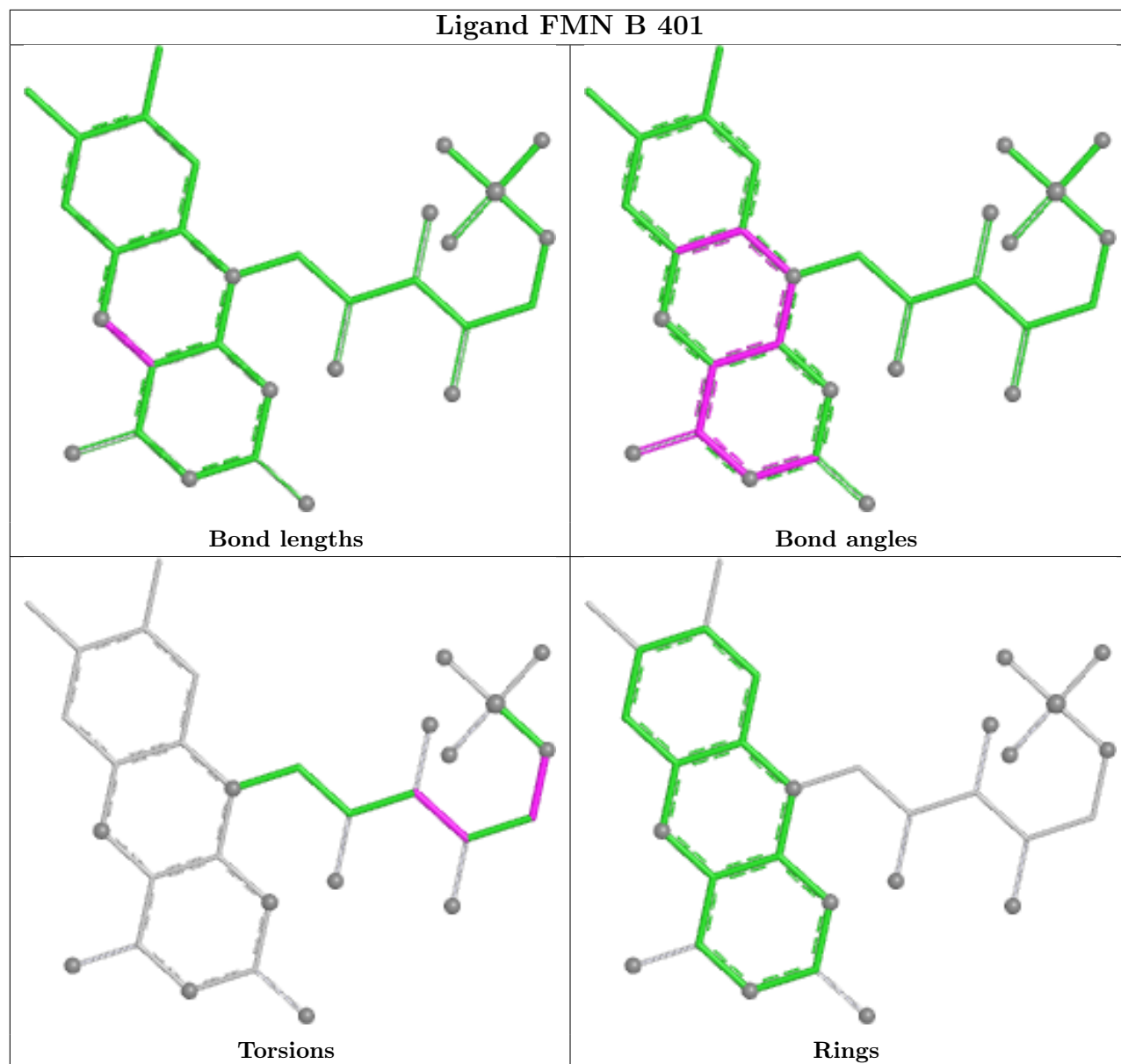
There are no ring outliers.

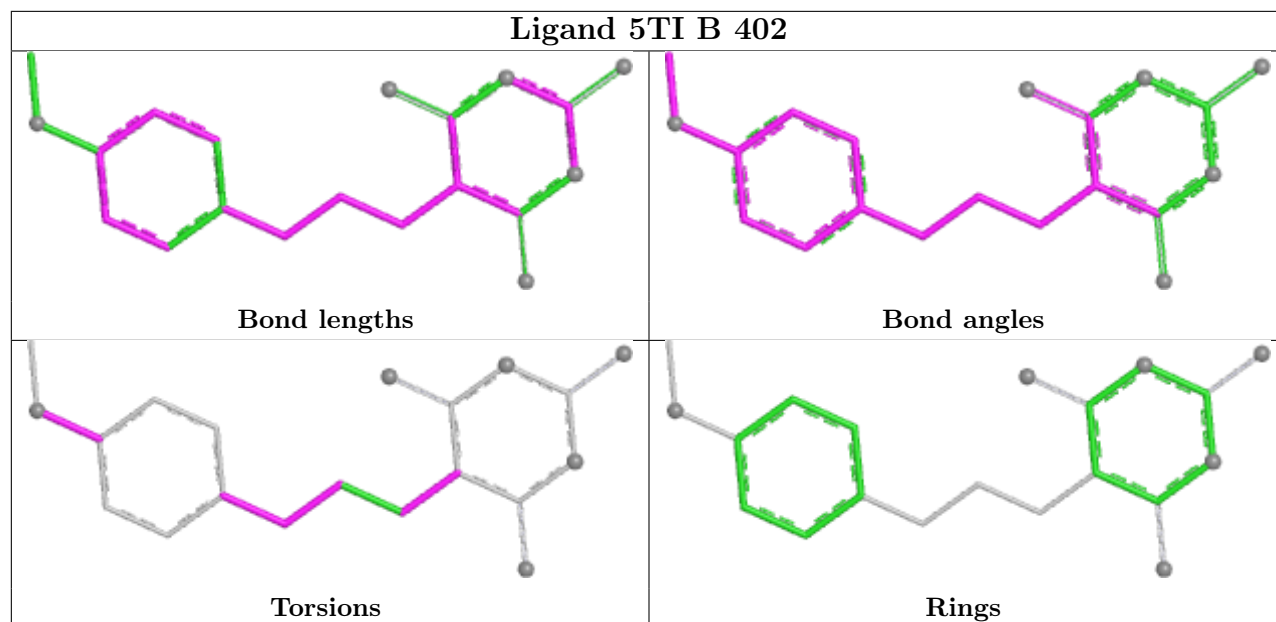
3 monomers are involved in 3 short contacts:

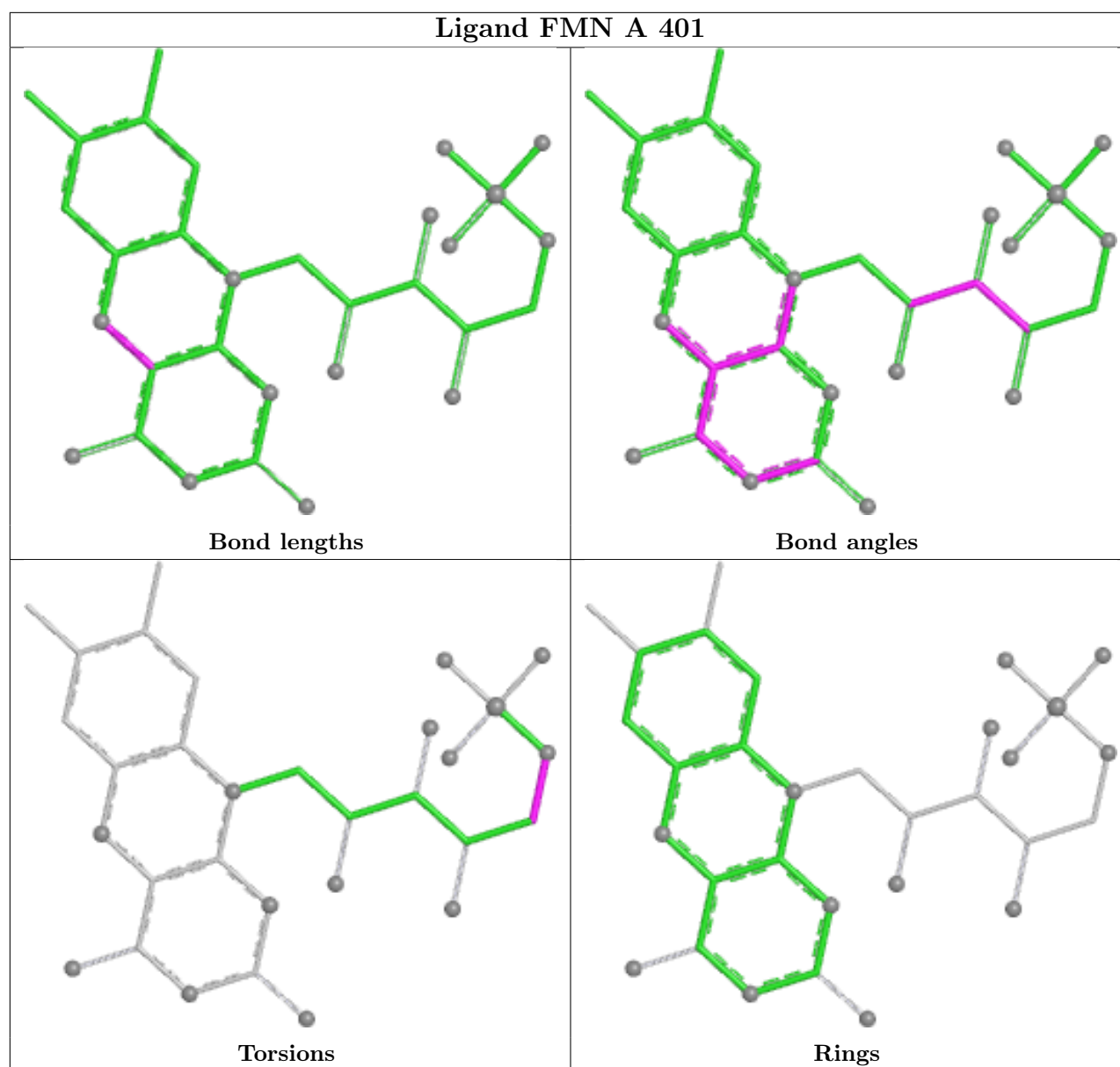
Mol	Chain	Res	Type	Clashes	Symm-Clashes
3	A	402	5TI	1	0
2	B	401	FMN	1	0
2	A	401	FMN	1	0

The following is a two-dimensional graphical depiction of Mogul quality analysis of bond lengths, bond angles, torsion angles, and ring geometry for all instances of the Ligand of Interest. In addition, ligands with molecular weight > 250 and outliers as shown on the validation Tables will also be included. For torsion angles, if less than 5% of the Mogul distribution of torsion angles is within 10 degrees of the torsion angle in question, then that torsion angle is considered an outlier. Any bond that is central to one or more torsion angles identified as an outlier by Mogul will be highlighted in the graph. For rings, the root-mean-square deviation (RMSD) between the ring in question and similar rings identified by Mogul is calculated over all ring torsion angles. If the average RMSD is greater than 60 degrees and the minimal RMSD between the ring in question and any Mogul-identified rings is also greater than 60 degrees, then that ring is considered an outlier. The outliers are highlighted in purple. The color gray indicates Mogul did not find sufficient equivalents in the CSD to analyse the geometry.









5.7 Other polymers [i](#)

There are no such residues in this entry.

5.8 Polymer linkage issues [i](#)

There are no chain breaks in this entry.

6 Fit of model and data [i](#)

6.1 Protein, DNA and RNA chains [i](#)

In the following table, the column labelled ‘#RSRZ > 2’ contains the number (and percentage) of RSRZ outliers, followed by percent RSRZ outliers for the chain as percentile scores relative to all X-ray entries and entries of similar resolution. The OWAB column contains the minimum, median, 95th percentile and maximum values of the occupancy-weighted average B-factor per residue. The column labelled ‘Q < 0.9’ lists the number of (and percentage) of residues with an average occupancy less than 0.9.

Mol	Chain	Analysed	<RSRZ>	#RSRZ>2	OWAB(Å ²)	Q<0.9
1	A	311/347 (89%)	0.38	10 (3%) 50 53	37, 48, 65, 78	8 (2%)
1	B	313/347 (90%)	-0.03	7 (2%) 62 65	31, 40, 53, 75	7 (2%)
All	All	624/694 (89%)	0.17	17 (2%) 56 59	31, 44, 63, 78	15 (2%)

All (17) RSRZ outliers are listed below:

Mol	Chain	Res	Type	RSRZ
1	A	132	PRO	5.4
1	A	135	PRO	4.8
1	B	133	ASN	3.6
1	A	138	PRO	3.3
1	B	135	PRO	3.1
1	B	132	PRO	3.0
1	B	134	VAL	2.9
1	A	72	LEU	2.8
1	A	52	GLU	2.8
1	A	50	LEU	2.5
1	A	70	MET	2.4
1	B	70	MET	2.4
1	A	99	ILE	2.4
1	B	145	ASP	2.4
1	B	137	LYS	2.2
1	A	277	GLU	2.2
1	A	63	PRO	2.0

6.2 Non-standard residues in protein, DNA, RNA chains [i](#)

There are no non-standard protein/DNA/RNA residues in this entry.

6.3 Carbohydrates [i](#)

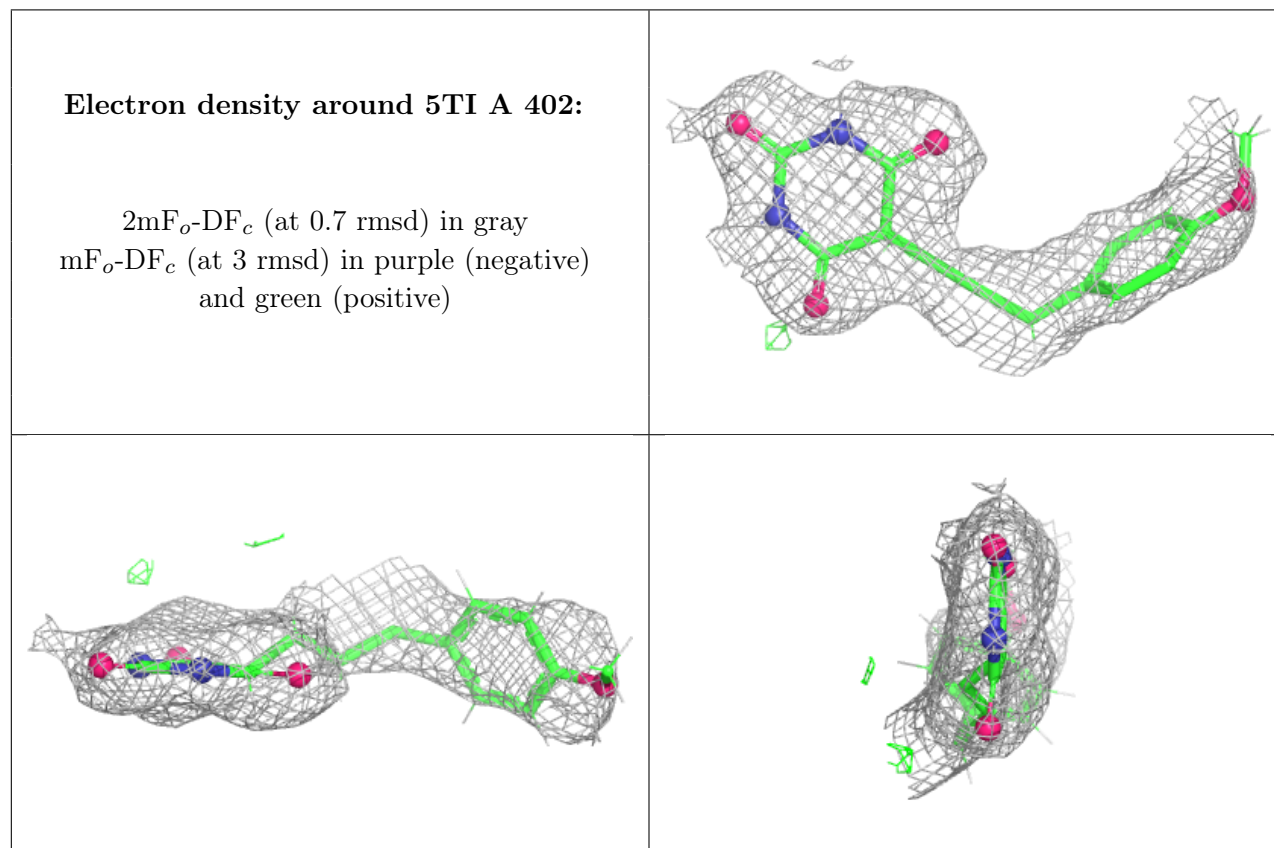
There are no oligosaccharides in this entry.

6.4 Ligands [i](#)

In the following table, the Atoms column lists the number of modelled atoms in the group and the number defined in the chemical component dictionary. The B-factors column lists the minimum, median, 95th percentile and maximum values of B factors of atoms in the group. The column labelled 'Q< 0.9' lists the number of atoms with occupancy less than 0.9.

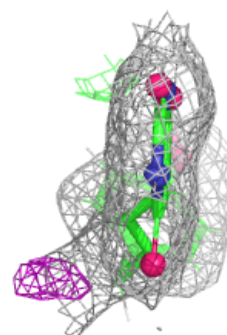
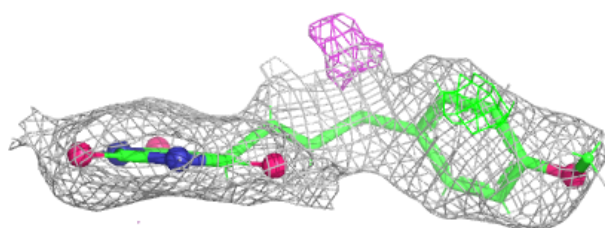
Mol	Type	Chain	Res	Atoms	RSCC	RSR	B-factors(\AA^2)	Q<0.9
3	5TI	A	402	20/20	0.89	0.14	49,66,84,84	33
3	5TI	B	402	20/20	0.92	0.09	42,51,63,63	2
2	FMN	A	401	31/31	0.95	0.09	38,52,63,65	0
2	FMN	B	401	31/31	0.96	0.07	30,39,48,48	0

The following is a graphical depiction of the model fit to experimental electron density of all instances of the Ligand of Interest. In addition, ligands with molecular weight > 250 and outliers as shown on the geometry validation Tables will also be included. Each fit is shown from different orientation to approximate a three-dimensional view.

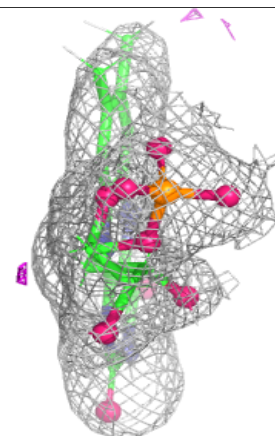
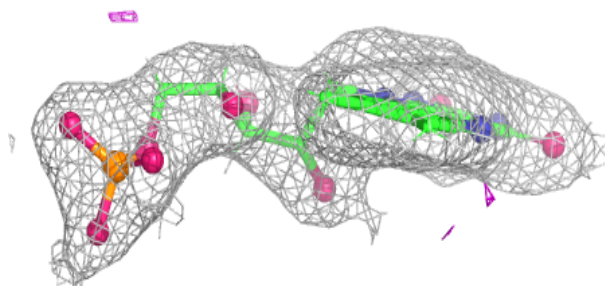
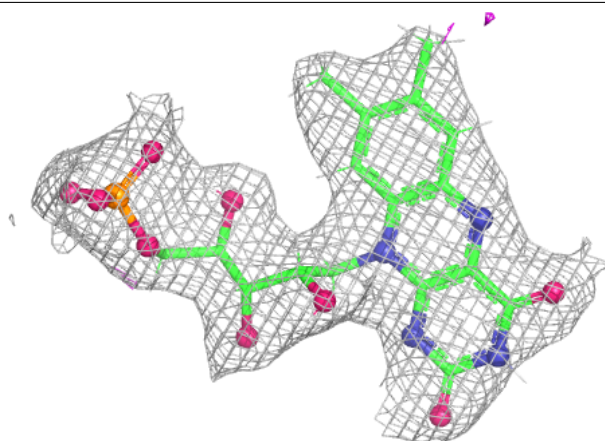


Electron density around 5TI B 402:

$2mF_o-DF_c$ (at 0.7 rmsd) in gray
 mF_o-DF_c (at 3 rmsd) in purple (negative)
and green (positive)

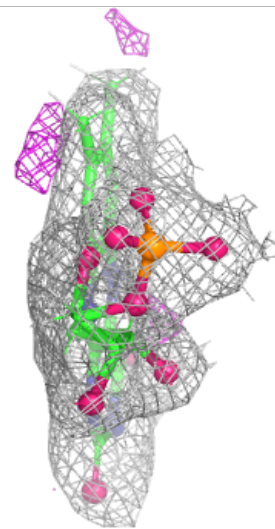
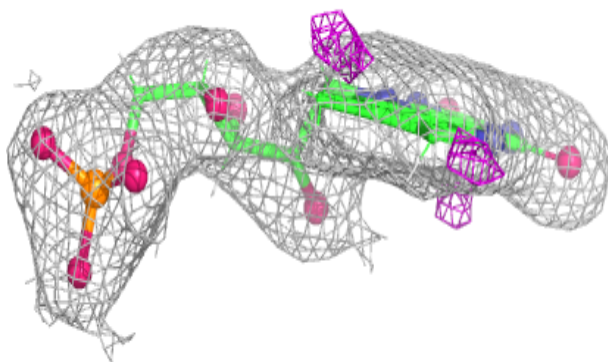
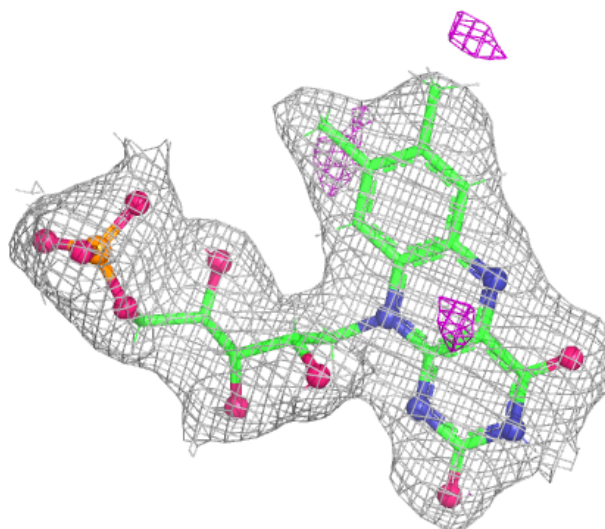
**Electron density around FMN A 401:**

$2mF_o-DF_c$ (at 0.7 rmsd) in gray
 mF_o-DF_c (at 3 rmsd) in purple (negative)
and green (positive)



Electron density around FMN B 401:

$2mF_o-DF_c$ (at 0.7 rmsd) in gray
 mF_o-DF_c (at 3 rmsd) in purple (negative)
and green (positive)



6.5 Other polymers [i](#)

There are no such residues in this entry.