



Full wwPDB X-ray Structure Validation Report ⓘ

Apr 5, 2026 – 03:49 AM UTC

PDB ID : 9NYQ / pdb_00009nyq
Title : Crystal structure of CDK2/CyclinE1 in complex with Cpd 3
Authors : Collier, P.; Zheng, X.; Ford, M.; Weiss, M.; Aversa, R.; Chen, D.; Li, K.; Growney, J.D.; Yang, A.; Sathappa, M.; Breitkopf, S.B.; Enerson, B.; Sawant, R.; Su, L.; Howarth, L.; Liang, T.; Paul, A.; Sharma, K.; Williams, J.; Kwiatkowski, N.P.
Deposited on : 2025-03-28
Resolution : 2.85 Å(reported)

This is a Full wwPDB X-ray Structure Validation Report for a publicly released PDB entry.

We welcome your comments at validation@mail.wwpdb.org

A user guide is available at

<https://www.wwpdb.org/validation/2017/XrayValidationReportHelp>

with specific help available everywhere you see the ⓘ symbol.

The types of validation reports are described at

<http://www.wwpdb.org/validation/2017/FAQs#types>.

The following versions of software and data (see [references](#) ①) were used in the production of this report:

MolProbity	:	4-5-2 with Phenix2.0
Mogul	:	2022.3.0, CSD as543be (2022)
Xtriage (Phenix)	:	2.0
EDS	:	3.0
Buster-report	:	wwPDB partial adaption of 1.1.7 (2018)
Percentile statistics	:	20250101.v01 (using entries in the PDB archive January 1st 2025)
CCP4	:	9.0.010 (Gargrove)
Density-Fitness	:	1.0.12
Ideal geometry (proteins)	:	Engh & Huber (2001)
Ideal geometry (DNA, RNA)	:	Parkinson et al. (1996)
Validation Pipeline (wwPDB-VP)	:	2.49

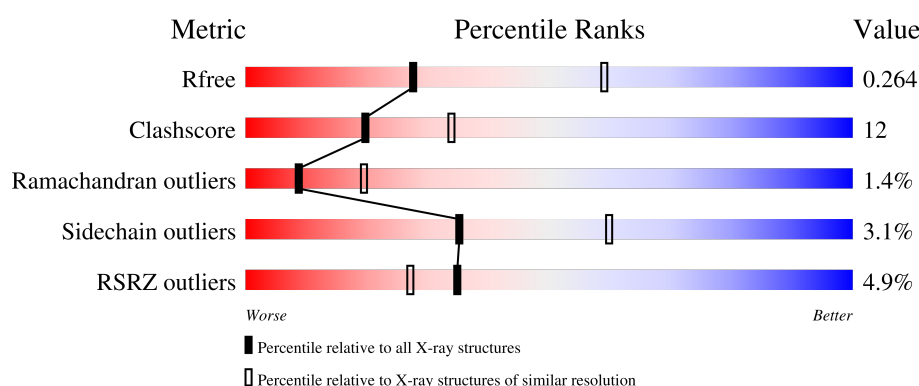
1 Overall quality at a glance

The following experimental techniques were used to determine the structure:

X-RAY DIFFRACTION

The reported resolution of this entry is 2.85 Å.

Percentile scores (ranging between 0-100) for global validation metrics of the entry are shown in the following graphic. The table shows the number of entries on which the scores are based.



Metric	Whole archive (#Entries)	Similar resolution (#Entries, resolution range(Å))
R_{free}	180053	1407 (2.88-2.84)
Clashscore	190562	1446 (2.88-2.84)
Ramachandran outliers	187476	1406 (2.88-2.84)
Sidechain outliers	187428	1407 (2.88-2.84)
RSRZ outliers	180081	1408 (2.88-2.84)

The table below summarises the geometric issues observed across the polymeric chains and their fit to the electron density. The red, orange, yellow and green segments of the lower bar indicate the fraction of residues that contain outliers for ≥ 3 , 2, 1 and 0 types of geometric quality criteria respectively. A grey segment represents the fraction of residues that are not modelled. The numeric value for each fraction is indicated below the corresponding segment, with a dot representing fractions $\leq 5\%$. The upper red bar (where present) indicates the fraction of residues that have poor fit to the electron density. The numeric value is given above the bar.

Mol	Chain	Length	Quality of chain
1	A	299	<div> <div>3%</div> <div>77%</div> <div>20%</div> <div>..</div> </div>
2	B	410	<div> <div>5%</div> <div>45%</div> <div>23%</div> <div>32%</div> </div>

2 Entry composition [i](#)

There are 4 unique types of molecules in this entry. The entry contains 4719 atoms, of which 0 are hydrogens and 0 are deuteriums.

In the tables below, the ZeroOcc column contains the number of atoms modelled with zero occupancy, the AltConf column contains the number of residues with at least one atom in alternate conformation and the Trace column contains the number of residues modelled with at most 2 atoms.

- Molecule 1 is a protein called Cyclin-dependent kinase 2.

Mol	Chain	Residues	Atoms						ZeroOcc	AltConf	Trace
			Total	C	N	O	P	S			
1	A	299	2406	1562	409	426	1	8	0	0	0

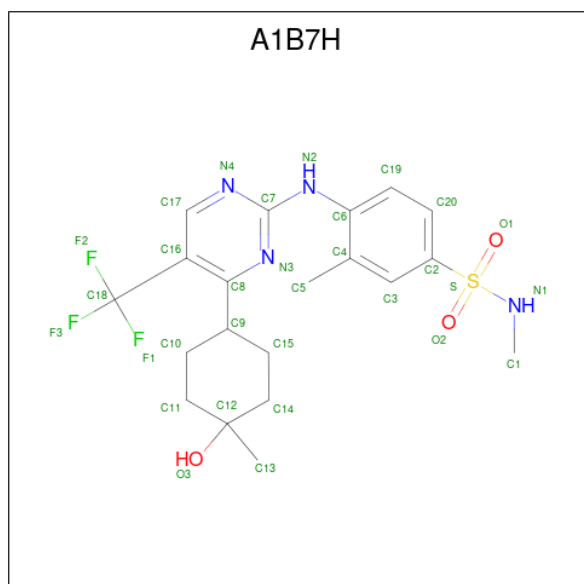
There is a discrepancy between the modelled and reference sequences:

Chain	Residue	Modelled	Actual	Comment	Reference
A	0	ALA	-	expression tag	UNP P24941

- Molecule 2 is a protein called G1/S-specific cyclin-E1.

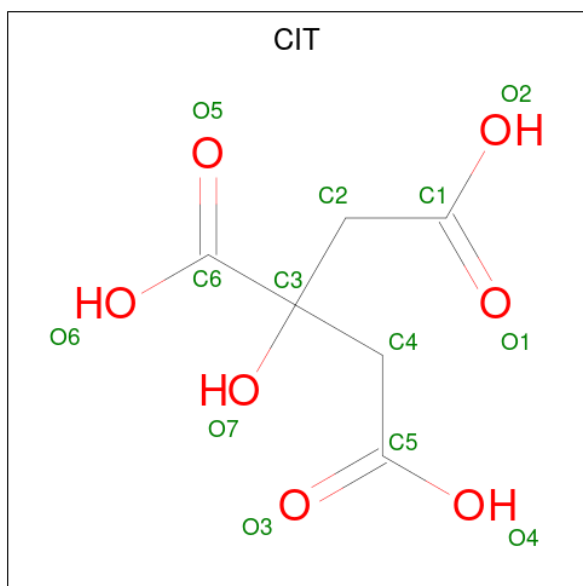
Mol	Chain	Residues	Atoms					ZeroOcc	AltConf	Trace
			Total	C	N	O	S			
2	B	278	2269	1474	372	407	16	0	0	0

- Molecule 3 is 4-({4-[(1s,4s)-4-hydroxy-4-methylcyclohexyl]-5-(trifluoromethyl)pyrimidin-2-yl}amino)-N,3-dimethylbenzene-1-sulfonamide (CCD ID: A1B7H) (formula: C₂₀H₂₅F₃N₄O₃S) (labeled as "Ligand of Interest" by depositor).



Mol	Chain	Residues	Atoms					ZeroOcc	AltConf
3	A	1	Total	C	F	N	O	S	
			31	20	3	4	3	1	
								0	0

- Molecule 4 is CITRIC ACID (CCD ID: CIT) (formula: $C_6H_8O_7$).

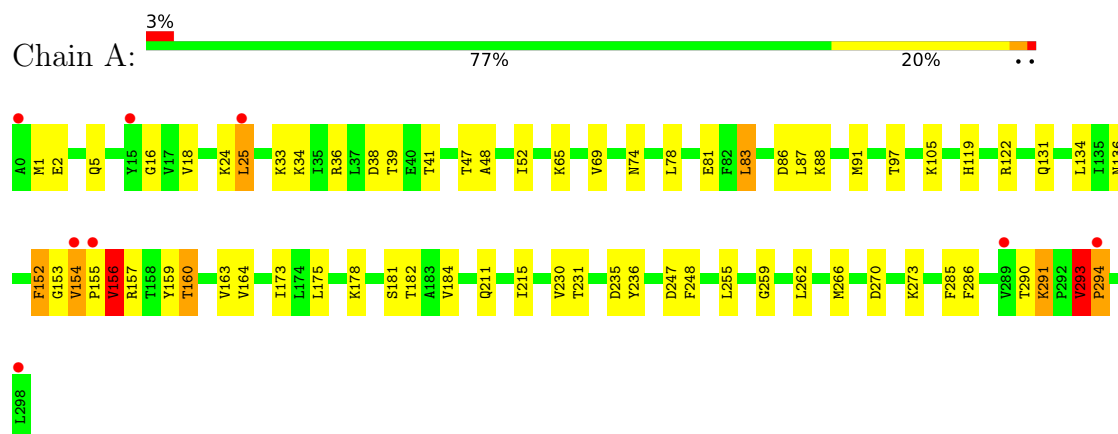


Mol	Chain	Residues	Atoms			ZeroOcc	AltConf
4	B	1	Total	C	O		
			13	6	7	0	0

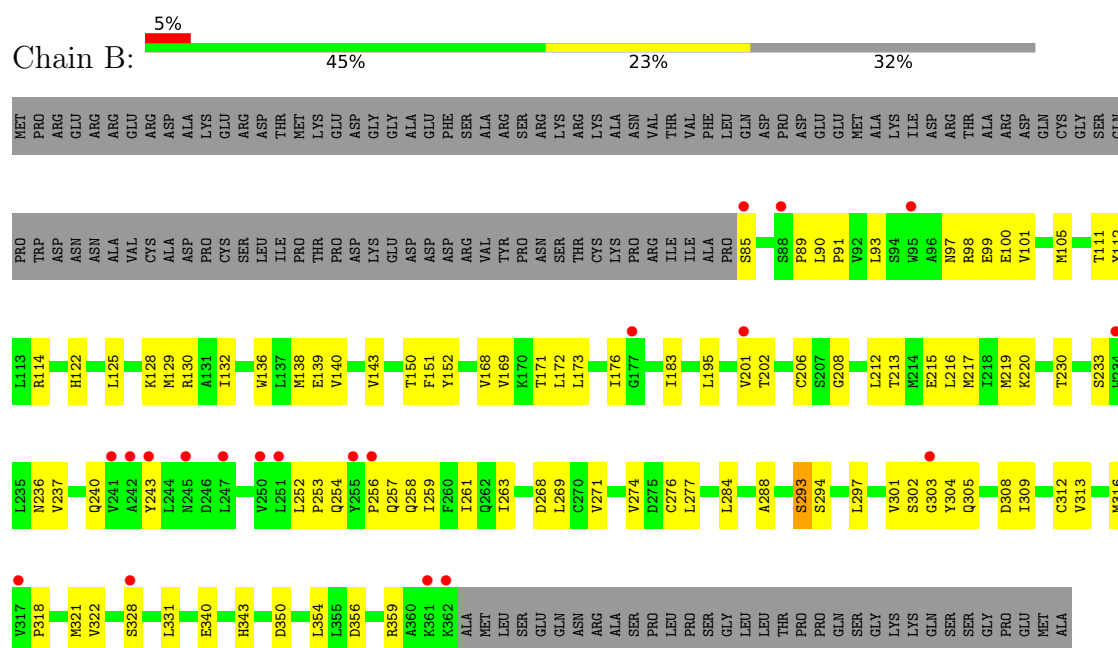
3 Residue-property plots [i](#)

These plots are drawn for all protein, RNA, DNA and oligosaccharide chains in the entry. The first graphic for a chain summarises the proportions of the various outlier classes displayed in the second graphic. The second graphic shows the sequence view annotated by issues in geometry and electron density. Residues are color-coded according to the number of geometric quality criteria for which they contain at least one outlier: green = 0, yellow = 1, orange = 2 and red = 3 or more. A red dot above a residue indicates a poor fit to the electron density ($RSRZ > 2$). Stretches of 2 or more consecutive residues without any outlier are shown as a green connector. Residues present in the sample, but not in the model, are shown in grey.

• Molecule 1: Cyclin-dependent kinase 2



• Molecule 2: G1/S-specific cyclin-E1



4 Data and refinement statistics

Property	Value	Source
Space group	P 41 21 2	Depositor
Cell constants a, b, c, α , β , γ	101.11Å 101.11Å 152.94Å 90.00° 90.00° 90.00°	Depositor
Resolution (Å)	84.34 – 2.85 84.34 – 2.85	Depositor EDS
% Data completeness (in resolution range)	99.9 (84.34-2.85) 100.0 (84.34-2.85)	Depositor EDS
R_{merge}	0.10	Depositor
R_{sym}	(Not available)	Depositor
$\langle I/\sigma(I) \rangle$ ¹	2.83 (at 2.86Å)	Xtriage
Refinement program	PHENIX (1.20.1_4487: ???)	Depositor
R, R_{free}	0.239 , 0.264 0.242 , 0.264	Depositor DCC
R_{free} test set	974 reflections (5.07%)	wwPDB-VP
Wilson B-factor (Å ²)	89.4	Xtriage
Anisotropy	0.001	Xtriage
Bulk solvent k_{sol} (e/Å ³), B_{sol} (Å ²)	0.33 , 56.1	EDS
L-test for twinning ²	$\langle L \rangle = 0.51$, $\langle L^2 \rangle = 0.35$	Xtriage
Estimated twinning fraction	No twinning to report.	Xtriage
F_o, F_c correlation	0.93	EDS
Total number of atoms	4719	wwPDB-VP
Average B, all atoms (Å ²)	92.0	wwPDB-VP

Xtriage's analysis on translational NCS is as follows: *The largest off-origin peak in the Patterson function is 4.06% of the height of the origin peak. No significant pseudotranslation is detected.*

¹Intensities estimated from amplitudes.

²Theoretical values of $\langle |L| \rangle$, $\langle L^2 \rangle$ for acentric reflections are 0.5, 0.333 respectively for untwinned datasets, and 0.375, 0.2 for perfectly twinned datasets.

5 Model quality [i](#)

5.1 Standard geometry [i](#)

Bond lengths and bond angles in the following residue types are not validated in this section: A1B7H, TPO, CIT

The Z score for a bond length (or angle) is the number of standard deviations the observed value is removed from the expected value. A bond length (or angle) with $|Z| > 5$ is considered an outlier worth inspection. RMSZ is the root-mean-square of all Z scores of the bond lengths (or angles).

Mol	Chain	Bond lengths		Bond angles	
		RMSZ	$\# Z > 5$	RMSZ	$\# Z > 5$
1	A	0.21	0/2456	0.44	1/3332 (0.0%)
2	B	0.20	0/2325	0.42	0/3154
All	All	0.21	0/4781	0.43	1/6486 (0.0%)

There are no bond length outliers.

All (1) bond angle outliers are listed below:

Mol	Chain	Res	Type	Atoms	Z	Observed(°)	Ideal(°)
1	A	152	PHE	CA-CB-CG	5.72	119.53	113.80

There are no chirality outliers.

There are no planarity outliers.

5.2 Too-close contacts [i](#)

In the following table, the Non-H and H(model) columns list the number of non-hydrogen atoms and hydrogen atoms in the chain respectively. The H(added) column lists the number of hydrogen atoms added and optimized by MolProbity. The Clashes column lists the number of clashes within the asymmetric unit, whereas Symm-Clashes lists symmetry-related clashes.

Mol	Chain	Non-H	H(model)	H(added)	Clashes	Symm-Clashes
1	A	2406	0	2454	45	0
2	B	2269	0	2271	67	0
3	A	31	0	0	0	0
4	B	13	0	5	0	0
All	All	4719	0	4730	109	0

The all-atom clashscore is defined as the number of clashes found per 1000 atoms (including hydrogen atoms). The all-atom clashscore for this structure is 12.

All (109) close contacts within the same asymmetric unit are listed below, sorted by their clash magnitude.

Atom-1	Atom-2	Interatomic distance (Å)	Clash overlap (Å)
2:B:130:ARG:HD3	2:B:274:VAL:HG22	1.76	0.68
2:B:288:ALA:HA	2:B:316:MET:HE1	1.74	0.68
2:B:257:GLN:HB3	2:B:343:HIS:HB3	1.75	0.67
2:B:240:GLN:NE2	2:B:252:LEU:O	2.28	0.66
1:A:153:GLY:O	1:A:154:VAL:C	2.40	0.64
2:B:213:THR:O	2:B:217:MET:HG3	1.98	0.63
1:A:52:ILE:HG12	1:A:78:LEU:HD11	1.79	0.62
1:A:1:MET:H	1:A:1:MET:HE2	1.62	0.62
1:A:154:VAL:O	1:A:155:PRO:C	2.41	0.62
1:A:83:LEU:HD23	1:A:136:ASN:HB3	1.83	0.61
1:A:153:GLY:O	1:A:156:VAL:N	2.32	0.59
2:B:128:LYS:O	2:B:132:ILE:HG13	2.02	0.59
2:B:257:GLN:O	2:B:261:ILE:HD12	2.02	0.59
2:B:259:ILE:O	2:B:263:ILE:HG13	2.02	0.59
1:A:293:VAL:HB	1:A:294:PRO:HD3	1.84	0.59
2:B:101:VAL:O	2:B:105:MET:HG3	2.02	0.58
2:B:297:LEU:O	2:B:301:VAL:HG22	2.02	0.58
1:A:48:ALA:O	1:A:52:ILE:HG13	2.04	0.58
2:B:129:MET:HA	2:B:132:ILE:HD12	1.86	0.57
2:B:202:THR:HG21	2:B:206:CYS:HB2	1.85	0.57
2:B:112:TYR:O	2:B:114:ARG:NH1	2.37	0.57
2:B:309:ILE:O	2:B:313:VAL:HG23	2.05	0.57
2:B:172:LEU:HG	2:B:176:ILE:HD11	1.87	0.56
1:A:16:GLY:HA3	1:A:34:LYS:O	2.04	0.56
1:A:155:PRO:HG2	2:B:236:ASN:HB3	1.88	0.56
2:B:261:ILE:HD11	2:B:331:LEU:HD13	1.86	0.56
2:B:97:ASN:HB3	2:B:100:GLU:HB2	1.87	0.56
1:A:105:LYS:HE3	1:A:285:PHE:O	2.06	0.55
1:A:293:VAL:CB	1:A:294:PRO:HD3	2.37	0.55
2:B:258:GLN:HE21	2:B:331:LEU:H	1.55	0.55
1:A:1:MET:HE2	1:A:1:MET:N	2.22	0.54
1:A:38:ASP:HB3	1:A:74:ASN:OD1	2.07	0.54
2:B:302:SER:C	2:B:304:TYR:H	2.16	0.54
2:B:293:SER:OG	2:B:297:LEU:HD23	2.08	0.54
2:B:288:ALA:CA	2:B:316:MET:HE1	2.37	0.54
1:A:69:VAL:HG22	1:A:78:LEU:HD13	1.88	0.54
2:B:276:CYS:HB2	2:B:284:LEU:HD11	1.90	0.53
1:A:36:ARG:O	1:A:39:THR:OG1	2.25	0.53
2:B:318:PRO:O	2:B:322:VAL:HG23	2.08	0.52
2:B:302:SER:O	2:B:304:TYR:N	2.42	0.52

Continued on next page...

Continued from previous page...

Atom-1	Atom-2	Interatomic distance (Å)	Clash overlap (Å)
1:A:181:SER:OG	1:A:182:THR:N	2.26	0.52
1:A:286:PHE:O	1:A:290:THR:HG22	2.10	0.52
1:A:87:LEU:O	1:A:91:MET:HG3	2.08	0.52
1:A:211:GLN:O	1:A:215:ILE:HG13	2.10	0.52
2:B:139:GLU:O	2:B:143:VAL:HG23	2.10	0.52
1:A:65:LYS:H	1:A:81:GLU:HG2	1.77	0.50
2:B:233:SER:O	2:B:237:VAL:HG23	2.12	0.50
1:A:163:VAL:HG23	1:A:173:ILE:HD13	1.94	0.50
2:B:215:GLU:O	2:B:219:MET:HG3	2.11	0.50
1:A:255:LEU:HG	1:A:259:GLY:HA3	1.94	0.49
2:B:114:ARG:HB3	2:B:277:LEU:HD13	1.93	0.49
2:B:85:SER:N	2:B:305:GLN:OE1	2.46	0.49
2:B:89:PRO:HG3	2:B:302:SER:HA	1.95	0.48
2:B:312:CYS:O	2:B:316:MET:HB2	2.13	0.48
2:B:90:LEU:O	2:B:98:ARG:NH1	2.48	0.47
2:B:195:LEU:HD22	2:B:212:LEU:HD21	1.96	0.47
1:A:230:VAL:HG23	1:A:231:THR:HG23	1.97	0.47
2:B:215:GLU:HG3	2:B:216:LEU:N	2.29	0.47
2:B:176:ILE:H	2:B:176:ILE:HD12	1.80	0.47
2:B:122:HIS:CE1	2:B:168:VAL:HG23	2.50	0.46
2:B:91:PRO:O	2:B:98:ARG:HD2	2.15	0.46
2:B:136:TRP:O	2:B:140:VAL:HG12	2.15	0.46
2:B:293:SER:OG	2:B:294:SER:N	2.48	0.46
1:A:18:VAL:HG22	1:A:33:LYS:HG3	1.98	0.46
1:A:86:ASP:OD1	1:A:87:LEU:N	2.49	0.46
2:B:93:LEU:HD23	2:B:98:ARG:HB3	1.97	0.46
2:B:152:TYR:HB3	2:B:230:THR:HB	1.98	0.46
2:B:240:GLN:NE2	2:B:254:GLN:H	2.14	0.46
1:A:86:ASP:OD1	1:A:88:LYS:N	2.43	0.45
1:A:86:ASP:OD2	1:A:131:GLN:HA	2.16	0.45
2:B:169:VAL:HG22	2:B:171:THR:H	1.81	0.45
2:B:183:ILE:HD13	2:B:219:MET:HG2	1.99	0.45
1:A:83:LEU:HD13	1:A:134:LEU:HB2	1.99	0.45
1:A:262:LEU:O	1:A:266:MET:HG3	2.17	0.45
2:B:125:LEU:HD11	2:B:168:VAL:HB	1.99	0.45
1:A:119:HIS:CE1	1:A:182:THR:HB	2.52	0.44
2:B:257:GLN:HB2	2:B:331:LEU:HD22	1.99	0.44
1:A:5:GLN:HB2	1:A:24:LYS:HE2	1.99	0.44
2:B:269:LEU:HD11	2:B:354:LEU:HB3	1.99	0.43
2:B:93:LEU:CD2	2:B:98:ARG:HB3	2.47	0.43
1:A:159:TYR:O	1:A:160:TPO:C	2.65	0.43

Continued on next page...

Continued from previous page...

Atom-1	Atom-2	Interatomic distance (Å)	Clash overlap (Å)
1:A:122:ARG:HE	1:A:154:VAL:HG23	1.84	0.43
1:A:175:LEU:HA	1:A:235:ASP:HB2	2.00	0.43
2:B:122:HIS:ND1	2:B:168:VAL:HG23	2.33	0.43
1:A:122:ARG:HA	1:A:152:PHE:CE2	2.53	0.43
2:B:258:GLN:NE2	2:B:331:LEU:H	2.15	0.43
2:B:98:ARG:HG2	2:B:99:GLU:OE1	2.19	0.43
2:B:350:ASP:O	2:B:354:LEU:HD13	2.19	0.43
1:A:178:LYS:HE3	2:B:340:GLU:OE2	2.19	0.43
2:B:356:ASP:HA	2:B:359:ARG:HG2	2.00	0.43
1:A:270:ASP:HB3	1:A:273:LYS:HB2	2.01	0.42
2:B:172:LEU:O	2:B:176:ILE:HD12	2.19	0.42
1:A:25:LEU:H	1:A:25:LEU:HG	1.51	0.42
1:A:231:THR:HA	1:A:236:TYR:CD1	2.54	0.42
2:B:240:GLN:HE21	2:B:253:PRO:HA	1.83	0.42
1:A:291:LYS:HE3	1:A:291:LYS:HB3	1.64	0.42
2:B:122:HIS:HB3	2:B:125:LEU:HD12	2.01	0.42
2:B:208:GLY:O	2:B:212:LEU:HG	2.20	0.42
2:B:215:GLU:OE2	2:B:219:MET:HE2	2.20	0.42
2:B:253:PRO:C	2:B:254:GLN:HG3	2.45	0.41
1:A:181:SER:O	1:A:184:VAL:HG22	2.20	0.41
1:A:247:ASP:OD1	1:A:248:PHE:N	2.53	0.41
2:B:243:TYR:CD2	2:B:256:PRO:HD2	2.55	0.41
1:A:155:PRO:HA	2:B:240:GLN:HG3	2.02	0.41
1:A:154:VAL:O	1:A:156:VAL:N	2.54	0.41
2:B:138:MET:HG3	2:B:151:PHE:CE1	2.56	0.41
2:B:268:ASP:O	2:B:271:VAL:HG12	2.21	0.41
2:B:140:VAL:CG2	2:B:201:VAL:HG21	2.51	0.40
2:B:261:ILE:HD12	2:B:261:ILE:H	1.86	0.40

There are no symmetry-related clashes.

5.3 Torsion angles [i](#)

5.3.1 Protein backbone [i](#)

In the following table, the Percentiles column shows the percent Ramachandran outliers of the chain as a percentile score with respect to all X-ray entries followed by that with respect to entries of similar resolution.

The Analysed column shows the number of residues for which the backbone conformation was analysed, and the total number of residues.

Mol	Chain	Analysed	Favoured	Allowed	Outliers	Percentiles	
1	A	296/299 (99%)	276 (93%)	15 (5%)	5 (2%)	7	16
2	B	276/410 (67%)	262 (95%)	11 (4%)	3 (1%)	11	24
All	All	572/709 (81%)	538 (94%)	26 (4%)	8 (1%)	9	19

All (8) Ramachandran outliers are listed below:

Mol	Chain	Res	Type
1	A	154	VAL
1	A	294	PRO
1	A	156	VAL
1	A	164	VAL
2	B	303	GLY
2	B	321	MET
1	A	293	VAL
2	B	293	SER

5.3.2 Protein sidechains ⓘ

In the following table, the Percentiles column shows the percent sidechain outliers of the chain as a percentile score with respect to all X-ray entries followed by that with respect to entries of similar resolution.

The Analysed column shows the number of residues for which the sidechain conformation was analysed, and the total number of residues.

Mol	Chain	Analysed	Rotameric	Outliers	Percentiles	
1	A	262/262 (100%)	252 (96%)	10 (4%)	29	54
2	B	249/365 (68%)	243 (98%)	6 (2%)	43	67
All	All	511/627 (82%)	495 (97%)	16 (3%)	35	60

All (16) residues with a non-rotameric sidechain are listed below:

Mol	Chain	Res	Type
1	A	2	GLU
1	A	25	LEU
1	A	41	THR
1	A	47	THR
1	A	83	LEU
1	A	97	THR
1	A	156	VAL
1	A	157	ARG

Continued on next page...

Continued from previous page...

Mol	Chain	Res	Type
1	A	291	LYS
1	A	293	VAL
2	B	111	THR
2	B	150	THR
2	B	173	LEU
2	B	220	LYS
2	B	308	ASP
2	B	328	SER

Sometimes sidechains can be flipped to improve hydrogen bonding and reduce clashes. All (7) such sidechains are listed below:

Mol	Chain	Res	Type
1	A	71	HIS
1	A	113	GLN
2	B	236	ASN
2	B	240	GLN
2	B	257	GLN
2	B	258	GLN
2	B	311	ASN

5.3.3 RNA ⓘ

There are no RNA molecules in this entry.

5.4 Non-standard residues in protein, DNA, RNA chains ⓘ

1 non-standard protein/DNA/RNA residue is modelled in this entry.

In the following table, the Counts columns list the number of bonds (or angles) for which Mogul statistics could be retrieved, the number of bonds (or angles) that are observed in the model and the number of bonds (or angles) that are defined in the Chemical Component Dictionary. The Link column lists molecule types, if any, to which the group is linked. The Z score for a bond length (or angle) is the number of standard deviations the observed value is removed from the expected value. A bond length (or angle) with $|Z| > 2$ is considered an outlier worth inspection. RMSZ is the root-mean-square of all Z scores of the bond lengths (or angles).

Mol	Type	Chain	Res	Link	Bond lengths			Bond angles		
					Counts	RMSZ	$\# Z > 2$	Counts	RMSZ	$\# Z > 2$
1	TPO	A	160	1	8,10,11	0.83	0	10,14,16	2.13	2 (20%)

In the following table, the Chirals column lists the number of chiral outliers, the number of chiral

centers analysed, the number of these observed in the model and the number defined in the Chemical Component Dictionary. Similar counts are reported in the Torsion and Rings columns. '-' means no outliers of that kind were identified.

Mol	Type	Chain	Res	Link	Chirals	Torsions	Rings
1	TPO	A	160	1	-	3/9/11/13	-

There are no bond length outliers.

All (2) bond angle outliers are listed below:

Mol	Chain	Res	Type	Atoms	Z	Observed($^{\circ}$)	Ideal($^{\circ}$)
1	A	160	TPO	P-OG1-CB	-6.15	106.61	123.33
1	A	160	TPO	O-C-CA	-2.03	119.55	124.77

There are no chirality outliers.

All (3) torsion outliers are listed below:

Mol	Chain	Res	Type	Atoms
1	A	160	TPO	C-CA-CB-CG2
1	A	160	TPO	CB-OG1-P-O3P
1	A	160	TPO	N-CA-CB-CG2

There are no ring outliers.

1 monomer is involved in 1 short contact:

Mol	Chain	Res	Type	Clashes	Symm-Clashes
1	A	160	TPO	1	0

5.5 Carbohydrates [i](#)

There are no oligosaccharides in this entry.

5.6 Ligand geometry [i](#)

2 ligands are modelled in this entry.

In the following table, the Counts columns list the number of bonds (or angles) for which Mogul statistics could be retrieved, the number of bonds (or angles) that are observed in the model and the number of bonds (or angles) that are defined in the Chemical Component Dictionary. The Link column lists molecule types, if any, to which the group is linked. The Z score for a bond length (or angle) is the number of standard deviations the observed value is removed from the

expected value. A bond length (or angle) with $|Z| > 2$ is considered an outlier worth inspection. RMSZ is the root-mean-square of all Z scores of the bond lengths (or angles).

Mol	Type	Chain	Res	Link	Bond lengths			Bond angles		
					Counts	RMSZ	$\# Z > 2$	Counts	RMSZ	$\# Z > 2$
4	CIT	B	401	-	12,12,12	1.04	0	17,17,17	1.45	2 (11%)
3	A1B7H	A	301	-	33,33,33	1.01	4 (12%)	47,51,51	1.94	10 (21%)

In the following table, the Chirals column lists the number of chiral outliers, the number of chiral centers analysed, the number of these observed in the model and the number defined in the Chemical Component Dictionary. Similar counts are reported in the Torsion and Rings columns. '-' means no outliers of that kind were identified.

Mol	Type	Chain	Res	Link	Chirals	Torsions	Rings
4	CIT	B	401	-	-	10/16/16/16	-
3	A1B7H	A	301	-	-	4/23/35/35	0/3/3/3

All (4) bond length outliers are listed below:

Mol	Chain	Res	Type	Atoms	Z	Observed(Å)	Ideal(Å)
3	A	301	A1B7H	S-N1	2.97	1.66	1.61
3	A	301	A1B7H	F3-C18	2.07	1.40	1.33
3	A	301	A1B7H	F2-C18	2.07	1.40	1.33
3	A	301	A1B7H	F1-C18	2.03	1.40	1.33

All (12) bond angle outliers are listed below:

Mol	Chain	Res	Type	Atoms	Z	Observed(°)	Ideal(°)
3	A	301	A1B7H	N4-C7-N3	-5.97	120.65	126.42
3	A	301	A1B7H	C15-C14-C12	-4.80	109.40	112.97
3	A	301	A1B7H	C16-C8-N3	-4.21	118.78	123.43
3	A	301	A1B7H	C10-C11-C12	-3.80	110.14	112.97
3	A	301	A1B7H	C17-N4-C7	3.74	120.94	115.81
4	B	401	CIT	O6-C6-C3	3.49	119.83	113.14
3	A	301	A1B7H	C16-C17-N4	-3.19	119.88	124.18
3	A	301	A1B7H	O2-S-O1	2.75	122.86	119.52
3	A	301	A1B7H	F1-C18-C16	-2.43	108.34	112.65
3	A	301	A1B7H	C11-C10-C9	-2.22	109.35	111.46
4	B	401	CIT	O2-C1-C2	2.07	120.89	114.35
3	A	301	A1B7H	C14-C15-C9	-2.05	109.51	111.46

There are no chirality outliers.

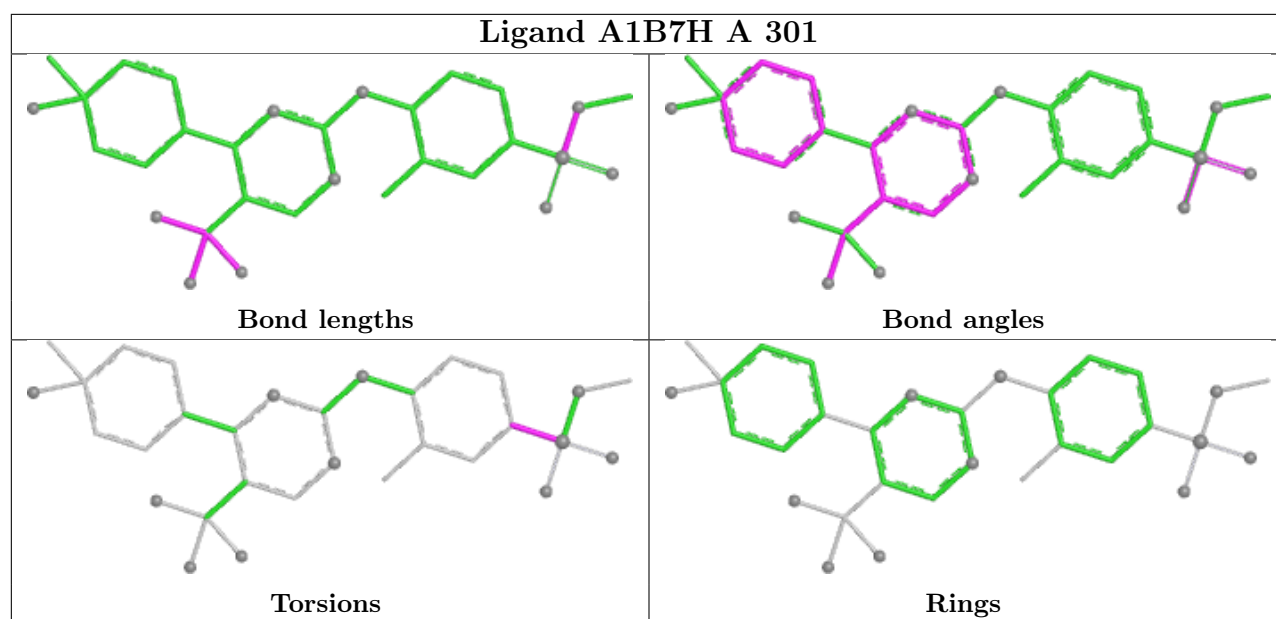
All (14) torsion outliers are listed below:

Mol	Chain	Res	Type	Atoms
4	B	401	CIT	C6-C3-C4-C5
3	A	301	A1B7H	C20-C2-S-O2
3	A	301	A1B7H	C3-C2-S-O2
4	B	401	CIT	C2-C3-C4-C5
4	B	401	CIT	C2-C3-C6-O6
3	A	301	A1B7H	C20-C2-S-N1
3	A	301	A1B7H	C3-C2-S-N1
4	B	401	CIT	C2-C3-C6-O5
4	B	401	CIT	C1-C2-C3-C6
4	B	401	CIT	C4-C3-C6-O6
4	B	401	CIT	O7-C3-C4-C5
4	B	401	CIT	O7-C3-C6-O5
4	B	401	CIT	O7-C3-C6-O6
4	B	401	CIT	C1-C2-C3-O7

There are no ring outliers.

No monomer is involved in short contacts.

The following is a two-dimensional graphical depiction of Mogul quality analysis of bond lengths, bond angles, torsion angles, and ring geometry for all instances of the Ligand of Interest. In addition, ligands with molecular weight > 250 and outliers as shown on the validation Tables will also be included. For torsion angles, if less than 5% of the Mogul distribution of torsion angles is within 10 degrees of the torsion angle in question, then that torsion angle is considered an outlier. Any bond that is central to one or more torsion angles identified as an outlier by Mogul will be highlighted in the graph. For rings, the root-mean-square deviation (RMSD) between the ring in question and similar rings identified by Mogul is calculated over all ring torsion angles. If the average RMSD is greater than 60 degrees and the minimal RMSD between the ring in question and any Mogul-identified rings is also greater than 60 degrees, then that ring is considered an outlier. The outliers are highlighted in purple. The color gray indicates Mogul did not find sufficient equivalents in the CSD to analyse the geometry.



5.7 Other polymers [i](#)

There are no such residues in this entry.

5.8 Polymer linkage issues [i](#)

There are no chain breaks in this entry.

6 Fit of model and data

6.1 Protein, DNA and RNA chains

In the following table, the column labelled ‘#RSRZ > 2’ contains the number (and percentage) of RSRZ outliers, followed by percent RSRZ outliers for the chain as percentile scores relative to all X-ray entries and entries of similar resolution. The OWAB column contains the minimum, median, 95th percentile and maximum values of the occupancy-weighted average B-factor per residue. The column labelled ‘Q < 0.9’ lists the number of (and percentage) of residues with an average occupancy less than 0.9.

Mol	Chain	Analysed	<RSRZ>	#RSRZ>2	OWAB(Å ²)	Q<0.9
1	A	298/299 (99%)	0.31	8 (2%) 56 47	62, 80, 122, 146	0
2	B	278/410 (67%)	0.66	20 (7%) 21 15	72, 99, 129, 163	0
All	All	576/709 (81%)	0.48	28 (4%) 35 27	62, 90, 126, 163	0

All (28) RSRZ outliers are listed below:

Mol	Chain	Res	Type	RSRZ
1	A	154	VAL	5.4
1	A	155	PRO	4.8
2	B	95	TRP	4.7
1	A	298	LEU	4.6
2	B	242	ALA	4.0
2	B	255	TYR	4.0
2	B	256	PRO	3.2
2	B	250	VAL	2.9
1	A	0	ALA	2.9
2	B	247	LEU	2.7
2	B	328	SER	2.6
2	B	85	SER	2.5
1	A	25	LEU	2.5
2	B	88	SER	2.4
2	B	241	VAL	2.4
2	B	362	LYS	2.4
2	B	177	GLY	2.3
2	B	234	TRP	2.3
2	B	245	ASN	2.3
2	B	361	LYS	2.3
1	A	15	TYR	2.2
2	B	303	GLY	2.1
2	B	317	VAL	2.1
1	A	289	VAL	2.1

Continued on next page...

Continued from previous page...

Mol	Chain	Res	Type	RSRZ
2	B	201	VAL	2.0
1	A	294	PRO	2.0
2	B	251	LEU	2.0
2	B	243	TYR	2.0

6.2 Non-standard residues in protein, DNA, RNA chains [i](#)

In the following table, the Atoms column lists the number of modelled atoms in the group and the number defined in the chemical component dictionary. The B-factors column lists the minimum, median, 95th percentile and maximum values of B factors of atoms in the group. The column labelled 'Q< 0.9' lists the number of atoms with occupancy less than 0.9.

Mol	Type	Chain	Res	Atoms	RSCC	RSR	B-factors(Å ²)	Q<0.9
1	TPO	A	160	11/12	0.81	0.21	103,109,160,160	0

6.3 Carbohydrates [i](#)

There are no oligosaccharides in this entry.

6.4 Ligands [i](#)

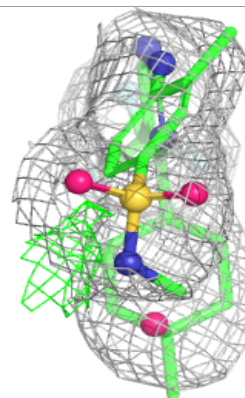
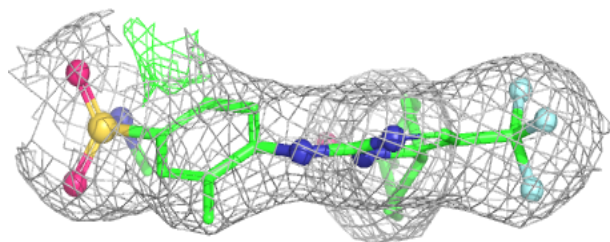
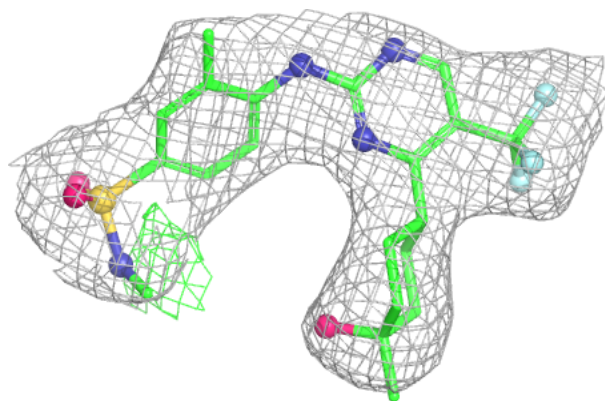
In the following table, the Atoms column lists the number of modelled atoms in the group and the number defined in the chemical component dictionary. The B-factors column lists the minimum, median, 95th percentile and maximum values of B factors of atoms in the group. The column labelled 'Q< 0.9' lists the number of atoms with occupancy less than 0.9.

Mol	Type	Chain	Res	Atoms	RSCC	RSR	B-factors(Å ²)	Q<0.9
4	CIT	B	401	13/13	0.62	0.19	94,100,108,109	0
3	A1B7H	A	301	31/31	0.95	0.09	62,70,79,85	0

The following is a graphical depiction of the model fit to experimental electron density of all instances of the Ligand of Interest. In addition, ligands with molecular weight > 250 and outliers as shown on the geometry validation Tables will also be included. Each fit is shown from different orientation to approximate a three-dimensional view.

Electron density around A1B7H A 301:

$2mF_o-DF_c$ (at 0.7 rmsd) in gray
 mF_o-DF_c (at 3 rmsd) in purple (negative)
and green (positive)



6.5 Other polymers [i](#)

There are no such residues in this entry.