



Full wwPDB EM Validation Report ⓘ

Mar 10, 2026 – 01:36 AM UTC

PDB ID : 9NCN / pdb_00009ncn
EMDB ID : EMD-49260
Title : IN-ML-15 bound to IRzip
Authors : Kirk, N.S.
Deposited on : 2025-02-16
Resolution : 2.86 Å(reported)

This is a Full wwPDB EM Validation Report for a publicly released PDB entry.

We welcome your comments at validation@mail.wwpdb.org

A user guide is available at

<https://www.wwpdb.org/validation/2017/EMValidationReportHelp>

with specific help available everywhere you see the ⓘ symbol.

The types of validation reports are described at

<http://www.wwpdb.org/validation/2017/FAQs#types>.

The following versions of software and data (see [references ⓘ](#)) were used in the production of this report:

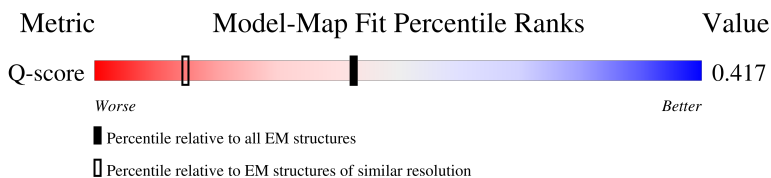
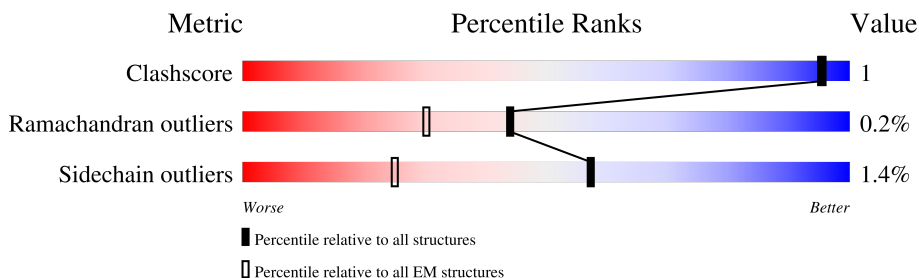
EMDB validation analysis	:	0.0.1.dev132
Mogul	:	2022.3.0, CSD as543be (2022)
MolProbity	:	4-5-2 with Phenix2.0
Percentile statistics	:	20250101.v01 (using entries in the PDB archive January 1st 2025)
EM percentile statistics	:	202505.v01 (Using data in the EMDB archive up until May 2025)
MapQ	:	1.9.13
Ideal geometry (proteins)	:	Engh & Huber (2001)
Ideal geometry (DNA, RNA)	:	Parkinson et al. (1996)
Validation Pipeline (wwPDB-VP)	:	2.49

1 Overall quality at a glance

The following experimental techniques were used to determine the structure:
ELECTRON MICROSCOPY

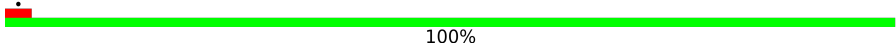
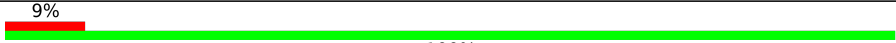
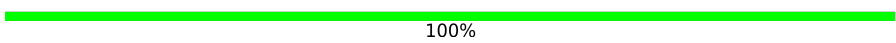
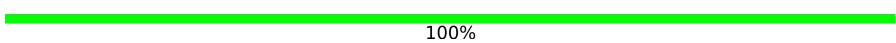
The reported resolution of this entry is 2.86 Å.

Percentile scores (ranging between 0-100) for global validation metrics of the entry are shown in the following graphic. The table shows the number of entries on which the scores are based.





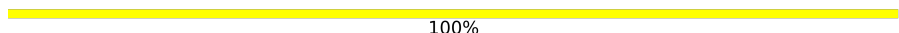
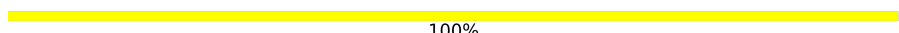
Metric	Whole archive (#Entries)	EM structures (#Entries)	Similar EM resolution (#Entries, resolution range(Å))
Clashscore	229148	23984	-
Ramachandran outliers	224038	23583	-
Sidechain outliers	223484	23102	-
Q-score	-	25397	12017 (2.36 - 3.36)

The table below summarises the geometric issues observed across the polymeric chains and their fit to the map. The red, orange, yellow and green segments of the bar indicate the fraction of residues that contain outliers for ≥ 3 , 2, 1 and 0 types of geometric quality criteria respectively. A grey segment represents the fraction of residues that are not modelled. The numeric value for each fraction is indicated below the corresponding segment, with a dot representing fractions $\leq 5\%$. The upper red bar (where present) indicates the fraction of residues that have poor fit to the EM map (all-atom inclusion $< 40\%$). The numeric value is given above the bar.

Mol	Chain	Length	Quality of chain
1	C	32	 100%
1	D	32	 100%
2	G	21	 100%
2	H	21	 100%

Continued on next page...

Continued from previous page...

Mol	Chain	Length	Quality of chain
3	E	930	 62%35%
3	F	930	 61%35%
4	A	2	 100%
4	B	2	 100%

2 Entry composition

There are 5 unique types of molecules in this entry. The entry contains 10722 atoms, of which 0 are hydrogens and 0 are deuteriums.

In the tables below, the AltConf column contains the number of residues with at least one atom in alternate conformation and the Trace column contains the number of residues modelled with at most 2 atoms.

- Molecule 1 is a protein called IN-ML-15 beta.

Mol	Chain	Residues	Atoms					AltConf	Trace
1	C	32	Total	C	N	O	S	0	0
			255	165	42	46	2		
1	D	32	Total	C	N	O	S	0	0
			255	165	42	46	2		

- Molecule 2 is a protein called IN-ML-15.

Mol	Chain	Residues	Atoms					AltConf	Trace
2	G	21	Total	C	N	O	S	0	0
			163	99	25	35	4		
2	H	21	Total	C	N	O	S	0	0
			163	99	25	35	4		

- Molecule 3 is a protein called Isoform Short of Insulin receptor.

Mol	Chain	Residues	Atoms					AltConf	Trace
3	E	601	Total	C	N	O	S	0	0
			4873	3096	841	895	41		
3	F	601	Total	C	N	O	S	0	0
			4873	3096	841	895	41		

There are 118 discrepancies between the modelled and reference sequences:

Chain	Residue	Modelled	Actual	Comment	Reference
E	144	HIS	TYR	conflict	UNP P06213-2
E	421	THR	ILE	conflict	UNP P06213-2
E	465	LYS	GLN	conflict	UNP P06213-2
E	?	-	VAL	deletion	UNP P06213-2
E	?	-	THR	deletion	UNP P06213-2
E	?	-	VAL	deletion	UNP P06213-2
E	?	-	ALA	deletion	UNP P06213-2
E	?	-	VAL	deletion	UNP P06213-2
E	?	-	PRO	deletion	UNP P06213-2

Continued on next page...

Continued from previous page...

Chain	Residue	Modelled	Actual	Comment	Reference
E	?	-	THR	deletion	UNP P06213-2
E	?	-	VAL	deletion	UNP P06213-2
E	?	-	ALA	deletion	UNP P06213-2
E	?	-	ALA	deletion	UNP P06213-2
E	?	-	PHE	deletion	UNP P06213-2
E	?	-	PRO	deletion	UNP P06213-2
E	?	-	ASN	deletion	UNP P06213-2
E	?	-	THR	deletion	UNP P06213-2
E	?	-	SER	deletion	UNP P06213-2
E	?	-	SER	deletion	UNP P06213-2
E	?	-	THR	deletion	UNP P06213-2
E	?	-	SER	deletion	UNP P06213-2
E	?	-	VAL	deletion	UNP P06213-2
E	731	ALA	PRO	conflict	UNP P06213-2
E	732	GLY	THR	conflict	UNP P06213-2
E	733	ASN	SER	conflict	UNP P06213-2
E	734	ASN	PRO	conflict	UNP P06213-2
E	898	ARG	-	expression tag	UNP P06213-2
E	899	MET	-	expression tag	UNP P06213-2
E	900	LYS	-	expression tag	UNP P06213-2
E	901	GLN	-	expression tag	UNP P06213-2
E	902	LEU	-	expression tag	UNP P06213-2
E	903	GLU	-	expression tag	UNP P06213-2
E	904	ASP	-	expression tag	UNP P06213-2
E	905	LYS	-	expression tag	UNP P06213-2
E	906	VAL	-	expression tag	UNP P06213-2
E	907	GLU	-	expression tag	UNP P06213-2
E	908	GLU	-	expression tag	UNP P06213-2
E	909	LEU	-	expression tag	UNP P06213-2
E	910	LEU	-	expression tag	UNP P06213-2
E	911	SER	-	expression tag	UNP P06213-2
E	912	LYS	-	expression tag	UNP P06213-2
E	913	ASN	-	expression tag	UNP P06213-2
E	914	TYR	-	expression tag	UNP P06213-2
E	915	HIS	-	expression tag	UNP P06213-2
E	916	LEU	-	expression tag	UNP P06213-2
E	917	GLU	-	expression tag	UNP P06213-2
E	918	ASN	-	expression tag	UNP P06213-2
E	919	GLU	-	expression tag	UNP P06213-2
E	920	VAL	-	expression tag	UNP P06213-2
E	921	ALA	-	expression tag	UNP P06213-2
E	922	ARG	-	expression tag	UNP P06213-2

Continued on next page...

Continued from previous page...

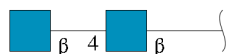
Chain	Residue	Modelled	Actual	Comment	Reference
E	923	LEU	-	expression tag	UNP P06213-2
E	924	LYS	-	expression tag	UNP P06213-2
E	925	LYS	-	expression tag	UNP P06213-2
E	926	LEU	-	expression tag	UNP P06213-2
E	927	VAL	-	expression tag	UNP P06213-2
E	928	GLY	-	expression tag	UNP P06213-2
E	929	GLU	-	expression tag	UNP P06213-2
E	930	ARG	-	expression tag	UNP P06213-2
F	144	HIS	TYR	conflict	UNP P06213-2
F	421	THR	ILE	conflict	UNP P06213-2
F	465	LYS	GLN	conflict	UNP P06213-2
F	?	-	VAL	deletion	UNP P06213-2
F	?	-	THR	deletion	UNP P06213-2
F	?	-	VAL	deletion	UNP P06213-2
F	?	-	ALA	deletion	UNP P06213-2
F	?	-	VAL	deletion	UNP P06213-2
F	?	-	PRO	deletion	UNP P06213-2
F	?	-	THR	deletion	UNP P06213-2
F	?	-	VAL	deletion	UNP P06213-2
F	?	-	ALA	deletion	UNP P06213-2
F	?	-	ALA	deletion	UNP P06213-2
F	?	-	PHE	deletion	UNP P06213-2
F	?	-	PRO	deletion	UNP P06213-2
F	?	-	ASN	deletion	UNP P06213-2
F	?	-	THR	deletion	UNP P06213-2
F	?	-	SER	deletion	UNP P06213-2
F	?	-	SER	deletion	UNP P06213-2
F	?	-	THR	deletion	UNP P06213-2
F	?	-	SER	deletion	UNP P06213-2
F	?	-	VAL	deletion	UNP P06213-2
F	731	ALA	PRO	conflict	UNP P06213-2
F	732	GLY	THR	conflict	UNP P06213-2
F	733	ASN	SER	conflict	UNP P06213-2
F	734	ASN	PRO	conflict	UNP P06213-2
F	898	ARG	-	expression tag	UNP P06213-2
F	899	MET	-	expression tag	UNP P06213-2
F	900	LYS	-	expression tag	UNP P06213-2
F	901	GLN	-	expression tag	UNP P06213-2
F	902	LEU	-	expression tag	UNP P06213-2
F	903	GLU	-	expression tag	UNP P06213-2
F	904	ASP	-	expression tag	UNP P06213-2
F	905	LYS	-	expression tag	UNP P06213-2

Continued on next page...

Continued from previous page...

Chain	Residue	Modelled	Actual	Comment	Reference
F	906	VAL	-	expression tag	UNP P06213-2
F	907	GLU	-	expression tag	UNP P06213-2
F	908	GLU	-	expression tag	UNP P06213-2
F	909	LEU	-	expression tag	UNP P06213-2
F	910	LEU	-	expression tag	UNP P06213-2
F	911	SER	-	expression tag	UNP P06213-2
F	912	LYS	-	expression tag	UNP P06213-2
F	913	ASN	-	expression tag	UNP P06213-2
F	914	TYR	-	expression tag	UNP P06213-2
F	915	HIS	-	expression tag	UNP P06213-2
F	916	LEU	-	expression tag	UNP P06213-2
F	917	GLU	-	expression tag	UNP P06213-2
F	918	ASN	-	expression tag	UNP P06213-2
F	919	GLU	-	expression tag	UNP P06213-2
F	920	VAL	-	expression tag	UNP P06213-2
F	921	ALA	-	expression tag	UNP P06213-2
F	922	ARG	-	expression tag	UNP P06213-2
F	923	LEU	-	expression tag	UNP P06213-2
F	924	LYS	-	expression tag	UNP P06213-2
F	925	LYS	-	expression tag	UNP P06213-2
F	926	LEU	-	expression tag	UNP P06213-2
F	927	VAL	-	expression tag	UNP P06213-2
F	928	GLY	-	expression tag	UNP P06213-2
F	929	GLU	-	expression tag	UNP P06213-2
F	930	ARG	-	expression tag	UNP P06213-2

- Molecule 4 is an oligosaccharide called 2-acetamido-2-deoxy-beta-D-glucopyranose-(1-4)-2-acetamido-2-deoxy-beta-D-glucopyranose.



Mol	Chain	Residues	Atoms				AltConf	Trace
4	A	2	Total	C	N	O	0	0
			28	16	2	10		
4	B	2	Total	C	N	O	0	0
			28	16	2	10		

- Molecule 5 is 2-acetamido-2-deoxy-beta-D-glucopyranose (CCD ID: NAG) (formula: C₈H₁₅NO₆).



Mol	Chain	Residues	Atoms				AltConf
5	E	1	Total	C	N	O	0
			14	8	1	5	
5	E	1	Total	C	N	O	0
			14	8	1	5	
5	E	1	Total	C	N	O	0
			14	8	1	5	
5	F	1	Total	C	N	O	0
			14	8	1	5	
5	F	1	Total	C	N	O	0
			14	8	1	5	
5	F	1	Total	C	N	O	0
			14	8	1	5	

3 Residue-property plots [i](#)

These plots are drawn for all protein, RNA, DNA and oligosaccharide chains in the entry. The first graphic for a chain summarises the proportions of the various outlier classes displayed in the second graphic. The second graphic shows the sequence view annotated by issues in geometry and atom inclusion in map density. Residues are color-coded according to the number of geometric quality criteria for which they contain at least one outlier: green = 0, yellow = 1, orange = 2 and red = 3 or more. A red diamond above a residue indicates a poor fit to the EM map for this residue (all-atom inclusion < 40%). Stretches of 2 or more consecutive residues without any outlier are shown as a green connector. Residues present in the sample, but not in the model, are shown in grey.

- Molecule 1: IN-ML-15 beta

Chain C:  100%



- Molecule 1: IN-ML-15 beta

Chain D:  100%



- Molecule 2: IN-ML-15

Chain G:  100%

There are no outlier residues recorded for this chain.

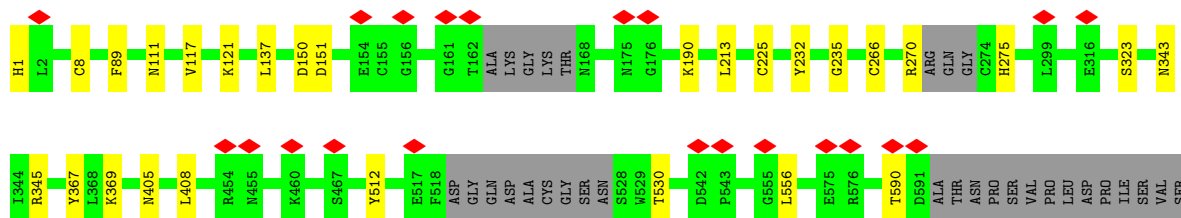
- Molecule 2: IN-ML-15

Chain H:  100%

There are no outlier residues recorded for this chain.

- Molecule 3: Isoform Short of Insulin receptor

Chain E:  62% 35%



- Molecule 4: 2-acetamido-2-deoxy-beta-D-glucopyranose-(1-4)-2-acetamido-2-deoxy-beta-D-glucopyranose

Chain B:

100%

MAG1
MAG2

4 Experimental information

Property	Value	Source
EM reconstruction method	SINGLE PARTICLE	Depositor
Imposed symmetry	POINT, C2	Depositor
Number of particles used	350000	Depositor
Resolution determination method	FSC 0.143 CUT-OFF	Depositor
CTF correction method	PHASE FLIPPING AND AMPLITUDE CORRECTION	Depositor
Microscope	TFS KRIOS	Depositor
Voltage (kV)	300	Depositor
Electron dose ($e^-/\text{\AA}^2$)	50	Depositor
Minimum defocus (nm)	500	Depositor
Maximum defocus (nm)	2000	Depositor
Magnification	Not provided	
Image detector	GATAN K3 BIOCONTINUUM (6k x 4k)	Depositor
Maximum map value	0.196	Depositor
Minimum map value	-0.129	Depositor
Average map value	-0.000	Depositor
Map value standard deviation	0.003	Depositor
Recommended contour level	0.02	Depositor
Map size (Å)	299.88, 299.88, 299.88	wwPDB
Map dimensions	360, 360, 360	wwPDB
Map angles (°)	90.0, 90.0, 90.0	wwPDB
Pixel spacing (Å)	0.833, 0.833, 0.833	Depositor

5 Model quality [i](#)

5.1 Standard geometry [i](#)

Bond lengths and bond angles in the following residue types are not validated in this section: NAG, DHI

The Z score for a bond length (or angle) is the number of standard deviations the observed value is removed from the expected value. A bond length (or angle) with $|Z| > 5$ is considered an outlier worth inspection. RMSZ is the root-mean-square of all Z scores of the bond lengths (or angles).

Mol	Chain	Bond lengths		Bond angles	
		RMSZ	$\# Z > 5$	RMSZ	$\# Z > 5$
1	C	0.10	0/250	0.31	0/336
1	D	0.11	0/250	0.45	0/336
2	G	0.09	0/164	0.36	0/220
2	H	0.10	0/164	0.44	0/220
3	E	0.14	0/4990	0.44	0/6757
3	F	0.14	0/4990	0.43	0/6757
All	All	0.14	0/10808	0.43	0/14626

There are no bond length outliers.

There are no bond angle outliers.

There are no chirality outliers.

There are no planarity outliers.

5.2 Too-close contacts [i](#)

In the following table, the Non-H and H(model) columns list the number of non-hydrogen atoms and hydrogen atoms in the chain respectively. The H(added) column lists the number of hydrogen atoms added and optimized by MolProbity. The Clashes column lists the number of clashes within the asymmetric unit, whereas Symm-Clashes lists symmetry-related clashes.

Mol	Chain	Non-H	H(model)	H(added)	Clashes	Symm-Clashes
1	C	255	0	242	0	0
1	D	255	0	242	0	0
2	G	163	0	146	0	0
2	H	163	0	146	0	0
3	E	4873	0	4745	10	0
3	F	4873	0	4745	12	0
4	A	28	0	25	0	0

Continued on next page...

Continued from previous page...

Mol	Chain	Non-H	H(model)	H(added)	Clashes	Symm-Clashes
4	B	28	0	25	0	0
5	E	42	0	39	1	0
5	F	42	0	39	0	0
All	All	10722	0	10394	21	0

The all-atom clashscore is defined as the number of clashes found per 1000 atoms (including hydrogen atoms). The all-atom clashscore for this structure is 1.

All (21) close contacts within the same asymmetric unit are listed below, sorted by their clash magnitude.

Atom-1	Atom-2	Interatomic distance (Å)	Clash overlap (Å)
3:E:111:ASN:HD22	3:E:213:LEU:HD11	1.66	0.60
3:E:367:TYR:CE2	3:E:369:LYS:HB2	2.38	0.58
3:F:367:TYR:CE2	3:F:369:LYS:HB2	2.38	0.58
3:E:121:LYS:NZ	3:F:706:GLU:OE2	2.33	0.58
3:F:1:HIS:N	3:F:225:CYS:O	2.44	0.50
3:F:150:ASP:OD1	3:F:151:ASP:N	2.44	0.50
3:F:77:PRO:O	3:F:108:ASN:ND2	2.39	0.49
3:E:150:ASP:OD1	3:E:151:ASP:N	2.46	0.47
3:F:66:VAL:HB	3:F:98:MET:HE1	1.96	0.47
3:E:190:LYS:HD2	5:E:1003:NAG:H82	1.97	0.46
3:E:1:HIS:N	3:E:225:CYS:O	2.49	0.46
3:F:127:TYR:H	3:F:157:ASP:CG	2.26	0.43
3:F:263:HIS:CE1	3:F:276:GLN:HE21	2.37	0.43
3:F:336:ILE:HD13	3:F:340:LEU:HD21	2.03	0.41
3:E:117:VAL:HG23	3:E:137:LEU:HD11	2.03	0.41
3:F:20:LEU:HG	3:F:51:PHE:CZ	2.56	0.41
3:E:89:PHE:O	3:E:323:SER:HB2	2.21	0.40
3:F:370:ILE:CG2	3:F:405:ASN:HD21	2.34	0.40
3:F:484:LYS:HE2	3:F:484:LYS:HB2	1.92	0.40
3:E:232:TYR:CE2	3:E:235:GLY:HA2	2.57	0.40
3:E:405:ASN:CG	3:E:408:LEU:HB2	2.46	0.40

There are no symmetry-related clashes.

5.3 Torsion angles

5.3.1 Protein backbone

In the following table, the Percentiles column shows the percent Ramachandran outliers of the chain as a percentile score with respect to all PDB entries followed by that with respect to all EM entries.

The Analysed column shows the number of residues for which the backbone conformation was analysed, and the total number of residues.

Mol	Chain	Analysed	Favoured	Allowed	Outliers	Percentiles	
1	C	29/32 (91%)	28 (97%)	1 (3%)	0	100	100
1	D	29/32 (91%)	27 (93%)	2 (7%)	0	100	100
2	G	19/21 (90%)	18 (95%)	1 (5%)	0	100	100
2	H	19/21 (90%)	19 (100%)	0	0	100	100
3	E	591/930 (64%)	544 (92%)	46 (8%)	1 (0%)	43	62
3	F	591/930 (64%)	551 (93%)	39 (7%)	1 (0%)	43	62
All	All	1278/1966 (65%)	1187 (93%)	89 (7%)	2 (0%)	44	62

All (2) Ramachandran outliers are listed below:

Mol	Chain	Res	Type
3	E	8	CYS
3	F	8	CYS

5.3.2 Protein sidechains

In the following table, the Percentiles column shows the percent sidechain outliers of the chain as a percentile score with respect to all PDB entries followed by that with respect to all EM entries.

The Analysed column shows the number of residues for which the sidechain conformation was analysed, and the total number of residues.

Mol	Chain	Analysed	Rotameric	Outliers	Percentiles	
1	C	26/26 (100%)	26 (100%)	0	100	100
1	D	26/26 (100%)	26 (100%)	0	100	100
2	G	20/20 (100%)	20 (100%)	0	100	100
2	H	20/20 (100%)	20 (100%)	0	100	100
3	E	552/843 (66%)	543 (98%)	9 (2%)	55	76

Continued on next page...

Continued from previous page...

Mol	Chain	Analysed	Rotameric	Outliers	Percentiles
3	F	552/843 (66%)	544 (99%)	8 (1%)	59 78
All	All	1196/1778 (67%)	1179 (99%)	17 (1%)	57 78

All (17) residues with a non-rotameric sidechain are listed below:

Mol	Chain	Res	Type
3	E	266	CYS
3	E	270	ARG
3	E	275	HIS
3	E	343	ASN
3	E	345	ARG
3	E	512	TYR
3	E	530	THR
3	E	556	LEU
3	E	590	THR
3	F	275	HIS
3	F	318	GLU
3	F	343	ASN
3	F	512	TYR
3	F	530	THR
3	F	539	ARG
3	F	556	LEU
3	F	590	THR

Sometimes sidechains can be flipped to improve hydrogen bonding and reduce clashes. All (11) such sidechains are listed below:

Mol	Chain	Res	Type
3	E	15	ASN
3	E	357	ASN
3	F	144	HIS
3	F	175	ASN
3	F	276	GLN
3	F	405	ASN
3	F	406	GLN
3	F	470	ASN
3	F	513	GLN
3	F	561	GLN
3	F	711	ASN

5.3.3 RNA ⓘ

There are no RNA molecules in this entry.

5.4 Non-standard residues in protein, DNA, RNA chains ⓘ

2 non-standard protein/DNA/RNA residues are modelled in this entry.

There are no bond length outliers.

There are no bond angle outliers.

There are no chirality outliers.

There are no torsion outliers.

There are no ring outliers.

No monomer is involved in short contacts.

5.5 Carbohydrates ⓘ

4 monosaccharides are modelled in this entry.

In the following table, the Counts columns list the number of bonds (or angles) for which Mogul statistics could be retrieved, the number of bonds (or angles) that are observed in the model and the number of bonds (or angles) that are defined in the Chemical Component Dictionary. The Link column lists molecule types, if any, to which the group is linked. The Z score for a bond length (or angle) is the number of standard deviations the observed value is removed from the expected value. A bond length (or angle) with $|Z| > 2$ is considered an outlier worth inspection. RMSZ is the root-mean-square of all Z scores of the bond lengths (or angles).

Mol	Type	Chain	Res	Link	Bond lengths			Bond angles		
					Counts	RMSZ	$\# Z > 2$	Counts	RMSZ	$\# Z > 2$
4	NAG	A	1	3,4	14,14,15	0.71	0	17,19,21	1.64	3 (17%)
4	NAG	A	2	4	14,14,15	0.65	0	17,19,21	1.72	3 (17%)
4	NAG	B	1	3,4	14,14,15	0.68	0	17,19,21	2.12	3 (17%)
4	NAG	B	2	4	14,14,15	0.69	0	17,19,21	0.85	1 (5%)

In the following table, the Chirals column lists the number of chiral outliers, the number of chiral centers analysed, the number of these observed in the model and the number defined in the Chemical Component Dictionary. Similar counts are reported in the Torsion and Rings columns. '-' means no outliers of that kind were identified.

Mol	Type	Chain	Res	Link	Chirals	Torsions	Rings
4	NAG	A	1	3,4	-	1/6/23/26	0/1/1/1

Continued on next page...

Continued from previous page...

Mol	Type	Chain	Res	Link	Chirals	Torsions	Rings
4	NAG	A	2	4	-	2/6/23/26	0/1/1/1
4	NAG	B	1	3,4	-	2/6/23/26	0/1/1/1
4	NAG	B	2	4	-	1/6/23/26	0/1/1/1

There are no bond length outliers.

All (10) bond angle outliers are listed below:

Mol	Chain	Res	Type	Atoms	Z	Observed(°)	Ideal(°)
4	B	1	NAG	O5-C1-C2	-5.37	102.99	111.29
4	A	1	NAG	C1-O5-C5	5.21	119.17	112.19
4	A	2	NAG	C1-O5-C5	4.82	118.64	112.19
4	B	1	NAG	C1-C2-N2	3.76	116.36	110.43
4	B	1	NAG	C2-N2-C7	3.73	127.89	122.90
4	A	2	NAG	C2-N2-C7	3.22	127.22	122.90
4	B	2	NAG	C1-O5-C5	2.18	115.11	112.19
4	A	2	NAG	C4-C3-C2	-2.12	107.91	111.02
4	A	1	NAG	C1-C2-N2	2.11	113.76	110.43
4	A	1	NAG	O4-C4-C5	2.09	114.46	109.32

There are no chirality outliers.

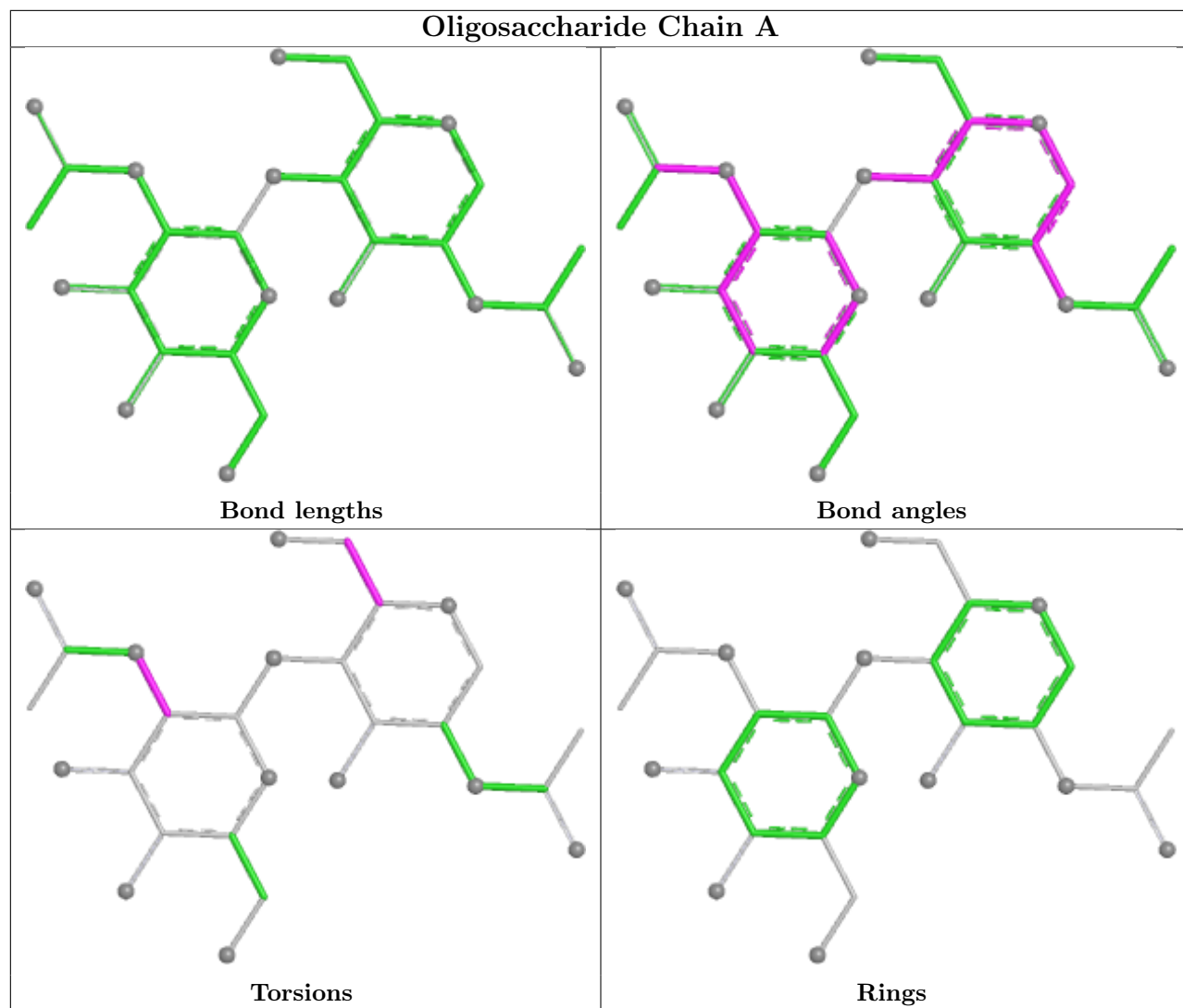
All (6) torsion outliers are listed below:

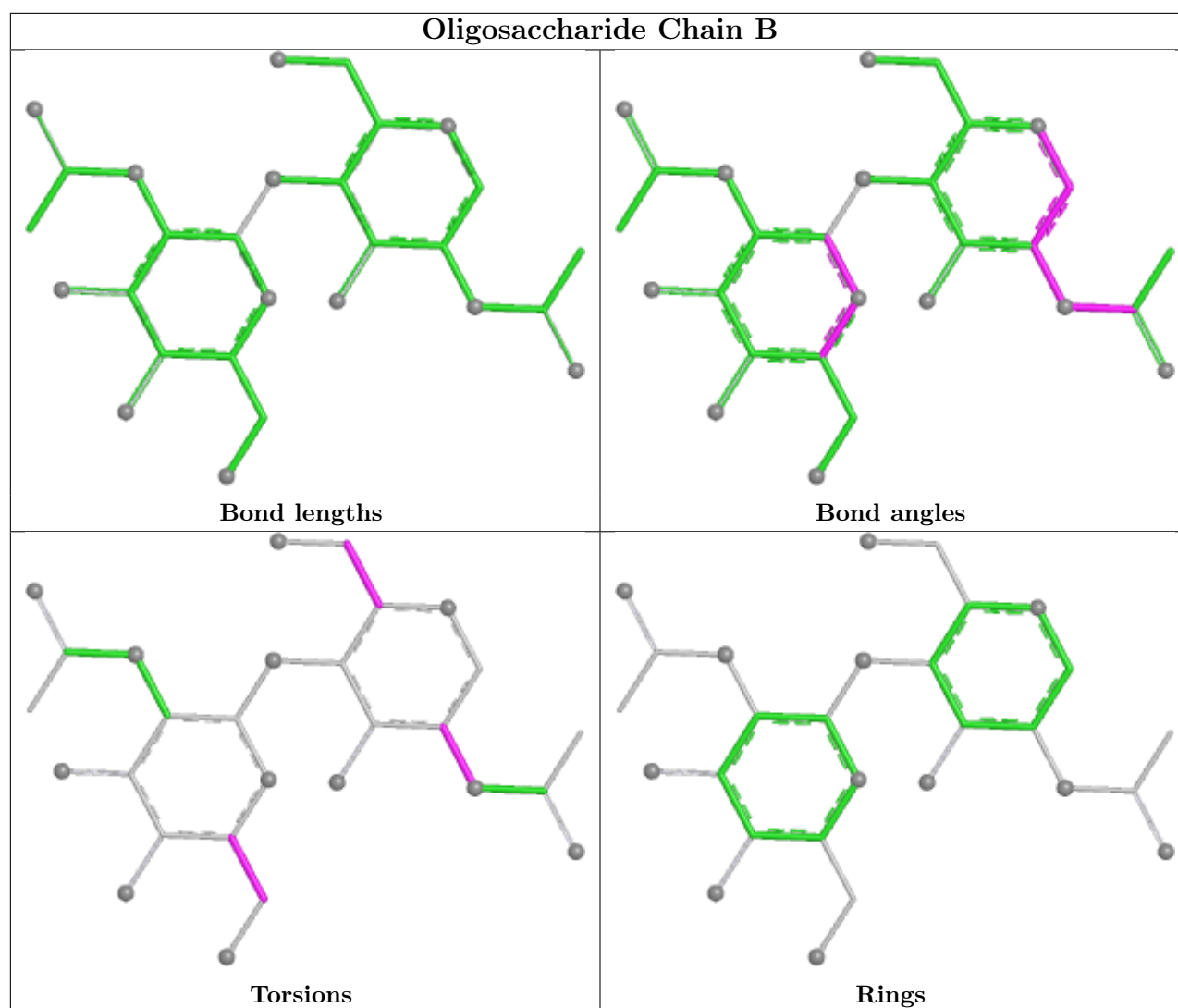
Mol	Chain	Res	Type	Atoms
4	A	1	NAG	O5-C5-C6-O6
4	B	1	NAG	O5-C5-C6-O6
4	B	1	NAG	C3-C2-N2-C7
4	A	2	NAG	C1-C2-N2-C7
4	A	2	NAG	C3-C2-N2-C7
4	B	2	NAG	O5-C5-C6-O6

There are no ring outliers.

No monomer is involved in short contacts.

The following is a two-dimensional graphical depiction of Mogul quality analysis of bond lengths, bond angles, torsion angles, and ring geometry for oligosaccharide.





5.6 Ligand geometry [i](#)

6 ligands are modelled in this entry.

In the following table, the Counts columns list the number of bonds (or angles) for which Mogul statistics could be retrieved, the number of bonds (or angles) that are observed in the model and the number of bonds (or angles) that are defined in the Chemical Component Dictionary. The Link column lists molecule types, if any, to which the group is linked. The Z score for a bond length (or angle) is the number of standard deviations the observed value is removed from the expected value. A bond length (or angle) with $|Z| > 2$ is considered an outlier worth inspection. RMSZ is the root-mean-square of all Z scores of the bond lengths (or angles).

Mol	Type	Chain	Res	Link	Bond lengths			Bond angles		
					Counts	RMSZ	$\# Z > 2$	Counts	RMSZ	$\# Z > 2$
5	NAG	E	1001	3	14,14,15	0.67	0	17,19,21	0.83	1 (5%)
5	NAG	F	1001	3	14,14,15	0.74	0	17,19,21	1.10	2 (11%)
5	NAG	E	1002	3	14,14,15	0.67	0	17,19,21	1.31	2 (11%)

Mol	Type	Chain	Res	Link	Bond lengths			Bond angles		
					Counts	RMSZ	# Z > 2	Counts	RMSZ	# Z > 2
5	NAG	E	1003	3	14,14,15	0.76	0	17,19,21	1.12	1 (5%)
5	NAG	F	1002	3	14,14,15	0.65	0	17,19,21	0.86	1 (5%)
5	NAG	F	1003	3	14,14,15	0.77	0	17,19,21	1.68	2 (11%)

In the following table, the Chirals column lists the number of chiral outliers, the number of chiral centers analysed, the number of these observed in the model and the number defined in the Chemical Component Dictionary. Similar counts are reported in the Torsion and Rings columns. '-' means no outliers of that kind were identified.

Mol	Type	Chain	Res	Link	Chirals	Torsions	Rings
5	NAG	E	1001	3	-	0/6/23/26	0/1/1/1
5	NAG	F	1001	3	-	1/6/23/26	0/1/1/1
5	NAG	E	1002	3	-	3/6/23/26	0/1/1/1
5	NAG	E	1003	3	-	1/6/23/26	0/1/1/1
5	NAG	F	1002	3	-	0/6/23/26	0/1/1/1
5	NAG	F	1003	3	-	1/6/23/26	0/1/1/1

There are no bond length outliers.

All (9) bond angle outliers are listed below:

Mol	Chain	Res	Type	Atoms	Z	Observed(°)	Ideal(°)
5	F	1003	NAG	C1-O5-C5	5.53	119.60	112.19
5	E	1003	NAG	C1-O5-C5	3.57	116.97	112.19
5	F	1001	NAG	C1-O5-C5	3.22	116.50	112.19
5	F	1003	NAG	C2-N2-C7	2.94	126.83	122.90
5	E	1002	NAG	C2-N2-C7	2.93	126.83	122.90
5	F	1001	NAG	C2-N2-C7	2.48	126.23	122.90
5	E	1002	NAG	C1-O5-C5	2.46	115.48	112.19
5	F	1002	NAG	C1-O5-C5	2.38	115.37	112.19
5	E	1001	NAG	C1-O5-C5	2.34	115.32	112.19

There are no chirality outliers.

All (6) torsion outliers are listed below:

Mol	Chain	Res	Type	Atoms
5	E	1002	NAG	C1-C2-N2-C7
5	E	1002	NAG	O5-C5-C6-O6
5	F	1001	NAG	O5-C5-C6-O6
5	E	1002	NAG	C3-C2-N2-C7
5	E	1003	NAG	O5-C5-C6-O6

Continued on next page...

Continued from previous page...

Mol	Chain	Res	Type	Atoms
5	F	1003	NAG	O5-C5-C6-O6

There are no ring outliers.

1 monomer is involved in 1 short contact:

Mol	Chain	Res	Type	Clashes	Symm-Clashes
5	E	1003	NAG	1	0

5.7 Other polymers [i](#)

There are no such residues in this entry.

5.8 Polymer linkage issues [i](#)

There are no chain breaks in this entry.

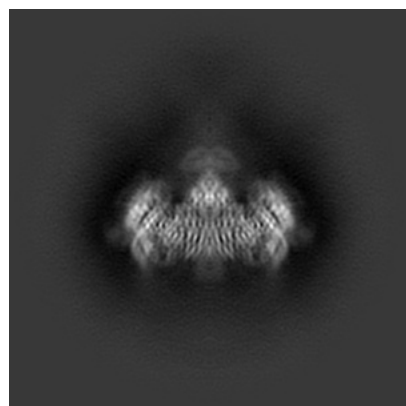
6 Map visualisation [i](#)

This section contains visualisations of the EMDB entry EMD-49260. These allow visual inspection of the internal detail of the map and identification of artifacts.

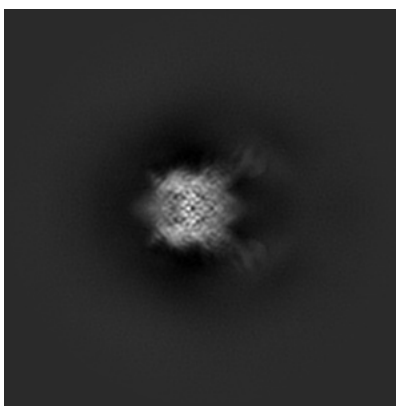
Images derived from a raw map, generated by summing the deposited half-maps, are presented below the corresponding image components of the primary map to allow further visual inspection and comparison with those of the primary map.

6.1 Orthogonal projections [i](#)

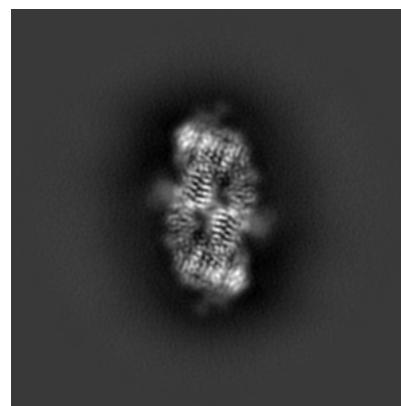
6.1.1 Primary map



X

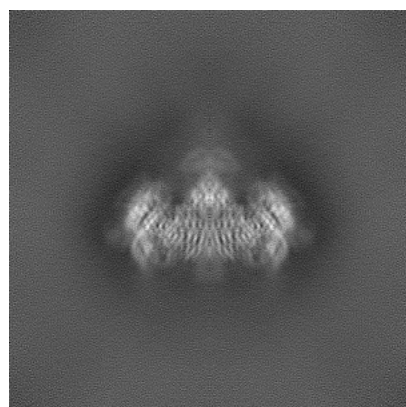


Y

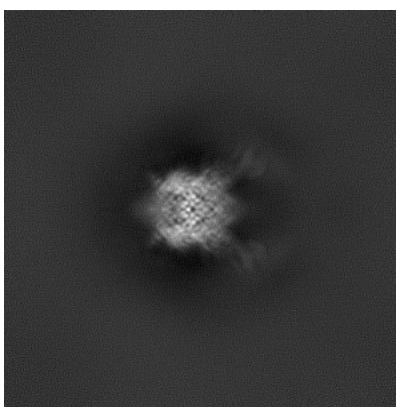


Z

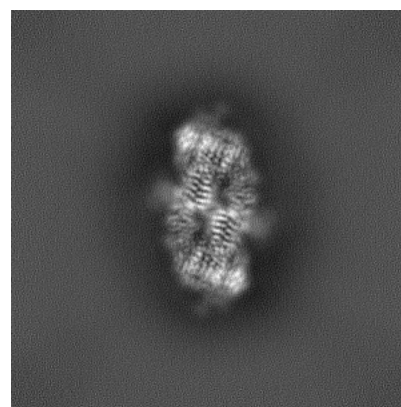
6.1.2 Raw map



X



Y

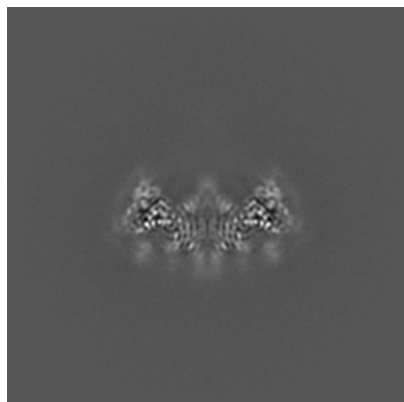


Z

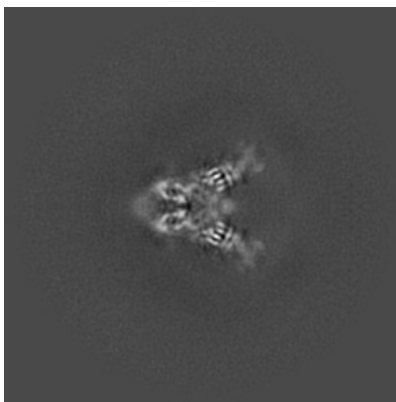
The images above show the map projected in three orthogonal directions.

6.2 Central slices [i](#)

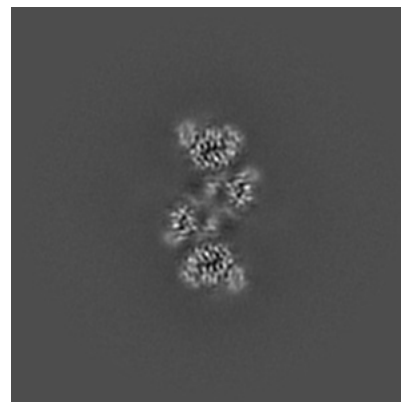
6.2.1 Primary map



X Index: 180

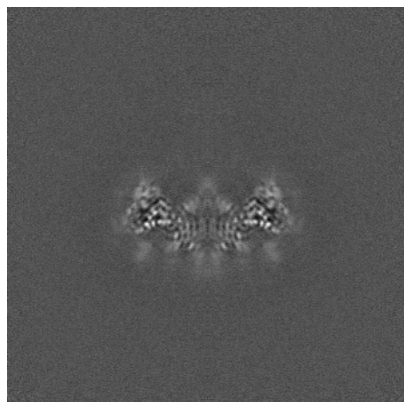


Y Index: 180

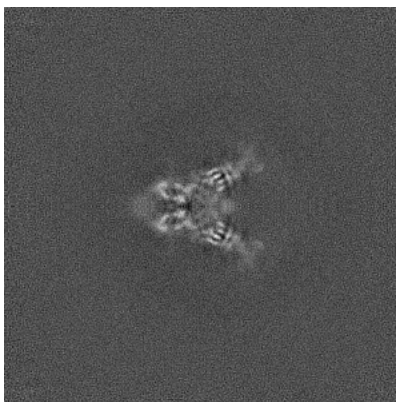


Z Index: 180

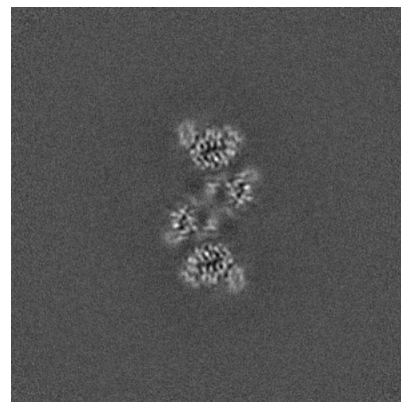
6.2.2 Raw map



X Index: 180



Y Index: 180

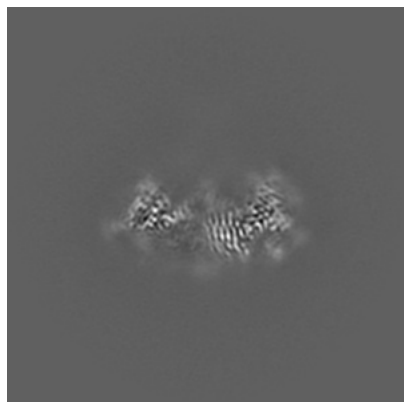


Z Index: 180

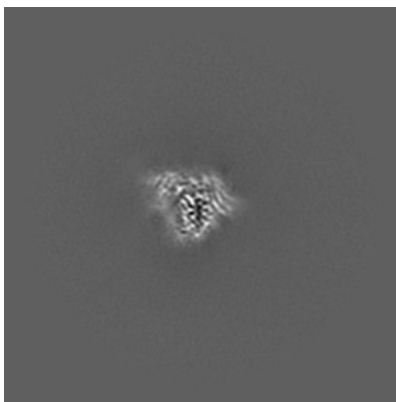
The images above show central slices of the map in three orthogonal directions.

6.3 Largest variance slices [i](#)

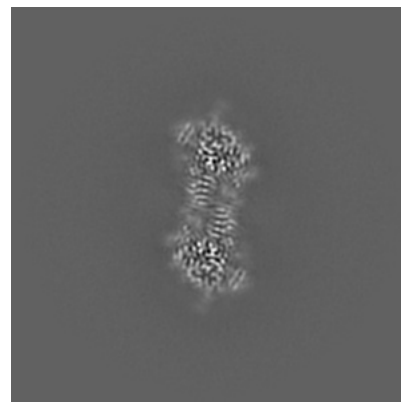
6.3.1 Primary map



X Index: 174

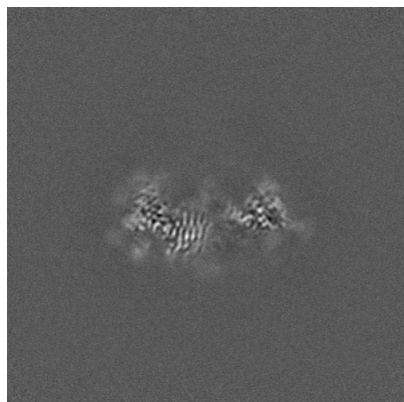


Y Index: 123

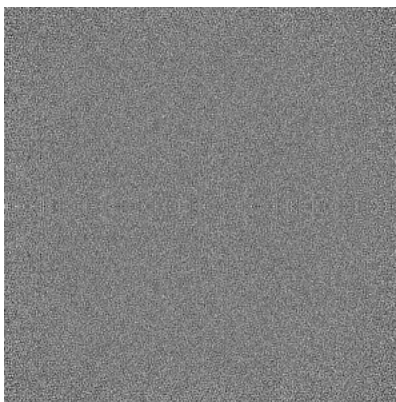


Z Index: 166

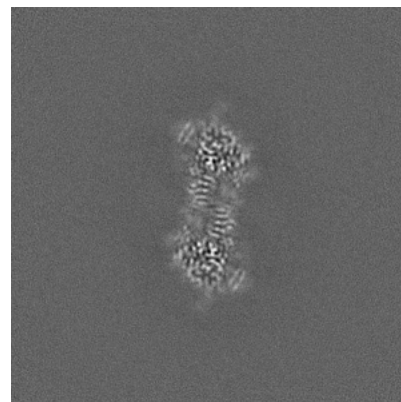
6.3.2 Raw map



X Index: 186



Y Index: 0

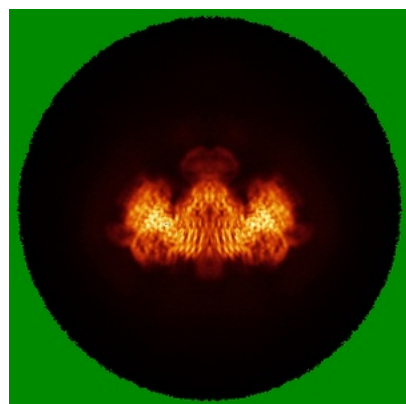


Z Index: 166

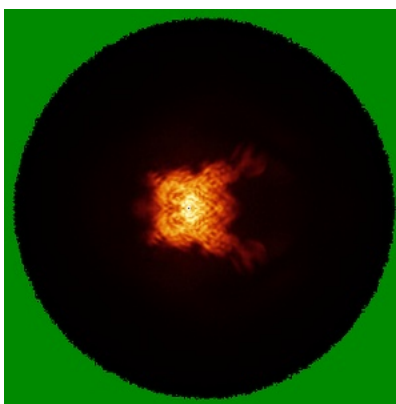
The images above show the largest variance slices of the map in three orthogonal directions.

6.4 Orthogonal standard-deviation projections (False-color) ⓘ

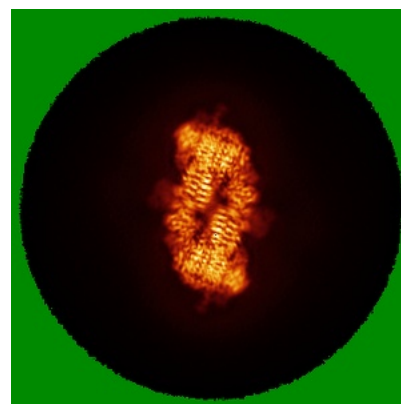
6.4.1 Primary map



X

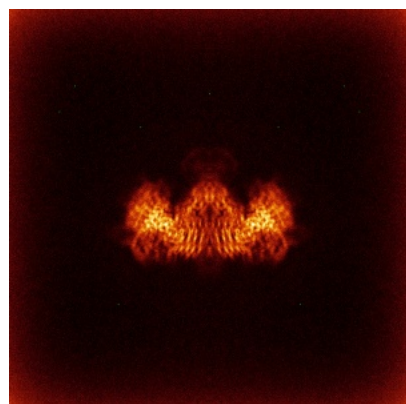


Y

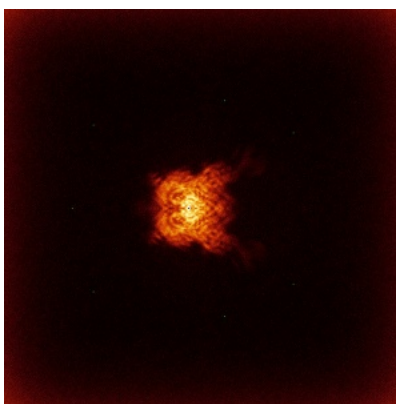


Z

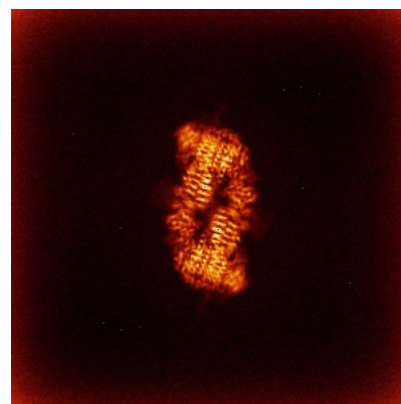
6.4.2 Raw map



X



Y



Z

The images above show the map standard deviation projections with false color in three orthogonal directions. Minimum values are shown in green, max in blue, and dark to light orange shades represent small to large values respectively.

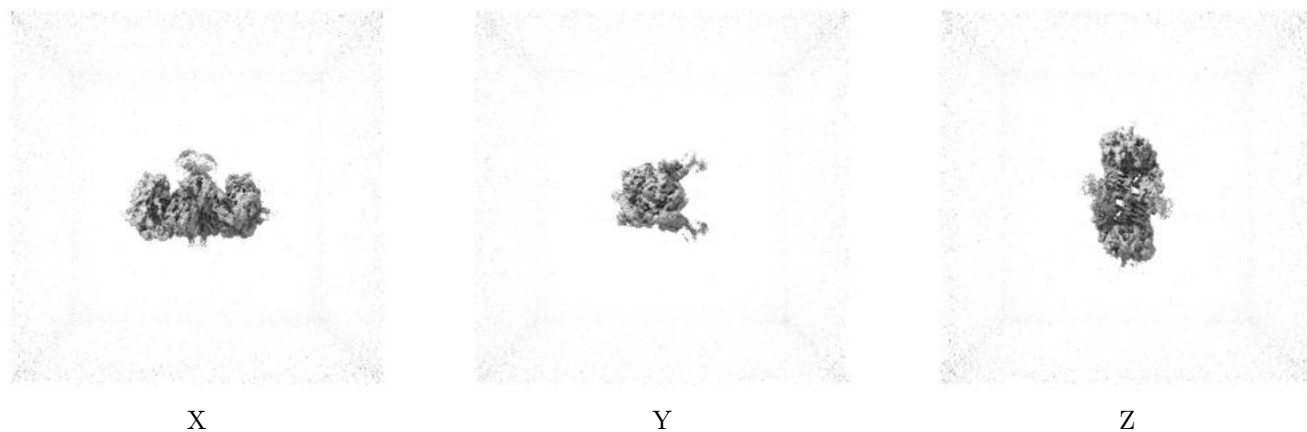
6.5 Orthogonal surface views [i](#)

6.5.1 Primary map



The images above show the 3D surface view of the map at the recommended contour level 0.02. These images, in conjunction with the slice images, may facilitate assessment of whether an appropriate contour level has been provided.

6.5.2 Raw map



These images show the 3D surface of the raw map. The raw map's contour level was selected so that its surface encloses the same volume as the primary map does at its recommended contour level.

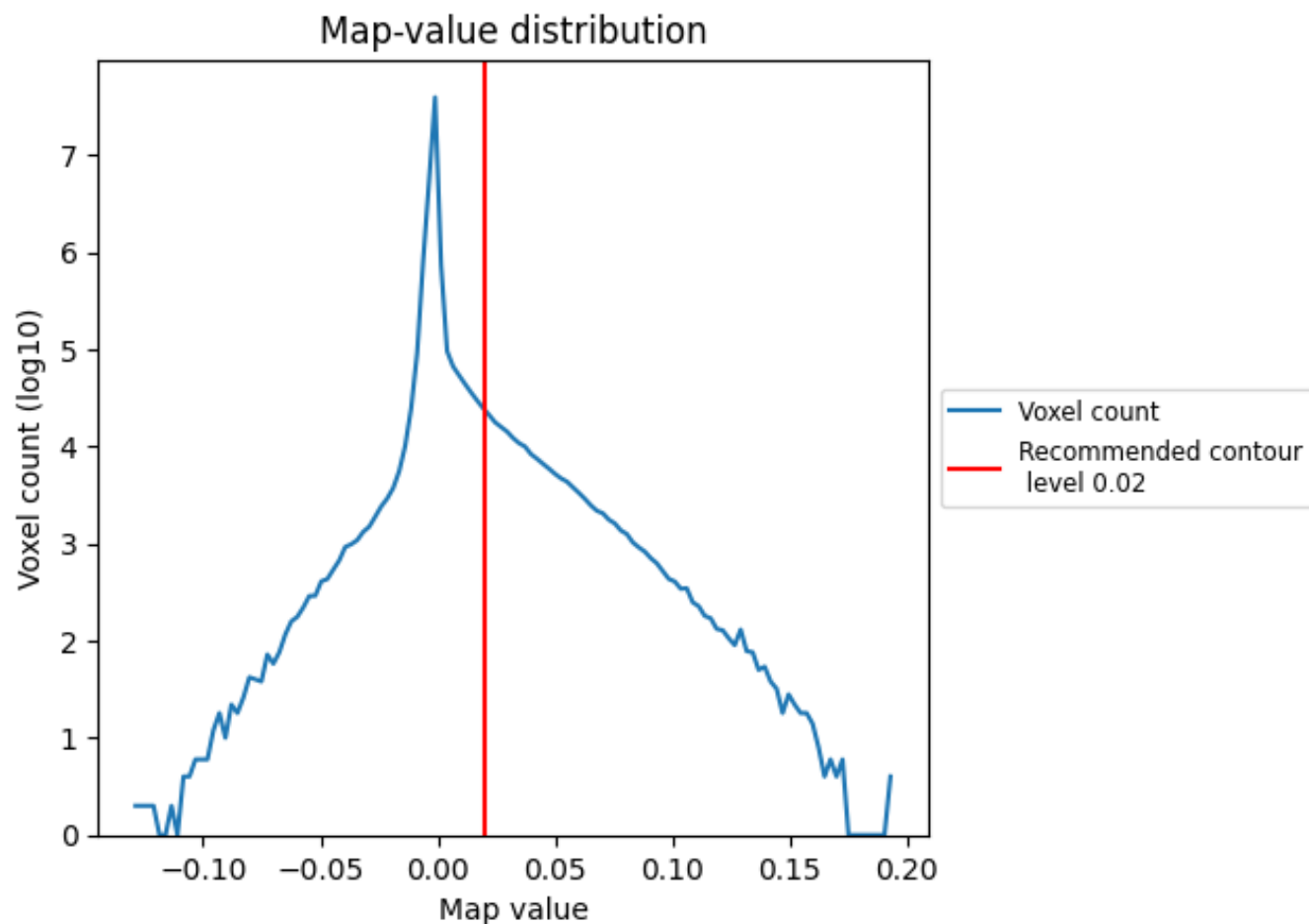
6.6 Mask visualisation [i](#)

This section was not generated. No masks/segmentation were deposited.

7 Map analysis [i](#)

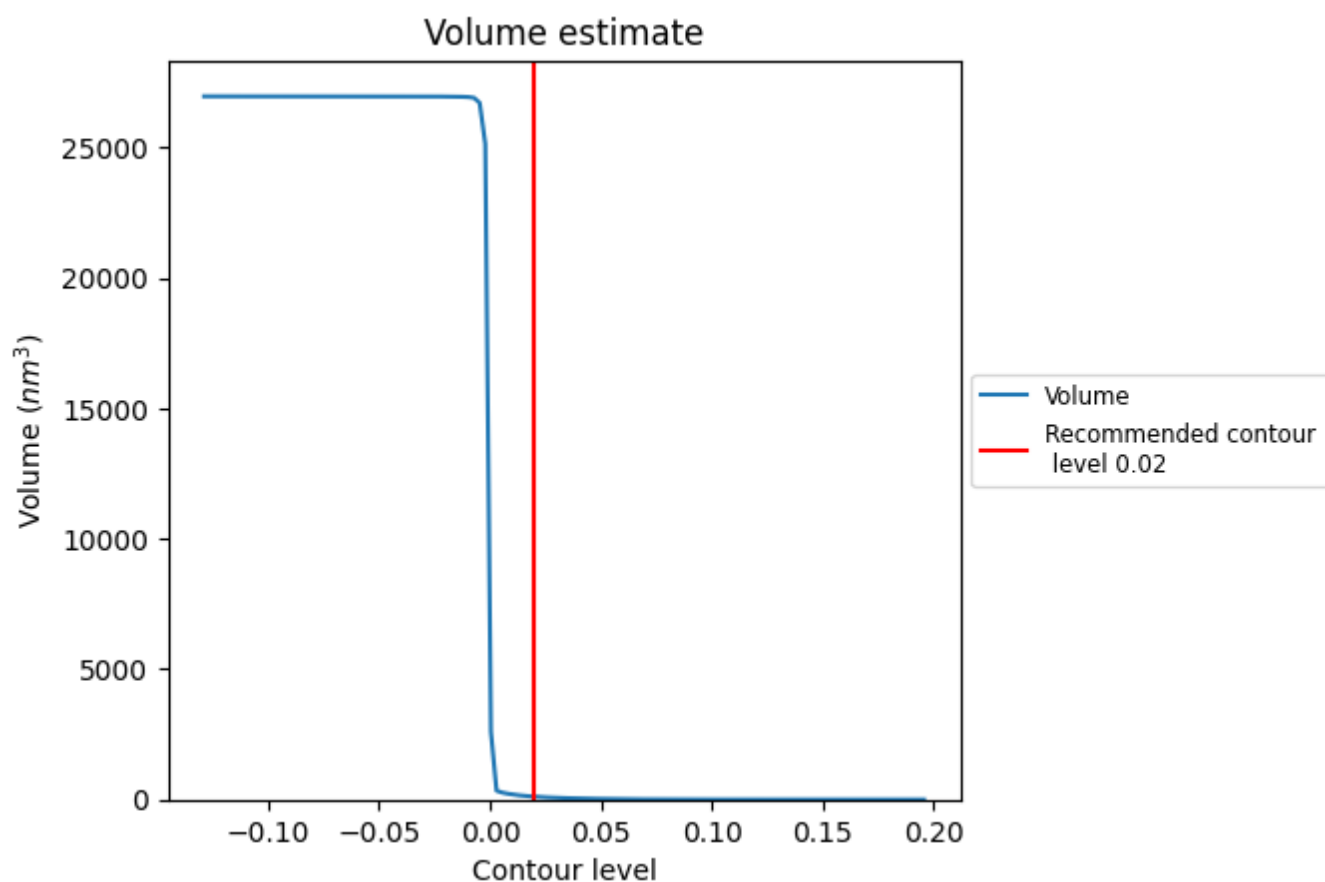
This section contains the results of statistical analysis of the map.

7.1 Map-value distribution [i](#)



The map-value distribution is plotted in 128 intervals along the x-axis. The y-axis is logarithmic. A spike in this graph at zero usually indicates that the volume has been masked.

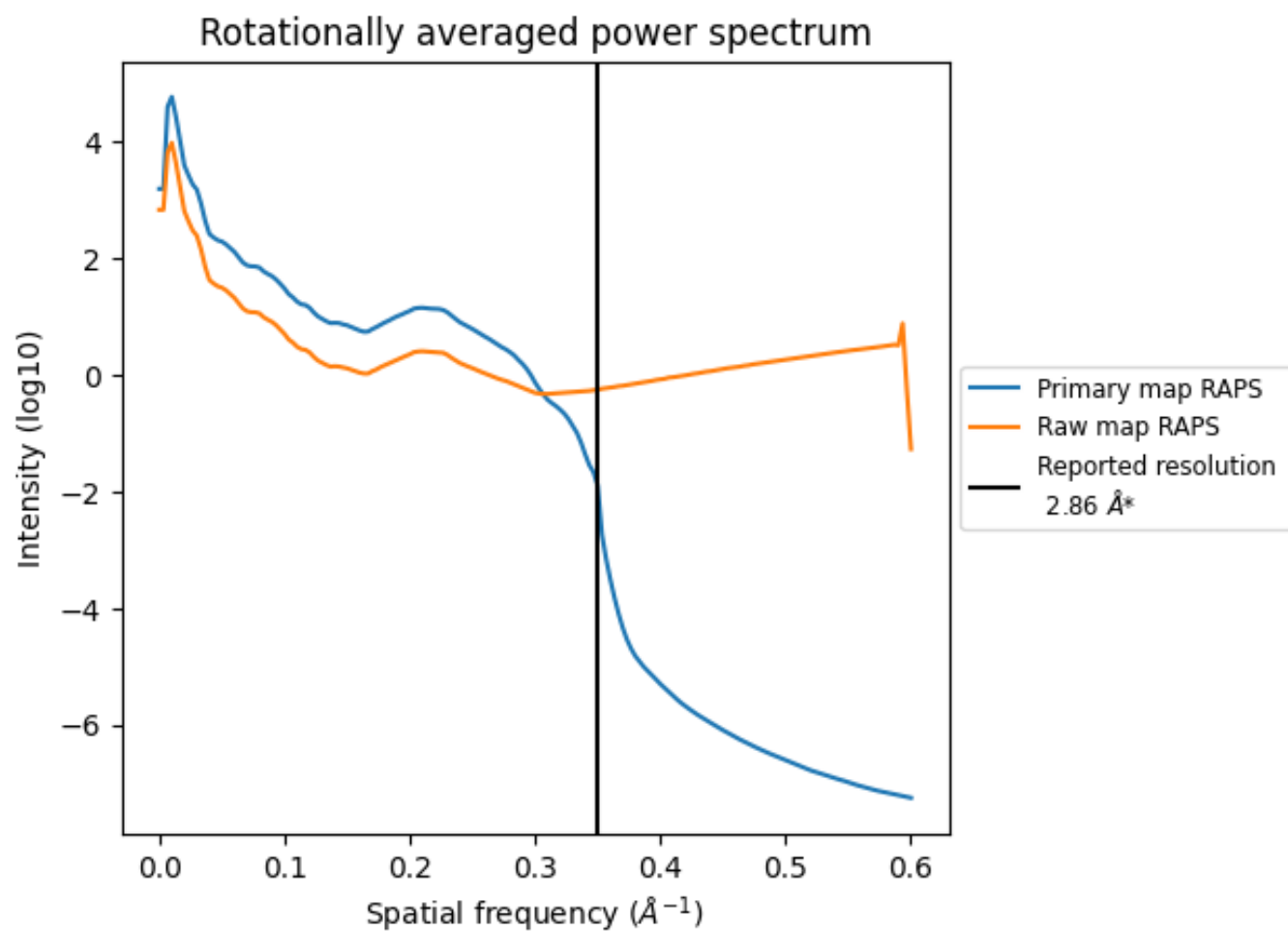
7.2 Volume estimate [i](#)



The volume at the recommended contour level is 112 nm^3 ; this corresponds to an approximate mass of 101 kDa.

The volume estimate graph shows how the enclosed volume varies with the contour level. The recommended contour level is shown as a vertical line and the intersection between the line and the curve gives the volume of the enclosed surface at the given level.

7.3 Rotationally averaged power spectrum ⓘ

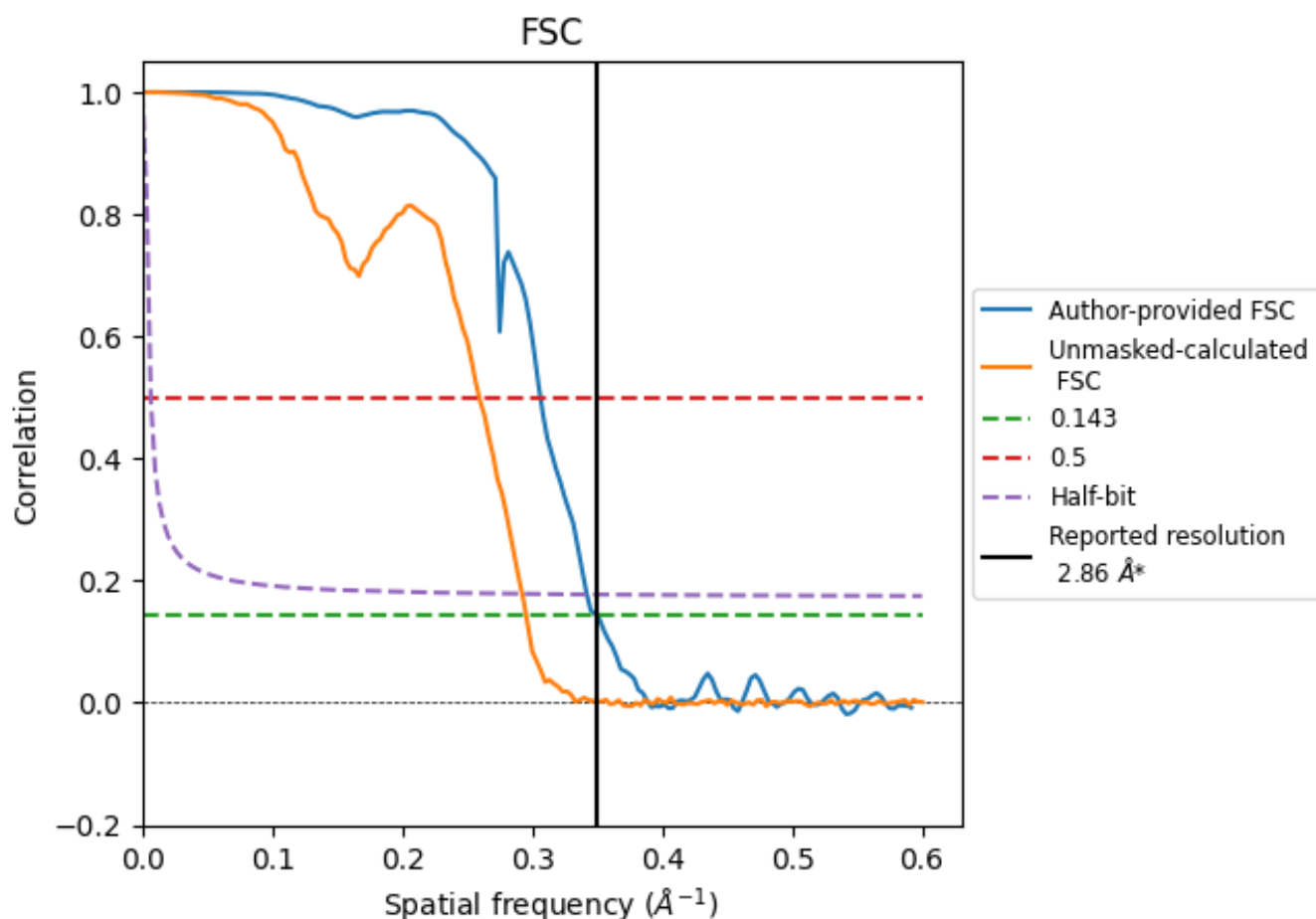


*Reported resolution corresponds to spatial frequency of 0.350 \AA^{-1}

8 Fourier-Shell correlation [i](#)

Fourier-Shell Correlation (FSC) is the most commonly used method to estimate the resolution of single-particle and subtomogram-averaged maps. The shape of the curve depends on the imposed symmetry, mask and whether or not the two 3D reconstructions used were processed from a common reference. The reported resolution is shown as a black line. A curve is displayed for the half-bit criterion in addition to lines showing the 0.143 gold standard cut-off and 0.5 cut-off.

8.1 FSC [i](#)



*Reported resolution corresponds to spatial frequency of 0.350 \AA^{-1}

8.2 Resolution estimates [i](#)

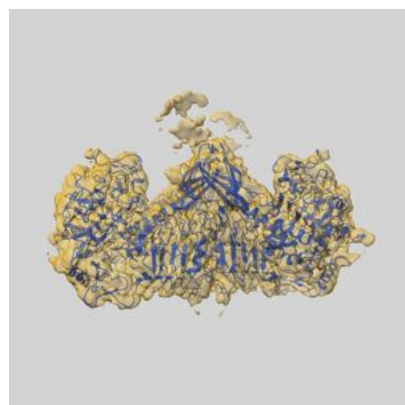
Resolution estimate (Å)	Estimation criterion (FSC cut-off)		
	0.143	0.5	Half-bit
Reported by author	2.86	-	-
Author-provided FSC curve	2.86	3.26	2.92
Unmasked-calculated*	3.39	3.86	3.42

*Resolution estimate based on FSC curve calculated by comparison of deposited half-maps. The value from deposited half-maps intersecting FSC 0.143 CUT-OFF 3.39 differs from the reported value 2.86 by more than 10 %

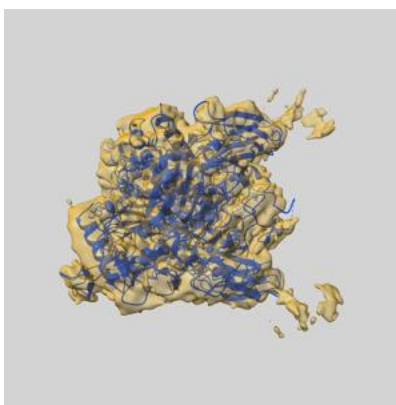
9 Map-model fit [i](#)

This section contains information regarding the fit between EMDB map EMD-49260 and PDB model 9NCN. Per-residue inclusion information can be found in section [3](#) on page [9](#).

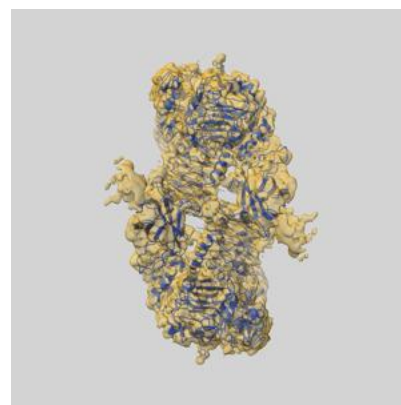
9.1 Map-model overlay [i](#)



X



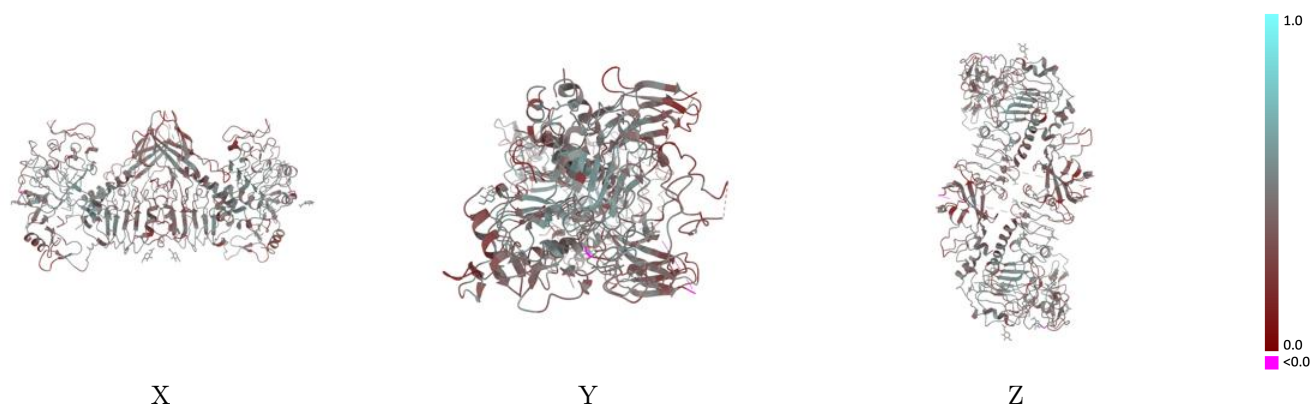
Y



Z

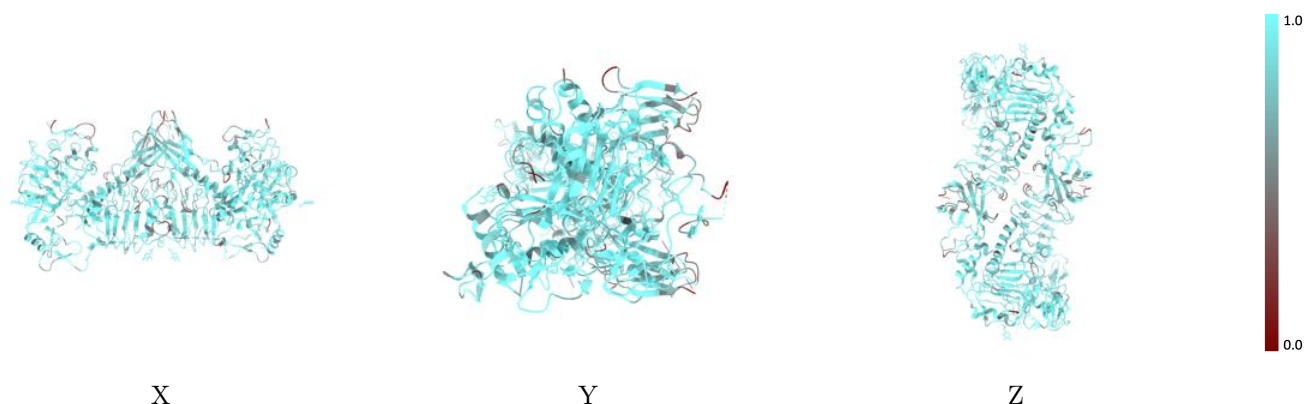
The images above show the 3D surface view of the map at the recommended contour level 0.02 at 50% transparency in yellow overlaid with a ribbon representation of the model coloured in blue. These images allow for the visual assessment of the quality of fit between the atomic model and the map.

9.2 Q-score mapped to coordinate model [i](#)



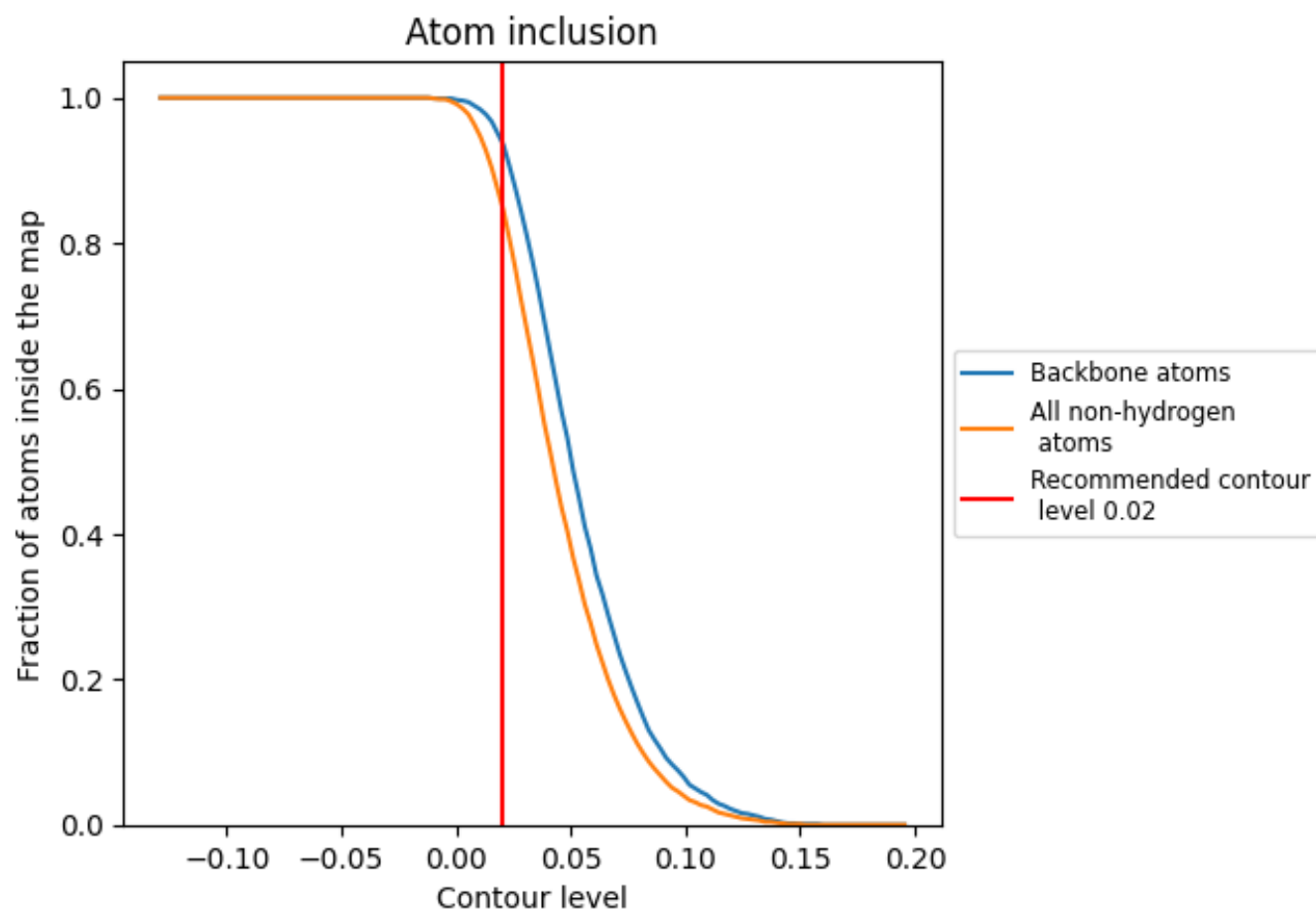
The images above show the model with each residue coloured according its Q-score. This shows their resolvability in the map with higher Q-score values reflecting better resolvability. Please note: Q-score is calculating the resolvability of atoms, and thus high values are only expected at resolutions at which atoms can be resolved. Low Q-score values may therefore be expected for many entries.

9.3 Atom inclusion mapped to coordinate model [i](#)



The images above show the model with each residue coloured according to its atom inclusion. This shows to what extent they are inside the map at the recommended contour level (0.02).

9.4 Atom inclusion [i](#)



At the recommended contour level, 94% of all backbone atoms, 85% of all non-hydrogen atoms, are inside the map.

9.5 Map-model fit summary ⓘ

The table lists the average atom inclusion at the recommended contour level (0.02) and Q-score for the entire model and for each chain.

Chain	Atom inclusion	Q-score
All	<div><div></div></div> 0.8530	<div><div></div></div> 0.4170
A	<div><div></div></div> 0.9640	<div><div></div></div> 0.5090
B	<div><div></div></div> 0.8210	<div><div></div></div> 0.4650
C	<div><div></div></div> 0.8600	<div><div></div></div> 0.4380
D	<div><div></div></div> 0.8080	<div><div></div></div> 0.4120
E	<div><div></div></div> 0.8510	<div><div></div></div> 0.4170
F	<div><div></div></div> 0.8560	<div><div></div></div> 0.4170
G	<div><div></div></div> 0.8820	<div><div></div></div> 0.3910
H	<div><div></div></div> 0.8630	<div><div></div></div> 0.3910

1.0

0.0

<0.0