



## Full wwPDB EM Validation Report ⓘ

Apr 15, 2026 – 02:07 AM UTC

PDB ID : 9MB7 / pdb\_00009mb7  
EMDB ID : EMD-63768  
Title : Cryo-EM structure of eSaCas9-NNG-guide RNA-mismatched target DNA complex  
Authors : Omura, S.N.; Nakagawa, R.; Yamashita, K.; Nishimasu, H.; Nureki, O.  
Deposited on : 2025-03-15  
Resolution : 2.88 Å(reported)

This is a Full wwPDB EM Validation Report for a publicly released PDB entry.

We welcome your comments at [validation@mail.wwpdb.org](mailto:validation@mail.wwpdb.org)

A user guide is available at

<https://www.wwpdb.org/validation/2017/EMValidationReportHelp>  
with specific help available everywhere you see the ⓘ symbol.

The types of validation reports are described at

<http://www.wwpdb.org/validation/2017/FAQs#types>.

---

The following versions of software and data (see [references ⓘ](#)) were used in the production of this report:

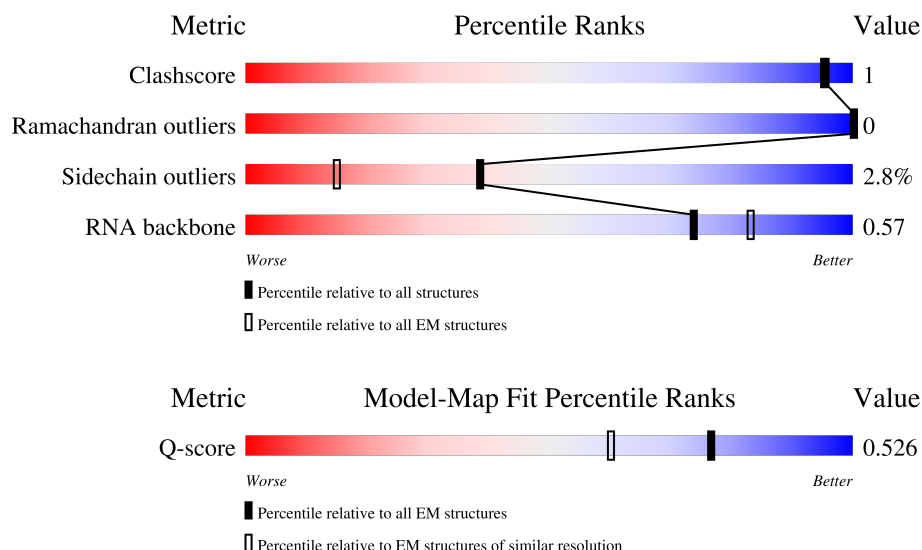
EMDB validation analysis : 0.0.1.dev132  
Mogul : 2022.3.0, CSD as543be (2022)  
MolProbity : 4-5-2 with Phenix2.0  
Percentile statistics : 20250101.v01 (using entries in the PDB archive January 1st 2025)  
EM percentile statistics : 202505.v01 (Using data in the EMDB archive up until May 2025)  
MapQ : 1.9.13  
Ideal geometry (proteins) : Engh & Huber (2001)  
Ideal geometry (DNA, RNA) : Parkinson et al. (1996)  
Validation Pipeline (wwPDB-VP) : 2.49

# 1 Overall quality at a glance

The following experimental techniques were used to determine the structure:  
*ELECTRON MICROSCOPY*

The reported resolution of this entry is 2.88 Å.

Percentile scores (ranging between 0-100) for global validation metrics of the entry are shown in the following graphic. The table shows the number of entries on which the scores are based.



Metric	Whole archive (#Entries)	EM structures (#Entries)	Similar EM resolution (#Entries, resolution range(Å))
Clashscore	229148	23984	-
Ramachandran outliers	224038	23583	-
Sidechain outliers	223484	23102	-
RNA backbone	8273	3508	-
Q-score	-	25397	12111 ( 2.38 - 3.38 )

The table below summarises the geometric issues observed across the polymeric chains and their fit to the map. The red, orange, yellow and green segments of the bar indicate the fraction of residues that contain outliers for  $\geq 3$ , 2, 1 and 0 types of geometric quality criteria respectively. A grey segment represents the fraction of residues that are not modelled. The numeric value for each fraction is indicated below the corresponding segment, with a dot representing fractions  $\leq 5\%$ . The upper red bar (where present) indicates the fraction of residues that have poor fit to the EM map (all-atom inclusion  $< 40\%$ ). The numeric value is given above the bar.

Mol	Chain	Length	Quality of chain
1	C	43	
2	D	43	
3	A	1170	

Continued on next page...

Continued from previous page...

Mol	Chain	Length	Quality of chain
4	B	99	<div><div></div><div>86%</div><div>12% ..</div></div>

## 2 Entry composition i

There are 5 unique types of molecules in this entry. The entry contains 11622 atoms, of which 0 are hydrogens and 0 are deuteriums.

In the tables below, the AltConf column contains the number of residues with at least one atom in alternate conformation and the Trace column contains the number of residues modelled with at most 2 atoms.

- Molecule 1 is a DNA chain called target DNA strand.

Mol	Chain	Residues	Atoms						AltConf	Trace
1	C	39	Total	C	N	O	P	S	0	0
			796	381	147	223	38	7		

- Molecule 2 is a DNA chain called non-target DNA strand.

Mol	Chain	Residues	Atoms						AltConf	Trace
2	D	26	Total	C	N	O	P	S	0	0
			535	255	99	153	26	2		

- Molecule 3 is a protein called Ubiquitin-like protein SMT3,CRISPR-associated endonuclease Cas9.

Mol	Chain	Residues	Atoms						AltConf	Trace
3	A	986	Total	C	N	O	S		1	0
			8198	5213	1438	1533	14			

There are 34 discrepancies between the modelled and reference sequences:

Chain	Residue	Modelled	Actual	Comment	Reference
A	-116	MET	-	initiating methionine	UNP Q12306
A	-115	GLY	-	expression tag	UNP Q12306
A	-114	HIS	-	expression tag	UNP Q12306
A	-113	HIS	-	expression tag	UNP Q12306
A	-112	HIS	-	expression tag	UNP Q12306
A	-111	HIS	-	expression tag	UNP Q12306
A	-110	HIS	-	expression tag	UNP Q12306
A	-109	HIS	-	expression tag	UNP Q12306
A	-108	GLY	-	expression tag	UNP Q12306
A	-107	SER	-	expression tag	UNP Q12306
A	-106	LEU	-	expression tag	UNP Q12306
A	-105	GLN	-	expression tag	UNP Q12306
A	-30	ALA	THR	conflict	UNP Q12306
A	-8	GLU	-	linker	UNP Q12306

*Continued on next page...*

*Continued from previous page...*

Chain	Residue	Modelled	Actual	Comment	Reference
A	-7	ASN	-	linker	UNP Q12306
A	-6	LEU	-	linker	UNP Q12306
A	-5	TYR	-	linker	UNP Q12306
A	-4	PHE	-	linker	UNP Q12306
A	-3	GLN	-	linker	UNP Q12306
A	-2	GLY	-	linker	UNP Q12306
A	-1	SER	-	linker	UNP Q12306
A	0	HIS	-	linker	UNP Q12306
A	413	ALA	ASN	conflict	UNP J7RUA5
A	420	ALA	ARG	conflict	UNP J7RUA5
A	782	LYS	GLU	conflict	UNP J7RUA5
A	800	ARG	LEU	conflict	UNP J7RUA5
A	927	LYS	THR	conflict	UNP J7RUA5
A	929	ASN	LYS	conflict	UNP J7RUA5
A	968	ARG	ASN	conflict	UNP J7RUA5
A	985	ALA	ASN	conflict	UNP J7RUA5
A	986	SER	ASN	conflict	UNP J7RUA5
A	991	ALA	ARG	conflict	UNP J7RUA5
A	1017	PHE	ILE	conflict	UNP J7RUA5
A	1021	SER	ALA	conflict	UNP J7RUA5

- Molecule 4 is a RNA chain called sgRNA.

Mol	Chain	Residues	Atoms					AltConf	Trace
4	B	98	Total	C	N	O	P	0	0
			2092	935	372	687	98		

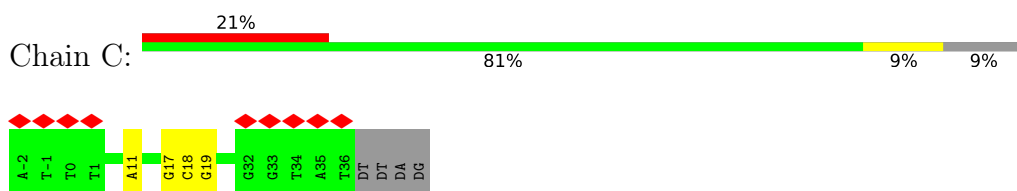
- Molecule 5 is MAGNESIUM ION (CCD ID: MG) (formula: Mg).

Mol	Chain	Residues	Atoms		AltConf
5	A	1	Total	Mg	0
			1	1	

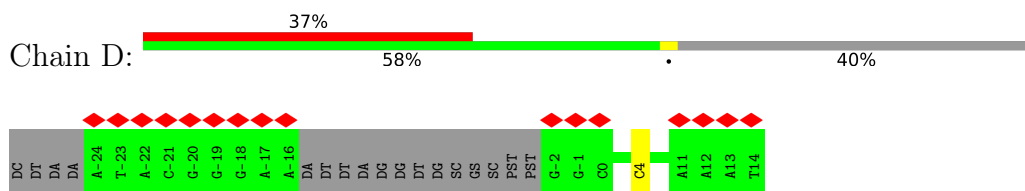
### 3 Residue-property plots [i](#)

These plots are drawn for all protein, RNA, DNA and oligosaccharide chains in the entry. The first graphic for a chain summarises the proportions of the various outlier classes displayed in the second graphic. The second graphic shows the sequence view annotated by issues in geometry and atom inclusion in map density. Residues are color-coded according to the number of geometric quality criteria for which they contain at least one outlier: green = 0, yellow = 1, orange = 2 and red = 3 or more. A red diamond above a residue indicates a poor fit to the EM map for this residue (all-atom inclusion < 40%). Stretches of 2 or more consecutive residues without any outlier are shown as a green connector. Residues present in the sample, but not in the model, are shown in grey.

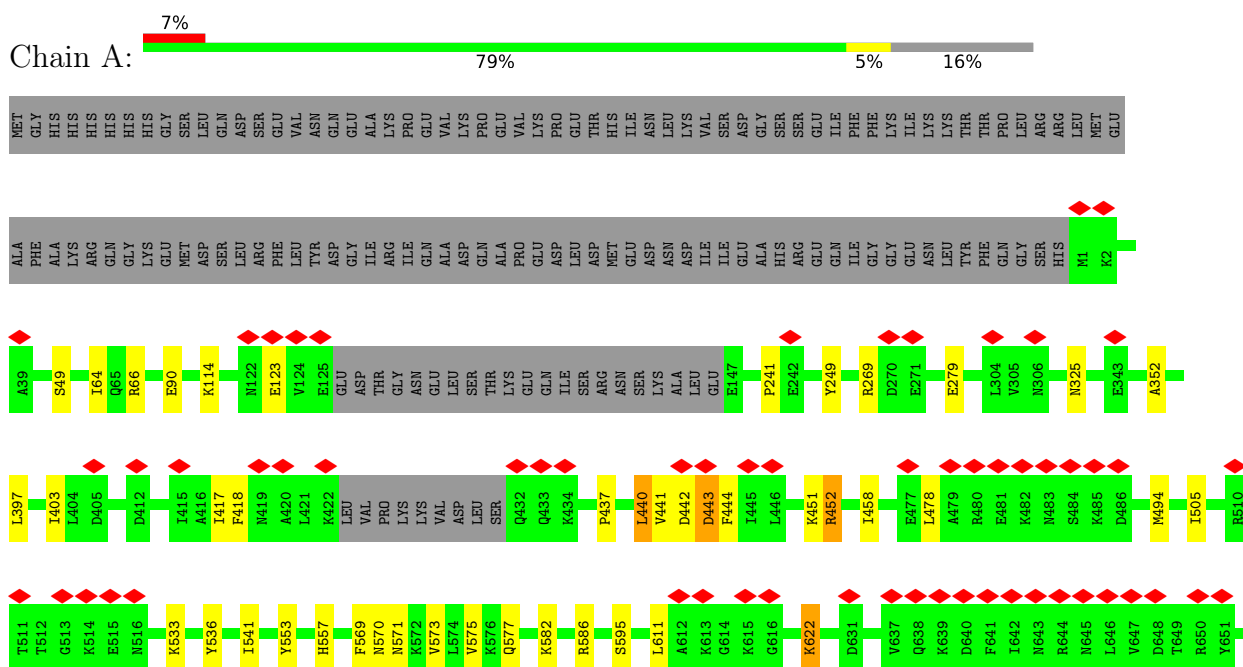
- Molecule 1: target DNA strand

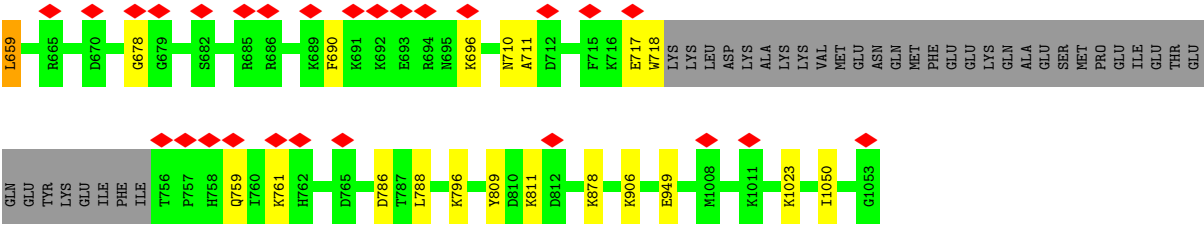


- Molecule 2: non-target DNA strand

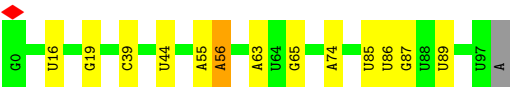
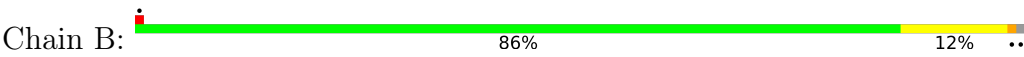


- Molecule 3: Ubiquitin-like protein SMT3,CRISPR-associated endonuclease Cas9





● Molecule 4: sgRNA



## 4 Experimental information

Property	Value	Source
EM reconstruction method	SINGLE PARTICLE	Depositor
Imposed symmetry	POINT, Not provided	
Number of particles used	123595	Depositor
Resolution determination method	FSC 0.143 CUT-OFF	Depositor
CTF correction method	PHASE FLIPPING AND AMPLITUDE CORRECTION	Depositor
Microscope	TFS KRIOS	Depositor
Voltage (kV)	300	Depositor
Electron dose ( $e^-/\text{\AA}^2$ )	50.0	Depositor
Minimum defocus (nm)	800	Depositor
Maximum defocus (nm)	1600	Depositor
Magnification	Not provided	
Image detector	GATAN K3 (6k x 4k)	Depositor
Maximum map value	0.909	Depositor
Minimum map value	-0.461	Depositor
Average map value	0.002	Depositor
Map value standard deviation	0.027	Depositor
Recommended contour level	0.07	Depositor
Map size (Å)	166.4676, 166.4676, 166.4676	wwPDB
Map dimensions	156, 156, 156	wwPDB
Map angles (°)	90.0, 90.0, 90.0	wwPDB
Pixel spacing (Å)	1.0671, 1.0671, 1.0671	Depositor



## 5 Model quality i

### 5.1 Standard geometry i

Bond lengths and bond angles in the following residue types are not validated in this section: GS, MG, AS, SC

The Z score for a bond length (or angle) is the number of standard deviations the observed value is removed from the expected value. A bond length (or angle) with  $|Z| > 5$  is considered an outlier worth inspection. RMSZ is the root-mean-square of all Z scores of the bond lengths (or angles).

Mol	Chain	Bond lengths		Bond angles	
		RMSZ	$\# Z  > 5$	RMSZ	$\# Z  > 5$
1	C	0.35	0/731	0.96	1/1124 (0.1%)
2	D	0.38	0/549	1.00	1/842 (0.1%)
3	A	0.52	0/8343	1.13	9/11200 (0.1%)
4	B	0.54	0/2340	0.90	3/3643 (0.1%)
All	All	0.51	0/11963	1.06	14/16809 (0.1%)

Chiral center outliers are detected by calculating the chiral volume of a chiral center and verifying if the center is modelled as a planar moiety or with the opposite hand. A planarity outlier is detected by checking planarity of atoms in a peptide group, atoms in a mainchain group or atoms of a sidechain that are expected to be planar.

Mol	Chain	#Chirality outliers	#Planarity outliers
3	A	0	2

There are no bond length outliers.

All (14) bond angle outliers are listed below:

Mol	Chain	Res	Type	Atoms	Z	Observed(°)	Ideal(°)
3	A	444	PHE	CA-CB-CG	8.23	122.03	113.80
3	A	443	ASP	CA-CB-CG	7.87	120.47	112.60
4	B	19	G	O3'-P-O5'	-7.51	92.73	104.00
3	A	444	PHE	N-CA-CB	7.39	121.64	110.19
3	A	444	PHE	CB-CA-C	-7.38	97.05	110.56
3	A	690	PHE	CA-CB-CG	5.91	119.71	113.80
4	B	56	A	O3'-P-O5'	-5.90	95.15	104.00
1	C	11	DA	O3'-P-O5'	-5.82	95.26	104.00
3	A	442	ASP	CA-CB-CG	5.43	118.03	112.60
3	A	622	LYS	CB-CA-C	-5.40	102.40	110.88
3	A	786	ASP	CA-CB-CG	5.19	117.79	112.60
3	A	452	ARG	CG-CD-NE	5.17	123.37	112.00

*Continued on next page...*

*Continued from previous page...*

Mol	Chain	Res	Type	Atoms	Z	Observed(°)	Ideal(°)
2	D	4	DC	O3'-P-O5'	-5.16	96.26	104.00
4	B	16	U	O3'-P-O5'	-5.07	96.40	104.00

There are no chirality outliers.

All (2) planarity outliers are listed below:

Mol	Chain	Res	Type	Group
3	A	66[A]	ARG	Sidechain
3	A	66[B]	ARG	Sidechain

## 5.2 Too-close contacts ⓘ

In the following table, the Non-H and H(model) columns list the number of non-hydrogen atoms and hydrogen atoms in the chain respectively. The H(added) column lists the number of hydrogen atoms added and optimized by MolProbity. The Clashes column lists the number of clashes within the asymmetric unit, whereas Symm-Clashes lists symmetry-related clashes.

Mol	Chain	Non-H	H(model)	H(added)	Clashes	Symm-Clashes
1	C	796	0	443	1	0
2	D	535	0	297	0	0
3	A	8198	0	8351	21	0
4	B	2092	0	1051	1	0
5	A	1	0	0	0	0
All	All	11622	0	10142	22	0

The all-atom clashscore is defined as the number of clashes found per 1000 atoms (including hydrogen atoms). The all-atom clashscore for this structure is 1.

All (22) close contacts within the same asymmetric unit are listed below, sorted by their clash magnitude.

Atom-1	Atom-2	Interatomic distance (Å)	Clash overlap (Å)
3:A:440:LEU:HD11	3:A:659:LEU:HD13	1.78	0.64
3:A:582:LYS:O	3:A:586:ARG:NH1	2.33	0.62
3:A:595:SER:HB3	3:A:809:TYR:O	2.04	0.57
3:A:403:ILE:HG13	3:A:418:PHE:CZ	2.41	0.55
3:A:573:VAL:HG12	3:A:575:VAL:HG13	1.89	0.54
3:A:269:ARG:NH2	3:A:279:GLU:OE2	2.41	0.54
3:A:570:ASN:O	3:A:622:LYS:HG2	2.09	0.53
3:A:440:LEU:HD13	3:A:441:VAL:N	2.24	0.53

*Continued on next page...*

Continued from previous page...

Atom-1	Atom-2	Interatomic distance (Å)	Clash overlap (Å)
3:A:437:PRO:O	3:A:440:LEU:HD12	2.13	0.48
3:A:536:TYR:CE2	3:A:575:VAL:HG11	2.48	0.48
3:A:458:ILE:HD11	3:A:659:LEU:HD21	1.96	0.47
3:A:478:LEU:O	3:A:678:GLY:N	2.47	0.47
1:C:18:SC:H2'	1:C:19:GS:H8	1.97	0.46
3:A:788:LEU:CD2	3:A:906:LYS:HE2	2.46	0.45
3:A:403:ILE:HD12	3:A:417:ILE:HG22	1.98	0.45
3:A:717:GLU:O	3:A:718:TRP:C	2.59	0.45
3:A:557:HIS:HA	3:A:571:ASN:O	2.20	0.42
3:A:541:ILE:HG23	3:A:553:TYR:CE1	2.55	0.42
3:A:1050:ILE:CD1	4:B:85:U:C2	3.04	0.41
3:A:64:ILE:HD11	3:A:114:LYS:HG3	2.02	0.41
3:A:249:TYR:O	3:A:352:ALA:HB1	2.21	0.41
3:A:710:ASN:O	3:A:711:ALA:C	2.64	0.40

There are no symmetry-related clashes.

## 5.3 Torsion angles [i](#)

### 5.3.1 Protein backbone [i](#)

In the following table, the Percentiles column shows the percent Ramachandran outliers of the chain as a percentile score with respect to all PDB entries followed by that with respect to all EM entries.

The Analysed column shows the number of residues for which the backbone conformation was analysed, and the total number of residues.

Mol	Chain	Analysed	Favoured	Allowed	Outliers	Percentiles	
3	A	979/1170 (84%)	930 (95%)	49 (5%)	0	100	100

There are no Ramachandran outliers to report.

### 5.3.2 Protein sidechains [i](#)

In the following table, the Percentiles column shows the percent sidechain outliers of the chain as a percentile score with respect to all PDB entries followed by that with respect to all EM entries.

The Analysed column shows the number of residues for which the sidechain conformation was analysed, and the total number of residues.

Mol	Chain	Analysed	Rotameric	Outliers	Percentiles	
3	A	907/1072 (85%)	882 (97%)	25 (3%)	38	70

All (25) residues with a non-rotameric sidechain are listed below:

Mol	Chain	Res	Type
3	A	49	SER
3	A	90	GLU
3	A	123	GLU
3	A	241	PRO
3	A	325	ASN
3	A	397	LEU
3	A	440	LEU
3	A	443	ASP
3	A	451	LYS
3	A	452	ARG
3	A	494	MET
3	A	505	ILE
3	A	533	LYS
3	A	569	PHE
3	A	577	GLN
3	A	611	LEU
3	A	659	LEU
3	A	696	LYS
3	A	759	GLN
3	A	761	LYS
3	A	796	LYS
3	A	811	LYS
3	A	878	LYS
3	A	949	GLU
3	A	1023	LYS

Sometimes sidechains can be flipped to improve hydrogen bonding and reduce clashes. All (10) such sidechains are listed below:

Mol	Chain	Res	Type
3	A	236	HIS
3	A	290	GLN
3	A	350	GLN
3	A	411	ASN
3	A	433	GLN
3	A	577	GLN
3	A	667	ASN
3	A	701	HIS

*Continued on next page...*

*Continued from previous page...*

Mol	Chain	Res	Type
3	A	806	ASN
3	A	831	HIS

### 5.3.3 RNA ⓘ

Mol	Chain	Analysed	Backbone Outliers	Pucker Outliers
4	B	97/99 (97%)	9 (9%)	2 (2%)

All (9) RNA backbone outliers are listed below:

Mol	Chain	Res	Type
4	B	39	C
4	B	55	A
4	B	56	A
4	B	63	A
4	B	65	G
4	B	74	A
4	B	86	U
4	B	87	G
4	B	89	U

All (2) RNA pucker outliers are listed below:

Mol	Chain	Res	Type
4	B	44	U
4	B	86	U

## 5.4 Non-standard residues in protein, DNA, RNA chains ⓘ

9 non-standard protein/DNA/RNA residues are modelled in this entry.

In the following table, the Counts columns list the number of bonds (or angles) for which Mogul statistics could be retrieved, the number of bonds (or angles) that are observed in the model and the number of bonds (or angles) that are defined in the Chemical Component Dictionary. The Link column lists molecule types, if any, to which the group is linked. The Z score for a bond length (or angle) is the number of standard deviations the observed value is removed from the expected value. A bond length (or angle) with  $|Z| > 2$  is considered an outlier worth inspection. RMSZ is the root-mean-square of all Z scores of the bond lengths (or angles).

Mol	Type	Chain	Res	Link	Bond lengths			Bond angles		
					Counts	RMSZ	# Z  > 2	Counts	RMSZ	# Z  > 2
1	SC	C	18	4,1	17,20,21	0.35	0	23,28,31	0.65	0
2	GS	D	-2	2	21,24,25	0.36	0	30,35,38	0.50	0
1	SC	C	13	4,1	17,20,21	0.41	0	23,28,31	0.43	0
1	GS	C	17	4,1	21,24,25	0.34	0	30,35,38	0.96	3 (10%)
1	AS	C	16	4,1	20,23,24	0.38	0	28,33,36	0.56	0
1	AS	C	15	4,1	20,23,24	0.19	0	28,33,36	0.51	0
2	GS	D	-1	2	21,24,25	0.37	0	30,35,38	0.39	0
1	GS	C	19	4,1	21,24,25	0.34	0	30,35,38	0.42	0
1	SC	C	14	4,1,5	17,20,21	0.36	0	23,28,31	0.42	0

In the following table, the Chirals column lists the number of chiral outliers, the number of chiral centers analysed, the number of these observed in the model and the number defined in the Chemical Component Dictionary. Similar counts are reported in the Torsion and Rings columns. '-' means no outliers of that kind were identified.

Mol	Type	Chain	Res	Link	Chirals	Torsions	Rings
1	SC	C	18	4,1	-	0/7/21/22	0/2/2/2
2	GS	D	-2	2	-	0/7/21/22	0/3/3/3
1	SC	C	13	4,1	-	1/7/21/22	0/2/2/2
1	GS	C	17	4,1	-	0/7/21/22	0/3/3/3
1	AS	C	16	4,1	-	1/7/21/22	0/3/3/3
1	AS	C	15	4,1	-	3/7/21/22	0/3/3/3
2	GS	D	-1	2	-	2/7/21/22	0/3/3/3
1	GS	C	19	4,1	-	0/7/21/22	0/3/3/3
1	SC	C	14	4,1,5	-	0/7/21/22	0/2/2/2

There are no bond length outliers.

All (3) bond angle outliers are listed below:

Mol	Chain	Res	Type	Atoms	Z	Observed(°)	Ideal(°)
1	C	17	GS	C4'-O4'-C1'	-2.76	102.94	109.51
1	C	17	GS	O4'-C1'-N9	2.31	111.95	107.86
1	C	17	GS	C2'-C3'-C4'	-2.23	98.28	102.80

There are no chirality outliers.

All (7) torsion outliers are listed below:

Mol	Chain	Res	Type	Atoms
2	D	-1	GS	O4'-C4'-C5'-O5'
2	D	-1	GS	C3'-C4'-C5'-O5'

*Continued on next page...*

*Continued from previous page...*

Mol	Chain	Res	Type	Atoms
1	C	15	AS	C3'-C4'-C5'-O5'
1	C	15	AS	O4'-C1'-N9-C8
1	C	13	SC	C3'-C4'-C5'-O5'
1	C	15	AS	O4'-C1'-N9-C4
1	C	16	AS	O4'-C1'-N9-C8

There are no ring outliers.

2 monomers are involved in 1 short contact:

Mol	Chain	Res	Type	Clashes	Symm-Clashes
1	C	18	SC	1	0
1	C	19	GS	1	0

## 5.5 Carbohydrates [i](#)

There are no oligosaccharides in this entry.

## 5.6 Ligand geometry [i](#)

Of 1 ligands modelled in this entry, 1 is monoatomic - leaving 0 for Mogul analysis.

There are no bond length outliers.

There are no bond angle outliers.

There are no chirality outliers.

There are no torsion outliers.

There are no ring outliers.

No monomer is involved in short contacts.

## 5.7 Other polymers [i](#)

There are no such residues in this entry.

## 5.8 Polymer linkage issues [i](#)

There are no chain breaks in this entry.

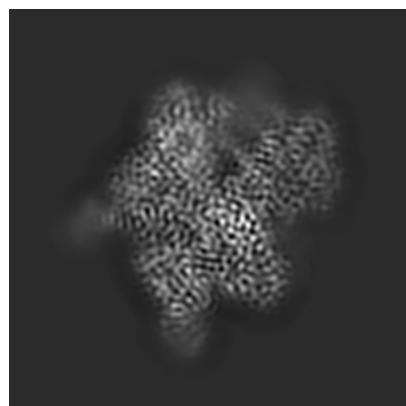
## 6 Map visualisation [i](#)

This section contains visualisations of the EMDB entry EMD-63768. These allow visual inspection of the internal detail of the map and identification of artifacts.

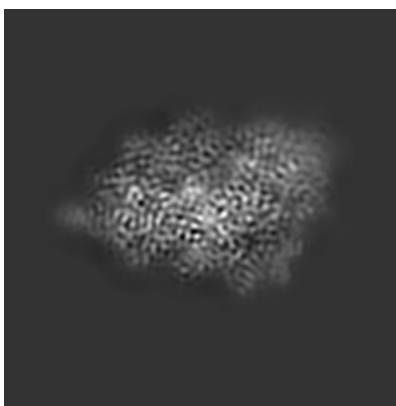
Images derived from a raw map, generated by summing the deposited half-maps, are presented below the corresponding image components of the primary map to allow further visual inspection and comparison with those of the primary map.

### 6.1 Orthogonal projections [i](#)

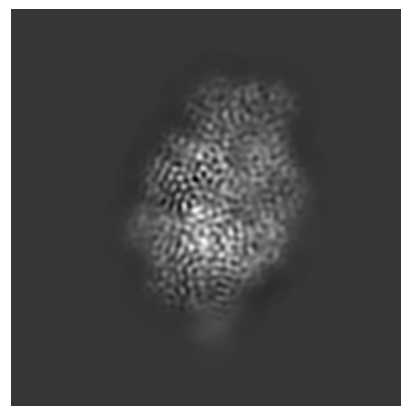
#### 6.1.1 Primary map



X

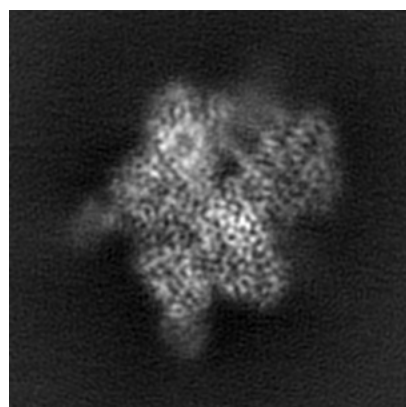


Y

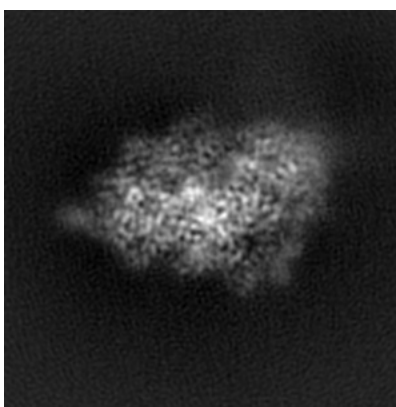


Z

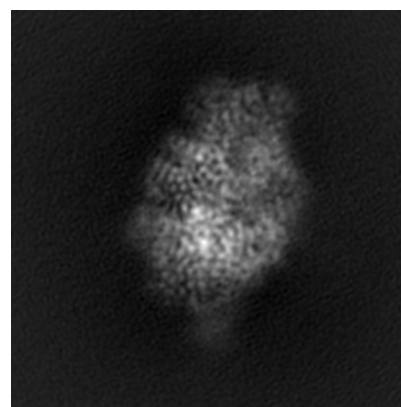
#### 6.1.2 Raw map



X



Y



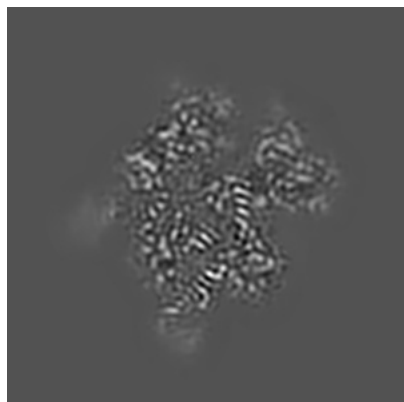
Z

The images above show the map projected in three orthogonal directions.

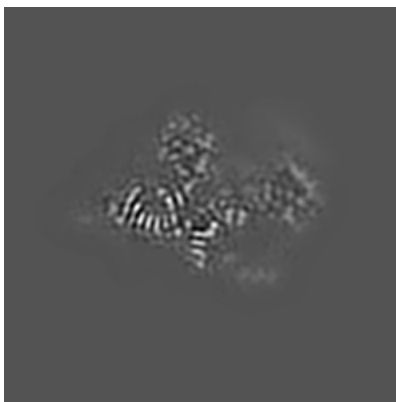


## 6.2 Central slices [i](#)

### 6.2.1 Primary map



X Index: 78

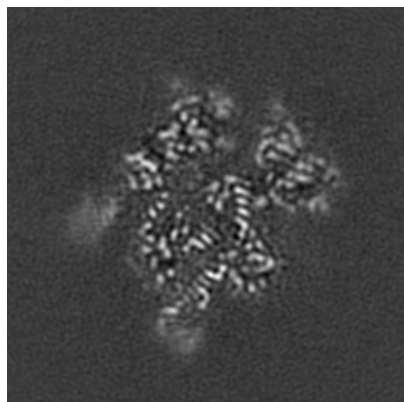


Y Index: 78

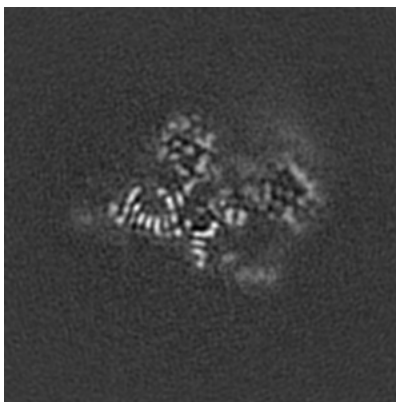


Z Index: 78

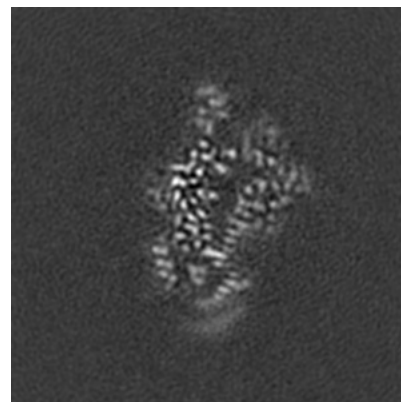
### 6.2.2 Raw map



X Index: 78



Y Index: 78

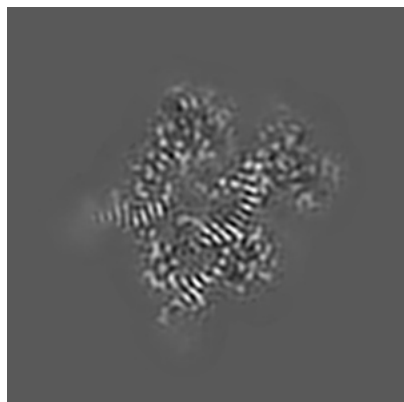


Z Index: 78

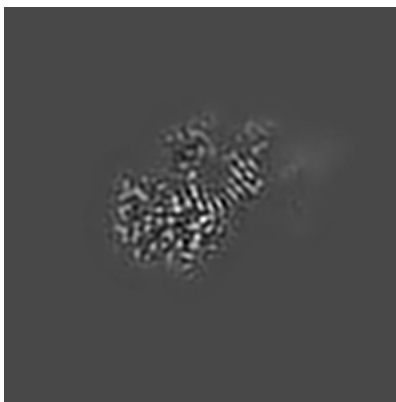
The images above show central slices of the map in three orthogonal directions.

## 6.3 Largest variance slices [i](#)

### 6.3.1 Primary map



X Index: 81

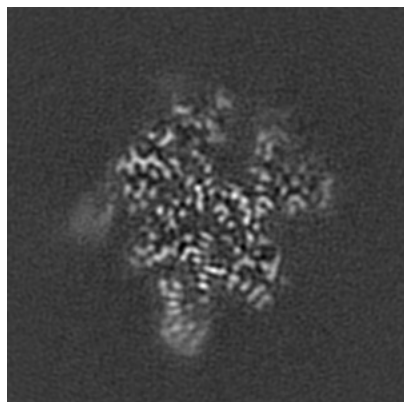


Y Index: 91

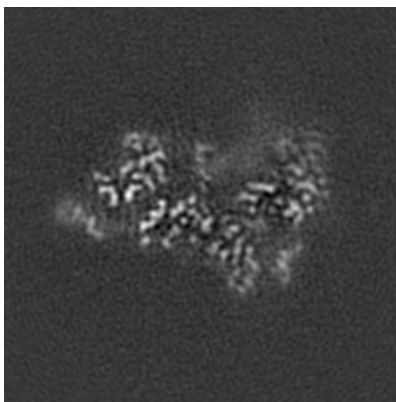


Z Index: 75

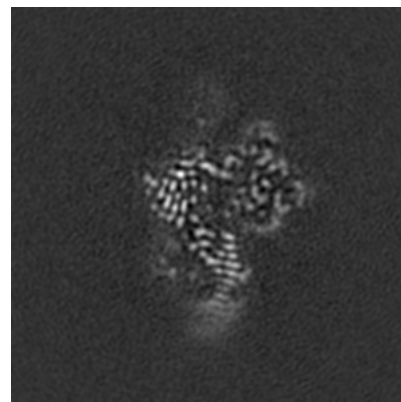
### 6.3.2 Raw map



X Index: 74



Y Index: 69

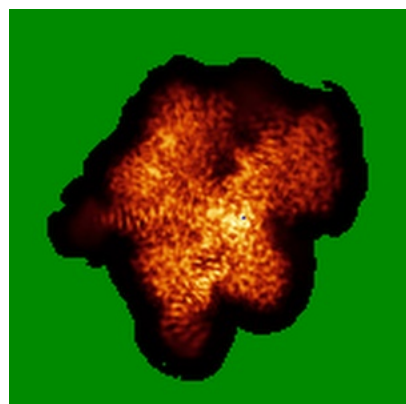


Z Index: 75

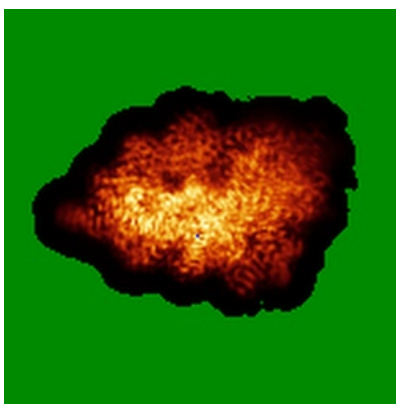
The images above show the largest variance slices of the map in three orthogonal directions.

## 6.4 Orthogonal standard-deviation projections (False-color) [i](#)

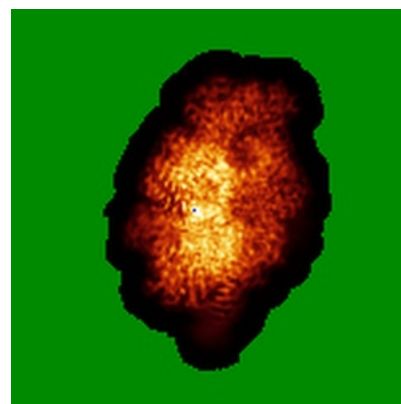
### 6.4.1 Primary map



X

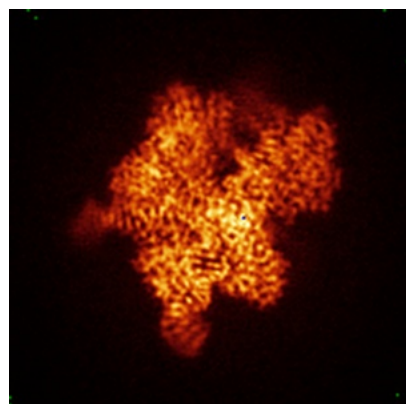


Y

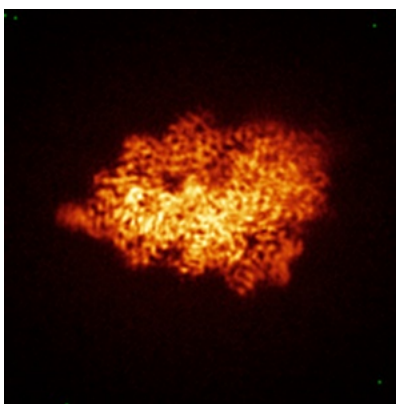


Z

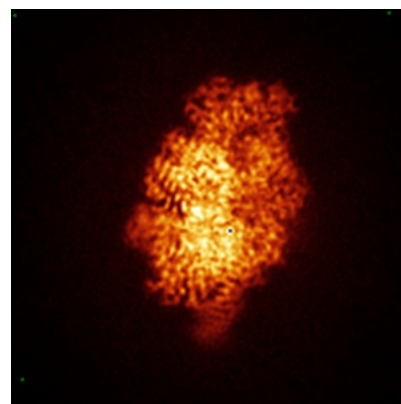
### 6.4.2 Raw map



X



Y



Z

The images above show the map standard deviation projections with false color in three orthogonal directions. Minimum values are shown in green, max in blue, and dark to light orange shades represent small to large values respectively.

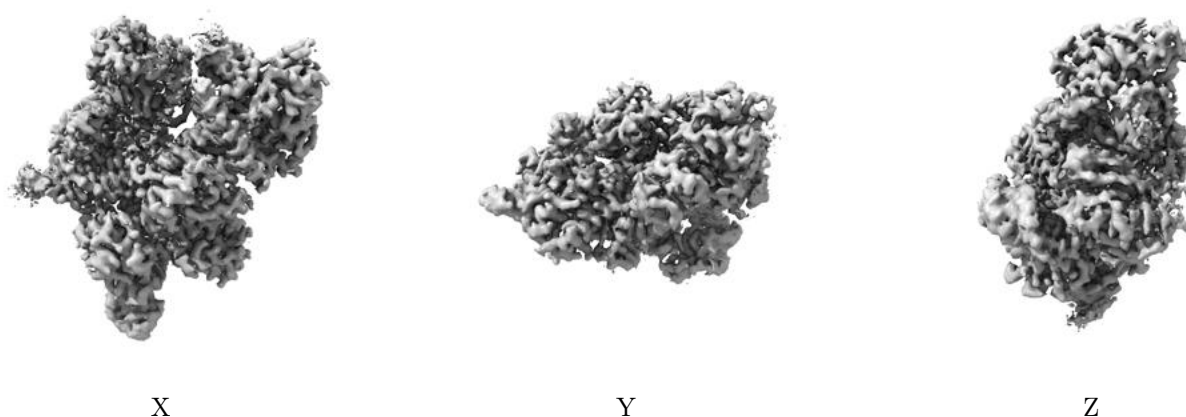
## 6.5 Orthogonal surface views [i](#)

### 6.5.1 Primary map



The images above show the 3D surface view of the map at the recommended contour level 0.07. These images, in conjunction with the slice images, may facilitate assessment of whether an appropriate contour level has been provided.

### 6.5.2 Raw map



These images show the 3D surface of the raw map. The raw map's contour level was selected so that its surface encloses the same volume as the primary map does at its recommended contour level.

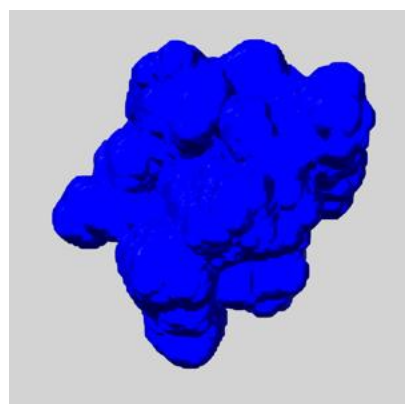
## 6.6 Mask visualisation [i](#)

This section shows the 3D surface view of the primary map at 50% transparency overlaid with the specified mask at 0% transparency

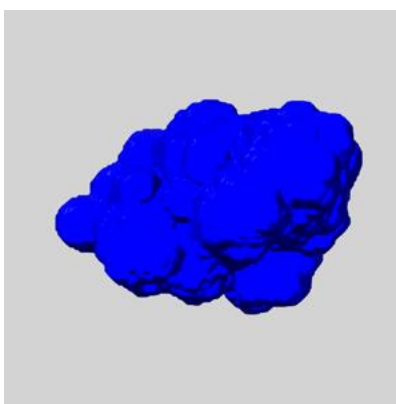
A mask typically either:

- Encompasses the whole structure
- Separates out a domain, a functional unit, a monomer or an area of interest from a larger structure

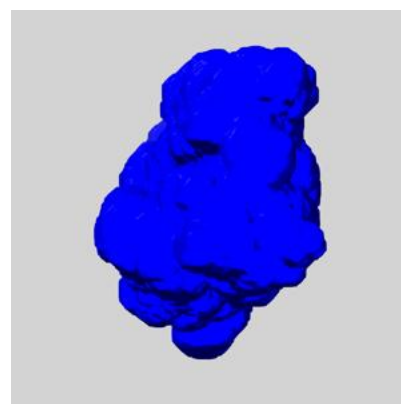
### 6.6.1 emd\_63768\_msk\_1.map [i](#)



X



Y

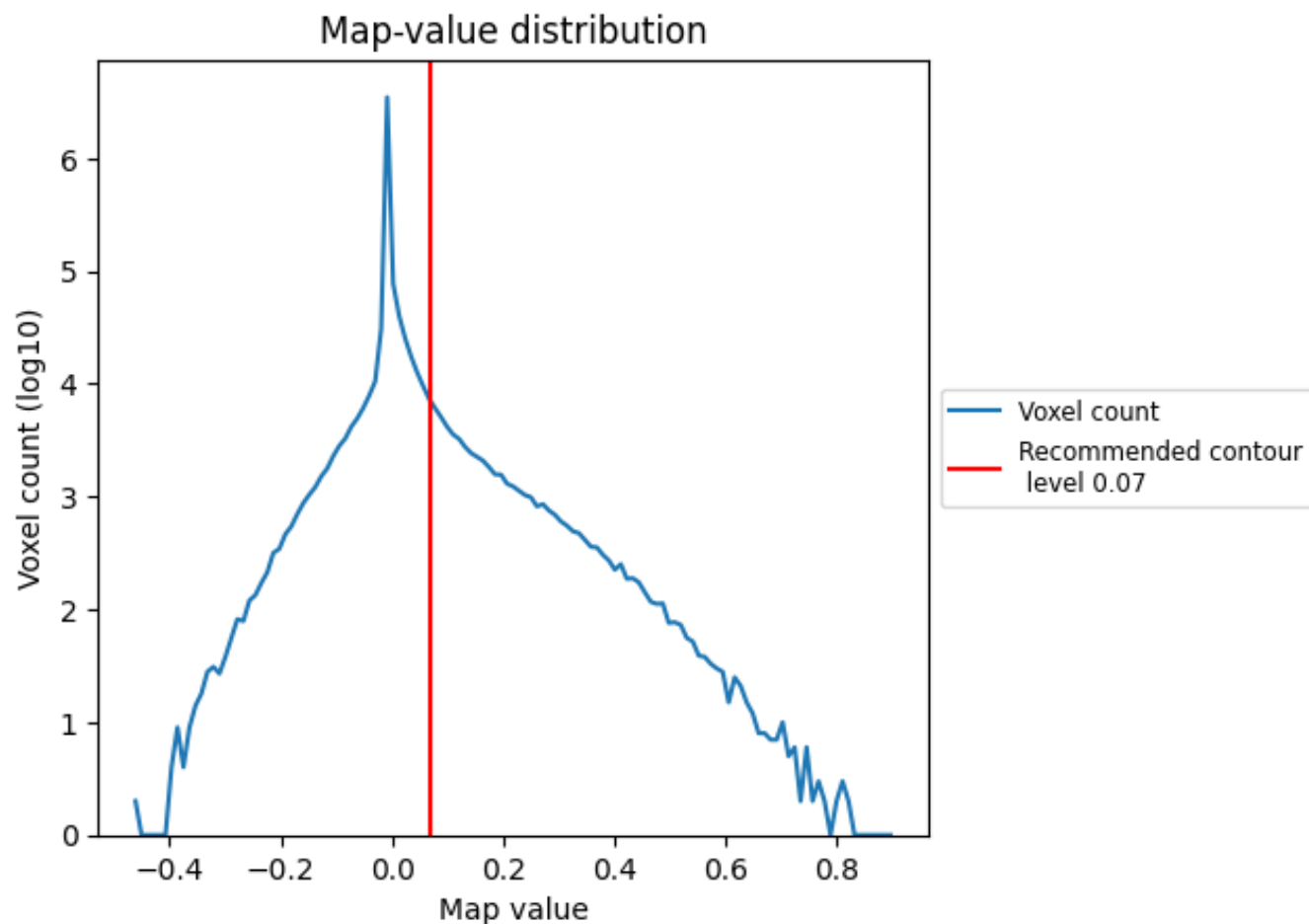


Z

## 7 Map analysis [i](#)

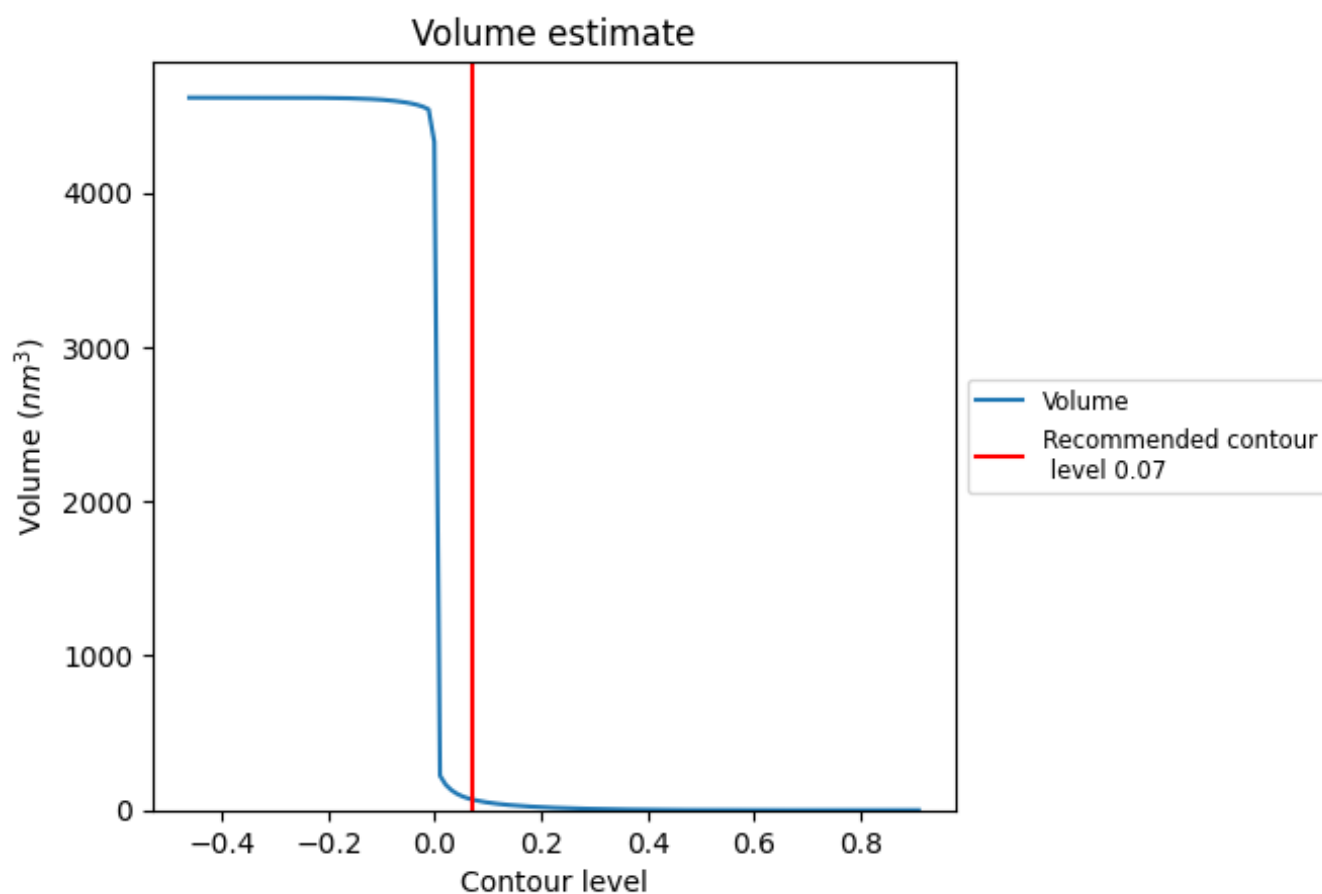
This section contains the results of statistical analysis of the map.

### 7.1 Map-value distribution [i](#)



The map-value distribution is plotted in 128 intervals along the x-axis. The y-axis is logarithmic. A spike in this graph at zero usually indicates that the volume has been masked.

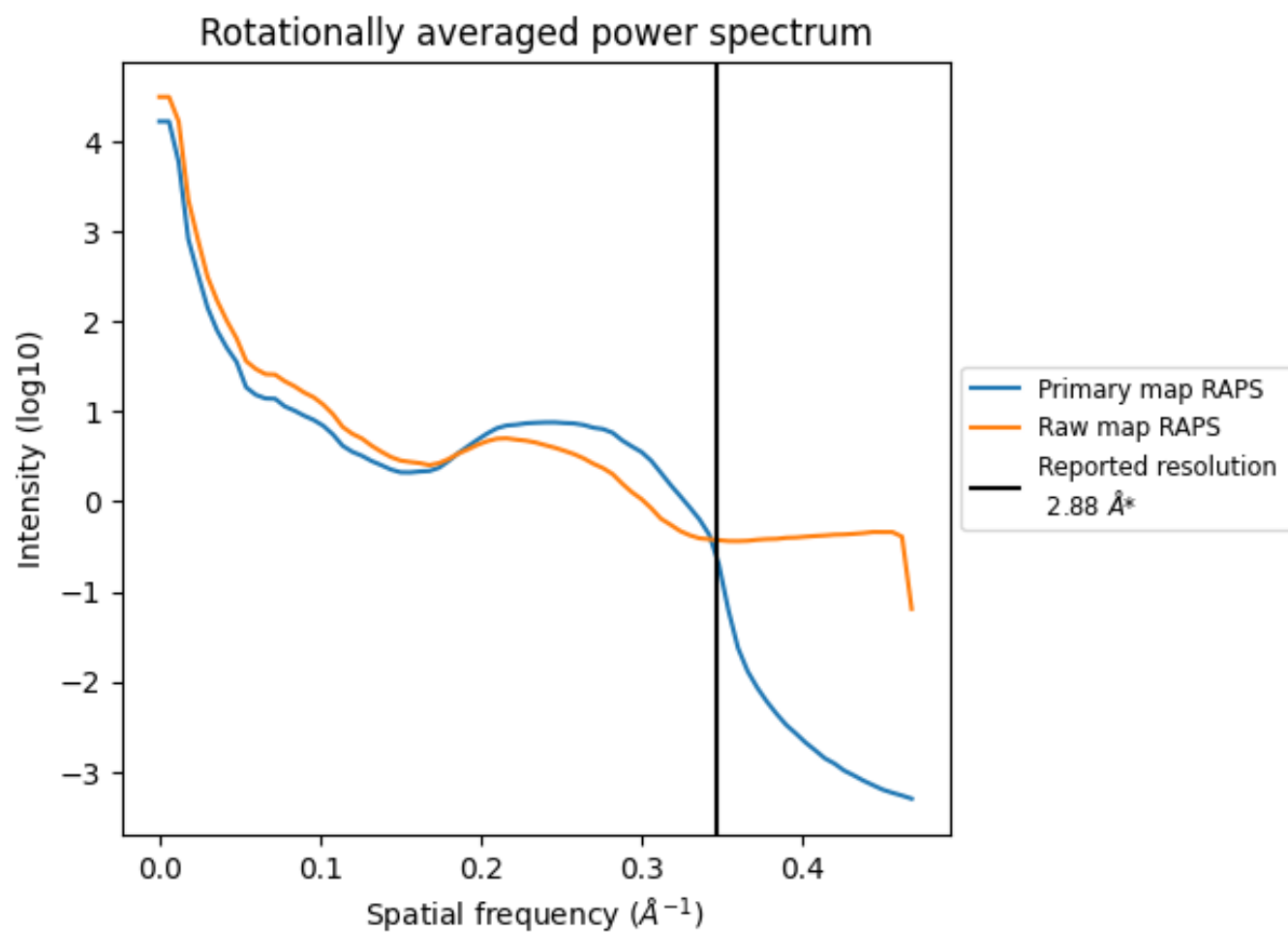
## 7.2 Volume estimate [i](#)



The volume at the recommended contour level is 69  $\text{nm}^3$ ; this corresponds to an approximate mass of 63 kDa.

The volume estimate graph shows how the enclosed volume varies with the contour level. The recommended contour level is shown as a vertical line and the intersection between the line and the curve gives the volume of the enclosed surface at the given level.

### 7.3 Rotationally averaged power spectrum ⓘ



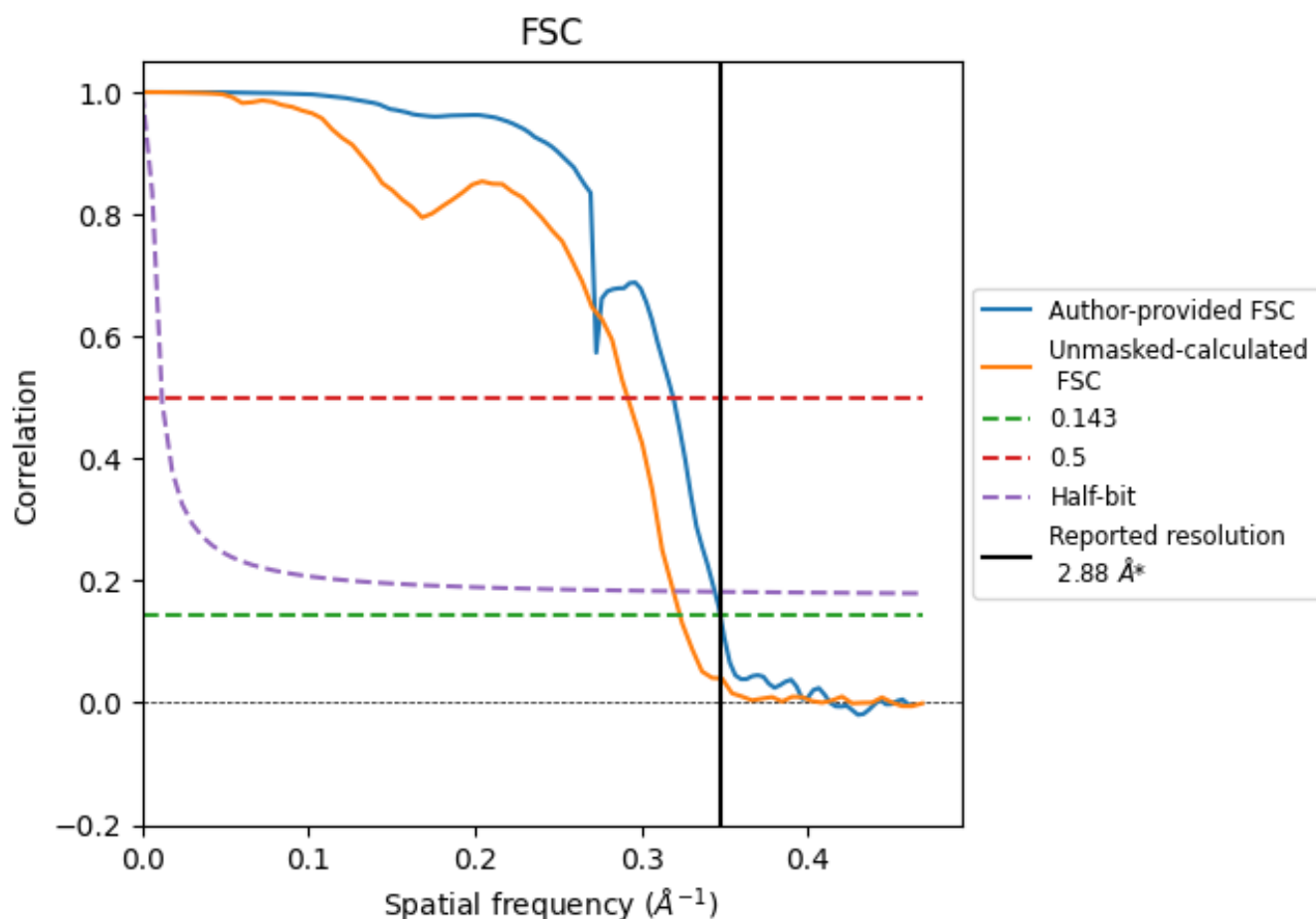
\*Reported resolution corresponds to spatial frequency of  $0.347 \text{ \AA}^{-1}$



## 8 Fourier-Shell correlation [i](#)

Fourier-Shell Correlation (FSC) is the most commonly used method to estimate the resolution of single-particle and subtomogram-averaged maps. The shape of the curve depends on the imposed symmetry, mask and whether or not the two 3D reconstructions used were processed from a common reference. The reported resolution is shown as a black line. A curve is displayed for the half-bit criterion in addition to lines showing the 0.143 gold standard cut-off and 0.5 cut-off.

### 8.1 FSC [i](#)



\*Reported resolution corresponds to spatial frequency of 0.347  $\text{\AA}^{-1}$

## 8.2 Resolution estimates [i](#)

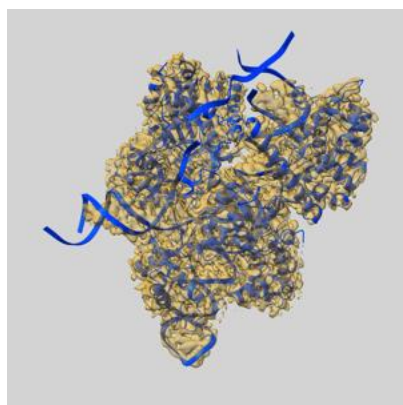
Resolution estimate (Å)	Estimation criterion (FSC cut-off)		
	0.143	0.5	Half-bit
Reported by author	2.88	-	-
Author-provided FSC curve	2.88	3.13	2.90
Unmasked-calculated*	3.10	3.43	3.13

\*Resolution estimate based on FSC curve calculated by comparison of deposited half-maps.

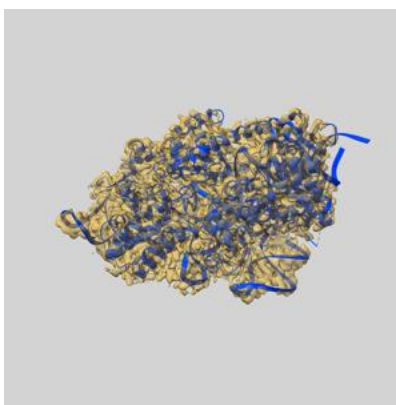
## 9 Map-model fit [i](#)

This section contains information regarding the fit between EMDB map EMD-63768 and PDB model 9MB7. Per-residue inclusion information can be found in section 3 on page 6.

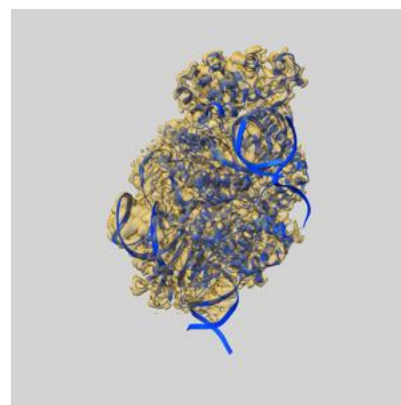
### 9.1 Map-model overlay [i](#)



X



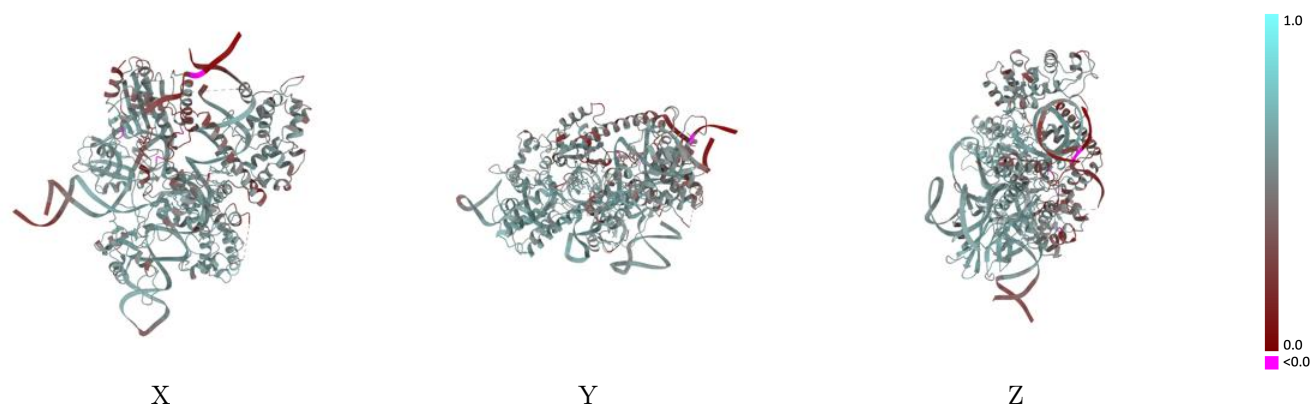
Y



Z

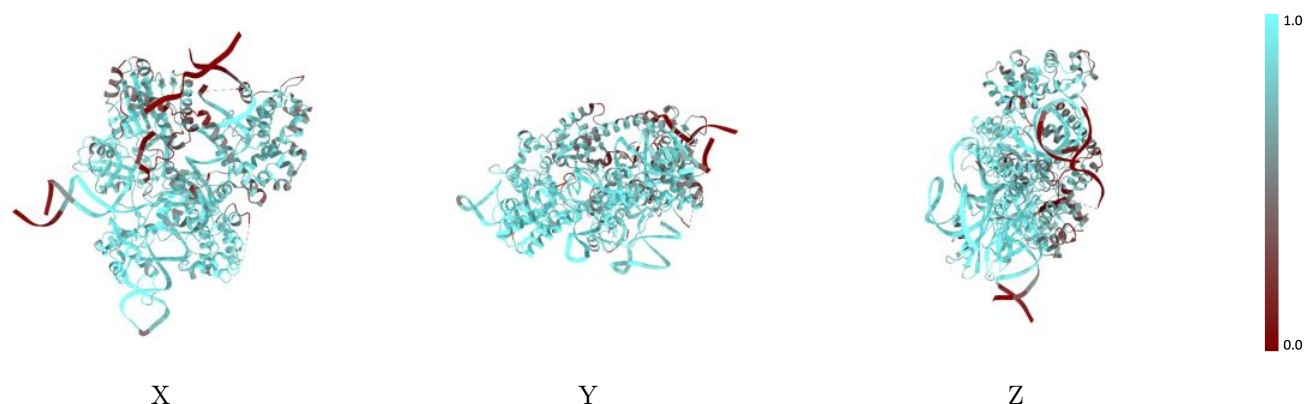
The images above show the 3D surface view of the map at the recommended contour level 0.07 at 50% transparency in yellow overlaid with a ribbon representation of the model coloured in blue. These images allow for the visual assessment of the quality of fit between the atomic model and the map.

## 9.2 Q-score mapped to coordinate model [i](#)



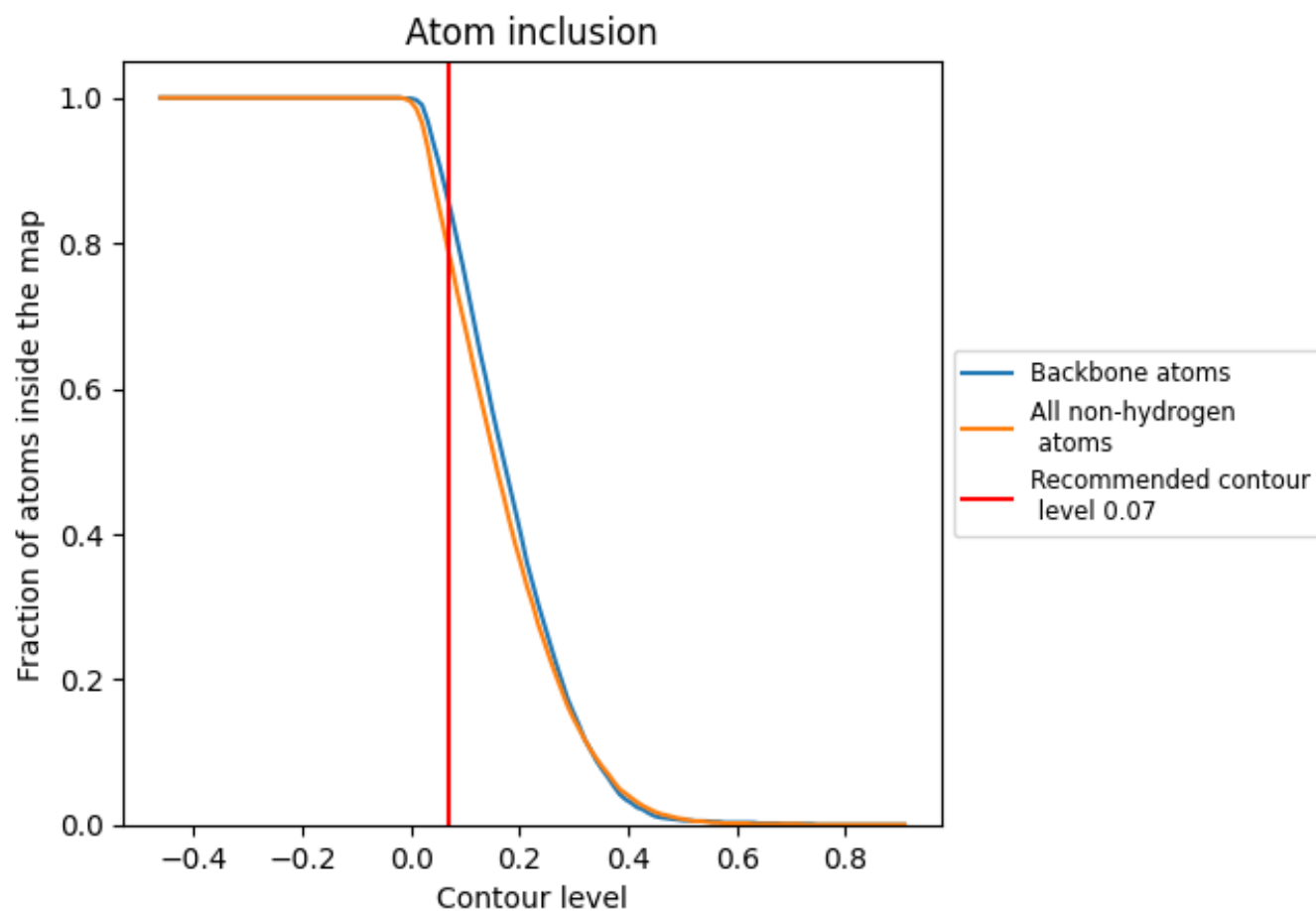
The images above show the model with each residue coloured according to its Q-score. This shows their resolvability in the map with higher Q-score values reflecting better resolvability. Please note: Q-score is calculating the resolvability of atoms, and thus high values are only expected at resolutions at which atoms can be resolved. Low Q-score values may therefore be expected for many entries.

## 9.3 Atom inclusion mapped to coordinate model [i](#)



The images above show the model with each residue coloured according to its atom inclusion. This shows to what extent they are inside the map at the recommended contour level (0.07).

## 9.4 Atom inclusion [i](#)



At the recommended contour level, 86% of all backbone atoms, 78% of all non-hydrogen atoms, are inside the map.

9.5 Map-model fit summary ⓘ

The table lists the average atom inclusion at the recommended contour level (0.07) and Q-score for the entire model and for each chain.

Chain	Atom inclusion	Q-score
All	<div></div> 0.7850	<div></div> 0.5260
A	<div></div> 0.7790	<div></div> 0.5230
B	<div></div> 0.9350	<div></div> 0.5940
C	<div></div> 0.7430	<div></div> 0.5070
D	<div></div> 0.3490	<div></div> 0.3410

