



# Full wwPDB X-ray Structure Validation Report ⓘ

Apr 4, 2026 – 09:44 PM UTC

PDB ID : 9M0L / pdb\_00009m0l  
Title : Crystal structure of Arabidopsis thaliana sulfotransferase SOT18 complexed with glucoraphanin precursor involved in glucosinolate biosynthesis  
Authors : Hirata, R.; Moriyasu, T.; Iwamoto, Y.; Teramoto, T.; Kakuta, Y.  
Deposited on : 2025-02-25  
Resolution : 1.39 Å(reported)

This is a Full wwPDB X-ray Structure Validation Report for a publicly released PDB entry.

We welcome your comments at [validation@mail.wwpdb.org](mailto:validation@mail.wwpdb.org)

A user guide is available at

<https://www.wwpdb.org/validation/2017/XrayValidationReportHelp>

with specific help available everywhere you see the ⓘ symbol.

The types of validation reports are described at

<http://www.wwpdb.org/validation/2017/FAQs#types>.

---

The following versions of software and data (see [references ⓘ](#)) were used in the production of this report:

MolProbity : 4-5-2 with Phenix2.0  
Mogul : 2022.3.0, CSD as543be (2022)  
Xtriage (Phenix) : 2.0  
EDS : 3.0  
Buster-report : wwPDB partial adaption of 1.1.7 (2018)  
Percentile statistics : 20250101.v01 (using entries in the PDB archive January 1st 2025)  
CCP4 : 9.0.010 (Gargrove)  
Density-Fitness : 1.0.12  
Ideal geometry (proteins) : Engh & Huber (2001)  
Ideal geometry (DNA, RNA) : Parkinson et al. (1996)  
Validation Pipeline (wwPDB-VP) : 2.49

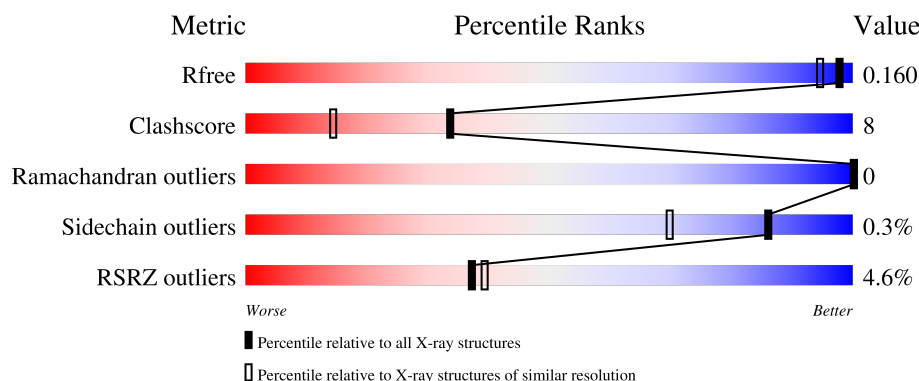
# 1 Overall quality at a glance

The following experimental techniques were used to determine the structure:

*X-RAY DIFFRACTION*

The reported resolution of this entry is 1.39 Å.

Percentile scores (ranging between 0-100) for global validation metrics of the entry are shown in the following graphic. The table shows the number of entries on which the scores are based.



Metric	Whole archive (#Entries)	Similar resolution (#Entries, resolution range(Å))
$R_{free}$	180053	2563 (1.40-1.40)
Clashscore	190562	2660 (1.40-1.40)
Ramachandran outliers	187476	2611 (1.40-1.40)
Sidechain outliers	187428	2610 (1.40-1.40)
RSRZ outliers	180081	2561 (1.40-1.40)

The table below summarises the geometric issues observed across the polymeric chains and their fit to the electron density. The red, orange, yellow and green segments of the lower bar indicate the fraction of residues that contain outliers for  $\geq 3$ , 2, 1 and 0 types of geometric quality criteria respectively. A grey segment represents the fraction of residues that are not modelled. The numeric value for each fraction is indicated below the corresponding segment, with a dot representing fractions  $\leq 5\%$ . The upper red bar (where present) indicates the fraction of residues that have poor fit to the electron density. The numeric value is given above the bar.

Mol	Chain	Length	Quality of chain
1	A	325	<div> <div>5%</div> <div> <div></div> <div>88%</div> <div>12%</div> </div> </div>

## 2 Entry composition [i](#)

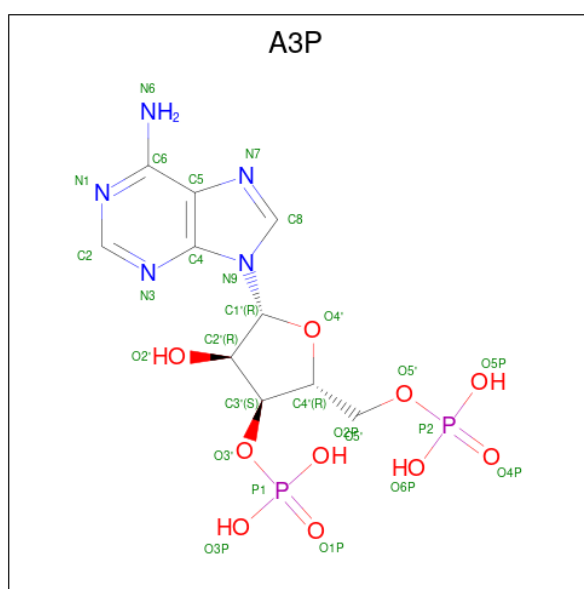
There are 6 unique types of molecules in this entry. The entry contains 6459 atoms, of which 2972 are hydrogens and 0 are deuteriums.

In the tables below, the ZeroOcc column contains the number of atoms modelled with zero occupancy, the AltConf column contains the number of residues with at least one atom in alternate conformation and the Trace column contains the number of residues modelled with at most 2 atoms.

- Molecule 1 is a protein called Cytosolic sulfotransferase 18.

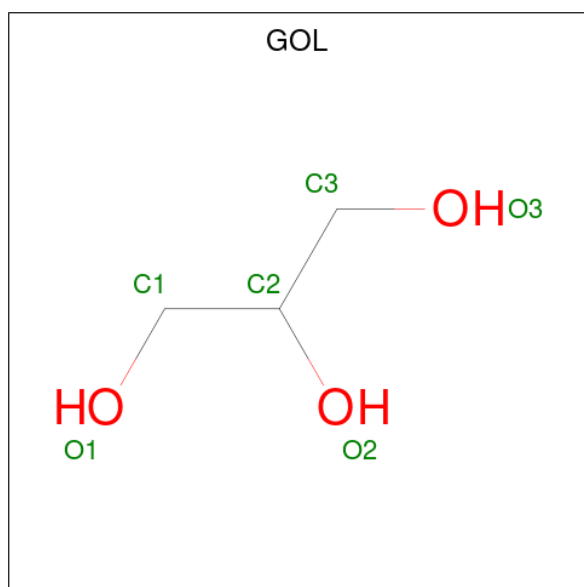
Mol	Chain	Residues	Atoms						ZeroOcc	AltConf	Trace
			Total	C	H	N	O	S			
1	A	325	5848	1902	2899	483	547	17	0	56	0

- Molecule 2 is ADENOSINE-3'-5'-DIPHOSPHATE (CCD ID: A3P) (formula:  $C_{10}H_{15}N_5O_{10}P_2$ ) (labeled as "Ligand of Interest" by depositor).



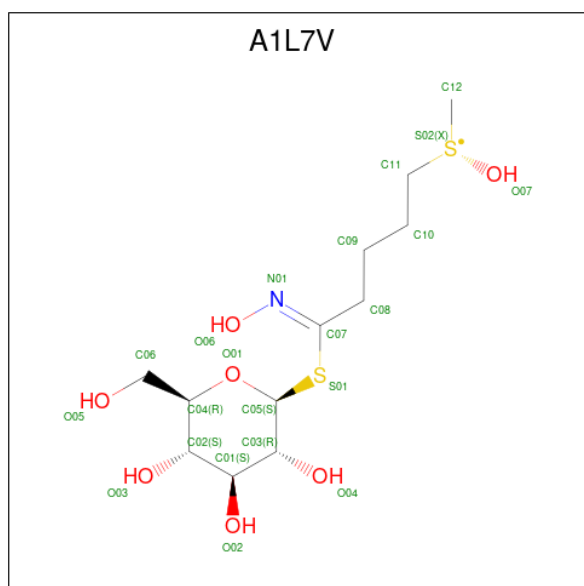
Mol	Chain	Residues	Atoms						ZeroOcc	AltConf
			Total	C	H	N	O	P		
2	A	1	38	10	11	5	10	2	0	0

- Molecule 3 is GLYCEROL (CCD ID: GOL) (formula:  $C_3H_8O_3$ ) (labeled as "Ligand of Interest" by depositor).



Mol	Chain	Residues	Atoms				ZeroOcc	AltConf
3	A	1	Total	C	H	O	0	0
			14	3	8	3		

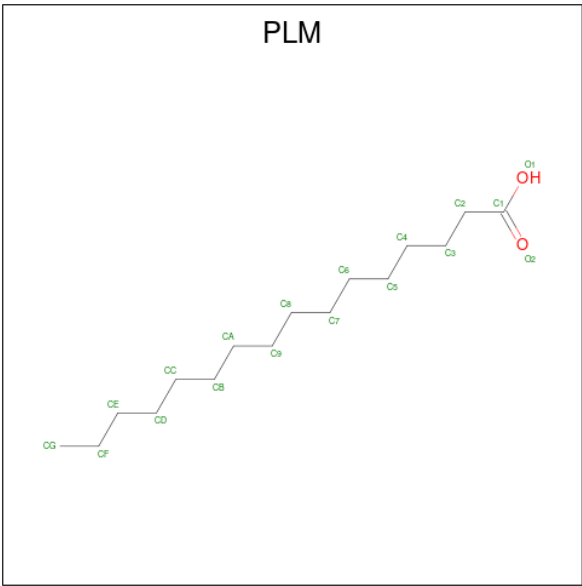
- Molecule 4 is [(2 {S},3 {R},4 {S},5 {S},6 {R})-6-(hydroxymethyl)-3,4,5-tris(oxidanyl)oxan-2-yl] (1 {Z})-5-[methyl(oxidanyl)- $\text{S}^{\wedge}\{3\}$ -sulfanyl]- {N}-oxidanyl-pentanimidothioate (CCD ID: A1L7V) (formula:  $\text{C}_{12}\text{H}_{24}\text{NO}_7\text{S}_2$ ) (labeled as "Ligand of Interest" by depositor).



Mol	Chain	Residues	Atoms					ZeroOcc	AltConf
4	A	1	Total	C	H	N	O	0	0
			45	12	23	1	7		

- Molecule 5 is PALMITIC ACID (CCD ID: PLM) (formula:  $\text{C}_{16}\text{H}_{32}\text{O}_2$ ) (labeled as "Ligand

of Interest" by depositor).



Mol	Chain	Residues	Atoms				ZeroOcc	AltConf
5	A	1	Total	C	H	O	0	0
			49	16	31	2		

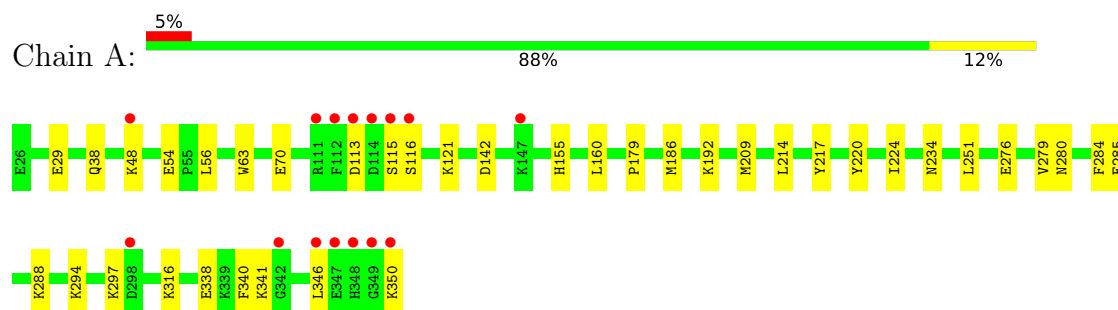
- Molecule 6 is water.

Mol	Chain	Residues	Atoms		ZeroOcc	AltConf
6	A	465	Total	O	0	0
			465	465		

### 3 Residue-property plots [i](#)

These plots are drawn for all protein, RNA, DNA and oligosaccharide chains in the entry. The first graphic for a chain summarises the proportions of the various outlier classes displayed in the second graphic. The second graphic shows the sequence view annotated by issues in geometry and electron density. Residues are color-coded according to the number of geometric quality criteria for which they contain at least one outlier: green = 0, yellow = 1, orange = 2 and red = 3 or more. A red dot above a residue indicates a poor fit to the electron density ( $RSRZ > 2$ ). Stretches of 2 or more consecutive residues without any outlier are shown as a green connector. Residues present in the sample, but not in the model, are shown in grey.

- Molecule 1: Cytosolic sulfotransferase 18



## 4 Data and refinement statistics

Property	Value	Source
Space group	C 1 2 1	Depositor
Cell constants a, b, c, $\alpha$ , $\beta$ , $\gamma$	130.55Å 63.90Å 53.11Å 90.00° 103.56° 90.00°	Depositor
Resolution (Å)	40.47 – 1.39 40.47 – 1.39	Depositor EDS
% Data completeness (in resolution range)	95.1 (40.47-1.39) 95.1 (40.47-1.39)	Depositor EDS
$R_{merge}$	(Not available)	Depositor
$R_{sym}$	(Not available)	Depositor
$\langle I/\sigma(I) \rangle$ <sup>1</sup>	1.45 (at 1.39Å)	Xtriage
Refinement program	PHENIX (1.20.1_4487: ???)	Depositor
R, $R_{free}$	0.135 , 0.160 0.136 , 0.160	Depositor DCC
$R_{free}$ test set	2000 reflections (2.34%)	wwPDB-VP
Wilson B-factor (Å <sup>2</sup> )	13.4	Xtriage
Anisotropy	0.291	Xtriage
Bulk solvent $k_{sol}$ (e/Å <sup>3</sup> ), $B_{sol}$ (Å <sup>2</sup> )	0.38 , 44.9	EDS
L-test for twinning <sup>2</sup>	$\langle  L  \rangle = 0.49$ , $\langle L^2 \rangle = 0.32$	Xtriage
Estimated twinning fraction	No twinning to report.	Xtriage
$F_o, F_c$ correlation	0.97	EDS
Total number of atoms	6459	wwPDB-VP
Average B, all atoms (Å <sup>2</sup> )	20.0	wwPDB-VP

Xtriage's analysis on translational NCS is as follows: *The largest off-origin peak in the Patterson function is 6.52% of the height of the origin peak. No significant pseudotranslation is detected.*

<sup>1</sup>Intensities estimated from amplitudes.

<sup>2</sup>Theoretical values of  $\langle |L| \rangle$ ,  $\langle L^2 \rangle$  for acentric reflections are 0.5, 0.333 respectively for untwinned datasets, and 0.375, 0.2 for perfectly twinned datasets.

## 5 Model quality

### 5.1 Standard geometry

Bond lengths and bond angles in the following residue types are not validated in this section: GOL, PLM, A3P, A1L7V

The Z score for a bond length (or angle) is the number of standard deviations the observed value is removed from the expected value. A bond length (or angle) with  $|Z| > 5$  is considered an outlier worth inspection. RMSZ is the root-mean-square of all Z scores of the bond lengths (or angles).

Mol	Chain	Bond lengths		Bond angles	
		RMSZ	$\# Z  > 5$	RMSZ	$\# Z  > 5$
1	A	0.98	1/3205 (0.0%)	0.92	0/4320

All (1) bond length outliers are listed below:

Mol	Chain	Res	Type	Atoms	Z	Observed(Å)	Ideal(Å)
1	A	340	PHE	CE1-CZ	-5.25	1.23	1.38

There are no bond angle outliers.

There are no chirality outliers.

There are no planarity outliers.

### 5.2 Too-close contacts

In the following table, the Non-H and H(model) columns list the number of non-hydrogen atoms and hydrogen atoms in the chain respectively. The H(added) column lists the number of hydrogen atoms added and optimized by MolProbity. The Clashes column lists the number of clashes within the asymmetric unit, whereas Symm-Clashes lists symmetry-related clashes.

Mol	Chain	Non-H	H(model)	H(added)	Clashes	Symm-Clashes
1	A	2949	2899	2712	42	0
2	A	27	11	11	0	0
3	A	6	8	8	2	0
4	A	22	23	0	2	0
5	A	18	31	31	3	0
6	A	465	0	0	20	3
All	All	3487	2972	2762	45	3

The all-atom clashscore is defined as the number of clashes found per 1000 atoms (including hydrogen atoms). The all-atom clashscore for this structure is 8.



All (45) close contacts within the same asymmetric unit are listed below, sorted by their clash magnitude.

Atom-1	Atom-2	Interatomic distance (Å)	Clash overlap (Å)
1:A:234[A]:ASN:OD1	6:A:501:HOH:O	1.78	1.02
1:A:113:ASP:HB2	1:A:115:SER:O	1.70	0.91
1:A:63:TRP:HE1	5:A:404:PLM:H42	1.38	0.89
1:A:280[B]:ASN:ND2	6:A:506:HOH:O	2.05	0.89
1:A:234[A]:ASN:ND2	6:A:508:HOH:O	2.08	0.87
1:A:285[A]:GLU:OE2	6:A:502:HOH:O	1.94	0.84
3:A:402:GOL:O2	6:A:503:HOH:O	1.96	0.82
1:A:285[B]:GLU:OE2	6:A:504:HOH:O	2.01	0.78
1:A:29:GLU:OE1	6:A:505:HOH:O	2.05	0.74
1:A:142:ASP:OD1	6:A:507:HOH:O	2.07	0.70
1:A:54[B]:GLU:OE2	6:A:509:HOH:O	2.10	0.70
1:A:63:TRP:NE1	5:A:404:PLM:H42	2.08	0.69
1:A:113:ASP:HB3	1:A:115:SER:H	1.69	0.58
1:A:251[B]:LEU:HD21	1:A:276:GLU:HG3	1.85	0.58
1:A:160:LEU:CD2	6:A:826:HOH:O	2.51	0.58
1:A:192[A]:LYS:NZ	6:A:511:HOH:O	2.35	0.55
1:A:54[B]:GLU:HG2	6:A:612:HOH:O	2.07	0.54
1:A:160:LEU:HD22	6:A:826:HOH:O	2.12	0.50
3:A:402:GOL:H12	6:A:575:HOH:O	2.11	0.50
1:A:113:ASP:CB	1:A:115:SER:O	2.54	0.49
1:A:284:PHE:CZ	1:A:288[B]:LYS:HD2	2.50	0.47
1:A:186[A]:MET:HG3	4:A:403:A1L7V:C12	2.44	0.47
1:A:115:SER:O	1:A:116[B]:SER:CB	2.62	0.47
1:A:209[B]:MET:HE3	6:A:833:HOH:O	2.14	0.46
1:A:251[A]:LEU:HD23	1:A:279:VAL:HG21	1.99	0.45
1:A:38:GLN:HG2	1:A:70:GLU:OE2	2.16	0.45
1:A:155:HIS:HB2	1:A:217:TYR:CZ	2.52	0.45
1:A:346:LEU:HD13	1:A:350:LYS:HE3	1.99	0.45
1:A:294:LYS:HE2	6:A:527:HOH:O	2.17	0.45
1:A:297:LYS:NZ	6:A:523:HOH:O	2.49	0.45
1:A:54[B]:GLU:HG2	1:A:54[B]:GLU:O	2.16	0.44
5:A:404:PLM:H82	5:A:404:PLM:HB1	1.66	0.44
1:A:220:TYR:CZ	1:A:224:ILE:HD11	2.54	0.42
1:A:338:GLU:OE1	1:A:341:LYS:NZ	2.51	0.42
1:A:179[A]:PRO:HG2	6:A:534:HOH:O	2.19	0.42
1:A:115:SER:O	1:A:116[A]:SER:HB3	2.20	0.41
1:A:294:LYS:HE2	1:A:294:LYS:HB2	1.87	0.41
1:A:316[A]:LYS:O	6:A:510:HOH:O	2.21	0.41
1:A:56:LEU:CD1	1:A:214[B]:LEU:HD22	2.51	0.41
1:A:121:LYS:HE3	6:A:746:HOH:O	2.20	0.40

*Continued on next page...*

*Continued from previous page...*

Atom-1	Atom-2	Interatomic distance (Å)	Clash overlap (Å)
1:A:186[B]:MET:HG3	4:A:403:A1L7V:C12	2.52	0.40
1:A:115:SER:O	1:A:116[A]:SER:CB	2.63	0.40

All (3) symmetry-related close contacts are listed below. The label for Atom-2 includes the symmetry operator and encoded unit-cell translations to be applied.

Atom-1	Atom-2	Interatomic distance (Å)	Clash overlap (Å)
6:A:776:HOH:O	6:A:889:HOH:O[4_445]	2.01	0.19
6:A:831:HOH:O	6:A:900:HOH:O[4_455]	2.05	0.15
6:A:779:HOH:O	6:A:889:HOH:O[4_445]	2.14	0.06

## 5.3 Torsion angles [i](#)

### 5.3.1 Protein backbone [i](#)

In the following table, the Percentiles column shows the percent Ramachandran outliers of the chain as a percentile score with respect to all X-ray entries followed by that with respect to entries of similar resolution.

The Analysed column shows the number of residues for which the backbone conformation was analysed, and the total number of residues.

Mol	Chain	Analysed	Favoured	Allowed	Outliers	Percentiles	
1	A	379/325 (117%)	370 (98%)	9 (2%)	0	100	100

There are no Ramachandran outliers to report.

### 5.3.2 Protein sidechains [i](#)

In the following table, the Percentiles column shows the percent sidechain outliers of the chain as a percentile score with respect to all X-ray entries followed by that with respect to entries of similar resolution.

The Analysed column shows the number of residues for which the sidechain conformation was analysed, and the total number of residues.

Mol	Chain	Analysed	Rotameric	Outliers	Percentiles	
1	A	341/288 (118%)	339 (99%)	2 (1%)	78	56

All (2) residues with a non-rotameric sidechain are listed below:

Mol	Chain	Res	Type
1	A	48[A]	LYS
1	A	48[B]	LYS

Sometimes sidechains can be flipped to improve hydrogen bonding and reduce clashes. There are no such sidechains identified.

### 5.3.3 RNA ⓘ

There are no RNA molecules in this entry.

## 5.4 Non-standard residues in protein, DNA, RNA chains ⓘ

There are no non-standard protein/DNA/RNA residues in this entry.

## 5.5 Carbohydrates ⓘ

There are no oligosaccharides in this entry.

## 5.6 Ligand geometry ⓘ

4 ligands are modelled in this entry.

In the following table, the Counts columns list the number of bonds (or angles) for which Mogul statistics could be retrieved, the number of bonds (or angles) that are observed in the model and the number of bonds (or angles) that are defined in the Chemical Component Dictionary. The Link column lists molecule types, if any, to which the group is linked. The Z score for a bond length (or angle) is the number of standard deviations the observed value is removed from the expected value. A bond length (or angle) with  $|Z| > 2$  is considered an outlier worth inspection. RMSZ is the root-mean-square of all Z scores of the bond lengths (or angles).

Mol	Type	Chain	Res	Link	Bond lengths			Bond angles		
					Counts	RMSZ	$\# Z  > 2$	Counts	RMSZ	$\# Z  > 2$
5	PLM	A	404	-	17,17,17	1.35	1 (5%)	17,17,17	1.29	3 (17%)
4	A1L7V	A	403	-	18,22,22	0.95	0	22,29,29	1.99	5 (22%)
3	GOL	A	402	-	5,5,5	0.88	0	5,5,5	1.24	1 (20%)
2	A3P	A	401	-	29,29,29	2.21	8 (27%)	44,45,45	1.07	2 (4%)

In the following table, the Chirals column lists the number of chiral outliers, the number of chiral centers analysed, the number of these observed in the model and the number defined in the

Chemical Component Dictionary. Similar counts are reported in the Torsion and Rings columns.  
'-' means no outliers of that kind were identified.

Mol	Type	Chain	Res	Link	Chirals	Torsions	Rings
5	PLM	A	404	-	-	7/15/15/15	-
4	A1L7V	A	403	-	-	4/10/35/35	0/1/1/1
3	GOL	A	402	-	-	2/4/4/4	-
2	A3P	A	401	-	-	1/15/31/31	0/3/3/3

All (9) bond length outliers are listed below:

Mol	Chain	Res	Type	Atoms	Z	Observed(Å)	Ideal(Å)
2	A	401	A3P	C3'-C4'	-6.22	1.36	1.52
2	A	401	A3P	C2'-C1'	-3.64	1.42	1.53
2	A	401	A3P	O4'-C4'	3.62	1.53	1.45
2	A	401	A3P	C8-N9	-3.61	1.31	1.37
2	A	401	A3P	C2'-C3'	3.44	1.60	1.53
2	A	401	A3P	C5-N7	-3.15	1.33	1.39
2	A	401	A3P	P1-O3'	2.83	1.64	1.59
5	A	404	PLM	C2-C1	2.24	1.55	1.50
2	A	401	A3P	O4'-C1'	2.05	1.46	1.42

All (11) bond angle outliers are listed below:

Mol	Chain	Res	Type	Atoms	Z	Observed(°)	Ideal(°)
4	A	403	A1L7V	O06-N01-C07	6.08	121.19	110.85
4	A	403	A1L7V	O01-C05-C03	-3.34	105.71	110.32
4	A	403	A1L7V	O03-C02-C01	-3.05	103.18	110.38
2	A	401	A3P	C4'-O4'-C1'	-2.66	103.58	109.47
5	A	404	PLM	C4-C3-C2	2.53	122.43	113.13
5	A	404	PLM	O2-C1-C2	-2.41	115.46	123.09
4	A	403	A1L7V	C01-C02-C04	2.35	114.49	110.23
5	A	404	PLM	C7-C6-C5	2.21	125.56	114.37
4	A	403	A1L7V	O04-C03-C05	-2.20	106.39	110.30
3	A	402	GOL	C3-C2-C1	-2.10	104.09	111.80
2	A	401	A3P	O2'-C2'-C3'	2.10	117.06	111.19

There are no chirality outliers.

All (14) torsion outliers are listed below:

Mol	Chain	Res	Type	Atoms
3	A	402	GOL	C1-C2-C3-O3
4	A	403	A1L7V	C03-C05-S01-C07

*Continued on next page...*

*Continued from previous page...*

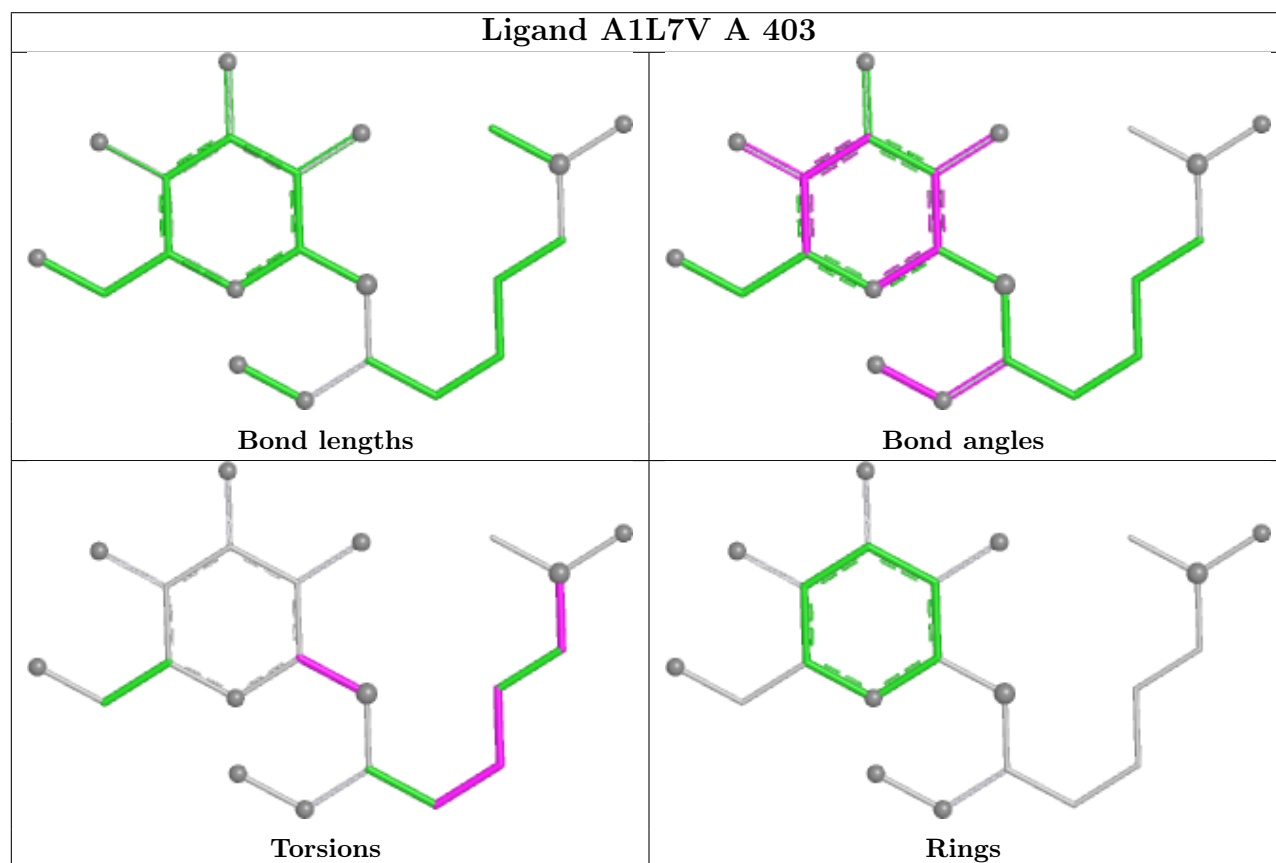
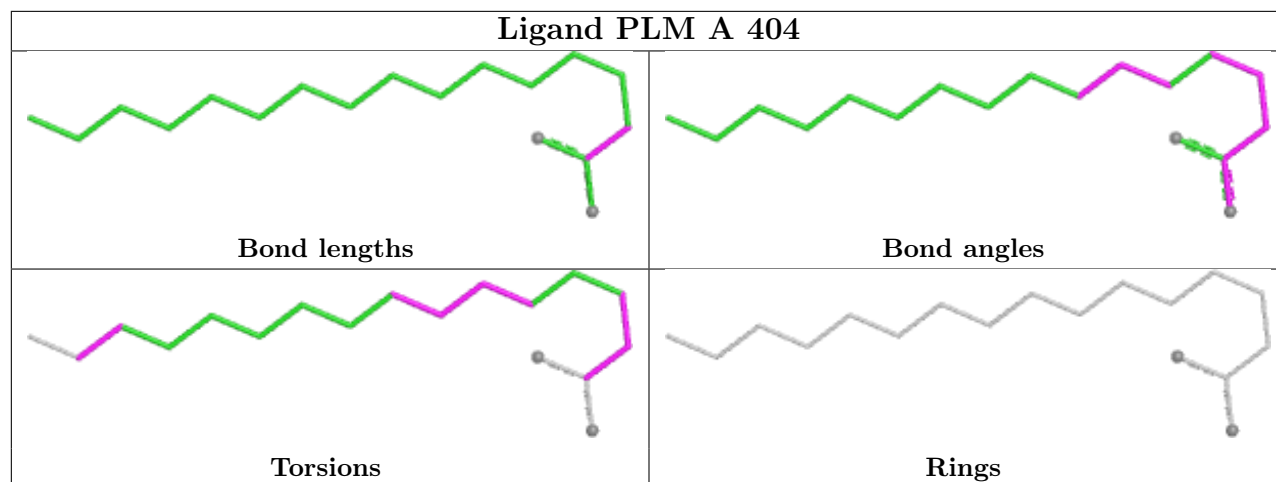
Mol	Chain	Res	Type	Atoms
5	A	404	PLM	C5-C6-C7-C8
4	A	403	A1L7V	C07-C08-C09-C10
5	A	404	PLM	C1-C2-C3-C4
3	A	402	GOL	O2-C2-C3-O3
5	A	404	PLM	C4-C5-C6-C7
5	A	404	PLM	CD-CE-CF-CG
4	A	403	A1L7V	C08-C09-C10-C11
4	A	403	A1L7V	C10-C11-S02-C12
5	A	404	PLM	O1-C1-C2-C3
5	A	404	PLM	O2-C1-C2-C3
5	A	404	PLM	C6-C7-C8-C9
2	A	401	A3P	C2'-C1'-N9-C8

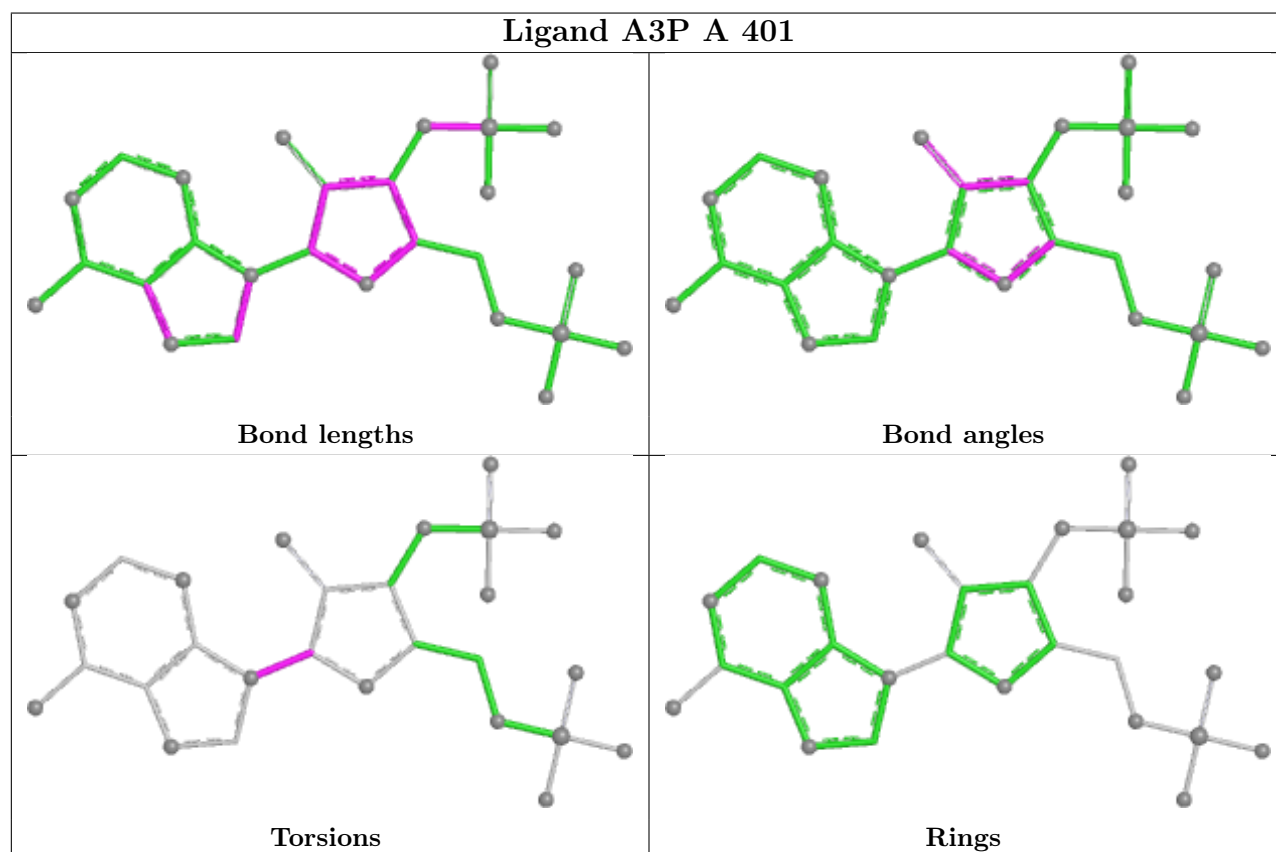
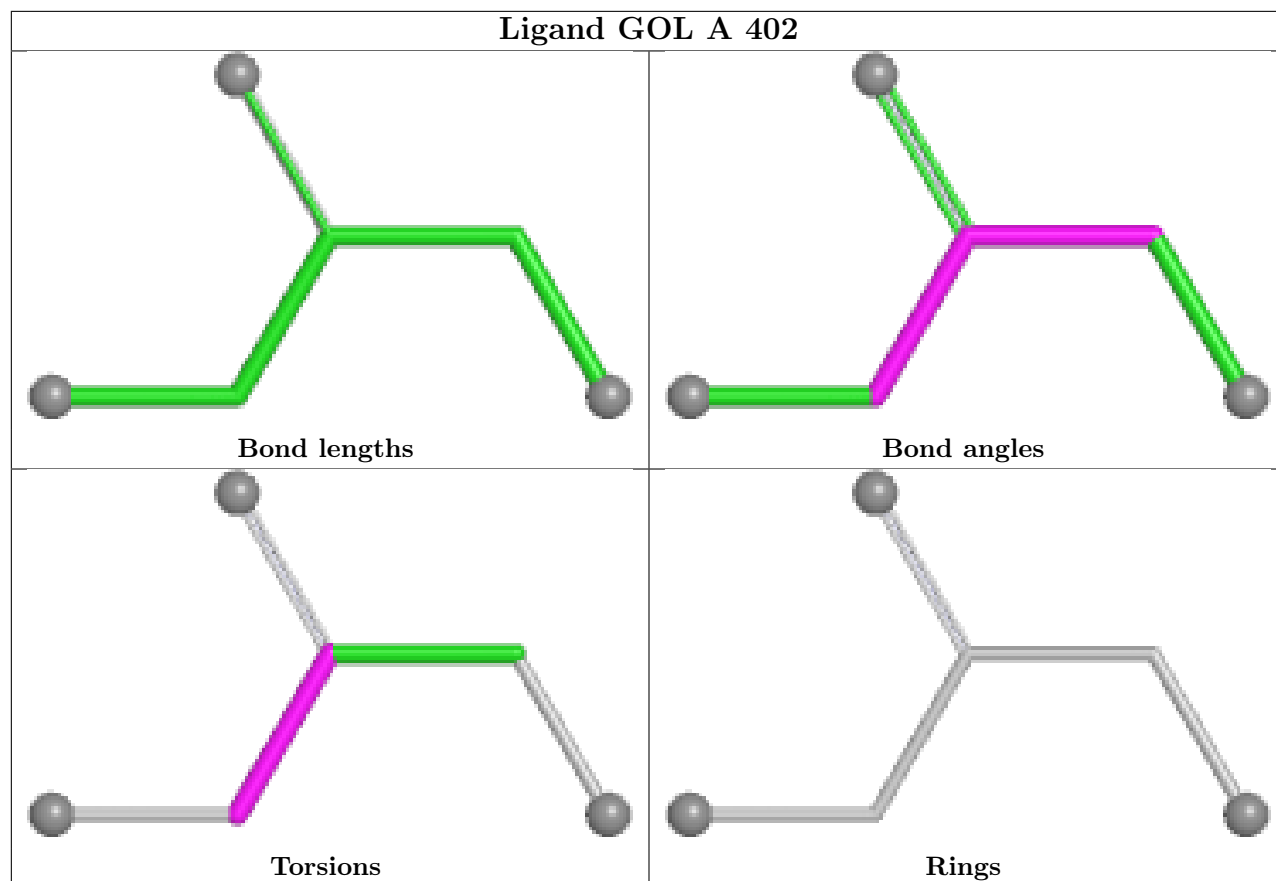
There are no ring outliers.

3 monomers are involved in 7 short contacts:

Mol	Chain	Res	Type	Clashes	Symm-Clashes
5	A	404	PLM	3	0
4	A	403	A1L7V	2	0
3	A	402	GOL	2	0

The following is a two-dimensional graphical depiction of Mogul quality analysis of bond lengths, bond angles, torsion angles, and ring geometry for all instances of the Ligand of Interest. In addition, ligands with molecular weight > 250 and outliers as shown on the validation Tables will also be included. For torsion angles, if less than 5% of the Mogul distribution of torsion angles is within 10 degrees of the torsion angle in question, then that torsion angle is considered an outlier. Any bond that is central to one or more torsion angles identified as an outlier by Mogul will be highlighted in the graph. For rings, the root-mean-square deviation (RMSD) between the ring in question and similar rings identified by Mogul is calculated over all ring torsion angles. If the average RMSD is greater than 60 degrees and the minimal RMSD between the ring in question and any Mogul-identified rings is also greater than 60 degrees, then that ring is considered an outlier. The outliers are highlighted in purple. The color gray indicates Mogul did not find sufficient equivalents in the CSD to analyse the geometry.





## 5.7 Other polymers

There are no such residues in this entry.

## 5.8 Polymer linkage issues

There are no chain breaks in this entry.



## 6 Fit of model and data [i](#)

### 6.1 Protein, DNA and RNA chains [i](#)

In the following table, the column labelled ‘#RSRZ > 2’ contains the number (and percentage) of RSRZ outliers, followed by percent RSRZ outliers for the chain as percentile scores relative to all X-ray entries and entries of similar resolution. The OWAB column contains the minimum, median, 95<sup>th</sup> percentile and maximum values of the occupancy-weighted average B-factor per residue. The column labelled ‘Q < 0.9’ lists the number of (and percentage) of residues with an average occupancy less than 0.9.

Mol	Chain	Analysed	<RSRZ>	#RSRZ>2	OWAB(Å <sup>2</sup> )	Q<0.9
1	A	325/325 (100%)	-0.27	15 (4%) 37 39	6, 15, 35, 63	36 (11%)

All (15) RSRZ outliers are listed below:

Mol	Chain	Res	Type	RSRZ
1	A	115	SER	5.5
1	A	113	ASP	4.7
1	A	350	LYS	3.9
1	A	116[A]	SER	3.9
1	A	347	GLU	3.6
1	A	349	GLY	3.5
1	A	298[A]	ASP	3.5
1	A	111[A]	ARG	3.2
1	A	112	PHE	3.1
1	A	48[A]	LYS	3.1
1	A	348	HIS	3.1
1	A	114	ASP	2.3
1	A	147	LYS	2.2
1	A	346	LEU	2.2
1	A	342	GLY	2.2

### 6.2 Non-standard residues in protein, DNA, RNA chains [i](#)

There are no non-standard protein/DNA/RNA residues in this entry.

### 6.3 Carbohydrates [i](#)

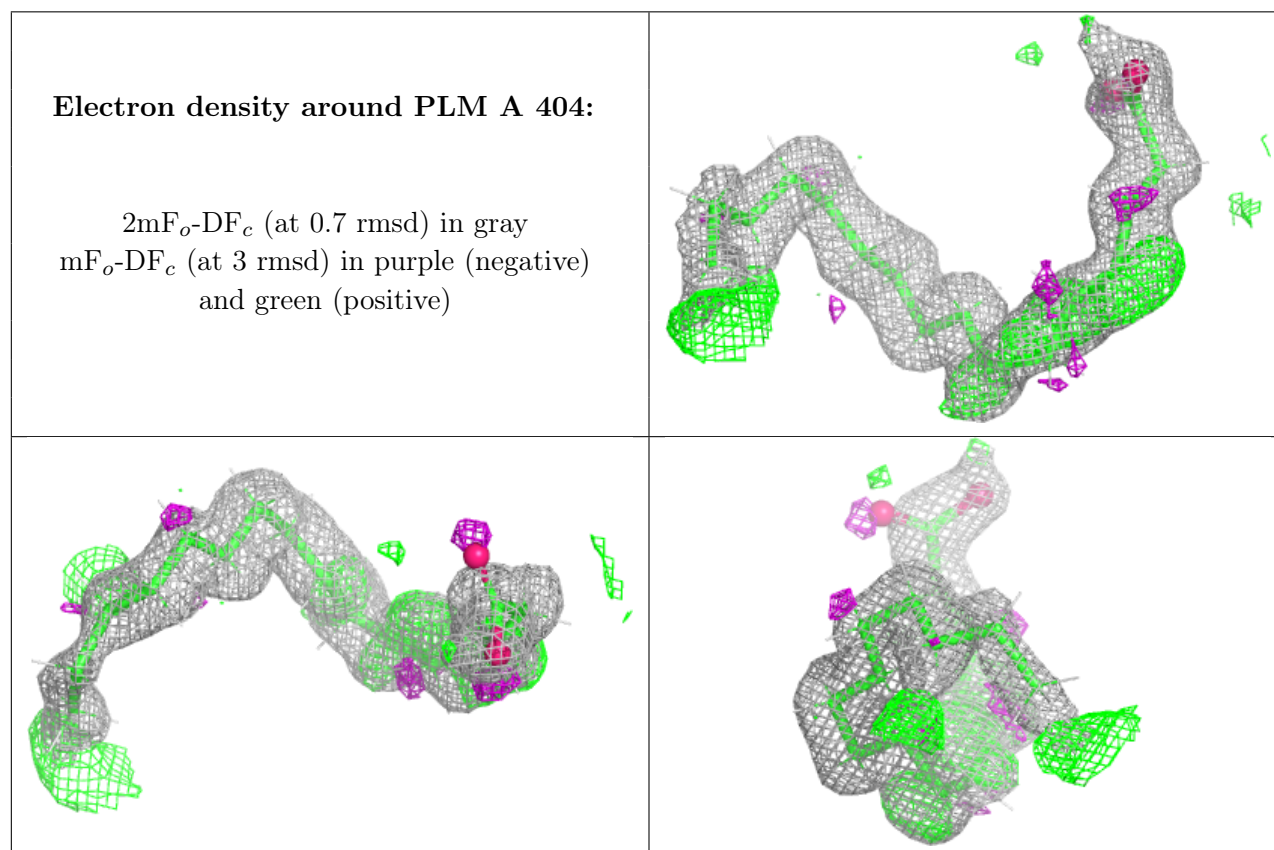
There are no oligosaccharides in this entry.

## 6.4 Ligands [i](#)

In the following table, the Atoms column lists the number of modelled atoms in the group and the number defined in the chemical component dictionary. The B-factors column lists the minimum, median, 95<sup>th</sup> percentile and maximum values of B factors of atoms in the group. The column labelled 'Q<0.9' lists the number of atoms with occupancy less than 0.9.

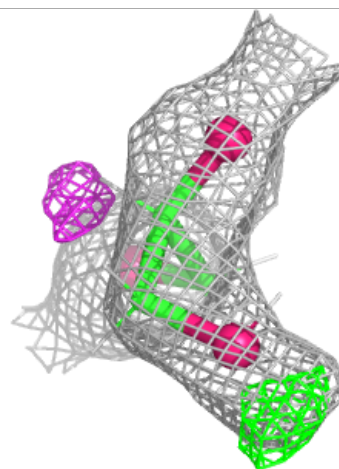
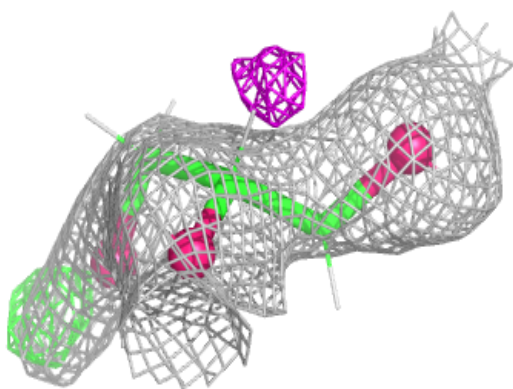
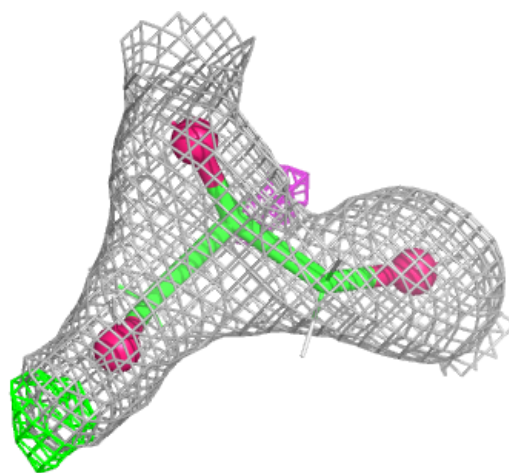
Mol	Type	Chain	Res	Atoms	RSCC	RSR	B-factors( $\text{\AA}^2$ )	Q<0.9
5	PLM	A	404	18/18	0.84	0.18	15,30,52,61	0
3	GOL	A	402	6/6	0.90	0.14	23,52,66,67	0
4	A1L7V	A	403	22/22	0.93	0.16	16,28,85,151	0
2	A3P	A	401	27/27	0.99	0.03	8,10,13,14	0

The following is a graphical depiction of the model fit to experimental electron density of all instances of the Ligand of Interest. In addition, ligands with molecular weight > 250 and outliers as shown on the geometry validation Tables will also be included. Each fit is shown from different orientation to approximate a three-dimensional view.



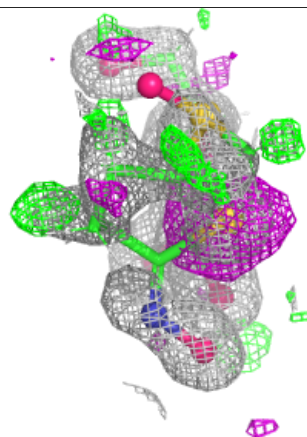
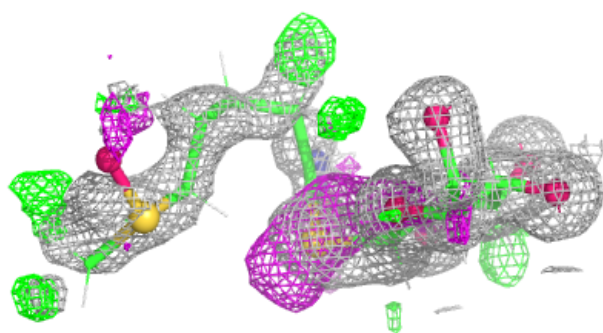
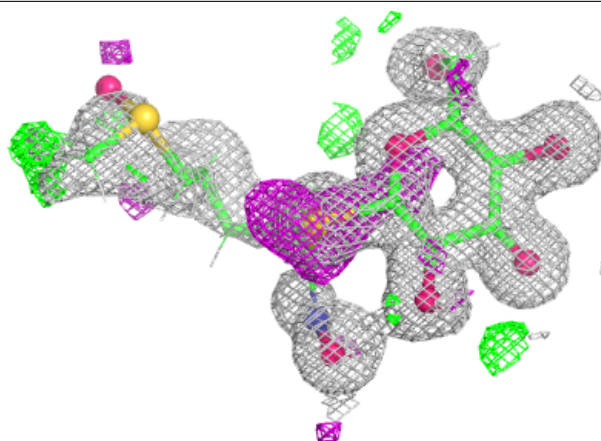
**Electron density around GOL A 402:**

$2mF_o-DF_c$  (at 0.7 rmsd) in gray  
 $mF_o-DF_c$  (at 3 rmsd) in purple (negative)  
and green (positive)



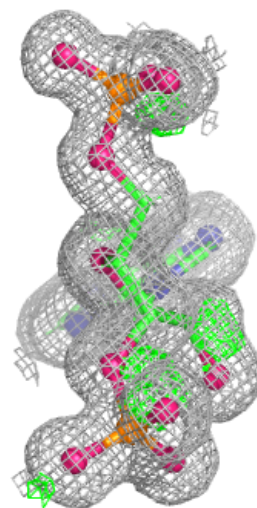
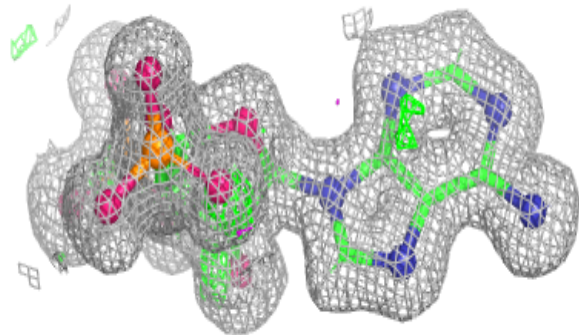
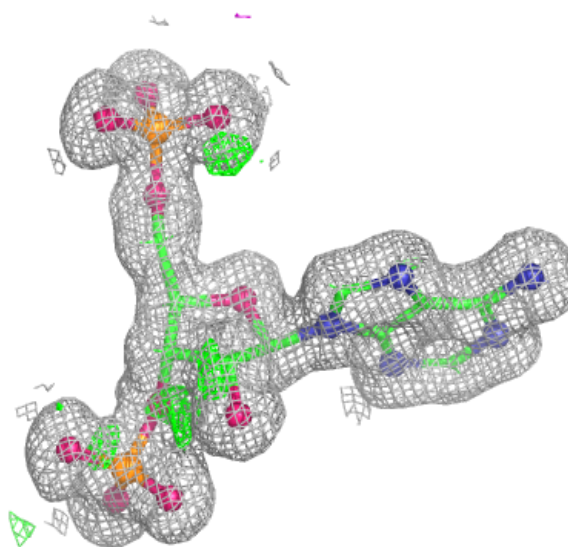
**Electron density around A1L7V A 403:**

$2mF_o - DF_c$  (at 0.7 rmsd) in gray  
 $mF_o - DF_c$  (at 3 rmsd) in purple (negative)  
and green (positive)



**Electron density around A3P A 401:**

$2mF_o-DF_c$  (at 0.7 rmsd) in gray  
 $mF_o-DF_c$  (at 3 rmsd) in purple (negative)  
and green (positive)



## 6.5 Other polymers [i](#)

There are no such residues in this entry.