



Full wwPDB EM Validation Report ⓘ

Apr 6, 2026 – 12:28 AM UTC

PDB ID : 9IU3 / pdb_00009iu3
EMDB ID : EMD-60888
Title : Cryo-EM structure of the large serine recombinase Bxb1 in complex with attP and attB (GT/TT CDN) in the post-strand exchange state
Authors : Soma, T.; Hiraizumi, M.; Yamashita, K.; Nishimasu, H.
Deposited on : 2024-07-20
Resolution : 3.97 Å(reported)

This is a Full wwPDB EM Validation Report for a publicly released PDB entry.

We welcome your comments at validation@mail.wwpdb.org

A user guide is available at

<https://www.wwpdb.org/validation/2017/EMValidationReportHelp>
with specific help available everywhere you see the ⓘ symbol.

The types of validation reports are described at

<http://www.wwpdb.org/validation/2017/FAQs#types>.

The following versions of software and data (see [references ⓘ](#)) were used in the production of this report:

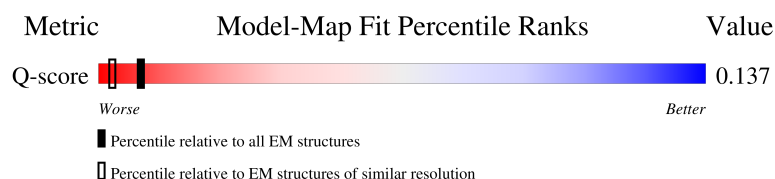
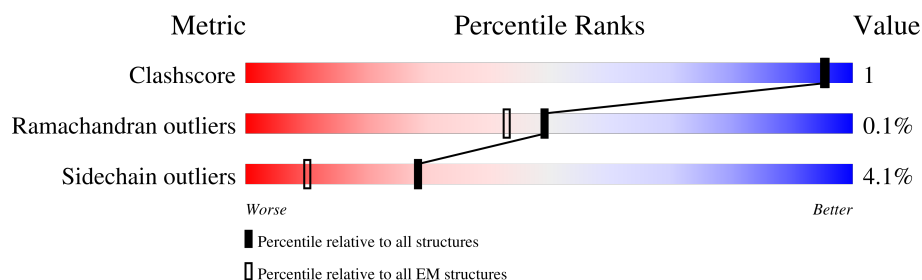
EMDB validation analysis : 0.0.1.dev132
MolProbity : 4-5-2 with Phenix2.0
Percentile statistics : 20250101.v01 (using entries in the PDB archive January 1st 2025)
EM percentile statistics : 202505.v01 (Using data in the EMD archive up until May 2025)
MapQ : 1.9.13
Ideal geometry (proteins) : Engh & Huber (2001)
Ideal geometry (DNA, RNA) : Parkinson et al. (1996)
Validation Pipeline (wwPDB-VP) : 2.49

1 Overall quality at a glance

The following experimental techniques were used to determine the structure:
ELECTRON MICROSCOPY





The reported resolution of this entry is 3.97 Å.

Percentile scores (ranging between 0-100) for global validation metrics of the entry are shown in the following graphic. The table shows the number of entries on which the scores are based.



Metric	Whole archive (#Entries)	EM structures (#Entries)	Similar EM resolution (#Entries, resolution range(Å))
Clashscore	229148	23984	-
Ramachandran outliers	224038	23583	-
Sidechain outliers	223484	23102	-
Q-score	-	25397	7578 (3.47 - 4.47)

The table below summarises the geometric issues observed across the polymeric chains and their fit to the map. The red, orange, yellow and green segments of the bar indicate the fraction of residues that contain outliers for ≥ 3 , 2, 1 and 0 types of geometric quality criteria respectively. A grey segment represents the fraction of residues that are not modelled. The numeric value for each fraction is indicated below the corresponding segment, with a dot representing fractions $\leq 5\%$. The upper red bar (where present) indicates the fraction of residues that have poor fit to the EM map (all-atom inclusion $< 40\%$). The numeric value is given above the bar.

Mol	Chain	Length	Quality of chain
1	A	500	
1	B	500	
1	C	500	
1	D	500	

Continued on next page...

Continued from previous page...

Mol	Chain	Length	Quality of chain
2	E1	27	
3	E2	25	
4	F1	25	
5	F2	27	
6	G1	24	
7	G2	22	
8	H1	22	
9	H2	24	

2 Entry composition

There are 10 unique types of molecules in this entry. The entry contains 19482 atoms, of which 0 are hydrogens and 0 are deuteriums.

In the tables below, the AltConf column contains the number of residues with at least one atom in alternate conformation and the Trace column contains the number of residues modelled with at most 2 atoms.

- Molecule 1 is a protein called Integrase.

Mol	Chain	Residues	Atoms					AltConf	Trace
1	A	486	Total	C	N	O	S	0	0
			3863	2419	718	711	15		
1	B	486	Total	C	N	O	S	1	0
			3871	2424	721	711	15		
1	C	486	Total	C	N	O	S	0	0
			3863	2419	718	711	15		
1	D	486	Total	C	N	O	S	0	0
			3863	2419	718	711	15		

- Molecule 2 is a DNA chain called attP-L.

Mol	Chain	Residues	Atoms					AltConf	Trace
2	E1	27	Total	C	N	O	P	0	0
			554	263	97	167	27		

- Molecule 3 is a DNA chain called attP-R.

Mol	Chain	Residues	Atoms					AltConf	Trace
3	E2	25	Total	C	N	O	P	0	0
			512	243	96	148	25		

- Molecule 4 is a DNA chain called attP-L.

Mol	Chain	Residues	Atoms					AltConf	Trace
4	F1	25	Total	C	N	O	P	0	0
			513	242	100	146	25		

- Molecule 5 is a DNA chain called attP-R.

Mol	Chain	Residues	Atoms					AltConf	Trace
5	F2	27	Total	C	N	O	P	0	0
			553	263	100	163	27		

- Molecule 6 is a DNA chain called attB-L.

Mol	Chain	Residues	Atoms					AltConf	Trace
6	G1	24	Total	C	N	O	P	0	0
			497	233	94	146	24		

- Molecule 7 is a DNA chain called attB-R.

Mol	Chain	Residues	Atoms					AltConf	Trace
7	G2	22	Total	C	N	O	P	0	0
			447	212	79	134	22		

- Molecule 8 is a DNA chain called attB-L.

Mol	Chain	Residues	Atoms					AltConf	Trace
8	H1	22	Total	C	N	O	P	0	0
			447	210	84	131	22		

- Molecule 9 is a DNA chain called attB-R.

Mol	Chain	Residues	Atoms					AltConf	Trace
9	H2	24	Total	C	N	O	P	0	0
			495	234	93	144	24		

There are 2 discrepancies between the modelled and reference sequences:

Chain	Residue	Modelled	Actual	Comment	Reference
H2	23	DT	DA	engineered mutation	GB LN831039.1
H2	24	DT	DC	engineered mutation	GB LN831039.1

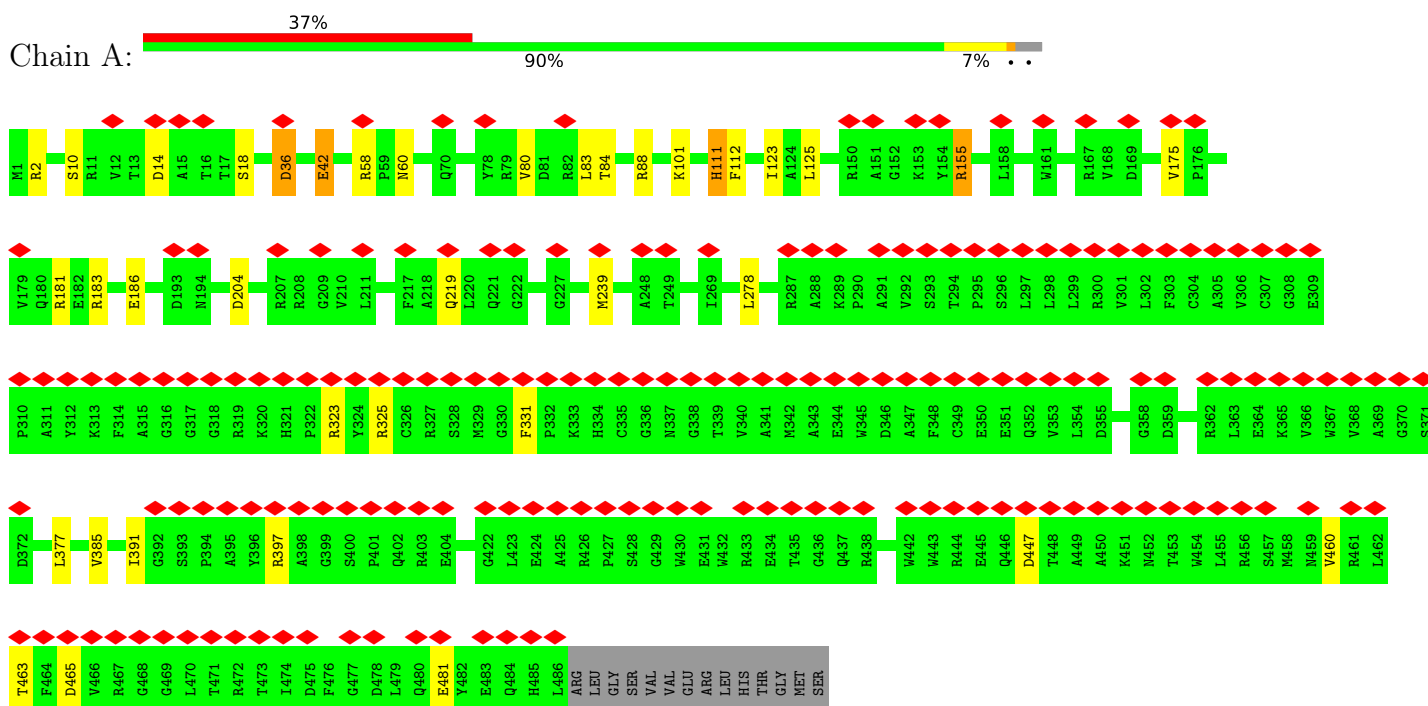
- Molecule 10 is ZINC ION (CCD ID: ZN) (formula: Zn) (labeled as "Ligand of Interest" by depositor).

Mol	Chain	Residues	Atoms		AltConf
10	A	1	Total	Zn	0
			1	1	
10	B	1	Total	Zn	0
			1	1	
10	C	1	Total	Zn	0
			1	1	
10	D	1	Total	Zn	0
			1	1	

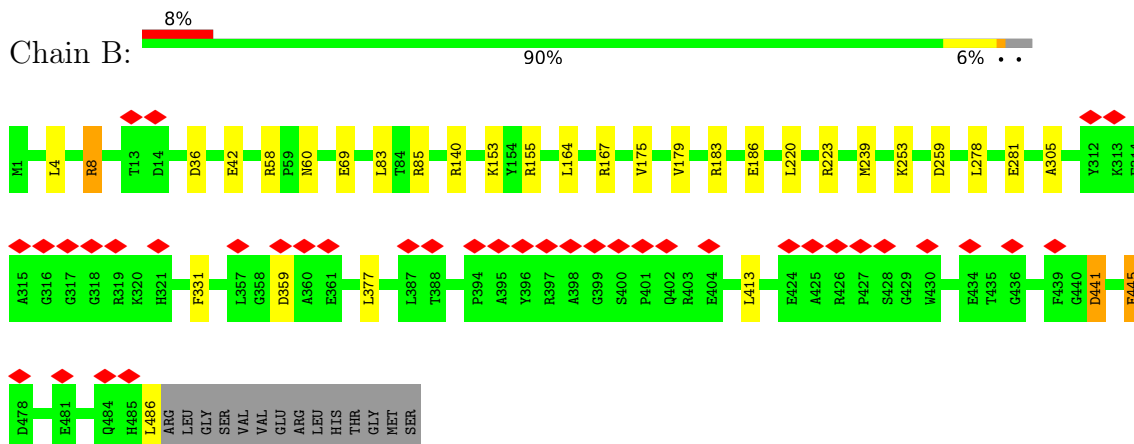
3 Residue-property plots

These plots are drawn for all protein, RNA, DNA and oligosaccharide chains in the entry. The first graphic for a chain summarises the proportions of the various outlier classes displayed in the second graphic. The second graphic shows the sequence view annotated by issues in geometry and atom inclusion in map density. Residues are color-coded according to the number of geometric quality criteria for which they contain at least one outlier: green = 0, yellow = 1, orange = 2 and red = 3 or more. A red diamond above a residue indicates a poor fit to the EM map for this residue (all-atom inclusion < 40%). Stretches of 2 or more consecutive residues without any outlier are shown as a green connector. Residues present in the sample, but not in the model, are shown in grey.

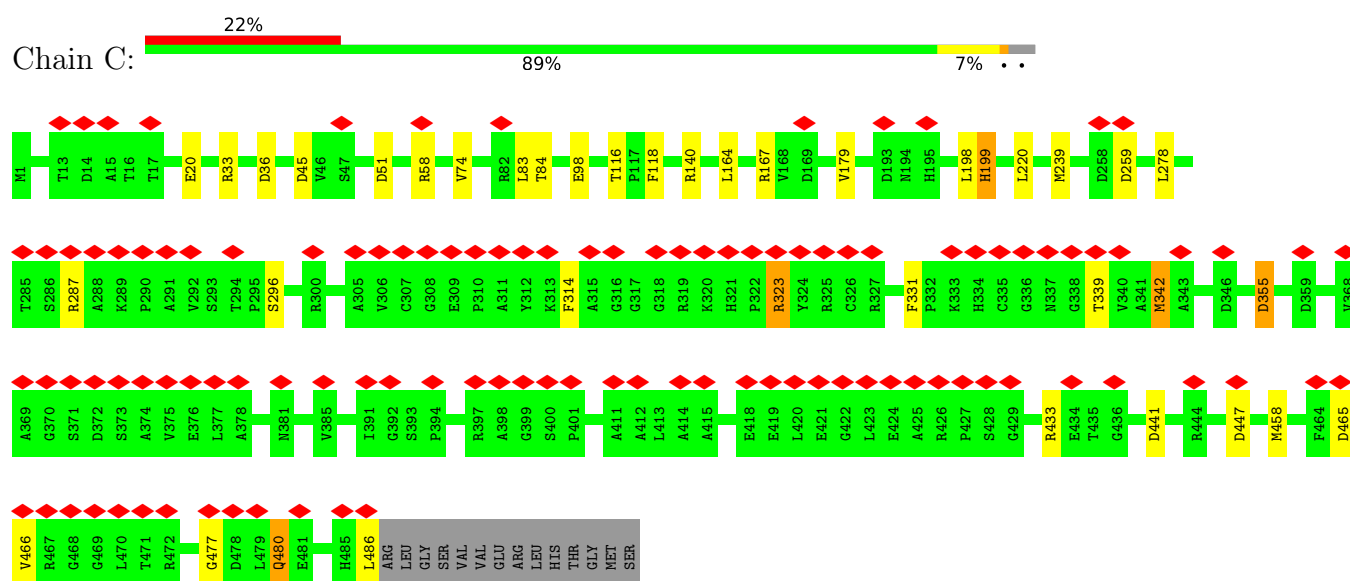
• Molecule 1: Integrase



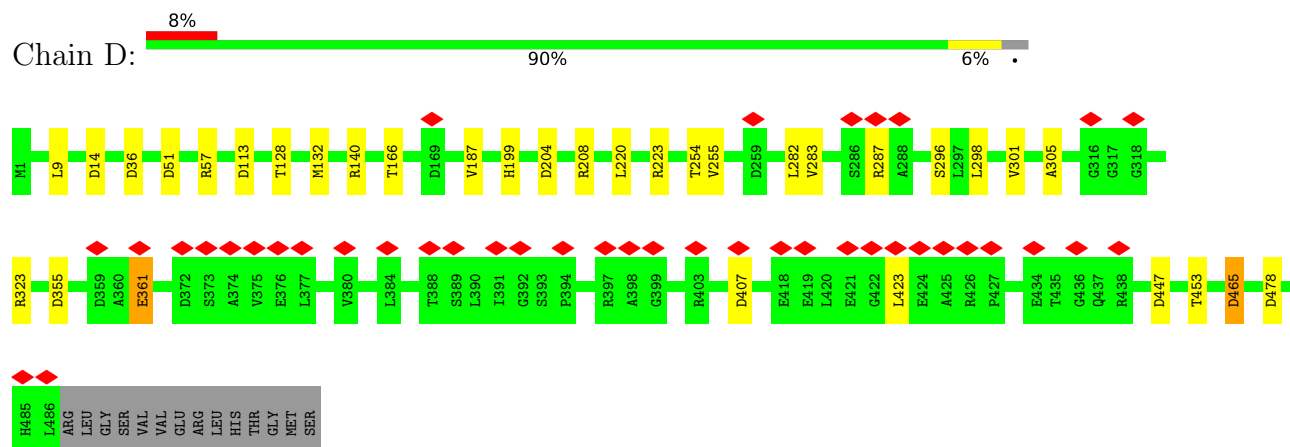
• Molecule 1: Integrase



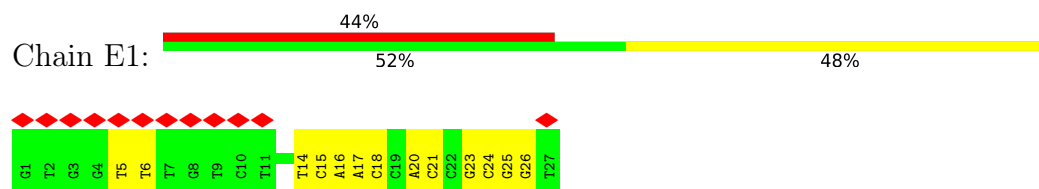
• Molecule 1: Integrase



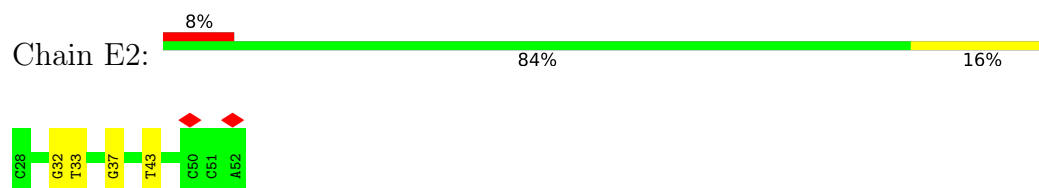
• Molecule 1: Integrase



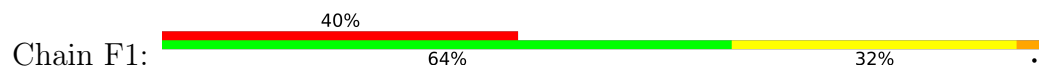
• Molecule 2: attP-L

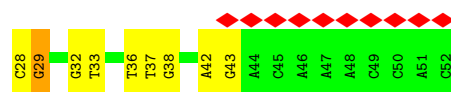


• Molecule 3: attP-R



• Molecule 4: attP-L

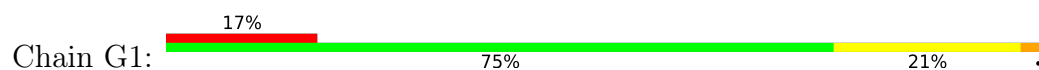




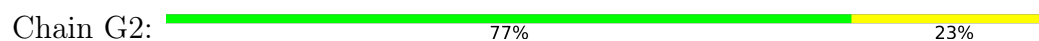
• Molecule 5: attP-R



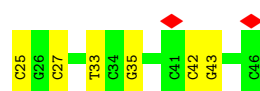
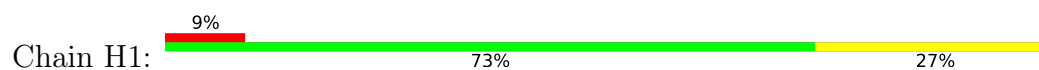
• Molecule 6: attB-L



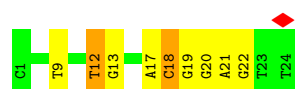
• Molecule 7: attB-R



• Molecule 8: attB-L



• Molecule 9: attB-R



4 Experimental information

Property	Value	Source
EM reconstruction method	SINGLE PARTICLE	Depositor
Imposed symmetry	POINT, C1	Depositor
Number of particles used	119042	Depositor
Resolution determination method	FSC 0.143 CUT-OFF	Depositor
CTF correction method	PHASE FLIPPING AND AMPLITUDE CORRECTION	Depositor
Microscope	TFS KRIOS	Depositor
Voltage (kV)	300	Depositor
Electron dose ($e^-/\text{\AA}^2$)	51	Depositor
Minimum defocus (nm)	800	Depositor
Maximum defocus (nm)	2000	Depositor
Magnification	Not provided	
Image detector	GATAN K3 BIOQUANTUM (6k x 4k)	Depositor
Maximum map value	2.022	Depositor
Minimum map value	-0.003	Depositor
Average map value	0.001	Depositor
Map value standard deviation	0.025	Depositor
Recommended contour level	0.02	Depositor
Map size (Å)	282.1992, 282.1992, 282.1992	wwPDB
Map dimensions	240, 240, 240	wwPDB
Map angles (°)	90.0, 90.0, 90.0	wwPDB
Pixel spacing (Å)	1.17583, 1.17583, 1.17583	Depositor

5 Model quality

5.1 Standard geometry

Bond lengths and bond angles in the following residue types are not validated in this section:
ZN

The Z score for a bond length (or angle) is the number of standard deviations the observed value is removed from the expected value. A bond length (or angle) with $|Z| > 5$ is considered an outlier worth inspection. RMSZ is the root-mean-square of all Z scores of the bond lengths (or angles).

Mol	Chain	Bond lengths		Bond angles	
		RMSZ	$\# Z > 5$	RMSZ	$\# Z > 5$
1	A	0.72	0/3947	1.36	11/5354 (0.2%)
1	B	0.71	0/3958	1.35	13/5368 (0.2%)
1	C	0.71	0/3947	1.39	16/5354 (0.3%)
1	D	0.70	0/3947	1.36	13/5354 (0.2%)
2	E1	0.43	0/619	1.25	7/954 (0.7%)
3	E2	0.41	0/574	1.21	5/883 (0.6%)
4	F1	0.41	0/576	1.24	4/886 (0.5%)
5	F2	0.43	0/619	1.19	5/953 (0.5%)
6	G1	0.42	0/557	1.24	3/859 (0.3%)
7	G2	0.44	0/499	1.31	5/767 (0.7%)
8	H1	0.40	0/500	1.22	5/768 (0.7%)
9	H2	0.44	0/555	1.26	4/855 (0.5%)
All	All	0.65	0/20298	1.33	91/28355 (0.3%)

Chiral center outliers are detected by calculating the chiral volume of a chiral center and verifying if the center is modelled as a planar moiety or with the opposite hand. A planarity outlier is detected by checking planarity of atoms in a peptide group, atoms in a mainchain group or atoms of a sidechain that are expected to be planar.

Mol	Chain	#Chirality outliers	#Planarity outliers
1	D	0	1

There are no bond length outliers.

All (91) bond angle outliers are listed below:

Mol	Chain	Res	Type	Atoms	Z	Observed(°)	Ideal(°)
4	F1	32	DG	O3'-P-O5'	-11.62	86.56	104.00
3	E2	32	DG	O3'-P-O5'	-10.05	88.92	104.00
2	E1	20	DA	O3'-P-O5'	-9.77	89.34	104.00
8	H1	25	DC	O3'-P-O5'	-9.73	89.41	104.00

Continued on next page...

Continued from previous page...

Mol	Chain	Res	Type	Atoms	Z	Observed(°)	Ideal(°)
5	F2	20	DA	O3'-P-O5'	-9.67	89.49	104.00
1	C	355	ASP	CA-CB-CG	8.16	120.76	112.60
1	D	255	VAL	N-CA-CB	7.90	119.80	110.95
5	F2	25	DG	O3'-P-O5'	-7.74	92.39	104.00
9	H2	17	DA	O3'-P-O5'	-7.71	92.44	104.00
6	G1	17	DA	O3'-P-O5'	-7.67	92.49	104.00
6	G1	18	DC	O3'-P-O5'	-7.64	92.54	104.00
9	H2	18	DC	O3'-P-O5'	-7.59	92.61	104.00
1	C	118	PHE	CA-CB-CG	7.46	121.27	113.80
1	B	8	ARG	CD-NE-CZ	7.46	134.84	124.40
2	E1	21	DC	O3'-P-O5'	-7.42	92.87	104.00
1	D	407	ASP	CA-CB-CG	7.41	120.01	112.60
1	D	113	ASP	CA-CB-CG	7.37	119.97	112.60
1	D	199	HIS	CA-CB-CG	6.94	120.74	113.80
2	E1	26	DG	O3'-P-O5'	-6.92	93.62	104.00
4	F1	33	DT	C2'-C3'-O3'	-6.92	101.12	111.50
6	G1	10	DG	O3'-P-O5'	-6.86	93.71	104.00
7	G2	33	DT	O3'-P-O5'	-6.86	93.72	104.00
1	B	359	ASP	CA-CB-CG	6.67	119.27	112.60
1	A	204	ASP	CA-CB-CG	6.57	119.17	112.60
7	G2	35	DA	O3'-P-O5'	-6.56	94.17	104.00
1	A	460	VAL	N-CA-CB	6.55	117.67	110.53
1	B	445	GLU	CB-CG-CD	6.54	123.72	112.60
1	B	465	ASP	CA-CB-CG	6.47	119.07	112.60
4	F1	29	DG	O3'-P-O5'	-6.44	94.34	104.00
3	E2	33	DT	C2'-C3'-O3'	-6.39	101.91	111.50
4	F1	36	DT	O3'-P-O5'	-6.30	94.55	104.00
8	H1	33	DT	O3'-P-O5'	-6.22	94.67	104.00
1	D	283	VAL	N-CA-CB	6.13	117.21	110.53
1	A	465	ASP	CA-CB-CG	6.12	118.72	112.60
7	G2	34	DC	O3'-P-O5'	-6.11	94.83	104.00
1	D	465	ASP	CA-CB-CG	6.06	118.66	112.60
1	B	441	ASP	CA-CB-CG	6.01	118.61	112.60
2	E1	23	DG	O3'-P-O5'	-5.90	95.15	104.00
1	C	199	HIS	CB-CA-C	5.87	120.53	110.79
1	C	465	ASP	CA-CB-CG	5.87	118.47	112.60
1	A	447	ASP	CA-CB-CG	5.86	118.46	112.60
1	B	447	ASP	CA-CB-CG	5.81	118.41	112.60
1	A	111	HIS	CA-CB-CG	5.76	119.56	113.80
1	A	323	ARG	CD-NE-CZ	5.71	132.39	124.40
1	D	478	ASP	CA-CB-CG	5.70	118.30	112.60
1	C	179	VAL	N-CA-CB	5.70	117.86	110.57

Continued on next page...

Continued from previous page...

Mol	Chain	Res	Type	Atoms	Z	Observed(°)	Ideal(°)
1	B	259	ASP	CA-CB-CG	5.69	118.29	112.60
1	D	36	ASP	CA-CB-CG	5.63	118.23	112.60
1	C	51	ASP	CA-CB-CG	5.61	118.21	112.60
1	B	36	ASP	CA-CB-CG	5.60	118.20	112.60
1	D	447	ASP	CA-CB-CG	5.58	118.18	112.60
1	C	447	ASP	CA-CB-CG	5.58	118.18	112.60
1	C	331	PHE	CB-CA-C	5.57	117.50	109.09
1	A	377	LEU	N-CA-CB	5.56	118.38	110.16
7	G2	29	DG	C4'-C3'-O3'	-5.54	101.70	110.00
1	A	36	ASP	CA-CB-CG	5.50	118.09	112.60
1	B	167	ARG	CD-NE-CZ	5.46	132.05	124.40
9	H2	12	DT	C2'-C3'-O3'	-5.45	103.32	111.50
8	H1	35	DG	O3'-P-O5'	-5.43	95.85	104.00
3	E2	43	DT	O3'-P-O5'	-5.43	95.86	104.00
1	B	179	VAL	N-CA-CB	5.42	117.51	110.57
5	F2	17	DA	O3'-P-O5'	-5.39	95.91	104.00
1	C	36	ASP	CA-CB-CG	5.39	117.99	112.60
9	H2	9	DT	O3'-P-O5'	-5.39	95.92	104.00
1	C	259	ASP	CA-CB-CG	5.38	117.98	112.60
1	A	331	PHE	CA-CB-CG	5.37	119.17	113.80
1	C	323	ARG	CD-NE-CZ	5.33	131.86	124.40
1	C	167	ARG	CD-NE-CZ	5.31	131.84	124.40
1	C	441	ASP	CA-CB-CG	5.30	117.90	112.60
1	C	342	MET	CG-SD-CE	5.27	112.49	100.90
2	E1	18	DC	O3'-P-O5'	-5.24	96.14	104.00
1	A	181	ARG	CD-NE-CZ	5.22	131.71	124.40
1	D	51	ASP	CA-CB-CG	5.21	117.81	112.60
1	B	8	ARG	CG-CD-NE	5.21	123.45	112.00
2	E1	14	DT	O3'-P-O5'	-5.19	96.22	104.00
2	E1	17	DA	O3'-P-O5'	-5.18	96.23	104.00
8	H1	27	DC	O3'-P-O5'	-5.18	96.23	104.00
5	F2	15	DA	O3'-P-O5'	-5.17	96.25	104.00
8	H1	25	DC	C4'-C3'-O3'	5.16	117.74	110.00
1	B	85	ARG	CD-NE-CZ	5.15	131.61	124.40
1	D	361	GLU	CB-CA-C	5.12	118.41	109.65
3	E2	37	DG	O3'-P-O5'	-5.12	96.32	104.00
1	D	323	ARG	CD-NE-CZ	5.10	131.54	124.40
1	D	355	ASP	CA-CB-CG	5.09	117.69	112.60
5	F2	18	DC	O3'-P-O5'	-5.07	96.39	104.00
1	A	155	ARG	NE-CZ-NH2	5.06	123.75	119.20
1	B	331	PHE	CA-CB-CG	5.05	118.85	113.80
3	E2	32	DG	C4'-C3'-O3'	-5.04	102.43	110.00

Continued on next page...

Continued from previous page...

Mol	Chain	Res	Type	Atoms	Z	Observed(°)	Ideal(°)
1	C	480	GLN	N-CA-CB	5.04	117.53	110.12
1	C	45	ASP	CA-CB-CG	5.03	117.63	112.60
7	G2	26	DT	O3'-P-O5'	-5.02	96.47	104.00

There are no chirality outliers.

All (1) planarity outliers are listed below:

Mol	Chain	Res	Type	Group
1	D	423	LEU	Peptide

5.2 Too-close contacts

In the following table, the Non-H and H(model) columns list the number of non-hydrogen atoms and hydrogen atoms in the chain respectively. The H(added) column lists the number of hydrogen atoms added and optimized by MolProbity. The Clashes column lists the number of clashes within the asymmetric unit, whereas Symm-Clashes lists symmetry-related clashes.

Mol	Chain	Non-H	H(model)	H(added)	Clashes	Symm-Clashes
1	A	3863	0	3813	6	0
1	B	3871	0	3826	7	0
1	C	3863	0	3813	5	0
1	D	3863	0	3813	5	0
2	E1	554	0	306	4	0
3	E2	512	0	281	0	0
4	F1	513	0	279	3	0
5	F2	553	0	305	4	0
6	G1	497	0	269	3	0
7	G2	447	0	248	0	0
8	H1	447	0	245	1	0
9	H2	495	0	270	4	0
10	A	1	0	0	0	0
10	B	1	0	0	0	0
10	C	1	0	0	0	0
10	D	1	0	0	0	0
All	All	19482	0	17468	38	0

The all-atom clashscore is defined as the number of clashes found per 1000 atoms (including hydrogen atoms). The all-atom clashscore for this structure is 1.

All (38) close contacts within the same asymmetric unit are listed below, sorted by their clash magnitude.

Atom-1	Atom-2	Interatomic distance (Å)	Clash overlap (Å)
6:G1:18:DC:H2''	6:G1:19:DG:C8	2.26	0.71
4:F1:28:DC:H2'	4:F1:29:DG:C8	2.28	0.68
9:H2:18:DC:H2''	9:H2:19:DG:C8	2.27	0.68
1:B:58:ARG:NH1	1:B:83:LEU:O	2.28	0.65
1:C:58:ARG:NH1	1:C:83:LEU:O	2.32	0.62
1:A:58:ARG:NH1	1:A:83:LEU:O	2.31	0.62
5:F2:21:DC:H2''	5:F2:22:DT:C6	2.42	0.54
1:A:42:GLU:O	1:A:60:ASN:ND2	2.42	0.53
1:B:42:GLU:O	1:B:60:ASN:ND2	2.43	0.52
1:B:223:ARG:NH1	5:F2:23:DG:OP1	2.43	0.52
1:B:305:ALA:HB3	1:B:465:ASP:HB2	1.92	0.52
4:F1:37:DT:H2''	4:F1:38:DG:C8	2.45	0.51
2:E1:24:DC:H2''	2:E1:25:DG:C8	2.45	0.51
1:D:204:ASP:OD2	1:D:208:ARG:NH1	2.45	0.50
1:D:305:ALA:HB3	1:D:465:ASP:HB2	1.94	0.50
9:H2:21:DA:H2''	9:H2:22:DG:C8	2.46	0.49
5:F2:16:DC:H2''	5:F2:17:DA:C8	2.48	0.49
1:A:183:ARG:NH1	1:A:186:GLU:OE1	2.46	0.49
1:B:140:ARG:HD3	5:F2:26:DA:H4'	1.96	0.48
1:D:223:ARG:NH1	9:H2:20:DG:OP1	2.48	0.47
1:B:239:MET:HB3	1:B:278:LEU:HD21	1.97	0.47
1:D:298:LEU:HA	1:D:301:VAL:HG22	1.96	0.47
1:C:477:GLY:O	1:C:480:GLN:HG3	2.15	0.47
2:E1:15:DC:H2''	2:E1:16:DA:C8	2.50	0.47
1:C:323:ARG:NH1	1:C:339:THR:OG1	2.48	0.46
9:H2:12:DT:H2''	9:H2:13:DG:C8	2.50	0.46
1:A:80:VAL:HG21	1:A:112:PHE:CD2	2.51	0.46
8:H1:42:DC:H2''	8:H1:43:DG:C8	2.50	0.46
2:E1:24:DC:C2'	2:E1:25:DG:C8	2.99	0.45
6:G1:12:DC:H2''	6:G1:13:DG:C8	2.52	0.45
1:C:239:MET:HB3	1:C:278:LEU:HD21	2.00	0.43
1:C:287:ARG:NE	6:G1:12:DC:OP1	2.52	0.43
1:D:128:THR:O	1:D:132:MET:HG2	2.20	0.42
4:F1:42:DA:H2''	4:F1:43:DG:C8	2.55	0.41
1:A:112:PHE:CE2	1:A:123:ILE:HG12	2.56	0.41
1:B:183:ARG:NH2	1:B:186:GLU:OE1	2.54	0.41
2:E1:5:DT:C6	2:E1:6:DT:H72	2.56	0.40
1:A:239:MET:HB3	1:A:278:LEU:HD21	2.03	0.40

There are no symmetry-related clashes.

5.3 Torsion angles [i](#)

5.3.1 Protein backbone [i](#)

In the following table, the Percentiles column shows the percent Ramachandran outliers of the chain as a percentile score with respect to all PDB entries followed by that with respect to all EM entries.

The Analysed column shows the number of residues for which the backbone conformation was analysed, and the total number of residues.

Mol	Chain	Analysed	Favoured	Allowed	Outliers	Percentiles	
1	A	484/500 (97%)	475 (98%)	7 (1%)	2 (0%)	30	65
1	B	485/500 (97%)	478 (99%)	7 (1%)	0	100	100
1	C	484/500 (97%)	471 (97%)	13 (3%)	0	100	100
1	D	484/500 (97%)	473 (98%)	11 (2%)	0	100	100
All	All	1937/2000 (97%)	1897 (98%)	38 (2%)	2 (0%)	49	80

All (2) Ramachandran outliers are listed below:

Mol	Chain	Res	Type
1	A	2	ARG
1	A	14	ASP

5.3.2 Protein sidechains [i](#)

In the following table, the Percentiles column shows the percent sidechain outliers of the chain as a percentile score with respect to all PDB entries followed by that with respect to all EM entries.

The Analysed column shows the number of residues for which the sidechain conformation was analysed, and the total number of residues.

Mol	Chain	Analysed	Rotameric	Outliers	Percentiles	
1	A	401/413 (97%)	383 (96%)	18 (4%)	24	47
1	B	402/413 (97%)	386 (96%)	16 (4%)	28	50
1	C	401/413 (97%)	382 (95%)	19 (5%)	23	46
1	D	401/413 (97%)	388 (97%)	13 (3%)	34	56
All	All	1605/1652 (97%)	1539 (96%)	66 (4%)	28	49

All (66) residues with a non-rotameric sidechain are listed below:

Mol	Chain	Res	Type
1	A	10	SER
1	A	18	SER
1	A	36	ASP
1	A	42	GLU
1	A	84	THR
1	A	88	ARG
1	A	101	LYS
1	A	111	HIS
1	A	125	LEU
1	A	155	ARG
1	A	175	VAL
1	A	219	GLN
1	A	325	ARG
1	A	385	VAL
1	A	391	ILE
1	A	397	ARG
1	A	463	THR
1	A	481	GLU
1	B	4	LEU
1	B	8	ARG
1	B	69	GLU
1	B	153	LYS
1	B	155	ARG
1	B	164	LEU
1	B	175	VAL
1	B	220	LEU
1	B	253	LYS
1	B	281	GLU
1	B	377	LEU
1	B	413	LEU
1	B	441	ASP
1	B	445	GLU
1	B	466	VAL
1	B	486	LEU
1	C	20	GLU
1	C	33	ARG
1	C	74	VAL
1	C	84	THR
1	C	98	GLU
1	C	116	THR
1	C	140	ARG
1	C	164	LEU
1	C	198	LEU

Continued on next page...

Continued from previous page...

Mol	Chain	Res	Type
1	C	199	HIS
1	C	220	LEU
1	C	296	SER
1	C	314	PHE
1	C	342	MET
1	C	355	ASP
1	C	433	ARG
1	C	458	MET
1	C	466	VAL
1	C	486	LEU
1	D	9	LEU
1	D	14	ASP
1	D	57	ARG
1	D	140	ARG
1	D	166	THR
1	D	187	VAL
1	D	220	LEU
1	D	254	THR
1	D	282	LEU
1	D	287	ARG
1	D	296	SER
1	D	361	GLU
1	D	453	THR

Sometimes sidechains can be flipped to improve hydrogen bonding and reduce clashes. All (13) such sidechains are listed below:

Mol	Chain	Res	Type
1	A	28	GLN
1	A	452	ASN
1	A	480	GLN
1	B	27	GLN
1	C	27	GLN
1	C	148	ASN
1	C	203	HIS
1	C	417	GLN
1	C	437	GLN
1	C	484	GLN
1	D	417	GLN
1	D	437	GLN
1	D	446	GLN

5.3.3 RNA [i](#)

There are no RNA molecules in this entry.

5.4 Non-standard residues in protein, DNA, RNA chains [i](#)

There are no non-standard protein/DNA/RNA residues in this entry.

5.5 Carbohydrates [i](#)

There are no oligosaccharides in this entry.

5.6 Ligand geometry [i](#)

Of 4 ligands modelled in this entry, 4 are monoatomic - leaving 0 for Mogul analysis.

There are no bond length outliers.

There are no bond angle outliers.

There are no chirality outliers.

There are no torsion outliers.

There are no ring outliers.

No monomer is involved in short contacts.

5.7 Other polymers [i](#)

There are no such residues in this entry.

5.8 Polymer linkage issues [i](#)

There are no chain breaks in this entry.

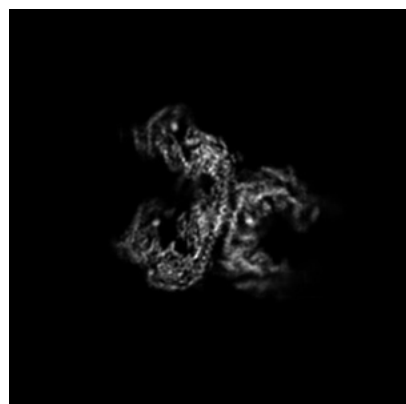
6 Map visualisation [i](#)

This section contains visualisations of the EMDB entry EMD-60888. These allow visual inspection of the internal detail of the map and identification of artifacts.

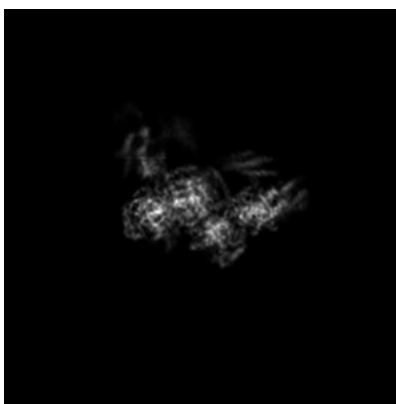
Images derived from a raw map, generated by summing the deposited half-maps, are presented below the corresponding image components of the primary map to allow further visual inspection and comparison with those of the primary map.

6.1 Orthogonal projections [i](#)

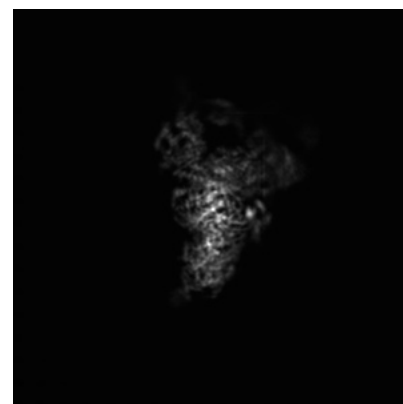
6.1.1 Primary map



X

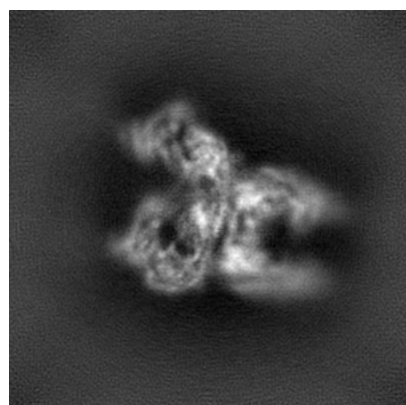


Y

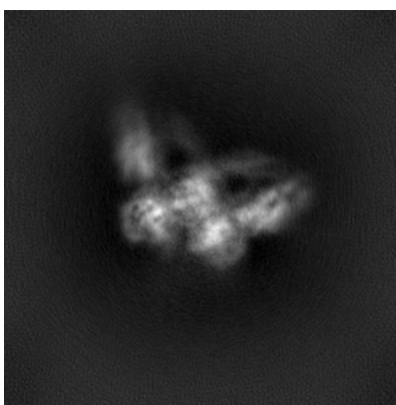


Z

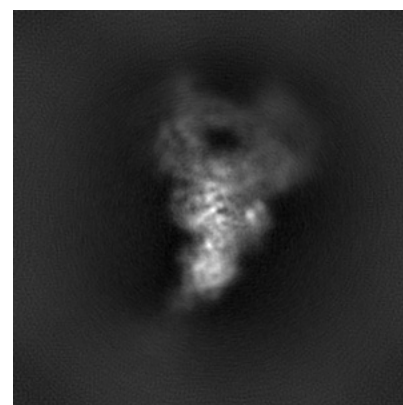
6.1.2 Raw map



X



Y



Z

The images above show the map projected in three orthogonal directions.

6.2 Central slices [i](#)

6.2.1 Primary map



X Index: 120

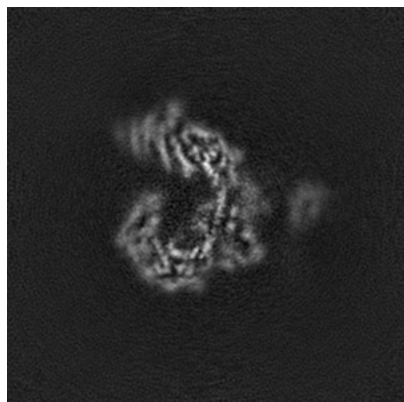


Y Index: 120

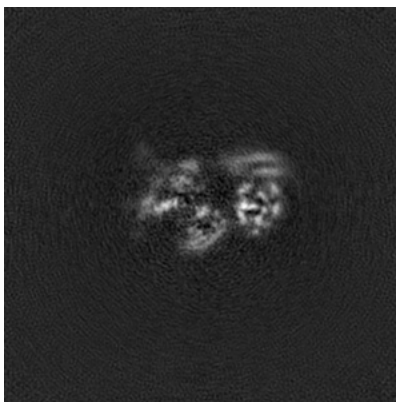


Z Index: 120

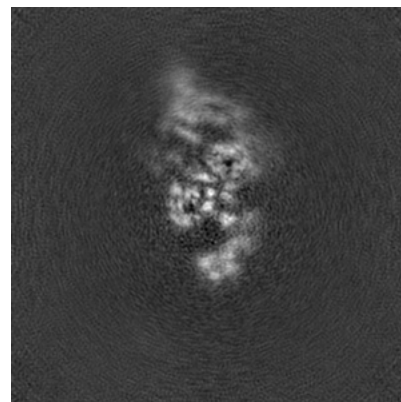
6.2.2 Raw map



X Index: 120



Y Index: 120

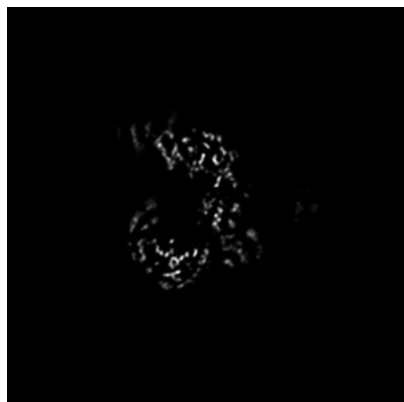


Z Index: 120

The images above show central slices of the map in three orthogonal directions.

6.3 Largest variance slices [i](#)

6.3.1 Primary map



X Index: 117

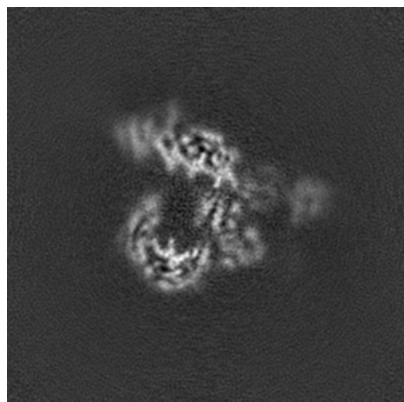


Y Index: 116

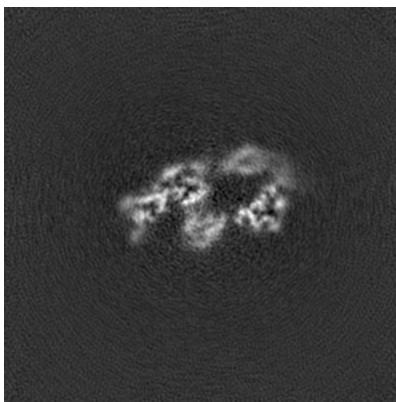


Z Index: 112

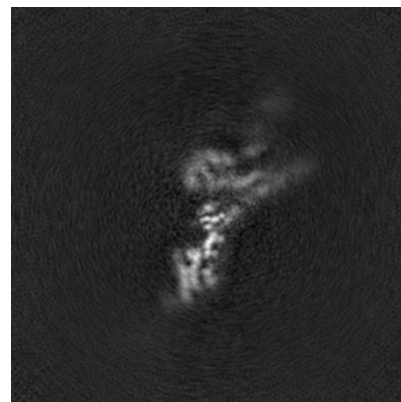
6.3.2 Raw map



X Index: 117



Y Index: 114

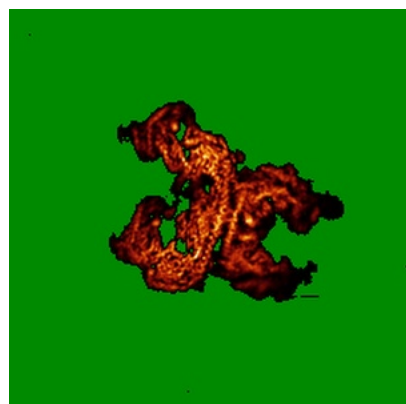


Z Index: 92

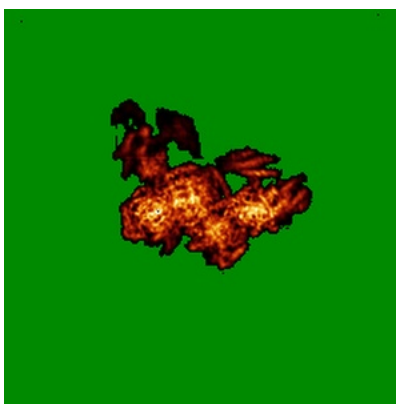
The images above show the largest variance slices of the map in three orthogonal directions.

6.4 Orthogonal standard-deviation projections (False-color) [i](#)

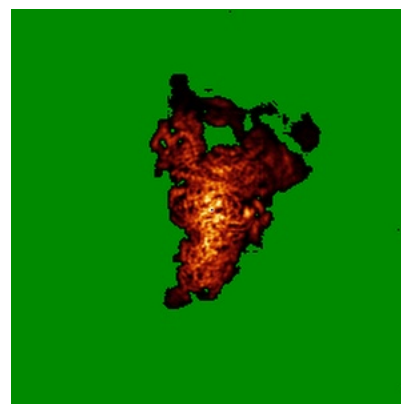
6.4.1 Primary map



X

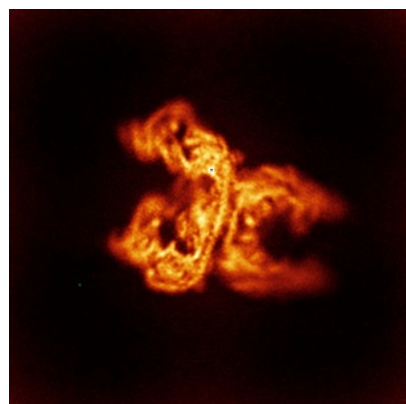


Y

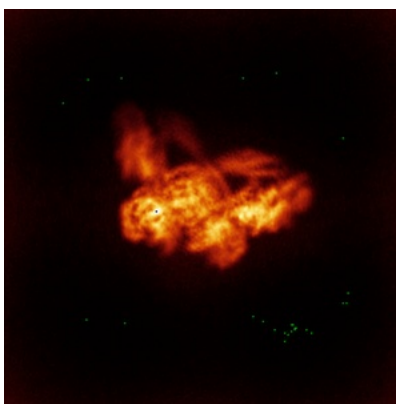


Z

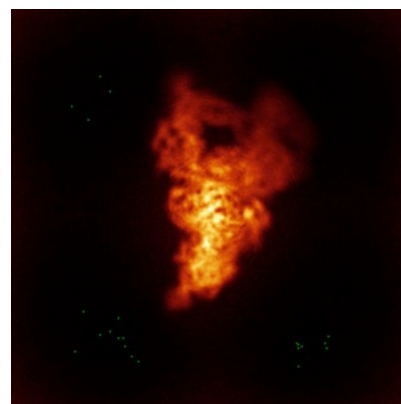
6.4.2 Raw map



X



Y



Z

The images above show the map standard deviation projections with false color in three orthogonal directions. Minimum values are shown in green, max in blue, and dark to light orange shades represent small to large values respectively.

6.5 Orthogonal surface views [i](#)

6.5.1 Primary map



X



Y



Z

The images above show the 3D surface view of the map at the recommended contour level 0.02. These images, in conjunction with the slice images, may facilitate assessment of whether an appropriate contour level has been provided.

6.5.2 Raw map



X



Y



Z

These images show the 3D surface of the raw map. The raw map's contour level was selected so that its surface encloses the same volume as the primary map does at its recommended contour level.

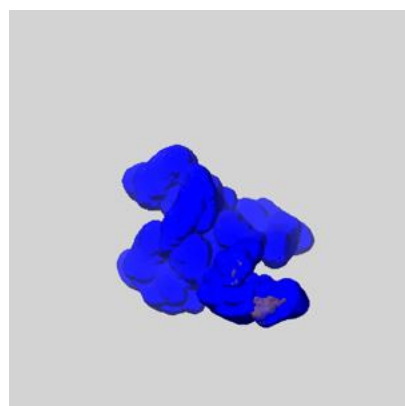
6.6 Mask visualisation [i](#)

This section shows the 3D surface view of the primary map at 50% transparency overlaid with the specified mask at 0% transparency

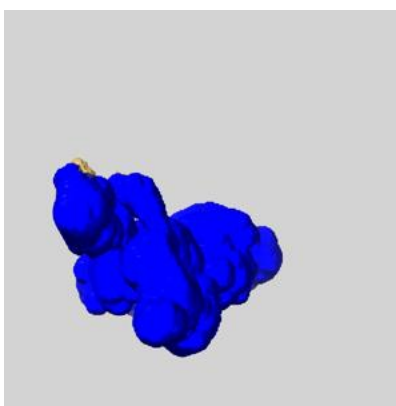
A mask typically either:

- Encompasses the whole structure
- Separates out a domain, a functional unit, a monomer or an area of interest from a larger structure

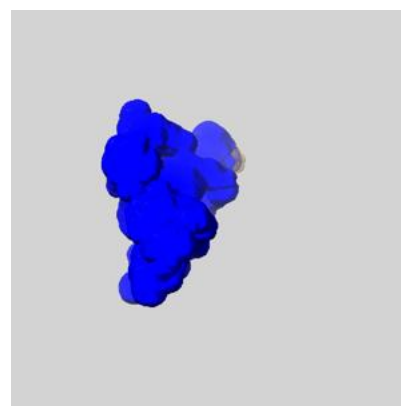
6.6.1 emd_60888_msk_1.map [i](#)



X



Y

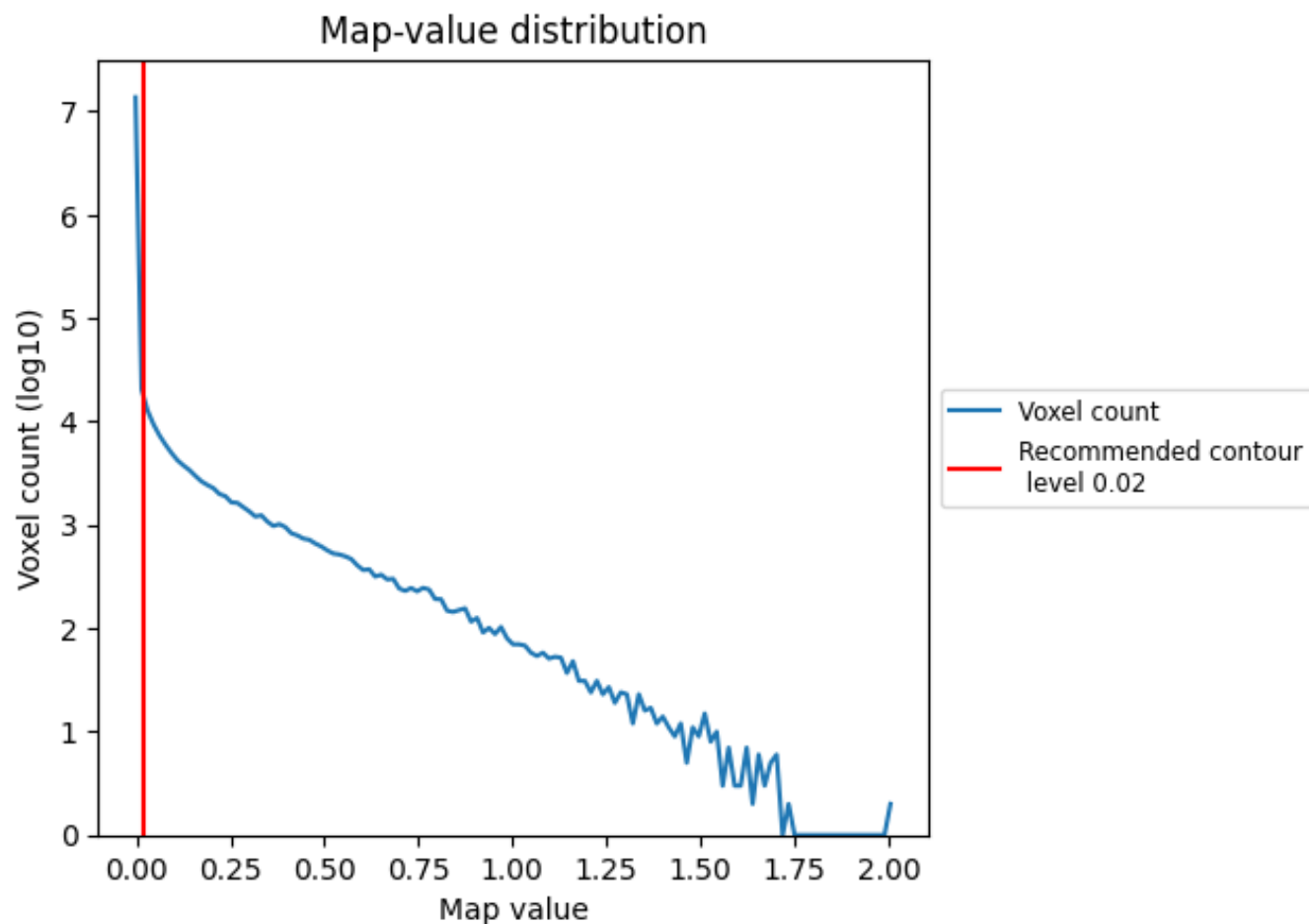


Z

7 Map analysis [i](#)

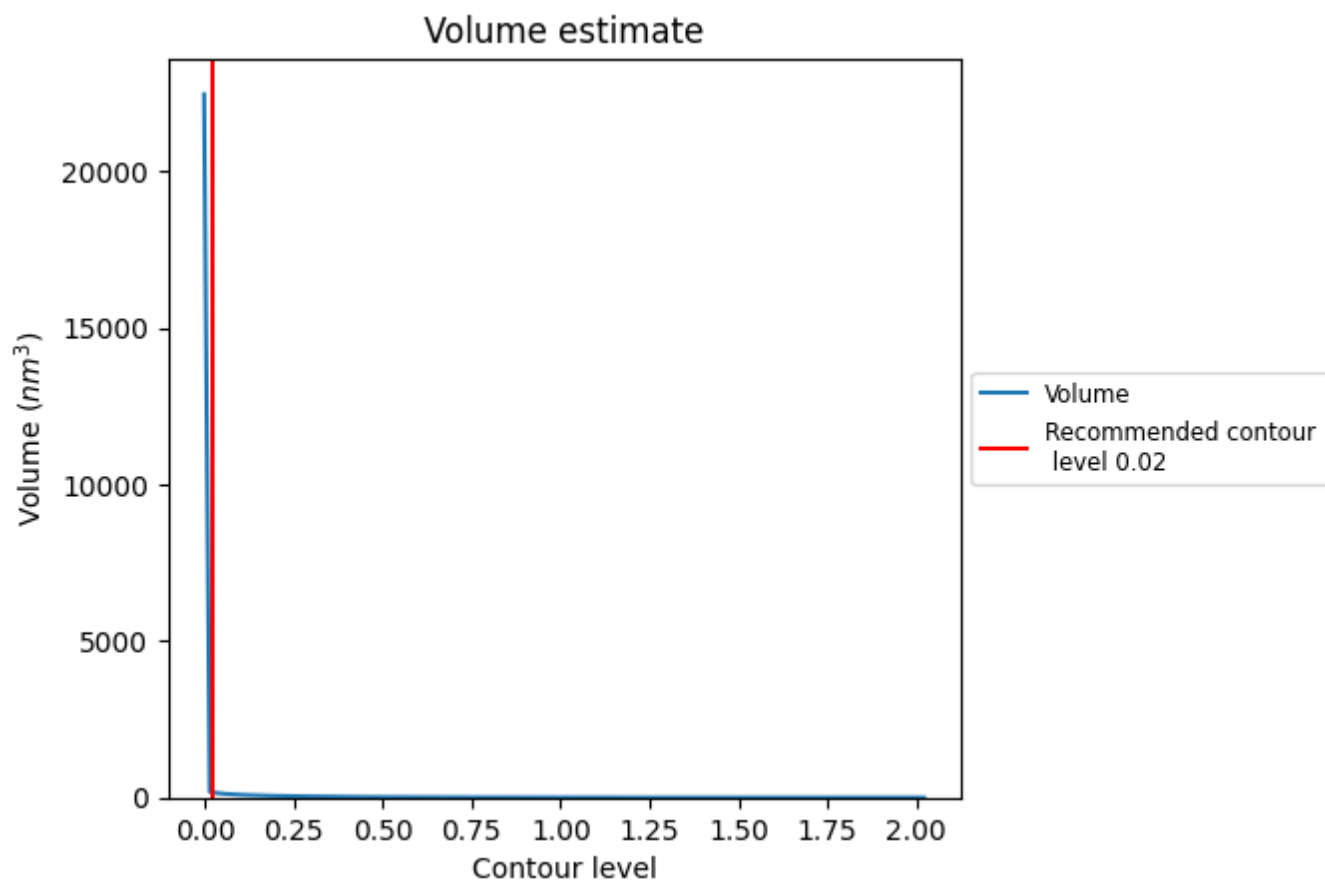
This section contains the results of statistical analysis of the map.

7.1 Map-value distribution [i](#)



The map-value distribution is plotted in 128 intervals along the x-axis. The y-axis is logarithmic. A spike in this graph at zero usually indicates that the volume has been masked.

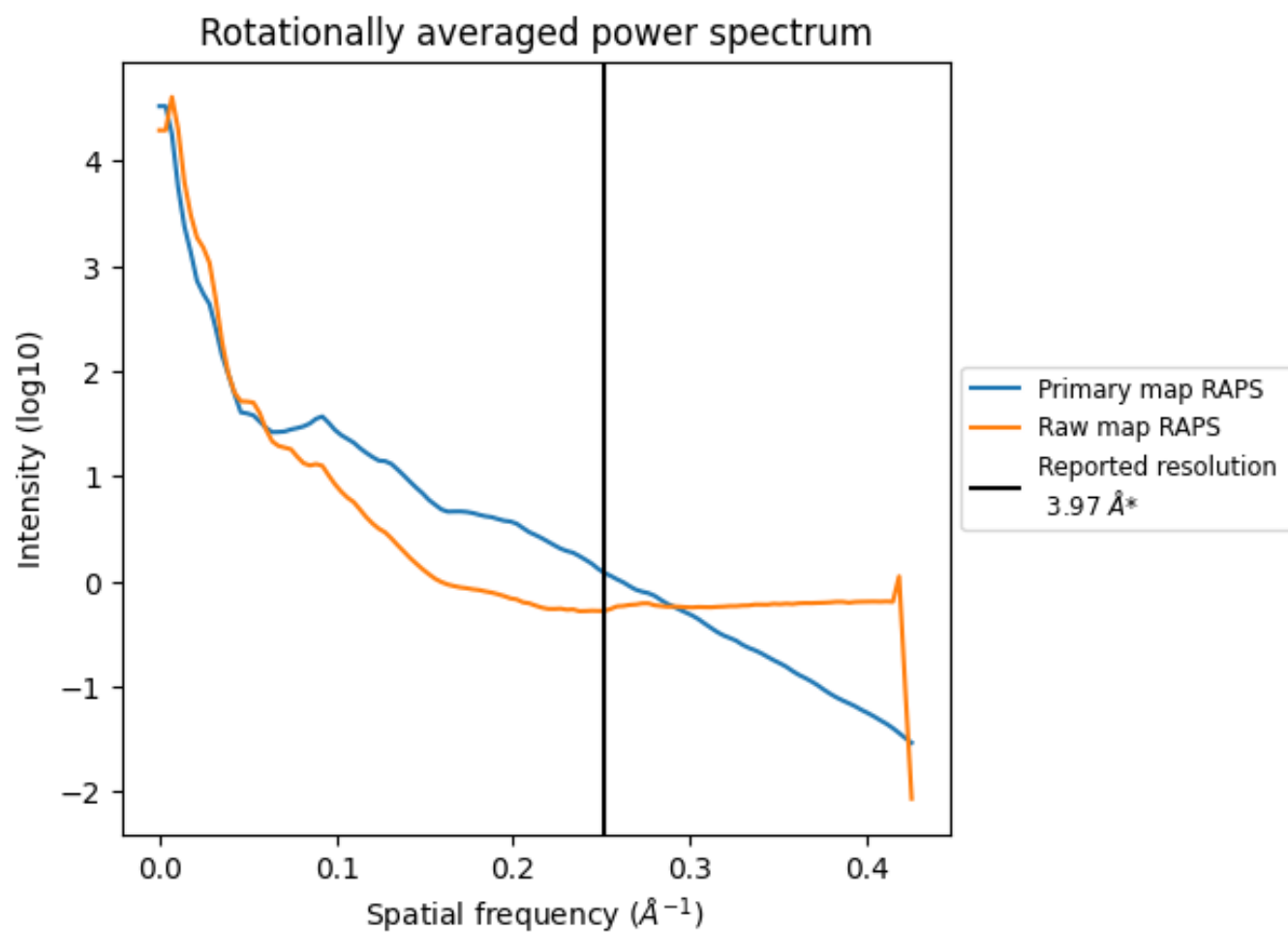
7.2 Volume estimate [i](#)



The volume at the recommended contour level is 169 nm^3 ; this corresponds to an approximate mass of 153 kDa.

The volume estimate graph shows how the enclosed volume varies with the contour level. The recommended contour level is shown as a vertical line and the intersection between the line and the curve gives the volume of the enclosed surface at the given level.

7.3 Rotationally averaged power spectrum ⓘ

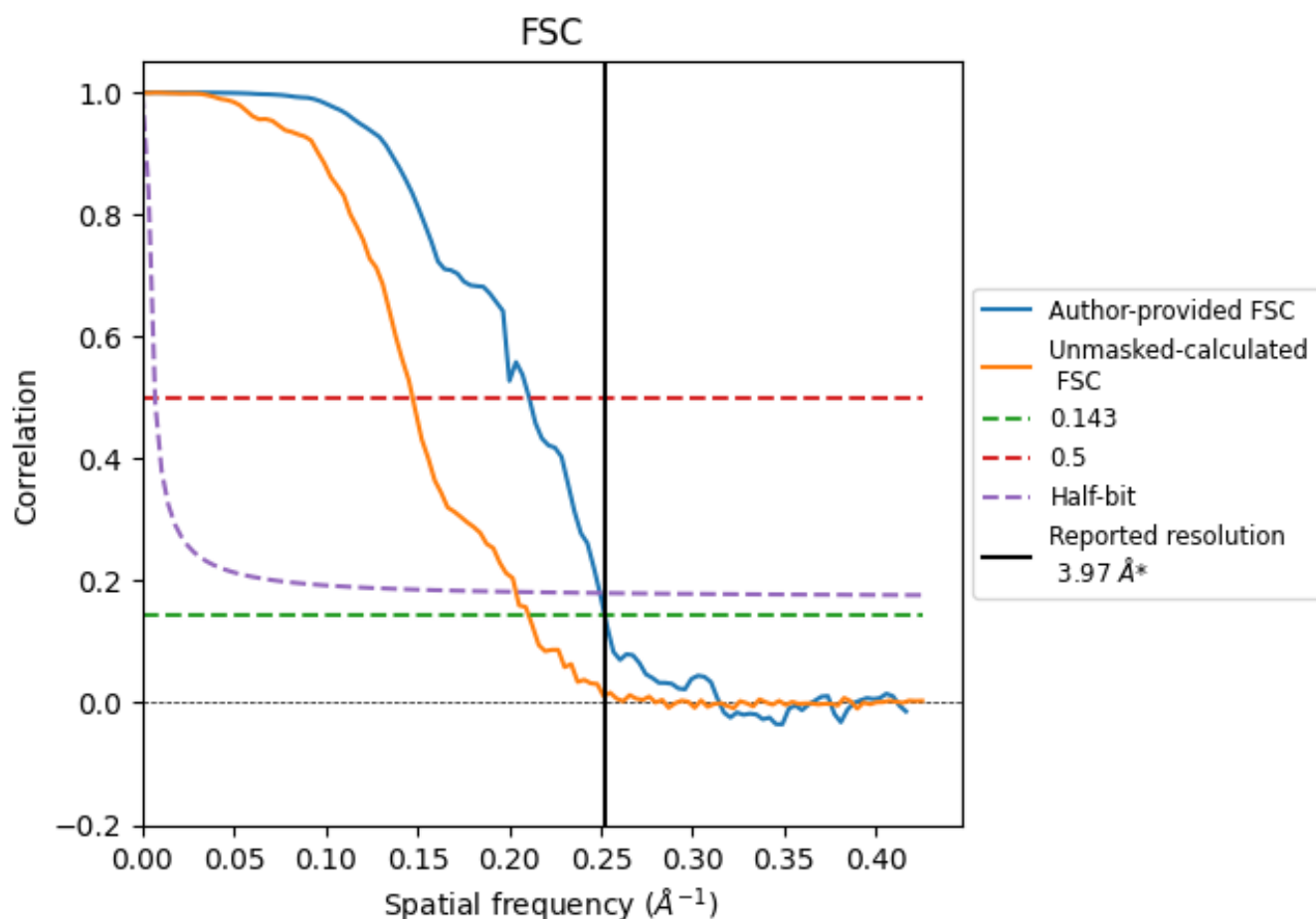


*Reported resolution corresponds to spatial frequency of 0.252 Å⁻¹

8 Fourier-Shell correlation [i](#)

Fourier-Shell Correlation (FSC) is the most commonly used method to estimate the resolution of single-particle and subtomogram-averaged maps. The shape of the curve depends on the imposed symmetry, mask and whether or not the two 3D reconstructions used were processed from a common reference. The reported resolution is shown as a black line. A curve is displayed for the half-bit criterion in addition to lines showing the 0.143 gold standard cut-off and 0.5 cut-off.

8.1 FSC [i](#)



*Reported resolution corresponds to spatial frequency of 0.252 \AA^{-1}

8.2 Resolution estimates [i](#)

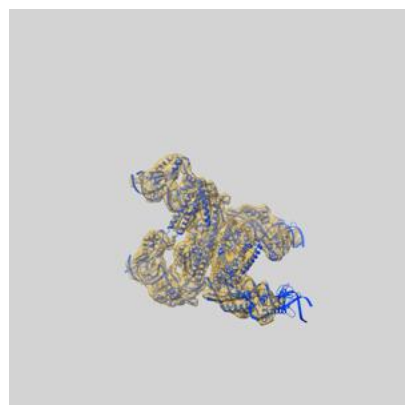
Resolution estimate (Å)	Estimation criterion (FSC cut-off)		
	0.143	0.5	Half-bit
Reported by author	3.97	-	-
Author-provided FSC curve	3.97	4.74	4.01
Unmasked-calculated*	4.75	6.78	4.91

*Resolution estimate based on FSC curve calculated by comparison of deposited half-maps. The value from deposited half-maps intersecting FSC 0.143 CUT-OFF 4.75 differs from the reported value 3.97 by more than 10 %

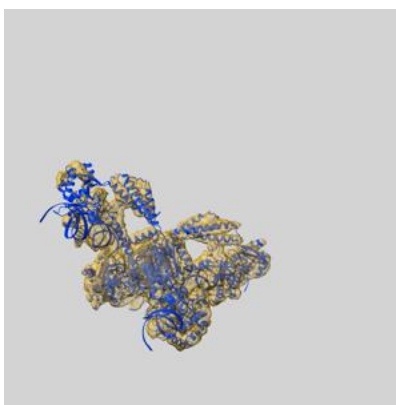
9 Map-model fit [i](#)

This section contains information regarding the fit between EMDB map EMD-60888 and PDB model 9IU3. Per-residue inclusion information can be found in section 3 on page 6.

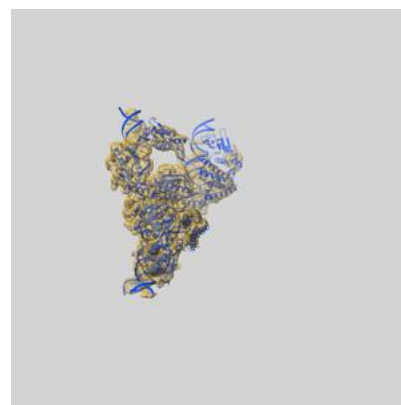
9.1 Map-model overlay [i](#)



X



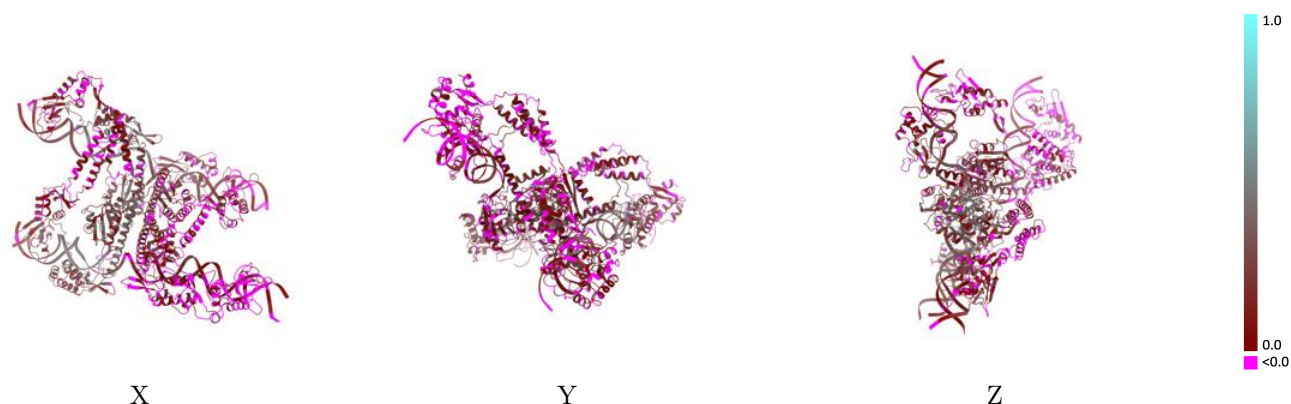
Y



Z

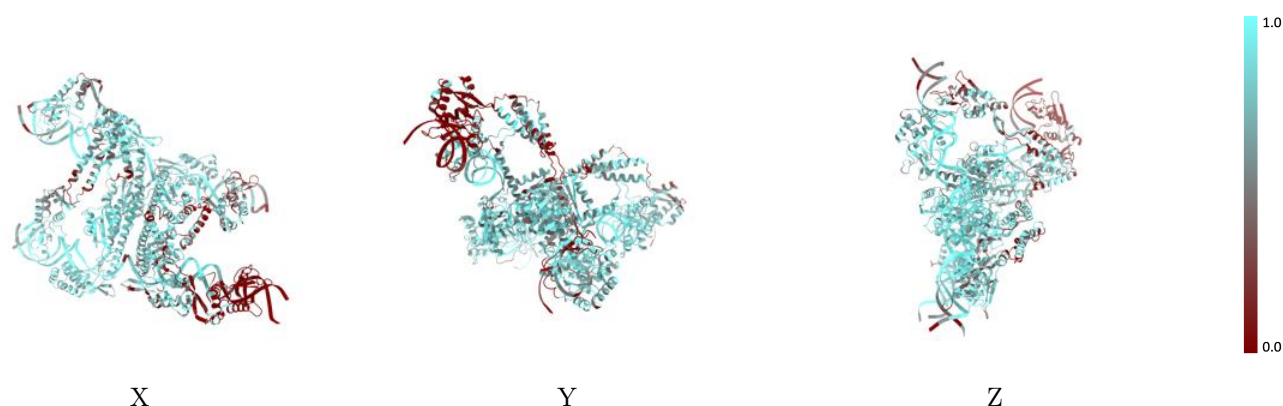
The images above show the 3D surface view of the map at the recommended contour level 0.02 at 50% transparency in yellow overlaid with a ribbon representation of the model coloured in blue. These images allow for the visual assessment of the quality of fit between the atomic model and the map.

9.2 Q-score mapped to coordinate model [i](#)



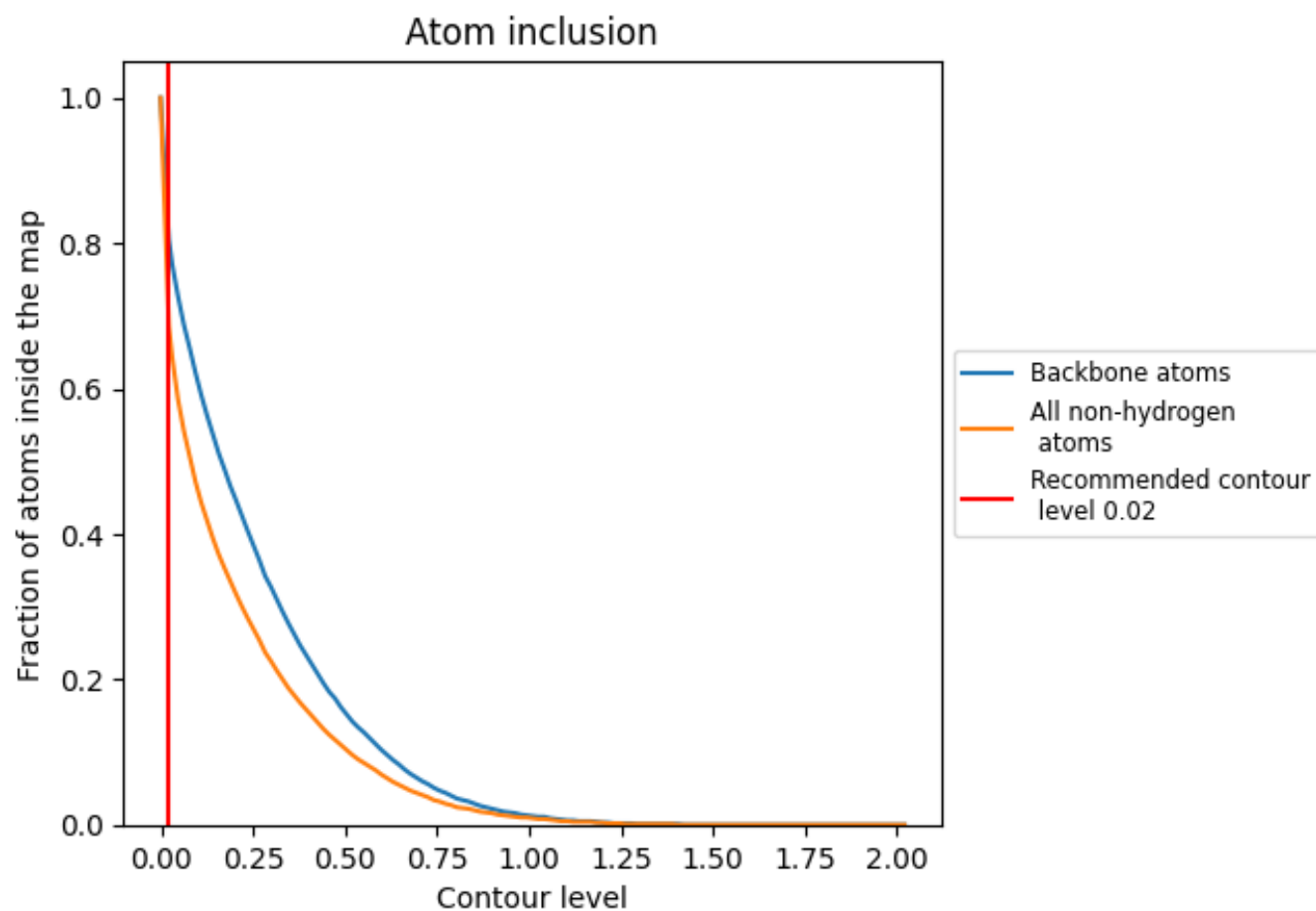
The images above show the model with each residue coloured according to its Q-score. This shows their resolvability in the map with higher Q-score values reflecting better resolvability. Please note: Q-score is calculating the resolvability of atoms, and thus high values are only expected at resolutions at which atoms can be resolved. Low Q-score values may therefore be expected for many entries.

9.3 Atom inclusion mapped to coordinate model [i](#)



The images above show the model with each residue coloured according to its atom inclusion. This shows to what extent they are inside the map at the recommended contour level (0.02).



























9.4 Atom inclusion [i](#)



At the recommended contour level, 80% of all backbone atoms, 69% of all non-hydrogen atoms, are inside the map.

9.5 Map-model fit summary ⓘ

The table lists the average atom inclusion at the recommended contour level (0.02) and Q-score for the entire model and for each chain.

Chain	Atom inclusion	Q-score
All	 0.6860	 0.1370
A	 0.5030	 0.0220
B	 0.7690	 0.1780
C	 0.6280	 0.0820
D	 0.7720	 0.1960
E1	 0.5290	 0.0810
E2	 0.8220	 0.2890
F1	 0.4990	 0.0190
F2	 0.8910	 0.3010
G1	 0.7490	 0.1630
G2	 0.8990	 0.3080
H1	 0.7450	 0.1850
H2	 0.9030	 0.3180

