



Full wwPDB X-ray Structure Validation Report ⓘ

Mar 9, 2026 – 03:23 AM UTC

PDB ID : 9I9U / pdb_00009i9u
Title : CARM1 in complex with arg-sDMA analog
Authors : Cura, V.; Dursun, E.; Troffer, N.; Cavarelli, J.
Deposited on : 2025-02-07
Resolution : 2.20 Å(reported)

This is a Full wwPDB X-ray Structure Validation Report for a publicly released PDB entry.

We welcome your comments at validation@mail.wwpdb.org

A user guide is available at

<https://www.wwpdb.org/validation/2017/XrayValidationReportHelp>

with specific help available everywhere you see the ⓘ symbol.

The types of validation reports are described at

<http://www.wwpdb.org/validation/2017/FAQs#types>.

The following versions of software and data (see [references ⓘ](#)) were used in the production of this report:

MolProbity	:	4-5-2 with Phenix2.0
Mogul	:	2022.3.0, CSD as543be (2022)
Xtriage (Phenix)	:	2.0
EDS	:	3.0
Buster-report	:	wwPDB partial adaption of 1.1.7 (2018)
Percentile statistics	:	20250101.v01 (using entries in the PDB archive January 1st 2025)
CCP4	:	9.0.010 (Gargrove)
Density-Fitness	:	1.0.12
Ideal geometry (proteins)	:	Engh & Huber (2001)
Ideal geometry (DNA, RNA)	:	Parkinson et al. (1996)
Validation Pipeline (wwPDB-VP)	:	2.49

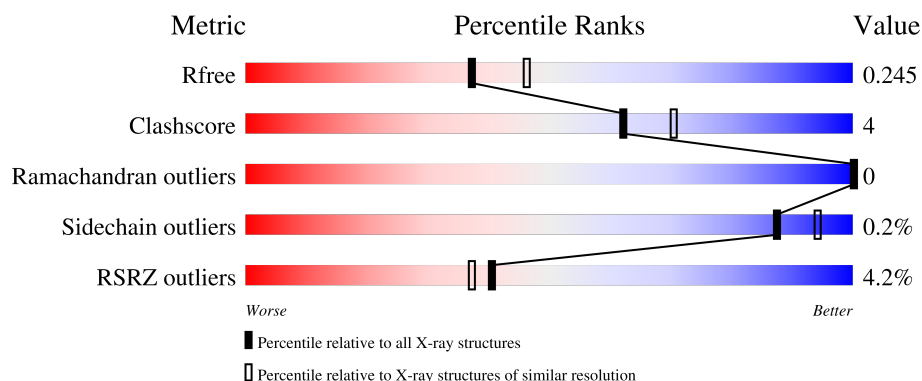
1 Overall quality at a glance

The following experimental techniques were used to determine the structure:

X-RAY DIFFRACTION

The reported resolution of this entry is 2.20 Å.

Percentile scores (ranging between 0-100) for global validation metrics of the entry are shown in the following graphic. The table shows the number of entries on which the scores are based.



Metric	Whole archive (#Entries)	Similar resolution (#Entries, resolution range(Å))
R_{free}	180053	6164 (2.20-2.20)
Clashscore	190562	6851 (2.20-2.20)
Ramachandran outliers	187476	6768 (2.20-2.20)
Sidechain outliers	187428	6769 (2.20-2.20)
RSRZ outliers	180081	6166 (2.20-2.20)

The table below summarises the geometric issues observed across the polymeric chains and their fit to the electron density. The red, orange, yellow and green segments of the lower bar indicate the fraction of residues that contain outliers for ≥ 3 , 2, 1 and 0 types of geometric quality criteria respectively. A grey segment represents the fraction of residues that are not modelled. The numeric value for each fraction is indicated below the corresponding segment, with a dot representing fractions $\leq 5\%$. The upper red bar (where present) indicates the fraction of residues that have poor fit to the electron density. The numeric value is given above the bar.

Mol	Chain	Length	Quality of chain
1	A	371	<div> <div>2%</div> <div>91%</div> <div>7%</div> <div>.</div> </div>
1	B	371	<div> <div>2%</div> <div>84%</div> <div>9%</div> <div>7%</div> </div>
1	C	371	<div> <div>6%</div> <div>86%</div> <div>11%</div> <div>.</div> </div>
1	D	371	<div> <div>5%</div> <div>81%</div> <div>12%</div> <div>8%</div> </div>

2 Entry composition

There are 4 unique types of molecules in this entry. The entry contains 22895 atoms, of which 11238 are hydrogens and 0 are deuteriums.

In the tables below, the ZeroOcc column contains the number of atoms modelled with zero occupancy, the AltConf column contains the number of residues with at least one atom in alternate conformation and the Trace column contains the number of residues modelled with at most 2 atoms.

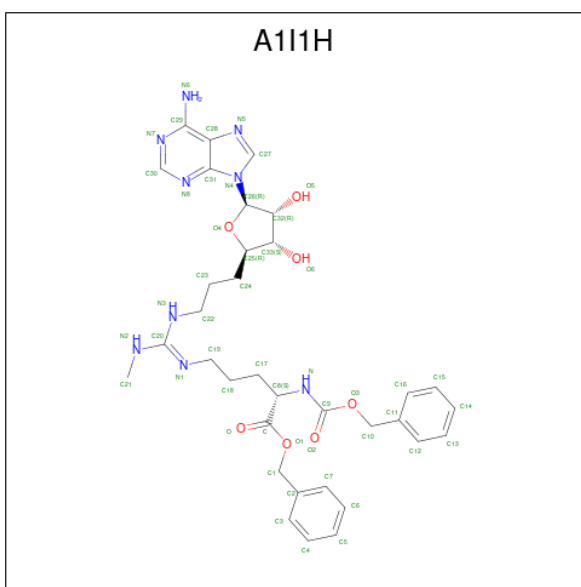
- Molecule 1 is a protein called Histone-arginine methyltransferase CARM1.

Mol	Chain	Residues	Atoms						ZeroOcc	AltConf	Trace
1	A	363	Total	C	H	N	O	S	0	0	0
			5728	1864	2831	480	538	15			
1	B	344	Total	C	H	N	O	S	0	0	0
			5474	1782	2712	458	508	14			
1	C	362	Total	C	H	N	O	S	0	0	0
			5704	1858	2818	476	537	15			
1	D	343	Total	C	H	N	O	S	0	0	0
			5460	1778	2705	457	506	14			

There are 12 discrepancies between the modelled and reference sequences:

Chain	Residue	Modelled	Actual	Comment	Reference
A	127	GLY	-	expression tag	UNP Q9WVG6
A	128	HIS	-	expression tag	UNP Q9WVG6
A	129	MET	-	expression tag	UNP Q9WVG6
B	127	GLY	-	expression tag	UNP Q9WVG6
B	128	HIS	-	expression tag	UNP Q9WVG6
B	129	MET	-	expression tag	UNP Q9WVG6
C	127	GLY	-	expression tag	UNP Q9WVG6
C	128	HIS	-	expression tag	UNP Q9WVG6
C	129	MET	-	expression tag	UNP Q9WVG6
D	127	GLY	-	expression tag	UNP Q9WVG6
D	128	HIS	-	expression tag	UNP Q9WVG6
D	129	MET	-	expression tag	UNP Q9WVG6

- Molecule 2 is (phenylmethyl) (2S)-5-[(Z)-[[3-[(2R,3S,4R,5R)-5-(6-aminopurin-9-yl)-3,4-bis(oxidanyl)oxolan-2-yl]propylamino]-(methylamino)methylidene]amino]-2-(phenylmethoxycarbonylamino)pentanoate (CCD ID: A1I1H) (formula: C₃₄H₄₃N₉O₇) (labeled as "Ligand of Interest" by depositor).



Mol	Chain	Residues	Atoms					ZeroOcc	AltConf
2	A	1	Total	C	H	N	O	0	0
			93	34	43	9	7		
2	B	1	Total	C	H	N	O	0	0
			93	34	43	9	7		
2	C	1	Total	C	H	N	O	0	0
			93	34	43	9	7		
2	D	1	Total	C	H	N	O	0	0
			93	34	43	9	7		

- Molecule 3 is CHLORIDE ION (CCD ID: CL) (formula: Cl).

Mol	Chain	Residues	Atoms		ZeroOcc	AltConf
3	A	1	Total	Cl	0	0
			1	1		

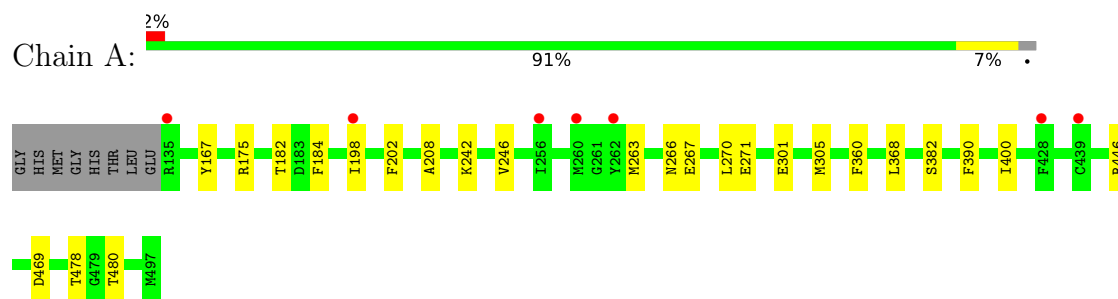
- Molecule 4 is water.

Mol	Chain	Residues	Atoms		ZeroOcc	AltConf
4	A	72	Total	O	0	0
			72	72		
4	B	59	Total	O	0	0
			59	59		
4	C	13	Total	O	0	0
			13	13		
4	D	12	Total	O	0	0
			12	12		

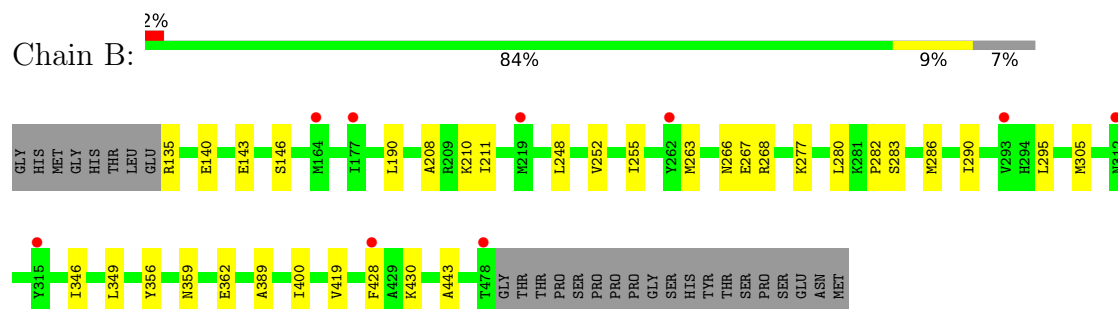
3 Residue-property plots [i](#)

These plots are drawn for all protein, RNA, DNA and oligosaccharide chains in the entry. The first graphic for a chain summarises the proportions of the various outlier classes displayed in the second graphic. The second graphic shows the sequence view annotated by issues in geometry and electron density. Residues are color-coded according to the number of geometric quality criteria for which they contain at least one outlier: green = 0, yellow = 1, orange = 2 and red = 3 or more. A red dot above a residue indicates a poor fit to the electron density ($RSRZ > 2$). Stretches of 2 or more consecutive residues without any outlier are shown as a green connector. Residues present in the sample, but not in the model, are shown in grey.

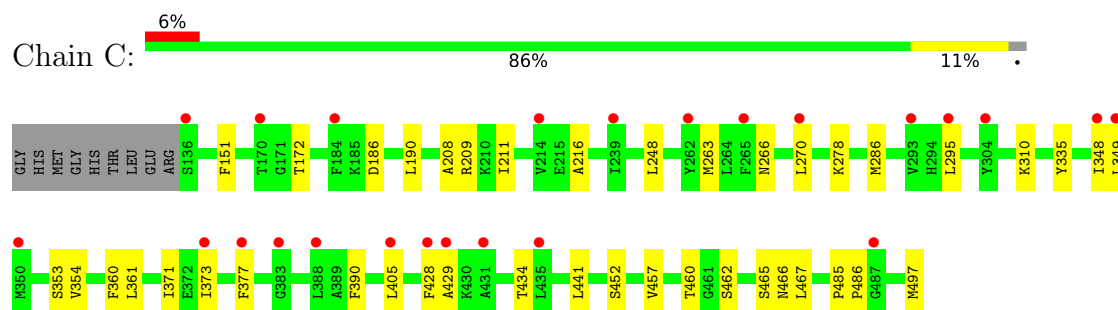
- Molecule 1: Histone-arginine methyltransferase CARM1



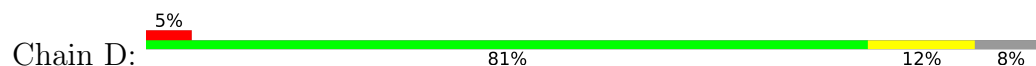
- Molecule 1: Histone-arginine methyltransferase CARM1

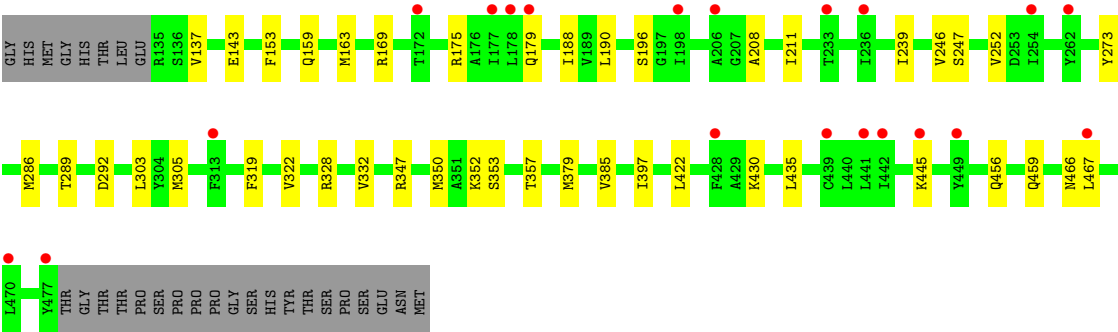


- Molecule 1: Histone-arginine methyltransferase CARM1



- Molecule 1: Histone-arginine methyltransferase CARM1





4 Data and refinement statistics

Property	Value	Source
Space group	P 21 21 2	Depositor
Cell constants a, b, c, α , β , γ	74.91Å 98.39Å 208.42Å 90.00° 90.00° 90.00°	Depositor
Resolution (Å)	47.88 – 2.20 47.88 – 2.20	Depositor EDS
% Data completeness (in resolution range)	98.5 (47.88-2.20) 98.7 (47.88-2.20)	Depositor EDS
R_{merge}	0.14	Depositor
R_{sym}	(Not available)	Depositor
$\langle I/\sigma(I) \rangle$ ¹	2.03 (at 2.20Å)	Xtriage
Refinement program	PHENIX 1.20.1_4487	Depositor
R, R_{free}	0.210 , 0.245 0.211 , 0.245	Depositor DCC
R_{free} test set	3877 reflections (4.90%)	wwPDB-VP
Wilson B-factor (Å ²)	43.4	Xtriage
Anisotropy	0.547	Xtriage
Bulk solvent k_{sol} (e/Å ³), B_{sol} (Å ²)	0.37 , 38.1	EDS
L-test for twinning ²	$\langle L \rangle = 0.50$, $\langle L^2 \rangle = 0.33$	Xtriage
Estimated twinning fraction	No twinning to report.	Xtriage
F_o, F_c correlation	0.95	EDS
Total number of atoms	22895	wwPDB-VP
Average B, all atoms (Å ²)	68.0	wwPDB-VP

Xtriage's analysis on translational NCS is as follows: *The analyses of the Patterson function reveals a significant off-origin peak that is 42.43 % of the origin peak, indicating pseudo-translational symmetry. The chance of finding a peak of this or larger height randomly in a structure without pseudo-translational symmetry is equal to 2.0434e-04. The detected translational NCS is most likely also responsible for the elevated intensity ratio.*

¹Intensities estimated from amplitudes.

²Theoretical values of $\langle |L| \rangle$, $\langle L^2 \rangle$ for acentric reflections are 0.5, 0.333 respectively for untwinned datasets, and 0.375, 0.2 for perfectly twinned datasets.

5 Model quality [i](#)

5.1 Standard geometry [i](#)

Bond lengths and bond angles in the following residue types are not validated in this section: A1I1H, CL

The Z score for a bond length (or angle) is the number of standard deviations the observed value is removed from the expected value. A bond length (or angle) with $|Z| > 5$ is considered an outlier worth inspection. RMSZ is the root-mean-square of all Z scores of the bond lengths (or angles).

Mol	Chain	Bond lengths		Bond angles	
		RMSZ	$\# Z > 5$	RMSZ	$\# Z > 5$
1	A	0.48	0/2974	0.43	0/4035
1	B	0.44	0/2832	0.41	0/3837
1	C	0.32	0/2963	0.34	0/4021
1	D	0.30	0/2825	0.35	0/3827
All	All	0.39	0/11594	0.39	0/15720

Chiral center outliers are detected by calculating the chiral volume of a chiral center and verifying if the center is modelled as a planar moiety or with the opposite hand. A planarity outlier is detected by checking planarity of atoms in a peptide group, atoms in a mainchain group or atoms of a sidechain that are expected to be planar.

Mol	Chain	#Chirality outliers	#Planarity outliers
1	A	0	1

There are no bond length outliers.

There are no bond angle outliers.

There are no chirality outliers.

All (1) planarity outliers are listed below:

Mol	Chain	Res	Type	Group
1	A	175	ARG	Sidechain

5.2 Too-close contacts [i](#)

In the following table, the Non-H and H(model) columns list the number of non-hydrogen atoms and hydrogen atoms in the chain respectively. The H(added) column lists the number of hydrogen atoms added and optimized by MolProbity. The Clashes column lists the number of clashes within the asymmetric unit, whereas Symm-Clashes lists symmetry-related clashes.

Mol	Chain	Non-H	H(model)	H(added)	Clashes	Symm-Clashes
1	A	2897	2831	2831	13	0
1	B	2762	2712	2712	25	0
1	C	2886	2818	2818	26	1
1	D	2755	2705	2705	32	1
2	A	50	43	0	0	0
2	B	50	43	0	0	0
2	C	50	43	0	0	0
2	D	50	43	0	1	0
3	A	1	0	0	0	0
4	A	72	0	0	0	0
4	B	59	0	0	2	0
4	C	13	0	0	2	0
4	D	12	0	0	1	0
All	All	11657	11238	11066	93	1

The all-atom clashscore is defined as the number of clashes found per 1000 atoms (including hydrogen atoms). The all-atom clashscore for this structure is 4.

All (93) close contacts within the same asymmetric unit are listed below, sorted by their clash magnitude.

Atom-1	Atom-2	Interatomic distance (Å)	Clash overlap (Å)
1:B:356:TYR:OH	4:B:601:HOH:O	2.01	0.79
1:D:292:ASP:OD1	1:D:357:THR:HG23	1.86	0.74
1:B:305:MET:CE	1:D:305:MET:HE2	2.23	0.69
1:D:350:MET:HE1	1:D:385:VAL:HG22	1.74	0.69
1:C:190:LEU:HD13	1:C:248:LEU:HD21	1.77	0.67
1:D:319:PHE:O	1:D:322:VAL:HG22	1.98	0.63
1:C:208:ALA:HB3	1:C:211:ILE:HD11	1.81	0.63
2:D:501:A1I1H:O2	4:D:601:HOH:O	2.16	0.63
1:B:362:GLU:OE1	4:B:602:HOH:O	2.16	0.61
1:C:266:ASN:O	4:C:601:HOH:O	2.16	0.61
1:B:305:MET:HE1	1:D:305:MET:HE2	1.81	0.61
1:D:466:ASN:C	1:D:467:LEU:HD23	2.26	0.60
1:D:350:MET:CE	1:D:385:VAL:HG22	2.31	0.60
1:B:135:ARG:HG2	1:B:140:GLU:HG2	1.85	0.58
1:B:135:ARG:HD2	1:B:140:GLU:OE2	2.04	0.57
1:D:289:THR:HB	1:D:397:ILE:HD12	1.87	0.57
1:C:278:LYS:NZ	4:C:603:HOH:O	2.36	0.56
1:D:190:LEU:HB2	1:D:252:VAL:HG11	1.89	0.55
1:A:446:ARG:NH2	1:A:469:ASP:OD1	2.35	0.55
1:C:295:LEU:HD21	1:C:390:PHE:CE2	2.41	0.54
1:D:347:ARG:O	1:D:347:ARG:HD2	2.07	0.54

Continued on next page...

Continued from previous page...

Atom-1	Atom-2	Interatomic distance (Å)	Clash overlap (Å)
1:C:310:LYS:HE3	1:C:335:TYR:CE1	2.42	0.53
1:D:239:ILE:HG21	1:D:246:VAL:HG11	1.89	0.53
1:D:188:ILE:HD12	1:D:188:ILE:N	2.24	0.53
1:D:328:ARG:O	1:D:332:VAL:HG23	2.09	0.52
1:B:263:MET:HE3	1:B:419:VAL:HG11	1.92	0.52
1:C:286:MET:HG3	1:C:361:LEU:HD23	1.91	0.52
1:C:348:ILE:HG13	1:C:349:LEU:HD23	1.92	0.52
1:D:143:GLU:HG2	1:D:445:LYS:HB3	1.91	0.52
1:D:459:GLN:N	1:D:459:GLN:OE1	2.43	0.51
1:B:400:ILE:N	1:B:400:ILE:HD12	2.26	0.51
1:A:478:THR:OG1	1:A:480:THR:HG23	2.11	0.50
1:D:466:ASN:O	1:D:467:LEU:HD23	2.12	0.49
1:C:186:ASP:CA	1:C:209:ARG:HD3	2.43	0.49
1:C:371:ILE:HB	1:C:441:LEU:HD12	1.94	0.49
1:D:208:ALA:HB3	1:D:211:ILE:HD11	1.95	0.48
1:A:182:THR:HG23	1:A:400:ILE:HD11	1.95	0.48
1:A:266:ASN:O	1:A:267:GLU:HB2	2.14	0.47
1:B:263:MET:CE	1:B:419:VAL:HG11	2.44	0.47
1:B:190:LEU:HD13	1:B:248:LEU:HD11	1.96	0.47
1:D:435:LEU:HD12	1:D:456:GLN:O	2.15	0.47
1:D:305:MET:HE3	1:D:305:MET:HA	1.97	0.47
1:C:457:VAL:CG1	1:C:460:THR:HG22	2.45	0.46
1:B:208:ALA:HB3	1:B:211:ILE:HD11	1.97	0.46
1:A:270:LEU:HD22	1:A:360:PHE:CE1	2.51	0.46
1:C:452:SER:HA	1:C:467:LEU:HD13	1.98	0.46
1:D:163:MET:HB3	1:D:169:ARG:HH12	1.81	0.45
1:D:153:PHE:CZ	1:D:159:GLN:OE1	2.69	0.45
1:C:354:VAL:HG13	1:C:377:PHE:CE1	2.50	0.45
1:A:271:GLU:HG3	1:A:368:LEU:HD12	1.98	0.45
1:B:305:MET:HE1	1:D:305:MET:CE	2.47	0.45
1:A:263:MET:O	1:A:263:MET:HG2	2.17	0.45
1:D:328:ARG:CZ	1:D:332:VAL:HG21	2.46	0.45
1:B:277:LYS:HD2	1:B:286:MET:HE2	1.99	0.45
1:C:428:PHE:CD1	1:C:429:ALA:N	2.85	0.44
1:D:175:ARG:O	1:D:179:GLN:HG3	2.18	0.44
1:B:428:PHE:CE1	1:B:430:LYS:HD3	2.52	0.44
1:D:246:VAL:CG1	1:D:247:SER:N	2.80	0.44
1:B:210:LYS:HB2	1:B:210:LYS:HZ3	1.83	0.44
1:C:263:MET:HE2	1:C:390:PHE:CD2	2.53	0.44
1:D:303:LEU:HG	1:D:422:LEU:HD11	1.99	0.44
1:C:295:LEU:O	1:C:353:SER:HA	2.18	0.43

Continued on next page...

Continued from previous page...

Atom-1	Atom-2	Interatomic distance (Å)	Clash overlap (Å)
1:C:295:LEU:CD1	1:C:373:ILE:HG21	2.48	0.43
1:A:198:ILE:HD11	1:A:202:PHE:CZ	2.54	0.43
1:B:268:ARG:CZ	1:B:443:ALA:HB1	2.49	0.43
1:B:295:LEU:HA	1:B:389:ALA:O	2.19	0.43
1:C:270:LEU:HD22	1:C:360:PHE:CE1	2.54	0.43
1:C:172:THR:HG21	1:C:405:LEU:HB2	1.99	0.42
1:D:239:ILE:HG21	1:D:246:VAL:CG1	2.49	0.42
1:C:465:SER:O	1:C:466:ASN:HB2	2.18	0.42
1:A:167:TYR:CD2	1:D:430:LYS:HD2	2.55	0.42
1:B:143:GLU:HG3	1:B:146:SER:H	1.83	0.42
1:A:263:MET:HE2	1:A:390:PHE:CG	2.54	0.42
1:B:346:ILE:HG13	1:B:349:LEU:HD12	2.00	0.42
1:C:377:PHE:O	1:C:434:THR:HA	2.20	0.42
1:C:460:THR:HG23	1:C:462:SER:H	1.83	0.42
1:D:352:LYS:O	1:D:352:LYS:HD2	2.20	0.42
1:C:186:ASP:HA	1:C:209:ARG:HD3	2.02	0.42
1:B:428:PHE:CZ	1:B:430:LYS:HD3	2.55	0.42
1:A:242:LYS:O	1:A:246:VAL:HG13	2.20	0.41
1:A:301:GLU:O	1:A:305:MET:HG3	2.21	0.41
1:B:282:PRO:O	1:B:283:SER:OG	2.31	0.41
1:D:379:MET:HA	1:D:379:MET:HE3	2.02	0.41
1:D:188:ILE:N	1:D:188:ILE:CD1	2.83	0.41
1:C:286:MET:CG	1:C:361:LEU:HD23	2.50	0.41
1:B:255:ILE:HG13	1:B:280:LEU:HD13	2.01	0.41
1:B:290:ILE:HG22	1:B:359:ASN:HA	2.02	0.41
1:C:485:PRO:HA	1:C:486:PRO:HD3	1.98	0.41
1:A:184:PHE:O	1:A:208:ALA:HA	2.21	0.40
1:B:266:ASN:O	1:B:267:GLU:HB2	2.22	0.40
1:B:190:LEU:HB2	1:B:252:VAL:HG11	2.04	0.40
1:C:151:PHE:CE1	1:C:216:ALA:HB3	2.57	0.40
1:D:273:TYR:CZ	1:D:286:MET:HE2	2.56	0.40

All (1) symmetry-related close contacts are listed below. The label for Atom-2 includes the symmetry operator and encoded unit-cell translations to be applied.

Atom-1	Atom-2	Interatomic distance (Å)	Clash overlap (Å)
1:C:497:MET:O	1:D:353:SER:OG[2_655]	2.11	0.09

5.3 Torsion angles

5.3.1 Protein backbone

In the following table, the Percentiles column shows the percent Ramachandran outliers of the chain as a percentile score with respect to all X-ray entries followed by that with respect to entries of similar resolution.

The Analysed column shows the number of residues for which the backbone conformation was analysed, and the total number of residues.

Mol	Chain	Analysed	Favoured	Allowed	Outliers	Percentiles	
1	A	361/371 (97%)	351 (97%)	10 (3%)	0	100	100
1	B	342/371 (92%)	332 (97%)	10 (3%)	0	100	100
1	C	360/371 (97%)	348 (97%)	12 (3%)	0	100	100
1	D	341/371 (92%)	325 (95%)	16 (5%)	0	100	100
All	All	1404/1484 (95%)	1356 (97%)	48 (3%)	0	100	100

There are no Ramachandran outliers to report.

5.3.2 Protein sidechains

In the following table, the Percentiles column shows the percent sidechain outliers of the chain as a percentile score with respect to all X-ray entries followed by that with respect to entries of similar resolution.

The Analysed column shows the number of residues for which the sidechain conformation was analysed, and the total number of residues.

Mol	Chain	Analysed	Rotameric	Outliers	Percentiles	
1	A	317/323 (98%)	316 (100%)	1 (0%)	86	93
1	B	300/323 (93%)	300 (100%)	0	100	100
1	C	316/323 (98%)	316 (100%)	0	100	100
1	D	299/323 (93%)	297 (99%)	2 (1%)	76	87
All	All	1232/1292 (95%)	1229 (100%)	3 (0%)	87	94

All (3) residues with a non-rotameric sidechain are listed below:

Mol	Chain	Res	Type
1	A	382	SER
1	D	137	VAL
1	D	196	SER

Sometimes sidechains can be flipped to improve hydrogen bonding and reduce clashes. All (32) such sidechains are listed below:

Mol	Chain	Res	Type
1	A	149	GLN
1	A	152	GLN
1	A	159	GLN
1	A	162	ASN
1	A	165	GLN
1	A	181	HIS
1	A	221	GLN
1	A	424	GLN
1	A	466	ASN
1	A	496	ASN
1	B	149	GLN
1	B	152	GLN
1	B	159	GLN
1	B	221	GLN
1	B	307	GLN
1	C	152	GLN
1	C	179	GLN
1	C	181	HIS
1	C	221	GLN
1	C	359	ASN
1	D	149	GLN
1	D	161	GLN
1	D	162	ASN
1	D	165	GLN
1	D	205	GLN
1	D	221	GLN
1	D	266	ASN
1	D	312	ASN
1	D	359	ASN
1	D	378	HIS
1	D	415	HIS
1	D	472	ASN

5.3.3 RNA ⓘ

There are no RNA molecules in this entry.

5.4 Non-standard residues in protein, DNA, RNA chains ⓘ

There are no non-standard protein/DNA/RNA residues in this entry.

5.5 Carbohydrates [i](#)

There are no oligosaccharides in this entry.

5.6 Ligand geometry [i](#)

Of 5 ligands modelled in this entry, 1 is monoatomic - leaving 4 for Mogul analysis.

In the following table, the Counts columns list the number of bonds (or angles) for which Mogul statistics could be retrieved, the number of bonds (or angles) that are observed in the model and the number of bonds (or angles) that are defined in the Chemical Component Dictionary. The Link column lists molecule types, if any, to which the group is linked. The Z score for a bond length (or angle) is the number of standard deviations the observed value is removed from the expected value. A bond length (or angle) with $|Z| > 2$ is considered an outlier worth inspection. RMSZ is the root-mean-square of all Z scores of the bond lengths (or angles).

Mol	Type	Chain	Res	Link	Bond lengths			Bond angles		
					Counts	RMSZ	# Z > 2	Counts	RMSZ	# Z > 2
2	A1I1H	D	501	-	53,54,54	4.00	27 (50%)	69,72,72	2.76	20 (28%)
2	A1I1H	A	501	-	53,54,54	3.92	25 (47%)	69,72,72	2.97	21 (30%)
2	A1I1H	C	501	-	53,54,54	3.91	28 (52%)	69,72,72	3.21	18 (26%)
2	A1I1H	B	501	-	53,54,54	3.99	27 (50%)	69,72,72	3.09	19 (27%)

In the following table, the Chirals column lists the number of chiral outliers, the number of chiral centers analysed, the number of these observed in the model and the number defined in the Chemical Component Dictionary. Similar counts are reported in the Torsion and Rings columns. '-' means no outliers of that kind were identified.

Mol	Type	Chain	Res	Link	Chirals	Torsions	Rings
2	A1I1H	D	501	-	-	7/36/54/54	0/5/5/5
2	A1I1H	A	501	-	-	9/36/54/54	0/5/5/5
2	A1I1H	C	501	-	-	7/36/54/54	0/5/5/5
2	A1I1H	B	501	-	-	9/36/54/54	0/5/5/5

All (107) bond length outliers are listed below:

Mol	Chain	Res	Type	Atoms	Z	Observed(Å)	Ideal(Å)
2	B	501	A1I1H	C28-N5	9.83	1.57	1.39
2	D	501	A1I1H	C28-N5	9.52	1.56	1.39
2	C	501	A1I1H	C28-N5	9.26	1.56	1.39
2	B	501	A1I1H	C4-C3	8.94	1.54	1.38
2	D	501	A1I1H	C4-C3	8.85	1.54	1.38
2	C	501	A1I1H	C4-C3	8.84	1.54	1.38

Continued on next page...

Continued from previous page...

Mol	Chain	Res	Type	Atoms	Z	Observed(Å)	Ideal(Å)
2	A	501	A1I1H	C4-C3	8.72	1.53	1.38
2	A	501	A1I1H	C28-N5	8.59	1.54	1.39
2	C	501	A1I1H	C15-C16	8.31	1.53	1.38
2	D	501	A1I1H	C15-C16	8.30	1.53	1.38
2	A	501	A1I1H	C15-C16	8.04	1.52	1.38
2	B	501	A1I1H	C15-C16	7.99	1.52	1.38
2	A	501	A1I1H	C27-N4	-7.79	1.24	1.37
2	A	501	A1I1H	C12-C11	7.70	1.54	1.38
2	D	501	A1I1H	C27-N4	-7.45	1.24	1.37
2	B	501	A1I1H	C12-C11	7.45	1.53	1.38
2	A	501	A1I1H	C6-C5	7.42	1.54	1.38
2	D	501	A1I1H	C7-C2	7.31	1.53	1.38
2	A	501	A1I1H	C7-C2	7.26	1.53	1.38
2	D	501	A1I1H	C12-C11	7.26	1.53	1.38
2	B	501	A1I1H	C7-C2	7.18	1.53	1.38
2	D	501	A1I1H	C20-N3	7.13	1.49	1.34
2	C	501	A1I1H	C6-C5	7.04	1.53	1.38
2	C	501	A1I1H	C7-C2	7.03	1.52	1.38
2	C	501	A1I1H	C12-C11	6.97	1.52	1.38
2	C	501	A1I1H	C27-N4	-6.95	1.25	1.37
2	A	501	A1I1H	C14-C13	6.94	1.53	1.38
2	C	501	A1I1H	C20-N3	6.91	1.49	1.34
2	D	501	A1I1H	C6-C5	6.90	1.53	1.38
2	B	501	A1I1H	C6-C5	6.85	1.53	1.38
2	C	501	A1I1H	C14-C13	6.79	1.53	1.38
2	B	501	A1I1H	O4-C26	6.75	1.57	1.42
2	A	501	A1I1H	C20-N2	6.68	1.47	1.33
2	B	501	A1I1H	C20-N3	6.61	1.48	1.34
2	D	501	A1I1H	C20-N2	6.60	1.47	1.33
2	D	501	A1I1H	C14-C13	6.56	1.52	1.38
2	C	501	A1I1H	C20-N2	6.55	1.47	1.33
2	B	501	A1I1H	C20-N2	6.53	1.47	1.33
2	A	501	A1I1H	O4-C26	6.48	1.57	1.42
2	A	501	A1I1H	C20-N3	6.46	1.48	1.34
2	B	501	A1I1H	C14-C13	6.45	1.52	1.38
2	C	501	A1I1H	O4-C26	6.42	1.56	1.42
2	B	501	A1I1H	C27-N4	-6.17	1.27	1.37
2	D	501	A1I1H	O4-C26	6.16	1.56	1.42
2	B	501	A1I1H	C9-N	5.68	1.48	1.34
2	D	501	A1I1H	C9-N	5.45	1.48	1.34
2	B	501	A1I1H	C31-N4	-5.38	1.26	1.37
2	D	501	A1I1H	C31-N4	-5.03	1.27	1.37

Continued on next page...

Continued from previous page...

Mol	Chain	Res	Type	Atoms	Z	Observed(Å)	Ideal(Å)
2	C	501	A1I1H	C31-N4	-4.95	1.27	1.37
2	A	501	A1I1H	C9-N	4.95	1.47	1.34
2	C	501	A1I1H	C9-N	4.94	1.47	1.34
2	A	501	A1I1H	C31-N4	-4.73	1.27	1.37
2	D	501	A1I1H	O1-C	4.68	1.43	1.33
2	D	501	A1I1H	C29-N6	4.28	1.45	1.34
2	A	501	A1I1H	C29-N6	4.25	1.45	1.34
2	B	501	A1I1H	C29-N6	4.19	1.44	1.34
2	B	501	A1I1H	O1-C	4.15	1.42	1.33
2	B	501	A1I1H	C27-N5	4.12	1.39	1.31
2	C	501	A1I1H	O1-C	4.04	1.41	1.33
2	A	501	A1I1H	O1-C	3.94	1.41	1.33
2	C	501	A1I1H	C29-N6	3.80	1.43	1.34
2	D	501	A1I1H	O3-C9	3.60	1.42	1.35
2	D	501	A1I1H	C13-C12	-3.56	1.32	1.38
2	A	501	A1I1H	O3-C9	3.56	1.42	1.35
2	C	501	A1I1H	O3-C9	3.53	1.42	1.35
2	A	501	A1I1H	C13-C12	-3.49	1.32	1.38
2	C	501	A1I1H	C13-C12	-3.47	1.33	1.38
2	A	501	A1I1H	C3-C2	-3.44	1.32	1.38
2	B	501	A1I1H	C13-C12	-3.43	1.33	1.38
2	B	501	A1I1H	O3-C9	3.40	1.42	1.35
2	D	501	A1I1H	C6-C7	-3.19	1.33	1.38
2	D	501	A1I1H	C27-N5	3.14	1.37	1.31
2	B	501	A1I1H	C16-C11	-3.13	1.32	1.38
2	D	501	A1I1H	C16-C11	-3.12	1.32	1.38
2	C	501	A1I1H	C6-C7	-3.11	1.33	1.38
2	B	501	A1I1H	C6-C7	-3.06	1.33	1.38
2	A	501	A1I1H	C32-C26	-3.01	1.44	1.53
2	C	501	A1I1H	C16-C11	-3.00	1.33	1.38
2	C	501	A1I1H	C3-C2	-3.00	1.33	1.38
2	A	501	A1I1H	C5-C4	-2.89	1.31	1.38
2	C	501	A1I1H	C27-N5	2.87	1.37	1.31
2	A	501	A1I1H	C16-C11	-2.86	1.33	1.38
2	B	501	A1I1H	C5-C4	-2.86	1.32	1.38
2	B	501	A1I1H	C3-C2	-2.83	1.33	1.38
2	C	501	A1I1H	C15-C14	-2.79	1.32	1.38
2	D	501	A1I1H	C3-C2	-2.78	1.33	1.38
2	A	501	A1I1H	C27-N5	2.66	1.36	1.31
2	D	501	A1I1H	C5-C4	-2.63	1.32	1.38
2	A	501	A1I1H	C6-C7	-2.62	1.34	1.38
2	D	501	A1I1H	C32-C26	-2.61	1.45	1.53

Continued on next page...

Continued from previous page...

Mol	Chain	Res	Type	Atoms	Z	Observed(Å)	Ideal(Å)
2	C	501	A1I1H	C32-C26	-2.56	1.45	1.53
2	B	501	A1I1H	C15-C14	-2.54	1.32	1.38
2	D	501	A1I1H	C15-C14	-2.52	1.32	1.38
2	B	501	A1I1H	C28-C31	2.48	1.43	1.39
2	A	501	A1I1H	C18-C19	2.47	1.60	1.51
2	A	501	A1I1H	C10-C11	2.45	1.56	1.50
2	C	501	A1I1H	C5-C4	-2.39	1.33	1.38
2	D	501	A1I1H	O1-C1	-2.38	1.40	1.45
2	B	501	A1I1H	C10-C11	2.36	1.56	1.50
2	B	501	A1I1H	O1-C1	-2.30	1.40	1.45
2	C	501	A1I1H	C28-C31	2.29	1.43	1.39
2	C	501	A1I1H	O1-C1	-2.27	1.40	1.45
2	D	501	A1I1H	C10-C11	2.25	1.55	1.50
2	C	501	A1I1H	C18-C19	2.22	1.59	1.51
2	C	501	A1I1H	C10-C11	2.21	1.55	1.50
2	D	501	A1I1H	C18-C19	2.16	1.58	1.51
2	B	501	A1I1H	O3-C10	-2.05	1.41	1.45

All (78) bond angle outliers are listed below:

Mol	Chain	Res	Type	Atoms	Z	Observed(°)	Ideal(°)
2	A	501	A1I1H	C31-N4-C27	16.77	123.35	105.74
2	C	501	A1I1H	C31-N4-C27	16.52	123.08	105.74
2	B	501	A1I1H	C31-N4-C27	16.47	123.03	105.74
2	D	501	A1I1H	C31-N4-C27	16.12	122.67	105.74
2	C	501	A1I1H	N3-C20-N2	14.75	133.00	119.48
2	B	501	A1I1H	N3-C20-N2	13.53	131.88	119.48
2	D	501	A1I1H	C21-N2-C20	-6.61	109.46	123.65
2	A	501	A1I1H	O3-C9-N	5.95	123.18	110.45
2	A	501	A1I1H	C22-N3-C20	-5.11	113.77	123.36
2	A	501	A1I1H	C19-N1-C20	-5.06	110.25	121.86
2	A	501	A1I1H	C21-N2-C20	-5.04	112.83	123.65
2	D	501	A1I1H	C22-N3-C20	-4.89	114.18	123.36
2	A	501	A1I1H	C28-C31-N4	-4.69	100.70	105.81
2	C	501	A1I1H	C28-C31-N4	-4.59	100.81	105.81
2	D	501	A1I1H	O3-C9-N	4.40	119.86	110.45
2	B	501	A1I1H	O3-C9-N	4.37	119.79	110.45
2	D	501	A1I1H	C31-N4-C26	-4.26	116.67	126.63
2	C	501	A1I1H	C31-N4-C26	-4.24	116.71	126.63
2	A	501	A1I1H	N4-C27-N5	-4.22	107.95	113.94
2	B	501	A1I1H	C31-N4-C26	-4.18	116.86	126.63
2	B	501	A1I1H	C28-C31-N4	-4.14	101.30	105.81

Continued on next page...

Continued from previous page...

Mol	Chain	Res	Type	Atoms	Z	Observed(°)	Ideal(°)
2	D	501	A1I1H	C28-C31-N4	-3.96	101.49	105.81
2	A	501	A1I1H	O1-C-C8	3.89	120.72	111.58
2	A	501	A1I1H	C31-N4-C26	-3.86	117.60	126.63
2	C	501	A1I1H	O3-C9-N	3.86	118.70	110.45
2	C	501	A1I1H	C19-N1-C20	-3.74	113.27	121.86
2	B	501	A1I1H	C19-N1-C20	-3.67	113.43	121.86
2	A	501	A1I1H	C26-N4-C27	-3.63	119.05	127.09
2	C	501	A1I1H	N4-C27-N5	-3.62	108.81	113.94
2	A	501	A1I1H	O2-C9-N	-3.59	118.97	124.86
2	B	501	A1I1H	N4-C27-N5	-3.58	108.86	113.94
2	D	501	A1I1H	C31-C28-N5	-3.49	106.60	110.58
2	C	501	A1I1H	C18-C19-N1	-3.47	104.53	110.67
2	C	501	A1I1H	N8-C31-N4	3.41	132.97	127.17
2	A	501	A1I1H	N8-C31-N4	3.41	132.97	127.17
2	A	501	A1I1H	O3-C9-O2	-3.34	117.85	124.26
2	D	501	A1I1H	O1-C-C8	3.34	119.43	111.58
2	D	501	A1I1H	N4-C27-N5	-3.30	109.26	113.94
2	C	501	A1I1H	C31-C28-N5	-3.20	106.92	110.58
2	B	501	A1I1H	C26-N4-C27	-3.15	120.11	127.09
2	C	501	A1I1H	C26-N4-C27	-3.10	120.20	127.09
2	C	501	A1I1H	O1-C-C8	3.07	118.80	111.58
2	B	501	A1I1H	N8-C31-N4	3.06	132.38	127.17
2	C	501	A1I1H	C24-C25-C33	-3.02	109.18	115.53
2	D	501	A1I1H	N8-C31-N4	3.00	132.27	127.17
2	A	501	A1I1H	C33-C32-C26	2.96	107.07	101.46
2	D	501	A1I1H	C19-N1-C20	-2.94	115.12	121.86
2	D	501	A1I1H	N3-C20-N2	-2.93	116.80	119.48
2	A	501	A1I1H	O1-C-O	-2.91	118.82	124.14
2	D	501	A1I1H	C26-N4-C27	-2.90	120.65	127.09
2	D	501	A1I1H	O2-C9-N	-2.89	120.13	124.86
2	B	501	A1I1H	O1-C-C8	2.89	118.36	111.58
2	A	501	A1I1H	C31-C28-N5	-2.83	107.35	110.58
2	D	501	A1I1H	C33-C32-C26	2.82	106.80	101.46
2	B	501	A1I1H	C33-C32-C26	2.74	106.65	101.46
2	B	501	A1I1H	O2-C9-N	-2.73	120.39	124.86
2	B	501	A1I1H	C31-C28-N5	-2.72	107.47	110.58
2	B	501	A1I1H	C28-N5-C27	-2.62	99.33	103.45
2	C	501	A1I1H	C29-C28-N5	2.60	137.10	132.09
2	D	501	A1I1H	C29-C28-N5	2.55	137.00	132.09
2	C	501	A1I1H	O2-C9-N	-2.51	120.75	124.86
2	C	501	A1I1H	C23-C22-N3	-2.50	105.19	112.20
2	C	501	A1I1H	C33-C32-C26	2.41	106.02	101.46

Continued on next page...

Continued from previous page...

Mol	Chain	Res	Type	Atoms	Z	Observed(°)	Ideal(°)
2	A	501	A1I1H	C32-C33-C25	2.38	107.20	102.61
2	B	501	A1I1H	C32-C33-C25	2.34	107.13	102.61
2	A	501	A1I1H	C24-C25-C33	-2.33	110.62	115.53
2	D	501	A1I1H	C32-C33-C25	2.32	107.10	102.61
2	B	501	A1I1H	O3-C9-O2	-2.32	119.81	124.26
2	D	501	A1I1H	C24-C25-C33	-2.25	110.81	115.53
2	D	501	A1I1H	O3-C9-O2	-2.22	120.00	124.26
2	C	501	A1I1H	C21-N2-C20	-2.21	118.90	123.65
2	D	501	A1I1H	C28-N5-C27	-2.21	99.98	103.45
2	B	501	A1I1H	C24-C25-C33	-2.20	110.90	115.53
2	B	501	A1I1H	C23-C22-N3	-2.18	106.07	112.20
2	B	501	A1I1H	C29-C28-N5	2.12	136.19	132.09
2	A	501	A1I1H	C29-C28-N5	2.05	136.04	132.09
2	A	501	A1I1H	C1-O1-C	-2.04	112.45	116.28
2	A	501	A1I1H	C23-C24-C25	-2.03	108.37	113.81

There are no chirality outliers.

All (32) torsion outliers are listed below:

Mol	Chain	Res	Type	Atoms
2	A	501	A1I1H	C17-C8-N-C9
2	A	501	A1I1H	C8-C-O1-C1
2	A	501	A1I1H	C17-C18-C19-N1
2	A	501	A1I1H	O2-C9-O3-C10
2	B	501	A1I1H	C23-C24-C25-C33
2	B	501	A1I1H	N-C9-O3-C10
2	B	501	A1I1H	O2-C9-O3-C10
2	C	501	A1I1H	C17-C18-C19-N1
2	C	501	A1I1H	N-C9-O3-C10
2	C	501	A1I1H	O2-C9-O3-C10
2	A	501	A1I1H	N-C9-O3-C10
2	A	501	A1I1H	O-C-O1-C1
2	C	501	A1I1H	C8-C-O1-C1
2	C	501	A1I1H	O-C-O1-C1
2	B	501	A1I1H	O3-C9-N-C8
2	D	501	A1I1H	O2-C9-O3-C10
2	B	501	A1I1H	N3-C22-C23-C24
2	D	501	A1I1H	N-C9-O3-C10
2	C	501	A1I1H	N3-C22-C23-C24
2	B	501	A1I1H	O2-C9-N-C8
2	B	501	A1I1H	C17-C18-C19-N1
2	D	501	A1I1H	C17-C18-C19-N1

Continued on next page...

Continued from previous page...

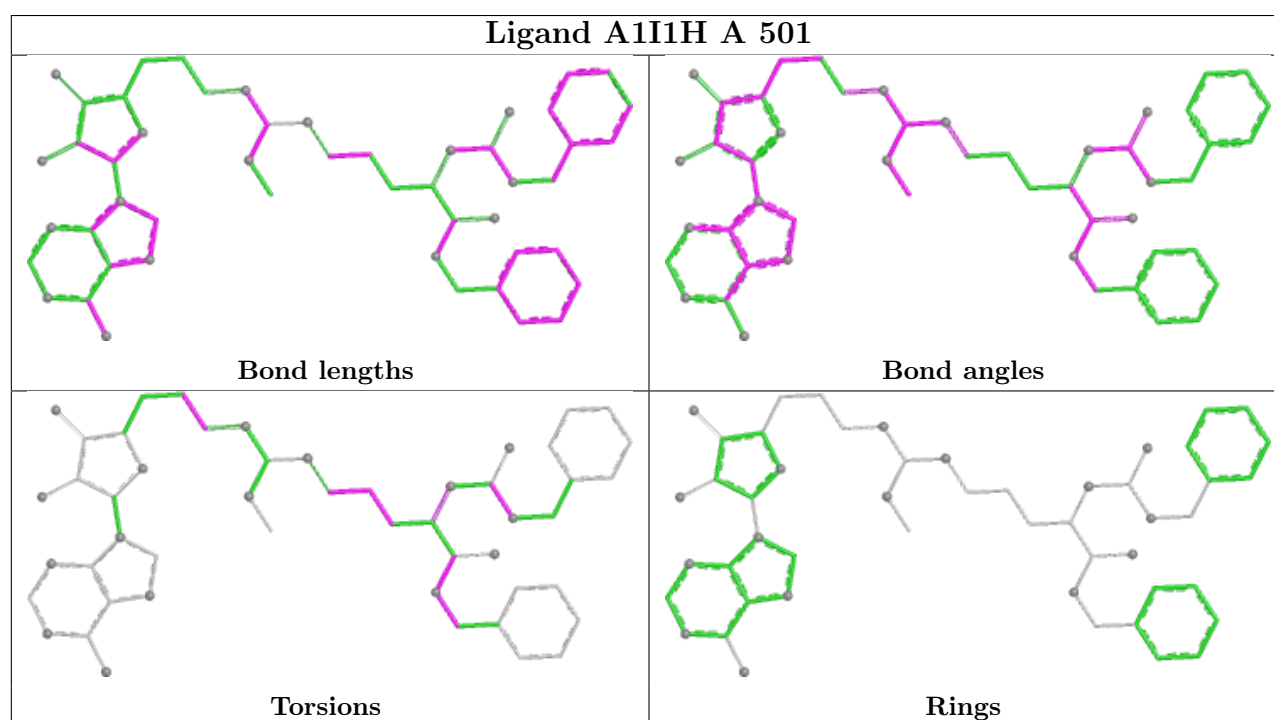
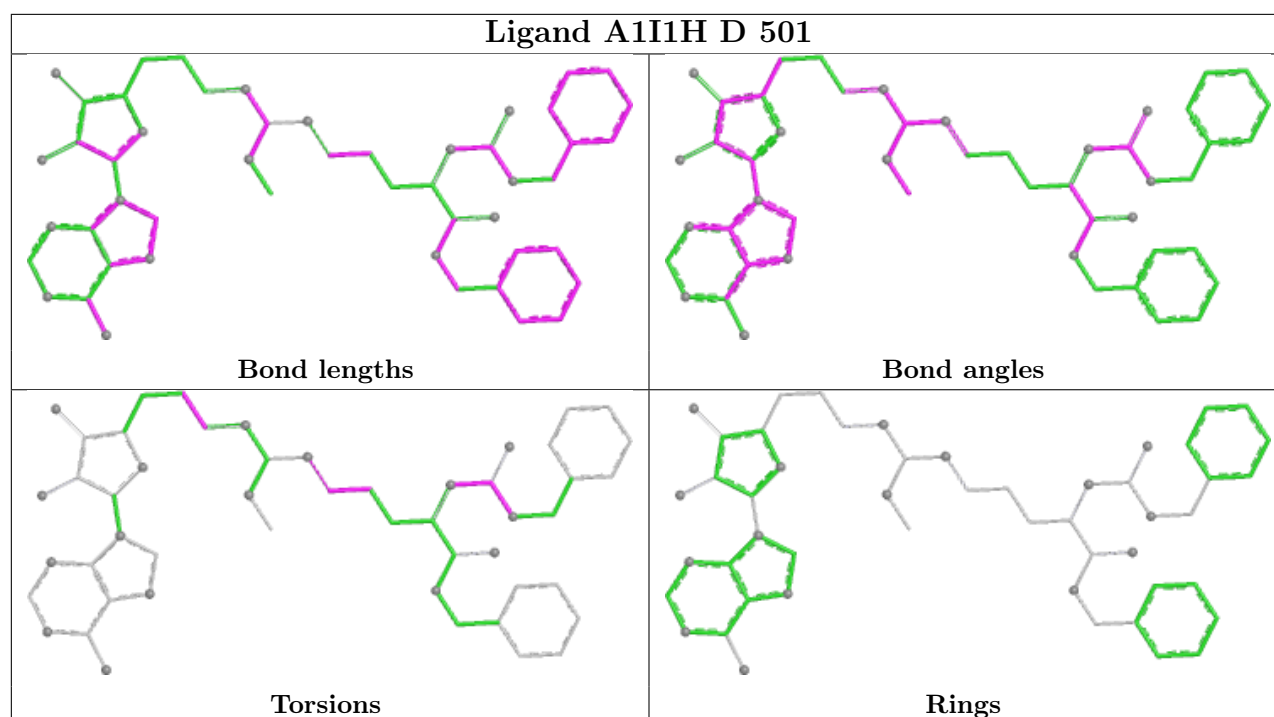
Mol	Chain	Res	Type	Atoms
2	A	501	A1I1H	N3-C22-C23-C24
2	B	501	A1I1H	C11-C10-O3-C9
2	D	501	A1I1H	O3-C9-N-C8
2	D	501	A1I1H	C18-C19-N1-C20
2	C	501	A1I1H	C22-C23-C24-C25
2	B	501	A1I1H	C23-C24-C25-O4
2	D	501	A1I1H	O2-C9-N-C8
2	A	501	A1I1H	C8-C17-C18-C19
2	D	501	A1I1H	N3-C22-C23-C24
2	A	501	A1I1H	C2-C1-O1-C

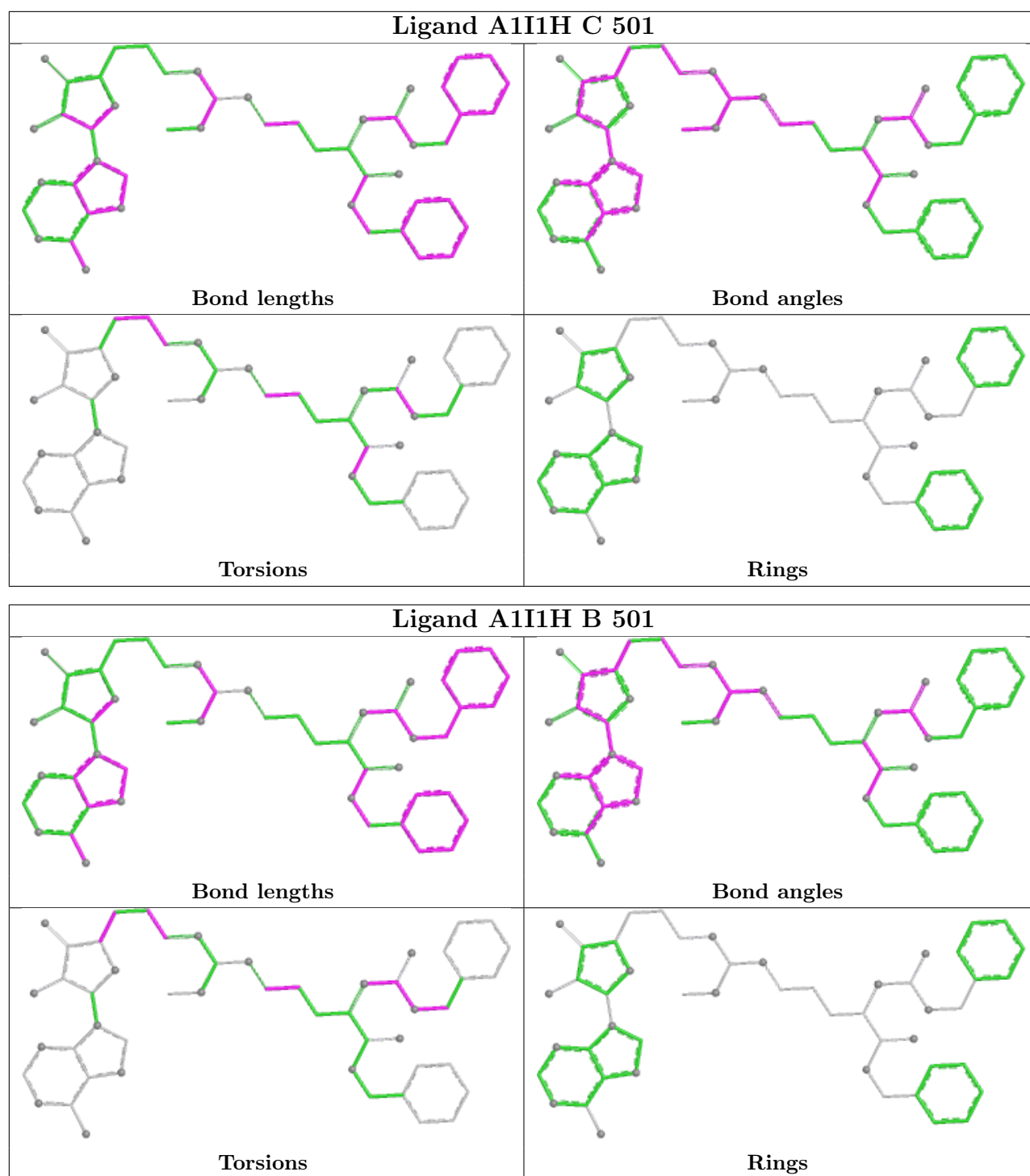
There are no ring outliers.

1 monomer is involved in 1 short contact:

Mol	Chain	Res	Type	Clashes	Symm-Clashes
2	D	501	A1I1H	1	0

The following is a two-dimensional graphical depiction of Mogul quality analysis of bond lengths, bond angles, torsion angles, and ring geometry for all instances of the Ligand of Interest. In addition, ligands with molecular weight > 250 and outliers as shown on the validation Tables will also be included. For torsion angles, if less than 5% of the Mogul distribution of torsion angles is within 10 degrees of the torsion angle in question, then that torsion angle is considered an outlier. Any bond that is central to one or more torsion angles identified as an outlier by Mogul will be highlighted in the graph. For rings, the root-mean-square deviation (RMSD) between the ring in question and similar rings identified by Mogul is calculated over all ring torsion angles. If the average RMSD is greater than 60 degrees and the minimal RMSD between the ring in question and any Mogul-identified rings is also greater than 60 degrees, then that ring is considered an outlier. The outliers are highlighted in purple. The color gray indicates Mogul did not find sufficient equivalents in the CSD to analyse the geometry.





5.7 Other polymers [i](#)

There are no such residues in this entry.

5.8 Polymer linkage issues ⓘ

There are no chain breaks in this entry.

6 Fit of model and data ⓘ

6.1 Protein, DNA and RNA chains ⓘ

In the following table, the column labelled ‘#RSRZ > 2’ contains the number (and percentage) of RSRZ outliers, followed by percent RSRZ outliers for the chain as percentile scores relative to all X-ray entries and entries of similar resolution. The OWAB column contains the minimum, median, 95th percentile and maximum values of the occupancy-weighted average B-factor per residue. The column labelled ‘Q < 0.9’ lists the number of (and percentage) of residues with an average occupancy less than 0.9.

Mol	Chain	Analysed	<RSRZ>	#RSRZ>2	OWAB(Å ²)	Q<0.9
1	A	363/371 (97%)	0.31	7 (1%) 66 63	40, 52, 69, 104	0
1	B	344/371 (92%)	0.37	9 (2%) 57 54	42, 56, 74, 105	0
1	C	362/371 (97%)	0.75	24 (6%) 24 21	66, 79, 96, 108	0
1	D	343/371 (92%)	0.88	20 (5%) 29 25	66, 80, 97, 120	0
All	All	1412/1484 (95%)	0.58	60 (4%) 40 37	40, 70, 93, 120	0

All (60) RSRZ outliers are listed below:

Mol	Chain	Res	Type	RSRZ
1	A	439	CYS	5.1
1	C	429	ALA	5.1
1	B	219	MET	4.5
1	D	262	TYR	3.9
1	C	435	LEU	3.8
1	B	315	TYR	3.6
1	C	239	ILE	3.5
1	B	428	PHE	3.1
1	D	198	ILE	3.1
1	D	178	LEU	3.0
1	D	177	ILE	3.0
1	D	477	TYR	2.8
1	C	214	VAL	2.8
1	C	348	ILE	2.8
1	D	439	CYS	2.8
1	C	373	ILE	2.7
1	D	206	ALA	2.7
1	B	164	MET	2.7
1	D	428	PHE	2.6
1	C	136	SER	2.6
1	B	312	ASN	2.6

Continued on next page...

Continued from previous page...

Mol	Chain	Res	Type	RSRZ
1	B	478	THR	2.6
1	C	350	MET	2.6
1	A	428	PHE	2.5
1	B	262	TYR	2.5
1	D	442	ILE	2.5
1	C	270	LEU	2.5
1	C	349	LEU	2.5
1	C	405	LEU	2.5
1	A	260	MET	2.5
1	A	262	TYR	2.4
1	C	170	THR	2.4
1	C	184	PHE	2.4
1	C	428	PHE	2.4
1	C	383	GLY	2.3
1	D	233	THR	2.3
1	C	265	PHE	2.3
1	D	313	PHE	2.3
1	D	254	ILE	2.3
1	D	445	LYS	2.3
1	D	449	TYR	2.2
1	A	198	ILE	2.2
1	B	293	VAL	2.2
1	D	172	THR	2.2
1	B	177	ILE	2.2
1	C	388	LEU	2.2
1	D	179	GLN	2.2
1	C	377	PHE	2.2
1	C	262	TYR	2.1
1	C	293	VAL	2.1
1	D	236	ILE	2.1
1	D	441	LEU	2.1
1	D	467	LEU	2.1
1	C	304	TYR	2.1
1	C	487	GLY	2.1
1	C	295	LEU	2.0
1	D	470	LEU	2.0
1	A	135	ARG	2.0
1	C	431	ALA	2.0
1	A	256	ILE	2.0

6.2 Non-standard residues in protein, DNA, RNA chains [i](#)

There are no non-standard protein/DNA/RNA residues in this entry.

6.3 Carbohydrates [i](#)

There are no oligosaccharides in this entry.

6.4 Ligands [i](#)

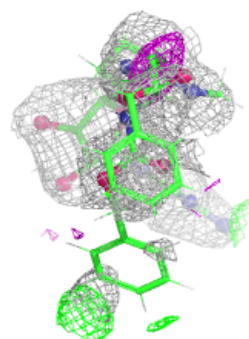
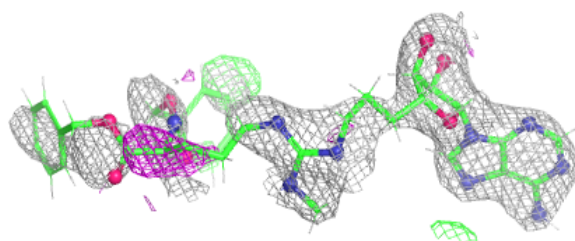
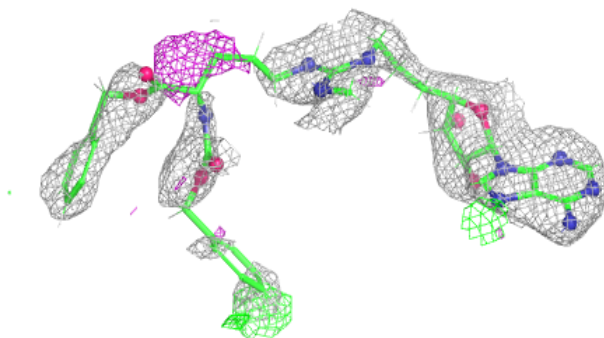
In the following table, the Atoms column lists the number of modelled atoms in the group and the number defined in the chemical component dictionary. The B-factors column lists the minimum, median, 95th percentile and maximum values of B factors of atoms in the group. The column labelled 'Q< 0.9' lists the number of atoms with occupancy less than 0.9.

Mol	Type	Chain	Res	Atoms	RSCC	RSR	B-factors(\AA^2)	Q<0.9
2	A1I1H	D	501	50/50	0.74	0.20	65,88,133,148	0
2	A1I1H	C	501	50/50	0.83	0.15	65,80,101,111	0
2	A1I1H	B	501	50/50	0.86	0.14	40,59,77,80	0
2	A1I1H	A	501	50/50	0.88	0.14	39,58,78,85	0
3	CL	A	502	1/1	0.95	0.16	69,69,69,69	0

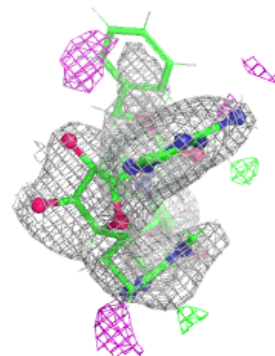
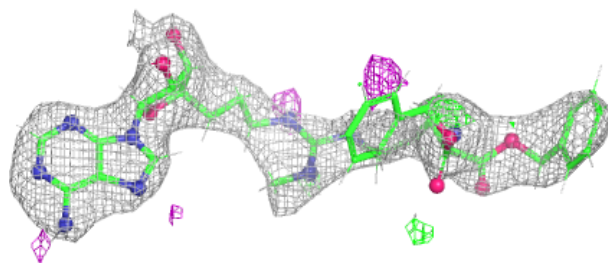
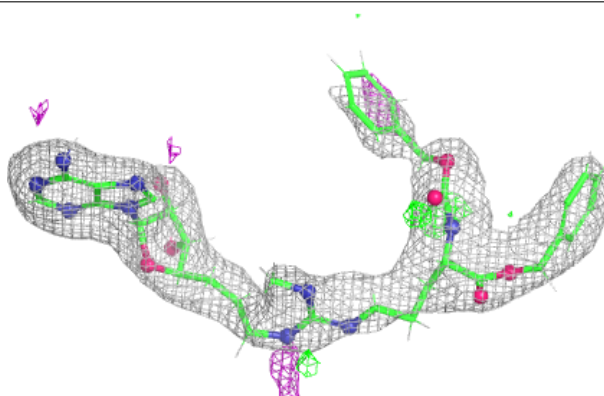
The following is a graphical depiction of the model fit to experimental electron density of all instances of the Ligand of Interest. In addition, ligands with molecular weight > 250 and outliers as shown on the geometry validation Tables will also be included. Each fit is shown from different orientation to approximate a three-dimensional view.

Electron density around A1I1H D 501:

$2mF_o-DF_c$ (at 0.7 rmsd) in gray
 mF_o-DF_c (at 3 rmsd) in purple (negative)
and green (positive)

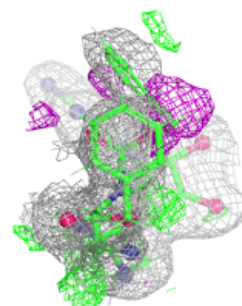
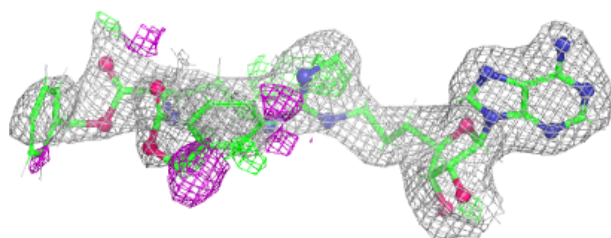
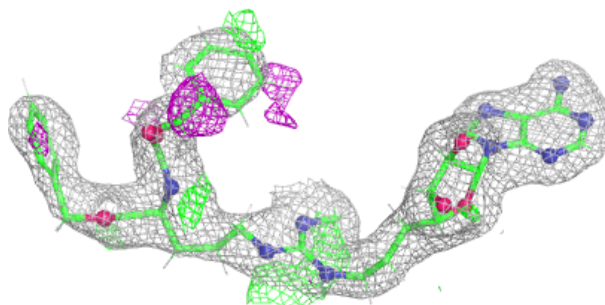
**Electron density around A1I1H C 501:**

$2mF_o-DF_c$ (at 0.7 rmsd) in gray
 mF_o-DF_c (at 3 rmsd) in purple (negative)
and green (positive)

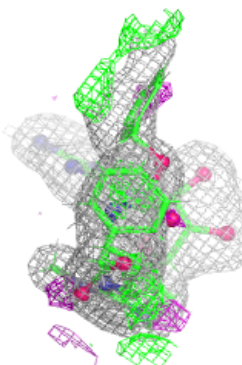
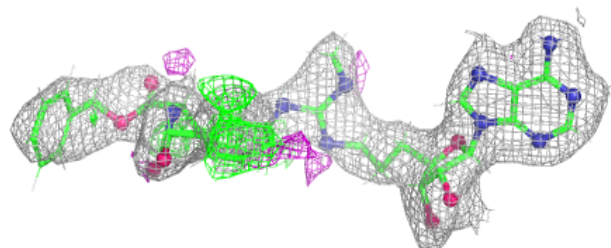
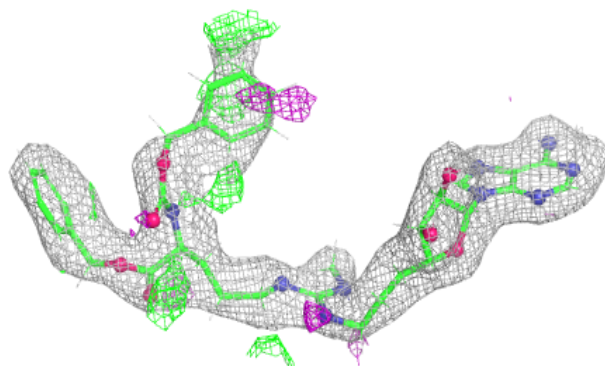


Electron density around A1I1H B 501:

$2mF_o-DF_c$ (at 0.7 rmsd) in gray
 mF_o-DF_c (at 3 rmsd) in purple (negative)
and green (positive)

**Electron density around A1I1H A 501:**

$2mF_o-DF_c$ (at 0.7 rmsd) in gray
 mF_o-DF_c (at 3 rmsd) in purple (negative)
and green (positive)



6.5 Other polymers [i](#)

There are no such residues in this entry.