



# Full wwPDB X-ray Structure Validation Report ⓘ

Apr 29, 2026 – 04:13 am BST

PDB ID : 9H6O / pdb\_00009h6o  
Title : Leishmania major ISP2 in complex with bovine alpha-chymotrypsin  
Authors : Freitag-Pohl, S.; Pohl, E.  
Deposited on : 2024-10-24  
Resolution : 1.80 Å(reported)

This is a Full wwPDB X-ray Structure Validation Report for a publicly released PDB entry.

We welcome your comments at [validation@mail.wwpdb.org](mailto:validation@mail.wwpdb.org)

A user guide is available at

<https://www.wwpdb.org/validation/2017/XrayValidationReportHelp>

with specific help available everywhere you see the ⓘ symbol.

The types of validation reports are described at

<http://www.wwpdb.org/validation/2017/FAQs#types>.

---

The following versions of software and data (see [references ⓘ](#)) were used in the production of this report:

MolProbity	:	4-5-2 with Phenix2.0
Mogul	:	1.8.4, CSD as541be (2020)
Xtriage (Phenix)	:	2.0
EDS	:	3.0
Percentile statistics	:	20250101.v01 (using entries in the PDB archive January 1st 2025)
CCP4	:	9.0.010 (Gargrove)
Density-Fitness	:	1.0.12
Ideal geometry (proteins)	:	Engh & Huber (2001)
Ideal geometry (DNA, RNA)	:	Parkinson et al. (1996)
Validation Pipeline (wwPDB-VP)	:	2.49

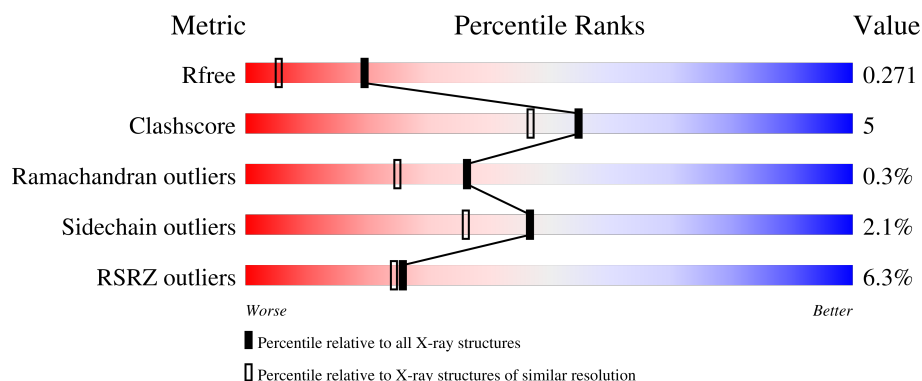
# 1 Overall quality at a glance i

The following experimental techniques were used to determine the structure:

*X-RAY DIFFRACTION*

The reported resolution of this entry is 1.80 Å.

Percentile scores (ranging between 0-100) for global validation metrics of the entry are shown in the following graphic. The table shows the number of entries on which the scores are based.



Metric	Whole archive (#Entries)	Similar resolution (#Entries, resolution range(Å))
$R_{free}$	180053	7662 (1.80-1.80)
Clashscore	190562	8479 (1.80-1.80)
Ramachandran outliers	187476	8391 (1.80-1.80)
Sidechain outliers	187428	8390 (1.80-1.80)
RSRZ outliers	180081	7663 (1.80-1.80)

The table below summarises the geometric issues observed across the polymeric chains and their fit to the electron density. The red, orange, yellow and green segments of the lower bar indicate the fraction of residues that contain outliers for  $\geq 3$ , 2, 1 and 0 types of geometric quality criteria respectively. A grey segment represents the fraction of residues that are not modelled. The numeric value for each fraction is indicated below the corresponding segment, with a dot representing fractions  $\leq 5\%$ . The upper red bar (where present) indicates the fraction of residues that have poor fit to the electron density. The numeric value is given above the bar.

Mol	Chain	Length	Quality of chain
1	B	245	<div> <div>6%</div> <div>92%</div> <div>• •</div> </div>
1	D	245	<div> <div>%</div> <div>92%</div> <div>5% •</div> </div>
2	A	158	<div> <div>10%</div> <div>72%</div> <div>9% • 16%</div> </div>
2	C	158	<div> <div>8%</div> <div>65%</div> <div>17% •• 16%</div> </div>

## 2 Entry composition [i](#)

There are 6 unique types of molecules in this entry. The entry contains 11110 atoms, of which 5387 are hydrogens and 0 are deuteriums.

In the tables below, the ZeroOcc column contains the number of atoms modelled with zero occupancy, the AltConf column contains the number of residues with at least one atom in alternate conformation and the Trace column contains the number of residues modelled with at most 2 atoms.

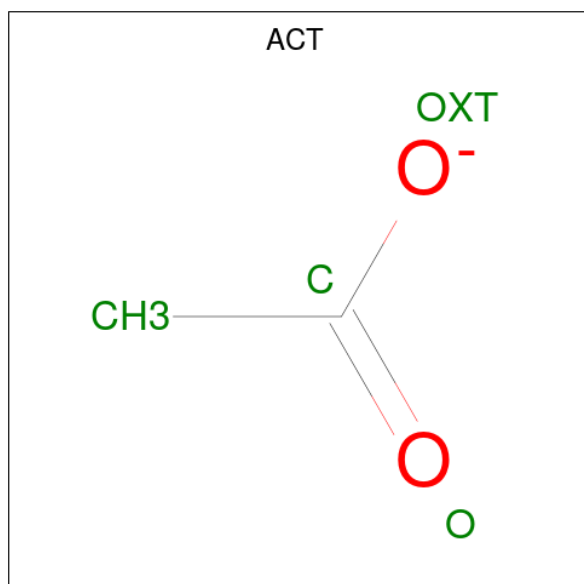
- Molecule 1 is a protein called Chymotrypsinogen A.

Mol	Chain	Residues	Atoms						ZeroOcc	AltConf	Trace
1	D	240	Total	C	H	N	O	S	84	6	0
			3459	1099	1716	292	340	12			
1	B	237	Total	C	H	N	O	S	92	3	0
			3327	1062	1642	281	330	12			

- Molecule 2 is a protein called Ecotin-like protein 2.

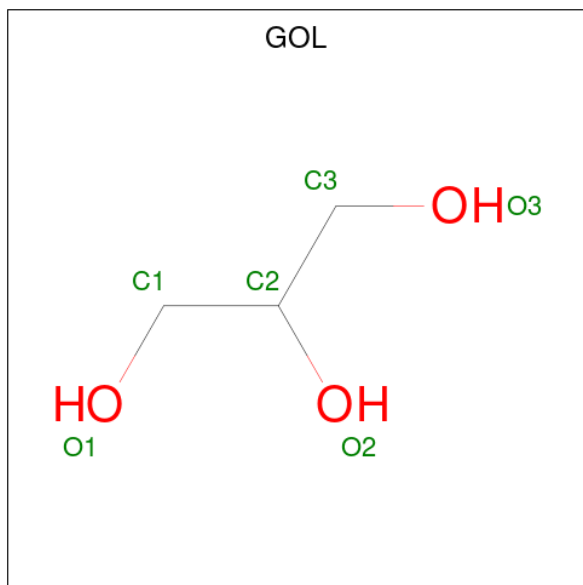
Mol	Chain	Residues	Atoms						ZeroOcc	AltConf	Trace
2	C	132	Total	C	H	N	O	S	56	2	0
			2060	661	1022	177	193	7			
2	A	132	Total	C	H	N	O	S	66	0	0
			1958	640	957	166	188	7			

- Molecule 3 is ACETATE ION (CCD ID: ACT) (formula: C<sub>2</sub>H<sub>3</sub>O<sub>2</sub>).



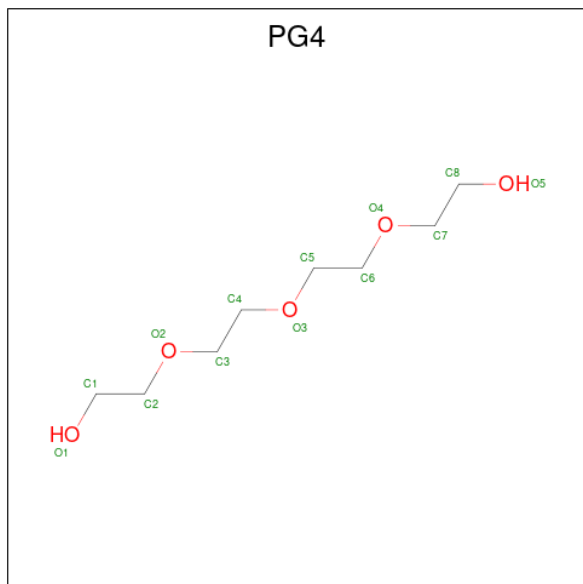
Mol	Chain	Residues	Atoms				ZeroOcc	AltConf
3	D	1	Total	C	H	O	3	0
			7	2	3	2		
3	D	1	Total	C	H	O	3	0
			7	2	3	2		

- Molecule 4 is GLYCEROL (CCD ID: GOL) (formula:  $C_3H_8O_3$ ).



Mol	Chain	Residues	Atoms				ZeroOcc	AltConf
4	D	1	Total	C	H	O	3	0
			14	3	8	3		

- Molecule 5 is TETRAETHYLENE GLYCOL (CCD ID: PG4) (formula:  $C_8H_{18}O_5$ ).



Mol	Chain	Residues	Atoms				ZeroOcc	AltConf
5	C	1	Total	C	H	O	2	0
			31	8	18	5		
5	A	1	Total	C	H	O	2	0
			31	8	18	5		

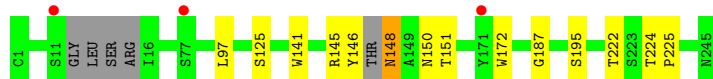
- Molecule 6 is water.

Mol	Chain	Residues	Atoms		ZeroOcc	AltConf
6	D	92	Total	O	0	0
			92	92		
6	B	58	Total	O	0	0
			58	58		
6	C	33	Total	O	0	0
			33	33		
6	A	33	Total	O	0	0
			33	33		

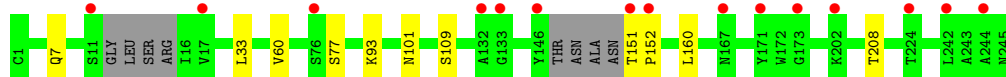
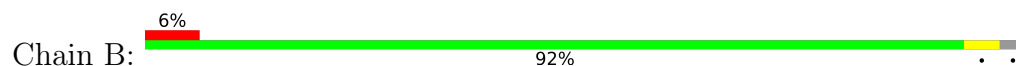
### 3 Residue-property plots [i](#)

These plots are drawn for all protein, RNA, DNA and oligosaccharide chains in the entry. The first graphic for a chain summarises the proportions of the various outlier classes displayed in the second graphic. The second graphic shows the sequence view annotated by issues in geometry and electron density. Residues are color-coded according to the number of geometric quality criteria for which they contain at least one outlier: green = 0, yellow = 1, orange = 2 and red = 3 or more. A red dot above a residue indicates a poor fit to the electron density ( $RSRZ > 2$ ). Stretches of 2 or more consecutive residues without any outlier are shown as a green connector. Residues present in the sample, but not in the model, are shown in grey.

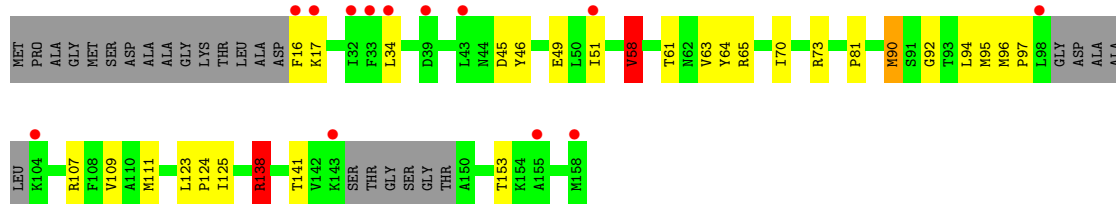
- Molecule 1: Chymotrypsinogen A



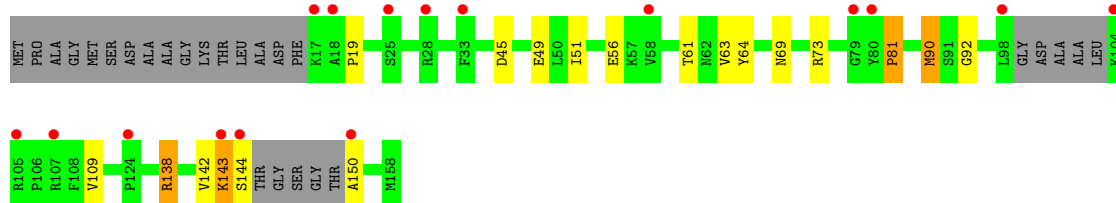
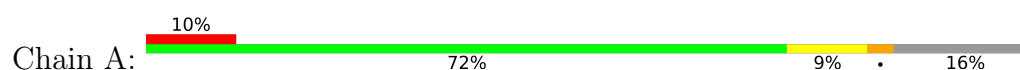
- Molecule 1: Chymotrypsinogen A



- Molecule 2: Ecotin-like protein 2



- Molecule 2: Ecotin-like protein 2



## 4 Data and refinement statistics

Property	Value	Source
Space group	P 21 21 21	Depositor
Cell constants a, b, c, $\alpha$ , $\beta$ , $\gamma$	85.83Å 86.78Å 96.69Å 90.00° 90.00° 90.00°	Depositor
Resolution (Å)	64.27 – 1.80 64.27 – 1.80	Depositor EDS
% Data completeness (in resolution range)	99.9 (64.27-1.80) 99.9 (64.27-1.80)	Depositor EDS
$R_{merge}$	0.10	Depositor
$R_{sym}$	(Not available)	Depositor
$\langle I/\sigma(I) \rangle$ <sup>1</sup>	1.90 (at 1.80Å)	Xtriage
Refinement program	REFMAC 5.8.0425	Depositor
R, $R_{free}$	0.219 , 0.268 0.223 , 0.271	Depositor DCC
$R_{free}$ test set	3468 reflections (5.13%)	wwPDB-VP
Wilson B-factor (Å <sup>2</sup> )	31.4	Xtriage
Anisotropy	0.216	Xtriage
Bulk solvent $k_{sol}$ (e/Å <sup>3</sup> ), $B_{sol}$ (Å <sup>2</sup> )	0.39 , 41.1	EDS
L-test for twinning <sup>2</sup>	$\langle  L  \rangle = 0.48$ , $\langle L^2 \rangle = 0.31$	Xtriage
Estimated twinning fraction	0.026 for k,h,-l	Xtriage
$F_o, F_c$ correlation	0.95	EDS
Total number of atoms	11110	wwPDB-VP
Average B, all atoms (Å <sup>2</sup> )	40.0	wwPDB-VP

Xtriage's analysis on translational NCS is as follows: *The largest off-origin peak in the Patterson function is 4.17% of the height of the origin peak. No significant pseudotranslation is detected.*

<sup>1</sup>Intensities estimated from amplitudes.

<sup>2</sup>Theoretical values of  $\langle |L| \rangle$ ,  $\langle L^2 \rangle$  for acentric reflections are 0.5, 0.333 respectively for untwinned datasets, and 0.375, 0.2 for perfectly twinned datasets.

## 5 Model quality

### 5.1 Standard geometry

Bond lengths and bond angles in the following residue types are not validated in this section: PG4, ACT, GOL

The Z score for a bond length (or angle) is the number of standard deviations the observed value is removed from the expected value. A bond length (or angle) with  $|Z| > 5$  is considered an outlier worth inspection. RMSZ is the root-mean-square of all Z scores of the bond lengths (or angles).

Mol	Chain	Bond lengths		Bond angles	
		RMSZ	$\# Z  > 5$	RMSZ	$\# Z  > 5$
1	B	0.67	0/1727	0.99	1/2368 (0.0%)
1	D	0.67	0/1796	1.03	1/2458 (0.0%)
2	A	0.63	0/1024	1.17	2/1395 (0.1%)
2	C	0.65	0/1067	1.17	5/1453 (0.3%)
All	All	0.66	0/5614	1.07	9/7674 (0.1%)

Chiral center outliers are detected by calculating the chiral volume of a chiral center and verifying if the center is modelled as a planar moiety or with the opposite hand. A planarity outlier is detected by checking planarity of atoms in a peptide group, atoms in a mainchain group or atoms of a sidechain that are expected to be planar.

Mol	Chain	#Chirality outliers	#Planarity outliers
2	A	0	1
2	C	0	2
All	All	0	3

There are no bond length outliers.

All (9) bond angle outliers are listed below:

Mol	Chain	Res	Type	Atoms	Z	Observed(°)	Ideal(°)
2	C	96	MET	CG-SD-CE	10.13	123.19	100.90
2	A	90	MET	CG-SD-CE	7.59	117.59	100.90
2	C	138	ARG	CD-NE-CZ	6.97	134.16	124.40
1	D	146	TYR	CA-C-O	-6.91	109.05	120.80
2	A	19	PRO	N-CA-CB	-6.30	98.36	102.65
1	B	208	THR	CA-CB-OG1	-6.04	100.54	109.60
2	C	90	MET	CG-SD-CE	5.62	113.27	100.90
2	C	138	ARG	NE-CZ-NH2	-5.33	114.41	119.20
2	C	58	VAL	N-CA-CB	-5.28	102.59	112.36



There are no chirality outliers.

All (3) planarity outliers are listed below:

Mol	Chain	Res	Type	Group
2	A	138	ARG	Sidechain
2	C	107	ARG	Sidechain
2	C	138	ARG	Sidechain

## 5.2 Too-close contacts

In the following table, the Non-H and H(model) columns list the number of non-hydrogen atoms and hydrogen atoms in the chain respectively. The H(added) column lists the number of hydrogen atoms added and optimized by MolProbity. The Clashes column lists the number of clashes within the asymmetric unit, whereas Symm-Clashes lists symmetry-related clashes.

Mol	Chain	Non-H	H(model)	H(added)	Clashes	Symm-Clashes
1	B	1685	1642	1600	4	0
1	D	1743	1716	1682	12	0
2	A	1001	957	913	12	0
2	C	1038	1022	991	28	0
3	D	8	6	6	0	0
4	D	6	8	8	0	0
5	A	13	18	18	1	0
5	C	13	18	18	0	0
6	A	33	0	0	0	0
6	B	58	0	0	1	0
6	C	33	0	0	2	0
6	D	92	0	0	1	0
All	All	5723	5387	5236	52	0

The all-atom clashscore is defined as the number of clashes found per 1000 atoms (including hydrogen atoms). The all-atom clashscore for this structure is 5.

All (52) close contacts within the same asymmetric unit are listed below, sorted by their clash magnitude.

Atom-1	Atom-2	Interatomic distance (Å)	Clash overlap (Å)
2:C:90:MET:HE3	2:C:109:VAL:HG21	1.58	0.85
2:A:90:MET:HE3	2:A:109:VAL:HG21	1.61	0.82
2:A:90:MET:CE	2:A:109:VAL:HG21	2.14	0.77
2:C:90:MET:CE	2:C:109:VAL:HG21	2.19	0.72
1:D:148:ASN:HB2	1:D:150:ASN:H	1.55	0.72
2:C:46:TYR:CD2	2:C:141[B]:THR:HG22	2.34	0.62

*Continued on next page...*

*Continued from previous page...*

Atom-1	Atom-2	Interatomic distance (Å)	Clash overlap (Å)
1:D:172:TRP:CZ2	1:D:224[A]:THR:HG21	2.36	0.61
1:B:93:LYS:HE2	1:B:101[A]:ASN:HD21	1.66	0.61
2:C:125:ILE:HD11	6:C:324:HOH:O	2.00	0.61
1:D:97:LEU:HD22	2:C:65:ARG:NH2	2.17	0.60
2:C:61:THR:CG2	2:C:97:PRO:HB3	2.32	0.59
2:A:64:TYR:HB3	2:A:90:MET:HE2	1.83	0.59
1:D:148:ASN:OD1	1:D:148:ASN:N	2.39	0.55
2:C:61:THR:HG21	2:C:97:PRO:HB3	1.90	0.54
1:D:97:LEU:HD22	2:C:65:ARG:HH21	1.73	0.54
1:B:33:LEU:HD13	1:B:60:VAL:HG21	1.91	0.53
1:D:195:SER:OG	2:C:94:LEU:C	2.52	0.52
2:C:58:VAL:HG21	2:C:90:MET:CE	2.41	0.51
2:C:45:ASP:OD1	2:A:138:ARG:NH2	2.41	0.51
2:C:46:TYR:CE2	2:C:141[B]:THR:CG2	2.94	0.50
2:A:51:ILE:HD11	2:A:138:ARG:HD2	1.93	0.50
2:C:70:ILE:HG13	2:C:111:MET:HE1	1.93	0.50
2:C:90:MET:HE3	2:C:109:VAL:HG11	1.93	0.50
2:A:45:ASP:OD2	2:A:150:ALA:HB2	2.14	0.48
2:A:51:ILE:HD11	2:A:138:ARG:CD	2.45	0.47
1:B:151:THR:N	1:B:152:PRO:HD2	2.30	0.47
2:C:61:THR:HG22	2:C:97:PRO:HB3	1.97	0.47
1:B:7:GLN:NE2	6:B:305:HOH:O	2.47	0.46
2:C:46:TYR:CE2	2:C:141[B]:THR:HG21	2.51	0.46
1:D:148:ASN:HB3	6:D:473:HOH:O	2.14	0.46
2:C:16:PHE:N	6:C:306:HOH:O	2.49	0.46
2:C:64:TYR:HB3	2:C:90:MET:HE2	1.97	0.46
2:C:125:ILE:HD12	2:C:125:ILE:N	2.31	0.45
2:C:49:GLU:CD	5:A:201:PG4:H72	2.41	0.45
2:A:73:ARG:O	2:A:81:PRO:HA	2.16	0.45
1:D:141:TRP:O	1:D:151:THR:HB	2.17	0.45
1:D:145:ARG:O	1:D:148:ASN:OD1	2.33	0.45
2:A:142:VAL:O	2:A:143:LYS:C	2.58	0.45
2:C:58:VAL:HG21	2:C:90:MET:HE1	2.00	0.43
1:D:172:TRP:CZ2	1:D:224[A]:THR:CG2	3.02	0.42
2:C:34:LEU:HD11	2:C:125:ILE:HD11	2.01	0.42
2:A:49:GLU:OE1	2:A:138:ARG:HD3	2.20	0.42
2:A:63:VAL:O	2:A:92:GLY:HA2	2.20	0.42
2:C:123:LEU:HA	2:C:124:PRO:HD2	1.86	0.41
2:A:143:LYS:O	2:A:144:SER:CB	2.67	0.41
2:C:90:MET:HE3	2:C:109:VAL:CG2	2.40	0.41
1:D:224[A]:THR:CG2	1:D:225:PRO:HD2	2.50	0.41

*Continued on next page...*

Continued from previous page...

Atom-1	Atom-2	Interatomic distance (Å)	Clash overlap (Å)
2:C:51:ILE:HD11	2:C:138:ARG:CD	2.50	0.41
2:C:125:ILE:HD12	2:C:125:ILE:H	1.84	0.41
2:C:63:VAL:O	2:C:92:GLY:HA2	2.21	0.40
1:D:187:GLY:C	1:D:222:THR:HB	2.47	0.40
2:C:73:ARG:O	2:C:81:PRO:HA	2.22	0.40

There are no symmetry-related clashes.

## 5.3 Torsion angles [i](#)

### 5.3.1 Protein backbone [i](#)

In the following table, the Percentiles column shows the percent Ramachandran outliers of the chain as a percentile score with respect to all X-ray entries followed by that with respect to entries of similar resolution.

The Analysed column shows the number of residues for which the backbone conformation was analysed, and the total number of residues.

Mol	Chain	Analysed	Favoured	Allowed	Outliers	Percentiles	
1	B	234/245 (96%)	229 (98%)	5 (2%)	0	100	100
1	D	240/245 (98%)	235 (98%)	5 (2%)	0	100	100
2	A	126/158 (80%)	123 (98%)	2 (2%)	1 (1%)	16	6
2	C	128/158 (81%)	126 (98%)	1 (1%)	1 (1%)	16	6
All	All	728/806 (90%)	713 (98%)	13 (2%)	2 (0%)	36	25

All (2) Ramachandran outliers are listed below:

Mol	Chain	Res	Type
2	A	143	LYS
2	C	17	LYS

### 5.3.2 Protein sidechains [i](#)

In the following table, the Percentiles column shows the percent sidechain outliers of the chain as a percentile score with respect to all X-ray entries followed by that with respect to entries of similar resolution.

The Analysed column shows the number of residues for which the sidechain conformation was

analysed, and the total number of residues.

Mol	Chain	Analysed	Rotameric	Outliers	Percentiles	
1	B	178/200 (89%)	175 (98%)	3 (2%)	53	45
1	D	188/200 (94%)	186 (99%)	2 (1%)	65	60
2	A	97/134 (72%)	93 (96%)	4 (4%)	27	15
2	C	107/134 (80%)	104 (97%)	3 (3%)	38	26
All	All	570/668 (85%)	558 (98%)	12 (2%)	47	36

All (12) residues with a non-rotameric sidechain are listed below:

Mol	Chain	Res	Type
1	D	125	SER
1	D	148	ASN
1	B	77	SER
1	B	109	SER
1	B	160	LEU
2	C	58	VAL
2	C	95	MET
2	C	153	THR
2	A	56	GLU
2	A	61	THR
2	A	69	ASN
2	A	81	PRO

Sometimes sidechains can be flipped to improve hydrogen bonding and reduce clashes. All (3) such sidechains are listed below:

Mol	Chain	Res	Type
1	D	34	GLN
1	B	34	GLN
2	C	44	ASN

### 5.3.3 RNA ⓘ

There are no RNA molecules in this entry.

## 5.4 Non-standard residues in protein, DNA, RNA chains ⓘ

There are no non-standard protein/DNA/RNA residues in this entry.

## 5.5 Carbohydrates [i](#)

There are no oligosaccharides in this entry.

## 5.6 Ligand geometry [i](#)

5 ligands are modelled in this entry.

In the following table, the Counts columns list the number of bonds (or angles) for which Mogul statistics could be retrieved, the number of bonds (or angles) that are observed in the model and the number of bonds (or angles) that are defined in the Chemical Component Dictionary. The Link column lists molecule types, if any, to which the group is linked. The Z score for a bond length (or angle) is the number of standard deviations the observed value is removed from the expected value. A bond length (or angle) with  $|Z| > 2$  is considered an outlier worth inspection. RMSZ is the root-mean-square of all Z scores of the bond lengths (or angles).

Mol	Type	Chain	Res	Link	Bond lengths			Bond angles		
					Counts	RMSZ	$\# Z  > 2$	Counts	RMSZ	$\# Z  > 2$
3	ACT	D	303	-	3,3,3	1.00	0	3,3,3	0.83	0
3	ACT	D	301	-	3,3,3	0.93	0	3,3,3	0.76	0
4	GOL	D	302	-	5,5,5	0.28	0	5,5,5	0.48	0
5	PG4	A	201	-	12,12,12	0.29	0	11,11,11	0.22	0
5	PG4	C	201	-	12,12,12	0.34	0	11,11,11	0.34	0

In the following table, the Chirals column lists the number of chiral outliers, the number of chiral centers analysed, the number of these observed in the model and the number defined in the Chemical Component Dictionary. Similar counts are reported in the Torsion and Rings columns. '-' means no outliers of that kind were identified.

Mol	Type	Chain	Res	Link	Chirals	Torsions	Rings
5	PG4	C	201	-	-	3/10/10/10	-
4	GOL	D	302	-	-	1/4/4/4	-
5	PG4	A	201	-	-	2/10/10/10	-

There are no bond length outliers.

There are no bond angle outliers.

There are no chirality outliers.

All (6) torsion outliers are listed below:

Mol	Chain	Res	Type	Atoms
5	A	201	PG4	O1-C1-C2-O2
4	D	302	GOL	O1-C1-C2-C3

*Continued on next page...*

*Continued from previous page...*

Mol	Chain	Res	Type	Atoms
5	A	201	PG4	O2-C3-C4-O3
5	C	201	PG4	O1-C1-C2-O2
5	C	201	PG4	C8-C7-O4-C6
5	C	201	PG4	O4-C7-C8-O5

There are no ring outliers.

1 monomer is involved in 1 short contact:

Mol	Chain	Res	Type	Clashes	Symm-Clashes
5	A	201	PG4	1	0

## 5.7 Other polymers [i](#)

There are no such residues in this entry.

## 5.8 Polymer linkage issues [i](#)

There are no chain breaks in this entry.

## 6 Fit of model and data ⓘ

### 6.1 Protein, DNA and RNA chains ⓘ

In the following table, the column labelled ‘#RSRZ> 2’ contains the number (and percentage) of RSRZ outliers, followed by percent RSRZ outliers for the chain as percentile scores relative to all X-ray entries and entries of similar resolution. The OWAB column contains the minimum, median, 95<sup>th</sup> percentile and maximum values of the occupancy-weighted average B-factor per residue. The column labelled ‘Q< 0.9’ lists the number of (and percentage) of residues with an average occupancy less than 0.9.

Mol	Chain	Analysed	<RSRZ>	#RSRZ>2	OWAB(Å <sup>2</sup> )	Q<0.9
1	B	237/245 (96%)	0.57	15 (6%) 26 24	16, 38, 56, 69	3 (1%)
1	D	240/245 (97%)	0.34	3 (1%) 75 75	15, 34, 50, 68	8 (3%)
2	A	132/158 (83%)	0.83	16 (12%) 8 7	26, 41, 56, 63	0
2	C	132/158 (83%)	0.72	13 (9%) 13 11	17, 39, 54, 70	2 (1%)
All	All	741/806 (91%)	0.57	47 (6%) 26 24	15, 38, 54, 70	13 (1%)

All (47) RSRZ outliers are listed below:

Mol	Chain	Res	Type	RSRZ
2	A	98	LEU	4.7
2	C	16	PHE	4.4
1	B	146	TYR	4.3
2	A	144	SER	3.8
2	C	98	LEU	3.6
2	A	104	LYS	3.6
1	B	151	THR	3.5
1	B	152	PRO	3.2
1	B	202	LYS	3.1
2	A	18	ALA	3.1
1	B	171	TYR	3.0
2	A	33	PHE	3.0
2	C	39	ASP	3.0
2	C	158	MET	2.8
2	C	143	LYS	2.7
1	D	11	SER	2.7
2	A	79	GLY	2.7
2	C	104	LYS	2.7
2	A	17	LYS	2.7
2	A	150	ALA	2.6
2	A	80	TYR	2.6

*Continued on next page...*

*Continued from previous page...*

Mol	Chain	Res	Type	RSRZ
2	C	34	LEU	2.5
1	B	244	ALA	2.5
2	C	155	ALA	2.5
2	C	33	PHE	2.4
1	D	77	SER	2.4
1	B	167	ASN	2.4
2	A	124	PRO	2.3
2	A	58	VAL	2.3
2	A	143	LYS	2.3
1	B	11	SER	2.3
2	A	105	ARG	2.2
1	B	173	GLY	2.2
1	B	242	LEU	2.2
1	B	133	GLY	2.2
2	A	28	ARG	2.2
1	B	224	THR	2.1
2	A	107	ARG	2.1
2	A	25	SER	2.1
1	B	17	VAL	2.1
2	C	17	LYS	2.1
1	D	171	TYR	2.1
1	B	76	SER	2.1
2	C	43	LEU	2.1
1	B	132	ALA	2.1
2	C	32	ILE	2.0
2	C	51	ILE	2.0

## 6.2 Non-standard residues in protein, DNA, RNA chains [i](#)

There are no non-standard protein/DNA/RNA residues in this entry.

## 6.3 Carbohydrates [i](#)

There are no oligosaccharides in this entry.

## 6.4 Ligands [i](#)

In the following table, the Atoms column lists the number of modelled atoms in the group and the number defined in the chemical component dictionary. The B-factors column lists the minimum, median, 95<sup>th</sup> percentile and maximum values of B factors of atoms in the group. The column labelled 'Q< 0.9' lists the number of atoms with occupancy less than 0.9.



Mol	Type	Chain	Res	Atoms	RSCC	RSR	B-factors( $\text{\AA}^2$ )	Q<0.9
4	GOL	D	302	6/6	0.82	0.13	41,49,56,58	3
5	PG4	C	201	13/13	0.88	0.12	45,50,59,60	2
3	ACT	D	301	4/4	0.90	0.11	49,53,59,61	3
3	ACT	D	303	4/4	0.91	0.12	50,67,72,73	3
5	PG4	A	201	13/13	0.93	0.10	43,50,60,63	2

## 6.5 Other polymers [i](#)

There are no such residues in this entry.