



wwPDB X-ray Structure Validation Summary Report ⓘ

Apr 15, 2026 – 12:41 AM UTC

PDB ID : 25HL / pdb_000025hl
Title : SFX crystal structure of insulin detemir
Authors : Ayan, E.; Shankar, M.K.
Deposited on : 2026-04-03
Resolution : 2.85 Å(reported)

This is a wwPDB X-ray Structure Validation Summary Report for a publicly released PDB entry.

We welcome your comments at validation@mail.wwpdb.org

A user guide is available at

<https://www.wwpdb.org/validation/2017/XrayValidationReportHelp>

with specific help available everywhere you see the ⓘ symbol.

The types of validation reports are described at

<http://www.wwpdb.org/validation/2017/FAQs#types>.

The following versions of software and data (see [references ⓘ](#)) were used in the production of this report:

MolProbity	:	4-5-2 with Phenix2.0
Mogul	:	2022.3.0, CSD as543be (2022)
Xtriage (Phenix)	:	2.0
EDS	:	3.0
Percentile statistics	:	20250101.v01 (using entries in the PDB archive January 1st 2025)
CCP4	:	9.0.010 (Gargrove)
Density-Fitness	:	1.0.12
Ideal geometry (proteins)	:	Engh & Huber (2001)
Ideal geometry (DNA, RNA)	:	Parkinson et al. (1996)
Validation Pipeline (wwPDB-VP)	:	2.49

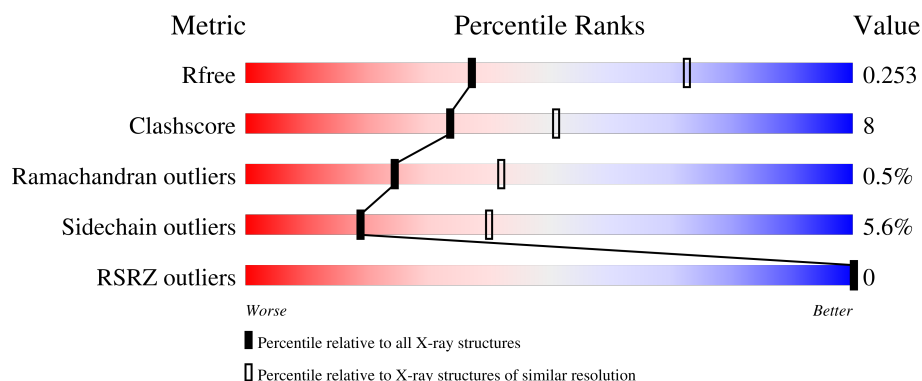
1 Overall quality at a glance

The following experimental techniques were used to determine the structure:

X-RAY DIFFRACTION

The reported resolution of this entry is 2.85 Å.

Percentile scores (ranging between 0-100) for global validation metrics of the entry are shown in the following graphic. The table shows the number of entries on which the scores are based.






Metric	Whole archive (#Entries)	Similar resolution (#Entries, resolution range(Å))
R_{free}	180053	1407 (2.88-2.84)
Clashscore	190562	1446 (2.88-2.84)
Ramachandran outliers	187476	1406 (2.88-2.84)
Sidechain outliers	187428	1407 (2.88-2.84)
RSRZ outliers	180081	1408 (2.88-2.84)

The table below summarises the geometric issues observed across the polymeric chains and their fit to the electron density. The red, orange, yellow and green segments of the lower bar indicate the fraction of residues that contain outliers for ≥ 3 , 2, 1 and 0 types of geometric quality criteria respectively. A grey segment represents the fraction of residues that are not modelled. The numeric value for each fraction is indicated below the corresponding segment, with a dot representing fractions $\leq 5\%$. The upper red bar (where present) indicates the fraction of residues that have poor fit to the electron density. The numeric value is given above the bar.

Mol	Chain	Length	Quality of chain
1	A	21	 81% 19%
1	C	21	 95% 5%
1	E	21	 86% 14%
1	G	21	 81% 19%
2	B	29	 76% 24%

Continued on next page...

Continued from previous page...

Mol	Chain	Length	Quality of chain
2	D	29	 79% 10% 10%
2	F	29	 79% 21%
2	H	29	 83% 17%

2 Entry composition

There are 7 unique types of molecules in this entry. The entry contains 1762 atoms, of which 0 are hydrogens and 0 are deuteriums.

In the tables below, the ZeroOcc column contains the number of atoms modelled with zero occupancy, the AltConf column contains the number of residues with at least one atom in alternate conformation and the Trace column contains the number of residues modelled with at most 2 atoms.

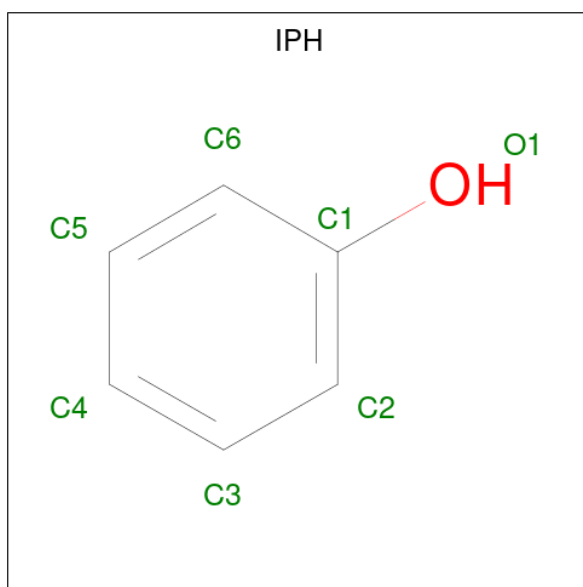
- Molecule 1 is a protein called Insulin A chain.

Mol	Chain	Residues	Atoms					ZeroOcc	AltConf	Trace
1	A	21	Total	C	N	O	S	0	0	0
			163	99	25	35	4			
1	C	21	Total	C	N	O	S	0	0	0
			163	99	25	35	4			
1	E	21	Total	C	N	O	S	0	0	0
			163	99	25	35	4			
1	G	21	Total	C	N	O	S	0	1	0
			166	102	25	35	4			

- Molecule 2 is a protein called Insulin B chain.

Mol	Chain	Residues	Atoms					ZeroOcc	AltConf	Trace
2	B	29	Total	C	N	O	S	0	2	0
			242	158	42	40	2			
2	D	29	Total	C	N	O	S	0	1	0
			238	157	39	40	2			
2	F	29	Total	C	N	O	S	0	1	0
			238	157	39	40	2			
2	H	29	Total	C	N	O	S	0	1	0
			237	156	39	40	2			

- Molecule 3 is PHENOL (CCD ID: IPH) (formula: C₆H₆O).



Mol	Chain	Residues	Atoms			ZeroOcc	AltConf
3	B	1	Total	C	O	0	0
			7	6	1		
3	D	1	Total	C	O	0	0
			7	6	1		
3	F	1	Total	C	O	0	0
			7	6	1		
3	H	1	Total	C	O	0	0
			7	6	1		

- Molecule 4 is ZINC ION (CCD ID: ZN) (formula: Zn).

Mol	Chain	Residues	Atoms		ZeroOcc	AltConf
4	B	1	Total	Zn	0	0
			1	1		
4	D	1	Total	Zn	0	0
			1	1		
4	F	1	Total	Zn	0	0
			1	1		
4	H	1	Total	Zn	0	0
			1	1		

- Molecule 5 is CHLORIDE ION (CCD ID: CL) (formula: Cl).

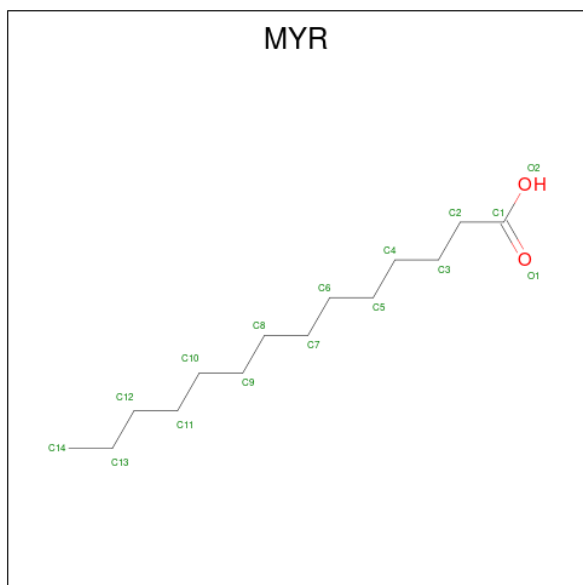
Mol	Chain	Residues	Atoms		ZeroOcc	AltConf
5	B	1	Total	Cl	0	0
			1	1		

Continued on next page...

Continued from previous page...

Mol	Chain	Residues	Atoms	ZeroOcc	AltConf
5	D	1	Total Cl 1 1	0	0
5	F	1	Total Cl 1 1	0	0
5	H	1	Total Cl 1 1	0	0

- Molecule 6 is MYRISTIC ACID (CCD ID: MYR) (formula: $C_{14}H_{28}O_2$).



Mol	Chain	Residues	Atoms	ZeroOcc	AltConf
6	B	1	Total C O 15 14 1	0	0
6	D	1	Total C O 15 14 1	0	0
6	F	1	Total C O 15 14 1	0	0
6	H	1	Total C O 15 14 1	0	0

- Molecule 7 is water.

Mol	Chain	Residues	Atoms	ZeroOcc	AltConf
7	A	3	Total O 3 3	0	0
7	B	12	Total O 12 12	0	0

Continued on next page...


Continued from previous page...

Mol	Chain	Residues	Atoms		ZeroOcc	AltConf
7	C	3	Total 3	O 3	0	0
7	D	12	Total 12	O 12	0	0
7	E	1	Total 1	O 1	0	0
7	F	8	Total 8	O 8	0	0
7	G	12	Total 12	O 12	0	0
7	H	5	Total 5	O 5	0	0

3 Residue-property plots

These plots are drawn for all protein, RNA, DNA and oligosaccharide chains in the entry. The first graphic for a chain summarises the proportions of the various outlier classes displayed in the second graphic. The second graphic shows the sequence view annotated by issues in geometry and electron density. Residues are color-coded according to the number of geometric quality criteria for which they contain at least one outlier: green = 0, yellow = 1, orange = 2 and red = 3 or more. A red dot above a residue indicates a poor fit to the electron density ($RSRZ > 2$). Stretches of 2 or more consecutive residues without any outlier are shown as a green connector. Residues present in the sample, but not in the model, are shown in grey.

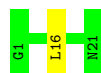
- Molecule 1: Insulin A chain

Chain A:  81% 19%



- Molecule 1: Insulin A chain

Chain C:  95% 5%




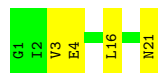
- Molecule 1: Insulin A chain

Chain E:  86% 14%




- Molecule 1: Insulin A chain

Chain G:  81% 19%




- Molecule 2: Insulin B chain

Chain B:  76% 24%

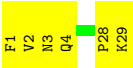
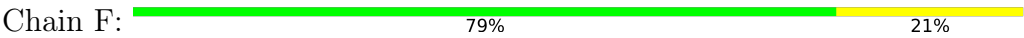


- Molecule 2: Insulin B chain

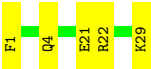
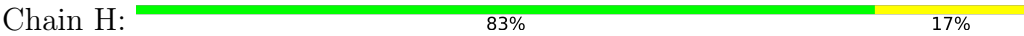
Chain D:  79% 10% 10%



● Molecule 2: Insulin B chain



● Molecule 2: Insulin B chain



4 Data and refinement statistics

Property	Value	Source
Space group	H 3	Depositor
Cell constants a, b, c, α , β , γ	81.58Å 81.58Å 81.33Å 90.00° 90.00° 120.00°	Depositor
Resolution (Å)	19.54 – 2.85 19.54 – 2.85	Depositor EDS
% Data completeness (in resolution range)	99.9 (19.54-2.85) 99.9 (19.54-2.85)	Depositor EDS
R_{merge}	(Not available)	Depositor
R_{sym}	(Not available)	Depositor
$\langle I/\sigma(I) \rangle$ ¹	0.98 (at 1.38Å)	Xtriage
Refinement program	PHENIX (1.20.1_4487: ???)	Depositor
R, R_{free}	0.252 , 0.285 0.216 , 0.253	Depositor DCC
R_{free} test set	1866 reflections (5.90%)	wwPDB-VP
Wilson B-factor (Å ²)	21.9	Xtriage
Anisotropy	0.018	Xtriage
Bulk solvent k_{sol} (e/Å ³), B_{sol} (Å ²)	0.32 , 120.2	EDS
L-test for twinning ²	$\langle L \rangle = 0.36$, $\langle L^2 \rangle = 0.20$	Xtriage
Estimated twinning fraction	0.319 for h,-h-k,-l	Xtriage
F_o, F_c correlation	0.86	EDS
Total number of atoms	1762	wwPDB-VP
Average B, all atoms (Å ²)	21.0	wwPDB-VP

Xtriage's analysis on translational NCS is as follows: *The analyses of the Patterson function reveals a significant off-origin peak that is 49.39 % of the origin peak, indicating pseudo-translational symmetry. The chance of finding a peak of this or larger height randomly in a structure without pseudo-translational symmetry is equal to 7.5161e-05.*

¹Intensities estimated from amplitudes.

²Theoretical values of $\langle |L| \rangle$, $\langle L^2 \rangle$ for acentric reflections are 0.5, 0.333 respectively for untwinned datasets, and 0.375, 0.2 for perfectly twinned datasets.

5 Model quality

5.1 Standard geometry

Bond lengths and bond angles in the following residue types are not validated in this section: IPH, ZN, MYR, CL

The Z score for a bond length (or angle) is the number of standard deviations the observed value is removed from the expected value. A bond length (or angle) with $|Z| > 5$ is considered an outlier worth inspection. RMSZ is the root-mean-square of all Z scores of the bond lengths (or angles).

Mol	Chain	Bond lengths		Bond angles	
		RMSZ	# Z >5	RMSZ	# Z >5
1	A	0.15	0/164	0.36	0/220
1	C	0.10	0/164	0.30	0/220
1	E	0.20	0/164	0.43	0/220
1	G	0.11	0/172	0.29	0/231
2	B	0.21	0/260	0.44	0/349
2	D	0.26	0/250	0.57	0/336
2	F	0.18	0/250	0.35	0/336
2	H	0.19	0/249	0.49	0/335
All	All	0.19	0/1673	0.43	0/2247

Chiral center outliers are detected by calculating the chiral volume of a chiral center and verifying if the center is modelled as a planar moiety or with the opposite hand. A planarity outlier is detected by checking planarity of atoms in a peptide group, atoms in a mainchain group or atoms of a sidechain that are expected to be planar.

Mol	Chain	#Chirality outliers	#Planarity outliers
2	D	0	1

There are no bond length outliers.

There are no bond angle outliers.

There are no chirality outliers.

All (1) planarity outliers are listed below:

Mol	Chain	Res	Type	Group
2	D	28	PRO	Peptide

5.2 Too-close contacts ⓘ

In the following table, the Non-H and H(model) columns list the number of non-hydrogen atoms and hydrogen atoms in the chain respectively. The H(added) column lists the number of hydrogen atoms added and optimized by MolProbity. The Clashes column lists the number of clashes within the asymmetric unit, whereas Symm-Clashes lists symmetry-related clashes.

Mol	Chain	Non-H	H(model)	H(added)	Clashes	Symm-Clashes
1	A	163	0	150	3	0
1	C	163	0	149	0	0
1	E	163	0	149	2	0
1	G	166	0	156	4	0
2	B	242	0	235	5	0
2	D	238	0	229	3	0
2	F	238	0	230	3	0
2	H	237	0	229	5	0
3	B	7	0	6	0	0
3	D	7	0	6	0	0
3	F	7	0	6	0	0
3	H	7	0	6	0	0
4	B	1	0	0	0	0
4	D	1	0	0	0	0
4	F	1	0	0	0	0
4	H	1	0	0	0	0
5	B	1	0	0	0	0
5	D	1	0	0	0	0
5	F	1	0	0	0	0
5	H	1	0	0	0	0
6	B	15	0	27	4	0
6	D	15	0	27	4	0
6	F	15	0	26	4	0
6	H	15	0	27	4	0
7	A	3	0	0	0	0
7	B	12	0	0	0	0
7	C	3	0	0	0	0
7	D	12	0	0	0	0
7	E	1	0	0	0	0
7	F	8	0	0	0	0
7	G	12	0	0	1	0
7	H	5	0	0	1	0
All	All	1762	0	1658	26	0

The all-atom clashscore is defined as the number of clashes found per 1000 atoms (including hydrogen atoms). The all-atom clashscore for this structure is 8.

The worst 5 of 26 close contacts within the same asymmetric unit are listed below, sorted by their

clash magnitude.

Atom-1	Atom-2	Interatomic distance (Å)	Clash overlap (Å)
2:F:1:PHE:HB3	2:F:4:GLN:HG2	1.76	0.67
6:D:104:MYR:H52	6:F:104:MYR:H31	1.85	0.58
2:H:21:GLU:OE2	2:H:21:GLU:N	2.26	0.57
2:D:4:GLN:HG3	6:F:104:MYR:H82	1.86	0.57
2:H:4:GLN:HG3	6:H:104:MYR:H81	1.86	0.56

There are no symmetry-related clashes.

5.3 Torsion angles [i](#)

5.3.1 Protein backbone [i](#)

In the following table, the Percentiles column shows the percent Ramachandran outliers of the chain as a percentile score with respect to all X-ray entries followed by that with respect to entries of similar resolution.

The Analysed column shows the number of residues for which the backbone conformation was analysed, and the total number of residues.

Mol	Chain	Analysed	Favoured	Allowed	Outliers	Percentiles	
1	A	19/21 (90%)	19 (100%)	0	0	100	100
1	C	19/21 (90%)	19 (100%)	0	0	100	100
1	E	19/21 (90%)	19 (100%)	0	0	100	100
1	G	20/21 (95%)	20 (100%)	0	0	100	100
2	B	29/29 (100%)	28 (97%)	0	1 (3%)	3	6
2	D	28/29 (97%)	27 (96%)	1 (4%)	0	100	100
2	F	28/29 (97%)	28 (100%)	0	0	100	100
2	H	28/29 (97%)	28 (100%)	0	0	100	100
All	All	190/200 (95%)	188 (99%)	1 (0%)	1 (0%)	24	42

All (1) Ramachandran outliers are listed below:

Mol	Chain	Res	Type
2	B	28	PRO

5.3.2 Protein sidechains ⓘ

In the following table, the Percentiles column shows the percent sidechain outliers of the chain as a percentile score with respect to all X-ray entries followed by that with respect to entries of similar resolution.

The Analysed column shows the number of residues for which the sidechain conformation was analysed, and the total number of residues.

Mol	Chain	Analysed	Rotameric	Outliers	Percentiles	
1	A	20/20 (100%)	19 (95%)	1 (5%)	22	44
1	C	20/20 (100%)	19 (95%)	1 (5%)	22	44
1	E	20/20 (100%)	19 (95%)	1 (5%)	22	44
1	G	21/20 (105%)	20 (95%)	1 (5%)	23	46
2	B	27/25 (108%)	27 (100%)	0	100	100
2	D	26/25 (104%)	23 (88%)	3 (12%)	5	10
2	F	26/25 (104%)	24 (92%)	2 (8%)	12	25
2	H	26/25 (104%)	25 (96%)	1 (4%)	29	54
All	All	186/180 (103%)	176 (95%)	10 (5%)	19	42

5 of 10 residues with a non-rotameric sidechain are listed below:

Mol	Chain	Res	Type
2	F	3	ASN
1	G	16	LEU
2	H	29	LYS
2	D	25	PHE
2	D	29	LYS

Sometimes sidechains can be flipped to improve hydrogen bonding and reduce clashes. All (3) such sidechains are listed below:

Mol	Chain	Res	Type
1	A	5	GLN
2	B	3	ASN
1	C	5	GLN

5.3.3 RNA ⓘ

There are no RNA molecules in this entry.

5.4 Non-standard residues in protein, DNA, RNA chains [i](#)

There are no non-standard protein/DNA/RNA residues in this entry.

5.5 Carbohydrates [i](#)

There are no oligosaccharides in this entry.

5.6 Ligand geometry [i](#)

Of 16 ligands modelled in this entry, 8 are monoatomic - leaving 8 for Mogul analysis.

In the following table, the Counts columns list the number of bonds (or angles) for which Mogul statistics could be retrieved, the number of bonds (or angles) that are observed in the model and the number of bonds (or angles) that are defined in the Chemical Component Dictionary. The Link column lists molecule types, if any, to which the group is linked. The Z score for a bond length (or angle) is the number of standard deviations the observed value is removed from the expected value. A bond length (or angle) with $|Z| > 2$ is considered an outlier worth inspection. RMSZ is the root-mean-square of all Z scores of the bond lengths (or angles).

Mol	Type	Chain	Res	Link	Bond lengths			Bond angles		
					Counts	RMSZ	$\# Z > 2$	Counts	RMSZ	$\# Z > 2$
6	MYR	D	104	2	13,14,15	0.41	0	12,13,15	0.65	0
6	MYR	H	104	2	13,14,15	0.38	0	12,13,15	0.55	0
3	IPH	H	101	-	7,7,7	0.35	0	8,8,8	0.29	0
3	IPH	D	101	-	7,7,7	0.36	0	8,8,8	0.31	0
3	IPH	F	101	-	7,7,7	0.35	0	8,8,8	0.29	0
6	MYR	B	104	-	13,14,15	0.34	0	12,13,15	0.72	0
6	MYR	F	104	2	13,14,15	0.34	0	12,13,15	0.62	0
3	IPH	B	101	-	7,7,7	0.36	0	8,8,8	0.27	0

In the following table, the Chirals column lists the number of chiral outliers, the number of chiral centers analysed, the number of these observed in the model and the number defined in the Chemical Component Dictionary. Similar counts are reported in the Torsion and Rings columns. '-' means no outliers of that kind were identified.

Mol	Type	Chain	Res	Link	Chirals	Torsions	Rings
6	MYR	H	104	2	-	6/12/12/13	-
6	MYR	D	104	2	-	4/12/12/13	-
3	IPH	H	101	-	-	-	0/1/1/1
3	IPH	D	101	-	-	-	0/1/1/1
3	IPH	F	101	-	-	-	0/1/1/1
6	MYR	B	104	-	-	4/12/12/13	-

Continued on next page...

Continued from previous page...

Mol	Type	Chain	Res	Link	Chirals	Torsions	Rings
6	MYR	F	104	2	-	5/12/12/13	-
3	IPH	B	101	-	-	-	0/1/1/1

There are no bond length outliers.

There are no bond angle outliers.

There are no chirality outliers.

5 of 19 torsion outliers are listed below:

Mol	Chain	Res	Type	Atoms
6	H	104	MYR	C10-C11-C12-C13
6	D	104	MYR	C2-C3-C4-C5
6	D	104	MYR	C3-C4-C5-C6
6	F	104	MYR	C6-C7-C8-C9
6	H	104	MYR	C3-C4-C5-C6

There are no ring outliers.

4 monomers are involved in 13 short contacts:

Mol	Chain	Res	Type	Clashes	Symm-Clashes
6	D	104	MYR	4	0
6	H	104	MYR	4	0
6	B	104	MYR	4	0
6	F	104	MYR	4	0

5.7 Other polymers [i](#)

There are no such residues in this entry.

5.8 Polymer linkage issues [i](#)

There are no chain breaks in this entry.

6 Fit of model and data [i](#)

6.1 Protein, DNA and RNA chains [i](#)

In the following table, the column labelled ‘#RSRZ> 2’ contains the number (and percentage) of RSRZ outliers, followed by percent RSRZ outliers for the chain as percentile scores relative to all X-ray entries and entries of similar resolution. The OWAB column contains the minimum, median, 95th percentile and maximum values of the occupancy-weighted average B-factor per residue. The column labelled ‘Q< 0.9’ lists the number of (and percentage) of residues with an average occupancy less than 0.9.

Mol	Chain	Analysed	<RSRZ>	#RSRZ>2	OWAB(Å ²)	Q<0.9
1	A	21/21 (100%)	-2.00	0 100 100	18, 24, 29, 31	2 (9%)
1	C	21/21 (100%)	-2.01	0 100 100	17, 21, 23, 24	1 (4%)
1	E	21/21 (100%)	-1.98	0 100 100	14, 23, 25, 28	2 (9%)
1	G	21/21 (100%)	-2.02	0 100 100	16, 22, 25, 27	2 (9%)
2	B	29/29 (100%)	-1.95	0 100 100	13, 18, 23, 25	5 (17%)
2	D	29/29 (100%)	-2.00	0 100 100	14, 19, 27, 31	5 (17%)
2	F	29/29 (100%)	-1.92	0 100 100	13, 19, 23, 25	5 (17%)
2	H	29/29 (100%)	-1.97	0 100 100	14, 19, 36, 38	4 (13%)
All	All	200/200 (100%)	-1.98	0 100 100	13, 21, 28, 38	26 (13%)

There are no RSRZ outliers to report.

6.2 Non-standard residues in protein, DNA, RNA chains [i](#)

There are no non-standard protein/DNA/RNA residues in this entry.

6.3 Carbohydrates [i](#)

There are no oligosaccharides in this entry.

6.4 Ligands [i](#)

In the following table, the Atoms column lists the number of modelled atoms in the group and the number defined in the chemical component dictionary. The B-factors column lists the minimum, median, 95th percentile and maximum values of B factors of atoms in the group. The column labelled ‘Q< 0.9’ lists the number of atoms with occupancy less than 0.9.

Mol	Type	Chain	Res	Atoms	RSCC	RSR	B-factors(\AA^2)	Q<0.9
6	MYR	D	104	15/16	0.99	0.03	19,21,24,26	0
6	MYR	F	104	15/16	0.99	0.03	16,19,21,21	13
6	MYR	H	104	15/16	0.99	0.02	16,20,27,28	0
3	IPH	H	101	7/7	1.00	0.03	19,20,21,23	0
4	ZN	B	102	1/1	1.00	0.01	12,12,12,12	1
4	ZN	D	102	1/1	1.00	0.03	15,15,15,15	1
4	ZN	F	102	1/1	1.00	0.06	12,12,12,12	1
4	ZN	H	102	1/1	1.00	0.03	17,17,17,17	1
5	CL	B	103	1/1	1.00	0.01	12,12,12,12	1
5	CL	D	103	1/1	1.00	0.04	16,16,16,16	1
5	CL	F	103	1/1	1.00	0.00	10,10,10,10	1
5	CL	H	103	1/1	1.00	0.01	13,13,13,13	1
6	MYR	B	104	15/16	1.00	0.02	18,20,21,22	6
3	IPH	B	101	7/7	1.00	0.02	16,17,19,20	0
3	IPH	D	101	7/7	1.00	0.01	15,18,19,21	0
3	IPH	F	101	7/7	1.00	0.02	18,19,22,22	0

6.5 Other polymers [i](#)

There are no such residues in this entry.