



Full wwPDB X-ray Structure Validation Report ⓘ

Apr 9, 2026 – 10:13 PM UTC

PDB ID : 21OK / pdb_000021ok
Title : Crystal structure of the indoleamine 2,3-dioxygenase 2 (IDO2) H143Y mutant complexed with 5-methoxy-L-Trp
Authors : Takahashi, A.; Inoue, T.; Fukuda, Y.; Adachi, N.
Deposited on : 2025-12-22
Resolution : 2.60 Å(reported)

This is a Full wwPDB X-ray Structure Validation Report for a publicly released PDB entry.

We welcome your comments at validation@mail.wwpdb.org

A user guide is available at

<https://www.wwpdb.org/validation/2017/XrayValidationReportHelp>

with specific help available everywhere you see the ⓘ symbol.

The types of validation reports are described at

<http://www.wwpdb.org/validation/2017/FAQs#types>.

The following versions of software and data (see [references ⓘ](#)) were used in the production of this report:

MolProbity	:	4-5-2 with Phenix2.0
Mogul	:	2022.3.0, CSD as543be (2022)
Xtriage (Phenix)	:	2.0
EDS	:	3.0
Buster-report	:	wwPDB partial adaption of 1.1.7 (2018)
Percentile statistics	:	20250101.v01 (using entries in the PDB archive January 1st 2025)
CCP4	:	9.0.010 (Gargrove)
Density-Fitness	:	1.0.12
Ideal geometry (proteins)	:	Engh & Huber (2001)
Ideal geometry (DNA, RNA)	:	Parkinson et al. (1996)
Validation Pipeline (wwPDB-VP)	:	2.49

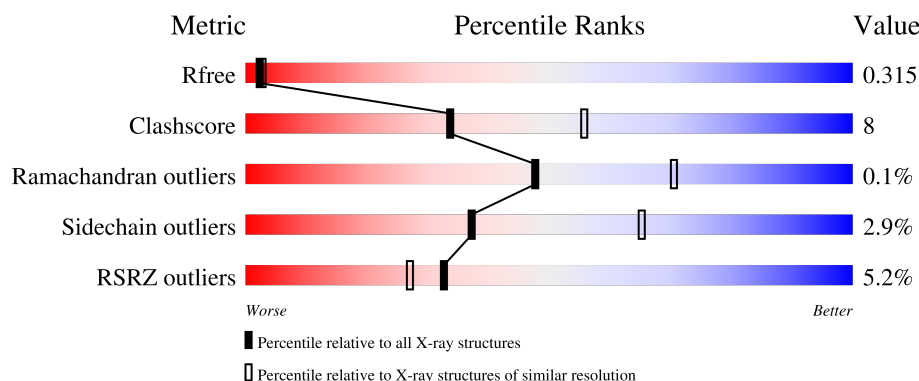
1 Overall quality at a glance

The following experimental techniques were used to determine the structure:

X-RAY DIFFRACTION

The reported resolution of this entry is 2.60 Å.

Percentile scores (ranging between 0-100) for global validation metrics of the entry are shown in the following graphic. The table shows the number of entries on which the scores are based.



Metric	Whole archive (#Entries)	Similar resolution (#Entries, resolution range(Å))
R_{free}	180053	4008 (2.60-2.60)
Clashscore	190562	4347 (2.60-2.60)
Ramachandran outliers	187476	4277 (2.60-2.60)
Sidechain outliers	187428	4277 (2.60-2.60)
RSRZ outliers	180081	4008 (2.60-2.60)

The table below summarises the geometric issues observed across the polymeric chains and their fit to the electron density. The red, orange, yellow and green segments of the lower bar indicate the fraction of residues that contain outliers for ≥ 3 , 2, 1 and 0 types of geometric quality criteria respectively. A grey segment represents the fraction of residues that are not modelled. The numeric value for each fraction is indicated below the corresponding segment, with a dot representing fractions $\leq 5\%$. The upper red bar (where present) indicates the fraction of residues that have poor fit to the electron density. The numeric value is given above the bar.

Mol	Chain	Length	Quality of chain
1	A	782	<div> <div>5%</div> <div> <div></div> <div>76%</div> <div>20%</div> <div>..</div> </div> </div>
2	B	2	<div> <div>100%</div> </div>

2 Entry composition

There are 8 unique types of molecules in this entry. The entry contains 6063 atoms, of which 0 are hydrogens and 0 are deuteriums.

In the tables below, the ZeroOcc column contains the number of atoms modelled with zero occupancy, the AltConf column contains the number of residues with at least one atom in alternate conformation and the Trace column contains the number of residues modelled with at most 2 atoms.

- Molecule 1 is a protein called DNA polymerase I, Indoleamine 2,3-dioxygenase 2.

Mol	Chain	Residues	Atoms					ZeroOcc	AltConf	Trace
1	A	749	Total	C	N	O	S	0	1	0
			5874	3780	974	1101	19			

There are 19 discrepancies between the modelled and reference sequences:

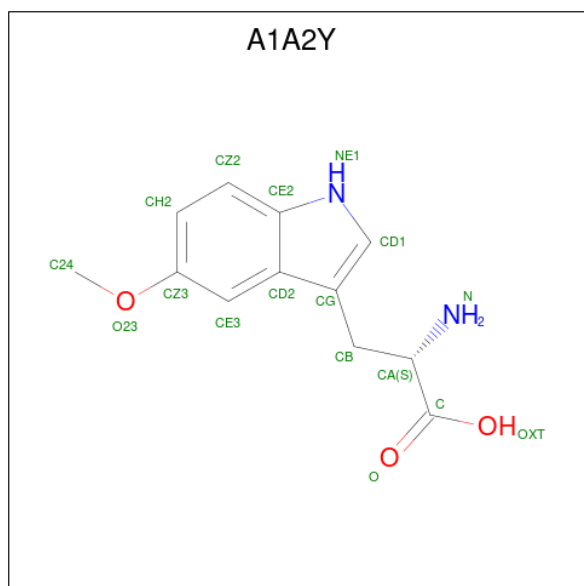
Chain	Residue	Modelled	Actual	Comment	Reference
A	-17	MET	-	initiating methionine	UNP A0ABU7R6J9
A	-16	GLY	-	expression tag	UNP A0ABU7R6J9
A	-15	SER	-	expression tag	UNP A0ABU7R6J9
A	-14	SER	-	expression tag	UNP A0ABU7R6J9
A	-13	HIS	-	expression tag	UNP A0ABU7R6J9
A	-12	HIS	-	expression tag	UNP A0ABU7R6J9
A	-11	HIS	-	expression tag	UNP A0ABU7R6J9
A	-10	HIS	-	expression tag	UNP A0ABU7R6J9
A	-9	HIS	-	expression tag	UNP A0ABU7R6J9
A	-8	HIS	-	expression tag	UNP A0ABU7R6J9
A	-7	GLU	-	expression tag	UNP A0ABU7R6J9
A	-6	ASN	-	expression tag	UNP A0ABU7R6J9
A	-5	LEU	-	expression tag	UNP A0ABU7R6J9
A	-4	TYR	-	expression tag	UNP A0ABU7R6J9
A	-3	PHE	-	expression tag	UNP A0ABU7R6J9
A	-2	GLN	-	expression tag	UNP A0ABU7R6J9
A	-1	GLY	-	expression tag	UNP A0ABU7R6J9
A	312	VAL	ALA	conflict	UNP A0ABU7R6J9
A	487	TYR	HIS	engineered mutation	UNP Q6ZQW0

- Molecule 2 is an oligosaccharide called alpha-D-glucopyranose-(1-4)-alpha-D-glucopyranose.



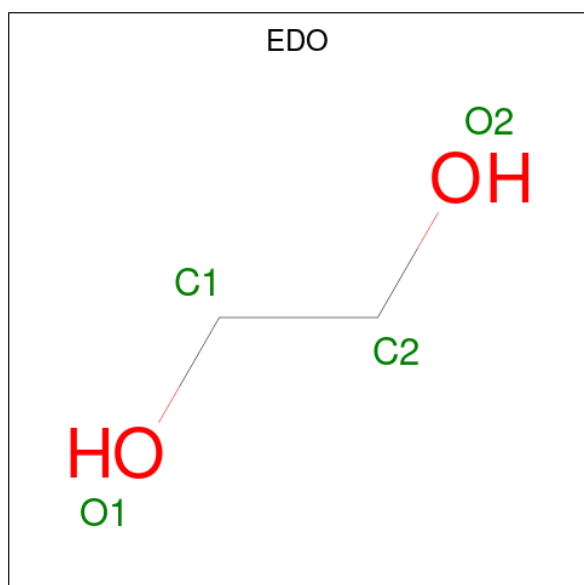
Mol	Chain	Residues	Atoms			ZeroOcc	AltConf	Trace
2	B	2	Total	C	O	0	0	0
			23	12	11			

- Molecule 3 is 5-methoxy-L-tryptophan (CCD ID: A1A2Y) (formula: $C_{12}H_{14}N_2O_3$) (labeled as "Ligand of Interest" by depositor).



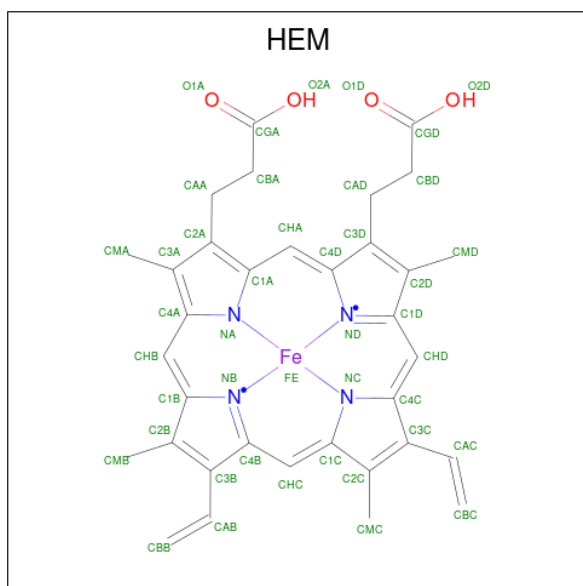
Mol	Chain	Residues	Atoms				ZeroOcc	AltConf
3	A	1	Total	C	N	O	0	0
			17	12	2	3		

- Molecule 4 is 1,2-ETHANEDIOL (CCD ID: EDO) (formula: $C_2H_6O_2$).



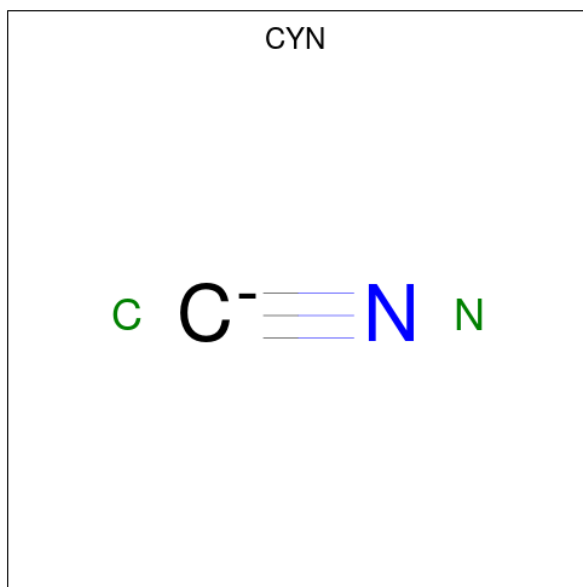
[illegible]

- Molecule 5 is PROTOPORPHYRIN IX CONTAINING FE (CCD ID: HEM) (formula: $C_{34}H_{32}FeN_4O_4$) (labeled as "Ligand of Interest" by depositor).



Mol	Chain	Residues	Atoms					ZeroOcc	AltConf
5	A	1	Total 43	C 34	Fe 1	N 4	O 4	0	0

- Molecule 6 is CYANIDE ION (CCD ID: CYN) (formula: CN).



Mol	Chain	Residues	Atoms			ZeroOcc	AltConf
6	A	1	Total	C	N	0	0
			2	1	1		

- Molecule 7 is SODIUM ION (CCD ID: NA) (formula: Na).

Mol	Chain	Residues	Atoms		ZeroOcc	AltConf
7	A	1	Total	Na	0	0
			1	1		

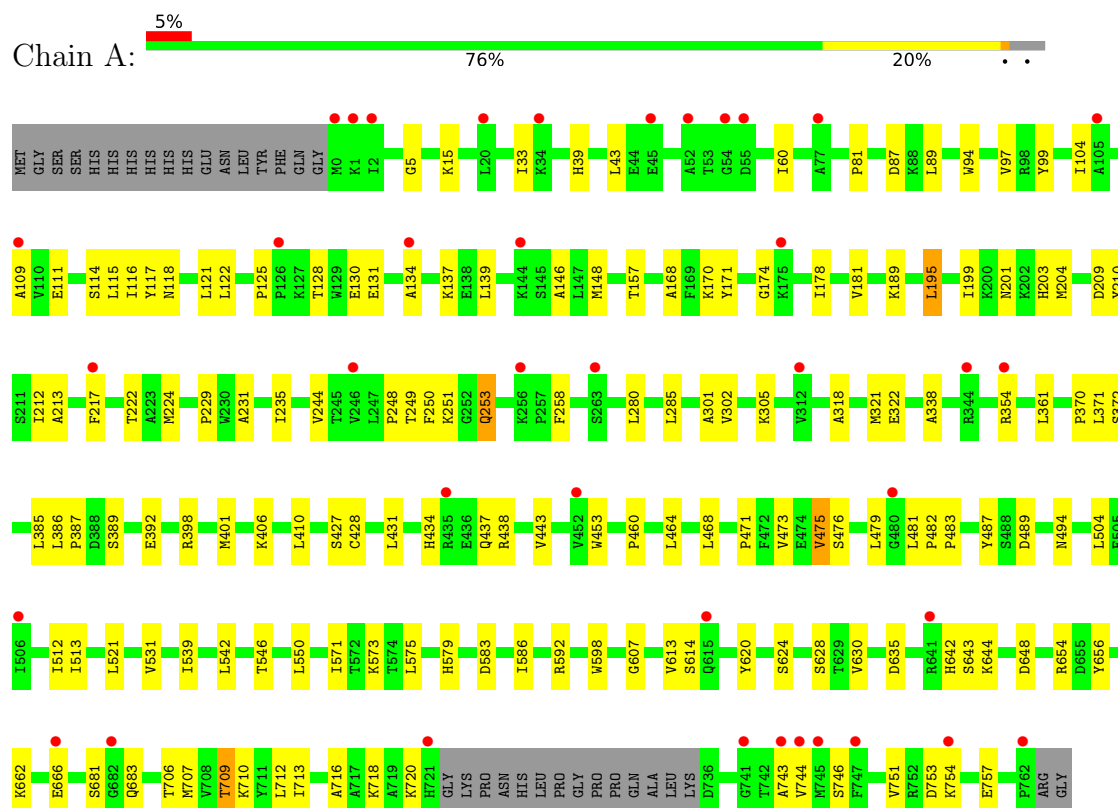
- Molecule 8 is water.

Mol	Chain	Residues	Atoms		ZeroOcc	AltConf
8	A	75	Total	O	0	0
			75	75		

3 Residue-property plots [i](#)

These plots are drawn for all protein, RNA, DNA and oligosaccharide chains in the entry. The first graphic for a chain summarises the proportions of the various outlier classes displayed in the second graphic. The second graphic shows the sequence view annotated by issues in geometry and electron density. Residues are color-coded according to the number of geometric quality criteria for which they contain at least one outlier: green = 0, yellow = 1, orange = 2 and red = 3 or more. A red dot above a residue indicates a poor fit to the electron density ($RSRZ > 2$). Stretches of 2 or more consecutive residues without any outlier are shown as a green connector. Residues present in the sample, but not in the model, are shown in grey.

- Molecule 1: DNA polymerase I, Indoleamine 2,3-dioxygenase 2



- Molecule 2: alpha-D-glucopyranose-(1-4)-alpha-D-glucopyranose



4 Data and refinement statistics

Property	Value	Source
Space group	P 31 2 1	Depositor
Cell constants a, b, c, α , β , γ	198.83Å 198.83Å 94.27Å 90.00° 90.00° 120.00°	Depositor
Resolution (Å)	49.02 – 2.60 49.02 – 2.60	Depositor EDS
% Data completeness (in resolution range)	99.8 (49.02-2.60) 99.8 (49.02-2.60)	Depositor EDS
R_{merge}	(Not available)	Depositor
R_{sym}	(Not available)	Depositor
$\langle I/\sigma(I) \rangle$ ¹	1.41 (at 2.61Å)	Xtriage
Refinement program	PHENIX ("2.0_5885": ???)	Depositor
R, R_{free}	0.276 , 0.315 0.277 , 0.315	Depositor DCC
R_{free} test set	3442 reflections (5.22%)	wwPDB-VP
Wilson B-factor (Å ²)	76.0	Xtriage
Anisotropy	0.037	Xtriage
Bulk solvent k_{sol} (e/Å ³), B_{sol} (Å ²)	0.30 , 39.8	EDS
L-test for twinning ²	$\langle L \rangle = 0.50$, $\langle L^2 \rangle = 0.33$	Xtriage
Estimated twinning fraction	0.019 for -h,-k,l	Xtriage
F_o, F_c correlation	0.91	EDS
Total number of atoms	6063	wwPDB-VP
Average B, all atoms (Å ²)	80.0	wwPDB-VP

Xtriage's analysis on translational NCS is as follows: *The largest off-origin peak in the Patterson function is 2.87% of the height of the origin peak. No significant pseudotranslation is detected.*

¹Intensities estimated from amplitudes.

²Theoretical values of $\langle |L| \rangle$, $\langle L^2 \rangle$ for acentric reflections are 0.5, 0.333 respectively for untwinned datasets, and 0.375, 0.2 for perfectly twinned datasets.

5 Model quality [i](#)

5.1 Standard geometry [i](#)

Bond lengths and bond angles in the following residue types are not validated in this section: GLC, HEM, NA, A1A2Y, EDO, CYN

The Z score for a bond length (or angle) is the number of standard deviations the observed value is removed from the expected value. A bond length (or angle) with $|Z| > 5$ is considered an outlier worth inspection. RMSZ is the root-mean-square of all Z scores of the bond lengths (or angles).

Mol	Chain	Bond lengths		Bond angles	
		RMSZ	$\# Z > 5$	RMSZ	$\# Z > 5$
1	A	0.41	0/6019	0.59	0/8174

There are no bond length outliers.

There are no bond angle outliers.

There are no chirality outliers.

There are no planarity outliers.

5.2 Too-close contacts [i](#)

In the following table, the Non-H and H(model) columns list the number of non-hydrogen atoms and hydrogen atoms in the chain respectively. The H(added) column lists the number of hydrogen atoms added and optimized by MolProbity. The Clashes column lists the number of clashes within the asymmetric unit, whereas Symm-Clashes lists symmetry-related clashes.

Mol	Chain	Non-H	H(model)	H(added)	Clashes	Symm-Clashes
1	A	5874	0	5846	89	0
2	B	23	0	21	0	0
3	A	17	0	0	0	0
4	A	28	0	42	2	0
5	A	43	0	30	3	0
6	A	2	0	0	0	0
7	A	1	0	0	0	0
8	A	75	0	0	2	0
All	All	6063	0	5939	92	0

The all-atom clashscore is defined as the number of clashes found per 1000 atoms (including hydrogen atoms). The all-atom clashscore for this structure is 8.

All (92) close contacts within the same asymmetric unit are listed below, sorted by their clash

magnitude.

Atom-1	Atom-2	Interatomic distance (Å)	Clash overlap (Å)
1:A:178:ILE:HD12	1:A:370:PRO:HG3	1.70	0.73
5:A:808:HEM:HHD	5:A:808:HEM:HBC2	1.72	0.72
1:A:386:LEU:HD13	1:A:438:ARG:HE	1.55	0.70
1:A:122:LEU:HD11	1:A:125:PRO:HA	1.73	0.69
1:A:201:ASN:HB2	1:A:203:HIS:CD2	2.32	0.64
1:A:453:TRP:CZ3	1:A:460:PRO:HB3	2.33	0.64
1:A:109:ALA:HA	1:A:302:VAL:HA	1.79	0.64
1:A:354:ARG:O	1:A:354:ARG:HD3	1.99	0.62
1:A:43:LEU:HD11	1:A:60:ILE:HD11	1.82	0.62
1:A:471:PRO:O	1:A:475:VAL:HG22	2.00	0.62
1:A:654:ARG:HB3	1:A:662:LYS:HG3	1.82	0.61
1:A:575:LEU:HB3	1:A:707:MET:HE1	1.84	0.60
1:A:579[B]:HIS:ND1	1:A:710:LYS:HE3	2.18	0.58
1:A:195:LEU:O	1:A:199:ILE:HG13	2.04	0.57
1:A:116:ILE:HG12	1:A:244:VAL:HG12	1.88	0.56
1:A:209:ASP:OD1	1:A:212:ILE:HD12	2.06	0.56
1:A:483:PRO:HD2	1:A:620:TYR:CZ	2.42	0.55
1:A:15:LYS:HE3	1:A:111:GLU:OE2	2.07	0.54
1:A:89:LEU:HD12	1:A:94:TRP:CZ2	2.42	0.54
1:A:99:TYR:HB3	1:A:104:ILE:HD13	1.91	0.53
1:A:139:LEU:HD22	1:A:146:ALA:HA	1.90	0.52
5:A:808:HEM:HMB1	5:A:808:HEM:HBB2	1.92	0.52
1:A:231:ALA:O	1:A:235:ILE:HG13	2.10	0.52
1:A:473:VAL:HG21	1:A:613:VAL:HG11	1.91	0.52
1:A:115:LEU:HD11	1:A:224:MET:HB3	1.93	0.51
1:A:434:HIS:O	1:A:438:ARG:HG2	2.11	0.51
1:A:148:MET:HE1	1:A:212:ILE:HG22	1.92	0.51
1:A:168:ALA:O	1:A:181:VAL:HA	2.11	0.51
1:A:114:SER:HB2	8:A:932:HOH:O	2.11	0.50
1:A:250:PHE:CE2	1:A:251:LYS:HG3	2.47	0.50
1:A:5:GLY:O	1:A:33:ILE:HG23	2.12	0.49
1:A:217:PHE:HA	1:A:222:THR:HG22	1.94	0.49
1:A:592:ARG:CZ	1:A:712:LEU:HD21	2.42	0.49
1:A:592:ARG:NH1	1:A:712:LEU:HD21	2.28	0.49
1:A:427:SER:HA	4:A:803:EDO:H11	1.95	0.48
1:A:118:ASN:CG	1:A:121:LEU:HG	2.39	0.48
1:A:385:LEU:O	1:A:387:PRO:HD3	2.13	0.48
1:A:482:PRO:HG3	1:A:656:TYR:CD2	2.49	0.48
1:A:487:TYR:CZ	1:A:628:SER:HB2	2.49	0.48
1:A:716:ALA:O	1:A:720:LYS:HG2	2.14	0.47
1:A:280:LEU:O	1:A:285:LEU:HB2	2.15	0.47

Continued on next page...

Continued from previous page...

Atom-1	Atom-2	Interatomic distance (Å)	Clash overlap (Å)
1:A:128:THR:HG23	1:A:130:GLU:OE1	2.15	0.46
1:A:128:THR:HB	1:A:131:GLU:OE1	2.16	0.46
1:A:531:VAL:HG13	1:A:571:ILE:HG23	1.98	0.46
1:A:87:ASP:O	1:A:305:LYS:HE3	2.15	0.46
1:A:386:LEU:HD23	1:A:389:SER:OG	2.15	0.46
1:A:428:CYS:SG	1:A:475:VAL:HG13	2.56	0.46
1:A:401:MET:SD	1:A:443:VAL:HG21	2.56	0.46
1:A:635:ASP:OD2	1:A:642:HIS:HE1	1.98	0.46
1:A:428:CYS:HB3	1:A:431:LEU:HD12	1.97	0.45
1:A:117:TYR:CD2	1:A:125:PRO:HG3	2.51	0.45
1:A:743:ALA:HB3	1:A:746:SER:OG	2.16	0.45
1:A:583:ASP:CG	1:A:586:ILE:HD13	2.42	0.45
1:A:662:LYS:HE2	1:A:666:GLU:OE2	2.17	0.45
1:A:583:ASP:HB3	1:A:586:ILE:HB	1.99	0.44
1:A:128:THR:O	1:A:131:GLU:HG2	2.17	0.44
1:A:681:SER:C	1:A:683:GLN:H	2.25	0.44
1:A:468:LEU:O	1:A:471:PRO:HD2	2.17	0.44
1:A:148:MET:HE2	1:A:213:ALA:HA	1.99	0.44
1:A:115:LEU:HD22	1:A:248:PRO:HD3	1.99	0.43
1:A:476:SER:HB3	1:A:481:LEU:O	2.18	0.43
1:A:249:THR:HB	1:A:253:GLN:O	2.19	0.43
1:A:406:LYS:HE3	1:A:410:LEU:HD11	2.00	0.43
1:A:550:LEU:HD23	1:A:550:LEU:HA	1.83	0.42
1:A:338:ALA:CB	1:A:550:LEU:HD13	2.49	0.42
1:A:437:GLN:HB3	1:A:479:LEU:HD21	2.01	0.42
1:A:754:LYS:HA	1:A:754:LYS:HD3	1.87	0.42
1:A:189:LYS:HG2	1:A:361:LEU:HD12	2.01	0.42
1:A:398:ARG:HH11	1:A:398:ARG:HG3	1.84	0.42
1:A:371:LEU:HD12	1:A:372:SER:H	1.84	0.42
1:A:598:TRP:HB2	1:A:607:GLY:HA2	2.00	0.42
1:A:204:MET:HE2	1:A:204:MET:HB3	1.87	0.42
1:A:573:LYS:HD3	1:A:573:LYS:HA	1.77	0.42
1:A:170:LYS:HD3	1:A:170:LYS:HA	1.79	0.42
1:A:489:ASP:O	1:A:494:ASN:HB2	2.19	0.42
1:A:512:ILE:HG22	1:A:513:ILE:HG12	2.02	0.42
1:A:354:ARG:HD3	1:A:354:ARG:C	2.45	0.41
1:A:301:ALA:HB3	1:A:321:MET:HE3	2.01	0.41
1:A:464:LEU:HA	1:A:464:LEU:HD12	1.81	0.41
1:A:81:PRO:HA	8:A:922:HOH:O	2.20	0.41
1:A:318:ALA:O	1:A:322:GLU:HG2	2.20	0.41
1:A:97:VAL:O	1:A:104:ILE:HG12	2.20	0.41

Continued on next page...

Continued from previous page...

Atom-1	Atom-2	Interatomic distance (Å)	Clash overlap (Å)
1:A:709:THR:O	1:A:713:ILE:HG12	2.21	0.41
1:A:753:ASP:O	1:A:757:GLU:HG3	2.20	0.41
1:A:134:ALA:O	1:A:137:LYS:HB2	2.21	0.41
1:A:539:ILE:HD11	1:A:630:VAL:HG22	2.01	0.41
1:A:644:LYS:HE3	1:A:648:ASP:OD2	2.21	0.41
1:A:707:MET:HE3	1:A:707:MET:HB2	1.83	0.41
1:A:171:TYR:HE1	1:A:174:GLY:C	2.28	0.41
1:A:642:HIS:NE2	1:A:751:VAL:HG13	2.36	0.40
1:A:210:TYR:CD1	4:A:806:EDO:H21	2.56	0.40
5:A:808:HEM:HBB2	5:A:808:HEM:CMB	2.52	0.40

There are no symmetry-related clashes.

5.3 Torsion angles [i](#)

5.3.1 Protein backbone [i](#)

In the following table, the Percentiles column shows the percent Ramachandran outliers of the chain as a percentile score with respect to all X-ray entries followed by that with respect to entries of similar resolution.

The Analysed column shows the number of residues for which the backbone conformation was analysed, and the total number of residues.

Mol	Chain	Analysed	Favoured	Allowed	Outliers	Percentiles
1	A	746/782 (95%)	719 (96%)	26 (4%)	1 (0%)	48 70

All (1) Ramachandran outliers are listed below:

Mol	Chain	Res	Type
1	A	744	VAL

5.3.2 Protein sidechains [i](#)

In the following table, the Percentiles column shows the percent sidechain outliers of the chain as a percentile score with respect to all X-ray entries followed by that with respect to entries of similar resolution.

The Analysed column shows the number of residues for which the sidechain conformation was analysed, and the total number of residues.

Mol	Chain	Analysed	Rotameric	Outliers	Percentiles
1	A	623/649 (96%)	605 (97%)	18 (3%)	37 65

All (18) residues with a non-rotameric sidechain are listed below:

Mol	Chain	Res	Type
1	A	39	HIS
1	A	157	THR
1	A	195	LEU
1	A	229	PRO
1	A	253	GLN
1	A	258	PHE
1	A	392	GLU
1	A	475	VAL
1	A	504	LEU
1	A	521	LEU
1	A	542	LEU
1	A	546	THR
1	A	614	SER
1	A	624	SER
1	A	643	SER
1	A	706	THR
1	A	709	THR
1	A	718	LYS

Sometimes sidechains can be flipped to improve hydrogen bonding and reduce clashes. All (4) such sidechains are listed below:

Mol	Chain	Res	Type
1	A	18	ASN
1	A	253	GLN
1	A	642	HIS
1	A	683	GLN

5.3.3 RNA ⓘ

There are no RNA molecules in this entry.

5.4 Non-standard residues in protein, DNA, RNA chains ⓘ

There are no non-standard protein/DNA/RNA residues in this entry.

5.5 Carbohydrates

2 monosaccharides are modelled in this entry.

In the following table, the Counts columns list the number of bonds (or angles) for which Mogul statistics could be retrieved, the number of bonds (or angles) that are observed in the model and the number of bonds (or angles) that are defined in the Chemical Component Dictionary. The Link column lists molecule types, if any, to which the group is linked. The Z score for a bond length (or angle) is the number of standard deviations the observed value is removed from the expected value. A bond length (or angle) with $|Z| > 2$ is considered an outlier worth inspection. RMSZ is the root-mean-square of all Z scores of the bond lengths (or angles).

Mol	Type	Chain	Res	Link	Bond lengths			Bond angles		
					Counts	RMSZ	# $ Z > 2$	Counts	RMSZ	# $ Z > 2$
2	GLC	B	1	2	12,12,12	0.68	0	17,17,17	1.20	3 (17%)
2	GLC	B	2	2	11,11,12	0.83	0	15,15,17	1.28	2 (13%)

In the following table, the Chirals column lists the number of chiral outliers, the number of chiral centers analysed, the number of these observed in the model and the number defined in the Chemical Component Dictionary. Similar counts are reported in the Torsion and Rings columns. '-' means no outliers of that kind were identified.

Mol	Type	Chain	Res	Link	Chirals	Torsions	Rings
2	GLC	B	1	2	-	2/2/22/22	0/1/1/1
2	GLC	B	2	2	-	2/2/19/22	0/1/1/1

There are no bond length outliers.

All (5) bond angle outliers are listed below:

Mol	Chain	Res	Type	Atoms	Z	Observed(°)	Ideal(°)
2	B	1	GLC	O1-C1-C2	3.06	117.85	108.98
2	B	1	GLC	C4-C3-C2	2.42	115.07	110.83
2	B	2	GLC	O5-C1-C2	-2.17	105.61	110.79
2	B	1	GLC	C1-C2-C3	2.10	114.64	110.36
2	B	2	GLC	O3-C3-C4	2.01	115.12	110.38

There are no chirality outliers.

All (4) torsion outliers are listed below:

Mol	Chain	Res	Type	Atoms
2	B	1	GLC	C4-C5-C6-O6
2	B	1	GLC	O5-C5-C6-O6
2	B	2	GLC	C4-C5-C6-O6

Continued on next page...

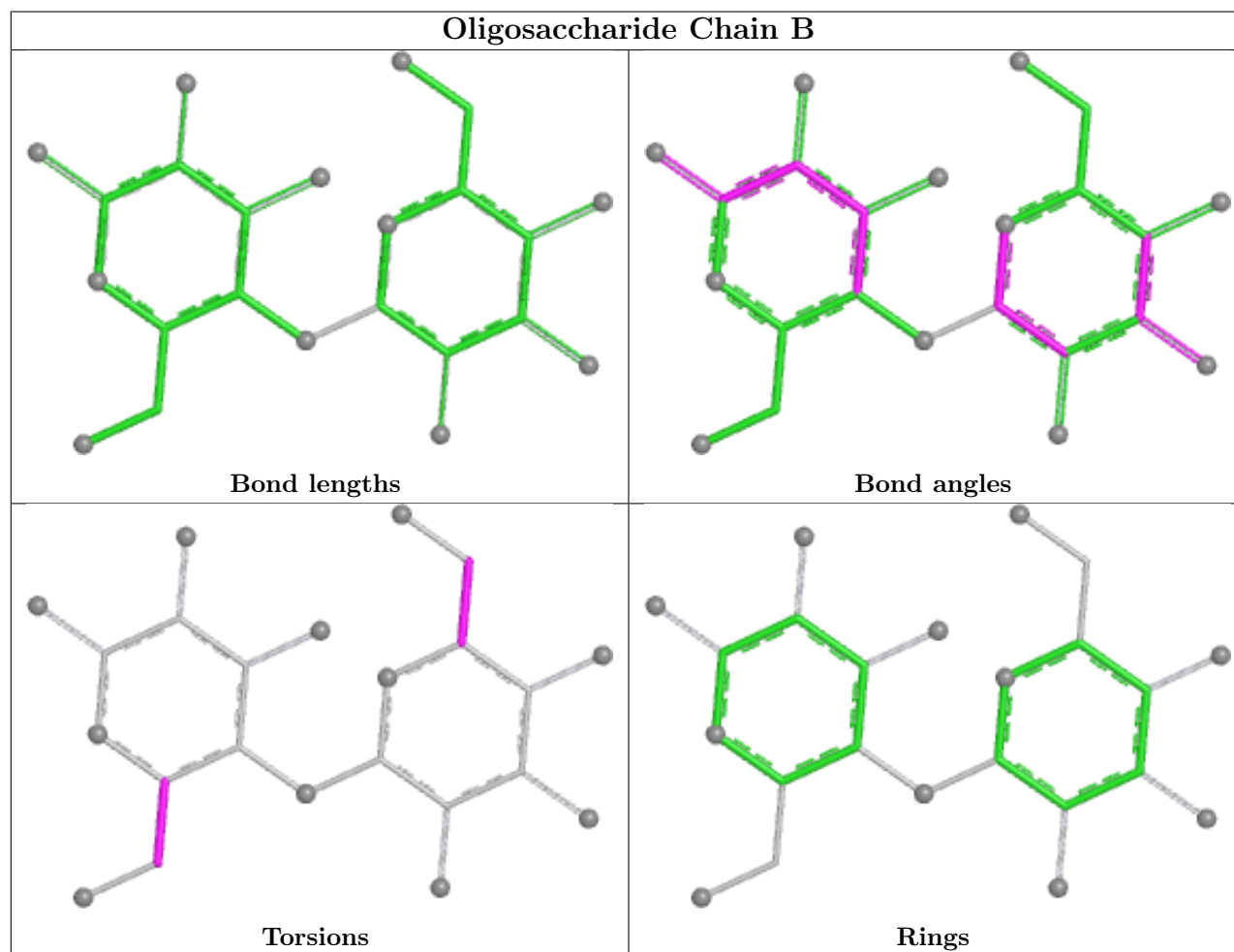
Continued from previous page...

Mol	Chain	Res	Type	Atoms
2	B	2	GLC	O5-C5-C6-O6

There are no ring outliers.

No monomer is involved in short contacts.

The following is a two-dimensional graphical depiction of Mogul quality analysis of bond lengths, bond angles, torsion angles, and ring geometry for oligosaccharide.



5.6 Ligand geometry [i](#)

Of 11 ligands modelled in this entry, 1 is monoatomic - leaving 10 for Mogul analysis.

In the following table, the Counts columns list the number of bonds (or angles) for which Mogul statistics could be retrieved, the number of bonds (or angles) that are observed in the model and the number of bonds (or angles) that are defined in the Chemical Component Dictionary. The Link column lists molecule types, if any, to which the group is linked. The Z score for a bond length (or angle) is the number of standard deviations the observed value is removed from the

expected value. A bond length (or angle) with $|Z| > 2$ is considered an outlier worth inspection. RMSZ is the root-mean-square of all Z scores of the bond lengths (or angles).

Mol	Type	Chain	Res	Link	Bond lengths			Bond angles		
					Counts	RMSZ	$\# Z > 2$	Counts	RMSZ	$\# Z > 2$
5	HEM	A	808	1	50,50,50	1.64	6 (12%)	67,82,82	1.38	6 (8%)
4	EDO	A	807	-	3,3,3	0.28	0	2,2,2	0.19	0
4	EDO	A	804	-	3,3,3	0.23	0	2,2,2	0.27	0
4	EDO	A	805	-	3,3,3	0.30	0	2,2,2	0.18	0
4	EDO	A	810	-	3,3,3	0.27	0	2,2,2	0.29	0
3	A1A2Y	A	801	-	17,18,18	1.51	3 (17%)	21,25,25	1.14	3 (14%)
4	EDO	A	803	-	3,3,3	0.40	0	2,2,2	0.02	0
4	EDO	A	806	-	3,3,3	0.31	0	2,2,2	0.27	0
6	CYN	A	809	-	1,1,1	0.20	0	-	-	-
4	EDO	A	802	-	3,3,3	0.32	0	2,2,2	0.13	0

In the following table, the Chirals column lists the number of chiral outliers, the number of chiral centers analysed, the number of these observed in the model and the number defined in the Chemical Component Dictionary. Similar counts are reported in the Torsion and Rings columns. '-' means no outliers of that kind were identified.

Mol	Type	Chain	Res	Link	Chirals	Torsions	Rings
5	HEM	A	808	1	-	4/14/54/54	-
4	EDO	A	807	-	-	0/1/1/1	-
4	EDO	A	804	-	-	0/1/1/1	-
4	EDO	A	805	-	-	1/1/1/1	-
4	EDO	A	810	-	-	1/1/1/1	-
3	A1A2Y	A	801	-	-	2/10/10/10	0/2/2/2
4	EDO	A	803	-	-	1/1/1/1	-
4	EDO	A	806	-	-	1/1/1/1	-
4	EDO	A	802	-	-	0/1/1/1	-

All (9) bond length outliers are listed below:

Mol	Chain	Res	Type	Atoms	Z	Observed(Å)	Ideal(Å)
5	A	808	HEM	FE-NA	8.39	2.22	1.95
5	A	808	HEM	CAC-C3C	3.16	1.55	1.47
5	A	808	HEM	CAB-C3B	2.80	1.54	1.47
5	A	808	HEM	CMA-C3A	2.68	1.56	1.50
3	A	801	A1A2Y	CD1-NE1	-2.63	1.32	1.37
3	A	801	A1A2Y	CD1-CG	2.17	1.40	1.36
5	A	808	HEM	CMB-C2B	2.11	1.55	1.50
3	A	801	A1A2Y	CD2-CE2	-2.01	1.38	1.41
5	A	808	HEM	FE-ND	2.01	2.01	1.94

All (9) bond angle outliers are listed below:

Mol	Chain	Res	Type	Atoms	Z	Observed(°)	Ideal(°)
5	A	808	HEM	CHD-C1D-ND	3.72	128.42	124.42
5	A	808	HEM	CHC-C4B-NB	3.06	127.71	124.42
5	A	808	HEM	CBA-CAA-C2A	-2.70	105.08	112.53
3	A	801	A1A2Y	CE2-NE1-CD1	2.66	111.44	109.08
5	A	808	HEM	CHD-C4C-C3C	2.52	129.45	125.21
5	A	808	HEM	CHB-C1B-NB	2.47	127.43	124.37
5	A	808	HEM	CHA-C4D-ND	2.41	127.35	124.37
3	A	801	A1A2Y	CZ2-CE2-CD2	-2.36	119.90	122.19
3	A	801	A1A2Y	CG-CD1-NE1	-2.31	107.77	110.31

There are no chirality outliers.

All (10) torsion outliers are listed below:

Mol	Chain	Res	Type	Atoms
4	A	805	EDO	O1-C1-C2-O2
4	A	810	EDO	O1-C1-C2-O2
5	A	808	HEM	C4C-C3C-CAC-CBC
4	A	803	EDO	O1-C1-C2-O2
3	A	801	A1A2Y	CA-CB-CG-CD2
3	A	801	A1A2Y	CA-CB-CG-CD1
5	A	808	HEM	CAA-CBA-CGA-O2A
4	A	806	EDO	O1-C1-C2-O2
5	A	808	HEM	CAA-CBA-CGA-O1A
5	A	808	HEM	C2A-CAA-CBA-CGA

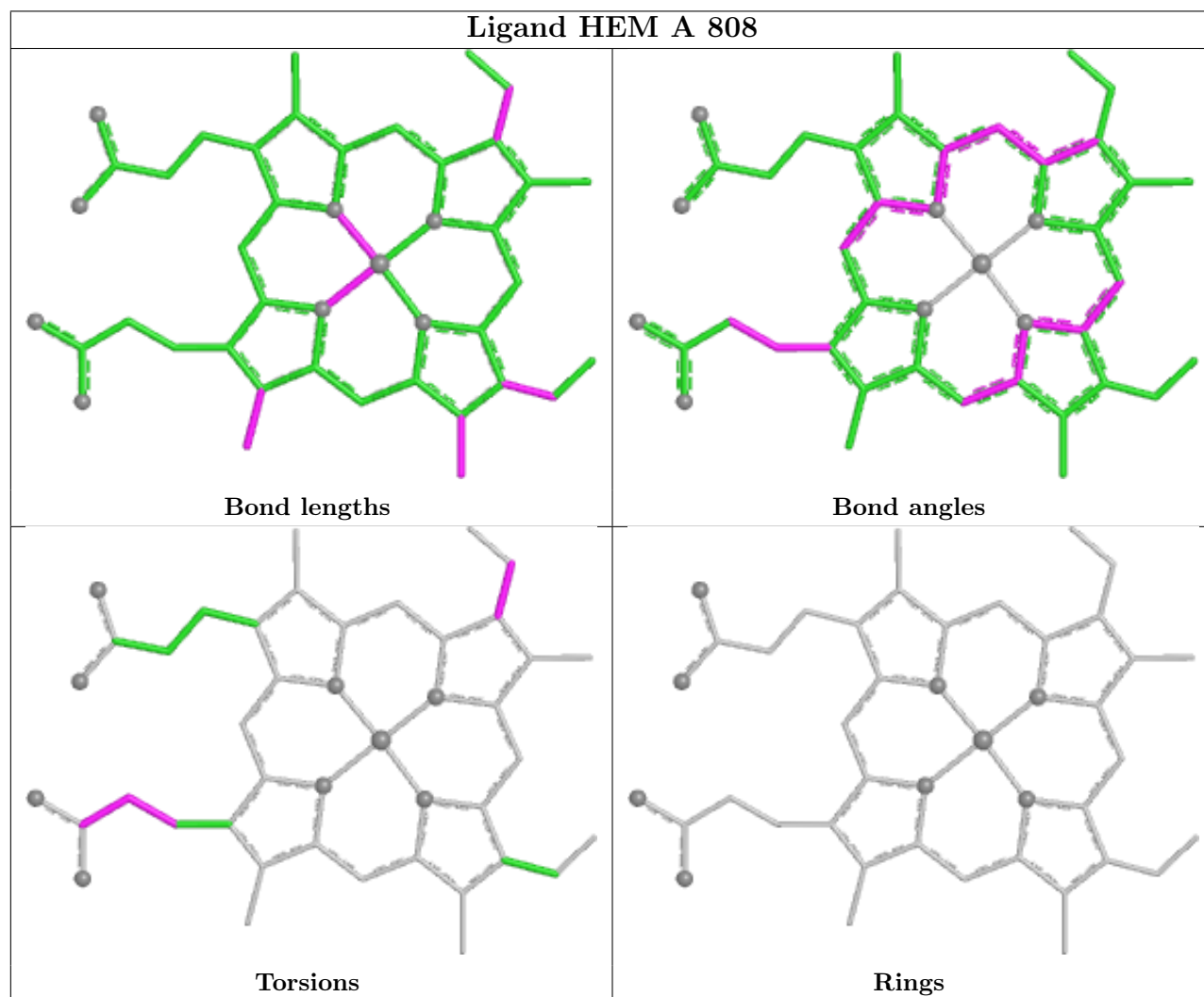
There are no ring outliers.

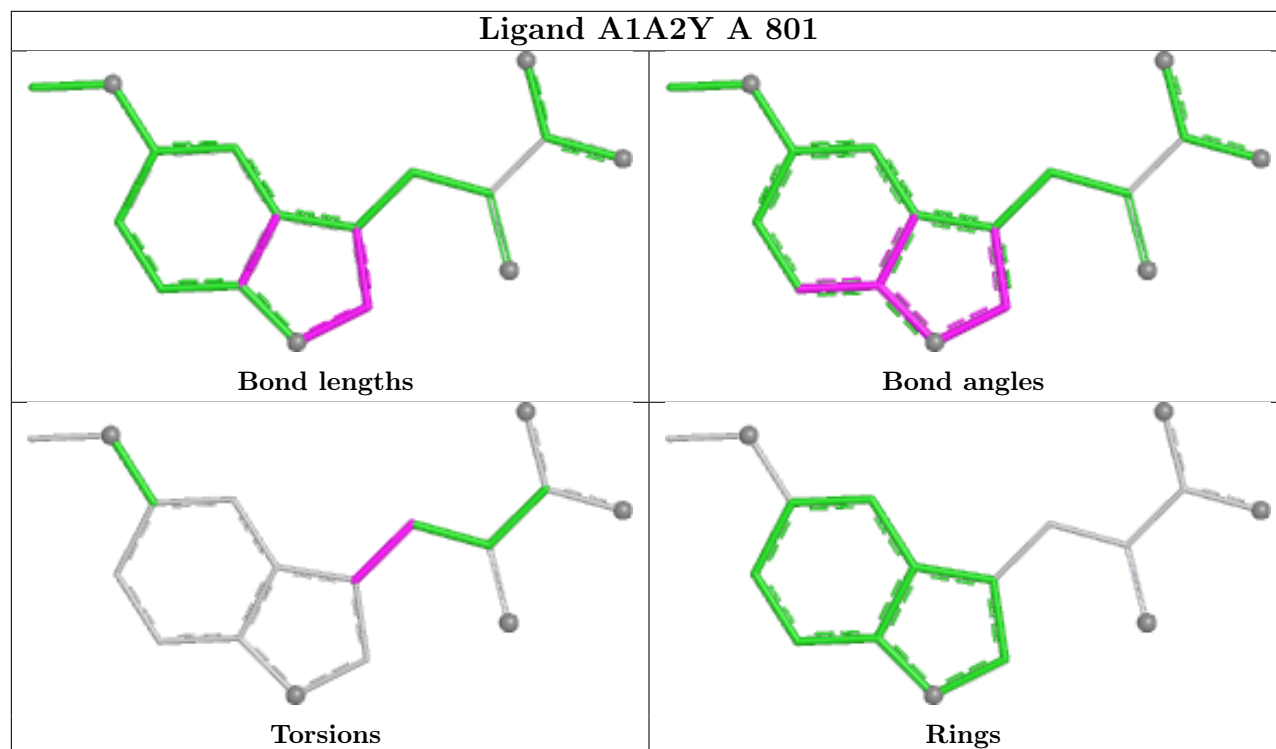
3 monomers are involved in 5 short contacts:

Mol	Chain	Res	Type	Clashes	Symm-Clashes
5	A	808	HEM	3	0
4	A	803	EDO	1	0
4	A	806	EDO	1	0

The following is a two-dimensional graphical depiction of Mogul quality analysis of bond lengths, bond angles, torsion angles, and ring geometry for all instances of the Ligand of Interest. In addition, ligands with molecular weight > 250 and outliers as shown on the validation Tables will also be included. For torsion angles, if less than 5% of the Mogul distribution of torsion angles is within 10 degrees of the torsion angle in question, then that torsion angle is considered an outlier. Any bond that is central to one or more torsion angles identified as an outlier by Mogul will be highlighted in the graph. For rings, the root-mean-square deviation (RMSD) between the ring in question and similar rings identified by Mogul is calculated over all ring torsion angles. If the

average RMSD is greater than 60 degrees and the minimal RMSD between the ring in question and any Mogul-identified rings is also greater than 60 degrees, then that ring is considered an outlier. The outliers are highlighted in purple. The color gray indicates Mogul did not find sufficient equivalents in the CSD to analyse the geometry.





5.7 Other polymers [i](#)

There are no such residues in this entry.

5.8 Polymer linkage issues [i](#)

There are no chain breaks in this entry.

6 Fit of model and data ⓘ

6.1 Protein, DNA and RNA chains ⓘ

In the following table, the column labelled ‘#RSRZ> 2’ contains the number (and percentage) of RSRZ outliers, followed by percent RSRZ outliers for the chain as percentile scores relative to all X-ray entries and entries of similar resolution. The OWAB column contains the minimum, median, 95th percentile and maximum values of the occupancy-weighted average B-factor per residue. The column labelled ‘Q< 0.9’ lists the number of (and percentage) of residues with an average occupancy less than 0.9.

Mol	Chain	Analysed	<RSRZ>	#RSRZ>2	OWAB(Å ²)	Q<0.9
1	A	749/782 (95%)	0.42	39 (5%) 33 27	40, 78, 104, 135	1 (0%)

All (39) RSRZ outliers are listed below:

Mol	Chain	Res	Type	RSRZ
1	A	762	PRO	4.5
1	A	1	LYS	3.9
1	A	741	GLY	3.7
1	A	246	VAL	3.5
1	A	480	GLY	3.4
1	A	745	MET	3.1
1	A	354	ARG	3.0
1	A	54	GLY	3.0
1	A	34	LYS	2.8
1	A	55	ASP	2.8
1	A	126	PRO	2.7
1	A	263	SER	2.7
1	A	2	ILE	2.7
1	A	109	ALA	2.6
1	A	175	LYS	2.6
1	A	744	VAL	2.6
1	A	452	VAL	2.5
1	A	506	ILE	2.5
1	A	743	ALA	2.5
1	A	641	ARG	2.4
1	A	0	MET	2.4
1	A	134	ALA	2.4
1	A	344	ARG	2.4
1	A	312	VAL	2.3
1	A	52	ALA	2.3
1	A	144	LYS	2.3
1	A	20	LEU	2.3

Continued on next page...

Continued from previous page...

Mol	Chain	Res	Type	RSRZ
1	A	682	GLY	2.3
1	A	747	PHE	2.2
1	A	77	ALA	2.2
1	A	105	ALA	2.2
1	A	217	PHE	2.2
1	A	256	LYS	2.1
1	A	721	HIS	2.1
1	A	45	GLU	2.1
1	A	666	GLU	2.1
1	A	754	LYS	2.1
1	A	615	GLN	2.0
1	A	435	ARG	2.0

6.2 Non-standard residues in protein, DNA, RNA chains [i](#)

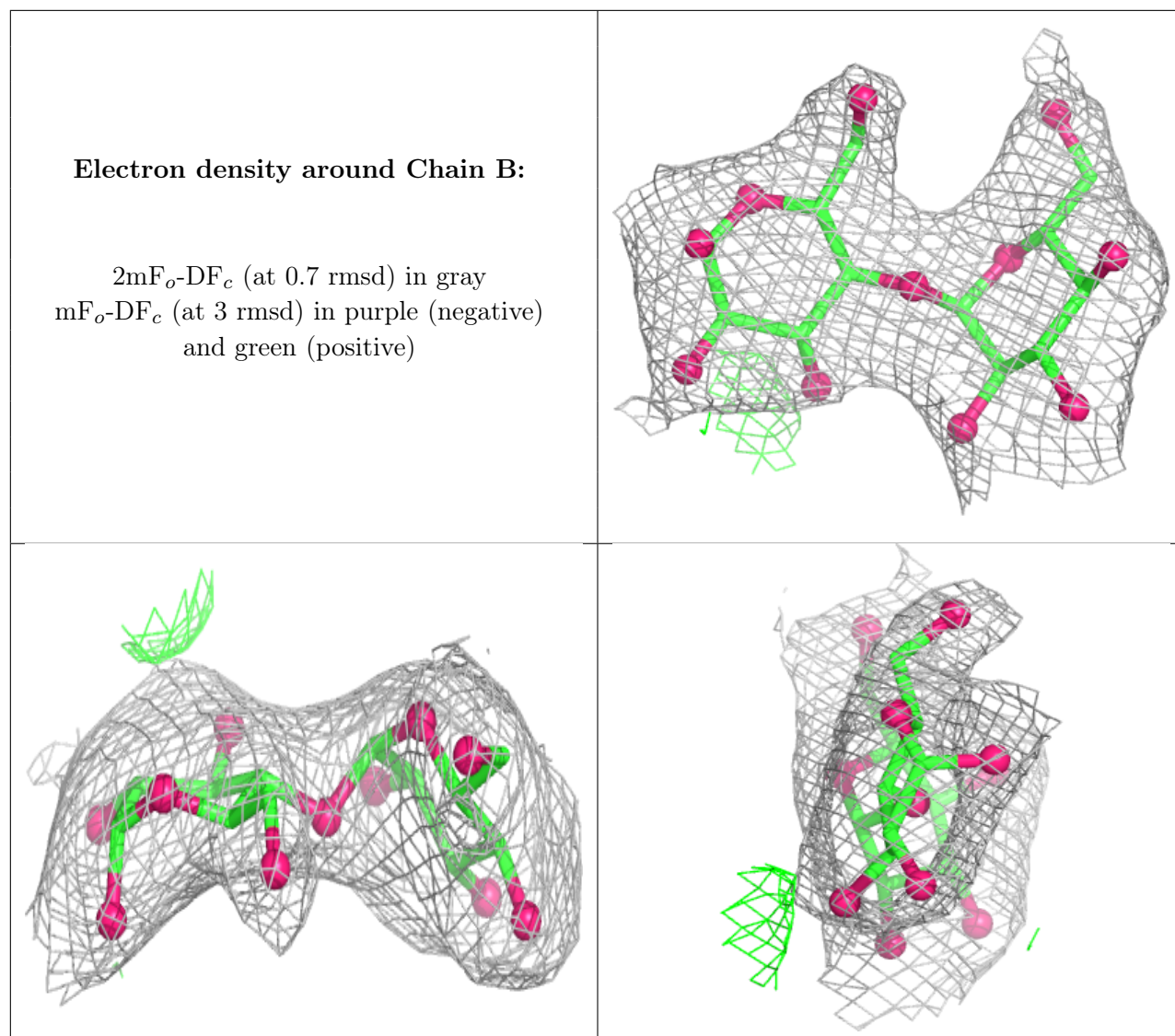
There are no non-standard protein/DNA/RNA residues in this entry.

6.3 Carbohydrates [i](#)

In the following table, the Atoms column lists the number of modelled atoms in the group and the number defined in the chemical component dictionary. The B-factors column lists the minimum, median, 95th percentile and maximum values of B factors of atoms in the group. The column labelled 'Q< 0.9' lists the number of atoms with occupancy less than 0.9.

Mol	Type	Chain	Res	Atoms	RSCC	RSR	B-factors(\AA^2)	Q<0.9
2	GLC	B	1	12/12	0.90	0.14	73,80,82,82	0
2	GLC	B	2	11/12	0.95	0.08	71,76,82,82	0

The following is a graphical depiction of the model fit to experimental electron density for oligosaccharide. Each fit is shown from different orientation to approximate a three-dimensional view.



6.4 Ligands [i](#)

In the following table, the Atoms column lists the number of modelled atoms in the group and the number defined in the chemical component dictionary. The B-factors column lists the minimum, median, 95th percentile and maximum values of B factors of atoms in the group. The column labelled 'Q< 0.9' lists the number of atoms with occupancy less than 0.9.

Mol	Type	Chain	Res	Atoms	RSCC	RSR	B-factors(Å ²)	Q<0.9
4	EDO	A	802	4/4	0.47	0.38	85,93,100,103	0
4	EDO	A	807	4/4	0.69	0.24	97,101,108,113	0
4	EDO	A	803	4/4	0.79	0.25	82,88,88,96	0
7	NA	A	811	1/1	0.83	0.33	84,84,84,84	0
4	EDO	A	810	4/4	0.85	0.19	84,87,93,95	0
4	EDO	A	806	4/4	0.86	0.24	83,86,88,92	0
4	EDO	A	805	4/4	0.86	0.38	89,92,96,98	0

Continued on next page...

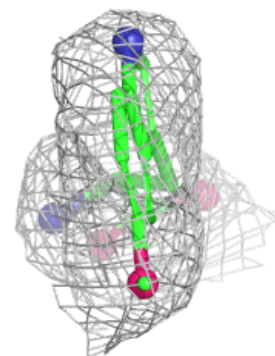
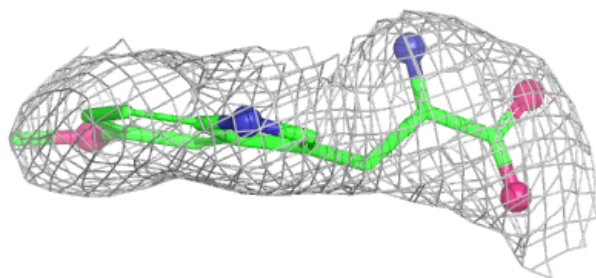
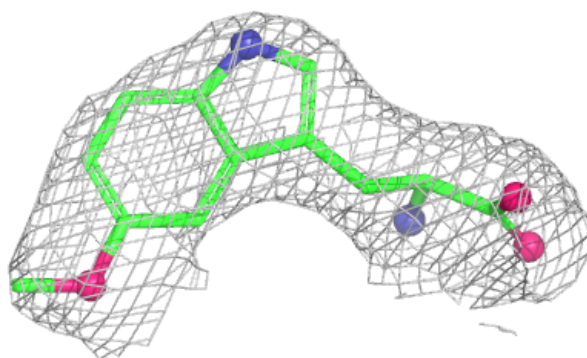
Continued from previous page...

Mol	Type	Chain	Res	Atoms	RSCC	RSR	B-factors(\AA^2)	Q<0.9
6	CYN	A	809	2/2	0.96	0.11	65,65,65,66	0
4	EDO	A	804	4/4	0.96	0.12	80,80,83,87	0
3	A1A2Y	A	801	17/17	0.97	0.09	64,68,73,74	0
5	HEM	A	808	43/43	0.98	0.08	57,65,72,79	0

The following is a graphical depiction of the model fit to experimental electron density of all instances of the Ligand of Interest. In addition, ligands with molecular weight > 250 and outliers as shown on the geometry validation Tables will also be included. Each fit is shown from different orientation to approximate a three-dimensional view.

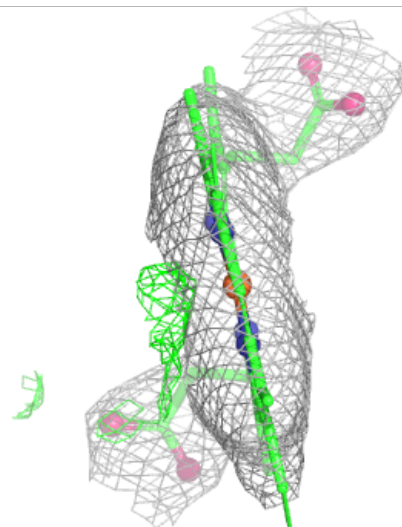
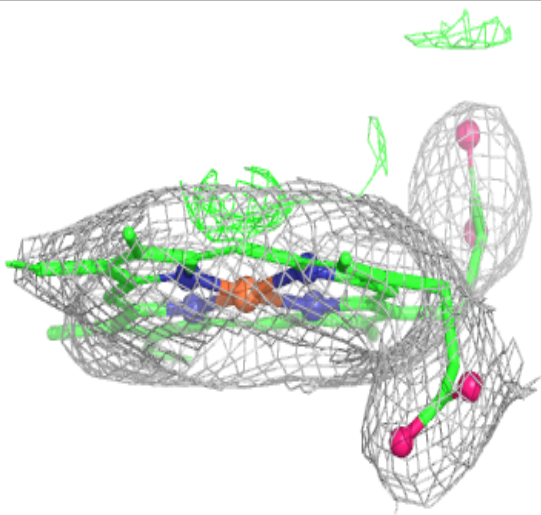
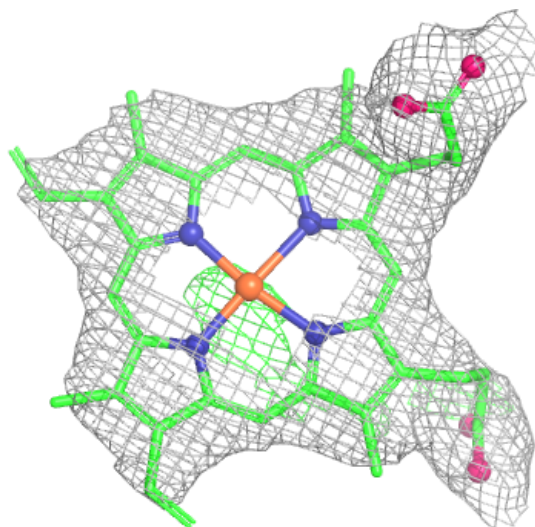
Electron density around A1A2Y A 801:

2mF_o-DF_c (at 0.7 rmsd) in gray
mF_o-DF_c (at 3 rmsd) in purple (negative)
and green (positive)



Electron density around HEM A 808:

$2mF_o-DF_c$ (at 0.7 rmsd) in gray
 mF_o-DF_c (at 3 rmsd) in purple (negative)
and green (positive)



6.5 Other polymers [i](#)

There are no such residues in this entry.